

Data Path : Z:\voasrv\HPCHEM1\MSVOA_V\Data\VW092421\
 Data File : VW022325.D
 Acq On : 24 Sep 2021 18:43
 Operator : SY/MD
 Sample : VSTDCCC005EC
 Misc : 25.0mL/MSVOA_V/WATER
 ALS Vial : 16 Sample Multiplier: 1

Instrument :
 MSVOA_V
 ClientSampled :

Quant Time: Sep 25 04:33:41 2021
 Quant Method : Z:\voasrv\HPCHEM1\MSVOA_V\Method\SFAMVTR092321WMA.M
 Quant Title : TRACE VOA SFAM1.0
 QLast Update : Sat Sep 25 04:30:06 2021
 Response via : Initial Calibration

Compound	R.T.	QIon	Response	Conc	Units	Dev(Min)
Internal Standards						
1) 1,4-Difluorobenzene	5.619	114	131274	5.000	ug/L	0.00
28) Chlorobenzene-d5	8.854	117	127747	5.000	ug/L	0.00
58) 1,4-Dichlorobenzene-d4	11.252	152	69995	5.000	ug/L	0.00
System Monitoring Compounds						
4) Vinyl Chloride-d3	1.301	65	25572	3.866	ug/L	0.00
Spiked Amount	5.000	Range 40 - 130	Recovery	=	77.400%	
7) Chloroethane-d5	1.565	69	32860	4.245	ug/L	0.00
Spiked Amount	5.000	Range 65 - 130	Recovery	=	84.800%	
11) 1,1-Dichloroethene-d2	2.105	63	64726	4.104	ug/L	0.00
Spiked Amount	5.000	Range 60 - 125	Recovery	=	82.000%	
20) 2-Butanone-d5	3.908	46	142567	52.742	ug/L	0.00
Spiked Amount	50.000	Range 40 - 130	Recovery	=	105.480%	
24) Chloroform-d	4.352	84	85229	4.492	ug/L	0.00
Spiked Amount	5.000	Range 70 - 125	Recovery	=	89.800%	
26) 1,2-Dichloroethane-d4	5.037	65	40050	4.418	ug/L	0.00
Spiked Amount	5.000	Range 70 - 130	Recovery	=	88.400%	
32) Benzene-d6	5.050	84	162727	4.530	ug/L	0.00
Spiked Amount	5.000	Range 70 - 125	Recovery	=	90.600%	
36) 1,2-Dichloropropane-d6	6.072	67	52270	4.660	ug/L	0.00
Spiked Amount	5.000	Range 60 - 140	Recovery	=	93.200%	
41) Toluene-d8	7.317	98	141535	4.363	ug/L	0.00
Spiked Amount	5.000	Range 70 - 130	Recovery	=	87.200%	
43) trans-1,3-Dichloroprop...	7.625	79	14999	4.378	ug/L	0.00
Spiked Amount	5.000	Range 55 - 130	Recovery	=	87.600%	
46) 2-Hexanone-d5	8.092	63	111984	52.567	ug/L	0.00
Spiked Amount	50.000	Range 45 - 130	Recovery	=	105.140%	
56) 1,1,2,2-Tetrachloroeth...	10.217	84	43970	4.656	ug/L	0.00
Spiked Amount	5.000	Range 65 - 120	Recovery	=	93.200%	
66) 1,2-Dichlorobenzene-d4	11.625	152	56520	4.302	ug/L	0.00
Spiked Amount	5.000	Range 80 - 120	Recovery	=	86.000%	
Target Compounds						
2) Dichlorodifluoromethane	1.127	85	49936	4.885	ug/L	98
3) Chloromethane	1.240	50	48917	4.789	ug/L	100
5) Vinyl chloride	1.307	62	48466	4.933	ug/L	97
6) Bromomethane	1.519	94	31701	5.033	ug/L	100
8) Chloroethane	1.581	64	30615	4.948	ug/L	93
9) Trichlorofluoromethane	1.748	101	67903	4.997	ug/L	99
10) 1,1,2-Trichloro-1,2,2-...	2.111	101	40801	5.038	ug/L	99
12) 1,1-Dichloroethene	2.114	96	36459	4.942	ug/L	85
13) Acetone	2.198	43	73907	48.223	ug/L	98
14) Carbon disulfide	2.288	76	120308	4.796	ug/L	100
15) Methyl Acetate	2.445	43	17497	5.145	ug/L	92
16) Methylene chloride	2.503	84	48050	3.743	ug/L	99
17) Methyl tert-butyl Ether	2.770	73	98058	4.998	ug/L	100
18) trans-1,2-Dichloroethene	2.757	96	43829	4.973	ug/L	97
19) 1,1-Dichloroethane	3.188	63	77775	5.002	ug/L	98
21) 2-Butanone	3.992	43	119800	51.671	ug/L	100
22) cis-1,2-Dichloroethene	3.915	96	45633	5.210	ug/L	99
23) Bromochloromethane	4.253	128	20770	5.023	ug/L	97
25) Chloroform	4.378	83	81128	5.106	ug/L	96

Data Path : Z:\voasrv\HPCHEM1\MSVOA_V\Data\VW092421\
 Data File : VW022325.D
 Acq On : 24 Sep 2021 18:43
 Operator : SY/MD
 Sample : VSTDCCC005EC
 Misc : 25.0mL/MSVOA_V/WATER
 ALS Vial : 16 Sample Multiplier: 1

Instrument :
 MSVOA_V
 ClientSampleId :

Quant Time: Sep 25 04:33:41 2021
 Quant Method : Z:\voasrv\HPCHEM1\MSVOA_V\Method\SFAMVTR092321WMA.M
 Quant Title : TRACE VOA SFAM1.0
 QLast Update : Sat Sep 25 04:30:06 2021
 Response via : Initial Calibration

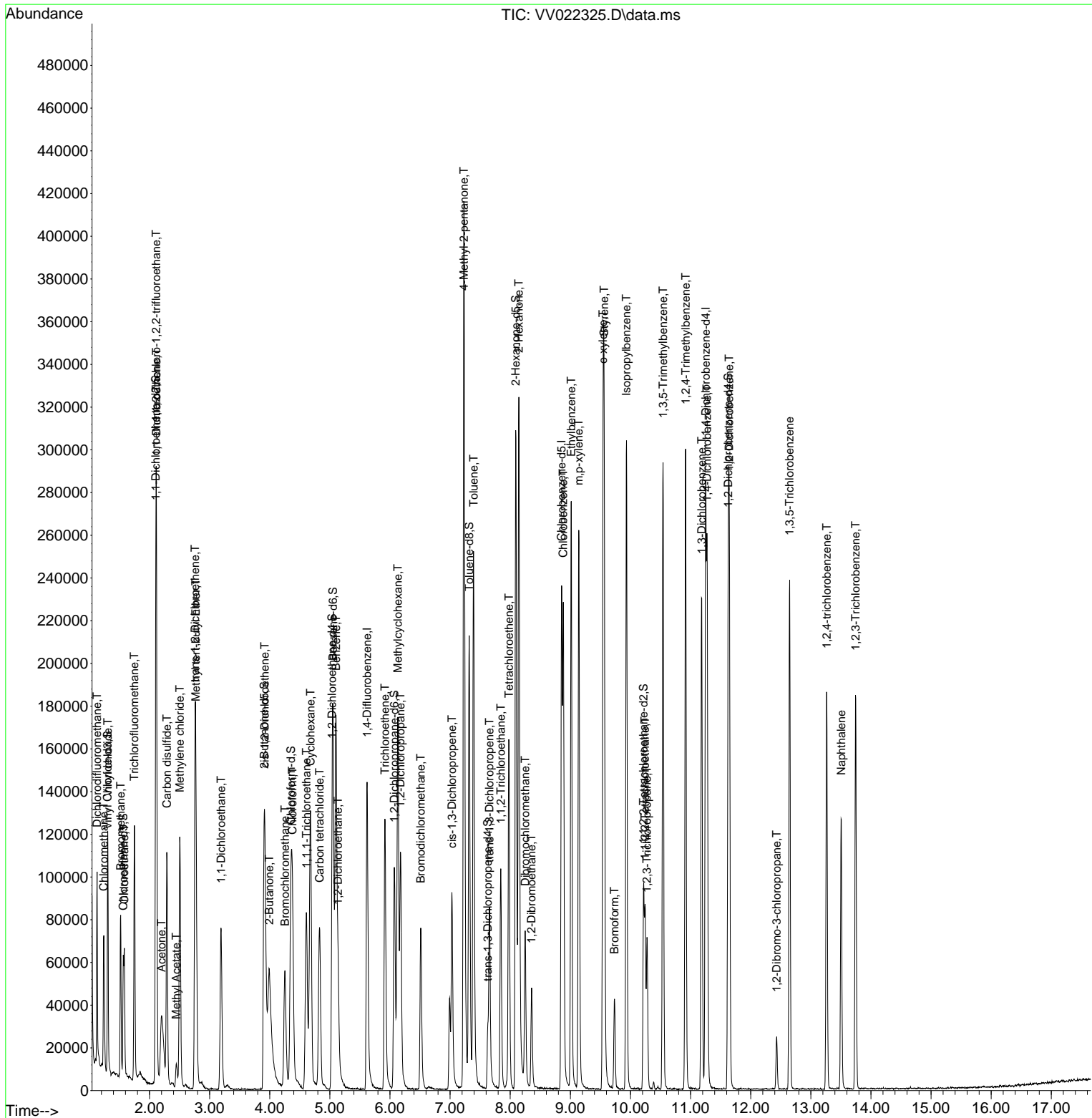
Compound	R.T.	QIon	Response	Conc	Units	Dev(Min)
27) 1,2-Dichloroethane	5.137	62	45804	4.937	ug/L	97
29) 1,1,1-Trichloroethane	4.609	97	68598	5.156	ug/L	98
30) Cyclohexane	4.677	56	67300	5.066	ug/L	97
31) Carbon tetrachloride	4.828	117	57689	5.104	ug/L	98
33) Benzene	5.101	78	175306	5.217	ug/L	100
34) Trichloroethene	5.915	95	45584	5.338	ug/L	94
35) Methylcyclohexane	6.130	83	71952	5.277	ug/L	99
37) 1,2-Dichloropropane	6.175	63	45498	5.363	ug/L	99
38) Bromodichloromethane	6.513	83	50954	4.985	ug/L	100
39) cis-1,3-Dichloropropene	7.031	75	58465	5.211	ug/L	98
40) 4-Methyl-2-pentanone	7.230	43	291182	53.259	ug/L	99
42) Toluene	7.391	91	189651	5.328	ug/L	99
44) trans-1,3-Dichloropropene	7.654	75	49835	5.197	ug/L	100
45) 1,1,2-Trichloroethane	7.844	97	33190	5.174	ug/L	96
47) Tetrachloroethene	7.979	164	38447	5.309	ug/L	99
48) 2-Hexanone	8.143	43	214468	55.826	ug/L	100
49) Dibromochloromethane	8.249	129	37506	5.437	ug/L	91
50) 1,2-Dibromoethane	8.355	107	31742	5.322	ug/L	94
51) Chlorobenzene	8.883	112	121473	5.195	ug/L	99
52) Ethylbenzene	9.014	91	192262	5.192	ug/L	97
53) m,p-xylene	9.140	106	76937	5.380	ug/L	90
54) o-xylene	9.545	106	72059	5.171	ug/L	95
55) Styrene	9.561	104	125900	5.445	ug/L	99
57) 1,1,2,2-Tetrachloroethane	10.243	83	39955	5.016	ug/L	100
59) Bromoform	9.735	173	19102	4.892	ug/L	97
60) Isopropylbenzene	9.934	105	193077	4.950	ug/L	100
61) 1,2,3-Trichloropropane	10.275	75	28486	4.692	ug/L	100
62) 1,3,5-Trimethylbenzene	10.542	105	153141	4.808	ug/L	99
63) 1,2,4-Trimethylbenzene	10.918	105	158116	4.980	ug/L	100
64) 1,3-Dichlorobenzene	11.185	146	97211	5.064	ug/L	100
65) 1,4-Dichlorobenzene	11.275	146	96611	4.966	ug/L	96
67) 1,2-Dichlorobenzene	11.644	146	91701	5.011	ug/L	97
68) 1,2-Dibromo-3-chloropr...	12.432	75	5518	4.572	ug/L	93
69) 1,3,5-Trichlorobenzene	12.648	180	72457	4.976	ug/L	98
70) 1,2,4-trichlorobenzene	13.265	180	56219	4.846	ug/L	96
71) Naphthalene	13.506	128	98392	4.667	ug/L	99
72) 1,2,3-Trichlorobenzene	13.744	180	53559	4.940	ug/L	97

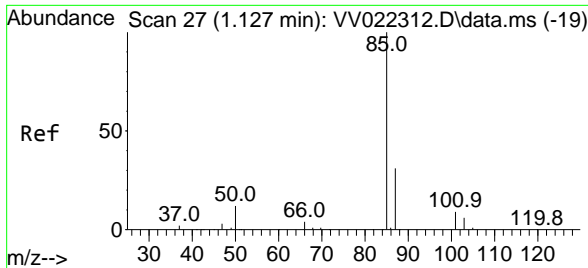
(#) = qualifier out of range (m) = manual integration (+) = signals summed

Data Path : Z:\voasrv\HPCHEM1\MSVOA_V\Data\VV092421\
 Data File : VV022325.D
 Acq On : 24 Sep 2021 18:43
 Operator : SY/MD
 Sample : VSTDCCC005EC
 Misc : 25.0mL/MSVOA_V/WATER
 ALS Vial : 16 Sample Multiplier: 1

Instrument :
 MSVOA_V
 ClientSampled :

Quant Time: Sep 25 04:33:41 2021
 Quant Method : Z:\voasrv\HPCHEM1\MSVOA_V\Method\SFAMVTR092321WMA.M
 Quant Title : TRACE VOA SFAM1.0
 QLast Update : Sat Sep 25 04:30:06 2021
 Response via : Initial Calibration

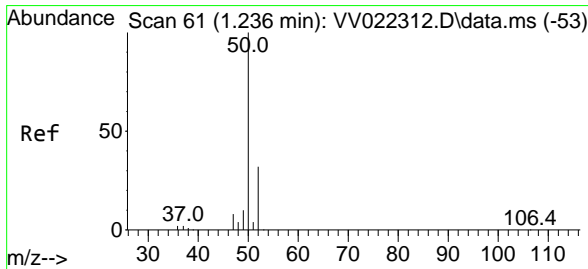
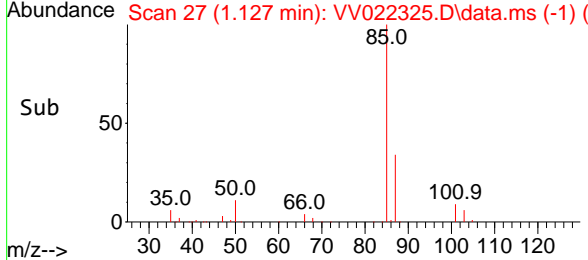
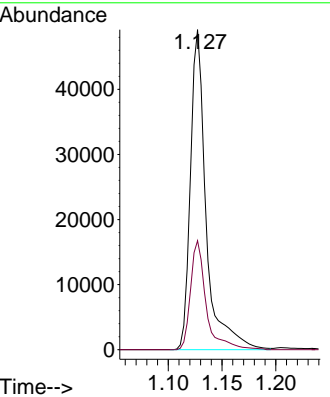
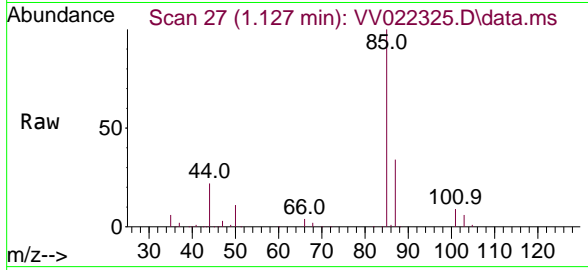




#2
 Dichlorodifluoromethane
 Concen: 4.885 ug/L
 RT: 1.127 min Scan# 27
 Delta R.T. 0.000 min
 Lab File: VV022325.D
 Acq: 24 Sep 2021 18:43

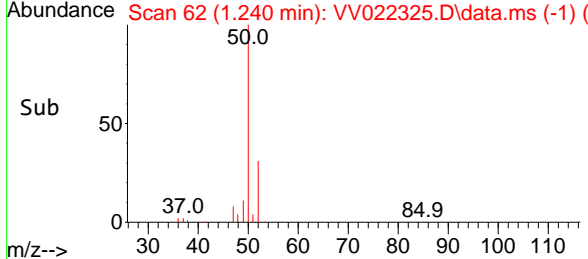
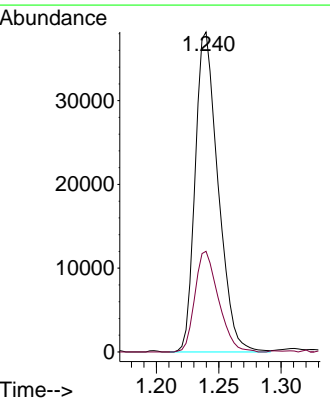
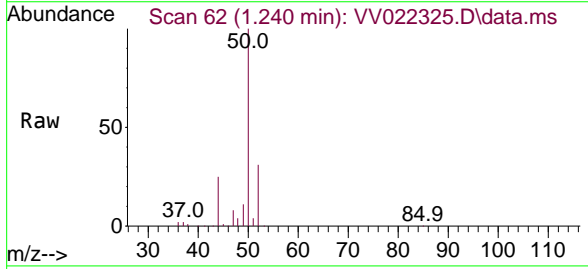
Instrument :
 MSVOA_V
 ClientSampled :

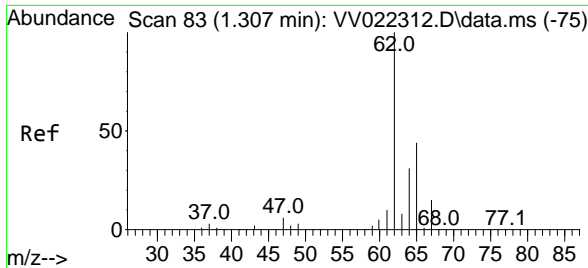
Tgt Ion: 85 Resp: 49936
 Ion Ratio Lower Upper
 85 100
 87 33.9 26.4 39.6



#3
 Chloromethane
 Concen: 4.789 ug/L
 RT: 1.240 min Scan# 62
 Delta R.T. 0.003 min
 Lab File: VV022325.D
 Acq: 24 Sep 2021 18:43

Tgt Ion: 50 Resp: 48917
 Ion Ratio Lower Upper
 50 100
 52 31.4 22.2 41.2

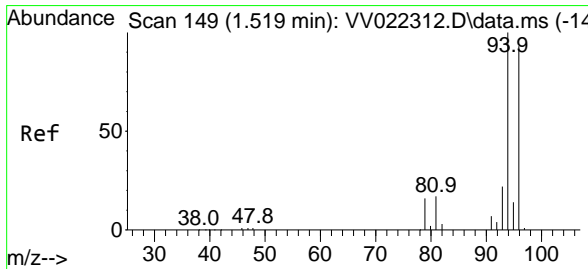
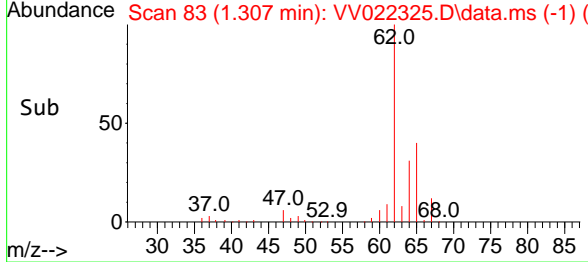
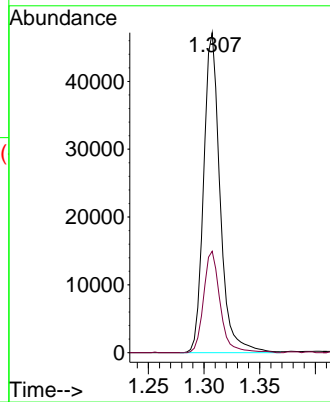
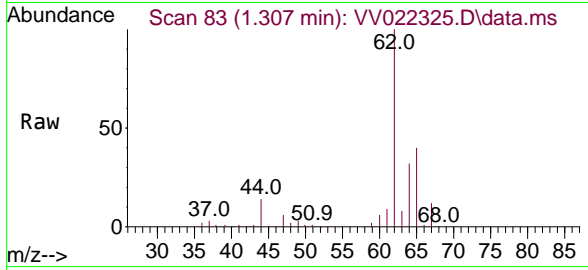




#5
 Vinyl chloride
 Concen: 4.933 ug/L
 RT: 1.307 min Scan# 83
 Delta R.T. 0.000 min
 Lab File: VV022325.D
 Acq: 24 Sep 2021 18:43

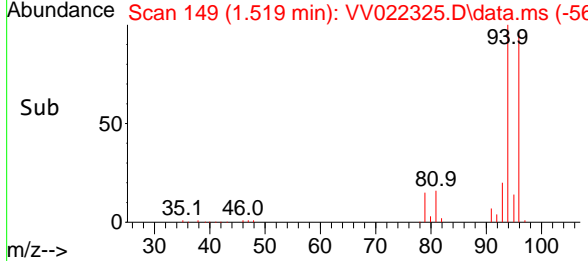
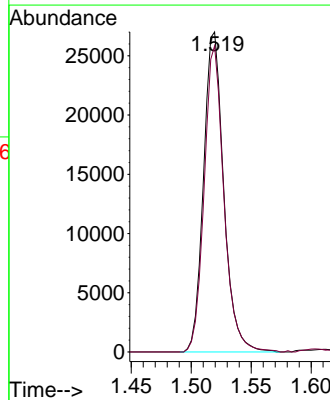
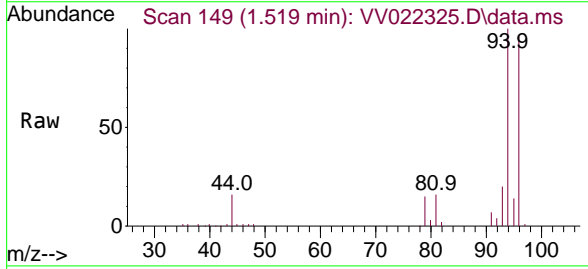
Instrument :
 MSVOA_V
 ClientSampled :

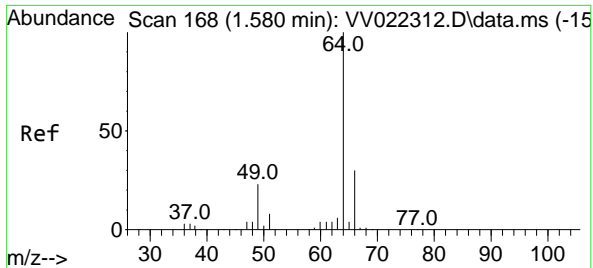
Tgt Ion: 62 Resp: 48466
 Ion Ratio Lower Upper
 62 100
 64 31.7 23.4 43.4



#6
 Bromomethane
 Concen: 5.033 ug/L
 RT: 1.519 min Scan# 149
 Delta R.T. 0.000 min
 Lab File: VV022325.D
 Acq: 24 Sep 2021 18:43

Tgt Ion: 94 Resp: 31701
 Ion Ratio Lower Upper
 94 100
 96 95.7 66.6 123.8

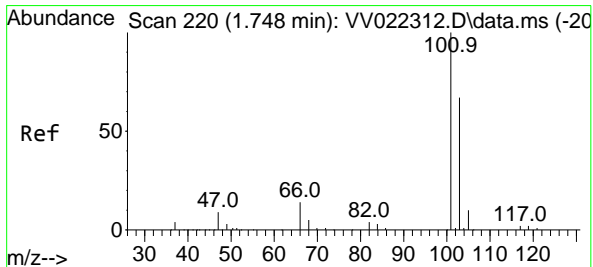
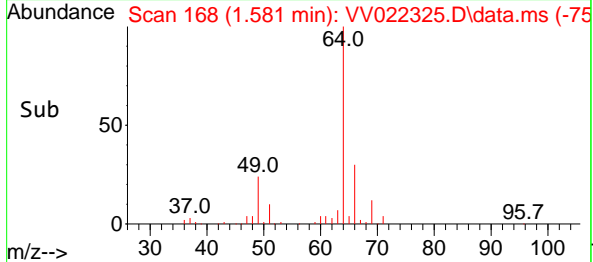
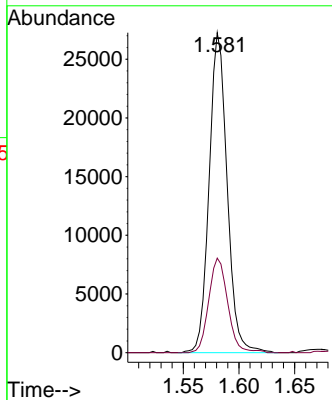
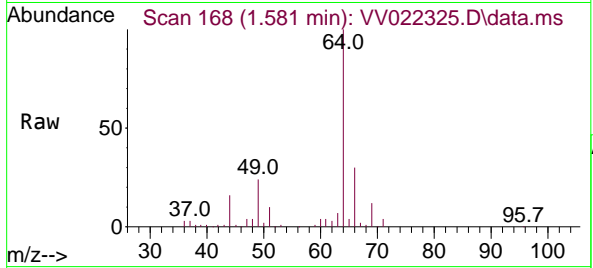




#8
 Chloroethane
 Concen: 4.948 ug/L
 RT: 1.581 min Scan# 168
 Delta R.T. 0.000 min
 Lab File: VV022325.D
 Acq: 24 Sep 2021 18:43

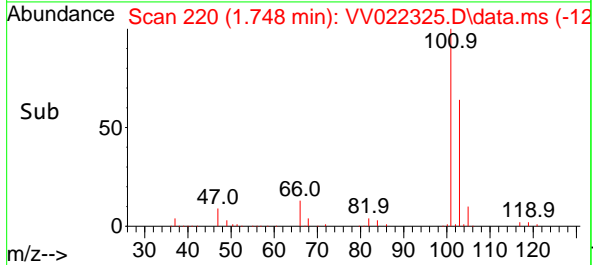
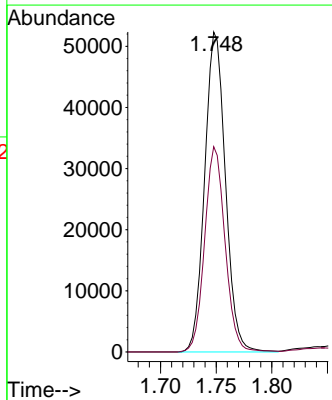
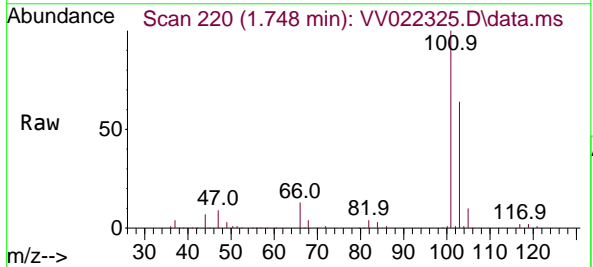
Instrument :
 MSVOA_V
 ClientSampled :

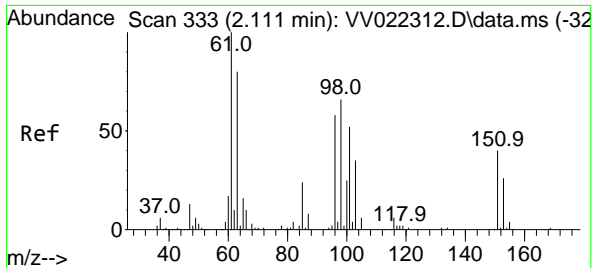
Tgt Ion: 64 Resp: 30615
 Ion Ratio Lower Upper
 64 100
 66 29.5 23.6 43.8



#9
 Trichlorofluoromethane
 Concen: 4.997 ug/L
 RT: 1.748 min Scan# 220
 Delta R.T. 0.000 min
 Lab File: VV022325.D
 Acq: 24 Sep 2021 18:43

Tgt Ion:101 Resp: 67903
 Ion Ratio Lower Upper
 101 100
 103 63.1 51.3 76.9



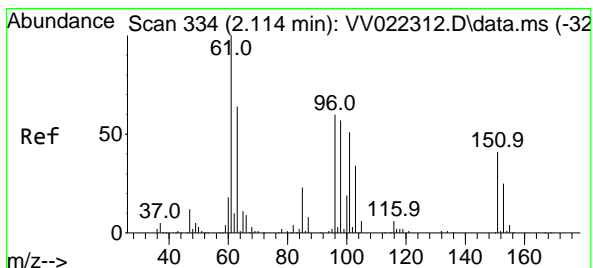
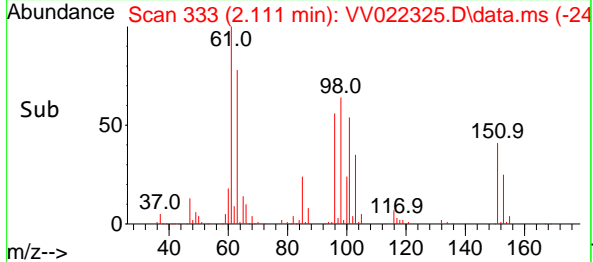
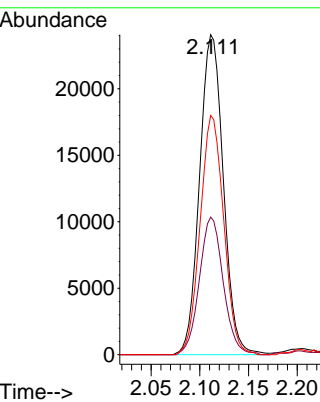
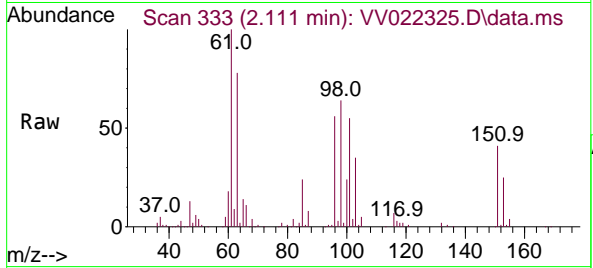


#10
 1,1,2-Trichloro-1,2,2-trifluoroethane
 Concen: 5.038 ug/L
 RT: 2.111 min Scan# 333
 Delta R.T. 0.000 min
 Lab File: VV022325.D
 Acq: 24 Sep 2021 18:43

Instrument :
 MSVOA_V
 ClientSampled :

Tgt Ion:101 Resp: 40801

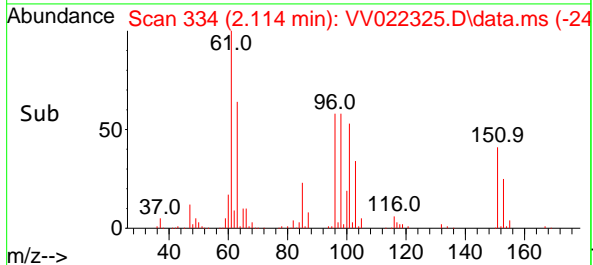
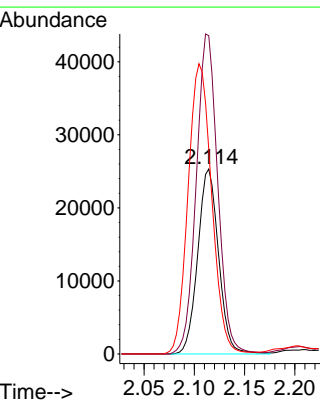
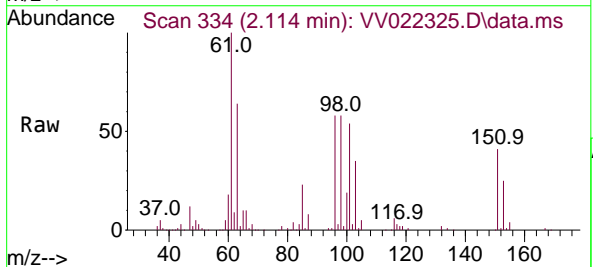
Ion	Ratio	Lower	Upper
101	100		
85	43.1	35.2	52.8
151	74.2	58.8	88.2

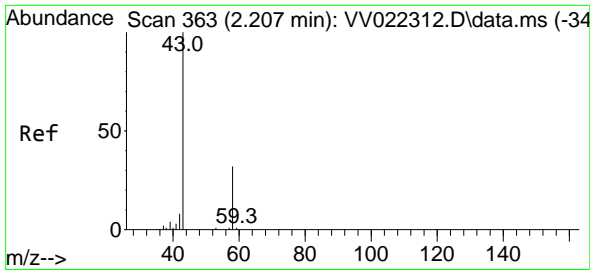


#12
 1,1-Dichloroethene
 Concen: 4.942 ug/L
 RT: 2.114 min Scan# 334
 Delta R.T. 0.000 min
 Lab File: VV022325.D
 Acq: 24 Sep 2021 18:43

Tgt Ion: 96 Resp: 36459

Ion	Ratio	Lower	Upper
96	100		
61	172.1	127.4	236.6
63	110.7	100.0	185.6

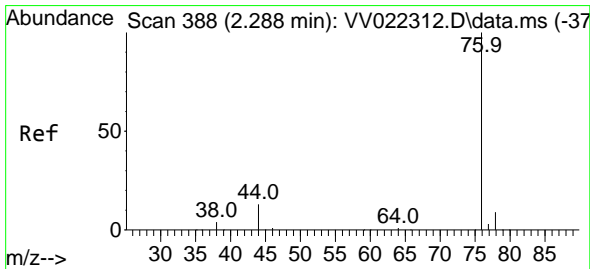
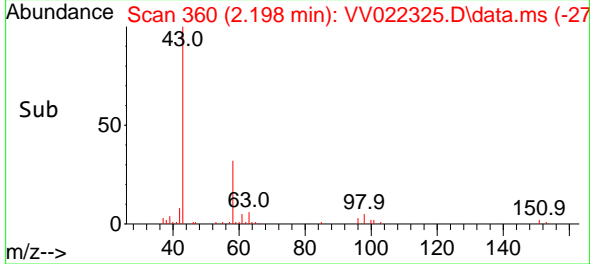
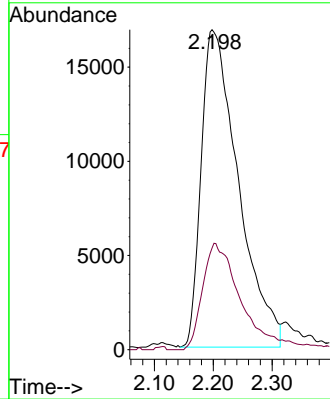
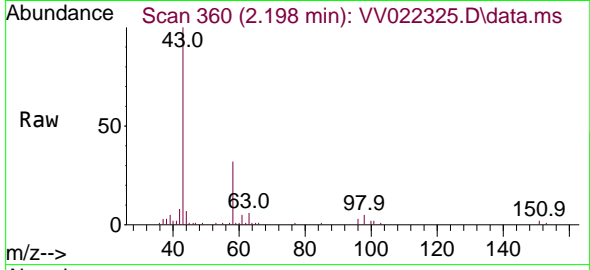




#13
 Acetone
 Concen: 48.223 ug/L
 RT: 2.198 min Scan# 360
 Delta R.T. -0.009 min
 Lab File: VV022325.D
 Acq: 24 Sep 2021 18:43

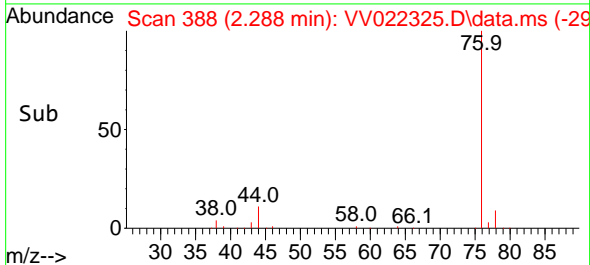
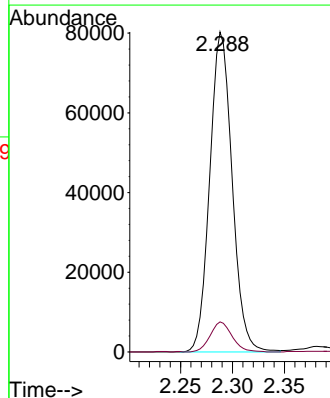
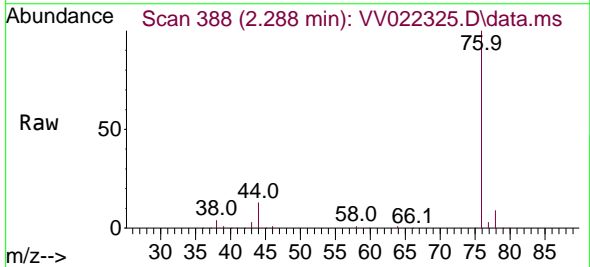
Instrument :
 MSVOA_V
 ClientSampled :

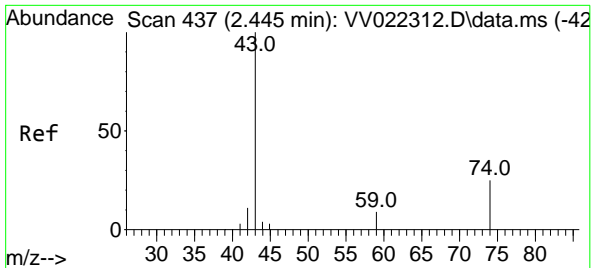
Tgt Ion: 43 Resp: 73907
 Ion Ratio Lower Upper
 43 100
 58 34.5 0.0 66.2



#14
 Carbon disulfide
 Concen: 4.796 ug/L
 RT: 2.288 min Scan# 388
 Delta R.T. 0.000 min
 Lab File: VV022325.D
 Acq: 24 Sep 2021 18:43

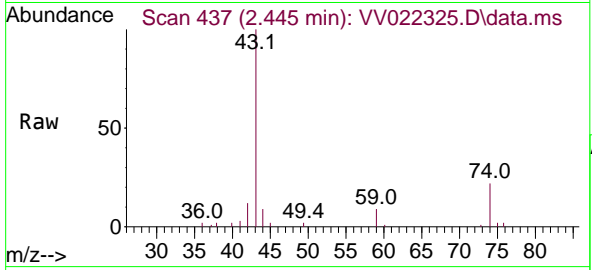
Tgt Ion: 76 Resp: 120308
 Ion Ratio Lower Upper
 76 100
 78 9.4 7.5 11.3



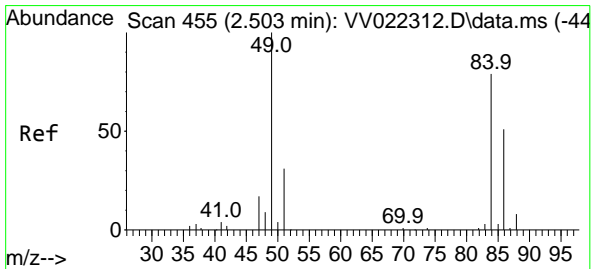
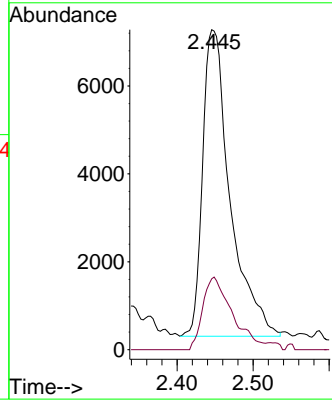
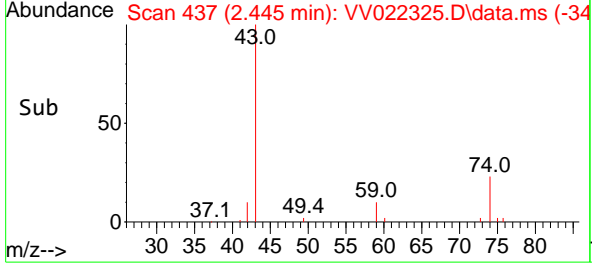


#15
Methyl Acetate
Concen: 5.145 ug/L
RT: 2.445 min Scan# 437
Delta R.T. 0.000 min
Lab File: VV022325.D
Acq: 24 Sep 2021 18:43

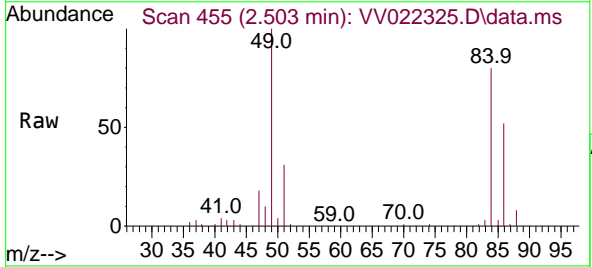
Instrument :
MSVOA_V
ClientSampled :



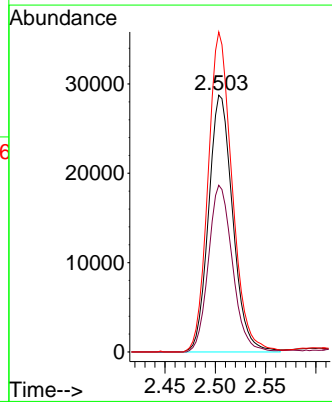
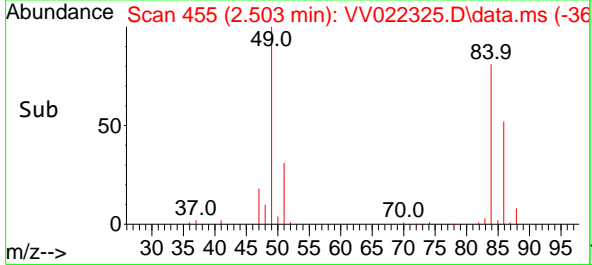
Tgt Ion: 43 Resp: 17497
Ion Ratio Lower Upper
43 100
74 25.6 17.5 26.3

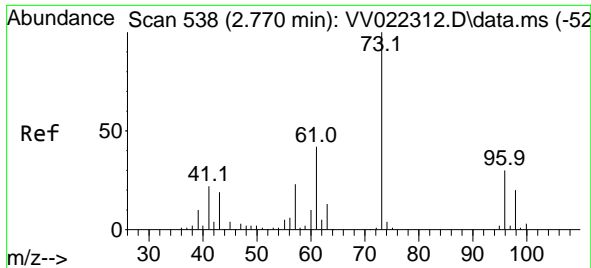


#16
Methylene chloride
Concen: 3.743 ug/L
RT: 2.503 min Scan# 455
Delta R.T. 0.000 min
Lab File: VV022325.D
Acq: 24 Sep 2021 18:43



Tgt Ion: 84 Resp: 48050
Ion Ratio Lower Upper
84 100
86 64.9 47.1 87.5
49 124.6 86.9 161.5

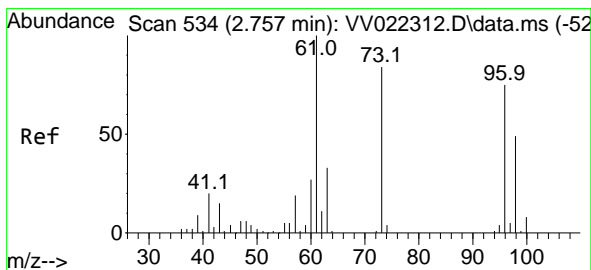
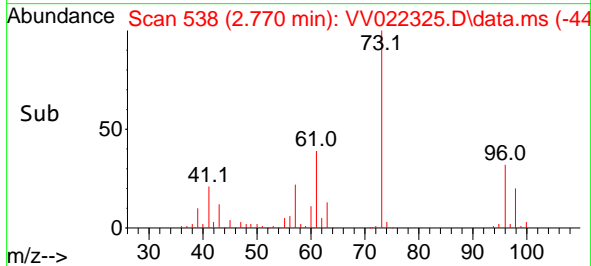
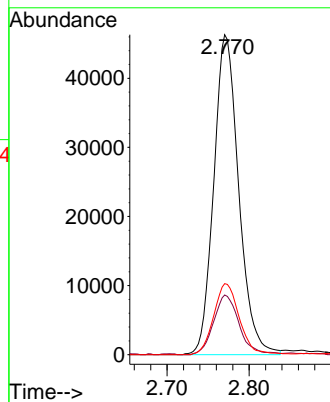
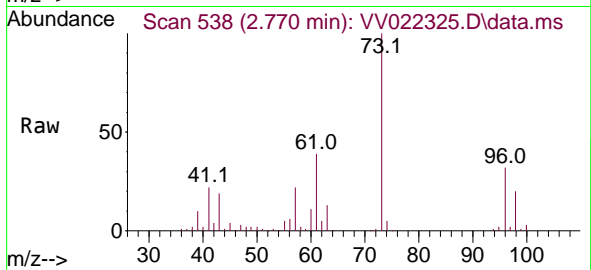




#17
 Methyl tert-butyl Ether
 Concen: 4.998 ug/L
 RT: 2.770 min Scan# 538
 Delta R.T. 0.000 min
 Lab File: VV022325.D
 Acq: 24 Sep 2021 18:43

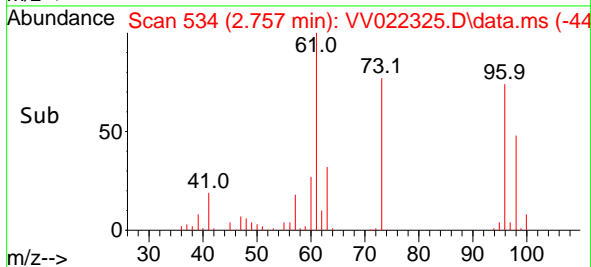
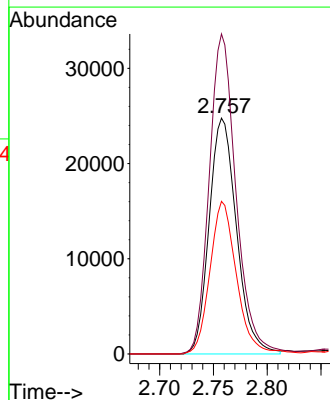
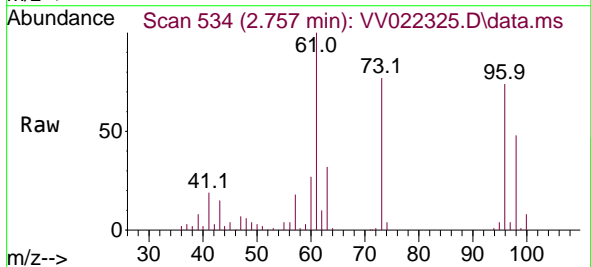
Instrument :
 MSVOA_V
 ClientSampled :

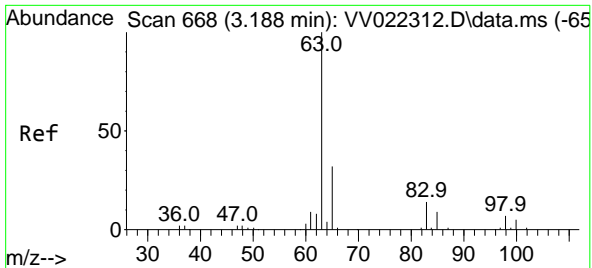
Tgt Ion	Resp	Lower	Upper
73	100		
43	18.9	15.0	22.6
57	22.9	18.3	27.5



#18
 trans-1,2-Dichloroethene
 Concen: 4.973 ug/L
 RT: 2.757 min Scan# 534
 Delta R.T. 0.000 min
 Lab File: VV022325.D
 Acq: 24 Sep 2021 18:43

Tgt Ion	Resp	Lower	Upper
96	100		
61	135.6	92.0	170.9
98	64.7	44.7	83.1

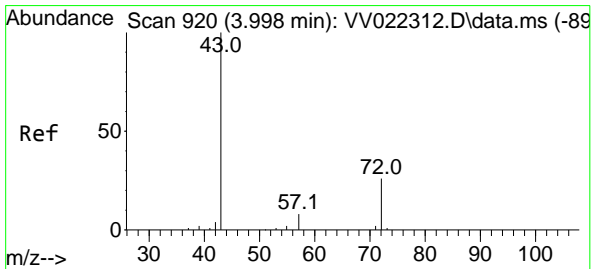
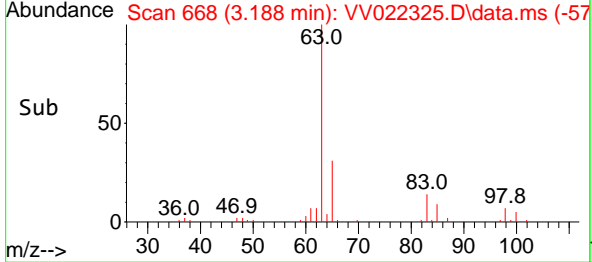
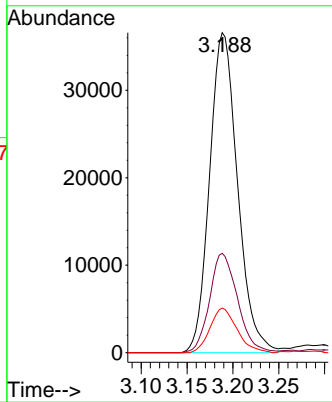
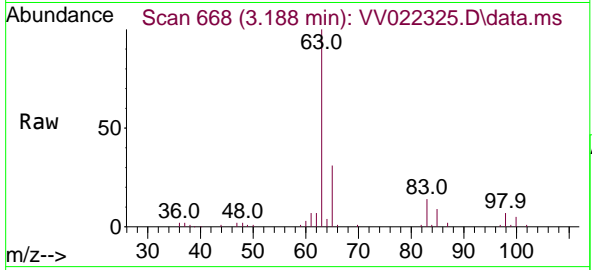




#19
 1,1-Dichloroethane
 Concen: 5.002 ug/L
 RT: 3.188 min Scan# 668
 Delta R.T. 0.000 min
 Lab File: VV022325.D
 Acq: 24 Sep 2021 18:43

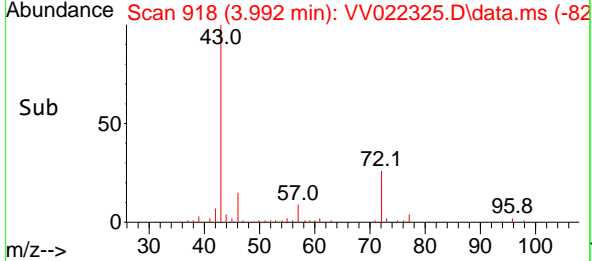
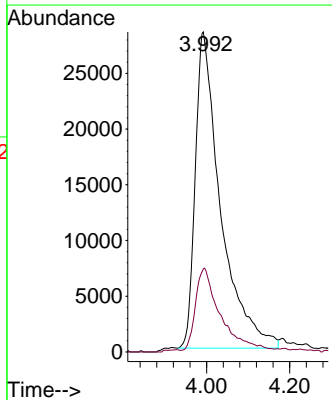
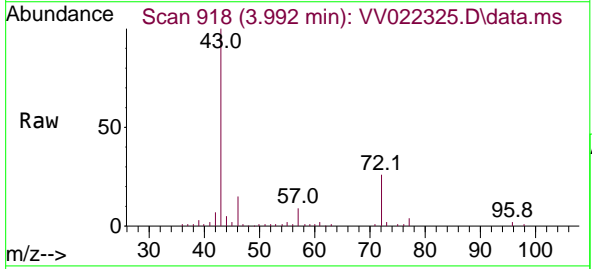
Instrument :
 MSVOA_V
 ClientSampled :

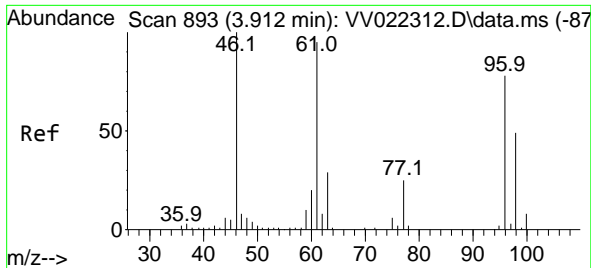
Tgt Ion	Resp	Lower	Upper
63	100		
65	31.0	20.6	38.4
83	14.0	9.4	17.4



#21
 2-Butanone
 Concen: 51.671 ug/L
 RT: 3.992 min Scan# 918
 Delta R.T. -0.006 min
 Lab File: VV022325.D
 Acq: 24 Sep 2021 18:43

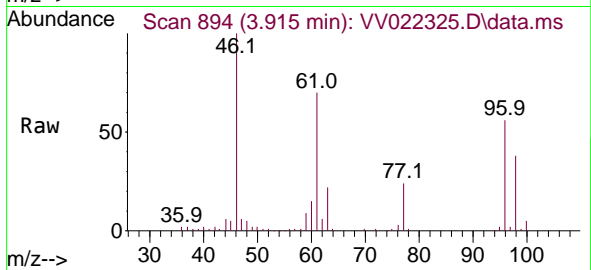
Tgt Ion	Resp	Lower	Upper
43	100		
72	24.6	12.4	37.2



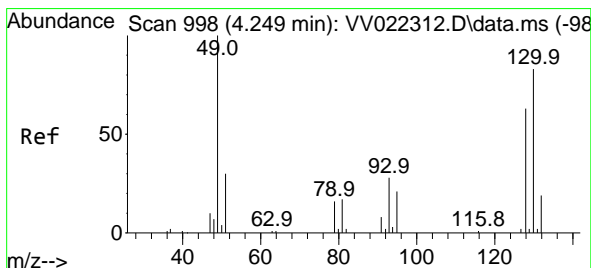
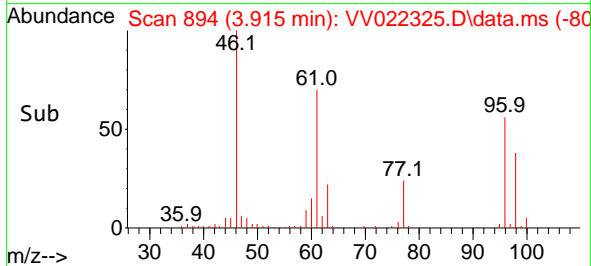
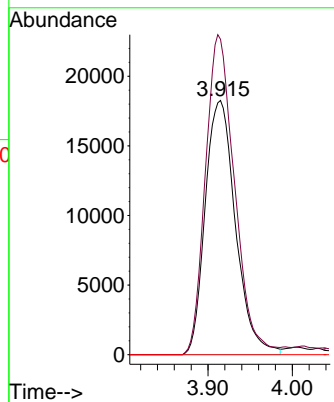


#22
 cis-1,2-Dichloroethene
 Concen: 5.210 ug/L
 RT: 3.915 min Scan# 894
 Delta R.T. 0.003 min
 Lab File: VV022325.D
 Acq: 24 Sep 2021 18:43

Instrument :
 MSVOA_V
 ClientSampled :

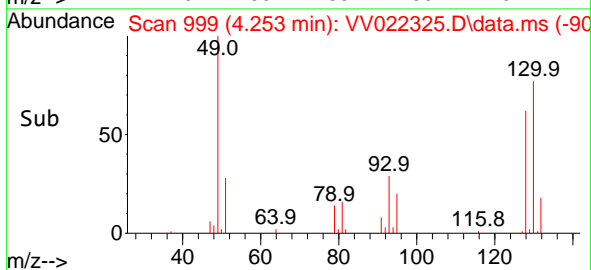
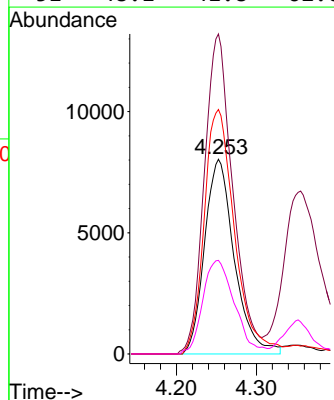
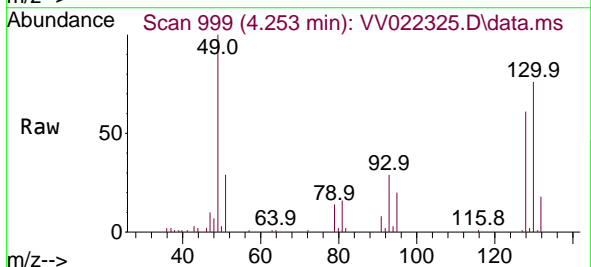


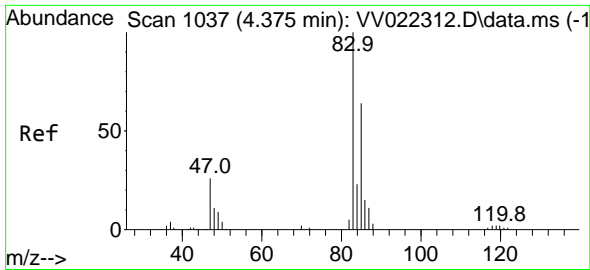
Tgt Ion: 96 Resp: 45633
 Ion Ratio Lower Upper
 96 100
 61 124.1 85.8 159.3
 68 0.0 0.0 0.0



#23
 Bromochloromethane
 Concen: 5.023 ug/L
 RT: 4.253 min Scan# 999
 Delta R.T. 0.003 min
 Lab File: VV022325.D
 Acq: 24 Sep 2021 18:43

Tgt Ion:128 Resp: 20770
 Ion Ratio Lower Upper
 128 100
 49 164.4 110.9 205.9
 130 125.6 88.3 163.9
 51 48.1 41.8 62.6

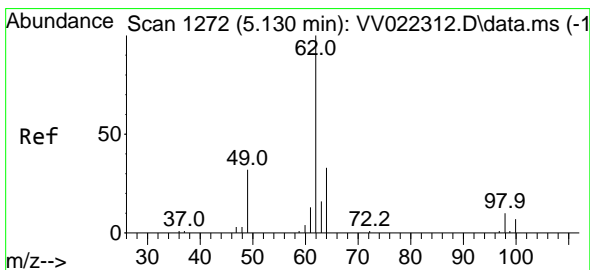
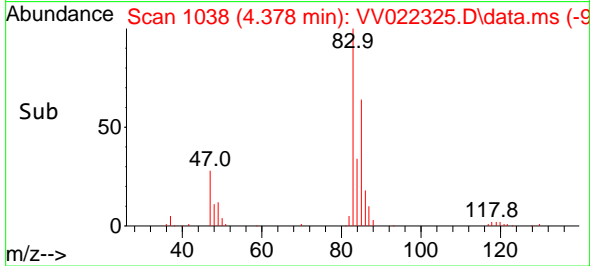
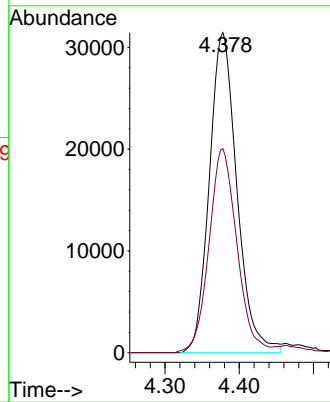
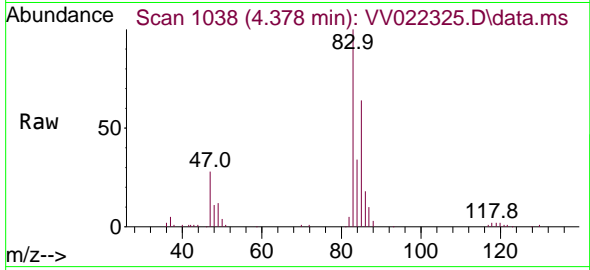




#25
 Chloroform
 Concen: 5.106 ug/L
 RT: 4.378 min Scan# 1038
 Delta R.T. 0.003 min
 Lab File: VV022325.D
 Acq: 24 Sep 2021 18:43

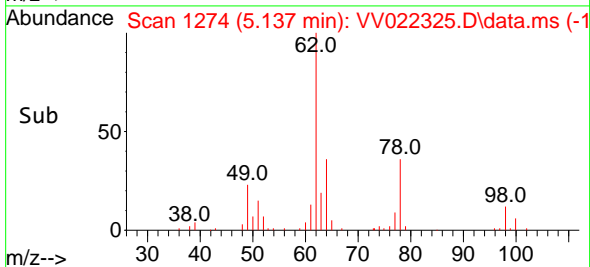
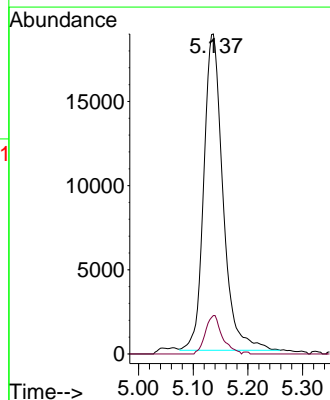
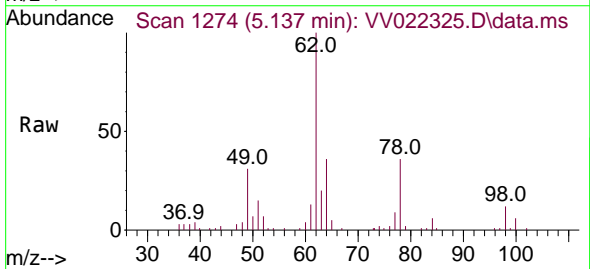
Instrument :
 MSVOA_V
 ClientSampled :

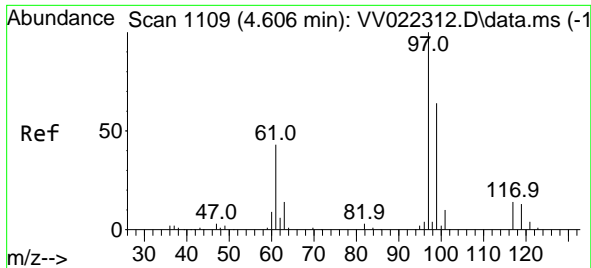
Tgt Ion: 83 Resp: 81128
 Ion Ratio Lower Upper
 83 100
 85 63.7 47.0 87.2



#27
 1,2-Dichloroethane
 Concen: 4.937 ug/L
 RT: 5.137 min Scan# 1274
 Delta R.T. 0.007 min
 Lab File: VV022325.D
 Acq: 24 Sep 2021 18:43

Tgt Ion: 62 Resp: 45804
 Ion Ratio Lower Upper
 62 100
 98 12.0 8.8 13.2

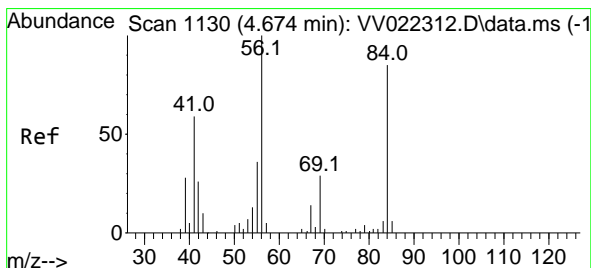
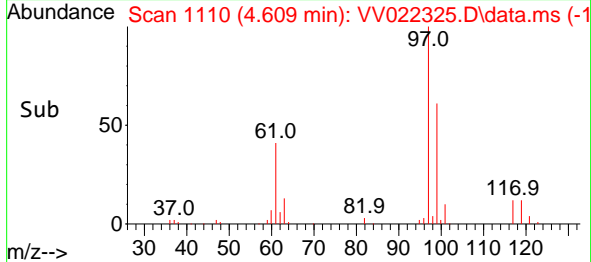
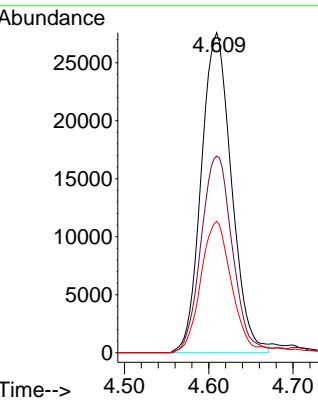
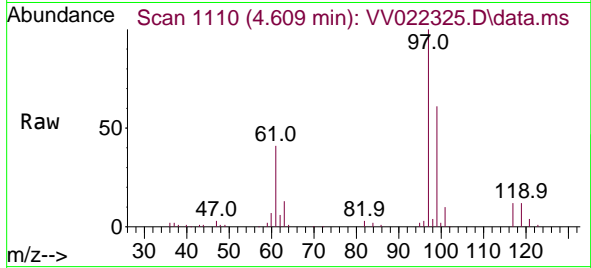




#29
 1,1,1-Trichloroethane
 Concen: 5.156 ug/L
 RT: 4.609 min Scan# 1110
 Delta R.T. 0.003 min
 Lab File: VV022325.D
 Acq: 24 Sep 2021 18:43

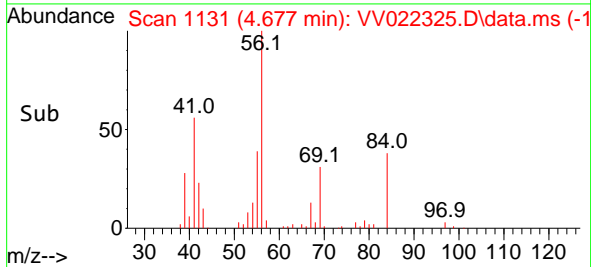
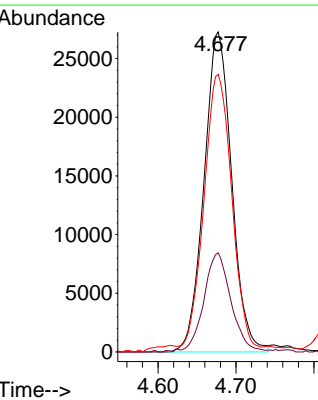
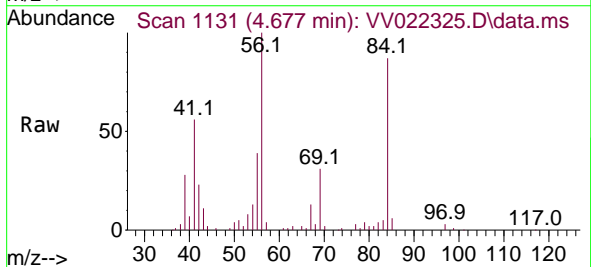
Instrument :
 MSVOA_V
 ClientSampled :

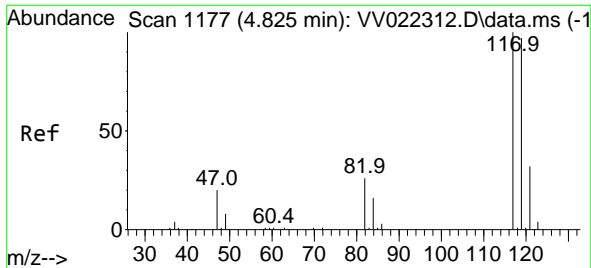
Tgt Ion	Resp	Lower	Upper
97	100		
99	63.7	51.5	77.3
61	42.0	35.5	53.3



#30
 Cyclohexane
 Concen: 5.066 ug/L
 RT: 4.677 min Scan# 1131
 Delta R.T. 0.003 min
 Lab File: VV022325.D
 Acq: 24 Sep 2021 18:43

Tgt Ion	Resp	Lower	Upper
56	100		
69	28.6	24.1	36.1
84	85.5	70.8	106.2

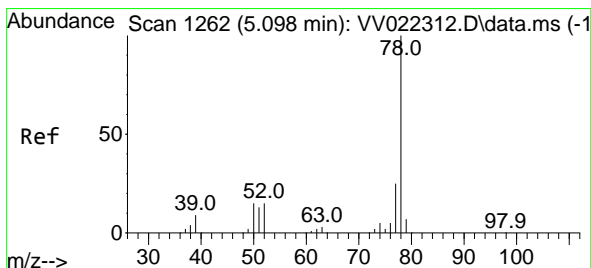
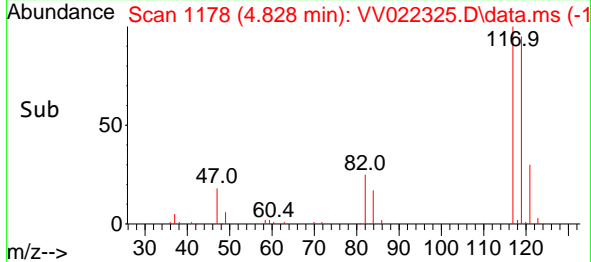
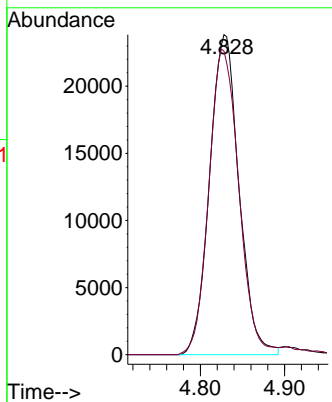
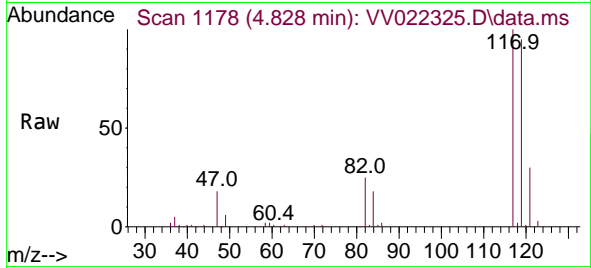




#31
 Carbon tetrachloride
 Concen: 5.104 ug/L
 RT: 4.828 min Scan# 1178
 Delta R.T. 0.003 min
 Lab File: VV022325.D
 Acq: 24 Sep 2021 18:43

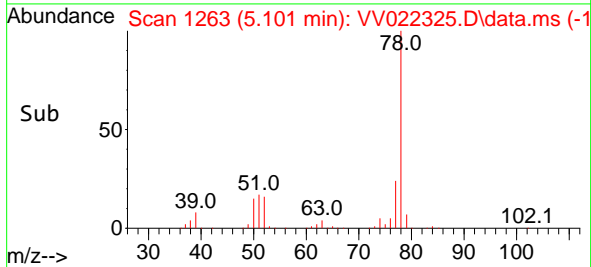
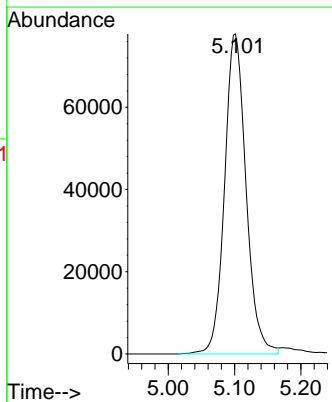
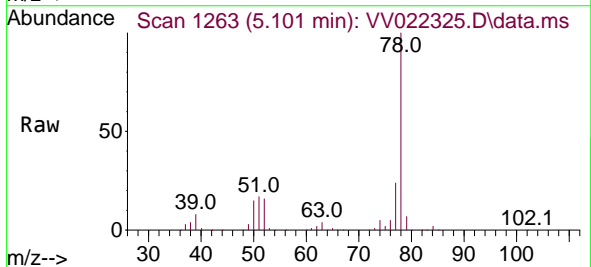
Instrument :
 MSVOA_V
 ClientSampled :

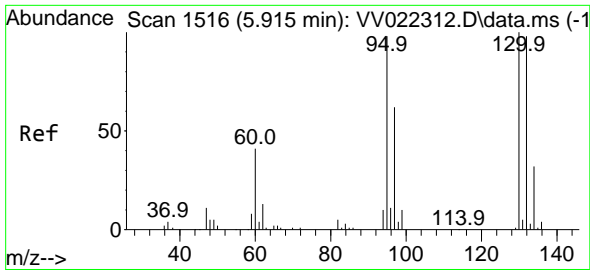
Tgt Ion:117 Resp: 57689
 Ion Ratio Lower Upper
 117 100
 119 97.4 76.5 114.7



#33
 Benzene
 Concen: 5.217 ug/L
 RT: 5.101 min Scan# 1263
 Delta R.T. 0.003 min
 Lab File: VV022325.D
 Acq: 24 Sep 2021 18:43

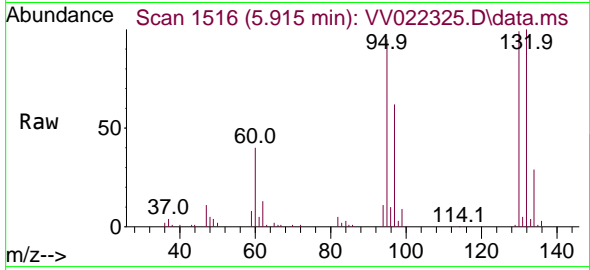
Tgt Ion: 78 Resp: 175306



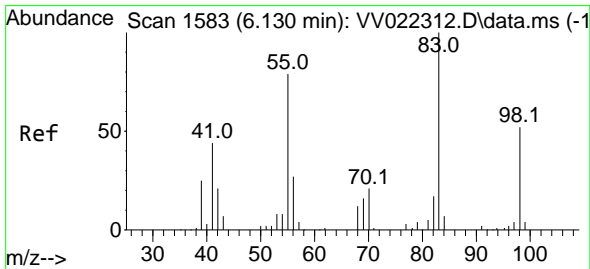
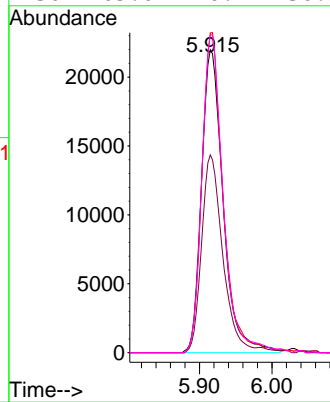
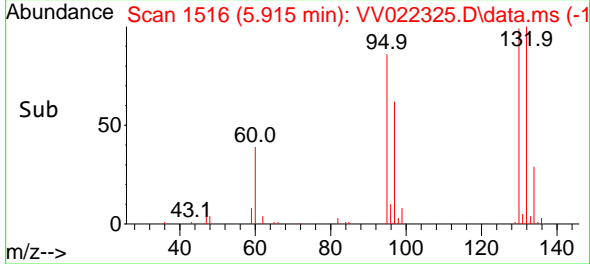


#34
 Trichloroethene
 Concen: 5.338 ug/L
 RT: 5.915 min Scan# 1516
 Delta R.T. 0.000 min
 Lab File: VV022325.D
 Acq: 24 Sep 2021 18:43

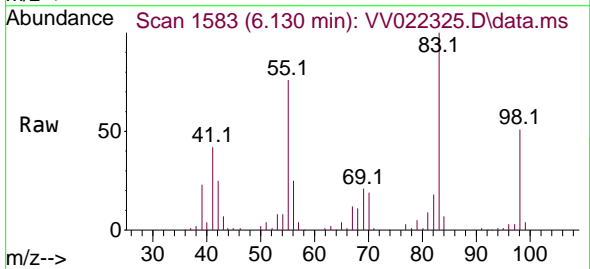
Instrument :
 MSVOA_V
 ClientSampled :



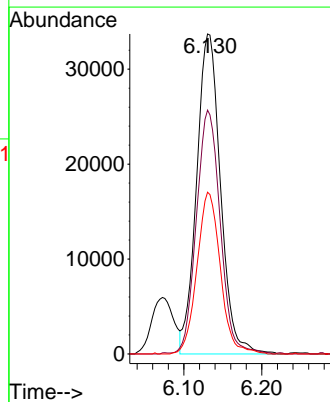
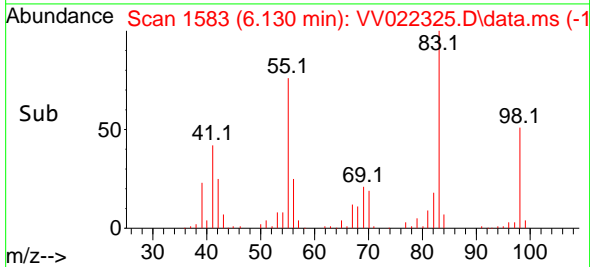
Tgt Ion: 95 Resp: 45584
 Ion Ratio Lower Upper
 95 100
 97 65.3 44.7 82.9
 132 105.6 67.5 125.3
 130 105.0 70.1 130.3

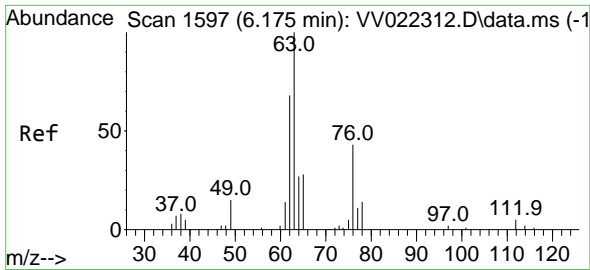


#35
 Methylcyclohexane
 Concen: 5.277 ug/L
 RT: 6.130 min Scan# 1583
 Delta R.T. 0.000 min
 Lab File: VV022325.D
 Acq: 24 Sep 2021 18:43



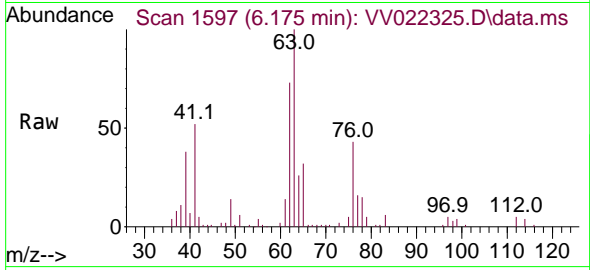
Tgt Ion: 83 Resp: 71952
 Ion Ratio Lower Upper
 83 100
 55 75.9 60.2 90.2
 98 49.4 39.5 59.3



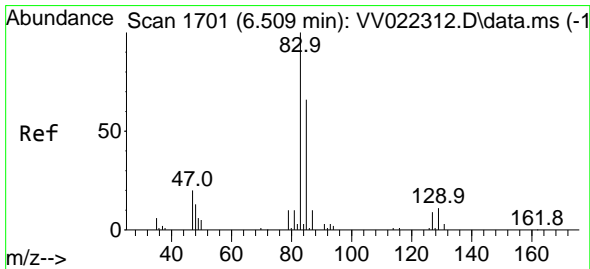
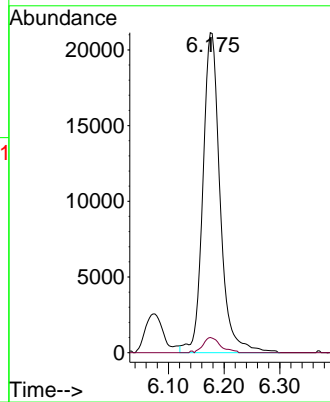
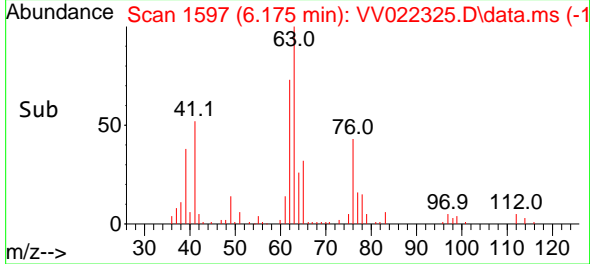


#37
 1,2-Dichloropropane
 Concen: 5.363 ug/L
 RT: 6.175 min Scan# 1597
 Delta R.T. 0.000 min
 Lab File: VV022325.D
 Acq: 24 Sep 2021 18:43

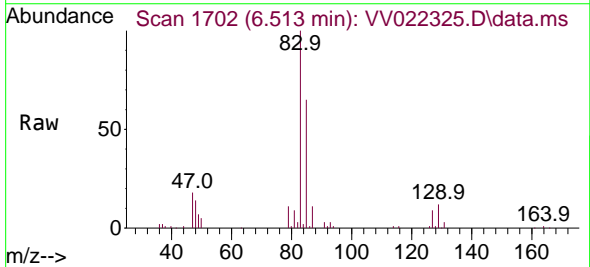
Instrument :
 MSVOA_V
 ClientSampled :



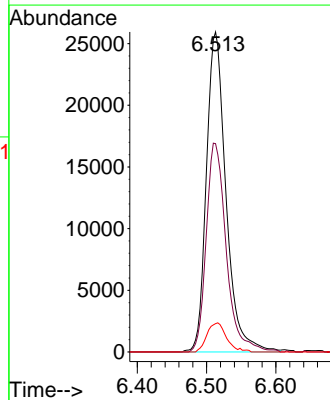
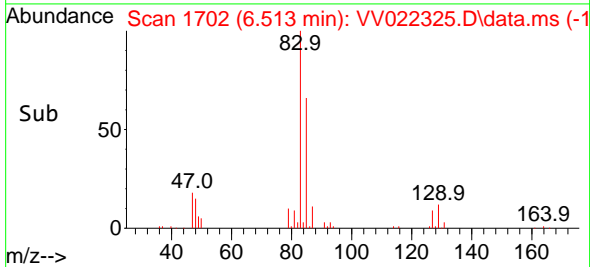
Tgt Ion: 63 Resp: 45498
 Ion Ratio Lower Upper
 63 100
 112 4.7 4.2 6.2

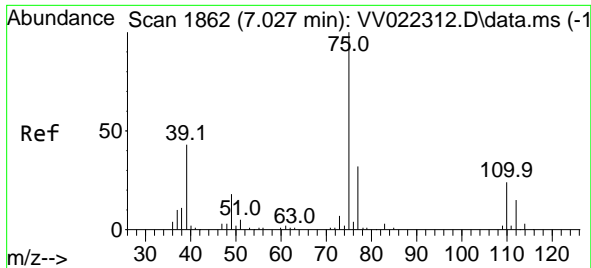


#38
 Bromodichloromethane
 Concen: 4.985 ug/L
 RT: 6.513 min Scan# 1702
 Delta R.T. 0.003 min
 Lab File: VV022325.D
 Acq: 24 Sep 2021 18:43



Tgt Ion: 83 Resp: 50954
 Ion Ratio Lower Upper
 83 100
 85 65.1 45.4 84.4
 127 8.9 7.0 10.4

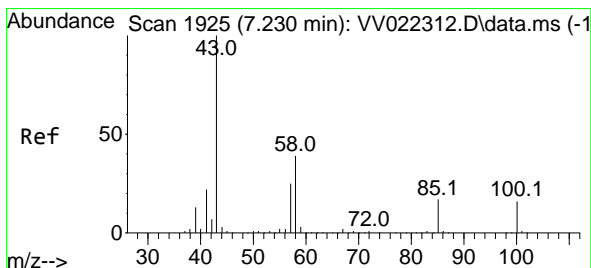
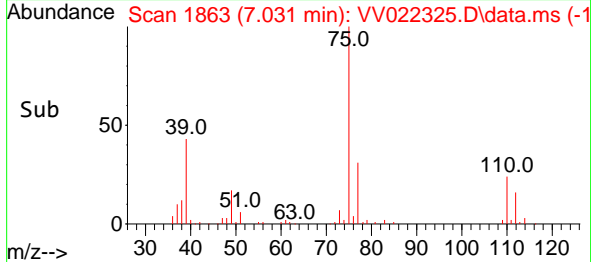
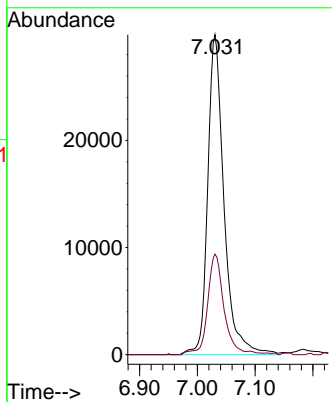
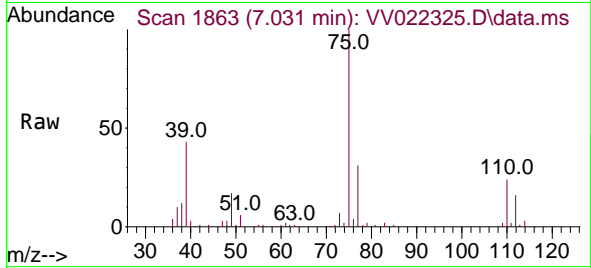




#39
 cis-1,3-Dichloropropene
 Concen: 5.211 ug/L
 RT: 7.031 min Scan# 1863
 Delta R.T. 0.003 min
 Lab File: VV022325.D
 Acq: 24 Sep 2021 18:43

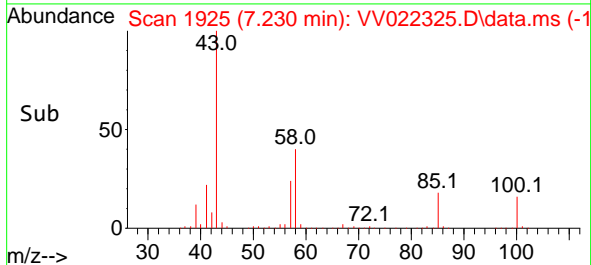
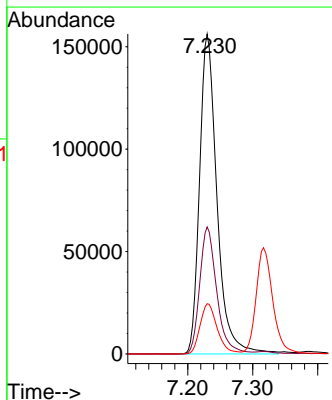
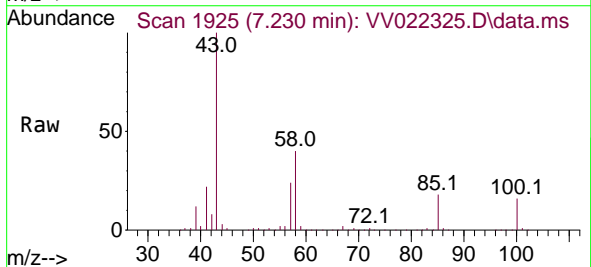
Instrument :
 MSVOA_V
 ClientSampled :

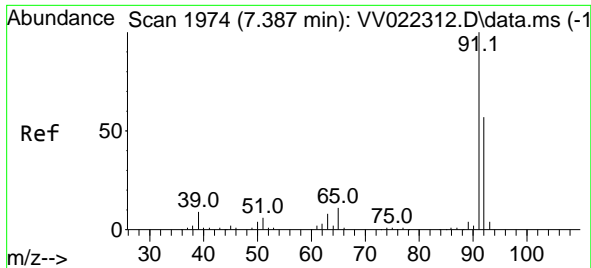
Tgt Ion: 75 Resp: 58465
 Ion Ratio Lower Upper
 75 100
 77 31.4 22.8 42.4



#40
 4-Methyl-2-pentanone
 Concen: 53.259 ug/L
 RT: 7.230 min Scan# 1925
 Delta R.T. 0.000 min
 Lab File: VV022325.D
 Acq: 24 Sep 2021 18:43

Tgt Ion: 43 Resp: 291182
 Ion Ratio Lower Upper
 43 100
 58 39.0 31.7 47.5
 100 15.6 12.2 18.4

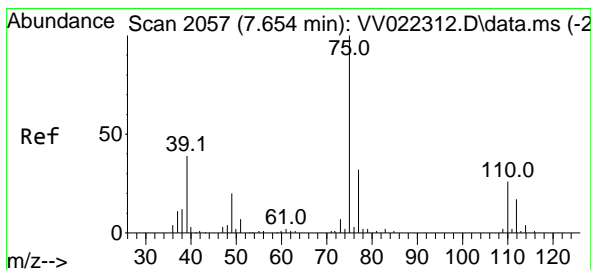
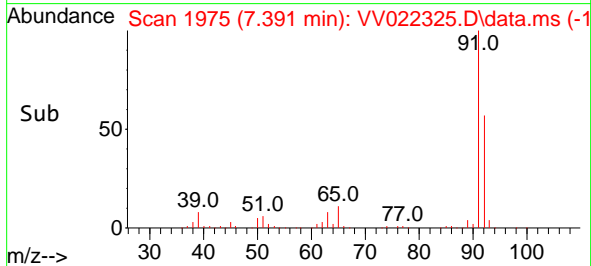
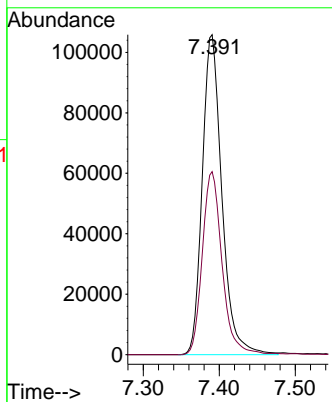
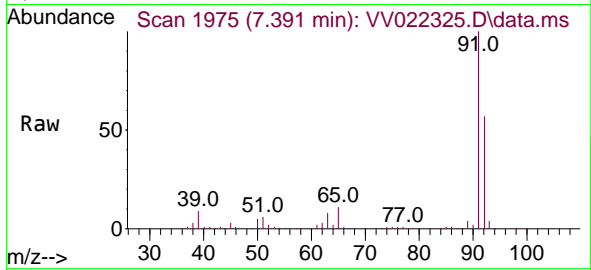




#42
 Toluene
 Concen: 5.328 ug/L
 RT: 7.391 min Scan# 1975
 Delta R.T. 0.003 min
 Lab File: VV022325.D
 Acq: 24 Sep 2021 18:43

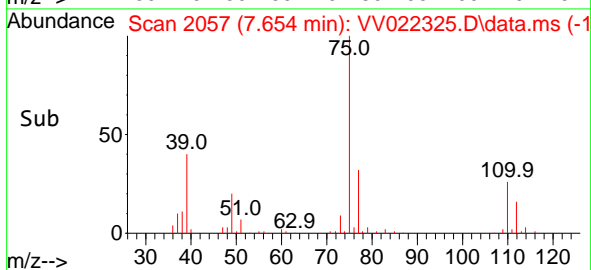
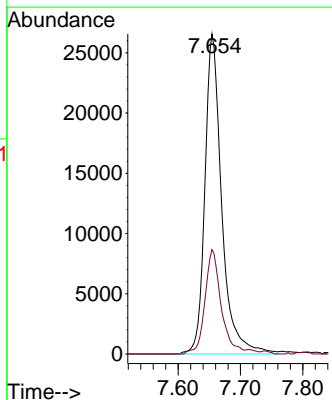
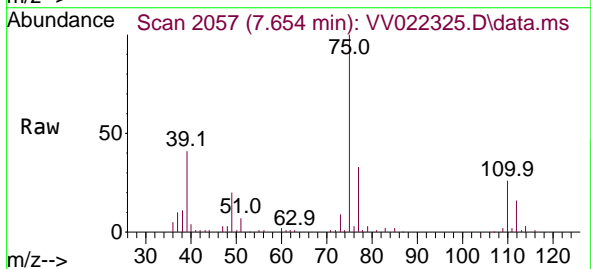
Instrument :
 MSVOA_V
 ClientSampled :

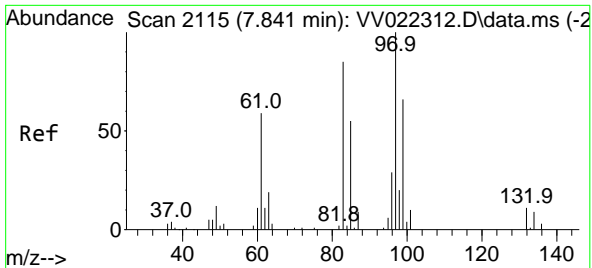
Tgt Ion: 91 Resp: 189651
 Ion Ratio Lower Upper
 91 100
 92 57.2 40.6 75.4



#44
 trans-1,3-Dichloropropene
 Concen: 5.197 ug/L
 RT: 7.654 min Scan# 2057
 Delta R.T. 0.000 min
 Lab File: VV022325.D
 Acq: 24 Sep 2021 18:43

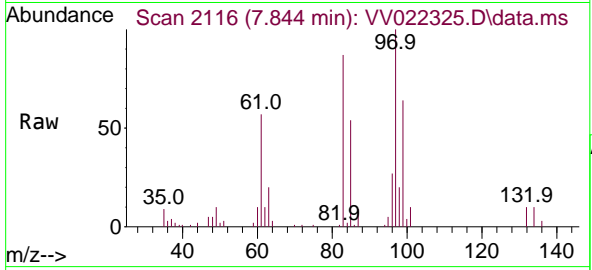
Tgt Ion: 75 Resp: 49835
 Ion Ratio Lower Upper
 75 100
 77 32.6 22.8 42.4





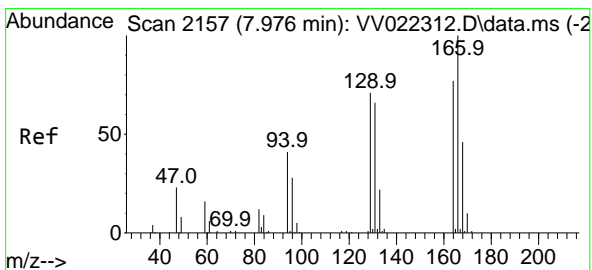
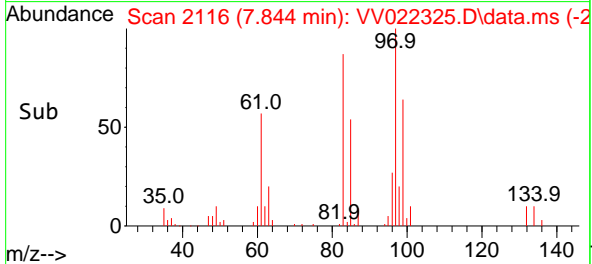
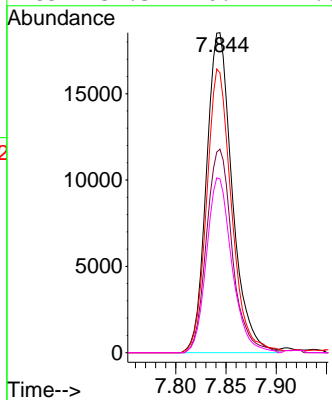
#45
 1,1,2-Trichloroethane
 Concen: 5.174 ug/L
 RT: 7.844 min Scan# 2116
 Delta R.T. 0.003 min
 Lab File: VV022325.D
 Acq: 24 Sep 2021 18:43

Instrument :
 MSVOA_V
 ClientSampled :

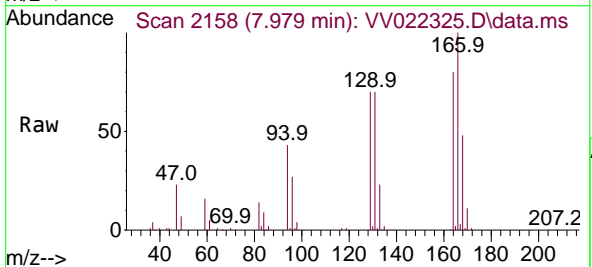


Tgt Ion: 97 Resp: 33190

Ion	Ratio	Lower	Upper
97	100		
99	63.6	42.6	79.2
83	87.4	58.9	109.5
85	54.3	40.2	74.6

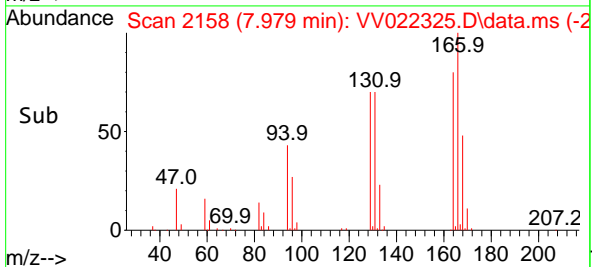
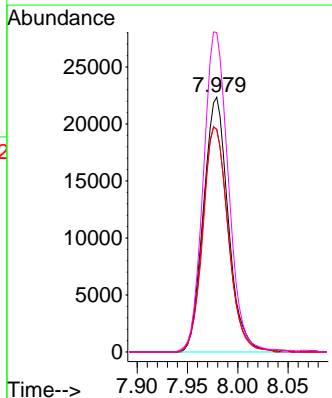


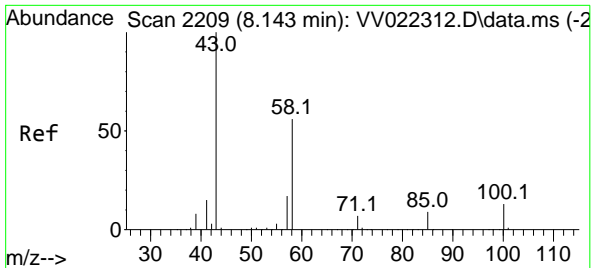
#47
 Tetrachloroethene
 Concen: 5.309 ug/L
 RT: 7.979 min Scan# 2158
 Delta R.T. 0.003 min
 Lab File: VV022325.D
 Acq: 24 Sep 2021 18:43



Tgt Ion: 164 Resp: 38447

Ion	Ratio	Lower	Upper
164	100		
129	87.5	61.9	115.1
131	87.3	61.0	113.4
166	125.5	86.4	160.4



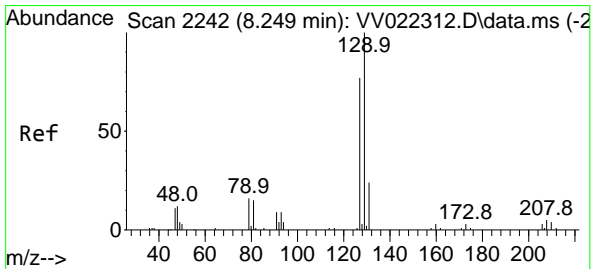
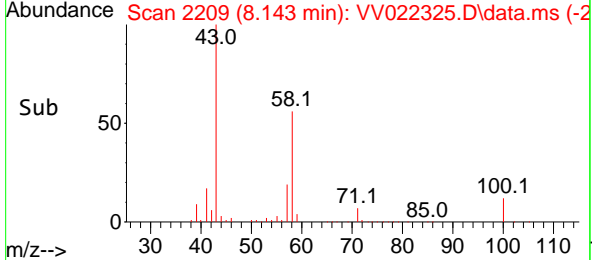
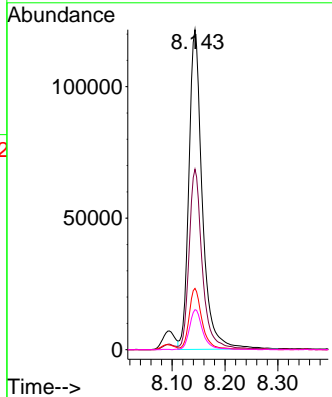
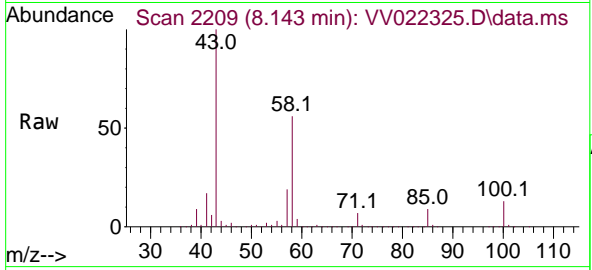


#48
 2-Hexanone
 Concen: 55.826 ug/L
 RT: 8.143 min Scan# 2209
 Delta R.T. 0.000 min
 Lab File: VV022325.D
 Acq: 24 Sep 2021 18:43

Instrument :
 MSVOA_V
 ClientSampled :

Tgt Ion: 43 Resp: 214468

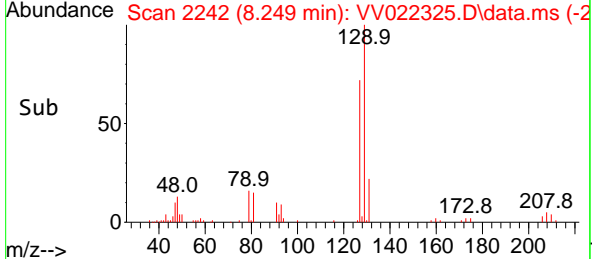
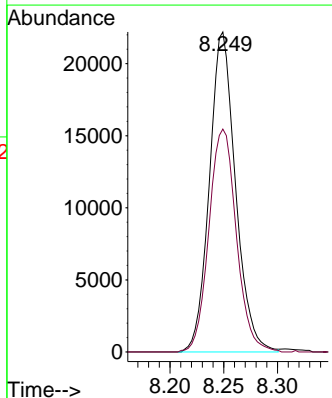
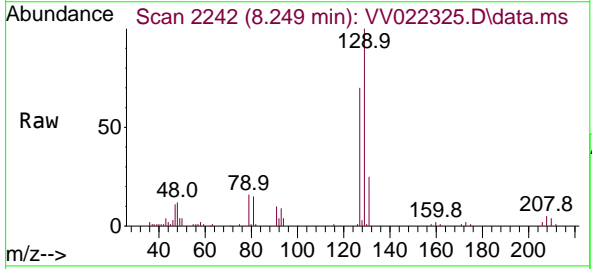
Ion	Ratio	Lower	Upper
43	100		
58	55.0	44.1	66.1
57	18.6	14.2	21.4
100	12.5	10.0	15.0

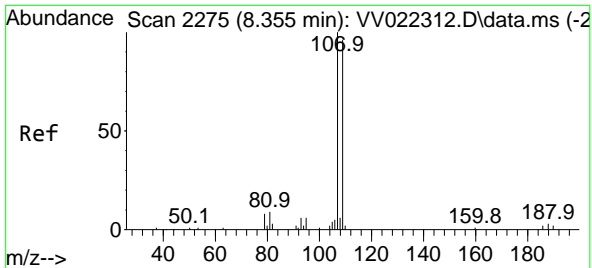


#49
 Dibromochloromethane
 Concen: 5.437 ug/L
 RT: 8.249 min Scan# 2242
 Delta R.T. 0.000 min
 Lab File: VV022325.D
 Acq: 24 Sep 2021 18:43

Tgt Ion: 129 Resp: 37506

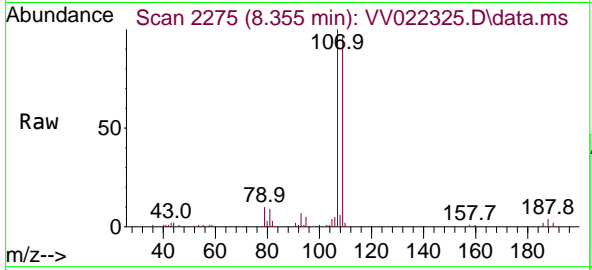
Ion	Ratio	Lower	Upper
129	100		
127	69.6	54.5	101.3



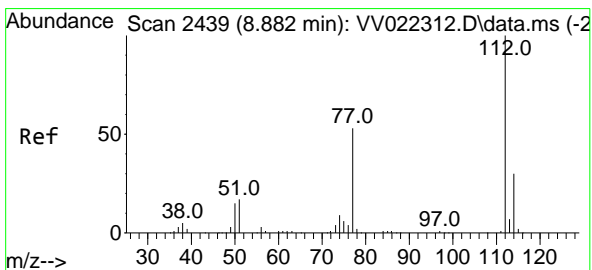
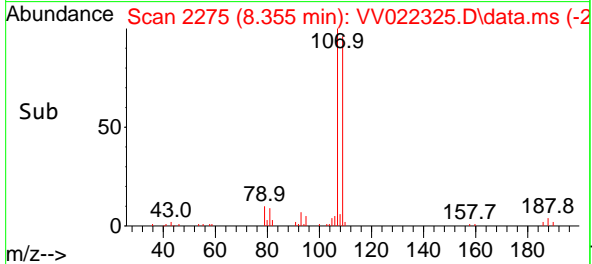
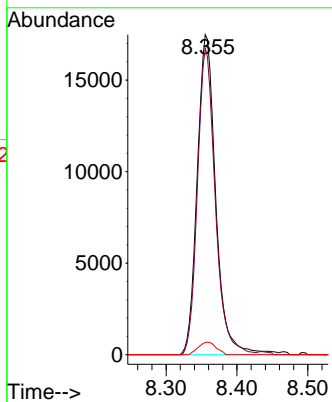


#50
 1,2-Dibromoethane
 Concen: 5.322 ug/L
 RT: 8.355 min Scan# 2275
 Delta R.T. 0.000 min
 Lab File: VV022325.D
 Acq: 24 Sep 2021 18:43

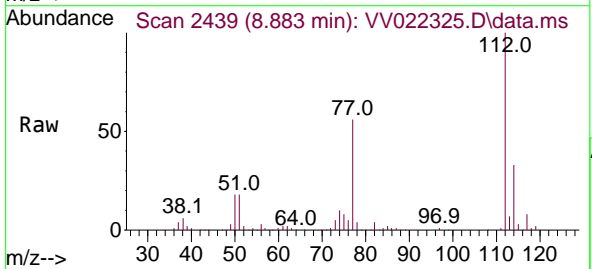
Instrument :
 MSVOA_V
 ClientSampled :



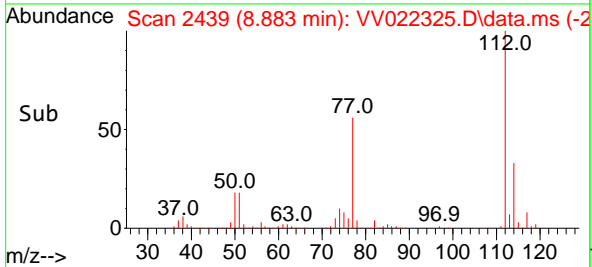
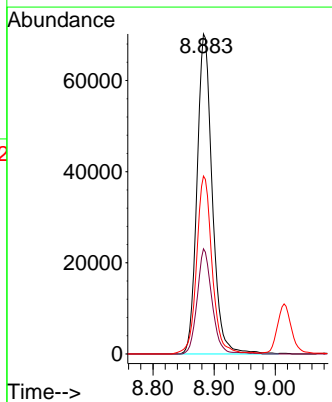
Tgt Ion:107 Resp: 31742
 Ion Ratio Lower Upper
 107 100
 109 95.7 62.8 116.6
 188 3.8 2.8 4.2

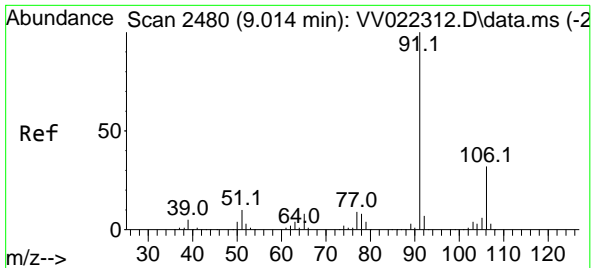


#51
 Chlorobenzene
 Concen: 5.195 ug/L
 RT: 8.883 min Scan# 2439
 Delta R.T. 0.000 min
 Lab File: VV022325.D
 Acq: 24 Sep 2021 18:43



Tgt Ion:112 Resp: 121473
 Ion Ratio Lower Upper
 112 100
 114 32.9 23.4 43.4
 77 55.6 45.2 67.8

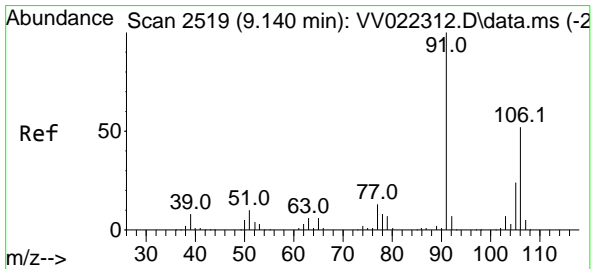
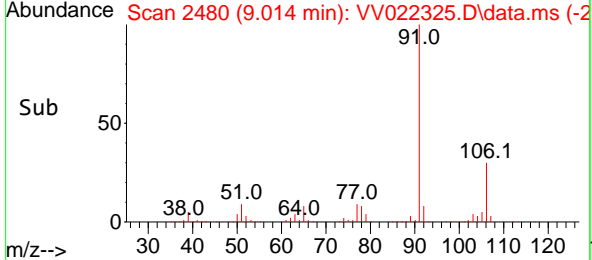
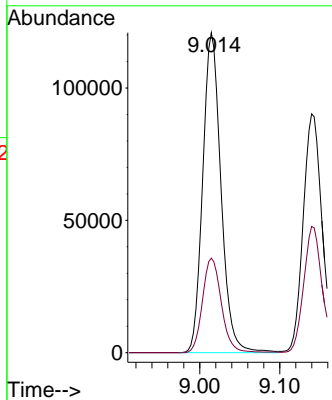
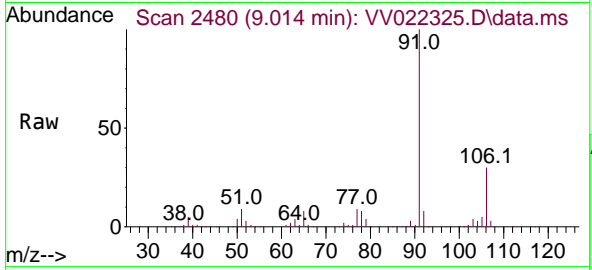




#52
 Ethylbenzene
 Concen: 5.192 ug/L
 RT: 9.014 min Scan# 2480
 Delta R.T. 0.000 min
 Lab File: VV022325.D
 Acq: 24 Sep 2021 18:43

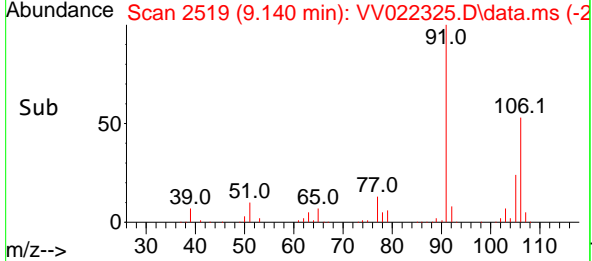
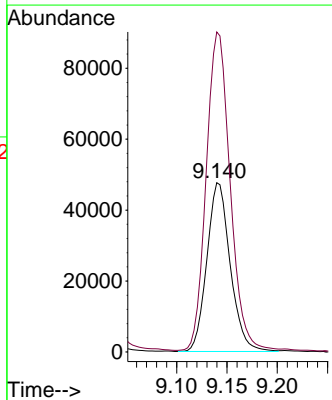
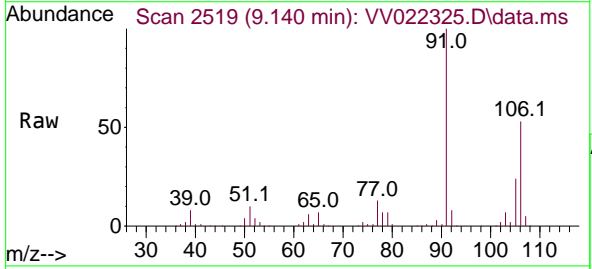
Instrument :
 MSVOA_V
 ClientSampled :

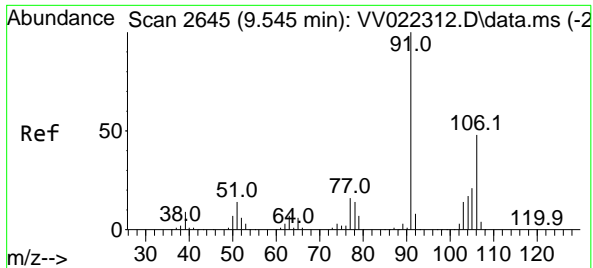
Tgt Ion: 91 Resp: 192262
 Ion Ratio Lower Upper
 91 100
 106 29.5 22.0 40.8



#53
 m,p-xylene
 Concen: 5.380 ug/L
 RT: 9.140 min Scan# 2519
 Delta R.T. 0.000 min
 Lab File: VV022325.D
 Acq: 24 Sep 2021 18:43

Tgt Ion: 106 Resp: 76937
 Ion Ratio Lower Upper
 106 100
 91 189.1 142.7 264.9

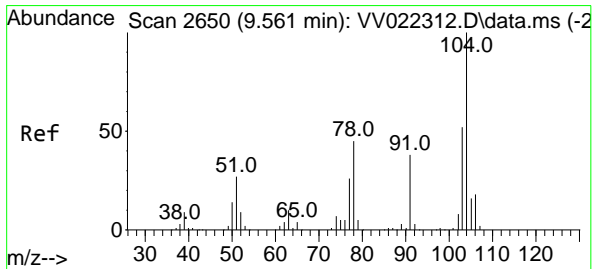
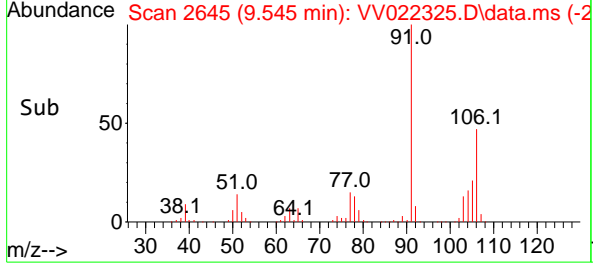
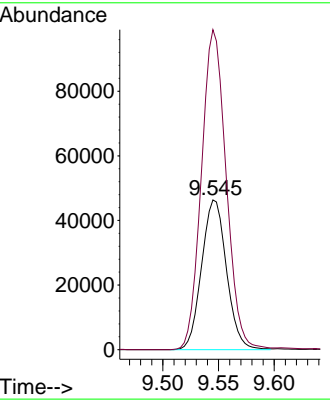
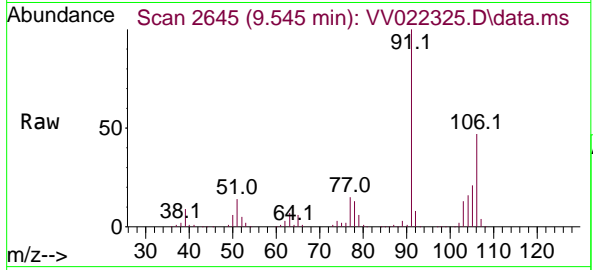




#54
 o-xylene
 Concen: 5.171 ug/L
 RT: 9.545 min Scan# 2645
 Delta R.T. 0.000 min
 Lab File: VV022325.D
 Acq: 24 Sep 2021 18:43

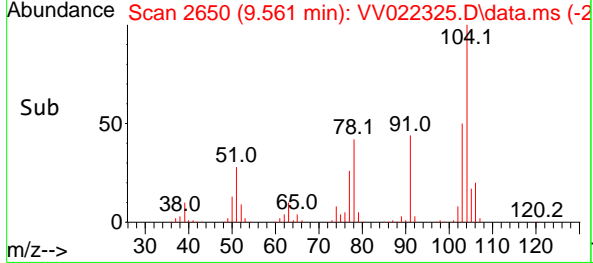
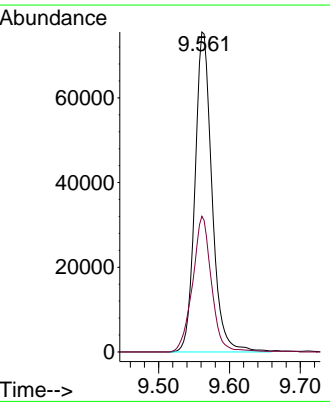
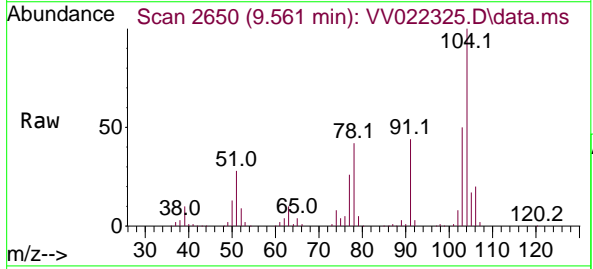
Instrument :
 MSVOA_V
 ClientSampled :

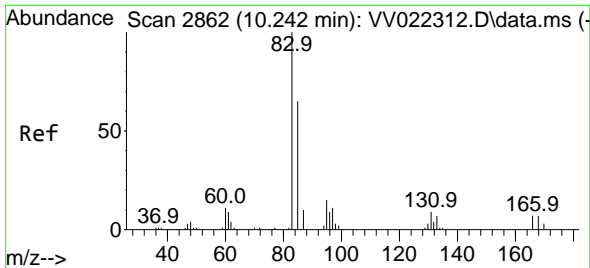
Tgt Ion:106 Resp: 72059
 Ion Ratio Lower Upper
 106 100
 91 213.7 144.7 268.7



#55
 Styrene
 Concen: 5.445 ug/L
 RT: 9.561 min Scan# 2650
 Delta R.T. 0.000 min
 Lab File: VV022325.D
 Acq: 24 Sep 2021 18:43

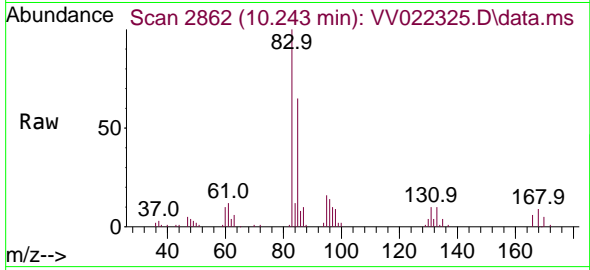
Tgt Ion:104 Resp: 125900
 Ion Ratio Lower Upper
 104 100
 78 42.4 29.1 54.1





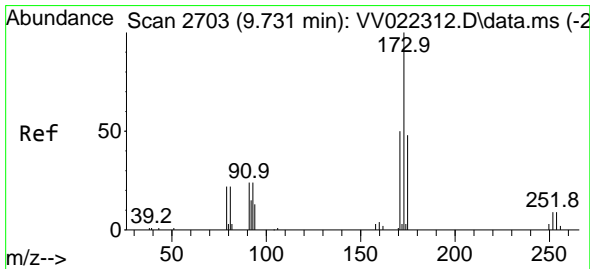
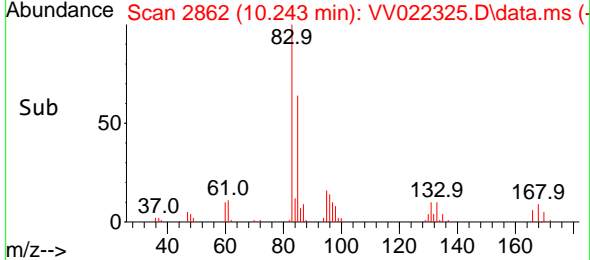
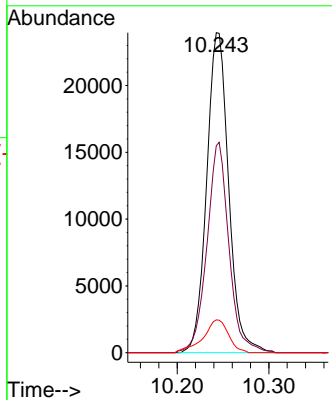
#57
 1,1,2,2-Tetrachloroethane
 Concen: 5.016 ug/L
 RT: 10.243 min Scan# 2862
 Delta R.T. 0.000 min
 Lab File: VV022325.D
 Acq: 24 Sep 2021 18:43

Instrument : MSVOA_V
 ClientSampled :

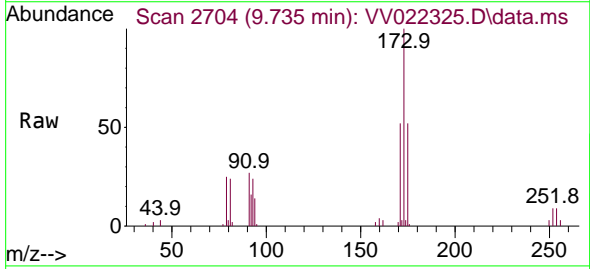


Tgt Ion: 83 Resp: 39955

Ion	Ratio	Lower	Upper
83	100		
85	64.6	45.3	84.1
131	10.2	8.9	13.3

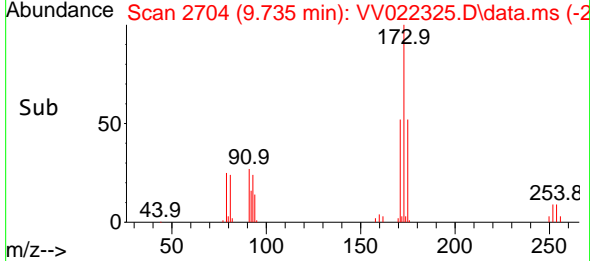
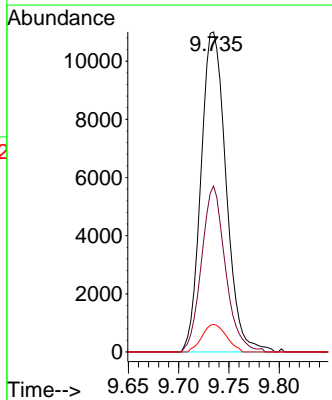


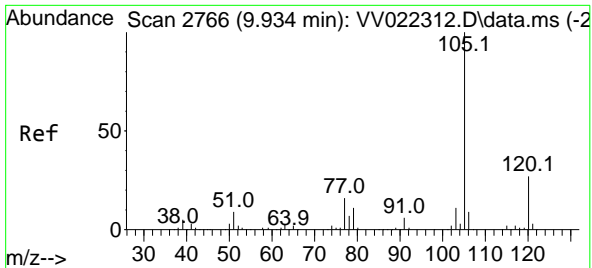
#59
 Bromoform
 Concen: 4.892 ug/L
 RT: 9.735 min Scan# 2704
 Delta R.T. 0.003 min
 Lab File: VV022325.D
 Acq: 24 Sep 2021 18:43



Tgt Ion: 173 Resp: 19102

Ion	Ratio	Lower	Upper
173	100		
175	49.2	40.9	61.3
254	8.3	7.4	11.2

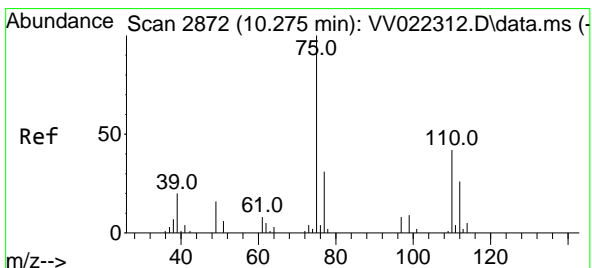
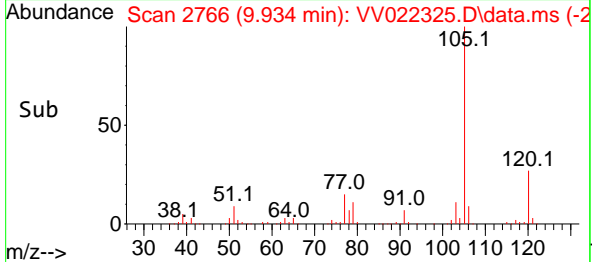
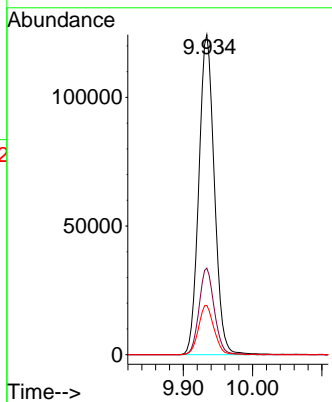
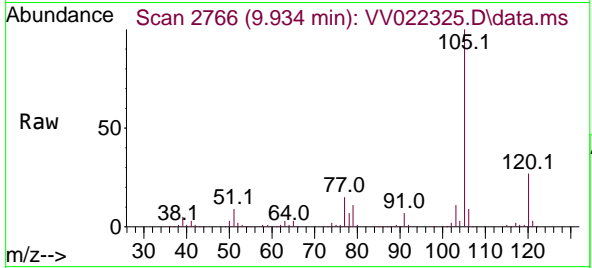




#60
 Isopropylbenzene
 Concen: 4.950 ug/L
 RT: 9.934 min Scan# 2766
 Delta R.T. 0.000 min
 Lab File: VV022325.D
 Acq: 24 Sep 2021 18:43

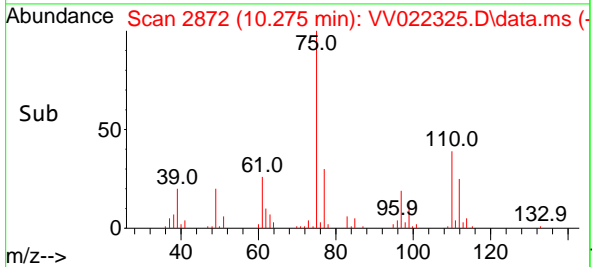
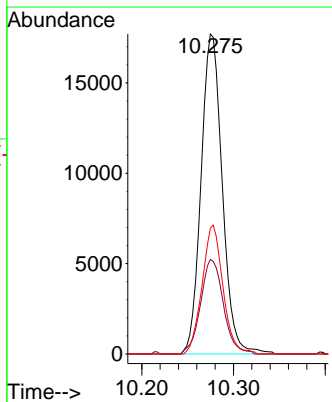
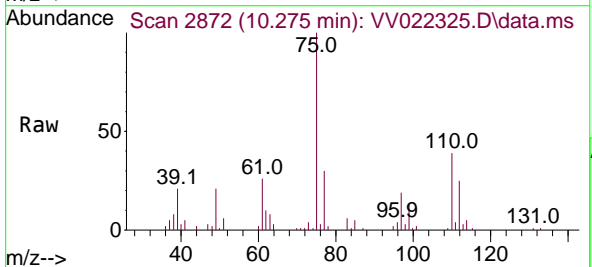
Instrument : MSVOA_V
 ClientSampled :

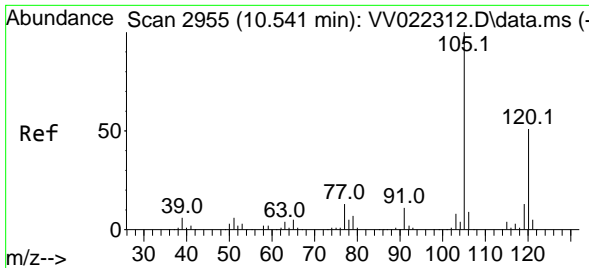
Tgt Ion	Resp	Lower	Upper
105	193077		
105	100		
120	26.6	21.3	31.9
77	15.4	12.3	18.5



#61
 1,2,3-Trichloropropane
 Concen: 4.692 ug/L
 RT: 10.275 min Scan# 2872
 Delta R.T. 0.000 min
 Lab File: VV022325.D
 Acq: 24 Sep 2021 18:43

Tgt Ion	Resp	Lower	Upper
75	28486		
75	100		
77	31.6	25.5	38.3
110	39.5	31.7	47.5

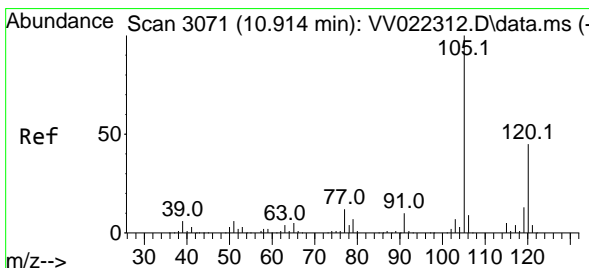
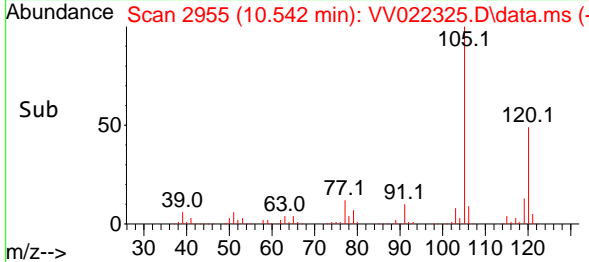
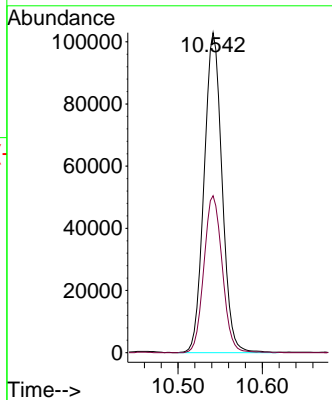
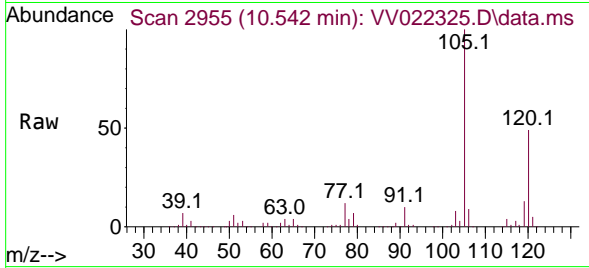




#62
 1,3,5-Trimethylbenzene
 Concen: 4.808 ug/L
 RT: 10.542 min Scan# 2955
 Delta R.T. 0.000 min
 Lab File: VV022325.D
 Acq: 24 Sep 2021 18:43

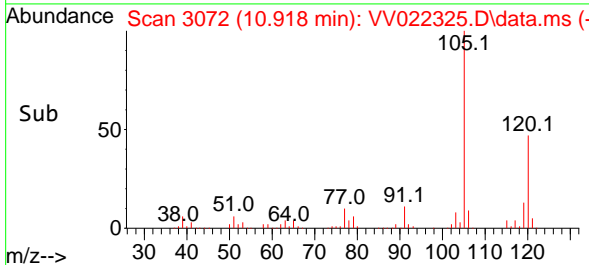
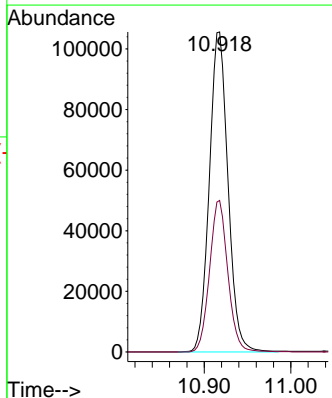
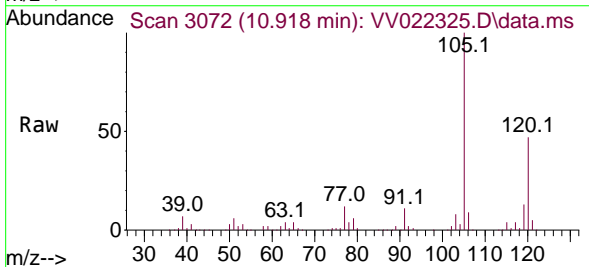
Instrument :
 MSVOA_V
 ClientSampled :

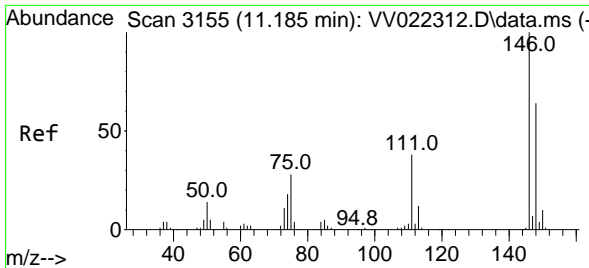
Tgt Ion:105 Resp: 153141
 Ion Ratio Lower Upper
 105 100
 120 50.0 39.6 59.4



#63
 1,2,4-Trimethylbenzene
 Concen: 4.980 ug/L
 RT: 10.918 min Scan# 3072
 Delta R.T. 0.003 min
 Lab File: VV022325.D
 Acq: 24 Sep 2021 18:43

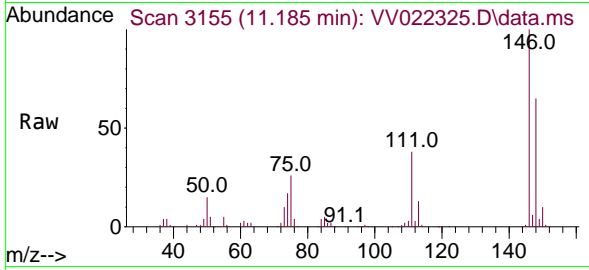
Tgt Ion:105 Resp: 158116
 Ion Ratio Lower Upper
 105 100
 120 46.3 37.0 55.6



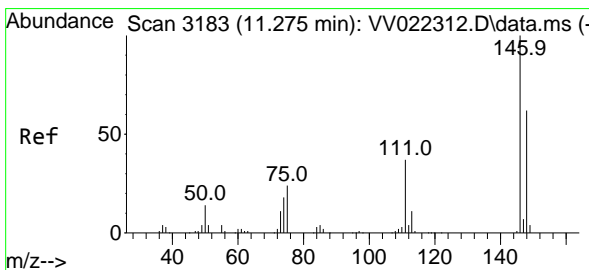
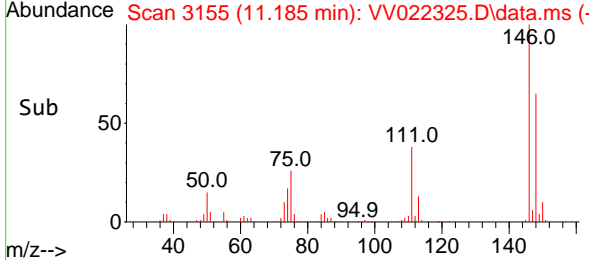
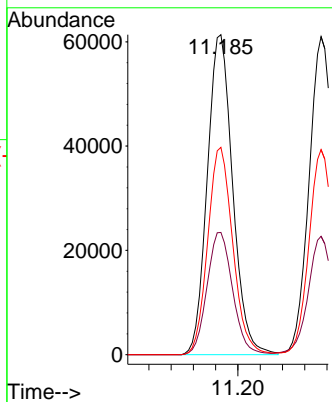


#64
 1,3-Dichlorobenzene
 Concen: 5.064 ug/L
 RT: 11.185 min Scan# 3155
 Delta R.T. 0.000 min
 Lab File: VV022325.D
 Acq: 24 Sep 2021 18:43

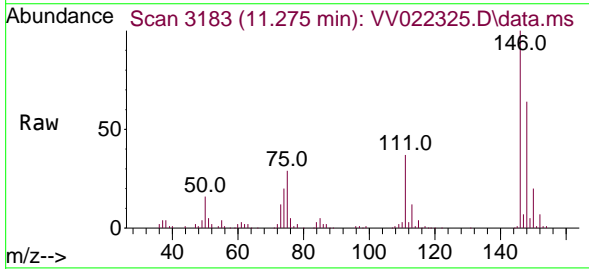
Instrument :
 MSVOA_V
 ClientSampled :



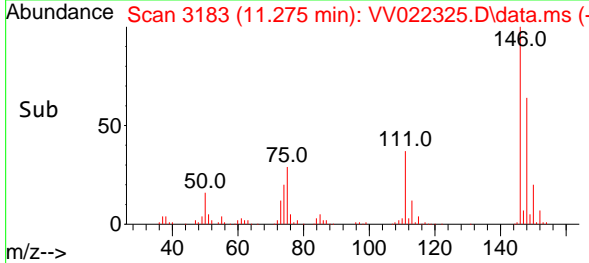
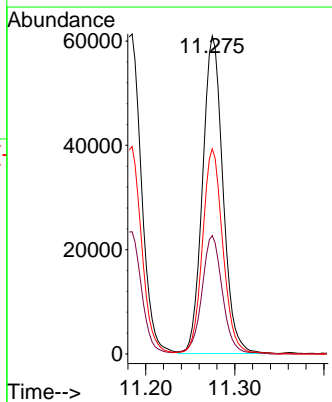
Tgt Ion:146 Resp: 97211
 Ion Ratio Lower Upper
 146 100
 111 38.2 26.7 49.5
 148 64.8 45.7 84.9

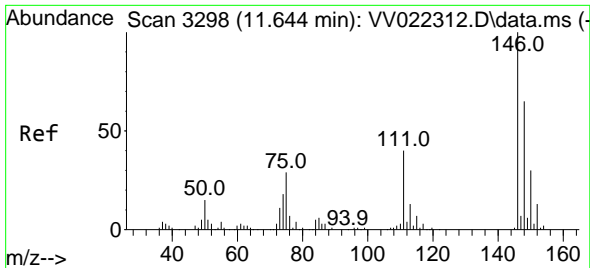


#65
 1,4-Dichlorobenzene
 Concen: 4.966 ug/L
 RT: 11.275 min Scan# 3183
 Delta R.T. 0.000 min
 Lab File: VV022325.D
 Acq: 24 Sep 2021 18:43



Tgt Ion:146 Resp: 96611
 Ion Ratio Lower Upper
 146 100
 111 37.2 25.5 47.3
 148 64.5 42.6 79.0

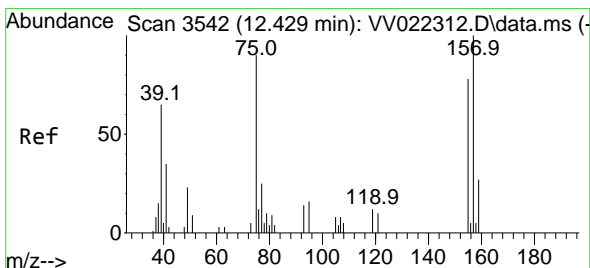
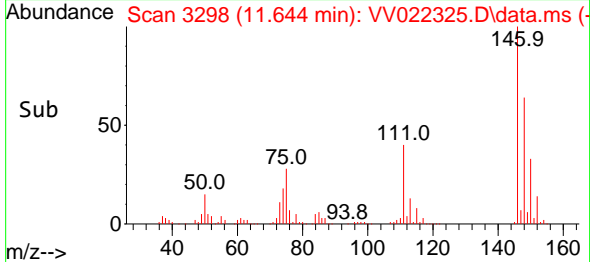
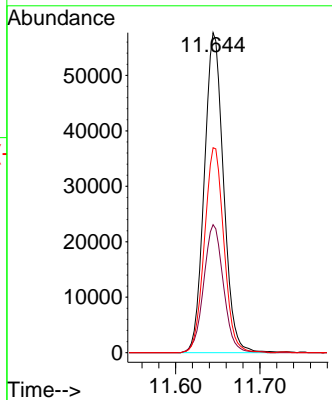
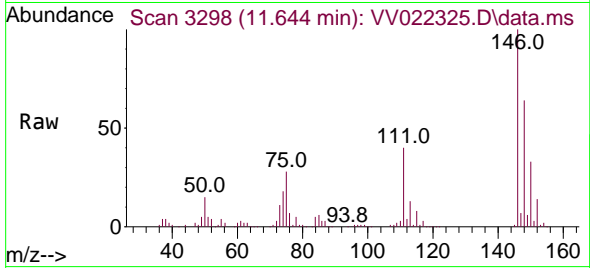




#67
 1,2-Dichlorobenzene
 Concen: 5.011 ug/L
 RT: 11.644 min Scan# 3298
 Delta R.T. 0.000 min
 Lab File: VV022325.D
 Acq: 24 Sep 2021 18:43

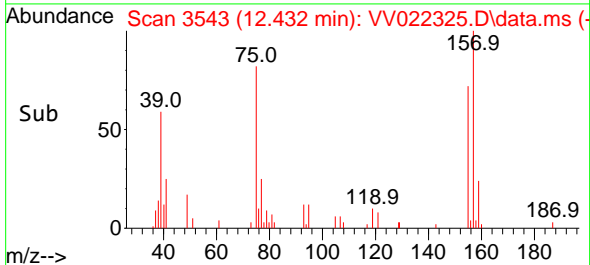
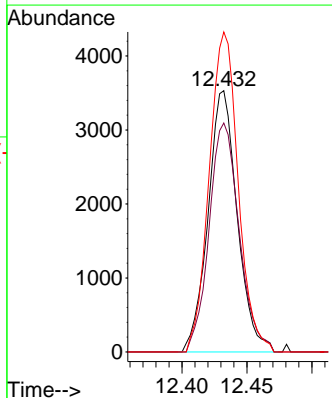
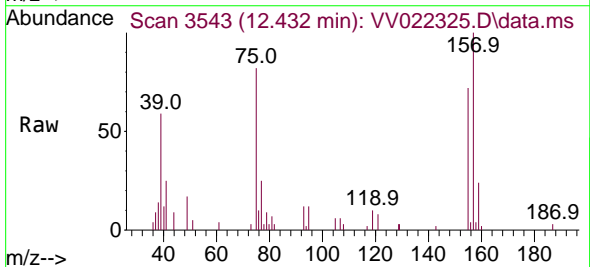
Instrument :
 MSVOA_V
 ClientSampled :

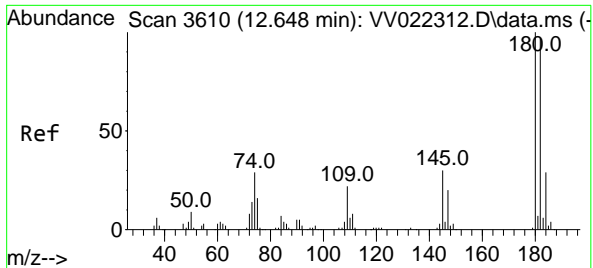
Tgt Ion	Resp	Lower	Upper
146	91701		
111	40.0	30.8	46.2
148	64.1	49.1	73.7



#68
 1,2-Dibromo-3-chloropropane
 Concen: 4.572 ug/L
 RT: 12.432 min Scan# 3543
 Delta R.T. 0.003 min
 Lab File: VV022325.D
 Acq: 24 Sep 2021 18:43

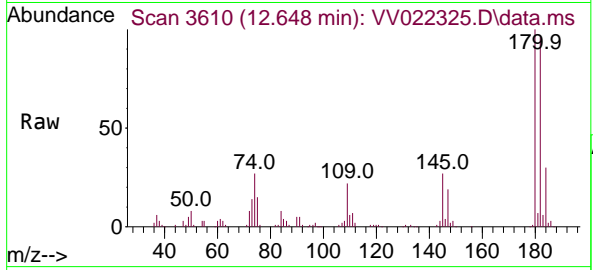
Tgt Ion	Resp	Lower	Upper
75	5518		
155	87.6	75.6	113.4
157	122.5	92.6	139.0





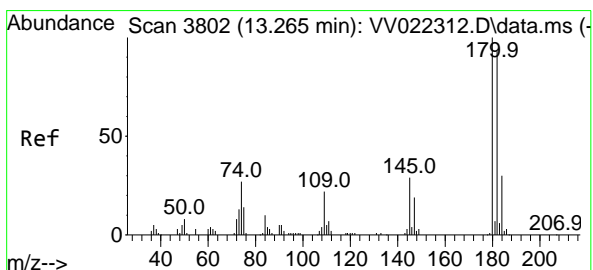
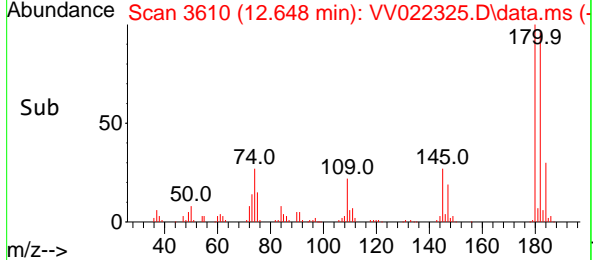
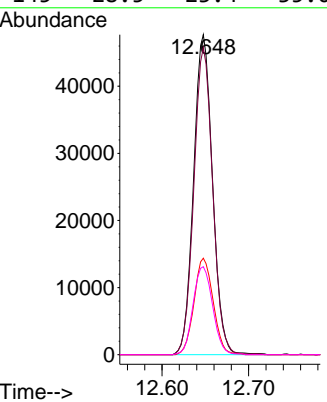
#69
 1,3,5-Trichlorobenzene
 Concen: 4.976 ug/L
 RT: 12.648 min Scan# 3610
 Delta R.T. 0.000 min
 Lab File: VV022325.D
 Acq: 24 Sep 2021 18:43

Instrument :
 MSVOA_V
 ClientSampled :

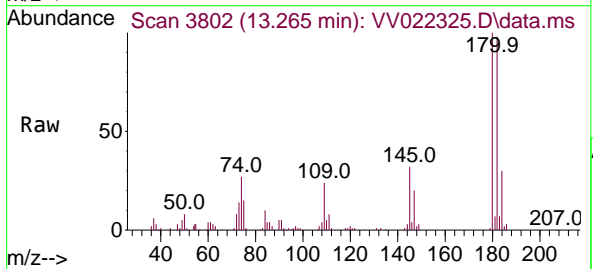


Tgt Ion:180 Resp: 72457

Ion	Ratio	Lower	Upper
180	100		
182	95.4	74.6	112.0
184	30.5	24.0	36.0
145	28.5	23.4	35.0

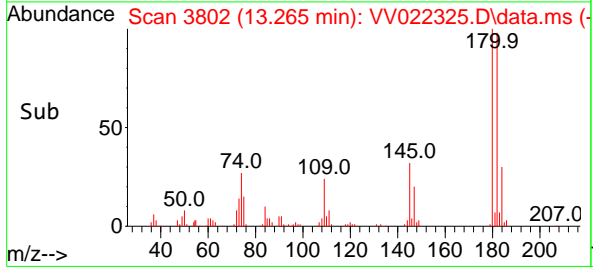
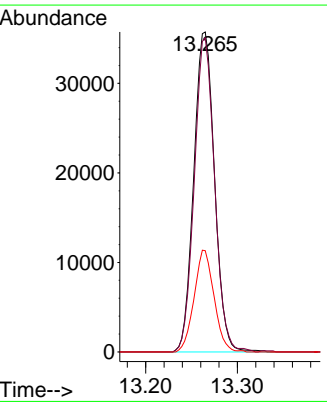


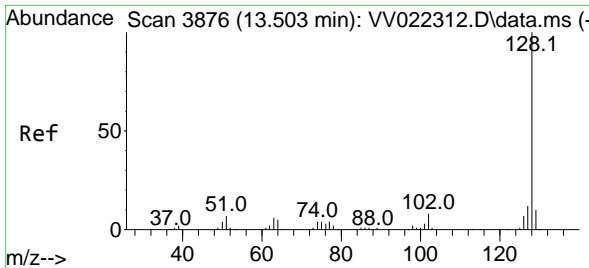
#70
 1,2,4-trichlorobenzene
 Concen: 4.846 ug/L
 RT: 13.265 min Scan# 3802
 Delta R.T. 0.000 min
 Lab File: VV022325.D
 Acq: 24 Sep 2021 18:43



Tgt Ion:180 Resp: 56219

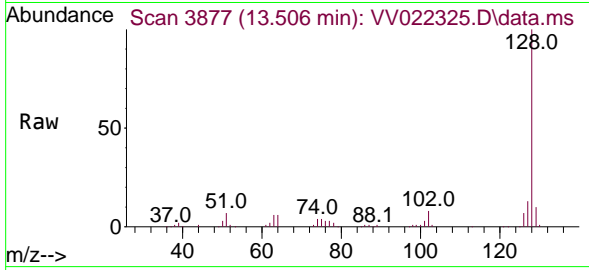
Ion	Ratio	Lower	Upper
180	100		
182	96.0	73.1	109.7
145	30.6	23.6	35.4





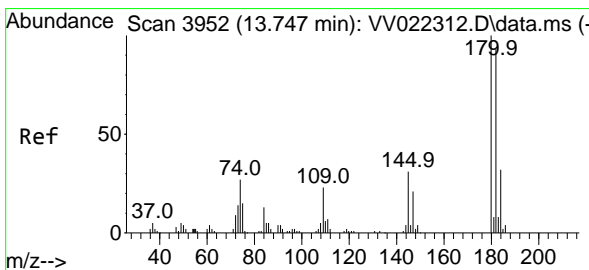
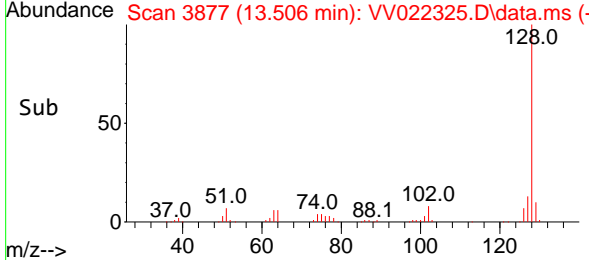
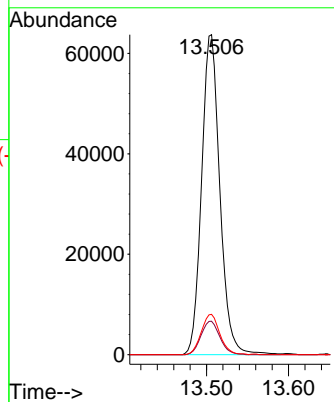
#71
 Naphthalene
 Concen: 4.667 ug/L
 RT: 13.506 min Scan# 3877
 Delta R.T. 0.003 min
 Lab File: VV022325.D
 Acq: 24 Sep 2021 18:43

Instrument :
 MSVOA_V
 ClientSampled :

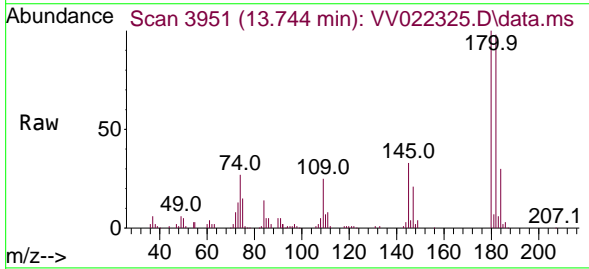


Tgt Ion:128 Resp: 98392

Ion	Ratio	Lower	Upper
128	100		
129	10.8	9.0	13.4
127	12.8	9.9	14.9



#72
 1,2,3-Trichlorobenzene
 Concen: 4.940 ug/L
 RT: 13.744 min Scan# 3951
 Delta R.T. -0.003 min
 Lab File: VV022325.D
 Acq: 24 Sep 2021 18:43



Tgt Ion:180 Resp: 53559

Ion	Ratio	Lower	Upper
180	100		
182	99.9	76.9	115.3
145	32.2	26.0	39.0

