

Data Path : Z:\voasrv\HPCHEM1\MSVOA_V\Data\VW092523\
 Data File : VW032169.D
 Acq On : 25 Sep 2023 13:26
 Operator : SY/MD
 Sample : VSTD050
 Misc : 5.0mL/MSVOA_V/WATER
 ALS Vial : 4 Sample Multiplier: 1

Instrument :
 MSVOA_V
 ClientSampleId :

Quant Time: Sep 26 01:05:29 2023
 Quant Method : Z:\voasrv\HPCHEM1\MSVOA_V\Method\SFAMVLM092523WMA.M
 Quant Title : VOC Analysis
 QLast Update : Tue Sep 26 01:03:52 2023
 Response via : Initial Calibration

Compound	R.T.	QIon	Response	Conc	Units	Dev(Min)
Internal Standards						
1) 1,4-Difluorobenzene	5.539	114	232551	50.000	ug/L	0.00
28) Chlorobenzene-d5	8.789	117	225173	50.000	ug/L	0.00
58) 1,4-Dichlorobenzene-d4	11.188	152	119912	50.000	ug/L	0.00
System Monitoring Compounds						
4) Vinyl Chloride-d3	1.278	65	72903	50.377	ug/L	0.00
7) Chloroethane-d5	1.529	69	64324	50.456	ug/L	0.00
11) 1,1-Dichloroethene-d2	2.060	65	32474	48.412	ug/L	0.00
21) 2-Butanone-d5	3.786	46	141755	119.349	ug/L	0.00
24) Chloroform-d	4.253	84	157657	49.880	ug/L	0.00
26) 1,2-Dichloroethane-d4	4.944	65	98869	47.832	ug/L	0.00
32) Benzene-d6	4.963	84	306890	50.222	ug/L	0.00
36) 1,2-Dichloropropane-d6	5.992	67	104253	52.124	ug/L	0.00
41) Toluene-d8	7.246	98	280867	49.838	ug/L	0.00
43) trans-1,3-Dichloroprop...	7.555	79	49746	49.019	ug/L	0.00
47) 2-Hexanone-d5	8.027	63	94845	141.798	ug/L	0.00
56) 1,1,2,2-Tetrachloroeth...	10.156	84	149804	56.845	ug/L	0.00
66) 1,2-Dichlorobenzene-d4	11.564	152	110593	50.464	ug/L	0.00
Target Compounds						
						Qvalue
2) Dichlorodifluoromethane	1.105	85	99241	64.753	ug/L	100
3) Chloromethane	1.217	50	106515	67.515	ug/L	100
5) Vinyl chloride	1.282	62	103417	62.921	ug/L	100
6) Bromomethane	1.481	94	64401	65.866	ug/L	100
8) Chloroethane	1.545	64	65412	60.763	ug/L	100
9) Trichlorofluoromethane	1.712	101	133315	57.398	ug/L	100
10) 1,1,2-Trichloro-1,2,2-...	2.069	101	81292	57.805	ug/L	100
12) 1,1-Dichloroethene	2.069	96	74309	58.415	ug/L	100
13) Acetone	2.111	43	114962	109.943	ug/L	100
14) Carbon disulfide	2.240	76	238666	75.626	ug/L	100
15) Methyl Acetate	2.372	43	116215	61.140	ug/L	100
16) Methylene chloride	2.449	84	94661	58.004	ug/L	100
17) trans-1,2-Dichloroethene	2.696	96	83690	59.808	ug/L	100
18) Methyl tert-butyl Ether	2.706	73	298437	52.515	ug/L	100
19) 1,1-Dichloroethane	3.114	63	169959	55.430	ug/L	100
20) cis-1,2-Dichloroethene	3.818	96	97946	56.701	ug/L	100
22) 2-Butanone	3.870	43	162696	116.842	ug/L	100
23) Bromochloromethane	4.150	128	49080	58.250	ug/L	100
25) Chloroform	4.281	83	164253	52.353	ug/L	100
27) 1,2-Dichloroethane	5.043	62	128093	52.054	ug/L	100
29) Cyclohexane	4.587	56	156678	62.786	ug/L	100
30) 1,1,1-Trichloroethane	4.516	97	139592	52.794	ug/L	100
31) Carbon tetrachloride	4.738	117	120172	53.216	ug/L	100
33) Benzene	5.015	78	367366	58.375	ug/L	100
34) Trichloroethene	5.834	95	96732	51.873	ug/L	100
35) Methylcyclohexane	6.053	83	156387	60.480	ug/L	100
37) 1,2-Dichloropropane	6.095	63	95427	54.914	ug/L	100
38) Bromodichloromethane	6.436	83	126791	51.889	ug/L	100
39) cis-1,3-Dichloropropene	6.957	75	161646	53.710	ug/L	100
40) 4-Methyl-2-pentanone	7.159	43	313389	112.726	ug/L	100
42) Toluene	7.317	91	386840	56.518	ug/L	100
44) trans-1,3-Dichloropropene	7.584	75	148036	51.557	ug/L	100

Data Path : Z:\voasrv\HPCHEM1\MSVOA_V\Data\VW092523\
 Data File : VW032169.D
 Acq On : 25 Sep 2023 13:26
 Operator : SY/MD
 Sample : VSTD050
 Misc : 5.0mL/MSVOA_V/WATER
 ALS Vial : 4 Sample Multiplier: 1

Instrument :
 MSVOA_V
 ClientSampleId :

Quant Time: Sep 26 01:05:29 2023
 Quant Method : Z:\voasrv\HPCHEM1\MSVOA_V\Method\SFAMVLM092523WMA.M
 Quant Title : VOC Analysis
 QLast Update : Tue Sep 26 01:03:52 2023
 Response via : Initial Calibration

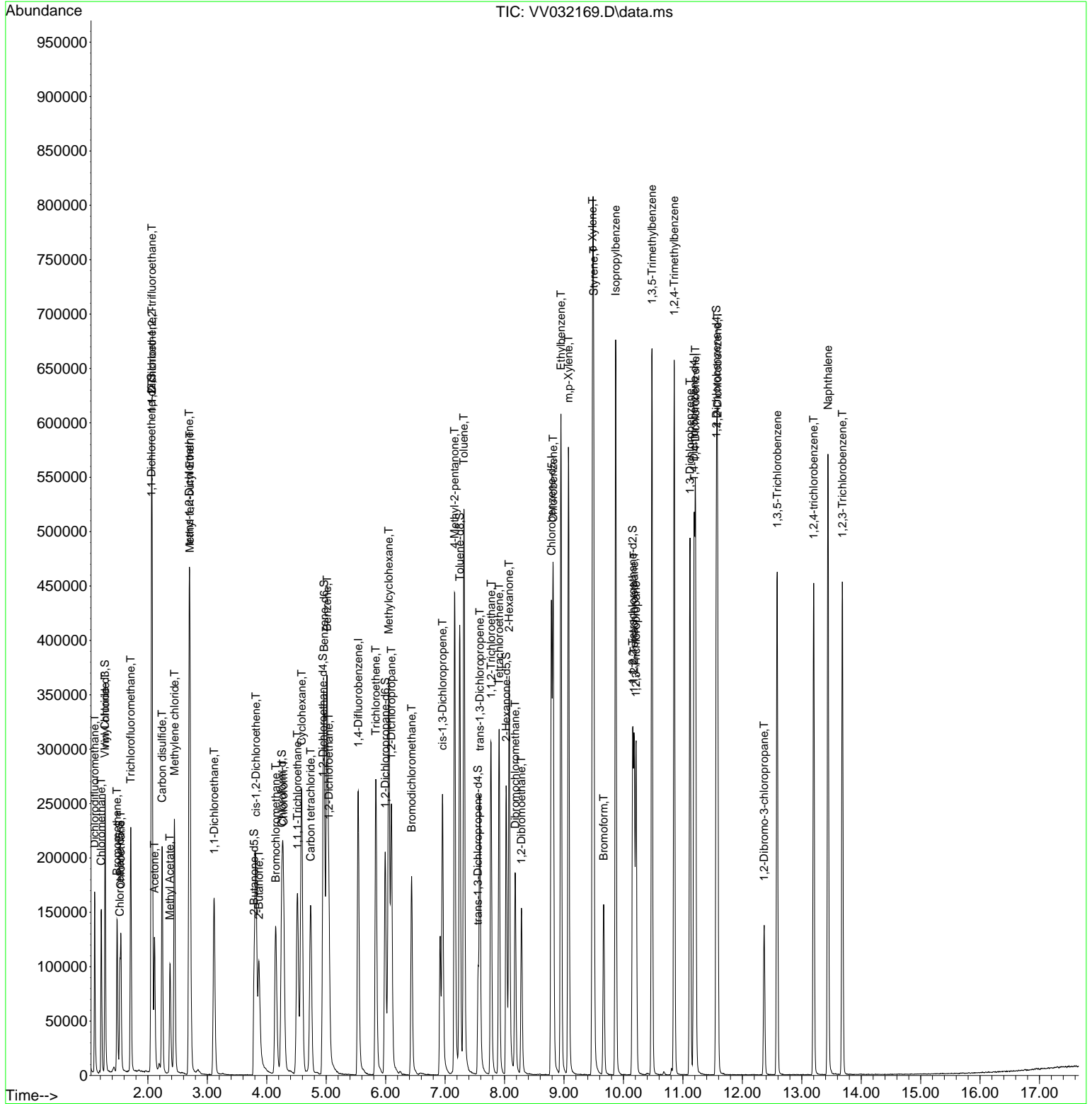
Compound	R.T.	QIon	Response	Conc	Units	Dev(Min)
45) 1,1,2-Trichloroethane	7.773	97	97029	54.801	ug/L	100
46) Tetrachloroethene	7.908	164	70986	58.749	ug/L	100
48) 2-Hexanone	8.079	43	239812	113.059	ug/L	100
49) Dibromochloromethane	8.178	129	96100	53.368	ug/L	100
50) 1,2-Dibromoethane	8.284	107	104112	55.900	ug/L	100
51) Chlorobenzene	8.818	112	247390	54.742	ug/L	100
52) Ethylbenzene	8.950	91	431466	53.859	ug/L	100
53) m,p-Xylene	9.075	106	159379	53.705	ug/L	100
54) o-Xylene	9.481	106	158443	53.779	ug/L	100
55) Styrene	9.500	104	270810	52.234	ug/L	100
57) 1,1,2,2-Tetrachloroethane	10.182	83	151778	58.976	ug/L	100
59) Bromoform	9.667	173	69294	54.766	ug/L	100
60) Isopropylbenzene	9.870	105	423077	52.328	ug/L	100
61) 1,2,3-Trichloropropane	10.214	75	122162	53.223	ug/L	100
62) 1,3,5-Trimethylbenzene	10.481	105	348046	51.325	ug/L	100
63) 1,2,4-Trimethylbenzene	10.854	105	342440	50.400	ug/L	100
64) 1,3-Dichlorobenzene	11.120	146	193293	52.986	ug/L	100
65) 1,4-Dichlorobenzene	11.214	146	193634	52.282	ug/L	100
67) 1,2-Dichlorobenzene	11.583	146	193175	53.303	ug/L	100
68) 1,2-Dibromo-3-chloropr...	12.368	75	32988	49.056	ug/L	100
69) 1,3,5-Trichlorobenzene	12.587	180	136796	51.769	ug/L	100
70) 1,2,4-trichlorobenzene	13.201	180	130685	51.700	ug/L	100
71) Naphthalene	13.442	128	429374	52.946	ug/L	100
72) 1,2,3-Trichlorobenzene	13.683	180	131009	53.534	ug/L	100

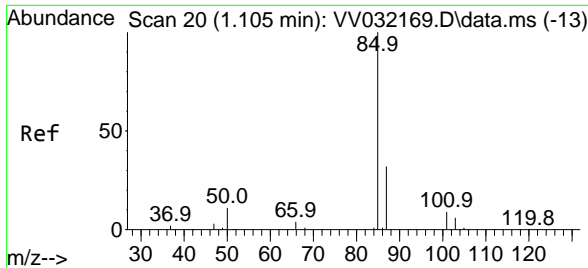
(#) = qualifier out of range (m) = manual integration (+) = signals summed

Data Path : Z:\voasrv\HPCHEM1\MSVOA_V\Data\VV092523\
 Data File : VV032169.D
 Acq On : 25 Sep 2023 13:26
 Operator : SY/MD
 Sample : VSTD050
 Misc : 5.0mL/MSVOA_V/WATER
 ALS Vial : 4 Sample Multiplier: 1

Instrument :
 MSVOA_V
 ClientSampleId :

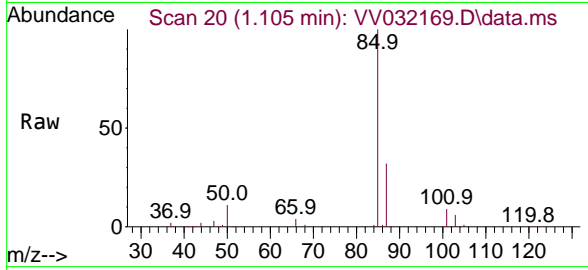
Quant Time: Sep 26 01:05:29 2023
 Quant Method : Z:\voasrv\HPCHEM1\MSVOA_V\Method\SFAMVLM092523WMA.M
 Quant Title : VOC Analysis
 QLast Update : Tue Sep 26 01:03:52 2023
 Response via : Initial Calibration



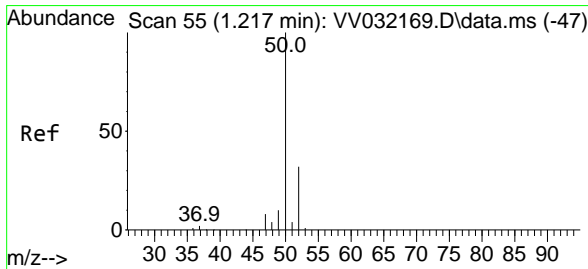
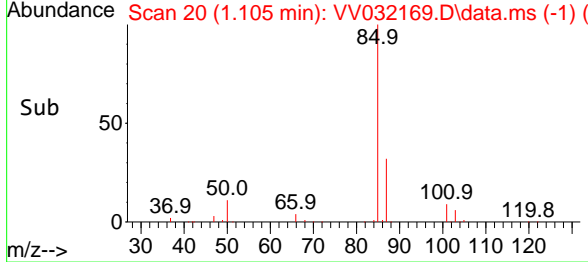
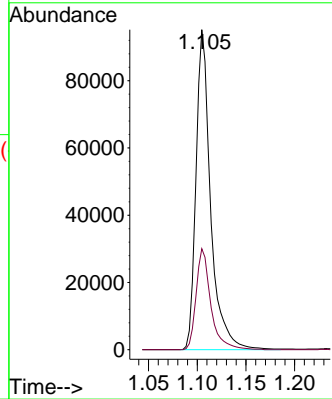


#2
 Dichlorodifluoromethane
 Concen: 64.753 ug/L
 RT: 1.105 min Scan# 20
 Delta R.T. 0.000 min
 Lab File: VV032169.D
 Acq: 25 Sep 2023 13:26

Instrument :
 MSVOA_V
 ClientSampleId :

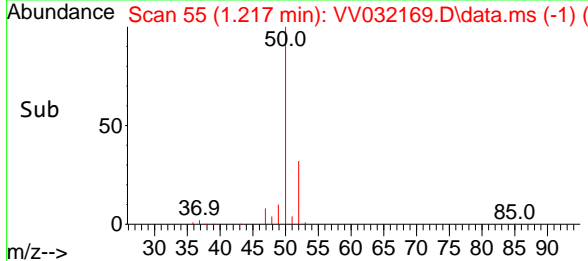
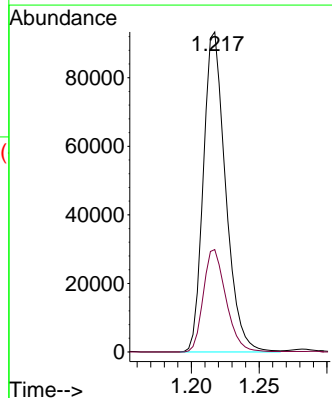
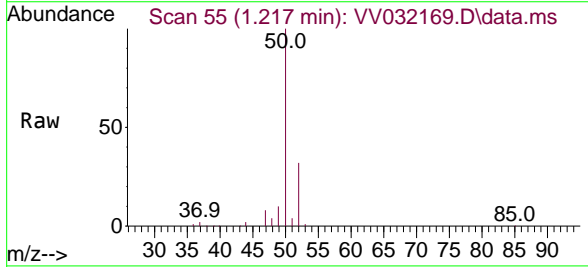


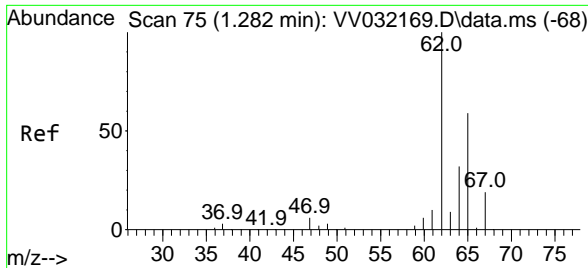
Tgt Ion: 85 Resp: 99241
 Ion Ratio Lower Upper
 85 100
 87 31.7 25.4 38.0



#3
 Chloromethane
 Concen: 67.515 ug/L
 RT: 1.217 min Scan# 55
 Delta R.T. 0.000 min
 Lab File: VV032169.D
 Acq: 25 Sep 2023 13:26

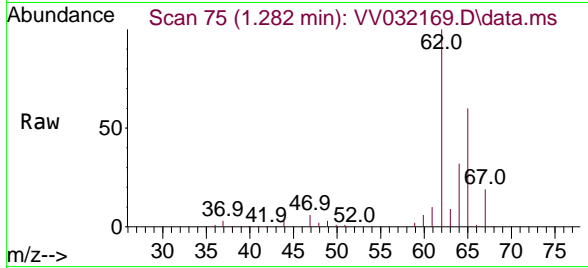
Tgt Ion: 50 Resp: 106515
 Ion Ratio Lower Upper
 50 100
 52 32.0 22.4 41.6



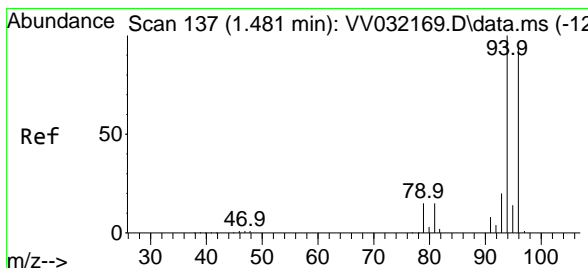
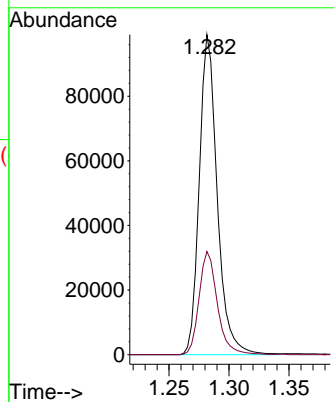
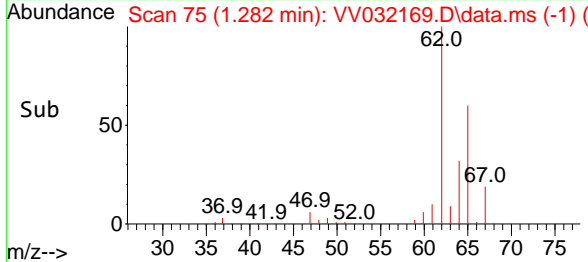


#5
 Vinyl chloride
 Concen: 62.921 ug/L
 RT: 1.282 min Scan# 71
 Delta R.T. 0.000 min
 Lab File: VV032169.D
 Acq: 25 Sep 2023 13:26

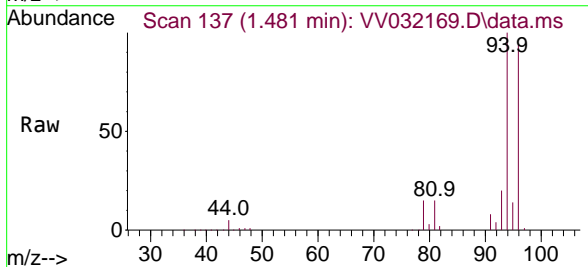
Instrument :
 MSVOA_V
 ClientSampleId :



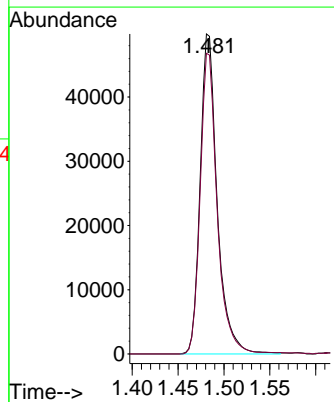
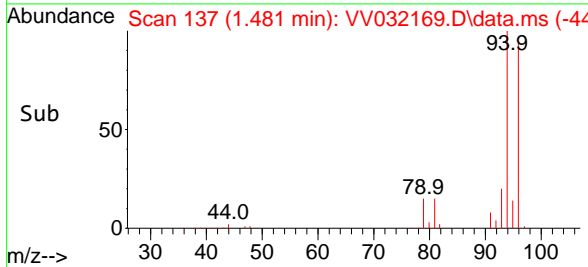
Tgt Ion: 62 Resp: 103417
 Ion Ratio Lower Upper
 62 100
 64 32.2 22.5 41.9

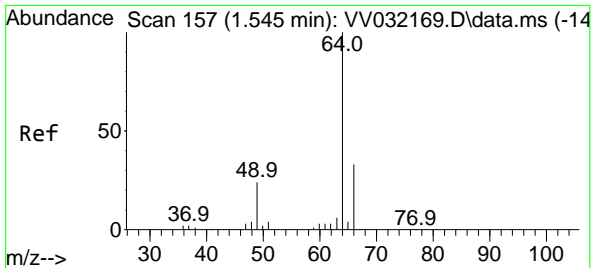


#6
 Bromomethane
 Concen: 65.866 ug/L
 RT: 1.481 min Scan# 137
 Delta R.T. 0.000 min
 Lab File: VV032169.D
 Acq: 25 Sep 2023 13:26



Tgt Ion: 94 Resp: 64401
 Ion Ratio Lower Upper
 94 100
 96 93.9 65.7 122.1

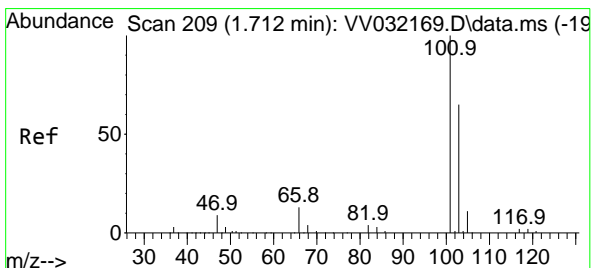
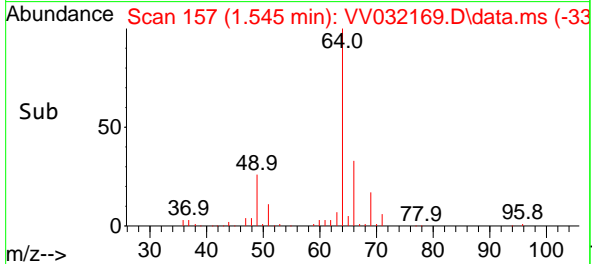
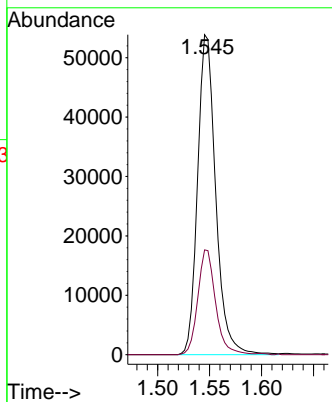
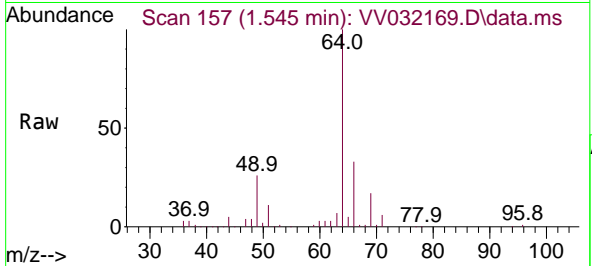




#8
 Chloroethane
 Concen: 60.763 ug/L
 RT: 1.545 min Scan# 11
 Delta R.T. 0.000 min
 Lab File: VV032169.D
 Acq: 25 Sep 2023 13:26

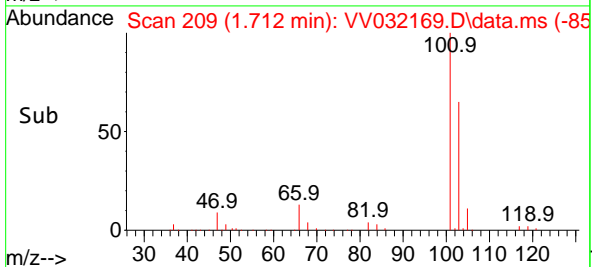
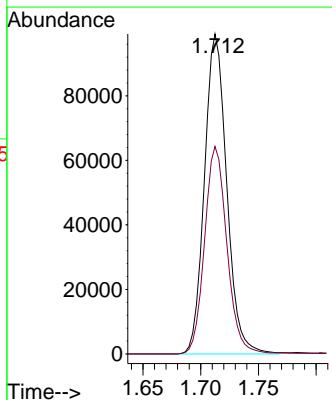
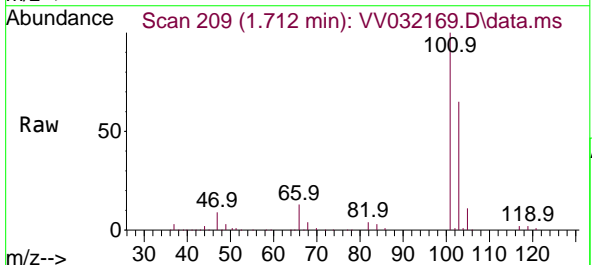
Instrument :
 MSVOA_V
 ClientSampleId :

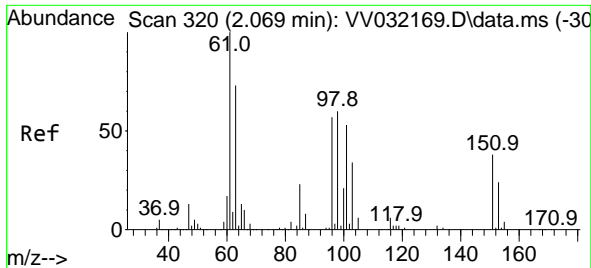
Tgt Ion: 64 Resp: 65412
 Ion Ratio Lower Upper
 64 100
 66 32.8 23.0 42.6



#9
 Trichlorofluoromethane
 Concen: 57.398 ug/L
 RT: 1.712 min Scan# 209
 Delta R.T. 0.000 min
 Lab File: VV032169.D
 Acq: 25 Sep 2023 13:26

Tgt Ion: 101 Resp: 133315
 Ion Ratio Lower Upper
 101 100
 103 65.1 52.1 78.1

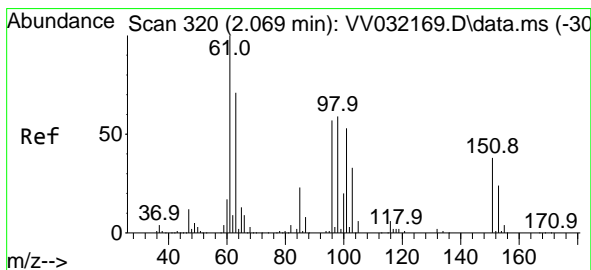
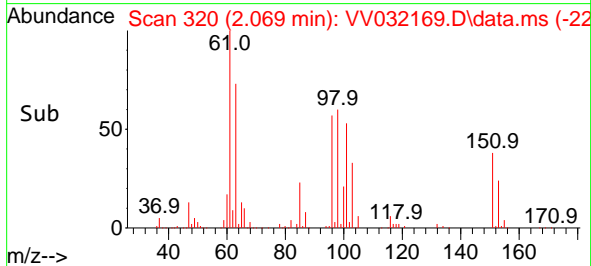
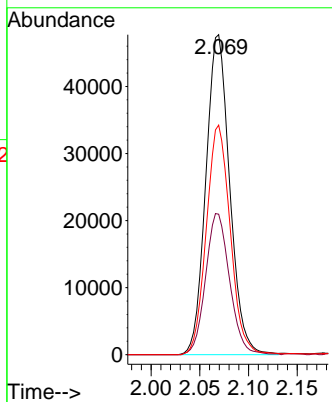
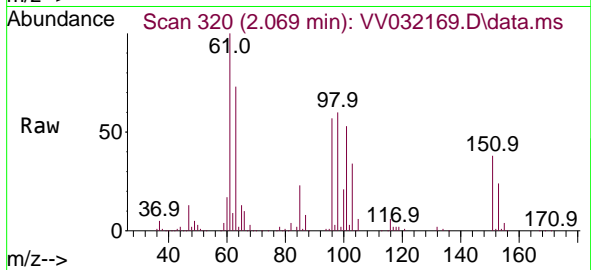




#10
 1,1,2-Trichloro-1,2,2-trifluoroethane
 Concen: 57.805 ug/L
 RT: 2.069 min Scan# 31
 Delta R.T. 0.000 min
 Lab File: VV032169.D
 Acq: 25 Sep 2023 13:26

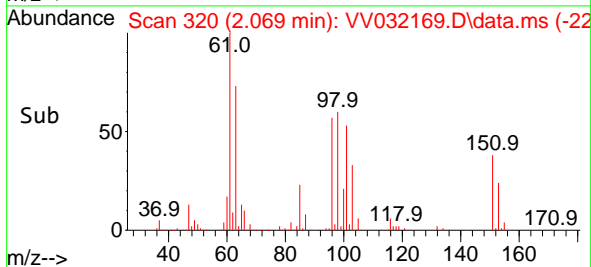
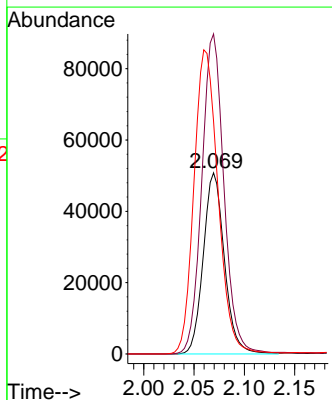
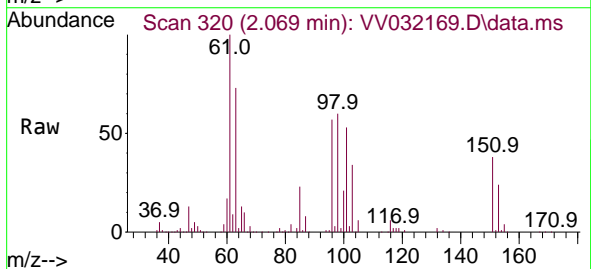
Instrument :
 MSVOA_V
 ClientSampleId :

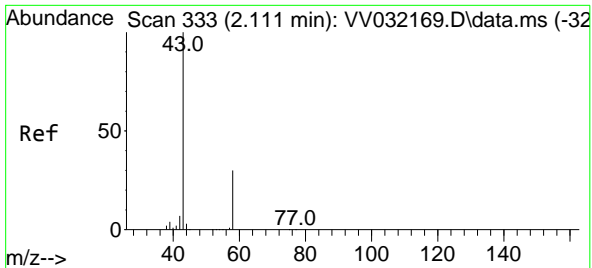
Tgt Ion:101 Resp: 81292
 Ion Ratio Lower Upper
 101 100
 85 44.3 35.4 53.2
 151 72.0 57.6 86.4



#12
 1,1-Dichloroethene
 Concen: 58.415 ug/L
 RT: 2.069 min Scan# 320
 Delta R.T. 0.000 min
 Lab File: VV032169.D
 Acq: 25 Sep 2023 13:26

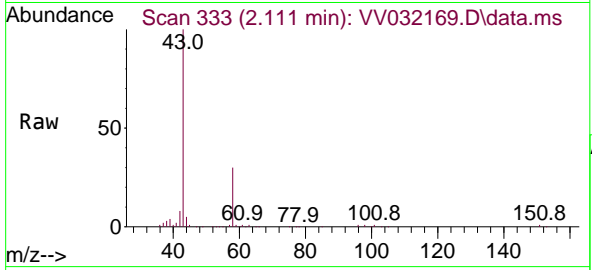
Tgt Ion: 96 Resp: 74309
 Ion Ratio Lower Upper
 96 100
 61 176.7 123.7 229.7
 63 128.5 89.9 167.0



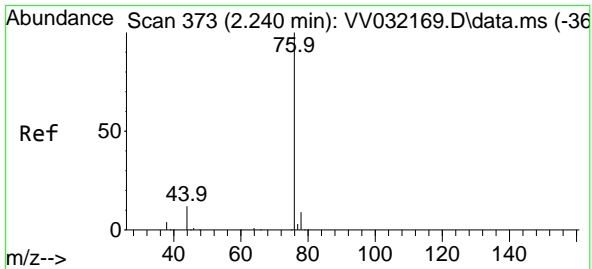
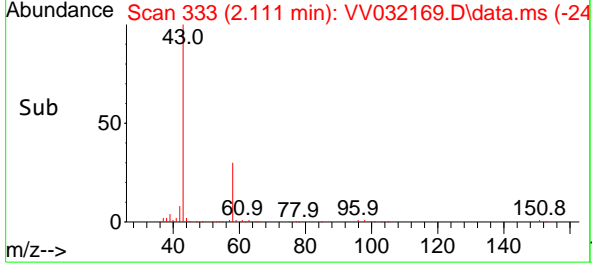
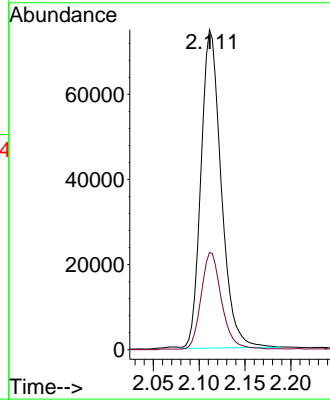


#13
 Acetone
 Concen: 109.943 ug/L
 RT: 2.111 min Scan# 311
 Delta R.T. 0.000 min
 Lab File: VV032169.D
 Acq: 25 Sep 2023 13:26

Instrument :
 MSVOA_V
 ClientSampleId :

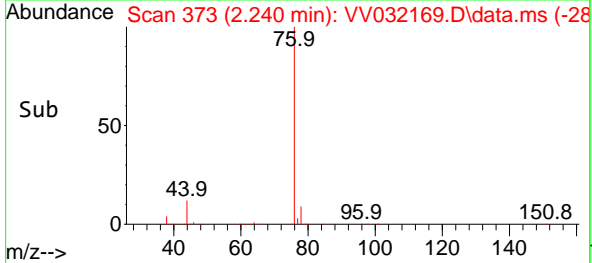
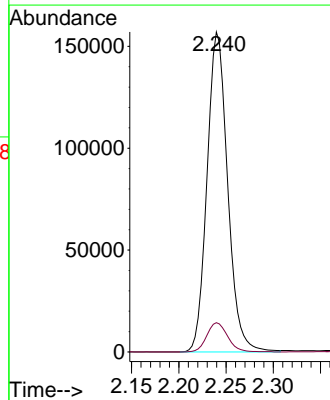
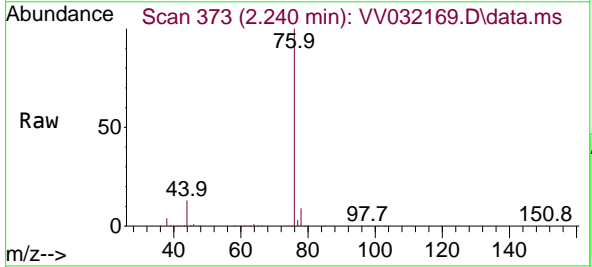


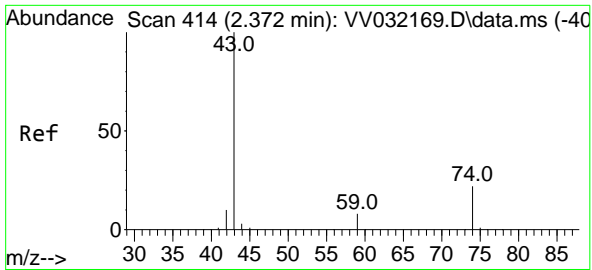
Tgt Ion: 43 Resp: 114962
 Ion Ratio Lower Upper
 43 100
 58 30.7 0.0 61.4



#14
 Carbon disulfide
 Concen: 75.626 ug/L
 RT: 2.240 min Scan# 373
 Delta R.T. 0.000 min
 Lab File: VV032169.D
 Acq: 25 Sep 2023 13:26

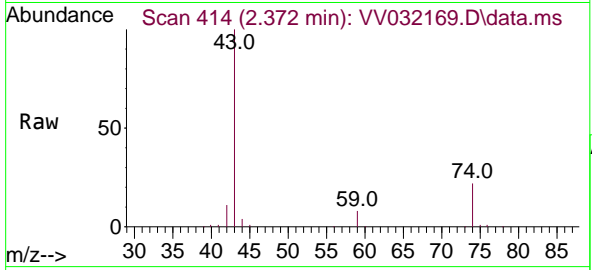
Tgt Ion: 76 Resp: 238666
 Ion Ratio Lower Upper
 76 100
 78 9.1 7.3 10.9



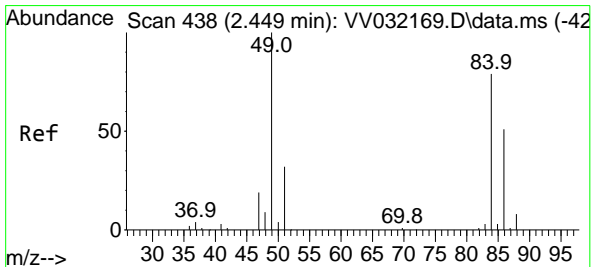
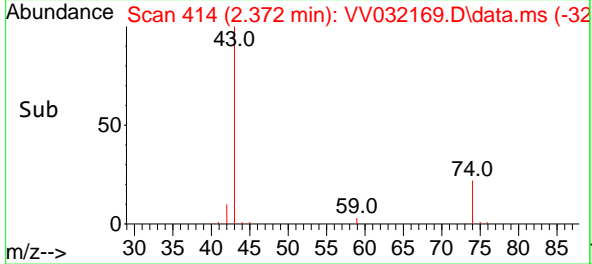
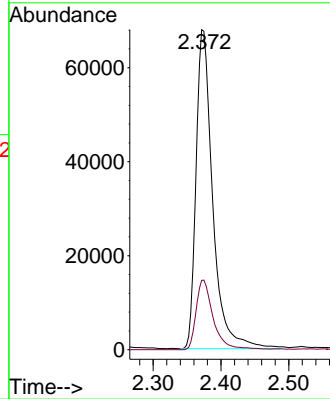


#15
 Methyl Acetate
 Concen: 61.140 ug/L
 RT: 2.372 min Scan# 411
 Delta R.T. 0.000 min
 Lab File: VV032169.D
 Acq: 25 Sep 2023 13:26

Instrument :
 MSVOA_V
 ClientSampleId :

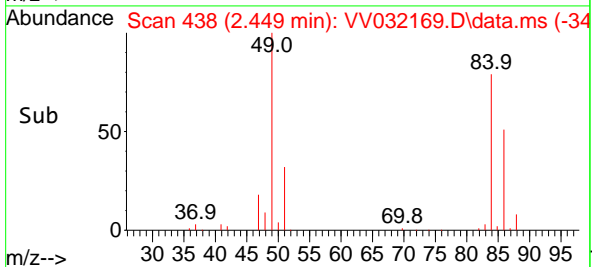
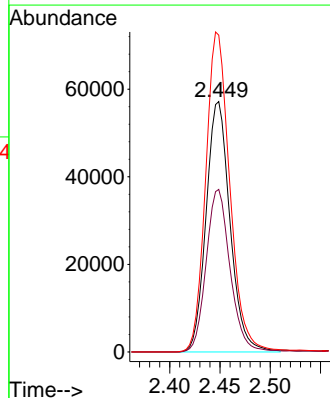
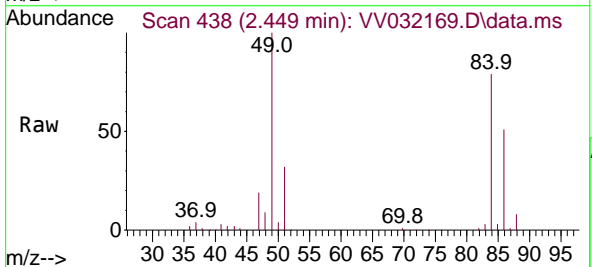


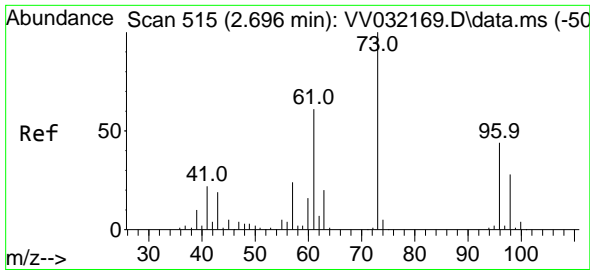
Tgt Ion: 43 Resp: 116215
 Ion Ratio Lower Upper
 43 100
 74 22.3 17.8 26.8



#16
 Methylene chloride
 Concen: 58.004 ug/L
 RT: 2.449 min Scan# 438
 Delta R.T. 0.000 min
 Lab File: VV032169.D
 Acq: 25 Sep 2023 13:26

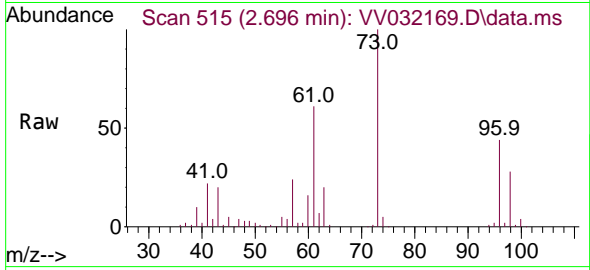
Tgt Ion: 84 Resp: 94661
 Ion Ratio Lower Upper
 84 100
 86 64.9 45.4 84.4
 49 126.5 88.5 164.4



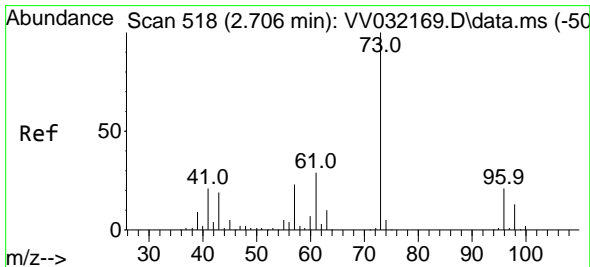
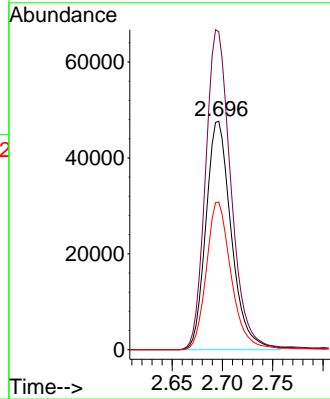
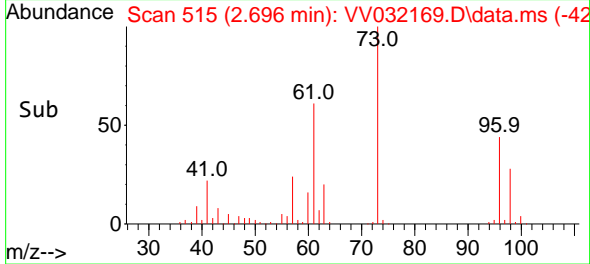


#17
 trans-1,2-Dichloroethene
 Concen: 59.808 ug/L
 RT: 2.696 min Scan# 515
 Delta R.T. 0.000 min
 Lab File: VV032169.D
 Acq: 25 Sep 2023 13:26

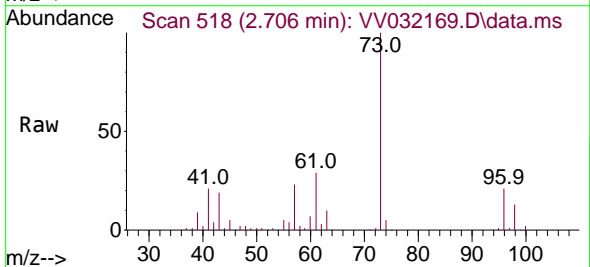
Instrument :
 MSVOA_V
 ClientSampleId :



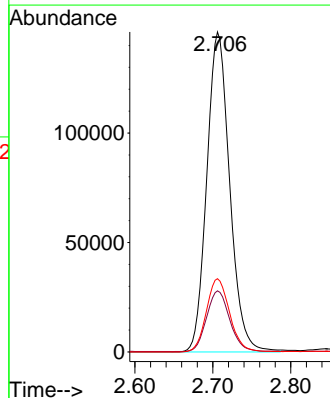
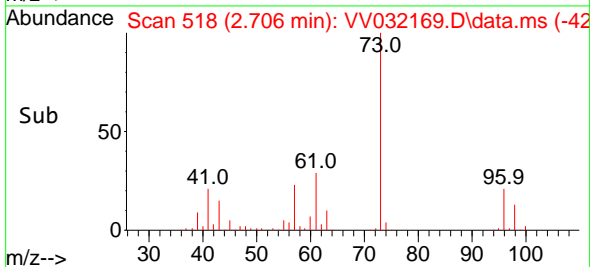
Tgt Ion: 96 Resp: 83690
 Ion Ratio Lower Upper
 96 100
 61 139.1 97.4 180.8
 98 64.6 45.2 84.0

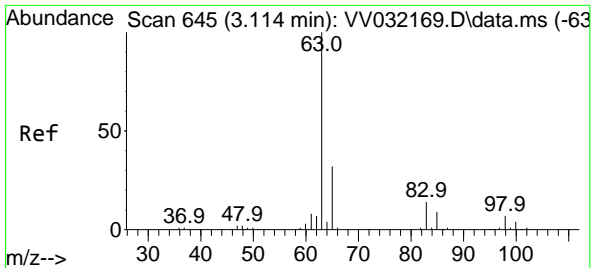


#18
 Methyl tert-butyl Ether
 Concen: 52.515 ug/L
 RT: 2.706 min Scan# 518
 Delta R.T. 0.000 min
 Lab File: VV032169.D
 Acq: 25 Sep 2023 13:26



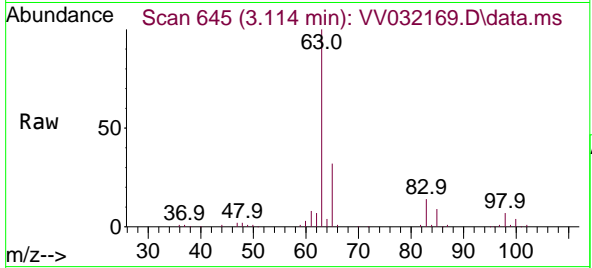
Tgt Ion: 73 Resp: 298437
 Ion Ratio Lower Upper
 73 100
 43 19.1 15.3 22.9
 57 23.3 18.6 28.0





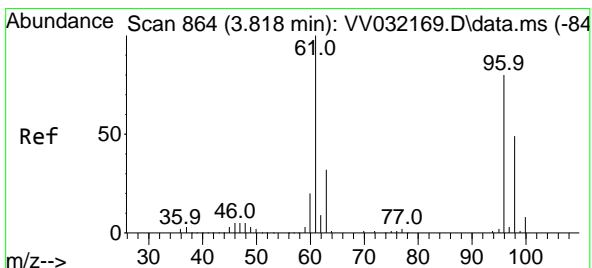
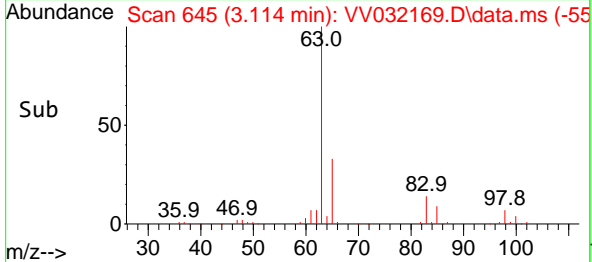
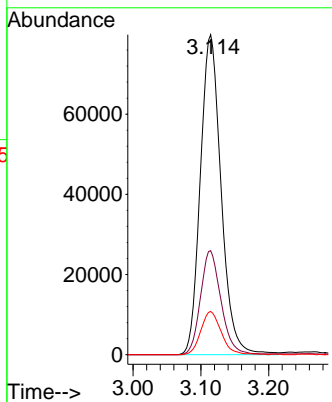
#19
 1,1-Dichloroethane
 Concen: 55.430 ug/L
 RT: 3.114 min Scan# 645
 Delta R.T. 0.000 min
 Lab File: VV032169.D
 Acq: 25 Sep 2023 13:26

Instrument : MSVOA_V
 ClientSampleId :



Tgt Ion: 63 Resp: 169959

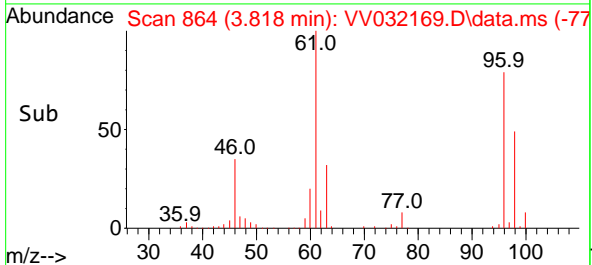
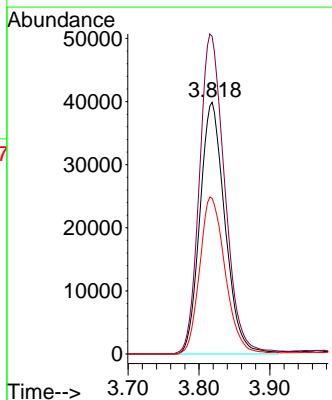
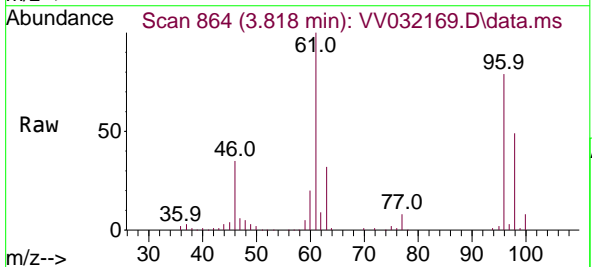
Ion	Ratio	Lower	Upper
63	100		
65	32.5	22.7	42.3
83	13.5	9.4	17.6

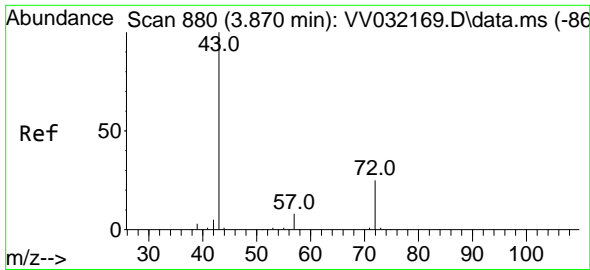


#20
 cis-1,2-Dichloroethene
 Concen: 56.701 ug/L
 RT: 3.818 min Scan# 864
 Delta R.T. 0.000 min
 Lab File: VV032169.D
 Acq: 25 Sep 2023 13:26

Tgt Ion: 96 Resp: 97946

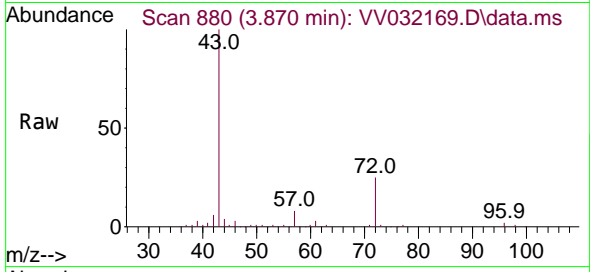
Ion	Ratio	Lower	Upper
96	100		
61	126.2	88.3	164.1
98	61.8	43.3	80.3



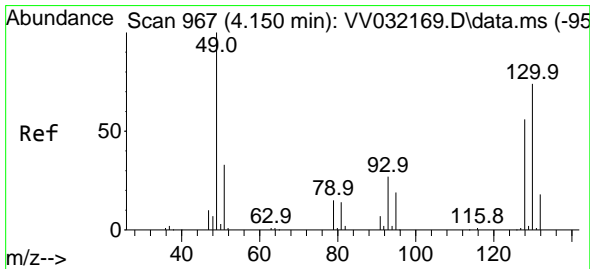
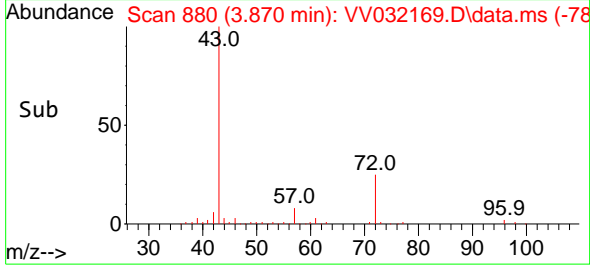
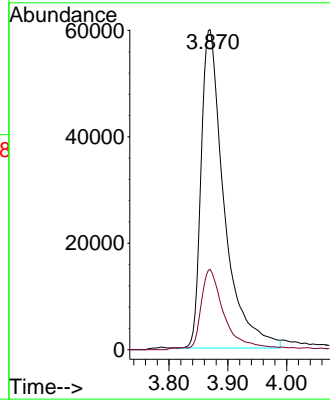


#22
 2-Butanone
 Concen: 116.842 ug/L
 RT: 3.870 min Scan# 880
 Delta R.T. 0.000 min
 Lab File: VV032169.D
 Acq: 25 Sep 2023 13:26

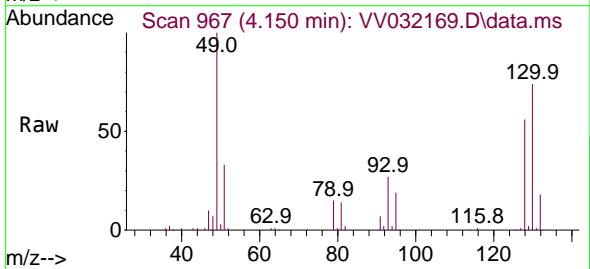
Instrument :
 MSVOA_V
 ClientSampleId :



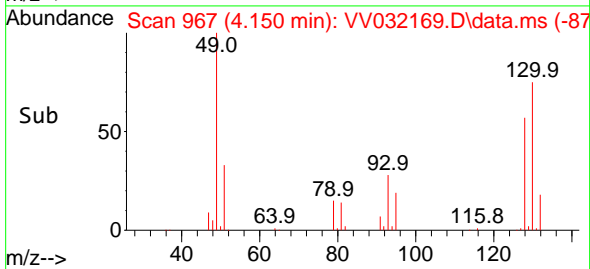
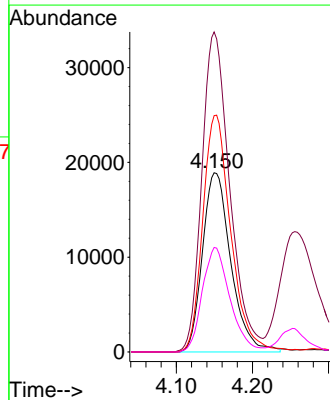
Tgt Ion: 43 Resp: 162696
 Ion Ratio Lower Upper
 43 100
 72 24.0 12.0 36.0

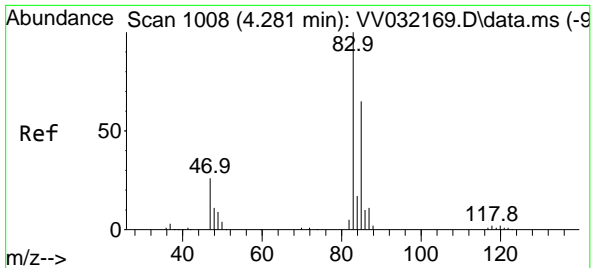


#23
 Bromochloromethane
 Concen: 58.250 ug/L
 RT: 4.150 min Scan# 967
 Delta R.T. 0.000 min
 Lab File: VV032169.D
 Acq: 25 Sep 2023 13:26



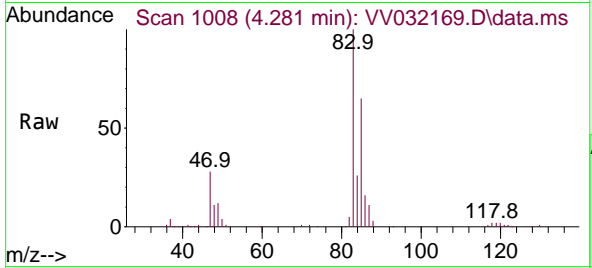
Tgt Ion: 128 Resp: 49080
 Ion Ratio Lower Upper
 128 100
 49 178.6 125.0 232.2
 130 131.9 92.3 171.5
 51 58.3 46.6 70.0



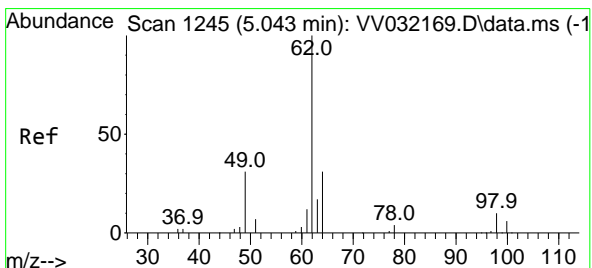
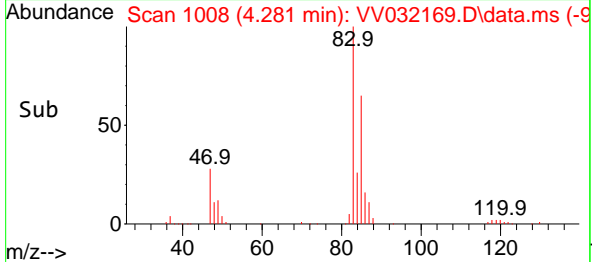
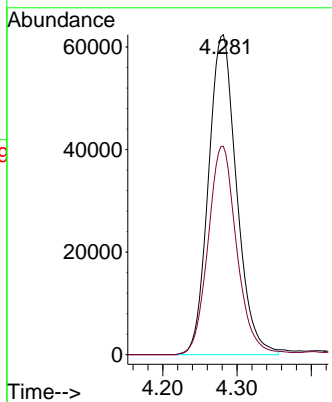


#25
 Chloroform
 Concen: 52.353 ug/L
 RT: 4.281 min Scan# 1008
 Delta R.T. 0.000 min
 Lab File: VV032169.D
 Acq: 25 Sep 2023 13:26

Instrument : MSVOA_V
 ClientSampleId :

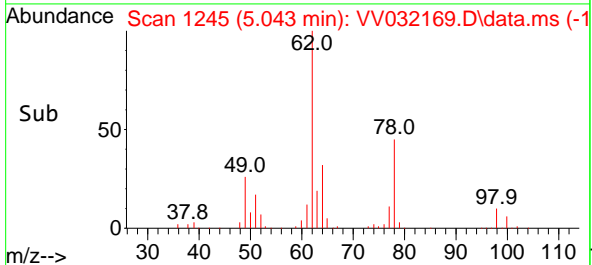
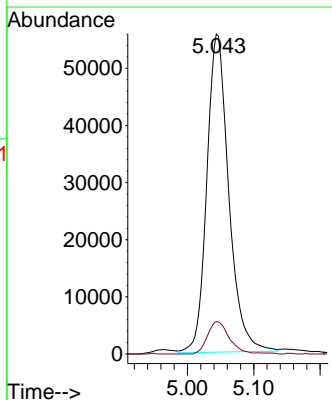
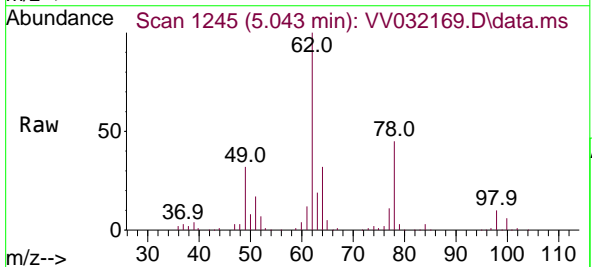


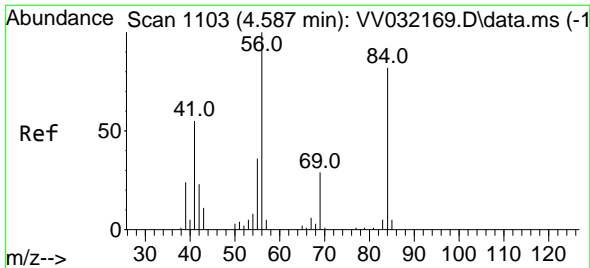
Tgt Ion: 83 Resp: 164253
 Ion Ratio Lower Upper
 83 100
 85 65.1 45.6 84.6



#27
 1,2-Dichloroethane
 Concen: 52.054 ug/L
 RT: 5.043 min Scan# 1245
 Delta R.T. 0.000 min
 Lab File: VV032169.D
 Acq: 25 Sep 2023 13:26

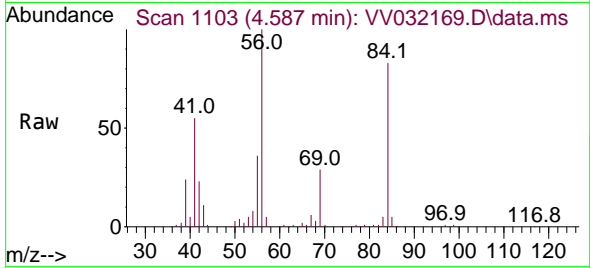
Tgt Ion: 62 Resp: 128093
 Ion Ratio Lower Upper
 62 100
 98 10.1 8.1 12.1





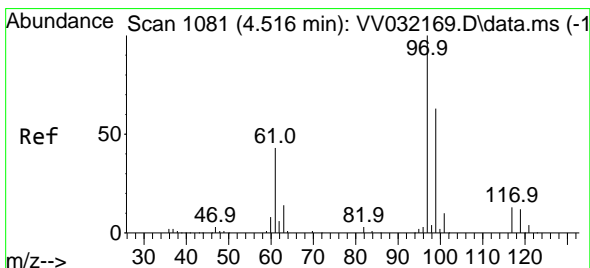
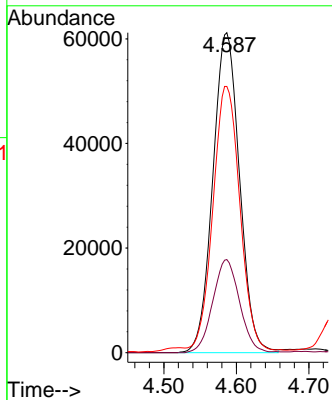
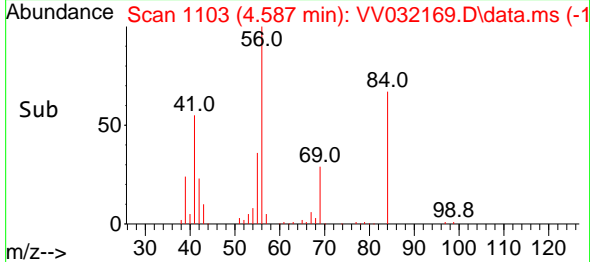
#29
 Cyclohexane
 Concen: 62.786 ug/L
 RT: 4.587 min Scan# 1103
 Delta R.T. 0.000 min
 Lab File: VV032169.D
 Acq: 25 Sep 2023 13:26

Instrument : MSVOA_V
 ClientSampleId :

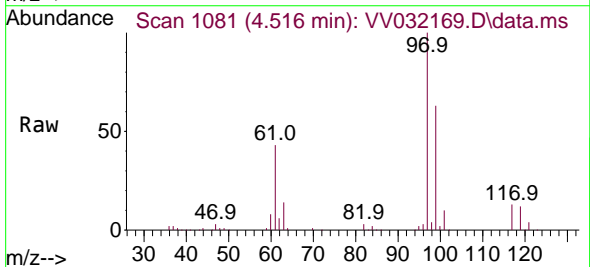


Tgt Ion: 56 Resp: 156678

Ion	Ratio	Lower	Upper
56	100		
69	29.1	23.3	34.9
84	82.7	66.2	99.2

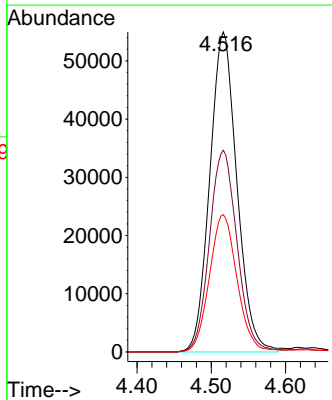
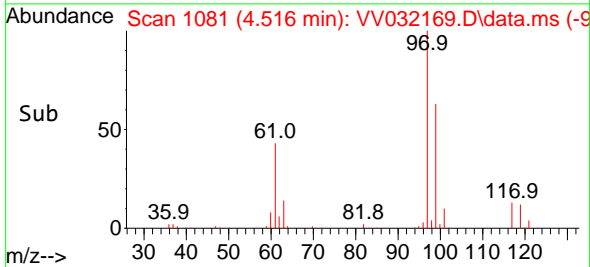


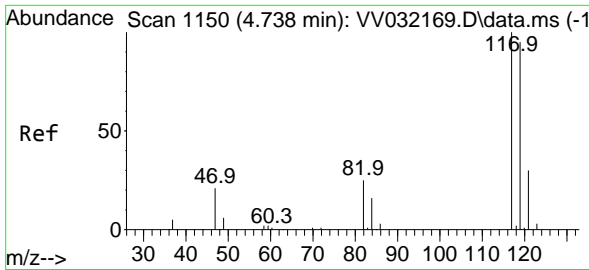
#30
 1,1,1-Trichloroethane
 Concen: 52.794 ug/L
 RT: 4.516 min Scan# 1081
 Delta R.T. 0.000 min
 Lab File: VV032169.D
 Acq: 25 Sep 2023 13:26



Tgt Ion: 97 Resp: 139592

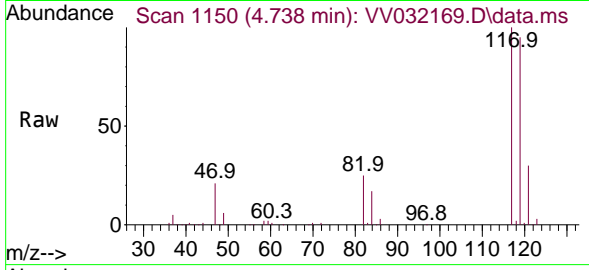
Ion	Ratio	Lower	Upper
97	100		
99	64.1	51.3	76.9
61	43.8	35.0	52.6



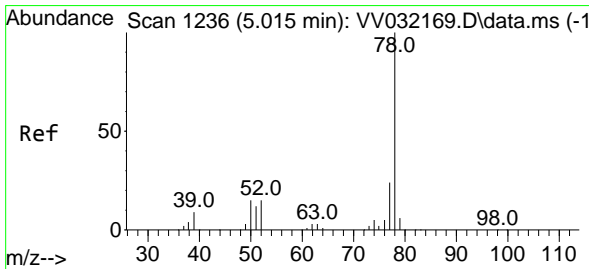
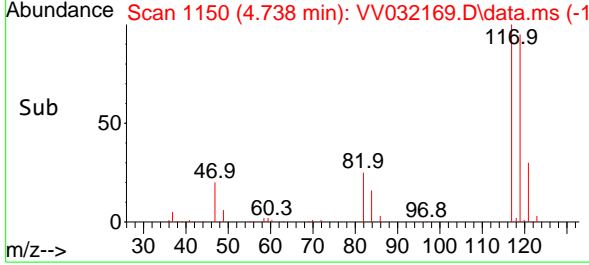
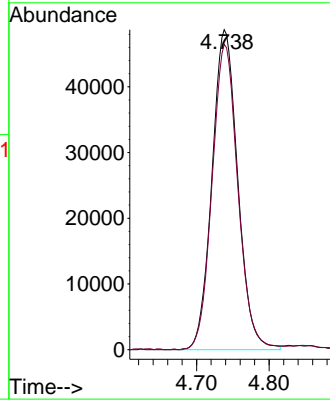


#31
 Carbon tetrachloride
 Concen: 53.216 ug/L
 RT: 4.738 min Scan# 1150
 Delta R.T. 0.000 min
 Lab File: VV032169.D
 Acq: 25 Sep 2023 13:26

Instrument :
 MSVOA_V
 ClientSampleId :

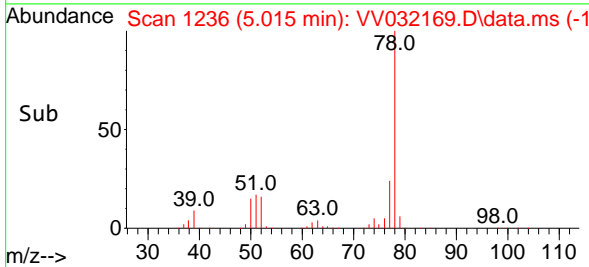
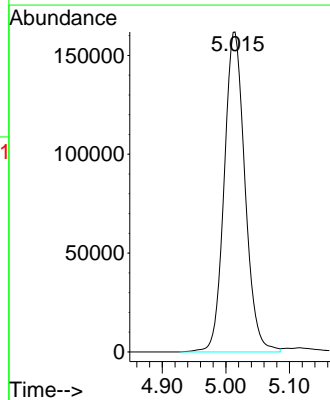
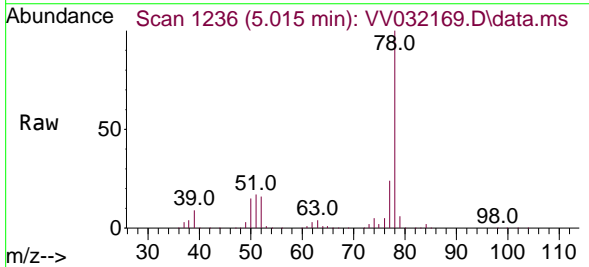


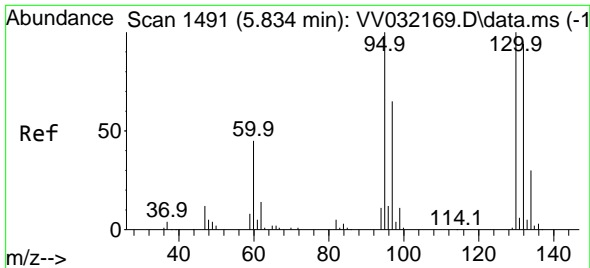
Tgt Ion:117 Resp: 120172
 Ion Ratio Lower Upper
 117 100
 119 95.8 76.6 115.0



#33
 Benzene
 Concen: 58.375 ug/L
 RT: 5.015 min Scan# 1236
 Delta R.T. 0.000 min
 Lab File: VV032169.D
 Acq: 25 Sep 2023 13:26

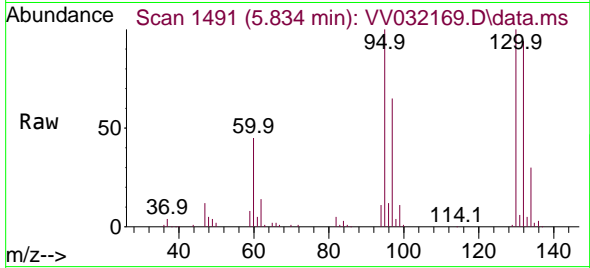
Tgt Ion: 78 Resp: 367366



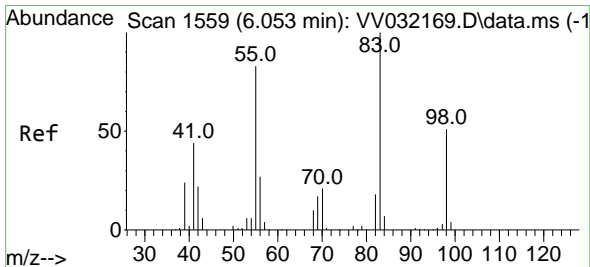
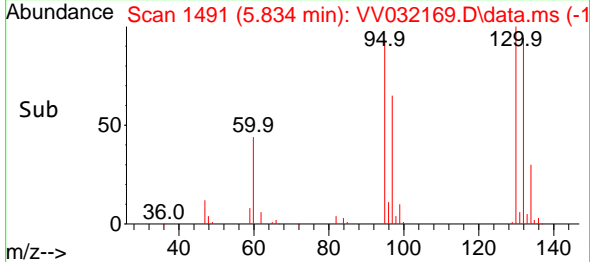
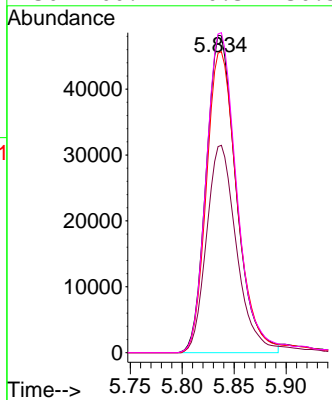


#34
 Trichloroethene
 Concen: 51.873 ug/L
 RT: 5.834 min Scan# 1491
 Delta R.T. 0.000 min
 Lab File: VV032169.D
 Acq: 25 Sep 2023 13:26

Instrument : MSVOA_V
 ClientSampleId :

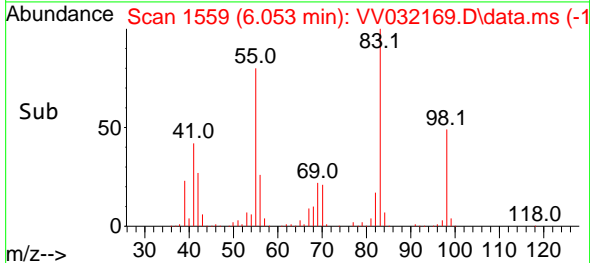
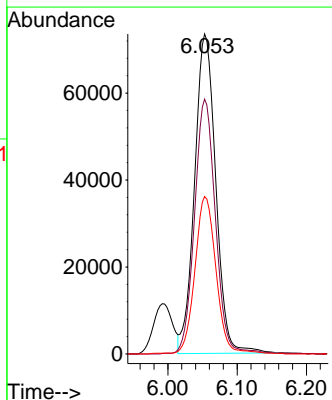
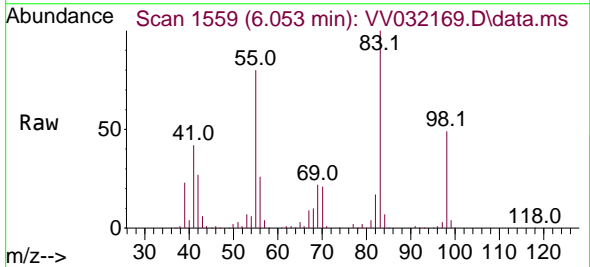


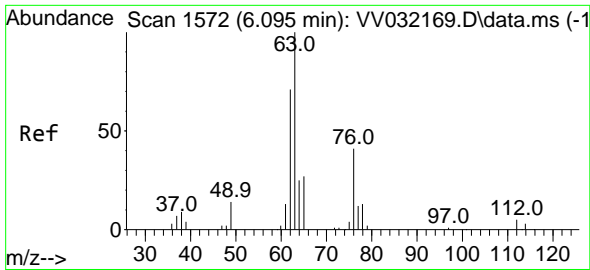
Tgt Ion: 95 Resp: 96732
 Ion Ratio Lower Upper
 95 100
 97 64.9 45.4 84.4
 132 94.4 66.1 122.7
 130 100.4 70.3 130.5



#35
 Methylcyclohexane
 Concen: 60.480 ug/L
 RT: 6.053 min Scan# 1559
 Delta R.T. 0.000 min
 Lab File: VV032169.D
 Acq: 25 Sep 2023 13:26

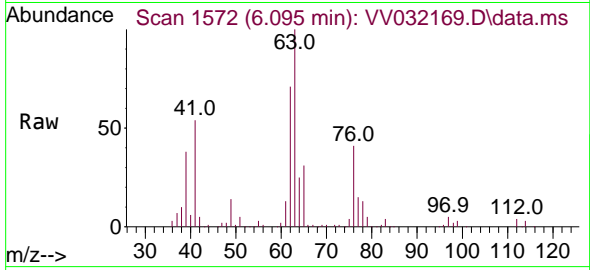
Tgt Ion: 83 Resp: 156387
 Ion Ratio Lower Upper
 83 100
 55 78.6 62.9 94.3
 98 48.6 38.9 58.3



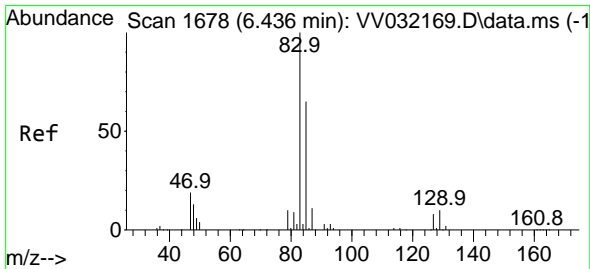
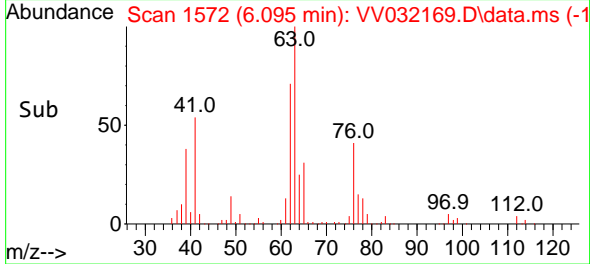
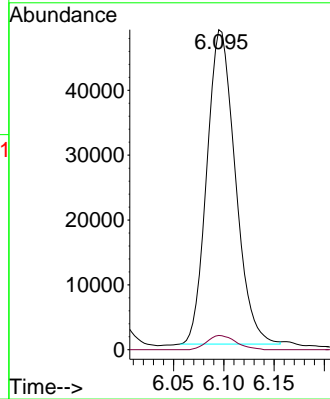


#37
 1,2-Dichloropropane
 Concen: 54.914 ug/L
 RT: 6.095 min Scan# 1572
 Delta R.T. 0.000 min
 Lab File: VV032169.D
 Acq: 25 Sep 2023 13:26

Instrument :
 MSVOA_V
 ClientSampleId :

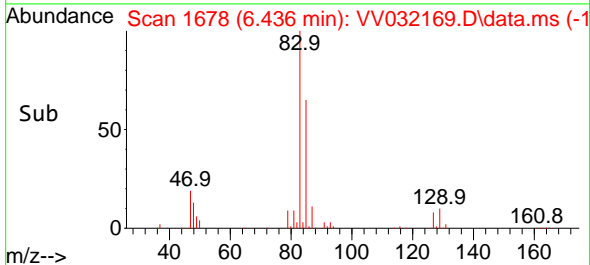
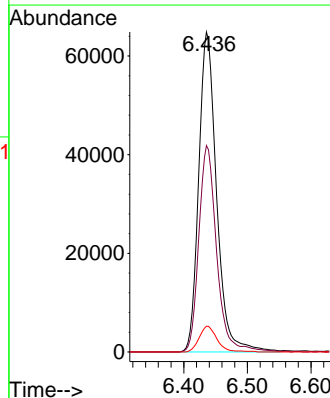
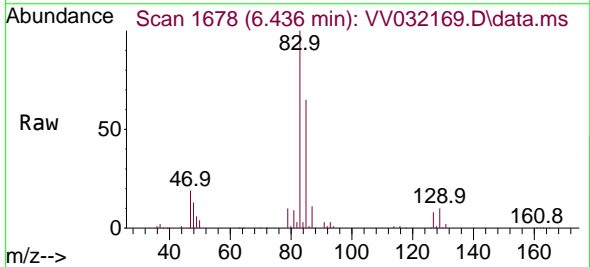


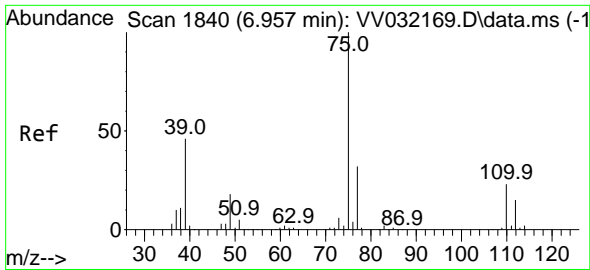
Tgt Ion: 63 Resp: 95427
 Ion Ratio Lower Upper
 63 100
 112 4.6 3.7 5.5



#38
 Bromodichloromethane
 Concen: 51.889 ug/L
 RT: 6.436 min Scan# 1678
 Delta R.T. 0.000 min
 Lab File: VV032169.D
 Acq: 25 Sep 2023 13:26

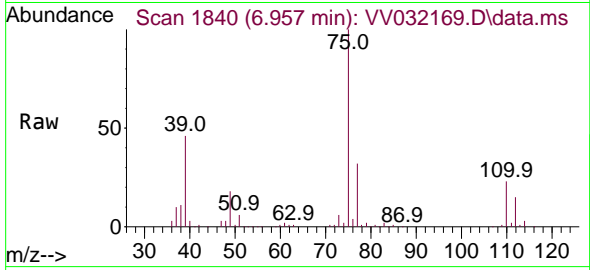
Tgt Ion: 83 Resp: 126791
 Ion Ratio Lower Upper
 83 100
 85 64.5 45.1 83.9
 127 8.0 6.4 9.6



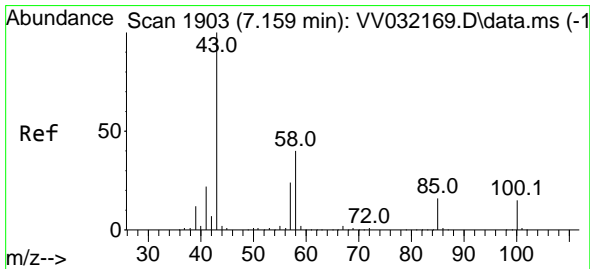
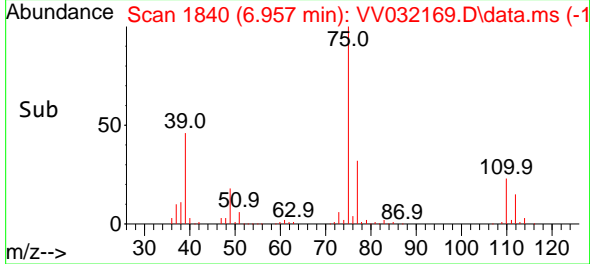
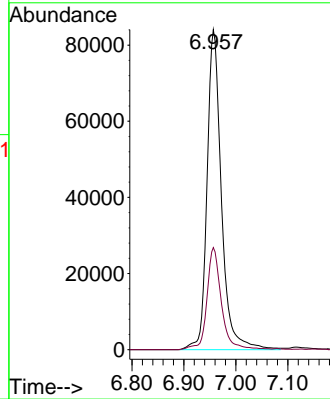


#39
 cis-1,3-Dichloropropene
 Concen: 53.710 ug/L
 RT: 6.957 min Scan# 1840
 Delta R.T. 0.000 min
 Lab File: VV032169.D
 Acq: 25 Sep 2023 13:26

Instrument : MSVOA_V
 ClientSampleId :

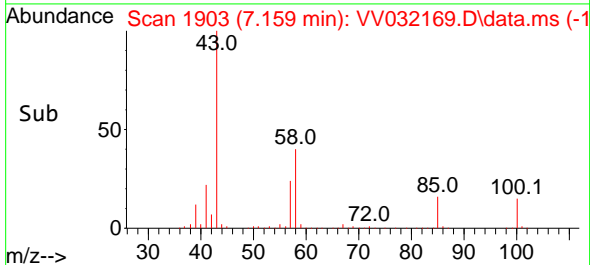
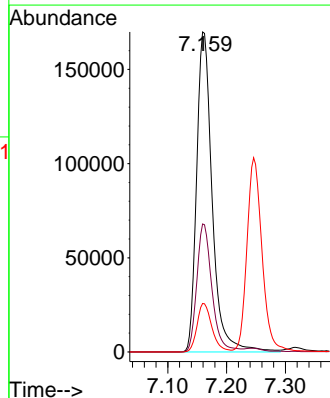
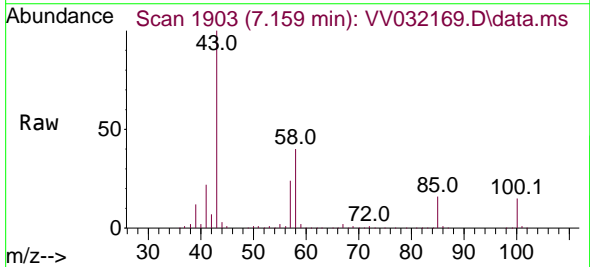


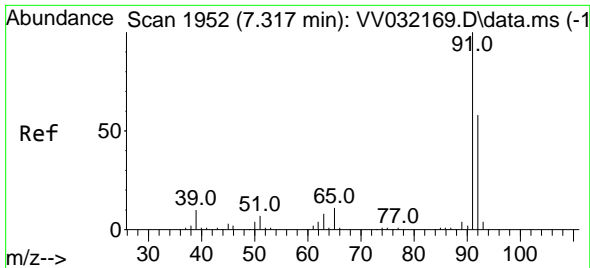
Tgt Ion: 75 Resp: 161646
 Ion Ratio Lower Upper
 75 100
 77 31.9 22.3 41.5



#40
 4-Methyl-2-pentanone
 Concen: 112.726 ug/L
 RT: 7.159 min Scan# 1903
 Delta R.T. 0.000 min
 Lab File: VV032169.D
 Acq: 25 Sep 2023 13:26

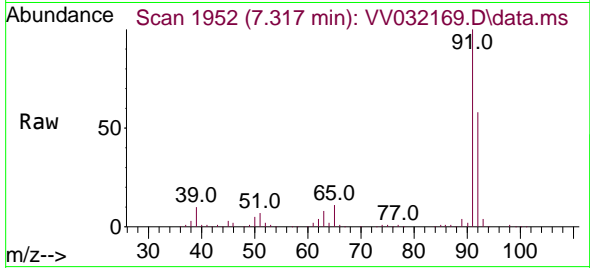
Tgt Ion: 43 Resp: 313389
 Ion Ratio Lower Upper
 43 100
 58 38.8 31.0 46.6
 100 14.5 11.6 17.4



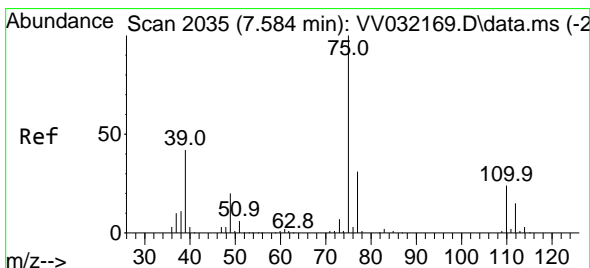
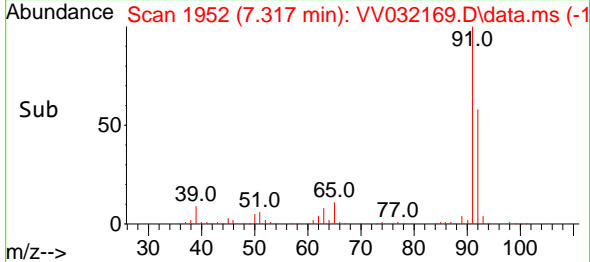
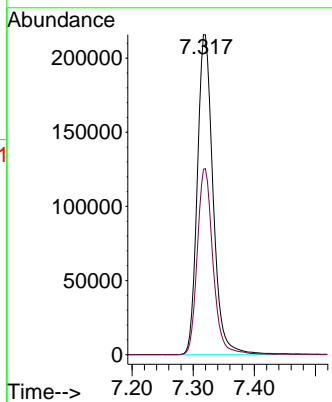


#42
 Toluene
 Concen: 56.518 ug/L
 RT: 7.317 min Scan# 1952
 Delta R.T. 0.000 min
 Lab File: VV032169.D
 Acq: 25 Sep 2023 13:26

Instrument : MSVOA_V
 ClientSampleId :

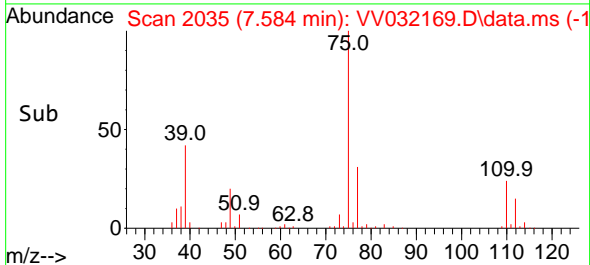
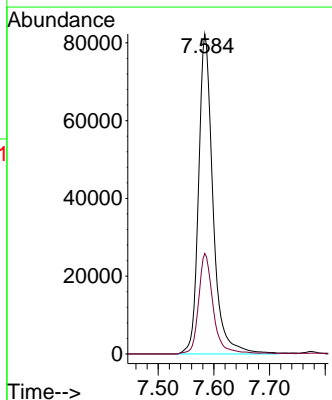
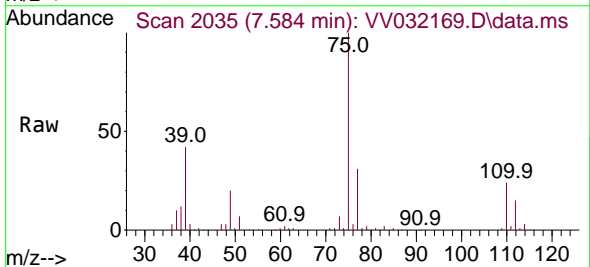


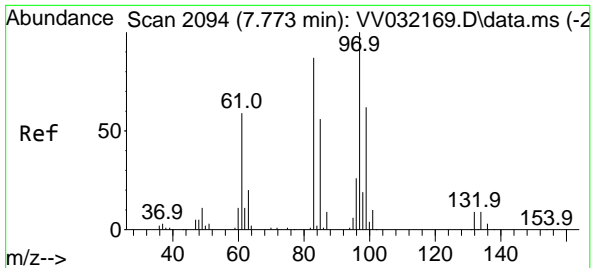
Tgt Ion: 91 Resp: 386840
 Ion Ratio Lower Upper
 91 100
 92 57.9 40.5 75.3



#44
 trans-1,3-Dichloropropene
 Concen: 51.557 ug/L
 RT: 7.584 min Scan# 2035
 Delta R.T. 0.000 min
 Lab File: VV032169.D
 Acq: 25 Sep 2023 13:26

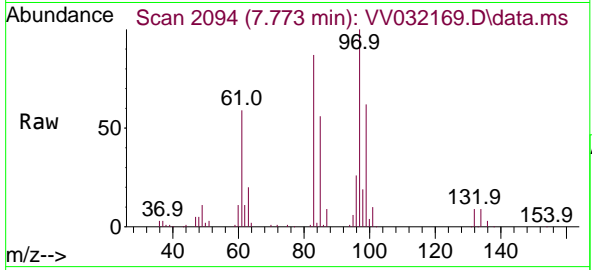
Tgt Ion: 75 Resp: 148036
 Ion Ratio Lower Upper
 75 100
 77 31.4 22.0 40.8





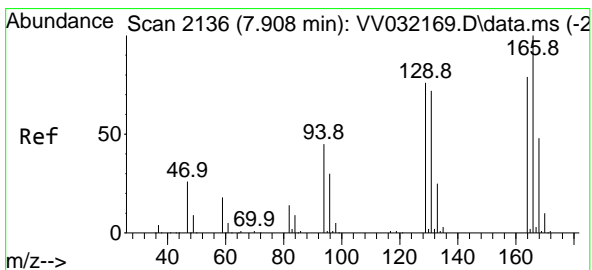
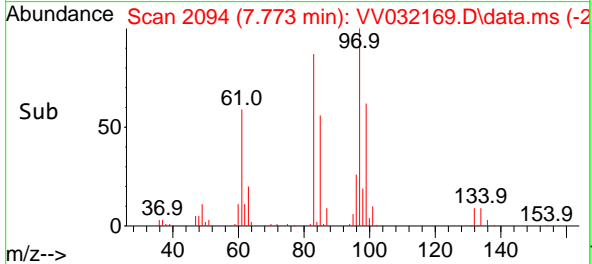
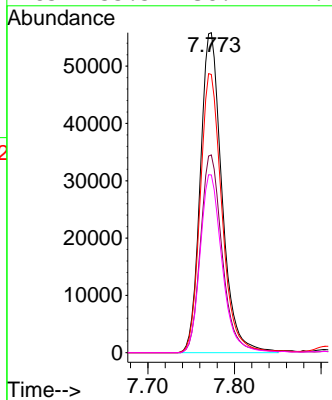
#45
 1,1,2-Trichloroethane
 Concen: 54.801 ug/L
 RT: 7.773 min Scan# 2094
 Delta R.T. 0.000 min
 Lab File: VV032169.D
 Acq: 25 Sep 2023 13:26

Instrument : MSVOA_V
 ClientSampleId :

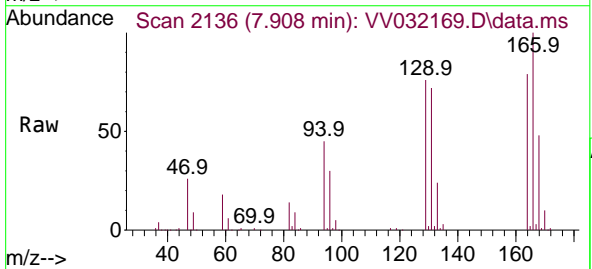


Tgt Ion: 97 Resp: 97029

Ion	Ratio	Lower	Upper
97	100		
99	61.8	43.3	80.3
83	86.9	60.8	113.0
85	55.5	38.9	72.2

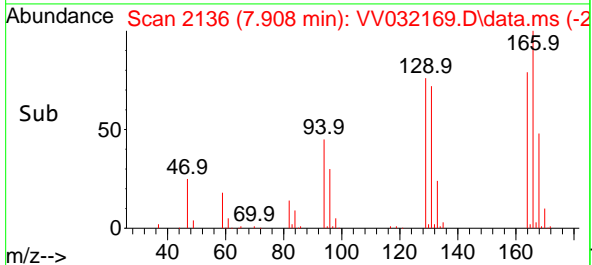
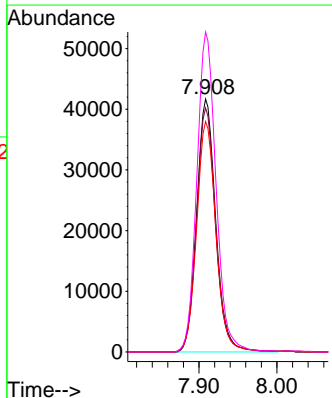


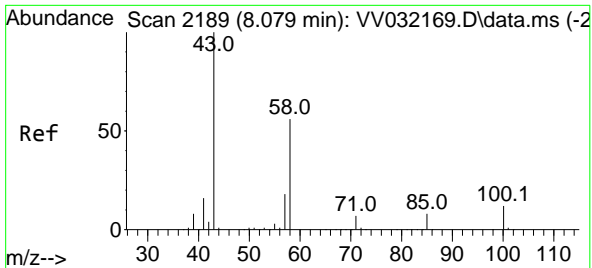
#46
 Tetrachloroethene
 Concen: 58.749 ug/L
 RT: 7.908 min Scan# 2136
 Delta R.T. 0.000 min
 Lab File: VV032169.D
 Acq: 25 Sep 2023 13:26



Tgt Ion: 164 Resp: 70986

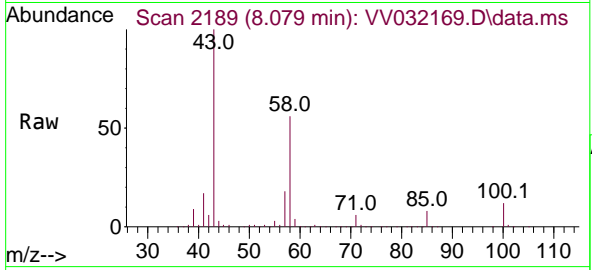
Ion	Ratio	Lower	Upper
164	100		
129	96.4	67.5	125.3
131	91.1	63.8	118.4
166	126.5	88.5	164.4





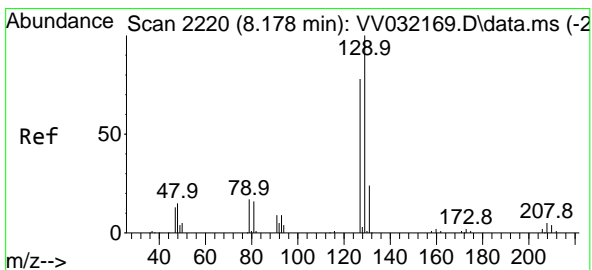
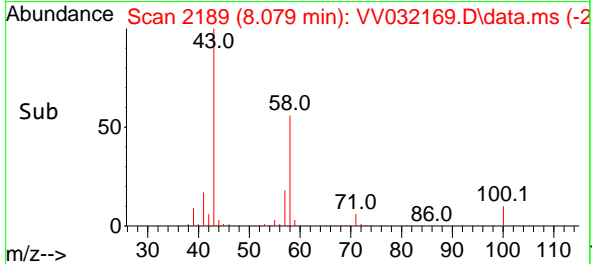
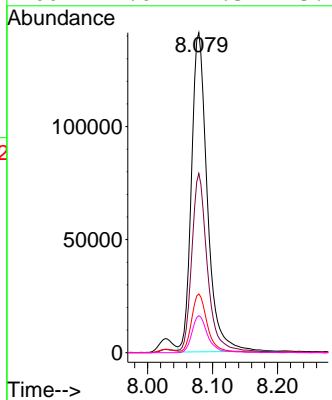
#48
 2-Hexanone
 Concen: 113.059 ug/L
 RT: 8.079 min Scan# 2189
 Delta R.T. 0.000 min
 Lab File: VV032169.D
 Acq: 25 Sep 2023 13:26

Instrument :
 MSVOA_V
 ClientSampleId :



Tgt Ion: 43 Resp: 239812

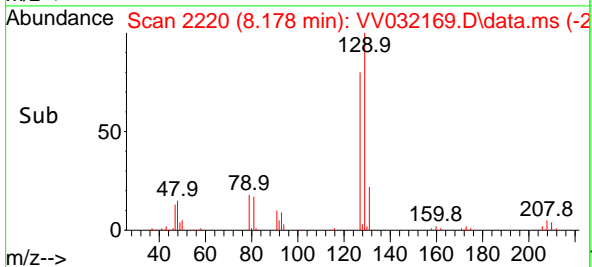
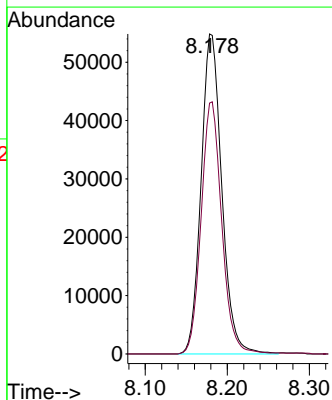
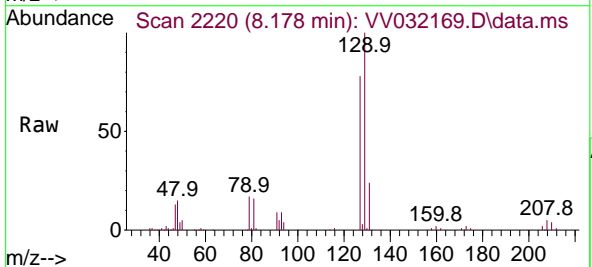
Ion	Ratio	Lower	Upper
43	100		
58	55.6	44.5	66.7
57	17.4	13.9	20.9
100	11.6	9.3	13.9

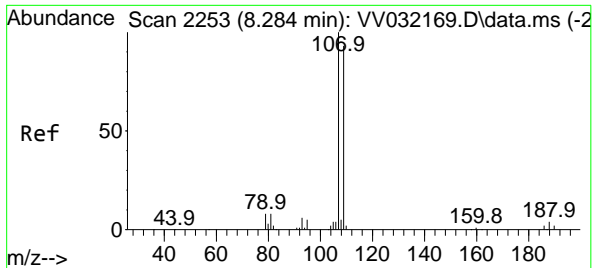


#49
 Dibromochloromethane
 Concen: 53.368 ug/L
 RT: 8.178 min Scan# 2220
 Delta R.T. 0.000 min
 Lab File: VV032169.D
 Acq: 25 Sep 2023 13:26

Tgt Ion: 129 Resp: 96100

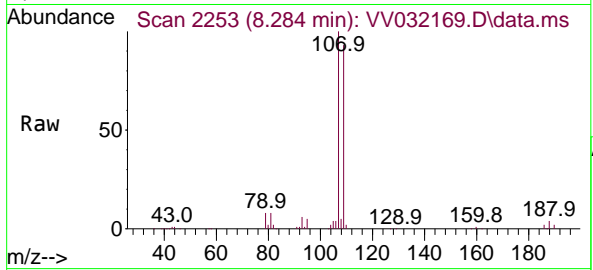
Ion	Ratio	Lower	Upper
129	100		
127	78.4	54.9	101.9



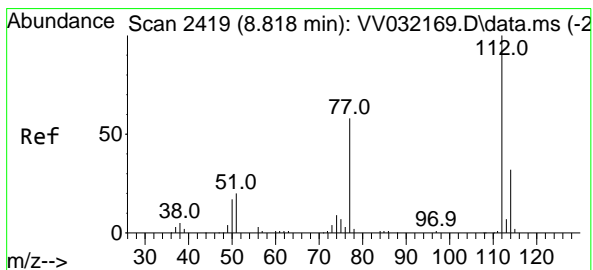
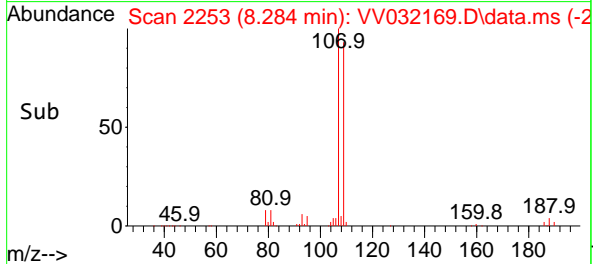
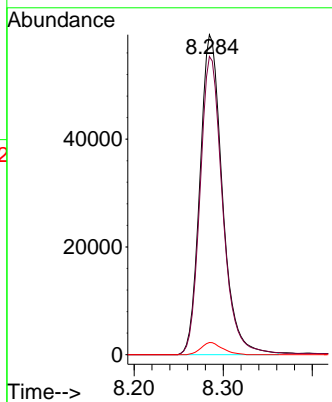


#50
 1,2-Dibromoethane
 Concen: 55.900 ug/L
 RT: 8.284 min Scan# 21
 Delta R.T. 0.000 min
 Lab File: VV032169.D
 Acq: 25 Sep 2023 13:26

Instrument :
 MSVOA_V
 ClientSampleId :

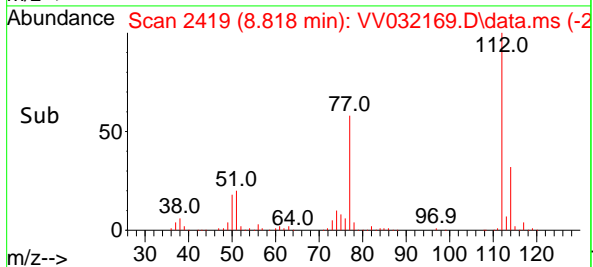
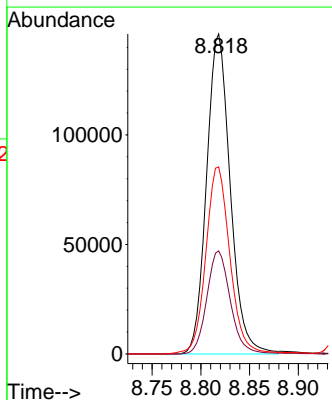
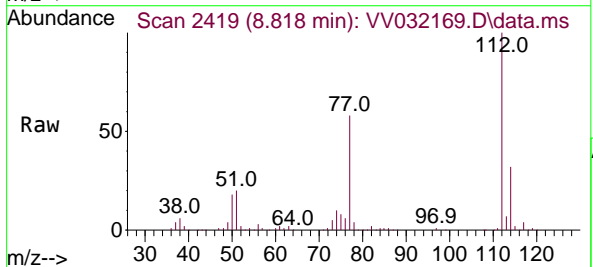


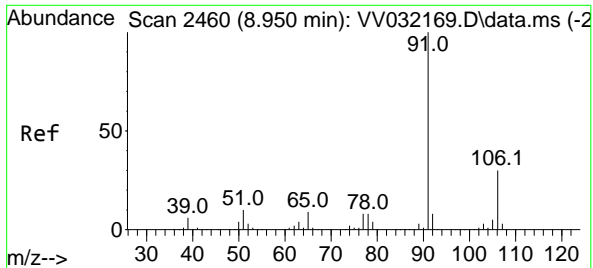
Tgt Ion:107 Resp: 104112
 Ion Ratio Lower Upper
 107 100
 109 93.2 65.2 121.2
 188 3.8 3.0 4.6



#51
 Chlorobenzene
 Concen: 54.742 ug/L
 RT: 8.818 min Scan# 2419
 Delta R.T. 0.000 min
 Lab File: VV032169.D
 Acq: 25 Sep 2023 13:26

Tgt Ion:112 Resp: 247390
 Ion Ratio Lower Upper
 112 100
 114 32.2 22.5 41.9
 77 58.4 46.7 70.1

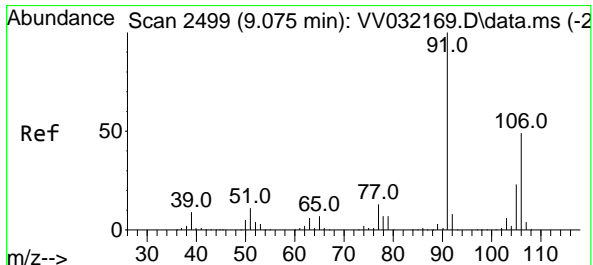
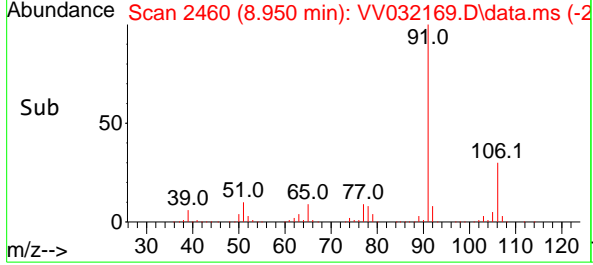
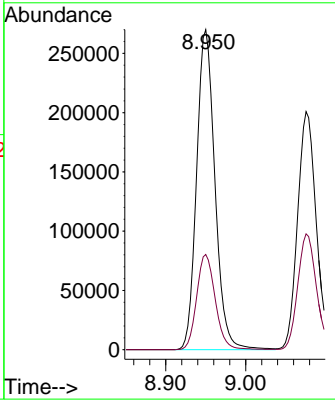
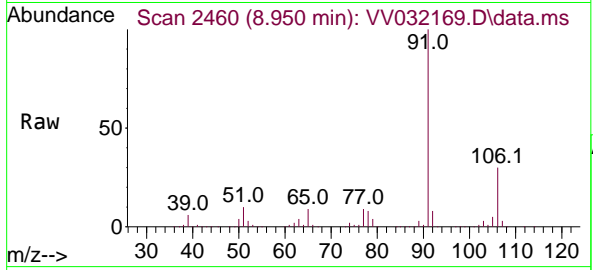




#52
 Ethylbenzene
 Concen: 53.859 ug/L
 RT: 8.950 min Scan# 2460
 Delta R.T. 0.000 min
 Lab File: VV032169.D
 Acq: 25 Sep 2023 13:26

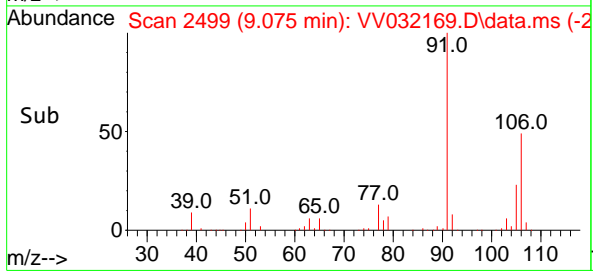
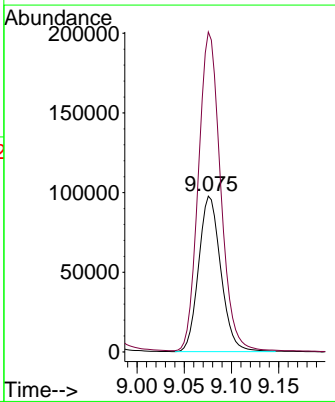
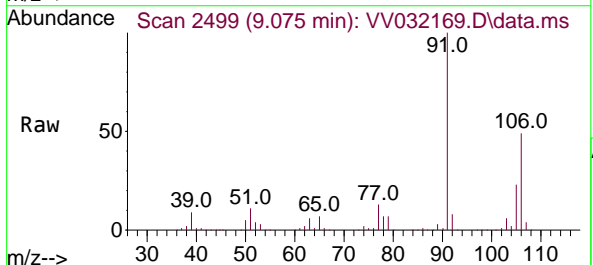
Instrument : MSVOA_V
 ClientSampleId :

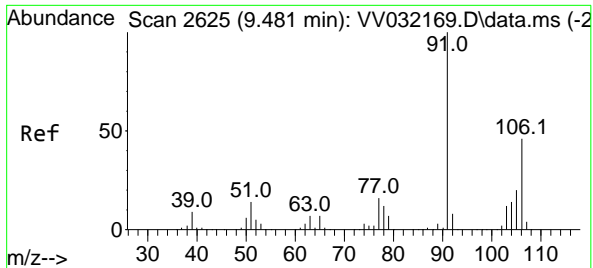
Tgt Ion: 91 Resp: 431466
 Ion Ratio Lower Upper
 91 100
 106 29.8 20.9 38.7



#53
 m,p-Xylene
 Concen: 53.705 ug/L
 RT: 9.075 min Scan# 2499
 Delta R.T. 0.000 min
 Lab File: VV032169.D
 Acq: 25 Sep 2023 13:26

Tgt Ion: 106 Resp: 159379
 Ion Ratio Lower Upper
 106 100
 91 205.4 143.8 267.0

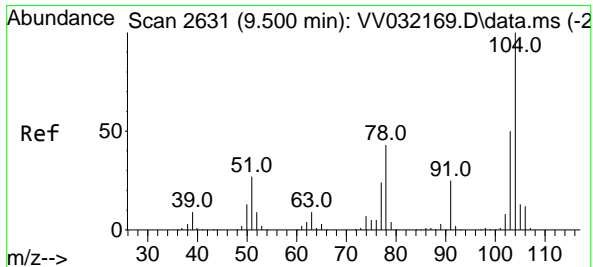
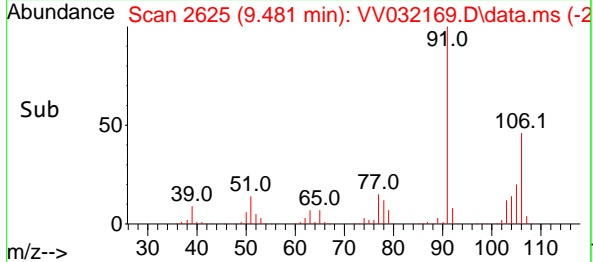
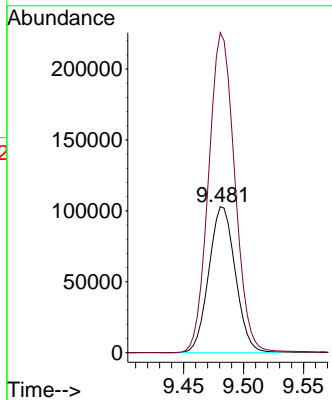
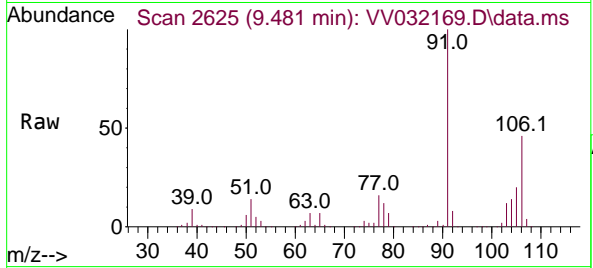




#54
 o-Xylene
 Concen: 53.779 ug/L
 RT: 9.481 min Scan# 2625
 Delta R.T. 0.000 min
 Lab File: VV032169.D
 Acq: 25 Sep 2023 13:26

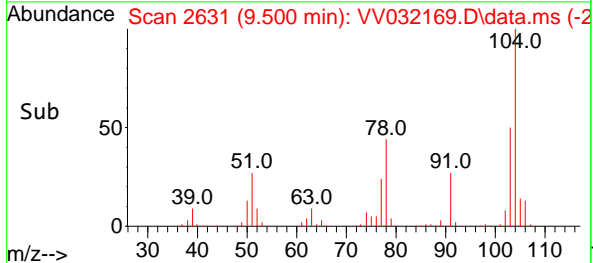
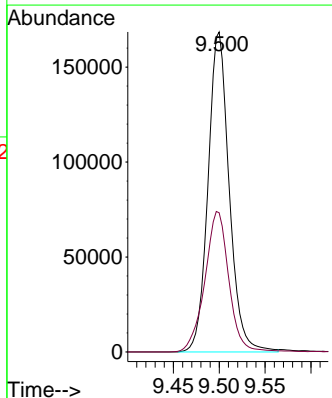
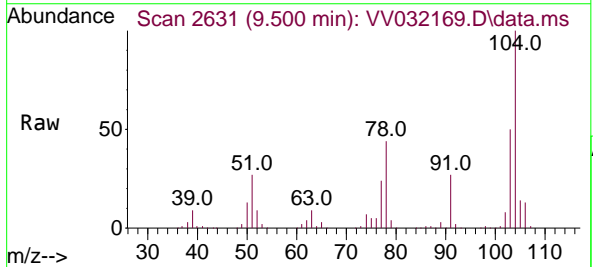
Instrument : MSVOA_V
 ClientSampleId :

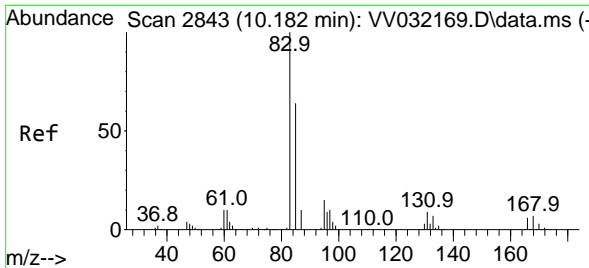
Tgt Ion:106 Resp: 158443
 Ion Ratio Lower Upper
 106 100
 91 219.1 153.4 284.8



#55
 Styrene
 Concen: 52.234 ug/L
 RT: 9.500 min Scan# 2631
 Delta R.T. 0.000 min
 Lab File: VV032169.D
 Acq: 25 Sep 2023 13:26

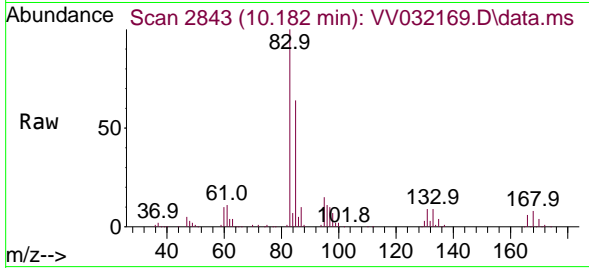
Tgt Ion:104 Resp: 270810
 Ion Ratio Lower Upper
 104 100
 78 43.5 30.4 56.5



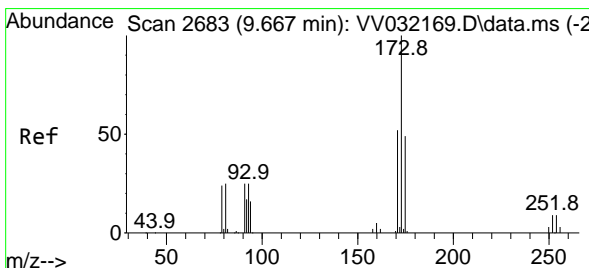
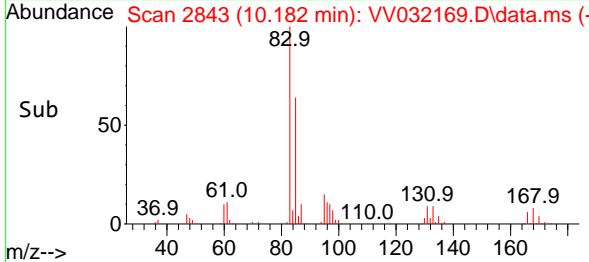
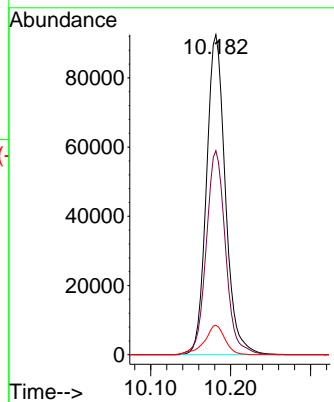


#57
 1,1,2-Tetrachloroethane
 Concen: 58.976 ug/L
 RT: 10.182 min Scan# 2843
 Delta R.T. 0.000 min
 Lab File: VV032169.D
 Acq: 25 Sep 2023 13:26

Instrument : MSVOA_V
 ClientSampleId :

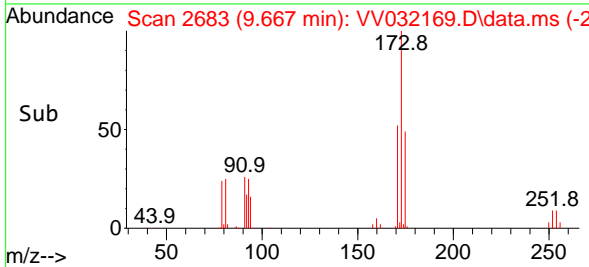
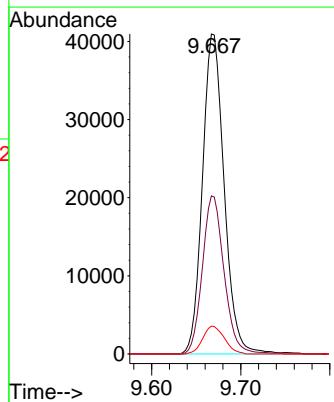
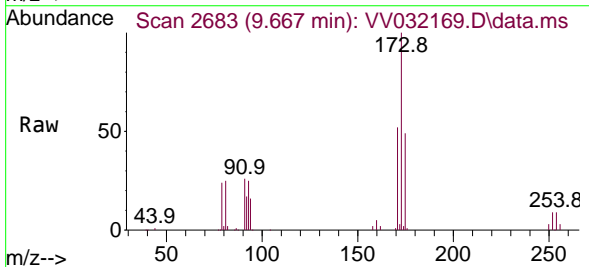


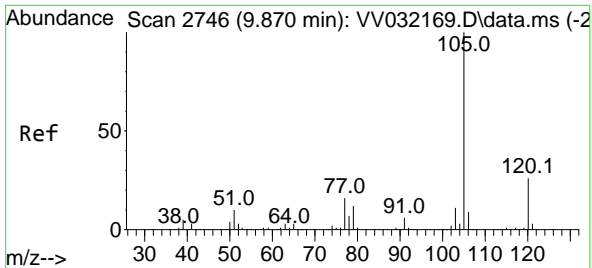
Tgt Ion: 83 Resp: 151778
 Ion Ratio Lower Upper
 83 100
 85 63.8 44.7 82.9
 131 9.2 7.4 11.0



#59
 Bromoform
 Concen: 54.766 ug/L
 RT: 9.667 min Scan# 2683
 Delta R.T. 0.000 min
 Lab File: VV032169.D
 Acq: 25 Sep 2023 13:26

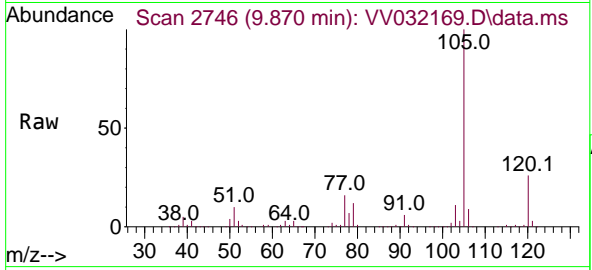
Tgt Ion: 173 Resp: 69294
 Ion Ratio Lower Upper
 173 100
 175 49.4 39.5 59.3
 254 8.7 7.0 10.4



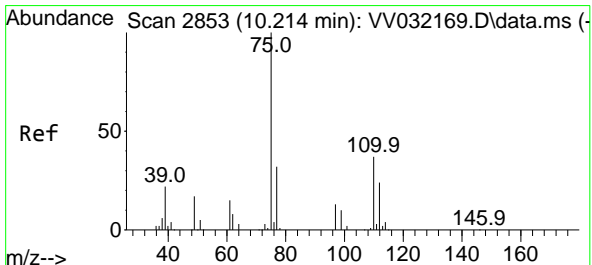
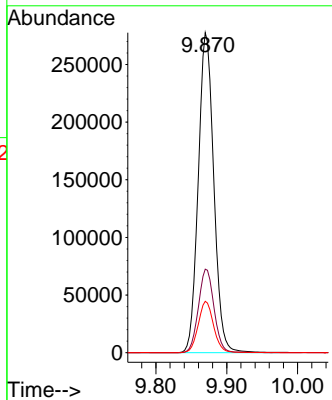
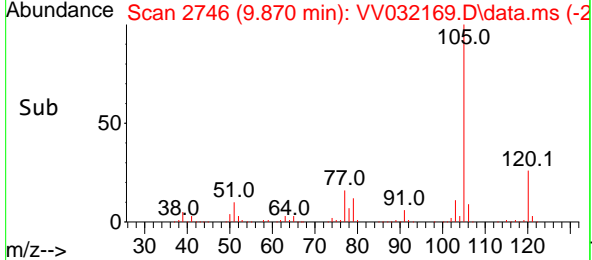


#60
 Isopropylbenzene
 Concen: 52.328 ug/L
 RT: 9.870 min Scan# 21
 Delta R.T. 0.000 min
 Lab File: VV032169.D
 Acq: 25 Sep 2023 13:26

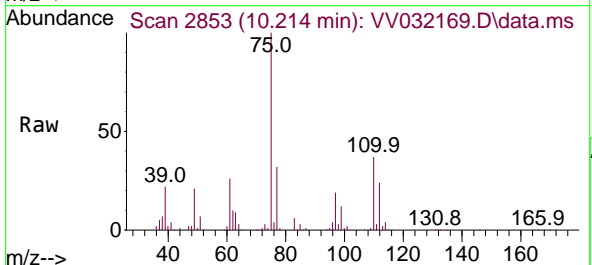
Instrument :
 MSVOA_V
 ClientSampleId :



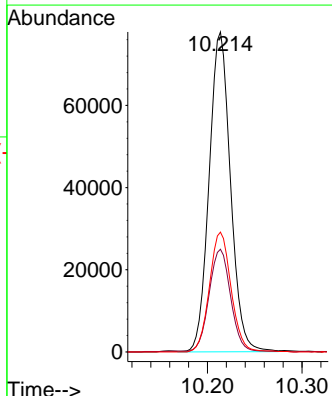
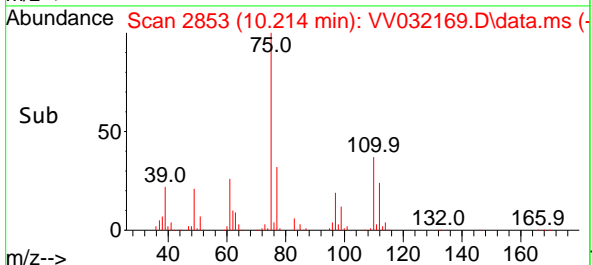
Tgt Ion:105 Resp: 423077
 Ion Ratio Lower Upper
 105 100
 120 26.3 21.0 31.6
 77 15.9 12.7 19.1

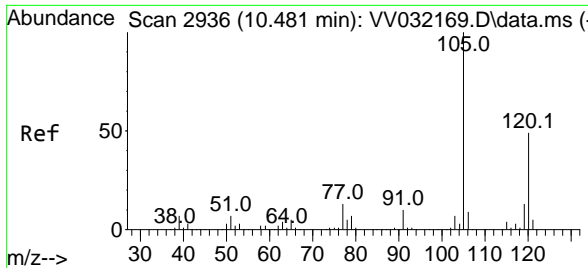


#61
 1,2,3-Trichloropropane
 Concen: 53.223 ug/L
 RT: 10.214 min Scan# 2853
 Delta R.T. 0.000 min
 Lab File: VV032169.D
 Acq: 25 Sep 2023 13:26



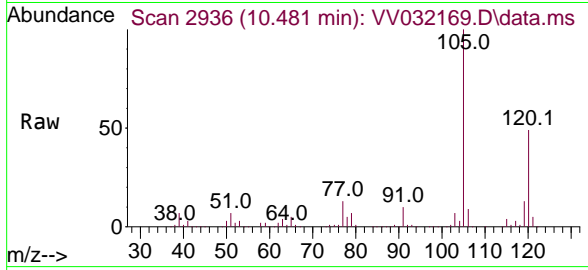
Tgt Ion: 75 Resp: 122162
 Ion Ratio Lower Upper
 75 100
 77 32.6 26.1 39.1
 110 38.1 30.5 45.7



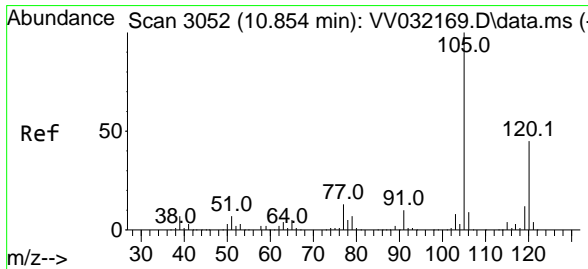
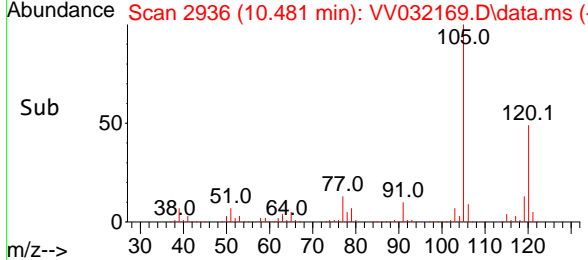
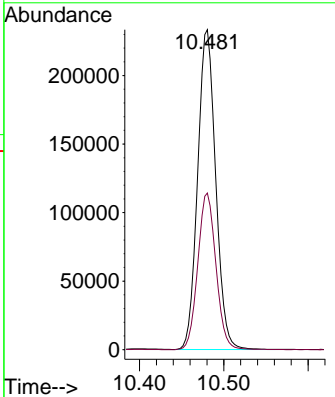


#62
 1,3,5-Trimethylbenzene
 Concen: 51.325 ug/L
 RT: 10.481 min Scan# 2936
 Delta R.T. 0.000 min
 Lab File: VV032169.D
 Acq: 25 Sep 2023 13:26

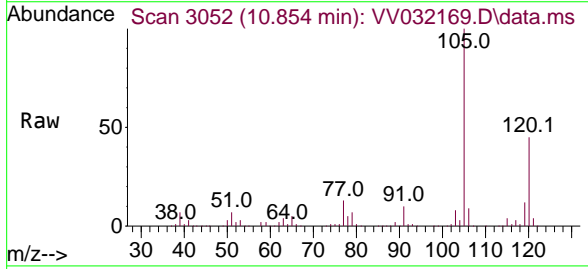
Instrument : MSVOA_V
 ClientSampleId :



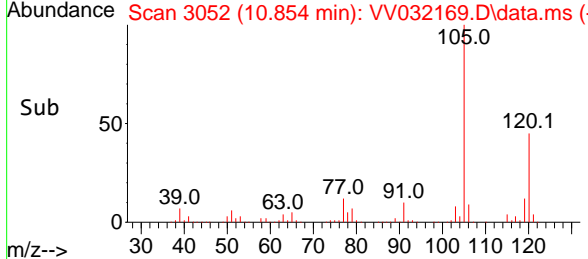
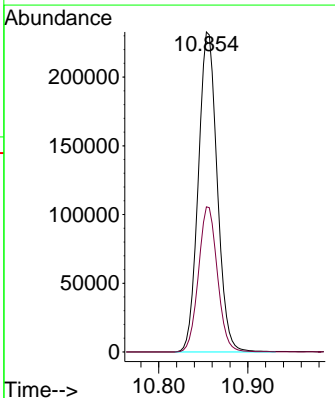
Tgt Ion:105 Resp: 348046
 Ion Ratio Lower Upper
 105 100
 120 49.2 39.4 59.0

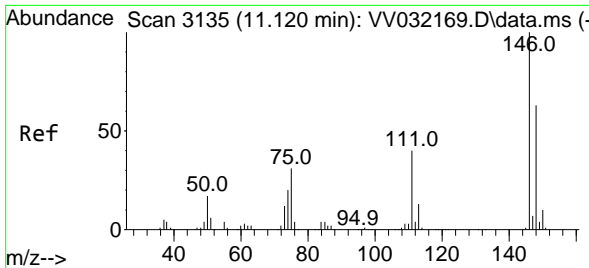


#63
 1,2,4-Trimethylbenzene
 Concen: 50.400 ug/L
 RT: 10.854 min Scan# 3052
 Delta R.T. 0.000 min
 Lab File: VV032169.D
 Acq: 25 Sep 2023 13:26



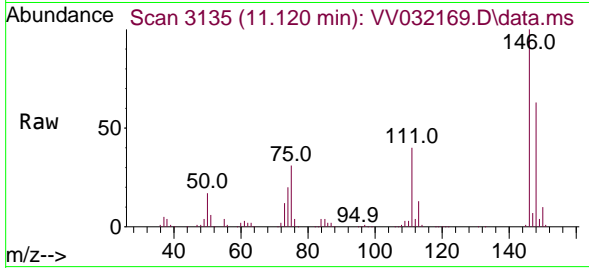
Tgt Ion:105 Resp: 342440
 Ion Ratio Lower Upper
 105 100
 120 45.6 36.5 54.7



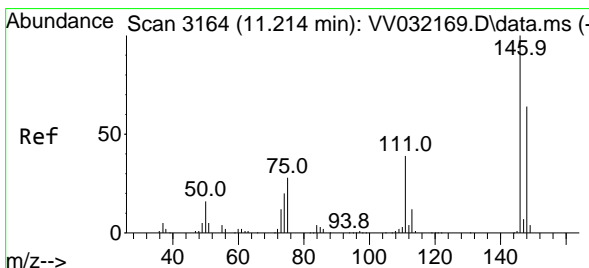
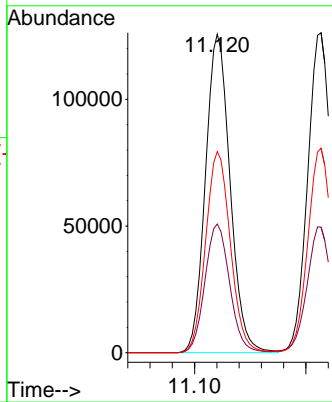
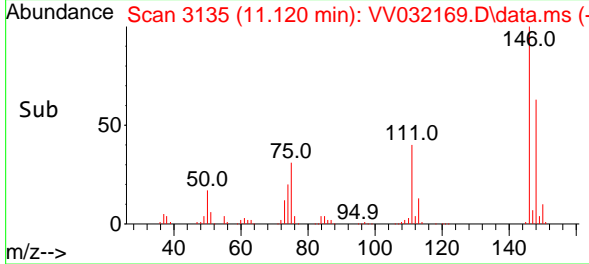


#64
 1,3-Dichlorobenzene
 Concen: 52.986 ug/L
 RT: 11.120 min Scan# 3135
 Delta R.T. 0.000 min
 Lab File: VV032169.D
 Acq: 25 Sep 2023 13:26

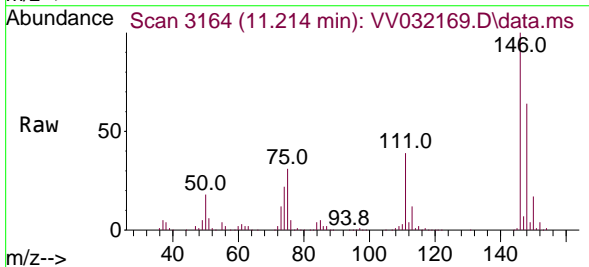
Instrument : MSVOA_V
 ClientSampleId :



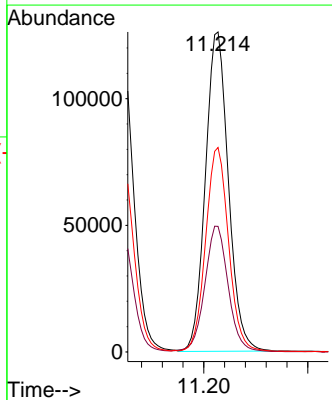
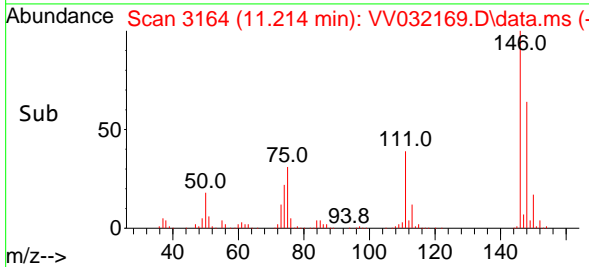
Tgt Ion:146 Resp: 193293
 Ion Ratio Lower Upper
 146 100
 111 40.4 28.3 52.5
 148 63.1 44.2 82.0

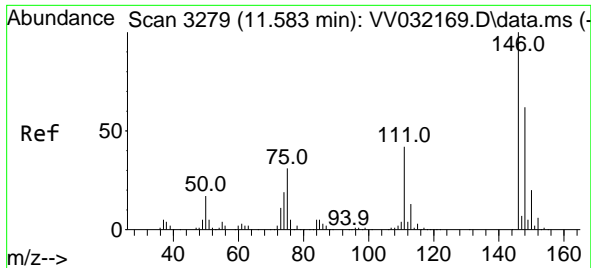


#65
 1,4-Dichlorobenzene
 Concen: 52.282 ug/L
 RT: 11.214 min Scan# 3164
 Delta R.T. 0.000 min
 Lab File: VV032169.D
 Acq: 25 Sep 2023 13:26



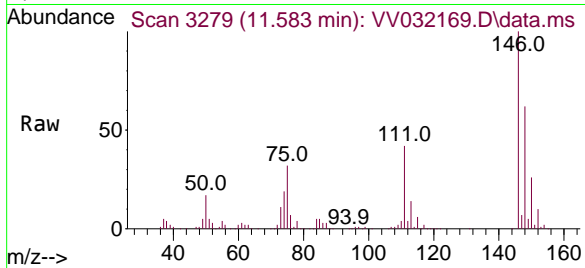
Tgt Ion:146 Resp: 193634
 Ion Ratio Lower Upper
 146 100
 111 39.3 27.5 51.1
 148 63.9 44.7 83.1



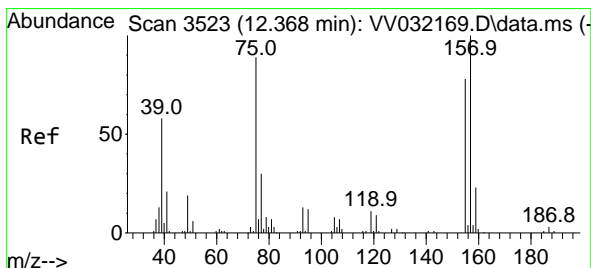
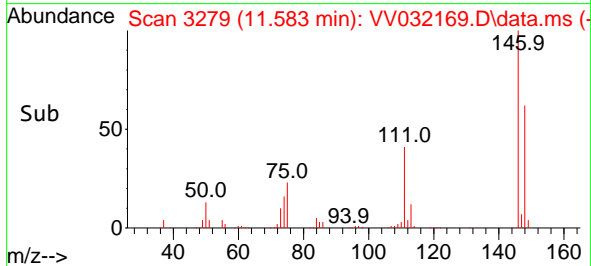
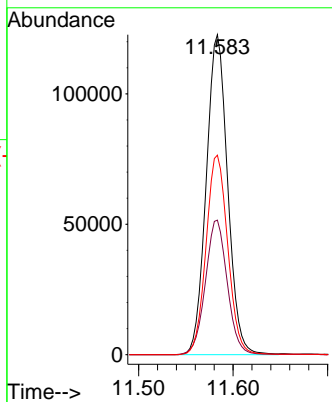


#67
 1,2-Dichlorobenzene
 Concen: 53.303 ug/L
 RT: 11.583 min Scan# 31
 Delta R.T. 0.000 min
 Lab File: VV032169.D
 Acq: 25 Sep 2023 13:26

Instrument :
 MSVOA_V
 ClientSampleId :

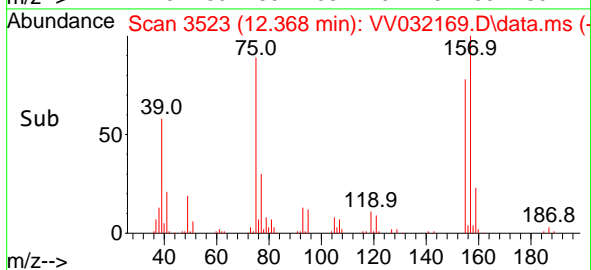
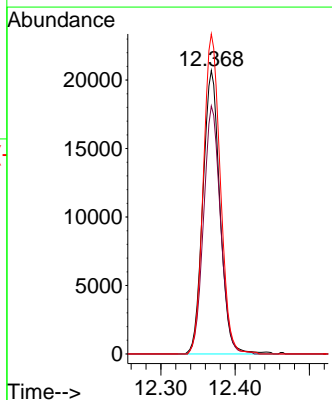
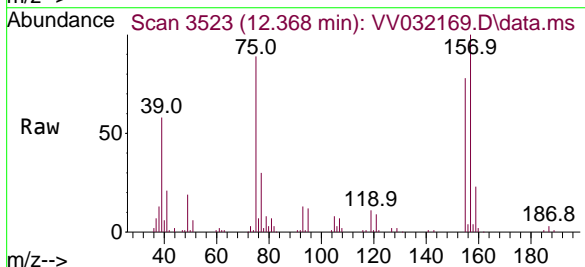


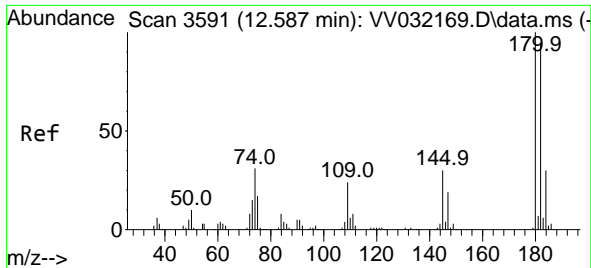
Tgt Ion:146 Resp: 193175
 Ion Ratio Lower Upper
 146 100
 111 42.0 33.6 50.4
 148 62.4 49.9 74.9



#68
 1,2-Dibromo-3-chloropropane
 Concen: 49.056 ug/L
 RT: 12.368 min Scan# 3523
 Delta R.T. 0.000 min
 Lab File: VV032169.D
 Acq: 25 Sep 2023 13:26

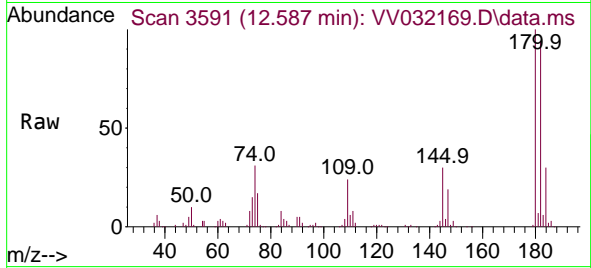
Tgt Ion: 75 Resp: 32988
 Ion Ratio Lower Upper
 75 100
 155 87.5 70.0 105.0
 157 113.0 90.4 135.6



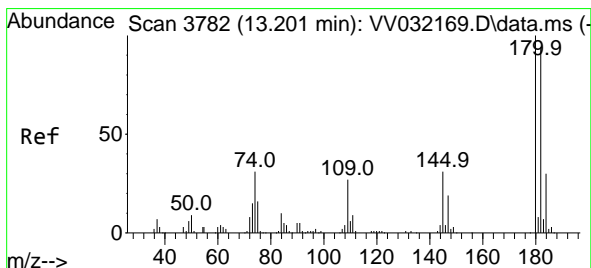
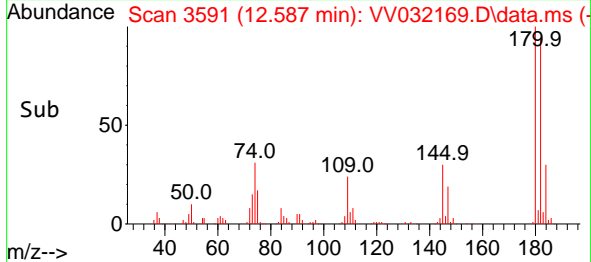
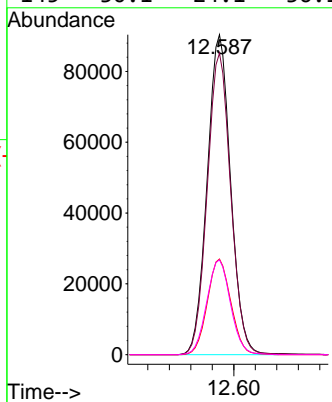


#69
 1,3,5-Trichlorobenzene
 Concen: 51.769 ug/L
 RT: 12.587 min Scan# 3591
 Delta R.T. 0.000 min
 Lab File: VV032169.D
 Acq: 25 Sep 2023 13:26

Instrument : MSVOA_V
 ClientSampleId :

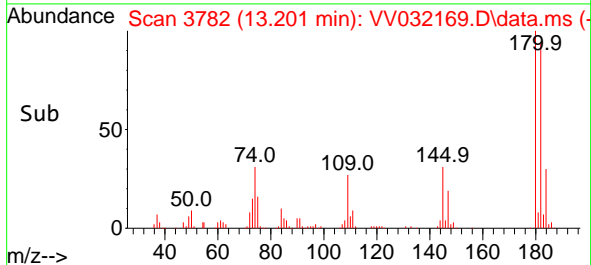
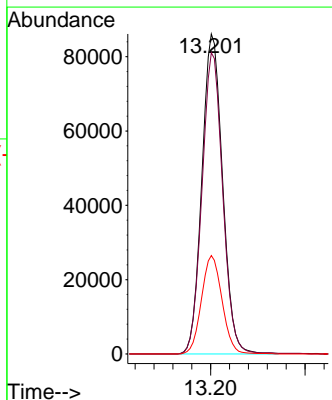
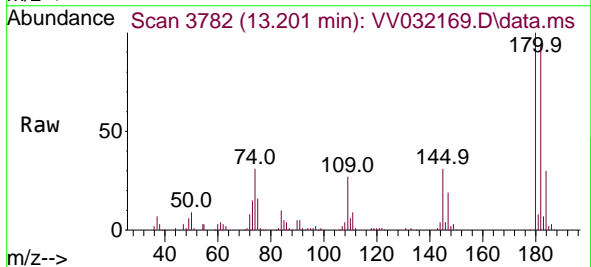


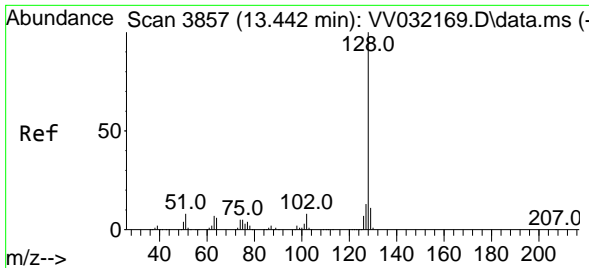
Tgt Ion:180 Resp: 136796
 Ion Ratio Lower Upper
 180 100
 182 94.5 75.6 113.4
 184 29.9 23.9 35.9
 145 30.1 24.1 36.1



#70
 1,2,4-trichlorobenzene
 Concen: 51.700 ug/L
 RT: 13.201 min Scan# 3782
 Delta R.T. 0.000 min
 Lab File: VV032169.D
 Acq: 25 Sep 2023 13:26

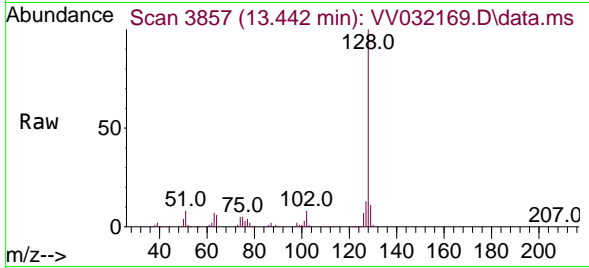
Tgt Ion:180 Resp: 130685
 Ion Ratio Lower Upper
 180 100
 182 94.1 75.3 112.9
 145 30.5 24.4 36.6





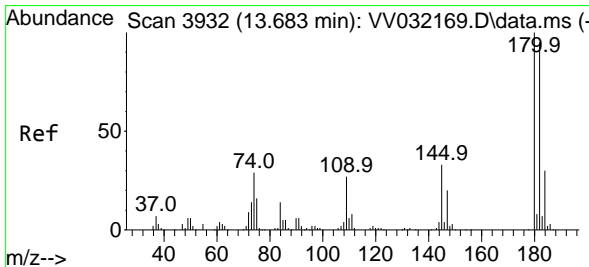
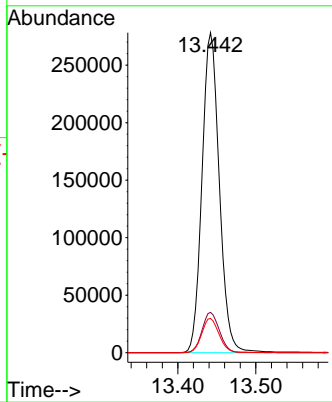
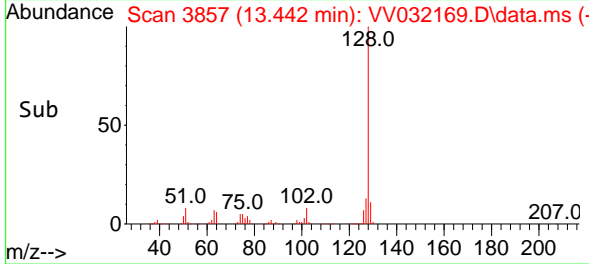
#71
 Naphthalene
 Concen: 52.946 ug/L
 RT: 13.442 min Scan# 3857
 Delta R.T. 0.000 min
 Lab File: VV032169.D
 Acq: 25 Sep 2023 13:26

Instrument : MSVOA_V
 ClientSampleId :

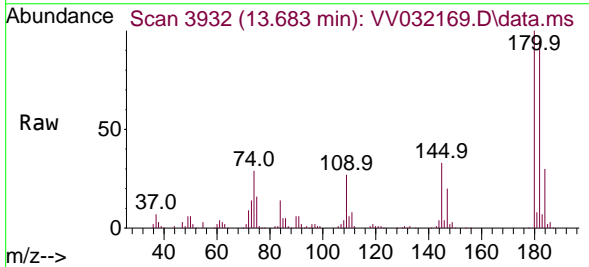


Tgt Ion:128 Resp: 429374

Ion	Ratio	Lower	Upper
128	100		
127	12.6	10.1	15.1
129	10.7	8.6	12.8



#72
 1,2,3-Trichlorobenzene
 Concen: 53.534 ug/L
 RT: 13.683 min Scan# 3932
 Delta R.T. 0.000 min
 Lab File: VV032169.D
 Acq: 25 Sep 2023 13:26



Tgt Ion:180 Resp: 131009

Ion	Ratio	Lower	Upper
180	100		
182	94.0	75.2	112.8
145	32.3	25.8	38.8

