

Data Path : Z:\voasrv\HPCHEM1\MSVOA\_V\DATA\VV092724\  
 Data File : VV037639.D  
 Acq On : 28 Sep 2024 03:27  
 Operator : SY/MD  
 Sample : VIBLK392  
 Misc : 5mL/MSVOA\_V/WATER  
 ALS Vial : 1 Sample Multiplier: 1

Instrument :  
 MSVOA\_V  
 ClientSampleId :  
 VIBLK392

Quant Time: Sep 28 04:24:22 2024  
 Quant Method : Z:\voasrv\HPCHEM1\MSVOA\_V\Method\SFAMVLM092624WMA.M  
 Quant Title : VOC Analysis  
 QLast Update : Sat Sep 28 00:49:19 2024  
 Response via : Initial Calibration

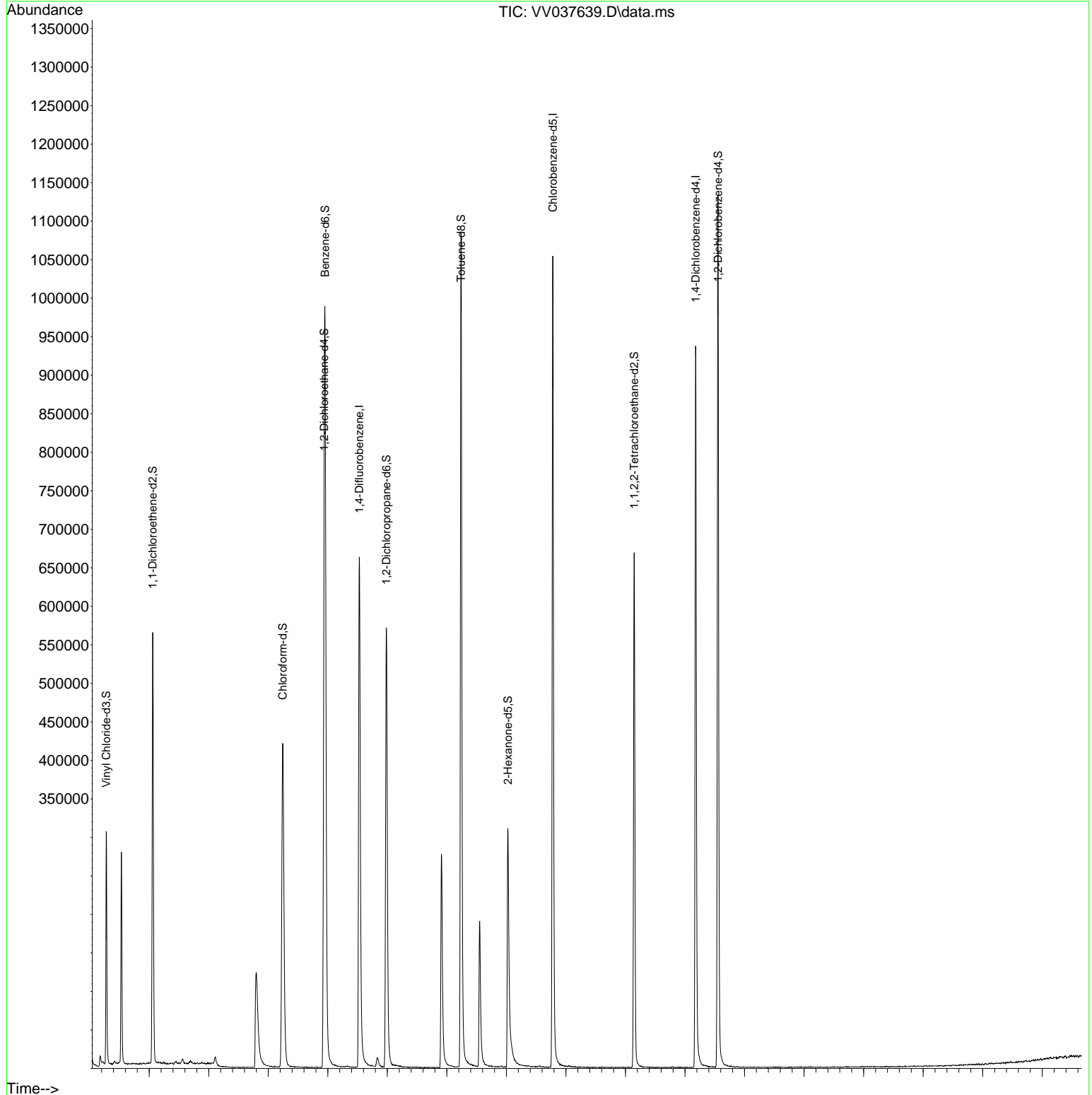
Compound	R.T.	QIon	Response	Conc	Units	Dev(Min)
-----						
Internal Standards						
1) 1,4-Difluorobenzene	5.529	114	596898	50.000	ug/L	0.00
28) Chlorobenzene-d5	8.779	117	572430	50.000	ug/L	0.00
58) 1,4-Dichlorobenzene-d4	11.178	152	250661	50.000	ug/L	0.00
System Monitoring Compounds						
4) Vinyl Chloride-d3	1.278	65	202832	38.710	ug/L	0.00
Spiked Amount	50.000	Range 60 - 135	Recovery =	77.420%		
7) Chloroethane-d5	1.532	69	179326	44.091	ug/L	0.00
Spiked Amount	50.000	Range 70 - 130	Recovery =	88.180%		
11) 1,1-Dichloroethene-d2	2.059	65	93325	42.631	ug/L	0.00
Spiked Amount	50.000	Range 60 - 125	Recovery =	85.260%		
21) 2-Butanone-d5	3.793	46	182154	97.601	ug/L	0.00
Spiked Amount	100.000	Range 40 - 130	Recovery =	97.600%		
24) Chloroform-d	4.243	84	456282	48.945	ug/L	0.00
Spiked Amount	50.000	Range 70 - 125	Recovery =	97.900%		
26) 1,2-Dichloroethane-d4	4.937	65	280852	51.471	ug/L	0.00
Spiked Amount	50.000	Range 70 - 125	Recovery =	102.940%		
32) Benzene-d6	4.953	84	867788	48.446	ug/L	0.00
Spiked Amount	50.000	Range 70 - 125	Recovery =	96.900%		
36) 1,2-Dichloropropane-d6	5.982	67	291445	51.096	ug/L	0.00
Spiked Amount	50.000	Range 70 - 120	Recovery =	102.200%		
41) Toluene-d8	7.239	98	744085	45.811	ug/L	0.00
Spiked Amount	50.000	Range 80 - 120	Recovery =	91.620%		
43) trans-1,3-Dichloroprop...	7.551	79	121296	45.778	ug/L	0.00
Spiked Amount	50.000	Range 60 - 125	Recovery =	91.560%		
47) 2-Hexanone-d5	8.024	63	107801	89.504	ug/L	0.00
Spiked Amount	100.000	Range 45 - 130	Recovery =	89.500%		
56) 1,1,2,2-Tetrachloroeth...	10.146	84	332553	50.178	ug/L	0.00
Spiked Amount	50.000	Range 65 - 120	Recovery =	100.360%		
66) 1,2-Dichlorobenzene-d4	11.554	152	292794	55.433	ug/L	0.00
Spiked Amount	50.000	Range 80 - 120	Recovery =	110.860%		
Target Compounds						
20) cis-1,2-Dichloroethene	3.812	96	15824	3.364	ug/L	Qvalue 98
-----						

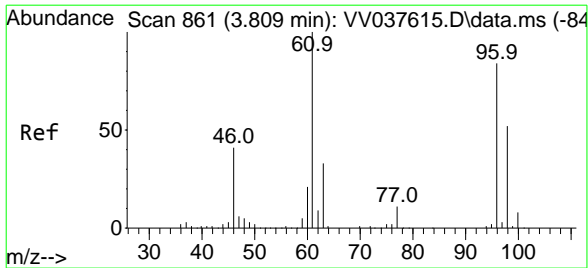
(#) = qualifier out of range (m) = manual integration (+) = signals summed

Data Path : Z:\voasrv\HPCHEM1\MSVOA\_V\DATA\VV092724\  
 Data File : VV037639.D  
 Acq On : 28 Sep 2024 03:27  
 Operator : SY/MD  
 Sample : VIBLK392  
 Misc : 5mL/MSVOA\_V/WATER  
 ALS Vial : 1 Sample Multiplier: 1

Instrument :  
 MSVOA\_V  
 ClientSampleId :  
 VIBLK392

Quant Time: Sep 28 04:24:22 2024  
 Quant Method : Z:\voasrv\HPCHEM1\MSVOA\_V\Method\SFAMVLM092624WMA.M  
 Quant Title : VOC Analysis  
 QLast Update : Sat Sep 28 00:49:19 2024  
 Response via : Initial Calibration





cis-1,2-Dichloroethene  
 Concen: 3.364 ug/L  
 RT: 3.812 min Scan# 86  
 Delta R.T. 0.003 min  
 Lab File: VV037639.D  
 Acq: 28 Sep 2024 03:27

Instrument : MSVOA\_V  
 ClientSampleId : VIBLK392

Tgt Ion:	96	Resp:	15824
Ion Ratio	Lower	Upper	
96	100		
61	121.7	85.0	157.8
98	58.8	44.2	82.0

