

Data Path : Z:\VOASRV\HPCHEM1\MSVOA V\DATA\VV092818\  
 Data File : VV007986.D  
 Acq On : 29 Sep 2018 06:23  
 Operator : SY/MD  
 Sample : J5062-14DL 4X  
 Misc : 25.0 mL/MSVOA V/WATER  
 ALS Vial : 46 Sample Multiplier: 1

Instrument :  
 MSVOA\_V  
 ClientSampled :  
 GAC14DL

Quant Time: Oct 01 04:58:56 2018  
 Quant Method : Z:\VOASRV\HPCHEM1\MSVOA\_V\METHOD\SOMVTR092718WMA.M  
 Quant Title : TRACE VOA SOM01.0  
 QLast Update : Mon Oct 01 04:55:39 2018  
 Response via : Initial Calibration

Internal Standards	R.T.	QIon	Response	Conc	Units	Dev(Min)
1) 1,4-Difluorobenzene	5.67	114	89840	5.00	ug/L	0.00
28) Chlorobenzene-d5	8.90	117	86784	5.00	ug/L	0.00
60) 1,4-Dichlorobenzene-d4	11.30	152	43331	5.00	ug/L	0.00

## System Monitoring Compounds

4) Vinyl Chloride-d3	1.32	65	20135	4.18	ug/L	0.00
Spiked Amount	5.000	Range	40 - 130	Recovery	=	83.60%
7) Chloroethane-d5	1.58	69	17690	4.25	ug/L	0.00
Spiked Amount	5.000	Range	65 - 130	Recovery	=	85.00%
11) 1,1-Dichloroethene-d2	2.13	63	31158	2.86	ug/L	0.00
Spiked Amount	5.000	Range	60 - 125	Recovery	=	57.20%#
20) 2-Butanone-d5	3.99	46	59432	41.03	ug/L	0.03
Spiked Amount	50.000	Range	40 - 130	Recovery	=	82.06%
24) Chloroform-d	4.41	84	48551	4.43	ug/L	0.00
Spiked Amount	5.000	Range	70 - 125	Recovery	=	88.60%
26) 1,2-Dichloroethane-d4	5.09	65	26072	4.32	ug/L	0.00
Spiked Amount	5.000	Range	70 - 130	Recovery	=	86.40%
32) Benzene-d6	5.10	84	91444	4.41	ug/L	0.00
Spiked Amount	5.000	Range	70 - 125	Recovery	=	88.20%
36) 1,2-Dichloropropane-d6	6.12	67	29407	4.48	ug/L	0.00
Spiked Amount	5.000	Range	60 - 140	Recovery	=	89.60%
41) Toluene-d8	7.36	98	84900	4.02	ug/L	0.00
Spiked Amount	5.000	Range	70 - 130	Recovery	=	80.40%
43) trans-1,3-Dichloropropene-	7.67	79	9396	3.72	ug/L	0.00
Spiked Amount	5.000	Range	55 - 130	Recovery	=	74.40%
46) 2-Hexanone-d5	8.14	63	49071	43.96	ug/L	0.00
Spiked Amount	50.000	Range	45 - 130	Recovery	=	87.92%
57) 1,1,2,2-Tetrachloroethane-	10.27	84	22553	4.45	ug/L	0.00
Spiked Amount	5.000	Range	65 - 120	Recovery	=	89.00%
64) 1,2-Dichlorobenzene-d4	11.68	152	37552	4.48	ug/L	0.00
Spiked Amount	5.000	Range	80 - 120	Recovery	=	89.60%

## Target Compounds

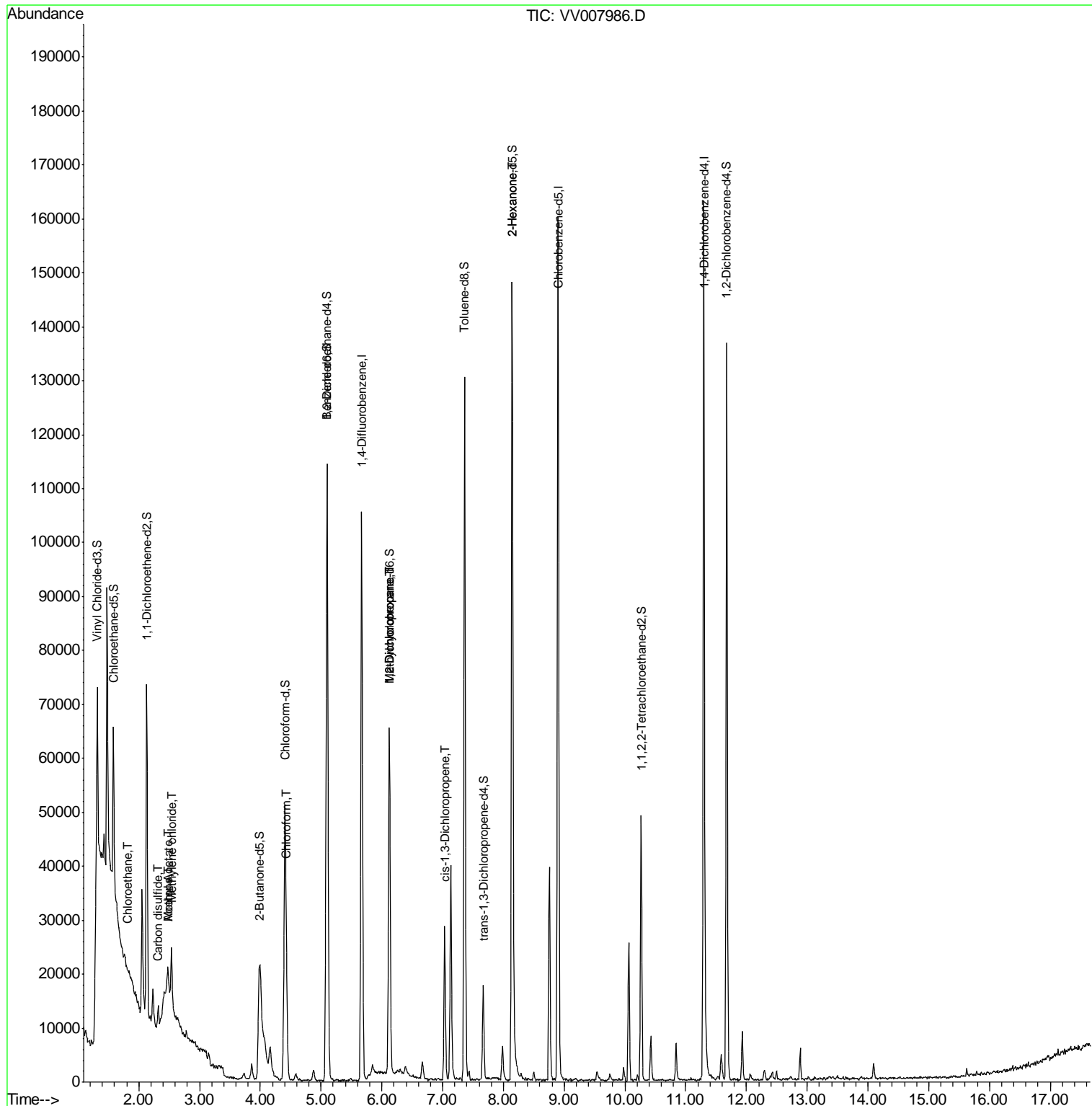
Target Compounds	R.T.	QIon	Response	Conc	Units	Ovalue
8) Chloroethane	1.82	64	447	0.103	ug/L #	50
13) Acetone	2.48	43	7882	7.468	ug/L	49
14) Carbon disulfide	2.32	76	5712	0.355	ug/L #	91
15) Methyl Acetate	2.48	43	10025	3.714	ug/L	94
16) Methylene chloride	2.54	84	4517	0.685	ug/L	92
25) Chloroform	4.43	83	10041	0.831	ug/L	95
35) Methylcyclohexane	6.12	83	7328	0.687	ug/L #	18
37) 1,2-Dichloropropane	6.12	63	3318	0.523	ug/L #	87
39) cis-1,3-Dichloropropene	7.03	75	635	0.075	ug/L	83
48) 2-Hexanone	8.14	43	7408	2.673	ug/L #	71

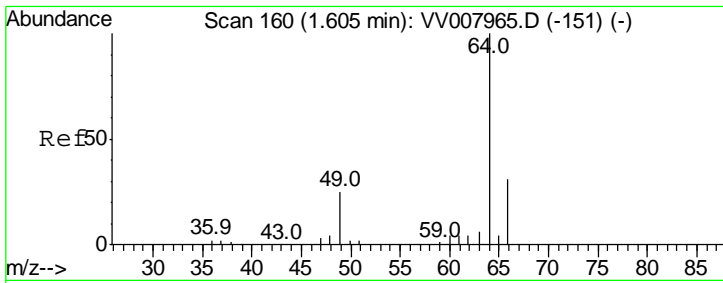
(#) = qualifier out of range (m) = manual integration (+) = signals summed

Data Path : Z:\VOASRV\HPCHEM1\MSVOA V\DATA\VV092818\  
 Data File : VV007986.D  
 Acq On : 29 Sep 2018 06:23  
 Operator : SY/MD  
 Sample : J5062-14DL 4X  
 Misc : 25.0 mL/MSVOA V/WATER  
 ALS Vial : 46 Sample Multiplier: 1

Instrument :  
 MSVOA\_V  
 Client Sampled :  
 GAC14DL

Quant Time: Oct 01 04:58:56 2018  
 Quant Method : Z:\VOASRV\HPCHEM1\MSVOA\_V\METHOD\SOMVTR092718WMA.M  
 Quant Title : TRACE VOA SOM01.0  
 QLast Update : Mon Oct 01 04:55:39 2018  
 Response via : Initial Calibration

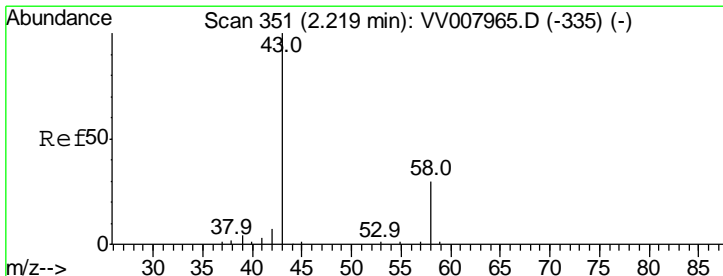
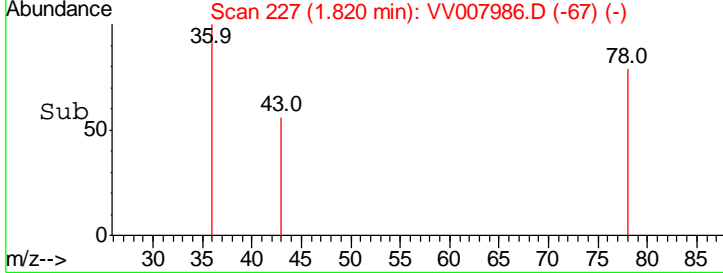
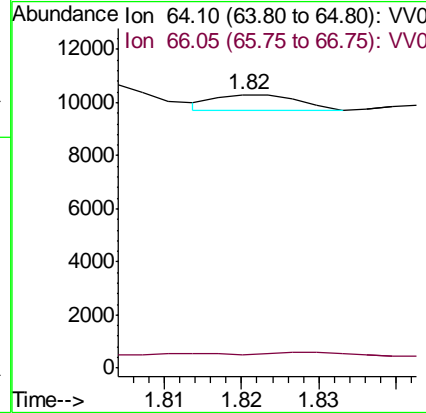
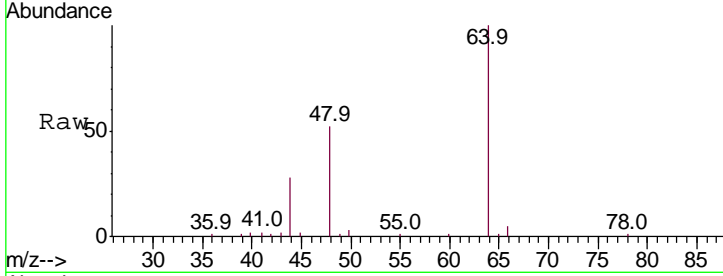




#8  
 Chloroethane  
 Concen: 0.103 ug/L  
 RT: 1.82 min Scan# 227  
 Delta R.T. 0.22 min  
 Lab File: VV007986.D  
 Acq: 29 Sep 2018 06:23

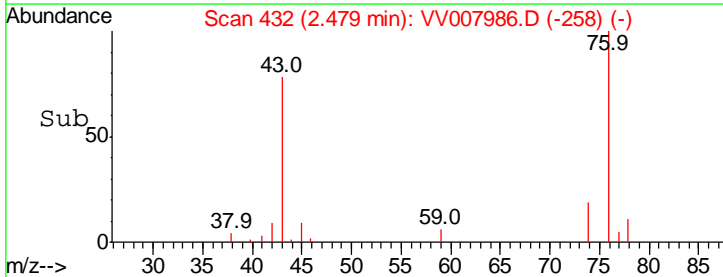
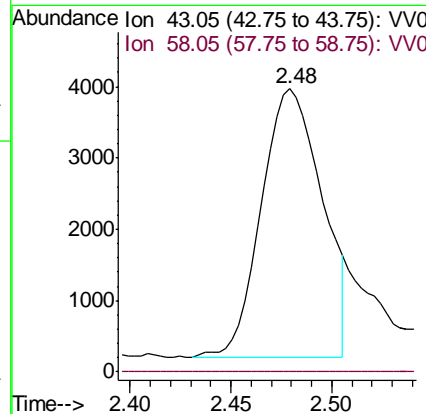
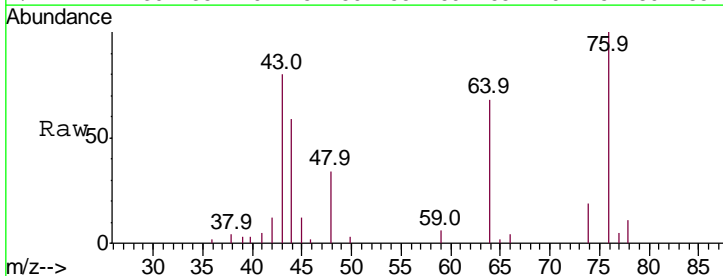
Instrument :  
 MSVOA\_V  
 ClientSampled :  
 GAC14DL

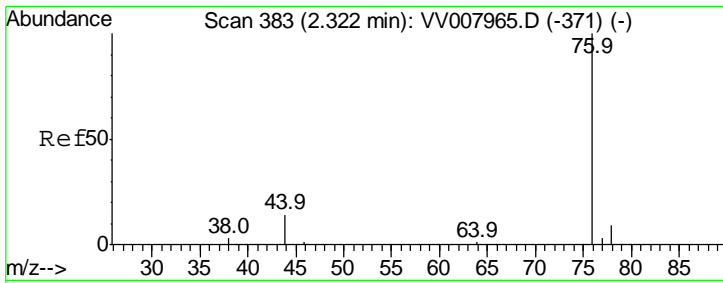
Tgt Ion: 64 Resp: 447  
 Ion Ratio Lower Upper  
 64 100  
 66 4.9 23.1 42.9#



#13  
 Acetone  
 Concen: 7.468 ug/L  
 RT: 2.48 min Scan# 432  
 Delta R.T. 0.26 min  
 Lab File: VV007986.D  
 Acq: 29 Sep 2018 06:23

Tgt Ion: 43 Resp: 7882  
 Ion Ratio Lower Upper  
 43 100  
 58 2.9 0.0 62.0

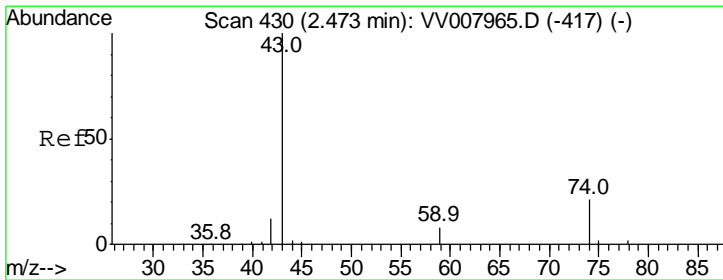
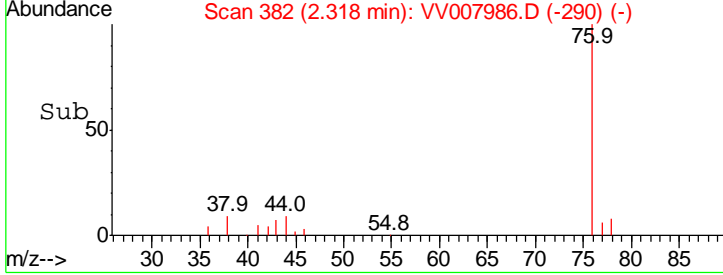
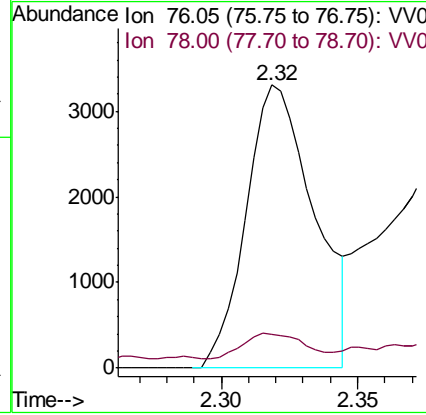
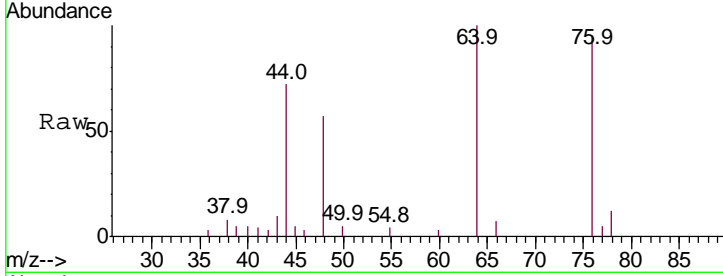




#14  
 Carbon disulfide  
 Concen: 0.355 ug/L  
 RT: 2.32 min Scan# 382  
 Delta R.T. -0.00 min  
 Lab File: VV007986.D  
 Acq: 29 Sep 2018 06:23

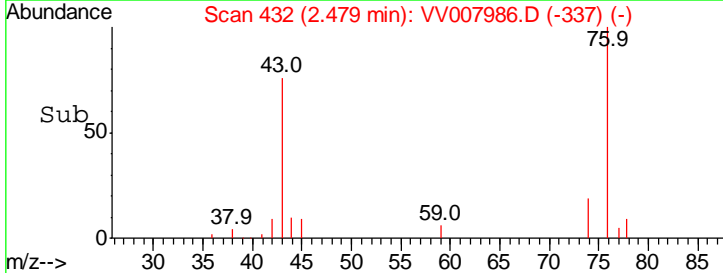
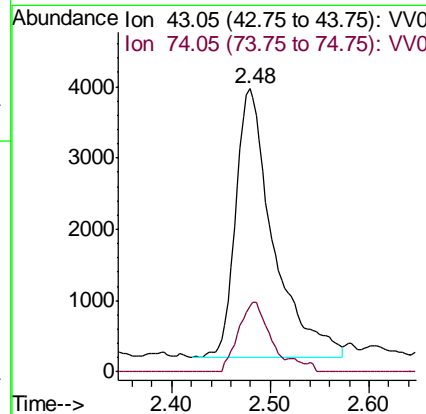
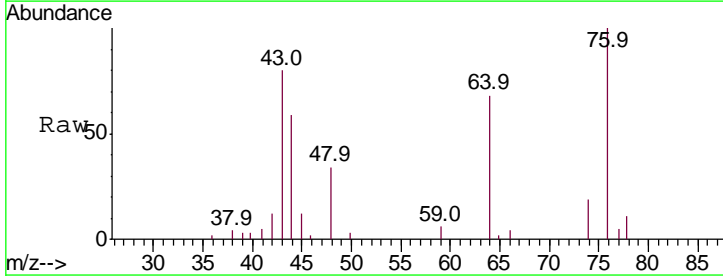
Instrument :  
 MSVOA\_V  
 ClientSampled :  
 GAC14DL

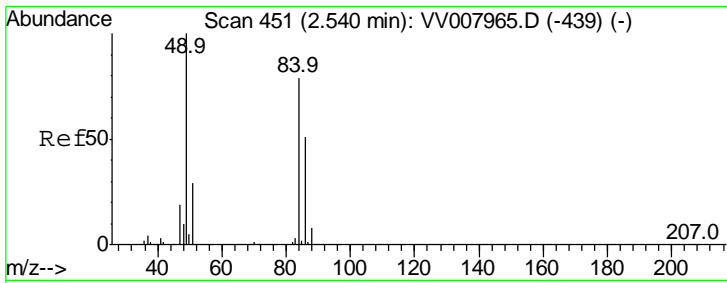
Tgt Ion	Resp	Lower	Upper
76	100		
78	12.1	7.2	10.8#



#15  
 Methyl Acetate  
 Concen: 3.714 ug/L  
 RT: 2.48 min Scan# 432  
 Delta R.T. 0.01 min  
 Lab File: VV007986.D  
 Acq: 29 Sep 2018 06:23

Tgt Ion	Resp	Lower	Upper
43	100		
74	21.3	19.5	29.3

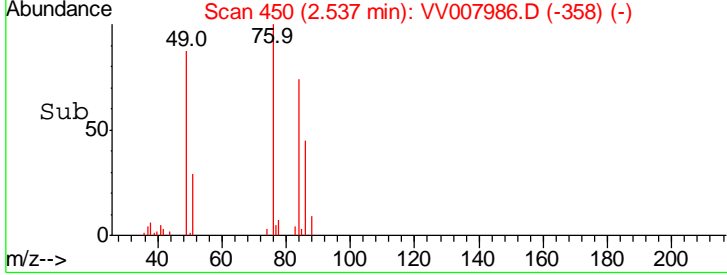
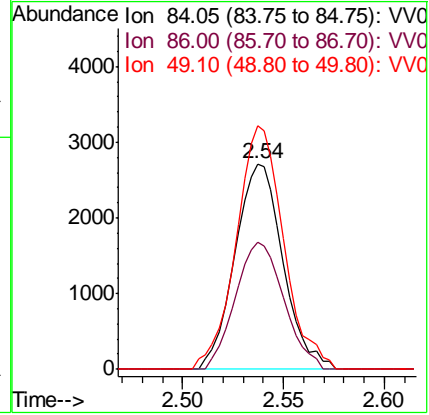
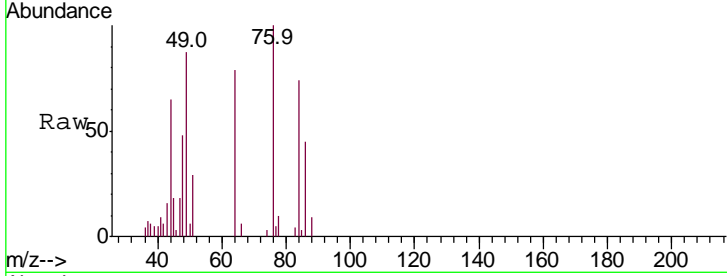




#16  
 Methylene chloride  
 Concen: 0.685 ug/L  
 RT: 2.54 min Scan# 450  
 Delta R.T. -0.00 min  
 Lab File: VV007986.D  
 Acq: 29 Sep 2018 06:23

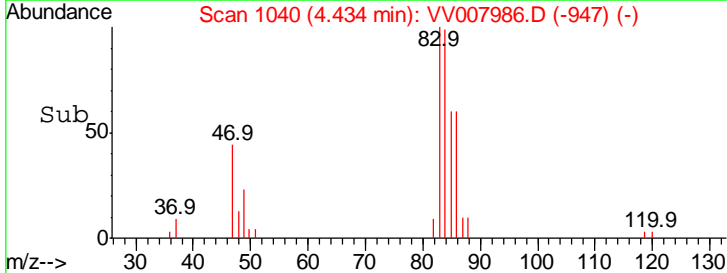
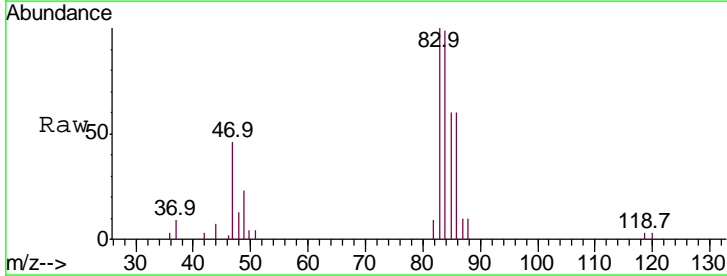
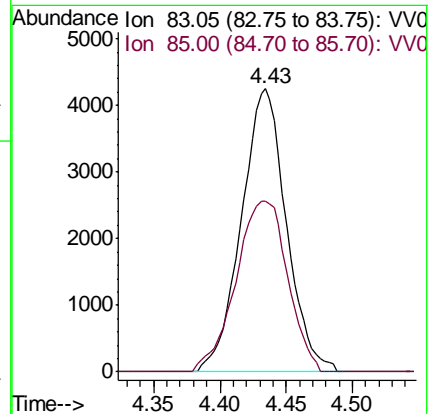
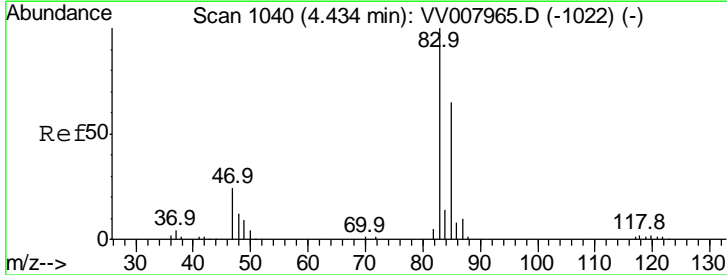
**Instrument :**  
 MSVOA\_V  
**ClientSampled :**  
 GAC14DL

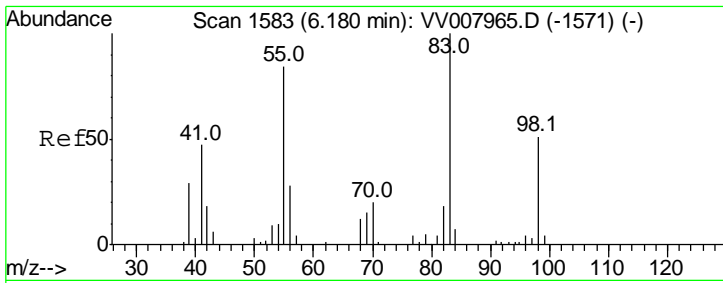
Tgt Ion	Resp	Lower	Upper
84	100		
86	61.6	47.3	87.8
49	118.4	90.0	167.2



#25  
 Chloroform  
 Concen: 0.831 ug/L  
 RT: 4.43 min Scan# 1040  
 Delta R.T. 0.00 min  
 Lab File: VV007986.D  
 Acq: 29 Sep 2018 06:23

Tgt Ion	Resp	Lower	Upper
83	100		
85	60.5	44.8	83.2

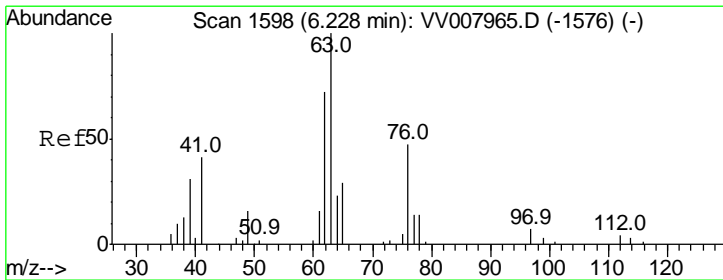
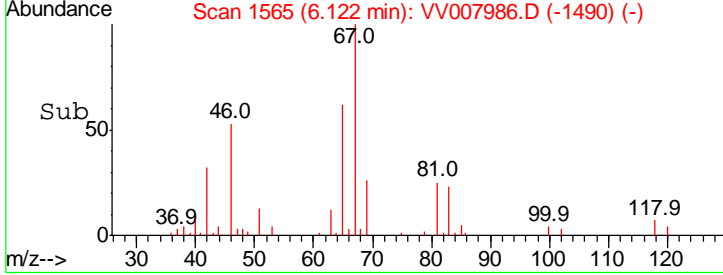
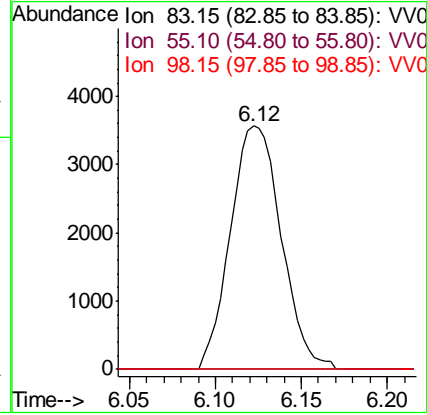
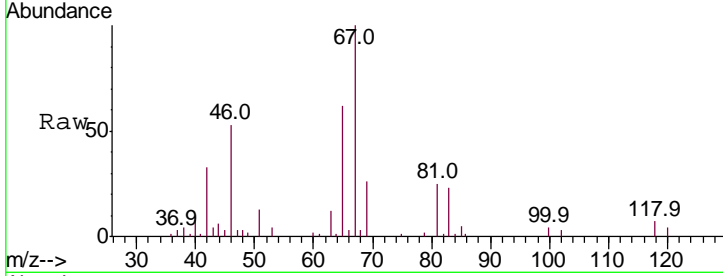




#35  
 Methylcyclohexane  
 Concen: 0.687 ug/L  
 RT: 6.12 min Scan# 1565  
 Delta R.T. -0.06 min  
 Lab File: VV007986.D  
 Acq: 29 Sep 2018 06:23

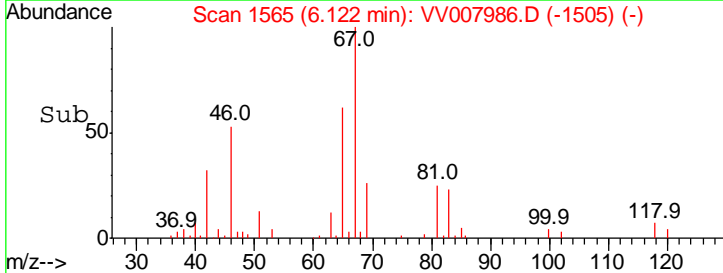
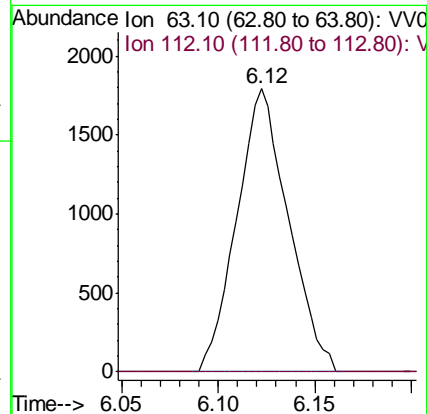
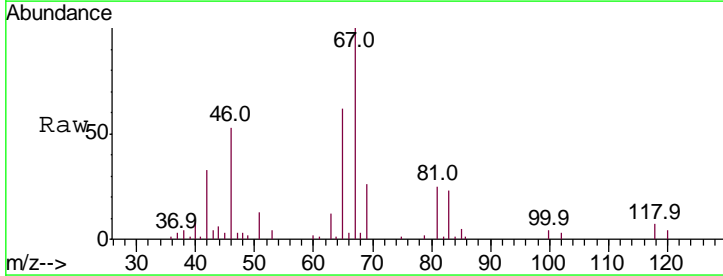
**Instrument :**  
 MSVOA\_V  
**ClientSampled :**  
 GAC14DL

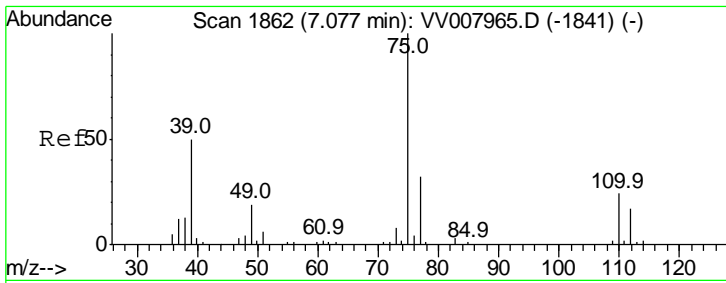
Tgt Ion	Resp	Lower	Upper
83	7328		
55	0.0	62.2	93.2#
98	0.0	38.0	57.0#



#37  
 1,2-Dichloropropane  
 Concen: 0.523 ug/L  
 RT: 6.12 min Scan# 1565  
 Delta R.T. -0.11 min  
 Lab File: VV007986.D  
 Acq: 29 Sep 2018 06:23

Tgt Ion	Resp	Lower	Upper
63	3318		
112	0.0	3.4	5.0#

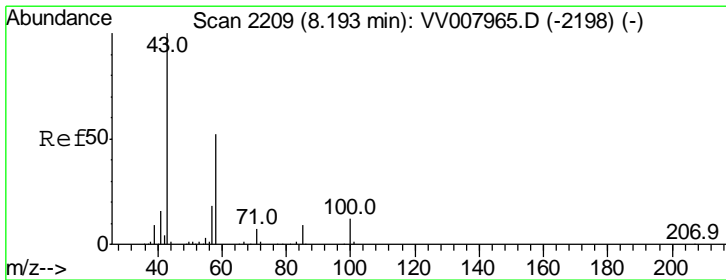
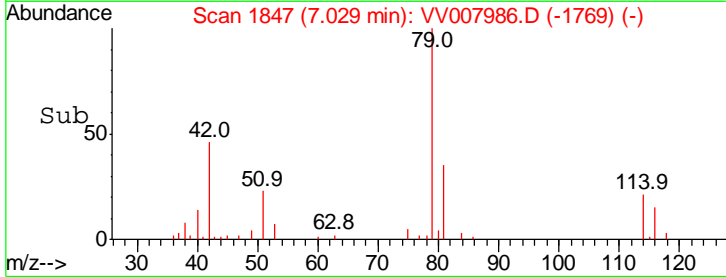
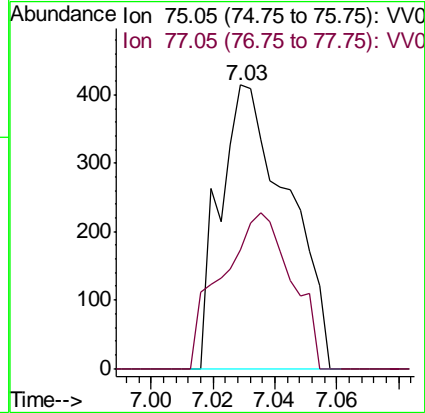
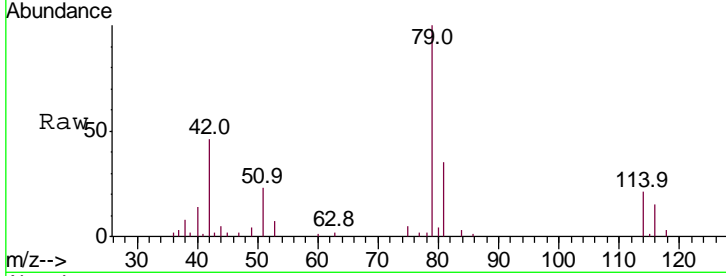




#39  
 cis-1,3-Dichloropropene  
 Concen: 0.075 ug/L  
 RT: 7.03 min Scan# 1847  
 Delta R.T. -0.05 min  
 Lab File: VV007986.D  
 Acq: 29 Sep 2018 06:23

Instrument :  
 MSVOA\_V  
 ClientSampleID :  
 GAC14DL

Tgt Ion: 75 Resp: 635  
 Ion Ratio Lower Upper  
 75 100  
 77 42.0 22.9 42.5



#48  
 2-Hexanone  
 Concen: 2.673 ug/L  
 RT: 8.14 min Scan# 2194  
 Delta R.T. -0.05 min  
 Lab File: VV007986.D  
 Acq: 29 Sep 2018 06:23

Tgt Ion: 43 Resp: 7408  
 Ion Ratio Lower Upper  
 43 100  
 58 31.7 41.9 62.9#  
 57 30.2 14.3 21.5#  
 100 0.3 9.2 13.8#

