

Data Path : Z:\VOASRV\HPCHEM1\MSVOA V\DATA\VV092818\  
 Data File : VV007982.D  
 Acq On : 29 Sep 2018 04:34  
 Operator : SY/MD  
 Sample : J5159-06  
 Misc : 25.0 mL/MSVOA V/WATER  
 ALS Vial : 42 Sample Multiplier: 1

Instrument :  
 MSVOA\_V  
 ClientSampleId :  
 GAC92

Quant Time: Oct 01 06:53:10 2018  
 Quant Method : Z:\VOASRV\HPCHEM1\MSVOA\_V\METHOD\SOMVTR092718WMA.M  
 Quant Title : TRACE VOA SOM01.0  
 QLast Update : Mon Oct 01 04:55:39 2018  
 Response via : Initial Calibration

Internal Standards	R.T.	QIon	Response	Conc	Units	Dev(Min)
1) 1,4-Difluorobenzene	5.67	114	84177	5.00	ug/L	0.00
28) Chlorobenzene-d5	8.90	117	82401	5.00	ug/L	0.00
60) 1,4-Dichlorobenzene-d4	11.30	152	39373	5.00	ug/L	0.00

System Monitoring Compounds

4) Vinyl Chloride-d3	1.32	65	17269	3.83	ug/L	0.00
Spiked Amount	5.000	Range	40 - 130	Recovery	=	76.60%
7) Chloroethane-d5	1.59	69	17325	4.44	ug/L	0.00
Spiked Amount	5.000	Range	65 - 130	Recovery	=	88.80%
11) 1,1-Dichloroethene-d2	2.14	63	29200	2.87	ug/L	0.00
Spiked Amount	5.000	Range	60 - 125	Recovery	=	57.40%#
20) 2-Butanone-d5	3.97	46	65973	48.61	ug/L	0.00
Spiked Amount	50.000	Range	40 - 130	Recovery	=	97.22%
24) Chloroform-d	4.41	84	46935	4.57	ug/L	0.00
Spiked Amount	5.000	Range	70 - 125	Recovery	=	91.40%
26) 1,2-Dichloroethane-d4	5.09	65	25934	4.59	ug/L	0.00
Spiked Amount	5.000	Range	70 - 130	Recovery	=	91.80%
32) Benzene-d6	5.10	84	86583	4.40	ug/L	0.00
Spiked Amount	5.000	Range	70 - 125	Recovery	=	88.00%
36) 1,2-Dichloropropane-d6	6.12	67	28620	4.59	ug/L	0.00
Spiked Amount	5.000	Range	60 - 140	Recovery	=	91.80%
41) Toluene-d8	7.36	98	80106	4.00	ug/L	0.00
Spiked Amount	5.000	Range	70 - 130	Recovery	=	80.00%
43) trans-1,3-Dichloropropene-	7.67	79	8688	3.62	ug/L	0.00
Spiked Amount	5.000	Range	55 - 130	Recovery	=	72.40%
46) 2-Hexanone-d5	8.14	63	49191	46.41	ug/L	0.00
Spiked Amount	50.000	Range	45 - 130	Recovery	=	92.82%
57) 1,1,2,2-Tetrachloroethane-	10.27	84	21416	4.45	ug/L	0.00
Spiked Amount	5.000	Range	65 - 120	Recovery	=	89.00%
64) 1,2-Dichlorobenzene-d4	11.68	152	34944	4.59	ug/L	0.00
Spiked Amount	5.000	Range	80 - 120	Recovery	=	91.80%

Target Compounds

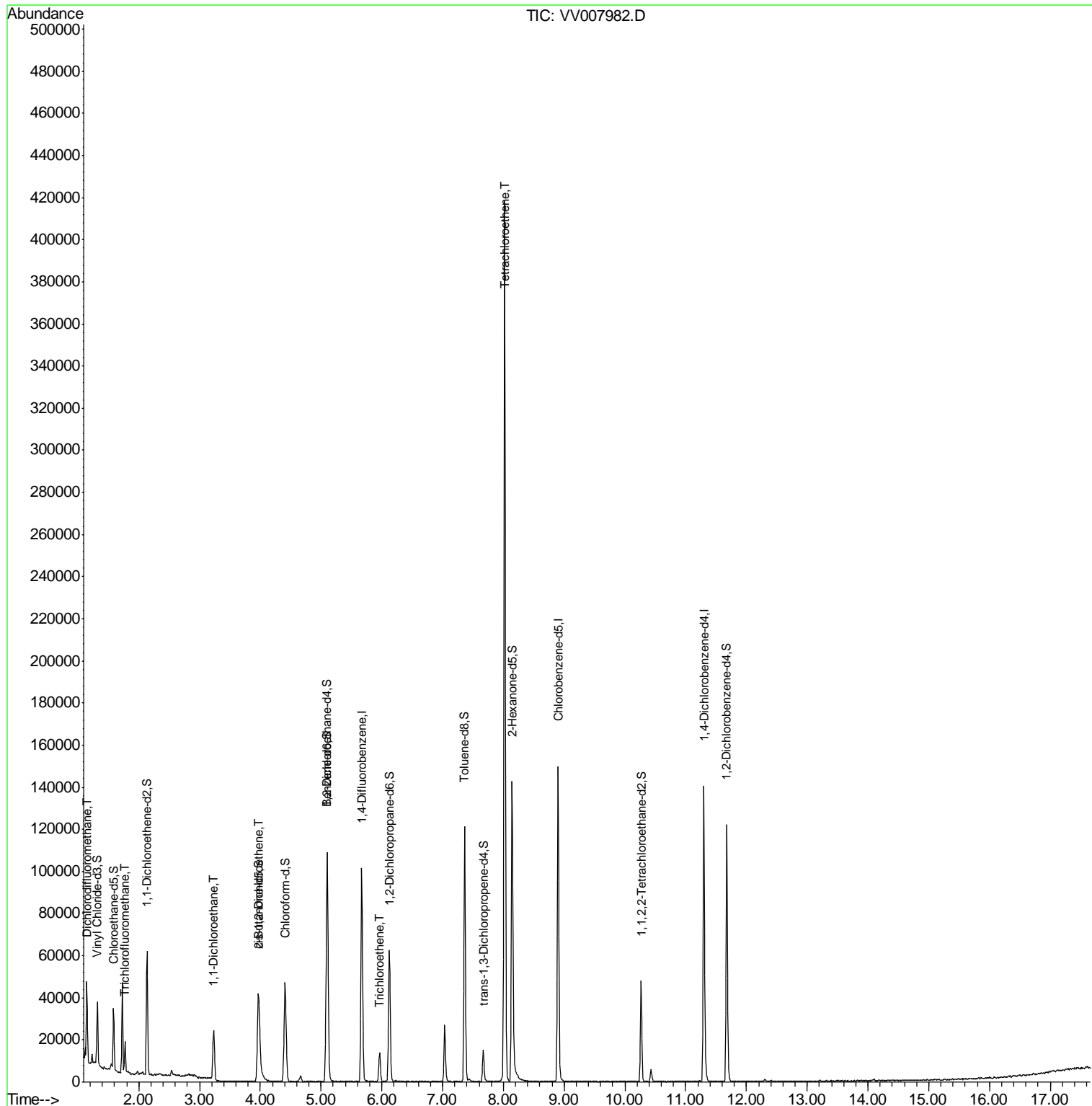
Target Compounds	R.T.	QIon	Response	Conc	Units	Ovalue
2) Dichlorodifluoromethane	1.14	85	8850	1.253	ug/L	96
9) Trichlorofluoromethane	1.78	101	7957	0.725	ug/L	100
19) 1,1-Dichloroethane	3.23	63	24007	2.294	ug/L	98
22) cis-1,2-Dichloroethene	3.96	96	4598	0.740	ug/L	90
34) Trichloroethene	5.96	95	4493	0.665	ug/L	92
47) Tetrachloroethene	8.02	164	95452	15.246	ug/L	98

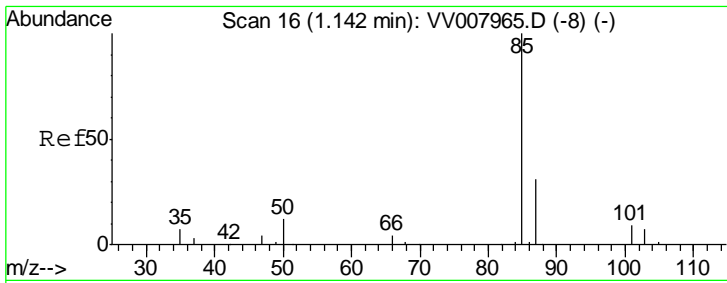
(#) = qualifier out of range (m) = manual integration (+) = signals summed

Data Path : Z:\VOASRV\HPCHEM1\MSVOA V\DATA\VV092818\  
 Data File : VV007982.D  
 Acq On : 29 Sep 2018 04:34  
 Operator : SY/MD  
 Sample : J5159-06  
 Misc : 25.0 mL/MSVOA V/WATER  
 ALS Vial : 42 Sample Multiplier: 1

Instrument :  
 MSVOA\_V  
 ClientSampleId :  
 GAC92

Quant Time: Oct 01 06:53:10 2018  
 Quant Method : Z:\VOASRV\HPCHEM1\MSVOA\_V\METHOD\SOMVTR092718WMA.M  
 Quant Title : TRACE VOA SOM01.0  
 QLast Update : Mon Oct 01 04:55:39 2018  
 Response via : Initial Calibration

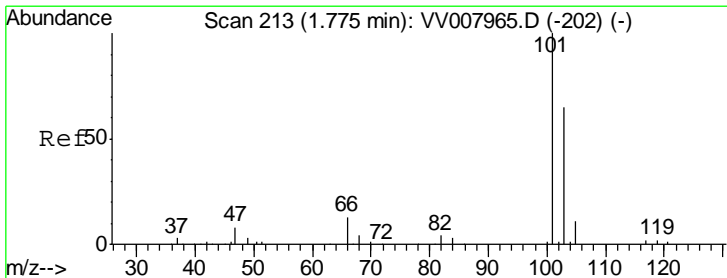
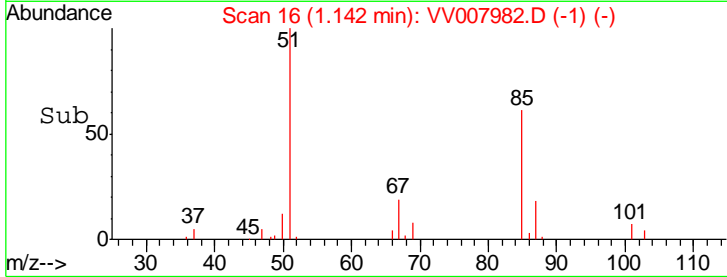
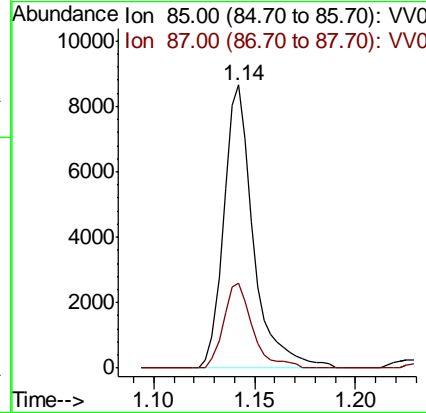
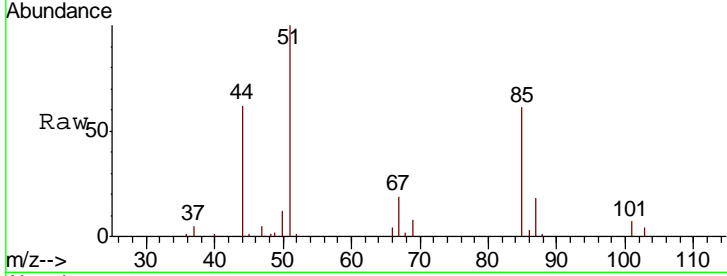




#2  
 Dichlorodifluoromethane  
 Concen: 1.253 ug/L  
 RT: 1.14 min Scan# 16  
 Delta R.T. 0.00 min  
 Lab File: VV007982.D  
 Acq: 29 Sep 2018 04:34

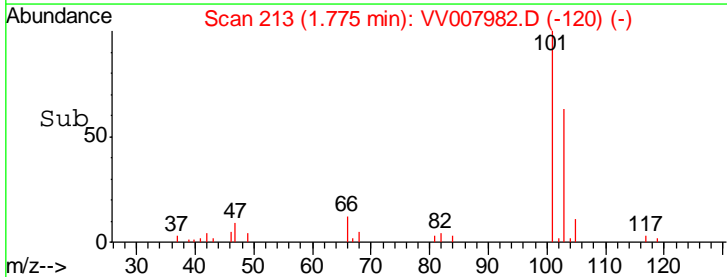
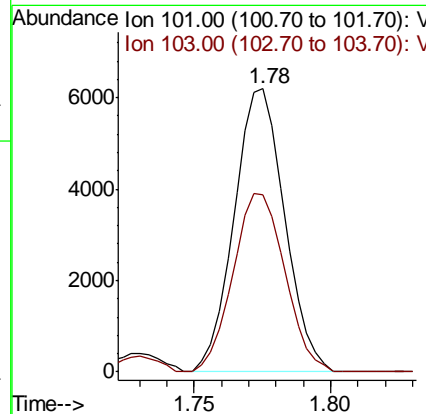
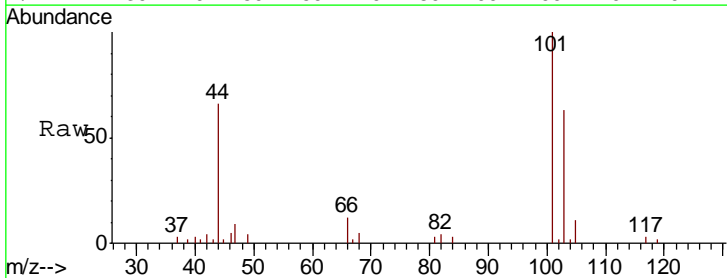
**Instrument :**  
 MSVOA\_V  
**ClientSampled :**  
 GAC92

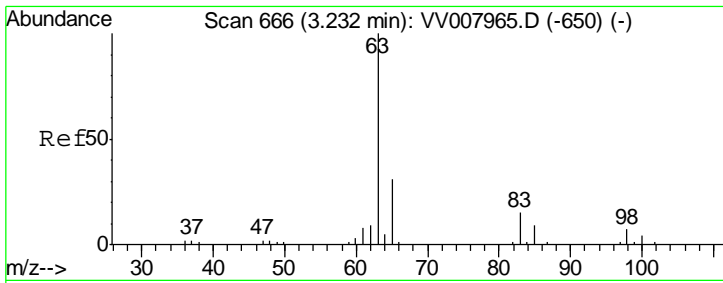
Tgt Ion	Resp	Lower	Upper
85	8850		
87	29.2	25.2	37.8



#9  
 Trichlorofluoromethane  
 Concen: 0.725 ug/L  
 RT: 1.78 min Scan# 213  
 Delta R.T. 0.00 min  
 Lab File: VV007982.D  
 Acq: 29 Sep 2018 04:34

Tgt Ion	Resp	Lower	Upper
101	7957		
103	64.8	51.5	77.3

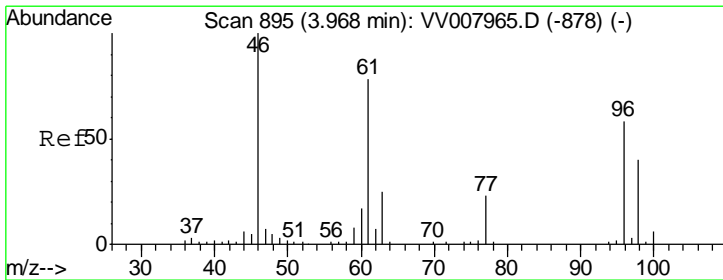
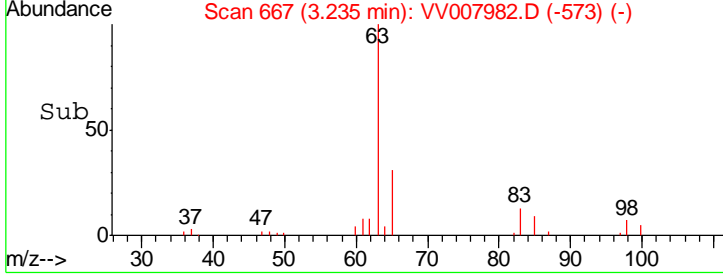
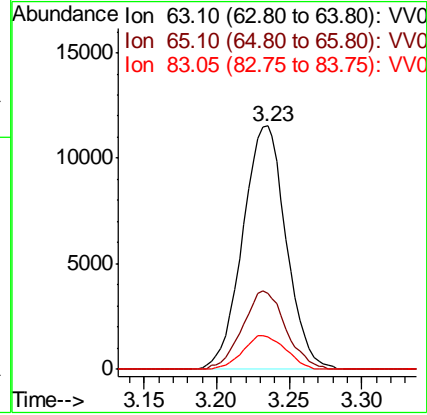
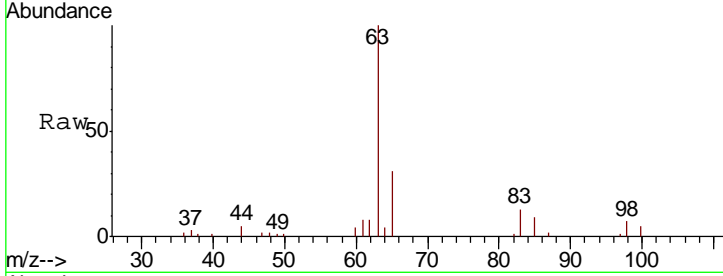




#19  
 1,1-Dichloroethane  
 Concen: 2.294 ug/L  
 RT: 3.23 min Scan# 667  
 Delta R.T. 0.00 min  
 Lab File: VV007982.D  
 Acq: 29 Sep 2018 04:34

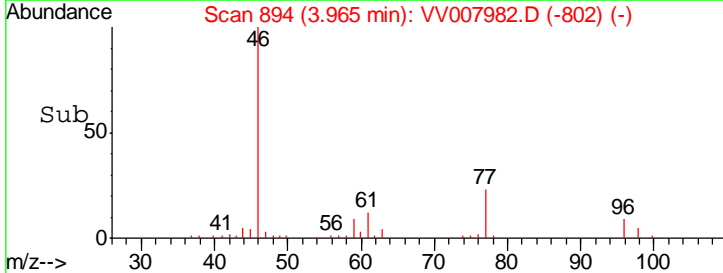
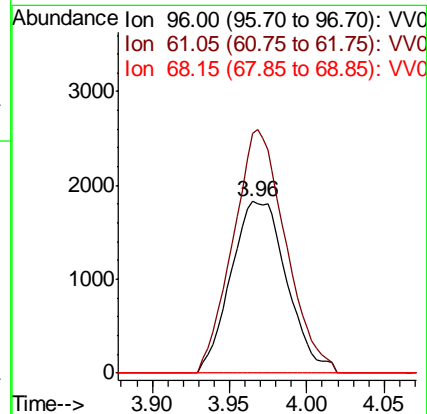
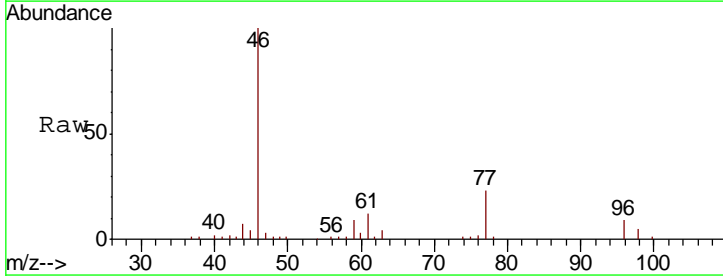
Instrument :  
 MSVOA\_V  
 ClientSampled :  
 GAC92

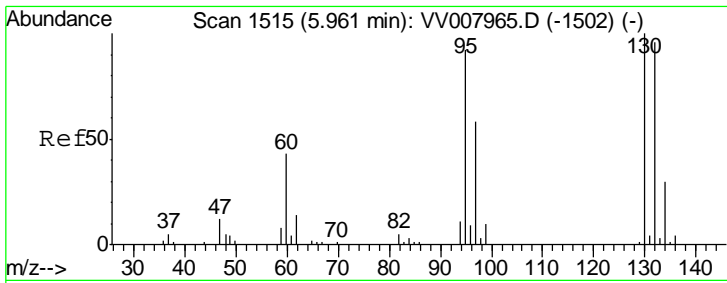
Tgt Ion	Resp	Lower	Upper
63	24007		
65	31.0	22.3	41.5
83	13.2	9.8	18.2



#22  
 cis-1,2-Dichloroethene  
 Concen: 0.740 ug/L  
 RT: 3.96 min Scan# 894  
 Delta R.T. -0.00 min  
 Lab File: VV007982.D  
 Acq: 29 Sep 2018 04:34

Tgt Ion	Resp	Lower	Upper
96	4598		
61	139.8	89.5	166.1
68	0.0	0.0	0.0

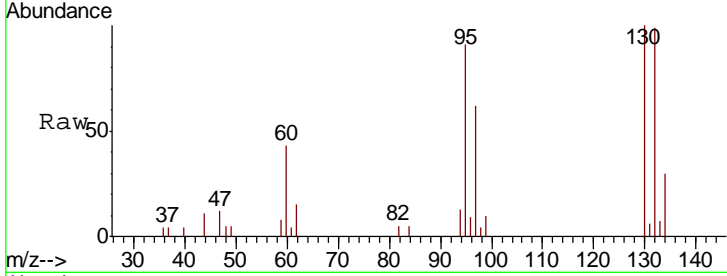




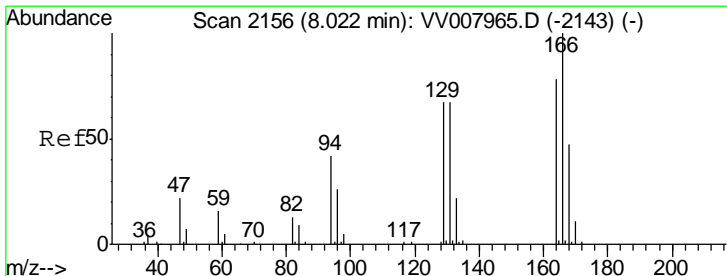
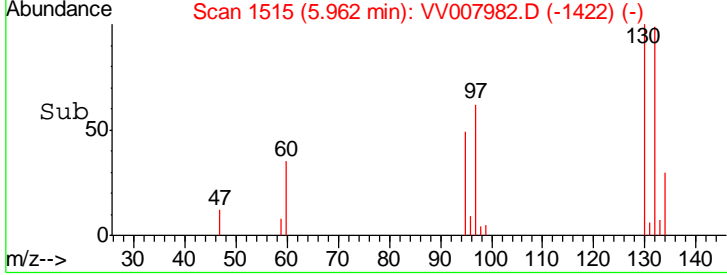
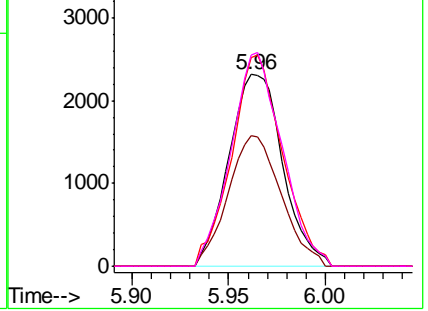
#34  
 Trichloroethene  
 Concen: 0.665 ug/L  
 RT: 5.96 min Scan# 1515  
 Delta R.T. 0.00 min  
 Lab File: VV007982.D  
 Acq: 29 Sep 2018 04:34

Instrument : MSVOA\_V  
 ClientSampled : GAC92

Tgt Ion	Resp	Lower	Upper
95	100		
97	67.9	43.6	81.0
132	109.0	69.9	129.9
130	110.2	71.7	133.3

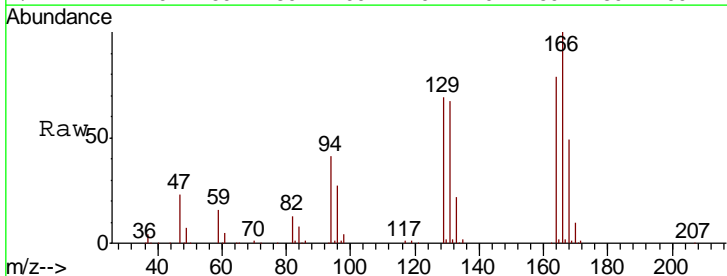


Abundance Ion 95.00 (94.70 to 95.70): VV007982.D (-1422) (-)  
 Ion 96.95 (96.65 to 97.65): VV007982.D (-1422) (-)  
 Ion 131.95 (131.65 to 132.65): VV007982.D (-1422) (-)  
 Ion 129.95 (129.65 to 130.65): VV007982.D (-1422) (-)



#47  
 Tetrachloroethene  
 Concen: 15.246 ug/L  
 RT: 8.02 min Scan# 2156  
 Delta R.T. 0.00 min  
 Lab File: VV007982.D  
 Acq: 29 Sep 2018 04:34

Tgt Ion	Resp	Lower	Upper
164	100		
129	87.1	59.2	110.0
131	85.1	57.1	106.1
166	126.7	88.6	164.6



Abundance Ion 163.90 (163.60 to 164.60): VV007982.D (-2063) (-)  
 Ion 128.95 (128.65 to 129.65): VV007982.D (-2063) (-)  
 Ion 130.95 (130.65 to 131.65): VV007982.D (-2063) (-)  
 Ion 165.90 (165.60 to 166.60): VV007982.D (-2063) (-)

