

Data Path : Z:\voasrv\HPCHEM1\MSVOA_V\Data\VW092821\
 Data File : VW022349.D
 Acq On : 27 Sep 2021 22:11
 Operator : SY/MD
 Sample : M3834-06ME
 Misc : 4.48g/5.0mL/100uL/5.0mL/MSVOA_V/MEOH
 ALS Vial : 17 Sample Multiplier: 1

Instrument :
 MSVOA_V
 ClientSampled :

Quant Time: Sep 28 02:46:49 2021
 Quant Method : Z:\voasrv\HPCHEM1\MSVOA_V\Method\SFAMVLM092721WMA.M
 Quant Title : VOC Analysis
 QLast Update : Tue Sep 28 02:38:12 2021
 Response via : Initial Calibration

Compound	R.T.	QIon	Response	Conc	Units	Dev(Min)

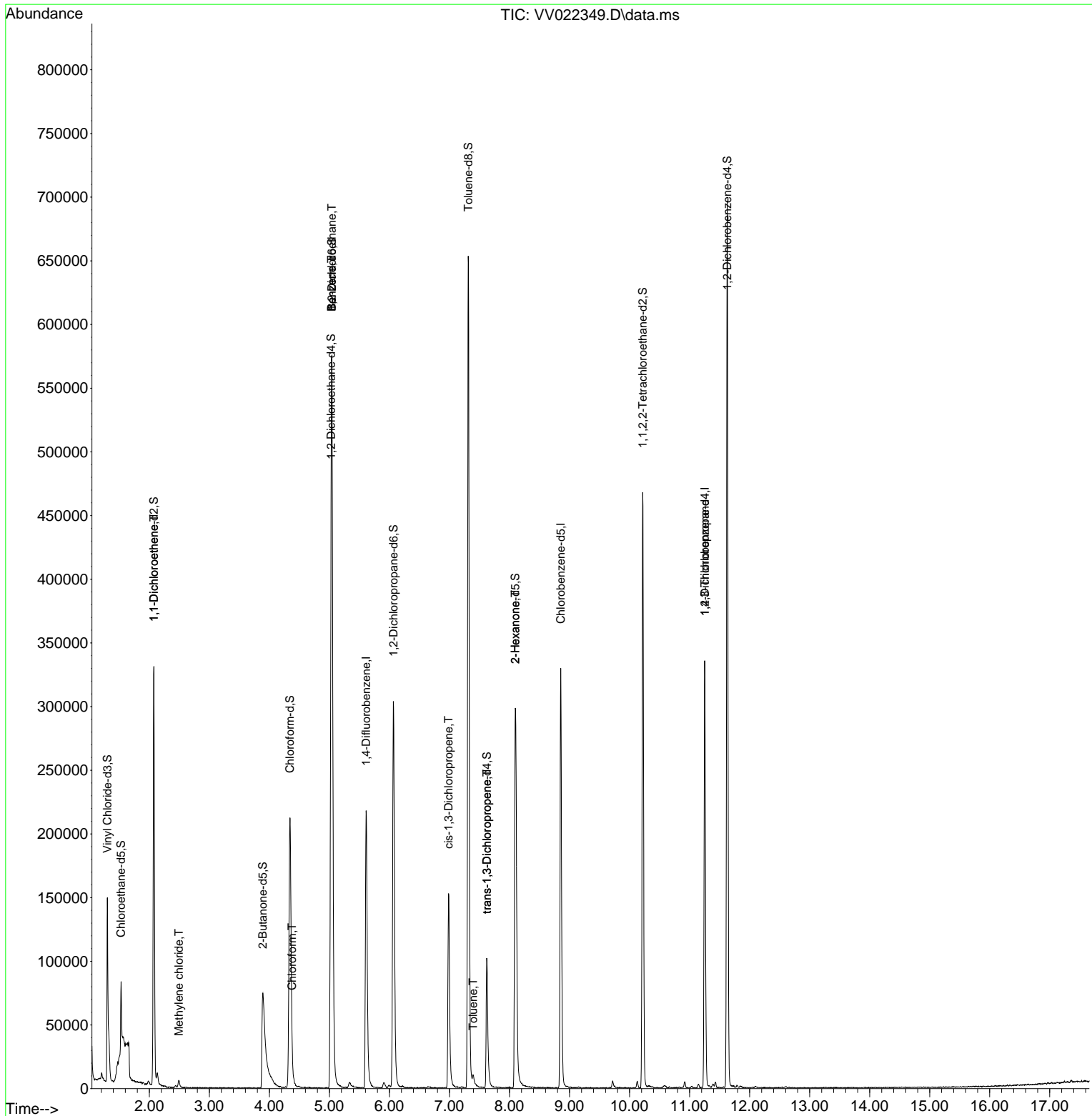
Internal Standards						
1) 1,4-Difluorobenzene	5.613	114	201065	50.000	ug/L	0.00
28) Chlorobenzene-d5	8.854	117	194559	50.000	ug/L	0.00
58) 1,4-Dichlorobenzene-d4	11.252	152	91294	50.000	ug/L	0.00
System Monitoring Compounds						
4) Vinyl Chloride-d3	1.301	65	130308	76.366	ug/L	0.00
Spiked Amount	50.000	Range 60 - 135	Recovery	=	152.740%#	
7) Chloroethane-d5	1.529	69	44479	32.956	ug/L	-0.03
Spiked Amount	50.000	Range 70 - 130	Recovery	=	65.920%#	
11) 1,1-Dichloroethene-d2	2.076	63	172476	58.137	ug/L	-0.03
Spiked Amount	50.000	Range 60 - 125	Recovery	=	116.280%	
21) 2-Butanone-d5	3.889	46	134627	111.795	ug/L	0.02
Spiked Amount	100.000	Range 40 - 130	Recovery	=	111.790%	
24) Chloroform-d	4.343	84	229848	74.598	ug/L	0.00
Spiked Amount	50.000	Range 70 - 125	Recovery	=	149.200%#	
26) 1,2-Dichloroethane-d4	5.027	65	148549	78.618	ug/L	0.00
Spiked Amount	50.000	Range 70 - 125	Recovery	=	157.240%#	
32) Benzene-d6	5.040	84	498048	81.372	ug/L	0.00
Spiked Amount	50.000	Range 70 - 125	Recovery	=	162.740%#	
36) 1,2-Dichloropropane-d6	6.066	67	158833	81.115	ug/L	0.00
Spiked Amount	50.000	Range 70 - 120	Recovery	=	162.240%#	
41) Toluene-d8	7.313	98	443153	79.104	ug/L	0.00
Spiked Amount	50.000	Range 80 - 120	Recovery	=	158.200%#	
43) trans-1,3-Dichloroprop...	7.622	79	66961	74.889	ug/L	0.00
Spiked Amount	50.000	Range 60 - 125	Recovery	=	149.780%#	
47) 2-Hexanone-d5	8.098	63	140138	176.130	ug/L	0.00
Spiked Amount	100.000	Range 45 - 130	Recovery	=	176.130%#	
56) 1,1,2,2-Tetrachloroeth...	10.220	84	231720	81.522	ug/L	0.00
Spiked Amount	50.000	Range 65 - 120	Recovery	=	163.040%#	
66) 1,2-Dichlorobenzene-d4	11.628	152	182779	90.037	ug/L	0.00
Spiked Amount	50.000	Range 80 - 120	Recovery	=	180.080%#	
Target Compounds						
						Qvalue
12) 1,1-Dichloroethene	2.076	96	1487	1.124	ug/L #	1
16) Methylene chloride	2.491	84	2274	1.234	ug/L	90
25) Chloroform	4.378	83	4018	1.417	ug/L	98
27) 1,2-Dichloroethane	5.040	62	2865	1.421	ug/L	98
33) Benzene	5.037	78	3885	0.654	ug/L	100
39) cis-1,3-Dichloropropene	6.986	75	3813	1.700	ug/L #	59
42) Toluene	7.394	91	6727	1.061	ug/L	86
44) trans-1,3-Dichloropropene	7.622	75	2899	1.354	ug/L #	79
48) 2-Hexanone	8.098	43	15863	9.742	ug/L #	69
61) 1,2,3-Trichloropropane	11.252	75	10561	6.201	ug/L #	66

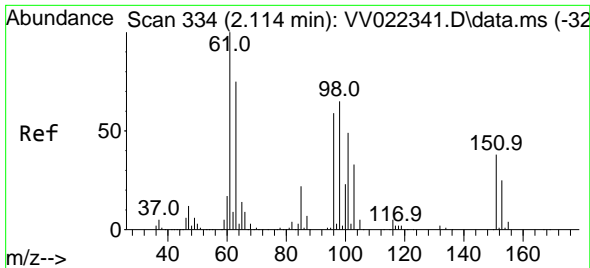
(#) = qualifier out of range (m) = manual integration (+) = signals summed

Data Path : Z:\voasrv\HPCHEM1\MSVOA_V\Data\VV092821\
 Data File : VV022349.D
 Acq On : 27 Sep 2021 22:11
 Operator : SY/MD
 Sample : M3834-06ME
 Misc : 4.48g/5.0mL/100uL/5.0mL/MSVOA_V/MEOH
 ALS Vial : 17 Sample Multiplier: 1

Instrument :
 MSVOA_V
 ClientSampled :

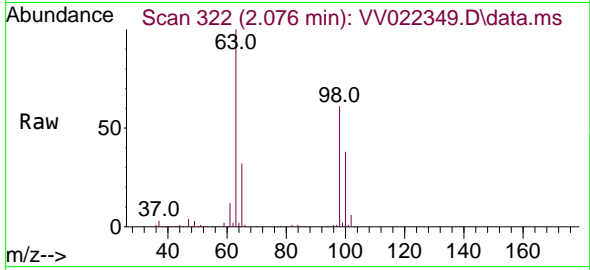
Quant Time: Sep 28 02:46:49 2021
 Quant Method : Z:\voasrv\HPCHEM1\MSVOA_V\Method\SFAMVLM092721WMA.M
 Quant Title : VOC Analysis
 QLast Update : Tue Sep 28 02:38:12 2021
 Response via : Initial Calibration



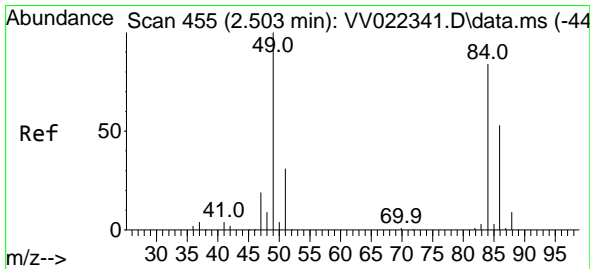
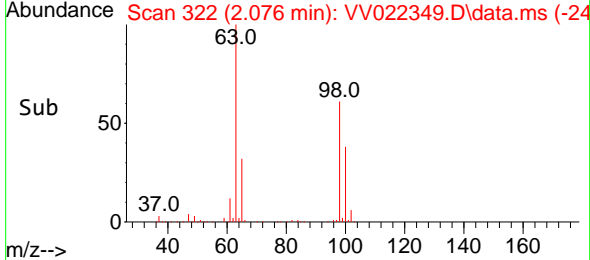
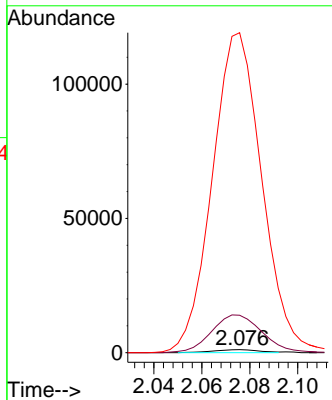


#12
 1,1-Dichloroethene
 Concen: 1.124 ug/L
 RT: 2.076 min Scan# 322
 Delta R.T. -0.038 min
 Lab File: VV022349.D
 Acq: 27 Sep 2021 22:11

Instrument :
 MSVOA_V
 ClientSampled :

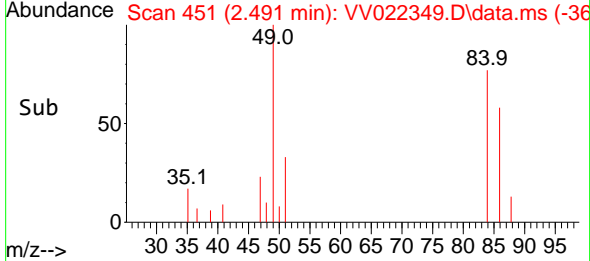
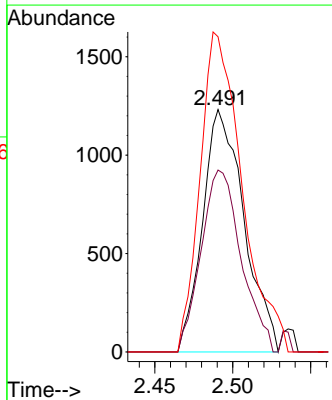
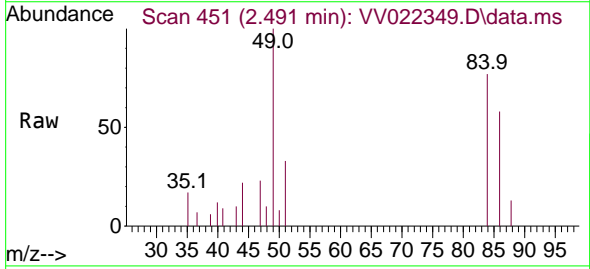


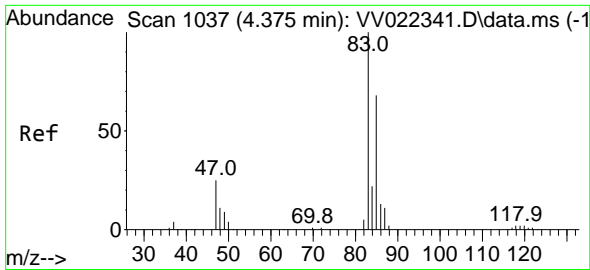
Tgt Ion: 96 Resp: 1487
 Ion Ratio Lower Upper
 96 100
 61 1215.8 124.4 231.0#
 63 10407.0 106.0 196.8#



#16
 Methylene chloride
 Concen: 1.234 ug/L
 RT: 2.491 min Scan# 451
 Delta R.T. -0.013 min
 Lab File: VV022349.D
 Acq: 27 Sep 2021 22:11

Tgt Ion: 84 Resp: 2274
 Ion Ratio Lower Upper
 84 100
 86 75.0 44.6 82.8
 49 130.0 85.3 158.3

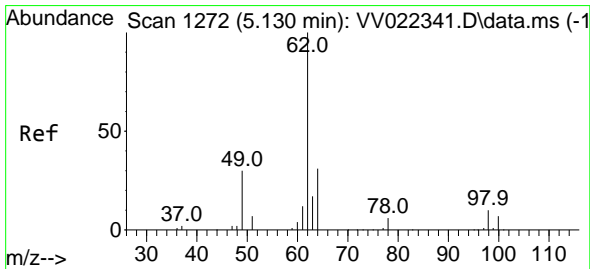
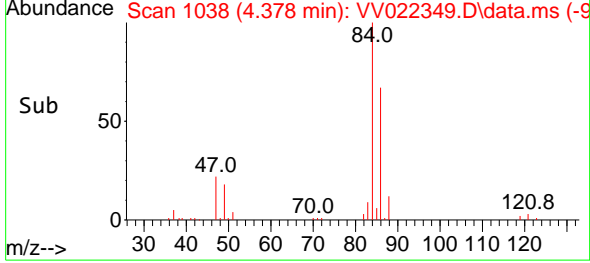
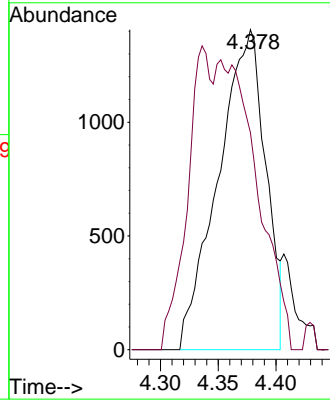
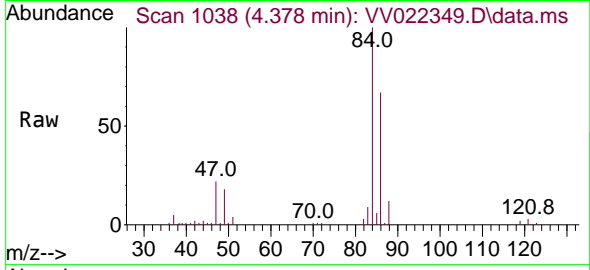




#25
 Chloroform
 Concen: 1.417 ug/L
 RT: 4.378 min Scan# 1038
 Delta R.T. 0.003 min
 Lab File: VV022349.D
 Acq: 27 Sep 2021 22:11

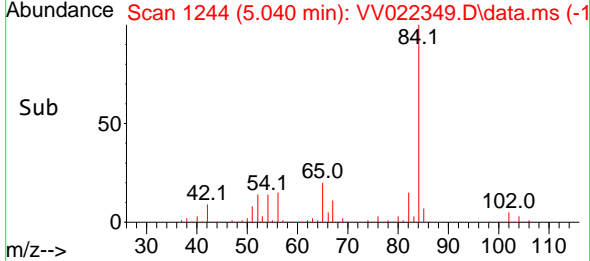
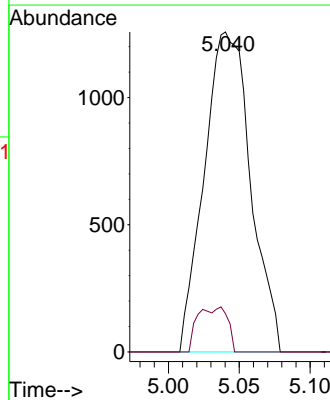
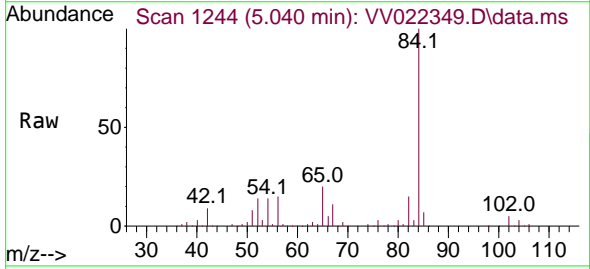
Instrument :
 MSVOA_V
 ClientSampled :

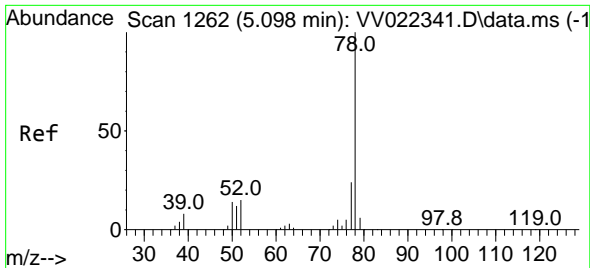
Tgt Ion: 83 Resp: 4018
 Ion Ratio Lower Upper
 83 100
 85 67.8 46.5 86.3



#27
 1,2-Dichloroethane
 Concen: 1.421 ug/L
 RT: 5.040 min Scan# 1244
 Delta R.T. -0.090 min
 Lab File: VV022349.D
 Acq: 27 Sep 2021 22:11

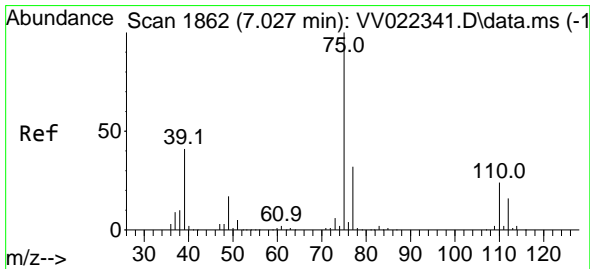
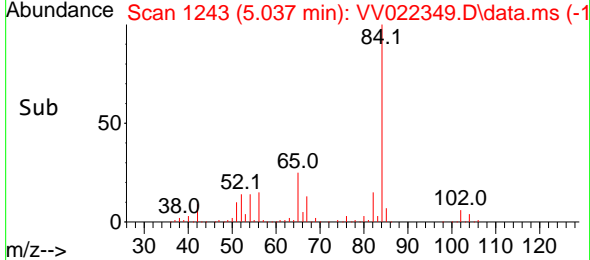
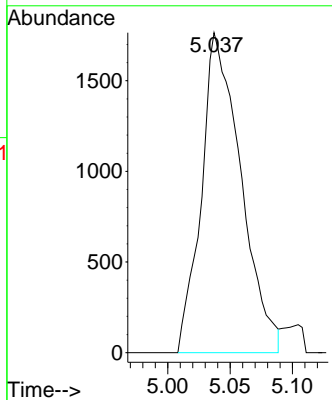
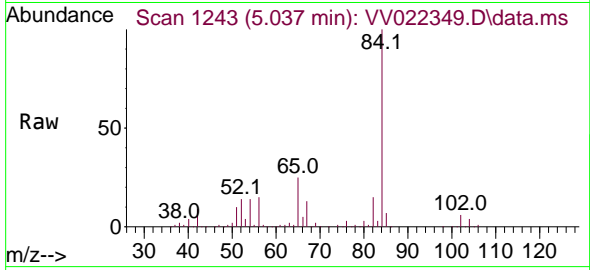
Tgt Ion: 62 Resp: 2865
 Ion Ratio Lower Upper
 62 100
 98 11.9 8.9 13.3



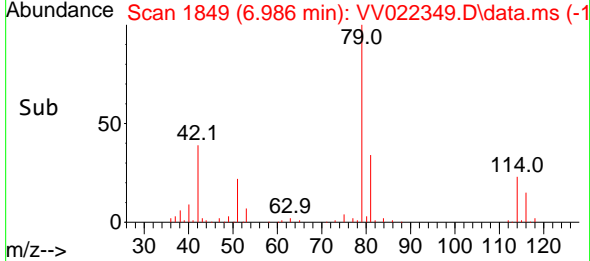
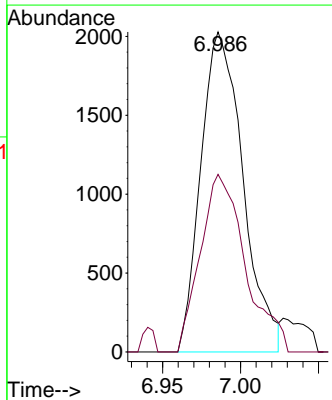
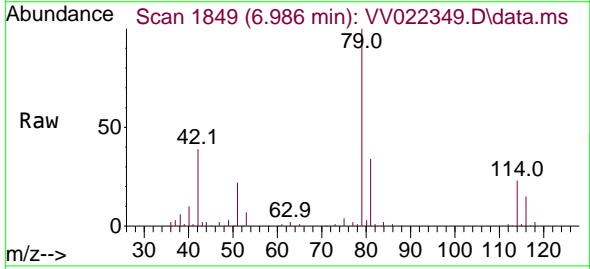


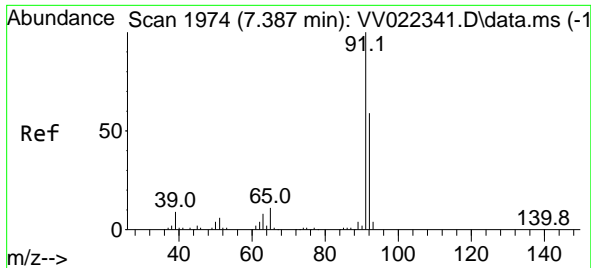
#33
Benzene
Concen: 0.654 ug/L
RT: 5.037 min Scan# 1243
Delta R.T. -0.061 min
Lab File: VV022349.D
Acq: 27 Sep 2021 22:11
Tgt Ion: 78 Resp: 3885

Instrument : MSVOA_V
ClientSampled :



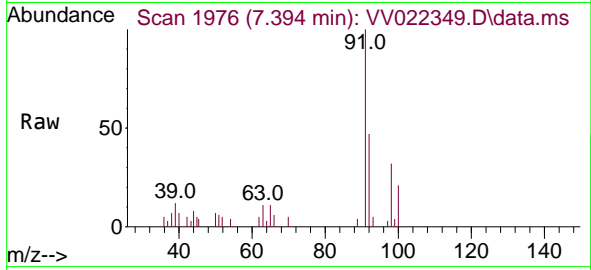
#39
cis-1,3-Dichloropropene
Concen: 1.700 ug/L
RT: 6.986 min Scan# 1849
Delta R.T. -0.042 min
Lab File: VV022349.D
Acq: 27 Sep 2021 22:11
Tgt Ion: 75 Resp: 3813
Ion Ratio Lower Upper
75 100
77 55.5 22.7 42.1#



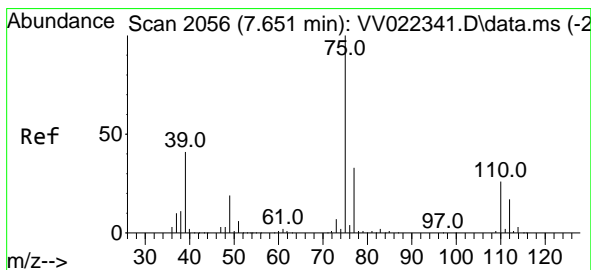
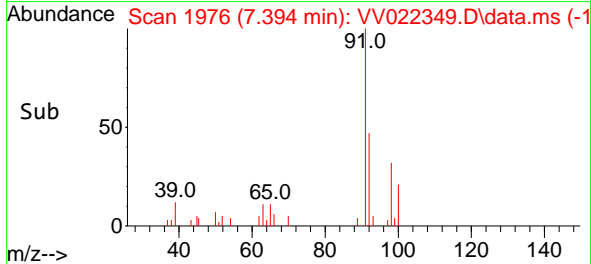
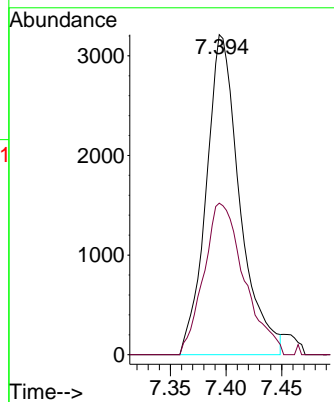


#42
 Toluene
 Concen: 1.061 ug/L
 RT: 7.394 min Scan# 1976
 Delta R.T. 0.007 min
 Lab File: VV022349.D
 Acq: 27 Sep 2021 22:11

Instrument :
 MSVOA_V
 ClientSampled :

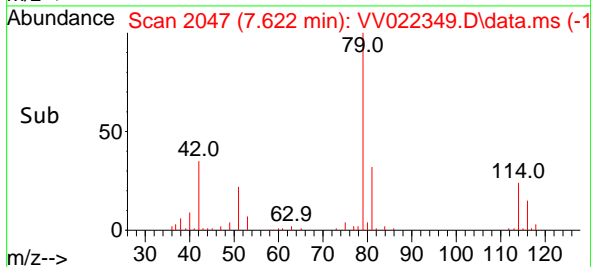
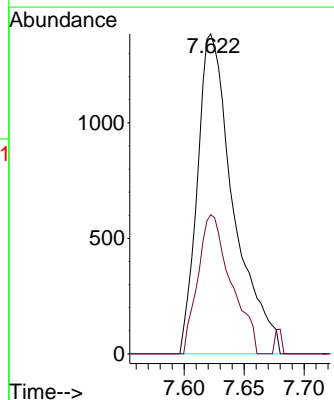
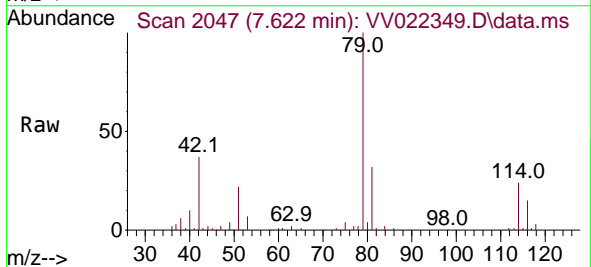


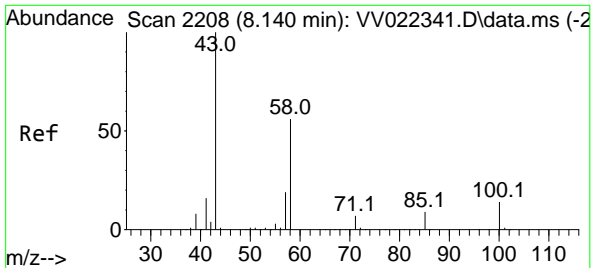
Tgt Ion: 91 Resp: 6727
 Ion Ratio Lower Upper
 91 100
 92 47.4 40.2 74.6



#44
 trans-1,3-Dichloropropene
 Concen: 1.354 ug/L
 RT: 7.622 min Scan# 2047
 Delta R.T. -0.029 min
 Lab File: VV022349.D
 Acq: 27 Sep 2021 22:11

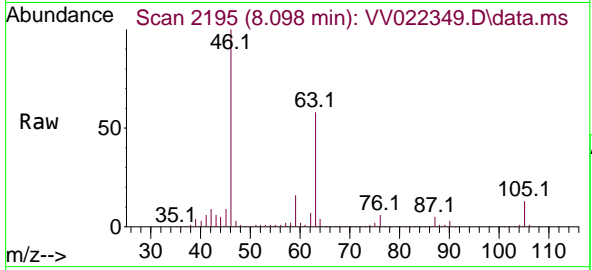
Tgt Ion: 75 Resp: 2899
 Ion Ratio Lower Upper
 75 100
 77 43.5 22.3 41.3#





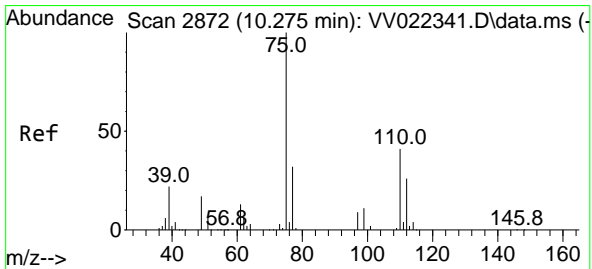
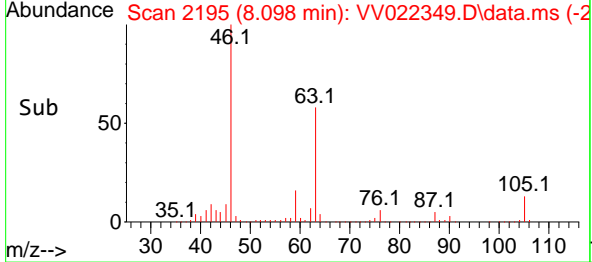
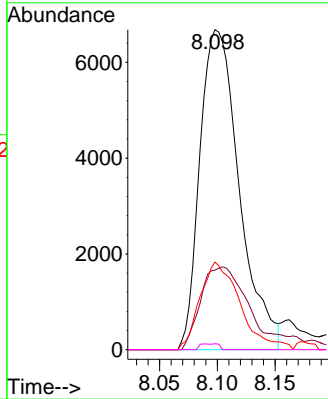
#48
 2-Hexanone
 Concen: 9.742 ug/L
 RT: 8.098 min Scan# 2195
 Delta R.T. -0.042 min
 Lab File: VV022349.D
 Acq: 27 Sep 2021 22:11

Instrument : MSVOA_V
 ClientSampled :

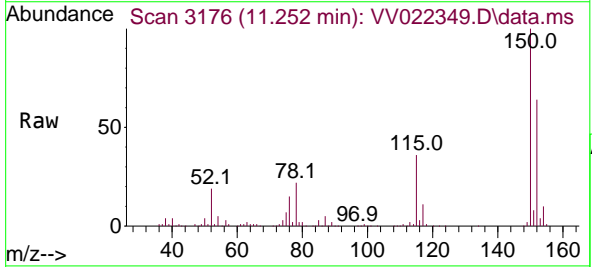


Tgt Ion: 43 Resp: 15863

Ion	Ratio	Lower	Upper
43	100		
58	31.8	45.4	68.2#
57	27.9	15.0	22.4#
100	0.6	10.7	16.1#



#61
 1,2,3-Trichloropropane
 Concen: 6.201 ug/L
 RT: 11.252 min Scan# 3176
 Delta R.T. 0.978 min
 Lab File: VV022349.D
 Acq: 27 Sep 2021 22:11



Tgt Ion: 75 Resp: 10561

Ion	Ratio	Lower	Upper
75	100		
77	31.4	25.4	38.0
110	2.9	32.6	48.8#

