

Data Path : Z:\voasrv\HPCHEM1\MSVOA_V\Data\VW092921\
 Data File : VW022378.D
 Acq On : 29 Sep 2021 15:20
 Operator : SY/MD
 Sample : M3979-06
 Misc : 5.0mL/MSVOA_V/WATER
 ALS Vial : 9 Sample Multiplier: 1

Instrument :
 MSVOA_V
 ClientSampled :
 F4A65

Quant Time: Sep 30 05:28:51 2021
 Quant Method : Z:\voasrv\HPCHEM1\MSVOA_V\Method\SFAMVLM092721WMA.M
 Quant Title : VOC Analysis
 QLast Update : Thu Sep 30 05:14:53 2021
 Response via : Initial Calibration

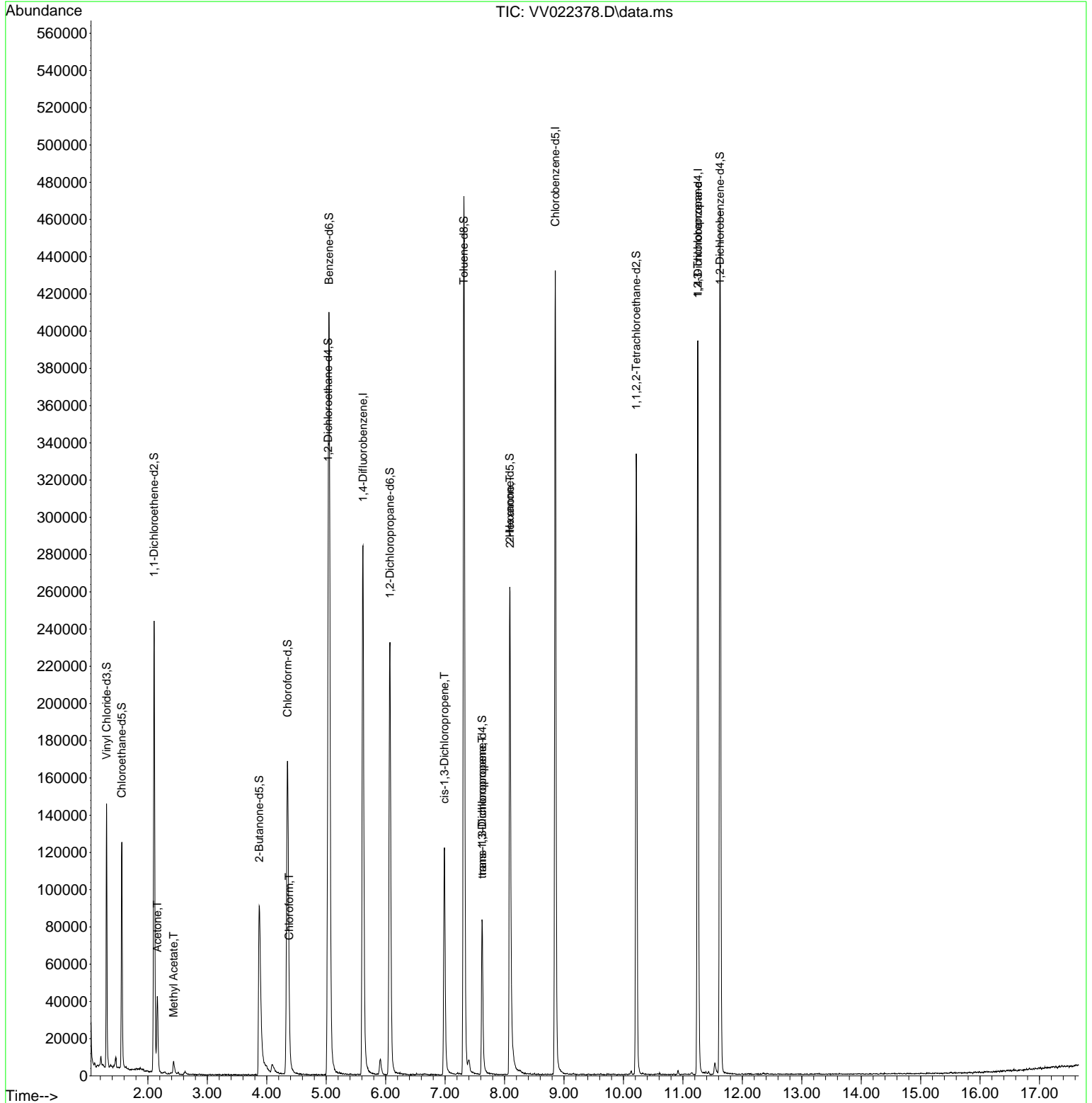
Compound	R.T.	QIon	Response	Conc	Units	Dev(Min)
Internal Standards						
1) 1,4-Difluorobenzene	5.619	114	257756	50.000	ug/L	0.00
28) Chlorobenzene-d5	8.854	117	247565	50.000	ug/L	0.00
58) 1,4-Dichlorobenzene-d4	11.252	152	106292	50.000	ug/L	0.00
System Monitoring Compounds						
4) Vinyl Chloride-d3	1.304	65	88249	40.343	ug/L	0.00
Spiked Amount	50.000	Range 60 - 135	Recovery =	80.680%		
7) Chloroethane-d5	1.561	69	76305	44.103	ug/L	0.00
Spiked Amount	50.000	Range 70 - 130	Recovery =	88.200%		
11) 1,1-Dichloroethene-d2	2.105	63	123458	32.462	ug/L	0.00
Spiked Amount	50.000	Range 60 - 125	Recovery =	64.920%		
21) 2-Butanone-d5	3.873	46	144348	93.504	ug/L	0.00
Spiked Amount	100.000	Range 40 - 130	Recovery =	93.500%		
24) Chloroform-d	4.349	84	174236	44.111	ug/L	0.00
Spiked Amount	50.000	Range 70 - 125	Recovery =	88.220%		
26) 1,2-Dichloroethane-d4	5.034	65	110669	45.689	ug/L	0.00
Spiked Amount	50.000	Range 70 - 125	Recovery =	91.380%		
32) Benzene-d6	5.050	84	361534	46.421	ug/L	0.00
Spiked Amount	50.000	Range 70 - 125	Recovery =	92.840%		
36) 1,2-Dichloropropane-d6	6.072	67	117926	47.330	ug/L	0.00
Spiked Amount	50.000	Range 70 - 120	Recovery =	94.660%		
41) Toluene-d8	7.317	98	319440	44.812	ug/L	0.00
Spiked Amount	50.000	Range 80 - 120	Recovery =	89.620%		
43) trans-1,3-Dichloroprop...	7.622	79	48908	42.987	ug/L	0.00
Spiked Amount	50.000	Range 60 - 125	Recovery =	85.980%		
47) 2-Hexanone-d5	8.088	63	84925	83.883	ug/L	0.00
Spiked Amount	100.000	Range 45 - 130	Recovery =	83.880%		
56) 1,1,2,2-Tetrachloroeth...	10.217	84	161713	44.712	ug/L	0.00
Spiked Amount	50.000	Range 65 - 120	Recovery =	89.420%		
66) 1,2-Dichlorobenzene-d4	11.625	152	126036	53.325	ug/L	0.00
Spiked Amount	50.000	Range 80 - 120	Recovery =	106.660%		
Target Compounds						
13) Acetone	2.159	43	38020	31.379	ug/L	97
15) Methyl Acetate	2.433	43	8446	3.740	ug/L	100
25) Chloroform	4.378	83	5846	1.608	ug/L	90
39) cis-1,3-Dichloropropene	6.989	75	2879	1.009	ug/L #	58
44) trans-1,3-Dichloropropene	7.625	75	2150	0.789	ug/L	92
48) 2-Hexanone	8.092	43	10889	5.255	ug/L #	79
61) 1,2,3-Trichloropropane	11.249	75	12111	6.107	ug/L #	64

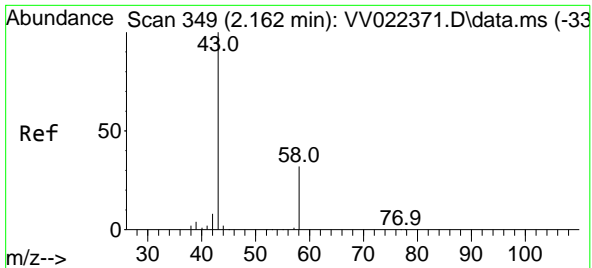
(#) = qualifier out of range (m) = manual integration (+) = signals summed

Data Path : Z:\voasrv\HPCHEM1\MSVOA_V\Data\VV092921\
 Data File : VV022378.D
 Acq On : 29 Sep 2021 15:20
 Operator : SY/MD
 Sample : M3979-06
 Misc : 5.0mL/MSVOA_V/WATER
 ALS Vial : 9 Sample Multiplier: 1

Instrument :
 MSVOA_V
 ClientSampled :
 F4A65

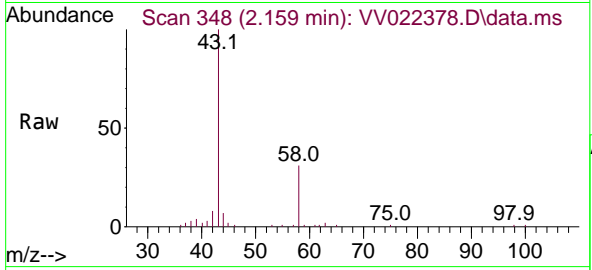
Quant Time: Sep 30 05:28:51 2021
 Quant Method : Z:\voasrv\HPCHEM1\MSVOA_V\Method\SFAMVLM092721WMA.M
 Quant Title : VOC Analysis
 QLast Update : Thu Sep 30 05:14:53 2021
 Response via : Initial Calibration



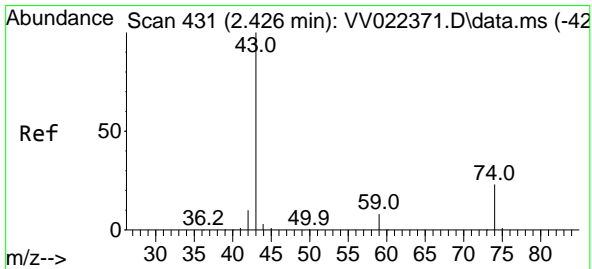
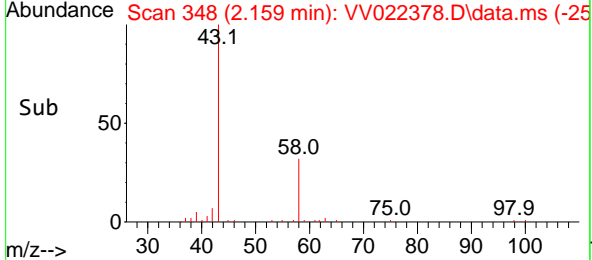
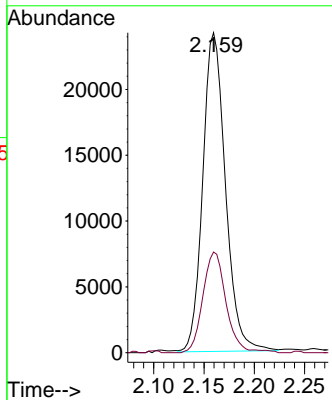


#13
 Acetone
 Concen: 31.379 ug/L
 RT: 2.159 min Scan# 348
 Delta R.T. -0.003 min
 Lab File: VV022378.D
 Acq: 29 Sep 2021 15:20

Instrument :
 MSVOA_V
 ClientSampled :
 F4A65

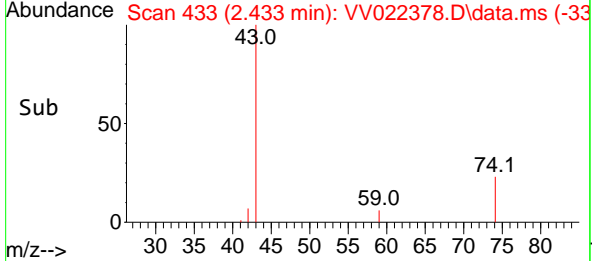
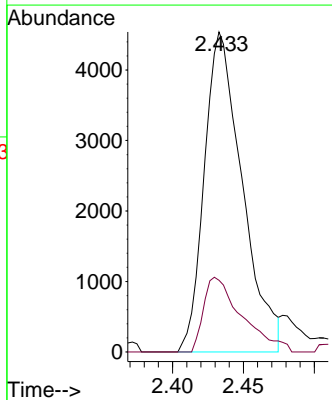
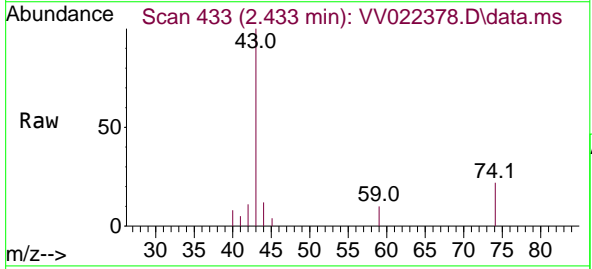


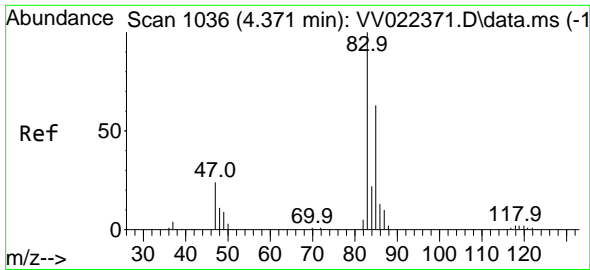
Tgt Ion: 43 Resp: 38020
 Ion Ratio Lower Upper
 43 100
 58 31.6 0.0 67.2



#15
 Methyl Acetate
 Concen: 3.740 ug/L
 RT: 2.433 min Scan# 433
 Delta R.T. 0.007 min
 Lab File: VV022378.D
 Acq: 29 Sep 2021 15:20

Tgt Ion: 43 Resp: 8446
 Ion Ratio Lower Upper
 43 100
 74 23.6 19.0 28.6

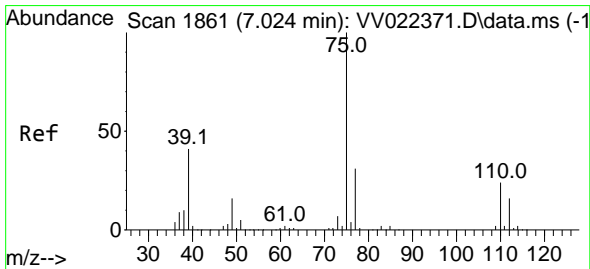
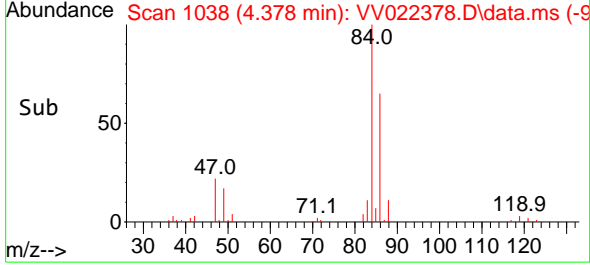
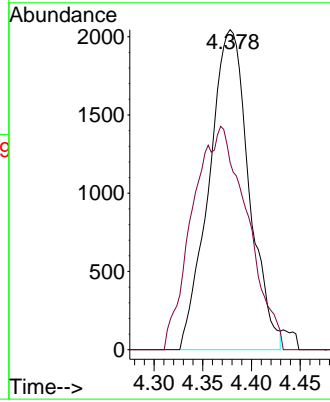
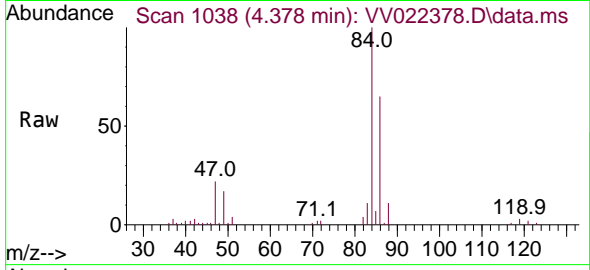




#25
 Chloroform
 Concen: 1.608 ug/L
 RT: 4.378 min Scan# 1038
 Delta R.T. 0.007 min
 Lab File: VV022378.D
 Acq: 29 Sep 2021 15:20

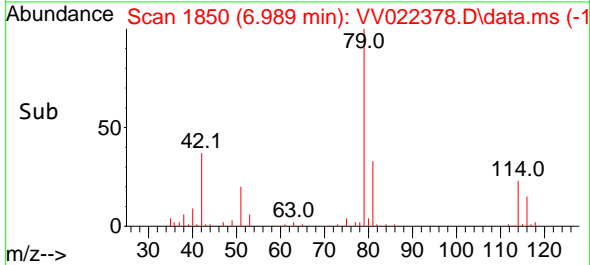
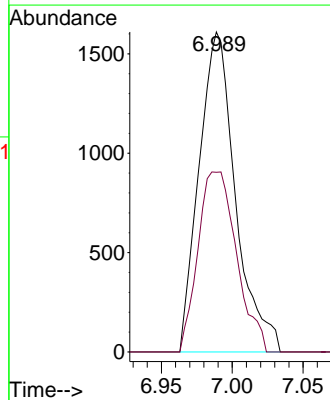
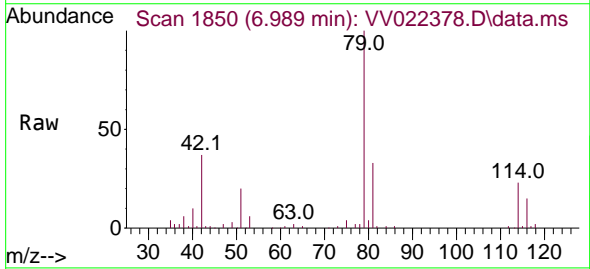
Instrument :
 MSVOA_V
 ClientSampled :
 F4A65

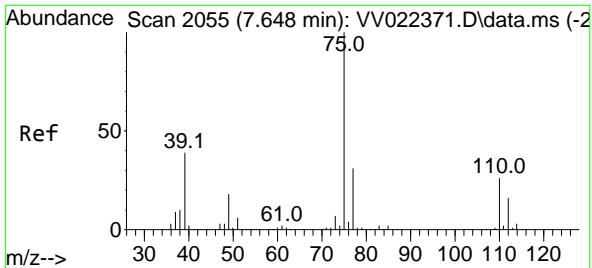
Tgt Ion: 83 Resp: 5846
 Ion Ratio Lower Upper
 83 100
 85 58.5 46.5 86.3



#39
 cis-1,3-Dichloropropene
 Concen: 1.009 ug/L
 RT: 6.989 min Scan# 1850
 Delta R.T. -0.035 min
 Lab File: VV022378.D
 Acq: 29 Sep 2021 15:20

Tgt Ion: 75 Resp: 2879
 Ion Ratio Lower Upper
 75 100
 77 56.1 22.7 42.1#

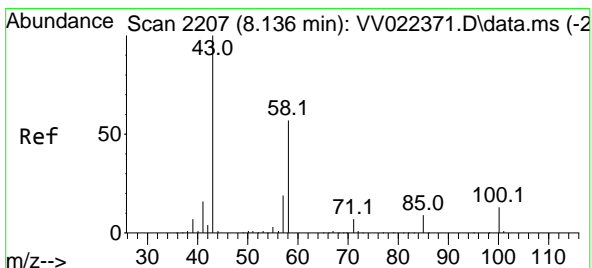
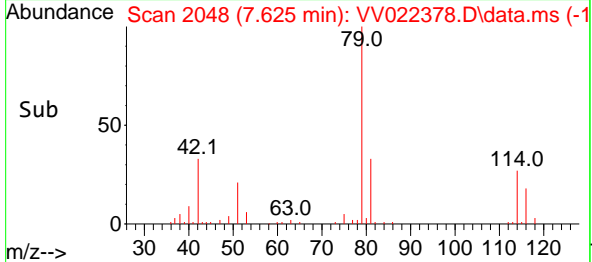
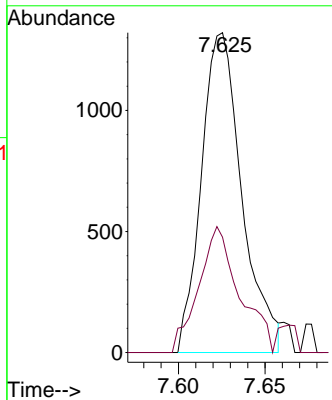
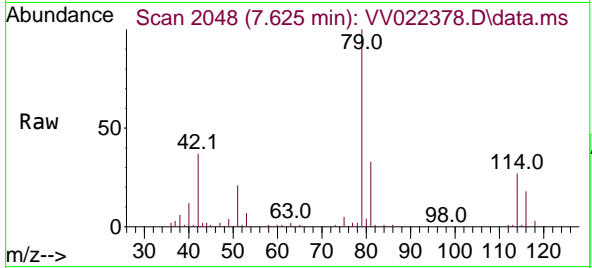




#44
 trans-1,3-Dichloropropene
 Concen: 0.789 ug/L
 RT: 7.625 min Scan# 2048
 Delta R.T. -0.022 min
 Lab File: VV022378.D
 Acq: 29 Sep 2021 15:20

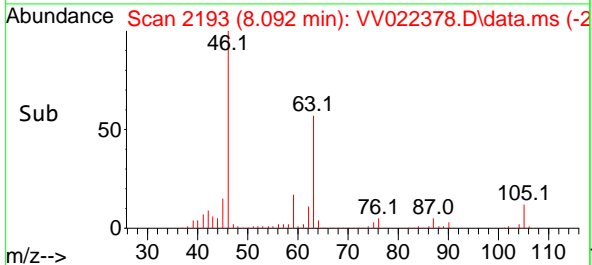
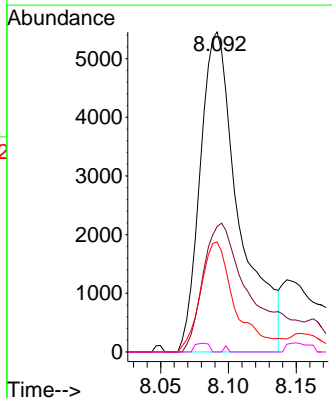
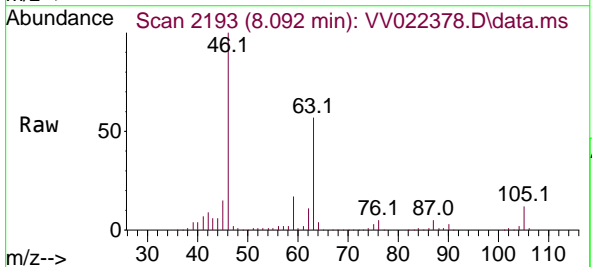
Instrument : MSVOA_V
 ClientSampled : F4A65

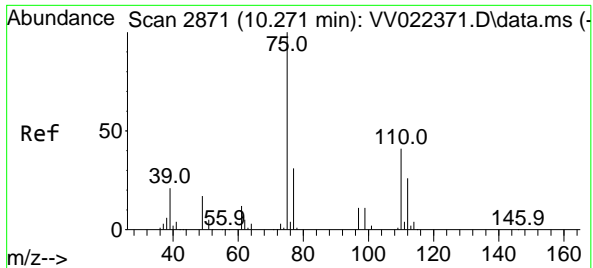
Tgt Ion: 75 Resp: 2150
 Ion Ratio Lower Upper
 75 100
 77 36.1 22.3 41.3



#48
 2-Hexanone
 Concen: 5.255 ug/L
 RT: 8.092 min Scan# 2193
 Delta R.T. -0.045 min
 Lab File: VV022378.D
 Acq: 29 Sep 2021 15:20

Tgt Ion: 43 Resp: 10889
 Ion Ratio Lower Upper
 43 100
 58 44.4 45.4 68.2#
 57 30.5 15.0 22.4#
 100 1.0 10.7 16.1#





#61
 1,2,3-Trichloropropane
 Concen: 6.107 ug/L
 RT: 11.249 min Scan# 3175
 Delta R.T. 0.978 min
 Lab File: VV022378.D
 Acq: 29 Sep 2021 15:20

Instrument :
 MSVOA_V
ClientSampled :
 F4A65

Tgt Ion	Resp	Lower	Upper
75	12111		
75	100		
77	29.3	25.4	38.0
110	2.8	32.6	48.8#

