

Data Path : Z:\voasrv\HPCHEM1\MSVOA_V\Data\VW092921\
 Data File : VW022389.D
 Acq On : 29 Sep 2021 19:44
 Operator : SY/MD
 Sample : M3978-09
 Misc : 5.0mL/MSVOA_V/WATER
 ALS Vial : 20 Sample Multiplier: 1

Instrument :
 MSVOA_V
 ClientSampled :

Quant Time: Sep 30 05:30:59 2021
 Quant Method : Z:\voasrv\HPCHEM1\MSVOA_V\Method\SFAMVLM092721WMA.M
 Quant Title : VOC Analysis
 QLast Update : Thu Sep 30 05:14:53 2021
 Response via : Initial Calibration

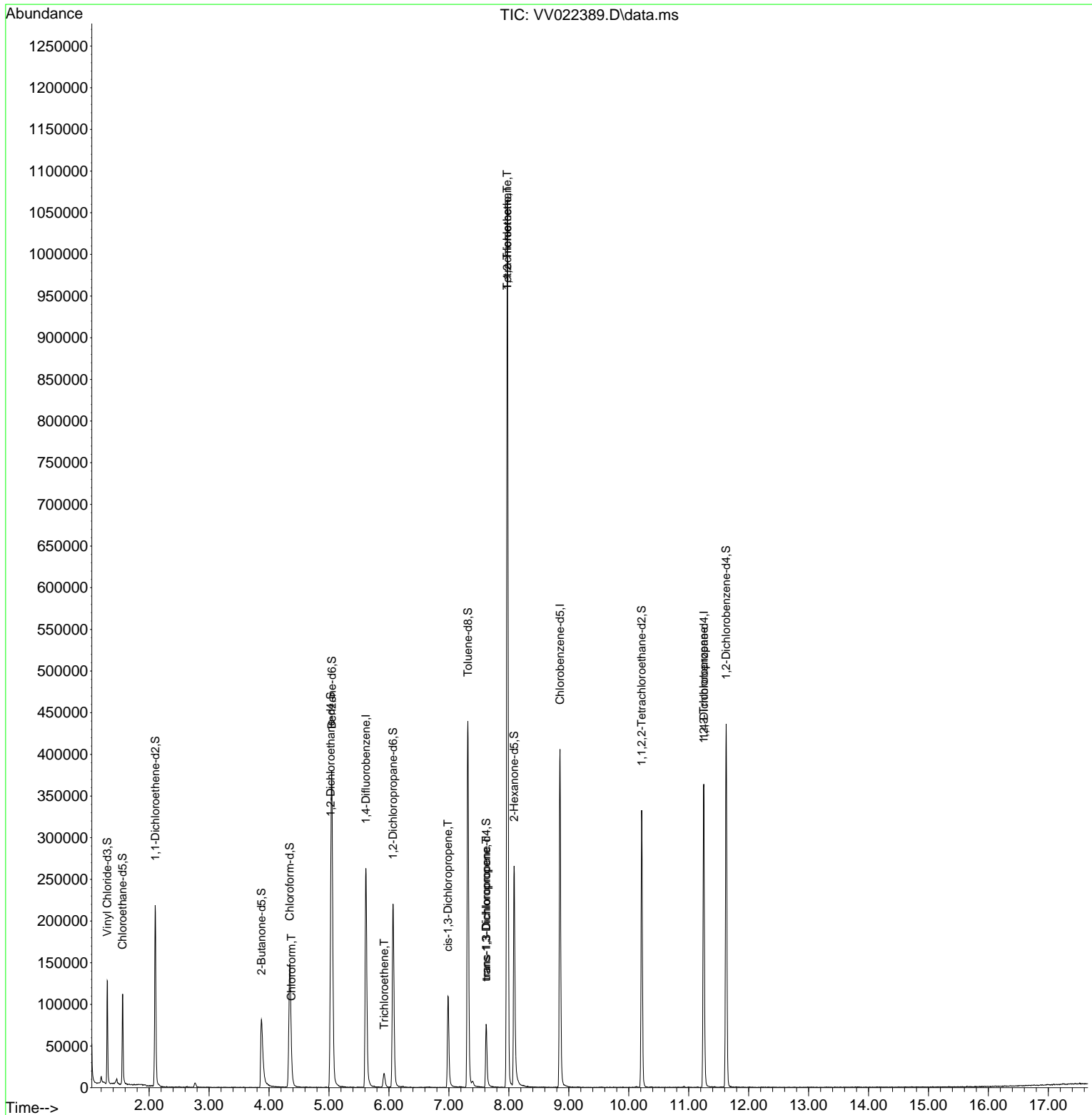
Compound	R.T.	QIon	Response	Conc	Units	Dev(Min)
Internal Standards						
1) 1,4-Difluorobenzene	5.616	114	233900	50.000	ug/L	0.00
28) Chlorobenzene-d5	8.854	117	229343	50.000	ug/L	0.00
58) 1,4-Dichlorobenzene-d4	11.252	152	100304	50.000	ug/L	0.00
System Monitoring Compounds						
4) Vinyl Chloride-d3	1.301	65	76778	38.679	ug/L	0.00
Spiked Amount	50.000	Range 60 - 135	Recovery =	77.360%		
7) Chloroethane-d5	1.558	69	69001	43.949	ug/L	0.00
Spiked Amount	50.000	Range 70 - 130	Recovery =	87.900%		
11) 1,1-Dichloroethene-d2	2.101	63	111384	32.274	ug/L	0.00
Spiked Amount	50.000	Range 60 - 125	Recovery =	64.540%		
21) 2-Butanone-d5	3.873	46	124352	88.766	ug/L	0.00
Spiked Amount	100.000	Range 40 - 130	Recovery =	88.770%		
24) Chloroform-d	4.346	84	154531	43.113	ug/L	0.00
Spiked Amount	50.000	Range 70 - 125	Recovery =	86.220%		
26) 1,2-Dichloroethane-d4	5.031	65	103580	47.123	ug/L	0.00
Spiked Amount	50.000	Range 70 - 125	Recovery =	94.240%		
32) Benzene-d6	5.047	84	331533	45.951	ug/L	0.00
Spiked Amount	50.000	Range 70 - 125	Recovery =	91.900%		
36) 1,2-Dichloropropane-d6	6.069	67	108885	47.173	ug/L	0.00
Spiked Amount	50.000	Range 70 - 120	Recovery =	94.340%		
41) Toluene-d8	7.317	98	292138	44.238	ug/L	0.00
Spiked Amount	50.000	Range 80 - 120	Recovery =	88.480%		
43) trans-1,3-Dichloroprop...	7.622	79	44885	42.585	ug/L	0.00
Spiked Amount	50.000	Range 60 - 125	Recovery =	85.180%		
47) 2-Hexanone-d5	8.088	63	89897	95.849	ug/L	0.00
Spiked Amount	100.000	Range 45 - 130	Recovery =	95.850%		
56) 1,1,2,2-Tetrachloroeth...	10.217	84	156514	46.712	ug/L	0.00
Spiked Amount	50.000	Range 65 - 120	Recovery =	93.420%		
66) 1,2-Dichlorobenzene-d4	11.625	152	115992	52.005	ug/L	0.00
Spiked Amount	50.000	Range 80 - 120	Recovery =	104.020%		
Target Compounds						
25) Chloroform	4.375	83	10730	3.252	ug/L	97
34) Trichloroethene	5.921	95	5537	3.076	ug/L	93
39) cis-1,3-Dichloropropene	6.985	75	2696	1.020	ug/L #	75
44) trans-1,3-Dichloropropene	7.625	75	2074	0.822	ug/L	85
45) 1,1,2-Trichloroethane	7.973	97	1920	1.050	ug/L #	1
46) Tetrachloroethene	7.976	164	243148	164.067	ug/L	96
61) 1,2,3-Trichloropropane	11.249	75	11329	6.054	ug/L #	65

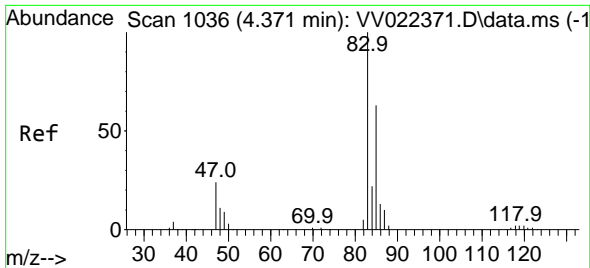
(#) = qualifier out of range (m) = manual integration (+) = signals summed

Data Path : Z:\voasrv\HPCHEM1\MSVOA_V\Data\VV092921\
 Data File : VV022389.D
 Acq On : 29 Sep 2021 19:44
 Operator : SY/MD
 Sample : M3978-09
 Misc : 5.0mL/MSVOA_V/WATER
 ALS Vial : 20 Sample Multiplier: 1

Instrument :
 MSVOA_V
 ClientSampled :

Quant Time: Sep 30 05:30:59 2021
 Quant Method : Z:\voasrv\HPCHEM1\MSVOA_V\Method\SFAMVLM092721WMA.M
 Quant Title : VOC Analysis
 QLast Update : Thu Sep 30 05:14:53 2021
 Response via : Initial Calibration

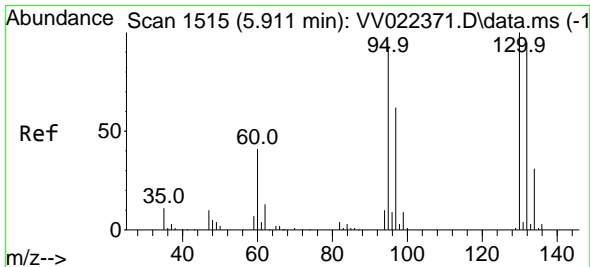
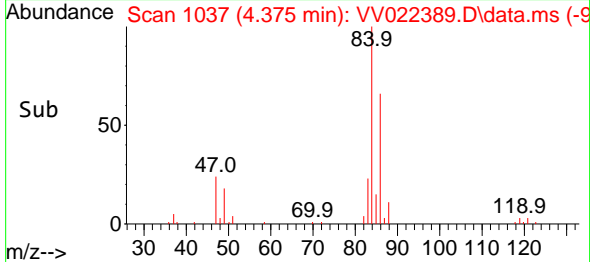
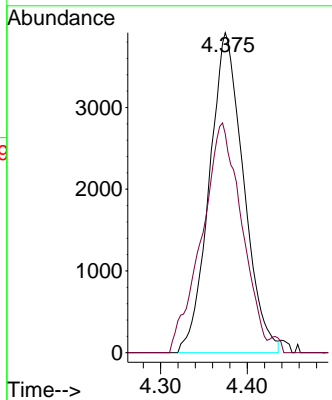
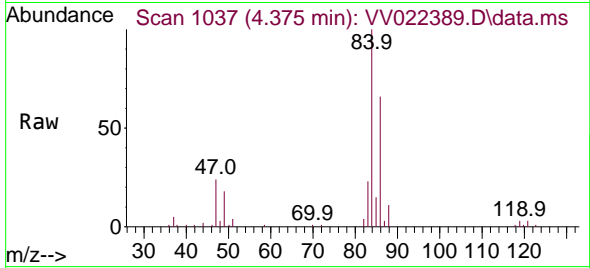




#25
 Chloroform
 Concen: 3.252 ug/L
 RT: 4.375 min Scan# 1037
 Delta R.T. 0.003 min
 Lab File: VV022389.D
 Acq: 29 Sep 2021 19:44

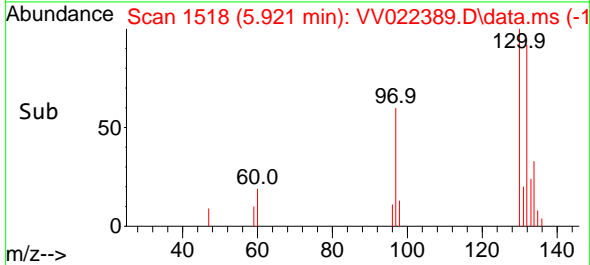
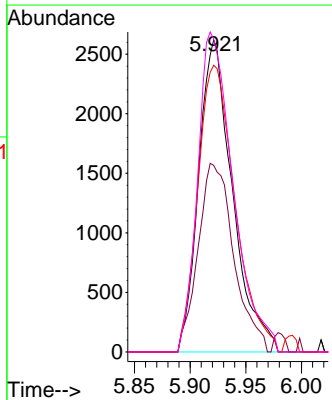
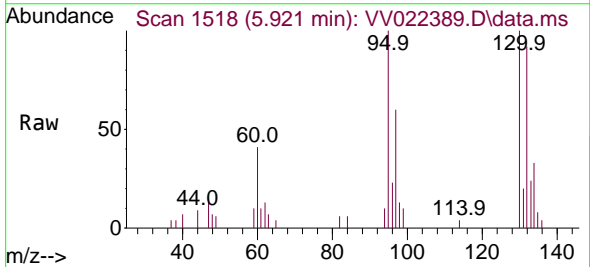
Instrument :
 MSVOA_V
 ClientSampled :

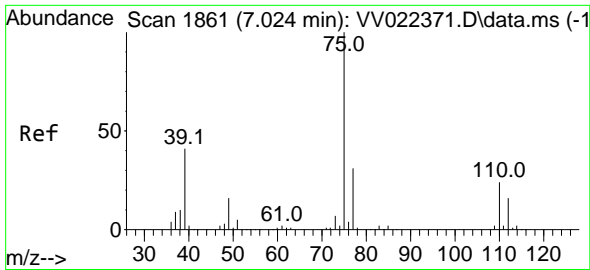
Tgt Ion: 83 Resp: 10730
 Ion Ratio Lower Upper
 83 100
 85 68.4 46.5 86.3



#34
 Trichloroethene
 Concen: 3.076 ug/L
 RT: 5.921 min Scan# 1518
 Delta R.T. 0.010 min
 Lab File: VV022389.D
 Acq: 29 Sep 2021 19:44

Tgt Ion: 95 Resp: 5537
 Ion Ratio Lower Upper
 95 100
 97 59.8 45.2 84.0
 132 91.9 71.0 131.8
 130 100.2 73.7 136.9

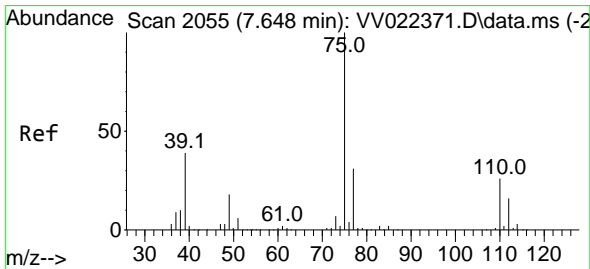
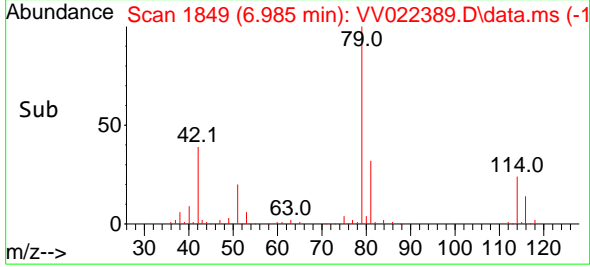
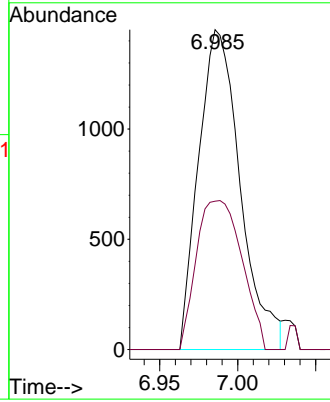
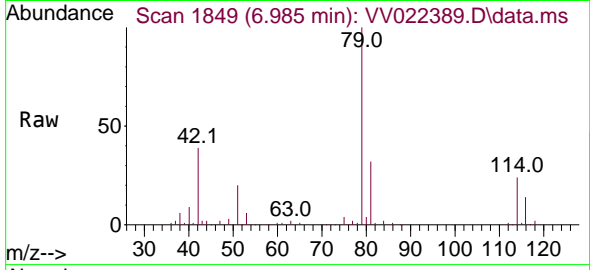




#39
 cis-1,3-Dichloropropene
 Concen: 1.020 ug/L
 RT: 6.985 min Scan# 1849
 Delta R.T. -0.038 min
 Lab File: VV022389.D
 Acq: 29 Sep 2021 19:44

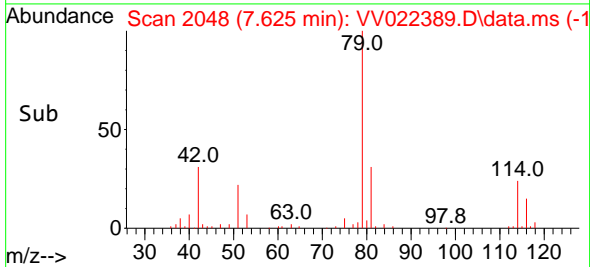
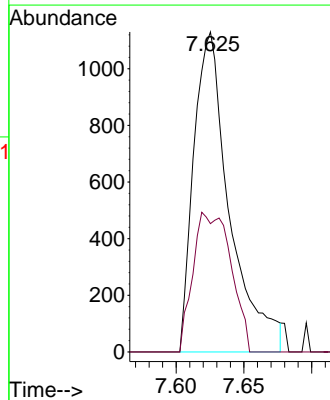
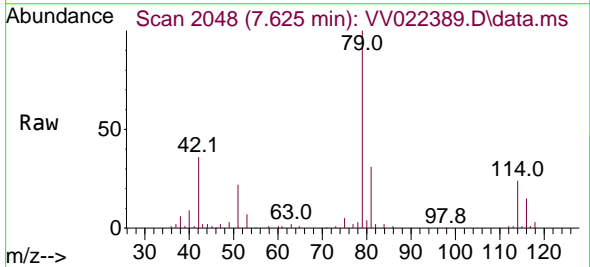
Instrument :
 MSVOA_V
 ClientSampled :

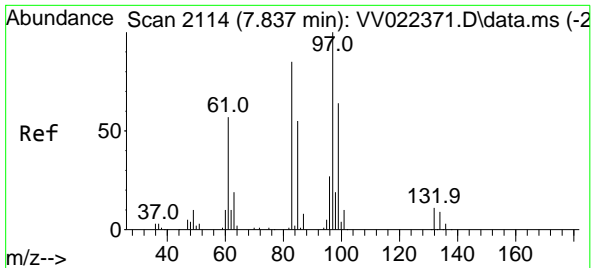
Tgt Ion: 75 Resp: 2696
 Ion Ratio Lower Upper
 75 100
 77 46.4 22.7 42.1#



#44
 trans-1,3-Dichloropropene
 Concen: 0.822 ug/L
 RT: 7.625 min Scan# 2048
 Delta R.T. -0.022 min
 Lab File: VV022389.D
 Acq: 29 Sep 2021 19:44

Tgt Ion: 75 Resp: 2074
 Ion Ratio Lower Upper
 75 100
 77 40.1 22.3 41.3



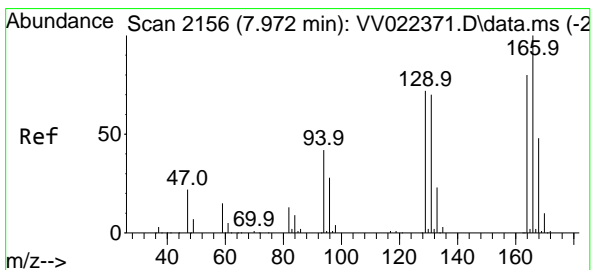
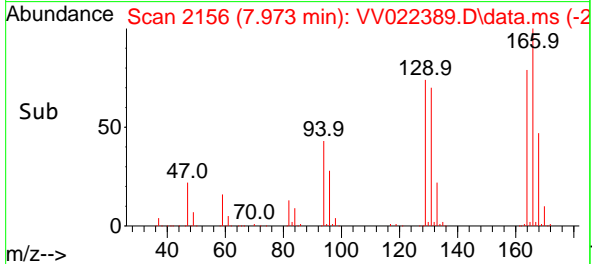
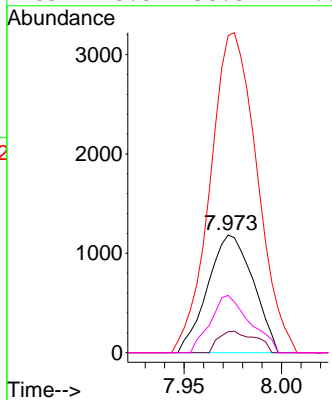
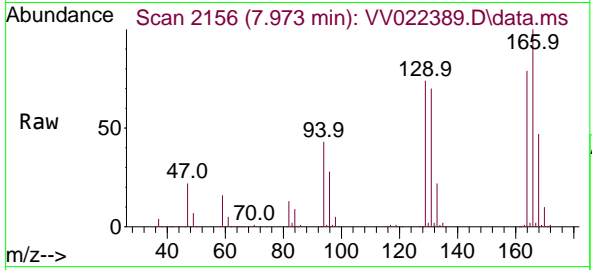


#45
 1,1,2-Trichloroethane
 Concen: 1.050 ug/L
 RT: 7.973 min Scan# 2156
 Delta R.T. 0.135 min
 Lab File: VV022389.D
 Acq: 29 Sep 2021 19:44

Instrument : MSVOA_V
 ClientSampled :

Tgt Ion: 97 Resp: 1920

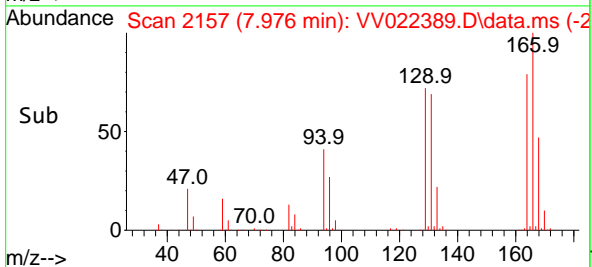
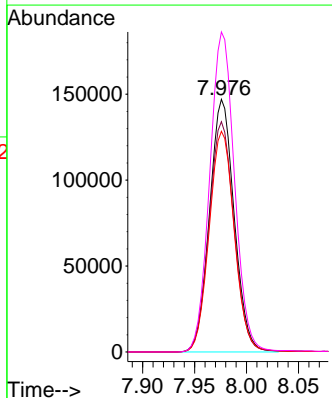
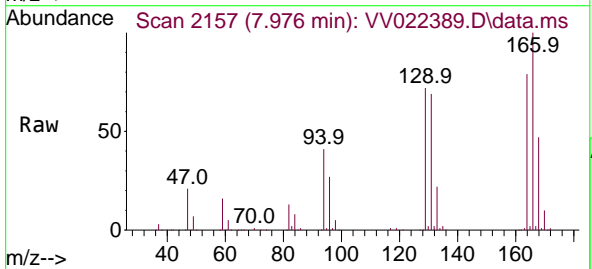
Ion	Ratio	Lower	Upper
97	100		
99	17.8	44.6	82.8#
83	269.8	59.8	111.1#
85	48.8	38.8	72.0

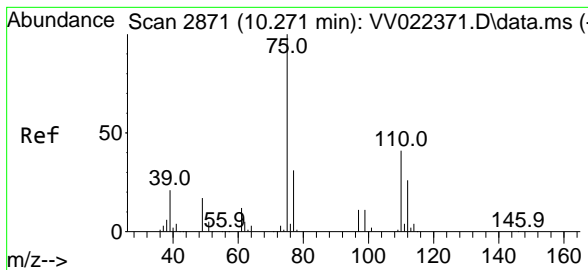


#46
 Tetrachloroethene
 Concen: 164.067 ug/L
 RT: 7.976 min Scan# 2157
 Delta R.T. 0.003 min
 Lab File: VV022389.D
 Acq: 29 Sep 2021 19:44

Tgt Ion: 164 Resp: 243148

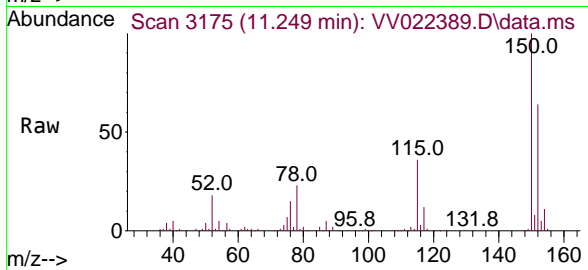
Ion	Ratio	Lower	Upper
164	100		
129	91.2	66.4	123.4
131	87.4	63.6	118.0
166	126.7	91.6	170.0





#61
 1,2,3-Trichloropropane
 Concen: 6.054 ug/L
 RT: 11.249 min Scan# 3175
 Delta R.T. 0.978 min
 Lab File: VV022389.D
 Acq: 29 Sep 2021 19:44

Instrument :
 MSVOA_V
 ClientSampled :



Tgt Ion: 75 Resp: 11329

Ion	Ratio	Lower	Upper
75	100		
77	32.8	25.4	38.0
110	2.5	32.6	48.8#

