

Data Path : Z:\voasrv\HPCHEM1\MSVOA_V\Data\VW092921\
 Data File : VW022409.D
 Acq On : 30 Sep 2021 04:09
 Operator : SY/MD
 Sample : M3979-15
 Misc : 5.0mL/MSVOA_V/WATER
 ALS Vial : 41 Sample Multiplier: 1

Instrument :
 MSVOA_V
 ClientSampled :
 F4A10

Quant Time: Sep 30 07:10:07 2021
 Quant Method : Z:\voasrv\HPCHEM1\MSVOA_V\Method\SFAMVLM092721WMA.M
 Quant Title : VOC Analysis
 QLast Update : Thu Sep 30 06:55:59 2021
 Response via : Initial Calibration

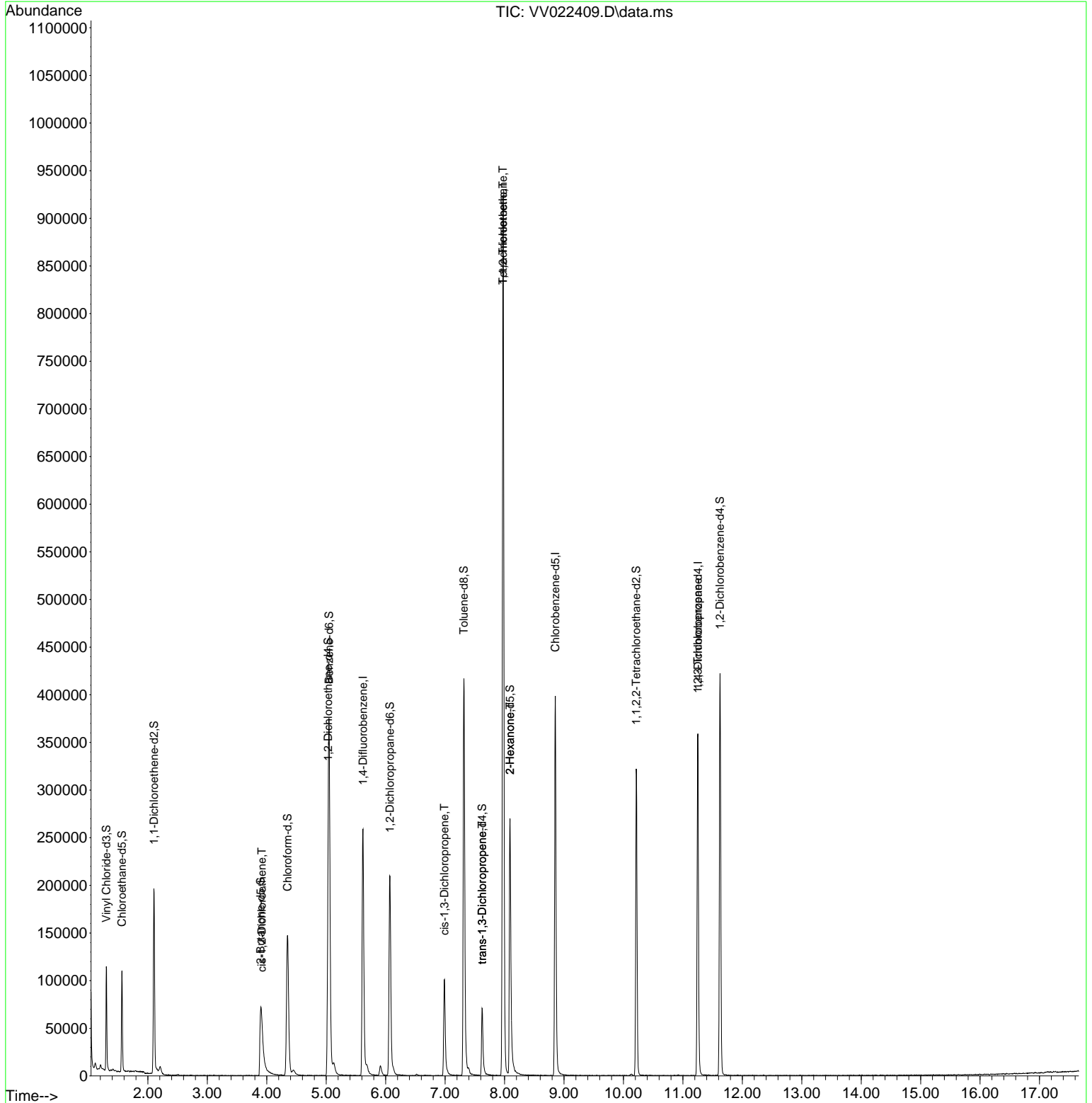
Compound	R.T.	QIon	Response	Conc	Units	Dev(Min)
Internal Standards						
1) 1,4-Difluorobenzene	5.619	114	229486	50.000	ug/L	0.00
28) Chlorobenzene-d5	8.854	117	232445	50.000	ug/L	0.00
58) 1,4-Dichlorobenzene-d4	11.252	152	98479	50.000	ug/L	0.00
System Monitoring Compounds						
4) Vinyl Chloride-d3	1.301	65	68155	34.995	ug/L	0.00
Spiked Amount	50.000	Range 60 - 135	Recovery =	70.000%		
7) Chloroethane-d5	1.565	69	64586	41.928	ug/L	0.00
Spiked Amount	50.000	Range 70 - 130	Recovery =	83.860%		
11) 1,1-Dichloroethene-d2	2.102	63	100111	29.565	ug/L	0.00
Spiked Amount	50.000	Range 60 - 125	Recovery =	59.140%#		
21) 2-Butanone-d5	3.899	46	145244	105.674	ug/L	0.00
Spiked Amount	100.000	Range 40 - 130	Recovery =	105.670%		
24) Chloroform-d	4.349	84	156014	44.364	ug/L	0.00
Spiked Amount	50.000	Range 70 - 125	Recovery =	88.720%		
26) 1,2-Dichloroethane-d4	5.034	65	98380	45.619	ug/L	0.00
Spiked Amount	50.000	Range 70 - 125	Recovery =	91.240%		
32) Benzene-d6	5.050	84	319976	43.757	ug/L	0.00
Spiked Amount	50.000	Range 70 - 125	Recovery =	87.520%		
36) 1,2-Dichloropropane-d6	6.072	67	109405	46.766	ug/L	0.00
Spiked Amount	50.000	Range 70 - 120	Recovery =	93.540%		
41) Toluene-d8	7.317	98	286537	42.811	ug/L	0.00
Spiked Amount	50.000	Range 80 - 120	Recovery =	85.620%		
43) trans-1,3-Dichloroprop...	7.622	79	42913	40.171	ug/L	0.00
Spiked Amount	50.000	Range 60 - 125	Recovery =	80.340%		
47) 2-Hexanone-d5	8.092	63	99714	104.897	ug/L	0.00
Spiked Amount	100.000	Range 45 - 130	Recovery =	104.900%		
56) 1,1,2,2-Tetrachloroeth...	10.217	84	151673	44.663	ug/L	0.00
Spiked Amount	50.000	Range 65 - 120	Recovery =	89.320%		
66) 1,2-Dichlorobenzene-d4	11.625	152	114878	52.460	ug/L	0.00
Spiked Amount	50.000	Range 80 - 120	Recovery =	104.920%		
Target Compounds						
20) cis-1,2-Dichloroethene	3.915	96	3612	1.948	ug/L	93
39) cis-1,3-Dichloropropene	6.989	75	2422	0.904	ug/L #	61
44) trans-1,3-Dichloropropene	7.622	75	1939	0.758	ug/L	86
45) 1,1,2-Trichloroethane	7.973	97	1651	0.891	ug/L #	3
46) Tetrachloroethene	7.976	164	216165	143.913	ug/L	98
48) 2-Hexanone	8.092	43	11363	5.841	ug/L #	69
61) 1,2,3-Trichloropropane	11.249	75	11314	6.158	ug/L #	64

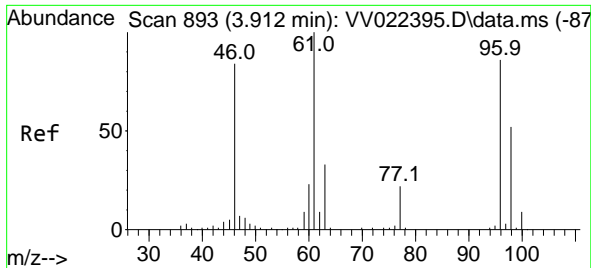
(#) = qualifier out of range (m) = manual integration (+) = signals summed

Data Path : Z:\voasrv\HPCHEM1\MSVOA_V\Data\VV092921\
 Data File : VV022409.D
 Acq On : 30 Sep 2021 04:09
 Operator : SY/MD
 Sample : M3979-15
 Misc : 5.0mL/MSVOA_V/WATER
 ALS Vial : 41 Sample Multiplier: 1

Instrument :
 MSVOA_V
 ClientSampleId :
 F4A10

Quant Time: Sep 30 07:10:07 2021
 Quant Method : Z:\voasrv\HPCHEM1\MSVOA_V\Method\SFAMVLM092721WMA.M
 Quant Title : VOC Analysis
 QLast Update : Thu Sep 30 06:55:59 2021
 Response via : Initial Calibration

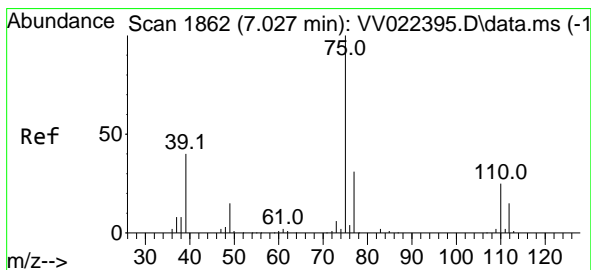
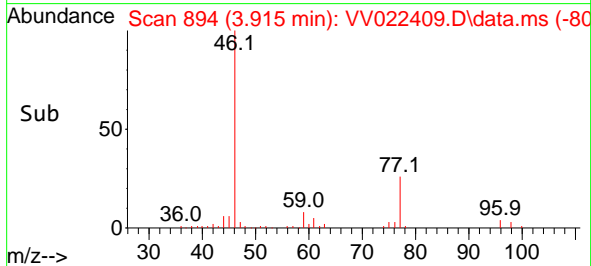
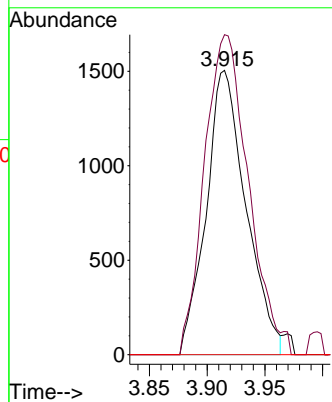
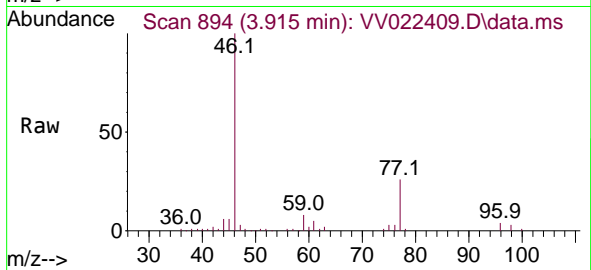




#20
 cis-1,2-Dichloroethene
 Concen: 1.948 ug/L
 RT: 3.915 min Scan# 894
 Delta R.T. 0.003 min
 Lab File: VV022409.D
 Acq: 30 Sep 2021 04:09

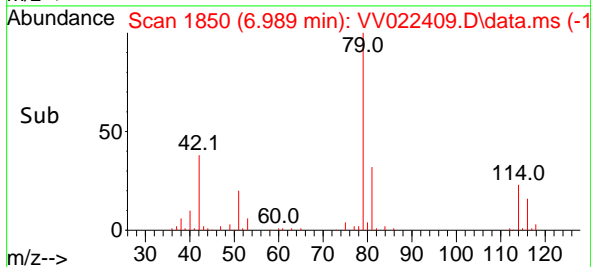
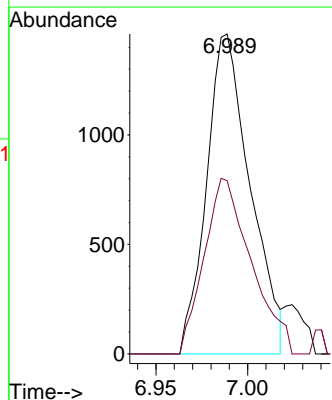
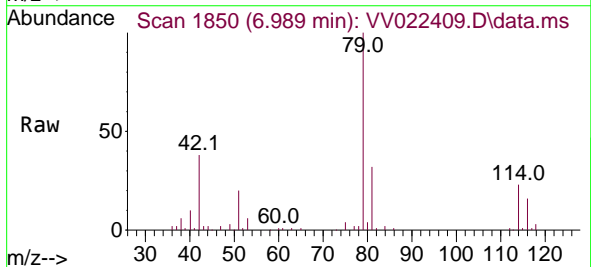
Instrument :
 MSVOA_V
 ClientSampled :
 F4A10

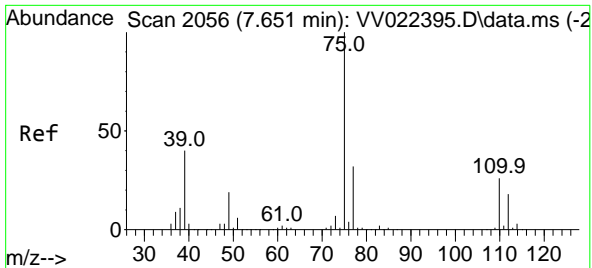
Tgt Ion: 96 Resp: 3612
 Ion Ratio Lower Upper
 96 100
 61 112.6 84.6 157.0
 68 0.0 0.0 0.0



#39
 cis-1,3-Dichloropropene
 Concen: 0.904 ug/L
 RT: 6.989 min Scan# 1850
 Delta R.T. -0.038 min
 Lab File: VV022409.D
 Acq: 30 Sep 2021 04:09

Tgt Ion: 75 Resp: 2422
 Ion Ratio Lower Upper
 75 100
 77 54.1 22.7 42.1#

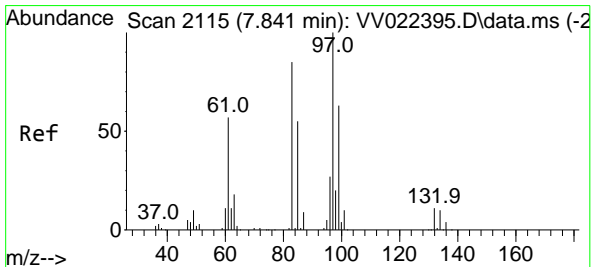
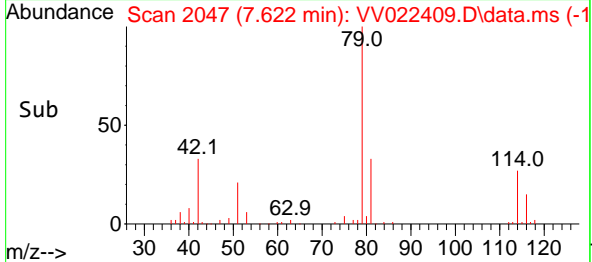
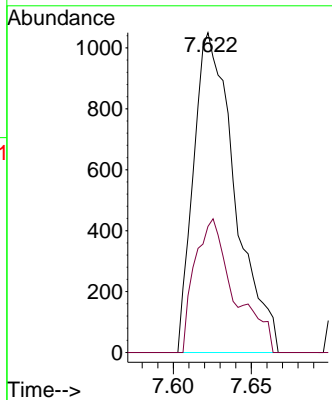
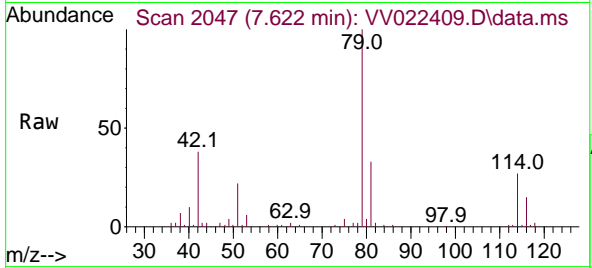




#44
 trans-1,3-Dichloropropene
 Concen: 0.758 ug/L
 RT: 7.622 min Scan# 2047
 Delta R.T. -0.029 min
 Lab File: VV022409.D
 Acq: 30 Sep 2021 04:09

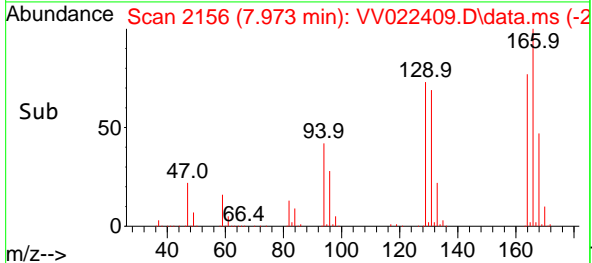
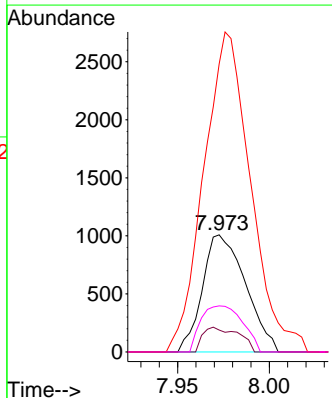
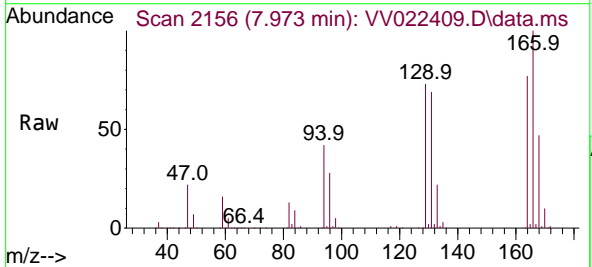
Instrument :
 MSVOA_V
 ClientSampled :
 F4A10

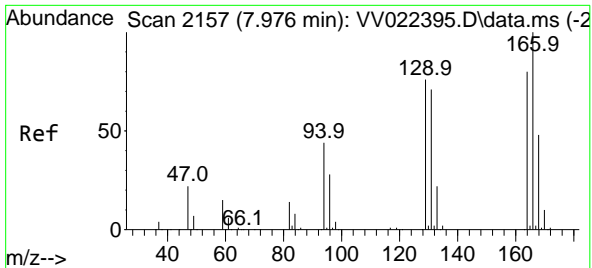
Tgt Ion: 75 Resp: 1939
 Ion Ratio Lower Upper
 75 100
 77 39.4 22.3 41.3



#45
 1,1,2-Trichloroethane
 Concen: 0.891 ug/L
 RT: 7.973 min Scan# 2156
 Delta R.T. 0.132 min
 Lab File: VV022409.D
 Acq: 30 Sep 2021 04:09

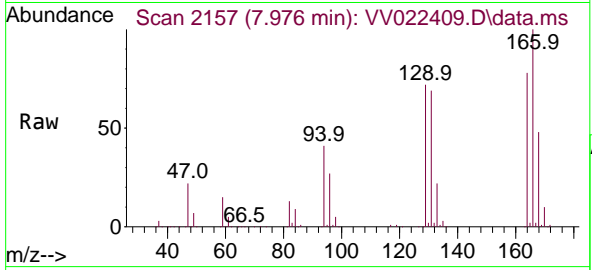
Tgt Ion: 97 Resp: 1651
 Ion Ratio Lower Upper
 97 100
 99 18.7 44.6 82.8#
 83 246.0 59.8 111.1#
 85 39.3 38.8 72.0



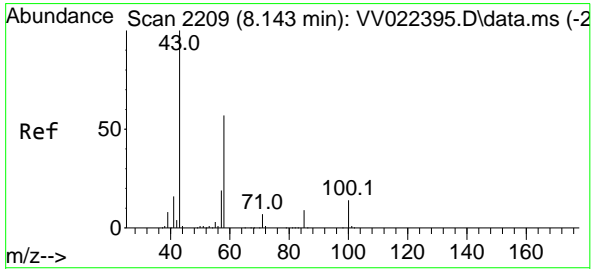
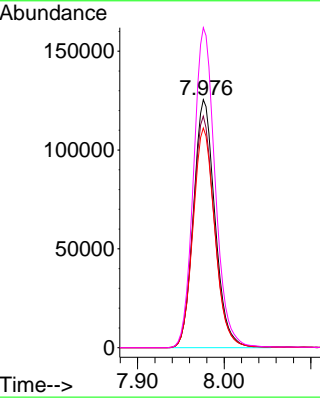
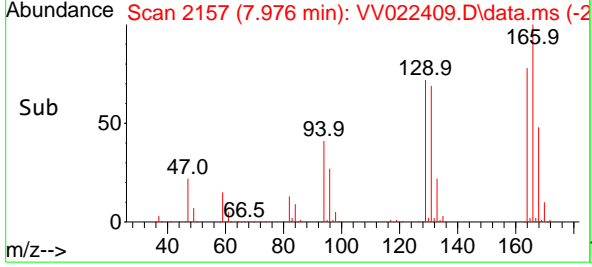


#46
 Tetrachloroethene
 Concen: 143.913 ug/L
 RT: 7.976 min Scan# 2157
 Delta R.T. 0.000 min
 Lab File: VV022409.D
 Acq: 30 Sep 2021 04:09

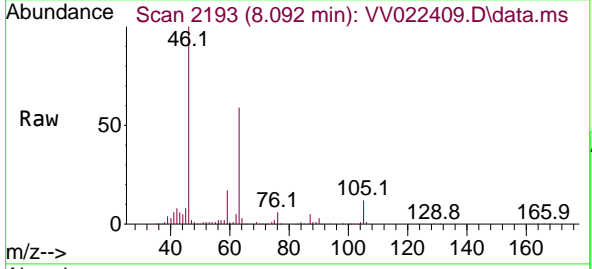
Instrument :
 MSVOA_V
 ClientSampled :
 F4A10



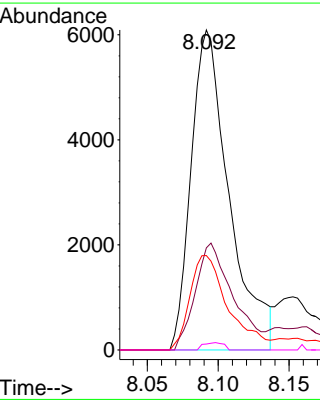
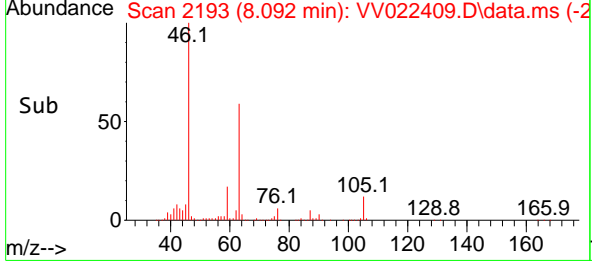
Tgt Ion:164 Resp: 216165
 Ion Ratio Lower Upper
 164 100
 129 93.4 66.4 123.4
 131 88.6 63.6 118.0
 166 129.0 91.6 170.0

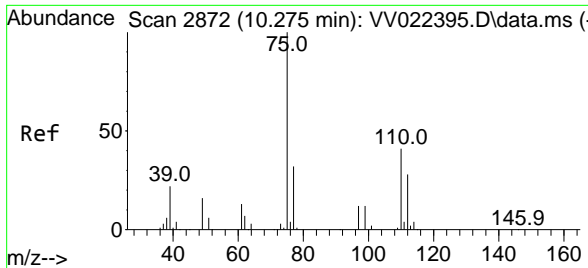


#48
 2-Hexanone
 Concen: 5.841 ug/L
 RT: 8.092 min Scan# 2193
 Delta R.T. -0.051 min
 Lab File: VV022409.D
 Acq: 30 Sep 2021 04:09



Tgt Ion: 43 Resp: 11363
 Ion Ratio Lower Upper
 43 100
 58 32.9 45.4 68.2#
 57 29.9 15.0 22.4#
 100 1.2 10.7 16.1#





#61
 1,2,3-Trichloropropane
 Concen: 6.158 ug/L
 RT: 11.249 min Scan# 3175
 Delta R.T. 0.974 min
 Lab File: VV022409.D
 Acq: 30 Sep 2021 04:09

Instrument :
 MSVOA_V
 ClientSampled :
 F4A10

Tgt Ion: 75 Resp: 11314

Ion	Ratio	Lower	Upper
75	100		
77	29.5	25.4	38.0
110	2.5	32.6	48.8#

