

Data Path : Z:\VOASRV\HPCHEM1\MSVOA V\DATA\VV093020\
 Data File : VV018579.D
 Acq On : 30 Sep 2020 19:24
 Operator : SY/MD
 Sample : VSTDCCC050EC
 Misc : 5.0mL/MSVOA V/WATER
 ALS Vial : 27 Sample Multiplier: 1

Instrument :
 MSVOA_V
 ClientSampleId :
 VSTD05095

Quant Time: Oct 01 07:43:06 2020
 Quant Method : Z:\VOASRV\HPCHEM1\MSVOA_V\METHOD\SOMVLM092920WMA.M
 Quant Title : VOC Analysis
 QLast Update : Thu Oct 01 07:39:17 2020
 Response via : Initial Calibration

Internal Standards	R.T.	QIon	Response	Conc	Units	Dev(Min)
1) 1,4-Difluorobenzene	5.64	114	432459	50.00	ug/L	0.00
28) Chlorobenzene-d5	8.87	117	393628	50.00	ug/L	0.00
60) 1,4-Dichlorobenzene-d4	11.27	152	205316	50.00	ug/L	0.00

System Monitoring Compounds

4) Vinyl Chloride-d3	1.32	65	83045	32.74	ug/L	0.00
Spiked Amount	50.000	Range	60 - 135	Recovery	=	65.48%
7) Chloroethane-d5	1.58	69	84474	40.28	ug/L	0.00
Spiked Amount	50.000	Range	70 - 130	Recovery	=	80.56%
11) 1,1-Dichloroethene-d2	2.13	63	208261	40.30	ug/L	0.00
Spiked Amount	50.000	Range	60 - 125	Recovery	=	80.60%
21) 2-Butanone-d5	3.92	46	192963	102.00	ug/L	0.00
Spiked Amount	100.000	Range	40 - 130	Recovery	=	102.00%
24) Chloroform-d	4.38	84	240650	43.88	ug/L	0.00
Spiked Amount	50.000	Range	70 - 125	Recovery	=	87.76%
26) 1,2-Dichloroethane-d4	5.06	65	151974	43.65	ug/L	0.00
Spiked Amount	50.000	Range	70 - 125	Recovery	=	87.30%
32) Benzene-d6	5.08	84	454531	45.59	ug/L	0.00
Spiked Amount	50.000	Range	70 - 125	Recovery	=	91.18%
36) 1,2-Dichloropropane-d6	6.09	67	143776	47.72	ug/L	0.00
Spiked Amount	50.000	Range	70 - 120	Recovery	=	95.44%
41) Toluene-d8	7.34	98	421939	44.98	ug/L	0.00
Spiked Amount	50.000	Range	80 - 120	Recovery	=	89.96%
43) trans-1,3-Dichloropropene-	7.64	79	75135	46.17	ug/L	0.00
Spiked Amount	50.000	Range	60 - 125	Recovery	=	92.34%
47) 2-Hexanone-d5	8.11	63	124303	108.63	ug/L	0.00
Spiked Amount	100.000	Range	45 - 130	Recovery	=	108.63%
57) 1,1,2,2-Tetrachloroethane-	10.24	84	179782	45.01	ug/L	0.00
Spiked Amount	50.000	Range	65 - 120	Recovery	=	90.02%
64) 1,2-Dichlorobenzene-d4	11.65	152	173314	43.89	ug/L	0.00
Spiked Amount	50.000	Range	80 - 120	Recovery	=	87.78%

Target Compounds

Target Compounds	R.T.	QIon	Response	Conc	Units	Ovalue
2) Dichlorodifluoromethane	1.14	85	119682	40.701	ug/L	99
3) Chloromethane	1.25	50	131701	41.858	ug/L	99
5) Vinyl chloride	1.32	62	139122	42.056	ug/L	99
6) Bromomethane	1.53	94	103703	46.060	ug/L	98
8) Chloroethane	1.60	64	98098	48.122	ug/L	100
9) Trichlorofluoromethane	1.77	101	218779	43.514	ug/L	99
10) 1,1,2-Trichloro-1,2,2-trif	2.13	101	128267	45.582	ug/L	98
12) 1,1-Dichloroethene	2.13	96	123000	45.562	ug/L	95
13) Acetone	2.21	43	144530	88.425	ug/L	99
14) Carbon disulfide	2.31	76	390230	44.622	ug/L	99
15) Methyl Acetate	2.45	43	153813	48.846	ug/L	98
16) Methylene chloride	2.52	84	152376	47.028	ug/L	99
17) trans-1,2-Dichloroethene	2.78	96	142967	46.281	ug/L	98
18) Methyl tert-butyl Ether	2.78	73	450783	47.895	ug/L	99
19) 1,1-Dichloroethane	3.21	63	261525	48.352	ug/L	100
20) cis-1,2-Dichloroethene	3.94	96	156160	47.567	ug/L	97
22) 2-Butanone	4.00	43	215642	104.438	ug/L	99

Data Path : Z:\VOASRV\HPCHEM1\MSVOA V\DATA\VV093020\
 Data File : VV018579.D
 Acq On : 30 Sep 2020 19:24
 Operator : SY/MD
 Sample : VSTDCCC050EC
 Misc : 5.0mL/MSVOA V/WATER
 ALS Vial : 27 Sample Multiplier: 1

Instrument :
 MSVOA_V
 ClientSampleId :
 VSTD05095

Quant Time: Oct 01 07:43:06 2020
 Quant Method : Z:\VOASRV\HPCHEM1\MSVOA_V\METHOD\SOMVLM092920WMA.M
 Quant Title : VOC Analysis
 QLast Update : Thu Oct 01 07:39:17 2020
 Response via : Initial Calibration

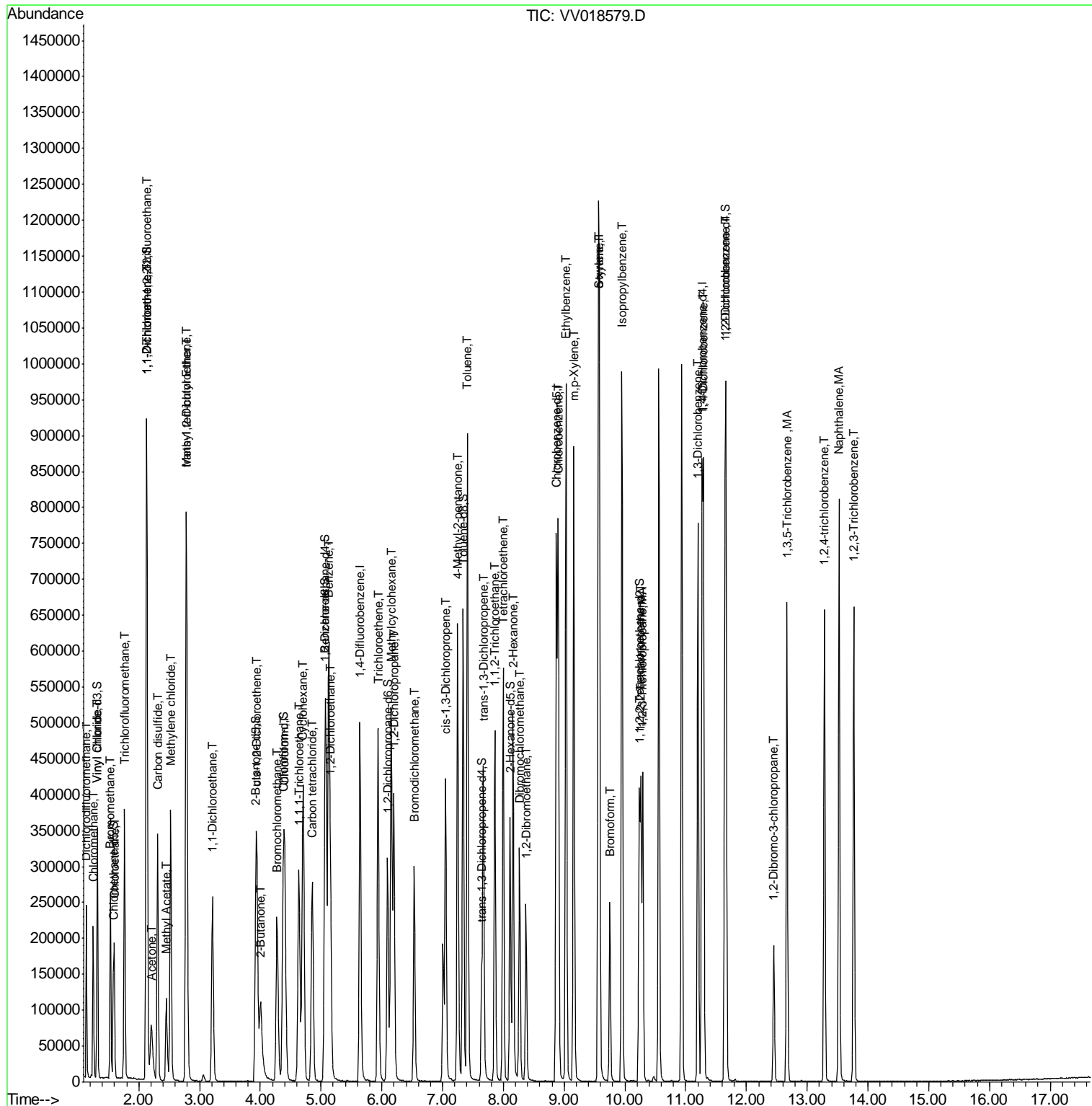
Internal Standards	R.T.	QIon	Response	Conc	Units	Dev(Min)
23) Bromochloromethane	4.28	128	83154	46.062	ug/L	98
25) Chloroform	4.40	83	265264	46.447	ug/L	99
27) 1,2-Dichloroethane	5.16	62	210725	47.338	ug/L	99
29) Cyclohexane	4.70	56	229888	51.206	ug/L	98
30) 1,1,1-Trichloroethane	4.63	97	241054	49.328	ug/L	98
31) Carbon tetrachloride	4.86	117	209103	47.678	ug/L	98
33) Benzene	5.13	78	590726	51.082	ug/L	100
34) Trichloroethene	5.94	95	165840	49.397	ug/L	98
35) Methylcyclohexane	6.15	83	215338	47.547	ug/L	98
37) 1,2-Dichloropropane	6.20	63	154954	52.227	ug/L	99
38) Bromodichloromethane	6.53	83	196114	49.357	ug/L	100
39) cis-1,3-Dichloropropene	7.05	75	239064	51.356	ug/L	100
40) 4-Methyl-2-pentanone	7.25	43	416126	108.693	ug/L	98
42) Toluene	7.41	91	634299	50.703	ug/L	99
44) trans-1,3-Dichloropropene	7.67	75	235545	51.511	ug/L	99
45) 1,1,2-Trichloroethane	7.86	97	147616	50.259	ug/L	98
46) Tetrachloroethene	8.00	164	128352	47.124	ug/L	97
48) 2-Hexanone	8.16	43	325333	108.913	ug/L	97
49) Dibromochloromethane	8.27	129	162952	48.507	ug/L	99
50) 1,2-Dibromoethane	8.37	107	157234	50.350	ug/L	99
51) Chlorobenzene	8.90	112	405720	47.939	ug/L	98
52) Ethylbenzene	9.03	91	670059	47.961	ug/L	100
53) m,p-Xylene	9.16	106	244164	45.222	ug/L	98
54) o-xylene	9.56	106	234727	45.919	ug/L	97
55) Styrene	9.58	104	410125	46.078	ug/L	99
56) Isopropylbenzene	9.95	105	617988	45.078	ug/L	100
58) 1,1,2,2-Tetrachloroethane	10.26	83	189151	45.689	ug/L	96
59) 1,2,3-Trichloropropane	10.30	75	166382	46.104	ug/L	98
61) Bromoform	9.75	173	111215	47.157	ug/L	98
62) 1,3-Dichlorobenzene	11.20	146	314542	47.338	ug/L	99
63) 1,4-Dichlorobenzene	11.29	146	326204	47.675	ug/L	99
65) 1,2-Dichlorobenzene	11.67	146	311866	47.443	ug/L	99
66) 1,2-Dibromo-3-chloropropan	12.45	75	43654	48.647	ug/L	99
67) 1,3,5-Trichlorobenzene	12.67	180	209395	45.494	ug/L	99
68) 1,2,4-trichlorobenzene	13.28	180	198450	46.334	ug/L	99
69) Naphthalene	13.52	128	613624	50.050	ug/L	99
70) 1,2,3-Trichlorobenzene	13.77	180	199952	46.505	ug/L	100

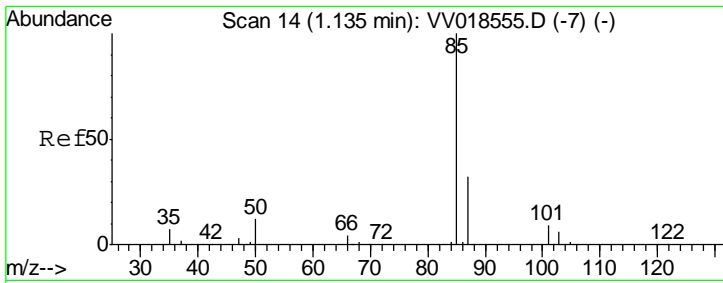
(#) = qualifier out of range (m) = manual integration (+) = signals summed

Data Path : Z:\VOASRV\HPCHEM1\MSVOA V\DATA\VV093020\
 Data File : VV018579.D
 Acq On : 30 Sep 2020 19:24
 Operator : SY/MD
 Sample : VSTDCCC050EC
 Misc : 5.0mL/MSVOA V/WATER
 ALS Vial : 27 Sample Multiplier: 1

Instrument :
 MSVOA_V
 Client Sampled :
 VSTD05095

Quant Time: Oct 01 07:43:06 2020
 Quant Method : Z:\VOASRV\HPCHEM1\MSVOA_V\METHOD\SOMVLM092920WMA.M
 Quant Title : VOC Analysis
 QLast Update : Thu Oct 01 07:39:17 2020
 Response via : Initial Calibration

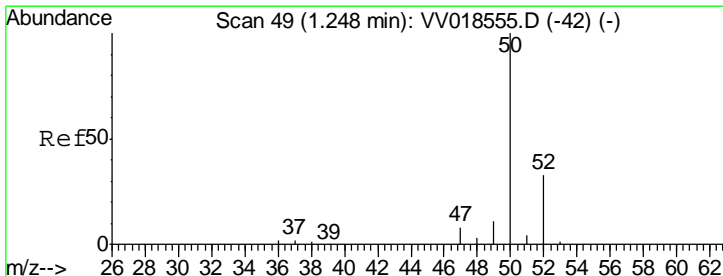
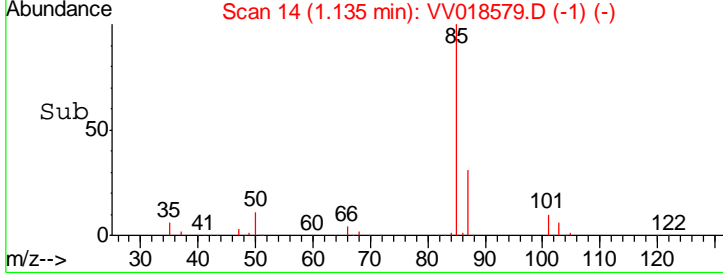
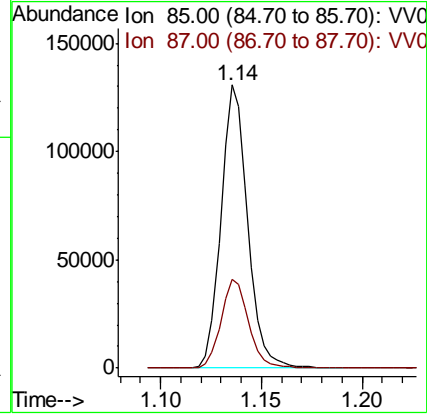
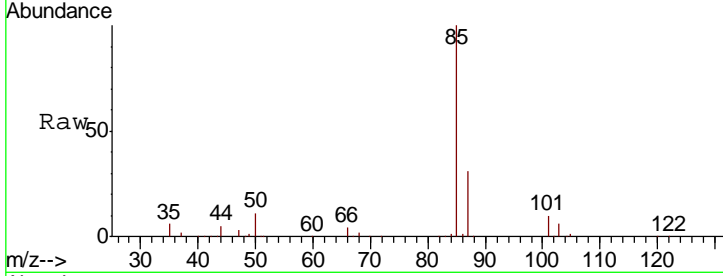




#2
 Dichlorodifluoromethane
 Concen: 40.701 ug/L
 RT: 1.14 min Scan# 14
 Delta R.T. 0.00 min
 Lab File: VV018579.D
 Acq: 30 Sep 2020 19:24

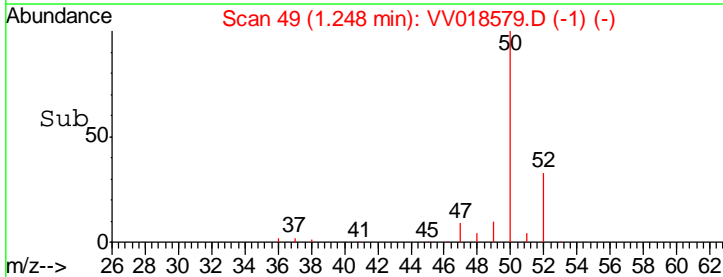
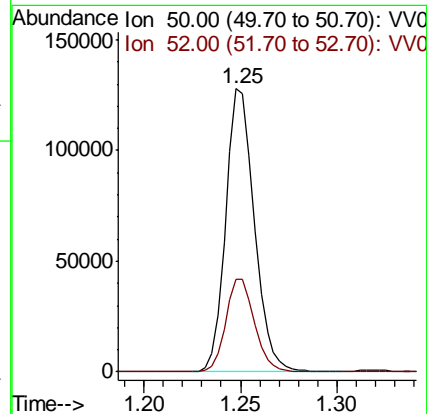
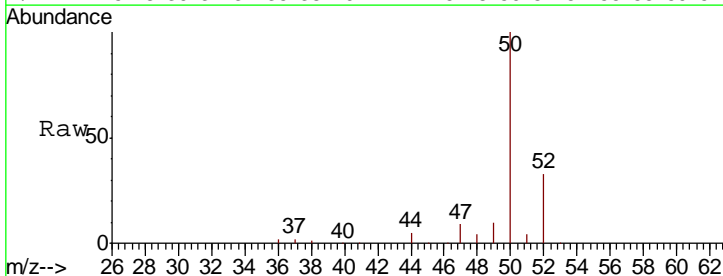
Instrument :
 MSVOA_V
 ClientSampled :
 VSTD05095

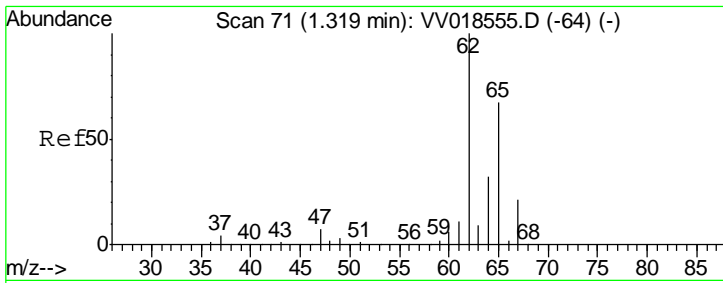
Tgt Ion: 85 Resp: 119682
 Ion Ratio Lower Upper
 85 100
 87 32.3 25.5 38.3



#3
 Chloromethane
 Concen: 41.858 ug/L
 RT: 1.25 min Scan# 49
 Delta R.T. 0.00 min
 Lab File: VV018579.D
 Acq: 30 Sep 2020 19:24

Tgt Ion: 50 Resp: 131701
 Ion Ratio Lower Upper
 50 100
 52 32.7 22.7 42.1

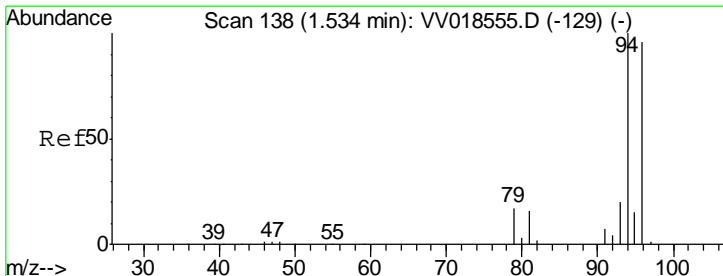
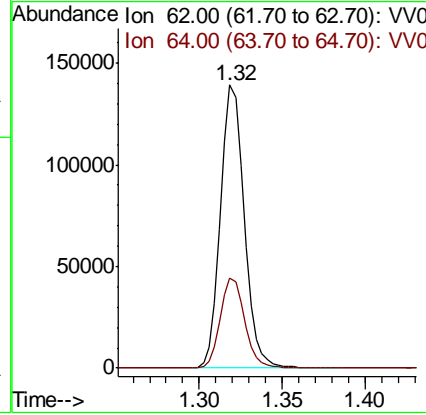
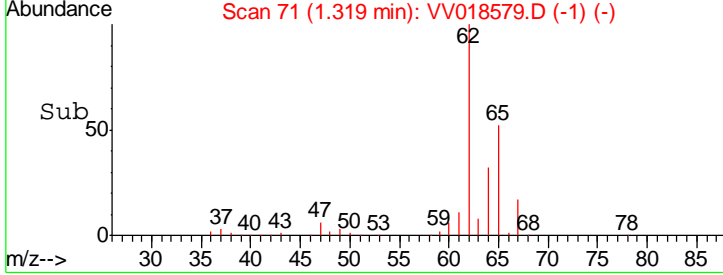
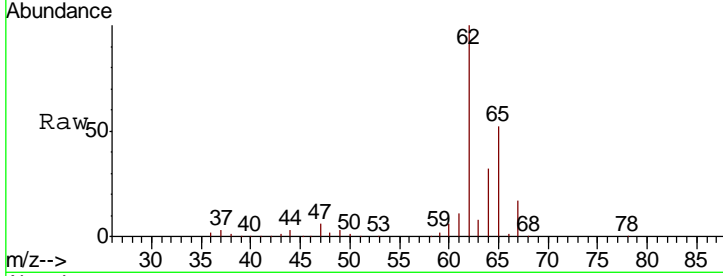




#5
 Vinyl chloride
 Concen: 42.056 ug/L
 RT: 1.32 min Scan# 71
 Delta R.T. 0.00 min
 Lab File: VV018579.D
 Acq: 30 Sep 2020 19:24

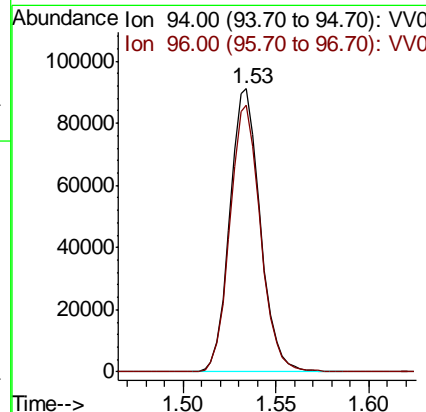
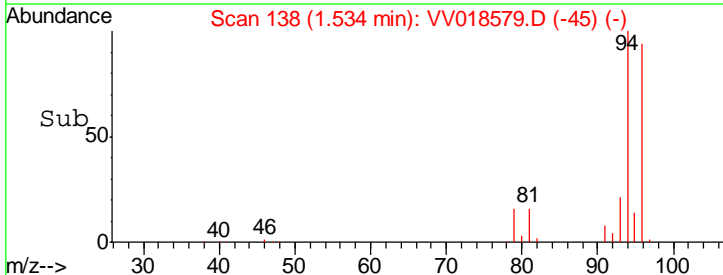
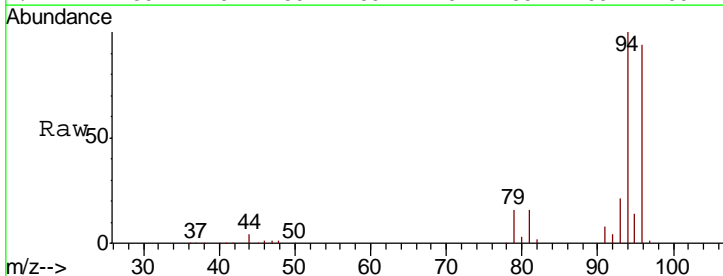
Instrument :
 MSVOA_V
ClientSampled :
 VSTD05095

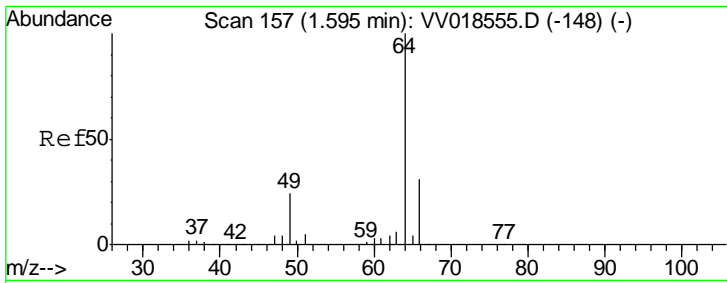
Tgt Ion: 62 Resp: 139122
 Ion Ratio Lower Upper
 62 100
 64 32.0 22.9 42.5



#6
 Bromomethane
 Concen: 46.060 ug/L
 RT: 1.53 min Scan# 138
 Delta R.T. 0.00 min
 Lab File: VV018579.D
 Acq: 30 Sep 2020 19:24

Tgt Ion: 94 Resp: 103703
 Ion Ratio Lower Upper
 94 100
 96 94.4 67.5 125.4

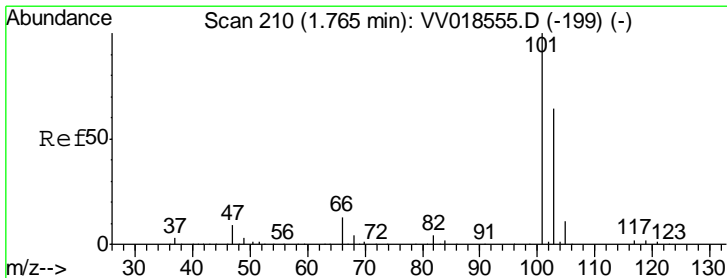
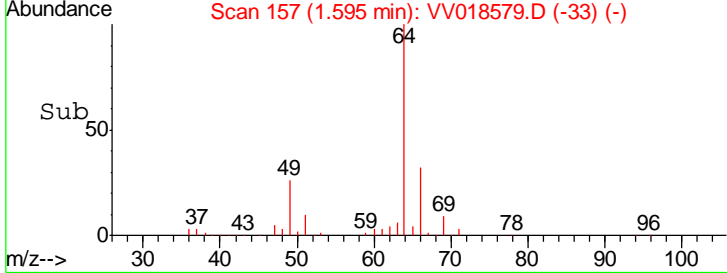
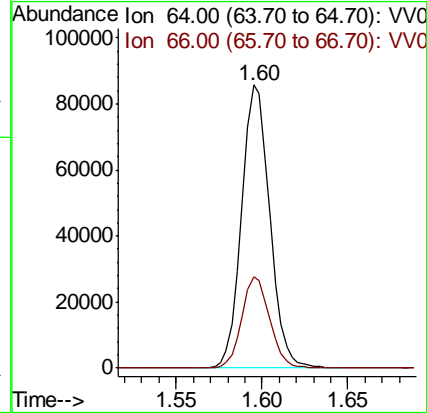
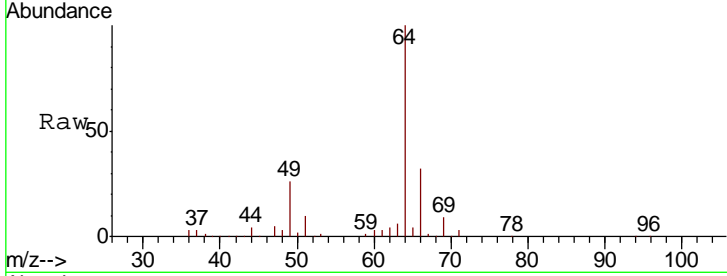




#8
 Chloroethane
 Concen: 48.122 ug/L
 RT: 1.60 min Scan# 157
 Delta R.T. 0.00 min
 Lab File: VV018579.D
 Acq: 30 Sep 2020 19:24

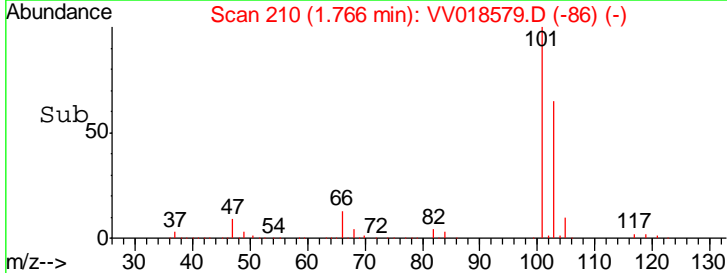
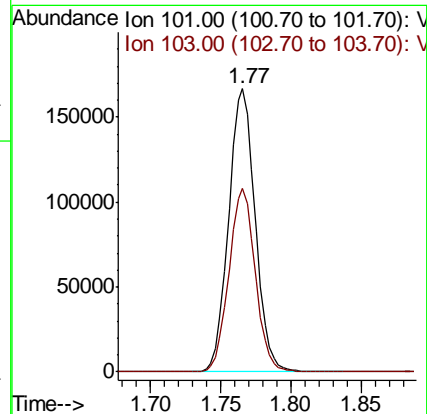
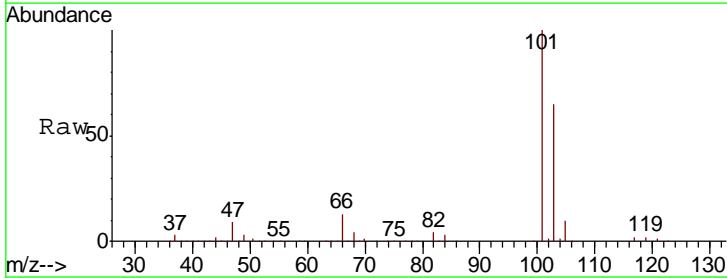
Instrument :
 MSVOA_V
 ClientSampled :
 VSTD05095

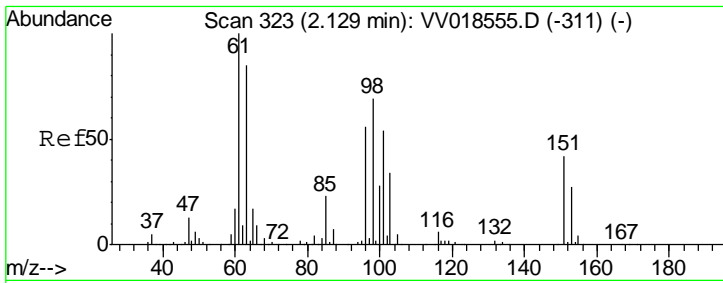
Tgt Ion	Resp	Lower	Upper
64	100		
66	32.4	22.8	42.4



#9
 Trichlorofluoromethane
 Concen: 43.514 ug/L
 RT: 1.77 min Scan# 210
 Delta R.T. 0.00 min
 Lab File: VV018579.D
 Acq: 30 Sep 2020 19:24

Tgt Ion	Resp	Lower	Upper
101	100		
103	64.5	51.9	77.9

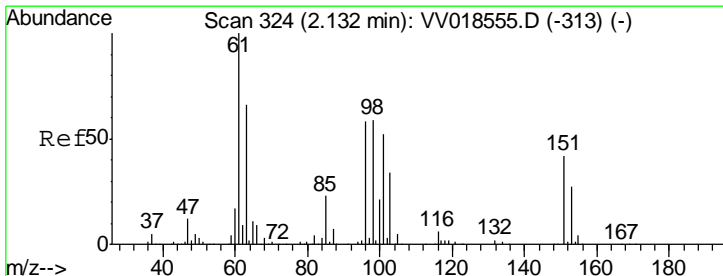
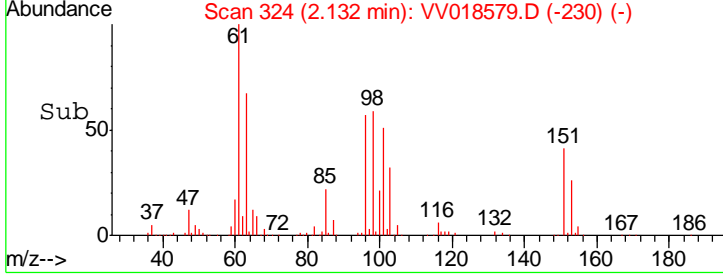
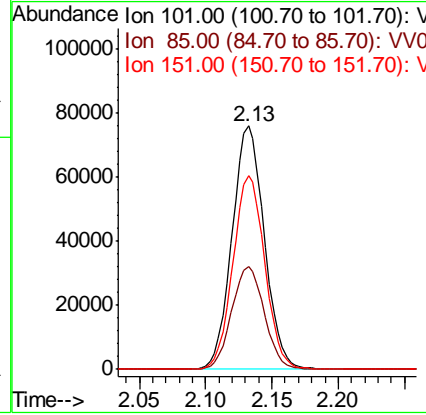
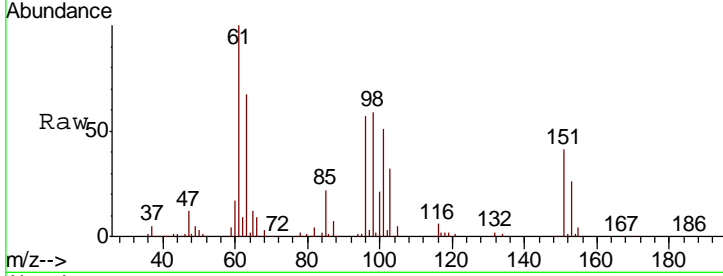




#10
 1,1,2-Trichloro-1,2,2-trifluoroethane
 Concen: 45.582 ug/L
 RT: 2.13 min Scan# 324
 Delta R.T. 0.00 min
 Lab File: VV018579.D
 Acq: 30 Sep 2020 19:24

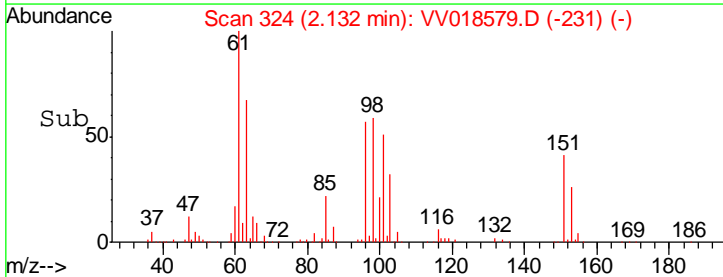
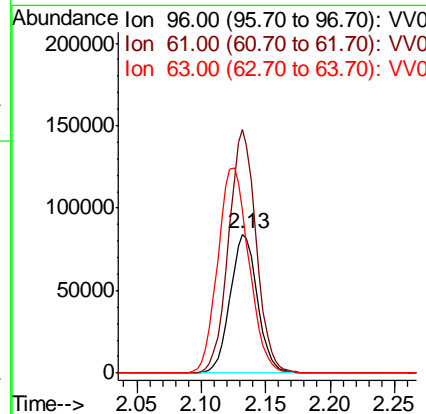
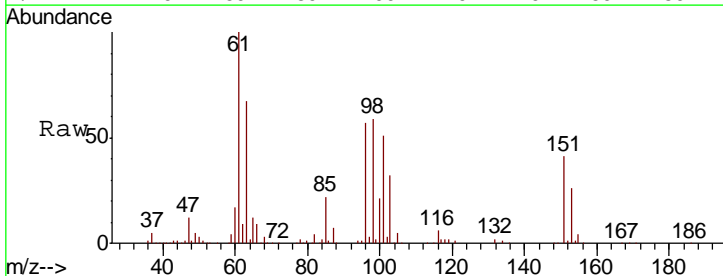
Instrument : MSVOA_V
 ClientSampled : VSTD05095

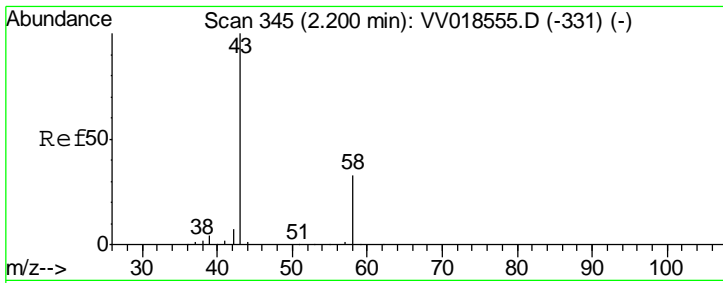
Tgt Ion	Resp	Lower	Upper
101	100		
85	42.6	34.6	52.0
151	78.4	64.3	96.5



#12
 1,1-Dichloroethene
 Concen: 45.562 ug/L
 RT: 2.13 min Scan# 324
 Delta R.T. 0.00 min
 Lab File: VV018579.D
 Acq: 30 Sep 2020 19:24

Tgt Ion	Resp	Lower	Upper
96	100		
61	175.5	122.8	228.1
63	117.3	91.9	170.7

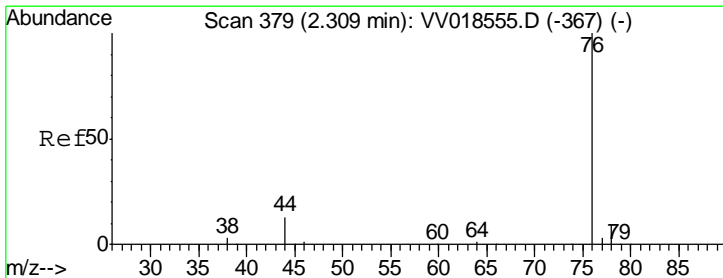
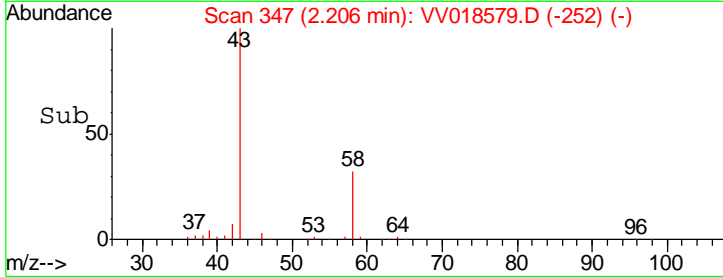
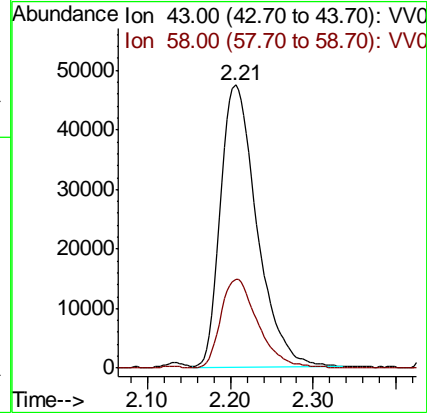
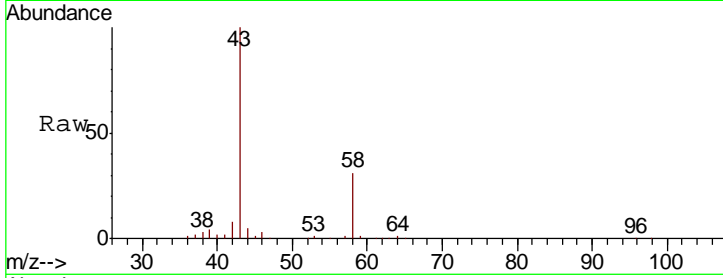




#13
 Acetone
 Concen: 88.425 ug/L
 RT: 2.21 min Scan# 347
 Delta R.T. 0.01 min
 Lab File: VV018579.D
 Acq: 30 Sep 2020 19:24

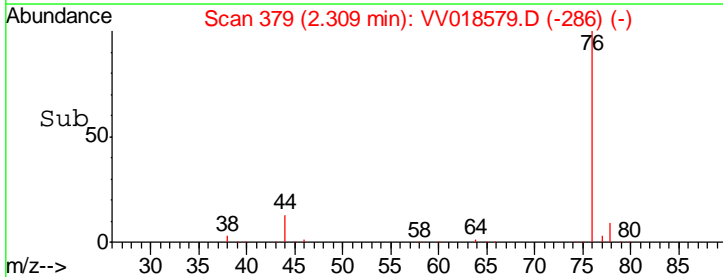
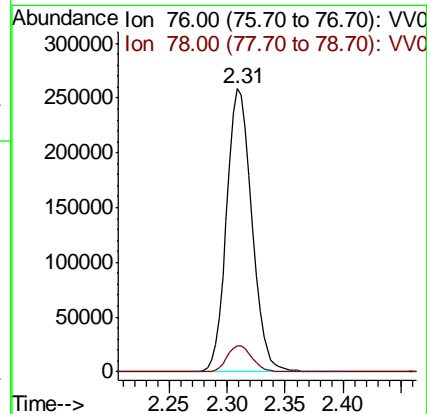
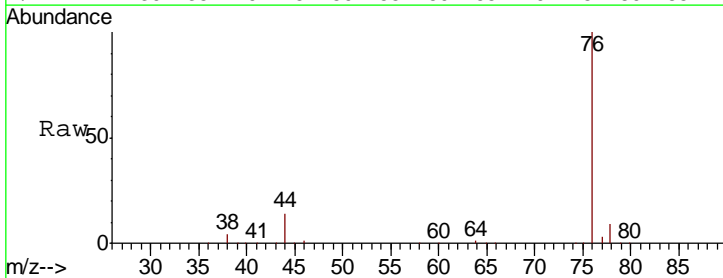
Instrument :
 MSVOA_V
 ClientSampled :
 VSTD05095

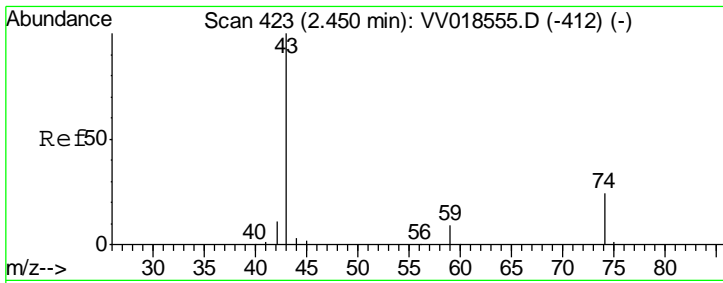
Tot Ion: 43 Resp: 144530
 Ion Ratio Lower Upper
 43 100
 58 32.5 0.0 64.0



#14
 Carbon disulfide
 Concen: 44.622 ug/L
 RT: 2.31 min Scan# 379
 Delta R.T. 0.00 min
 Lab File: VV018579.D
 Acq: 30 Sep 2020 19:24

Tgt Ion: 76 Resp: 390230
 Ion Ratio Lower Upper
 76 100
 78 9.3 7.1 10.7

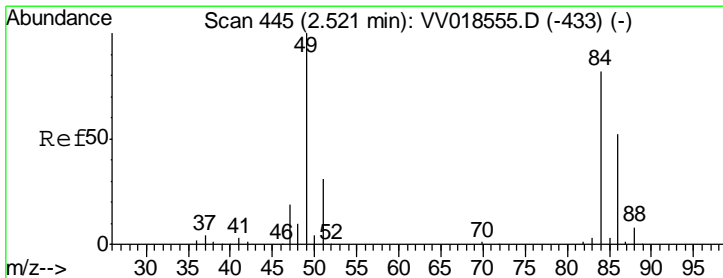
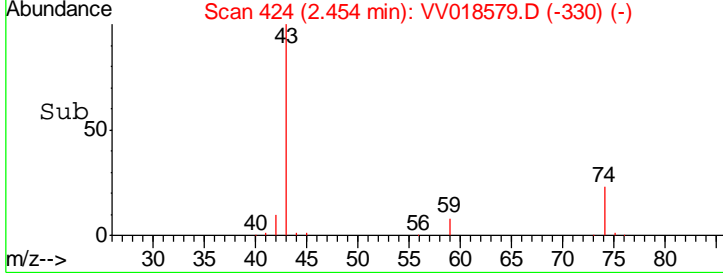
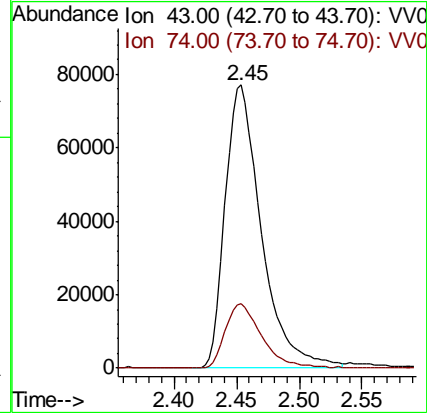
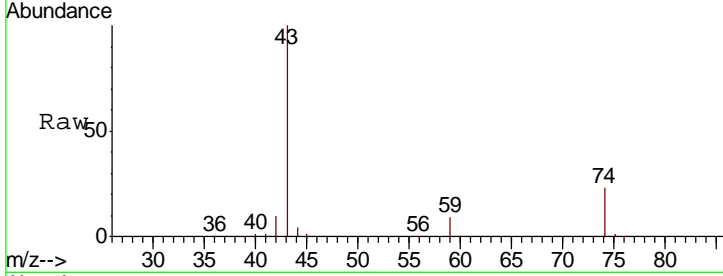




#15
 Methyl Acetate
 Concen: 48.846 ug/L
 RT: 2.45 min Scan# 424
 Delta R.T. 0.00 min
 Lab File: VV018579.D
 Acq: 30 Sep 2020 19:24

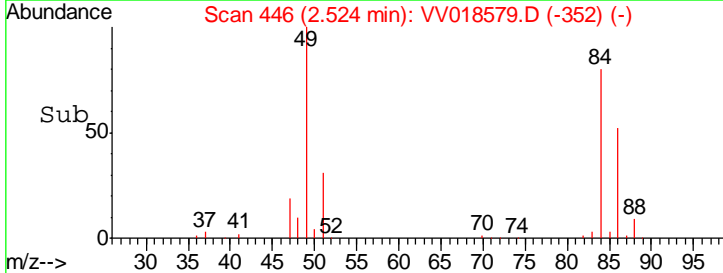
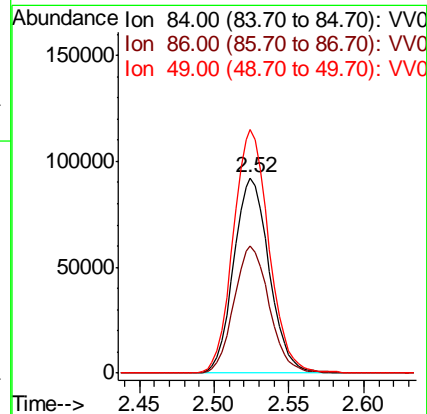
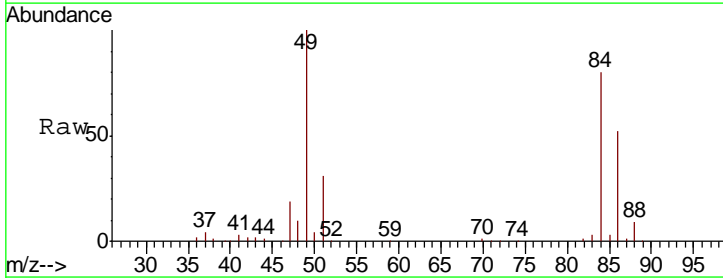
Instrument :
 MSVOA_V
 ClientSampled :
 VSTD05095

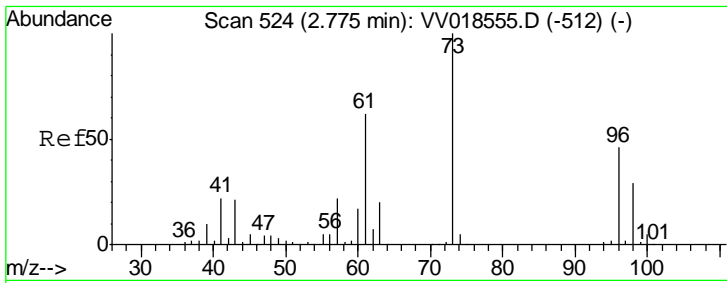
Tgt Ion	Resp	Lower	Upper
43	153813		
74	22.9	19.2	28.8



#16
 Methylene chloride
 Concen: 47.028 ug/L
 RT: 2.52 min Scan# 446
 Delta R.T. 0.00 min
 Lab File: VV018579.D
 Acq: 30 Sep 2020 19:24

Tgt Ion	Resp	Lower	Upper
84	152376		
86	65.2	46.2	85.8
49	124.9	86.6	160.8

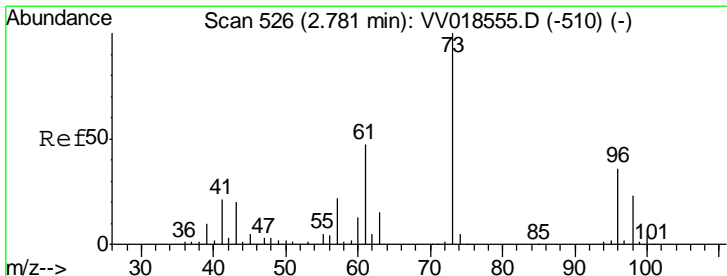
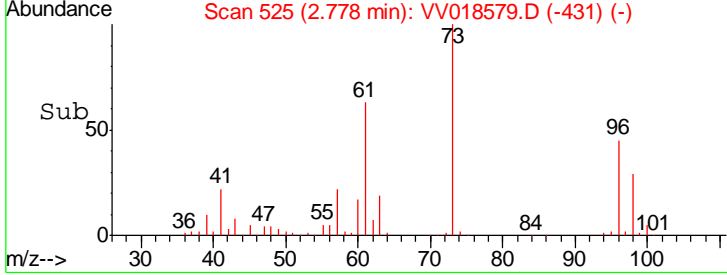
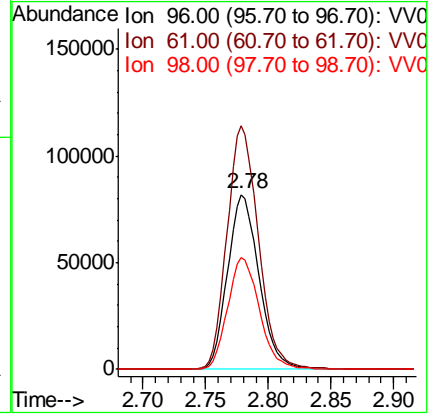
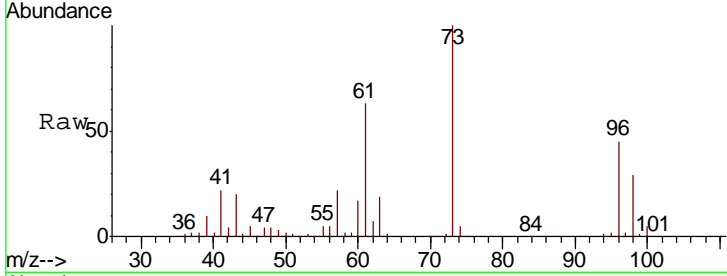




#17
 trans-1,2-Dichloroethene
 Concen: 46.281 ug/L
 RT: 2.78 min Scan# 525
 Delta R.T. 0.00 min
 Lab File: VV018579.D
 Acq: 30 Sep 2020 19:24

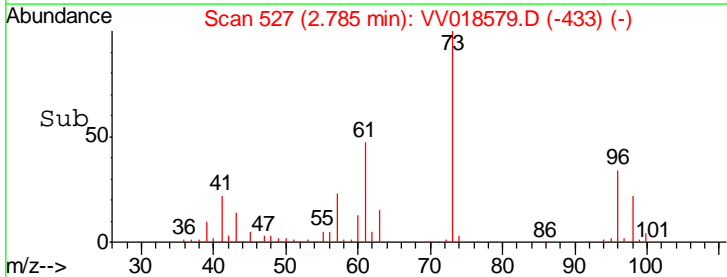
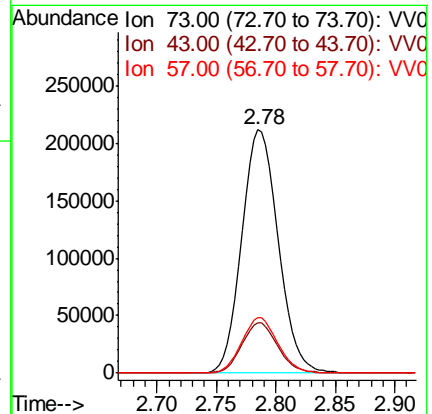
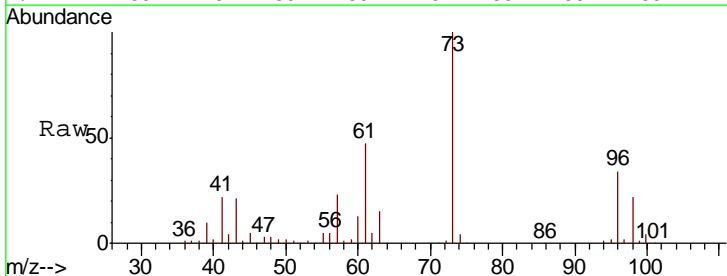
Instrument :
 MSVOA_V
 ClientSampled :
 VSTD05095

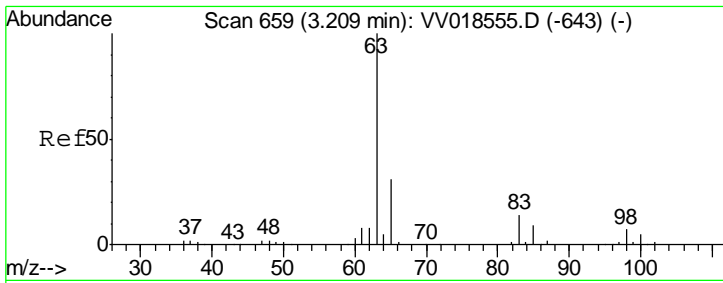
Tgt Ion	Resp	Lower	Upper
96	142967		
61	139.4	95.0	176.4
98	63.9	44.6	82.8



#18
 Methyl tert-butyl Ether
 Concen: 47.895 ug/L
 RT: 2.78 min Scan# 527
 Delta R.T. 0.00 min
 Lab File: VV018579.D
 Acq: 30 Sep 2020 19:24

Tgt Ion	Resp	Lower	Upper
73	450783		
43	20.1	15.9	23.9
57	22.5	17.5	26.3

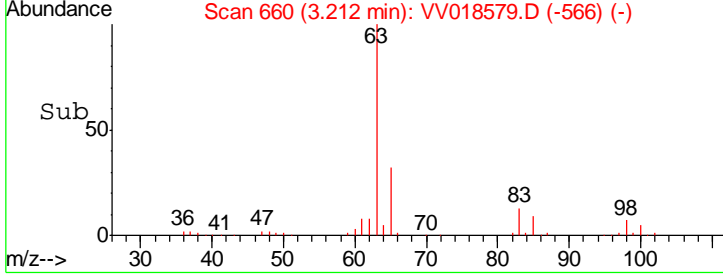
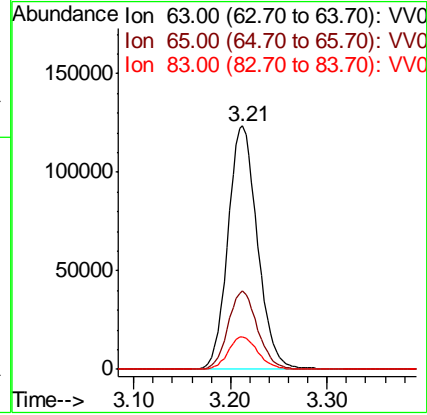
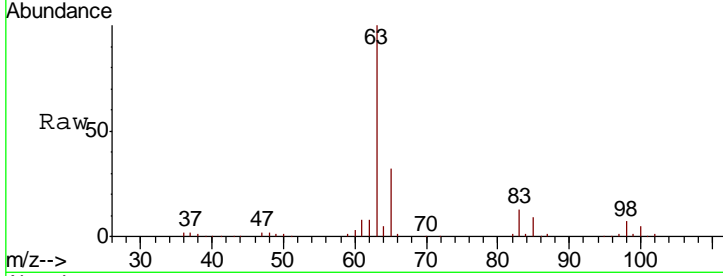




#19
 1,1-Dichloroethane
 Concen: 48.352 ug/L
 RT: 3.21 min Scan# 660
 Delta R.T. 0.00 min
 Lab File: VV018579.D
 Acq: 30 Sep 2020 19:24

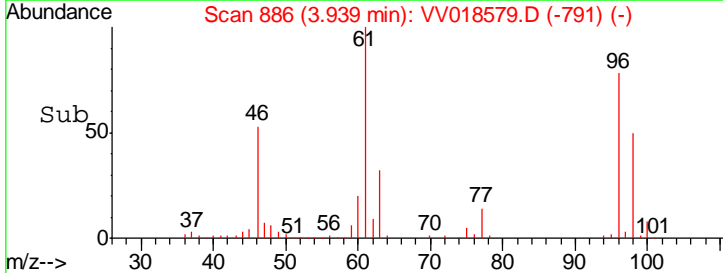
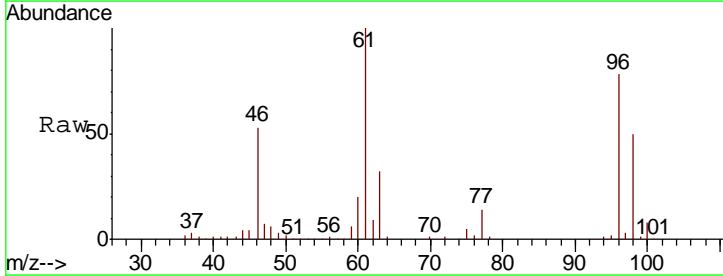
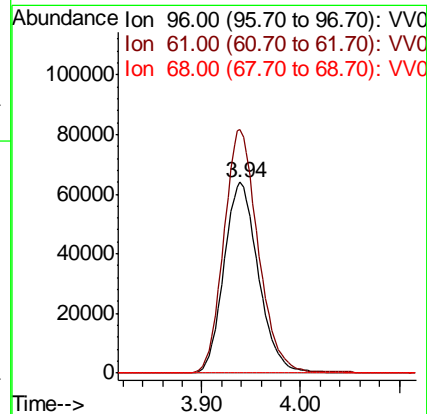
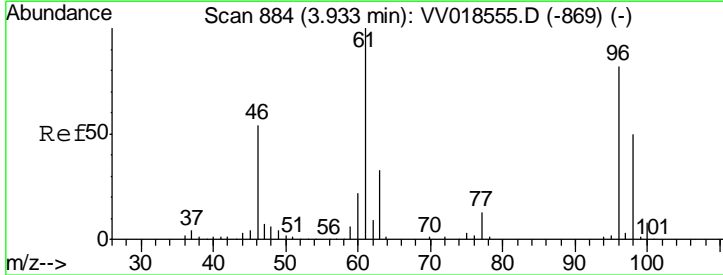
Instrument : MSVOA_V
 ClientSampled : VSTD05095

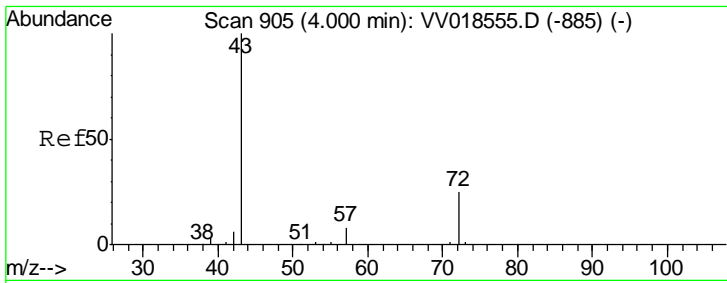
Tgt Ion	Resp	Lower	Upper
63	100		
65	32.0	22.3	41.3
83	13.3	9.3	17.3



#20
 cis-1,2-Dichloroethene
 Concen: 47.567 ug/L
 RT: 3.94 min Scan# 886
 Delta R.T. 0.01 min
 Lab File: VV018579.D
 Acq: 30 Sep 2020 19:24

Tgt Ion	Resp	Lower	Upper
96	100		
61	127.7	86.8	161.2
68	0.0	0.0	0.0

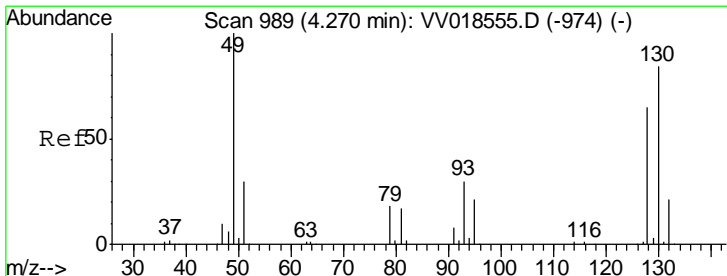
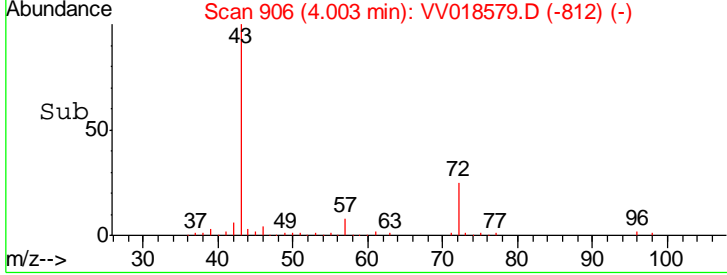
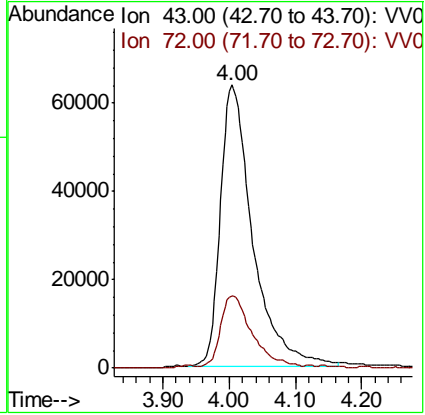
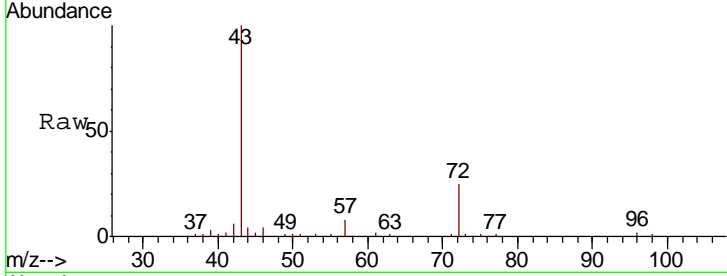




#22
 2-Butanone
 Concen: 104.438 ug/L
 RT: 4.00 min Scan# 906
 Delta R.T. 0.00 min
 Lab File: VV018579.D
 Acq: 30 Sep 2020 19:24

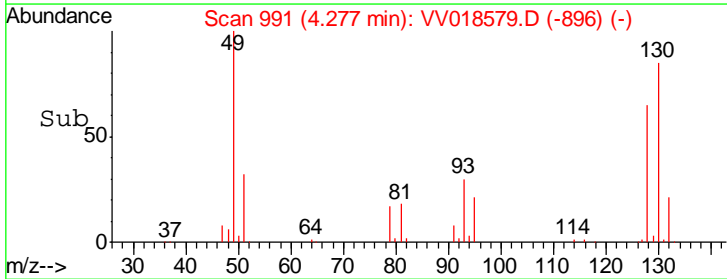
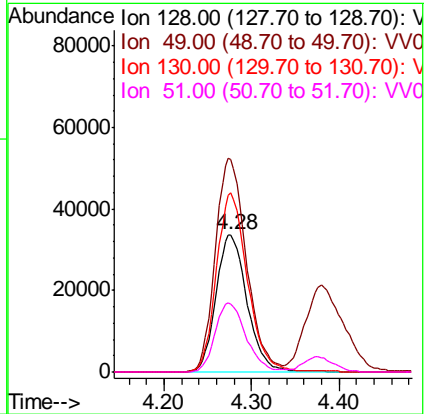
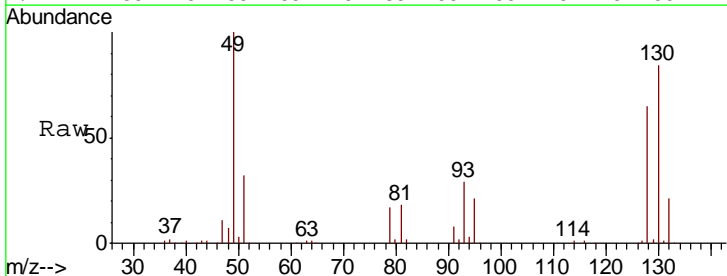
Instrument :
 MSVOA_V
ClientSampled :
 VSTD05095

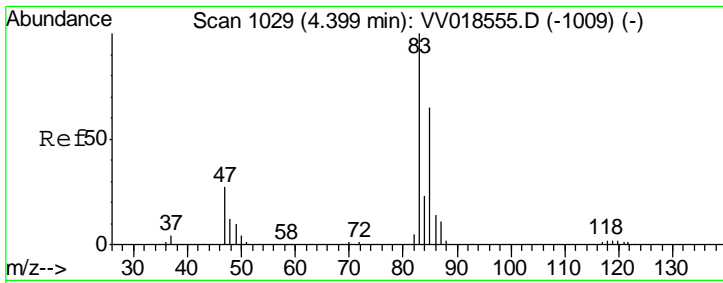
Tgt Ion	Resp	Lower	Upper
43	100		
72	23.7	12.1	36.3



#23
 Bromochloromethane
 Concen: 46.062 ug/L
 RT: 4.28 min Scan# 991
 Delta R.T. 0.01 min
 Lab File: VV018579.D
 Acq: 30 Sep 2020 19:24

Tgt Ion	Resp	Lower	Upper
128	100		
49	154.5	105.1	195.1
130	130.2	90.0	167.2
51	49.5	38.6	57.8

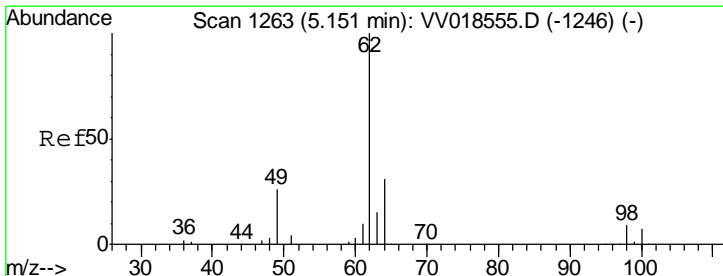
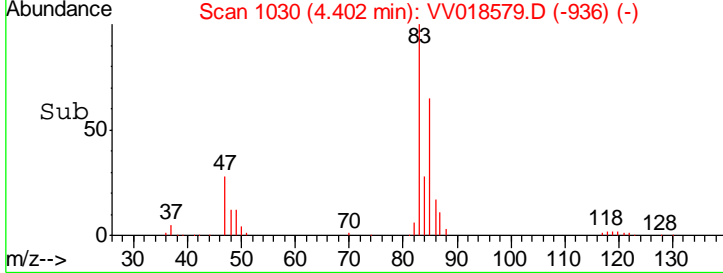
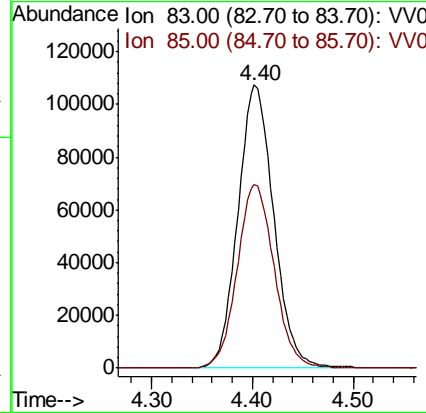
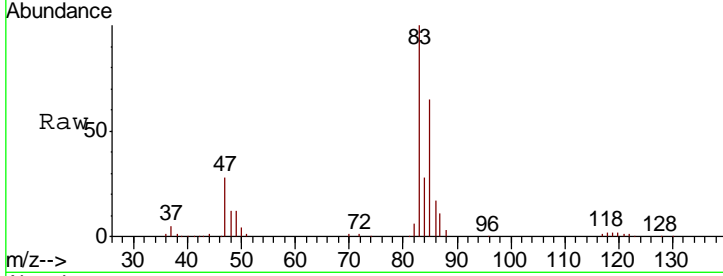




#25
 Chloroform
 Concen: 46.447 ug/L
 RT: 4.40 min Scan# 1030
 Delta R.T. 0.00 min
 Lab File: VV018579.D
 Acq: 30 Sep 2020 19:24

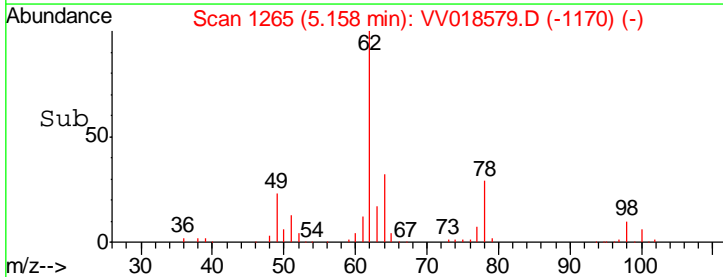
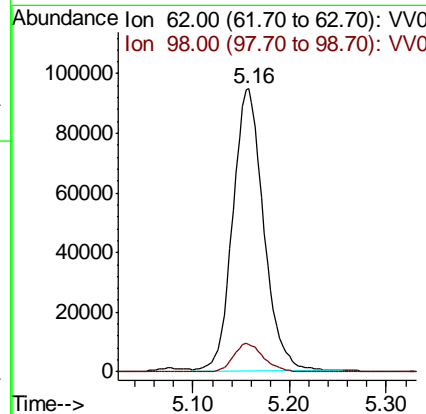
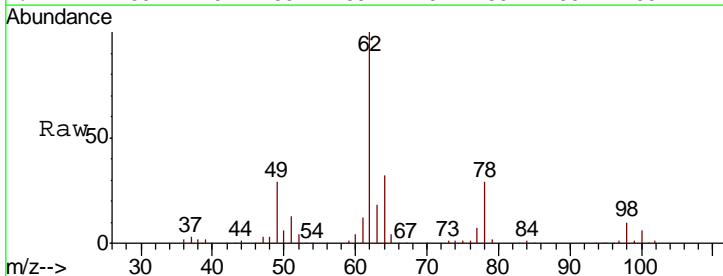
Instrument : MSVOA_V
 ClientSampled : VSTD05095

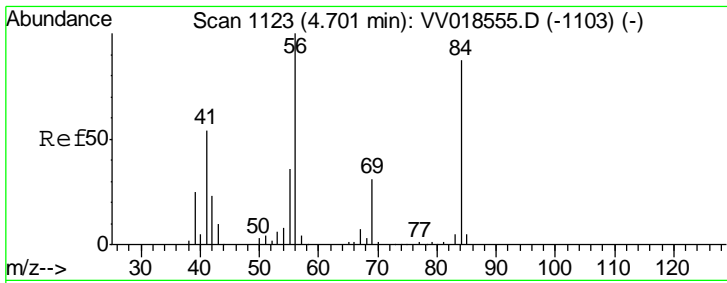
Tgt Ion	Resp	Lower	Upper
83	100		
85	65.0	46.2	85.8



#27
 1,2-Dichloroethane
 Concen: 47.338 ug/L
 RT: 5.16 min Scan# 1265
 Delta R.T. 0.01 min
 Lab File: VV018579.D
 Acq: 30 Sep 2020 19:24

Tgt Ion	Resp	Lower	Upper
62	100		
98	9.9	7.7	11.5

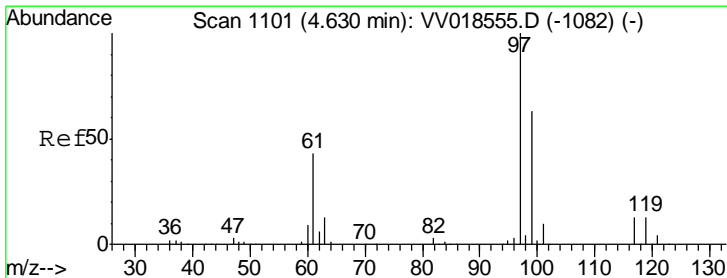
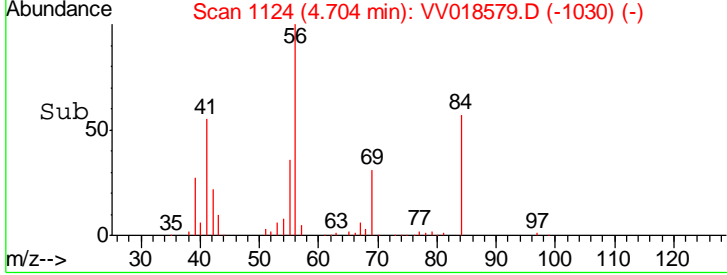
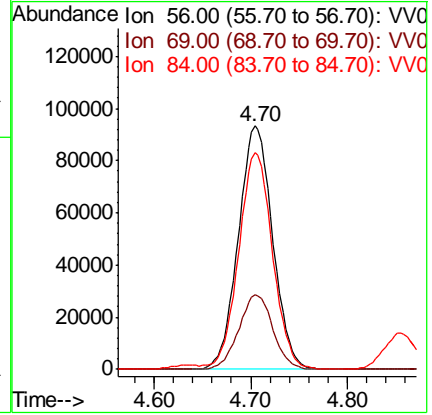
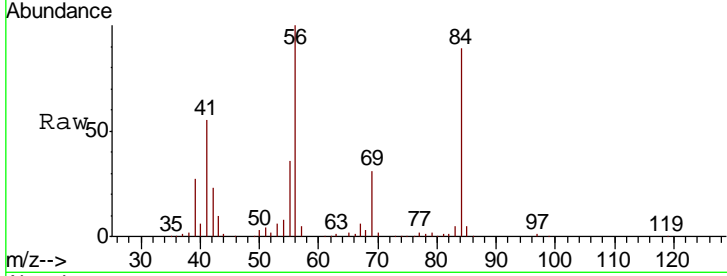




#29
 Cyclohexane
 Concen: 51.206 ug/L
 RT: 4.70 min Scan# 1124
 Delta R.T. 0.00 min
 Lab File: VV018579.D
 Acq: 30 Sep 2020 19:24

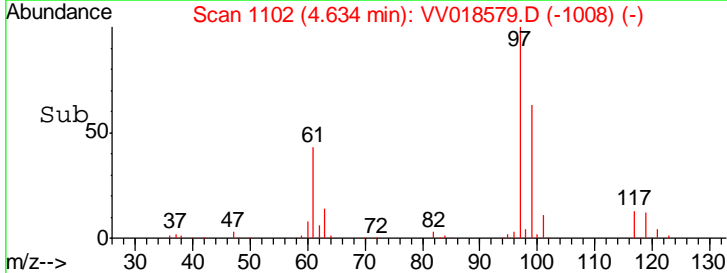
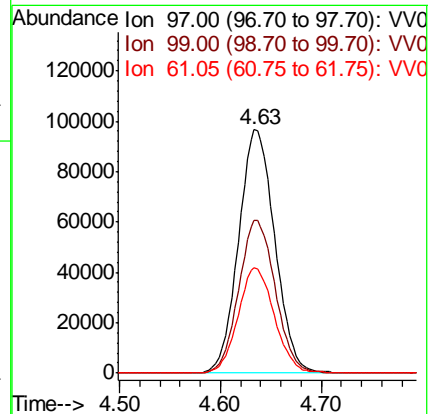
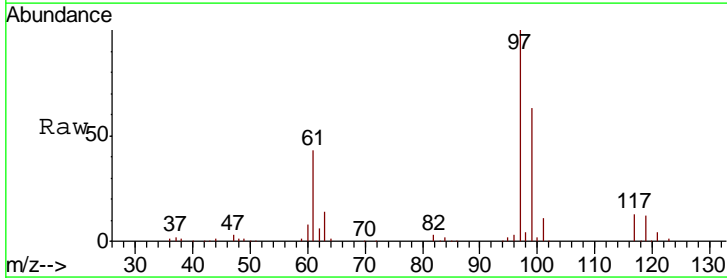
Instrument :
 MSVOA_V
 ClientSampled :
 VSTD05095

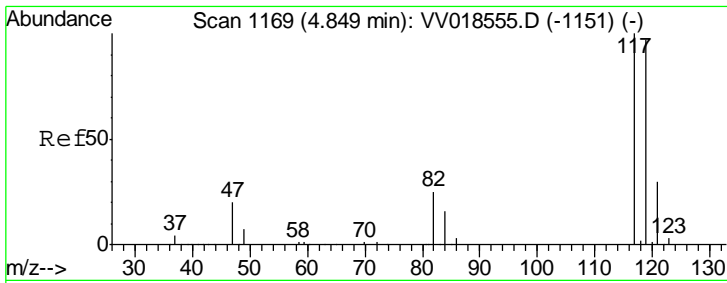
Tgt Ion	Resp	Lower	Upper
56	100		
69	30.4	24.8	37.2
84	87.5	72.2	108.4



#30
 1,1,1-Trichloroethane
 Concen: 49.328 ug/L
 RT: 4.63 min Scan# 1102
 Delta R.T. 0.00 min
 Lab File: VV018579.D
 Acq: 30 Sep 2020 19:24

Tgt Ion	Resp	Lower	Upper
97	100		
99	63.1	51.4	77.0
61	43.6	33.9	50.9

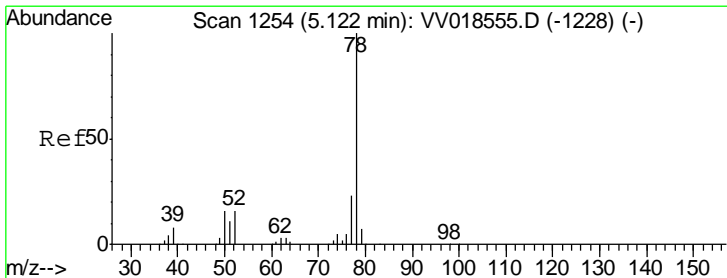
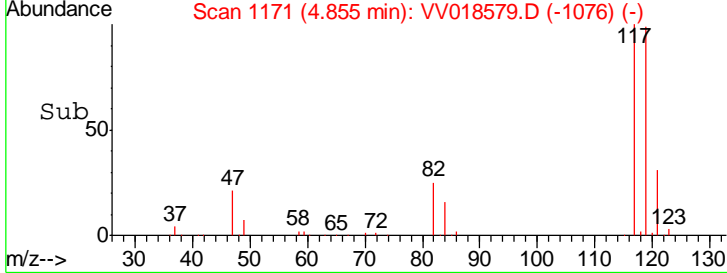
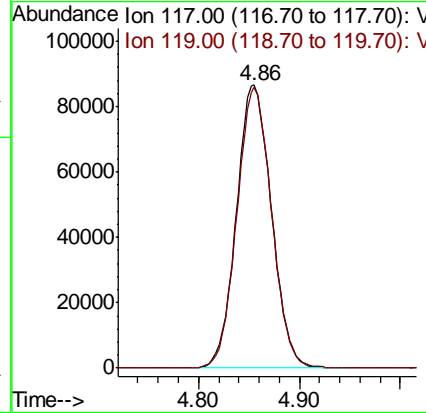
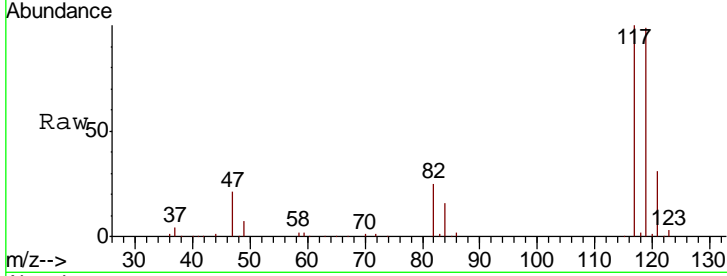




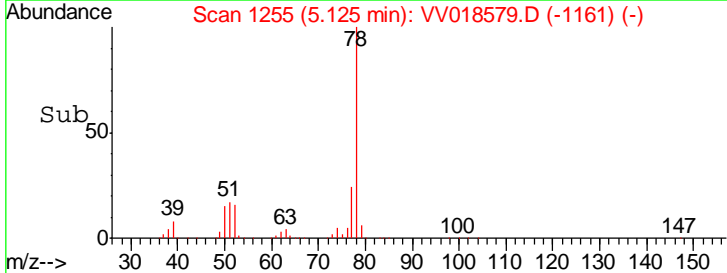
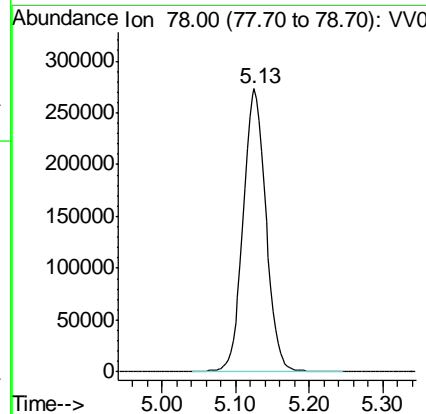
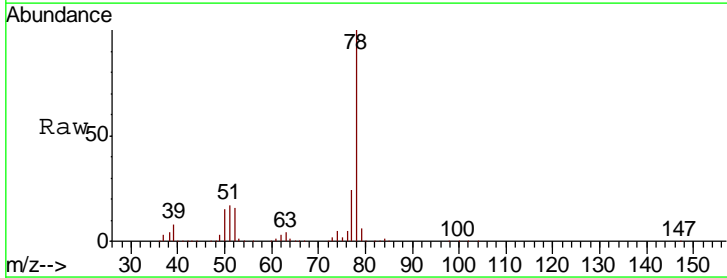
#31
 Carbon tetrachloride
 Concen: 47.678 ug/L
 RT: 4.86 min Scan# 1171
 Delta R.T. 0.01 min
 Lab File: VV018579.D
 Acq: 30 Sep 2020 19:24

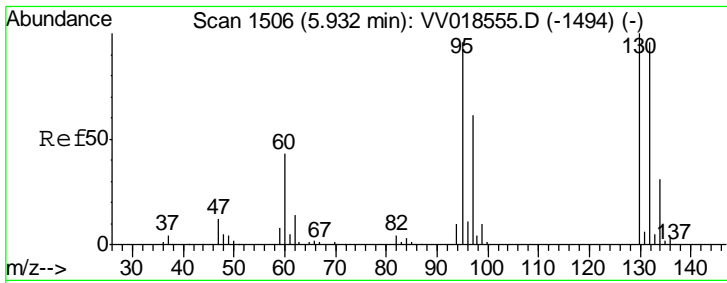
Instrument : MSVOA_V
 ClientSampled : VSTD05095

Tgt Ion: 117 Resp: 209103
 Ion Ratio Lower Upper
 117 100
 119 97.8 77.0 115.6



#33
 Benzene
 Concen: 51.082 ug/L
 RT: 5.13 min Scan# 1255
 Delta R.T. 0.00 min
 Lab File: VV018579.D
 Acq: 30 Sep 2020 19:24
 Tgt Ion: 78 Resp: 590726

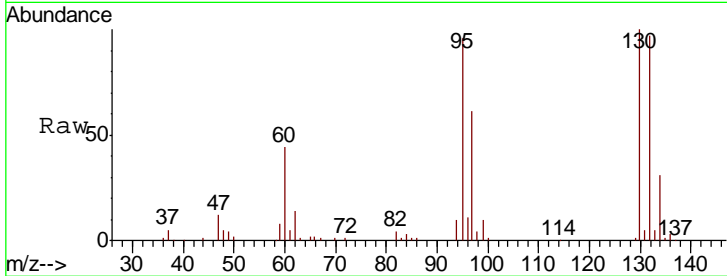




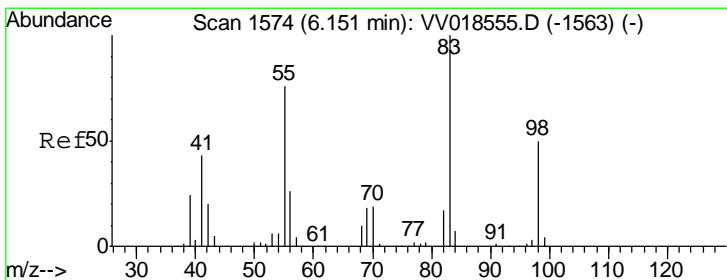
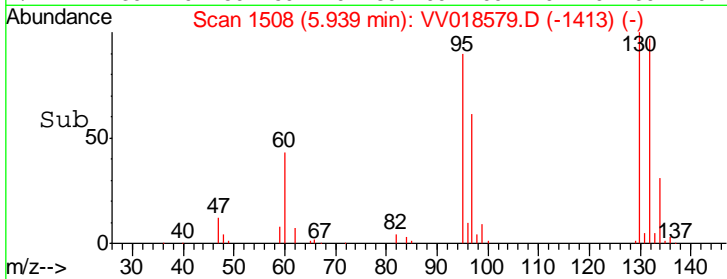
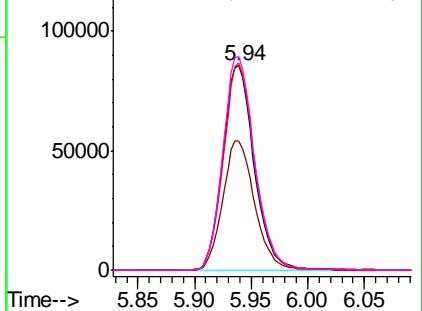
#34
 Trichloroethene
 Concen: 49.397 ug/L
 RT: 5.94 min Scan# 1508
 Delta R.T. 0.01 min
 Lab File: VV018579.D
 Acq: 30 Sep 2020 19:24

Instrument :
 MSVOA_V
 ClientSampled :
 VSTD05095

Tgt Ion	Resp	Lower	Upper
95	165840		
97	63.4	45.9	85.3
132	101.3	70.8	131.4
130	104.5	75.3	139.8

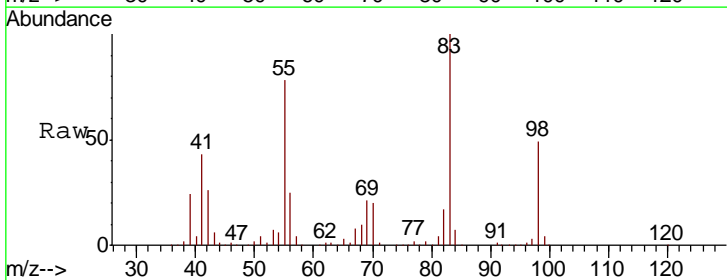


Abundance Ion 95.00 (94.70 to 95.70): VV018579.D (-1413) (-)
 Ion 97.00 (96.70 to 97.70): VV018579.D (-1413) (-)
 Ion 132.00 (131.70 to 132.70): VV018579.D (-1413) (-)
 Ion 130.00 (129.70 to 130.70): VV018579.D (-1413) (-)

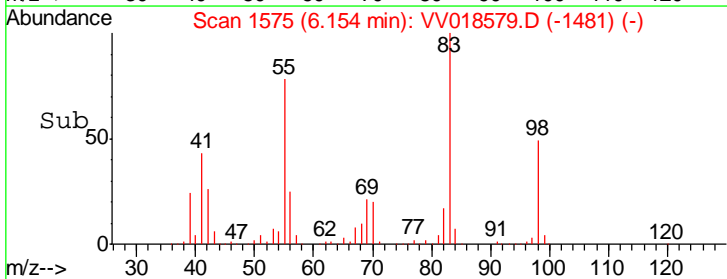
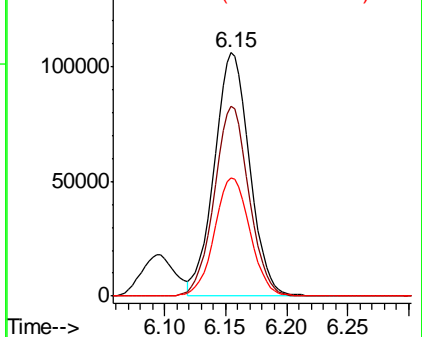


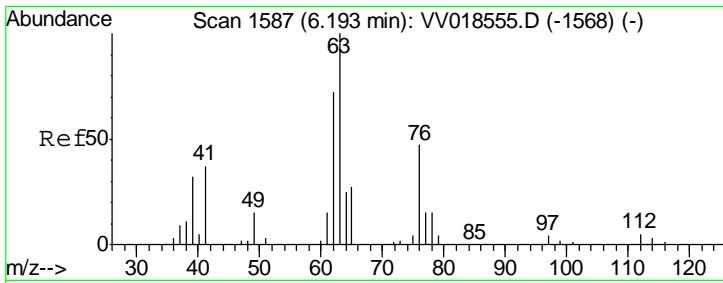
#35
 Methylcyclohexane
 Concen: 47.547 ug/L
 RT: 6.15 min Scan# 1575
 Delta R.T. 0.00 min
 Lab File: VV018579.D
 Acq: 30 Sep 2020 19:24

Tgt Ion	Resp	Lower	Upper
83	215338		
55	76.9	60.1	90.1
98	49.2	40.2	60.4



Abundance Ion 83.00 (82.70 to 83.70): VV018579.D (-1481) (-)
 Ion 55.00 (54.70 to 55.70): VV018579.D (-1481) (-)
 Ion 98.00 (97.70 to 98.70): VV018579.D (-1481) (-)

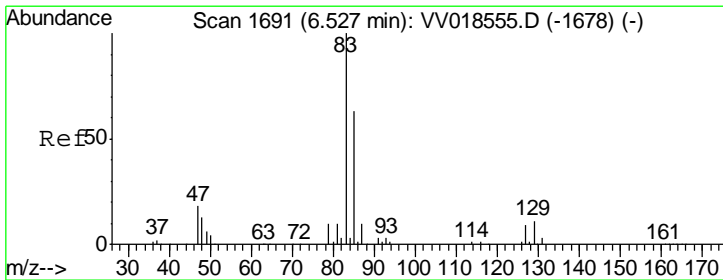
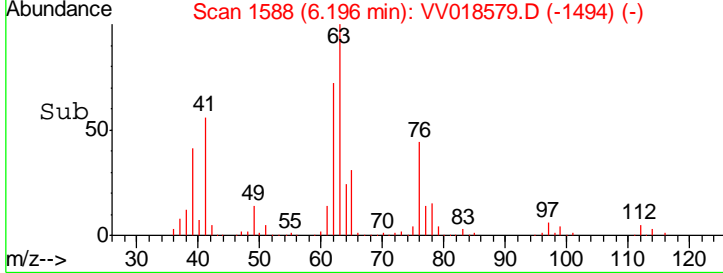
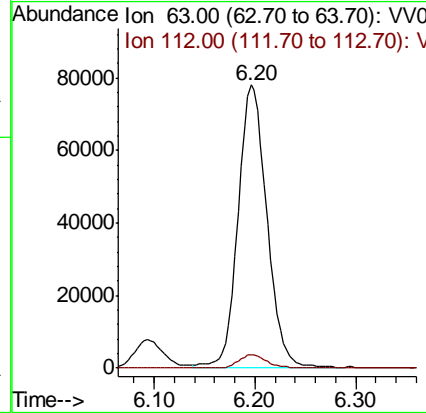
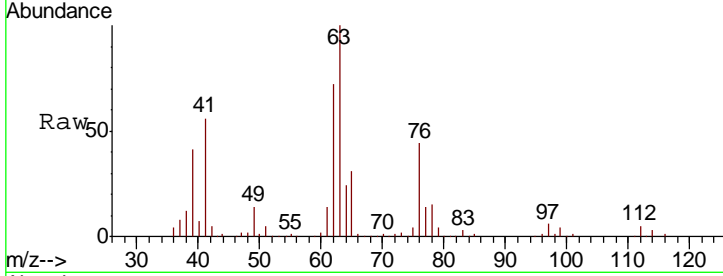




#37
 1,2-Dichloropropane
 Concen: 52.227 ug/L
 RT: 6.20 min Scan# 1588
 Delta R.T. 0.00 min
 Lab File: VV018579.D
 Acq: 30 Sep 2020 19:24

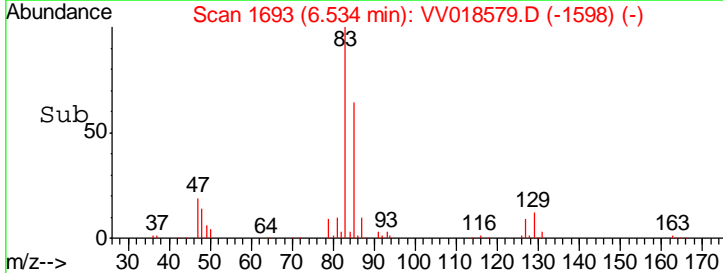
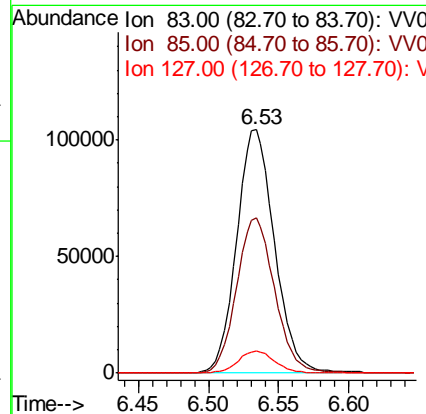
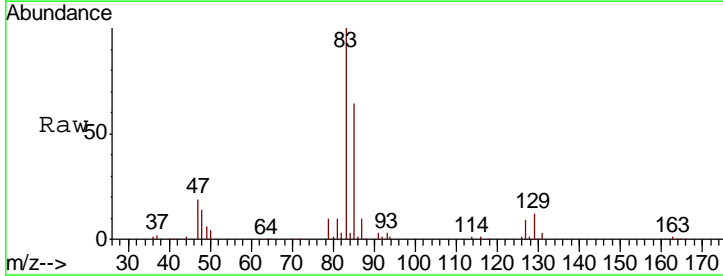
Instrument :
 MSVOA_V
 ClientSampled :
 VSTD05095

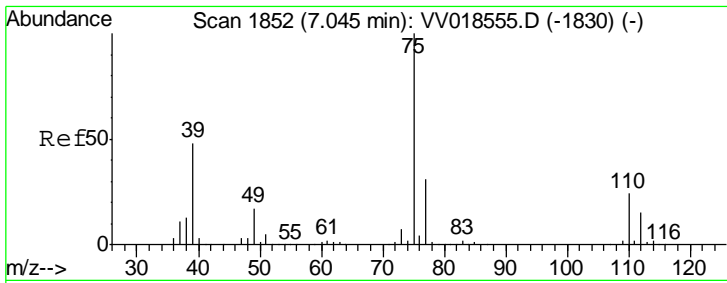
Tgt Ion	Resp	Lower	Upper
63	154954		
112	4.6	3.9	5.9



#38
 Bromodichloromethane
 Concen: 49.357 ug/L
 RT: 6.53 min Scan# 1693
 Delta R.T. 0.01 min
 Lab File: VV018579.D
 Acq: 30 Sep 2020 19:24

Tgt Ion	Resp	Lower	Upper
83	196114		
85	63.7	44.5	82.7
127	9.1	7.2	10.8

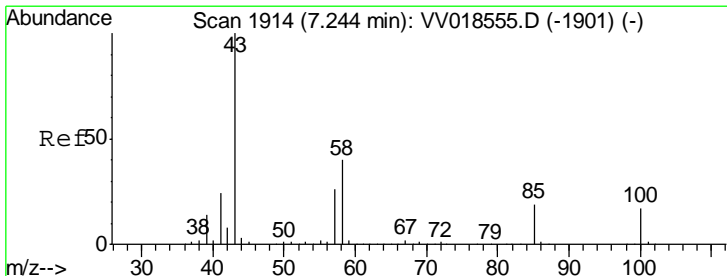
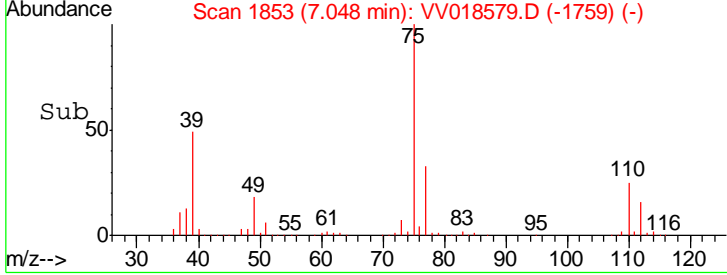
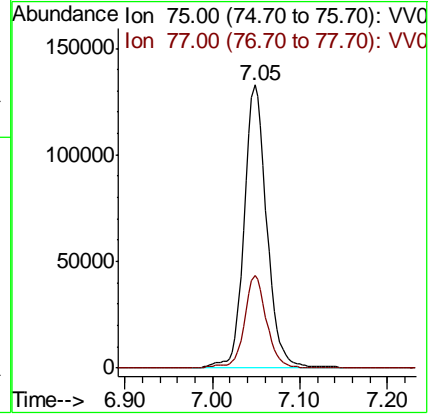
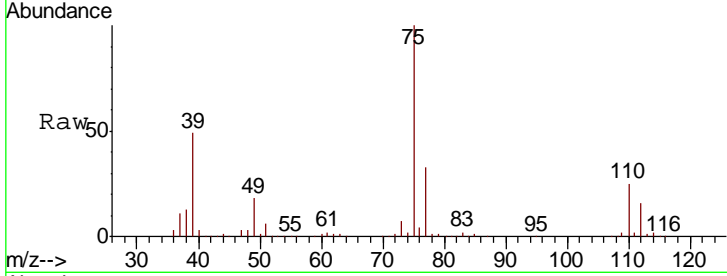




#39
 cis-1,3-Dichloropropene
 Concen: 51.356 ug/L
 RT: 7.05 min Scan# 1853
 Delta R.T. 0.00 min
 Lab File: VV018579.D
 Acq: 30 Sep 2020 19:24

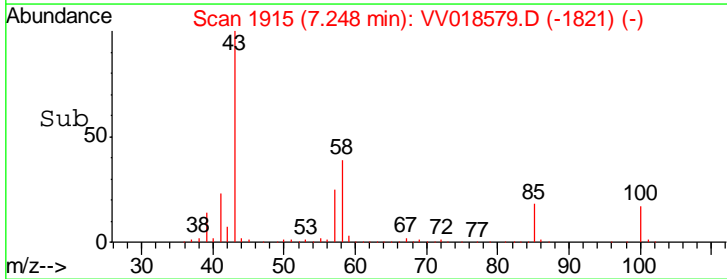
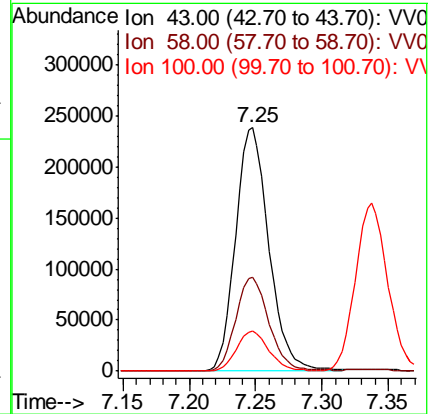
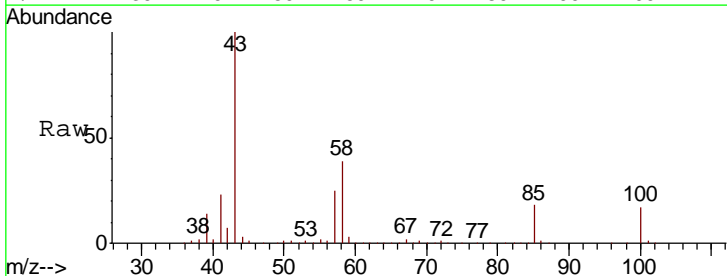
Instrument : MSVOA_V
 ClientSampled : VSTD05095

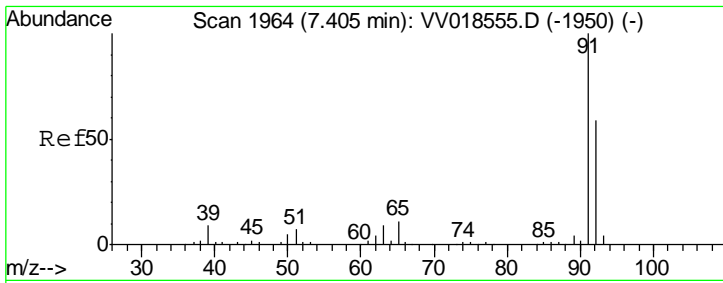
Tgt Ion	Resp	Lower	Upper
75	100		
77	32.7	23.0	42.6



#40
 4-Methyl-2-pentanone
 Concen: 108.693 ug/L
 RT: 7.25 min Scan# 1915
 Delta R.T. 0.00 min
 Lab File: VV018579.D
 Acq: 30 Sep 2020 19:24

Tgt Ion	Resp	Lower	Upper
43	100		
58	38.7	31.8	47.6
100	16.1	13.4	20.0



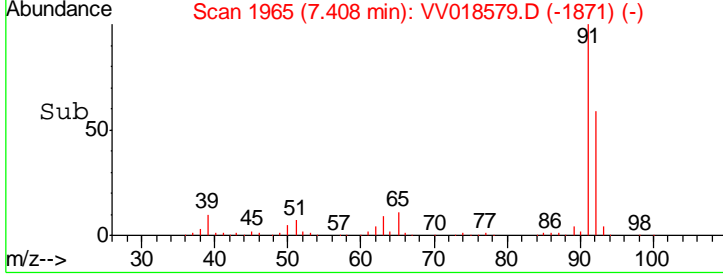
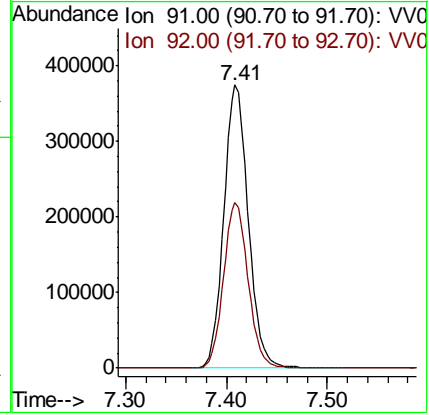
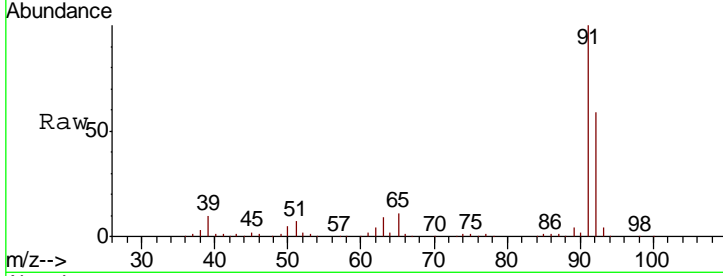


#42
 Toluene
 Concen: 50.703 ug/L
 RT: 7.41 min Scan# 1965
 Delta R.T. 0.00 min
 Lab File: VV018579.D
 Acq: 30 Sep 2020 19:24

Instrument : MSVOA_V
 ClientSampled : VSTD05095

Tgt Ion: 91 Resp: 634299

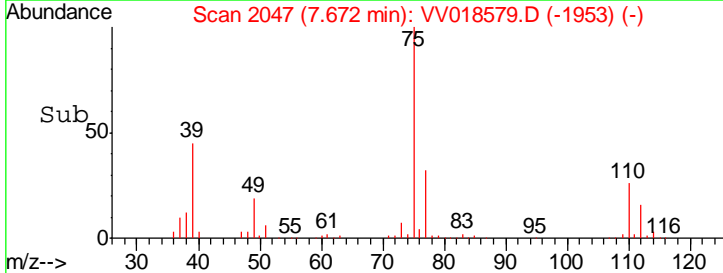
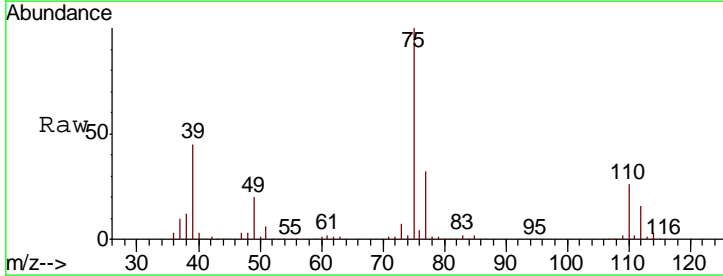
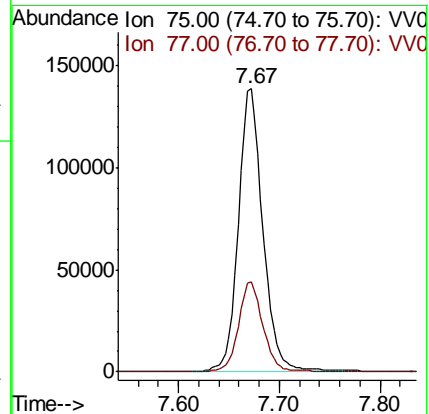
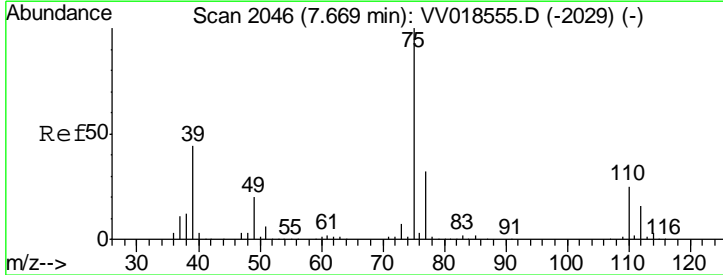
Ion	Ratio	Lower	Upper
91	100		
92	58.6	41.6	77.3

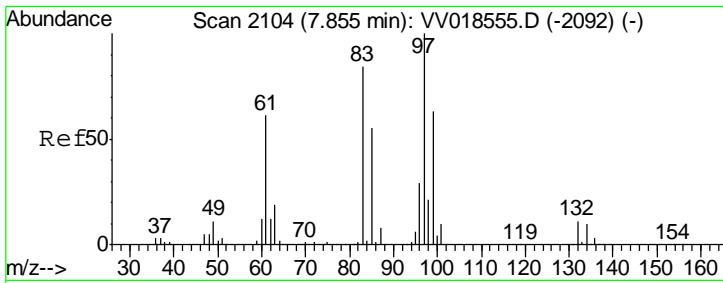


#44
 trans-1,3-Dichloropropene
 Concen: 51.511 ug/L
 RT: 7.67 min Scan# 2047
 Delta R.T. 0.00 min
 Lab File: VV018579.D
 Acq: 30 Sep 2020 19:24

Tgt Ion: 75 Resp: 235545

Ion	Ratio	Lower	Upper
75	100		
77	31.6	22.7	42.1

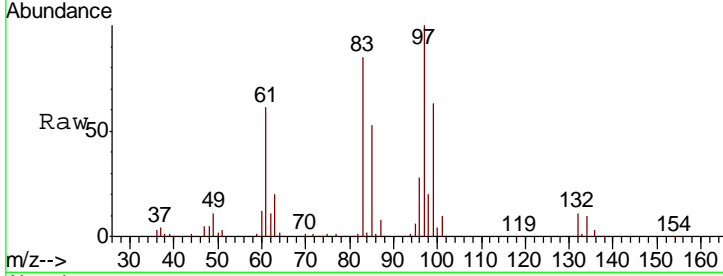




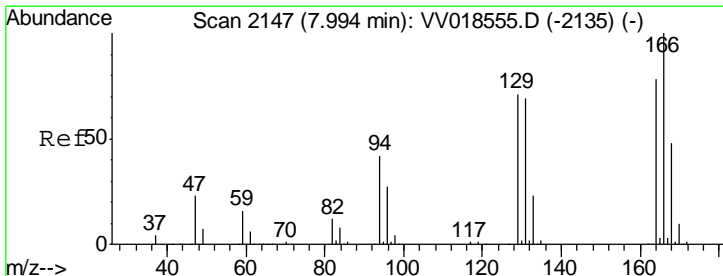
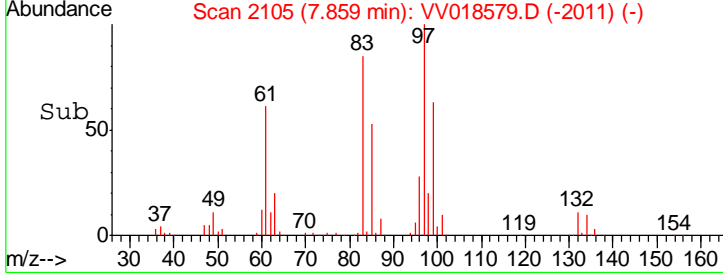
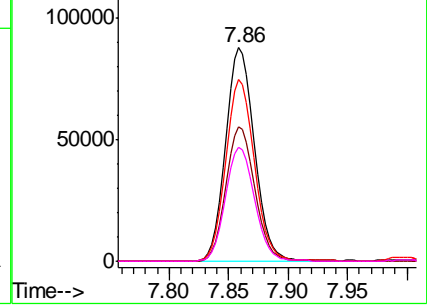
#45
 1,1,2-Trichloroethane
 Concen: 50.259 ug/L
 RT: 7.86 min Scan# 2105
 Delta R.T. 0.00 min
 Lab File: VV018579.D
 Acq: 30 Sep 2020 19:24

Instrument : MSVOA_V
 ClientSampled : VSTD05095

Tgt Ion	Resp	Lower	Upper
97	147616		
99	62.9	43.3	80.3
83	85.2	60.5	112.5
85	53.4	38.3	71.1

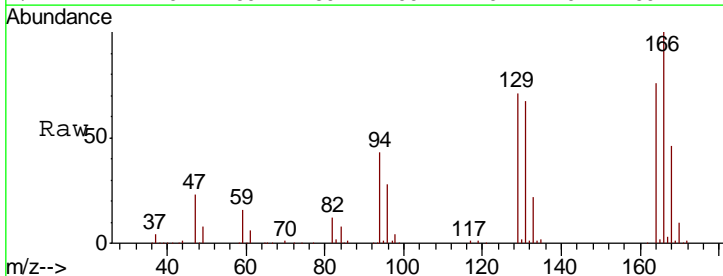


Abundance Ion 97.00 (96.70 to 97.70): VV018555.D (-2092) (-)
 Ion 99.00 (98.70 to 99.70): VV018555.D (-2092) (-)
 Ion 83.00 (82.70 to 83.70): VV018555.D (-2092) (-)
 Ion 85.00 (84.70 to 85.70): VV018555.D (-2092) (-)

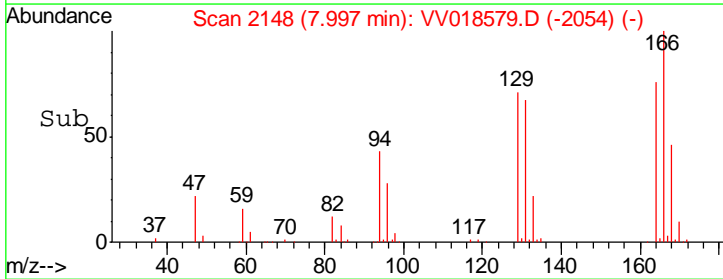
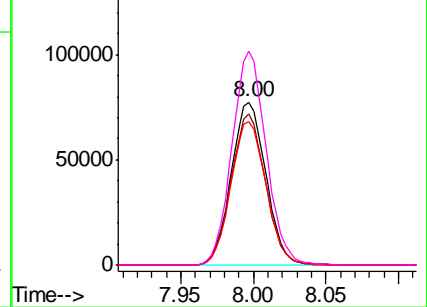


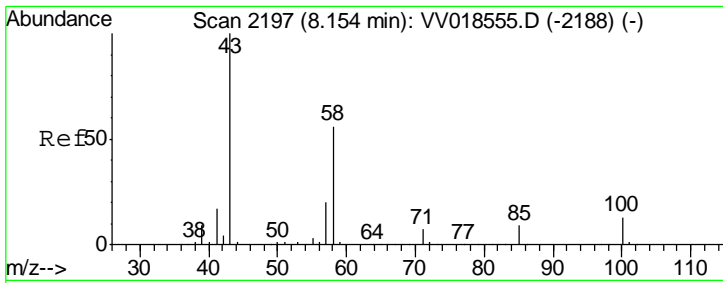
#46
 Tetrachloroethene
 Concen: 47.124 ug/L
 RT: 8.00 min Scan# 2148
 Delta R.T. 0.00 min
 Lab File: VV018579.D
 Acq: 30 Sep 2020 19:24

Tgt Ion	Resp	Lower	Upper
164	128352		
129	92.5	62.8	116.6
131	87.9	60.8	112.8
166	131.2	88.9	165.1



Abundance Ion 164.00 (163.70 to 164.70): VV018555.D (-2135) (-)
 Ion 129.00 (128.70 to 129.70): VV018555.D (-2135) (-)
 Ion 131.00 (130.70 to 131.70): VV018555.D (-2135) (-)
 Ion 166.00 (165.70 to 166.70): VV018555.D (-2135) (-)

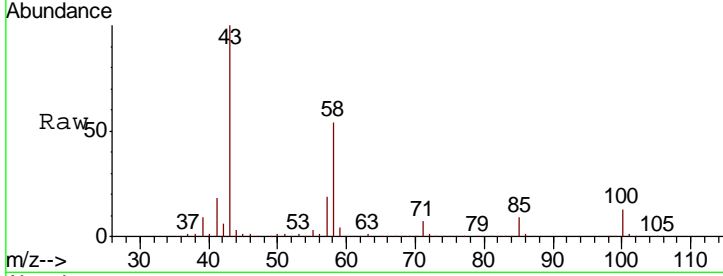




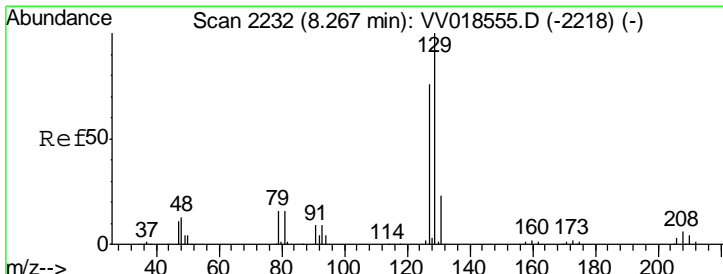
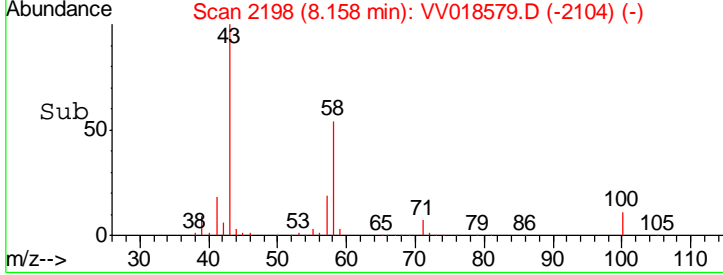
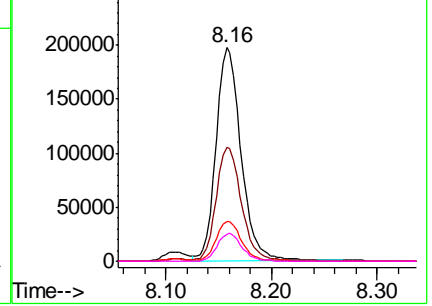
#48
 2-Hexanone
 Concen: 108.913 ug/L
 RT: 8.16 min Scan# 2198
 Delta R.T. 0.00 min
 Lab File: VV018579.D
 Acq: 30 Sep 2020 19:24

Instrument :
 MSVOA_V
 ClientSampleID :
 VSTD05095

Tgt Ion	Resp	Lower	Upper
43	325333		
58	54.1	45.1	67.7
57	18.6	15.7	23.5
100	12.9	11.0	16.4

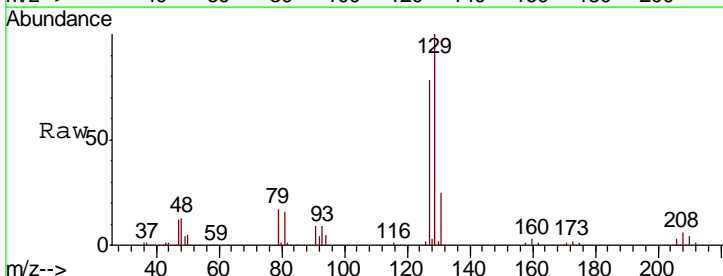


Abundance Ion 43.00 (42.70 to 43.70): VV018555.D (-2188) (-)
 Ion 58.00 (57.70 to 58.70): VV018555.D (-2188) (-)
 Ion 57.00 (56.70 to 57.70): VV018555.D (-2188) (-)
 Ion 100.00 (99.70 to 100.70): VV018555.D (-2188) (-)

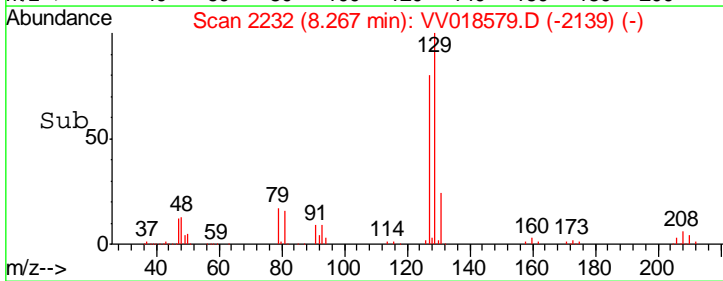
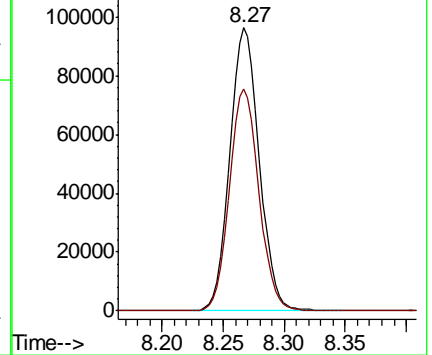


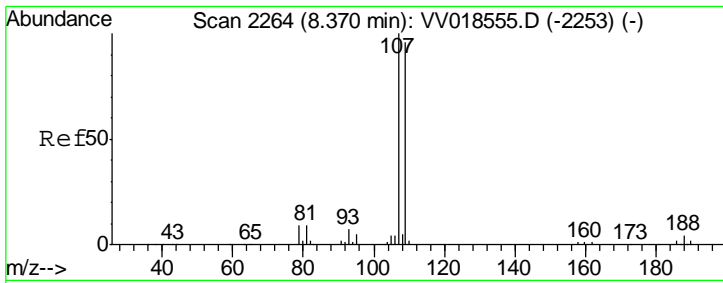
#49
 Dibromochloromethane
 Concen: 48.507 ug/L
 RT: 8.27 min Scan# 2232
 Delta R.T. 0.00 min
 Lab File: VV018579.D
 Acq: 30 Sep 2020 19:24

Tgt Ion	Resp	Lower	Upper
129	162952		
127	78.3	54.1	100.5



Abundance Ion 129.00 (128.70 to 129.70): VV018555.D (-2218) (-)
 Ion 127.00 (126.70 to 127.70): VV018555.D (-2218) (-)

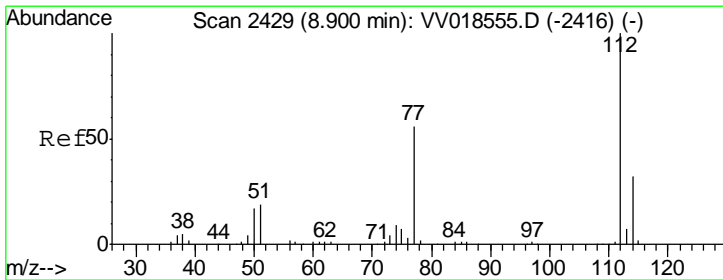
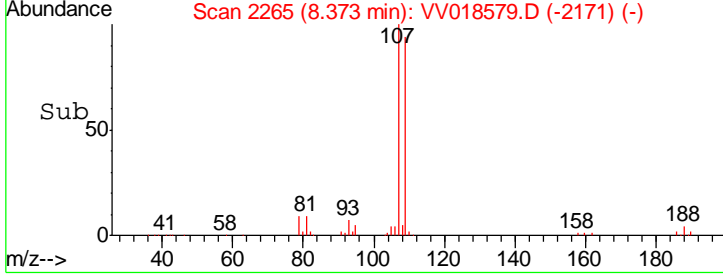
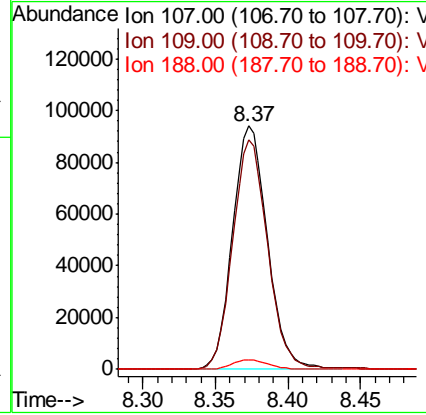
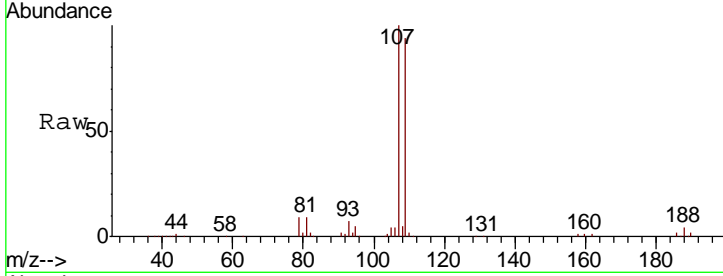




#50
 1,2-Dibromoethane
 Concen: 50.350 ug/L
 RT: 8.37 min Scan# 2265
 Delta R.T. 0.00 min
 Lab File: VV018579.D
 Acq: 30 Sep 2020 19:24

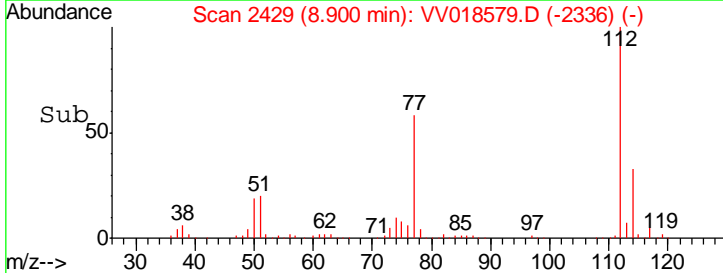
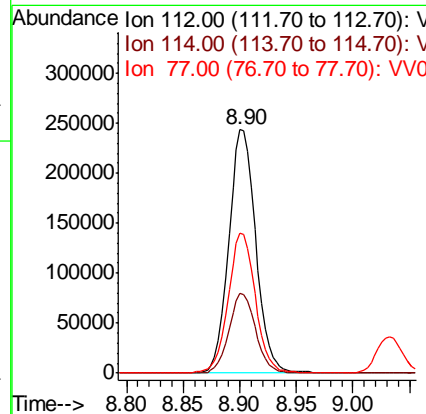
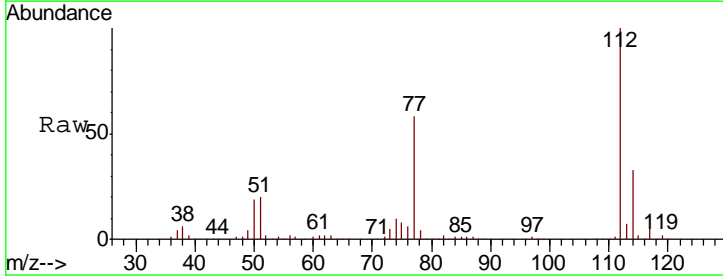
Instrument : MSVOA_V
 ClientSampled : VSTD05095

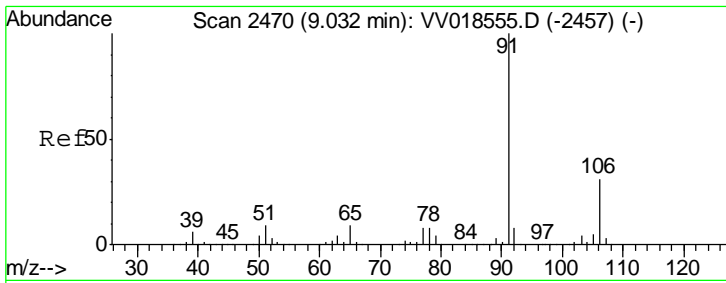
Tgt Ion	Resp	Lower	Upper
107	157234		
109	94.1	65.1	120.9
188	4.0	3.7	5.5



#51
 Chlorobenzene
 Concen: 47.939 ug/L
 RT: 8.90 min Scan# 2429
 Delta R.T. 0.00 min
 Lab File: VV018579.D
 Acq: 30 Sep 2020 19:24

Tgt Ion	Resp	Lower	Upper
112	405720		
114	32.6	22.4	41.6
77	57.6	44.8	67.2

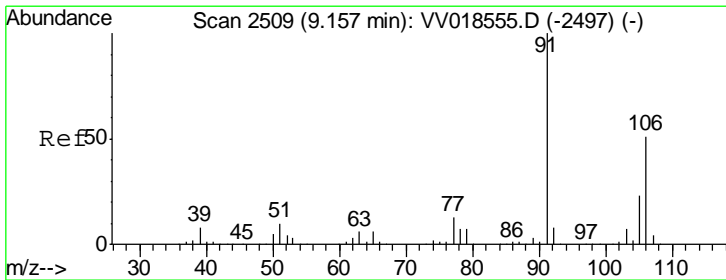
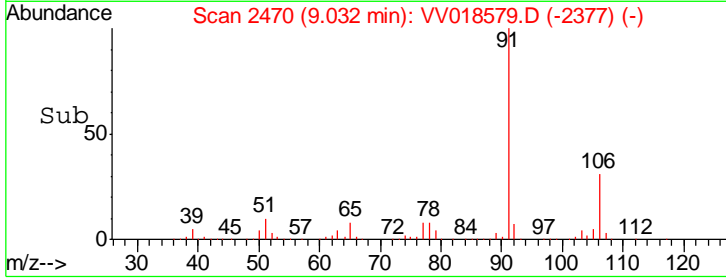
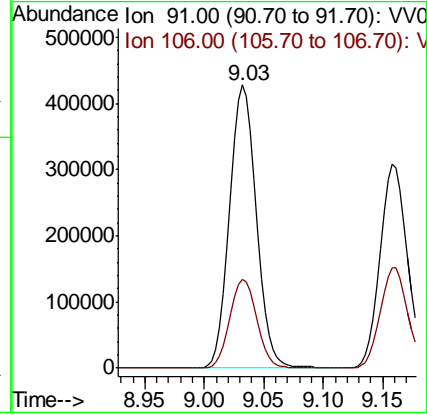
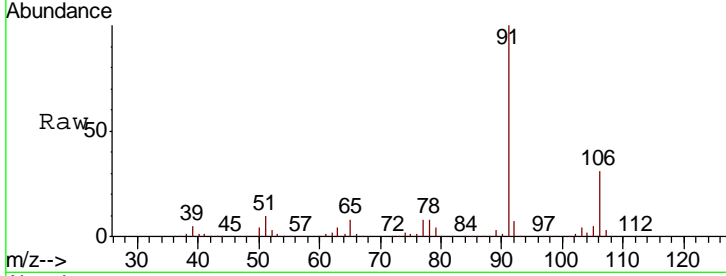




#52
Ethylbenzene
Concen: 47.961 ug/L
RT: 9.03 min Scan# 2470
Delta R.T. 0.00 min
Lab File: VV018579.D
Acq: 30 Sep 2020 19:24

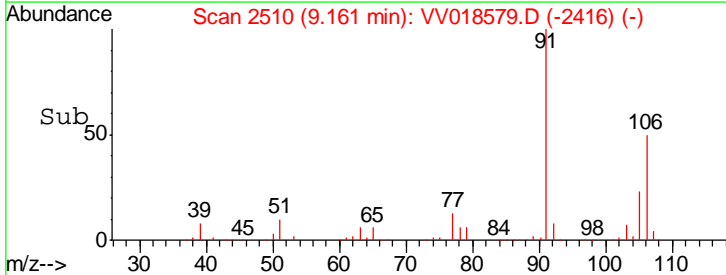
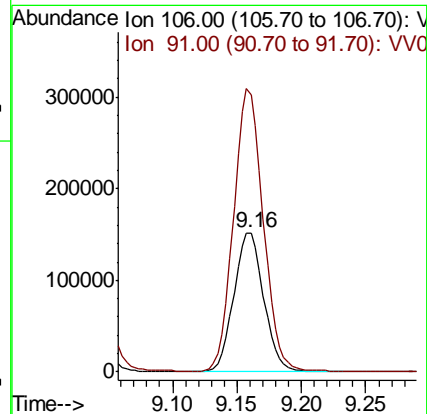
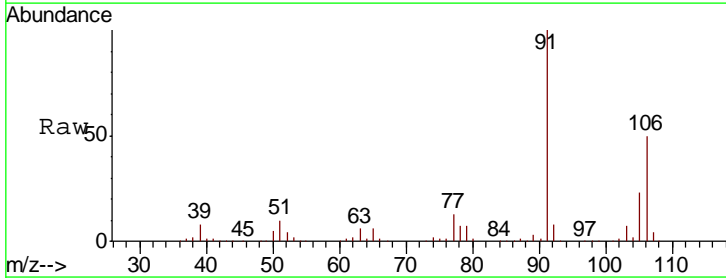
Instrument :
MSVOA_V
ClientSampled :
VSTD05095

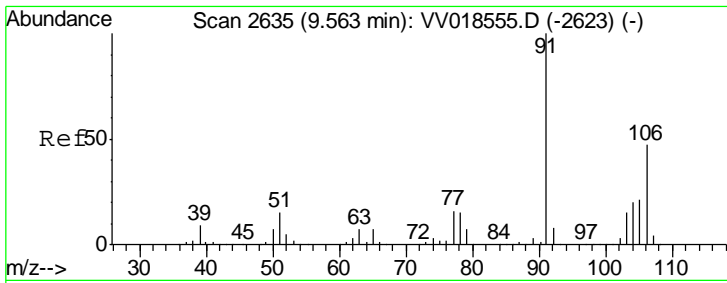
Tgt Ion: 91 Resp: 670059
Ion Ratio Lower Upper
91 100
106 31.3 21.9 40.7



#53
m,p-Xylene
Concen: 45.222 ug/L
RT: 9.16 min Scan# 2510
Delta R.T. 0.00 min
Lab File: VV018579.D
Acq: 30 Sep 2020 19:24

Tgt Ion: 106 Resp: 244164
Ion Ratio Lower Upper
106 100
91 199.5 142.3 264.3

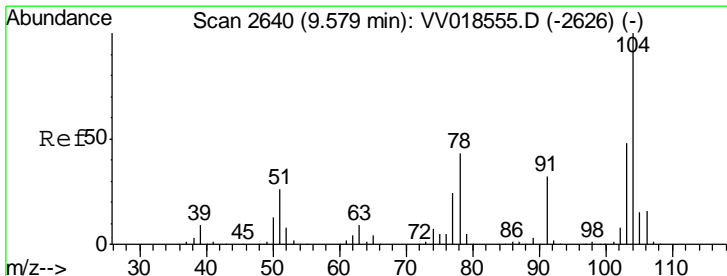
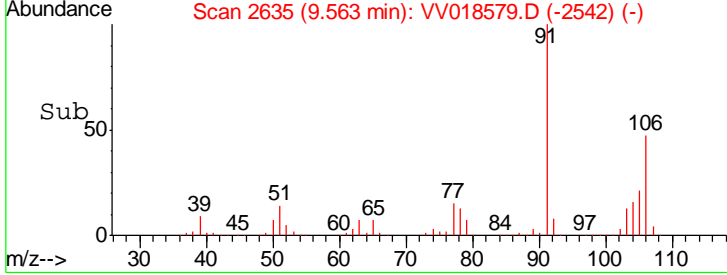
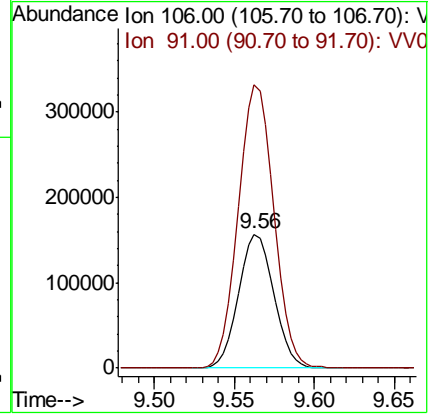
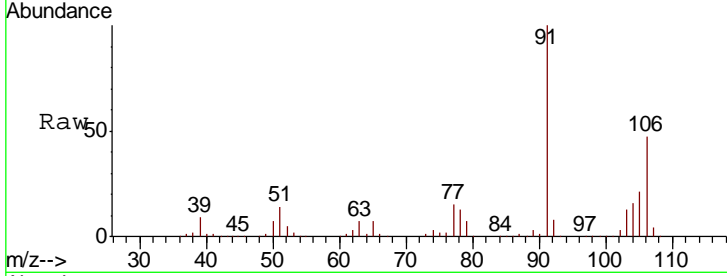




#54
 o-xylene
 Concen: 45.919 ug/L
 RT: 9.56 min Scan# 2635
 Delta R.T. 0.00 min
 Lab File: VV018579.D
 Acq: 30 Sep 2020 19:24

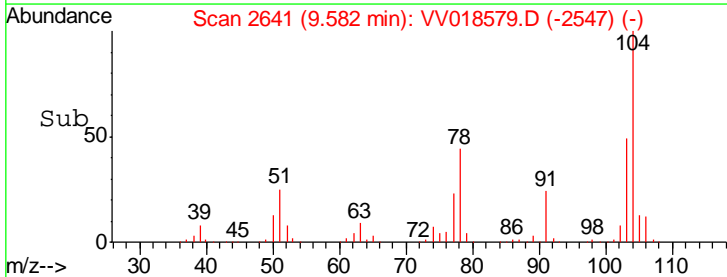
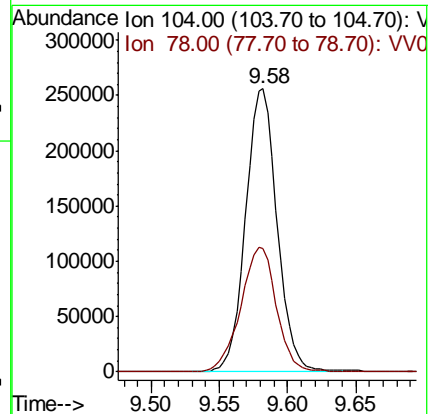
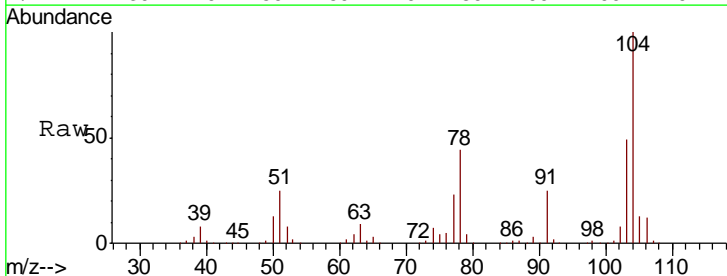
Instrument : MSVOA_V
 ClientSampled : VSTD05095

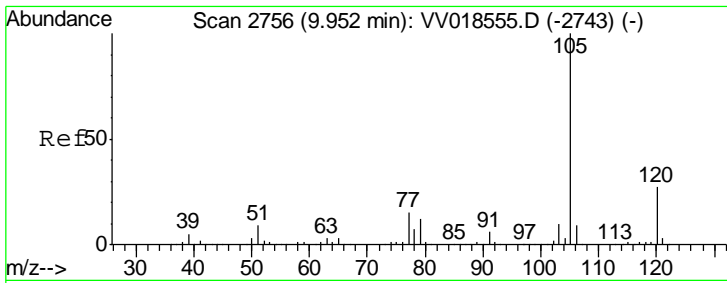
Tgt Ion:106 Resp: 234727
 Ion Ratio Lower Upper
 106 100
 91 211.5 151.0 280.4



#55
 Styrene
 Concen: 46.078 ug/L
 RT: 9.58 min Scan# 2641
 Delta R.T. 0.00 min
 Lab File: VV018579.D
 Acq: 30 Sep 2020 19:24

Tgt Ion:104 Resp: 410125
 Ion Ratio Lower Upper
 104 100
 78 43.7 30.2 56.2

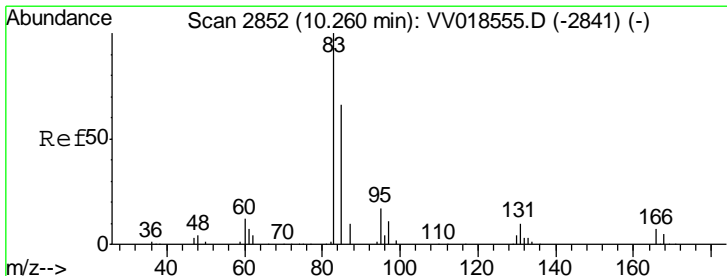
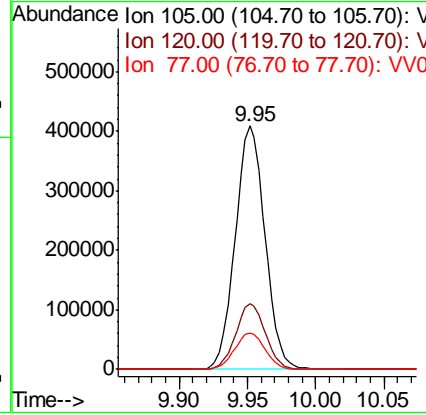
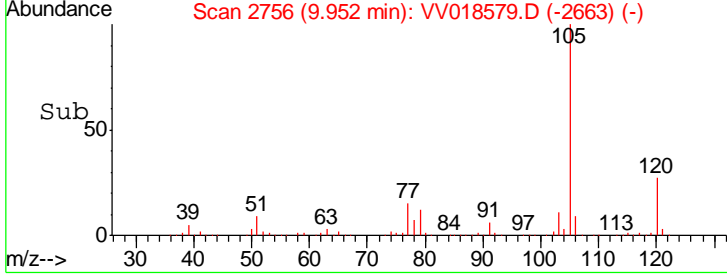
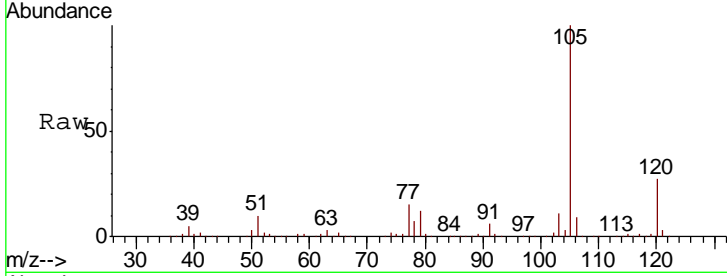




#56
 Isopropylbenzene
 Concen: 45.078 ug/L
 RT: 9.95 min Scan# 2756
 Delta R.T. 0.00 min
 Lab File: VV018579.D
 Acq: 30 Sep 2020 19:24

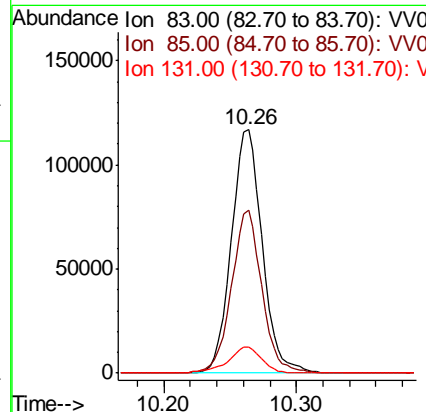
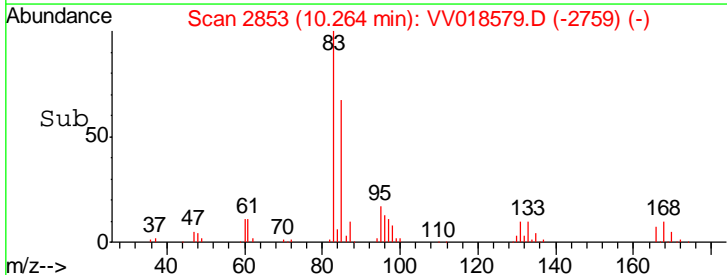
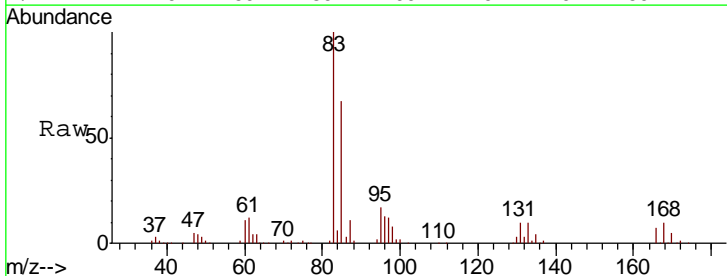
Instrument :
 MSVOA_V
 ClientSampled :
 VSTD05095

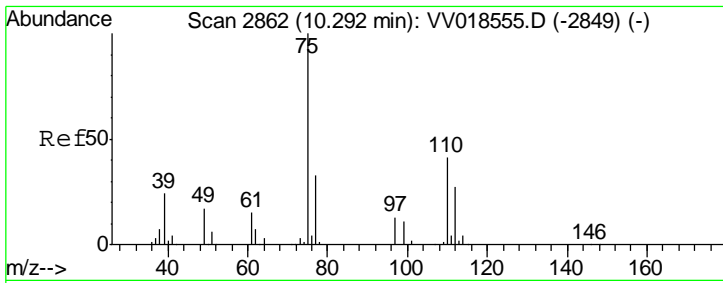
Tgt Ion	Resp	Lower	Upper
105	617988		
120	26.9	21.5	32.3
77	15.3	12.2	18.2



#58
 1,1,2,2-Tetrachloroethane
 Concen: 45.689 ug/L
 RT: 10.26 min Scan# 2853
 Delta R.T. 0.00 min
 Lab File: VV018579.D
 Acq: 30 Sep 2020 19:24

Tgt Ion	Resp	Lower	Upper
83	189151		
85	66.8	44.5	82.7
131	10.5	8.6	12.8

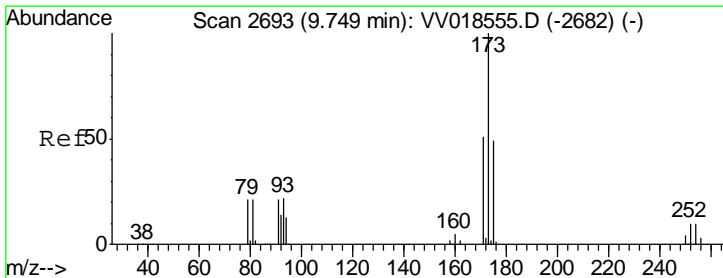
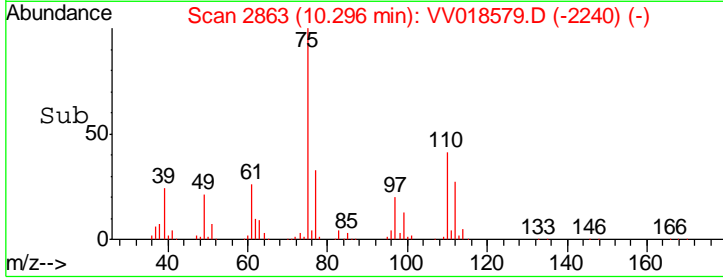
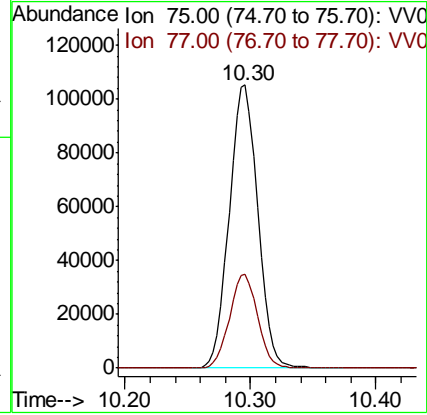
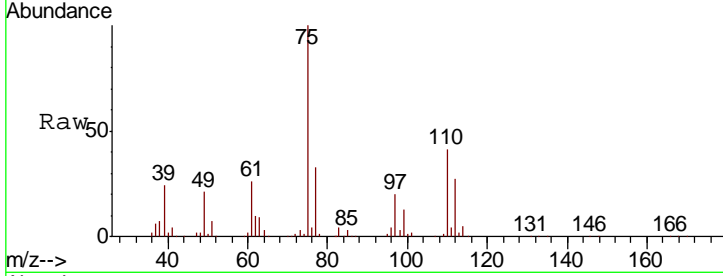




#59
 1,2,3-Trichloropropane
 Concen: 46.104 ug/L
 RT: 10.30 min Scan# 2863
 Delta R.T. 0.00 min
 Lab File: VV018579.D
 Acq: 30 Sep 2020 19:24

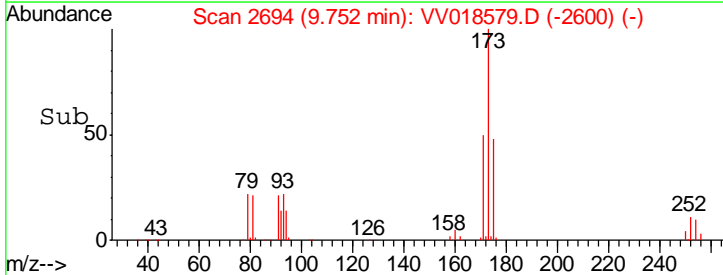
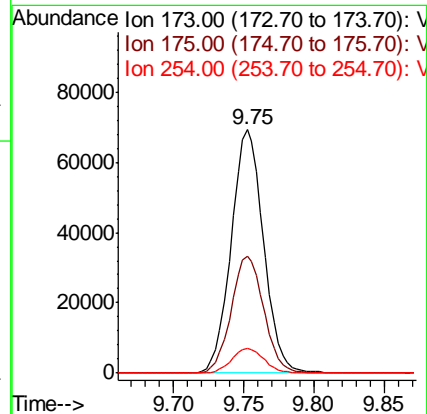
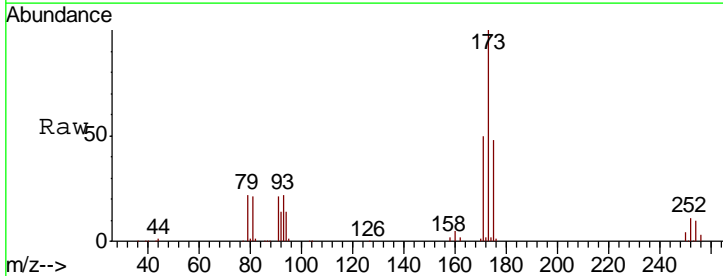
Instrument :
 MSVOA_V
 ClientSampleID :
 VSTD05095

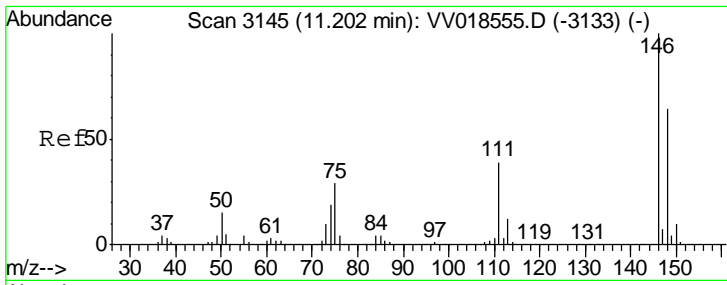
Tgt Ion: 75 Resp: 166382
 Ion Ratio Lower Upper
 75 100
 77 32.7 25.4 38.0



#61
 Bromoform
 Concen: 47.157 ug/L
 RT: 9.75 min Scan# 2694
 Delta R.T. 0.00 min
 Lab File: VV018579.D
 Acq: 30 Sep 2020 19:24

Tgt Ion: 173 Resp: 111215
 Ion Ratio Lower Upper
 173 100
 175 48.4 39.8 59.8
 254 10.2 8.5 12.7

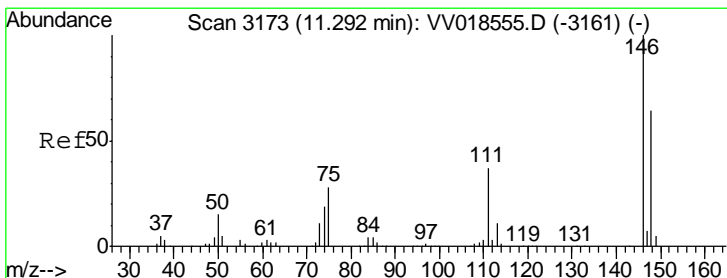
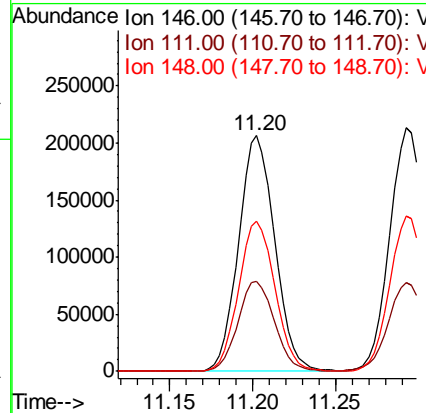
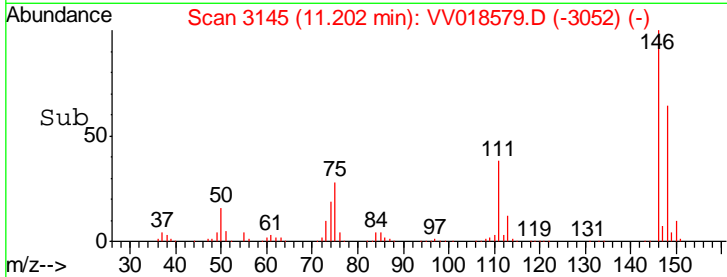
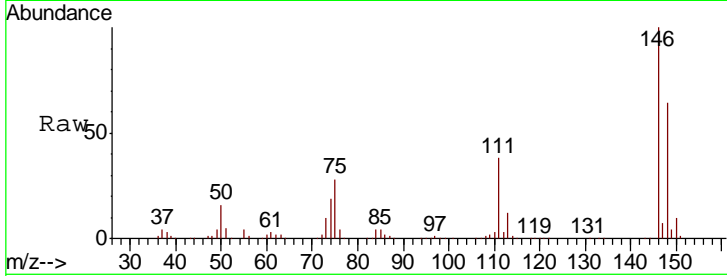




#62
 1,3-Dichlorobenzene
 Concen: 47.338 ug/L
 RT: 11.20 min Scan# 3145
 Delta R.T. 0.00 min
 Lab File: VV018579.D
 Acq: 30 Sep 2020 19:24

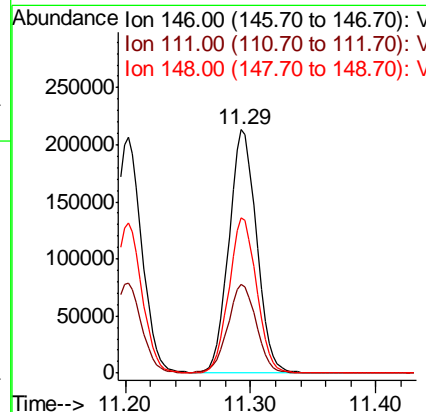
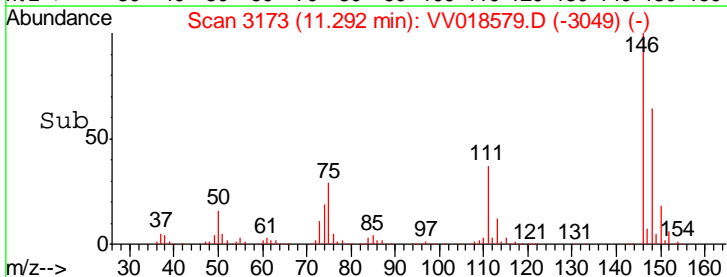
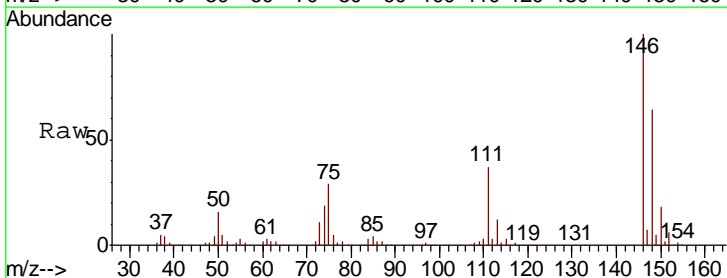
Instrument : MSVOA_V
 ClientSampled : VSTD05095

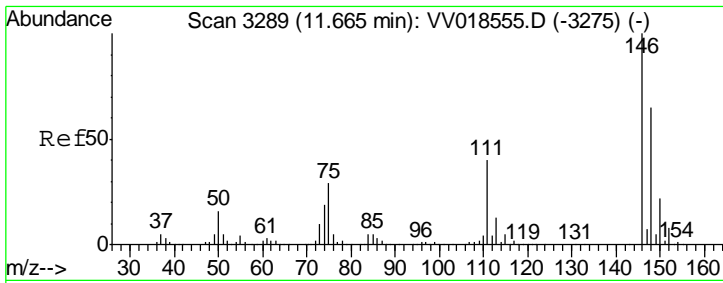
Tgt Ion	Resp	Lower	Upper
146	100		
111	38.2	26.8	49.8
148	63.6	44.0	81.8



#63
 1,4-Dichlorobenzene
 Concen: 47.675 ug/L
 RT: 11.29 min Scan# 3173
 Delta R.T. 0.00 min
 Lab File: VV018579.D
 Acq: 30 Sep 2020 19:24

Tgt Ion	Resp	Lower	Upper
146	100		
111	36.6	26.2	48.6
148	64.0	44.4	82.5

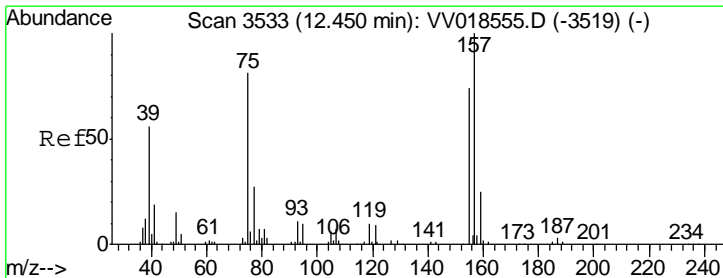
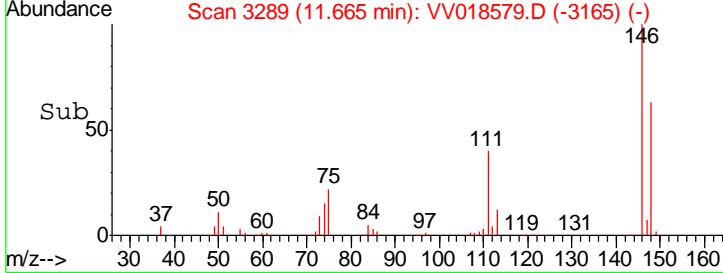
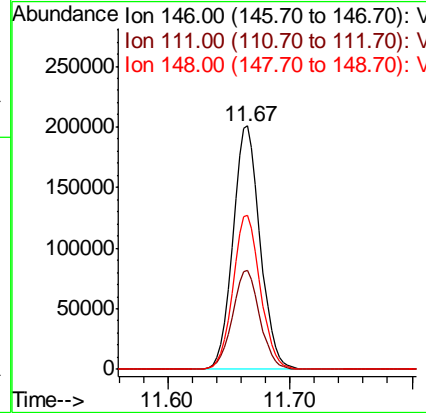
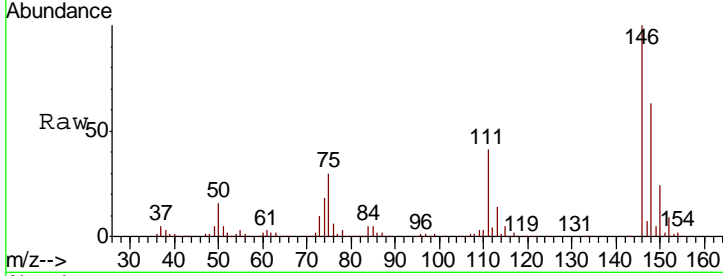




#65
 1,2-Dichlorobenzene
 Concen: 47.443 ug/L
 RT: 11.67 min Scan# 3289
 Delta R.T. 0.00 min
 Lab File: VV018579.D
 Acq: 30 Sep 2020 19:24

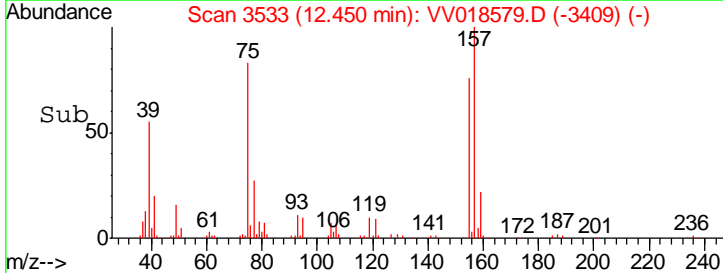
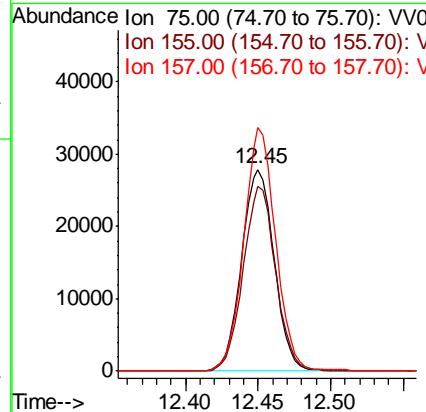
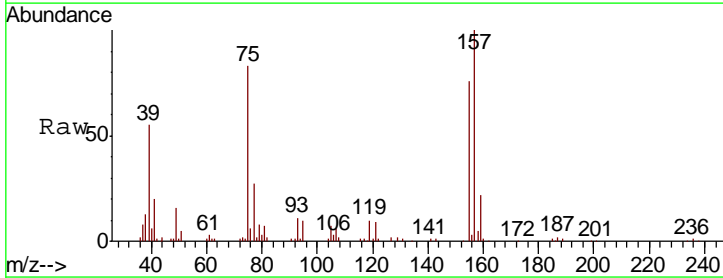
Instrument :
 MSVOA_V
 ClientSampled :
 VSTD05095

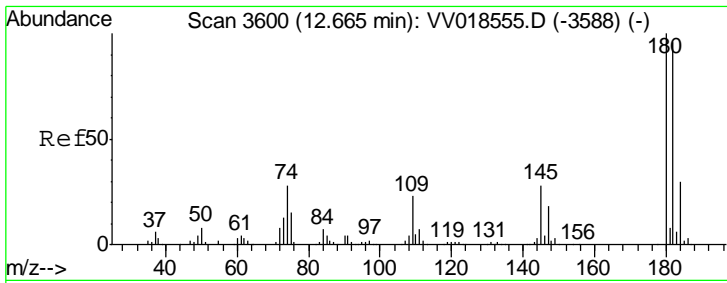
Tgt Ion	Resp	Lower	Upper
146	311866		
111	40.7	32.8	49.2
148	63.3	51.9	77.9



#66
 1,2-Dibromo-3-chloropropane
 Concen: 48.647 ug/L
 RT: 12.45 min Scan# 3533
 Delta R.T. 0.00 min
 Lab File: VV018579.D
 Acq: 30 Sep 2020 19:24

Tgt Ion	Resp	Lower	Upper
75	43654		
155	91.6	73.0	109.6
157	120.9	95.8	143.6

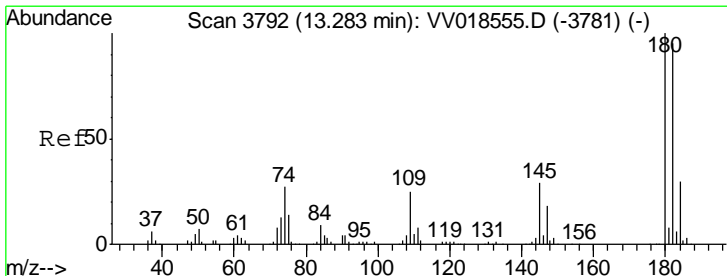
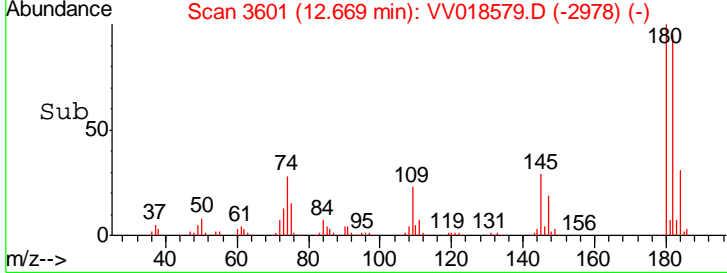
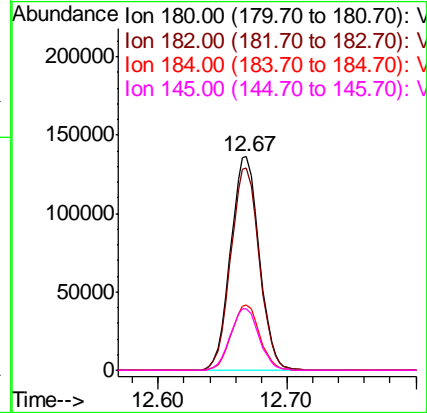
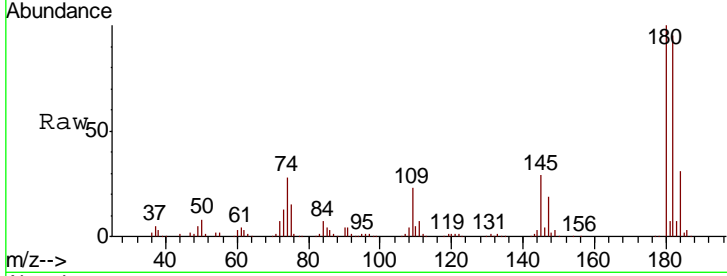




#67
 1,3,5-Trichlorobenzene
 Concen: 45.494 ug/L
 RT: 12.67 min Scan# 3601
 Delta R.T. 0.00 min
 Lab File: VV018579.D
 Acq: 30 Sep 2020 19:24

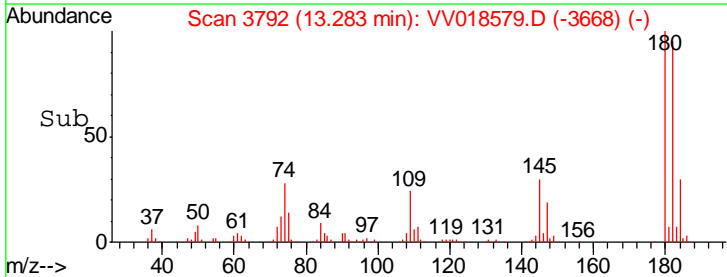
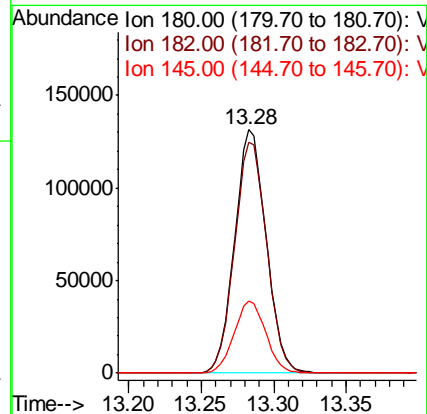
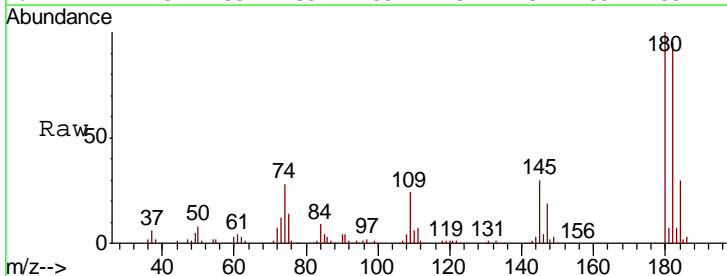
Instrument :
 MSVOA_V
 ClientSampleId :
 VSTD05095

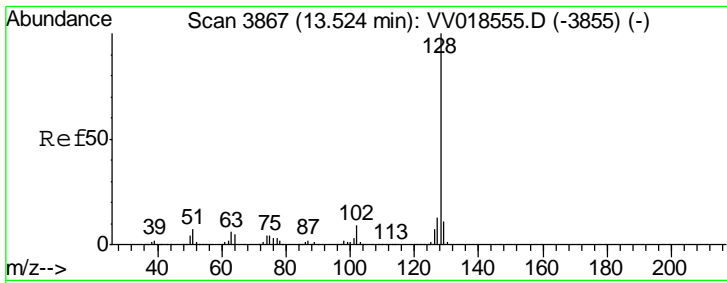
Tgt Ion	Resp	Lower	Upper
180	100		
182	94.8	77.1	115.7
184	30.3	24.3	36.5
145	28.9	22.9	34.3



#68
 1,2,4-trichlorobenzene
 Concen: 46.334 ug/L
 RT: 13.28 min Scan# 3792
 Delta R.T. 0.00 min
 Lab File: VV018579.D
 Acq: 30 Sep 2020 19:24

Tgt Ion	Resp	Lower	Upper
180	100		
182	96.2	76.3	114.5
145	29.6	23.6	35.4

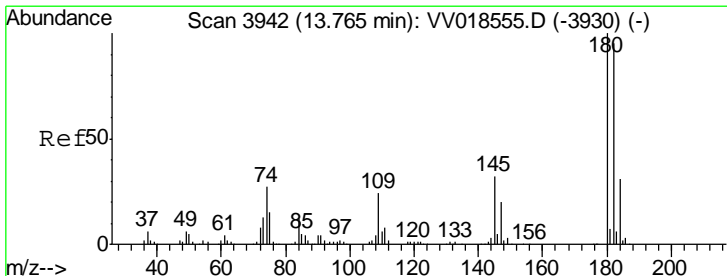
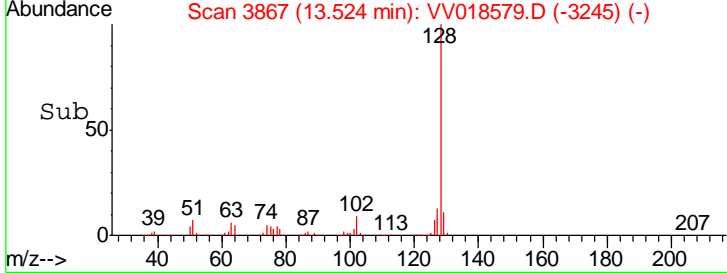
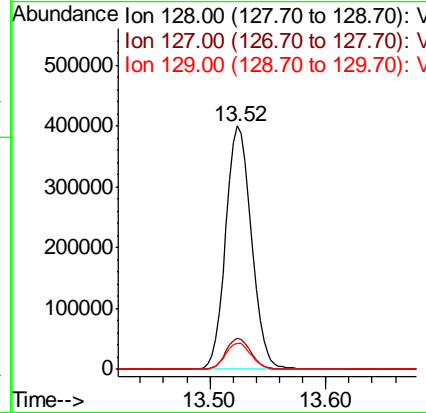
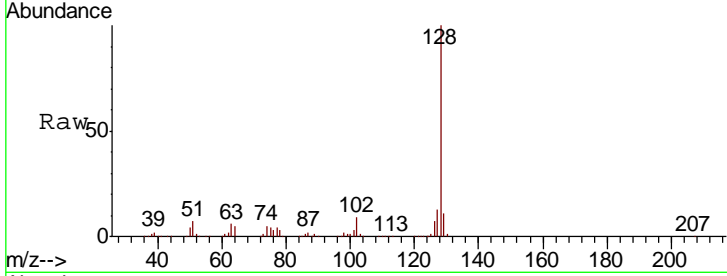




#69
 Naphthalene
 Concen: 50.050 ug/L
 RT: 13.52 min Scan# 3867
 Delta R.T. 0.00 min
 Lab File: VV018579.D
 Acq: 30 Sep 2020 19:24

Instrument : MSVOA_V
 ClientSampled : VSTD05095

Tgt Ion	Resp	Lower	Upper
128	613624		
127	12.7	10.3	15.5
129	11.0	8.6	12.8



#70
 1,2,3-Trichlorobenzene
 Concen: 46.505 ug/L
 RT: 13.77 min Scan# 3943
 Delta R.T. 0.00 min
 Lab File: VV018579.D
 Acq: 30 Sep 2020 19:24

Tgt Ion	Resp	Lower	Upper
180	199952		
182	96.2	77.1	115.7
145	31.8	25.1	37.7

