

Data Path : Z:\voasrv\HPCHEM1\MSVOA\_V\Data\VW093021\  
 Data File : VW022429.D  
 Acq On : 30 Sep 2021 14:06  
 Operator : SY/MD  
 Sample : M3978-08  
 Misc : 5.0mL/MSVOA\_V/WATER  
 ALS Vial : 12 Sample Multiplier: 1

Instrument :  
 MSVOA\_V  
 ClientSampled :  
 F4A33

Quant Time: Oct 01 02:41:36 2021  
 Quant Method : Z:\voasrv\HPCHEM1\MSVOA\_V\Method\SFAMVLM092721WMA.M  
 Quant Title : VOC Analysis  
 QLast Update : Fri Oct 01 02:38:11 2021  
 Response via : Initial Calibration

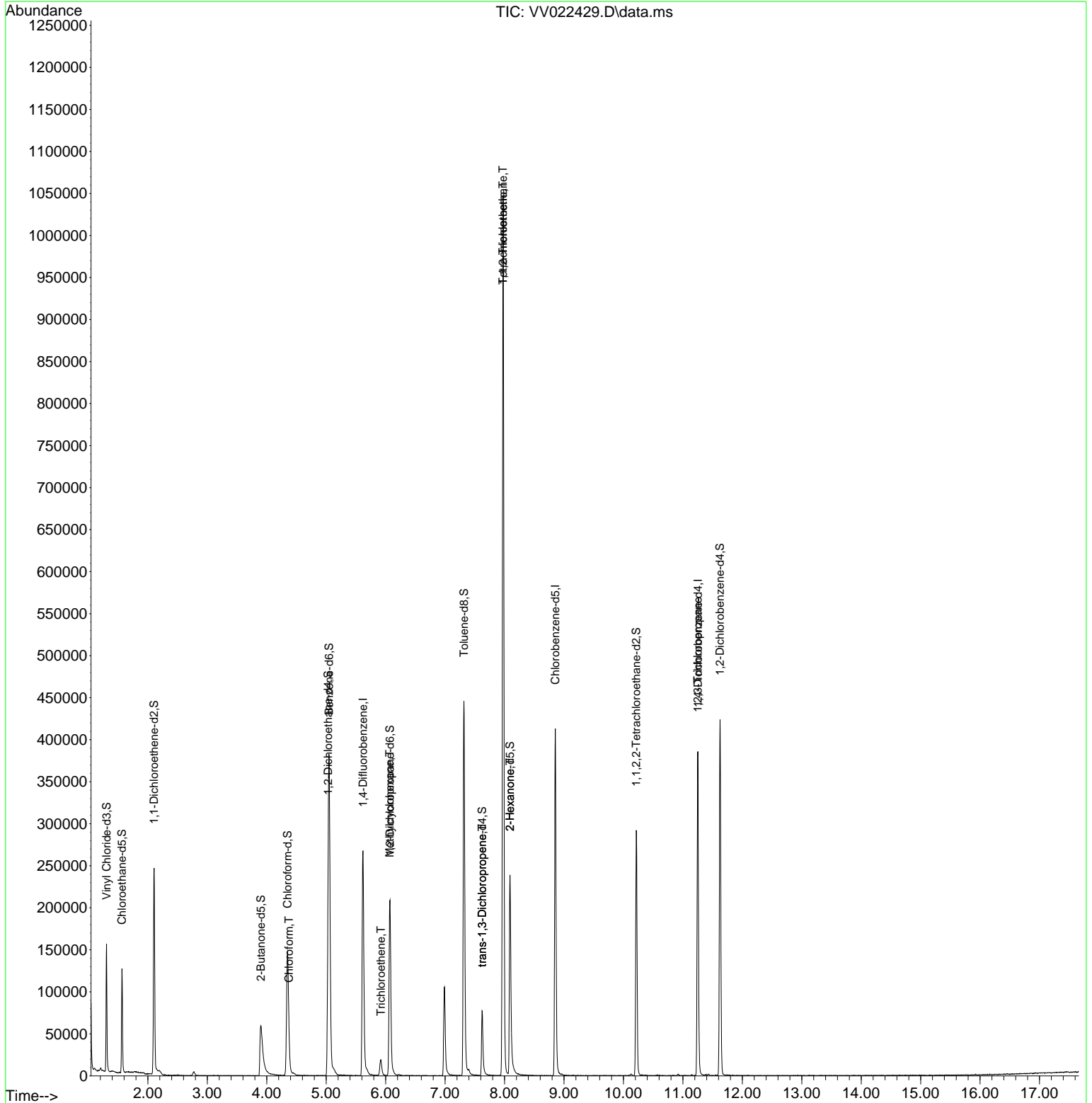
Compound	R.T.	QIon	Response	Conc	Units	Dev(Min)
Internal Standards						
1) 1,4-Difluorobenzene	5.619	114	243834	50.000	ug/L	0.00
28) Chlorobenzene-d5	8.854	117	236628	50.000	ug/L	0.00
58) 1,4-Dichlorobenzene-d4	11.252	152	103881	50.000	ug/L	0.00
System Monitoring Compounds						
4) Vinyl Chloride-d3	1.304	65	95209	46.010	ug/L	0.00
Spiked Amount	50.000	Range 60 - 135	Recovery =	92.020%		
7) Chloroethane-d5	1.564	69	74475	45.503	ug/L	0.00
Spiked Amount	50.000	Range 70 - 130	Recovery =	91.000%		
11) 1,1-Dichloroethene-d2	2.105	63	125958	35.010	ug/L	0.00
Spiked Amount	50.000	Range 60 - 125	Recovery =	70.020%		
21) 2-Butanone-d5	3.902	46	132690	90.859	ug/L	0.03
Spiked Amount	100.000	Range 40 - 130	Recovery =	90.860%		
24) Chloroform-d	4.349	84	155604	41.644	ug/L	0.00
Spiked Amount	50.000	Range 70 - 125	Recovery =	83.280%		
26) 1,2-Dichloroethane-d4	5.034	65	99337	43.352	ug/L	0.00
Spiked Amount	50.000	Range 70 - 125	Recovery =	86.700%		
32) Benzene-d6	5.050	84	340914	45.797	ug/L	0.00
Spiked Amount	50.000	Range 70 - 125	Recovery =	91.600%		
36) 1,2-Dichloropropane-d6	6.072	67	108014	45.355	ug/L	0.00
Spiked Amount	50.000	Range 70 - 120	Recovery =	90.720%		
41) Toluene-d8	7.317	98	301318	44.223	ug/L	0.00
Spiked Amount	50.000	Range 80 - 120	Recovery =	88.440%		
43) trans-1,3-Dichloroprop...	7.622	79	44263	40.702	ug/L	0.00
Spiked Amount	50.000	Range 60 - 125	Recovery =	81.400%		
47) 2-Hexanone-d5	8.091	63	87509	90.431	ug/L	0.00
Spiked Amount	100.000	Range 45 - 130	Recovery =	90.430%		
56) 1,1,2,2-Tetrachloroeth...	10.217	84	141605	40.962	ug/L	0.00
Spiked Amount	50.000	Range 65 - 120	Recovery =	81.920%		
66) 1,2-Dichlorobenzene-d4	11.625	152	113575	49.168	ug/L	0.00
Spiked Amount	50.000	Range 80 - 120	Recovery =	98.340%		
Target Compounds						
25) Chloroform	4.375	83	8005	2.328	ug/L	96
34) Trichloroethene	5.921	95	5219	2.810	ug/L	93
35) Methylcyclohexane	6.069	83	25155	8.793	ug/L #	20
44) trans-1,3-Dichloropropene	7.622	75	1916	0.736	ug/L	99
45) 1,1,2-Trichloroethane	7.976	97	1865	0.989	ug/L #	1
46) Tetrachloroethene	7.976	164	241287	157.799	ug/L	97
48) 2-Hexanone	8.091	43	9911	5.004	ug/L #	68
61) 1,2,3-Trichloropropane	11.249	75	11221	5.790	ug/L #	64

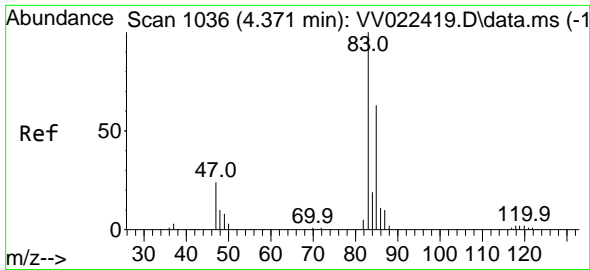
(#) = qualifier out of range (m) = manual integration (+) = signals summed

Data Path : Z:\voasrv\HPCHEM1\MSVOA\_V\Data\VV093021\  
 Data File : VV022429.D  
 Acq On : 30 Sep 2021 14:06  
 Operator : SY/MD  
 Sample : M3978-08  
 Misc : 5.0mL/MSVOA\_V/WATER  
 ALS Vial : 12 Sample Multiplier: 1

Instrument :  
 MSVOA\_V  
 ClientSampled :  
 F4A33

Quant Time: Oct 01 02:41:36 2021  
 Quant Method : Z:\voasrv\HPCHEM1\MSVOA\_V\Method\SFAMVLM092721WMA.M  
 Quant Title : VOC Analysis  
 QLast Update : Fri Oct 01 02:38:11 2021  
 Response via : Initial Calibration

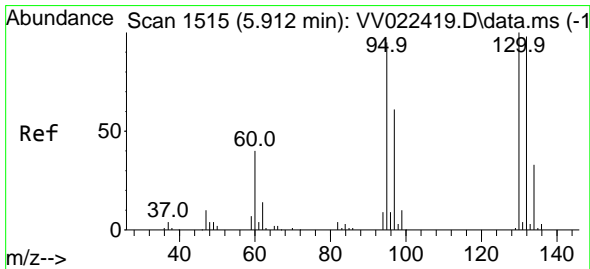
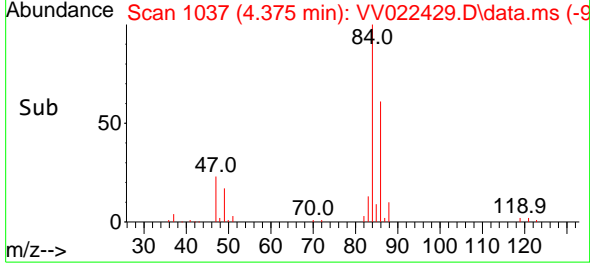
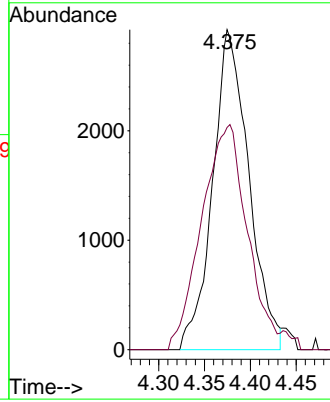
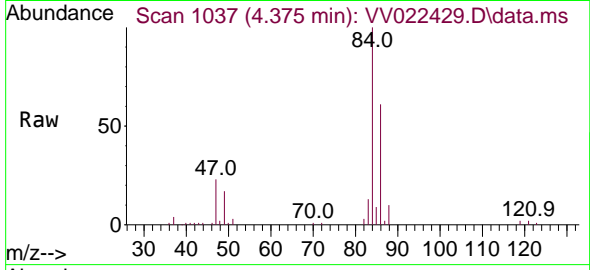




#25  
 Chloroform  
 Concen: 2.328 ug/L  
 RT: 4.375 min Scan# 1037  
 Delta R.T. 0.003 min  
 Lab File: VV022429.D  
 Acq: 30 Sep 2021 14:06

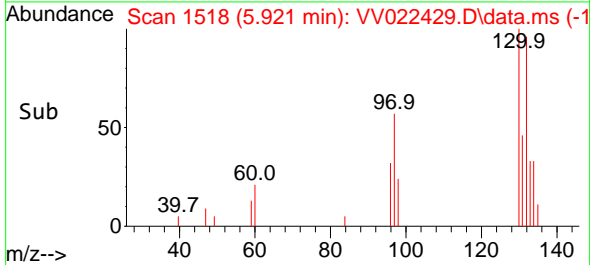
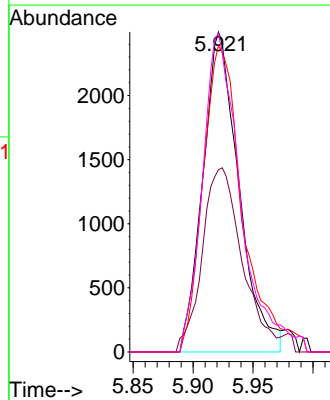
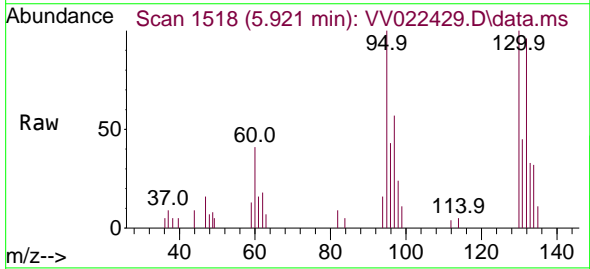
Instrument :  
 MSVOA\_V  
 ClientSampled :  
 F4A33

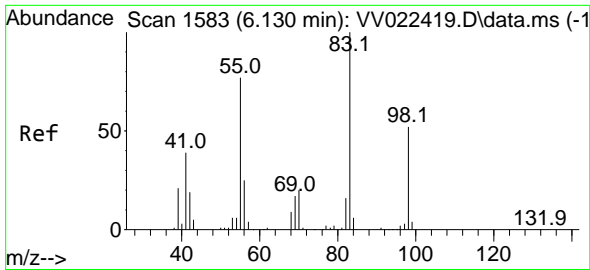
Tgt Ion: 83 Resp: 8005  
 Ion Ratio Lower Upper  
 83 100  
 85 69.4 46.5 86.3



#34  
 Trichloroethene  
 Concen: 2.810 ug/L  
 RT: 5.921 min Scan# 1518  
 Delta R.T. 0.010 min  
 Lab File: VV022429.D  
 Acq: 30 Sep 2021 14:06

Tgt Ion: 95 Resp: 5219  
 Ion Ratio Lower Upper  
 95 100  
 97 56.9 45.2 84.0  
 132 95.7 71.0 131.8  
 130 99.6 73.7 136.9

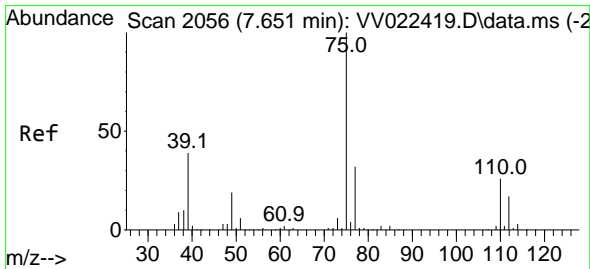
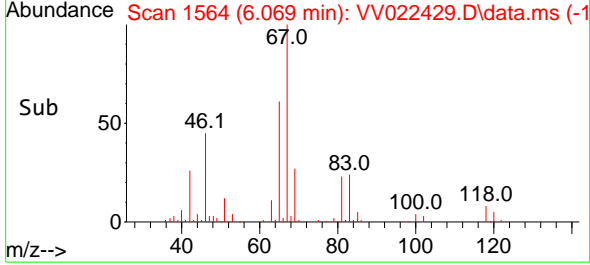
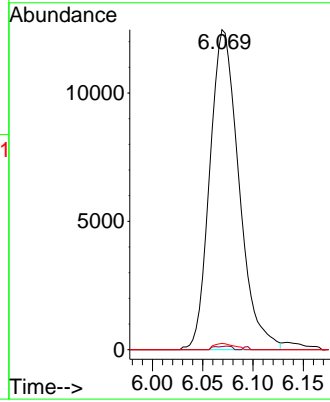
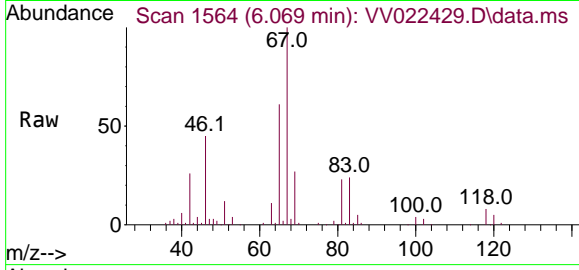




#35  
 Methylcyclohexane  
 Concen: 8.793 ug/L  
 RT: 6.069 min Scan# 1564  
 Delta R.T. -0.061 min  
 Lab File: VV022429.D  
 Acq: 30 Sep 2021 14:06

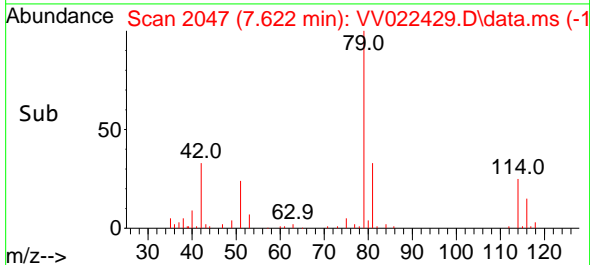
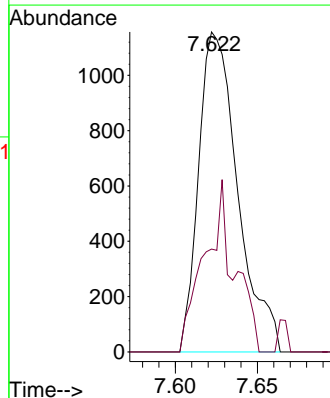
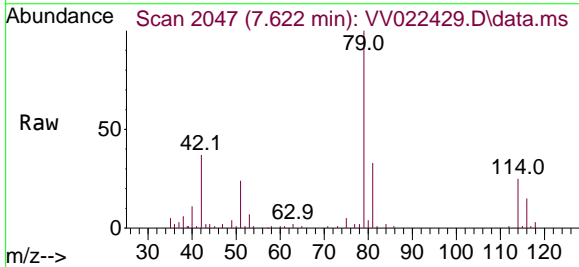
Instrument :  
 MSVOA\_V  
 ClientSampled :  
 F4A33

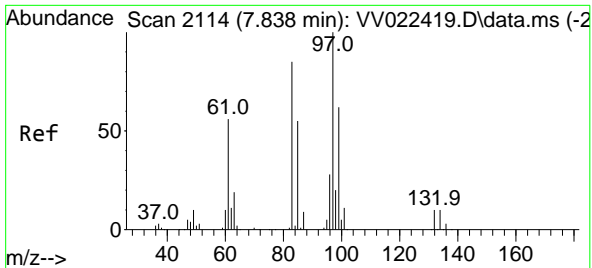
Tgt Ion	Resp	Lower	Upper
83	25155		
55	0.4	58.6	87.8#
98	1.3	39.2	58.8#



#44  
 trans-1,3-Dichloropropene  
 Concen: 0.736 ug/L  
 RT: 7.622 min Scan# 2047  
 Delta R.T. -0.029 min  
 Lab File: VV022429.D  
 Acq: 30 Sep 2021 14:06

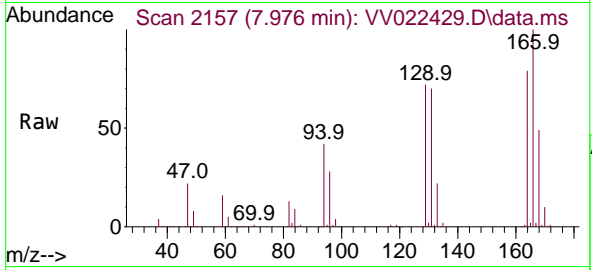
Tgt Ion	Resp	Lower	Upper
75	1916		
77	32.2	22.3	41.3





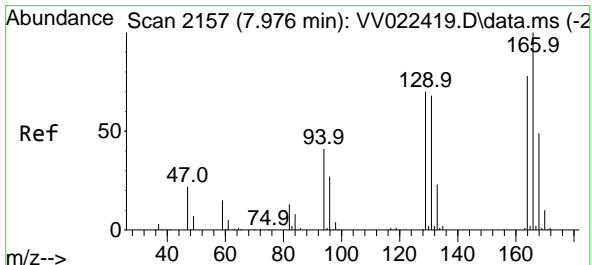
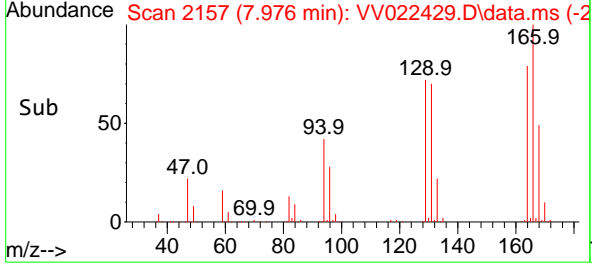
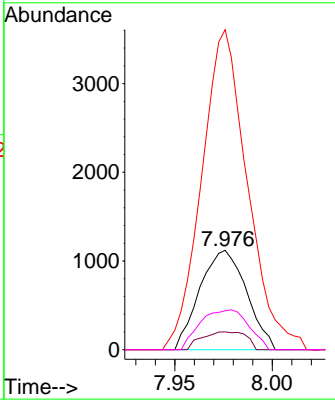
#45  
 1,1,2-Trichloroethane  
 Concen: 0.989 ug/L  
 RT: 7.976 min Scan# 2157  
 Delta R.T. 0.138 min  
 Lab File: VV022429.D  
 Acq: 30 Sep 2021 14:06

Instrument : MSVOA\_V  
 ClientSampled : F4A33



Tgt Ion: 97 Resp: 1865

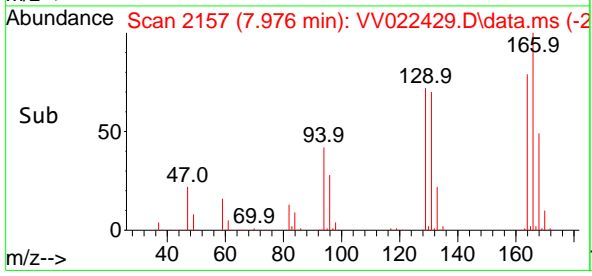
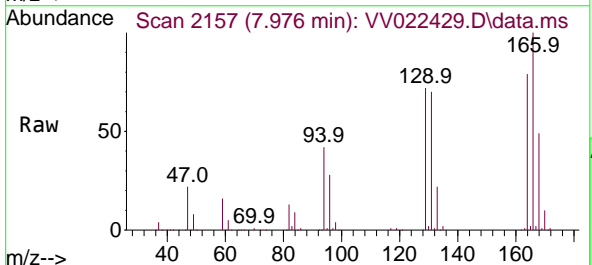
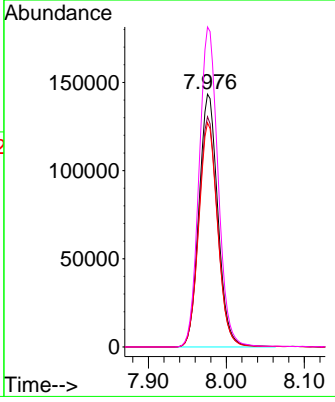
Ion	Ratio	Lower	Upper
97	100		
99	17.9	44.6	82.8#
83	322.1	59.8	111.1#
85	39.1	38.8	72.0

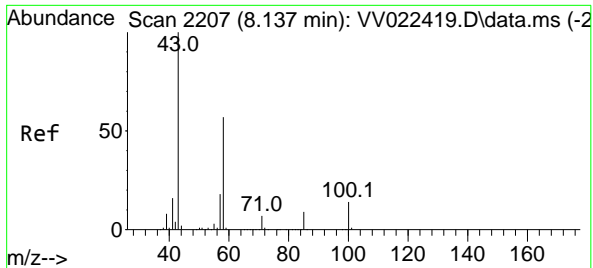


#46  
 Tetrachloroethene  
 Concen: 157.799 ug/L  
 RT: 7.976 min Scan# 2157  
 Delta R.T. -0.000 min  
 Lab File: VV022429.D  
 Acq: 30 Sep 2021 14:06

Tgt Ion: 164 Resp: 241287

Ion	Ratio	Lower	Upper
164	100		
129	91.1	66.4	123.4
131	88.7	63.6	118.0
166	126.6	91.6	170.0

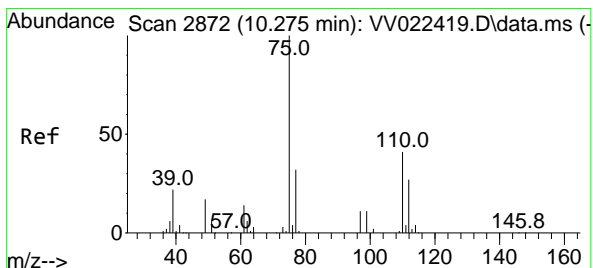
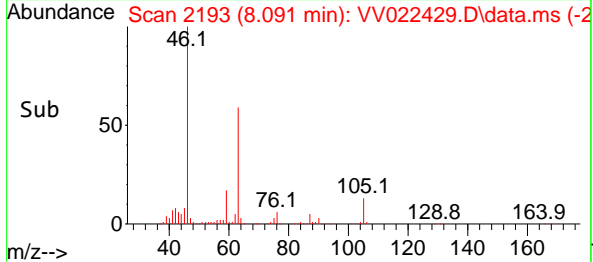
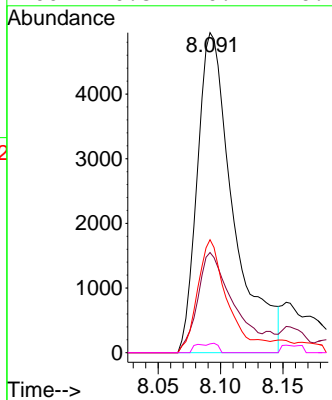
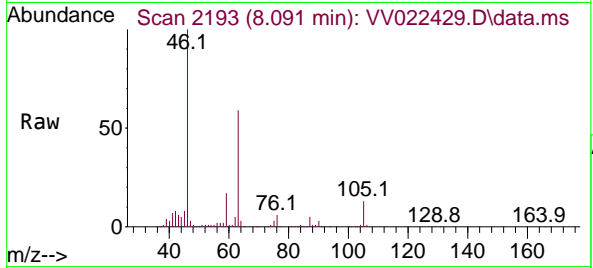




#48  
 2-Hexanone  
 Concen: 5.004 ug/L  
 RT: 8.091 min Scan# 2193  
 Delta R.T. -0.045 min  
 Lab File: VV022429.D  
 Acq: 30 Sep 2021 14:06

Instrument :  
 MSVOA\_V  
 ClientSampled :  
 F4A33

Tgt Ion	Resp	Lower	Upper
43	100		
58	30.8	45.4	68.2#
57	27.9	15.0	22.4#
100	0.8	10.7	16.1#



#61  
 1,2,3-Trichloropropane  
 Concen: 5.790 ug/L  
 RT: 11.249 min Scan# 3175  
 Delta R.T. 0.974 min  
 Lab File: VV022429.D  
 Acq: 30 Sep 2021 14:06

Tgt Ion	Resp	Lower	Upper
75	100		
77	30.5	25.4	38.0
110	1.6	32.6	48.8#

