

Data Path : Z:\voasrv\HPCHEM1\MSVOA\_V\Data\VV100221\  
 Data File : VV022517.D  
 Acq On : 02 Oct 2021 17:42  
 Operator : SY/MD  
 Sample : M3997-02DL 4X  
 Misc : 5.0mL/MSVOA\_V/WATER  
 ALS Vial : 17 Sample Multiplier: 1

Instrument :  
 MSVOA\_V  
 ClientSampled :  
 F4A48DL

Integration Parameters: LSCINT.P

Integrator: RTE  
 Smoothing : OFF Filtering: 5  
 Sampling : 1 Min Area: 0 % of largest Peak  
 Start Thrs: 0.2 Max Peaks: 100  
 Stop Thrs : 0 Peak Location: TOP

If leading or trailing edge < 100 prefer < Baseline drop else tangent >  
 Peak separation: 5

Method : Z:\voasrv\HPCHEM1\MSVOA\_V\Method\SFAMVLM100121WMA.M  
 Title : VOC Analysis

Signal : TIC: VV022517.D\data.ms

peak #	R.T. min	first scan	max scan	last scan	PK TY	peak height	corr. area	corr. % max.	% of total
1	1.201	45	50	58	rVB	21769	19046	2.76%	0.311%
2	1.304	76	82	98	rVB	105510	108900	15.79%	1.777%
3	1.568	157	164	175	rBV	90139	100046	14.50%	1.633%
4	2.108	322	332	362	rVB	187025	283707	41.13%	4.630%
5	2.510	451	457	463	rBV4	1384	1958	0.28%	0.032%
6	2.603	482	486	488	rBV2	602	454	0.07%	0.007%
7	2.767	531	537	543	rBV4	1270	1869	0.27%	0.031%
8	2.937	587	590	592	rBV	292	189	0.03%	0.003%
9	3.005	609	611	614	rBV	227	86	0.01%	0.001%
10	3.082	631	635	638	rBV2	303	234	0.03%	0.004%
11	3.166	659	661	668	rBV2	275	293	0.04%	0.005%
12	3.314	705	707	709	rBV	223	96	0.01%	0.002%
13	3.452	749	750	752	rBV	218	109	0.02%	0.002%
14	3.468	752	755	757	rVV2	298	172	0.02%	0.003%
15	3.590	790	793	799	rBV2	345	342	0.05%	0.006%
16	3.709	827	830	838	rBV2	356	434	0.06%	0.007%
17	3.741	838	840	845	rBB2	308	236	0.03%	0.004%
18	3.770	845	849	853	rBV2	163	184	0.03%	0.003%
19	3.802	856	859	861	rBV2	309	198	0.03%	0.003%
20	3.892	873	887	925	rBV	45488	161562	23.42%	2.637%
21	4.349	1014	1029	1057	rBV2	107490	275049	39.87%	4.489%
22	4.497	1074	1075	1080	rVB2	475	232	0.03%	0.004%
23	4.641	1115	1120	1122	rVV3	461	367	0.05%	0.006%
24	4.654	1122	1124	1126	rVV	350	143	0.02%	0.002%
25	4.706	1135	1140	1142	rBV	259	164	0.02%	0.003%
26	4.876	1188	1193	1194	rBV3	370	277	0.04%	0.005%
27	5.047	1229	1246	1277	rVV2	268287	689858	100.00%	11.258%
28	5.265	1311	1314	1318	rBV3	376	328	0.05%	0.005%
29	5.342	1334	1338	1341	rBV2	332	283	0.04%	0.005%
30	5.416	1357	1361	1362	rBV2	222	116	0.02%	0.002%
31	5.539	1396	1399	1404	rVB	417	353	0.05%	0.006%
32	5.567	1405	1408	1410	rBV	350	276	0.04%	0.005%
33	5.619	1410	1424	1448	rBV	245962	499081	72.35%	8.145%
34	5.802	1479	1481	1484	rBV	441	199	0.03%	0.003%
35	5.918	1505	1517	1532	rBV7	13768	32032	4.64%	0.523%
36	6.072	1552	1565	1591	rBV	150706	305438	44.28%	4.985%

Data Path : Z:\voasrv\HPCHEM1\MSVOA\_V\Data\VW100221\  
 Data File : VW022517.D  
 Acq On : 02 Oct 2021 17:42  
 Operator : SY/MD  
 Sample : M3997-02DL 4X  
 Misc : 5.0mL/MSVOA\_V/WATER  
 ALS Vial : 17 Sample Multiplier: 1

Instrument :  
 MSVOA\_V  
 ClientSampleId :  
 F4A48DL

Integration Parameters: LSCINT.P  
 Integrator: RTE  
 Smoothing : OFF  
 Sampling : 1  
 Start Thrs : 0.2  
 Stop Thrs : 0  
 Filtering: 5  
 Min Area: 0 % of largest Peak  
 Max Peaks: 100  
 Peak Location: TOP

If leading or trailing edge < 100 prefer < Baseline drop else tangent >  
 Peak separation: 5

Method : Z:\voasrv\HPCHEM1\MSVOA\_V\Method\SFAMVLM100121WMA.M  
 Title : VOC Analysis

37	6.252	1619	1621	1626	rBV2	240	166	0.02%	0.003%
38	6.307	1637	1638	1641	rVB	258	101	0.01%	0.002%
39	6.448	1678	1682	1685	rBV	388	308	0.04%	0.005%
40	6.619	1731	1735	1739	rBV	232	265	0.04%	0.004%
41	6.667	1746	1750	1752	rBV3	311	222	0.03%	0.004%
42	6.699	1757	1760	1765	rVB2	255	249	0.04%	0.004%
43	6.728	1765	1769	1770	rBV	289	193	0.03%	0.003%
44	6.854	1806	1808	1813	rBV2	152	159	0.02%	0.003%
45	6.989	1839	1850	1874	rBV	80282	148363	21.51%	2.421%
46	7.175	1903	1908	1909	rBV2	196	199	0.03%	0.003%
47	7.217	1914	1921	1924	rBV2	462	482	0.07%	0.008%
48	7.259	1930	1934	1935	rBV2	256	139	0.02%	0.002%
49	7.317	1941	1952	1971	rBV	319818	556585	80.68%	9.083%
50	7.551	2023	2025	2026	rBV	247	100	0.01%	0.002%
51	7.625	2037	2048	2072	rBV	54303	95877	13.90%	1.565%
52	7.899	2131	2133	2137	rBV	262	107	0.02%	0.002%
53	7.976	2145	2157	2182	rBV	337083	564954	81.89%	9.220%
54	8.091	2183	2193	2229	rBV	159619	292941	42.46%	4.781%
55	8.323	2262	2265	2266	rBV	276	167	0.02%	0.003%
56	8.384	2282	2284	2287	rBV2	421	234	0.03%	0.004%
57	8.574	2340	2343	2345	rBV2	287	165	0.02%	0.003%
58	8.622	2355	2358	2360	rBV	228	184	0.03%	0.003%
59	8.718	2385	2388	2392	rVB2	443	276	0.04%	0.005%
60	8.744	2393	2396	2398	rBV	312	216	0.03%	0.004%
61	8.854	2418	2430	2455	rBV	377899	605447	87.76%	9.881%
62	9.181	2530	2532	2534	rBV	245	137	0.02%	0.002%
63	9.632	2670	2672	2675	rBV2	208	129	0.02%	0.002%
64	9.657	2678	2680	2683	rVV2	177	108	0.02%	0.002%
65	9.673	2683	2685	2688	rVB2	163	99	0.01%	0.002%
66	9.738	2701	2705	2707	rBV	309	242	0.04%	0.004%
67	9.776	2713	2717	2720	rBV	264	264	0.04%	0.004%
68	9.886	2749	2751	2756	rVB	282	158	0.02%	0.003%
69	9.921	2756	2762	2766	rBV2	197	307	0.04%	0.005%
70	10.062	2803	2806	2809	rBV2	294	237	0.03%	0.004%
71	10.098	2815	2817	2819	rBV	249	148	0.02%	0.002%
72	10.124	2821	2825	2826	rBV	1483	961	0.14%	0.016%
73	10.217	2842	2854	2875	rBV	204532	319980	46.38%	5.222%
74	10.361	2896	2899	2901	rBV2	455	245	0.04%	0.004%
75	10.455	2924	2928	2931	rBV3	327	275	0.04%	0.004%
76	10.506	2942	2944	2947	rBV2	186	145	0.02%	0.002%

Data Path : Z:\voasrv\HPCHEM1\MSVOA\_V\Data\VW100221\  
 Data File : VW022517.D  
 Acq On : 02 Oct 2021 17:42  
 Operator : SY/MD  
 Sample : M3997-02DL 4X  
 Misc : 5.0mL/MSVOA\_V/WATER  
 ALS Vial : 17 Sample Multiplier: 1

Instrument :  
 MSVOA\_V  
 ClientSampleId :  
 F4A48DL

Integration Parameters: LSCINT.P  
 Integrator: RTE  
 Smoothing : OFF  
 Sampling : 1  
 Start Thrs : 0.2  
 Stop Thrs : 0  
 Filtering: 5  
 Min Area: 0 % of largest Peak  
 Max Peaks: 100  
 Peak Location: TOP

If leading or trailing edge < 100 prefer < Baseline drop else tangent >  
 Peak separation: 5

Method : Z:\voasrv\HPCHEM1\MSVOA\_V\Method\SFAMVLM100121WMA.M  
 Title : VOC Analysis

77	10.567	2960	2963	2964	rBV	331	196	0.03%	0.003%
78	10.606	2971	2975	2978	rBV3	392	288	0.04%	0.005%
79	10.751	3017	3020	3026	rVV2	257	230	0.03%	0.004%
80	10.821	3040	3042	3045	rBV2	215	120	0.02%	0.002%
81	10.956	3082	3084	3086	rBV2	235	89	0.01%	0.001%
82	10.988	3091	3094	3099	rBV2	321	335	0.05%	0.005%
83	11.249	3164	3175	3195	rBV	367389	558495	80.96%	9.114%
84	11.432	3225	3232	3236	rBV7	958	1319	0.19%	0.022%
85	11.496	3249	3252	3255	rBV2	148	130	0.02%	0.002%
86	11.525	3259	3261	3266	rBV2	449	242	0.04%	0.004%
87	11.548	3266	3268	3273	rBV3	227	202	0.03%	0.003%
88	11.625	3281	3292	3315	rBV	314858	487532	70.67%	7.956%
89	11.857	3361	3364	3365	rVB	290	125	0.02%	0.002%
90	11.969	3397	3399	3401	rBV	234	114	0.02%	0.002%
91	12.201	3469	3471	3473	rBV	221	126	0.02%	0.002%
92	12.358	3518	3520	3525	rVB2	396	184	0.03%	0.003%
93	13.001	3717	3720	3723	rBV	294	231	0.03%	0.004%
94	13.095	3746	3749	3751	rBV	224	154	0.02%	0.003%
95	13.342	3824	3826	3827	rBV	242	101	0.01%	0.002%
96	13.667	3924	3927	3930	rBV2	212	145	0.02%	0.002%
97	13.686	3930	3933	3935	rBV	207	148	0.02%	0.002%
98	13.741	3948	3950	3952	rBV	296	176	0.03%	0.003%
99	14.516	4185	4191	4199	rBV3	420	701	0.10%	0.011%
100	14.586	4210	4213	4215	rBV2	456	362	0.05%	0.006%

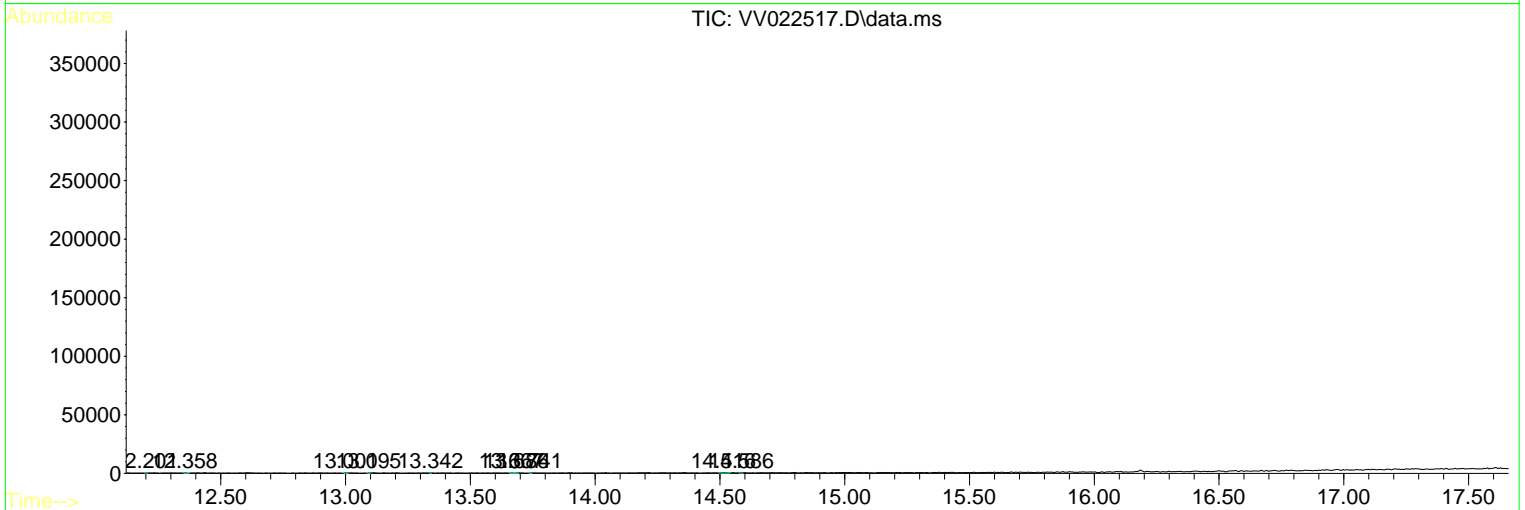
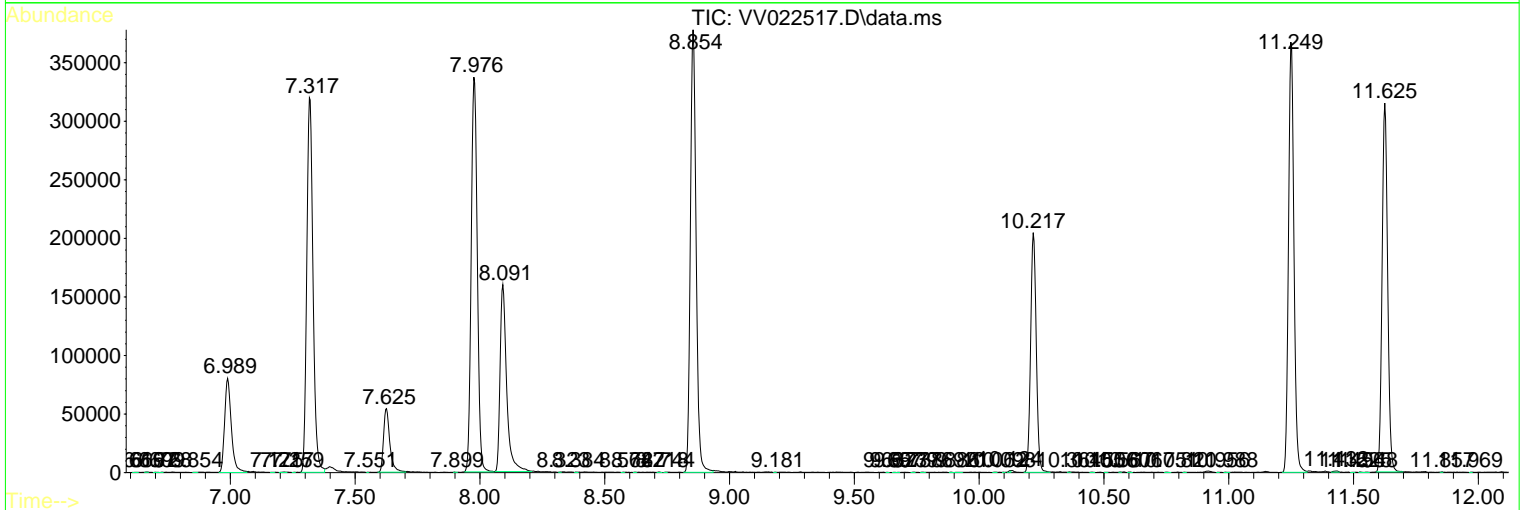
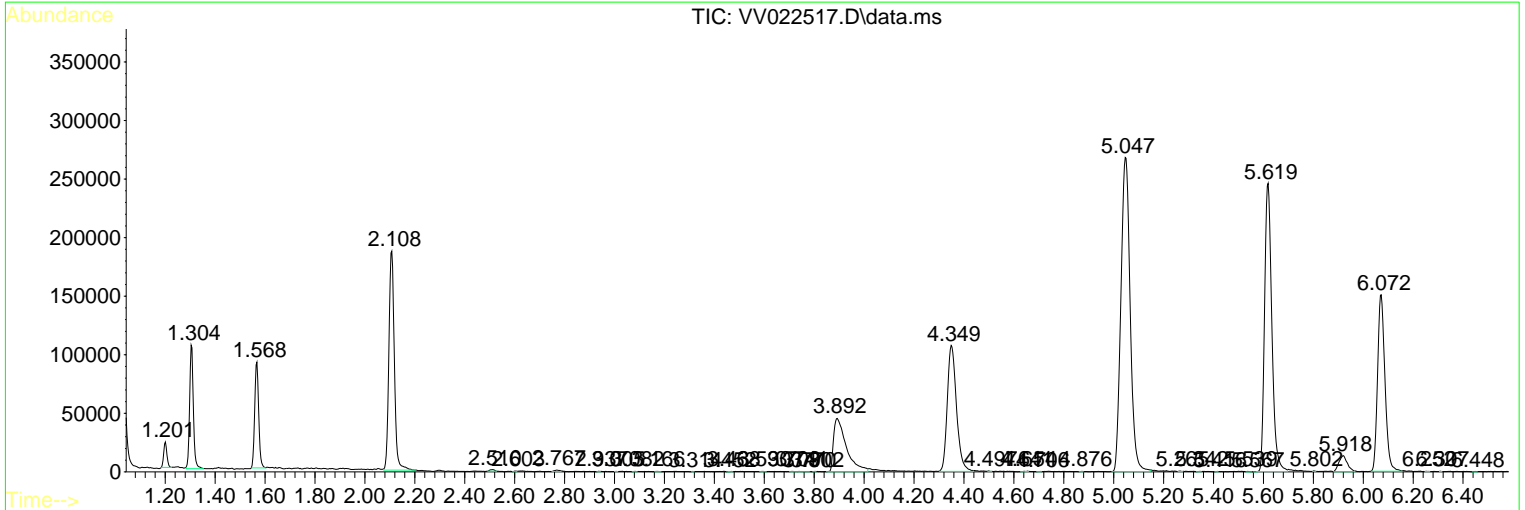
Sum of corrected areas: 6127590

Data Path : Z:\voasrv\HPCHEM1\MSVOA\_V\Data\VV100221\  
 Data File : VV022517.D  
 Acq On : 02 Oct 2021 17:42  
 Operator : SY/MD  
 Sample : M3997-02DL 4X  
 Misc : 5.0mL/MSVOA\_V/WATER  
 ALS Vial : 17 Sample Multiplier: 1

Instrument :  
 MSVOA\_V  
 ClientSampled :  
 F4A48DL

Quant Method : Z:\voasrv\HPCHEM1\MSVOA\_V\Method\SFAMVLM100121WMA.M  
 Quant Title : VOC Analysis

TIC Library : C:\Database\NIST20.L  
 TIC Integration Parameters: LSCINT.P



Library Search Compound Report

Data Path : Z:\voasrv\HPCHEM1\MSVOA\_V\Data\VV100221\  
Data File : VV022517.D  
Acq On : 02 Oct 2021 17:42  
Operator : SY/MD  
Sample : M3997-02DL 4X  
Misc : 5.0mL/MSVOA\_V/WATER  
ALS Vial : 17 Sample Multiplier: 1

Instrument :  
MSVOA\_V  
ClientSampleId :  
F4A48DL

Quant Method : Z:\voasrv\HPCHEM1\MSVOA\_V\Method\SFAMVLM100121WMA.M  
Quant Title : VOC Analysis

TIC Library : C:\Database\NIST20.L  
TIC Integration Parameters: LSCINT.P

No Library Search Compounds Detected

\*\*\*\*\*

Data Path : Z:\voasrv\HPCHEM1\MSVOA\_V\Data\VV100221\  
Data File : VV022517.D  
Acq On : 02 Oct 2021 17:42  
Operator : SY/MD  
Sample : M3997-02DL 4X  
Misc : 5.0mL/MSVOA\_V/WATER  
ALS Vial : 17 Sample Multiplier: 1

Instrument :  
MSVOA\_V  
ClientSampled :  
F4A48DL

Quant Method : Z:\voasrv\HPCHEM1\MSVOA\_V\Method\SFAMVLM100121WMA.M  
Quant Title : VOC Analysis

TIC Library : C:\Database\NIST0.L  
TIC Integration Parameters: LSCINT.P

TIC Top Hit name	RT	EstConc	Units	Response	--Internal Standard--		
					#	RT	Resp Conc

---