

Data Path : Z:\VOASRV\HPCHEM1\MSVOA\_V\DATA\VV100418\  
 Data File : VV008063.D  
 Acq On : 04 Oct 2018 15:28  
 Operator : SY/MD  
 Sample : J5246-05  
 Misc : 25.0 mL/MSVOA\_V/WATER  
 ALS Vial : 10 Sample Multiplier: 1

Instrument :  
 MSVOA\_V  
 ClientSampleId :  
 C0J73

Integration Parameters: rteint.p  
 Integrator: RTE  
 Smoothing : ON Filtering: 5  
 Sampling : 1 Min Area: 3 % of largest Peak  
 Start Thrs: 0.1 Max Peaks: 100  
 Stop Thrs : 0 Peak Location: TOP

If leading or trailing edge < 100 prefer < Baseline drop else tangent >  
 Peak separation: 5

Method : Z:\VOASRV\HPCHEM1\MSVOA\_V\METHOD\SOMVTR092718WMA.M  
 Title : TRACE VOA SOM01.0

Signal : TIC

peak #	R.T. min	first scan	max scan	last scan	PK TY	peak height	corr. area	corr. % max.	% of total
1	2.135	315	325	337	rBV	62179	88890	1.85%	1.267%
2	3.962	878	893	905	rBV	45642	121545	2.53%	1.733%
3	4.408	1015	1032	1053	rVB	49886	118600	2.47%	1.691%
4	5.100	1227	1247	1277	rBV2	115292	267635	5.57%	3.815%
5	5.669	1410	1424	1442	rBV	96130	185382	3.86%	2.643%
6	6.122	1550	1565	1581	rBV	66251	131554	2.74%	1.875%
7	7.035	1838	1849	1864	rBV2	30088	53532	1.11%	0.763%
8	7.363	1938	1951	1965	rBV	127857	218943	4.56%	3.121%
9	8.022	2132	2156	2182	rBV	2905250	4806619	100.00%	68.519%
10	8.141	2182	2193	2224	rVB	152056	290640	6.05%	4.143%
11	8.900	2415	2429	2449	rBV	138875	228400	4.75%	3.256%
12	10.267	2841	2854	2870	rBV	49096	77200	1.61%	1.100%
13	11.299	3164	3175	3196	rVB	128158	215110	4.48%	3.066%
14	11.675	3280	3292	3315	rBV	126107	210944	4.39%	3.007%

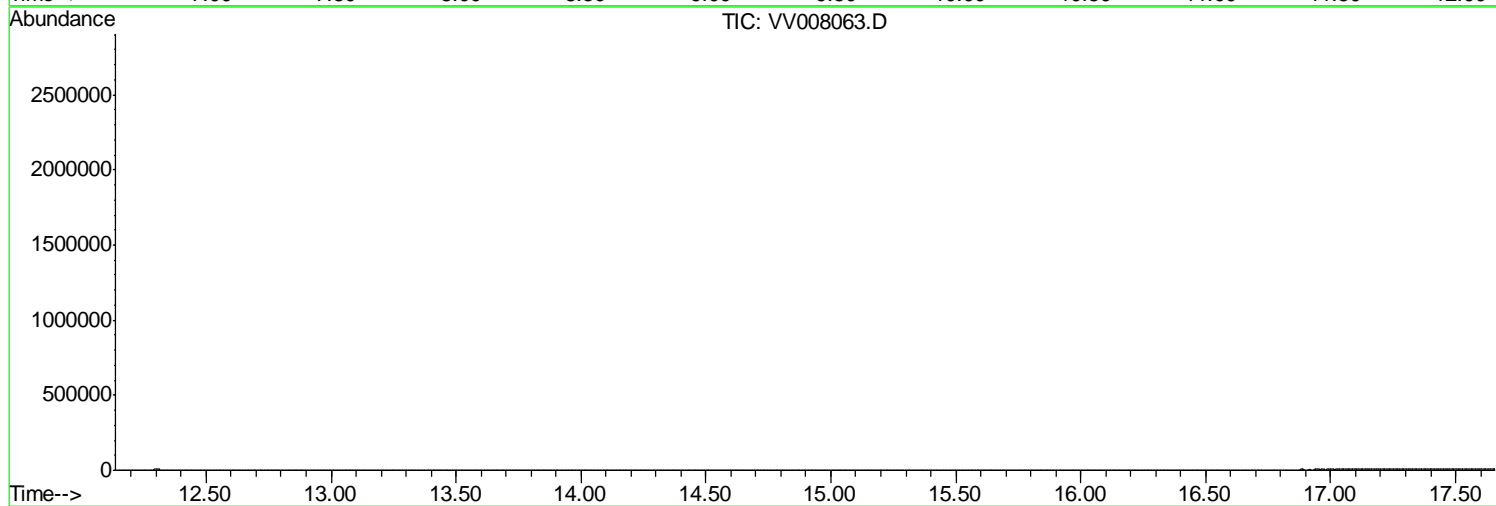
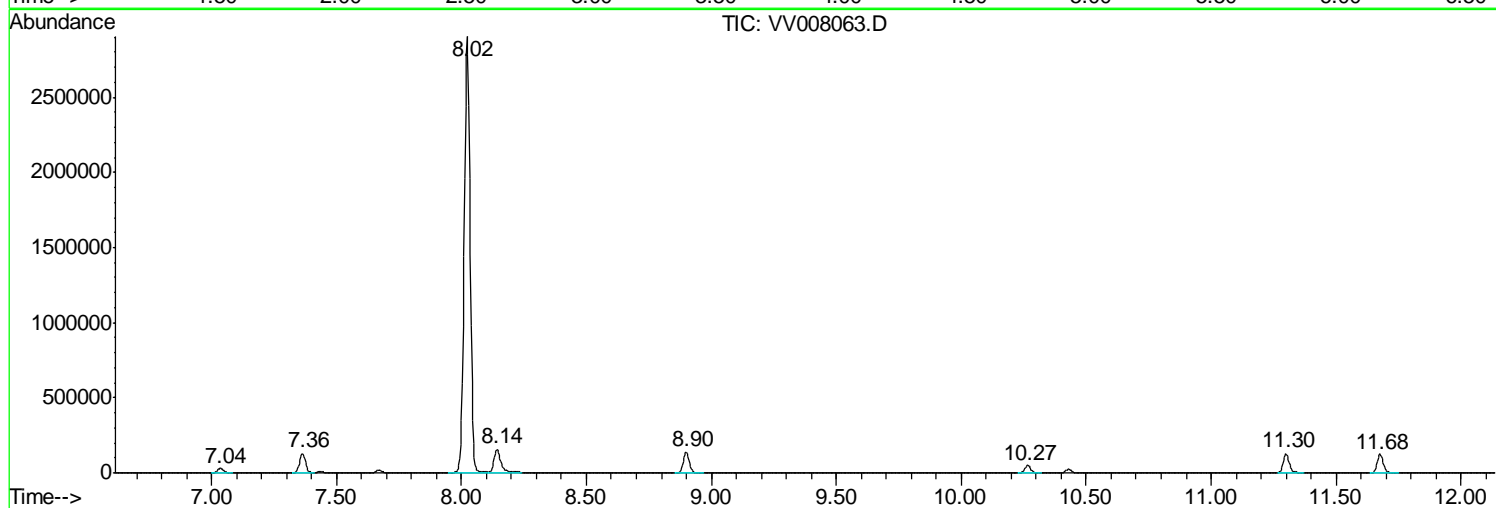
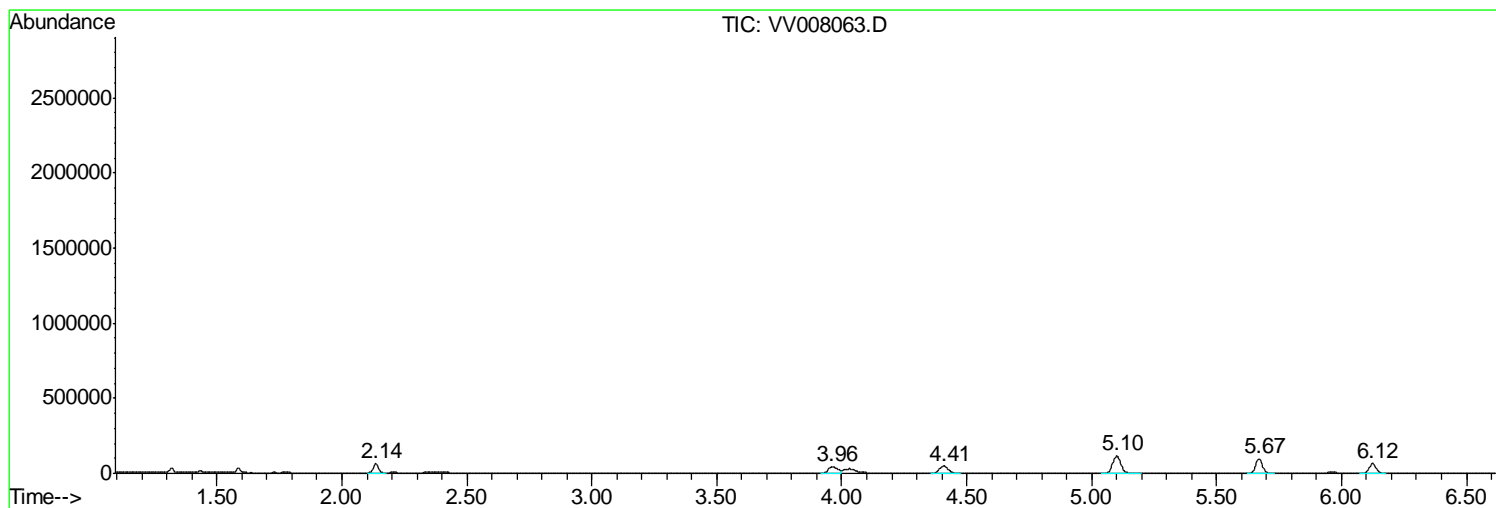
Sum of corrected areas: 7014994

Data Path : Z:\VOASRV\HPCHEM1\MSVOA\_V\DATA\VV100418\  
Data File : VV008063.D  
Acq On : 04 Oct 2018 15:28  
Operator : SY/MD  
Sample : J5246-05  
Misc : 25.0 mL/MSVOA\_V/WATER  
ALS Vial : 10 Sample Multiplier: 1

Instrument :  
MSVOA\_V  
ClientSampleId :  
C0J73

Quant Method : Z:\VOASRV\HPCHEM1\MSVOA\_V\METHOD\SOMVTR092718WMA.M  
Quant Title : TRACE VOA SOM01.0

TIC Library : C:\DATABASE\NIST11.L  
TIC Integration Parameters: LSCINT.P



Data Path : Z:\VOASRV\HPCHEM1\MSVOA\_V\DATA\VV100418\  
Data File : VV008063.D  
Acq On : 04 Oct 2018 15:28  
Operator : SY/MD  
Sample : J5246-05  
Misc : 25.0 mL/MSVOA\_V/WATER  
ALS Vial : 10 Sample Multiplier: 1

Instrument :  
MSVOA\_V  
ClientSampleId :  
C0J73

Quant Method : Z:\VOASRV\HPCHEM1\MSVOA\_V\METHOD\SOMVTR092718WMA.M  
Quant Title : TRACE VOA SOM01.0

TIC Library : C:\DATABASE\NIST11.L  
TIC Integration Parameters: LSCINT.P

No Library Search Compounds Detected

\*\*\*\*\*

Data Path : Z:\VOASRV\HPCHEM1\MSVOA\_V\DATA\VV100418\  
Data File : VV008063.D  
Acq On : 04 Oct 2018 15:28  
Operator : SY/MD  
Sample : J5246-05  
Misc : 25.0 mL/MSVOA\_V/WATER  
ALS Vial : 10 Sample Multiplier: 1

Instrument :  
MSVOA\_V  
ClientSampleId :  
C0J73

Quant Method : Z:\VOASRV\HPCHEM1\MSVOA\_V\METHOD\SOMVTR092718WMA.M  
Quant Title : TRACE VOA SOM01.0

TIC Library : C:\DATABASE\NIST11.L  
TIC Integration Parameters: LSCINT.P

TIC Top Hit name	RT	EstConc	Units	Response	--Internal Standard--			
					#	RT	Resp	Conc

---