

Data Path : Z:\VOASRV\HPCHEM1\MSVOA V\DATA\VV100520\
 Data File : VV018682.D
 Acq On : 05 Oct 2020 18:45
 Operator : SY/MD
 Sample : VSTDCCC050EC
 Misc : 5.0mL/MSVOA V/WATER
 ALS Vial : 17 Sample Multiplier: 1

Instrument :
 MSVOA_V
 ClientSampled :

Quant Time: Oct 06 02:13:57 2020
 Quant Method : Z:\VOASRV\HPCHEM1\MSVOA_V\METHOD\SOMVLM092920WMA.M
 Quant Title : VOC Analysis
 QLast Update : Tue Oct 06 02:11:36 2020
 Response via : Initial Calibration

Internal Standards	R.T.	QIon	Response	Conc	Units	Dev(Min)
1) 1,4-Difluorobenzene	5.64	114	297073	50.00	ug/L	0.00
28) Chlorobenzene-d5	8.87	117	257602	50.00	ug/L	0.00
60) 1,4-Dichlorobenzene-d4	11.27	152	136680	50.00	ug/L	0.00

System Monitoring Compounds

4) Vinyl Chloride-d3	1.32	65	71836	41.23	ug/L	0.00
Spiked Amount	50.000	Range	60 - 135	Recovery	=	82.46%
7) Chloroethane-d5	1.58	69	61886	42.96	ug/L	0.00
Spiked Amount	50.000	Range	70 - 130	Recovery	=	85.92%
11) 1,1-Dichloroethene-d2	2.12	63	152955	43.09	ug/L	0.00
Spiked Amount	50.000	Range	60 - 125	Recovery	=	86.18%
21) 2-Butanone-d5	3.91	46	108785	83.71	ug/L	0.00
Spiked Amount	100.000	Range	40 - 130	Recovery	=	83.71%
24) Chloroform-d	4.38	84	149697	39.73	ug/L	0.00
Spiked Amount	50.000	Range	70 - 125	Recovery	=	79.46%
26) 1,2-Dichloroethane-d4	5.06	65	99977	41.80	ug/L	0.00
Spiked Amount	50.000	Range	70 - 125	Recovery	=	83.60%
32) Benzene-d6	5.07	84	270098	41.39	ug/L	0.00
Spiked Amount	50.000	Range	70 - 125	Recovery	=	82.78%
36) 1,2-Dichloropropane-d6	6.09	67	96245	48.82	ug/L	0.00
Spiked Amount	50.000	Range	70 - 120	Recovery	=	97.64%
41) Toluene-d8	7.34	98	248806	40.53	ug/L	0.00
Spiked Amount	50.000	Range	80 - 120	Recovery	=	81.06%
43) trans-1,3-Dichloropropene-	7.64	79	44224	41.52	ug/L	0.00
Spiked Amount	50.000	Range	60 - 125	Recovery	=	83.04%
47) 2-Hexanone-d5	8.11	63	65524	87.50	ug/L	0.00
Spiked Amount	100.000	Range	45 - 130	Recovery	=	87.50%
57) 1,1,2,2-Tetrachloroethane-	10.24	84	112418	43.01	ug/L	0.00
Spiked Amount	50.000	Range	65 - 120	Recovery	=	86.02%
64) 1,2-Dichlorobenzene-d4	11.65	152	111030	42.24	ug/L	0.00
Spiked Amount	50.000	Range	80 - 120	Recovery	=	84.48%

Target Compounds

Target Compounds	R.T.	QIon	Response	Conc	Units	Ovalue
2) Dichlorodifluoromethane	1.14	85	76114	37.681	ug/L	99
3) Chloromethane	1.25	50	91228	42.209	ug/L	99
5) Vinyl chloride	1.32	62	94370	41.529	ug/L	96
6) Bromomethane	1.53	94	65562	42.391	ug/L	100
8) Chloroethane	1.60	64	59723	42.649	ug/L	98
9) Trichlorofluoromethane	1.77	101	146569	42.438	ug/L	99
10) 1,1,2-Trichloro-1,2,2-trif	2.13	101	79695	41.228	ug/L	96
12) 1,1-Dichloroethene	2.13	96	76894	41.464	ug/L	96
13) Acetone	2.20	43	102139	90.969	ug/L	98
14) Carbon disulfide	2.31	76	241686	40.231	ug/L	99
15) Methyl Acetate	2.45	43	90865	42.007	ug/L	99
16) Methylene chloride	2.52	84	92944	41.758	ug/L	98
17) trans-1,2-Dichloroethene	2.78	96	77318	36.436	ug/L	95
18) Methyl tert-butyl Ether	2.78	73	246456	38.119	ug/L	98
19) 1,1-Dichloroethane	3.21	63	147246	39.631	ug/L	100
20) cis-1,2-Dichloroethene	3.94	96	86344	38.287	ug/L	94
22) 2-Butanone	4.00	43	115874	81.695	ug/L	99

Data Path : Z:\VOASRV\HPCHEM1\MSVOA V\DATA\VV100520\
 Data File : VV018682.D
 Acq On : 05 Oct 2020 18:45
 Operator : SY/MD
 Sample : VSTDCCC050EC
 Misc : 5.0mL/MSVOA V/WATER
 ALS Vial : 17 Sample Multiplier: 1

Instrument :
 MSVOA_V
 ClientSampleId :

Quant Time: Oct 06 02:13:57 2020
 Quant Method : Z:\VOASRV\HPCHEM1\MSVOA_V\METHOD\SOMVLM092920WMA.M
 Quant Title : VOC Analysis
 QLast Update : Tue Oct 06 02:11:36 2020
 Response via : Initial Calibration

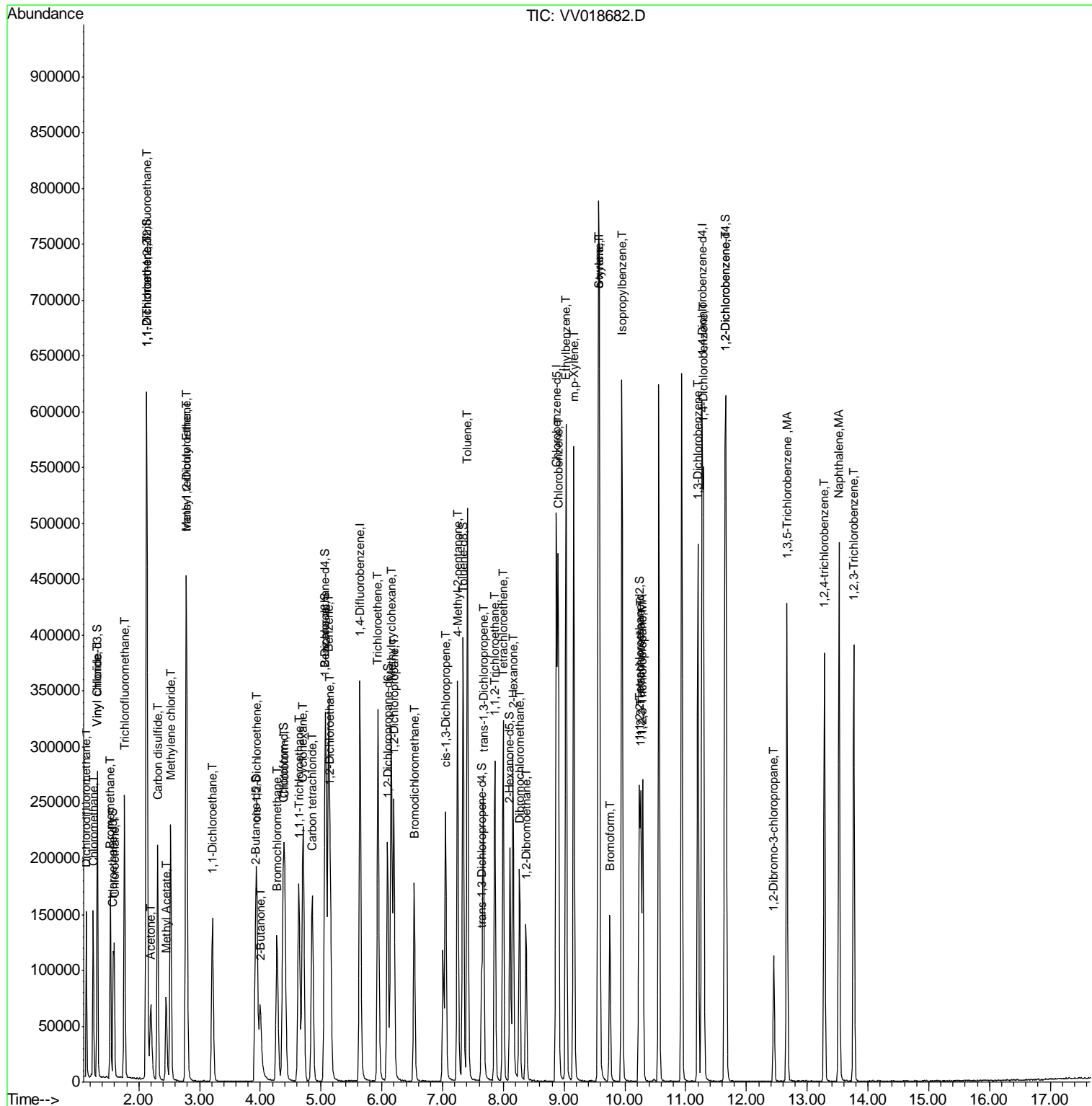
Internal Standards	R.T.	QIon	Response	Conc	Units	Dev(Min)
23) Bromochloromethane	4.28	128	45842	36.966	ug/L	96
25) Chloroform	4.40	83	154484	39.377	ug/L	98
27) 1,2-Dichloroethane	5.15	62	128195	41.923	ug/L	97
29) Cyclohexane	4.70	56	121526	41.363	ug/L	99
30) 1,1,1-Trichloroethane	4.63	97	141653	44.294	ug/L	98
31) Carbon tetrachloride	4.86	117	124651	43.430	ug/L	100
33) Benzene	5.13	78	320904	42.403	ug/L	100
34) Trichloroethene	5.94	95	109442	49.812	ug/L	98
35) Methylcyclohexane	6.15	83	126260	42.599	ug/L	97
37) 1,2-Dichloropropane	6.20	63	94258	48.545	ug/L	99
38) Bromodichloromethane	6.53	83	116377	44.755	ug/L	98
39) cis-1,3-Dichloropropene	7.05	75	132909	43.629	ug/L	96
40) 4-Methyl-2-pentanone	7.24	43	224828	89.736	ug/L	99
42) Toluene	7.41	91	354235	43.268	ug/L	99
44) trans-1,3-Dichloropropene	7.67	75	133859	44.731	ug/L	99
45) 1,1,2-Trichloroethane	7.86	97	84683	44.057	ug/L	98
46) Tetrachloroethene	8.00	164	67707	37.985	ug/L	96
48) 2-Hexanone	8.16	43	180965	92.572	ug/L	96
49) Dibromochloromethane	8.27	129	94191	42.844	ug/L	98
50) 1,2-Dibromoethane	8.37	107	88511	43.310	ug/L #	98
51) Chlorobenzene	8.90	112	231425	41.784	ug/L	97
52) Ethylbenzene	9.03	91	392188	42.895	ug/L	100
53) m,p-Xylene	9.16	106	152413	43.135	ug/L	99
54) o-xylene	9.56	106	144599	43.224	ug/L	100
55) Styrene	9.58	104	258867	44.441	ug/L	94
56) Isopropylbenzene	9.95	105	379253	42.272	ug/L	99
58) 1,1,2,2-Tetrachloroethane	10.26	83	111464	41.141	ug/L	99
59) 1,2,3-Trichloropropane	10.29	75	102245	43.292	ug/L	99
61) Bromoform	9.75	173	63613	40.518	ug/L #	97
62) 1,3-Dichlorobenzene	11.20	146	186490	42.160	ug/L	98
63) 1,4-Dichlorobenzene	11.29	146	192313	42.221	ug/L	99
65) 1,2-Dichlorobenzene	11.67	146	186285	42.570	ug/L	98
66) 1,2-Dibromo-3-chloropropan	12.45	75	27429	45.915	ug/L	85
67) 1,3,5-Trichlorobenzene	12.67	180	123046	40.158	ug/L	97
68) 1,2,4-trichlorobenzene	13.28	180	105864	37.130	ug/L	98
69) Naphthalene	13.52	128	352070	43.137	ug/L	99
70) 1,2,3-Trichlorobenzene	13.77	180	111295	38.884	ug/L	98

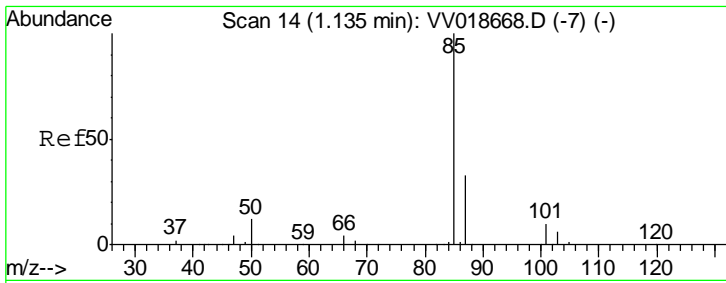
(#) = qualifier out of range (m) = manual integration (+) = signals summed

Data Path : Z:\VOASRV\HPCHEM1\MSVOA V\DATA\VV100520\
 Data File : VV018682.D
 Acq On : 05 Oct 2020 18:45
 Operator : SY/MD
 Sample : VSTDCCC050EC
 Misc : 5.0mL/MSVOA V/WATER
 ALS Vial : 17 Sample Multiplier: 1

Instrument :
 MSVOA_V
 Client Sampled :

Quant Time: Oct 06 02:13:57 2020
 Quant Method : Z:\VOASRV\HPCHEM1\MSVOA_V\METHOD\SOMVLM092920WMA.M
 Quant Title : VOC Analysis
 QLast Update : Tue Oct 06 02:11:36 2020
 Response via : Initial Calibration

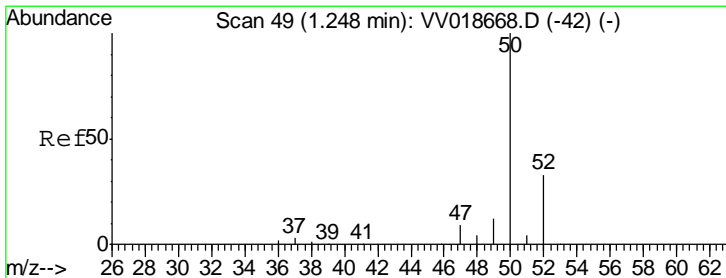
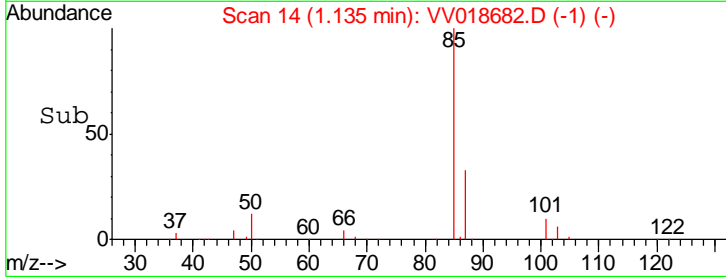
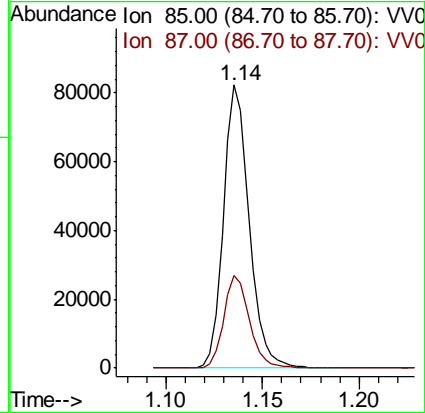
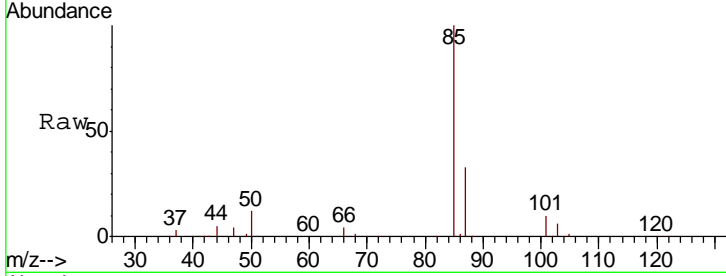




#2
 Dichlorodifluoromethane
 Concen: 37.681 ug/L
 RT: 1.14 min Scan# 14
 Delta R.T. -0.00 min
 Lab File: VV018682.D
 Acq: 05 Oct 2020 18:45

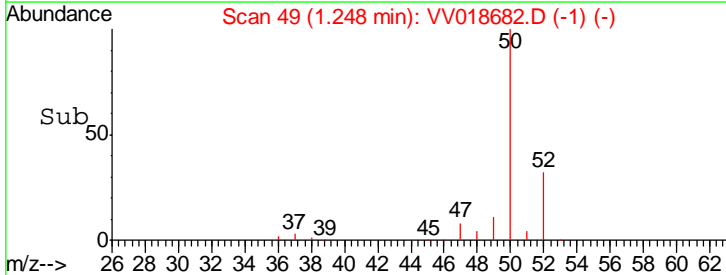
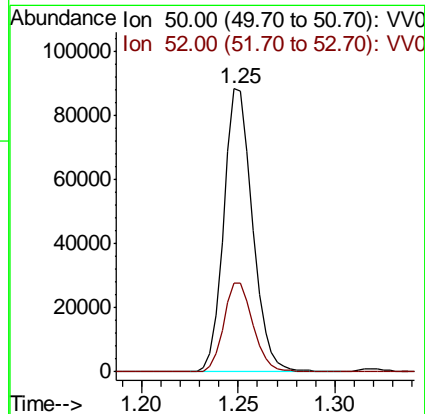
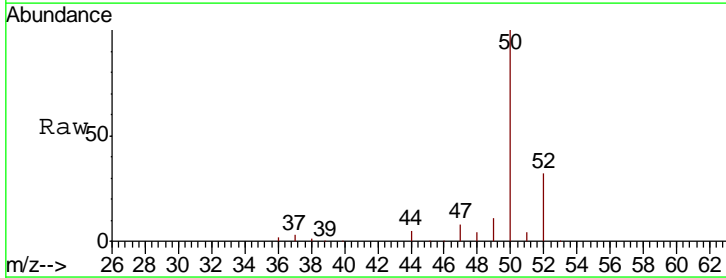
Instrument :
 MSVOA_V
 ClientSampled :

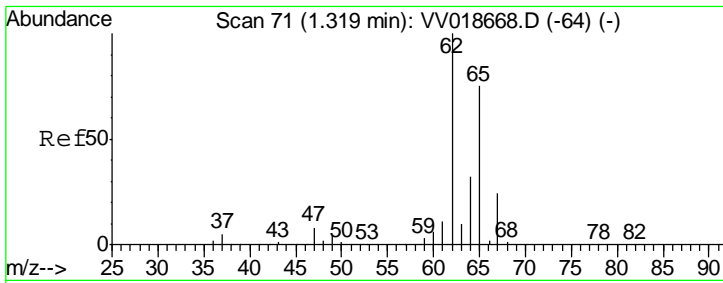
Tgt Ion	Resp	Lower	Upper
85	100		
87	32.7	25.5	38.3



#3
 Chloromethane
 Concen: 42.209 ug/L
 RT: 1.25 min Scan# 49
 Delta R.T. -0.00 min
 Lab File: VV018682.D
 Acq: 05 Oct 2020 18:45

Tgt Ion	Resp	Lower	Upper
50	100		
52	31.6	22.7	42.1

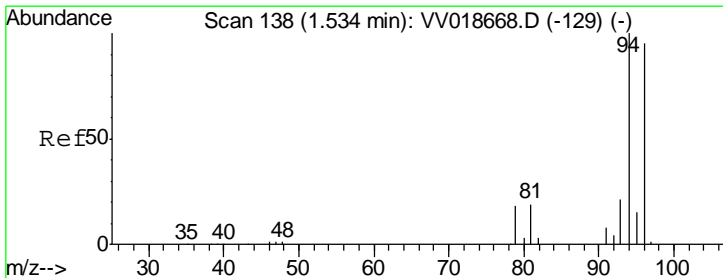
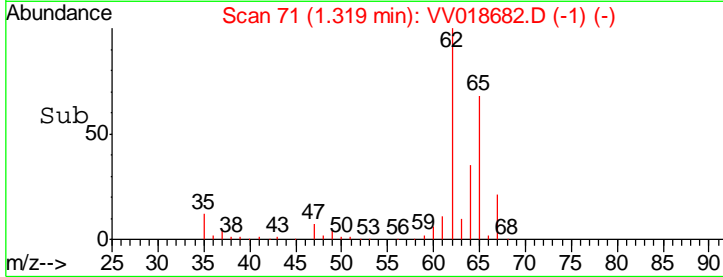
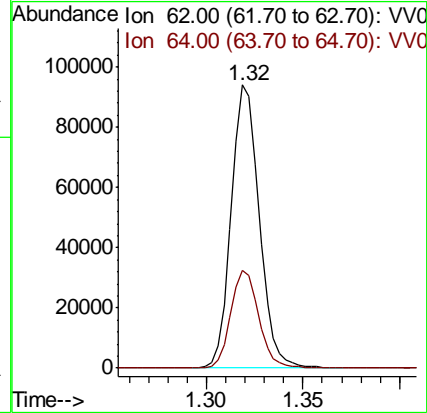
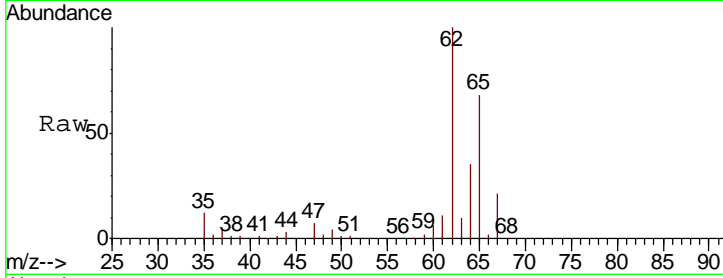




#5
 Vinyl chloride
 Concen: 41.529 ug/L
 RT: 1.32 min Scan# 71
 Delta R.T. -0.00 min
 Lab File: VV018682.D
 Acq: 05 Oct 2020 18:45

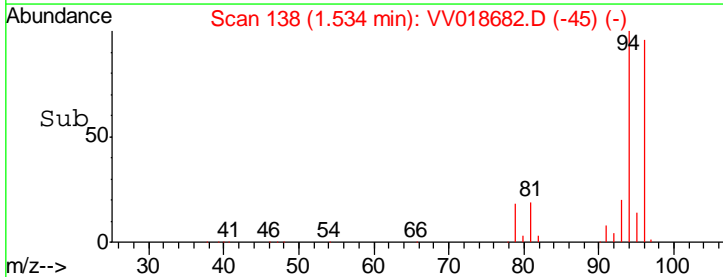
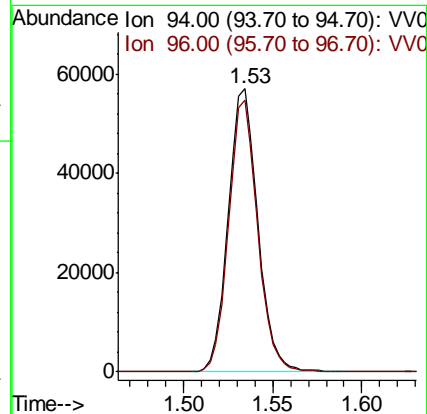
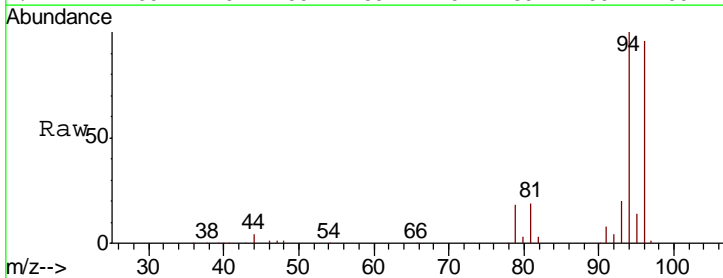
Instrument :
 MSVOA_V
 ClientSampled :

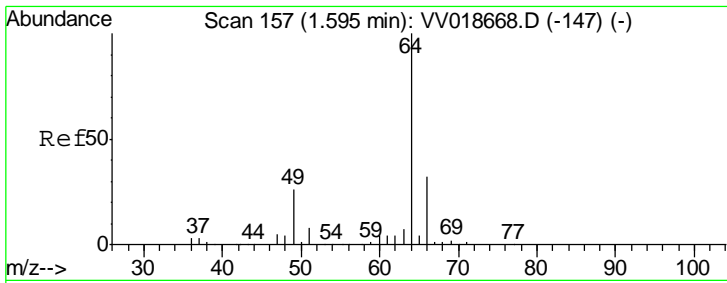
Tgt Ion	Resp	Lower	Upper
62	100		
64	34.7	22.9	42.5



#6
 Bromomethane
 Concen: 42.391 ug/L
 RT: 1.53 min Scan# 138
 Delta R.T. -0.00 min
 Lab File: VV018682.D
 Acq: 05 Oct 2020 18:45

Tgt Ion	Resp	Lower	Upper
94	100		
96	96.2	67.5	125.4

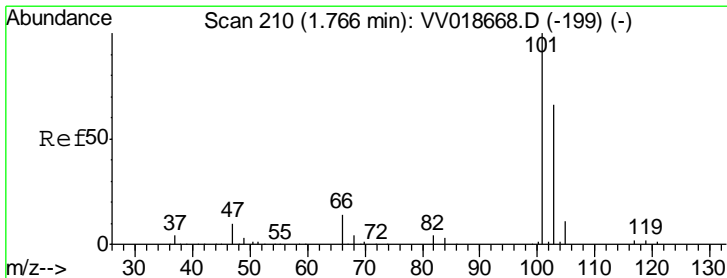
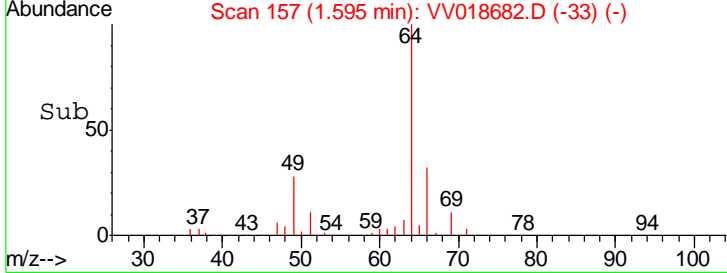
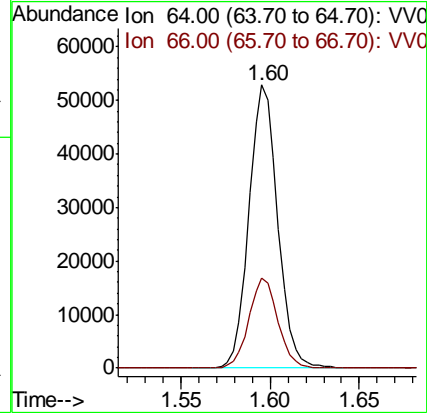
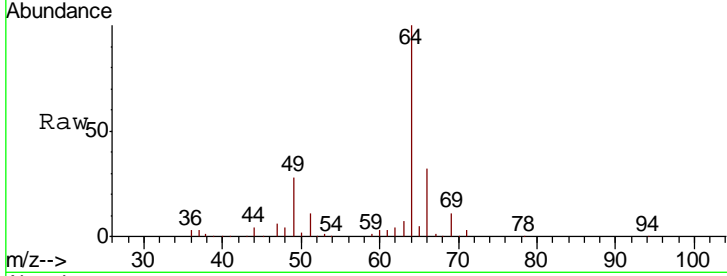




#8
 Chloroethane
 Concen: 42.649 ug/L
 RT: 1.60 min Scan# 157
 Delta R.T. -0.00 min
 Lab File: VV018682.D
 Acq: 05 Oct 2020 18:45

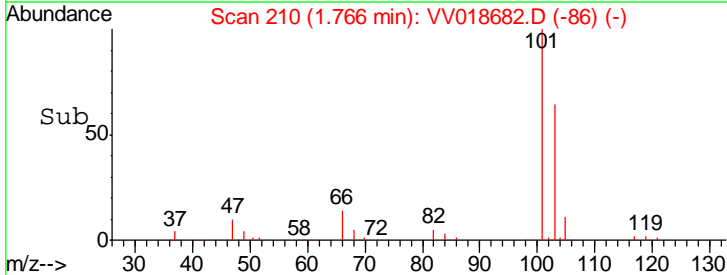
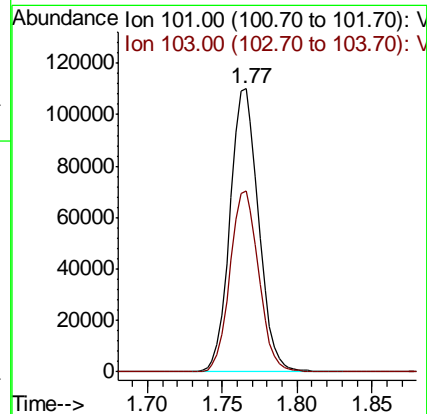
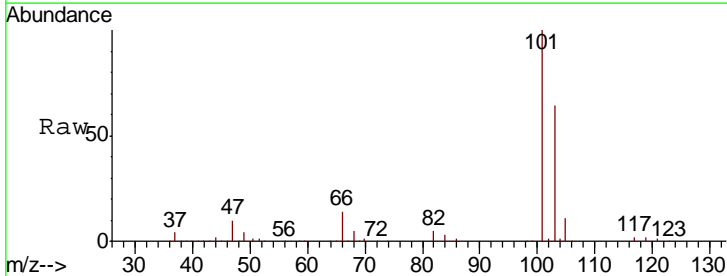
Instrument :
 MSVOA_V
 ClientSampled :

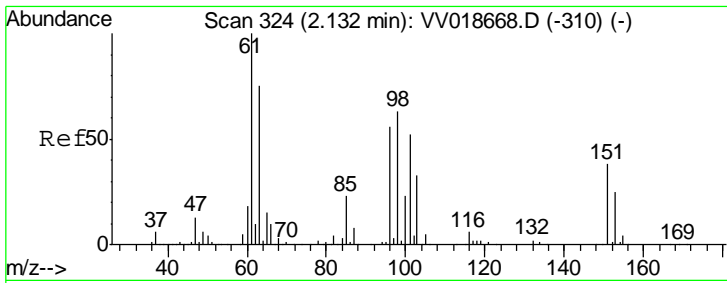
Tgt Ion	Resp	Lower	Upper
64	100		
66	31.7	22.8	42.4



#9
 Trichlorofluoromethane
 Concen: 42.438 ug/L
 RT: 1.77 min Scan# 210
 Delta R.T. -0.00 min
 Lab File: VV018682.D
 Acq: 05 Oct 2020 18:45

Tgt Ion	Resp	Lower	Upper
101	100		
103	64.2	51.9	77.9





#10

1,1,2-Trichloro-1,2,2-trifluoroethane

Concen: 41.228 ug/L

RT: 2.13 min Scan# 324

Delta R.T. -0.00 min

Lab File: VV018682.D

Acq: 05 Oct 2020 18:45

Instrument :
MSVOA_V
ClientSampled :

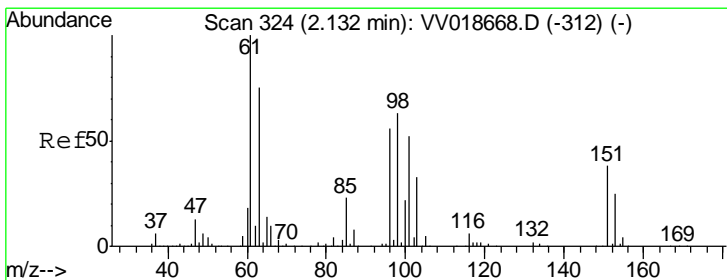
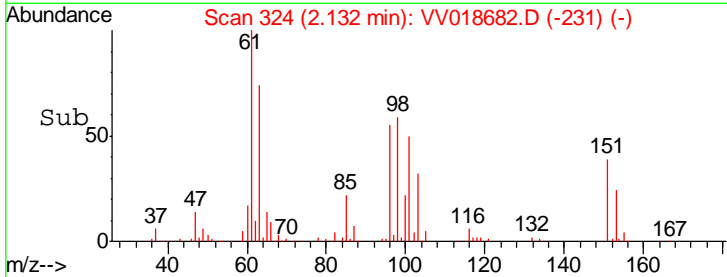
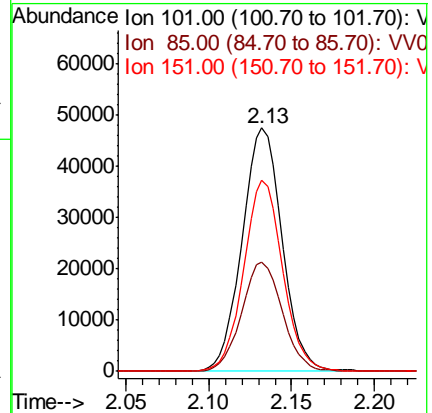
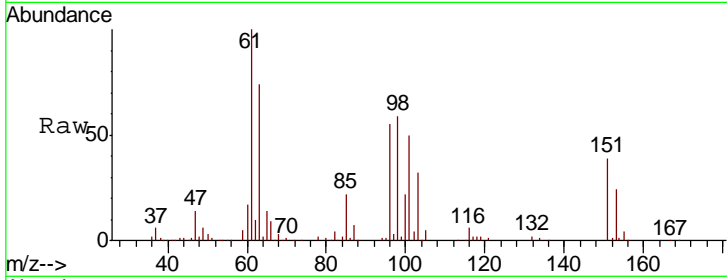
Tot Ion:101 Resp: 79695

Ion Ratio Lower Upper

101 100

85 45.6 34.6 52.0

151 76.6 64.3 96.5



#12

1,1-Dichloroethene

Concen: 41.464 ug/L

RT: 2.13 min Scan# 324

Delta R.T. -0.00 min

Lab File: VV018682.D

Acq: 05 Oct 2020 18:45

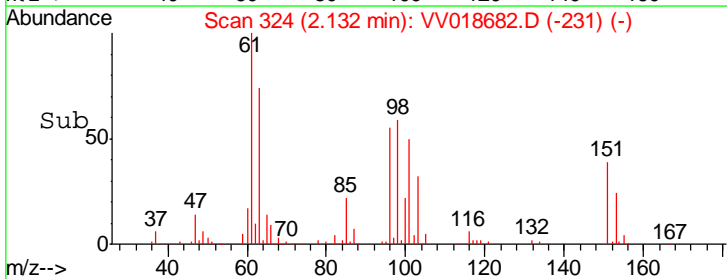
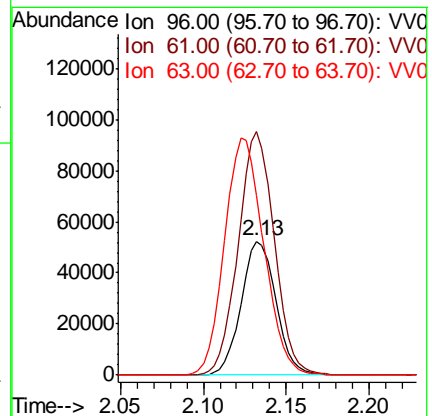
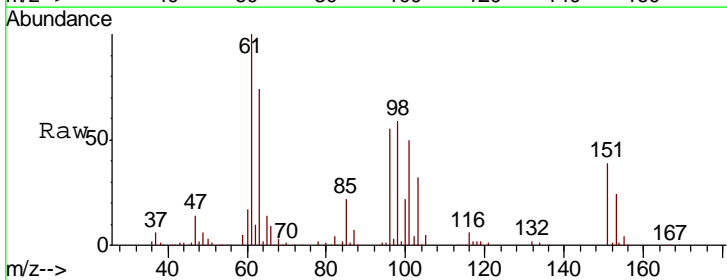
Tgt Ion: 96 Resp: 76894

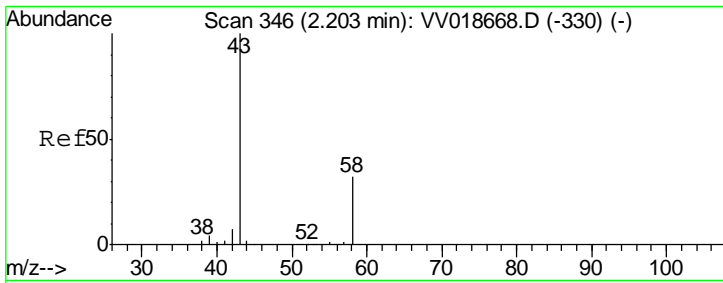
Ion Ratio Lower Upper

96 100

61 181.5 122.8 228.1

63 134.3 91.9 170.7

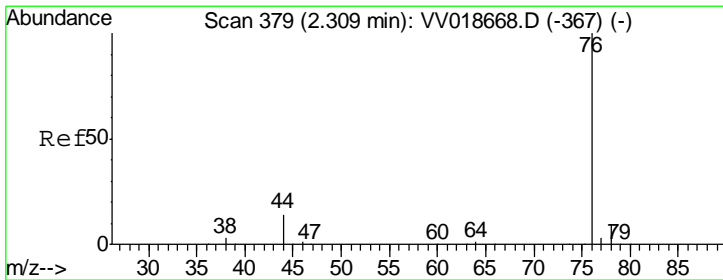
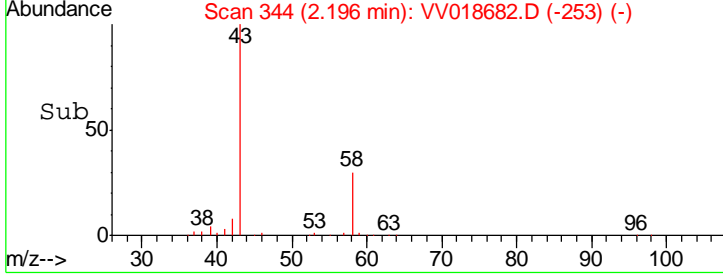
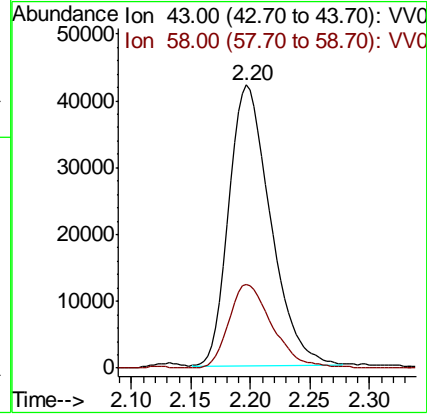
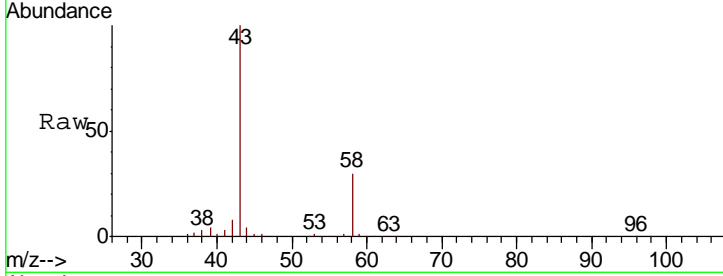




#13
 Acetone
 Concen: 90.969 ug/L
 RT: 2.20 min Scan# 344
 Delta R.T. -0.01 min
 Lab File: VV018682.D
 Acq: 05 Oct 2020 18:45

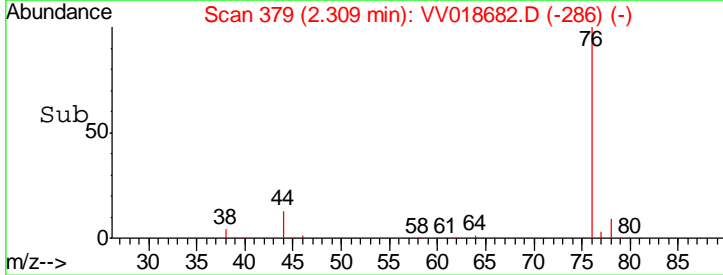
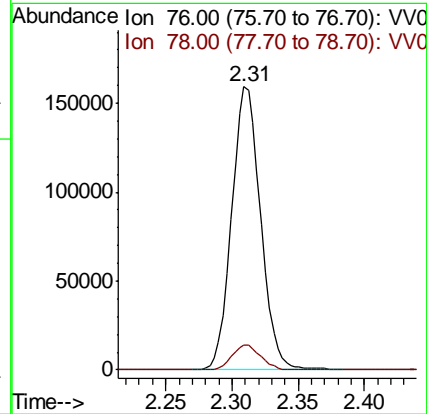
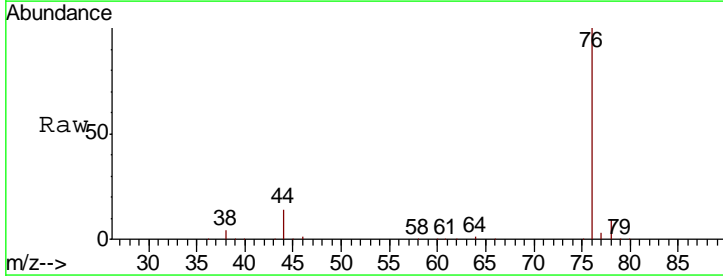
Instrument :
 MSVOA_V
 ClientSampled :

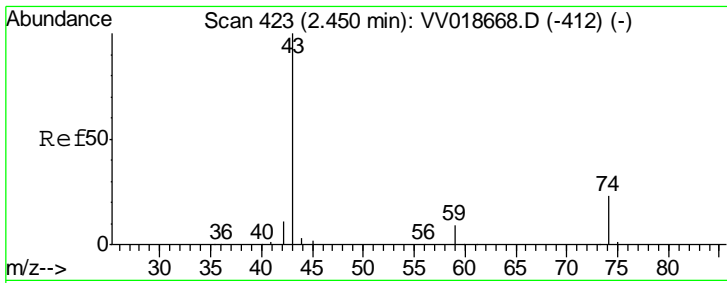
Tgt Ion	Resp	Lower	Upper
43	102139		
58	30.7	0.0	64.0



#14
 Carbon disulfide
 Concen: 40.231 ug/L
 RT: 2.31 min Scan# 379
 Delta R.T. -0.00 min
 Lab File: VV018682.D
 Acq: 05 Oct 2020 18:45

Tgt Ion	Resp	Lower	Upper
76	241686		
78	8.7	7.1	10.7

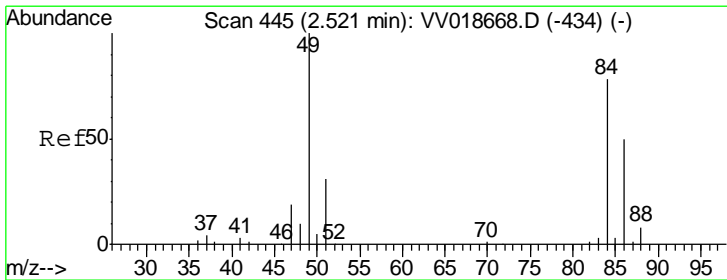
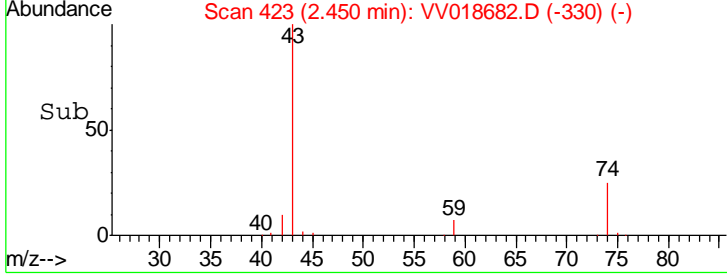
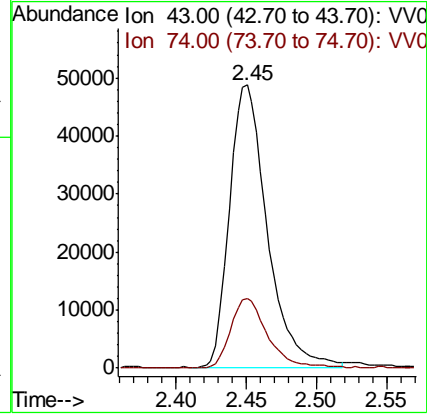
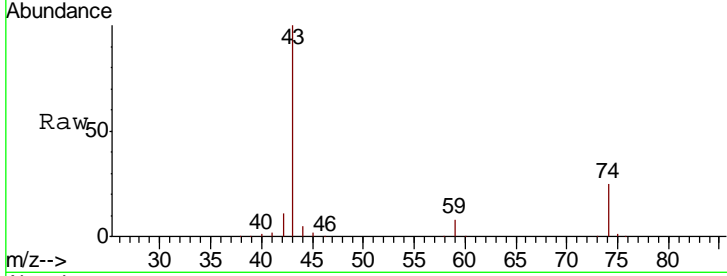




#15
 Methyl Acetate
 Concen: 42.007 ug/L
 RT: 2.45 min Scan# 423
 Delta R.T. -0.00 min
 Lab File: VV018682.D
 Acq: 05 Oct 2020 18:45

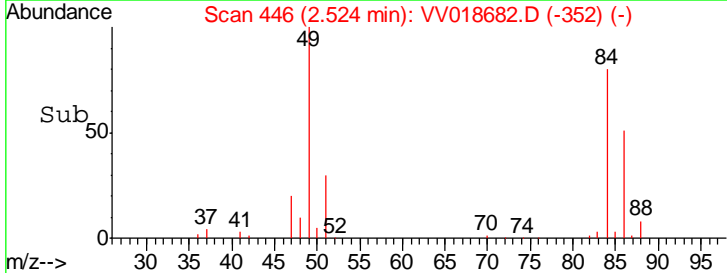
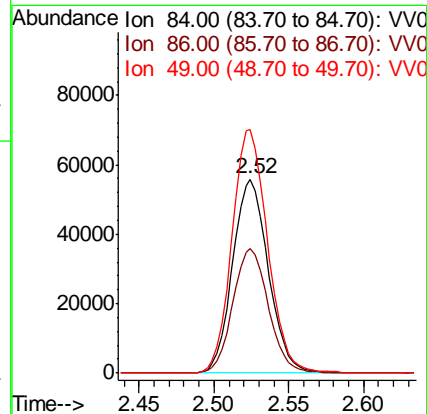
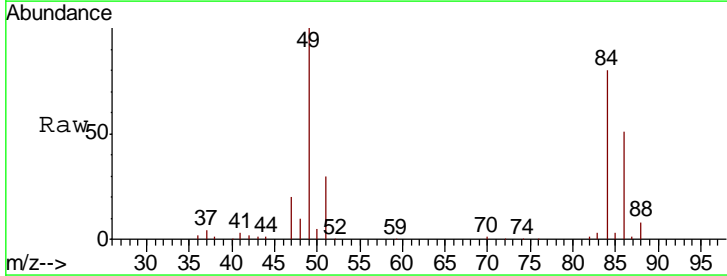
Instrument :
 MSVOA_V
 ClientSampled :

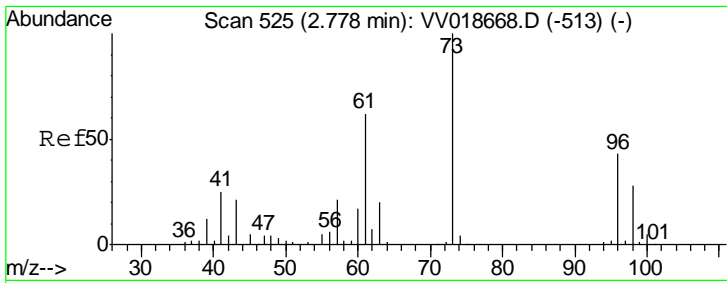
Tgt Ion	Resp	Lower	Upper
43	100		
74	24.3	19.2	28.8



#16
 Methylene chloride
 Concen: 41.758 ug/L
 RT: 2.52 min Scan# 446
 Delta R.T. 0.00 min
 Lab File: VV018682.D
 Acq: 05 Oct 2020 18:45

Tgt Ion	Resp	Lower	Upper
84	100		
86	64.2	46.2	85.8
49	125.6	86.6	160.8

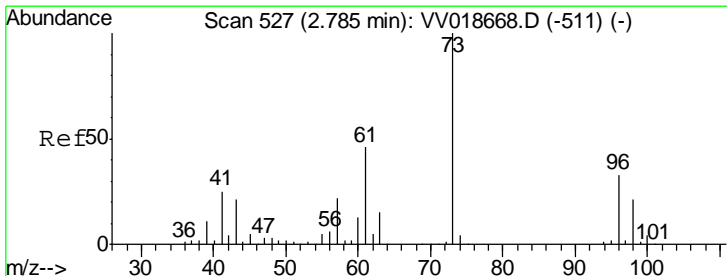
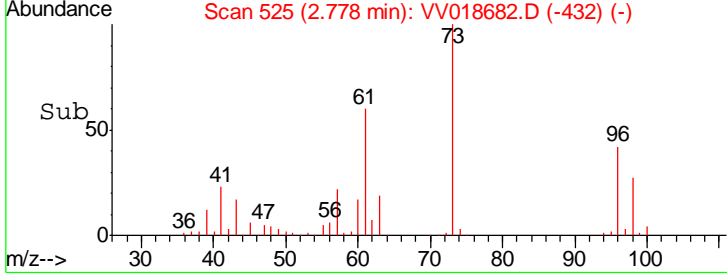
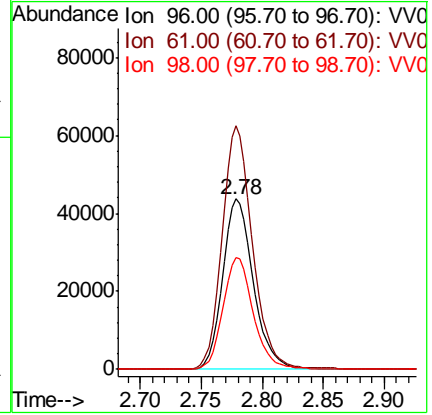
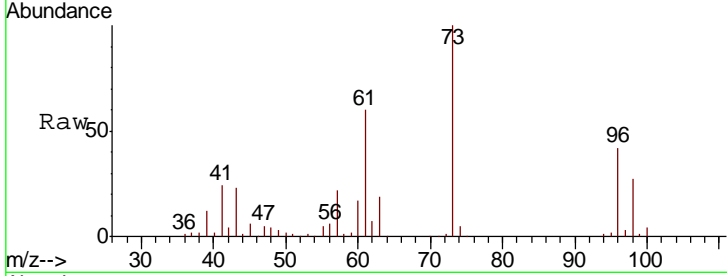




#17
 trans-1,2-Dichloroethene
 Concen: 36.436 ug/L
 RT: 2.78 min Scan# 525
 Delta R.T. -0.00 min
 Lab File: VV018682.D
 Acq: 05 Oct 2020 18:45

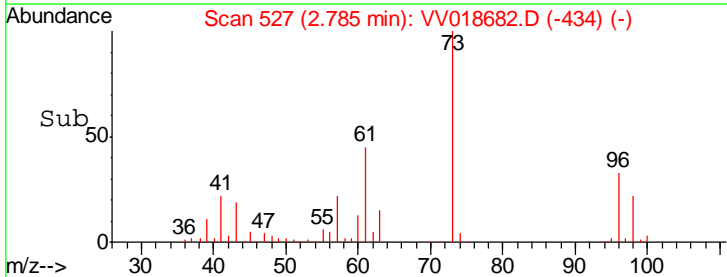
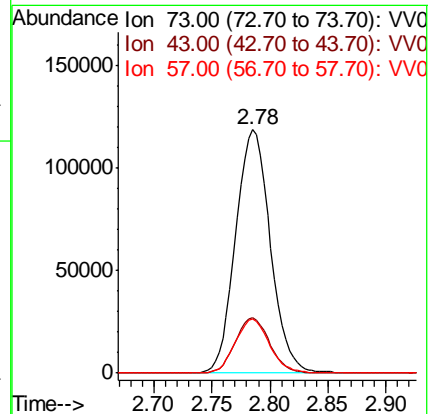
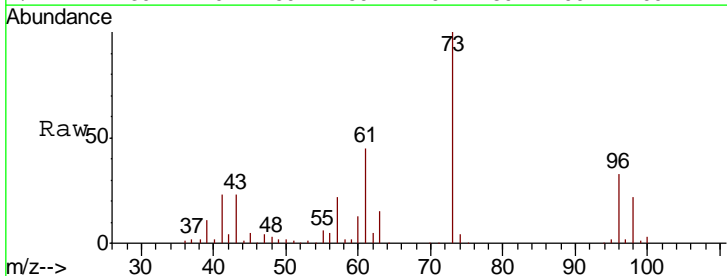
Instrument : MSVOA_V
 ClientSampled :

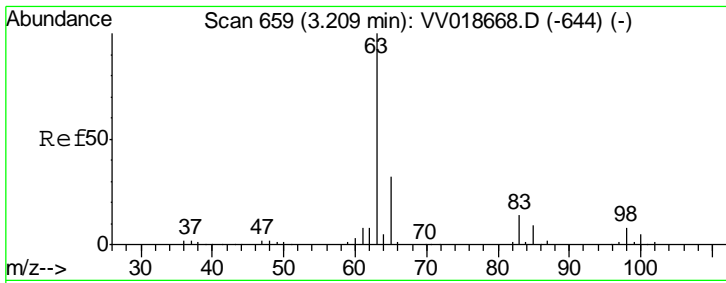
Tgt Ion	Resp	Lower	Upper
96	77318		
61	142.9	95.0	176.4
98	65.6	44.6	82.8



#18
 Methyl tert-butyl Ether
 Concen: 38.119 ug/L
 RT: 2.78 min Scan# 527
 Delta R.T. -0.00 min
 Lab File: VV018682.D
 Acq: 05 Oct 2020 18:45

Tgt Ion	Resp	Lower	Upper
73	246456		
43	22.2	15.9	23.9
57	22.0	17.5	26.3

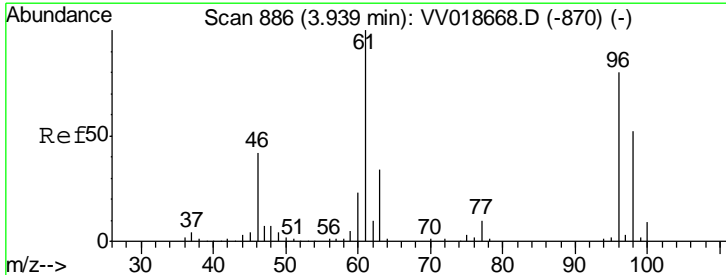
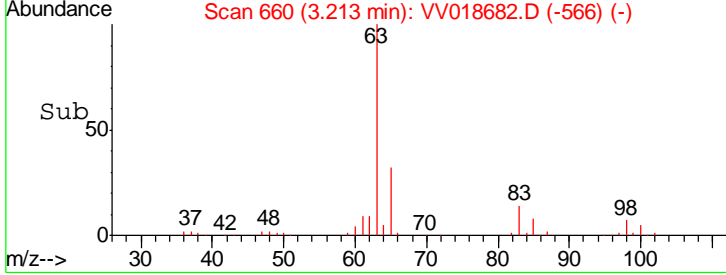
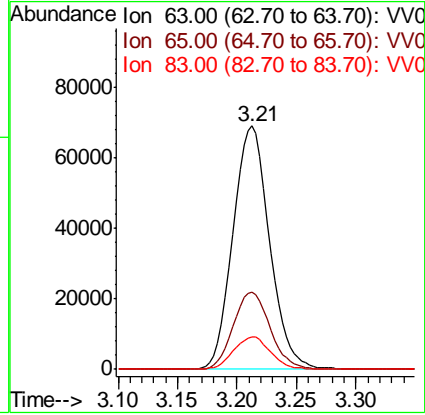
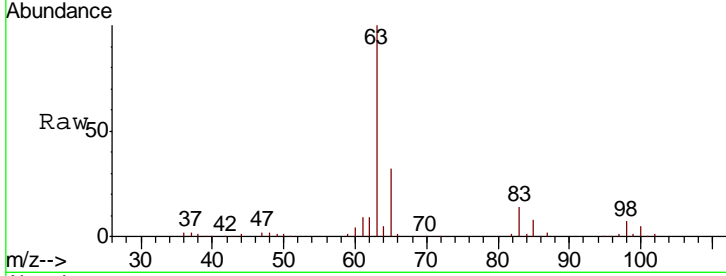




#19
 1,1-Dichloroethane
 Concen: 39.631 ug/L
 RT: 3.21 min Scan# 660
 Delta R.T. 0.00 min
 Lab File: VV018682.D
 Acq: 05 Oct 2020 18:45

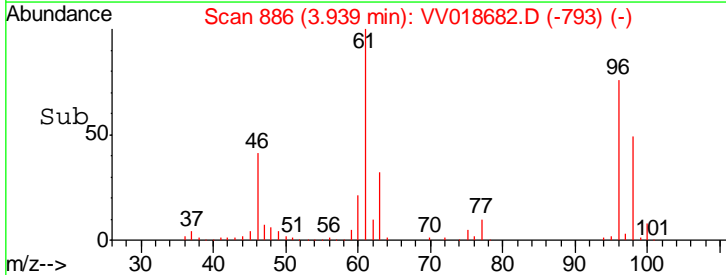
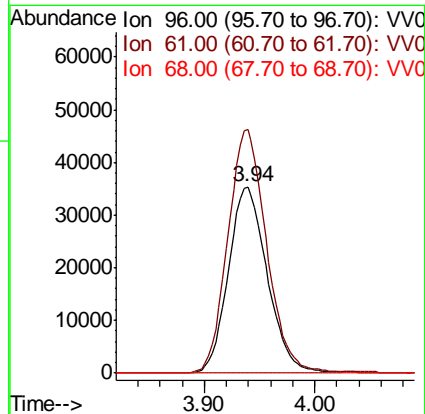
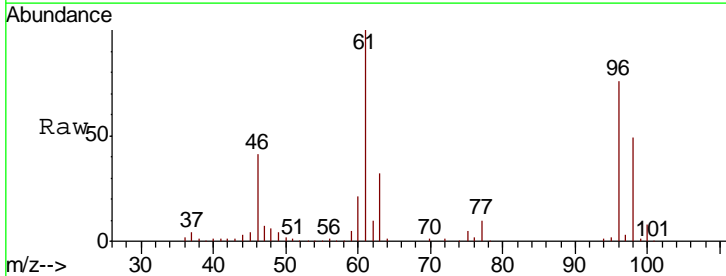
Instrument : MSVOA_V
 ClientSampled :

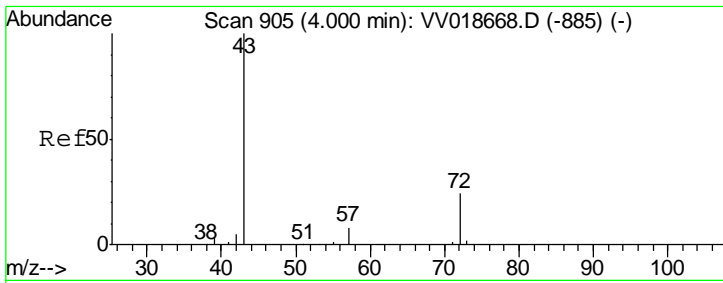
Tgt Ion	Resp	Lower	Upper
63	147246		
65	31.7	22.3	41.3
83	13.6	9.3	17.3



#20
 cis-1,2-Dichloroethene
 Concen: 38.287 ug/L
 RT: 3.94 min Scan# 886
 Delta R.T. -0.00 min
 Lab File: VV018682.D
 Acq: 05 Oct 2020 18:45

Tgt Ion	Resp	Lower	Upper
96	86344		
61	130.8	86.8	161.2
68	0.0	0.0	0.0

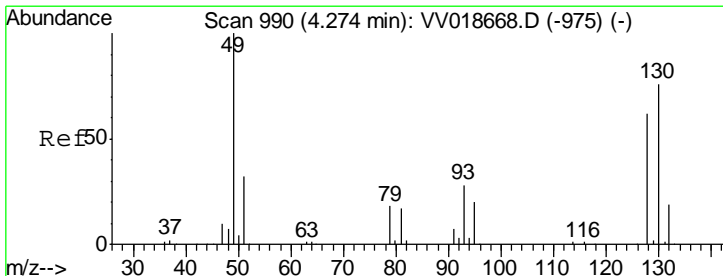
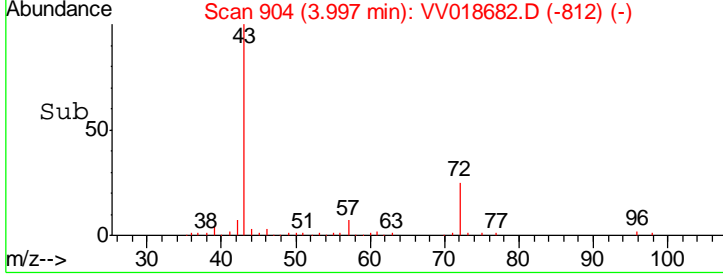
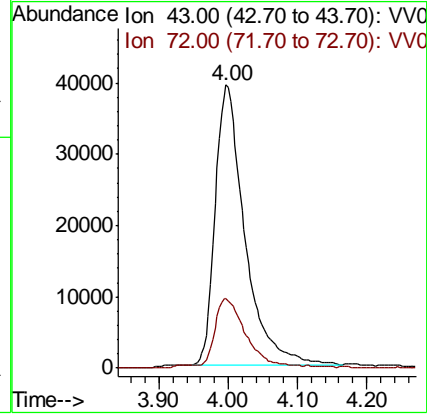
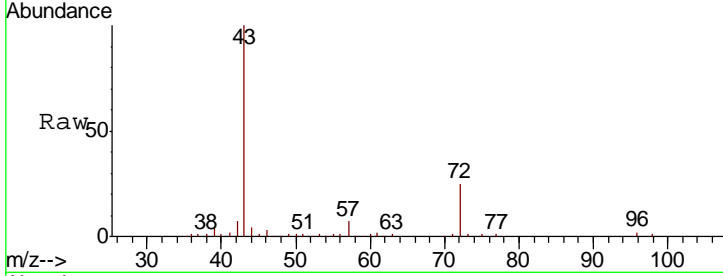




#22
 2-Butanone
 Concen: 81.695 ug/L
 RT: 4.00 min Scan# 904
 Delta R.T. -0.00 min
 Lab File: VV018682.D
 Acq: 05 Oct 2020 18:45

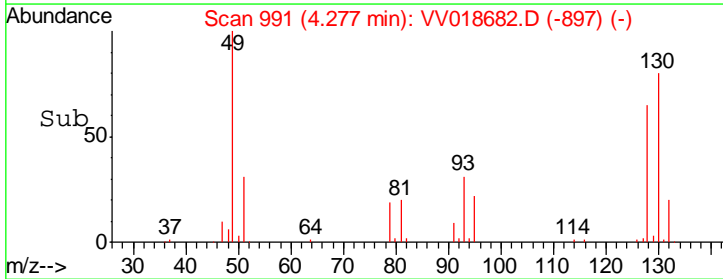
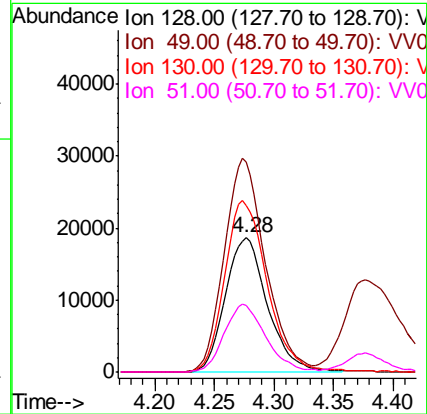
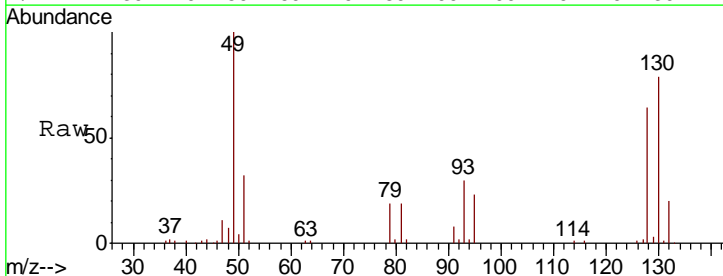
Instrument :
 MSVOA_V
 ClientSampled :

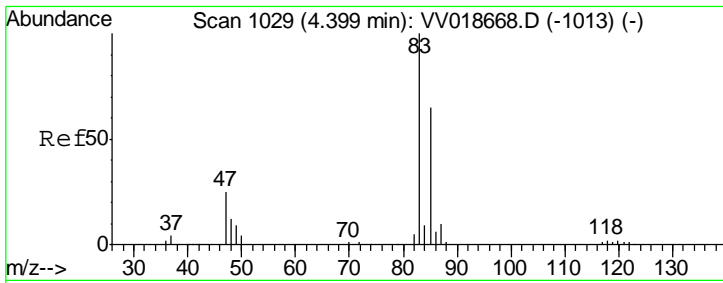
Tgt Ion	Resp	Lower	Upper
43	115874		
72	24.7	12.1	36.3



#23
 Bromochloromethane
 Concen: 36.966 ug/L
 RT: 4.28 min Scan# 991
 Delta R.T. 0.00 min
 Lab File: VV018682.D
 Acq: 05 Oct 2020 18:45

Tgt Ion	Resp	Lower	Upper
128	45842		
49	156.4	105.1	195.1
130	124.2	90.0	167.2
51	49.3	38.6	57.8

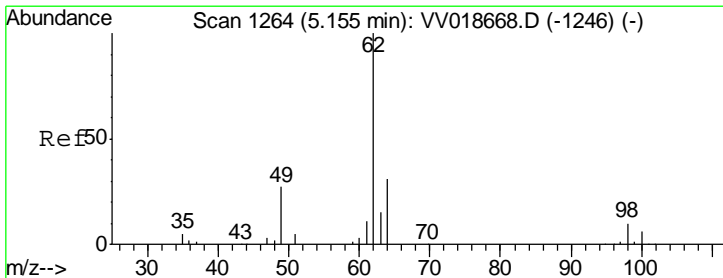
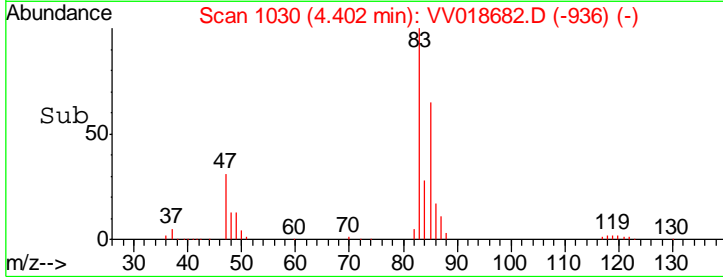
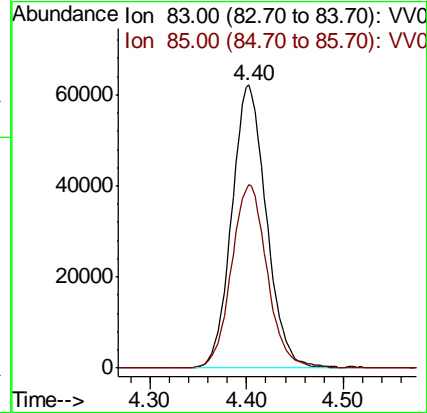
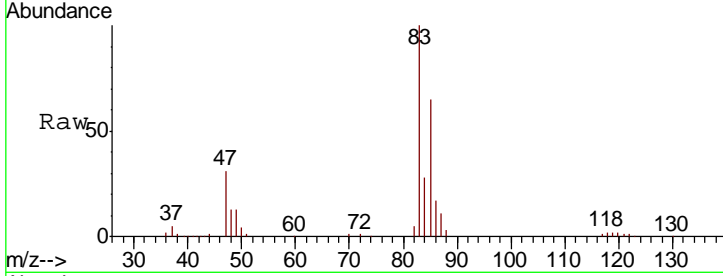




#25
 Chloroform
 Concen: 39.377 ug/L
 RT: 4.40 min Scan# 1030
 Delta R.T. 0.00 min
 Lab File: VV018682.D
 Acq: 05 Oct 2020 18:45

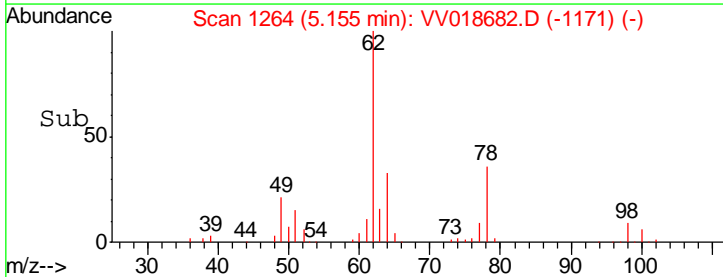
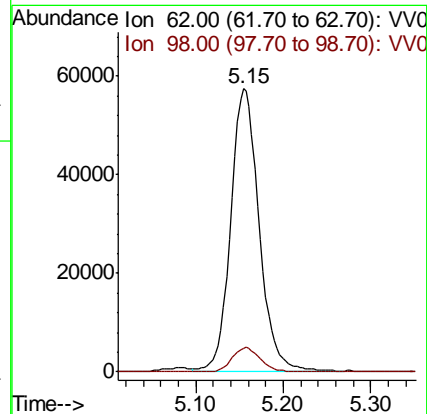
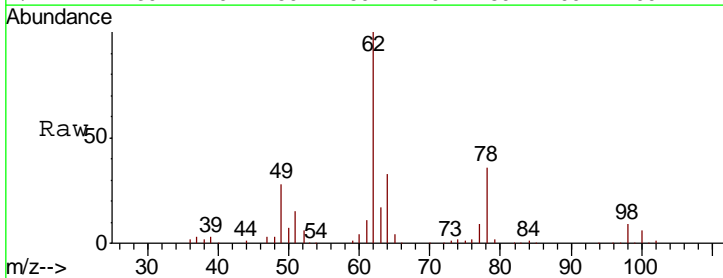
Instrument : MSVOA_V
 ClientSampled :

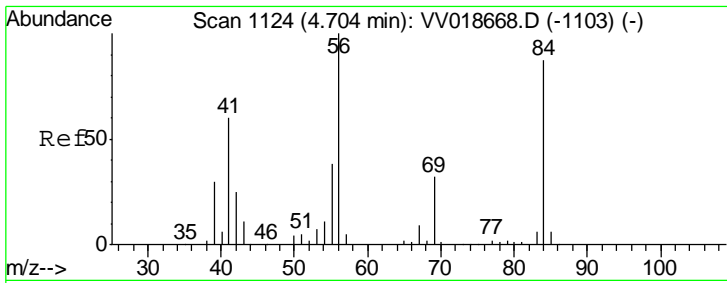
Tgt Ion	Resp	Lower	Upper
83	154484		
85	64.8	46.2	85.8



#27
 1,2-Dichloroethane
 Concen: 41.923 ug/L
 RT: 5.15 min Scan# 1264
 Delta R.T. -0.00 min
 Lab File: VV018682.D
 Acq: 05 Oct 2020 18:45

Tgt Ion	Resp	Lower	Upper
62	128195		
98	8.5	7.7	11.5

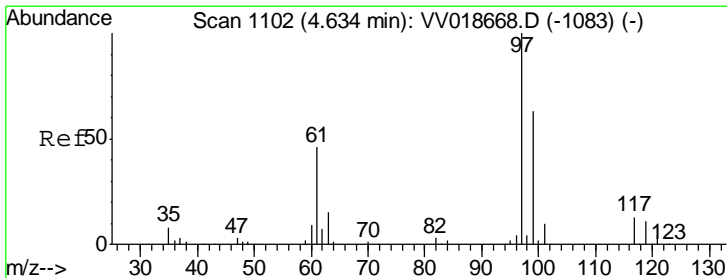
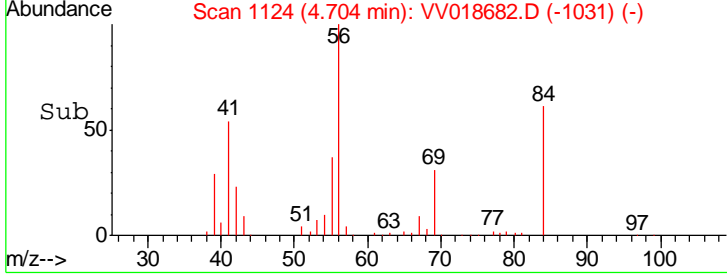
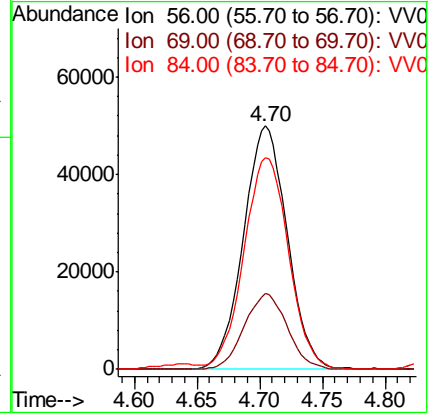
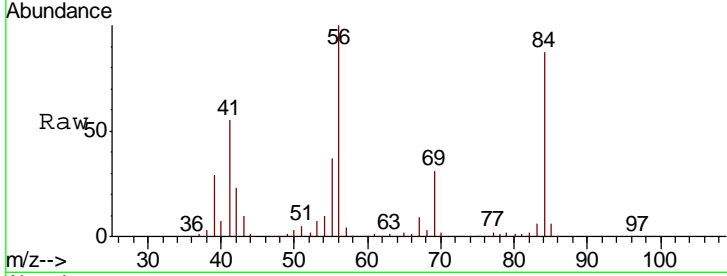




#29
 Cyclohexane
 Concen: 41.363 ug/L
 RT: 4.70 min Scan# 1124
 Delta R.T. -0.00 min
 Lab File: VV018682.D
 Acq: 05 Oct 2020 18:45

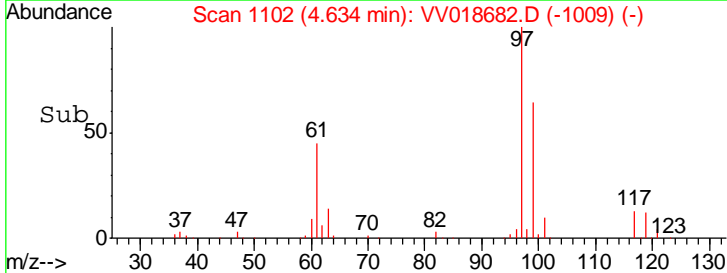
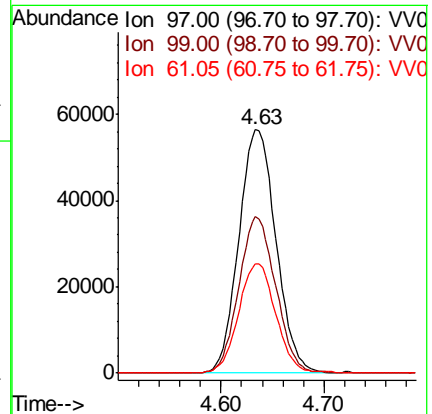
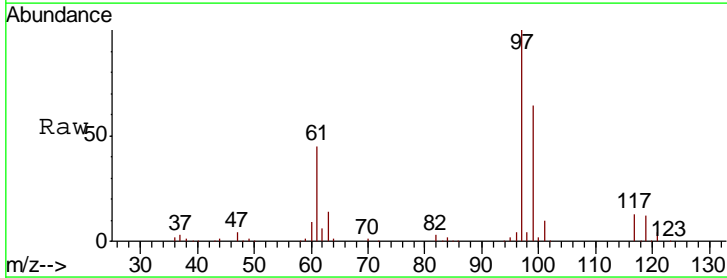
Instrument :
 MSVOA_V
 ClientSampled :

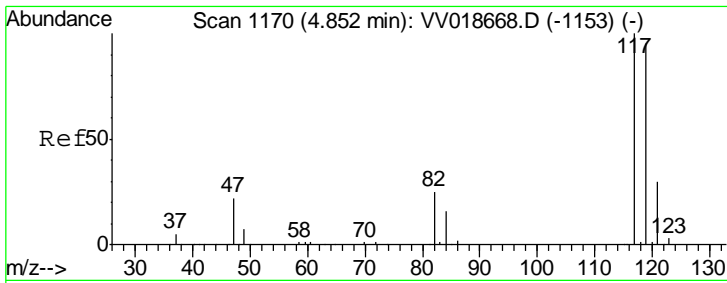
Tgt Ion	Resp	Lower	Upper
56	121526		
69	30.6	24.8	37.2
84	89.0	72.2	108.4



#30
 1,1,1-Trichloroethane
 Concen: 44.294 ug/L
 RT: 4.63 min Scan# 1102
 Delta R.T. -0.00 min
 Lab File: VV018682.D
 Acq: 05 Oct 2020 18:45

Tgt Ion	Resp	Lower	Upper
97	141653		
99	63.7	51.4	77.0
61	44.8	33.9	50.9

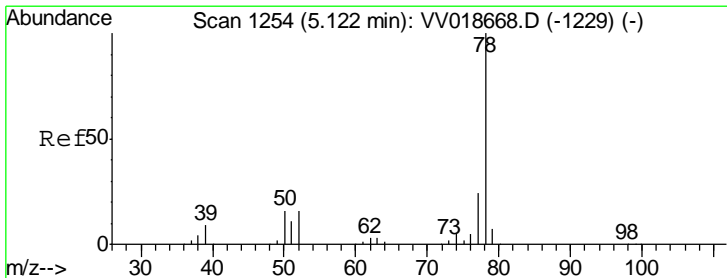
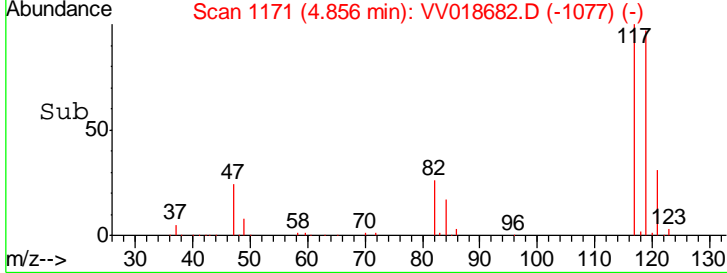
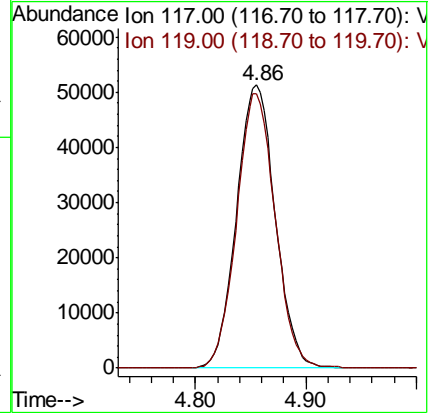
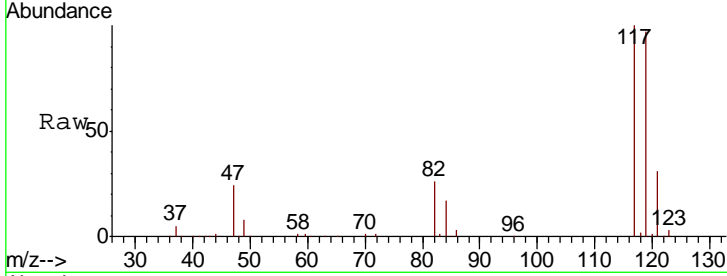




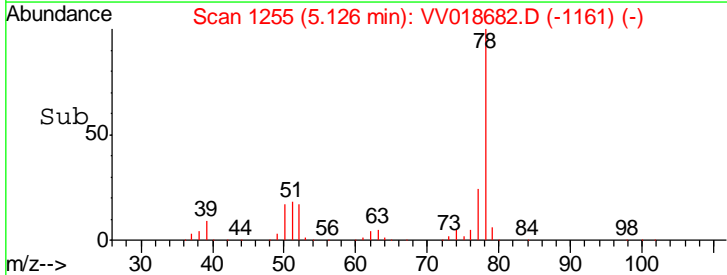
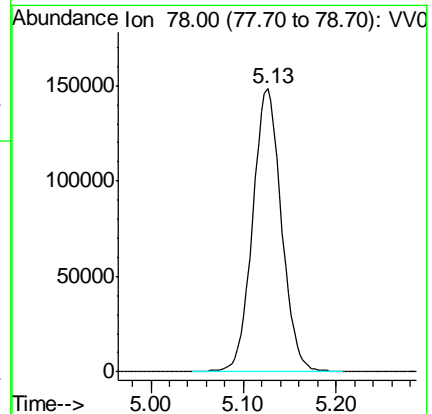
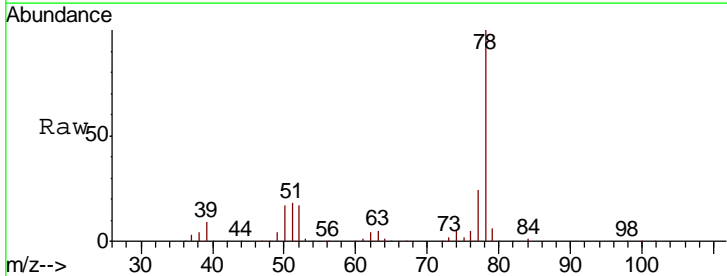
#31
 Carbon tetrachloride
 Concen: 43.430 ug/L
 RT: 4.86 min Scan# 1171
 Delta R.T. 0.00 min
 Lab File: VV018682.D
 Acq: 05 Oct 2020 18:45

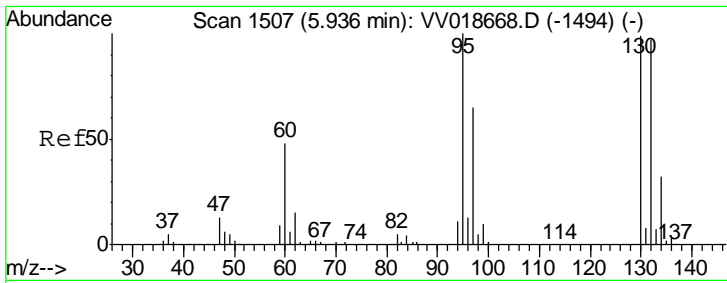
Instrument : MSVOA_V
 ClientSampled :

Tgt Ion: 117 Resp: 124651
 Ion Ratio Lower Upper
 117 100
 119 96.5 77.0 115.6



#33
 Benzene
 Concen: 42.403 ug/L
 RT: 5.13 min Scan# 1255
 Delta R.T. 0.00 min
 Lab File: VV018682.D
 Acq: 05 Oct 2020 18:45
 Tgt Ion: 78 Resp: 320904

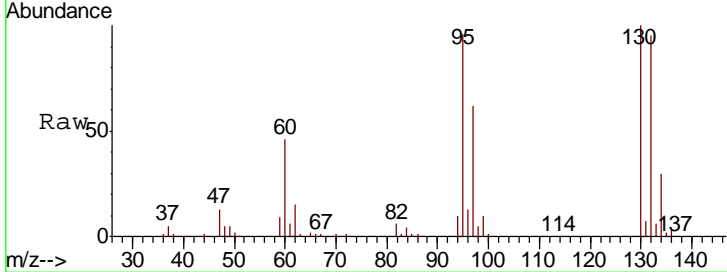




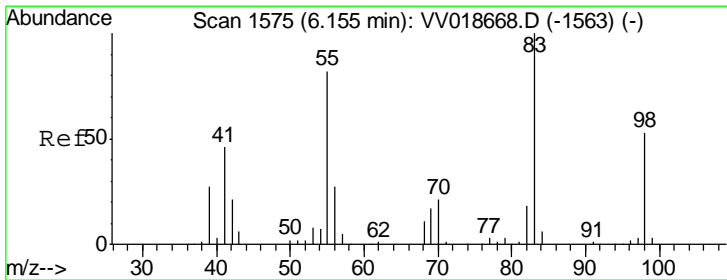
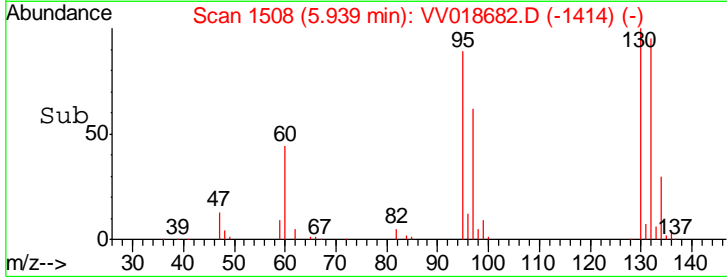
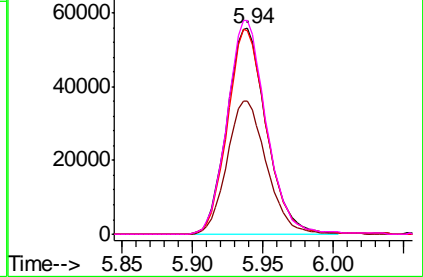
#34
 Trichloroethene
 Concen: 49.812 ug/L
 RT: 5.94 min Scan# 1508
 Delta R.T. 0.00 min
 Lab File: VV018682.D
 Acq: 05 Oct 2020 18:45

Instrument :
 MSVOA_V
 ClientSampled :

Tgt Ion	Resp	Lower	Upper
95	109442		
97	64.6	45.9	85.3
132	99.0	70.8	131.4
130	103.9	75.3	139.8

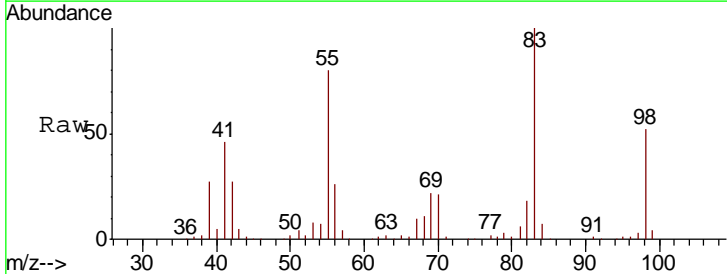


Abundance Ion 95.00 (94.70 to 95.70): VV0
 Ion 97.00 (96.70 to 97.70): VV0
 Ion 132.00 (131.70 to 132.70): VV0
 Ion 130.00 (129.70 to 130.70): VV0

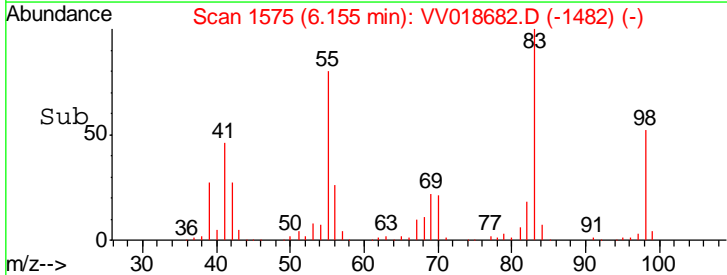
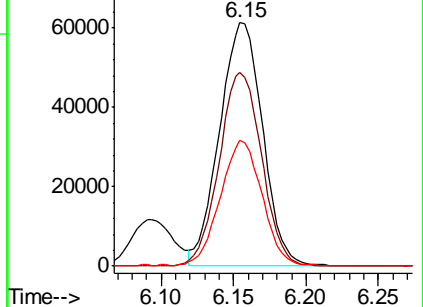


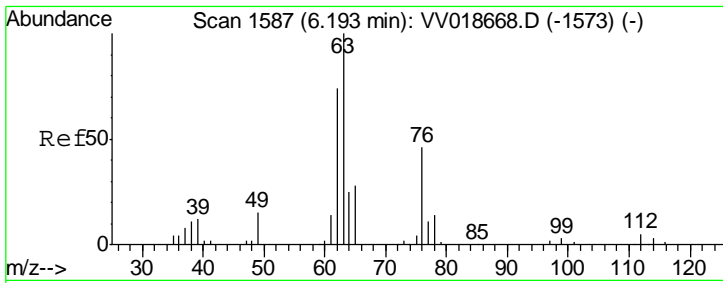
#35
 Methylcyclohexane
 Concen: 42.599 ug/L
 RT: 6.15 min Scan# 1575
 Delta R.T. -0.00 min
 Lab File: VV018682.D
 Acq: 05 Oct 2020 18:45

Tgt Ion	Resp	Lower	Upper
83	126260		
55	78.7	60.1	90.1
98	50.2	40.2	60.4



Abundance Ion 83.00 (82.70 to 83.70): VV0
 Ion 55.00 (54.70 to 55.70): VV0
 Ion 98.00 (97.70 to 98.70): VV0

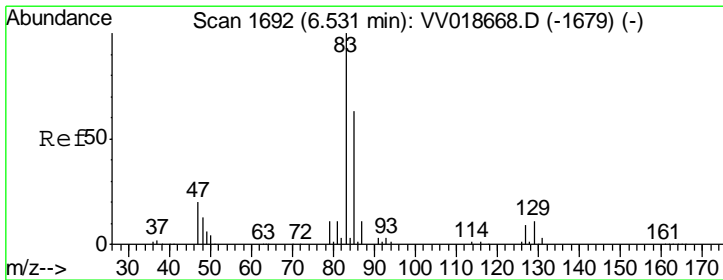
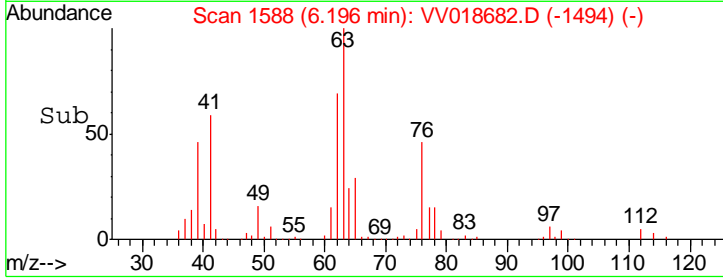
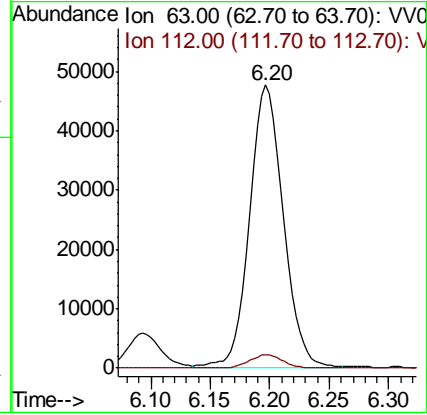
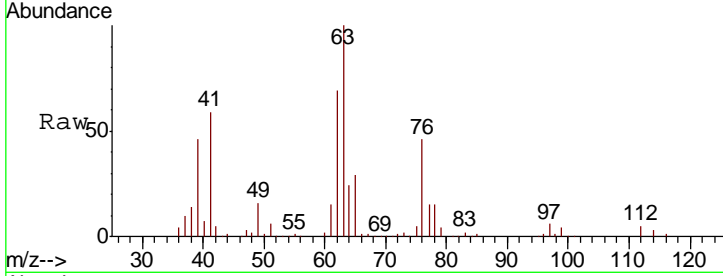




#37
 1,2-Dichloropropane
 Concen: 48.545 ug/L
 RT: 6.20 min Scan# 1588
 Delta R.T. 0.00 min
 Lab File: VV018682.D
 Acq: 05 Oct 2020 18:45

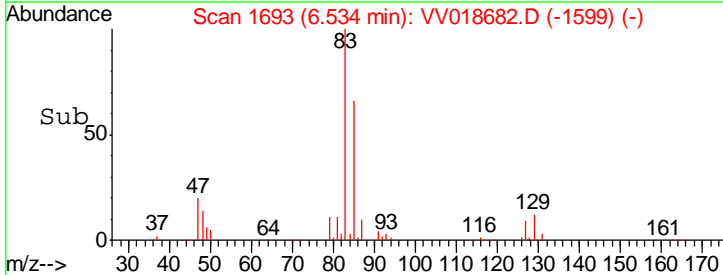
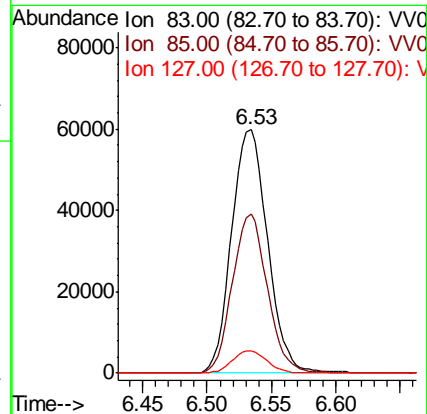
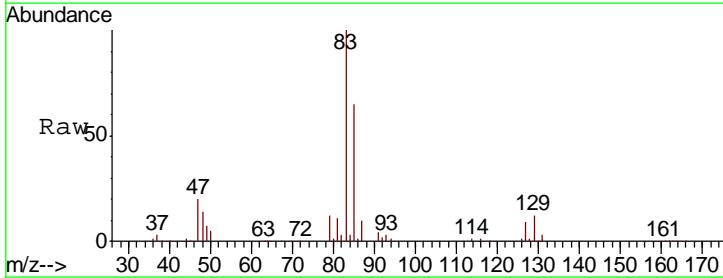
Instrument :
 MSVOA_V
 ClientSampled :

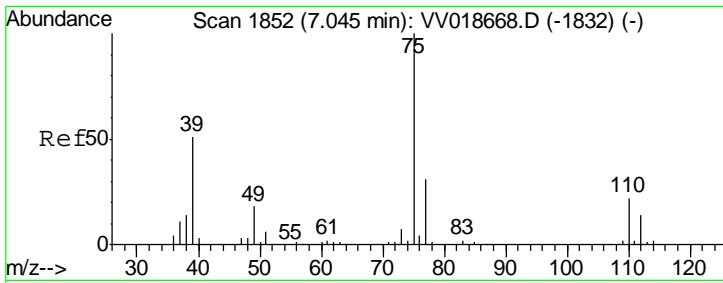
Tgt Ion	Resp	Lower	Upper
63	100		
112	4.5	3.9	5.9



#38
 Bromodichloromethane
 Concen: 44.755 ug/L
 RT: 6.53 min Scan# 1693
 Delta R.T. 0.00 min
 Lab File: VV018682.D
 Acq: 05 Oct 2020 18:45

Tgt Ion	Resp	Lower	Upper
83	100		
85	65.5	44.5	82.7
127	9.1	7.2	10.8

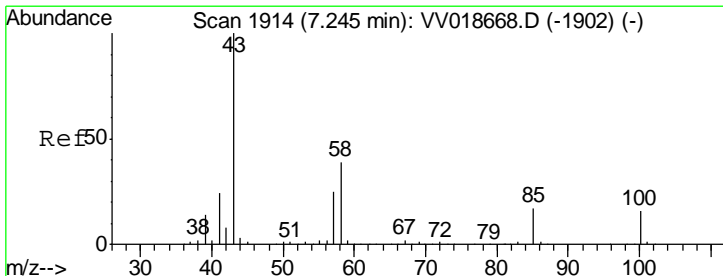
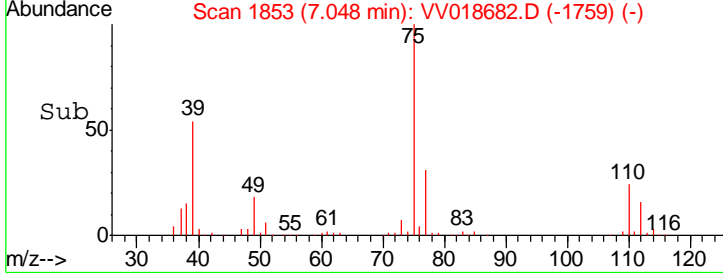
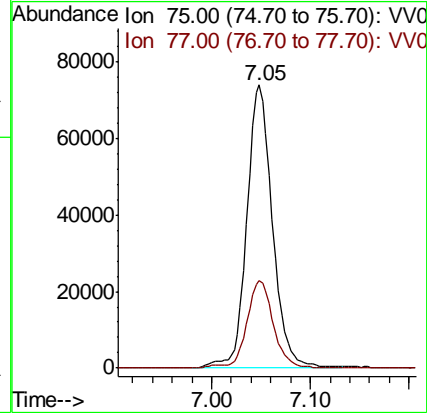
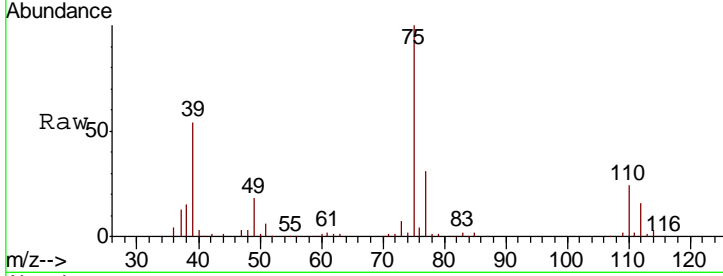




#39
 cis-1,3-Dichloropropene
 Concen: 43.629 ug/L
 RT: 7.05 min Scan# 1853
 Delta R.T. 0.00 min
 Lab File: VV018682.D
 Acq: 05 Oct 2020 18:45

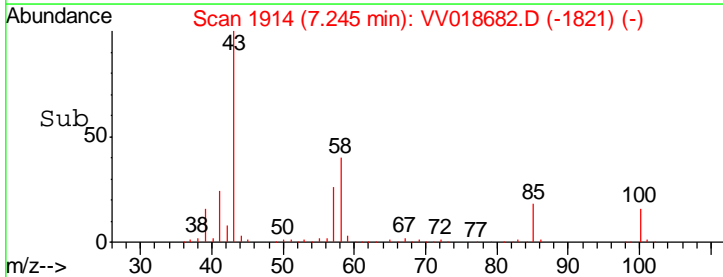
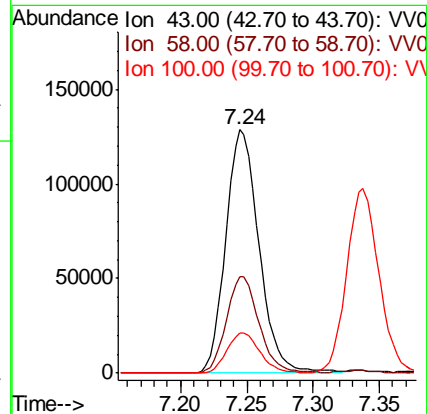
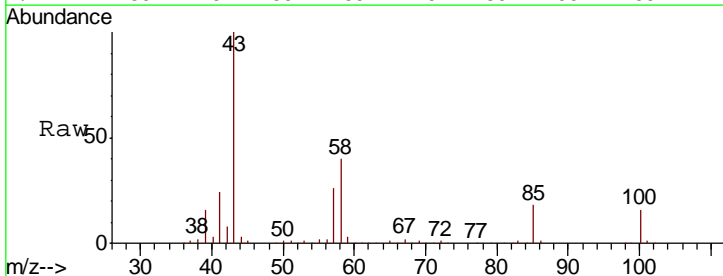
Instrument : MSVOA_V
 ClientSampled :

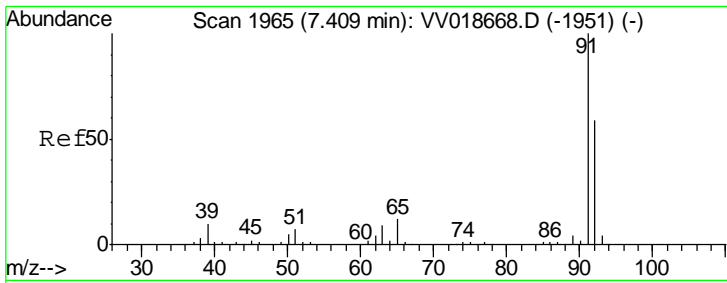
Tgt Ion	Resp	Lower	Upper
75	100		
77	30.8	23.0	42.6



#40
 4-Methyl-2-pentanone
 Concen: 89.736 ug/L
 RT: 7.24 min Scan# 1914
 Delta R.T. -0.00 min
 Lab File: VV018682.D
 Acq: 05 Oct 2020 18:45

Tgt Ion	Resp	Lower	Upper
43	100		
58	38.8	31.8	47.6
100	16.4	13.4	20.0

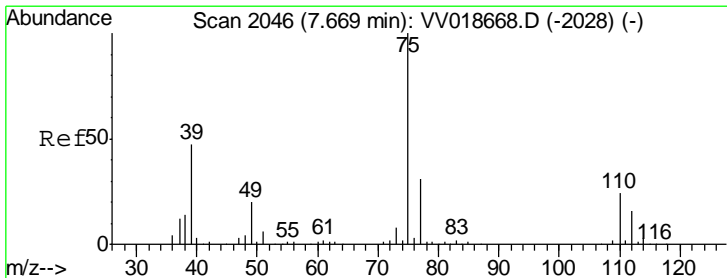
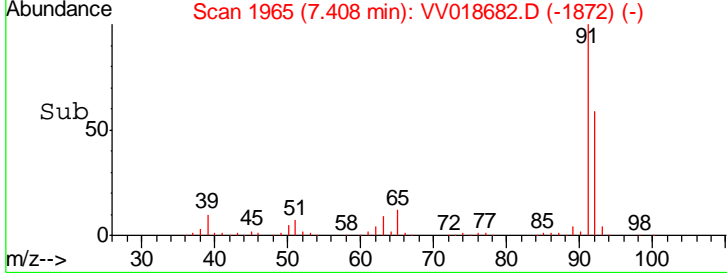
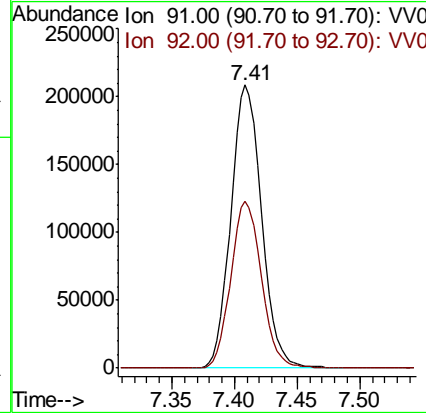
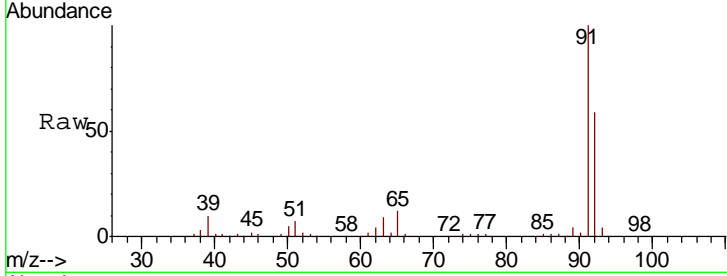




#42
 Toluene
 Concen: 43.268 ug/L
 RT: 7.41 min Scan# 1965
 Delta R.T. -0.00 min
 Lab File: VV018682.D
 Acq: 05 Oct 2020 18:45

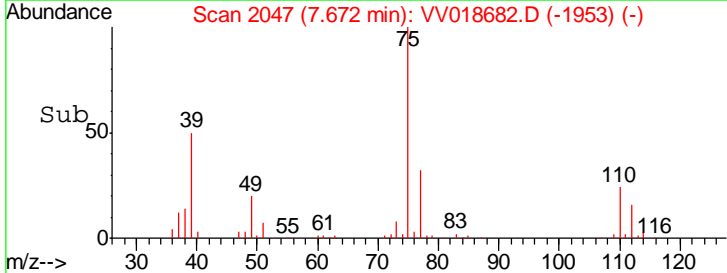
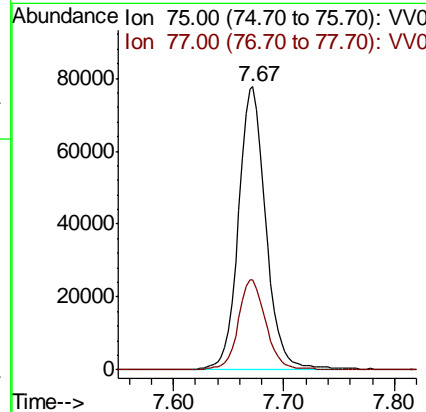
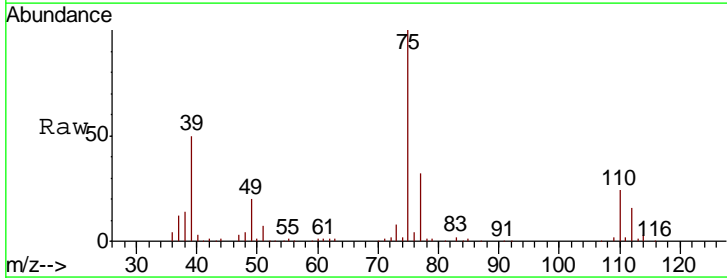
Instrument :
 MSVOA_V
 ClientSampled :

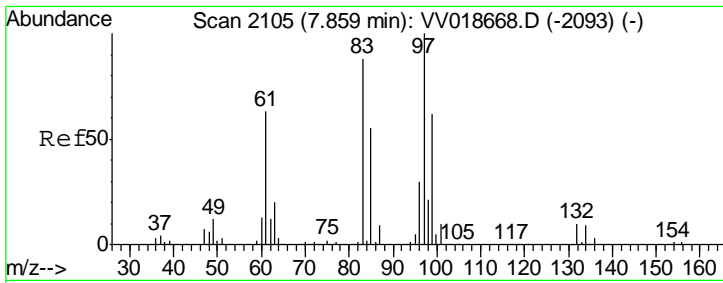
Tgt Ion	Resp	Lower	Upper
91	100		
92	59.0	41.6	77.3



#44
 trans-1,3-Dichloropropene
 Concen: 44.731 ug/L
 RT: 7.67 min Scan# 2047
 Delta R.T. 0.00 min
 Lab File: VV018682.D
 Acq: 05 Oct 2020 18:45

Tgt Ion	Resp	Lower	Upper
75	100		
77	31.6	22.7	42.1

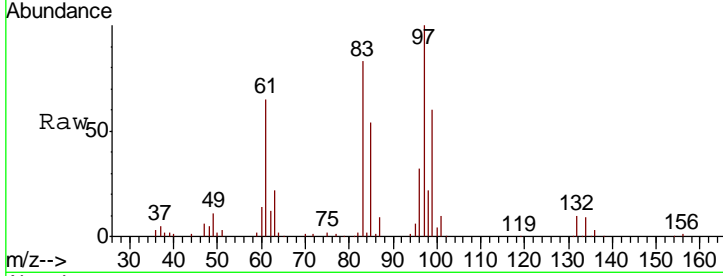




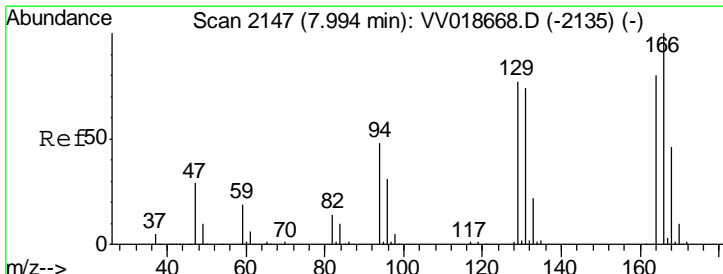
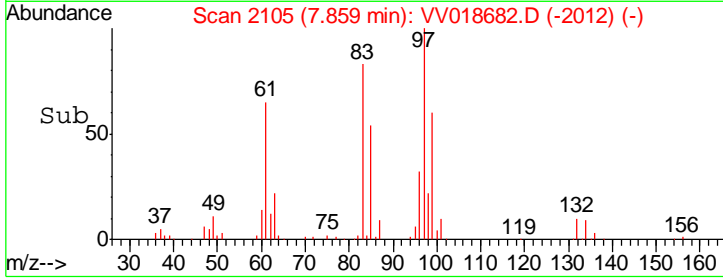
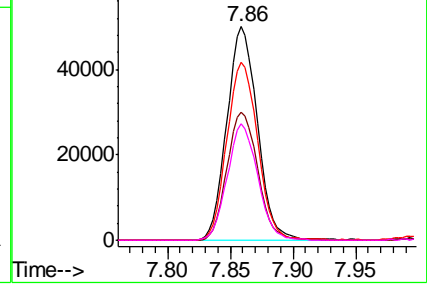
#45
 1,1,2-Trichloroethane
 Concen: 44.057 ug/L
 RT: 7.86 min Scan# 2105
 Delta R.T. -0.00 min
 Lab File: VV018682.D
 Acq: 05 Oct 2020 18:45

Instrument :
 MSVOA_V
 ClientSampled :

Tgt Ion	Resp	Lower	Upper
97	100		
99	59.9	43.3	80.3
83	83.4	60.5	112.5
85	54.3	38.3	71.1

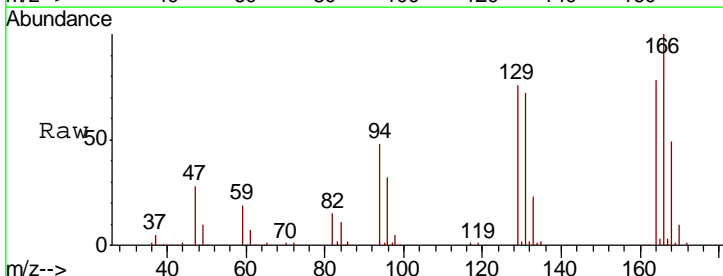


Abundance Ion 97.00 (96.70 to 97.70): VV018682.D (-2093) (-)
 Ion 99.00 (98.70 to 99.70): VV018682.D (-2093) (-)
 Ion 83.00 (82.70 to 83.70): VV018682.D (-2093) (-)
 Ion 85.00 (84.70 to 85.70): VV018682.D (-2093) (-)

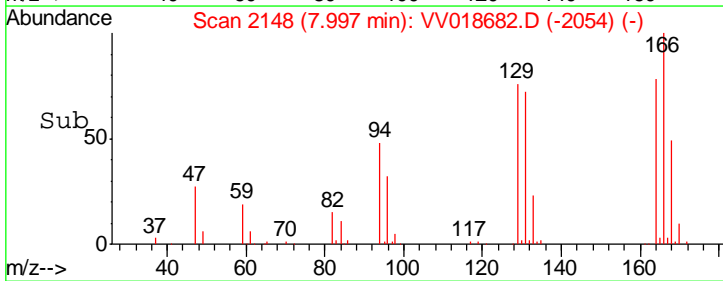
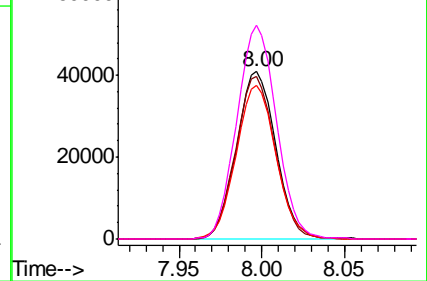


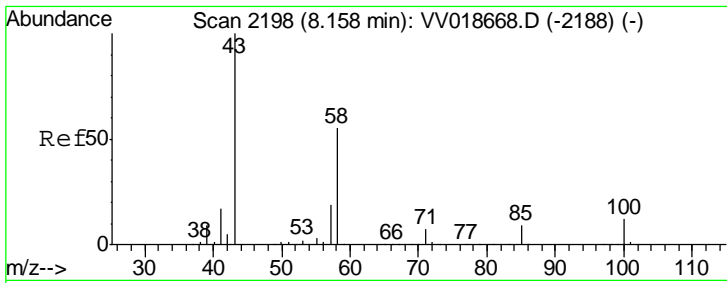
#46
 Tetrachloroethene
 Concen: 37.985 ug/L
 RT: 8.00 min Scan# 2148
 Delta R.T. 0.00 min
 Lab File: VV018682.D
 Acq: 05 Oct 2020 18:45

Tgt Ion	Resp	Lower	Upper
164	100		
129	97.4	62.8	116.6
131	92.1	60.8	112.8
166	127.7	88.9	165.1



Abundance Ion 164.00 (163.70 to 164.70): VV018682.D (-2135) (-)
 Ion 129.00 (128.70 to 129.70): VV018682.D (-2135) (-)
 Ion 131.00 (130.70 to 131.70): VV018682.D (-2135) (-)
 Ion 166.00 (165.70 to 166.70): VV018682.D (-2135) (-)

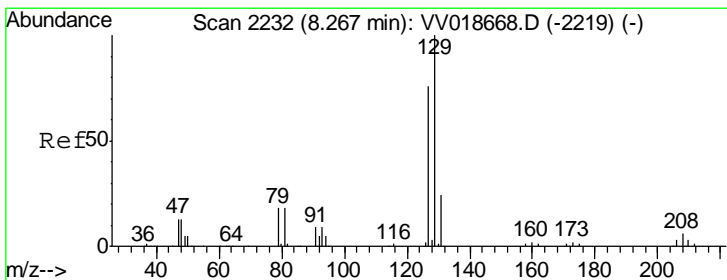
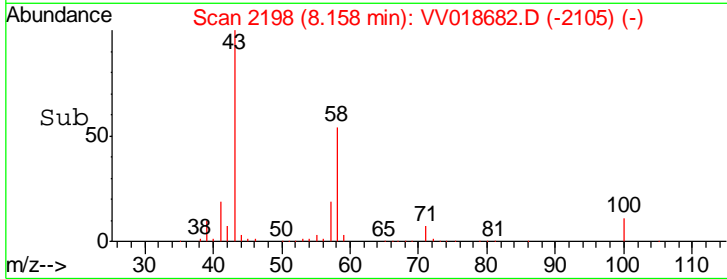
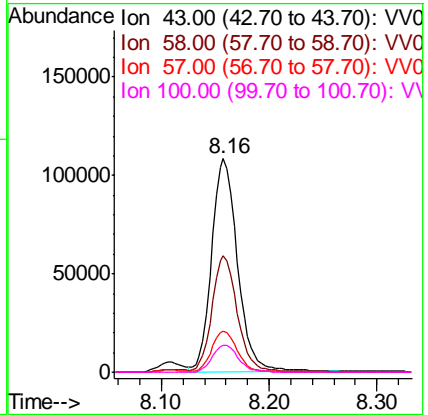
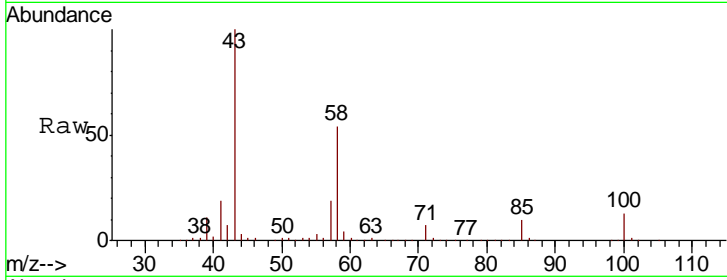




#48
 2-Hexanone
 Concen: 92.572 ug/L
 RT: 8.16 min Scan# 2198
 Delta R.T. -0.00 min
 Lab File: VV018682.D
 Acq: 05 Oct 2020 18:45

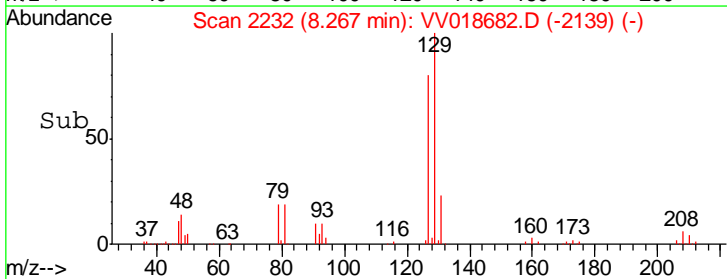
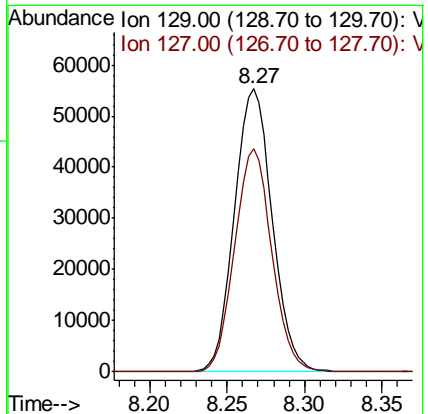
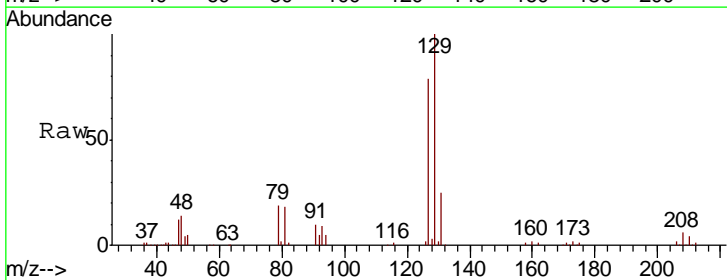
Instrument :
 MSVOA_V
 ClientSampled :

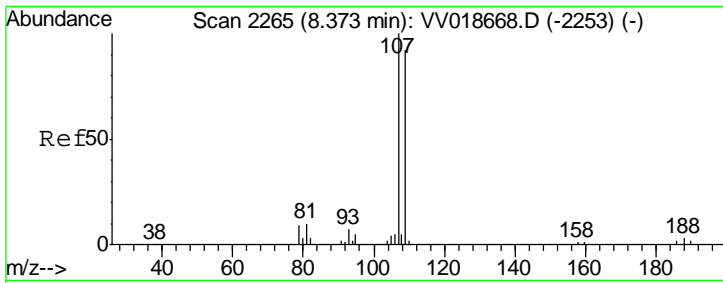
Tgt Ion	Resp	Lower	Upper
43	180965		
58	52.6	45.1	67.7
57	18.6	15.7	23.5
100	12.8	11.0	16.4



#49
 Dibromochloromethane
 Concen: 42.844 ug/L
 RT: 8.27 min Scan# 2232
 Delta R.T. -0.00 min
 Lab File: VV018682.D
 Acq: 05 Oct 2020 18:45

Tgt Ion	Resp	Lower	Upper
129	94191		
127	79.0	54.1	100.5

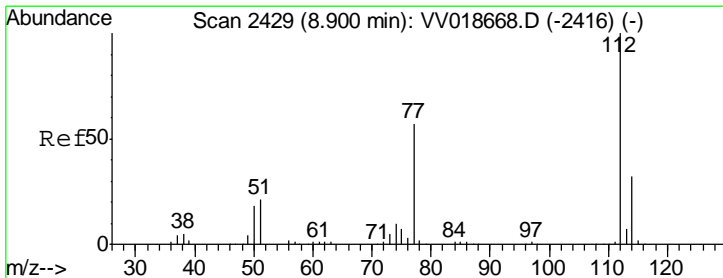
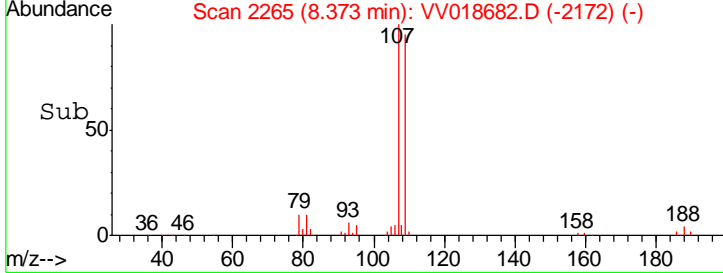
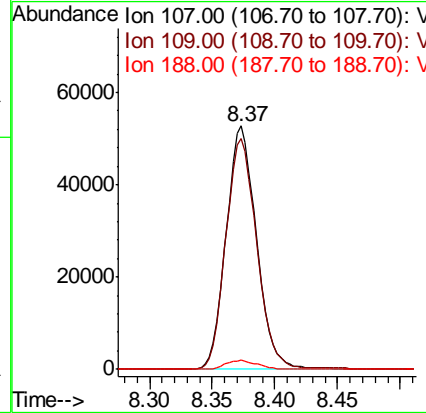
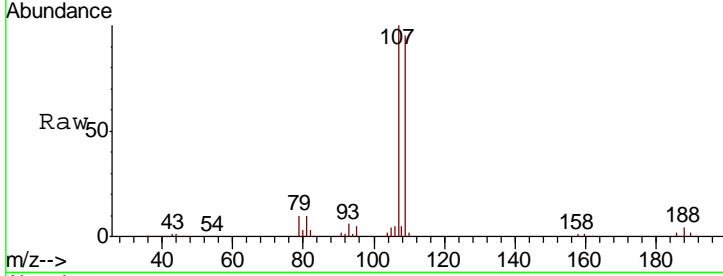




#50
 1,2-Dibromoethane
 Concen: 43.310 ug/L
 RT: 8.37 min Scan# 2265
 Delta R.T. -0.00 min
 Lab File: VV018682.D
 Acq: 05 Oct 2020 18:45

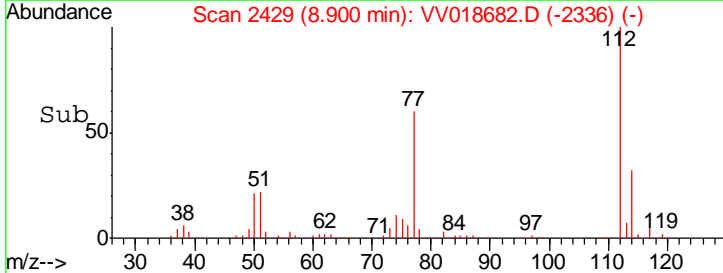
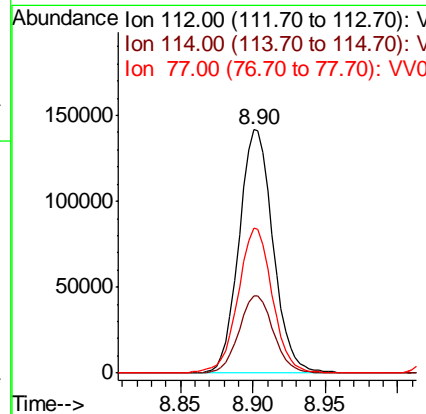
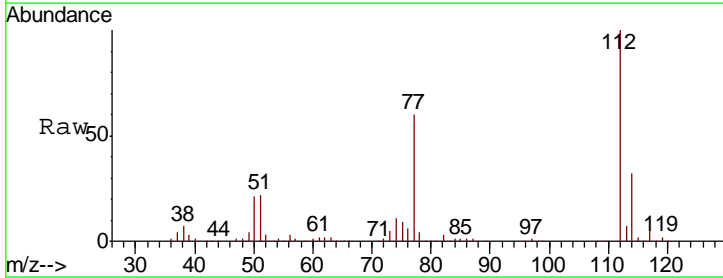
Instrument :
 MSVOA_V
 ClientSampled :

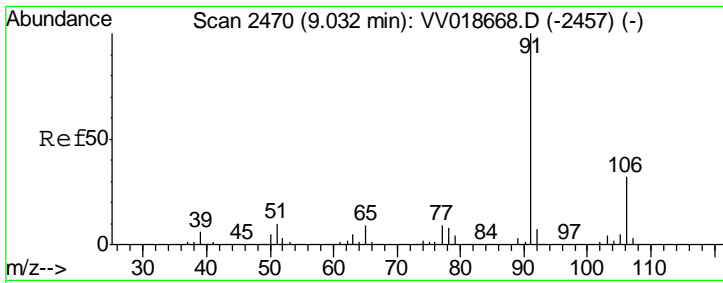
Tgt Ion	Resp	Lower	Upper
107	100		
109	94.9	65.1	120.9
188	3.6	3.7	5.5#



#51
 Chlorobenzene
 Concen: 41.784 ug/L
 RT: 8.90 min Scan# 2429
 Delta R.T. -0.00 min
 Lab File: VV018682.D
 Acq: 05 Oct 2020 18:45

Tgt Ion	Resp	Lower	Upper
112	100		
114	31.8	22.4	41.6
77	59.7	44.8	67.2

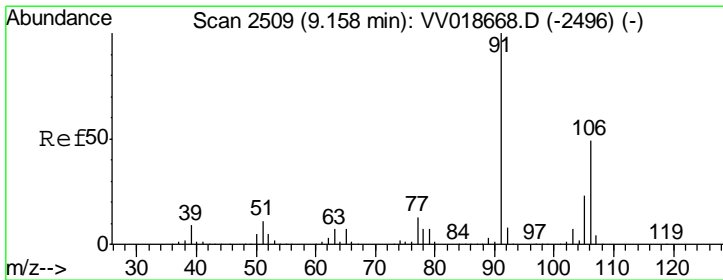
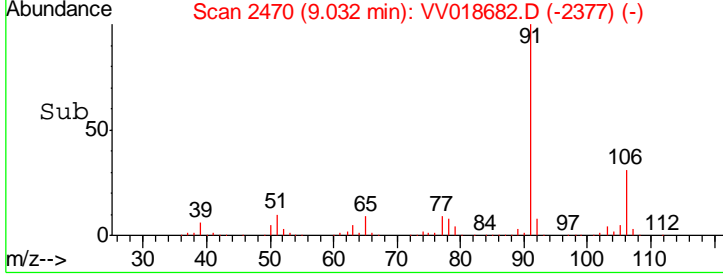
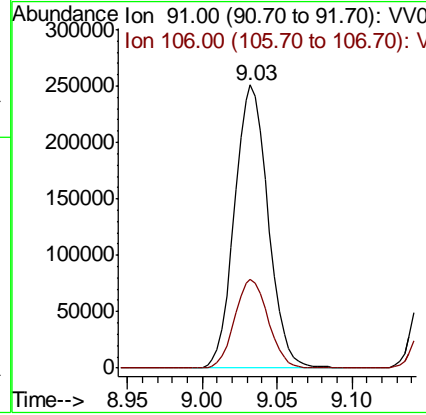
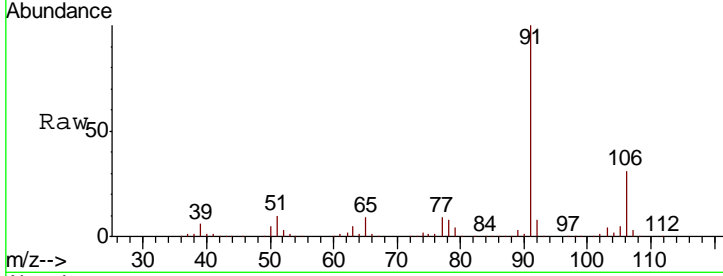




#52
Ethylbenzene
Concen: 42.895 ug/L
RT: 9.03 min Scan# 2470
Delta R.T. -0.00 min
Lab File: VV018682.D
Acq: 05 Oct 2020 18:45

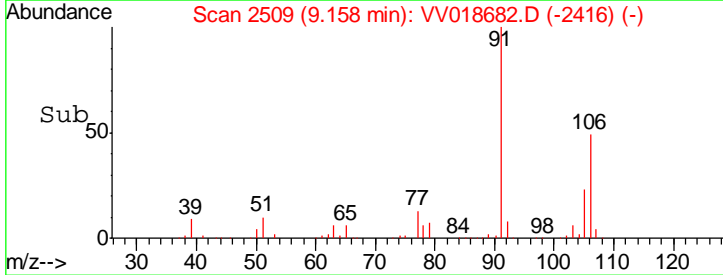
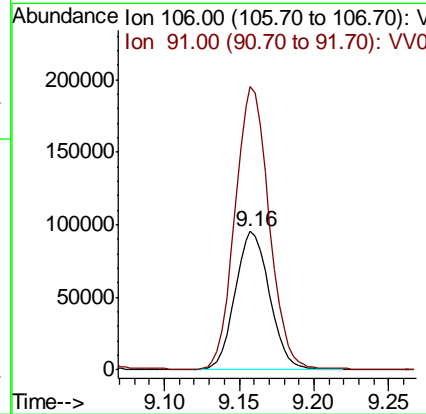
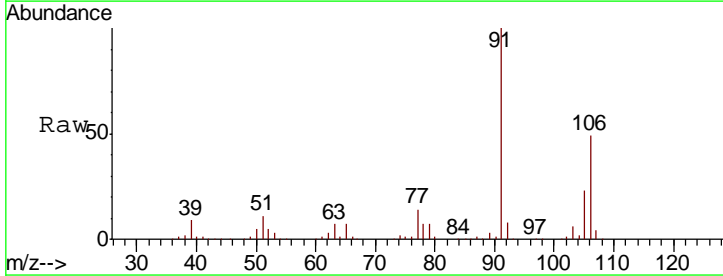
Instrument : MSVOA_V
ClientSampled :

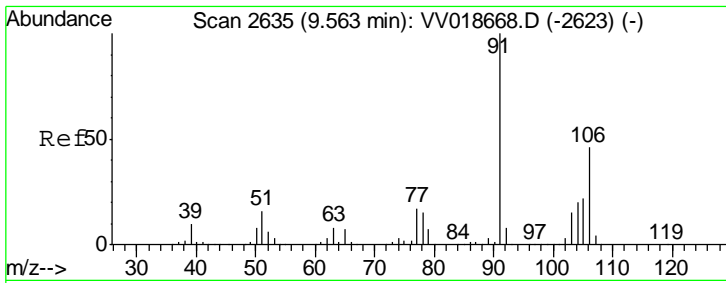
Tgt Ion	Resp	Lower	Upper
91	392188		
106	31.4	21.9	40.7



#53
m,p-Xylene
Concen: 43.135 ug/L
RT: 9.16 min Scan# 2509
Delta R.T. -0.00 min
Lab File: VV018682.D
Acq: 05 Oct 2020 18:45

Tgt Ion	Resp	Lower	Upper
106	152413		
91	204.8	142.3	264.3

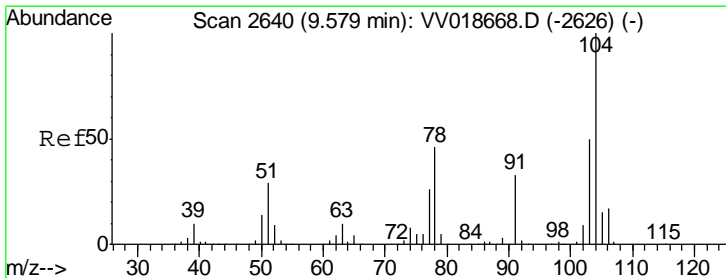
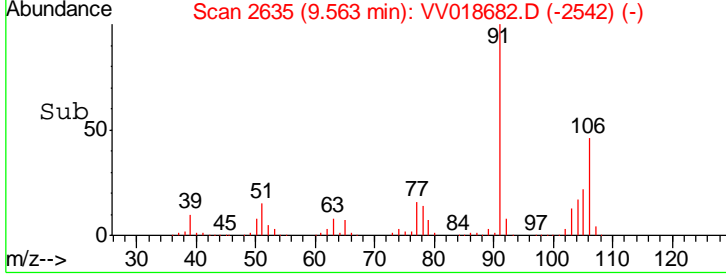
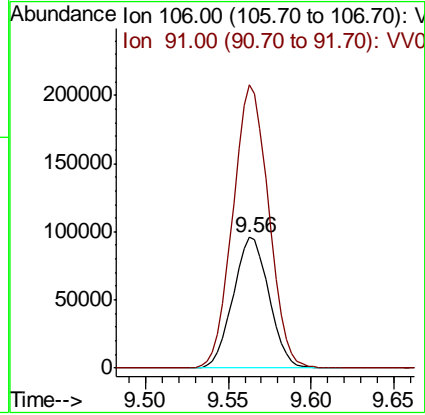
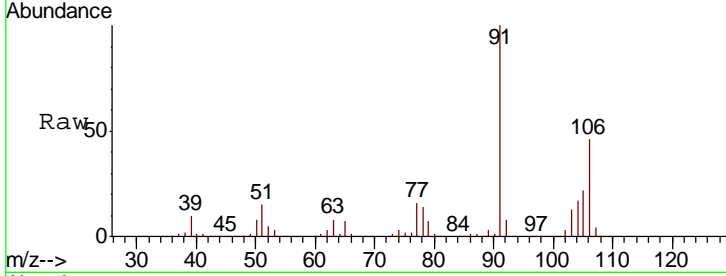




#54
 o-xylene
 Concen: 43.224 ug/L
 RT: 9.56 min Scan# 2635
 Delta R.T. -0.00 min
 Lab File: VV018682.D
 Acq: 05 Oct 2020 18:45

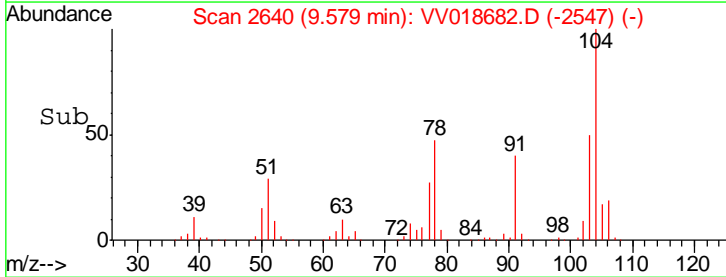
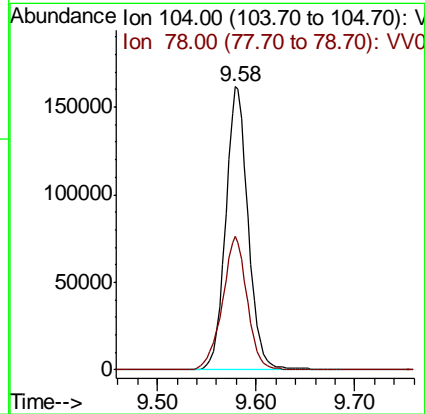
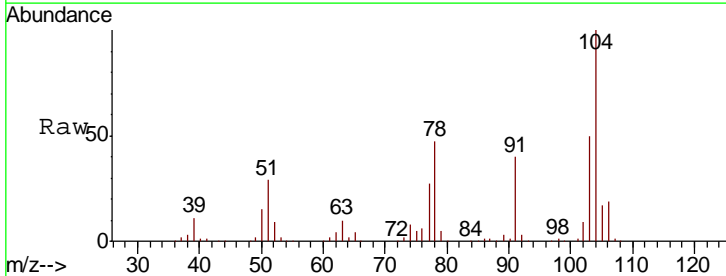
Instrument : MSVOA_V
 ClientSampled :

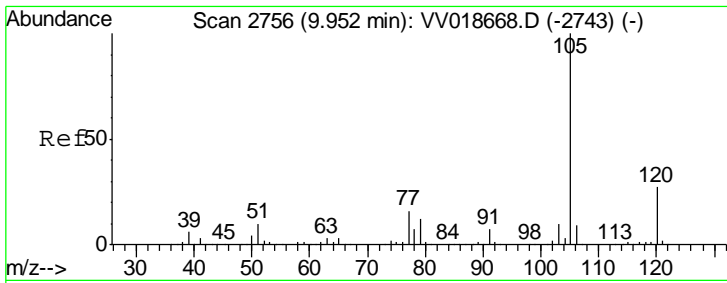
Tgt Ion:106 Resp: 144599
 Ion Ratio Lower Upper
 106 100
 91 216.5 151.0 280.4



#55
 Styrene
 Concen: 44.441 ug/L
 RT: 9.58 min Scan# 2640
 Delta R.T. -0.00 min
 Lab File: VV018682.D
 Acq: 05 Oct 2020 18:45

Tgt Ion:104 Resp: 258867
 Ion Ratio Lower Upper
 104 100
 78 47.3 30.2 56.2

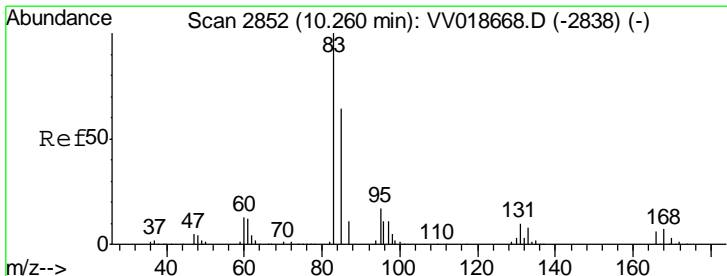
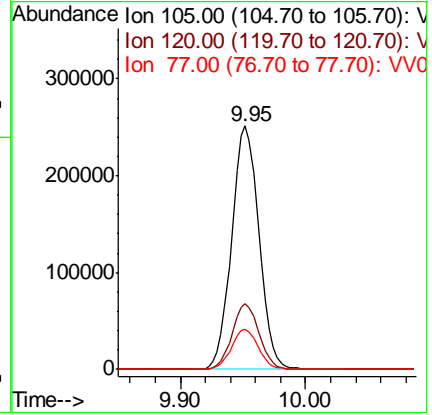
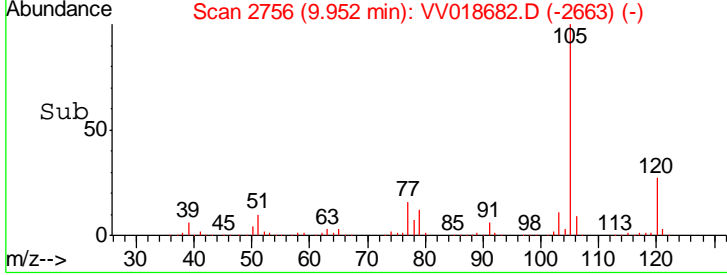
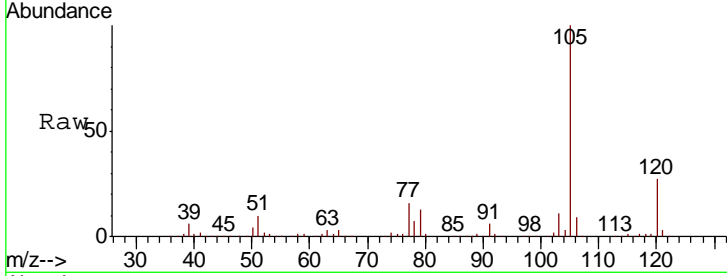




#56
 Isopropylbenzene
 Concen: 42.272 ug/L
 RT: 9.95 min Scan# 2756
 Delta R.T. -0.00 min
 Lab File: VV018682.D
 Acq: 05 Oct 2020 18:45

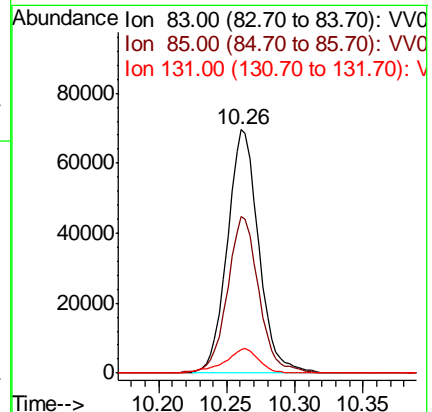
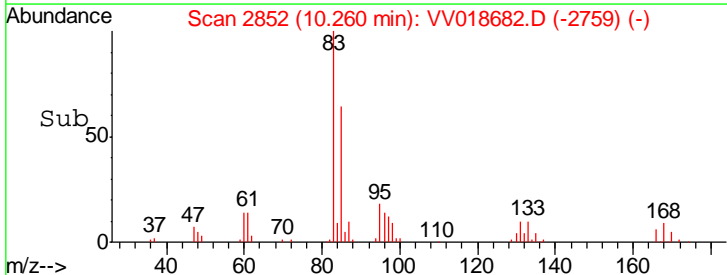
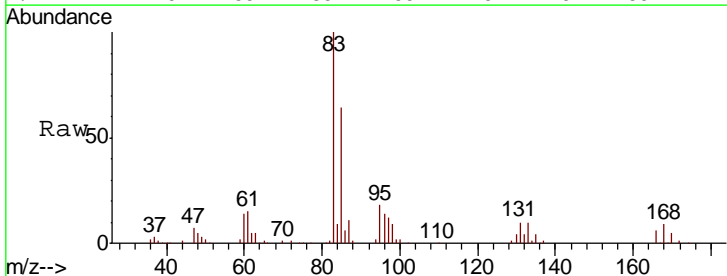
Instrument :
 MSVOA_V
 ClientSampled :

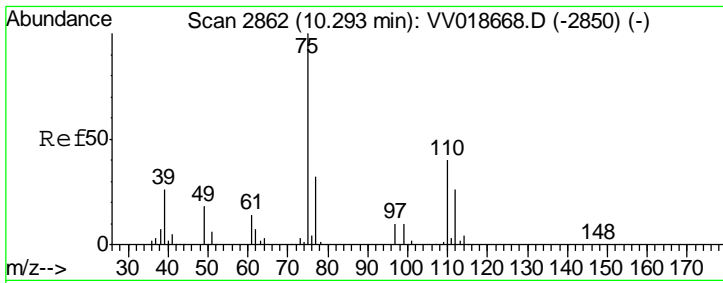
Tgt Ion	Resp	Lower	Upper
105	379253		
120	26.5	21.5	32.3
77	16.2	12.2	18.2



#58
 1,1,2,2-Tetrachloroethane
 Concen: 41.141 ug/L
 RT: 10.26 min Scan# 2852
 Delta R.T. -0.00 min
 Lab File: VV018682.D
 Acq: 05 Oct 2020 18:45

Tgt Ion	Resp	Lower	Upper
83	111464		
85	64.1	44.5	82.7
131	9.7	8.6	12.8

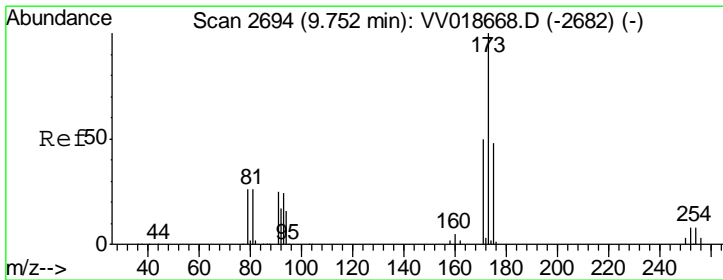
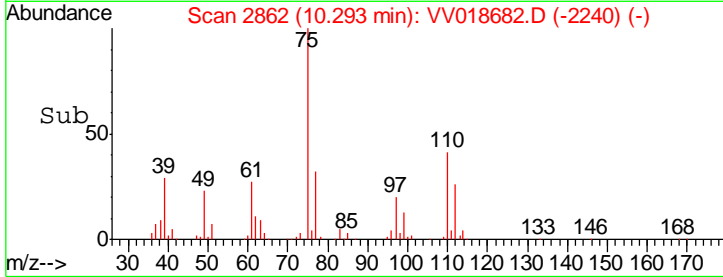
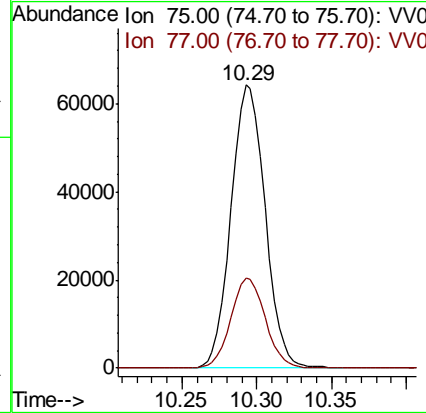
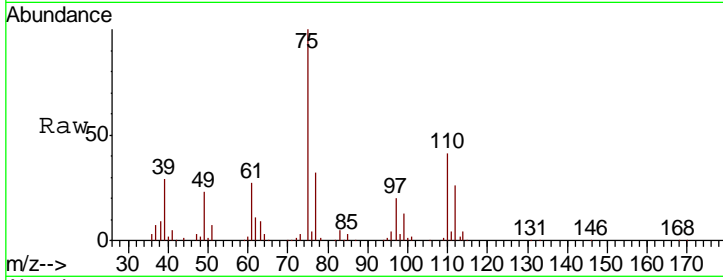




#59
 1,2,3-Trichloropropane
 Concen: 43.292 ug/L
 RT: 10.29 min Scan# 2862
 Delta R.T. -0.00 min
 Lab File: VV018682.D
 Acq: 05 Oct 2020 18:45

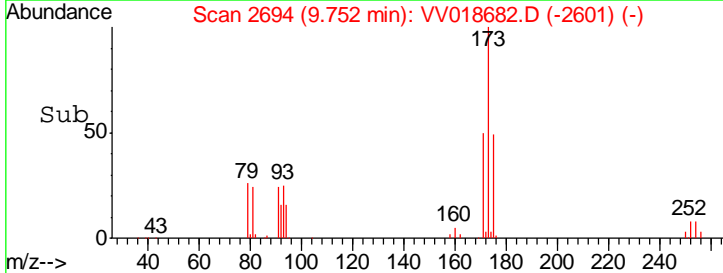
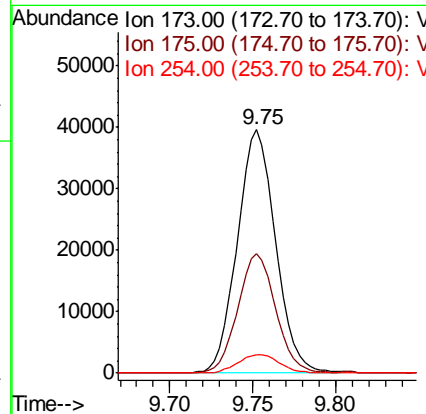
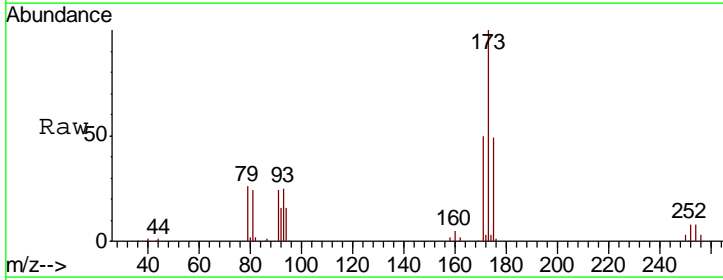
Instrument : MSVOA_V
 ClientSampled :

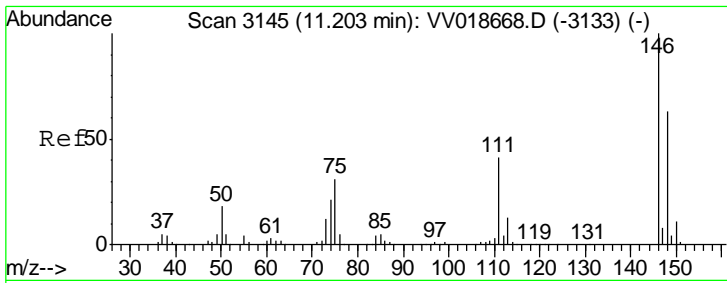
Tgt Ion	Resp	Lower	Upper
75	102245		
77	32.1	25.4	38.0



#61
 Bromoform
 Concen: 40.518 ug/L
 RT: 9.75 min Scan# 2694
 Delta R.T. -0.00 min
 Lab File: VV018682.D
 Acq: 05 Oct 2020 18:45

Tgt Ion	Resp	Lower	Upper
173	63613		
175	48.6	39.8	59.8
254	8.1	8.5	12.7#

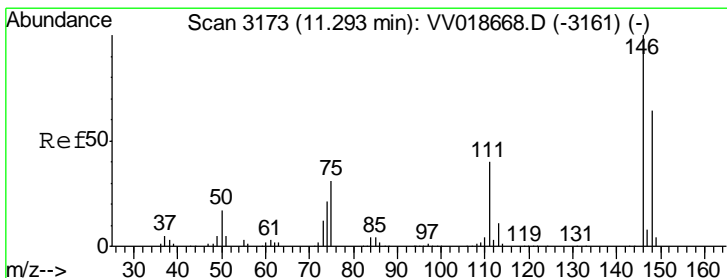
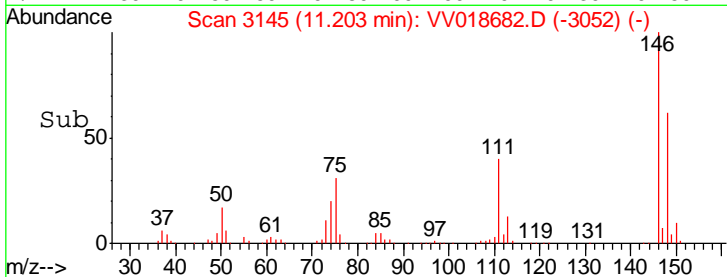
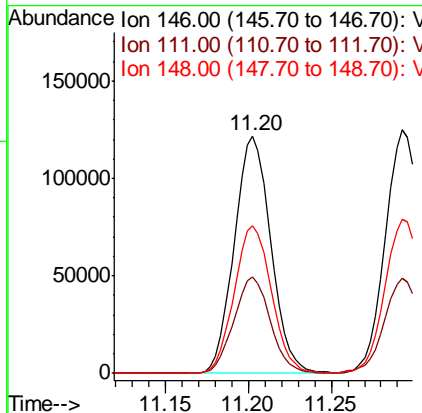
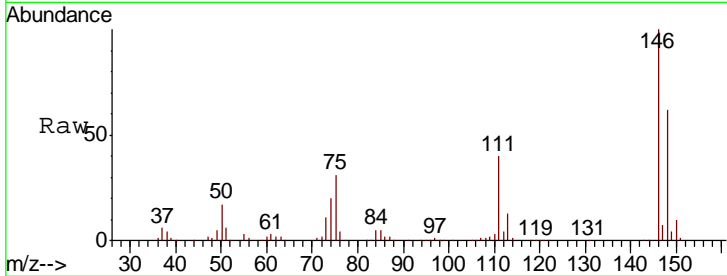




#62
 1,3-Dichlorobenzene
 Concen: 42.160 ug/L
 RT: 11.20 min Scan# 3145
 Delta R.T. -0.00 min
 Lab File: VV018682.D
 Acq: 05 Oct 2020 18:45

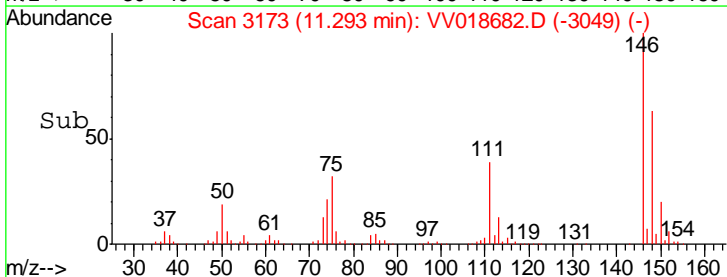
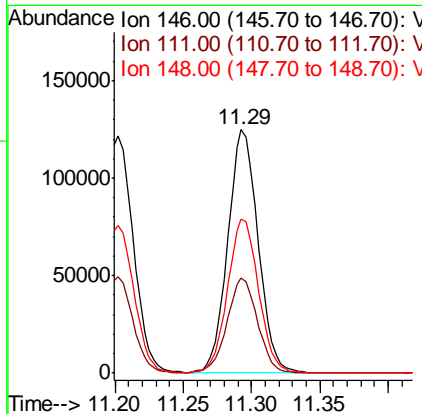
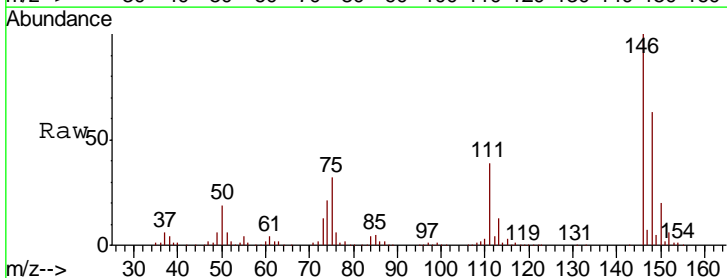
Instrument :
 MSVOA_V
 ClientSampled :

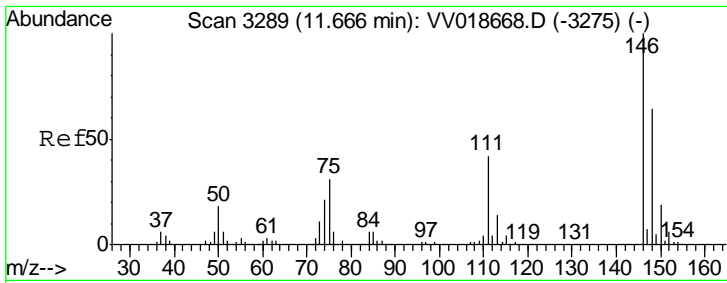
Tgt Ion	Resp	Lower	Upper
146	186490		
111	40.4	26.8	49.8
148	62.1	44.0	81.8



#63
 1,4-Dichlorobenzene
 Concen: 42.221 ug/L
 RT: 11.29 min Scan# 3173
 Delta R.T. -0.00 min
 Lab File: VV018682.D
 Acq: 05 Oct 2020 18:45

Tgt Ion	Resp	Lower	Upper
146	192313		
111	39.1	26.2	48.6
148	63.3	44.4	82.5

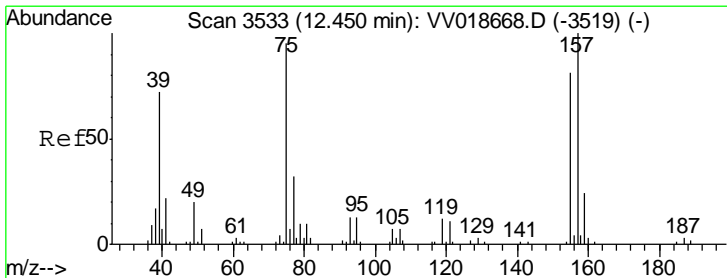
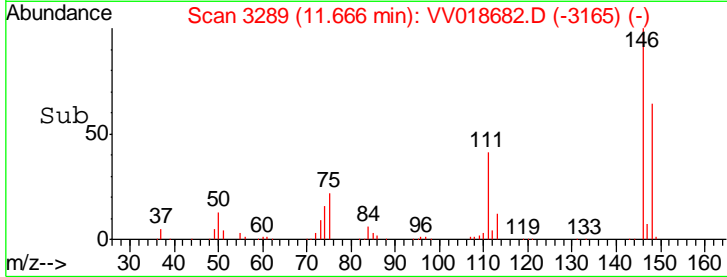
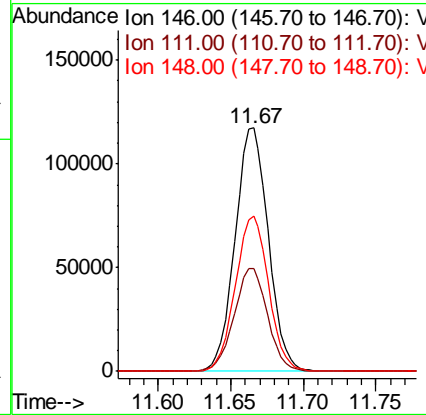
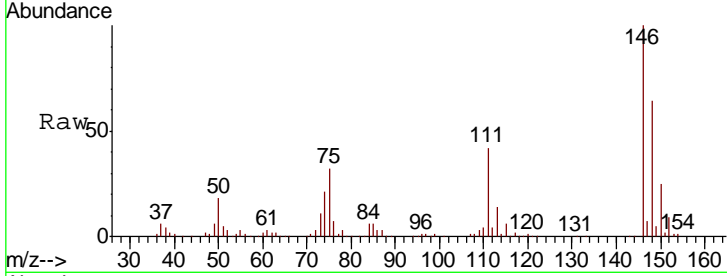




#65
 1,2-Dichlorobenzene
 Concen: 42.570 ug/L
 RT: 11.67 min Scan# 3289
 Delta R.T. -0.00 min
 Lab File: VV018682.D
 Acq: 05 Oct 2020 18:45

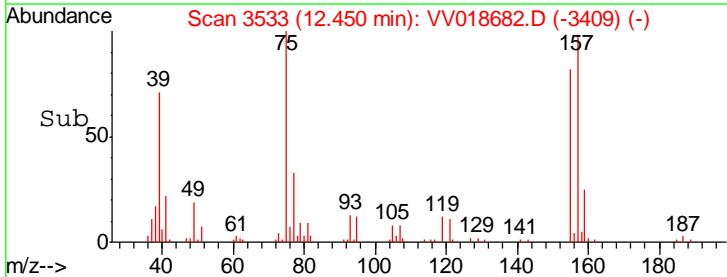
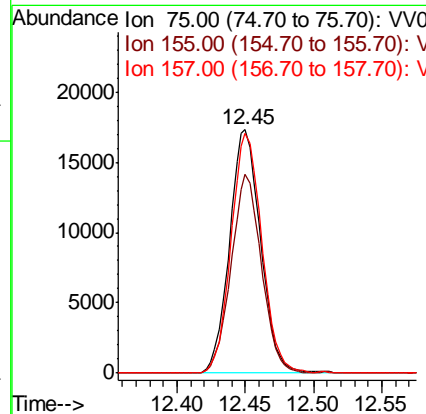
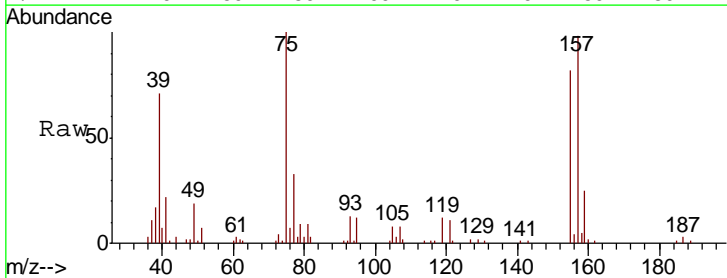
Instrument :
 MSVOA_V
 ClientSampled :

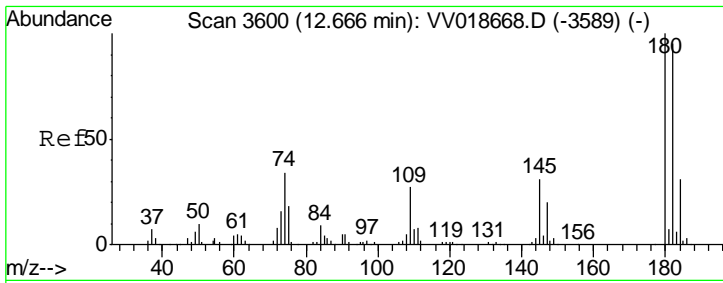
Tgt Ion	Resp	Lower	Upper
146	186285		
111	42.2	32.8	49.2
148	63.8	51.9	77.9



#66
 1,2-Dibromo-3-chloropropane
 Concen: 45.915 ug/L
 RT: 12.45 min Scan# 3533
 Delta R.T. -0.00 min
 Lab File: VV018682.D
 Acq: 05 Oct 2020 18:45

Tgt Ion	Resp	Lower	Upper
75	27429		
155	81.7	73.0	109.6
157	98.4	95.8	143.6

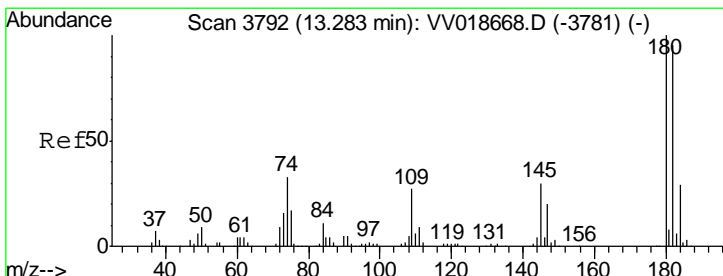
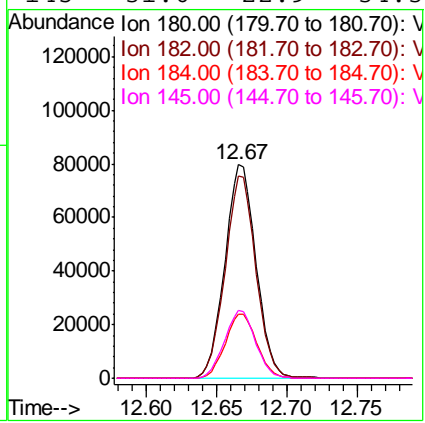
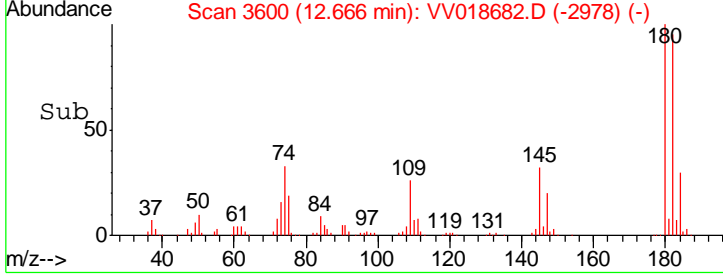
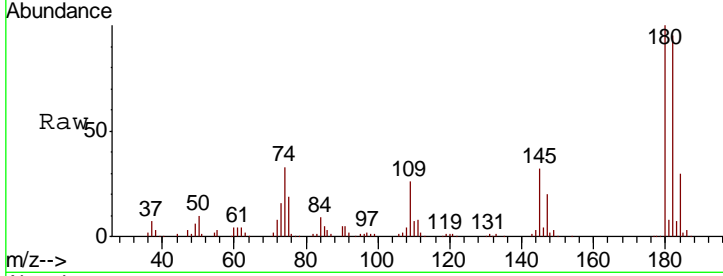




#67
 1,3,5-Trichlorobenzene
 Concen: 40.158 ug/L
 RT: 12.67 min Scan# 3600
 Delta R.T. -0.00 min
 Lab File: VV018682.D
 Acq: 05 Oct 2020 18:45

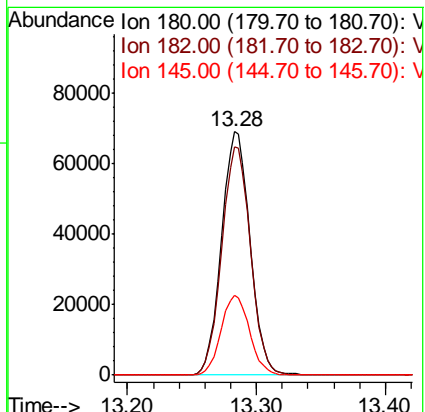
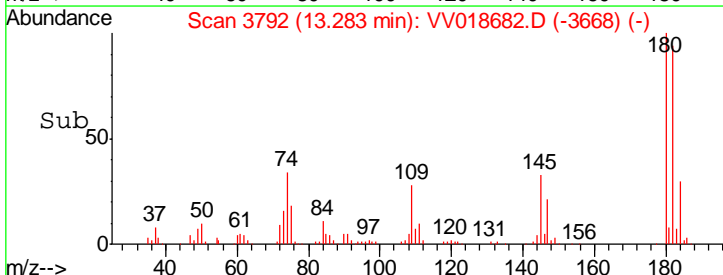
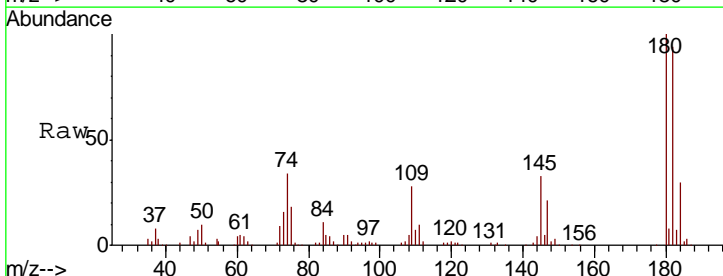
Instrument : MSVOA_V
 ClientSampled :

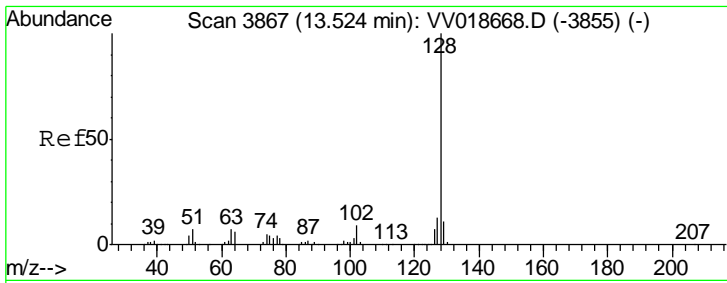
Tgt Ion	Resp	Lower	Upper
180	123046		
182	93.6	77.1	115.7
184	30.3	24.3	36.5
145	31.6	22.9	34.3



#68
 1,2,4-trichlorobenzene
 Concen: 37.130 ug/L
 RT: 13.28 min Scan# 3792
 Delta R.T. -0.00 min
 Lab File: VV018682.D
 Acq: 05 Oct 2020 18:45

Tgt Ion	Resp	Lower	Upper
180	105864		
182	94.1	76.3	114.5
145	32.7	23.6	35.4

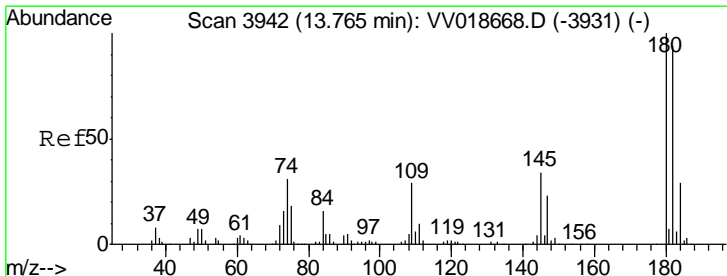
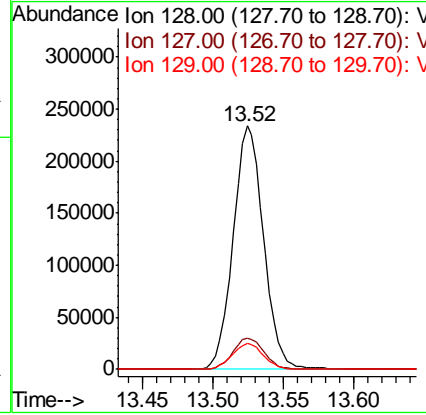
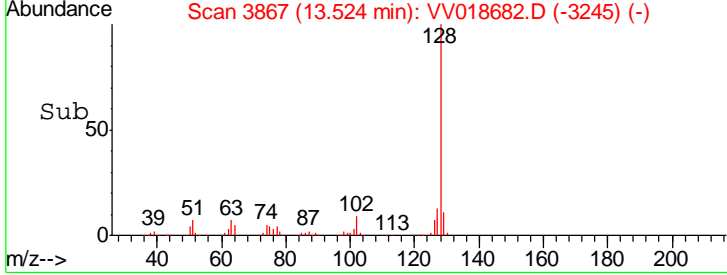
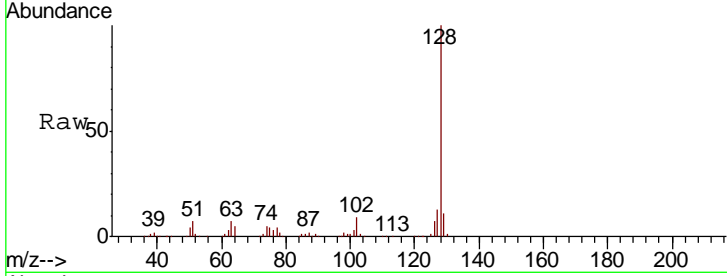




#69
 Naphthalene
 Concen: 43.137 ug/L
 RT: 13.52 min Scan# 3867
 Delta R.T. -0.00 min
 Lab File: VV018682.D
 Acq: 05 Oct 2020 18:45

Instrument : MSVOA_V
 ClientSampled :

Tgt Ion	Resp	Lower	Upper
128	352070		
127	13.1	10.3	15.5
129	11.0	8.6	12.8



#70
 1,2,3-Trichlorobenzene
 Concen: 38.884 ug/L
 RT: 13.77 min Scan# 3943
 Delta R.T. 0.00 min
 Lab File: VV018682.D
 Acq: 05 Oct 2020 18:45

Tgt Ion	Resp	Lower	Upper
180	111295		
182	94.9	77.1	115.7
145	33.7	25.1	37.7

