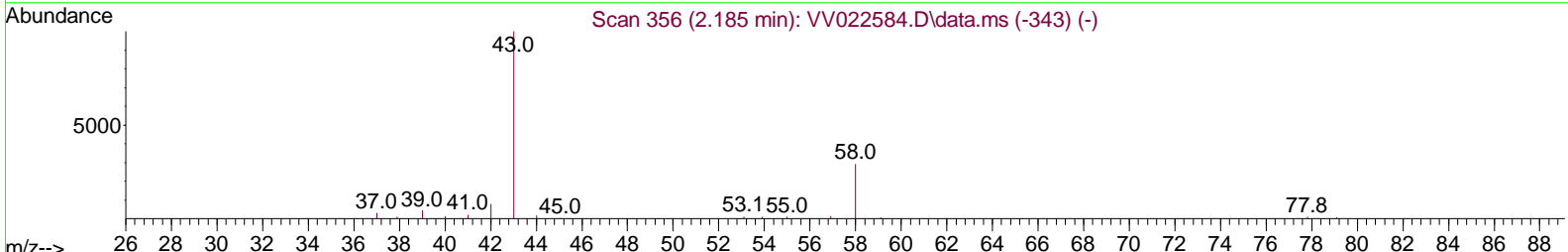
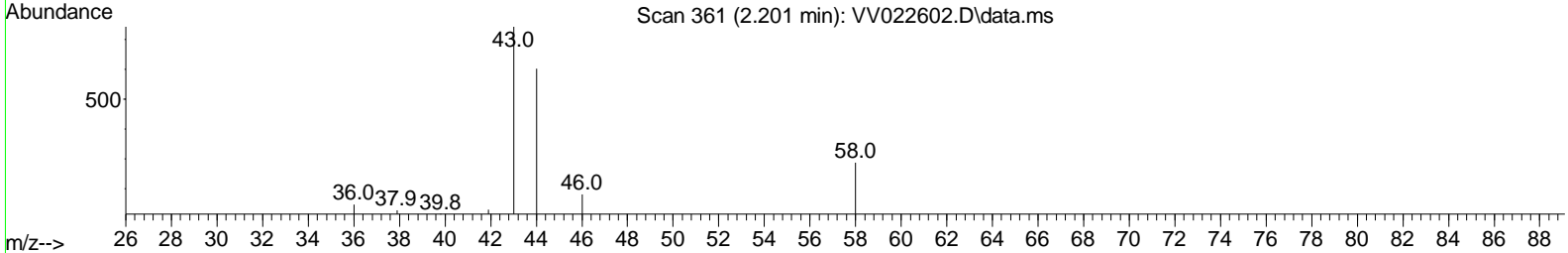
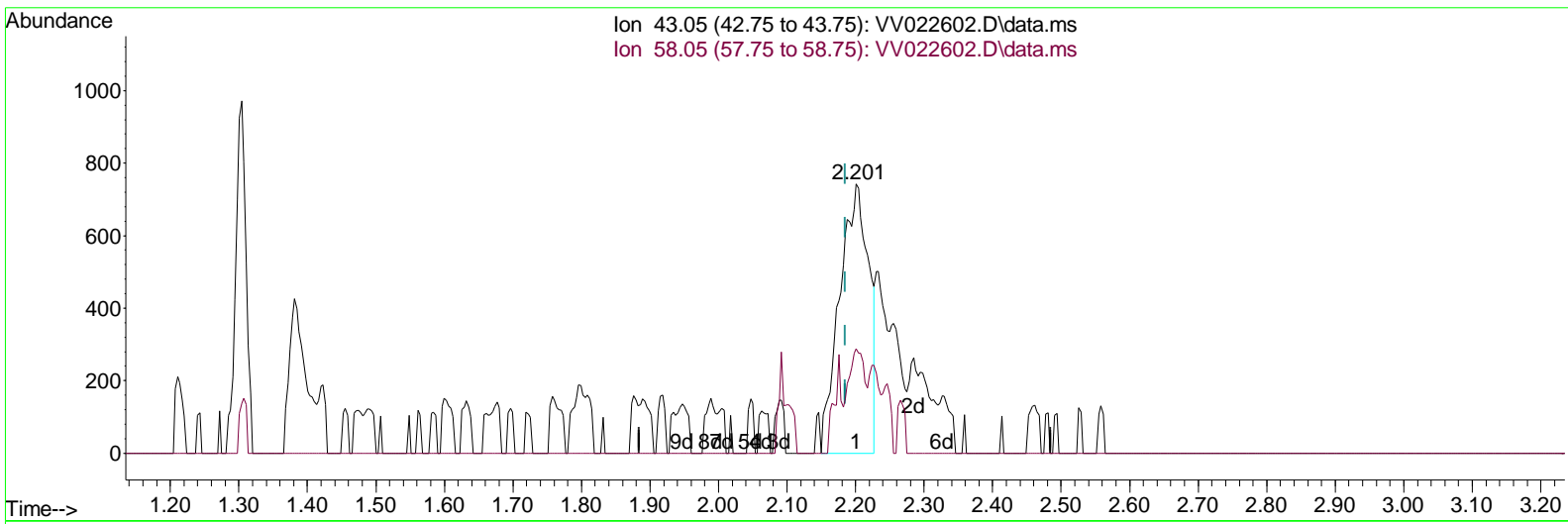


Data Path : Z:\voasrv\HPCHEM1\MSVOA_V\Data\VV100521\
 Data File : VV022602.D
 Acq On : 06 Oct 2021 05:02
 Operator : SY/MD
 Sample : M4050-07
 Mi sc : 25.0mL/MSVOA_V/WATER
 ALS Vial : 46 Sample Multiplier: 1

Instrument :
 MSVOA_V
ClientSampled :
 GB7C3

Manual Integrations
APPROVED
 MMDadoda
 10/7/2021 9:33:40 AM

Quant Time: Oct 06 08:09:47 2021
 Quant Method : Z:\voasrv\HPCHEM1\MSVOA_V\Method\SFAMVTR100421WMA.M
 Quant Title : TRACE VOA SFAM1.0
 QLast Update : Wed Oct 06 07:50:25 2021
 Response via : Initial Calibration



TIC: VV022602.D\data.ms

(13) Acetone (T)

2.201min (+ 0.016) 2.13 ug/L

response 2192

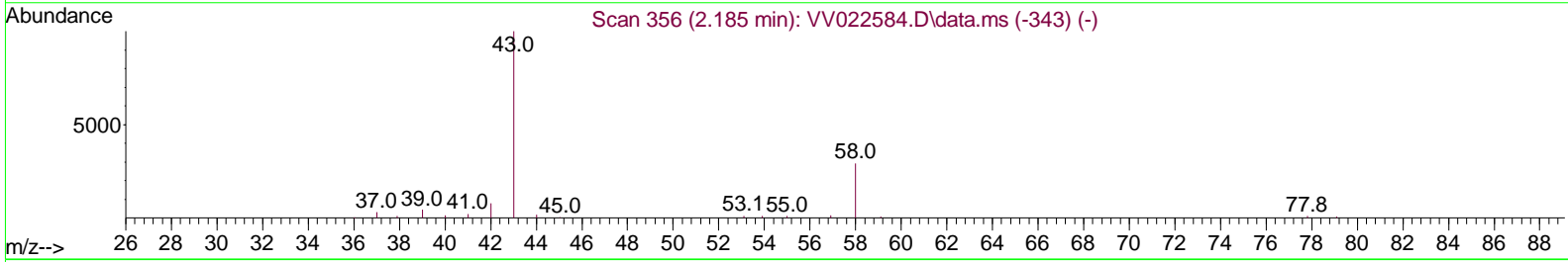
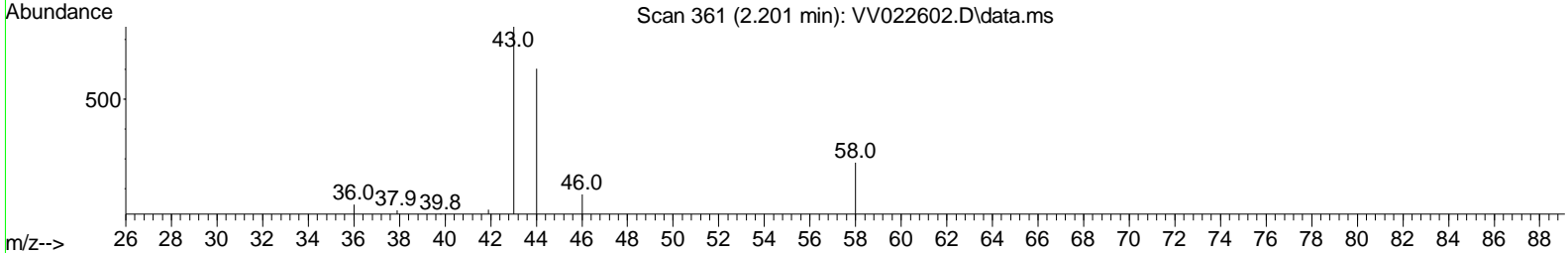
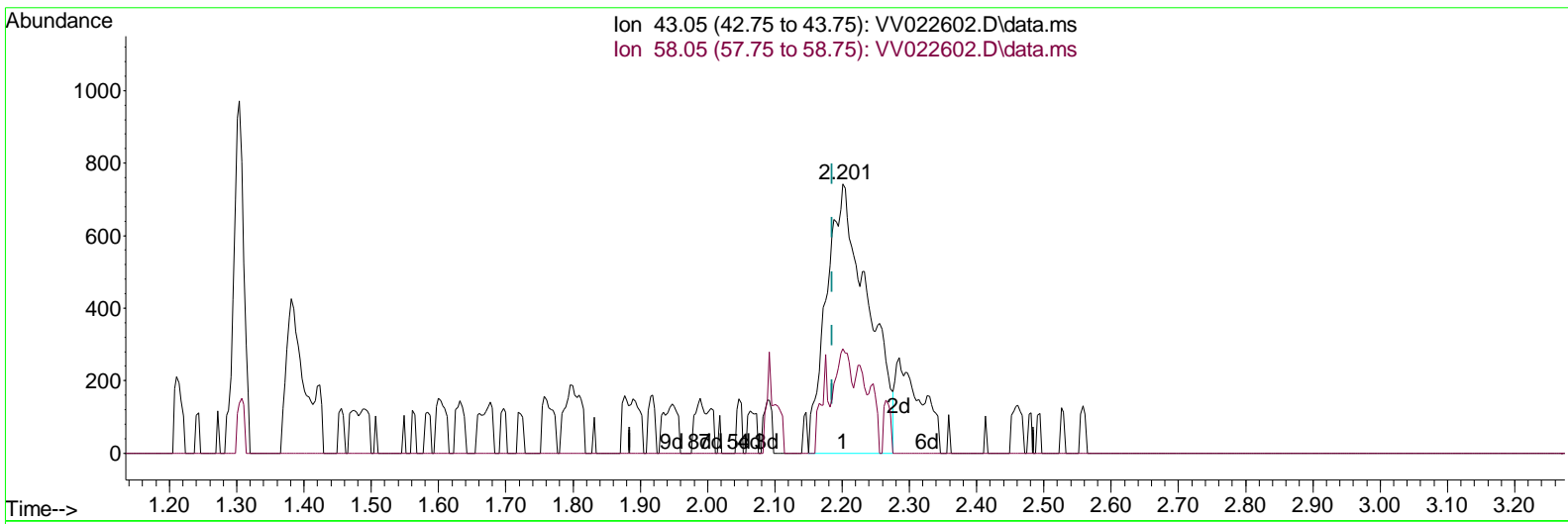
| Ion | Exp% | Act% |
|-------|--------|--------|
| 43.05 | 100.00 | 100.00 |
| 58.05 | 8.80 | 22.26# |
| 0.00 | 0.00 | 0.00 |
| 0.00 | 0.00 | 0.00 |

Data Path : Z:\voasrv\HPCHEM1\MSVOA_V\Data\VV100521\
 Data File : VV022602.D
 Acq On : 06 Oct 2021 05:02
 Operator : SY/MD
 Sample : M4050-07
 Mi sc : 25.0mL/MSVOA_V/WATER
 ALS Vial : 46 Sample Multiplier: 1

Instrument :
 MSVOA_V
Client Sampled :
 GB7C3

Manual Integrations
APPROVED
 MMDadoda
 10/7/2021 9:33:40 AM

Quant Time: Oct 06 08:09:47 2021
 Quant Method : Z:\voasrv\HPCHEM1\MSVOA_V\Method\SFAMVTR100421WMA.M
 Quant Title : TRACE VOA SFAM1.0
 QLast Update : Wed Oct 06 07:50:25 2021
 Response via : Initial Calibration



TIC: VV022602.D\data.ms

(13) Acetone (T)

2.201min (+ 0.016) 3.08 ug/L m

| response | 3172 | |
|----------|--------|--------|
| Ion | Exp% | Act% |
| 43.05 | 100.00 | 100.00 |
| 58.05 | 8.80 | 15.38 |
| 0.00 | 0.00 | 0.00 |
| 0.00 | 0.00 | 0.00 |

Data Path : Z:\voasrv\HPCHEM1\MSVOA_V\Data\VW100521\
 Data File : VW022602.D
 Acq On : 06 Oct 2021 05:02
 Operator : SY/MD
 Sample : M4050-07
 Misc : 25.0mL/MSVOA_V/WATER
 ALS Vial : 46 Sample Multiplier: 1

Instrument :
 MSVOA_V
ClientSampled :
 GB7C3

Manual Integrations
APPROVED
 MMDadoda
 10/7/2021 9:33:40 AM

Quant Time: Oct 06 08:09:47 2021
 Quant Method : Z:\voasrv\HPCHEM1\MSVOA_V\Method\SFAMVTR100421WMA.M
 Quant Title : TRACE VOA SFAM1.0
 QLast Update : Wed Oct 06 07:50:25 2021
 Response via : Initial Calibration

| Compound | R.T. | QI on | Response | Conc | Units | Dev(Min) |
|------------------------------------|--------|----------------|----------|--------|----------|----------|
| Internal Standards | | | | | | |
| 1) 1,4-Difluorobenzene | 5.619 | 114 | 101027 | 5.000 | ug/L | 0.00 |
| 28) Chlorobenzene-d5 | 8.854 | 117 | 98471 | 5.000 | ug/L | 0.00 |
| 58) 1,4-Dichlorobenzene-d4 | 11.252 | 152 | 45243 | 5.000 | ug/L | 0.00 |
| System Monitoring Compounds | | | | | | |
| 4) Vinyl Chloride-d3 | 1.301 | 65 | 15830 | 4.891 | ug/L | 0.00 |
| Spike Amount | 5.000 | Range 40 - 130 | Recovery | = | 97.800% | |
| 7) Chloroethane-d5 | 1.565 | 69 | 25350 | 5.810 | ug/L | 0.00 |
| Spike Amount | 5.000 | Range 65 - 130 | Recovery | = | 116.200% | |
| 11) 1,1-Dichloroethene-d2 | 2.105 | 63 | 32113 | 3.419 | ug/L | 0.00 |
| Spike Amount | 5.000 | Range 60 - 125 | Recovery | = | 68.400% | |
| 20) 2-Butanone-d5 | 3.905 | 46 | 95933 | 50.138 | ug/L | 0.00 |
| Spike Amount | 50.000 | Range 40 - 130 | Recovery | = | 100.280% | |
| 24) Chloroform-d | 4.349 | 84 | 58276 | 4.675 | ug/L | 0.00 |
| Spike Amount | 5.000 | Range 70 - 125 | Recovery | = | 93.600% | |
| 26) 1,2-Dichloroethane-d4 | 5.034 | 65 | 31467 | 5.359 | ug/L | 0.00 |
| Spike Amount | 5.000 | Range 70 - 130 | Recovery | = | 107.200% | |
| 32) Benzene-d6 | 5.050 | 84 | 106216 | 4.787 | ug/L | 0.00 |
| Spike Amount | 5.000 | Range 70 - 125 | Recovery | = | 95.800% | |
| 36) 1,2-Dichloropropane-d6 | 6.072 | 67 | 36123 | 4.614 | ug/L | 0.00 |
| Spike Amount | 5.000 | Range 60 - 140 | Recovery | = | 92.200% | |
| 41) Toluene-d8 | 7.320 | 98 | 82983 | 4.461 | ug/L | 0.00 |
| Spike Amount | 5.000 | Range 70 - 130 | Recovery | = | 89.200% | |
| 43) trans-1,3-Dichloroprop... | 7.629 | 79 | 8893 | 4.292 | ug/L | 0.00 |
| Spike Amount | 5.000 | Range 55 - 130 | Recovery | = | 85.800% | |
| 46) 2-Hexanone-d5 | 8.092 | 63 | 68729 | 53.576 | ug/L | 0.00 |
| Spike Amount | 50.000 | Range 45 - 130 | Recovery | = | 107.160% | |
| 56) 1,1,2,2-Tetrachloroeth... | 10.217 | 84 | 29564 | 4.970 | ug/L | 0.00 |
| Spike Amount | 5.000 | Range 65 - 120 | Recovery | = | 99.400% | |
| 66) 1,2-Dichlorobenzene-d4 | 11.625 | 152 | 38891 | 5.557 | ug/L | 0.00 |
| Spike Amount | 5.000 | Range 80 - 120 | Recovery | = | 111.200% | |
| Target Compounds | | | | | | |
| 13) Acetone | 2.201 | 43 | 3172m | 3.083 | ug/L | |

(#) = qualifier out of range (m) = manual integration (+) = signals summed

Data Path : Z:\voasrv\HPCHEM1\MSVOA_V\Data\VW100521\
 Data File : VW022602.D
 Acq On : 06 Oct 2021 05:02
 Operator : SY/MD
 Sample : M4050-07
 Mi sc : 25.0mL/MSVOA_V/WATER
 ALS Vial : 46 Sample Multiplier: 1

Instrument :
 MSVOA_V
Client Sampled :
 GB7C3

Manual Integrations
APPROVED
 MMDadoda
 10/7/2021 9:33:40 AM

Quant Time: Oct 06 08:09:47 2021
 Quant Method : Z:\voasrv\HPCHEM1\MSVOA_V\Method\SFAMVTR100421WMA.M
 Quant Title : TRACE VOA SFAM1.0
 QLast Update : Wed Oct 06 07:50:25 2021
 Response via : Initial Calibration

