

Data Path : Z:\voasrv\HPCHEM1\MSVOA_V\Data\VV100721\
 Data File : VV022672.D
 Acq On : 07 Oct 2021 19:05
 Operator : SY/MD
 Sample : M4051-21
 Misc : 25.0mL/MSVOA_V/WATER
 ALS Vial : 21 Sample Multiplier: 1

Instrument :
 MSVOA_V
 ClientSampleId :
 VHBLK001

Integration Parameters: rteint.p
 Integrator: RTE
 Smoothing : ON Filtering: 5
 Sampling : 1 Min Area: 3 % of largest Peak
 Start Thrs: 0.1 Max Peaks: 100
 Stop Thrs : 0 Peak Location: TOP

If leading or trailing edge < 100 prefer < Baseline drop else tangent >
 Peak separation: 5

Method : Z:\voasrv\HPCHEM1\MSVOA_V\Method\SFAMVTR100721WMA.M
 Title : TRACE VOA SFAM1.0

Signal : TIC: VV022672.D\data.ms

peak #	R.T. min	first scan	max scan	last scan	PK TY	peak height	corr. area	corr. % max.	% of total
1	1.304	74	82	96	rVB	122627	127499	14.87%	1.840%
2	1.564	155	163	177	rBV	119070	133451	15.57%	1.926%
3	2.101	320	330	346	rBV	222066	318999	37.21%	4.603%
4	2.500	445	454	467	rVB	12977	20408	2.38%	0.294%
5	3.921	880	896	922	rBV	68492	260985	30.45%	3.766%
6	4.349	1013	1029	1058	rVB3	133111	384475	44.85%	5.548%
7	5.043	1228	1245	1271	rBV2	372010	857197	100.00%	12.369%
8	5.616	1409	1423	1450	rBV	259238	519746	60.63%	7.500%
9	5.902	1501	1512	1530	rVB3	14392	30374	3.54%	0.438%
10	6.072	1551	1565	1587	rBV	198766	402778	46.99%	5.812%
11	6.989	1838	1850	1865	rBV	84931	153517	17.91%	2.215%
12	7.317	1938	1952	1970	rBV	411314	708761	82.68%	10.227%
13	7.400	1970	1978	1990	rVB2	6547	13784	1.61%	0.199%
14	7.625	2038	2048	2067	rBV	52582	91878	10.72%	1.326%
15	8.098	2184	2195	2235	rBV2	343212	846656	98.77%	12.217%
16	8.853	2417	2430	2462	rBV	395275	641367	74.82%	9.254%
17	10.220	2843	2855	2870	rBV	132695	212201	24.76%	3.062%
18	11.249	3164	3175	3200	rBV	372220	579113	67.56%	8.356%
19	11.625	3280	3292	3313	rBV	397164	627184	73.17%	9.050%

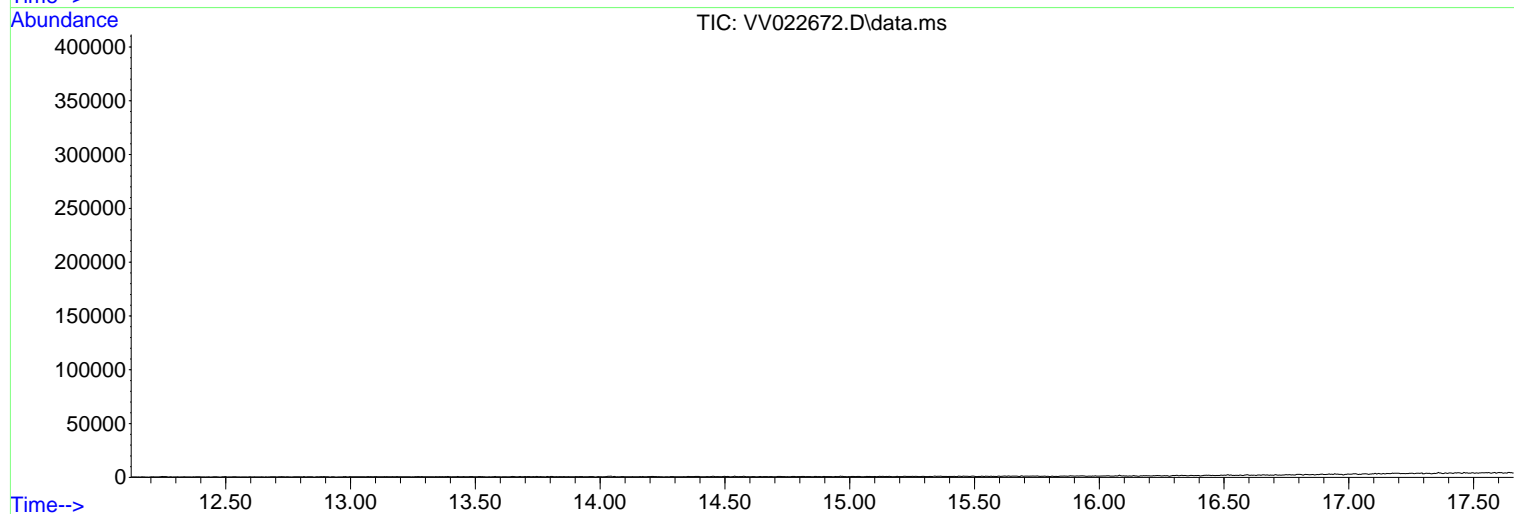
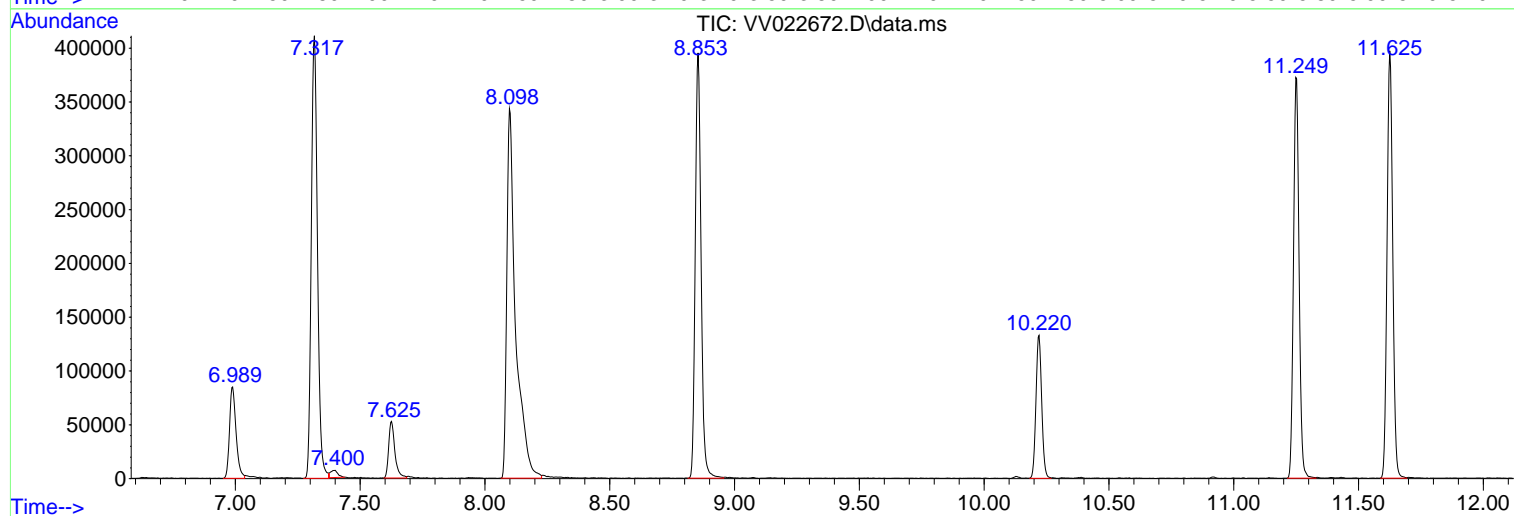
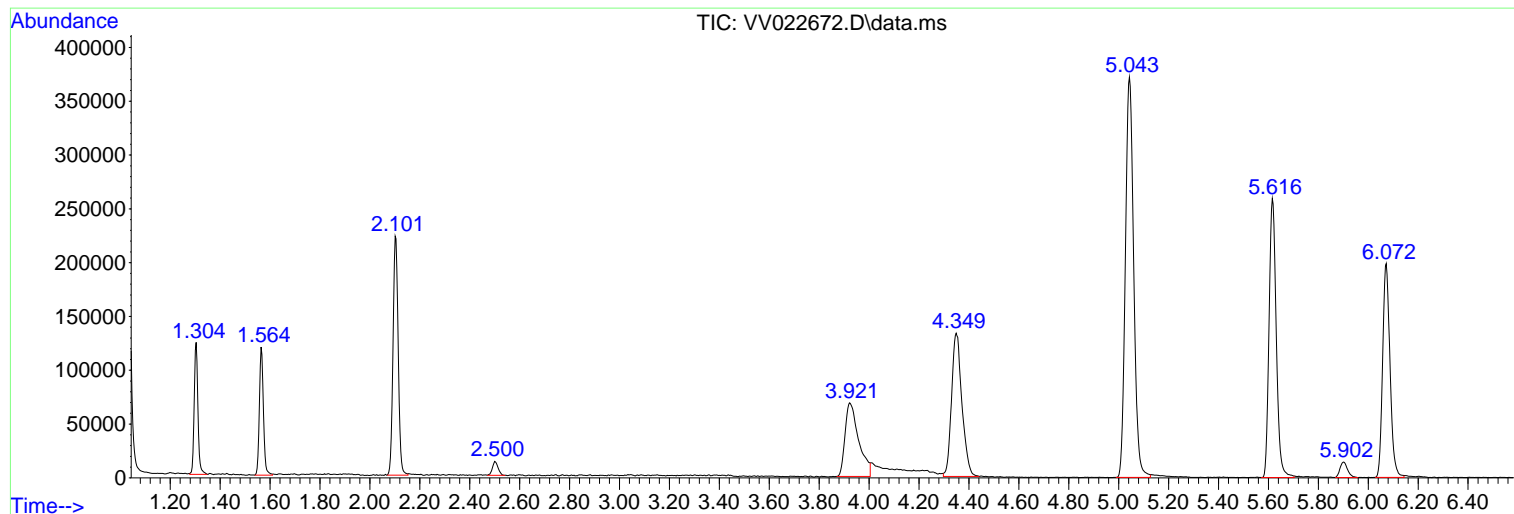
Sum of corrected areas: 6930373

Data Path : Z:\voasrv\HPCHEM1\MSVOA_V\Data\VV100721\
Data File : VV022672.D
Acq On : 07 Oct 2021 19:05
Operator : SY/MD
Sample : M4051-21
Misc : 25.0mL/MSVOA_V/WATER
ALS Vial : 21 Sample Multiplier: 1

Instrument :
MSVOA_V
ClientSampled :
VHBLK001

Quant Method : Z:\voasrv\HPCHEM1\MSVOA_V\Method\SFAMVTR100721WMA.M
Quant Title : TRACE VOA SFAM1.0

TIC Library : C:\Database\NIST20.L
TIC Integration Parameters: LSCINT.P



Data Path : Z:\voasrv\HPCHEM1\MSVOA_V\Data\VV100721\
Data File : VV022672.D
Acq On : 07 Oct 2021 19:05
Operator : SY/MD
Sample : M4051-21
Misc : 25.0mL/MSVOA_V/WATER
ALS Vial : 21 Sample Multiplier: 1

Instrument :
MSVOA_V
ClientSampleId :
VHBLK001

Quant Method : Z:\voasrv\HPCHEM1\MSVOA_V\Method\SFAMVTR100721WMA.M
Quant Title : TRACE VOA SFAM1.0

TIC Library : C:\Database\NIST20.L
TIC Integration Parameters: LSCINT.P

No Library Search Compounds Detected

Data Path : Z:\voasrv\HPCHEM1\MSVOA_V\Data\VV100721\
Data File : VV022672.D
Acq On : 07 Oct 2021 19:05
Operator : SY/MD
Sample : M4051-21
Misc : 25.0mL/MSVOA_V/WATER
ALS Vial : 21 Sample Multiplier: 1

Instrument :
MSVOA_V
ClientSampleId :
VHBLK001

Quant Method : Z:\voasrv\HPCHEM1\MSVOA_V\Method\SFAMVTR100721WMA.M
Quant Title : TRACE VOA SFAM1.0

TIC Library : C:\Database\NIST0.L
TIC Integration Parameters: LSCINT.P

TIC Top Hit name	RT	EstConc	Units	Response	--Internal Standard--		
					#	RT	Resp Conc
