

Data Path : Z:\VOASRV\HPCHEM1\MSVOA V\DATA\VV100820\
 Data File : VV018771.D
 Acq On : 08 Oct 2020 17:59
 Operator : SY/MD
 Sample : VSTDCCC050EC
 Misc : 5.0mL/MSVOA V/WATER
 ALS Vial : 17 Sample Multiplier: 1

Instrument :
 MSVOA_V
 ClientSampleId :
 VSTD05079

Quant Time: Oct 09 07:19:11 2020
 Quant Method : Z:\VOASRV\HPCHEM1\MSVOA_V\METHOD\SOMVLM092920WMA.M
 Quant Title : VOC Analysis
 QLast Update : Fri Oct 09 07:09:39 2020
 Response via : Initial Calibration

Internal Standards	R.T.	QIon	Response	Conc	Units	Dev(Min)
1) 1,4-Difluorobenzene	5.64	114	378382	50.00	ug/L	0.00
28) Chlorobenzene-d5	8.87	117	339044	50.00	ug/L	0.00
60) 1,4-Dichlorobenzene-d4	11.27	152	194704	50.00	ug/L	0.00

System Monitoring Compounds

4) Vinyl Chloride-d3	1.32	65	139425	62.83	ug/L	0.00
Spiked Amount	50.000	Range	60 - 135	Recovery	=	125.66%
7) Chloroethane-d5	1.58	69	113722	61.98	ug/L	0.00
Spiked Amount	50.000	Range	70 - 130	Recovery	=	123.96%
11) 1,1-Dichloroethene-d2	2.12	63	272688	60.31	ug/L	0.00
Spiked Amount	50.000	Range	60 - 125	Recovery	=	120.62%
21) 2-Butanone-d5	3.91	46	166099	100.34	ug/L	0.00
Spiked Amount	100.000	Range	40 - 130	Recovery	=	100.34%
24) Chloroform-d	4.37	84	244643	50.98	ug/L	0.00
Spiked Amount	50.000	Range	70 - 125	Recovery	=	101.96%
26) 1,2-Dichloroethane-d4	5.05	65	168326	55.26	ug/L	0.00
Spiked Amount	50.000	Range	70 - 125	Recovery	=	110.52%
32) Benzene-d6	5.07	84	485623	56.55	ug/L	0.00
Spiked Amount	50.000	Range	70 - 125	Recovery	=	113.10%
36) 1,2-Dichloropropane-d6	6.09	67	163935	63.18	ug/L	0.00
Spiked Amount	50.000	Range	70 - 120	Recovery	=	126.36%#
41) Toluene-d8	7.33	98	418468	51.80	ug/L	0.00
Spiked Amount	50.000	Range	80 - 120	Recovery	=	103.60%
43) trans-1,3-Dichloropropene-	7.64	79	73704	52.58	ug/L	0.00
Spiked Amount	50.000	Range	60 - 125	Recovery	=	105.16%
47) 2-Hexanone-d5	8.11	63	104241	105.77	ug/L	0.00
Spiked Amount	100.000	Range	45 - 130	Recovery	=	105.77%
57) 1,1,2,2-Tetrachloroethane-	10.23	84	166631	48.44	ug/L	0.00
Spiked Amount	50.000	Range	65 - 120	Recovery	=	96.88%
64) 1,2-Dichlorobenzene-d4	11.65	152	182771	48.81	ug/L	0.00
Spiked Amount	50.000	Range	80 - 120	Recovery	=	97.62%

Target Compounds

Target Compounds	R.T.	QIon	Response	Conc	Units	Ovalue
2) Dichlorodifluoromethane	1.14	85	104572	40.645	ug/L	99
3) Chloromethane	1.25	50	135151	49.094	ug/L	99
5) Vinyl chloride	1.32	62	142375	49.190	ug/L	99
6) Bromomethane	1.53	94	79981	40.601	ug/L	97
8) Chloroethane	1.60	64	94052	52.731	ug/L	95
9) Trichlorofluoromethane	1.77	101	211884	48.166	ug/L	100
10) 1,1,2-Trichloro-1,2,2-trif	2.13	101	120254	48.842	ug/L	94
12) 1,1-Dichloroethene	2.13	96	111656	47.271	ug/L	82
13) Acetone	2.19	43	164487	115.018	ug/L	99
14) Carbon disulfide	2.31	76	329189	43.022	ug/L	99
15) Methyl Acetate	2.44	43	139011	50.455	ug/L	94
16) Methylene chloride	2.52	84	121821	42.971	ug/L	92
17) trans-1,2-Dichloroethene	2.78	96	111747	41.345	ug/L	93
18) Methyl tert-butyl Ether	2.78	73	373271	45.328	ug/L	97
19) 1,1-Dichloroethane	3.21	63	226239	47.806	ug/L	99
20) cis-1,2-Dichloroethene	3.94	96	123594	43.028	ug/L	87
22) 2-Butanone	3.99	43	189144	104.697	ug/L	96

Data Path : Z:\VOASRV\HPCHEM1\MSVOA V\DATA\VV100820\
 Data File : VV018771.D
 Acq On : 08 Oct 2020 17:59
 Operator : SY/MD
 Sample : VSTDCCC050EC
 Misc : 5.0mL/MSVOA V/WATER
 ALS Vial : 17 Sample Multiplier: 1

Instrument :
 MSVOA_V
 ClientSampleId :
 VSTD05079

Quant Time: Oct 09 07:19:11 2020
 Quant Method : Z:\VOASRV\HPCHEM1\MSVOA_V\METHOD\SOMVLM092920WMA.M
 Quant Title : VOC Analysis
 QLast Update : Fri Oct 09 07:09:39 2020
 Response via : Initial Calibration

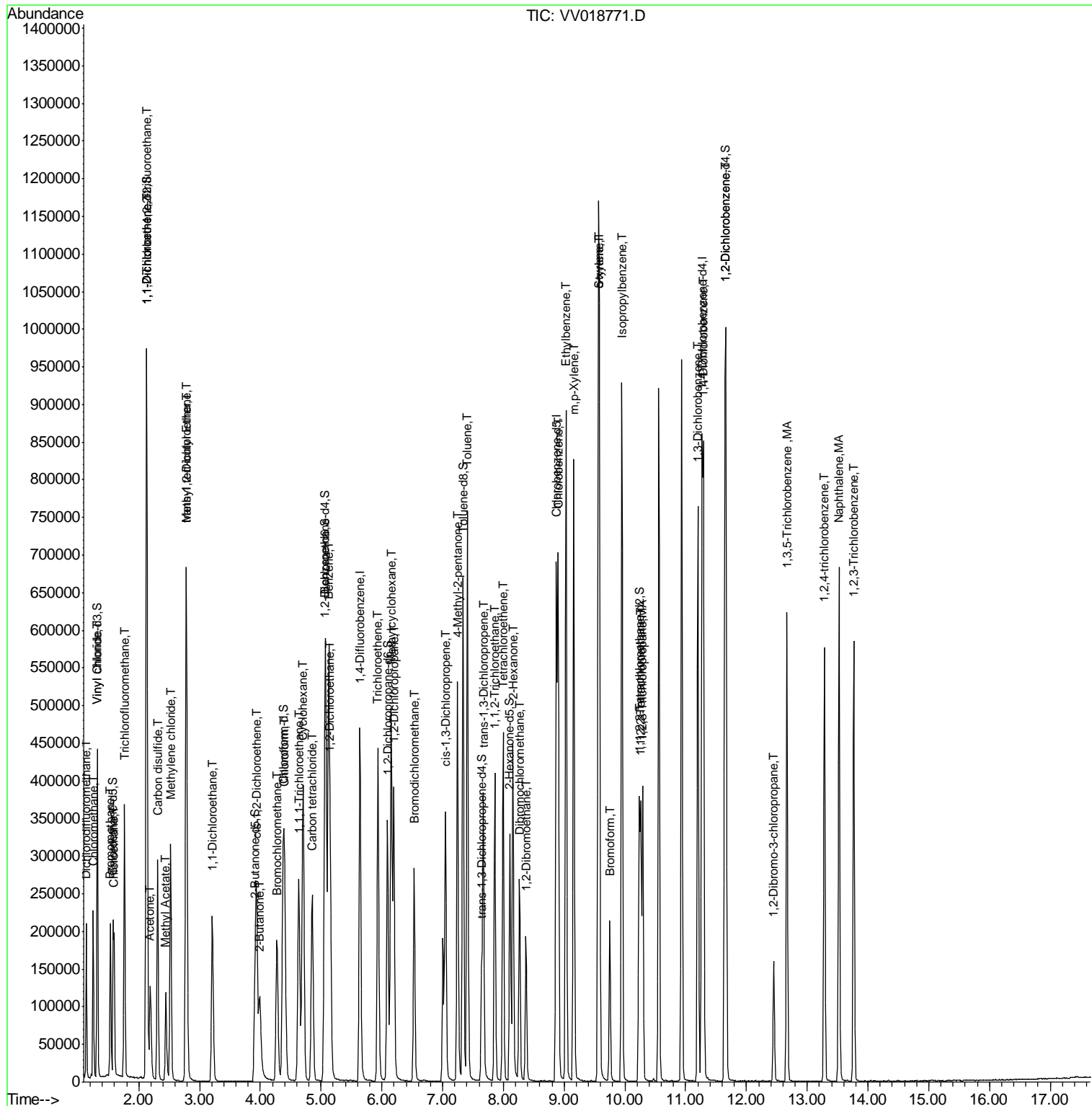
Internal Standards	R.T.	QIon	Response	Conc	Units	Dev(Min)
23) Bromochloromethane	4.27	128	63643	40.292	ug/L	84
25) Chloroform	4.40	83	239386	47.906	ug/L	98
27) 1,2-Dichloroethane	5.15	62	206091	52.914	ug/L	97
29) Cyclohexane	4.70	56	210372	54.403	ug/L	92
30) 1,1,1-Trichloroethane	4.63	97	214330	50.921	ug/L	97
31) Carbon tetrachloride	4.85	117	182229	48.240	ug/L	100
33) Benzene	5.13	78	534082	53.619	ug/L	100
34) Trichloroethene	5.94	95	146821	50.773	ug/L	95
35) Methylcyclohexane	6.15	83	191224	49.020	ug/L	92
37) 1,2-Dichloropropane	6.20	63	148202	57.993	ug/L	98
38) Bromodichloromethane	6.53	83	182891	53.439	ug/L	100
39) cis-1,3-Dichloropropene	7.05	75	204705	51.055	ug/L	97
40) 4-Methyl-2-pentanone	7.24	43	351712	106.658	ug/L	96
42) Toluene	7.41	91	522126	48.456	ug/L	98
44) trans-1,3-Dichloropropene	7.67	75	204035	51.804	ug/L	99
45) 1,1,2-Trichloroethane	7.86	97	118590	46.877	ug/L	99
46) Tetrachloroethene	8.00	164	102002	43.479	ug/L	99
48) 2-Hexanone	8.16	43	286214	111.242	ug/L	94
49) Dibromochloromethane	8.27	129	131463	45.433	ug/L	99
50) 1,2-Dibromoethane	8.37	107	121871	45.309	ug/L	96
51) Chlorobenzene	8.90	112	334740	45.920	ug/L	94
52) Ethylbenzene	9.03	91	587929	48.857	ug/L	98
53) m,p-Xylene	9.16	106	216715	46.600	ug/L	97
54) o-xylene	9.56	106	207646	47.161	ug/L	96
55) Styrene	9.58	104	371764	48.492	ug/L	92
56) Isopropylbenzene	9.95	105	560772	47.490	ug/L	97
58) 1,1,2,2-Tetrachloroethane	10.26	83	166630	46.729	ug/L	100
59) 1,2,3-Trichloropropane	10.29	75	152591	49.089	ug/L	99
61) Bromoform	9.75	173	92178	41.215	ug/L	99
62) 1,3-Dichlorobenzene	11.20	146	291582	46.274	ug/L	98
63) 1,4-Dichlorobenzene	11.29	146	297201	45.803	ug/L	99
65) 1,2-Dichlorobenzene	11.66	146	295186	47.353	ug/L	98
66) 1,2-Dibromo-3-chloropropan	12.45	75	38514	45.258	ug/L	87
67) 1,3,5-Trichlorobenzene	12.67	180	182044	41.707	ug/L	99
68) 1,2,4-trichlorobenzene	13.28	180	167760	41.304	ug/L	99
69) Naphthalene	13.52	128	495864	42.649	ug/L	99
70) 1,2,3-Trichlorobenzene	13.77	180	169268	41.515	ug/L	98

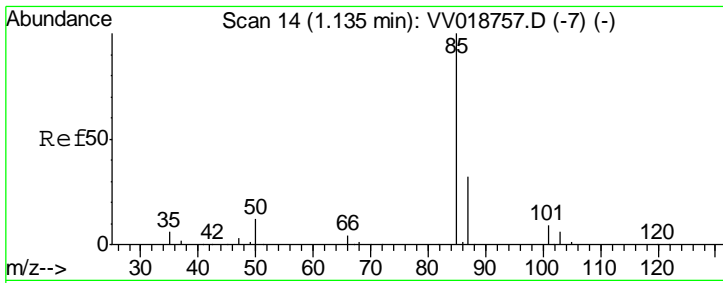
(#) = qualifier out of range (m) = manual integration (+) = signals summed

Data Path : Z:\VOASRV\HPCHEM1\MSVOA V\DATA\VV100820\
 Data File : VV018771.D
 Acq On : 08 Oct 2020 17:59
 Operator : SY/MD
 Sample : VSTDCCC050EC
 Misc : 5.0mL/MSVOA V/WATER
 ALS Vial : 17 Sample Multiplier: 1

Instrument :
 MSVOA_V
 Client Sampled :
 VSTD05079

Quant Time: Oct 09 07:19:11 2020
 Quant Method : Z:\VOASRV\HPCHEM1\MSVOA_V\METHOD\SOMVLM092920WMA.M
 Quant Title : VOC Analysis
 QLast Update : Fri Oct 09 07:09:39 2020
 Response via : Initial Calibration

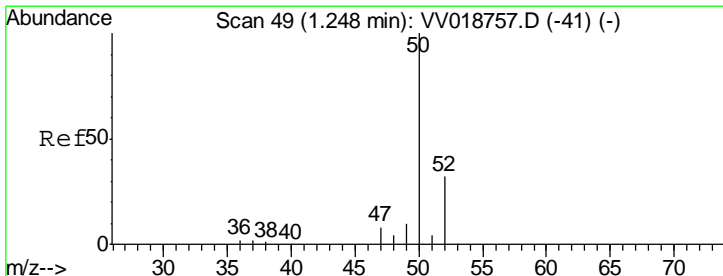
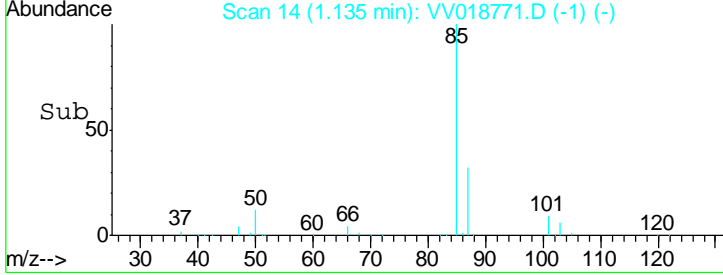
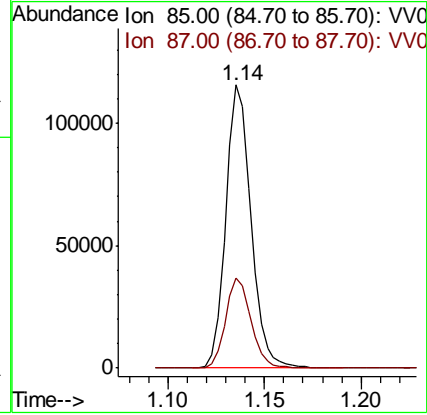
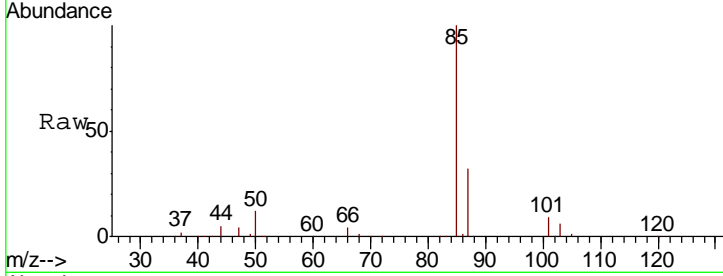




#2
 Dichlorodifluoromethane
 Concen: 40.645 ug/L
 RT: 1.14 min Scan# 14
 Delta R.T. -0.00 min
 Lab File: VV018771.D
 Acq: 08 Oct 2020 17:59

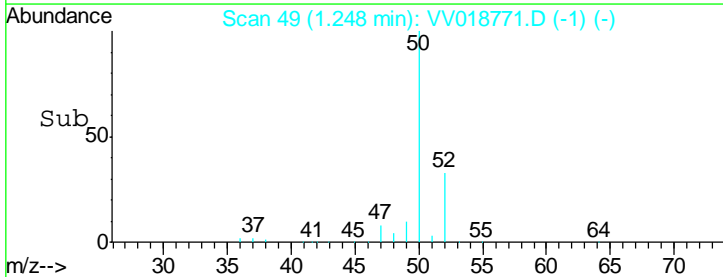
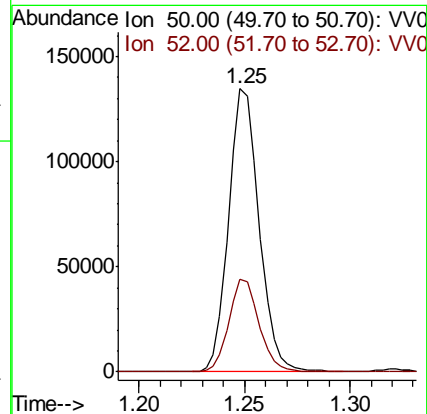
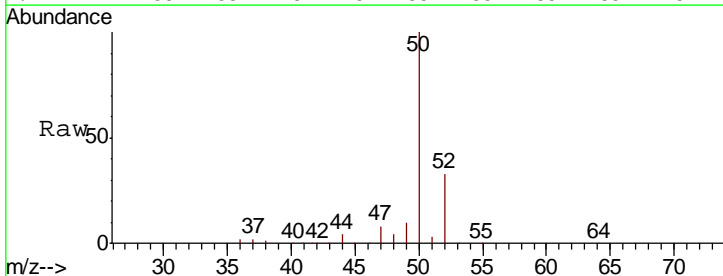
Instrument :
 MSVOA_V
ClientSampled :
 VSTD05079

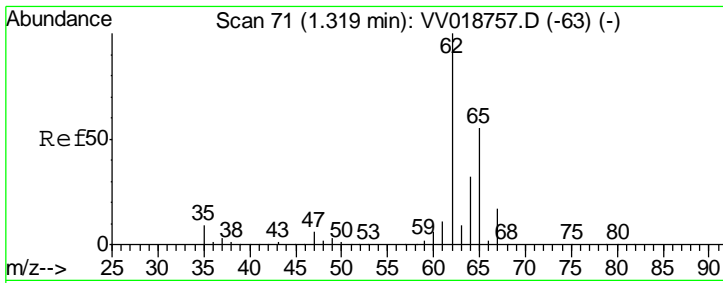
Tgt Ion: 85 Resp: 104572
 Ion Ratio Lower Upper
 85 100
 87 32.2 25.5 38.3



#3
 Chloromethane
 Concen: 49.094 ug/L
 RT: 1.25 min Scan# 49
 Delta R.T. -0.00 min
 Lab File: VV018771.D
 Acq: 08 Oct 2020 17:59

Tgt Ion: 50 Resp: 135151
 Ion Ratio Lower Upper
 50 100
 52 32.7 22.7 42.1

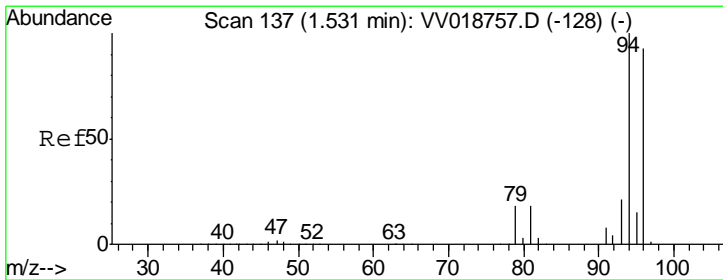
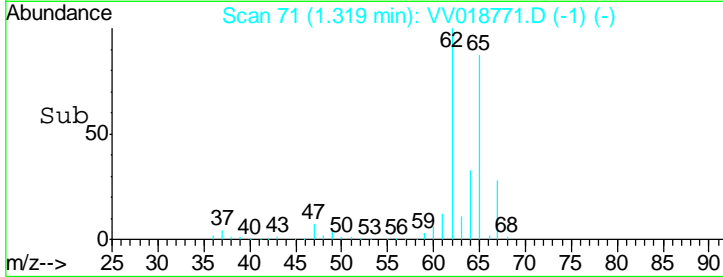
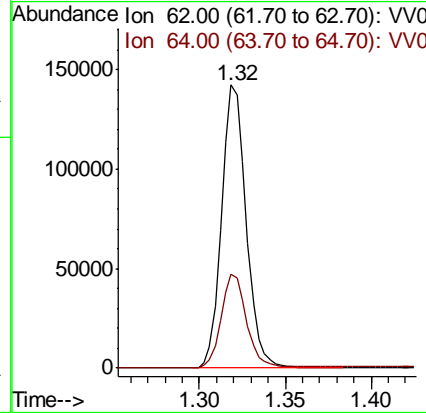
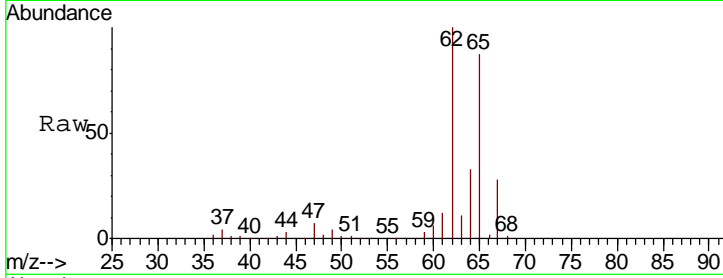




#5
 Vinyl chloride
 Concen: 49.190 ug/L
 RT: 1.32 min Scan# 71
 Delta R.T. -0.00 min
 Lab File: VV018771.D
 Acq: 08 Oct 2020 17:59

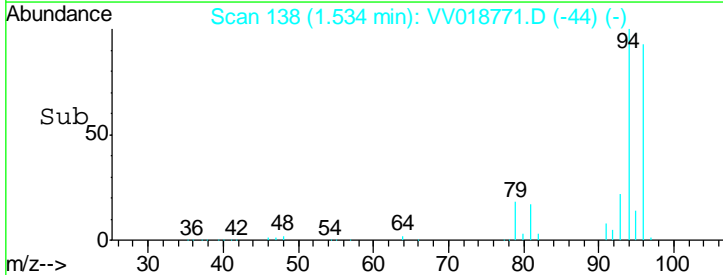
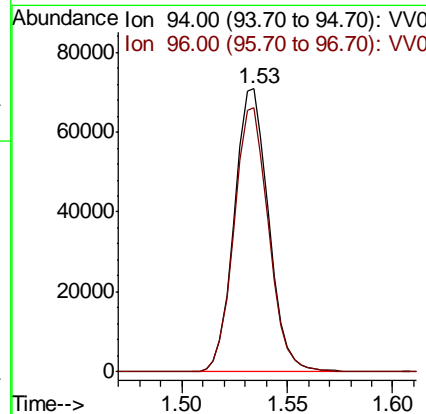
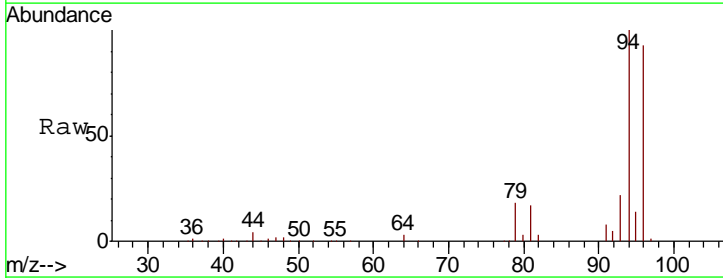
Instrument :
 MSVOA_V
ClientSampled :
 VSTD05079

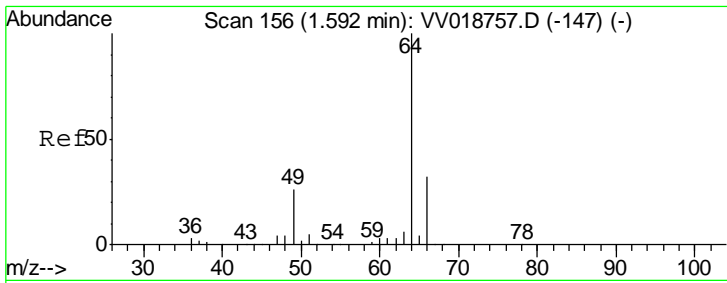
Tgt Ion	Resp	Lower	Upper
62	142375		
64	33.3	22.9	42.5



#6
 Bromomethane
 Concen: 40.601 ug/L
 RT: 1.53 min Scan# 138
 Delta R.T. 0.00 min
 Lab File: VV018771.D
 Acq: 08 Oct 2020 17:59

Tgt Ion	Resp	Lower	Upper
94	79981		
96	93.2	67.5	125.4

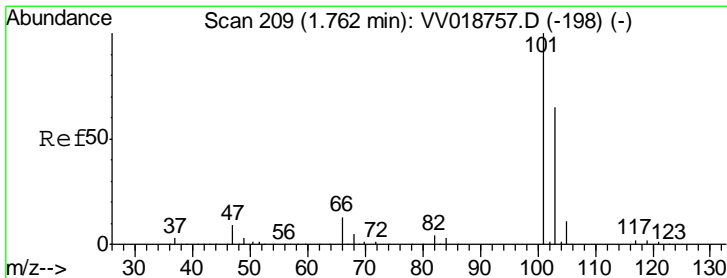
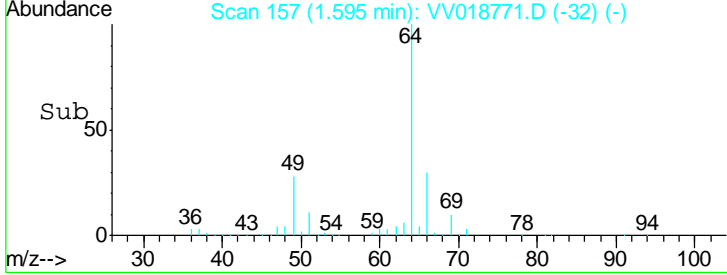
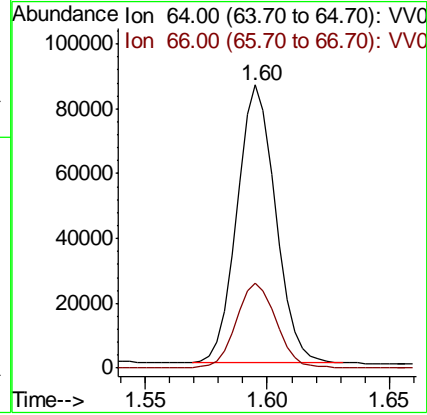
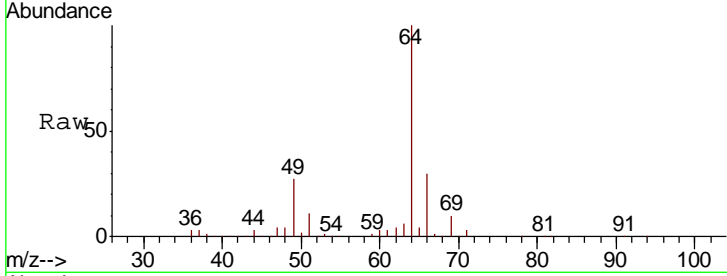




#8
 Chloroethane
 Concen: 52.731 ug/L
 RT: 1.60 min Scan# 157
 Delta R.T. 0.00 min
 Lab File: VV018771.D
 Acq: 08 Oct 2020 17:59

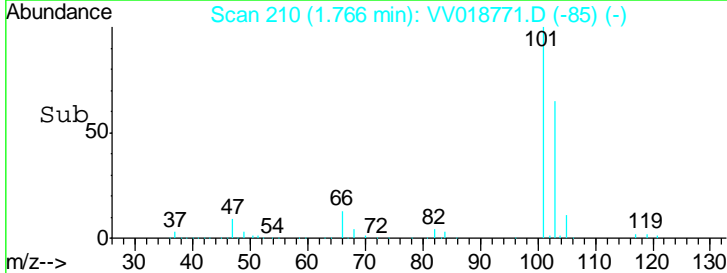
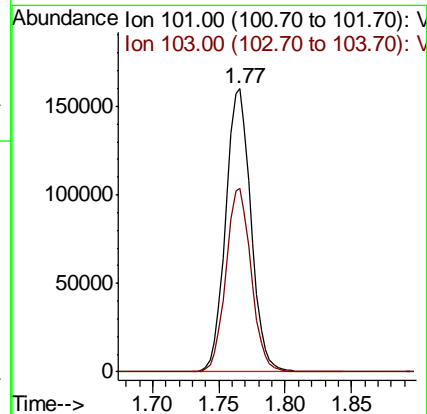
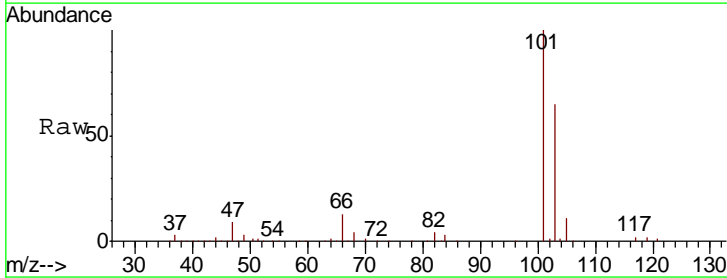
Instrument : MSVOA_V
 ClientSampleID : VSTD05079

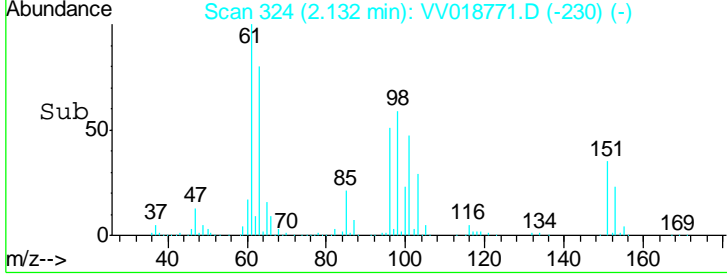
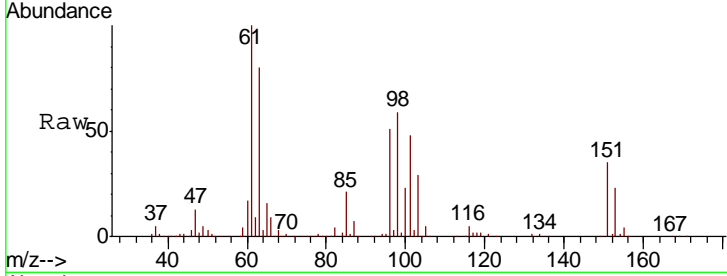
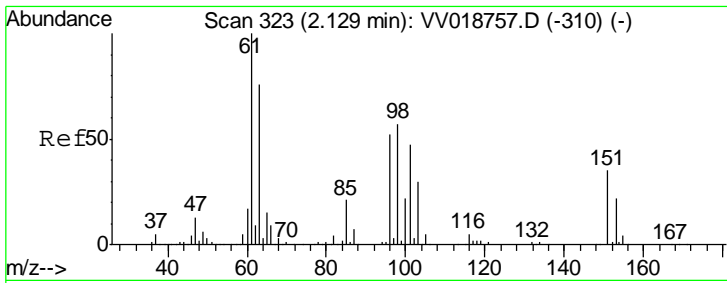
Tgt Ion	Resp	Lower	Upper
64	100		
66	30.0	22.8	42.4



#9
 Trichlorofluoromethane
 Concen: 48.166 ug/L
 RT: 1.77 min Scan# 210
 Delta R.T. 0.00 min
 Lab File: VV018771.D
 Acq: 08 Oct 2020 17:59

Tgt Ion	Resp	Lower	Upper
101	100		
103	64.7	51.9	77.9

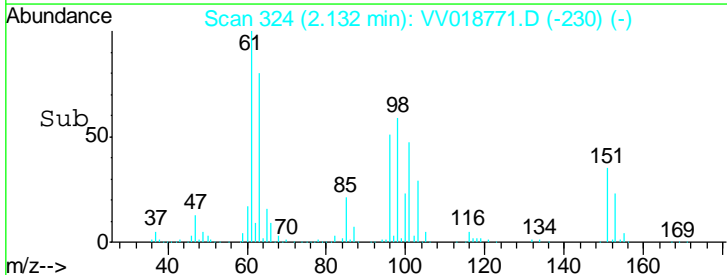
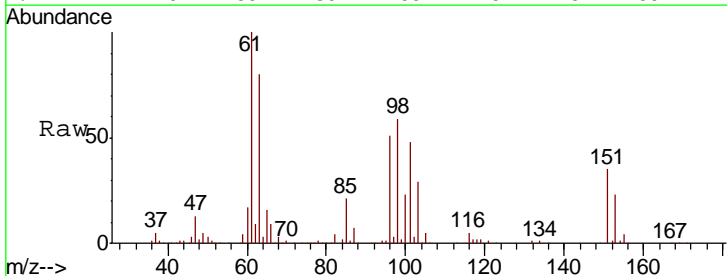
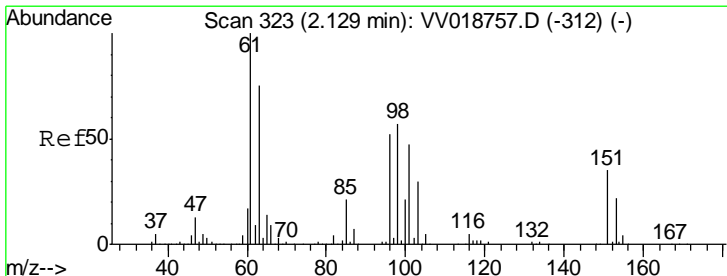
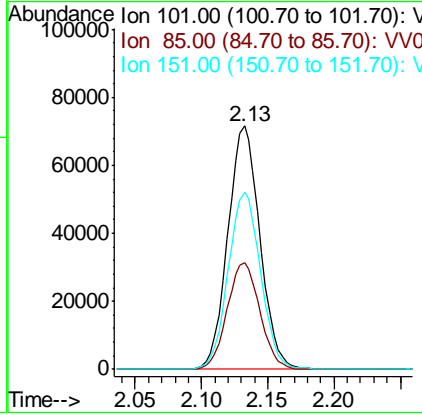




#10
 1,1,2-Trichloro-1,2,2-trifluoroethane
 Concen: 48.842 ug/L
 RT: 2.13 min Scan# 324
 Delta R.T. 0.00 min
 Lab File: VV018771.D
 Acq: 08 Oct 2020 17:59

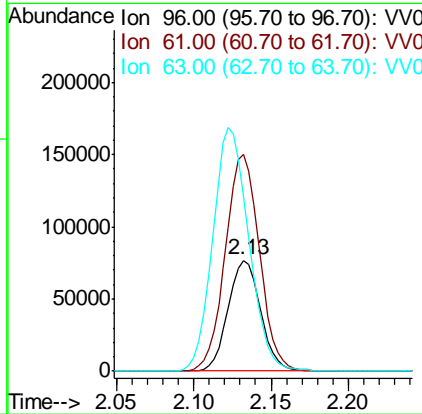
Instrument :
 MSVOA_V
 ClientSampled :
 VSTD05079

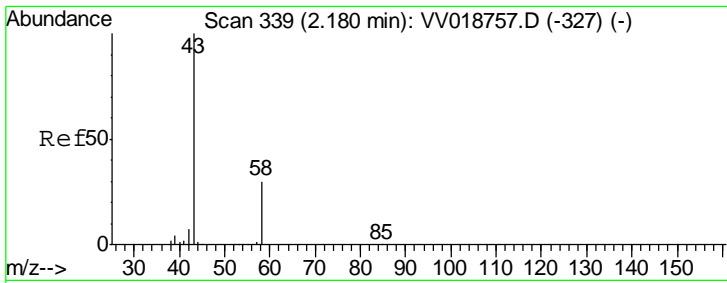
Tgt Ion	Resp	Lower	Upper
101	100		
85	44.7	34.6	52.0
151	73.6	64.3	96.5



#12
 1,1-Dichloroethene
 Concen: 47.271 ug/L
 RT: 2.13 min Scan# 324
 Delta R.T. 0.00 min
 Lab File: VV018771.D
 Acq: 08 Oct 2020 17:59

Tgt Ion	Resp	Lower	Upper
96	100		
61	196.1	122.8	228.1
63	157.2	91.9	170.7

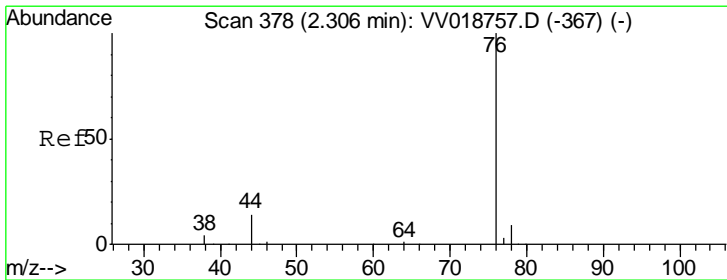
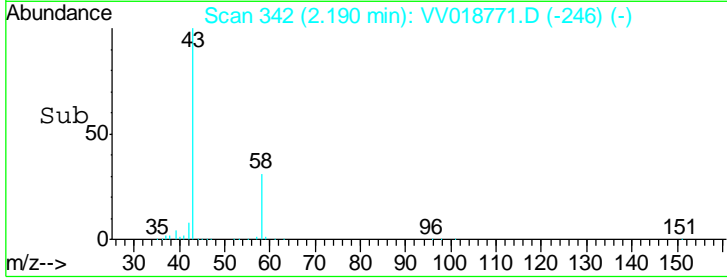
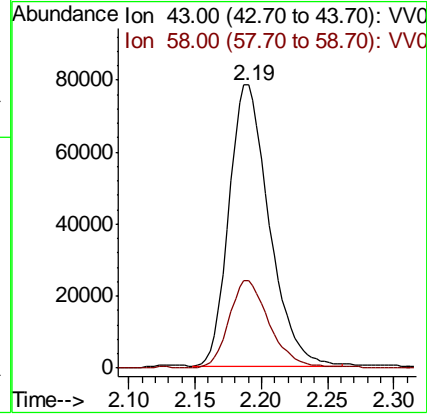
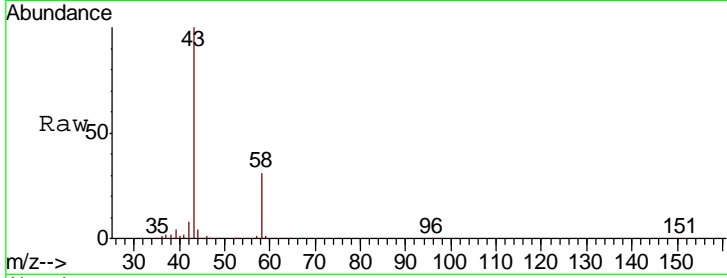




#13
 Acetone
 Concen: 115.018 ug/L
 RT: 2.19 min Scan# 342
 Delta R.T. 0.01 min
 Lab File: VV018771.D
 Acq: 08 Oct 2020 17:59

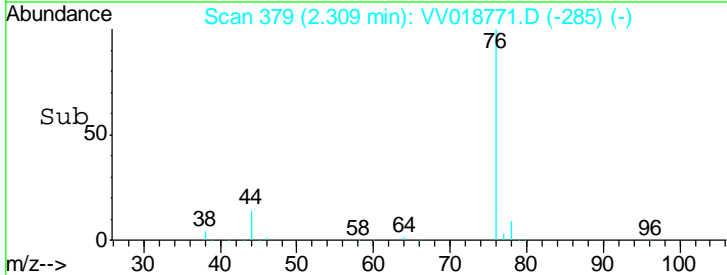
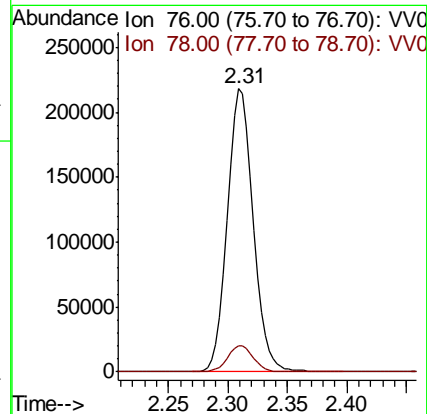
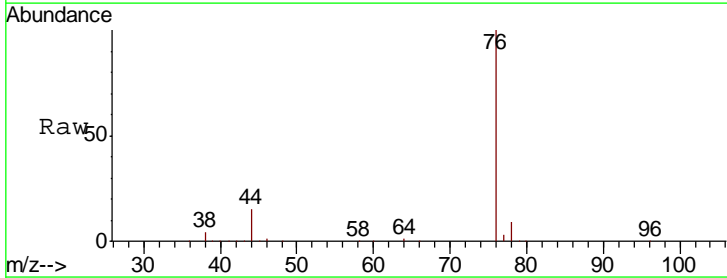
Instrument : MSVOA_V
 ClientSampled : VSTD05079

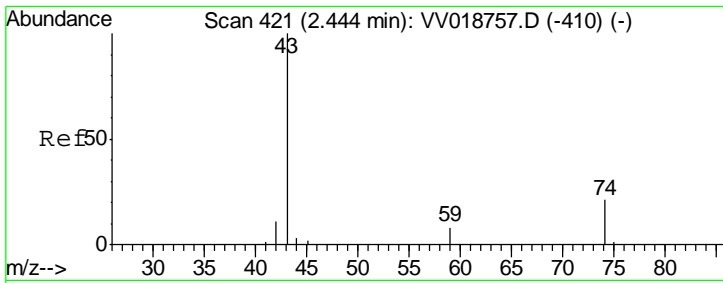
Tgt Ion	Resp	Lower	Upper
43	164487		
58	31.7	0.0	64.0



#14
 Carbon disulfide
 Concen: 43.022 ug/L
 RT: 2.31 min Scan# 379
 Delta R.T. 0.00 min
 Lab File: VV018771.D
 Acq: 08 Oct 2020 17:59

Tgt Ion	Resp	Lower	Upper
76	329189		
78	9.2	7.1	10.7

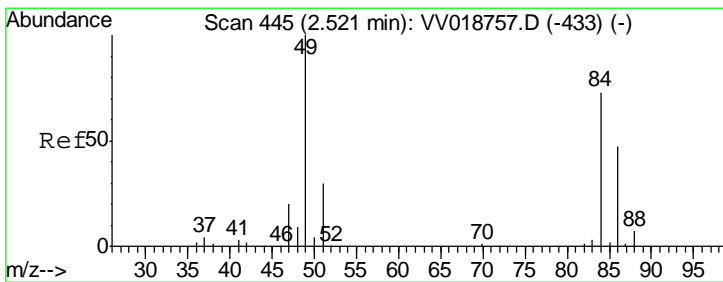
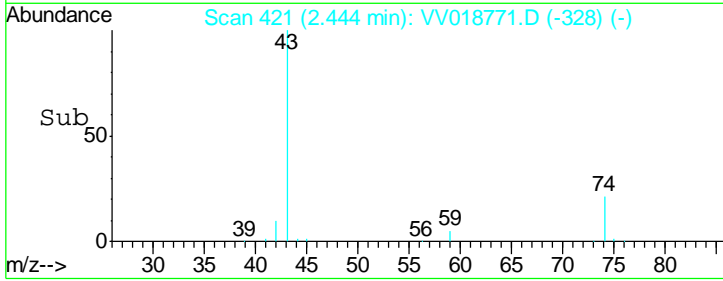
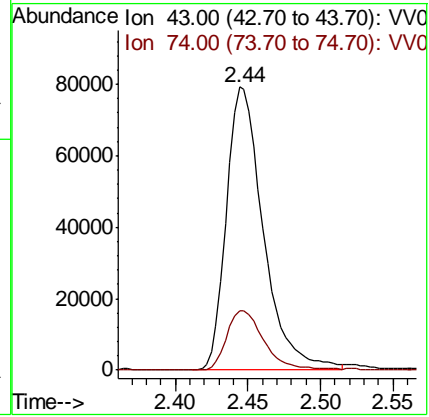
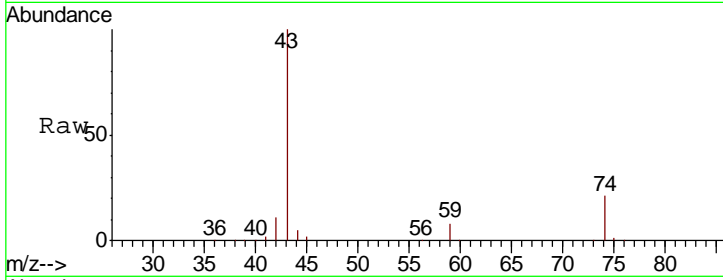




#15
 Methyl Acetate
 Concen: 50.455 ug/L
 RT: 2.44 min Scan# 421
 Delta R.T. -0.00 min
 Lab File: VV018771.D
 Acq: 08 Oct 2020 17:59

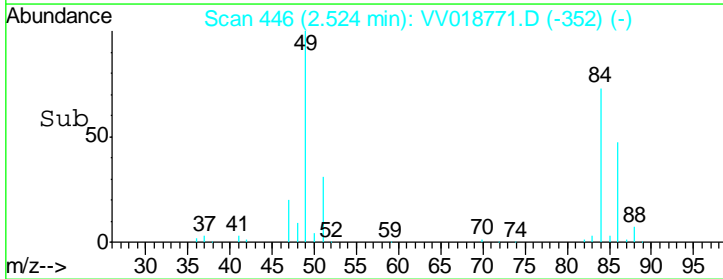
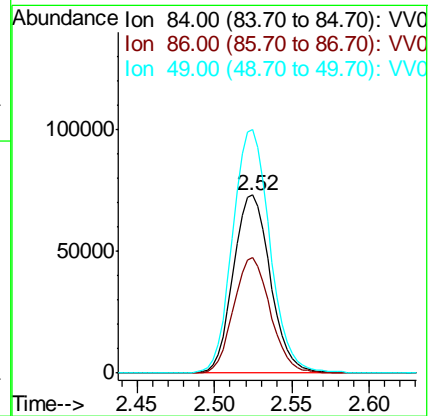
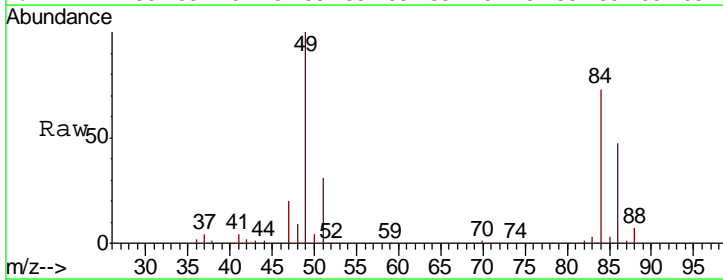
Instrument :
 MSVOA_V
ClientSampled :
 VSTD05079

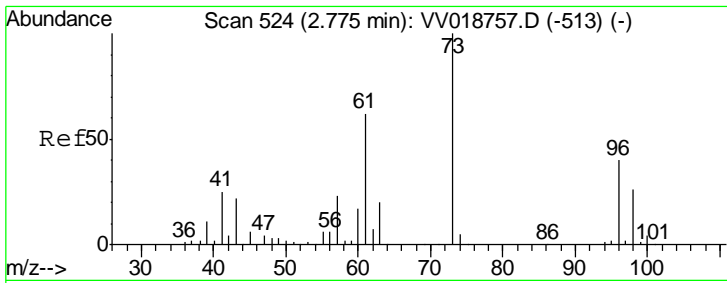
Tgt Ion	Resp	Lower	Upper
43	139011		
74	21.3	19.2	28.8



#16
 Methylene chloride
 Concen: 42.971 ug/L
 RT: 2.52 min Scan# 446
 Delta R.T. 0.00 min
 Lab File: VV018771.D
 Acq: 08 Oct 2020 17:59

Tgt Ion	Resp	Lower	Upper
84	121821		
86	64.8	46.2	85.8
49	136.6	86.6	160.8

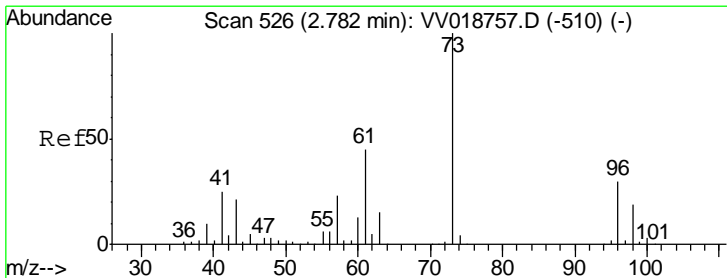
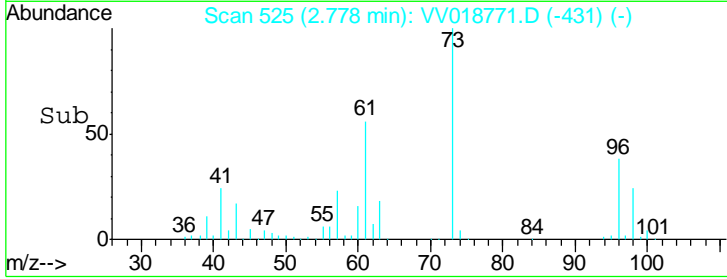
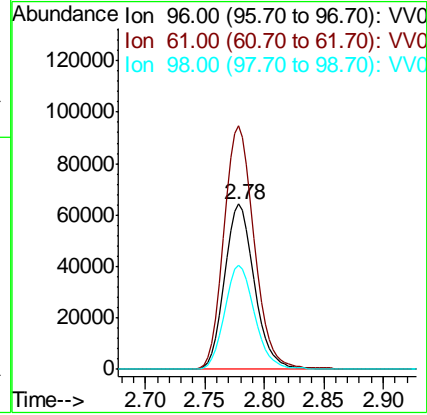
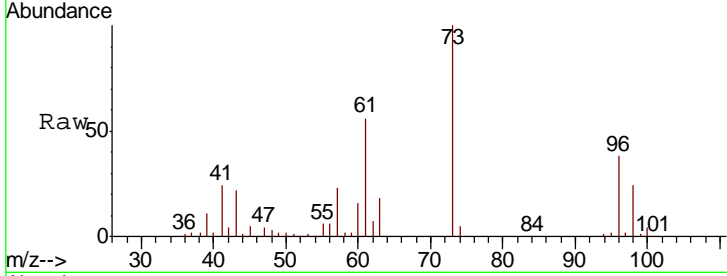




#17
 trans-1,2-Dichloroethene
 Concen: 41.345 ug/L
 RT: 2.78 min Scan# 525
 Delta R.T. 0.00 min
 Lab File: VV018771.D
 Acq: 08 Oct 2020 17:59

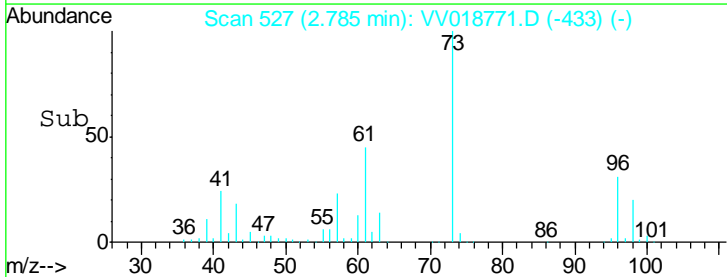
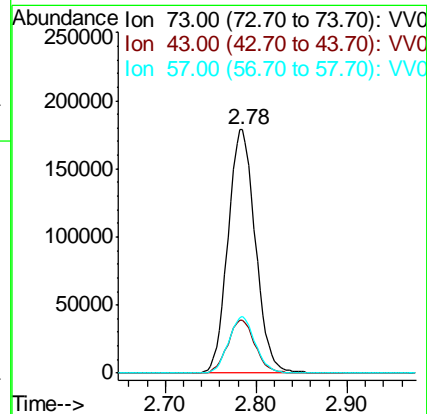
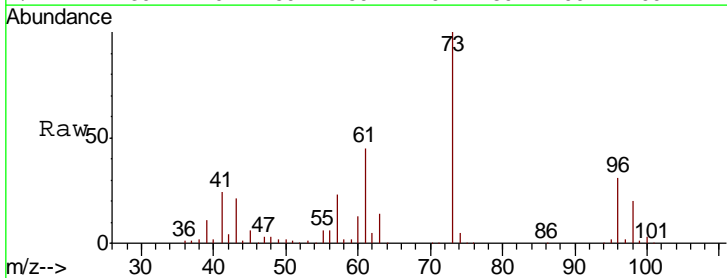
Instrument :
 MSVOA_V
ClientSampled :
 VSTD05079

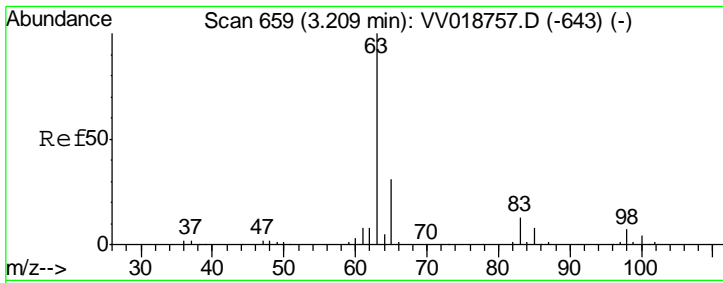
Tgt Ion	Resp	Lower	Upper
96	111747		
Ion Ratio			
96	100		
61	147.6	95.0	176.4
98	63.2	44.6	82.8



#18
 Methyl tert-butyl Ether
 Concen: 45.328 ug/L
 RT: 2.78 min Scan# 527
 Delta R.T. 0.00 min
 Lab File: VV018771.D
 Acq: 08 Oct 2020 17:59

Tgt Ion	Resp	Lower	Upper
73	373271		
Ion Ratio			
73	100		
43	21.4	15.9	23.9
57	22.7	17.5	26.3

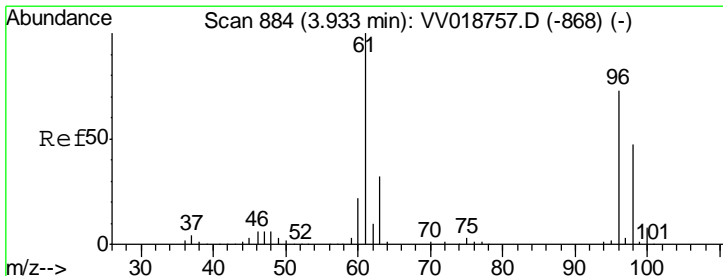
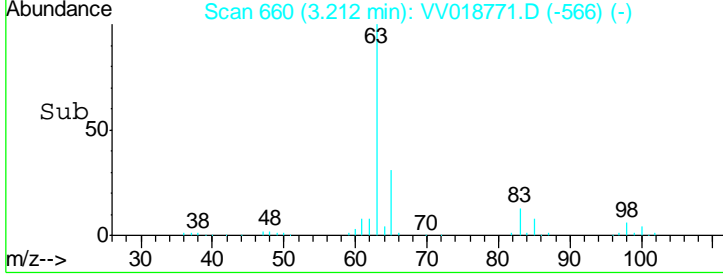
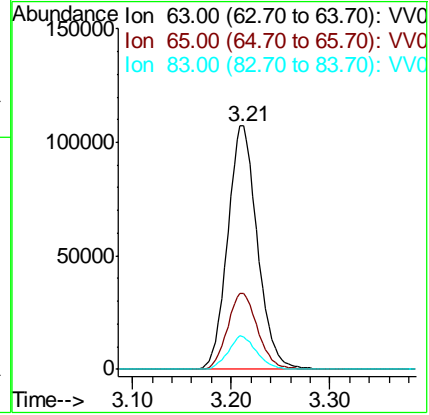
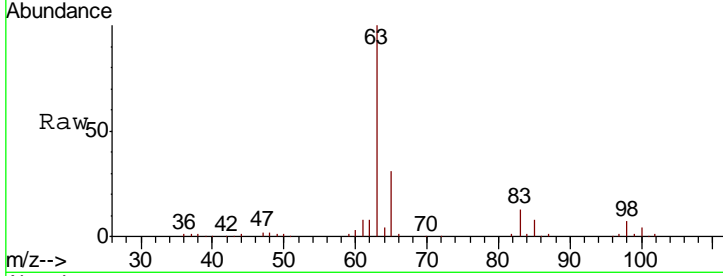




#19
 1,1-Dichloroethane
 Concen: 47.806 ug/L
 RT: 3.21 min Scan# 660
 Delta R.T. 0.00 min
 Lab File: VV018771.D
 Acq: 08 Oct 2020 17:59

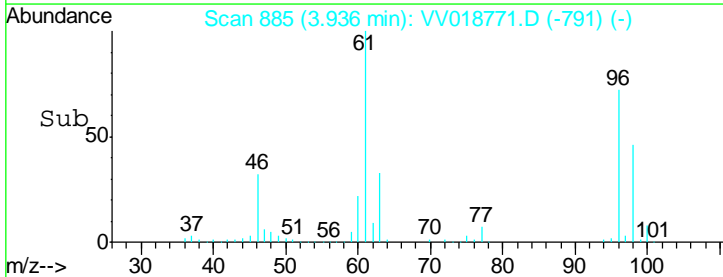
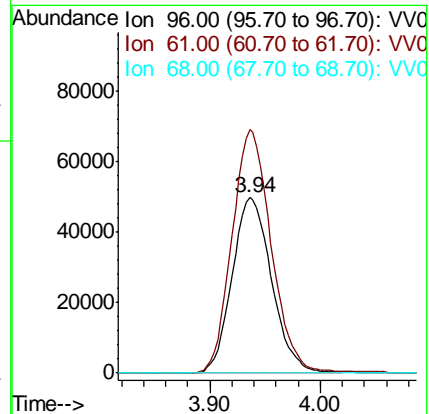
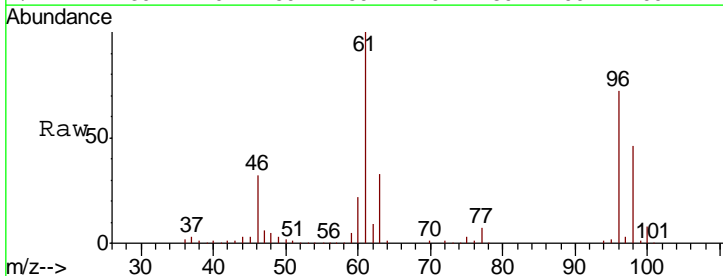
Instrument : MSVOA_V
 ClientSampled : VSTD05079

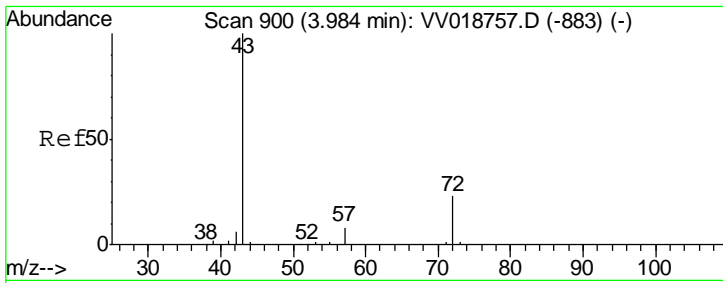
Tgt Ion	Resp	Lower	Upper
63	100		
65	31.1	22.3	41.3
83	13.4	9.3	17.3



#20
 cis-1,2-Dichloroethene
 Concen: 43.028 ug/L
 RT: 3.94 min Scan# 885
 Delta R.T. 0.00 min
 Lab File: VV018771.D
 Acq: 08 Oct 2020 17:59

Tgt Ion	Resp	Lower	Upper
96	100		
61	138.8	86.8	161.2
68	0.0	0.0	0.0

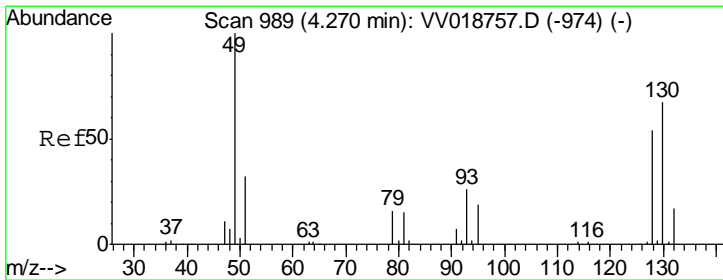
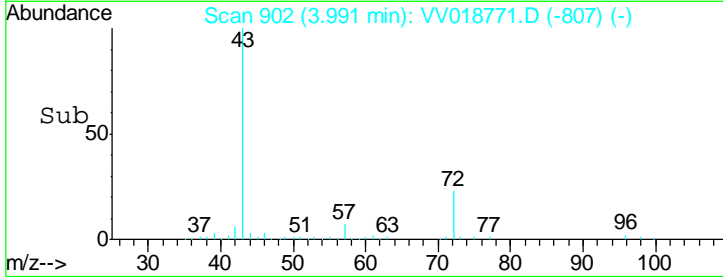
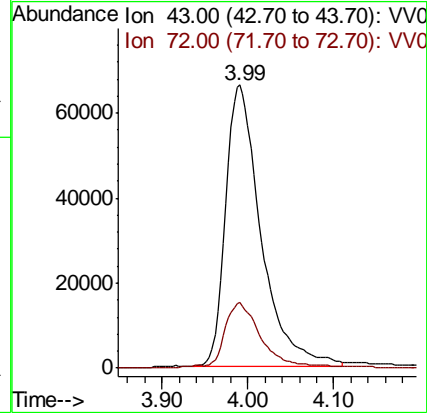
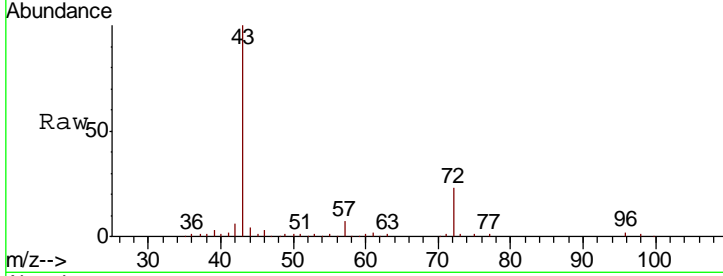




#22
 2-Butanone
 Concen: 104.697 ug/L
 RT: 3.99 min Scan# 902
 Delta R.T. 0.01 min
 Lab File: VV018771.D
 Acq: 08 Oct 2020 17:59

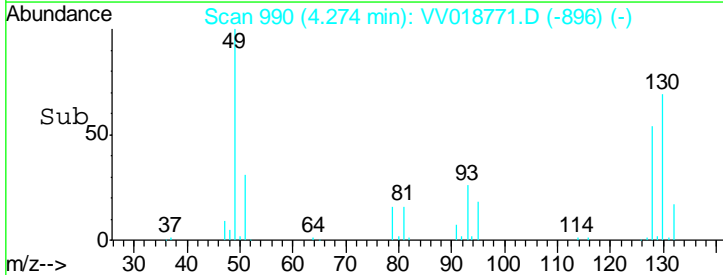
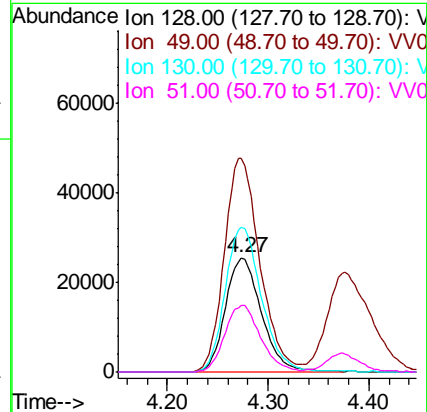
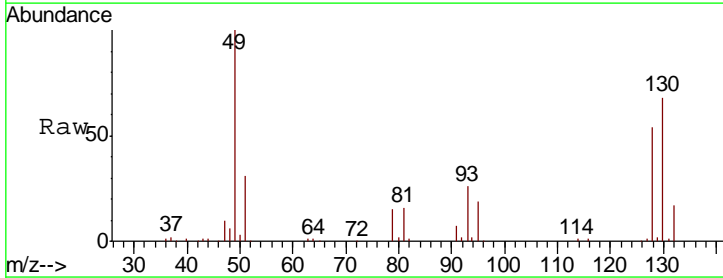
Instrument :
 MSVOA_V
 ClientSampled :
 VSTD05079

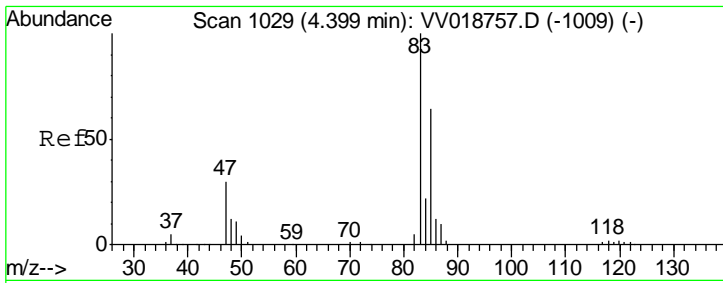
Tgt Ion	Resp	Lower	Upper
43	189144		
72	22.0	12.1	36.3



#23
 Bromochloromethane
 Concen: 40.292 ug/L
 RT: 4.27 min Scan# 990
 Delta R.T. 0.00 min
 Lab File: VV018771.D
 Acq: 08 Oct 2020 17:59

Tgt Ion	Resp	Lower	Upper
128	63643		
49	186.6	105.1	195.1
130	127.0	90.0	167.2
51	57.8	38.6	57.8

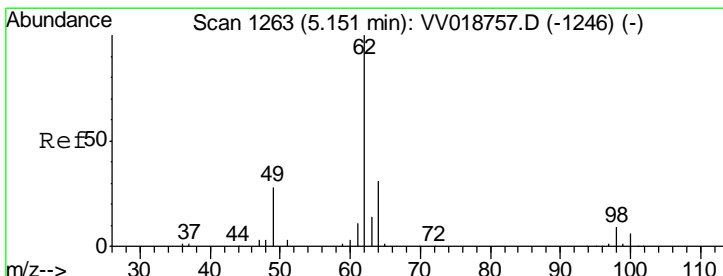
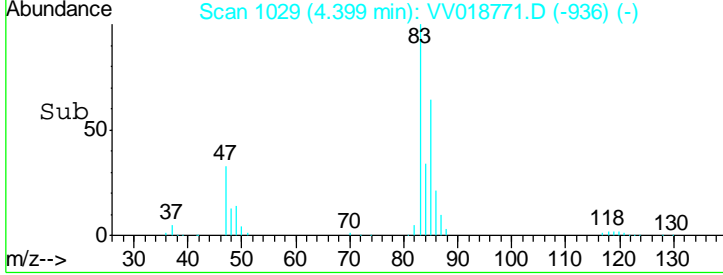
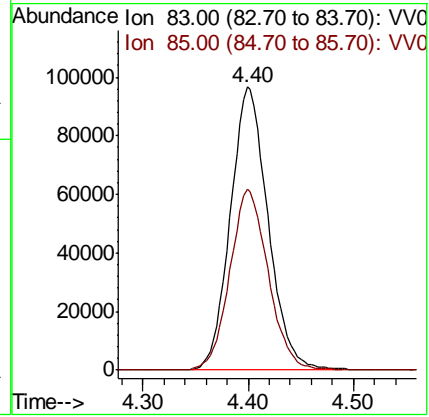
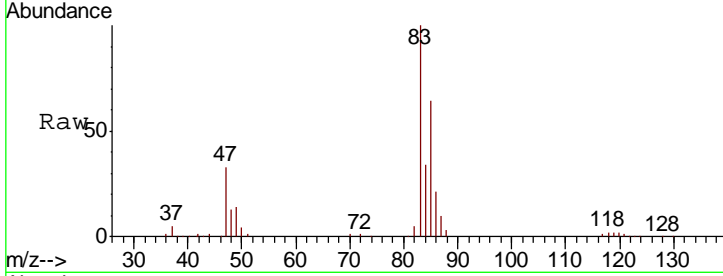




#25
 Chloroform
 Concen: 47.906 ug/L
 RT: 4.40 min Scan# 1029
 Delta R.T. -0.00 min
 Lab File: VV018771.D
 Acq: 08 Oct 2020 17:59

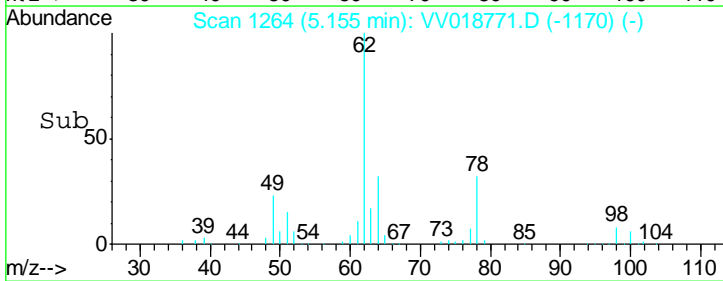
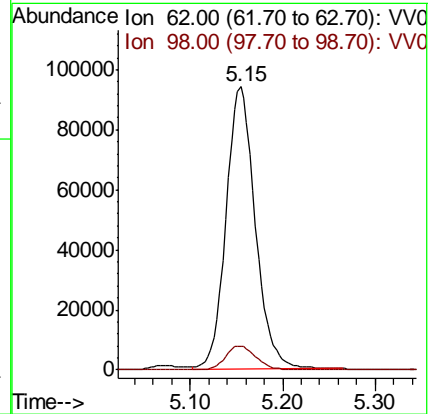
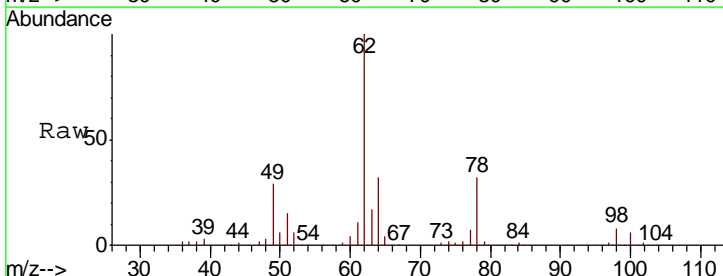
Instrument : MSVOA_V
 ClientSampled : VSTD05079

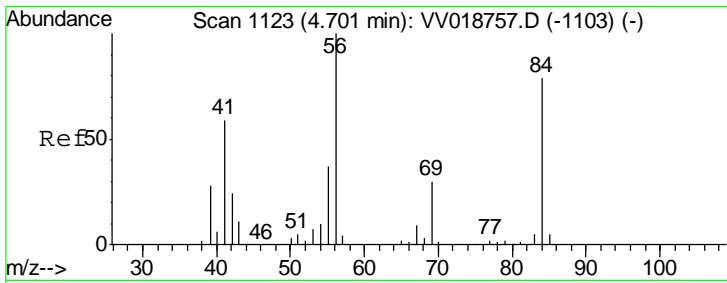
Tgt Ion	Resp	Lower	Upper
83	100		
85	64.0	46.2	85.8



#27
 1,2-Dichloroethane
 Concen: 52.914 ug/L
 RT: 5.15 min Scan# 1264
 Delta R.T. 0.00 min
 Lab File: VV018771.D
 Acq: 08 Oct 2020 17:59

Tgt Ion	Resp	Lower	Upper
62	100		
98	8.4	7.7	11.5

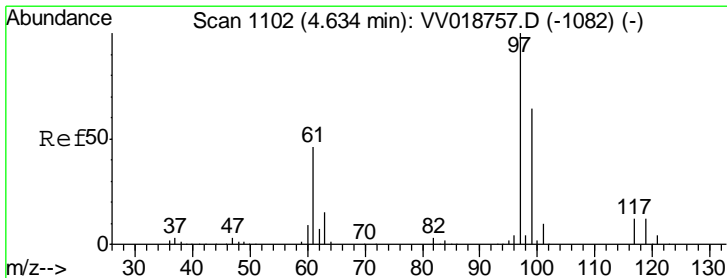
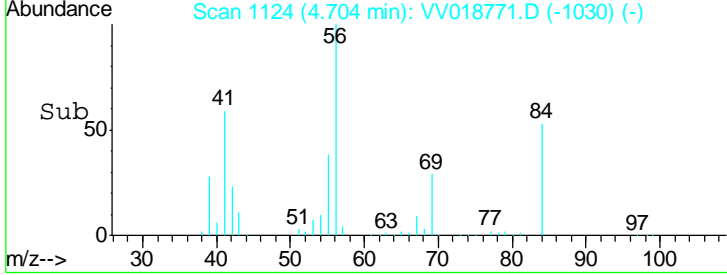
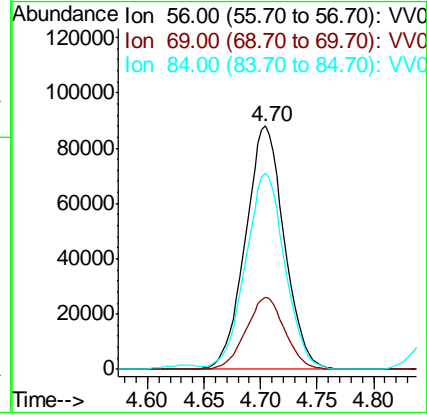
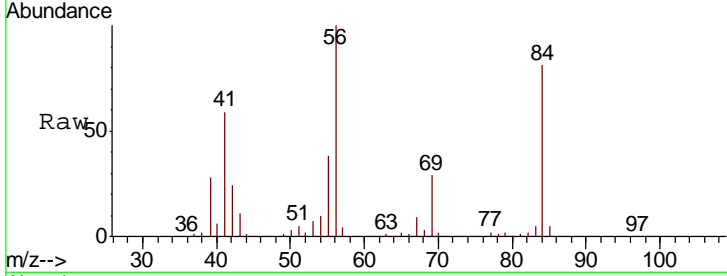




#29
 Cyclohexane
 Concen: 54.403 ug/L
 RT: 4.70 min Scan# 1124
 Delta R.T. 0.00 min
 Lab File: VV018771.D
 Acq: 08 Oct 2020 17:59

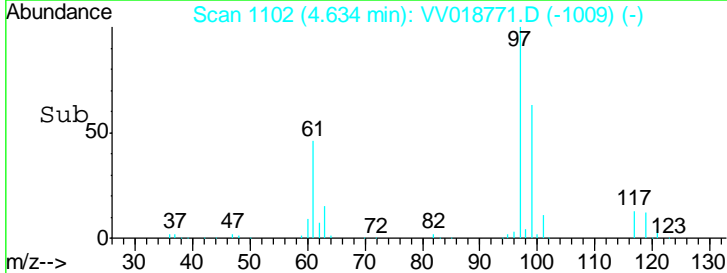
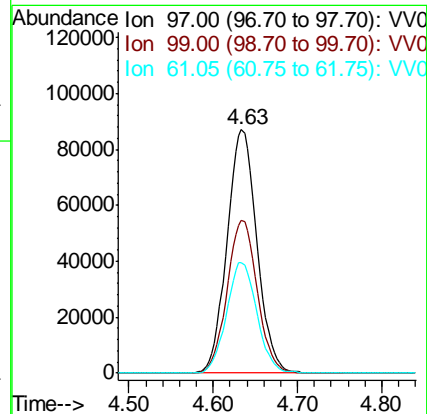
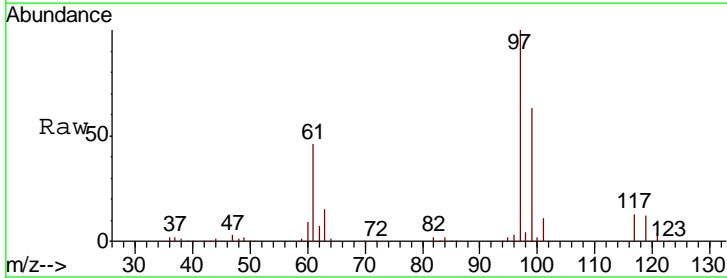
Instrument : MSVOA_V
 ClientSampled : VSTD05079

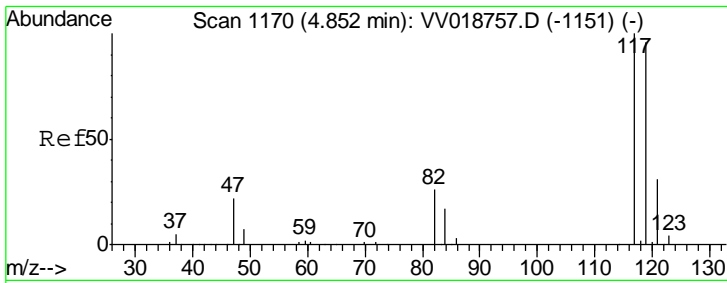
Tgt Ion	Resp	Lower	Upper
56	210372		
69	29.5	24.8	37.2
84	81.5	72.2	108.4



#30
 1,1,1-Trichloroethane
 Concen: 50.921 ug/L
 RT: 4.63 min Scan# 1102
 Delta R.T. -0.00 min
 Lab File: VV018771.D
 Acq: 08 Oct 2020 17:59

Tgt Ion	Resp	Lower	Upper
97	214330		
99	63.4	51.4	77.0
61	45.9	33.9	50.9

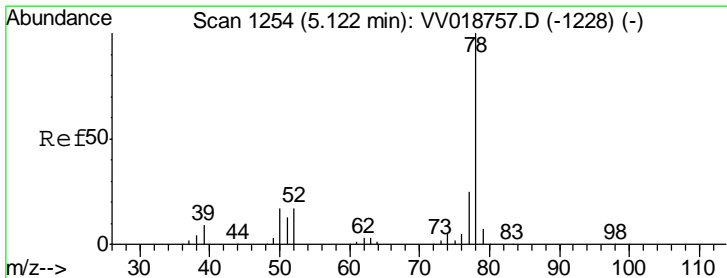
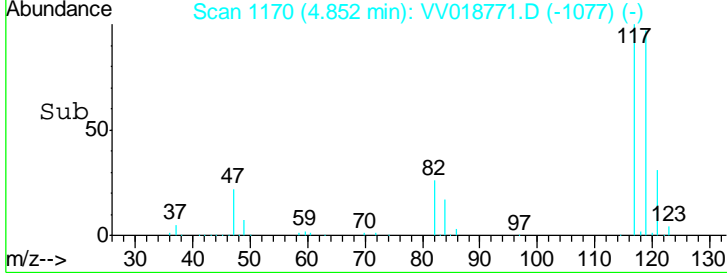
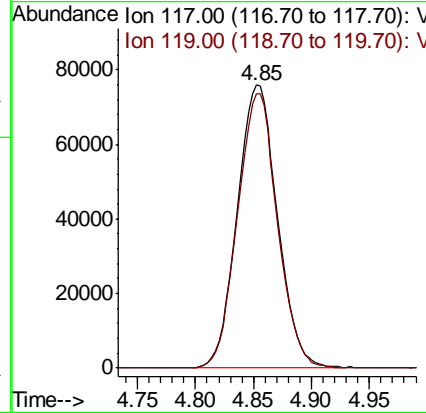
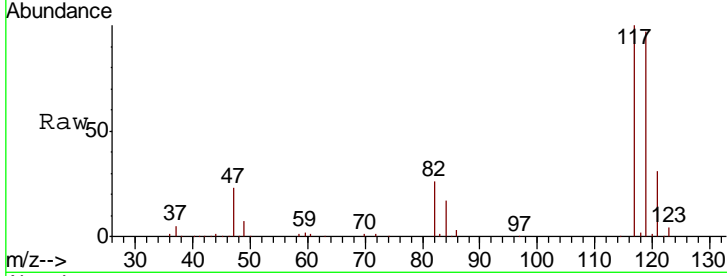




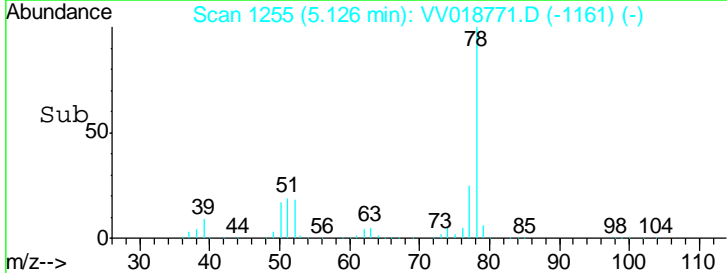
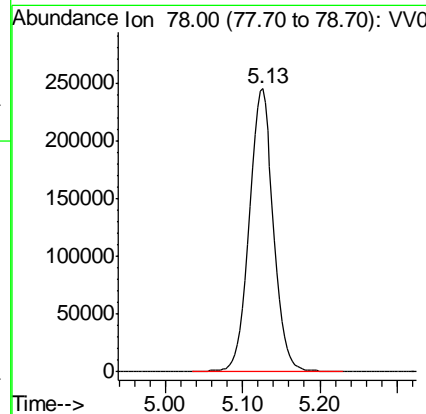
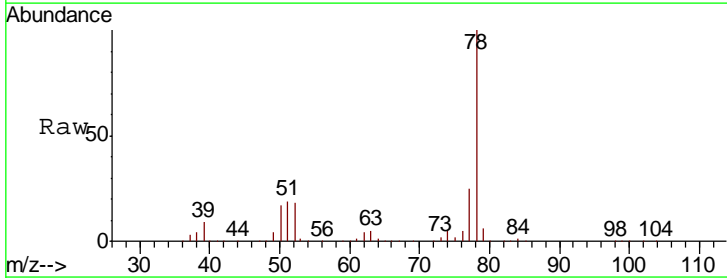
#31
 Carbon tetrachloride
 Concen: 48.240 ug/L
 RT: 4.85 min Scan# 1170
 Delta R.T. -0.00 min
 Lab File: VV018771.D
 Acq: 08 Oct 2020 17:59

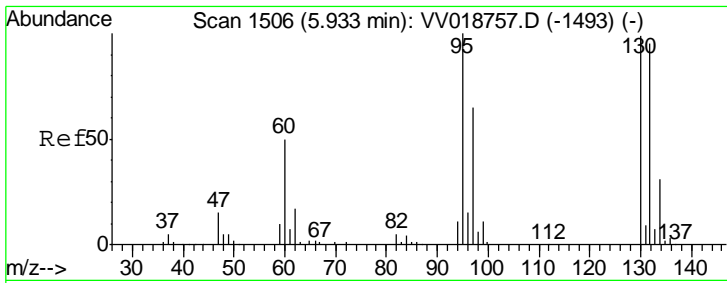
Instrument : MSVOA_V
 ClientSampled : VSTD05079

Tgt Ion: 117 Resp: 182229
 Ion Ratio Lower Upper
 117 100
 119 96.5 77.0 115.6



#33
 Benzene
 Concen: 53.619 ug/L
 RT: 5.13 min Scan# 1255
 Delta R.T. 0.00 min
 Lab File: VV018771.D
 Acq: 08 Oct 2020 17:59
 Tgt Ion: 78 Resp: 534082

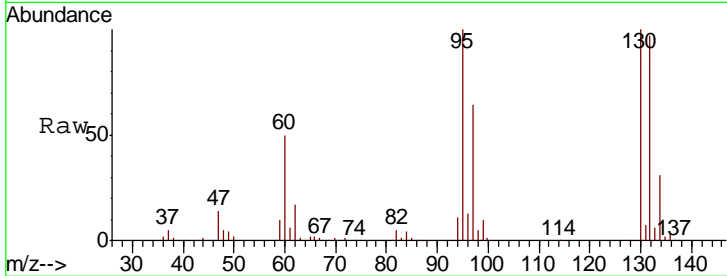




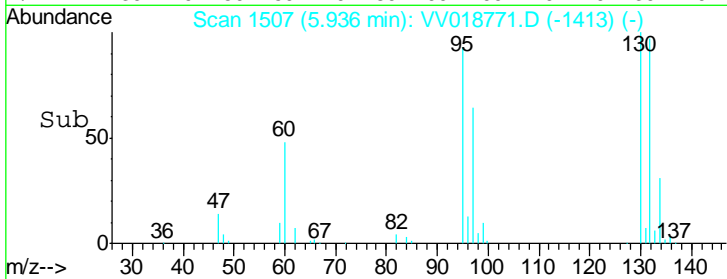
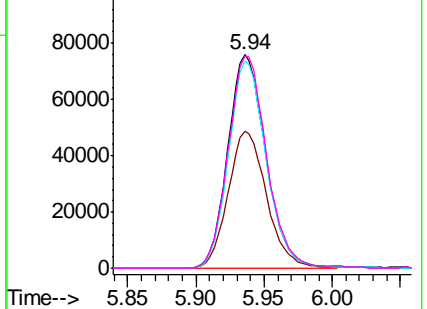
#34
 Trichloroethene
 Concen: 50.773 ug/L
 RT: 5.94 min Scan# 1507
 Delta R.T. 0.00 min
 Lab File: VV018771.D
 Acq: 08 Oct 2020 17:59

Instrument : MSVOA_V
 ClientSampled : VSTD05079

Tgt Ion	Resp	Lower	Upper
95	146821		
97	64.3	45.9	85.3
132	97.0	70.8	131.4
130	99.7	75.3	139.8

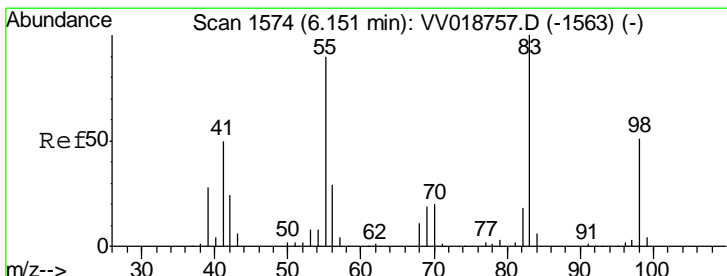


Abundance Ion 95.00 (94.70 to 95.70): VV018771.D (-1413) (-)
 Ion 97.00 (96.70 to 97.70): VV018771.D (-1413) (-)
 Ion 132.00 (131.70 to 132.70): VV018771.D (-1413) (-)
 Ion 130.00 (129.70 to 130.70): VV018771.D (-1413) (-)

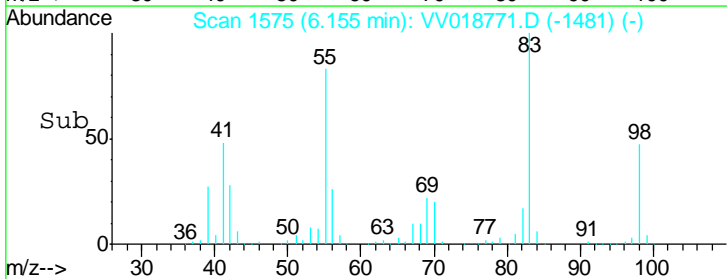
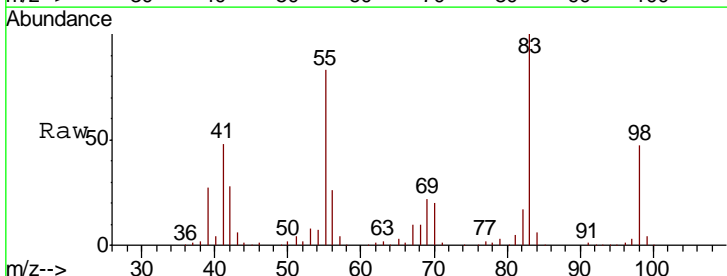
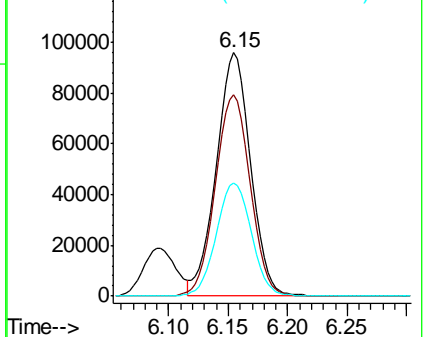


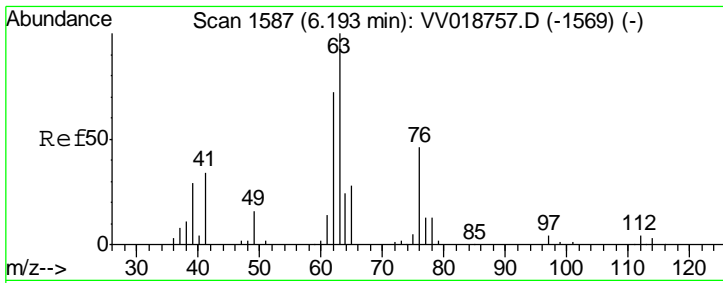
#35
 Methylcyclohexane
 Concen: 49.020 ug/L
 RT: 6.15 min Scan# 1575
 Delta R.T. 0.00 min
 Lab File: VV018771.D
 Acq: 08 Oct 2020 17:59

Tgt Ion	Resp	Lower	Upper
83	191224		
55	83.9	60.1	90.1
98	47.8	40.2	60.4



Abundance Ion 83.00 (82.70 to 83.70): VV018771.D (-1481) (-)
 Ion 55.00 (54.70 to 55.70): VV018771.D (-1481) (-)
 Ion 98.00 (97.70 to 98.70): VV018771.D (-1481) (-)

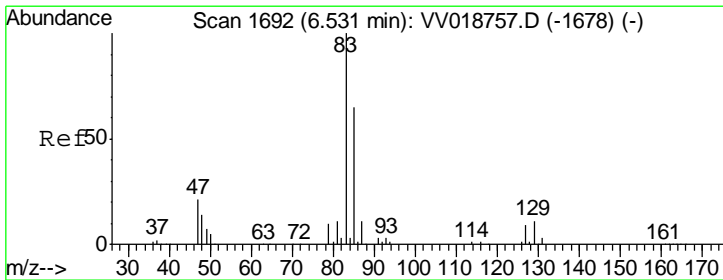
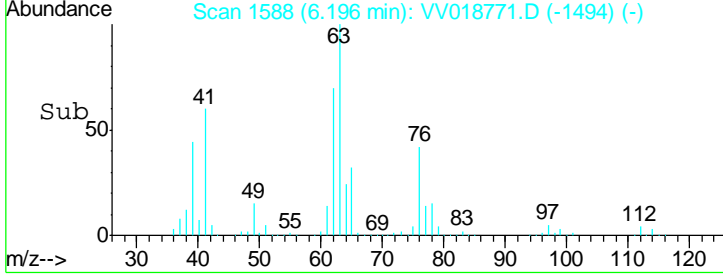
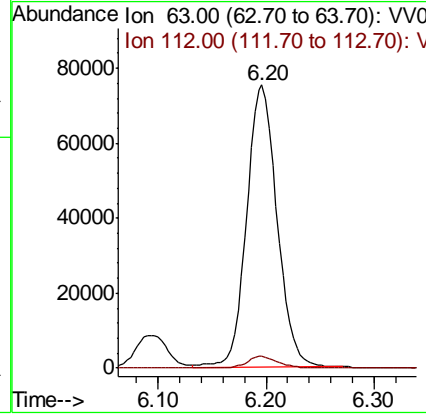
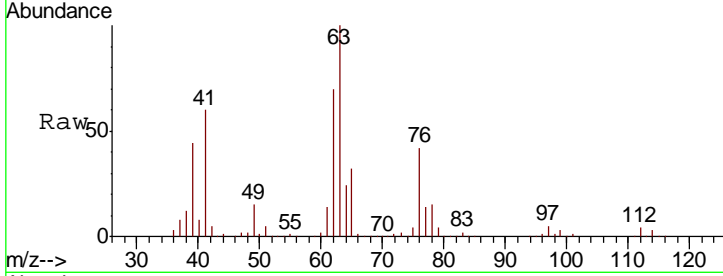




#37
 1,2-Dichloropropane
 Concen: 57.993 ug/L
 RT: 6.20 min Scan# 1588
 Delta R.T. 0.00 min
 Lab File: VV018771.D
 Acq: 08 Oct 2020 17:59

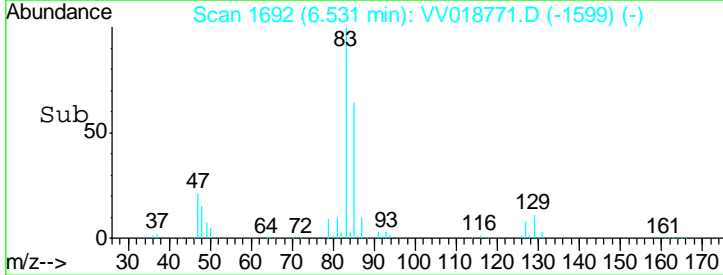
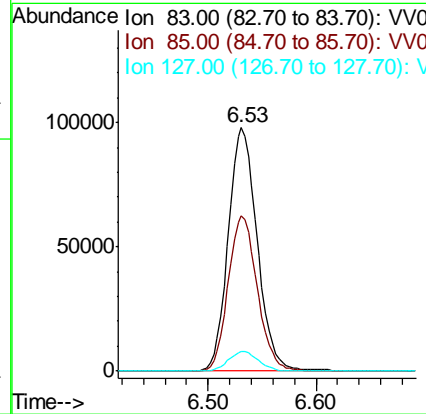
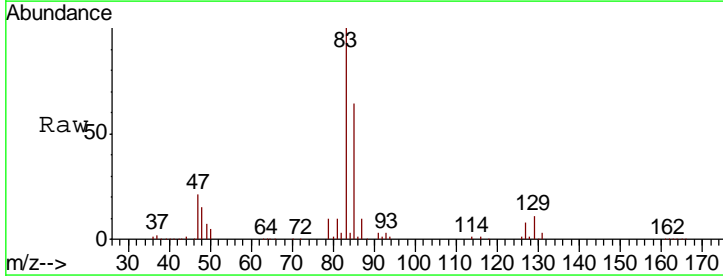
Instrument :
 MSVOA_V
 ClientSampled :
 VSTD05079

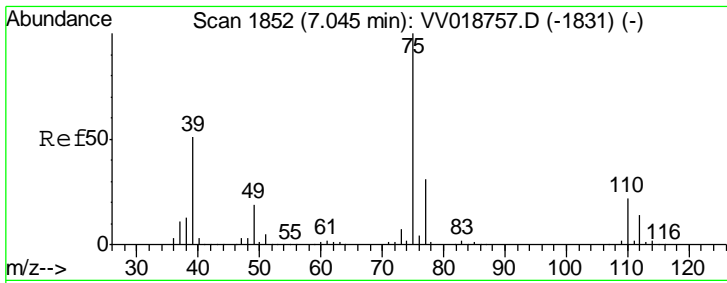
Tgt Ion	Resp	Lower	Upper
63	148202		
112	4.4	3.9	5.9



#38
 Bromodichloromethane
 Concen: 53.439 ug/L
 RT: 6.53 min Scan# 1692
 Delta R.T. -0.00 min
 Lab File: VV018771.D
 Acq: 08 Oct 2020 17:59

Tgt Ion	Resp	Lower	Upper
83	182891		
85	63.8	44.5	82.7
127	8.2	7.2	10.8

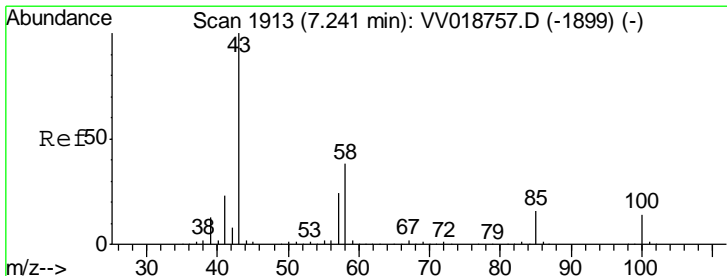
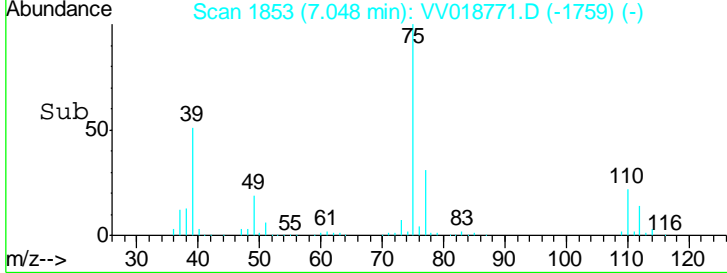
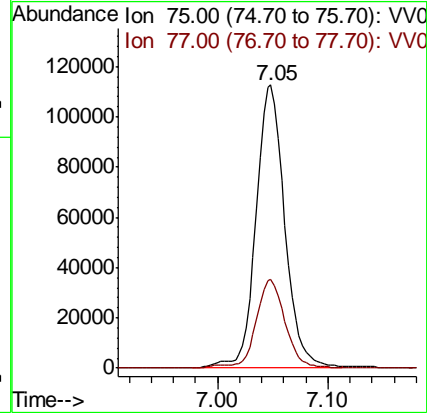
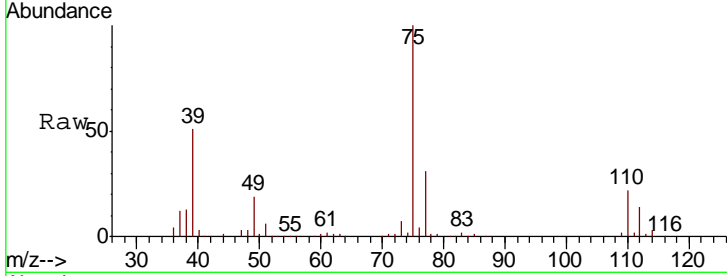




#39
 cis-1,3-Dichloropropene
 Concen: 51.055 ug/L
 RT: 7.05 min Scan# 1853
 Delta R.T. 0.00 min
 Lab File: VV018771.D
 Acq: 08 Oct 2020 17:59

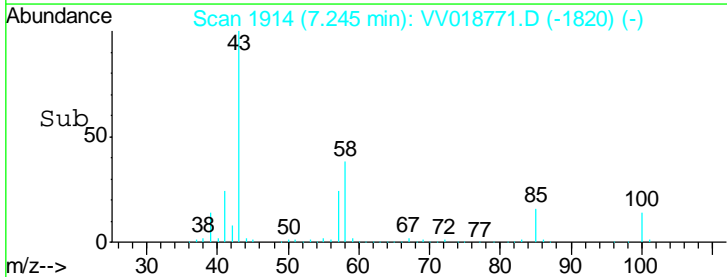
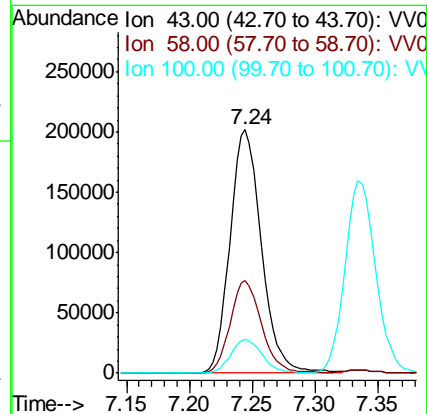
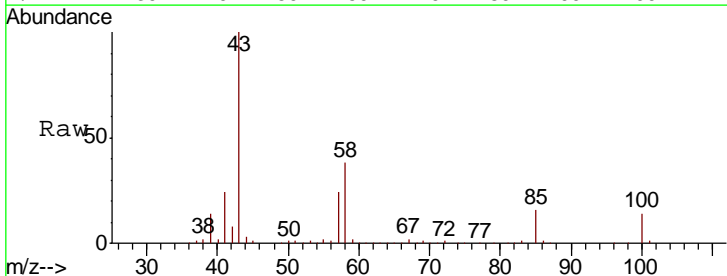
Instrument :
 MSVOA_V
ClientSampled :
 VSTD05079

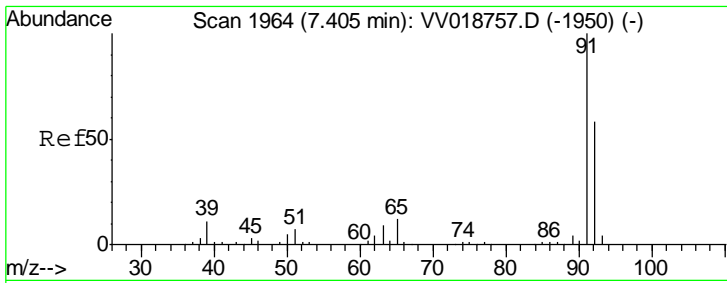
Tgt Ion: 75 Resp: 204705
 Ion Ratio Lower Upper
 75 100
 77 31.3 23.0 42.6



#40
 4-Methyl-2-pentanone
 Concen: 106.658 ug/L
 RT: 7.24 min Scan# 1914
 Delta R.T. 0.00 min
 Lab File: VV018771.D
 Acq: 08 Oct 2020 17:59

Tgt Ion: 43 Resp: 351712
 Ion Ratio Lower Upper
 43 100
 58 37.9 31.8 47.6
 100 13.9 13.4 20.0

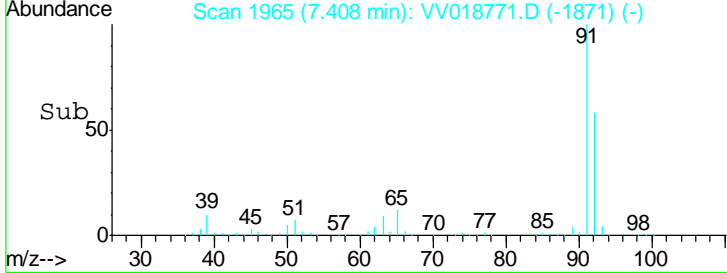
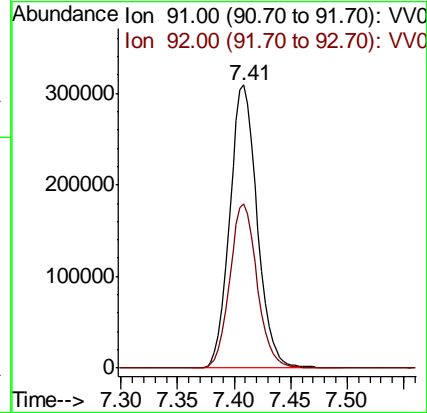
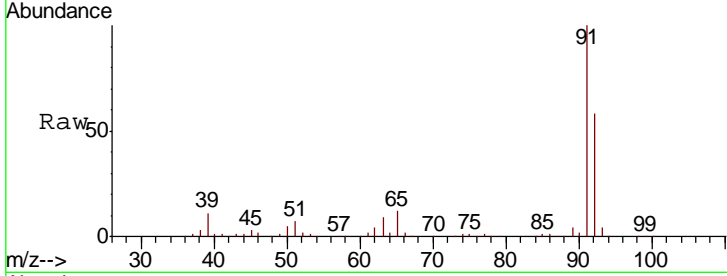




#42
 Toluene
 Concen: 48.456 ug/L
 RT: 7.41 min Scan# 1965
 Delta R.T. 0.00 min
 Lab File: VV018771.D
 Acq: 08 Oct 2020 17:59

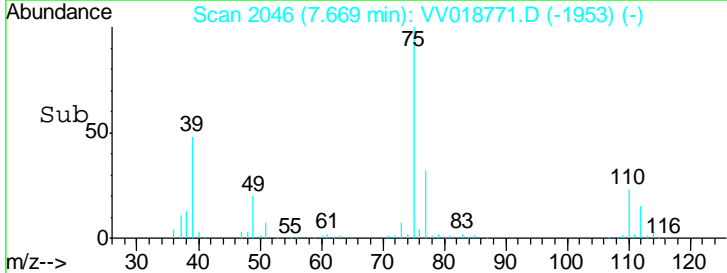
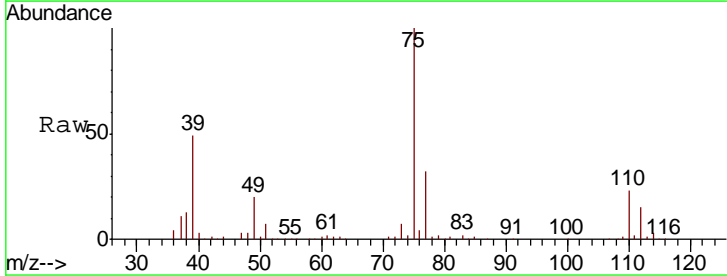
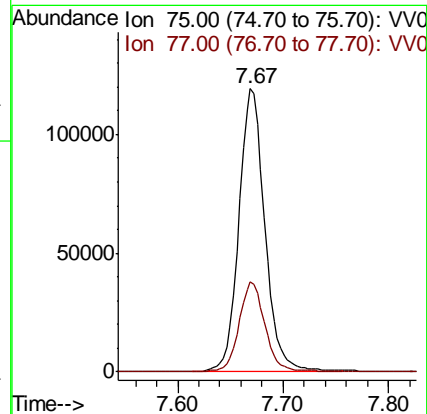
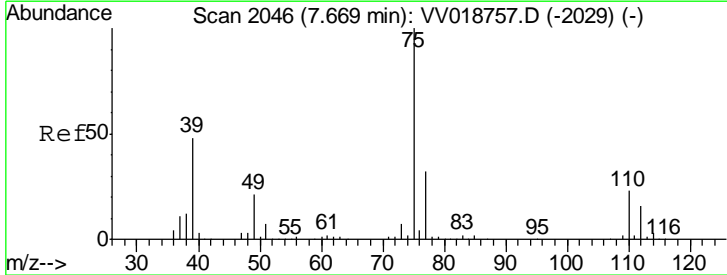
Instrument :
 MSVOA_V
 ClientSampled :
 VSTD05079

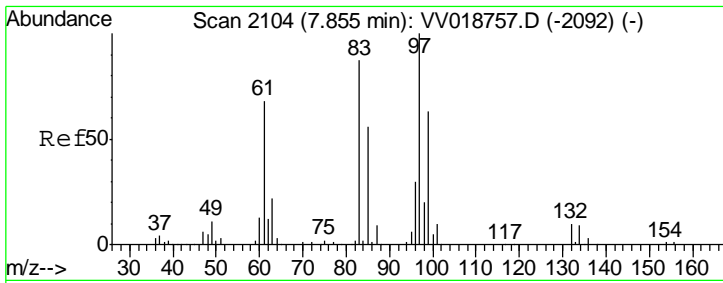
Tot Ion: 91 Resp: 522126
 Ion Ratio Lower Upper
 91 100
 92 58.1 41.6 77.3



#44
 trans-1,3-Dichloropropene
 Concen: 51.804 ug/L
 RT: 7.67 min Scan# 2046
 Delta R.T. -0.00 min
 Lab File: VV018771.D
 Acq: 08 Oct 2020 17:59

Tgt Ion: 75 Resp: 204035
 Ion Ratio Lower Upper
 75 100
 77 31.8 22.7 42.1

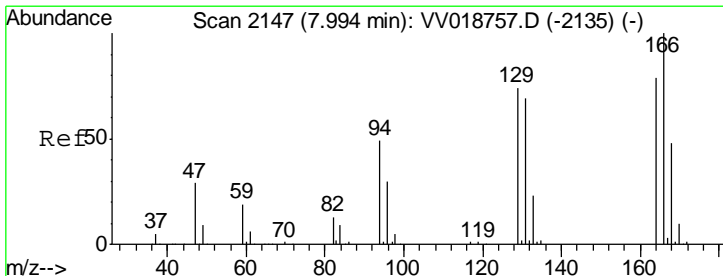
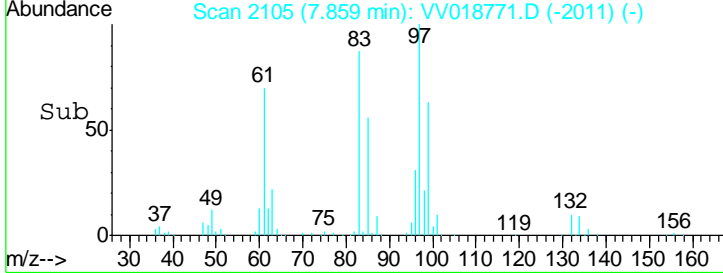
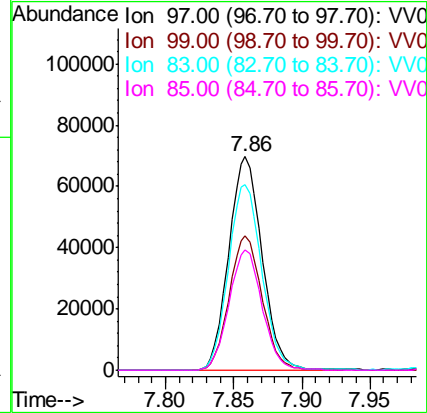
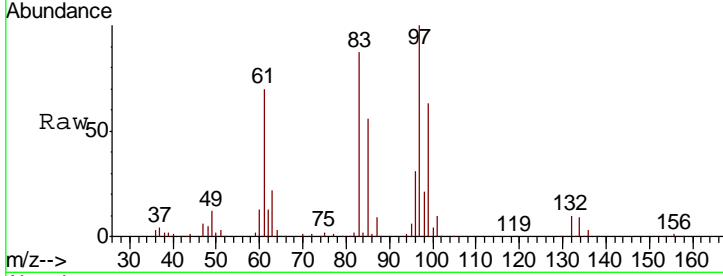




#45
 1,1,2-Trichloroethane
 Concen: 46.877 ug/L
 RT: 7.86 min Scan# 2105
 Delta R.T. 0.00 min
 Lab File: VV018771.D
 Acq: 08 Oct 2020 17:59

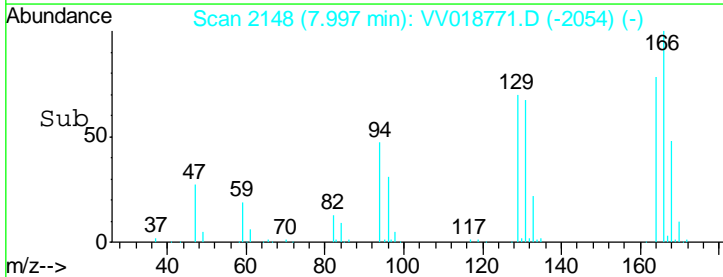
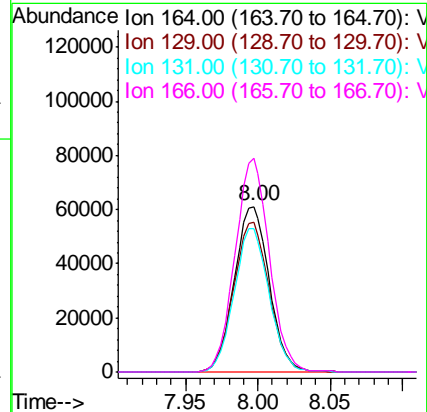
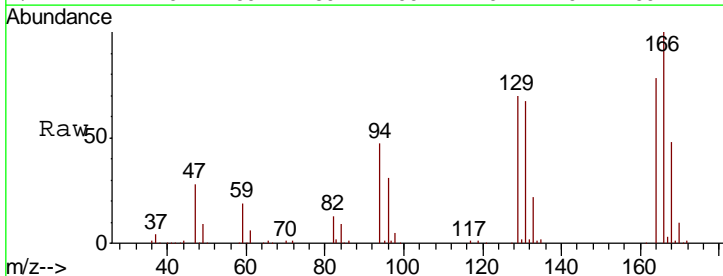
Instrument :
 MSVOA_V
 ClientSampled :
 VSTD05079

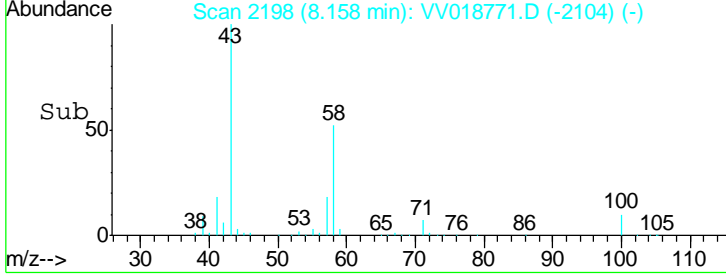
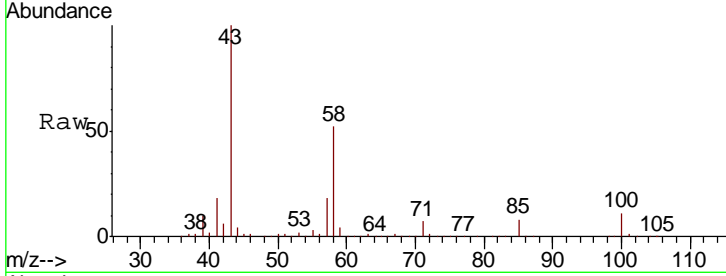
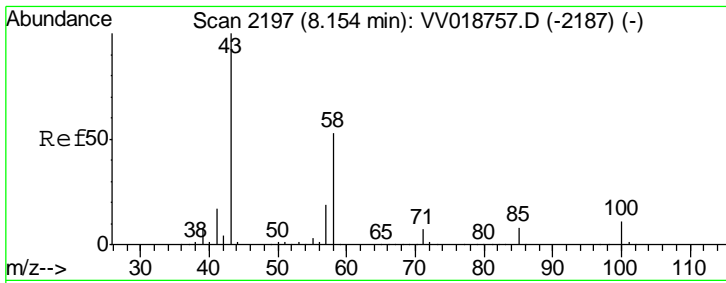
Tgt Ion	Resp	Lower	Upper
97	118590		
99	62.7	43.3	80.3
83	87.2	60.5	112.5
85	56.4	38.3	71.1



#46
 Tetrachloroethene
 Concen: 43.479 ug/L
 RT: 8.00 min Scan# 2148
 Delta R.T. 0.00 min
 Lab File: VV018771.D
 Acq: 08 Oct 2020 17:59

Tgt Ion	Resp	Lower	Upper
164	102002		
129	90.1	62.8	116.6
131	86.2	60.8	112.8
166	128.9	88.9	165.1



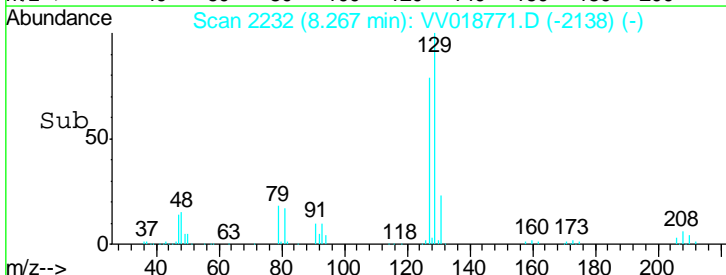
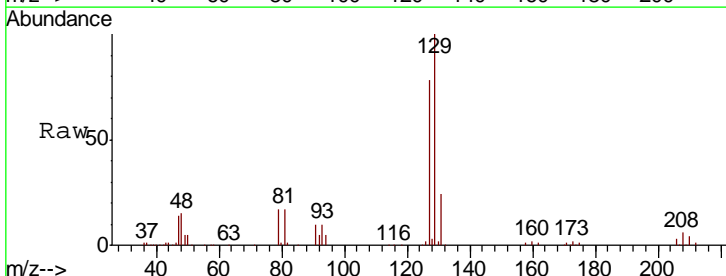
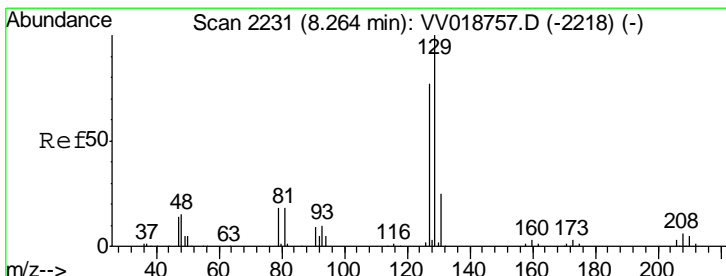
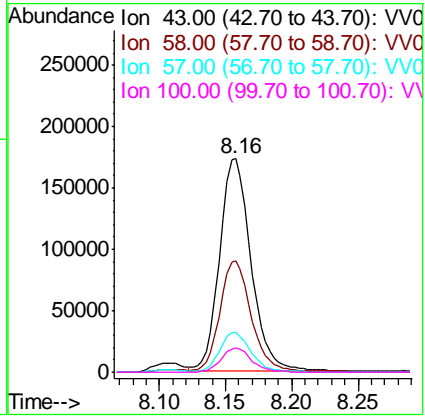


#48
 2-Hexanone
 Concen: 111.242 ug/L
 RT: 8.16 min Scan# 2198
 Delta R.T. 0.00 min
 Lab File: VV018771.D
 Acq: 08 Oct 2020 17:59

Instrument : MSVOA_V
 ClientSampleID : VSTD05079

Tgt Ion: 43 Resp: 286214

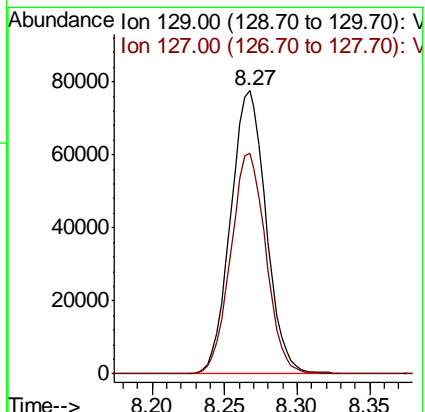
Ion	Ratio	Lower	Upper
43	100		
58	51.3	45.1	67.7
57	18.9	15.7	23.5
100	11.1	11.0	16.4

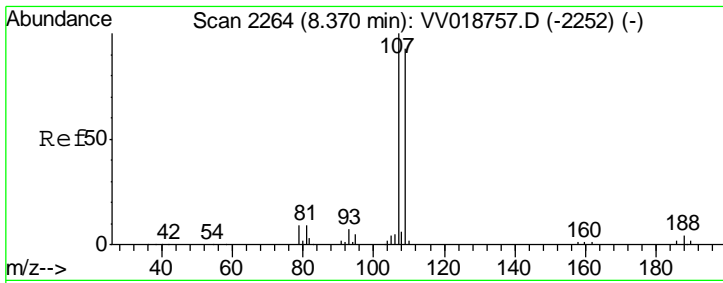


#49
 Dibromochloromethane
 Concen: 45.433 ug/L
 RT: 8.27 min Scan# 2232
 Delta R.T. 0.00 min
 Lab File: VV018771.D
 Acq: 08 Oct 2020 17:59

Tgt Ion: 129 Resp: 131463

Ion	Ratio	Lower	Upper
129	100		
127	78.1	54.1	100.5

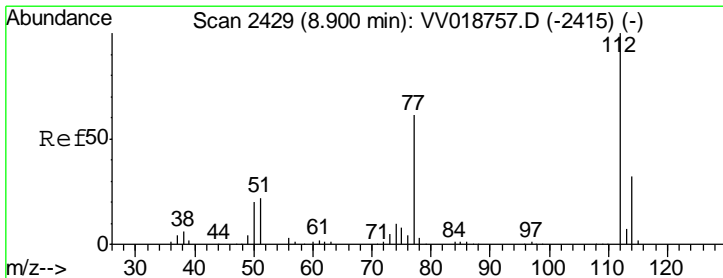
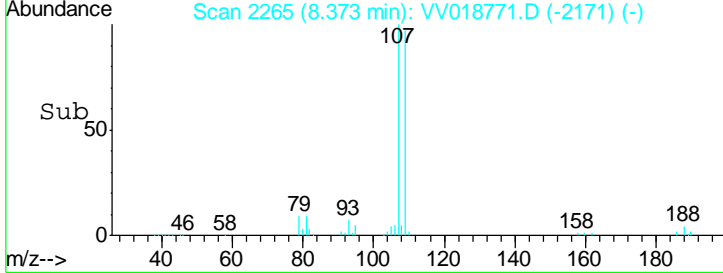
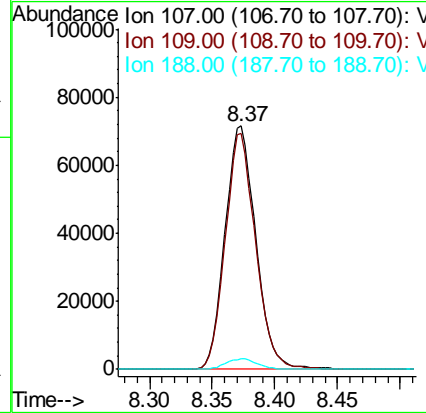
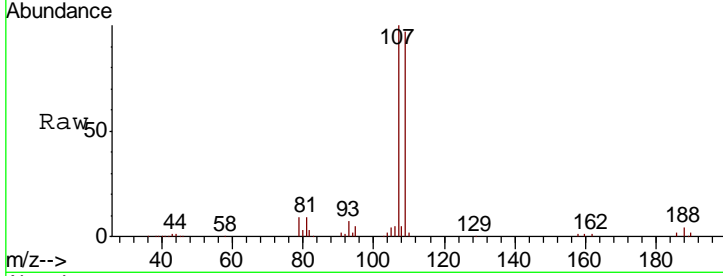




#50
 1,2-Dibromoethane
 Concen: 45.309 ug/L
 RT: 8.37 min Scan# 2265
 Delta R.T. 0.00 min
 Lab File: VV018771.D
 Acq: 08 Oct 2020 17:59

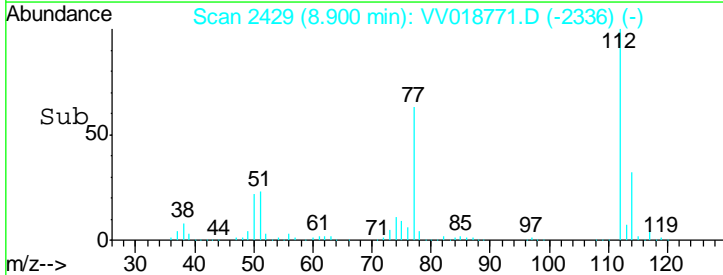
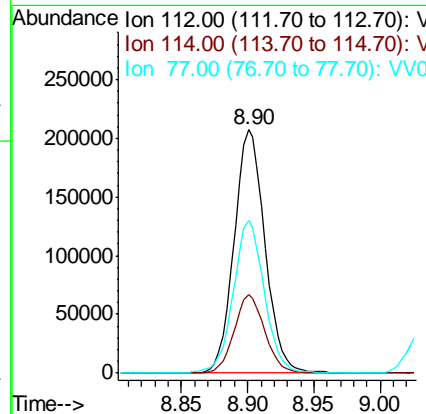
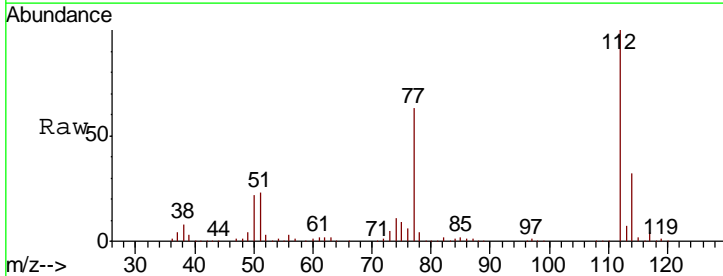
Instrument : MSVOA_V
 ClientSampled : VSTD05079

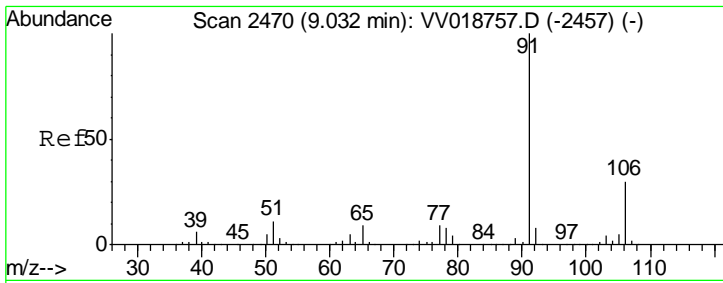
Tgt Ion	Resp	Lower	Upper
107	121871		
109	97.0	65.1	120.9
188	4.3	3.7	5.5



#51
 Chlorobenzene
 Concen: 45.920 ug/L
 RT: 8.90 min Scan# 2429
 Delta R.T. -0.00 min
 Lab File: VV018771.D
 Acq: 08 Oct 2020 17:59

Tgt Ion	Resp	Lower	Upper
112	334740		
114	32.1	22.4	41.6
77	62.6	44.8	67.2

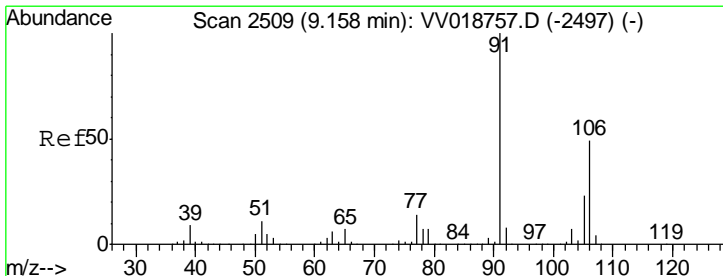
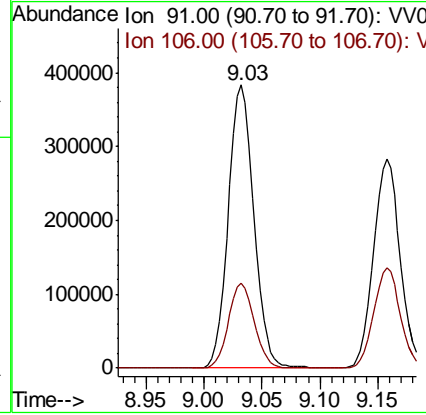
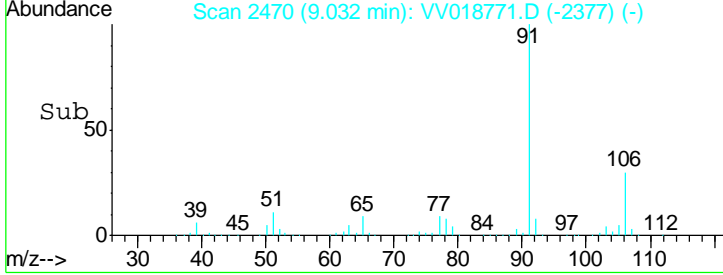
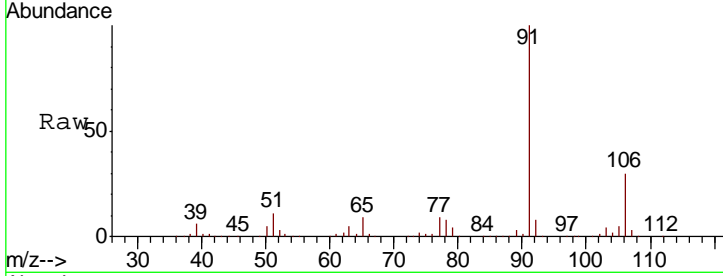




#52
Ethylbenzene
Concen: 48.857 ug/L
RT: 9.03 min Scan# 2470
Delta R.T. -0.00 min
Lab File: VV018771.D
Acq: 08 Oct 2020 17:59

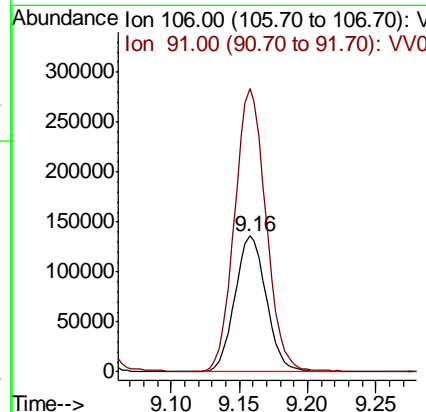
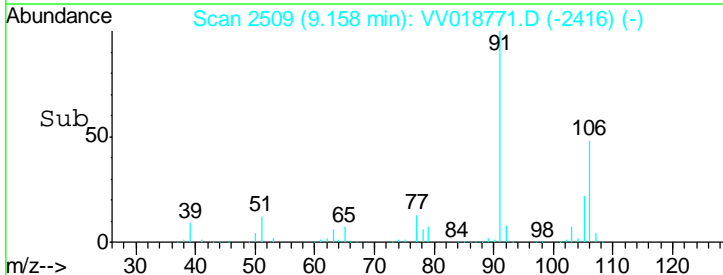
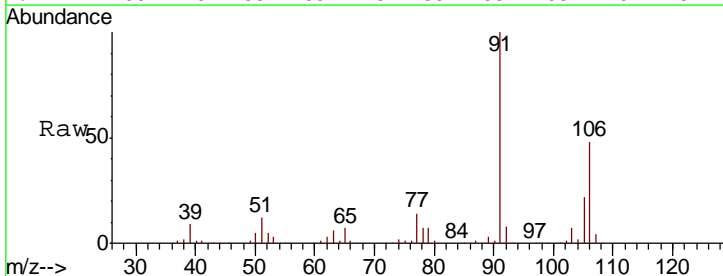
Instrument : MSVOA_V
ClientSampled : VSTD05079

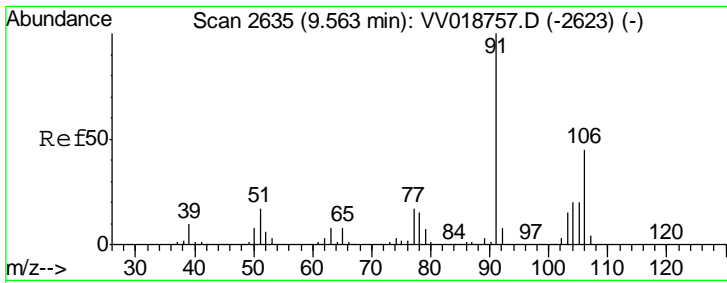
Tgt Ion: 91 Resp: 587929
Ion Ratio Lower Upper
91 100
106 30.0 21.9 40.7



#53
m,p-Xylene
Concen: 46.600 ug/L
RT: 9.16 min Scan# 2509
Delta R.T. -0.00 min
Lab File: VV018771.D
Acq: 08 Oct 2020 17:59

Tgt Ion: 106 Resp: 216715
Ion Ratio Lower Upper
106 100
91 208.0 142.3 264.3

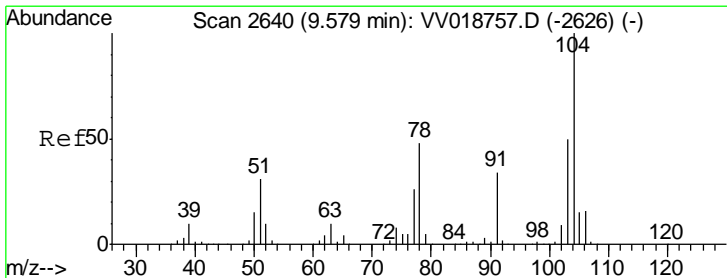
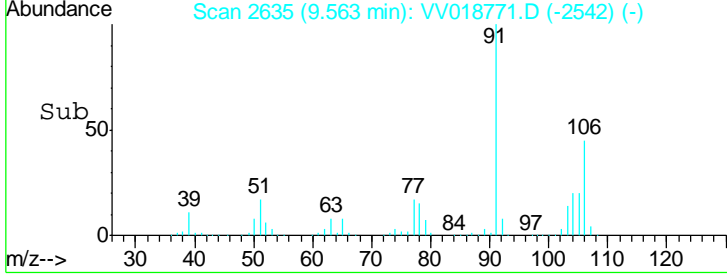
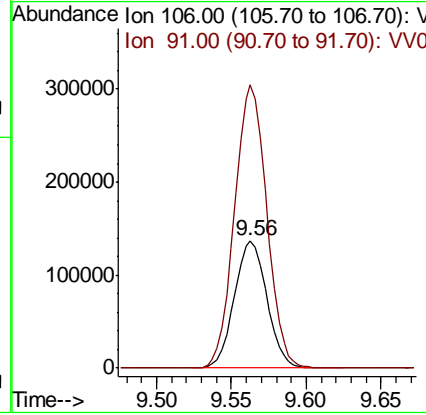
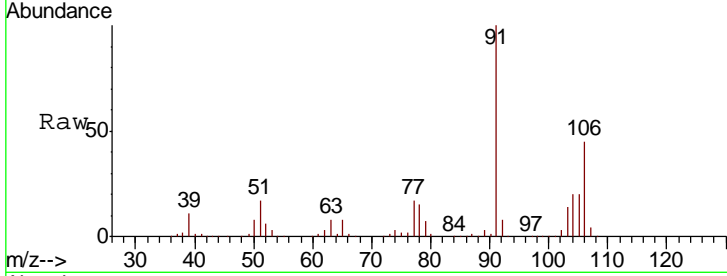




#54
 o-xylene
 Concen: 47.161 ug/L
 RT: 9.56 min Scan# 2635
 Delta R.T. -0.00 min
 Lab File: VV018771.D
 Acq: 08 Oct 2020 17:59

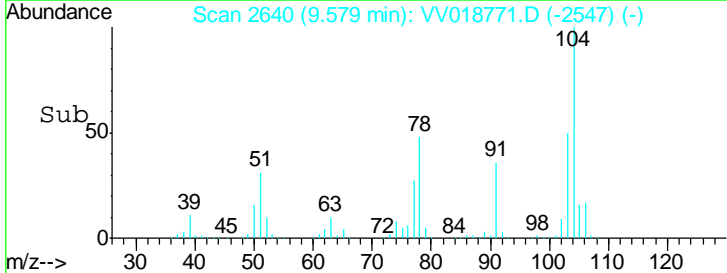
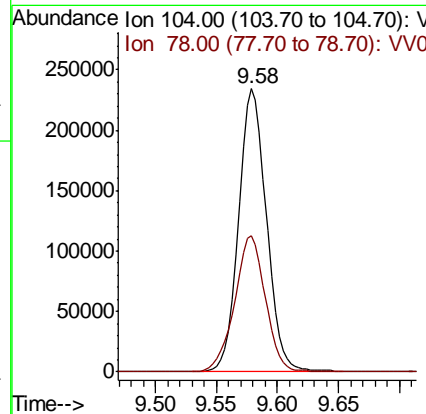
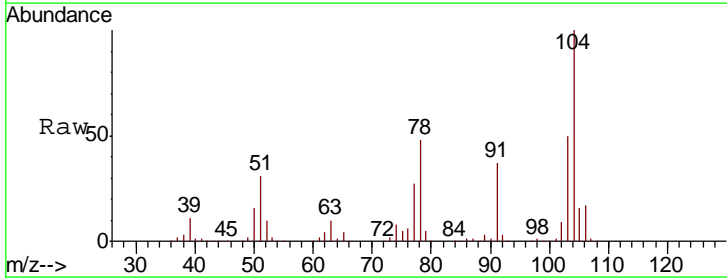
Instrument :
 MSVOA_V
ClientSampled :
 VSTD05079

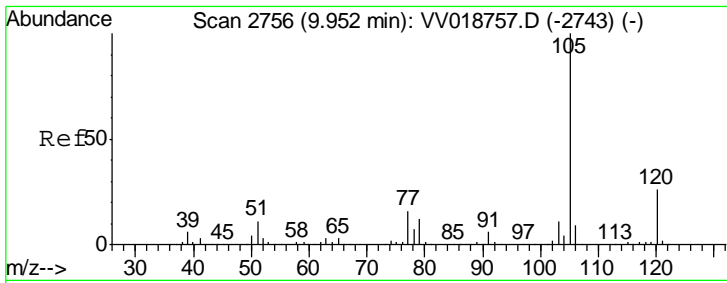
Tgt Ion:106 Resp: 207646
 Ion Ratio Lower Upper
 106 100
 91 221.4 151.0 280.4



#55
 Styrene
 Concen: 48.492 ug/L
 RT: 9.58 min Scan# 2640
 Delta R.T. -0.00 min
 Lab File: VV018771.D
 Acq: 08 Oct 2020 17:59

Tgt Ion:104 Resp: 371764
 Ion Ratio Lower Upper
 104 100
 78 48.0 30.2 56.2

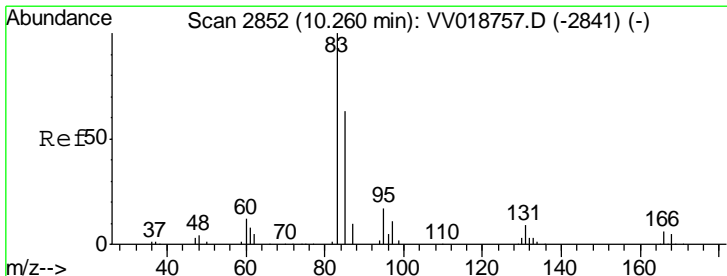
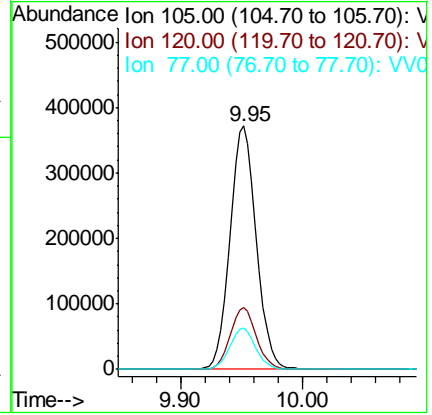
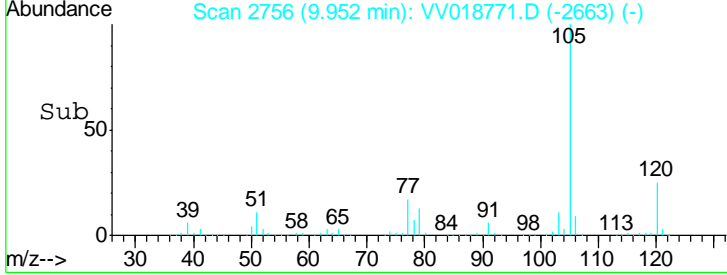
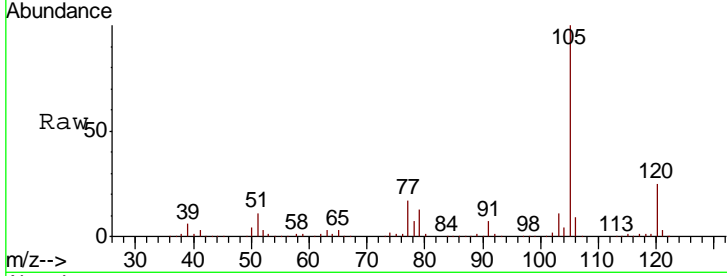




#56
 Isopropylbenzene
 Concen: 47.490 ug/L
 RT: 9.95 min Scan# 2756
 Delta R.T. -0.00 min
 Lab File: VV018771.D
 Acq: 08 Oct 2020 17:59

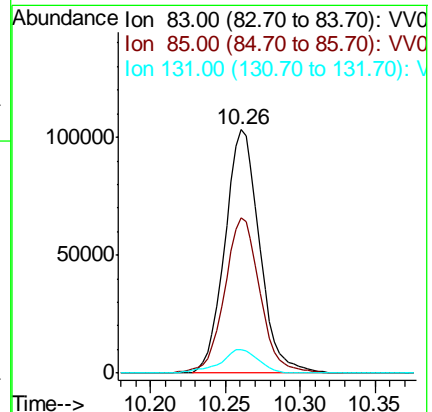
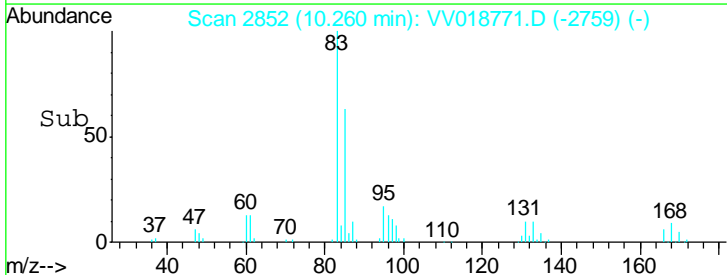
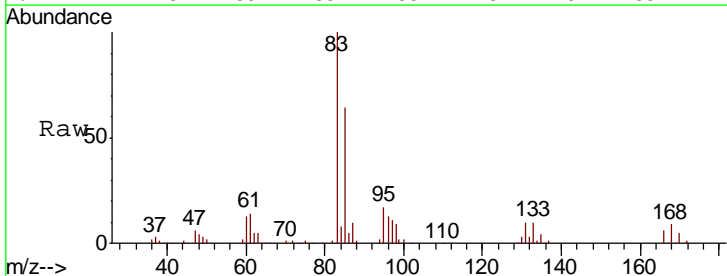
Instrument : MSVOA_V
 ClientSampled : VSTD05079

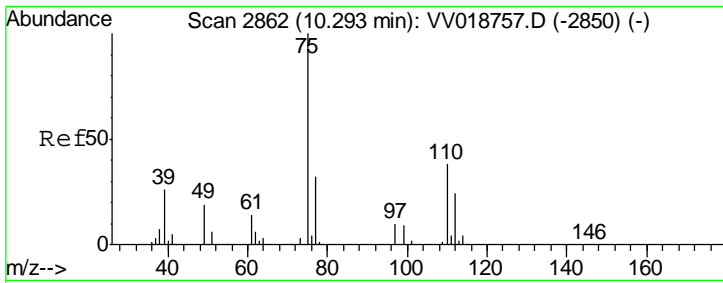
Tgt Ion	Resp	Lower	Upper
105	560772		
120	25.4	21.5	32.3
77	16.6	12.2	18.2



#58
 1,1,2,2-Tetrachloroethane
 Concen: 46.729 ug/L
 RT: 10.26 min Scan# 2852
 Delta R.T. -0.00 min
 Lab File: VV018771.D
 Acq: 08 Oct 2020 17:59

Tgt Ion	Resp	Lower	Upper
83	166630		
85	63.6	44.5	82.7
131	9.8	8.6	12.8

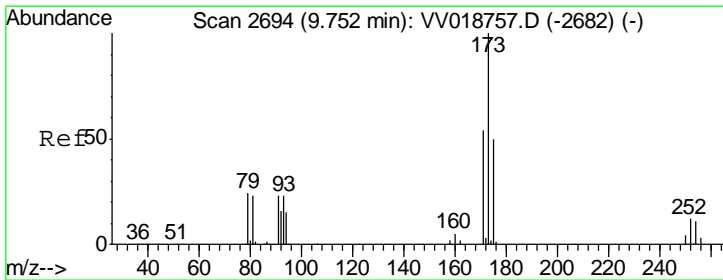
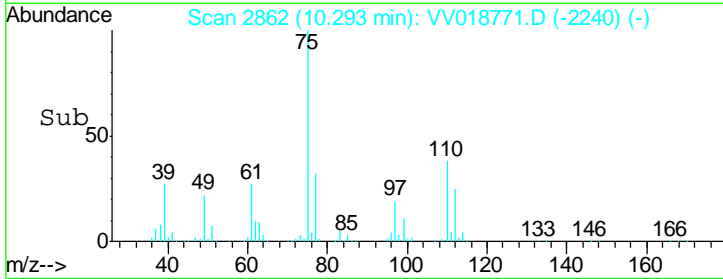
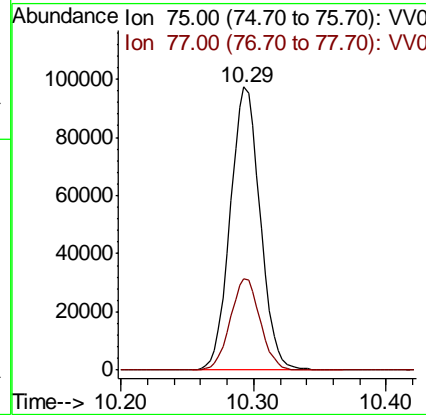
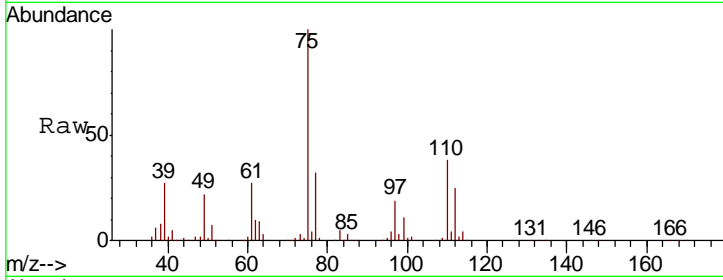




#59
 1,2,3-Trichloropropane
 Concen: 49.089 ug/L
 RT: 10.29 min Scan# 2862
 Delta R.T. -0.00 min
 Lab File: VV018771.D
 Acq: 08 Oct 2020 17:59

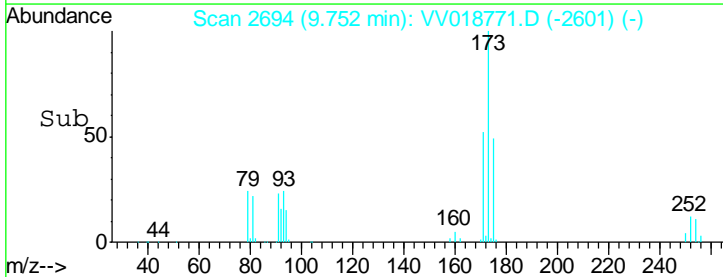
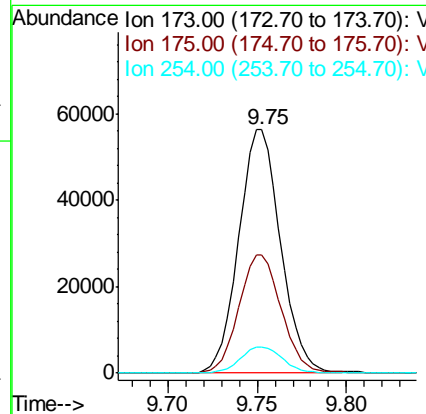
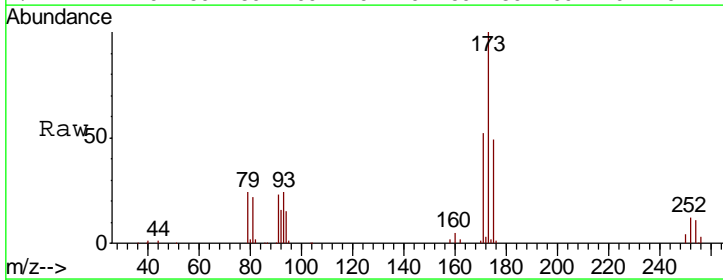
Instrument :
 MSVOA_V
 ClientSampled :
 VSTD05079

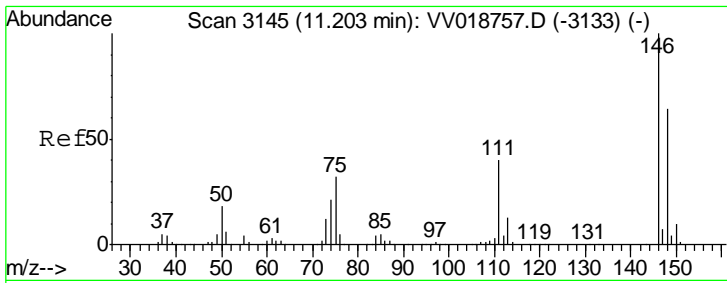
Tgt Ion: 75 Resp: 152591
 Ion Ratio Lower Upper
 75 100
 77 32.3 25.4 38.0



#61
 Bromoform
 Concen: 41.215 ug/L
 RT: 9.75 min Scan# 2694
 Delta R.T. -0.00 min
 Lab File: VV018771.D
 Acq: 08 Oct 2020 17:59

Tgt Ion: 173 Resp: 92178
 Ion Ratio Lower Upper
 173 100
 175 49.1 39.8 59.8
 254 10.9 8.5 12.7

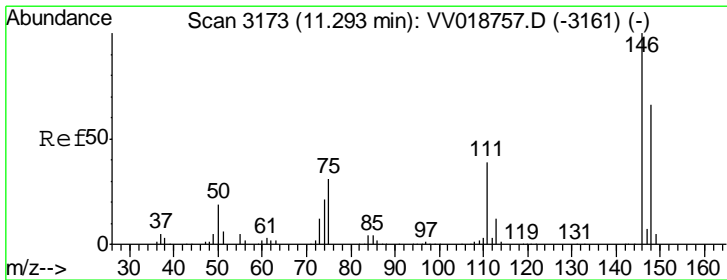
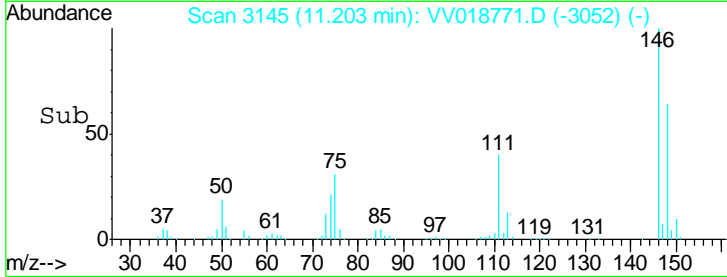
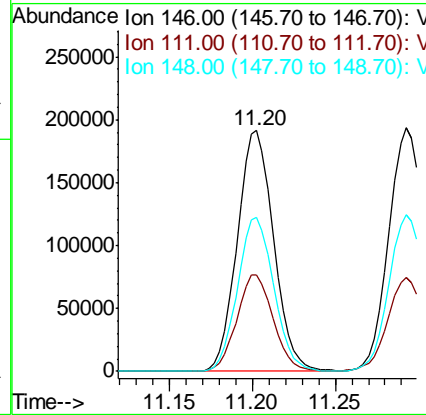
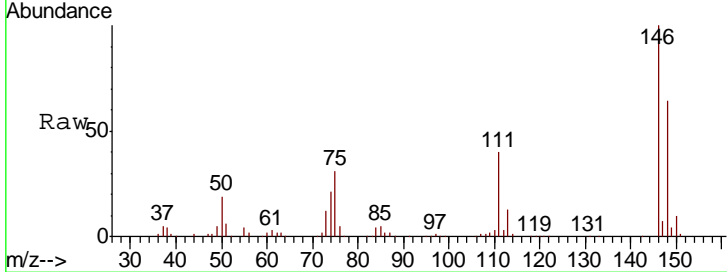




#62
 1,3-Dichlorobenzene
 Concen: 46.274 ug/L
 RT: 11.20 min Scan# 3145
 Delta R.T. -0.00 min
 Lab File: VV018771.D
 Acq: 08 Oct 2020 17:59

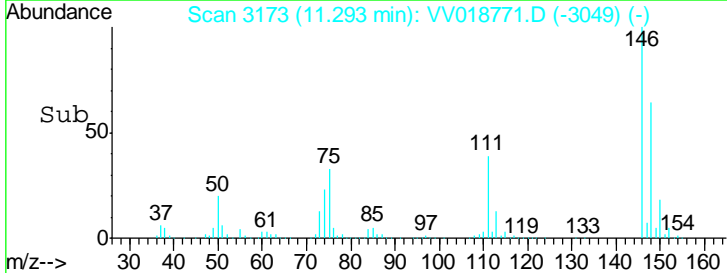
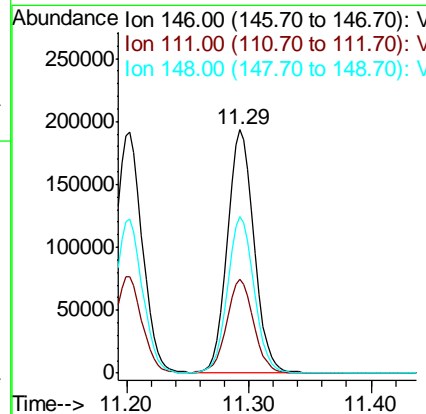
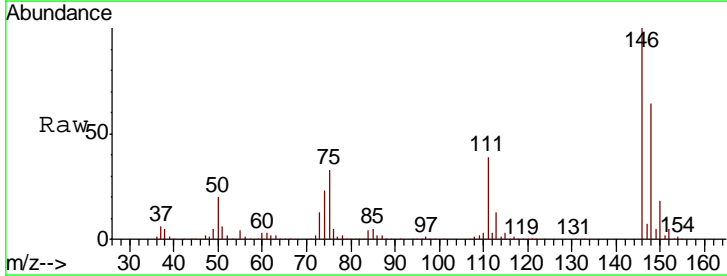
Instrument :
 MSVOA_V
 ClientSampled :
 VSTD05079

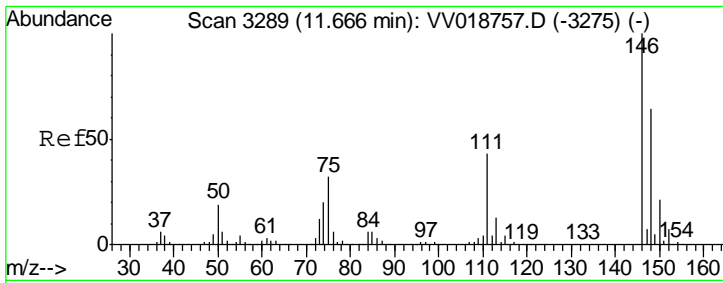
Tgt Ion	Resp	Lower	Upper
146	291582		
111	40.2	26.8	49.8
148	64.1	44.0	81.8



#63
 1,4-Dichlorobenzene
 Concen: 45.803 ug/L
 RT: 11.29 min Scan# 3173
 Delta R.T. -0.00 min
 Lab File: VV018771.D
 Acq: 08 Oct 2020 17:59

Tgt Ion	Resp	Lower	Upper
146	297201		
111	38.5	26.2	48.6
148	64.2	44.4	82.5

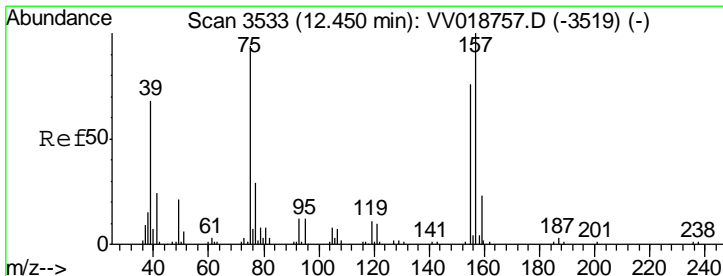
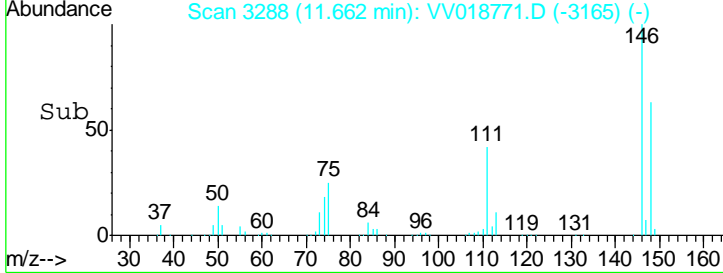
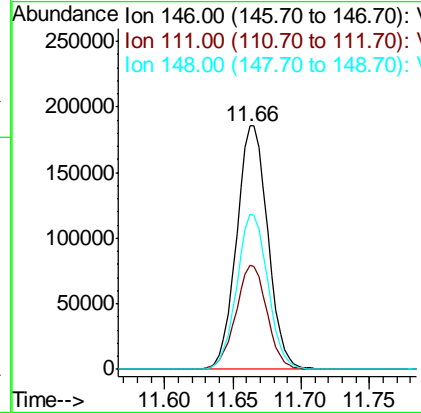
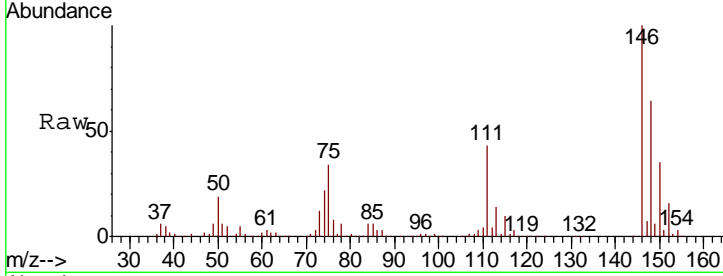




#65
 1,2-Dichlorobenzene
 Concen: 47.353 ug/L
 RT: 11.66 min Scan# 3288
 Delta R.T. -0.00 min
 Lab File: VV018771.D
 Acq: 08 Oct 2020 17:59

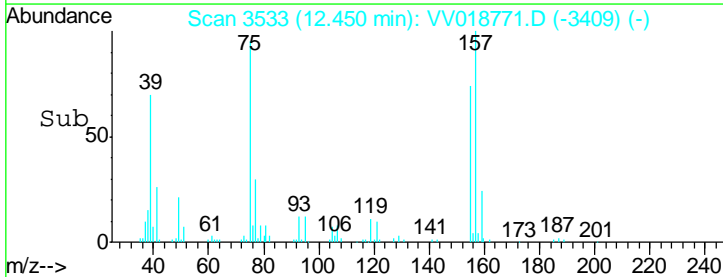
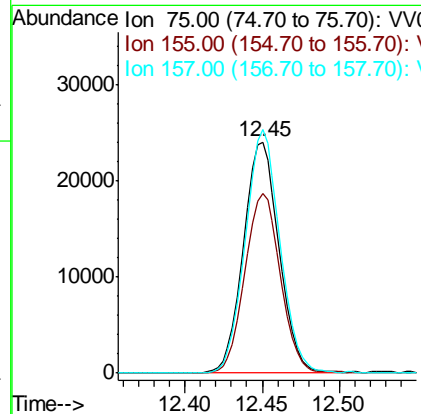
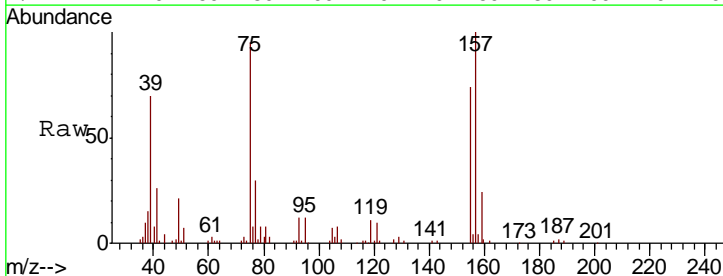
Instrument :
 MSVOA_V
 ClientSampled :
 VSTD05079

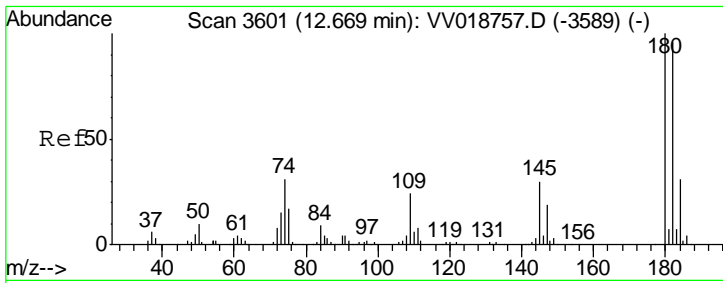
Tgt Ion	Resp	Lower	Upper
146	100		
111	42.8	32.8	49.2
148	63.5	51.9	77.9



#66
 1,2-Dibromo-3-chloropropane
 Concen: 45.258 ug/L
 RT: 12.45 min Scan# 3533
 Delta R.T. -0.00 min
 Lab File: VV018771.D
 Acq: 08 Oct 2020 17:59

Tgt Ion	Resp	Lower	Upper
75	100		
155	78.0	73.0	109.6
157	105.5	95.8	143.6

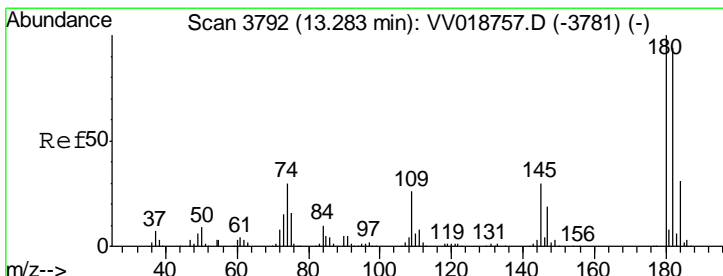
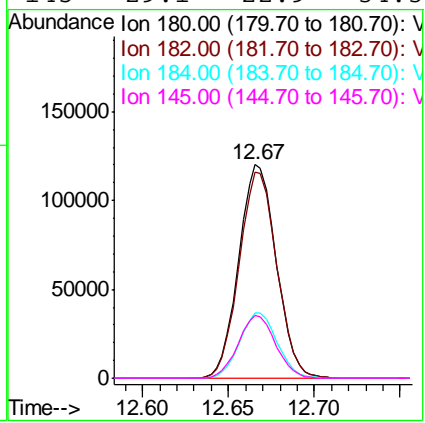
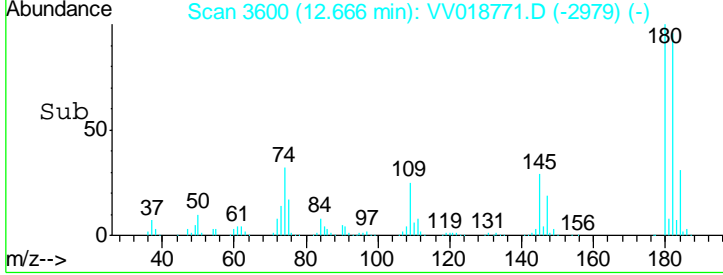
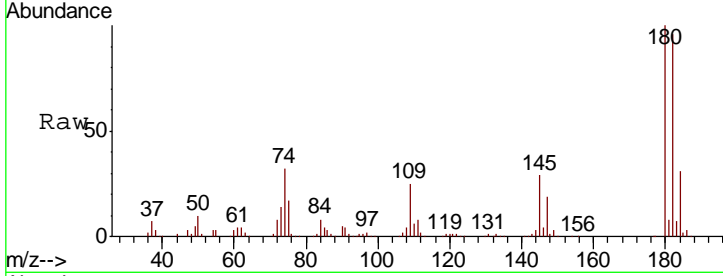




#67
 1,3,5-Trichlorobenzene
 Concen: 41.707 ug/L
 RT: 12.67 min Scan# 3600
 Delta R.T. -0.00 min
 Lab File: VV018771.D
 Acq: 08 Oct 2020 17:59

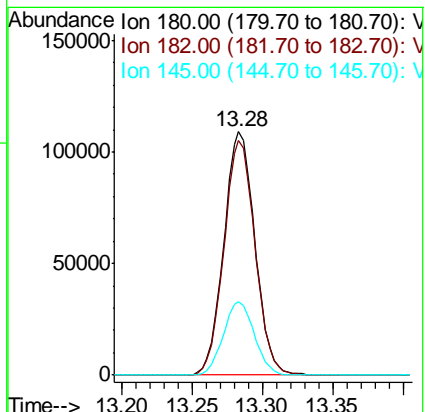
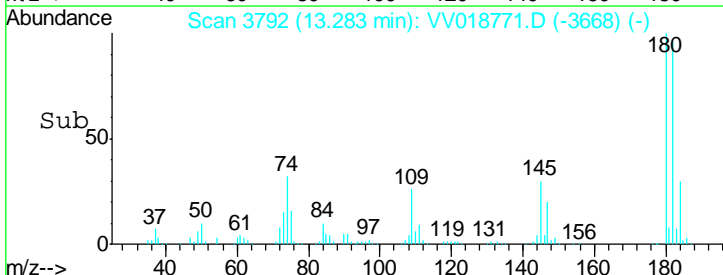
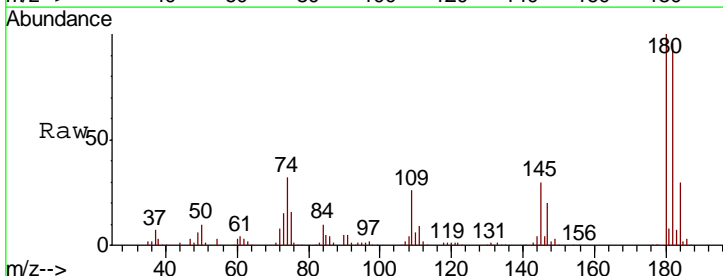
Instrument : MSVOA_V
 ClientSampled : VSTD05079

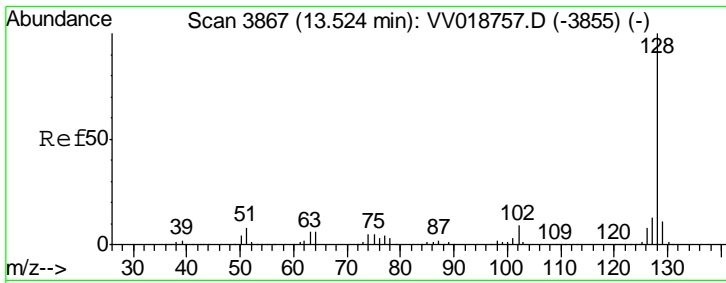
Tgt Ion	Resp	Lower	Upper
180	182044		
180	100		
182	96.8	77.1	115.7
184	30.9	24.3	36.5
145	29.1	22.9	34.3



#68
 1,2,4-trichlorobenzene
 Concen: 41.304 ug/L
 RT: 13.28 min Scan# 3792
 Delta R.T. -0.00 min
 Lab File: VV018771.D
 Acq: 08 Oct 2020 17:59

Tgt Ion	Resp	Lower	Upper
180	167760		
180	100		
182	96.3	76.3	114.5
145	30.1	23.6	35.4

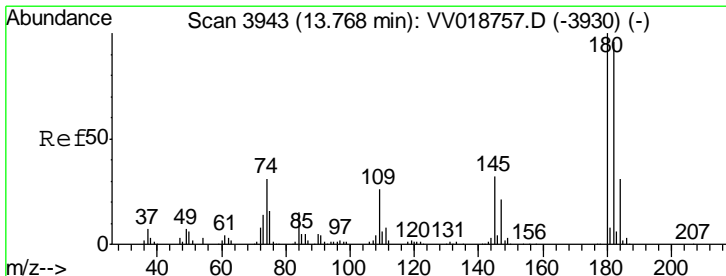
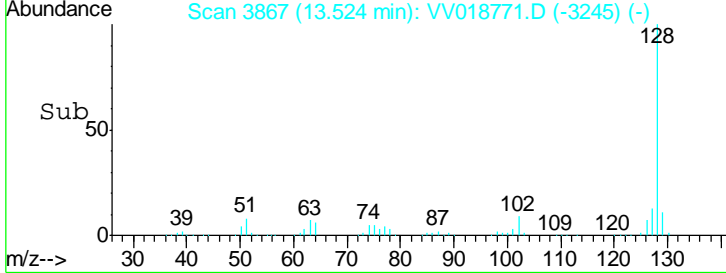
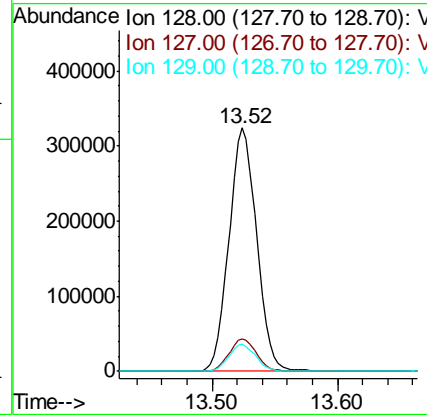
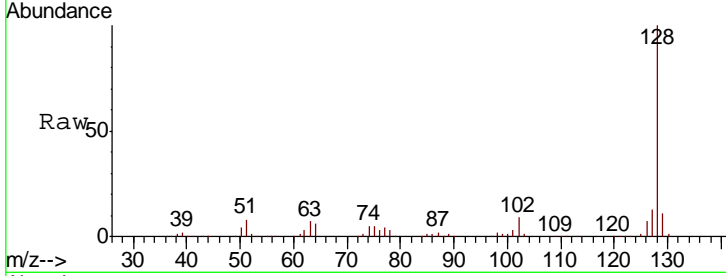




#69
 Naphthalene
 Concen: 42.649 ug/L
 RT: 13.52 min Scan# 3867
 Delta R.T. -0.00 min
 Lab File: VV018771.D
 Acq: 08 Oct 2020 17:59

Instrument : MSVOA_V
 ClientSampled : VSTD05079

Tgt Ion	Resp	Lower	Upper
128	495864		
127	13.3	10.3	15.5
129	10.9	8.6	12.8



#70
 1,2,3-Trichlorobenzene
 Concen: 41.515 ug/L
 RT: 13.77 min Scan# 3943
 Delta R.T. -0.00 min
 Lab File: VV018771.D
 Acq: 08 Oct 2020 17:59

Tgt Ion	Resp	Lower	Upper
180	169268		
182	94.3	77.1	115.7
145	31.8	25.1	37.7

