

Data Path : Z:\voasrv\HPCHEM1\MSVOA_V\Data\VV100821\
 Data File : VV022692.D
 Acq On : 08 Oct 2021 10:39
 Operator : SY/MD
 Sample : VV1008WBL01
 Misc : 25.0mL/MSVOA_V/WATER
 ALS Vial : 4 Sample Multiplier: 1

Instrument :
 MSVOA_V
 ClientSampled :

Quant Time: Oct 09 01:23:51 2021
 Quant Method : Z:\voasrv\HPCHEM1\MSVOA_V\Method\SFAMVTR100721WMA.M
 Quant Title : TRACE VOA SFAM1.0
 QLast Update : Sat Oct 09 01:23:25 2021
 Response via : Initial Calibration

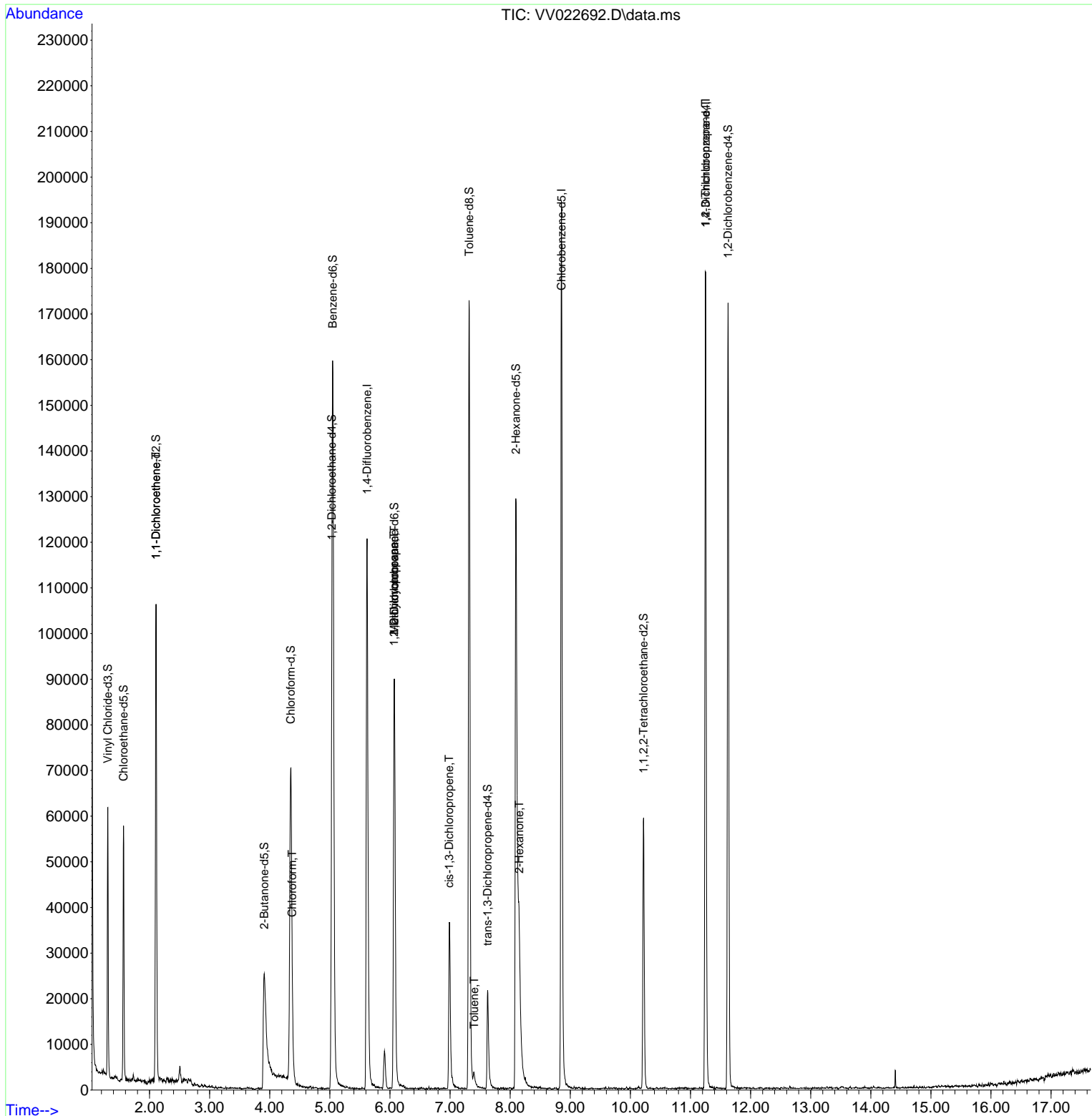
Compound	R.T.	QIon	Response	Conc	Units	Dev(Min)
Internal Standards						
1) 1,4-Difluorobenzene	5.619	114	109109	5.000	ug/L	0.00
28) Chlorobenzene-d5	8.854	117	110434	5.000	ug/L	0.00
58) 1,4-Dichlorobenzene-d4	11.252	152	49256	5.000	ug/L	0.00
System Monitoring Compounds						
4) Vinyl Chloride-d3	1.304	65	36014	4.798	ug/L	0.00
Spiked Amount	5.000	Range 40 - 130	Recovery	=	96.000%	
7) Chloroethane-d5	1.568	69	34513	5.116	ug/L	0.00
Spiked Amount	5.000	Range 65 - 130	Recovery	=	102.400%	
11) 1,1-Dichloroethene-d2	2.108	63	53863	3.658	ug/L	0.00
Spiked Amount	5.000	Range 60 - 125	Recovery	=	73.200%	
20) 2-Butanone-d5	3.908	46	53273	27.065	ug/L	0.00
Spiked Amount	50.000	Range 40 - 130	Recovery	=	54.140%	
24) Chloroform-d	4.349	84	72460	4.684	ug/L	0.00
Spiked Amount	5.000	Range 70 - 125	Recovery	=	93.600%	
26) 1,2-Dichloroethane-d4	5.034	65	35914	4.783	ug/L	0.00
Spiked Amount	5.000	Range 70 - 130	Recovery	=	95.600%	
32) Benzene-d6	5.050	84	141967	4.318	ug/L	0.00
Spiked Amount	5.000	Range 70 - 125	Recovery	=	86.400%	
36) 1,2-Dichloropropane-d6	6.072	67	45350	4.658	ug/L	0.00
Spiked Amount	5.000	Range 60 - 140	Recovery	=	93.200%	
41) Toluene-d8	7.317	98	117319	4.128	ug/L	0.00
Spiked Amount	5.000	Range 70 - 130	Recovery	=	82.600%	
43) trans-1,3-Dichloroprop...	7.625	79	13734	4.252	ug/L	0.00
Spiked Amount	5.000	Range 55 - 130	Recovery	=	85.000%	
46) 2-Hexanone-d5	8.095	63	55594	42.714	ug/L	0.00
Spiked Amount	50.000	Range 45 - 130	Recovery	=	85.420%	
56) 1,1,2,2-Tetrachloroeth...	10.220	84	29349	4.450	ug/L	0.00
Spiked Amount	5.000	Range 65 - 120	Recovery	=	89.000%	
66) 1,2-Dichlorobenzene-d4	11.625	152	47444	5.195	ug/L	0.00
Spiked Amount	5.000	Range 80 - 120	Recovery	=	104.000%	
Target Compounds						
12) 1,1-Dichloroethene	2.108	96	542	0.082	ug/L #	1
25) Chloroform	4.375	83	5246	0.351	ug/L	98
35) Methylcyclohexane	6.072	83	11011	0.972	ug/L #	16
37) 1,2-Dichloropropane	6.069	63	5153	0.720	ug/L #	85
39) cis-1,3-Dichloropropene	6.985	75	1019	0.108	ug/L #	63
42) Toluene	7.400	91	2040	0.068	ug/L	89
48) 2-Hexanone	8.149	43	11160	3.971	ug/L #	93
61) 1,2,3-Trichloropropane	11.249	75	5359	1.566	ug/L #	61

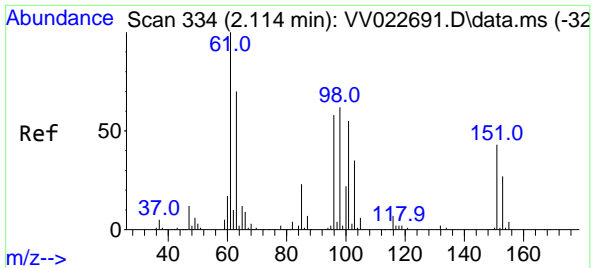
(#) = qualifier out of range (m) = manual integration (+) = signals summed

Data Path : Z:\voasrv\HPCHEM1\MSVOA_V\Data\VV100821\
 Data File : VV022692.D
 Acq On : 08 Oct 2021 10:39
 Operator : SY/MD
 Sample : VV1008WBL01
 Misc : 25.0mL/MSVOA_V/WATER
 ALS Vial : 4 Sample Multiplier: 1

Instrument :
 MSVOA_V
 ClientSampled :

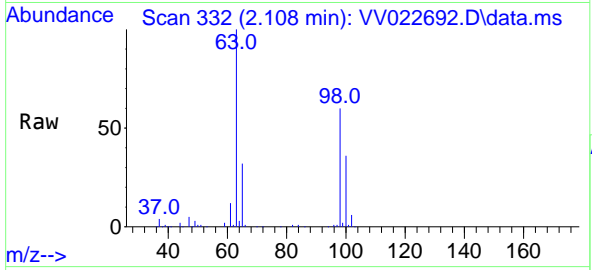
Quant Time: Oct 09 01:23:51 2021
 Quant Method : Z:\voasrv\HPCHEM1\MSVOA_V\Method\SFAMVTR100721WMA.M
 Quant Title : TRACE VOA SFAM1.0
 QLast Update : Sat Oct 09 01:23:25 2021
 Response via : Initial Calibration



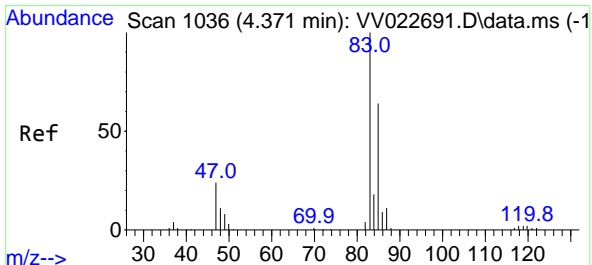
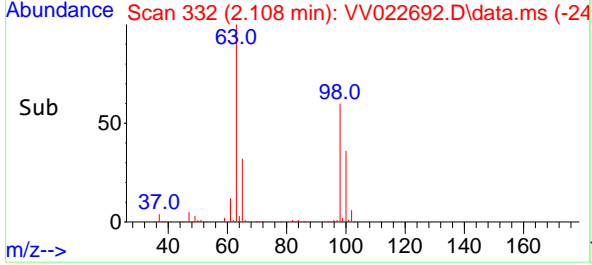
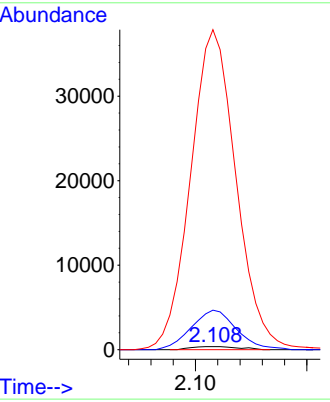


#12
 1,1-Dichloroethene
 Concen: 0.082 ug/L
 RT: 2.108 min Scan# 332
 Delta R.T. -0.006 min
 Lab File: VV022692.D
 Acq: 08 Oct 2021 10:39

Instrument :
 MSVOA_V
 ClientSampled :

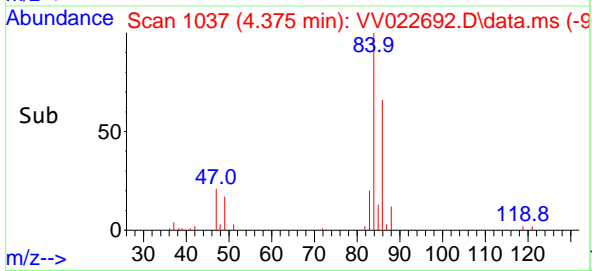
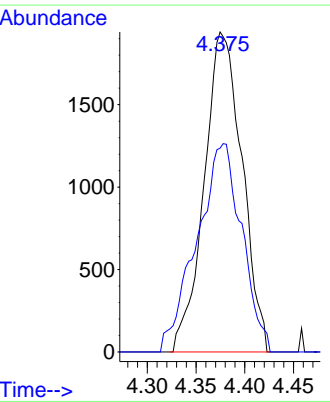
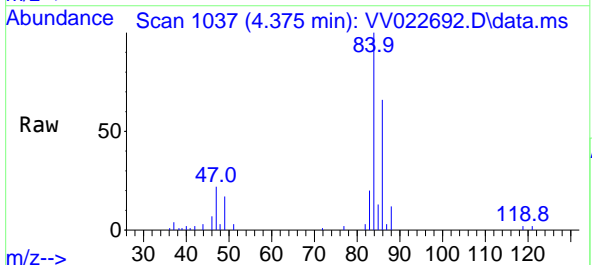


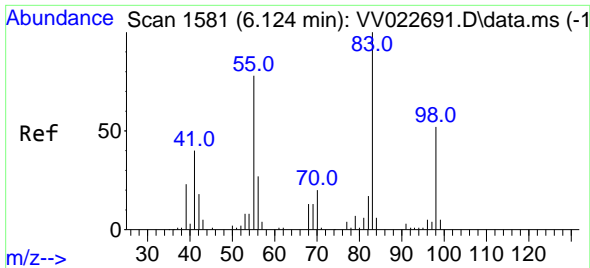
Tgt Ion: 96 Resp: 542
 Ion Ratio Lower Upper
 96 100
 61 1286.3 127.3 236.5#
 63 10404.4 106.2 197.2#



#25
 Chloroform
 Concen: 0.351 ug/L
 RT: 4.375 min Scan# 1037
 Delta R.T. 0.003 min
 Lab File: VV022692.D
 Acq: 08 Oct 2021 10:39

Tgt Ion: 83 Resp: 5246
 Ion Ratio Lower Upper
 83 100
 85 63.7 45.7 84.9



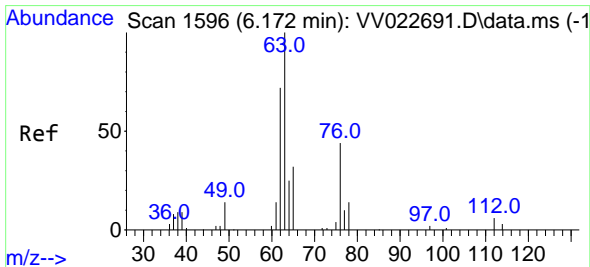
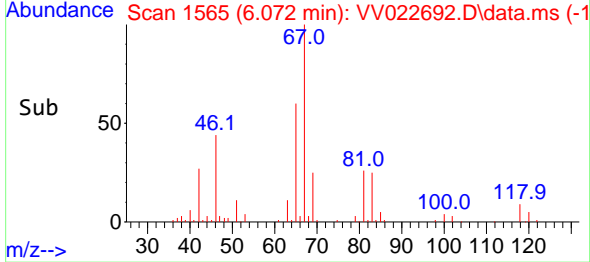
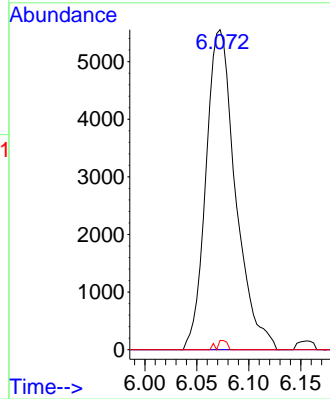
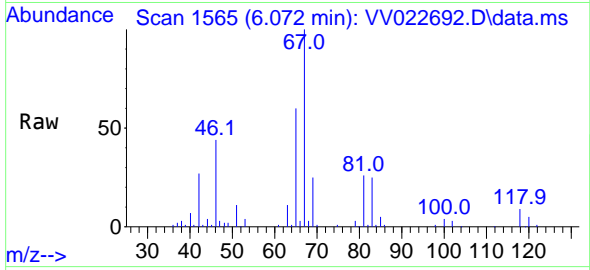


#35
 Methylcyclohexane
 Concen: 0.972 ug/L
 RT: 6.072 min Scan# 1565
 Delta R.T. -0.051 min
 Lab File: VV022692.D
 Acq: 08 Oct 2021 10:39

Instrument :
 MSVOA_V
 ClientSampled :

Tgt Ion: 83 Resp: 11011

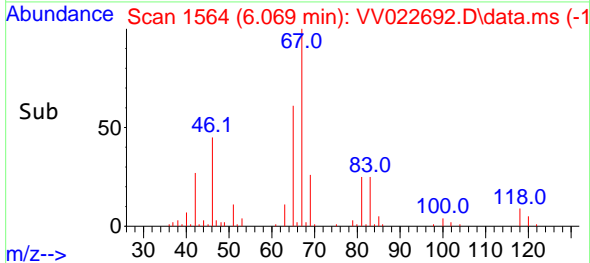
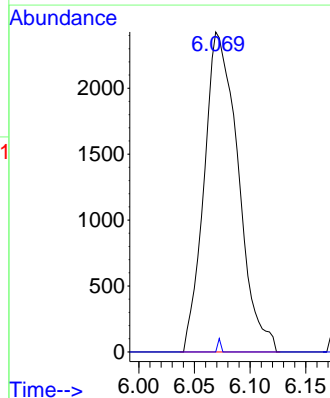
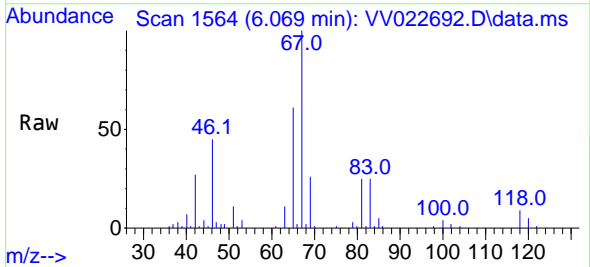
Ion	Ratio	Lower	Upper
83	100		
55	0.0	63.8	95.6#
98	1.0	42.1	63.1#

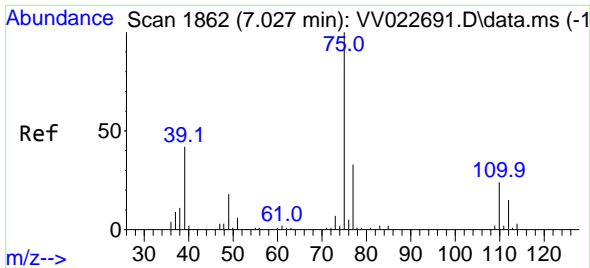


#37
 1,2-Dichloropropane
 Concen: 0.720 ug/L
 RT: 6.069 min Scan# 1564
 Delta R.T. -0.103 min
 Lab File: VV022692.D
 Acq: 08 Oct 2021 10:39

Tgt Ion: 63 Resp: 5153

Ion	Ratio	Lower	Upper
63	100		
112	0.4	4.4	6.6#

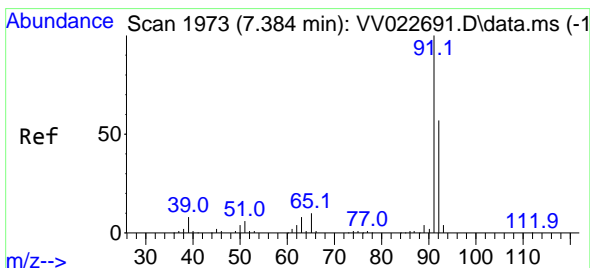
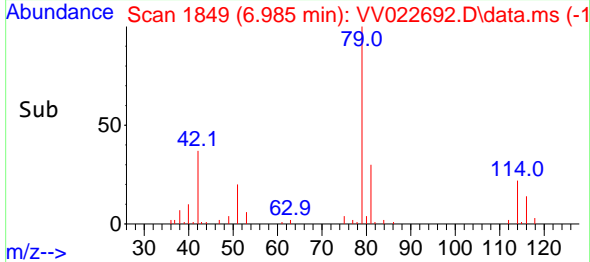
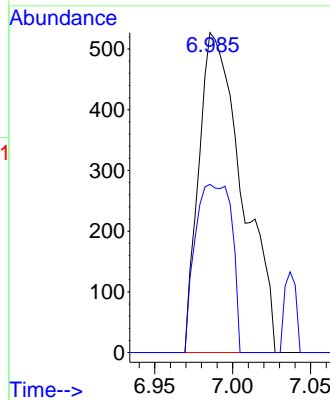
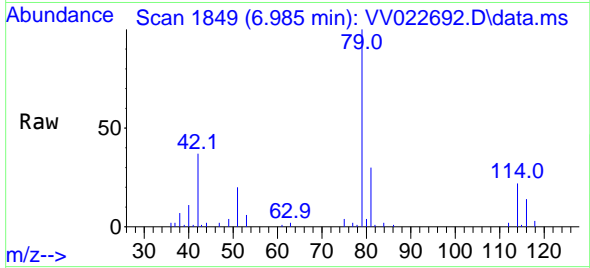




#39
 cis-1,3-Dichloropropene
 Concen: 0.108 ug/L
 RT: 6.985 min Scan# 1849
 Delta R.T. -0.042 min
 Lab File: VV022692.D
 Acq: 08 Oct 2021 10:39

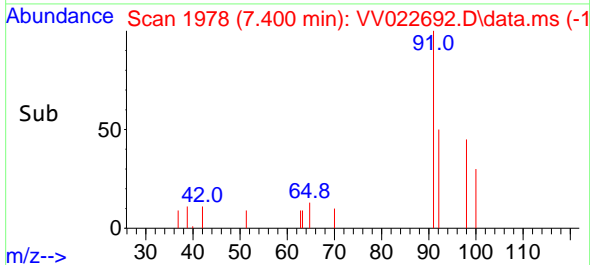
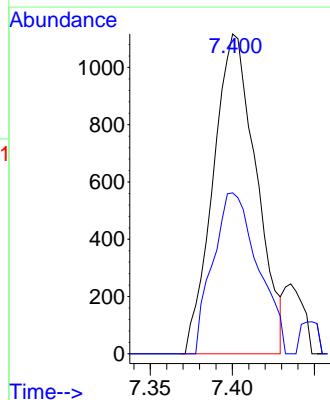
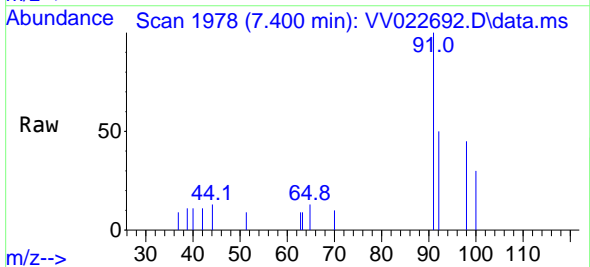
Instrument :
 MSVOA_V
 ClientSampled :

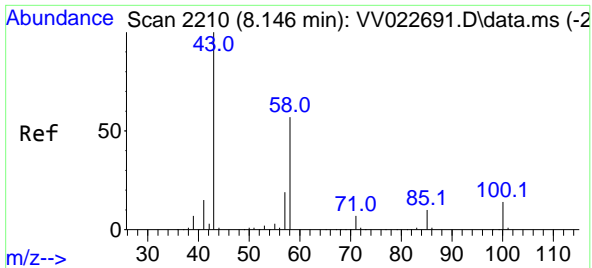
Tgt Ion: 75 Resp: 1019
 Ion Ratio Lower Upper
 75 100
 77 52.6 22.3 41.3#



#42
 Toluene
 Concen: 0.068 ug/L
 RT: 7.400 min Scan# 1978
 Delta R.T. 0.016 min
 Lab File: VV022692.D
 Acq: 08 Oct 2021 10:39

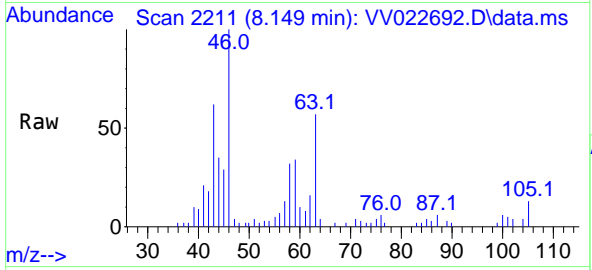
Tgt Ion: 91 Resp: 2040
 Ion Ratio Lower Upper
 91 100
 92 50.3 40.7 75.7





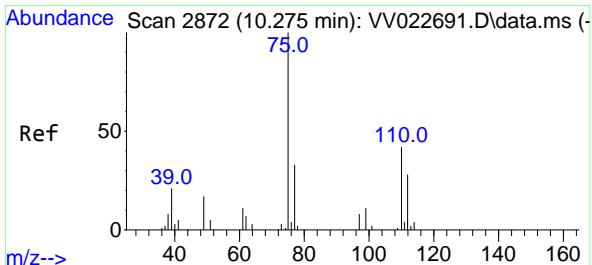
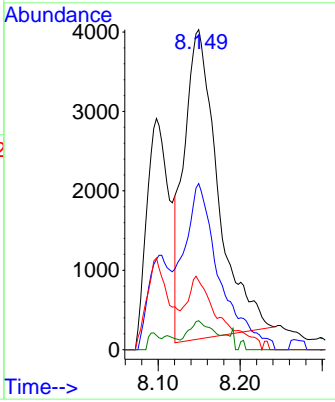
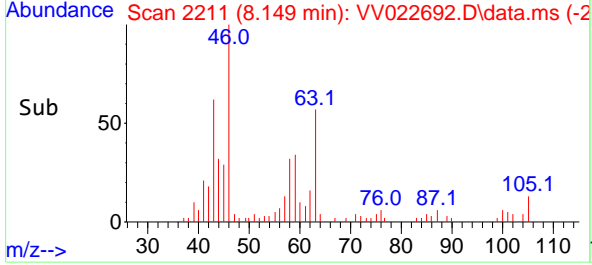
#48
 2-Hexanone
 Concen: 3.971 ug/L
 RT: 8.149 min Scan# 2211
 Delta R.T. 0.003 min
 Lab File: VV022692.D
 Acq: 08 Oct 2021 10:39

Instrument : MSVOA_V
 ClientSampled :

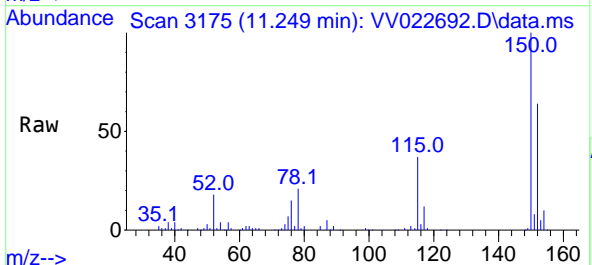


Tgt Ion: 43 Resp: 11160

Ion	Ratio	Lower	Upper
43	100		
58	55.7	47.4	71.0
57	22.9	15.3	22.9
100	7.7	10.4	15.6#



#61
 1,2,3-Trichloropropane
 Concen: 1.566 ug/L
 RT: 11.249 min Scan# 3175
 Delta R.T. 0.974 min
 Lab File: VV022692.D
 Acq: 08 Oct 2021 10:39



Tgt Ion: 75 Resp: 5359

Ion	Ratio	Lower	Upper
75	100		
77	33.0	25.4	38.2
110	0.8	34.2	51.4#

