

Data Path : Z:\voasrv\HPCHEM1\MSVOA_V\Data\VV100923\
 Data File : VV032347.D
 Acq On : 09 Oct 2023 23:02
 Operator : SY/MD
 Sample : 04748-14
 Misc : 25.0mL/MSVOA_V/WATER
 ALS Vial : 35 Sample Multiplier: 1

Instrument :
 MSVOA_V
 ClientSampleId :
 VHBLK001

Integration Parameters: rteint.p
 Integrator: RTE
 Smoothing : ON Filtering: 5
 Sampling : 1 Min Area: 3 % of largest Peak
 Start Thrs: 0.1 Max Peaks: 100
 Stop Thrs : 0 Peak Location: TOP

If leading or trailing edge < 100 prefer < Baseline drop else tangent >
 Peak separation: 5

Method : Z:\voasrv\HPCHEM1\MSVOA_V\Method\SFAMVTR092923WMA.M
 Title : TRACE VOA SFAM1.0

Signal : TIC: VV032347.D\data.ms

peak #	R.T. min	first scan	max scan	last scan	PK TY	peak height	corr. area	corr. % max.	% of total
1	1.105	16	20	29	rVB	5522	7130	1.66%	0.214%
2	1.278	66	74	90	rVB	69263	74790	17.46%	2.248%
3	1.532	145	153	167	rVB	55717	65455	15.28%	1.968%
4	2.056	305	316	334	rBV	101945	151060	35.26%	4.541%
5	2.169	343	351	361	rVB3	6223	12362	2.89%	0.372%
6	3.825	856	866	895	rBV	29343	117995	27.54%	3.547%
7	4.252	983	999	1024	rBV2	63882	170147	39.72%	5.115%
8	4.960	1204	1219	1237	rBV3	151607	380879	88.91%	11.450%
9	5.539	1385	1399	1415	rBV	114390	236940	55.31%	7.123%
10	5.992	1527	1540	1554	rBV	84691	181205	42.30%	5.447%
11	6.918	1817	1828	1861	rBV2	36288	84612	19.75%	2.544%
12	7.246	1918	1930	1960	rBV	177522	348988	81.46%	10.491%
13	7.561	2017	2028	2056	rBV	21322	46610	10.88%	1.401%
14	8.034	2165	2175	2217	rBV	183785	428396	100.00%	12.878%
15	8.789	2396	2410	2432	rBV	183973	324799	75.82%	9.764%
16	10.156	2824	2835	2854	rBV	66417	108481	25.32%	3.261%
17	11.188	3146	3156	3175	rBV	184598	298299	69.63%	8.967%
18	11.564	3262	3273	3291	rBV	183425	288307	67.30%	8.667%

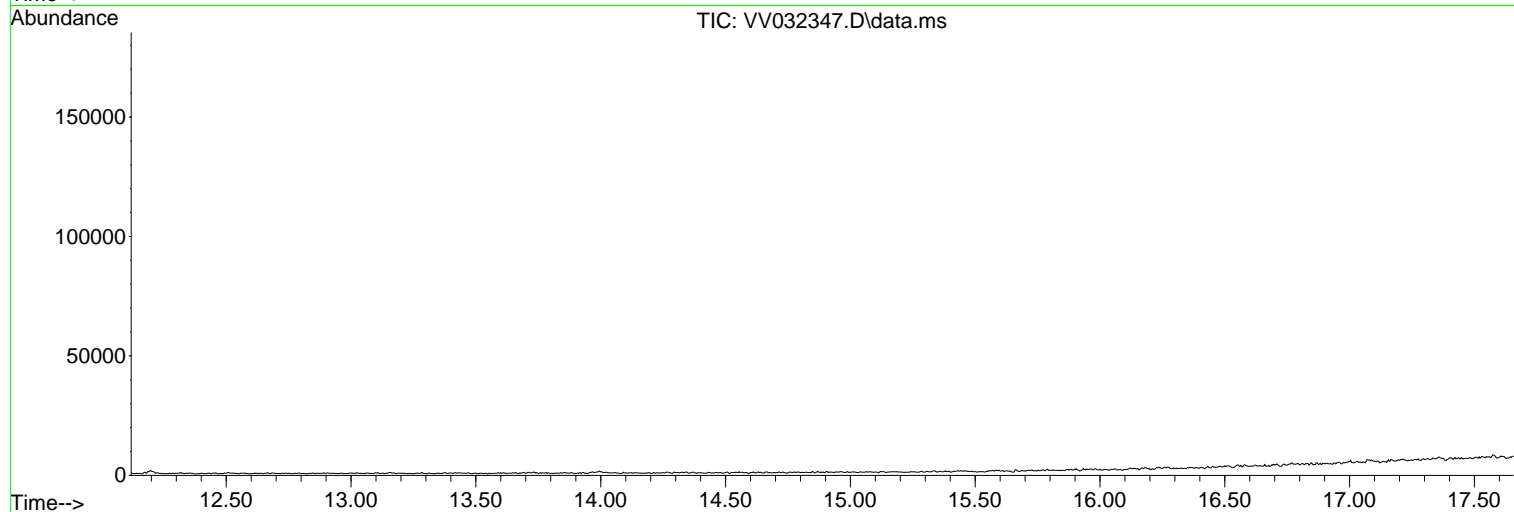
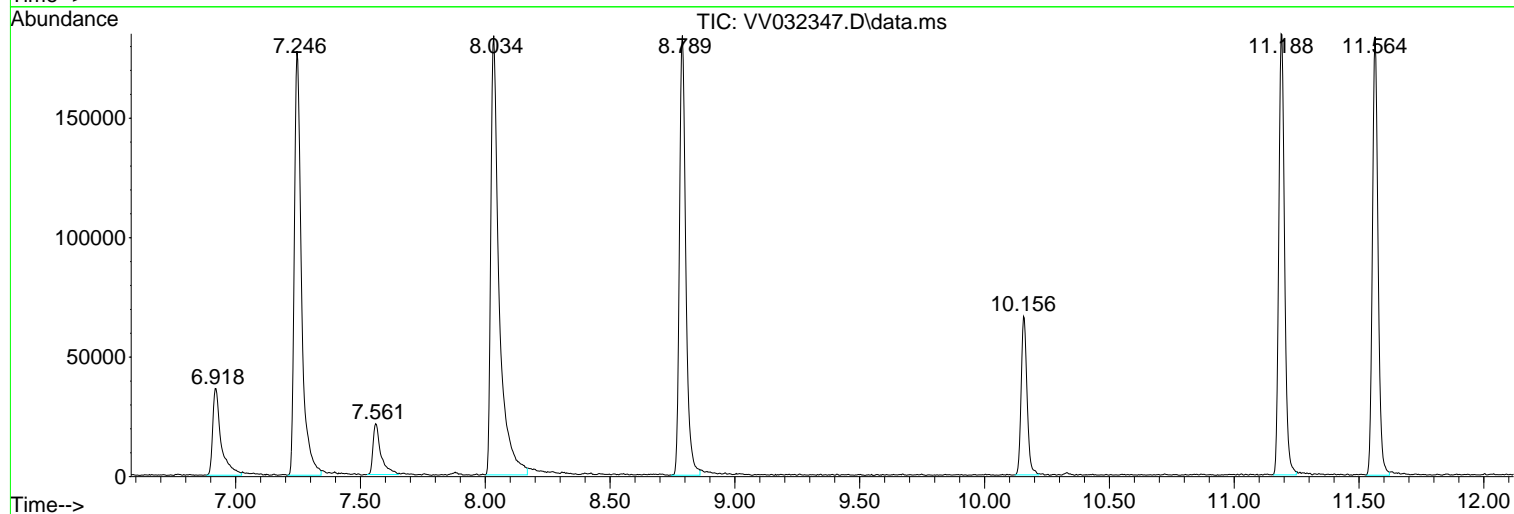
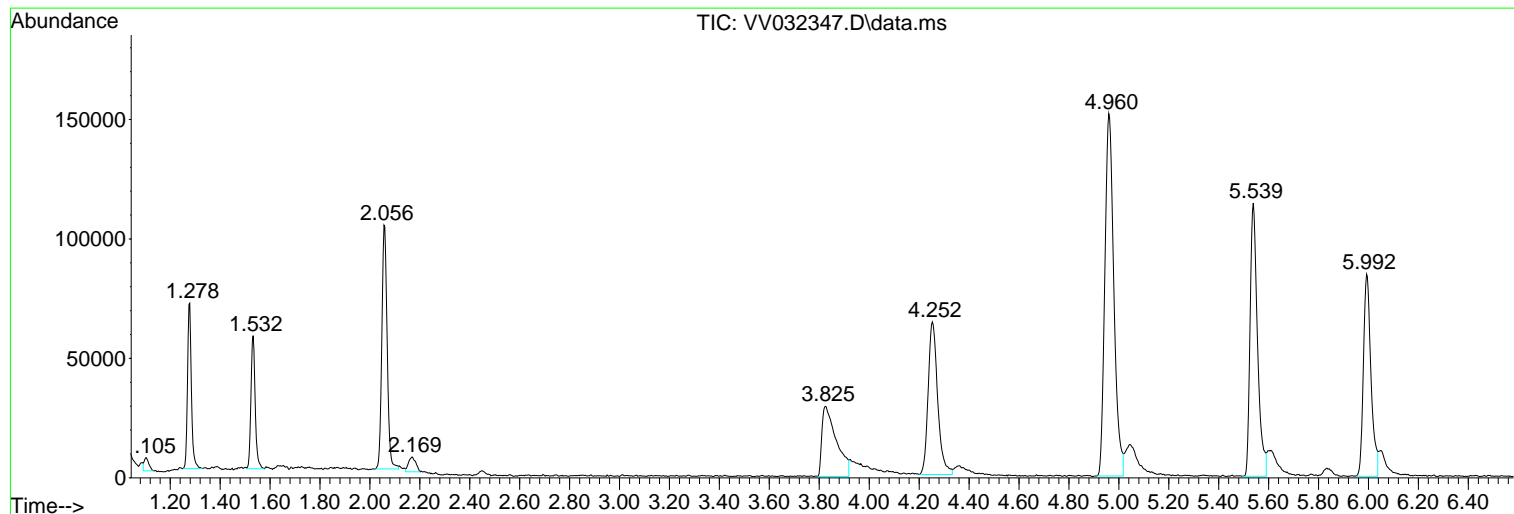
Sum of corrected areas: 3326455

Data Path : Z:\voasrv\HPCHEM1\MSVOA_V\Data\VV100923\
Data File : VV032347.D
Acq On : 09 Oct 2023 23:02
Operator : SY/MD
Sample : 04748-14
Misc : 25.0mL/MSVOA_V/WATER
ALS Vial : 35 Sample Multiplier: 1

Instrument :
MSVOA_V
ClientSampleId :
VHBLK001

Quant Method : Z:\voasrv\HPCHEM1\MSVOA_V\Method\SFAMVTR092923WMA.M
Quant Title : TRACE VOA SFAM1.0

TIC Library : C:\Database\NIST20.L
TIC Integration Parameters: LSCINT.P



Library Search Compound Report

Data Path : Z:\voasrv\HPCHEM1\MSVOA_V\Data\VV100923\
Data File : VV032347.D
Acq On : 09 Oct 2023 23:02
Operator : SY/MD
Sample : 04748-14
Misc : 25.0mL/MSVOA_V/WATER
ALS Vial : 35 Sample Multiplier: 1

Instrument :
MSVOA_V
ClientSampleId :
VHBLK001

Quant Method : Z:\voasrv\HPCHEM1\MSVOA_V\Method\SFAMVTR092923WMA.M
Quant Title : TRACE VOA SFAM1.0

TIC Library : C:\Database\NIST20.L
TIC Integration Parameters: LSCINT.P

No Library Search Compounds Detected

Data Path : Z:\voasrv\HPCHEM1\MSVOA_V\Data\VV100923\
Data File : VV032347.D
Acq On : 09 Oct 2023 23:02
Operator : SY/MD
Sample : 04748-14
Misc : 25.0mL/MSVOA_V/WATER
ALS Vial : 35 Sample Multiplier: 1

Instrument :
MSVOA_V
ClientSampleId :
VHBLK001

Quant Method : Z:\voasrv\HPCHEM1\MSVOA_V\Method\SFAMVTR092923WMA.M
Quant Title : TRACE VOA SFAM1.0

TIC Library : C:\Database\NIST0.L
TIC Integration Parameters: LSCINT.P

TIC Top Hit name	RT	EstConc	Units	Response	--Internal Standard--		
					#	RT	Resp Conc
