

Data Path : Z:\voasrv\HPCHEM1\MSVOA\_V\Data\VW101022\  
 Data File : VV028493.D  
 Acq On : 10 Oct 2022 10:49  
 Operator : SY/MD  
 Sample : N4519-01  
 Misc : 5.0mL/MSVOA\_V/WATER  
 ALS Vial : 5 Sample Multiplier: 1

Instrument :  
 MSVOA\_V  
 ClientSampleId :  
 MDL-WATER-QT4-2022-07

Quant Time: Oct 11 02:55:25 2022  
 Quant Method : Z:\voasrv\HPCHEM1\MSVOA\_V\Method\SFAMVLM100722WMA.M  
 Quant Title : VOC Analysis  
 QLast Update : Tue Oct 11 02:53:11 2022  
 Response via : Initial Calibration

Compound	R.T.	QIon	Response	Conc	Units	Dev(Min)
Internal Standards						
1) 1,4-Difluorobenzene	5.609	114	358614	50.000	ug/L	0.00
28) Chlorobenzene-d5	8.844	117	320950	50.000	ug/L	0.00
58) 1,4-Dichlorobenzene-d4	11.239	152	164852	50.000	ug/L	0.00
System Monitoring Compounds						
4) Vinyl Chloride-d3	1.304	65	136516	49.336	ug/L	0.00
Spiked Amount	50.000	Range 60 - 135	Recovery =	98.680%		
7) Chloroethane-d5	1.564	69	102900	46.899	ug/L	0.00
Spiked Amount	50.000	Range 70 - 130	Recovery =	93.800%		
11) 1,1-Dichloroethene-d2	2.101	63	178976	38.004	ug/L	0.00
Spiked Amount	50.000	Range 60 - 125	Recovery =	76.000%		
21) 2-Butanone-d5	3.889	46	160741	66.359	ug/L	0.00
Spiked Amount	100.000	Range 40 - 130	Recovery =	66.360%		
24) Chloroform-d	4.339	84	251153	49.489	ug/L	0.00
Spiked Amount	50.000	Range 70 - 125	Recovery =	98.980%		
26) 1,2-Dichloroethane-d4	5.024	65	171011	52.250	ug/L	0.00
Spiked Amount	50.000	Range 70 - 125	Recovery =	104.500%		
32) Benzene-d6	5.043	84	531517	51.682	ug/L	0.00
Spiked Amount	50.000	Range 70 - 125	Recovery =	103.360%		
36) 1,2-Dichloropropane-d6	6.063	67	164867	49.168	ug/L	0.00
Spiked Amount	50.000	Range 70 - 120	Recovery =	98.340%		
41) Toluene-d8	7.310	98	480413	52.175	ug/L	0.00
Spiked Amount	50.000	Range 80 - 120	Recovery =	104.360%		
43) trans-1,3-Dichloroprop...	7.616	79	82704	48.390	ug/L	0.00
Spiked Amount	50.000	Range 60 - 125	Recovery =	96.780%		
47) 2-Hexanone-d5	8.082	63	154832	84.884	ug/L	0.00
Spiked Amount	100.000	Range 45 - 130	Recovery =	84.880%		
56) 1,1,2,2-Tetrachloroeth...	10.207	84	209181	45.589	ug/L	0.00
Spiked Amount	50.000	Range 65 - 120	Recovery =	91.180%		
66) 1,2-Dichlorobenzene-d4	11.615	152	180419	52.818	ug/L	0.00
Spiked Amount	50.000	Range 80 - 120	Recovery =	105.640%		
Target Compounds						
2) Dichlorodifluoromethane	1.127	85	5063	1.875	ug/L	95
3) Chloromethane	1.236	50	5010	1.648	ug/L	96
5) Vinyl chloride	1.307	62	5722	1.876	ug/L #	39
6) Bromomethane	1.519	94	3143	2.260	ug/L	100
8) Chloroethane	1.487	64	34702	18.740	ug/L #	52
9) Trichlorofluoromethane	1.751	101	6983	1.852	ug/L	99
10) 1,1,2-Trichloro-1,2,2-...	2.108	101	5023	2.351	ug/L	86
12) 1,1-Dichloroethene	2.111	96	5261	2.508	ug/L #	1
13) Acetone	2.185	43	5746	3.062	ug/L	56
14) Carbon disulfide	2.288	76	13764	2.052	ug/L	97
15) Methyl Acetate	2.436	43	4393	1.387	ug/L #	72
17) trans-1,2-Dichloroethene	2.757	96	4924	2.013	ug/L	97
18) Methyl tert-butyl Ether	2.764	73	16976	1.887	ug/L	96
19) 1,1-Dichloroethane	3.185	63	9342	1.869	ug/L	96
20) cis-1,2-Dichloroethene	3.908	96	5315	1.907	ug/L	88
23) Bromochloromethane	4.239	128	1112	0.821	ug/L #	80
27) 1,2-Dichloroethane	5.140	62	7704	2.061	ug/L	99
29) Cyclohexane	4.667	56	8510	1.843	ug/L	93
30) 1,1,1-Trichloroethane	4.600	97	8198	1.977	ug/L	97

Data Path : Z:\voasrv\HPCHEM1\MSVOA\_V\Data\VW101022\  
 Data File : VW028493.D  
 Acq On : 10 Oct 2022 10:49  
 Operator : SY/MD  
 Sample : N4519-01  
 Misc : 5.0mL/MSVOA\_V/WATER  
 ALS Vial : 5 Sample Multiplier: 1

Instrument :  
 MSVOA\_V  
 ClientSampleId :  
 MDL-WATER-QT4-2022-07

Quant Time: Oct 11 02:55:25 2022  
 Quant Method : Z:\voasrv\HPCHEM1\MSVOA\_V\Method\SFAMVLM100722WMA.M  
 Quant Title : VOC Analysis  
 QLast Update : Tue Oct 11 02:53:11 2022  
 Response via : Initial Calibration

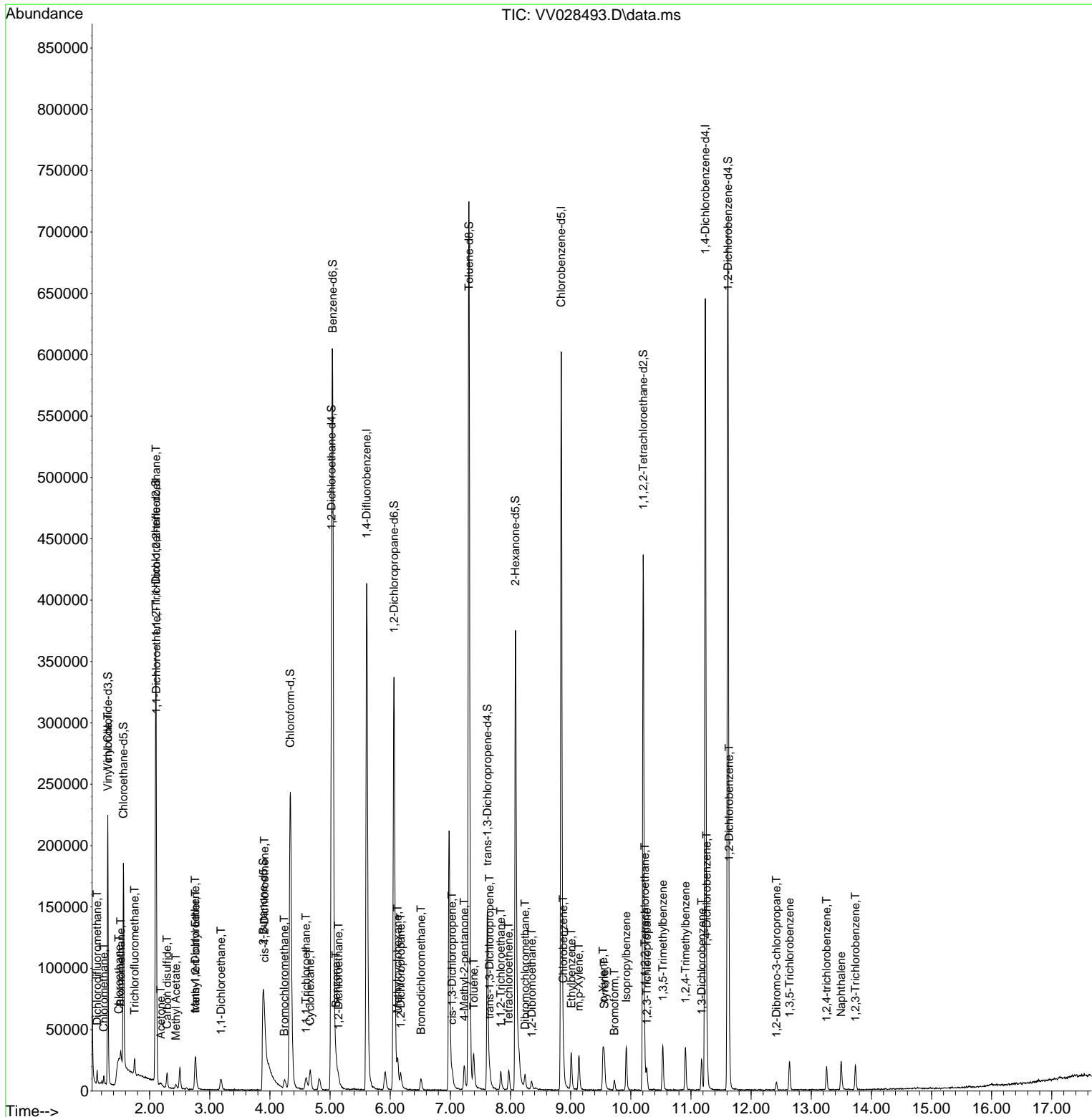
Compound	R.T.	QIon	Response	Conc	Units	Dev(Min)
33) Benzene	5.098	78	20132	1.907	ug/L	100
35) Methylcyclohexane	6.124	83	7845	1.723	ug/L #	87
37) 1,2-Dichloropropane	6.175	63	5111	1.806	ug/L #	93
38) Bromodichloromethane	6.513	83	6706	1.819	ug/L #	97
39) cis-1,3-Dichloropropene	7.030	75	8183	1.818	ug/L	92
40) 4-Methyl-2-pentanone	7.230	43	15031	3.114	ug/L	99
42) Toluene	7.387	91	20282	1.864	ug/L	99
44) trans-1,3-Dichloropropene	7.651	75	7970	1.845	ug/L	92
45) 1,1,2-Trichloroethane	7.837	97	4631	1.767	ug/L	95
46) Tetrachloroethene	7.969	164	3734	1.985	ug/L	90
49) Dibromochloromethane	8.243	129	5074	1.801	ug/L	94
50) 1,2-Dibromoethane	8.355	107	4813	1.773	ug/L	98
51) Chlorobenzene	8.876	112	13410	1.964	ug/L	98
52) Ethylbenzene	9.011	91	22389	1.888	ug/L	99
53) m,p-Xylene	9.136	106	8382	1.865	ug/L	97
54) o-Xylene	9.538	106	8472	1.882	ug/L	99
55) Styrene	9.561	104	13684	1.770	ug/L	91
57) 1,1,2,2-Tetrachloroethane	10.233	83	8374	1.865	ug/L #	99
59) Bromoform	9.728	173	3416	1.673	ug/L #	94
60) Isopropylbenzene	9.924	105	22199	1.869	ug/L	97
61) 1,2,3-Trichloropropane	10.268	75	6215	1.771	ug/L	97
62) 1,3,5-Trimethylbenzene	10.532	105	19453	1.891	ug/L	97
63) 1,2,4-Trimethylbenzene	10.908	105	18558	1.817	ug/L	99
64) 1,3-Dichlorobenzene	11.178	146	10485	2.018	ug/L	92
65) 1,4-Dichlorobenzene	11.265	146	10745	2.073	ug/L	97
67) 1,2-Dichlorobenzene	11.635	146	10861	2.071	ug/L	97
68) 1,2-Dibromo-3-chloropr...	12.422	75	1751	1.630	ug/L	91
69) 1,3,5-Trichlorobenzene	12.638	180	6744	1.709	ug/L	95
70) 1,2,4-trichlorobenzene	13.255	180	4930	1.417	ug/L	83
71) Naphthalene	13.496	128	18858	1.743	ug/L	96
72) 1,2,3-Trichlorobenzene	13.738	180	6006	1.771	ug/L	96

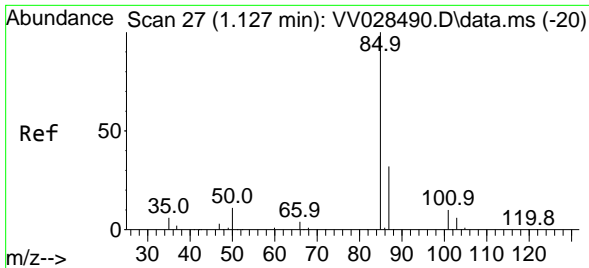
(#) = qualifier out of range (m) = manual integration (+) = signals summed

Data Path : Z:\voasrv\HPCHEM1\MSVOA\_V\Data\VV101022\  
 Data File : VV028493.D  
 Acq On : 10 Oct 2022 10:49  
 Operator : SY/MD  
 Sample : N4519-01  
 Misc : 5.0mL/MSVOA\_V/WATER  
 ALS Vial : 5 Sample Multiplier: 1

Instrument :  
 MSVOA\_V  
 ClientSampleId :  
 MDL-WATER-QT4-2022-07

Quant Time: Oct 11 02:55:25 2022  
 Quant Method : Z:\voasrv\HPCHEM1\MSVOA\_V\Method\SFAMVLM100722WMA.M  
 Quant Title : VOC Analysis  
 QLast Update : Tue Oct 11 02:53:11 2022  
 Response via : Initial Calibration

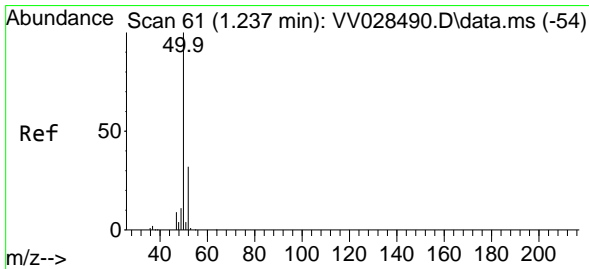
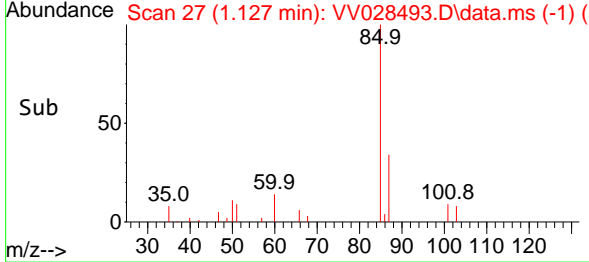
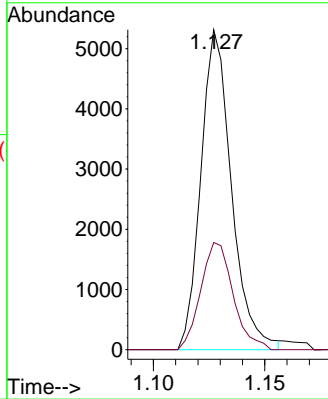
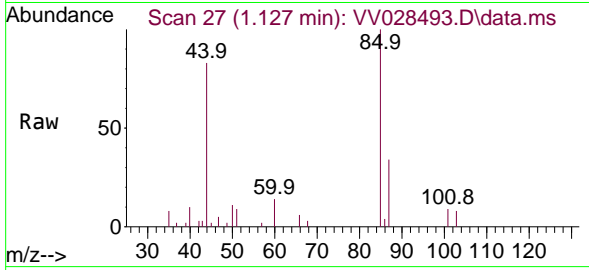




#2  
 Dichlorodifluoromethane  
 Concen: 1.875 ug/L  
 RT: 1.127 min Scan# 21  
 Delta R.T. -0.000 min  
 Lab File: VV028493.D  
 Acq: 10 Oct 2022 10:49

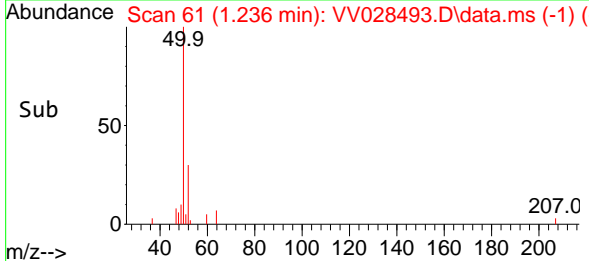
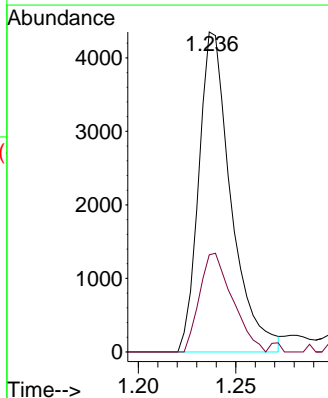
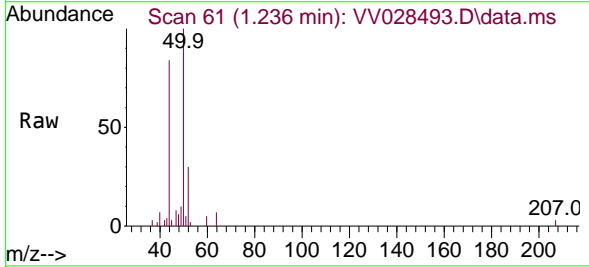
Instrument : MSVOA\_V  
 ClientSampleId : MDL-WATER-QT4-2022-07

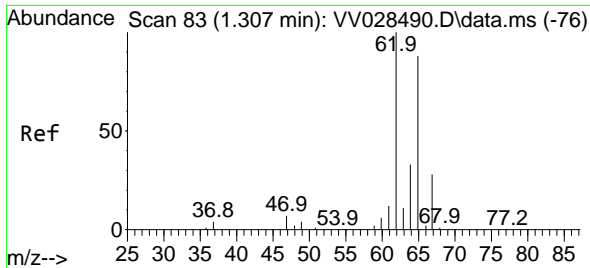
Tgt Ion: 85 Resp: 5063  
 Ion Ratio Lower Upper  
 85 100  
 87 35.5 25.9 38.9



#3  
 Chloromethane  
 Concen: 1.648 ug/L  
 RT: 1.236 min Scan# 61  
 Delta R.T. -0.000 min  
 Lab File: VV028493.D  
 Acq: 10 Oct 2022 10:49

Tgt Ion: 50 Resp: 5010  
 Ion Ratio Lower Upper  
 50 100  
 52 30.4 22.7 42.3

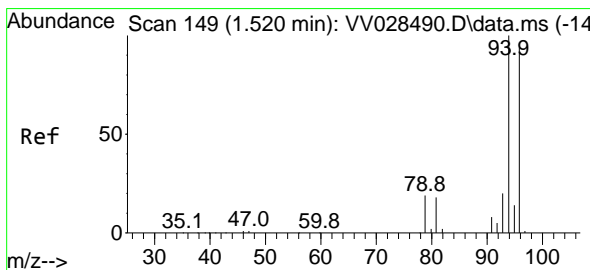
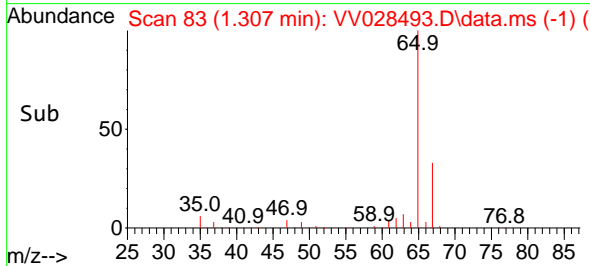
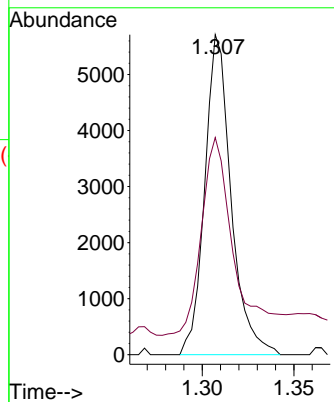
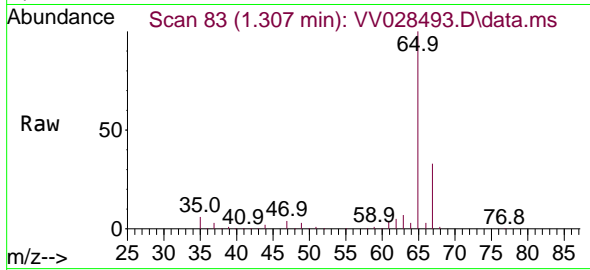




#5  
 Vinyl chloride  
 Concen: 1.876 ug/L  
 RT: 1.307 min Scan# 81  
 Delta R.T. -0.000 min  
 Lab File: VV028493.D  
 Acq: 10 Oct 2022 10:49

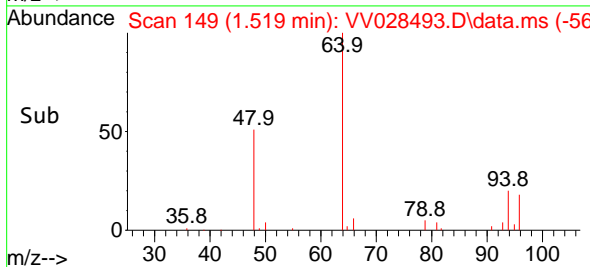
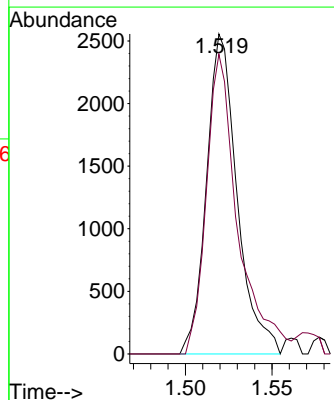
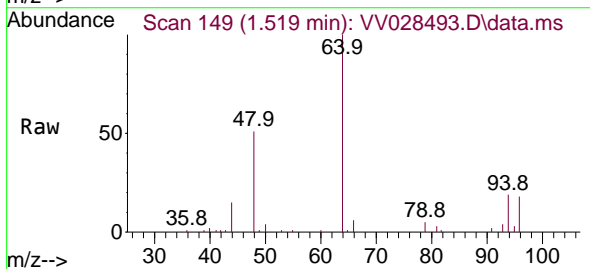
Instrument : MSVOA\_V  
 ClientSampleId : VV028493.D  
 MDL-WATER-QT4-2022-07

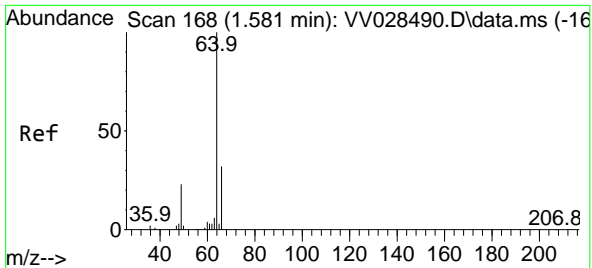
Tgt Ion: 62 Resp: 5722  
 Ion Ratio Lower Upper  
 62 100  
 64 67.8 23.3 43.3#



#6  
 Bromomethane  
 Concen: 2.260 ug/L  
 RT: 1.519 min Scan# 149  
 Delta R.T. -0.000 min  
 Lab File: VV028493.D  
 Acq: 10 Oct 2022 10:49

Tgt Ion: 94 Resp: 3143  
 Ion Ratio Lower Upper  
 94 100  
 96 93.7 65.5 121.6

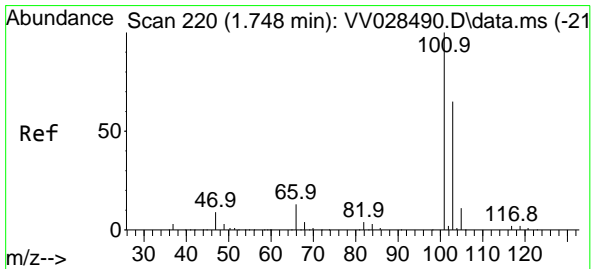
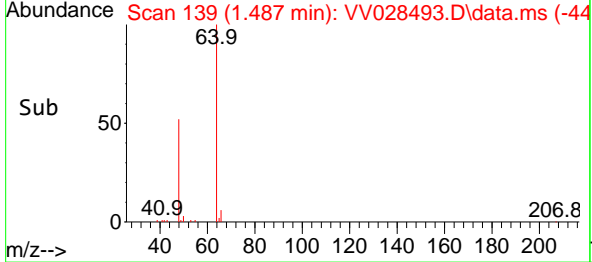
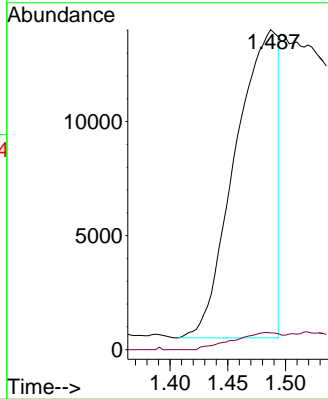
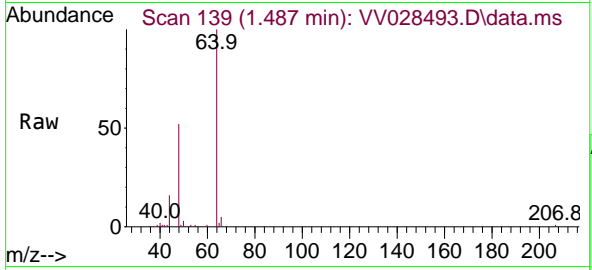




#8  
 Chloroethane  
 Concen: 18.740 ug/L  
 RT: 1.487 min Scan# 111  
 Delta R.T. -0.093 min  
 Lab File: VV028493.D  
 Acq: 10 Oct 2022 10:49

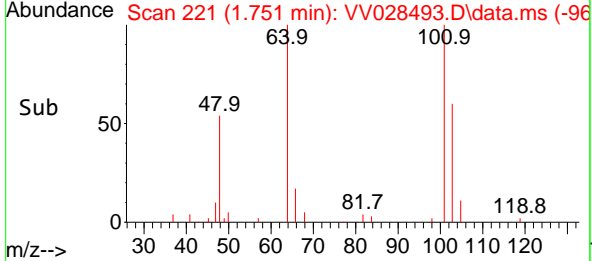
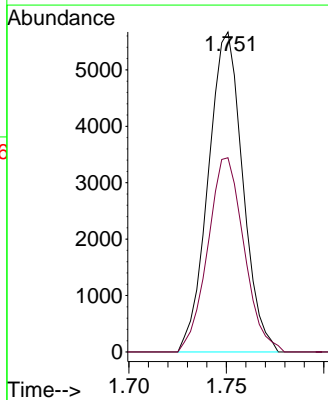
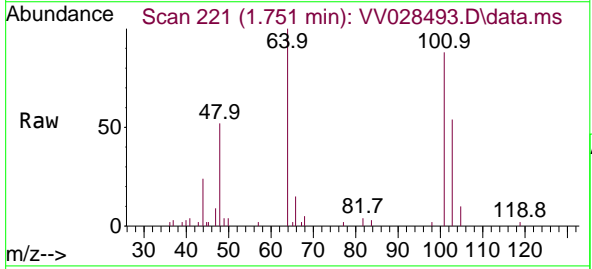
Instrument : MSVOA\_V  
 ClientSampleId : MDL-WATER-QT4-2022-07

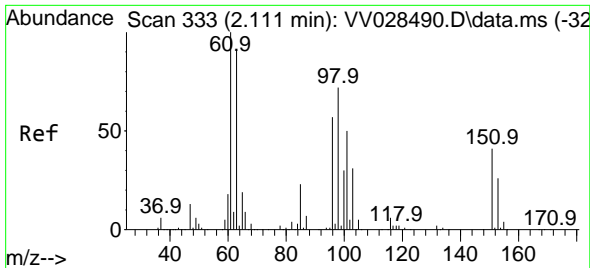
Tgt Ion: 64 Resp: 34702  
 Ion Ratio Lower Upper  
 64 100  
 66 5.3 22.2 41.2#



#9  
 Trichlorofluoromethane  
 Concen: 1.852 ug/L  
 RT: 1.751 min Scan# 221  
 Delta R.T. 0.003 min  
 Lab File: VV028493.D  
 Acq: 10 Oct 2022 10:49

Tgt Ion:101 Resp: 6983  
 Ion Ratio Lower Upper  
 101 100  
 103 63.8 50.7 76.1

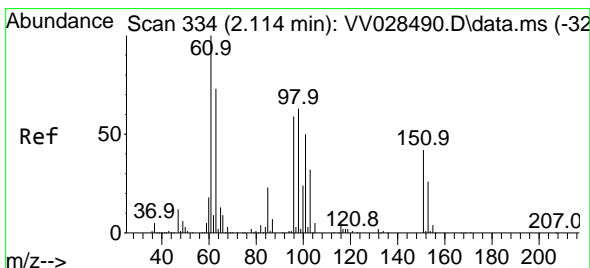
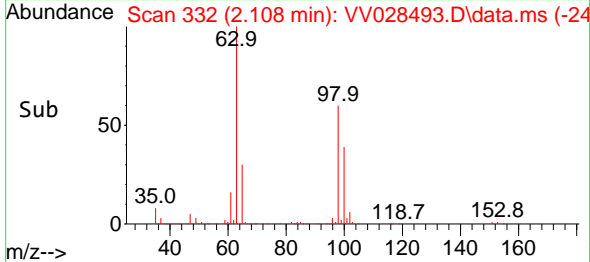
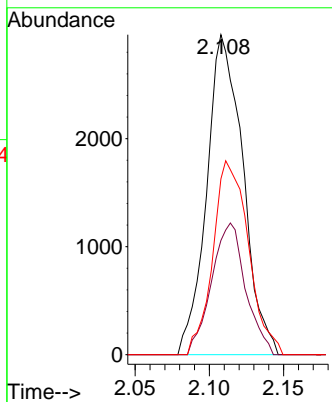
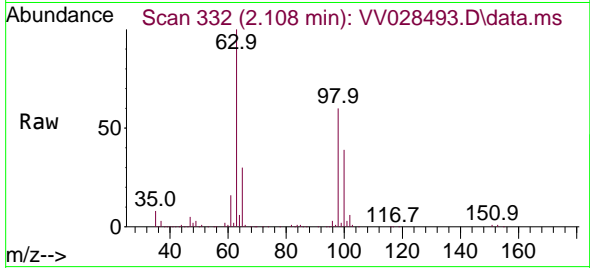




#10  
 1,1,2-Trichloro-1,2,2-trifluoroethane  
 Concen: 2.351 ug/L  
 RT: 2.108 min Scan# 311  
 Delta R.T. -0.003 min  
 Lab File: VV028493.D  
 Acq: 10 Oct 2022 10:49

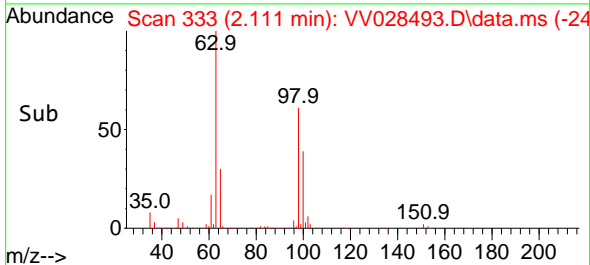
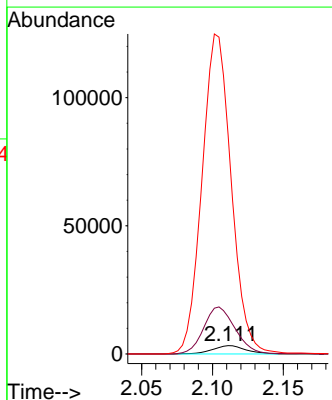
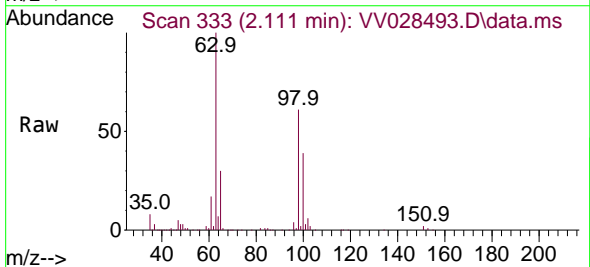
Instrument : MSVOA\_V  
 ClientSampleId : MDL-WATER-QT4-2022-07

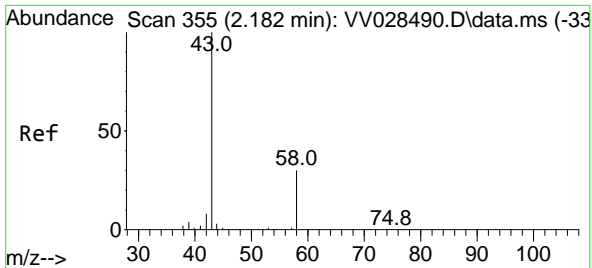
Tgt Ion	Resp	Lower	Upper
101	5023		
85	38.7	34.9	52.3
151	59.5	59.2	88.8



#12  
 1,1-Dichloroethene  
 Concen: 2.508 ug/L  
 RT: 2.111 min Scan# 333  
 Delta R.T. -0.003 min  
 Lab File: VV028493.D  
 Acq: 10 Oct 2022 10:49

Tgt Ion	Resp	Lower	Upper
96	5261		
61	446.0	125.6	233.2#
63	2633.9	100.0	185.6#

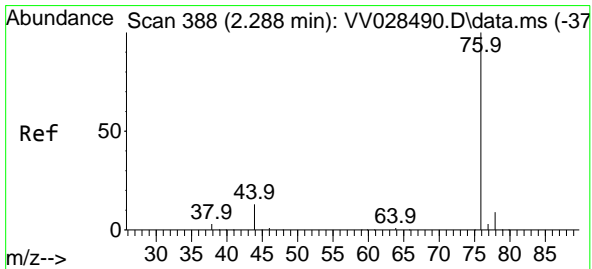
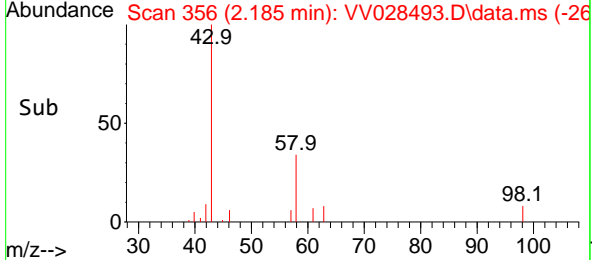
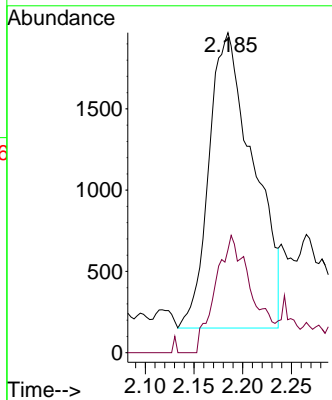
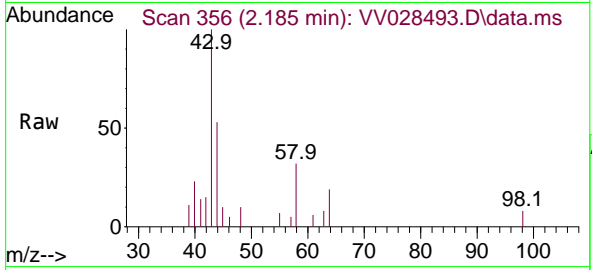




#13  
 Acetone  
 Concen: 3.062 ug/L  
 RT: 2.185 min Scan# 356  
 Delta R.T. 0.003 min  
 Lab File: VV028493.D  
 Acq: 10 Oct 2022 10:49

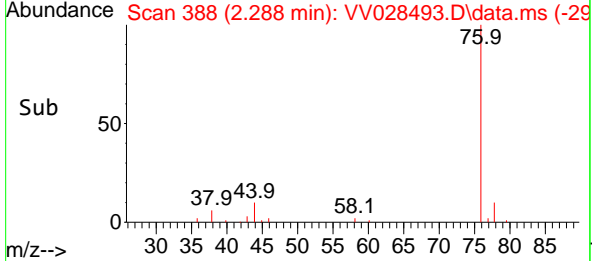
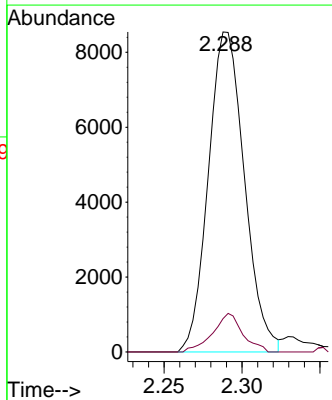
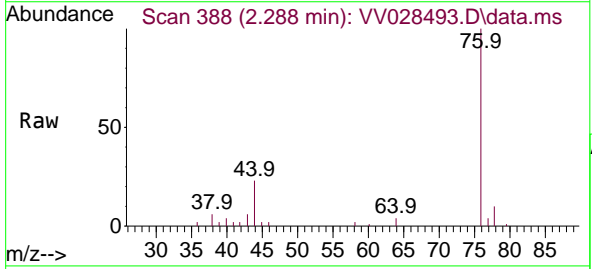
Instrument : MSVOA\_V  
 ClientSampleId : MDL-WATER-QT4-2022-07

Tgt Ion	Resp	Ion Ratio	Lower	Upper
43	5746	100		
58		2.2	0.0	47.0

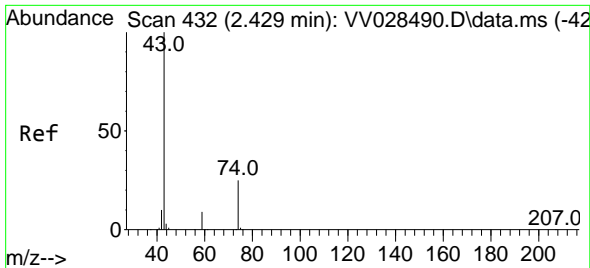


#14  
 Carbon disulfide  
 Concen: 2.052 ug/L  
 RT: 2.288 min Scan# 388  
 Delta R.T. -0.000 min  
 Lab File: VV028493.D  
 Acq: 10 Oct 2022 10:49

Tgt Ion	Resp	Ion Ratio	Lower	Upper
76	13764	100		
78		10.4	7.4	11.0

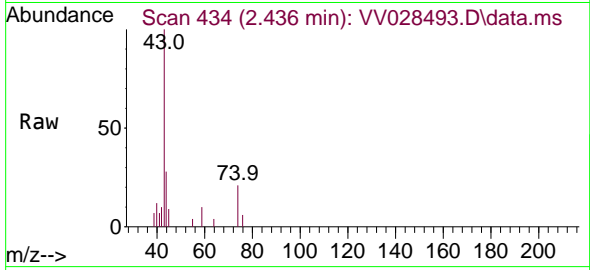




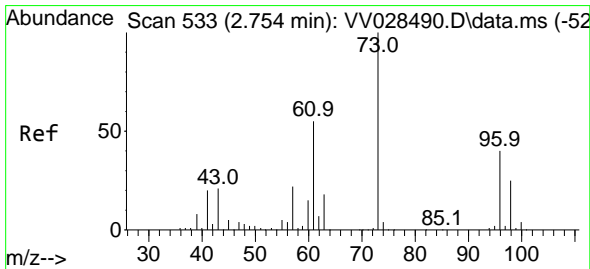
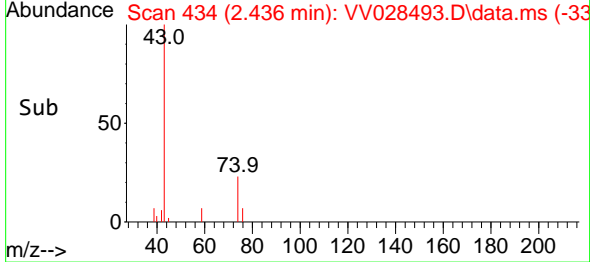
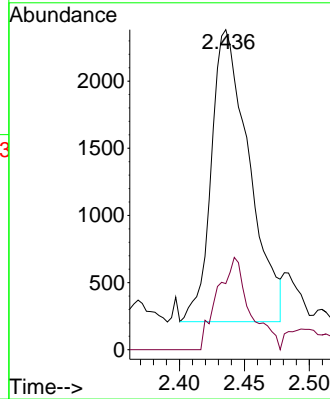


#15  
 Methyl Acetate  
 Concen: 1.387 ug/L  
 RT: 2.436 min Scan# 41  
 Delta R.T. 0.006 min  
 Lab File: VV028493.D  
 Acq: 10 Oct 2022 10:49

Instrument : MSVOA\_V  
 ClientSampleId : MDL-WATER-QT4-2022-07

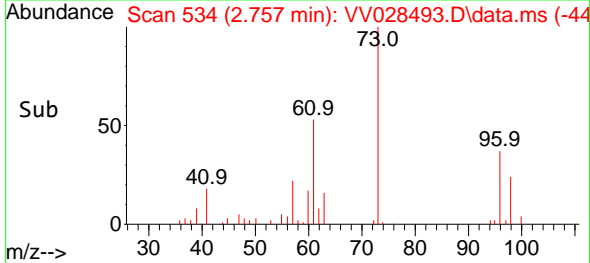
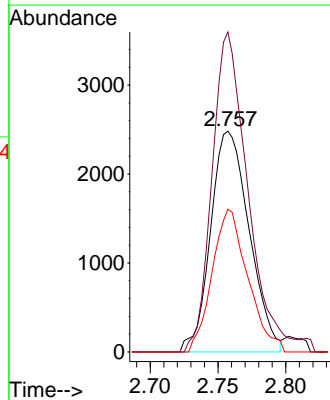
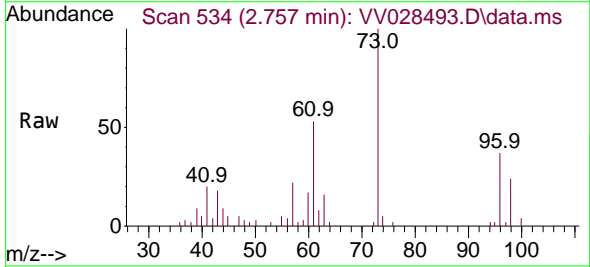


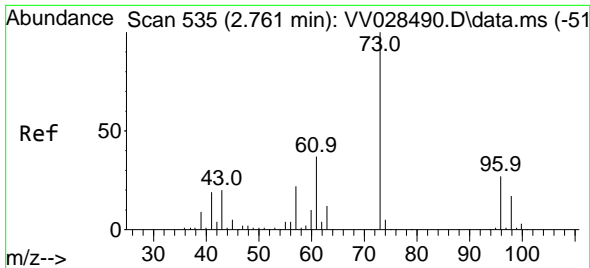
Tgt Ion: 43 Resp: 4393  
 Ion Ratio Lower Upper  
 43 100  
 74 9.7 18.8 28.2#



#17  
 trans-1,2-Dichloroethene  
 Concen: 2.013 ug/L  
 RT: 2.757 min Scan# 534  
 Delta R.T. 0.003 min  
 Lab File: VV028493.D  
 Acq: 10 Oct 2022 10:49

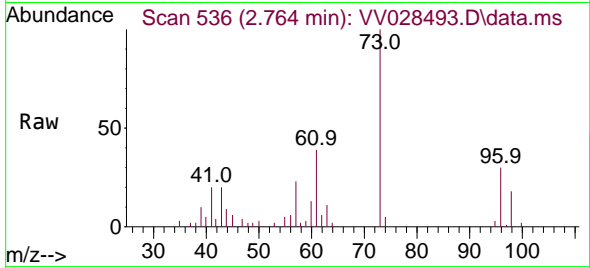
Tgt Ion: 96 Resp: 4924  
 Ion Ratio Lower Upper  
 96 100  
 61 145.0 104.8 194.6  
 98 64.7 44.5 82.7



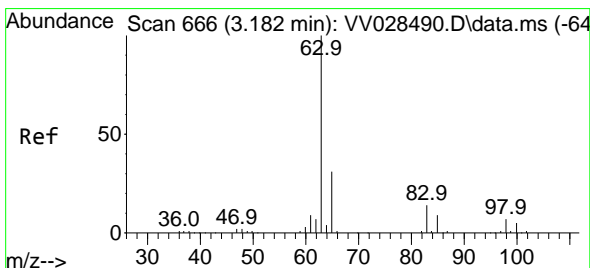
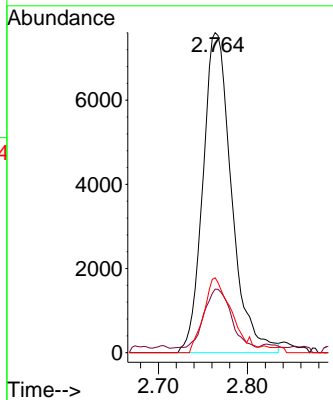
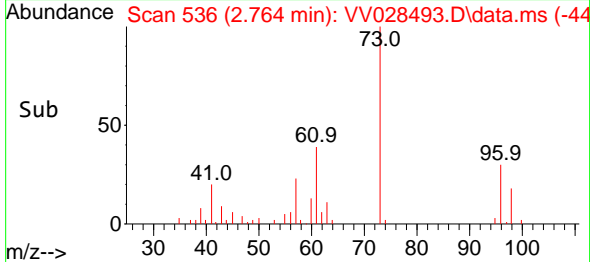


#18  
 Methyl tert-butyl Ether  
 Concen: 1.887 ug/L  
 RT: 2.764 min Scan# 51  
 Delta R.T. 0.003 min  
 Lab File: VV028493.D  
 Acq: 10 Oct 2022 10:49

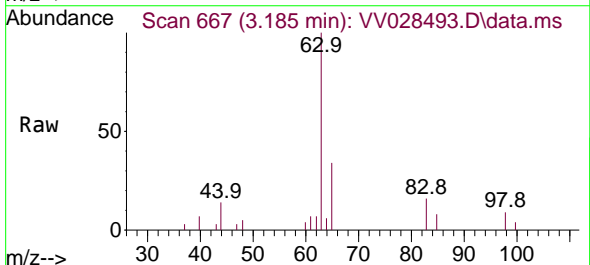
Instrument : MSVOA\_V  
 ClientSampleId : MDL-WATER-QT4-2022-07



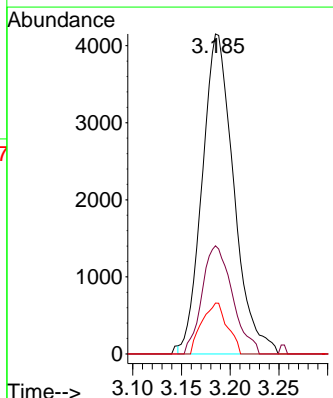
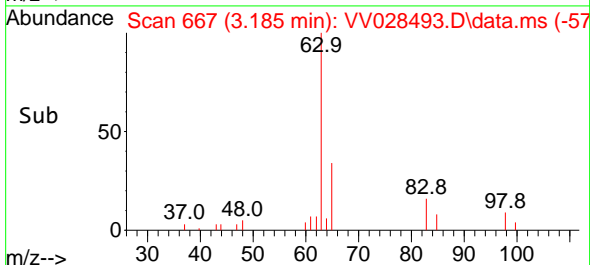
Tgt Ion	Resp	Lower	Upper
73	16976		
43	16.7	15.6	23.4
57	21.6	18.2	27.4

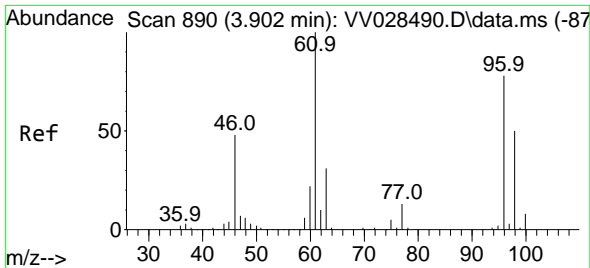


#19  
 1,1-Dichloroethane  
 Concen: 1.869 ug/L  
 RT: 3.185 min Scan# 667  
 Delta R.T. 0.003 min  
 Lab File: VV028493.D  
 Acq: 10 Oct 2022 10:49



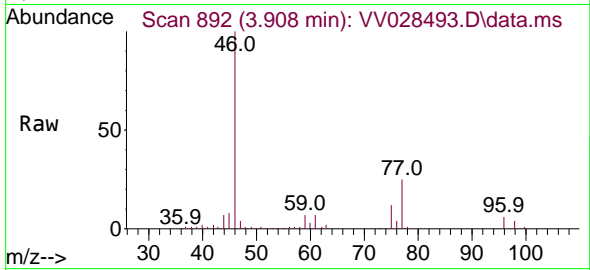
Tgt Ion	Resp	Lower	Upper
63	9342		
65	33.8	22.6	42.0
83	15.9	9.2	17.0



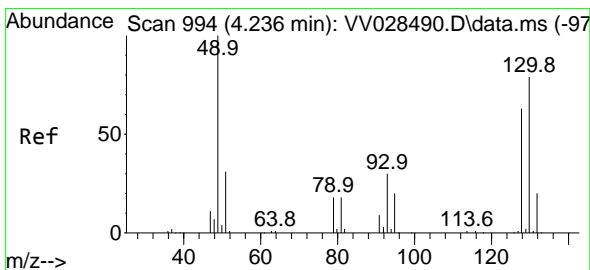
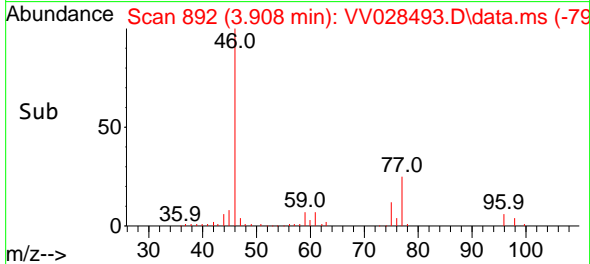
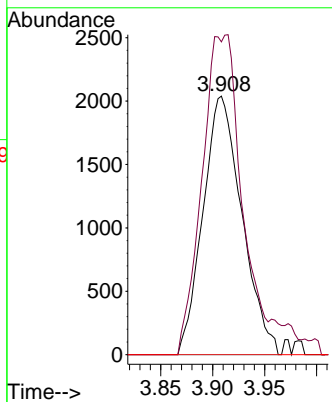


#20  
 cis-1,2-Dichloroethene  
 Concen: 1.907 ug/L  
 RT: 3.908 min Scan# 891  
 Delta R.T. 0.006 min  
 Lab File: VV028493.D  
 Acq: 10 Oct 2022 10:49

Instrument : MSVOA\_V  
 ClientSampleId : MDL-WATER-QT4-2022-07

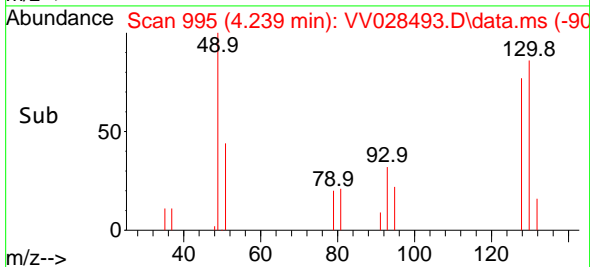
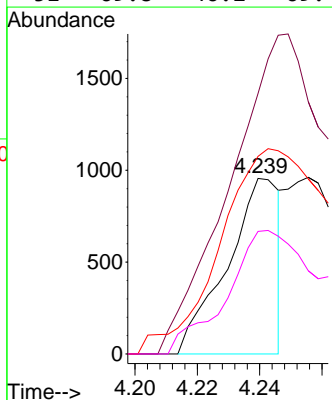
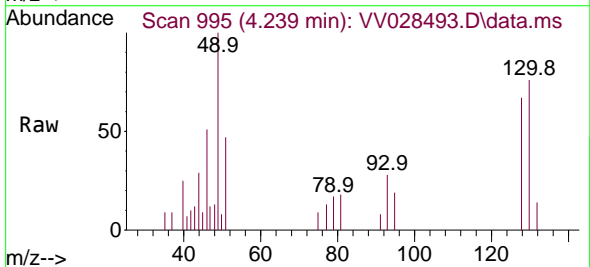


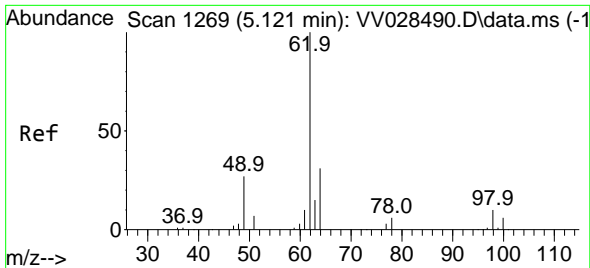
Tgt Ion: 96 Resp: 5315  
 Ion Ratio Lower Upper  
 96 100  
 61 121.0 95.0 176.4  
 68 0.0 0.0 0.0



#23  
 Bromochloromethane  
 Concen: 0.821 ug/L  
 RT: 4.239 min Scan# 995  
 Delta R.T. 0.003 min  
 Lab File: VV028493.D  
 Acq: 10 Oct 2022 10:49

Tgt Ion:128 Resp: 1112  
 Ion Ratio Lower Upper  
 128 100  
 49 148.3 130.6 242.6  
 130 112.6 90.0 167.2  
 51 69.8 46.2 69.4#

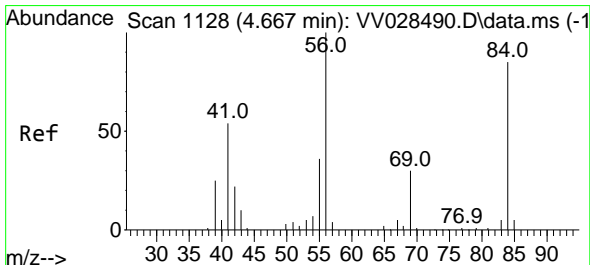
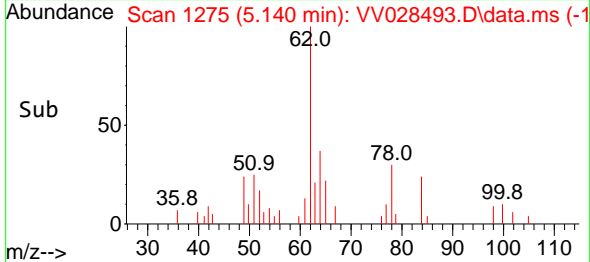
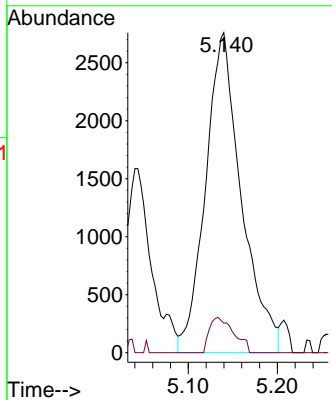
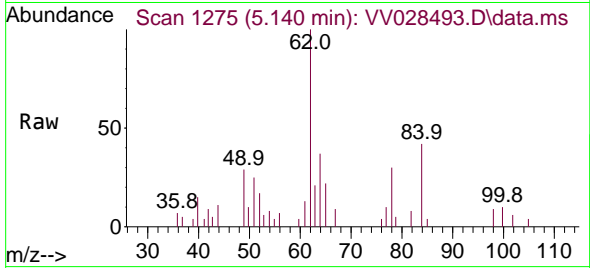




#27  
 1,2-Dichloroethane  
 Concen: 2.061 ug/L  
 RT: 5.140 min Scan# 1127  
 Delta R.T. 0.019 min  
 Lab File: VV028493.D  
 Acq: 10 Oct 2022 10:49

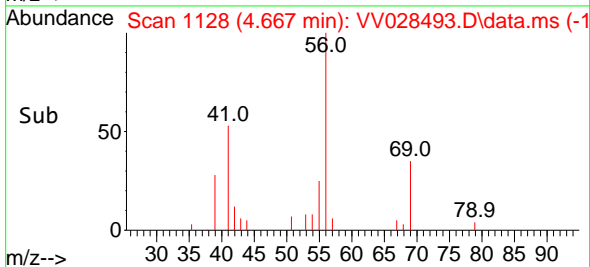
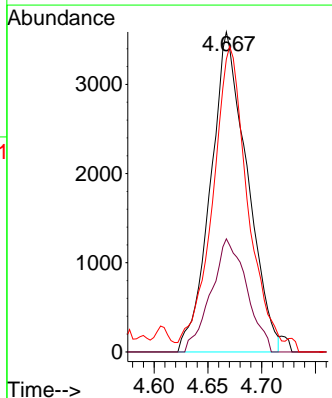
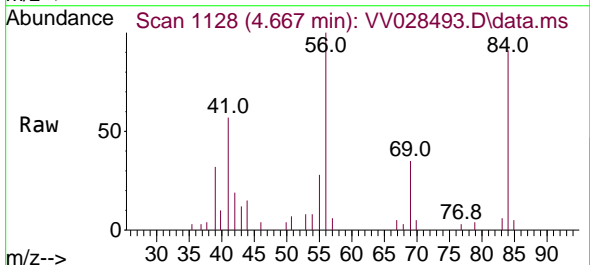
Instrument : MSVOA\_V  
 ClientSampleId : MDL-WATER-QT4-2022-07

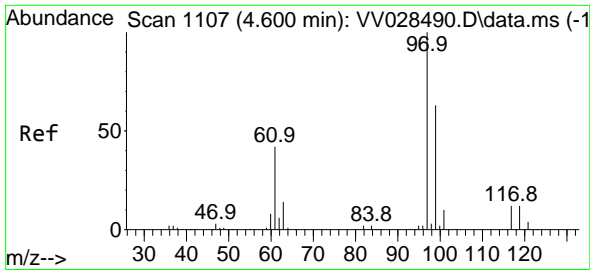
Tgt Ion: 62 Resp: 7704  
 Ion Ratio Lower Upper  
 62 100  
 98 9.2 7.6 11.4



#29  
 Cyclohexane  
 Concen: 1.843 ug/L  
 RT: 4.667 min Scan# 1128  
 Delta R.T. -0.000 min  
 Lab File: VV028493.D  
 Acq: 10 Oct 2022 10:49

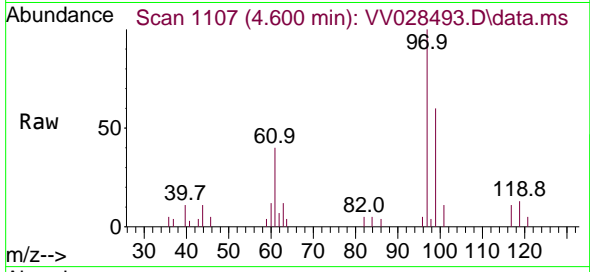
Tgt Ion: 56 Resp: 8510  
 Ion Ratio Lower Upper  
 56 100  
 69 34.2 23.0 34.6  
 84 88.0 65.8 98.8



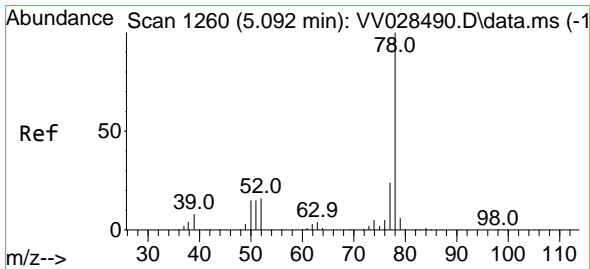
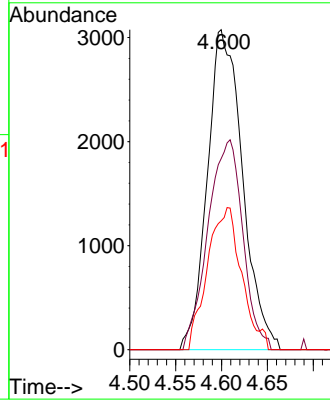
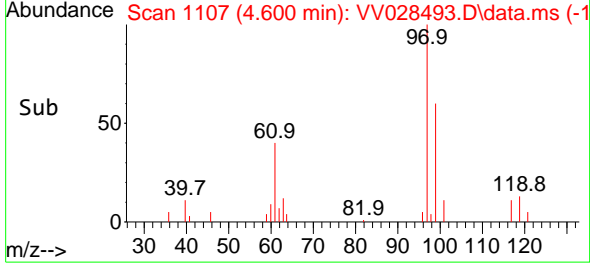


#30  
 1,1,1-Trichloroethane  
 Concen: 1.977 ug/L  
 RT: 4.600 min Scan# 1117  
 Delta R.T. -0.000 min  
 Lab File: VV028493.D  
 Acq: 10 Oct 2022 10:49

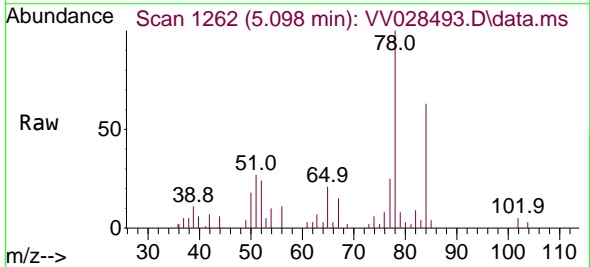
Instrument : MSVOA\_V  
 ClientSampleId : MDL-WATER-QT4-2022-07



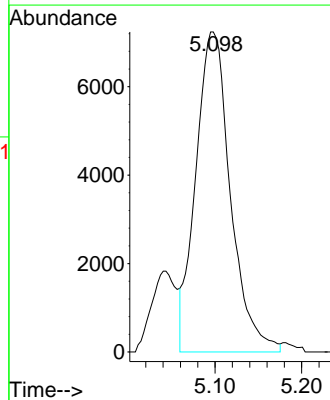
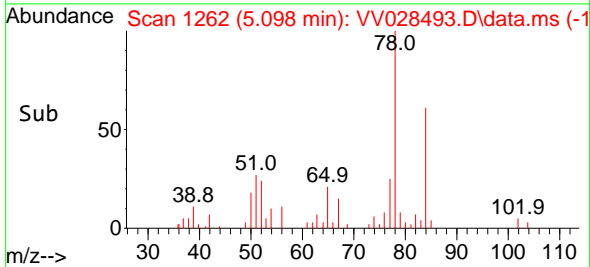
Tgt Ion: 97 Resp: 8198  
 Ion Ratio Lower Upper  
 97 100  
 99 65.0 50.2 75.2  
 61 42.2 35.8 53.6

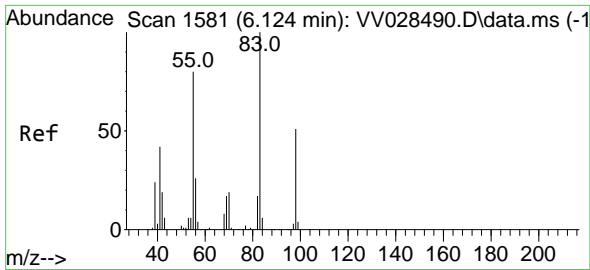


#33  
 Benzene  
 Concen: 1.907 ug/L  
 RT: 5.098 min Scan# 1262  
 Delta R.T. 0.006 min  
 Lab File: VV028493.D  
 Acq: 10 Oct 2022 10:49



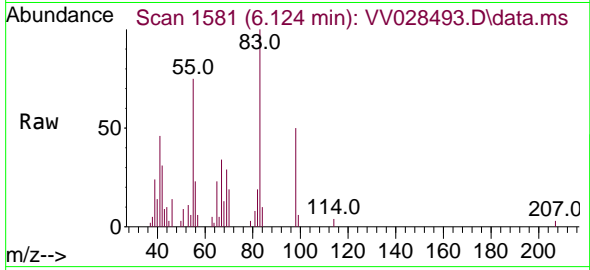
Tgt Ion: 78 Resp: 20132



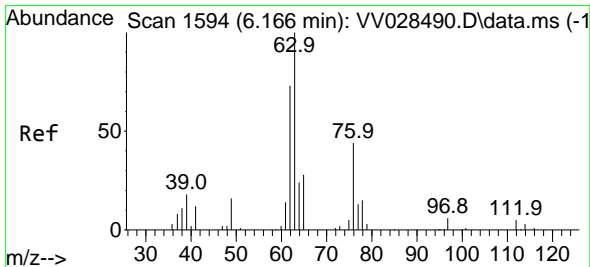
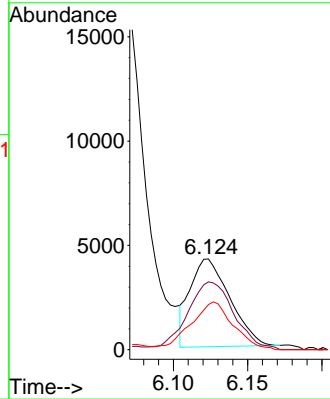
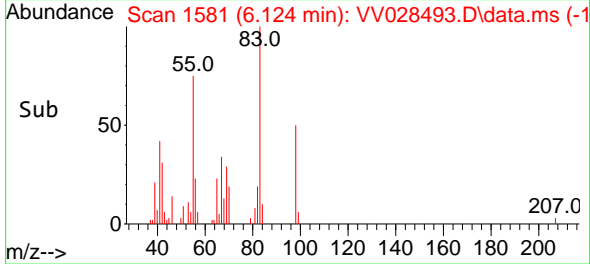


#35  
 Methylcyclohexane  
 Concen: 1.723 ug/L  
 RT: 6.124 min Scan# 1581  
 Delta R.T. -0.000 min  
 Lab File: VV028493.D  
 Acq: 10 Oct 2022 10:49

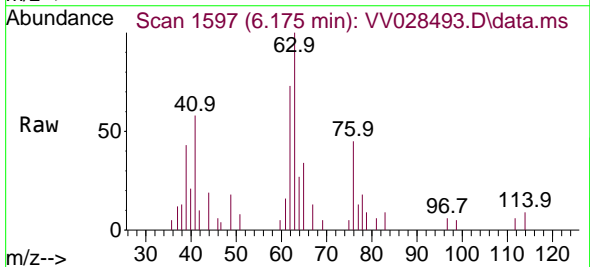
Instrument : MSVOA\_V  
 ClientSampleId : MDL-WATER-QT4-2022-07



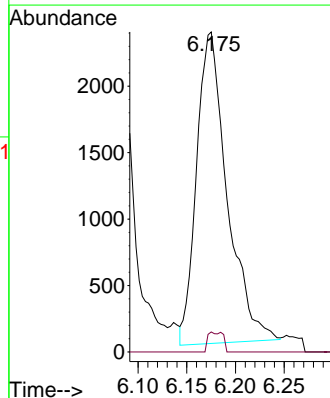
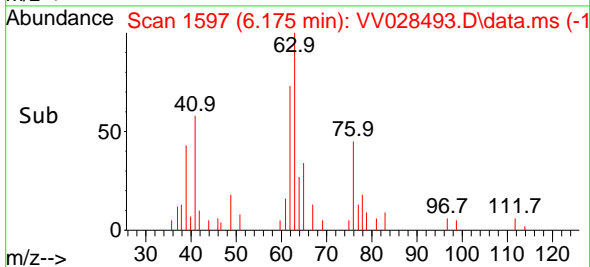
Tgt Ion: 83 Resp: 7845  
 Ion Ratio Lower Upper  
 83 100  
 55 89.9 63.7 95.5  
 98 58.3 38.2 57.2#

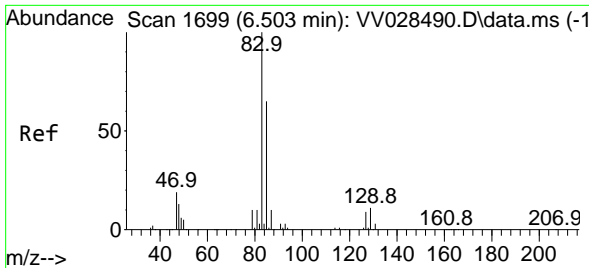


#37  
 1,2-Dichloropropane  
 Concen: 1.806 ug/L  
 RT: 6.175 min Scan# 1597  
 Delta R.T. 0.009 min  
 Lab File: VV028493.D  
 Acq: 10 Oct 2022 10:49



Tgt Ion: 63 Resp: 5111  
 Ion Ratio Lower Upper  
 63 100  
 112 2.1 3.5 5.3#

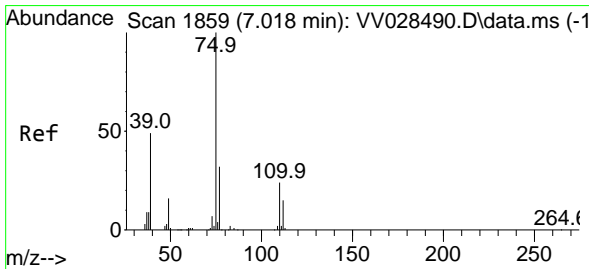
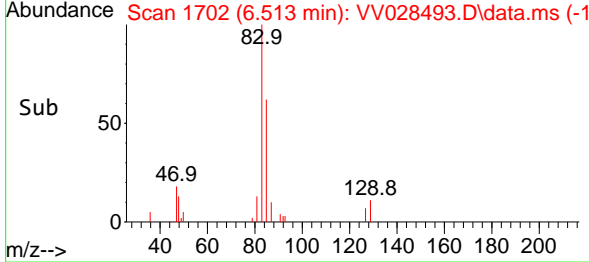
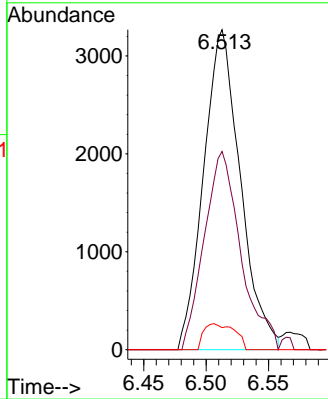
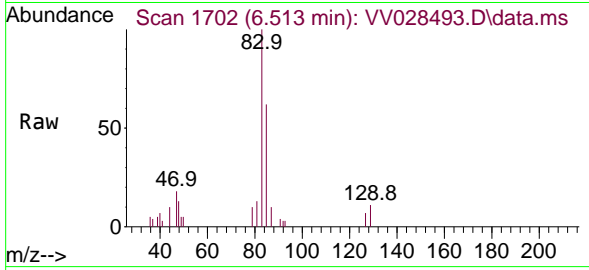




#38  
 Bromodichloromethane  
 Concen: 1.819 ug/L  
 RT: 6.513 min Scan# 11  
 Delta R.T. 0.009 min  
 Lab File: VV028493.D  
 Acq: 10 Oct 2022 10:49

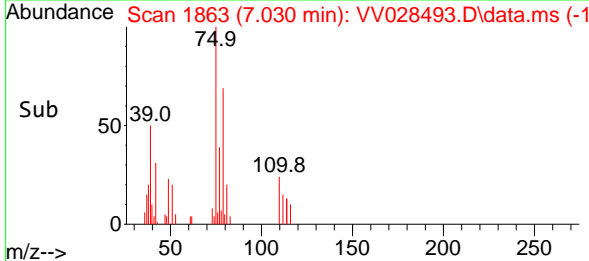
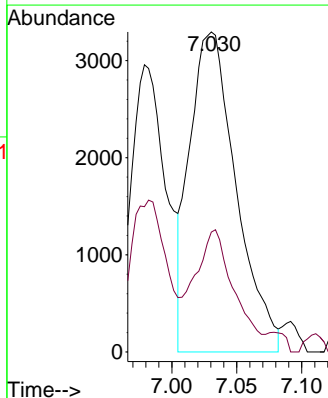
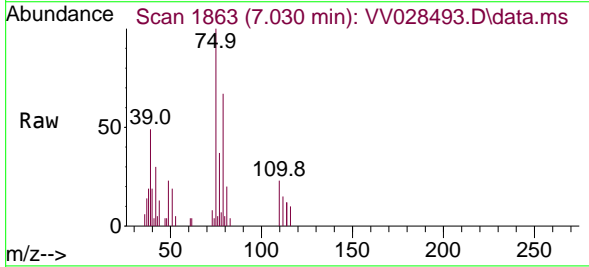
Instrument : MSVOA\_V  
 ClientSampleId : VV028493.D  
 MDL-WATER-QT4-2022-07

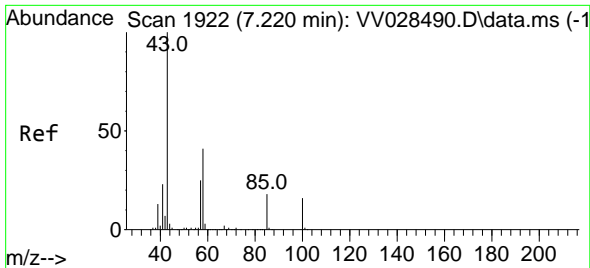
Tgt Ion	Resp	Lower	Upper
83	6706		
83	100		
85	62.0	45.1	83.7
127	6.9	7.0	10.4#



#39  
 cis-1,3-Dichloropropene  
 Concen: 1.818 ug/L  
 RT: 7.030 min Scan# 1863  
 Delta R.T. 0.013 min  
 Lab File: VV028493.D  
 Acq: 10 Oct 2022 10:49

Tgt Ion	Resp	Lower	Upper
75	8183		
75	100		
77	37.5	23.2	43.0

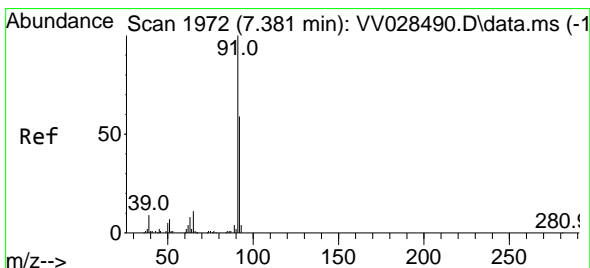
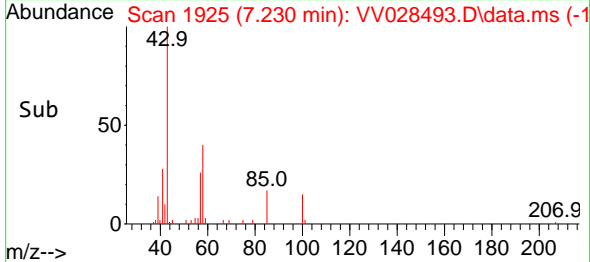
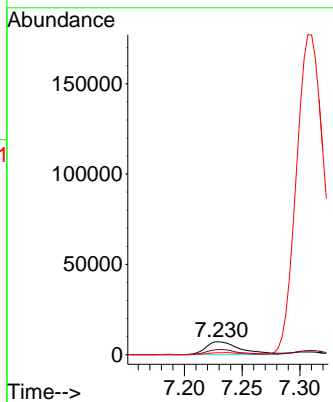
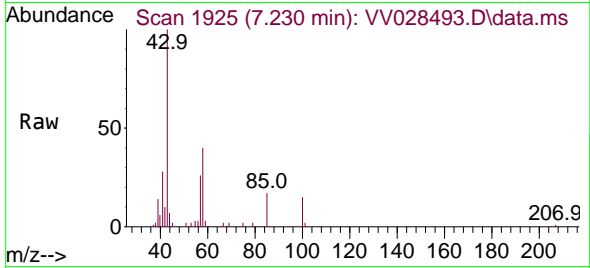




#40  
 4-Methyl-2-pentanone  
 Concen: 3.114 ug/L  
 RT: 7.230 min Scan# 1925  
 Delta R.T. 0.009 min  
 Lab File: VV028493.D  
 Acq: 10 Oct 2022 10:49

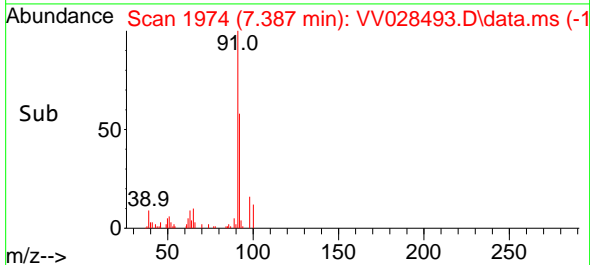
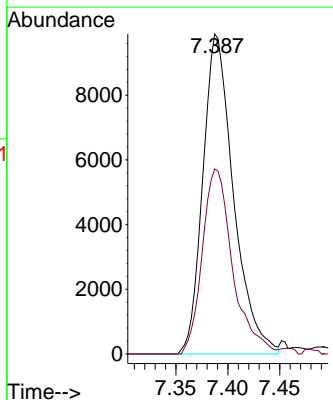
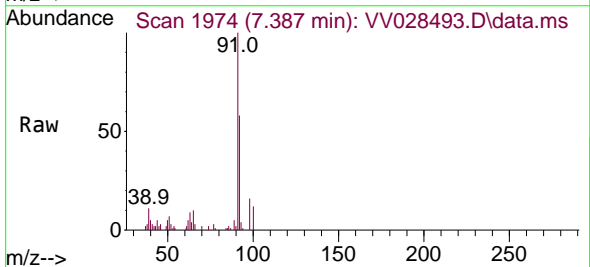
Instrument : MSVOA\_V  
 ClientSampleId : MDL-WATER-QT4-2022-07

Tgt Ion	Resp	Lower	Upper
43	15031		
58	38.6	31.3	46.9
100	15.0	11.5	17.3

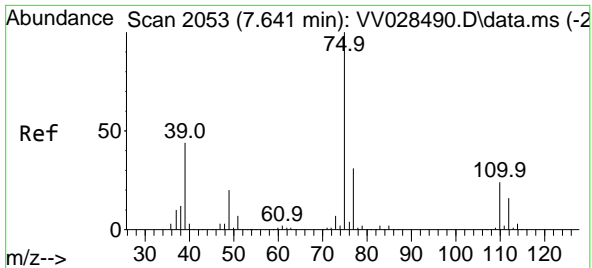


#42  
 Toluene  
 Concen: 1.864 ug/L  
 RT: 7.387 min Scan# 1974  
 Delta R.T. 0.006 min  
 Lab File: VV028493.D  
 Acq: 10 Oct 2022 10:49

Tgt Ion	Resp	Lower	Upper
91	20282		
92	57.8	40.9	76.0



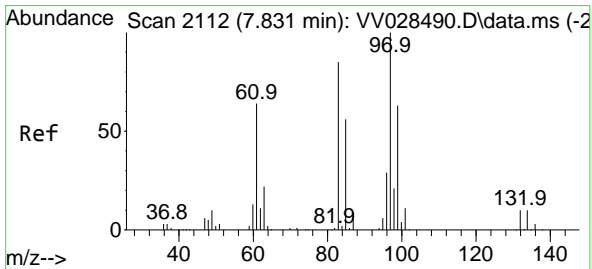
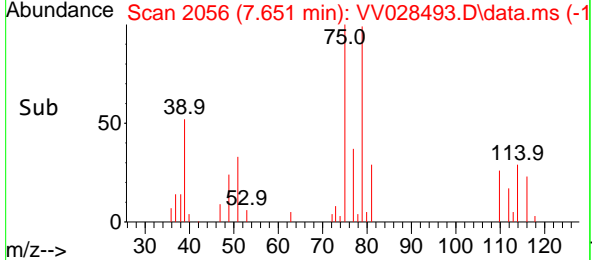
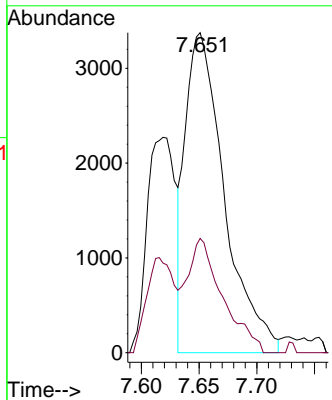
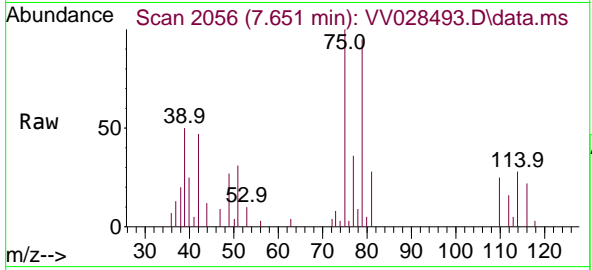




#44  
 trans-1,3-Dichloropropene  
 Concen: 1.845 ug/L  
 RT: 7.651 min Scan# 2056  
 Delta R.T. 0.009 min  
 Lab File: VV028493.D  
 Acq: 10 Oct 2022 10:49

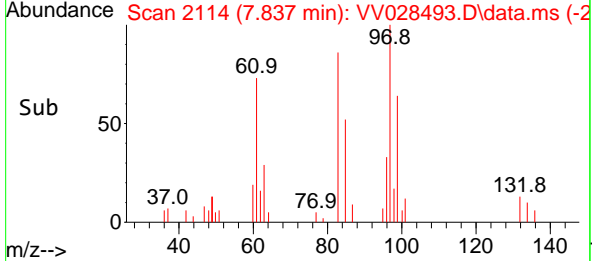
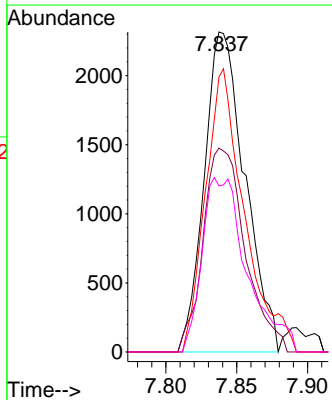
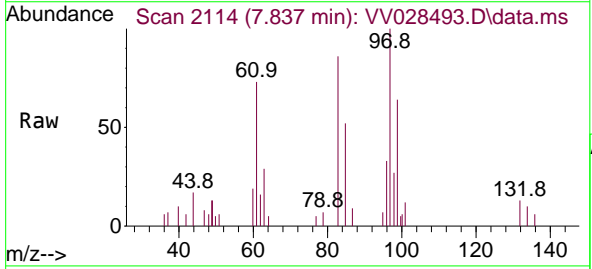
Instrument : MSVOA\_V  
 ClientSampleId : MDL-WATER-QT4-2022-07

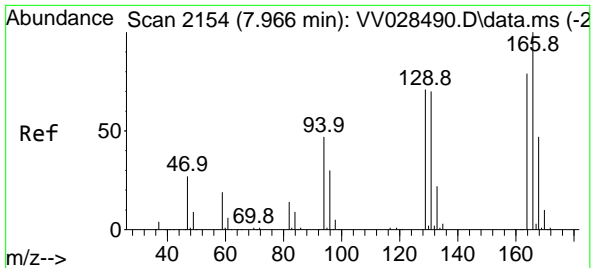
Tgt Ion: 75 Resp: 7970  
 Ion Ratio Lower Upper  
 75 100  
 77 35.7 21.8 40.4



#45  
 1,1,2-Trichloroethane  
 Concen: 1.767 ug/L  
 RT: 7.837 min Scan# 2114  
 Delta R.T. 0.006 min  
 Lab File: VV028493.D  
 Acq: 10 Oct 2022 10:49

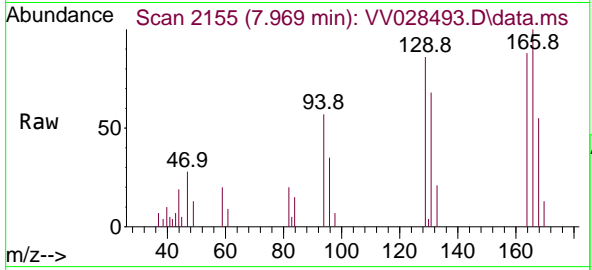
Tgt Ion: 97 Resp: 4631  
 Ion Ratio Lower Upper  
 97 100  
 99 68.9 43.9 81.5  
 83 86.0 61.9 114.9  
 85 51.9 39.1 72.5





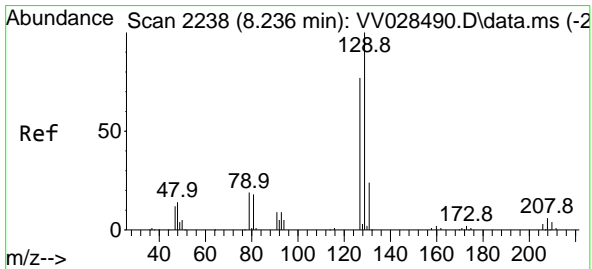
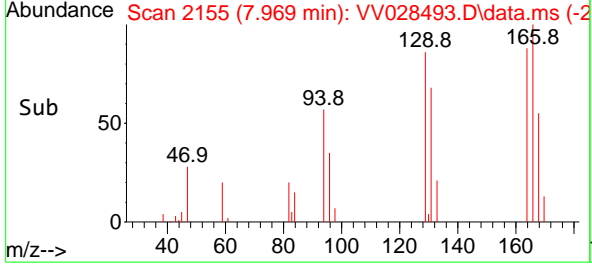
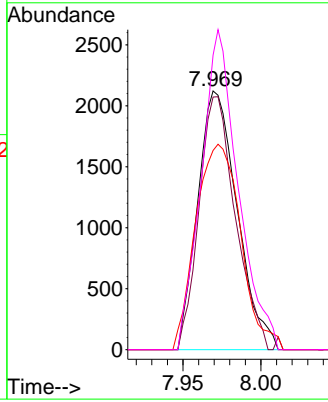
#46  
 Tetrachloroethene  
 Concen: 1.985 ug/L  
 RT: 7.969 min Scan# 2155  
 Delta R.T. 0.003 min  
 Lab File: VV028493.D  
 Acq: 10 Oct 2022 10:49

Instrument : MSVOA\_V  
 ClientSampleId : MDL-WATER-QT4-2022-07



Tgt Ion:164 Resp: 3734

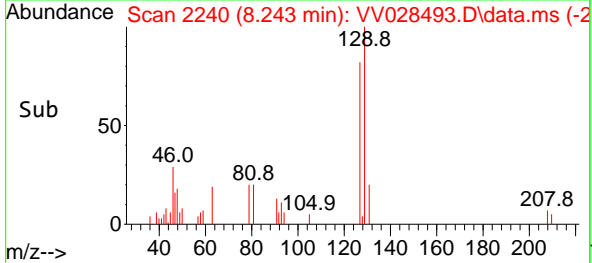
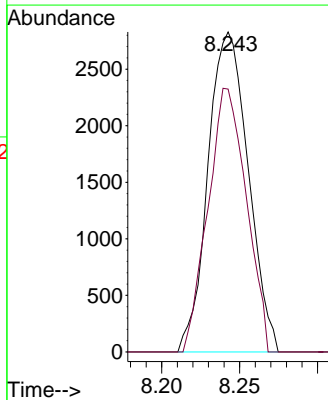
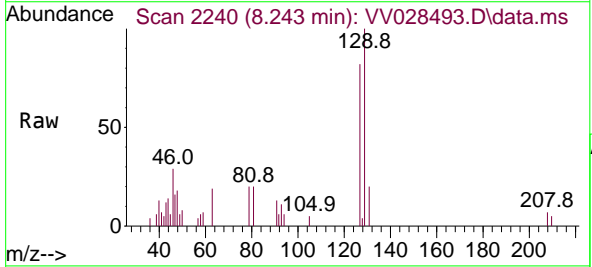
Ion	Ratio	Lower	Upper
164	100		
129	97.6	67.4	125.2
131	77.0	65.2	121.2
166	113.9	88.5	164.4

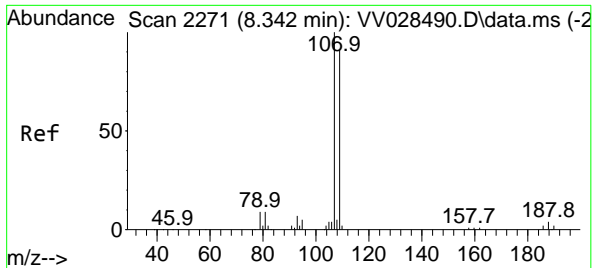


#49  
 Dibromochloromethane  
 Concen: 1.801 ug/L  
 RT: 8.243 min Scan# 2240  
 Delta R.T. 0.006 min  
 Lab File: VV028493.D  
 Acq: 10 Oct 2022 10:49

Tgt Ion:129 Resp: 5074

Ion	Ratio	Lower	Upper
129	100		
127	82.1	53.6	99.6

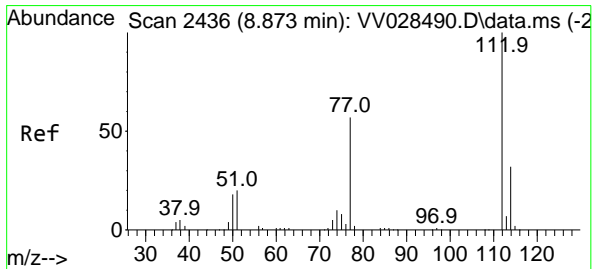
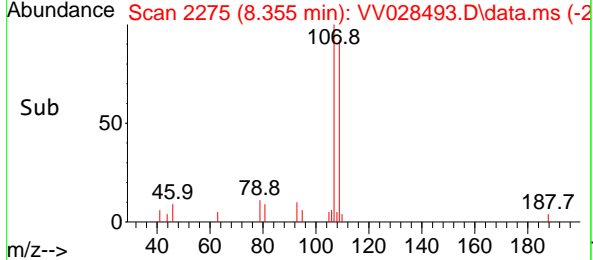
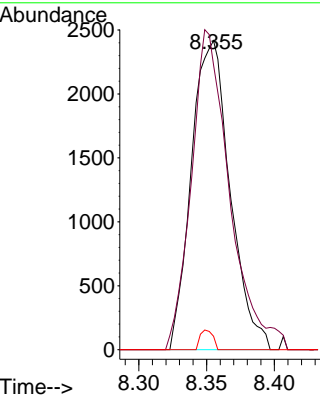
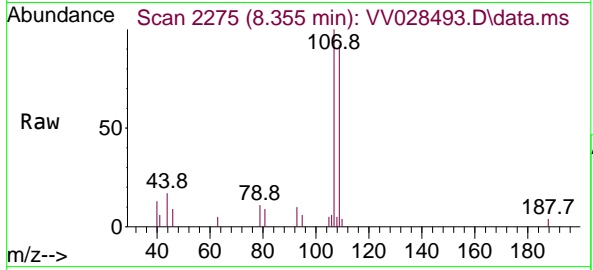




#50  
 1,2-Dibromoethane  
 Concen: 1.773 ug/L  
 RT: 8.355 min Scan# 21  
 Delta R.T. 0.013 min  
 Lab File: VV028493.D  
 Acq: 10 Oct 2022 10:49

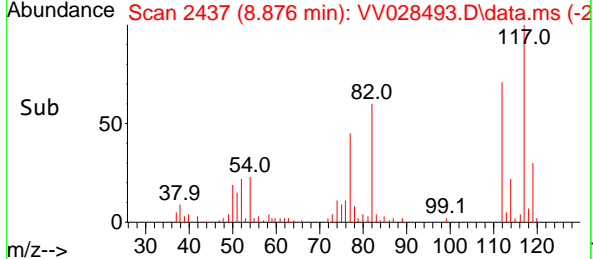
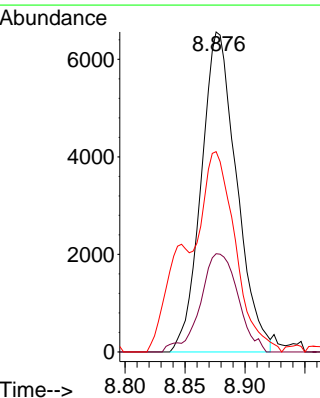
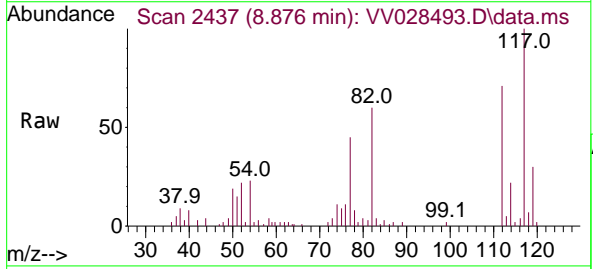
Instrument : MSVOA\_V  
 ClientSampleId : MDL-WATER-QT4-2022-07

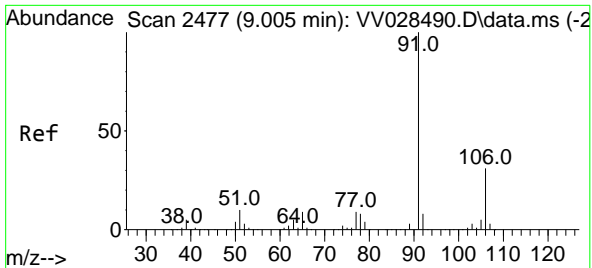
Tgt Ion	Resp	Lower	Upper
107	4813		
107	100		
109	92.1	65.9	122.5
188	4.3	3.0	4.4



#51  
 Chlorobenzene  
 Concen: 1.964 ug/L  
 RT: 8.876 min Scan# 2437  
 Delta R.T. 0.003 min  
 Lab File: VV028493.D  
 Acq: 10 Oct 2022 10:49

Tgt Ion	Resp	Lower	Upper
112	13410		
112	100		
114	30.7	21.7	40.3
77	62.6	48.7	73.1

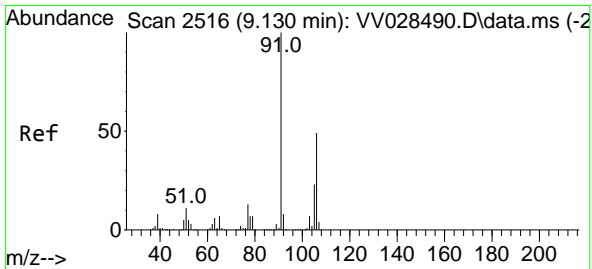
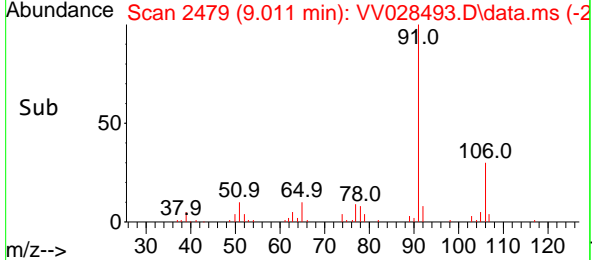
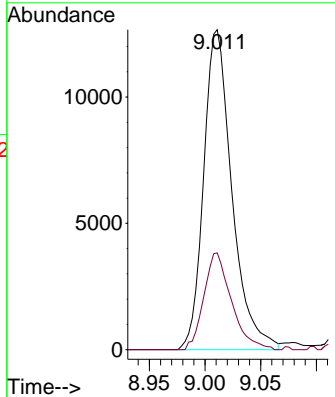
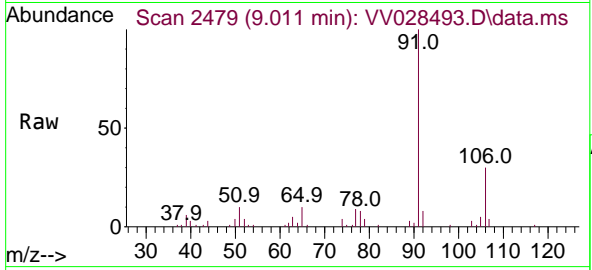




#52  
 Ethylbenzene  
 Concen: 1.888 ug/L  
 RT: 9.011 min Scan# 2479  
 Delta R.T. 0.006 min  
 Lab File: VV028493.D  
 Acq: 10 Oct 2022 10:49

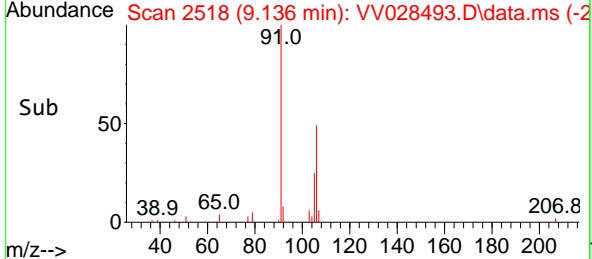
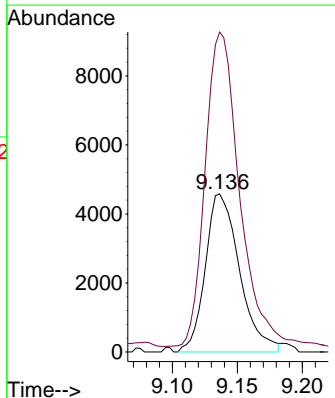
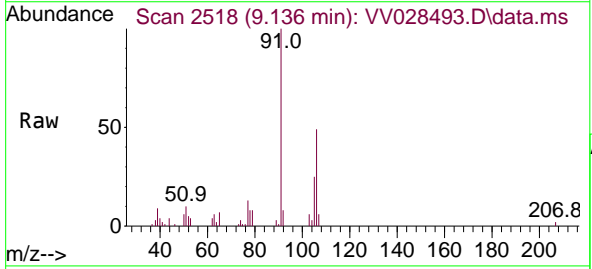
Instrument : MSVOA\_V  
 ClientSampleId : VV028493.D  
 MDL-WATER-QT4-2022-07

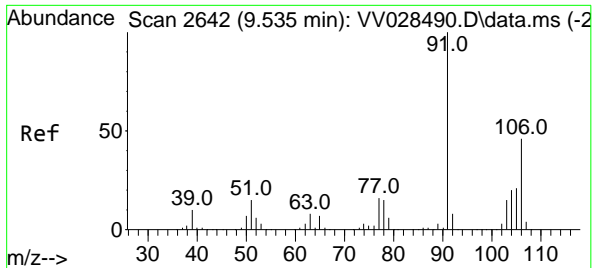
Tgt Ion: 91 Resp: 22389  
 Ion Ratio Lower Upper  
 91 100  
 106 30.3 21.4 39.8



#53  
 m,p-Xylene  
 Concen: 1.865 ug/L  
 RT: 9.136 min Scan# 2518  
 Delta R.T. 0.006 min  
 Lab File: VV028493.D  
 Acq: 10 Oct 2022 10:49

Tgt Ion: 106 Resp: 8382  
 Ion Ratio Lower Upper  
 106 100  
 91 202.3 145.2 269.6

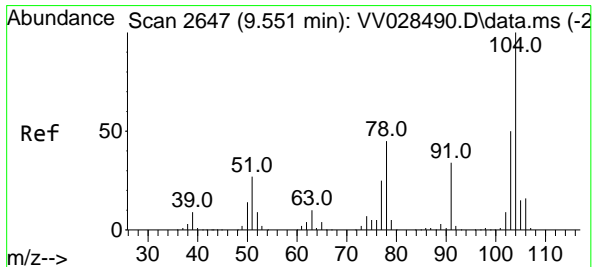
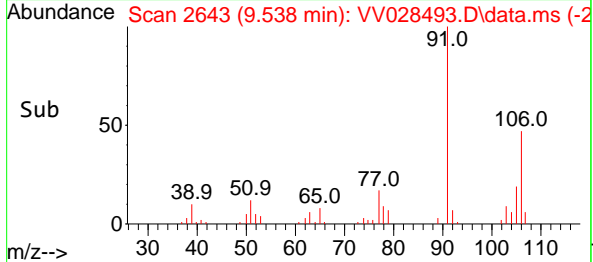
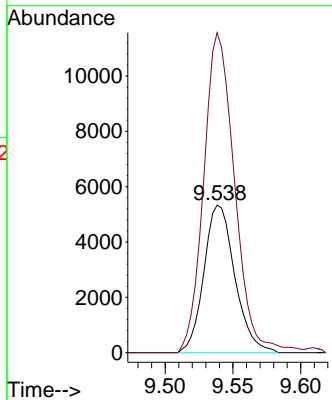
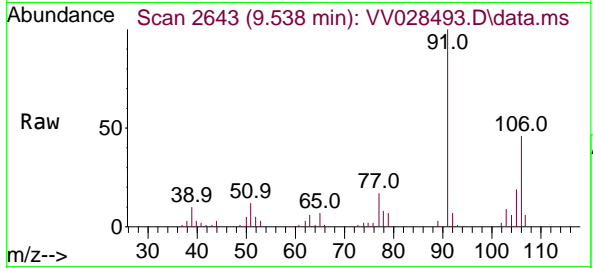




#54  
 o-Xylene  
 Concen: 1.882 ug/L  
 RT: 9.538 min Scan# 2643  
 Delta R.T. 0.003 min  
 Lab File: VV028493.D  
 Acq: 10 Oct 2022 10:49

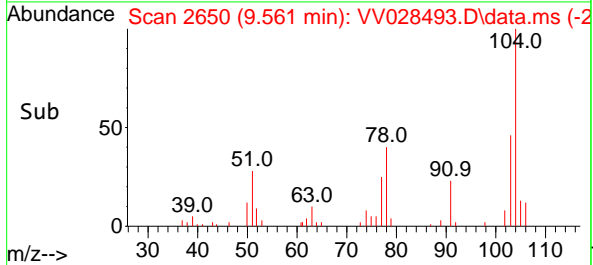
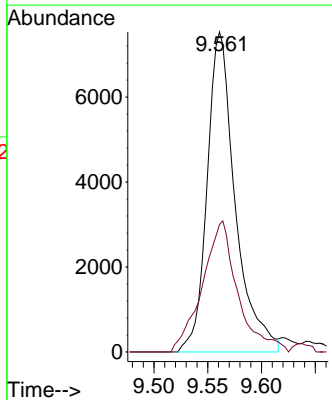
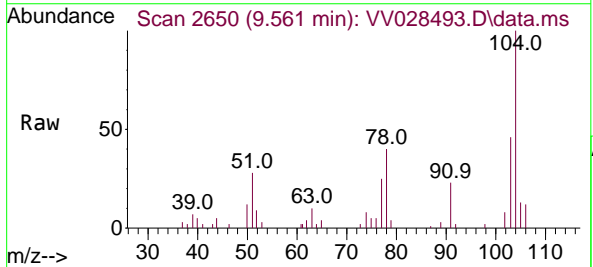
Instrument : MSVOA\_V  
 ClientSampleId : MDL-WATER-QT4-2022-07

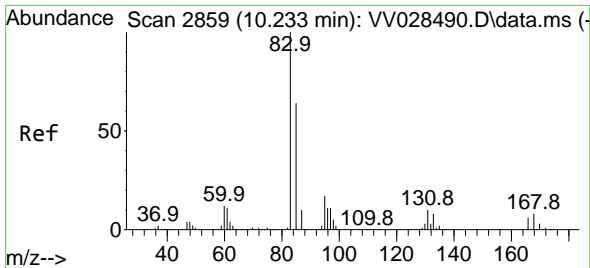
Tgt Ion:106 Resp: 8472  
 Ion Ratio Lower Upper  
 106 100  
 91 217.0 152.5 283.3



#55  
 Styrene  
 Concen: 1.770 ug/L  
 RT: 9.561 min Scan# 2650  
 Delta R.T. 0.009 min  
 Lab File: VV028493.D  
 Acq: 10 Oct 2022 10:49

Tgt Ion:104 Resp: 13684  
 Ion Ratio Lower Upper  
 104 100  
 78 39.8 31.9 59.2

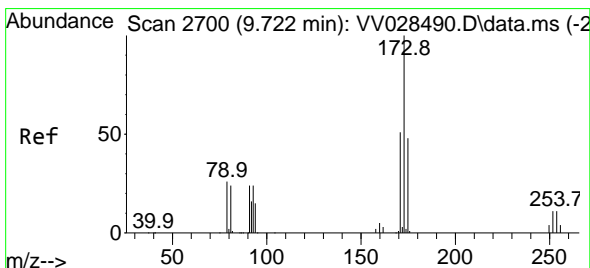
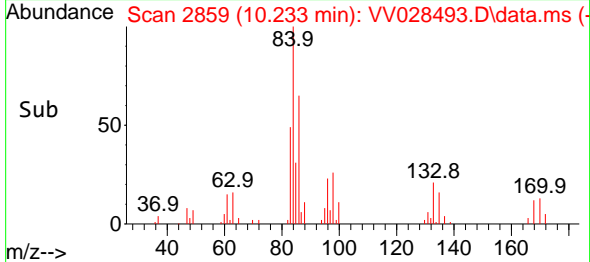
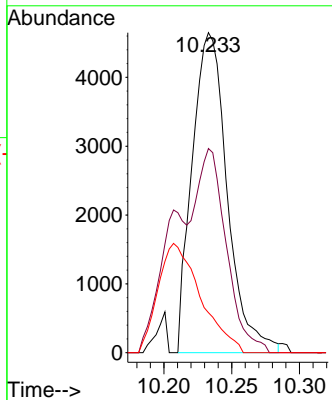
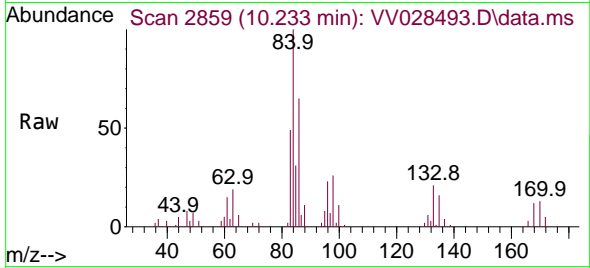




#57  
 1,1,2,2-Tetrachloroethane  
 Concen: 1.865 ug/L  
 RT: 10.233 min Scan# 21  
 Delta R.T. -0.000 min  
 Lab File: VV028493.D  
 Acq: 10 Oct 2022 10:49

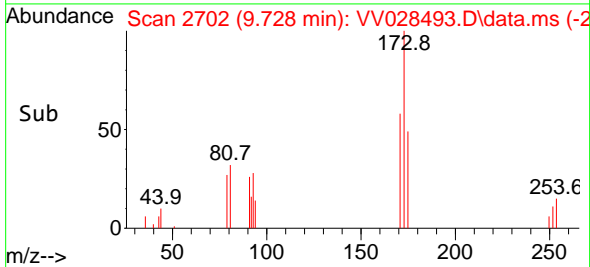
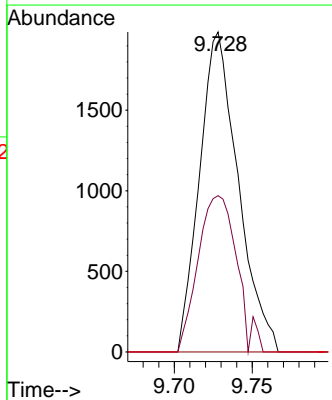
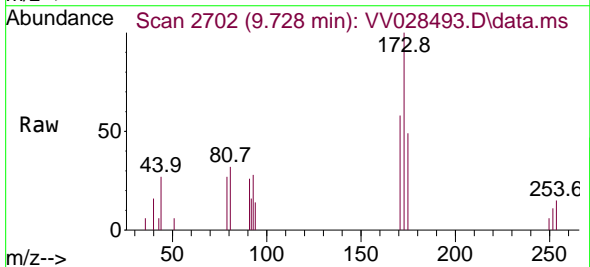
Instrument : MSVOA\_V  
 ClientSampleId : VV028493.D  
 MDL-WATER-QT4-2022-07

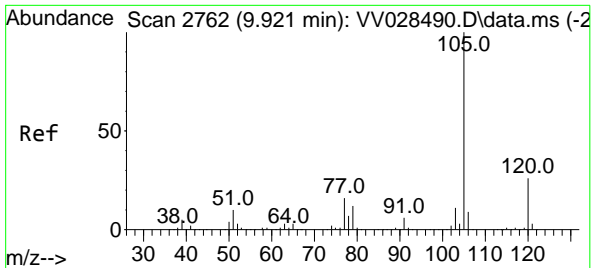
Tgt Ion	Resp	Lower	Upper
83	8374		
83	100		
85	63.8	44.8	83.2
131	12.5	7.2	10.8



#59  
 Bromoform  
 Concen: 1.673 ug/L  
 RT: 9.728 min Scan# 2702  
 Delta R.T. 0.006 min  
 Lab File: VV028493.D  
 Acq: 10 Oct 2022 10:49

Tgt Ion	Resp	Lower	Upper
173	3416		
173	100		
175	47.1	38.6	57.8
254	0.0	8.4	12.6

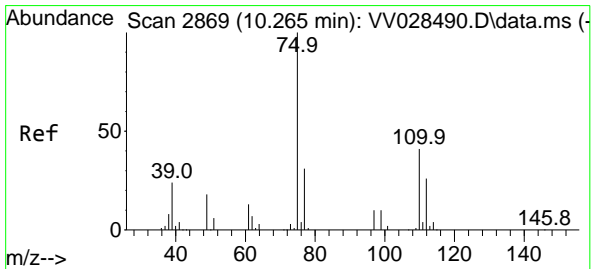
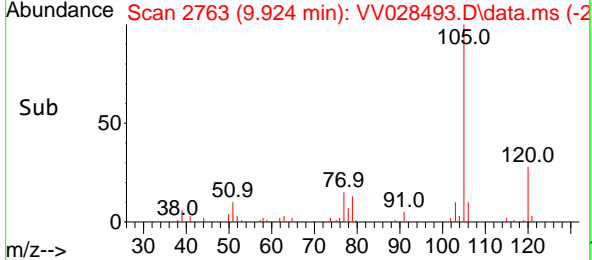
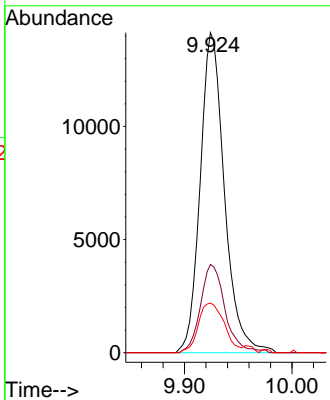
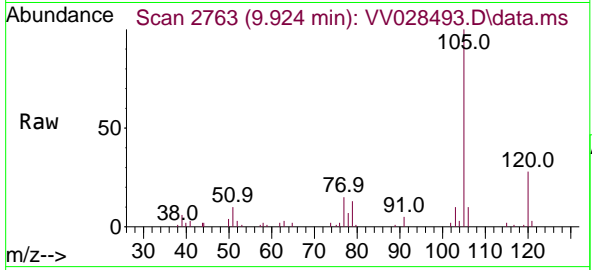




#60  
 Isopropylbenzene  
 Concen: 1.869 ug/L  
 RT: 9.924 min Scan# 21  
 Delta R.T. 0.003 min  
 Lab File: VV028493.D  
 Acq: 10 Oct 2022 10:49

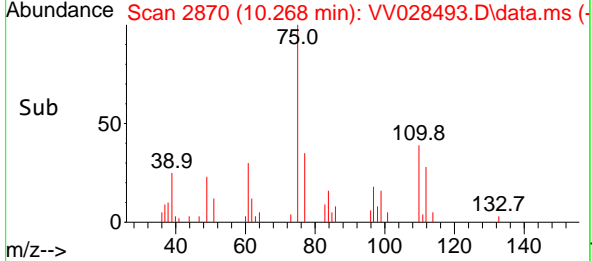
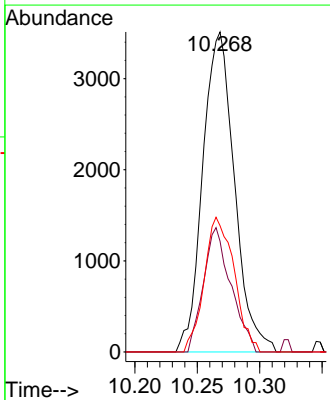
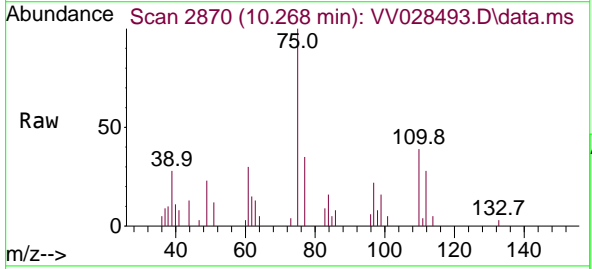
Instrument : MSVOA\_V  
 ClientSampleId : MDL-WATER-QT4-2022-07

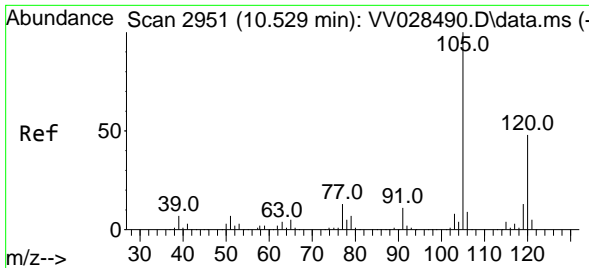
Tgt Ion	Resp	Lower	Upper
105	100		
120	27.8	20.5	30.7
77	16.6	12.7	19.1



#61  
 1,2,3-Trichloropropane  
 Concen: 1.771 ug/L  
 RT: 10.268 min Scan# 2870  
 Delta R.T. 0.003 min  
 Lab File: VV028493.D  
 Acq: 10 Oct 2022 10:49

Tgt Ion	Resp	Lower	Upper
75	100		
77	33.8	25.7	38.5
110	39.7	30.0	45.0

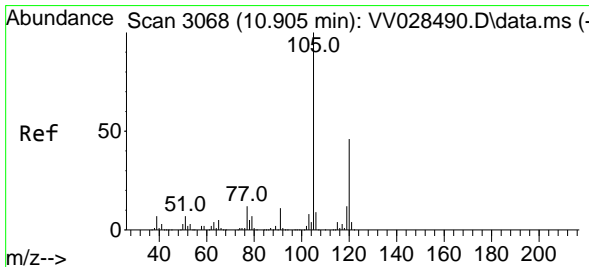
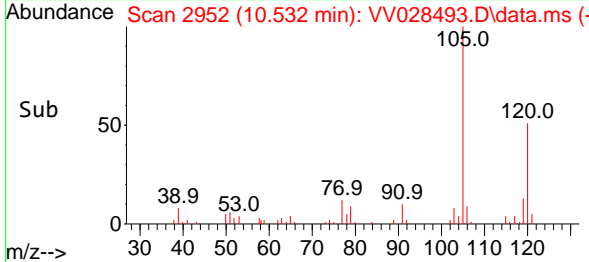
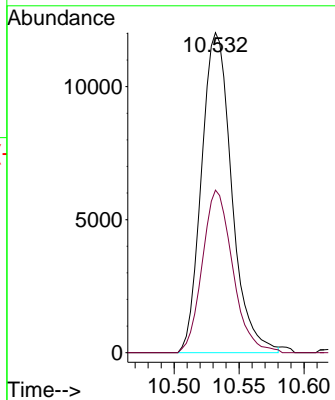
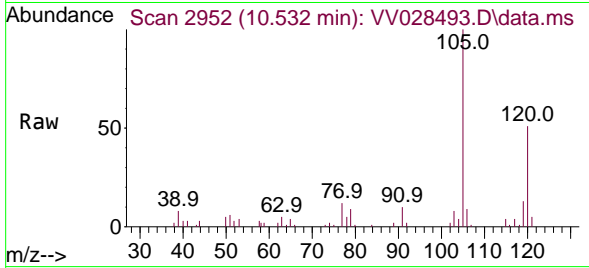




#62  
 1,3,5-Trimethylbenzene  
 Concen: 1.891 ug/L  
 RT: 10.532 min Scan# 2951  
 Delta R.T. 0.003 min  
 Lab File: VV028493.D  
 Acq: 10 Oct 2022 10:49

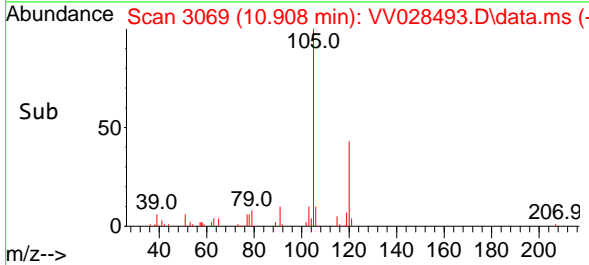
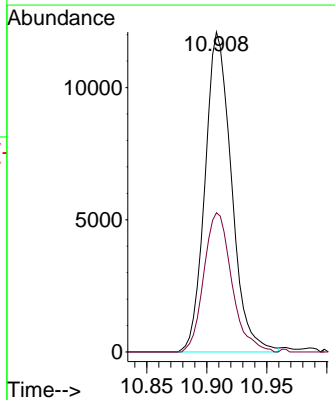
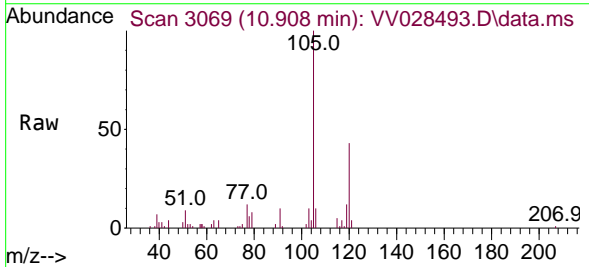
Instrument : MSVOA\_V  
 ClientSampleId : MDL-WATER-QT4-2022-07

Tgt Ion:105 Resp: 19453  
 Ion Ratio Lower Upper  
 105 100  
 120 51.1 39.1 58.7

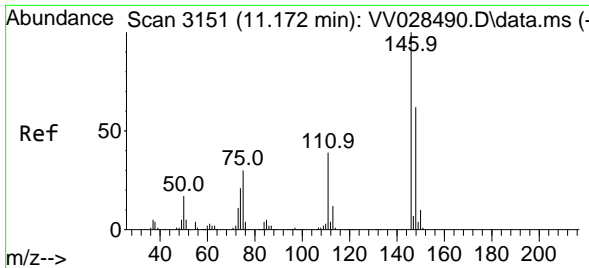


#63  
 1,2,4-Trimethylbenzene  
 Concen: 1.817 ug/L  
 RT: 10.908 min Scan# 3069  
 Delta R.T. 0.003 min  
 Lab File: VV028493.D  
 Acq: 10 Oct 2022 10:49

Tgt Ion:105 Resp: 18558  
 Ion Ratio Lower Upper  
 105 100  
 120 45.8 35.9 53.9

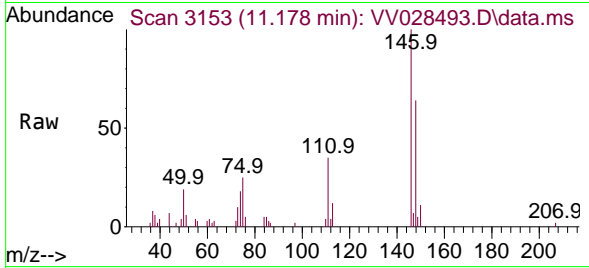




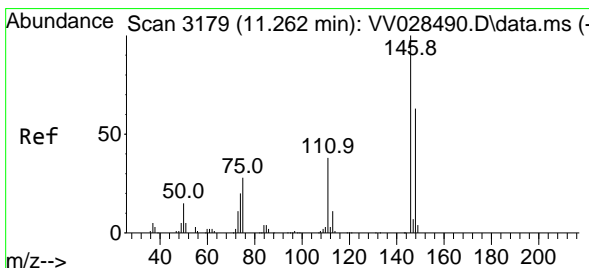
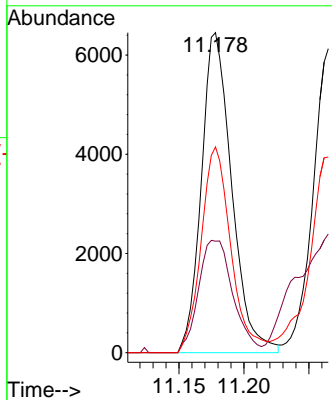
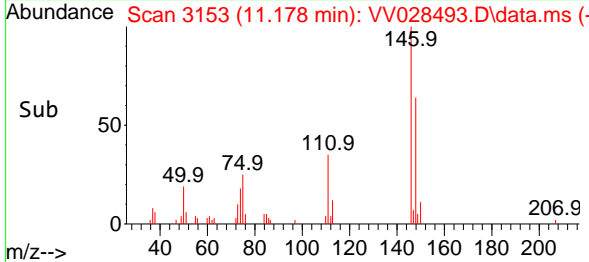


#64  
 1,3-Dichlorobenzene  
 Concen: 2.018 ug/L  
 RT: 11.178 min Scan# 3151  
 Delta R.T. 0.006 min  
 Lab File: VV028493.D  
 Acq: 10 Oct 2022 10:49

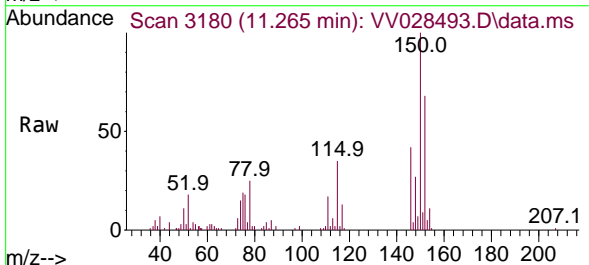
Instrument : MSVOA\_V  
 ClientSampleId : MDL-WATER-QT4-2022-07



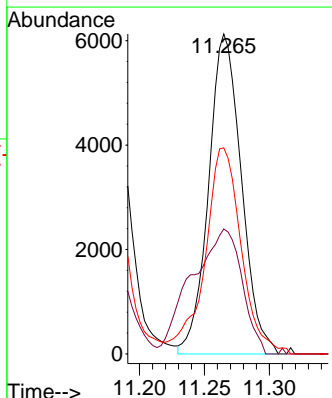
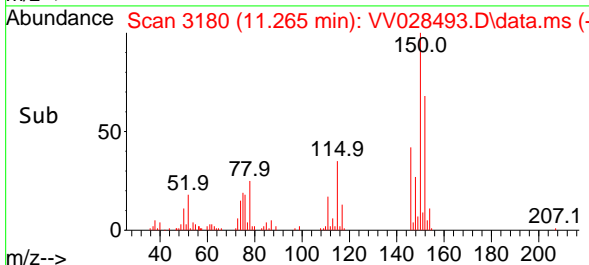
Tgt Ion:146 Resp: 10485  
 Ion Ratio Lower Upper  
 146 100  
 111 34.8 29.0 53.9  
 148 68.9 44.6 82.8

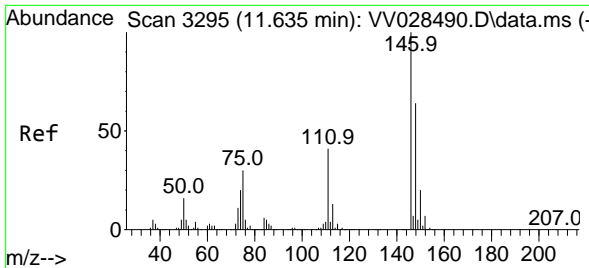


#65  
 1,4-Dichlorobenzene  
 Concen: 2.073 ug/L  
 RT: 11.265 min Scan# 3180  
 Delta R.T. 0.003 min  
 Lab File: VV028493.D  
 Acq: 10 Oct 2022 10:49



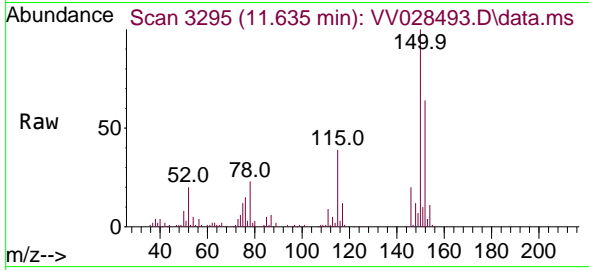
Tgt Ion:146 Resp: 10745  
 Ion Ratio Lower Upper  
 146 100  
 111 39.0 26.6 49.4  
 148 64.4 43.4 80.6





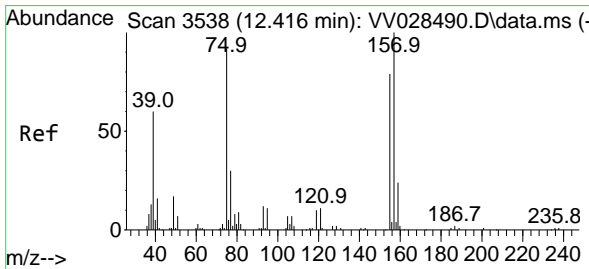
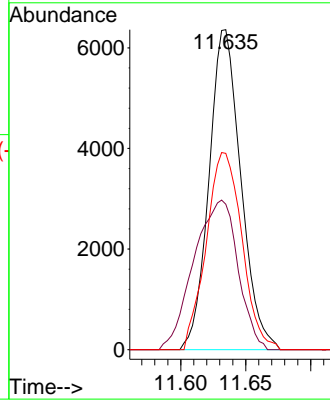
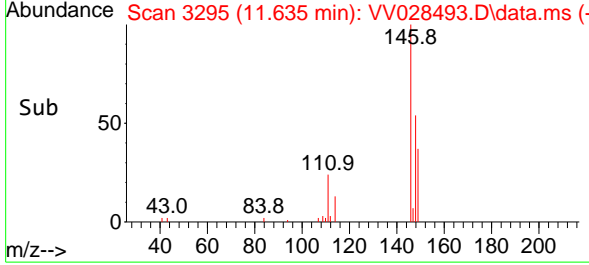
#67  
 1,2-Dichlorobenzene  
 Concen: 2.071 ug/L  
 RT: 11.635 min Scan# 31  
 Delta R.T. -0.000 min  
 Lab File: VV028493.D  
 Acq: 10 Oct 2022 10:49

Instrument : MSVOA\_V  
 ClientSampleId : MDL-WATER-QT4-2022-07

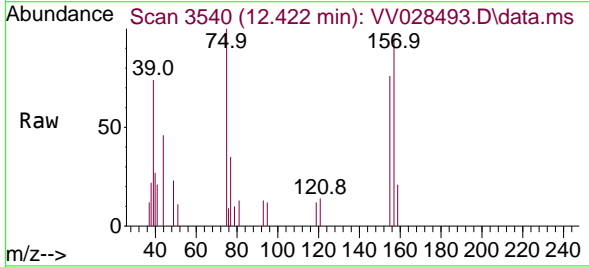


Tgt Ion:146 Resp: 10861

Ion	Ratio	Lower	Upper
146	100		
111	45.4	33.9	50.9
148	61.4	50.6	75.8

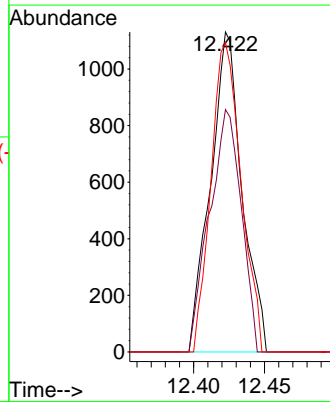
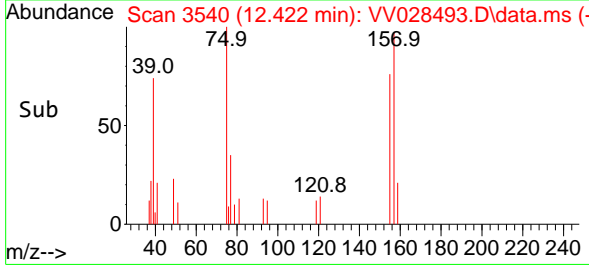


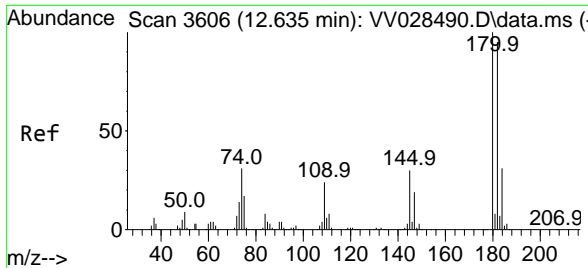
#68  
 1,2-Dibromo-3-chloropropane  
 Concen: 1.630 ug/L  
 RT: 12.422 min Scan# 3540  
 Delta R.T. 0.006 min  
 Lab File: VV028493.D  
 Acq: 10 Oct 2022 10:49



Tgt Ion: 75 Resp: 1751

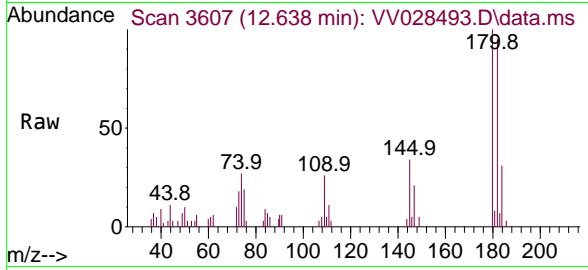
Ion	Ratio	Lower	Upper
75	100		
155	75.8	65.0	97.6
157	96.6	86.0	129.0





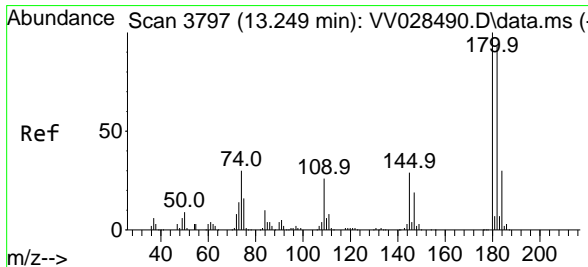
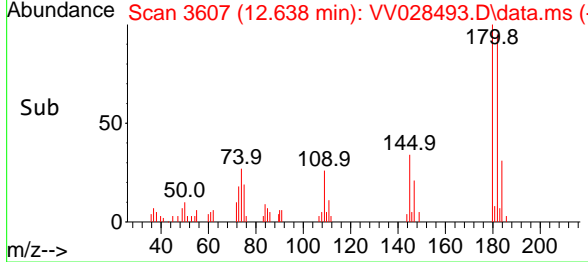
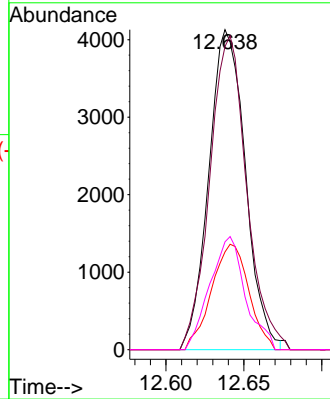
#69  
 1,3,5-Trichlorobenzene  
 Concen: 1.709 ug/L  
 RT: 12.638 min Scan# 30  
 Delta R.T. 0.003 min  
 Lab File: VV028493.D  
 Acq: 10 Oct 2022 10:49

Instrument : MSVOA\_V  
 ClientSampleId : MDL-WATER-QT4-2022-07



Tgt Ion:180 Resp: 6744

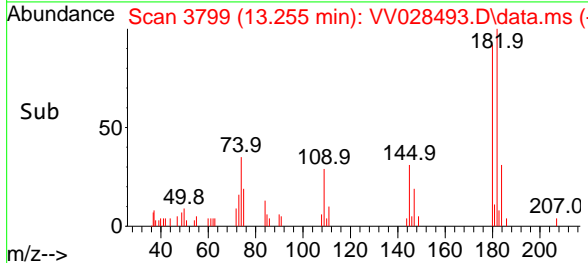
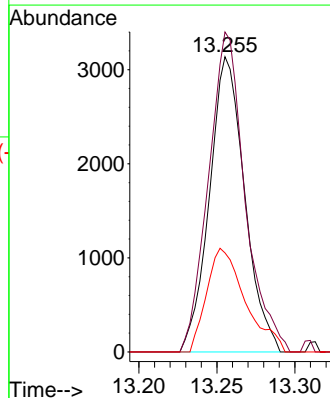
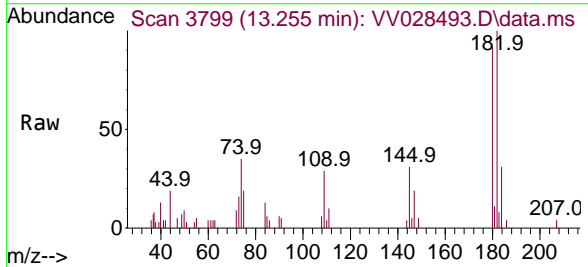
Ion	Ratio	Lower	Upper
180	100		
182	98.8	75.9	113.9
184	33.6	24.0	36.0
145	34.3	24.2	36.4

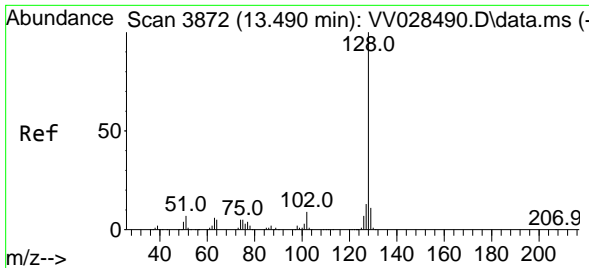


#70  
 1,2,4-trichlorobenzene  
 Concen: 1.417 ug/L  
 RT: 13.255 min Scan# 3799  
 Delta R.T. 0.006 min  
 Lab File: VV028493.D  
 Acq: 10 Oct 2022 10:49

Tgt Ion:180 Resp: 4930

Ion	Ratio	Lower	Upper
180	100		
182	112.2	75.3	112.9
145	36.4	24.3	36.5

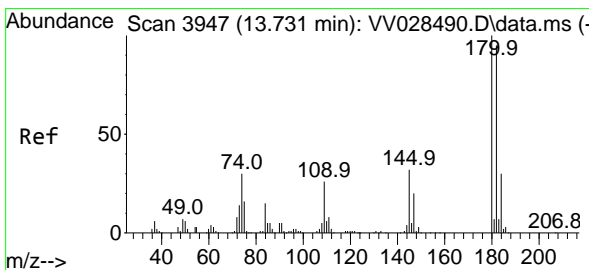
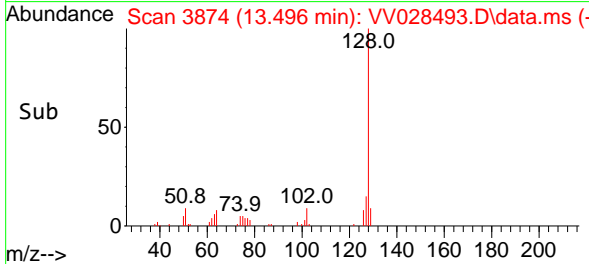
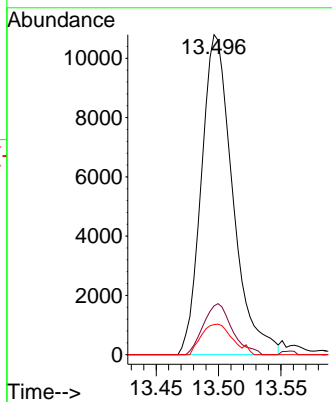
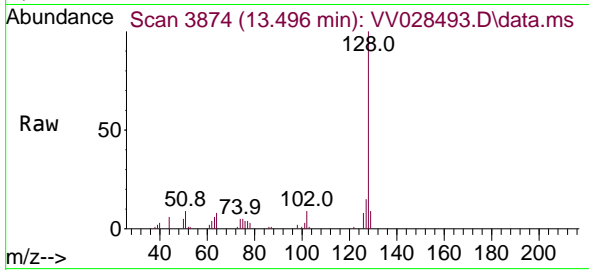




#71  
 Naphthalene  
 Concen: 1.743 ug/L  
 RT: 13.496 min Scan# 3874  
 Delta R.T. 0.006 min  
 Lab File: VV028493.D  
 Acq: 10 Oct 2022 10:49

Instrument : MSVOA\_V  
 ClientSampleId : MDL-WATER-QT4-2022-07

Tgt Ion	Resp	Lower	Upper
128	18858		
127	14.6	10.6	15.8
129	9.0	8.9	13.3



#72  
 1,2,3-Trichlorobenzene  
 Concen: 1.771 ug/L  
 RT: 13.738 min Scan# 3949  
 Delta R.T. 0.006 min  
 Lab File: VV028493.D  
 Acq: 10 Oct 2022 10:49

Tgt Ion	Resp	Lower	Upper
180	6006		
182	91.6	75.4	113.0
145	28.3	26.5	39.7

