

Data Path : Z:\VOASRV\HPCHEM1\MSVOA V\DATA\VV101419\
 Data File : VV013137.D
 Acq On : 14 Oct 2019 13:10
 Operator : SY/MD
 Sample : K5347-06
 Misc : 5.00ML/MSVOA V/WATER
 ALS Vial : 7 Sample Multiplier: 1

Instrument :
 MSVOA_V
 ClientSampleId :
 C0AF5

Integration Parameters: LSCINT.P

Integrator: RTE
 Smoothing : OFF
 Sampling : 1
 Start Thrs: 0.2
 Stop Thrs : 0

Filtering: 5
 Min Area: 0 % of largest Peak
 Max Peaks: 100
 Peak Location: TOP

If leading or trailing edge < 100 prefer < Baseline drop else tangent >
 Peak separation: 5

Method : Z:\VOASRV\HPCHEM1\MSVOA_V\METHOD\SOMVLM101119WMA.M
 Title : VOC Analysis

Signal : TIC

peak #	R.T. min	first scan	max scan	last scan	PK TY	peak height	corr. area	corr. % max.	% of total
1	1.225	39	42	50	rVB3	14441	11113	0.51%	0.072%
2	1.319	63	71	92	rVB	253283	281624	12.85%	1.816%
3	1.582	146	153	169	rVB	228320	264052	12.05%	1.703%
4	2.126	312	322	334	rBV	437065	605160	27.62%	3.902%
5	2.843	542	545	550	rVB6	1053	846	0.04%	0.005%
6	2.907	562	565	569	rBV5	911	969	0.04%	0.006%
7	3.135	631	636	639	rBV4	665	536	0.02%	0.003%
8	3.158	639	643	646	rBV4	904	620	0.03%	0.004%
9	3.212	657	660	662	rBV3	708	450	0.02%	0.003%
10	3.618	779	786	789	rBV3	569	692	0.03%	0.004%
11	3.791	833	840	844	rBV3	463	608	0.03%	0.004%
12	3.971	881	896	947	rBV	95799	501071	22.87%	3.231%
13	4.296	995	997	1001	rVB3	1036	614	0.03%	0.004%
14	4.315	1001	1003	1010	rBV4	581	583	0.03%	0.004%
15	4.399	1010	1029	1063	rBV	354843	893682	40.79%	5.762%
16	4.595	1088	1090	1091	rBV2	814	391	0.02%	0.003%
17	4.843	1163	1167	1169	rBV3	911	587	0.03%	0.004%
18	4.978	1206	1209	1212	rBV4	443	438	0.02%	0.003%
19	5.093	1225	1245	1286	rBV2	886712	2191086	100.00%	14.128%
20	5.360	1325	1328	1331	rBV4	668	406	0.02%	0.003%
21	5.405	1339	1342	1346	rVB	833	635	0.03%	0.004%
22	5.437	1348	1352	1355	rVV4	782	576	0.03%	0.004%
23	5.592	1398	1400	1403	rBV3	852	524	0.02%	0.003%
24	5.663	1407	1422	1454	rBV	656775	1306831	59.64%	8.426%
25	5.836	1474	1476	1481	rVB4	1016	815	0.04%	0.005%
26	5.945	1494	1510	1527	rBV2	77235	158196	7.22%	1.020%
27	6.116	1547	1563	1585	rBV	493631	1010343	46.11%	6.514%
28	6.383	1642	1646	1650	rVB4	1227	966	0.04%	0.006%
29	6.428	1657	1660	1662	rBV2	642	467	0.02%	0.003%
30	6.473	1671	1674	1678	rVV3	738	575	0.03%	0.004%
31	6.585	1706	1709	1714	rVB4	934	965	0.04%	0.006%
32	6.621	1714	1720	1721	rBV2	696	520	0.02%	0.003%
33	6.643	1724	1727	1729	rBV4	888	647	0.03%	0.004%
34	6.746	1757	1759	1762	rVB2	762	438	0.02%	0.003%

Data Path : Z:\VOASRV\HPCHEM1\MSVOA V\DATA\VV101419\
 Data File : VV013137.D
 Acq On : 14 Oct 2019 13:10
 Operator : SY/MD
 Sample : K5347-06
 Misc : 5.00ML/MSVOA V/WATER
 ALS Vial : 7 Sample Multiplier: 1

Instrument :
 MSVOA_V
 ClientSampleId :
 C0AF5

Integration Parameters: LSCINT.P

Integrator: RTE
 Smoothing : OFF
 Sampling : 1
 Start Thrs: 0.2
 Stop Thrs : 0

Filtering: 5
 Min Area: 0 % of largest Peak
 Max Peaks: 100
 Peak Location: TOP

If leading or trailing edge < 100 prefer < Baseline drop else tangent >
 Peak separation: 5

Method : Z:\VOASRV\HPCHEM1\MSVOA_V\METHOD\SOMVLM101119WMA.M
 Title : VOC Analysis

35	6.920	1810	1813	1819	rVB3	675	571	0.03%	0.004%
36	6.958	1819	1825	1830	rBV2	500	529	0.02%	0.003%
37	7.029	1830	1847	1871	rBV	241053	442685	20.20%	2.854%
38	7.183	1892	1895	1896	rBV3	905	543	0.02%	0.004%
39	7.244	1912	1914	1919	rBV4	1022	718	0.03%	0.005%
40	7.280	1922	1925	1929	rVB3	686	421	0.02%	0.003%
41	7.357	1934	1949	1967	rBV	933906	1607767	73.38%	10.367%
42	7.662	2033	2044	2061	rBV	170434	290243	13.25%	1.871%
43	7.759	2072	2074	2078	rBV4	699	462	0.02%	0.003%
44	7.907	2118	2120	2124	rVB2	737	425	0.02%	0.003%
45	7.933	2125	2128	2131	rVB2	863	466	0.02%	0.003%
46	7.981	2135	2143	2147	rBV4	2531	3831	0.17%	0.025%
47	8.016	2149	2154	2166	rVB9	6290	9945	0.45%	0.064%
48	8.080	2170	2174	2177	rBV3	682	578	0.03%	0.004%
49	8.138	2180	2192	2234	rBV3	422087	997721	45.54%	6.433%
50	8.508	2305	2307	2311	rVB2	722	437	0.02%	0.003%
51	8.585	2327	2331	2337	rVB5	862	809	0.04%	0.005%
52	8.662	2352	2355	2358	rBV3	540	428	0.02%	0.003%
53	8.765	2381	2387	2388	rBV3	517	478	0.02%	0.003%
54	8.894	2411	2427	2457	rBV	950395	1560405	71.22%	10.061%
55	9.048	2471	2475	2477	rBV3	1020	782	0.04%	0.005%
56	9.174	2507	2514	2516	rBV6	2371	2163	0.10%	0.014%
57	9.238	2532	2534	2540	rVB3	660	455	0.02%	0.003%
58	9.338	2561	2565	2571	rVB2	976	647	0.03%	0.004%
59	9.363	2571	2573	2576	rBV4	686	443	0.02%	0.003%
60	9.437	2593	2596	2600	rVB3	687	502	0.02%	0.003%
61	9.463	2600	2604	2608	rBV4	631	546	0.02%	0.004%
62	9.588	2636	2643	2645	rBV5	1404	1474	0.07%	0.010%
63	9.637	2656	2658	2661	rBV3	759	400	0.02%	0.003%
64	9.736	2686	2689	2692	rBV2	565	482	0.02%	0.003%
65	9.842	2717	2722	2723	rBV2	592	430	0.02%	0.003%
66	9.977	2761	2764	2768	rBV3	566	439	0.02%	0.003%
67	10.013	2772	2775	2777	rBV2	620	480	0.02%	0.003%
68	10.029	2777	2780	2783	rVB3	643	428	0.02%	0.003%
69	10.077	2785	2795	2811	rBV7	3991	8327	0.38%	0.054%
70	10.190	2826	2830	2832	rBV2	475	428	0.02%	0.003%
71	10.257	2839	2851	2866	rBV	558213	876858	40.02%	5.654%

Data Path : Z:\VOASRV\HPCHEM1\MSVOA V\DATA\VV101419\
 Data File : VV013137.D
 Acq On : 14 Oct 2019 13:10
 Operator : SY/MD
 Sample : K5347-06
 Misc : 5.00ML/MSVOA V/WATER
 ALS Vial : 7 Sample Multiplier: 1

Instrument :
 MSVOA_V
 ClientSampleId :
 C0AF5

Integration Parameters: LSCINT.P

Integrator: RTE
 Smoothing : OFF
 Sampling : 1
 Start Thrs: 0.2
 Stop Thrs : 0

Filtering: 5
 Min Area: 0 % of largest Peak
 Max Peaks: 100
 Peak Location: TOP

If leading or trailing edge < 100 prefer < Baseline drop else tangent >
 Peak separation: 5

Method : Z:\VOASRV\HPCHEM1\MSVOA_V\METHOD\SOMVLM101119WMA.M
 Title : VOC Analysis

72	10.418	2895	2901	2909	rVB4	4791	6326	0.29%	0.041%
73	10.585	2944	2953	2956	rBV6	1336	1634	0.07%	0.011%
74	10.791	3013	3017	3022	rVB3	779	652	0.03%	0.004%
75	10.878	3042	3044	3052	rBV4	530	550	0.03%	0.004%
76	11.122	3118	3120	3125	rVB3	1064	690	0.03%	0.004%
77	11.154	3125	3130	3132	rBV3	665	655	0.03%	0.004%
78	11.199	3141	3144	3146	rBV2	783	459	0.02%	0.003%
79	11.219	3146	3150	3154	rBV5	1061	961	0.04%	0.006%
80	11.289	3160	3172	3196	rBV	708639	1116818	50.97%	7.201%
81	11.579	3253	3262	3274	rBV5	9684	18869	0.86%	0.122%
82	11.669	3277	3290	3308	rVV	814325	1295208	59.11%	8.351%
83	11.997	3389	3392	3395	rVB4	757	479	0.02%	0.003%
84	12.029	3397	3402	3408	rVV6	999	1176	0.05%	0.008%
85	12.071	3412	3415	3418	rBV2	483	406	0.02%	0.003%
86	12.151	3437	3440	3443	rBV3	1042	675	0.03%	0.004%
87	12.174	3443	3447	3449	rBV4	693	599	0.03%	0.004%
88	12.296	3482	3485	3496	rVB4	1504	1787	0.08%	0.012%
89	12.344	3496	3500	3502	rBV2	942	754	0.03%	0.005%
90	12.399	3514	3517	3521	rVB2	1203	763	0.03%	0.005%
91	12.456	3532	3535	3538	rBV2	521	385	0.02%	0.002%
92	12.530	3554	3558	3561	rVV3	662	475	0.02%	0.003%
93	12.643	3588	3593	3597	rBV2	655	984	0.04%	0.006%
94	12.691	3605	3608	3615	rVB3	1368	1372	0.06%	0.009%
95	13.058	3719	3722	3725	rBV2	566	379	0.02%	0.002%
96	13.302	3795	3798	3799	rBV3	1072	609	0.03%	0.004%
97	13.447	3841	3843	3849	rVB4	678	405	0.02%	0.003%
98	14.305	4105	4110	4113	rBV5	930	1040	0.05%	0.007%
99	14.653	4216	4218	4220	rBV2	759	466	0.02%	0.003%
100	15.505	4480	4483	4487	rVB4	1192	896	0.04%	0.006%

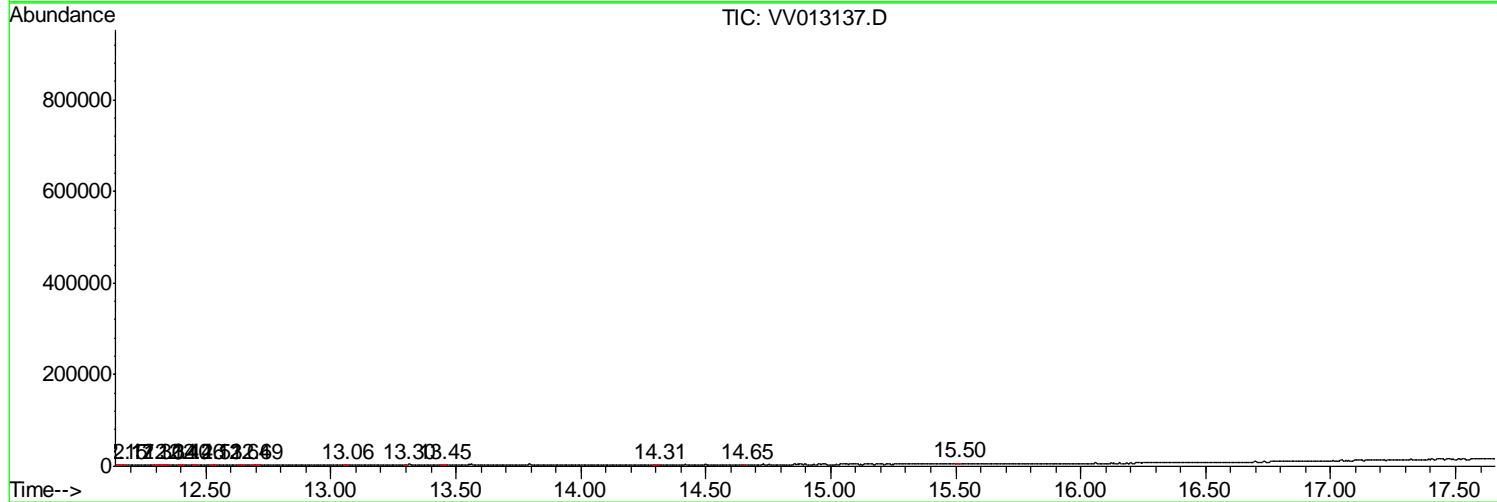
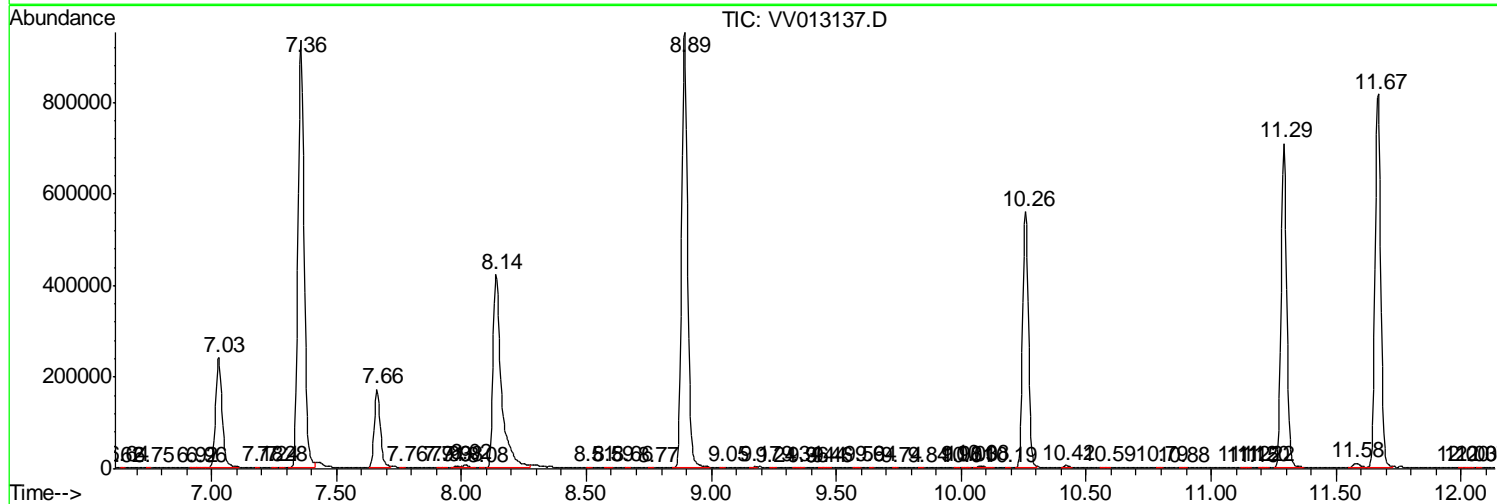
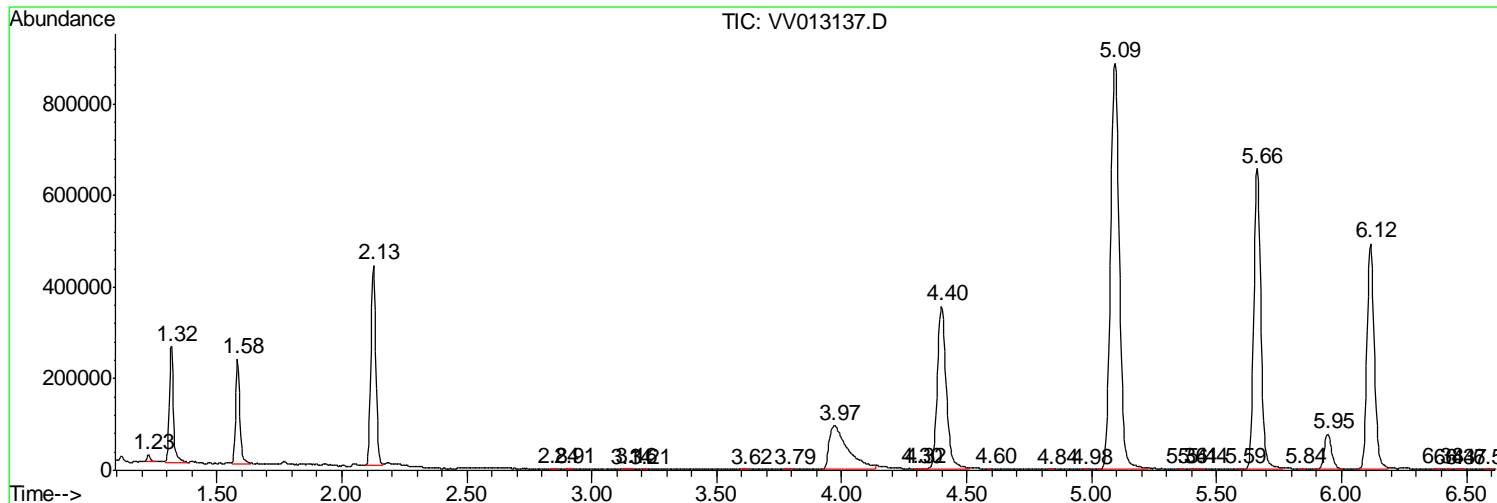
Sum of corrected areas: 15509244

Data Path : Z:\VOASRV\HPCHEM1\MSVOA V\DATA\VV101419\
 Data File : VV013137.D
 Acq On : 14 Oct 2019 13:10
 Operator : SY/MD
 Sample : K5347-06
 Misc : 5.00ML/MSVOA V/WATER
 ALS Vial : 7 Sample Multiplier: 1

Instrument :
 MSVOA_V
Client Sampled :
 C0AF5

Quant Method : Z:\VOASRV\HPCHEM1\MSVOA_V\METHOD\SOMVLM101119WMA.M
 Quant Title : VOC Analysis

TIC Library : C:\DATABASE\NIST11.L
 TIC Integration Parameters: LSCINT.P



Data Path : Z:\VOASRV\HPCHEM1\MSVOA V\DATA\VV101419\
 Data File : VV013137.D
 Acq On : 14 Oct 2019 13:10
 Operator : SY/MD
 Sample : K5347-06
 Misc : 5.00ML/MSVOA V/WATER
 ALS Vial : 7 Sample Multiplier: 1

Instrument :
 MSVOA_V
 ClientSampled :
 C0AF5

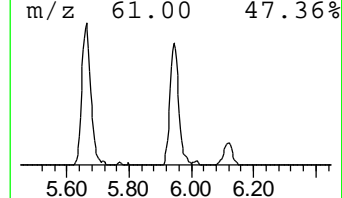
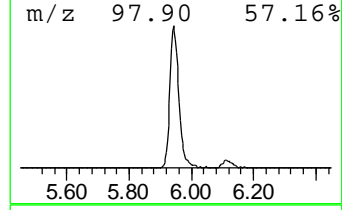
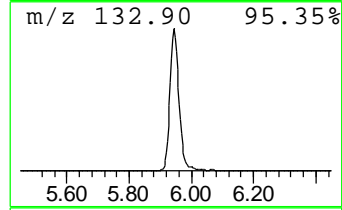
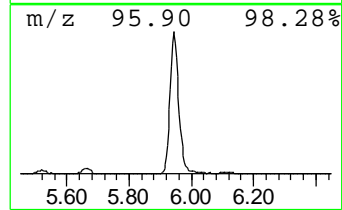
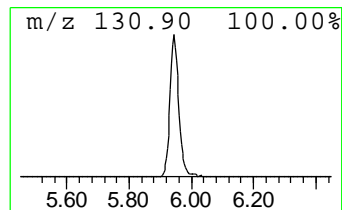
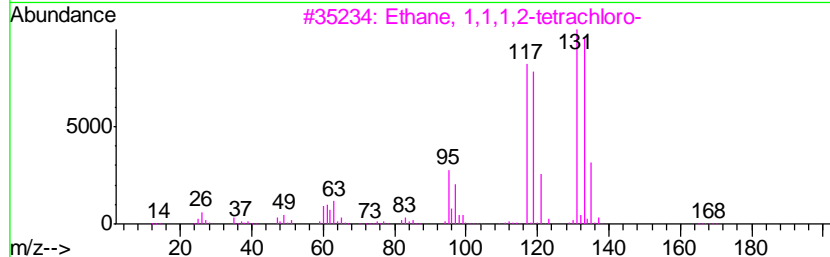
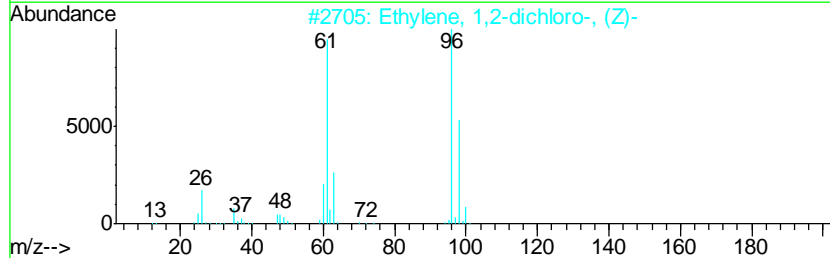
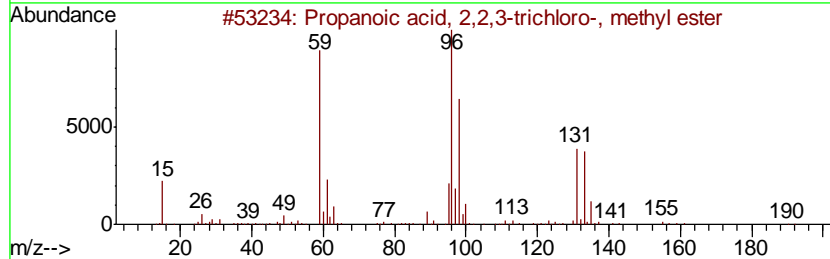
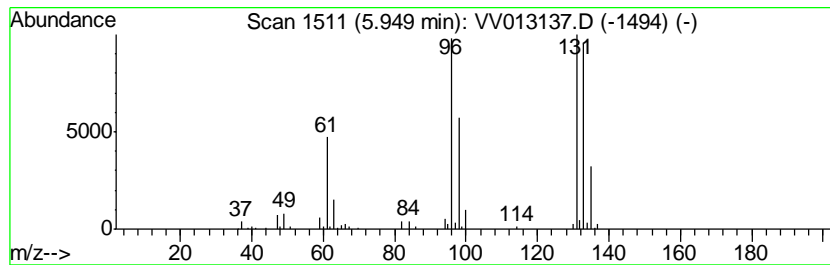
Quant Method : Z:\VOASRV\HPCHEM1\MSVOA_V\METHOD\SOMVLM101119WMA.M
 Quant Title : VOC Analysis

TIC Library : C:\DATABASE\NIST11.L
 TIC Integration Parameters: LSCINT.P

 Peak Number 1 unknown-01 Concentration Rank 2

R.T.	EstConc	Area	Relative to ISTD	R.T.
5.95	6.05 ug/L	158196	1,4-Difluorobenzene	5.66

Hit#	of	Tentative ID	MW	MolForm	CAS#	Qual
1	5	Propanoic acid, 2,2,3-trichloro-...	190	C4H5Cl3O2	004749-35-3	37
2		Ethylene, 1,2-dichloro-, (Z)-	96	C2H2Cl2	000156-59-2	35
3		Ethane, 1,1,1,2-tetrachloro-	166	C2H2Cl4	000630-20-6	23
4		Dihydro-4,5-dichloro-2(3H)furanone	154	C4H4Cl2O2	114434-99-0	12
5		1,3,4-Thiadiazole-2(3H)-thione, ...	133	C2H3N3S2	002349-67-9	9



Data Path : Z:\VOASRV\HPCHEM1\MSVOA_V\DATA\VV101419\
Data File : VV013137.D
Acq On : 14 Oct 2019 13:10
Operator : SY/MD
Sample : K5347-06
Misc : 5.00ML/MSVOA_V/WATER
ALS Vial : 7 Sample Multiplier: 1

Instrument :
MSVOA_V
ClientSampleId :
C0AF5

Quant Method : Z:\VOASRV\HPCHEM1\MSVOA_V\METHOD\SOMVLM101119WMA.M
Quant Title : VOC Analysis

TIC Library : C:\DATABASE\NIST11.L
TIC Integration Parameters: LSCINT.P

TIC Top Hit name	RT	EstConc	Units	Response	--Internal Standard--			
					#	RT	Resp	Conc
unknown-01	5.95	6.0	ug/L	158196	1	5.66	1306830	50.0