

Data Path : Z:\VOASRV\HPCHEM1\MSVOA V\DATA\VV101518\  
 Data File : VV008277.D  
 Acq On : 15 Oct 2018 16:18  
 Operator : SY/MD  
 Sample : VV1015WBL01  
 Misc : 25.0 mL/MSVOA V/WATER  
 ALS Vial : 10 Sample Multiplier: 1

Instrument :  
 MSVOA\_V  
 ClientSampleId :  
 VBLK67

Integration Parameters: rteint.p  
 Integrator: RTE  
 Smoothing : ON Filtering: 5  
 Sampling : 1 Min Area: 3 % of largest Peak  
 Start Thrs: 0.1 Max Peaks: 100  
 Stop Thrs : 0 Peak Location: TOP

If leading or trailing edge < 100 prefer < Baseline drop else tangent >  
 Peak separation: 5

Method : Z:\VOASRV\HPCHEM1\MSVOA\_V\METHOD\SOMVTR101518WMA.M  
 Title : TRACE VOA SOM01.0

Signal : TIC

peak #	R.T. min	first scan	max scan	last scan	PK TY	peak height	corr. area	corr. % max.	% of total
1	1.319	63	71	82	rVB	75901	77443	12.04%	1.583%
2	1.582	147	153	161	rBV	57044	62349	9.69%	1.274%
3	2.132	315	324	337	rVB	119955	167878	26.10%	3.431%
4	3.987	884	901	918	rBV2	46734	170161	26.46%	3.478%
5	4.405	1015	1031	1051	rBV2	97052	236304	36.74%	4.830%
6	5.097	1227	1246	1268	rBV2	259623	598793	93.10%	12.238%
7	5.666	1409	1423	1443	rBV	211210	419215	65.18%	8.568%
8	5.946	1499	1510	1527	rVB3	11404	24230	3.77%	0.495%
9	6.122	1548	1565	1585	rBV	143247	290490	45.17%	5.937%
10	7.036	1836	1849	1864	rBV	80224	145305	22.59%	2.970%
11	7.360	1936	1950	1967	rBV	298793	524187	81.50%	10.714%
12	7.669	2035	2046	2065	rBV	47903	87016	13.53%	1.778%
13	8.148	2181	2195	2232	rBV3	249751	643162	100.00%	13.145%
14	8.897	2415	2428	2453	rBV	296950	497550	77.36%	10.169%
15	10.267	2843	2854	2865	rBV	79452	126919	19.73%	2.594%
16	11.299	3162	3175	3198	rBV	246958	432615	67.26%	8.842%
17	11.675	3279	3292	3314	rBV	228268	389145	60.50%	7.953%

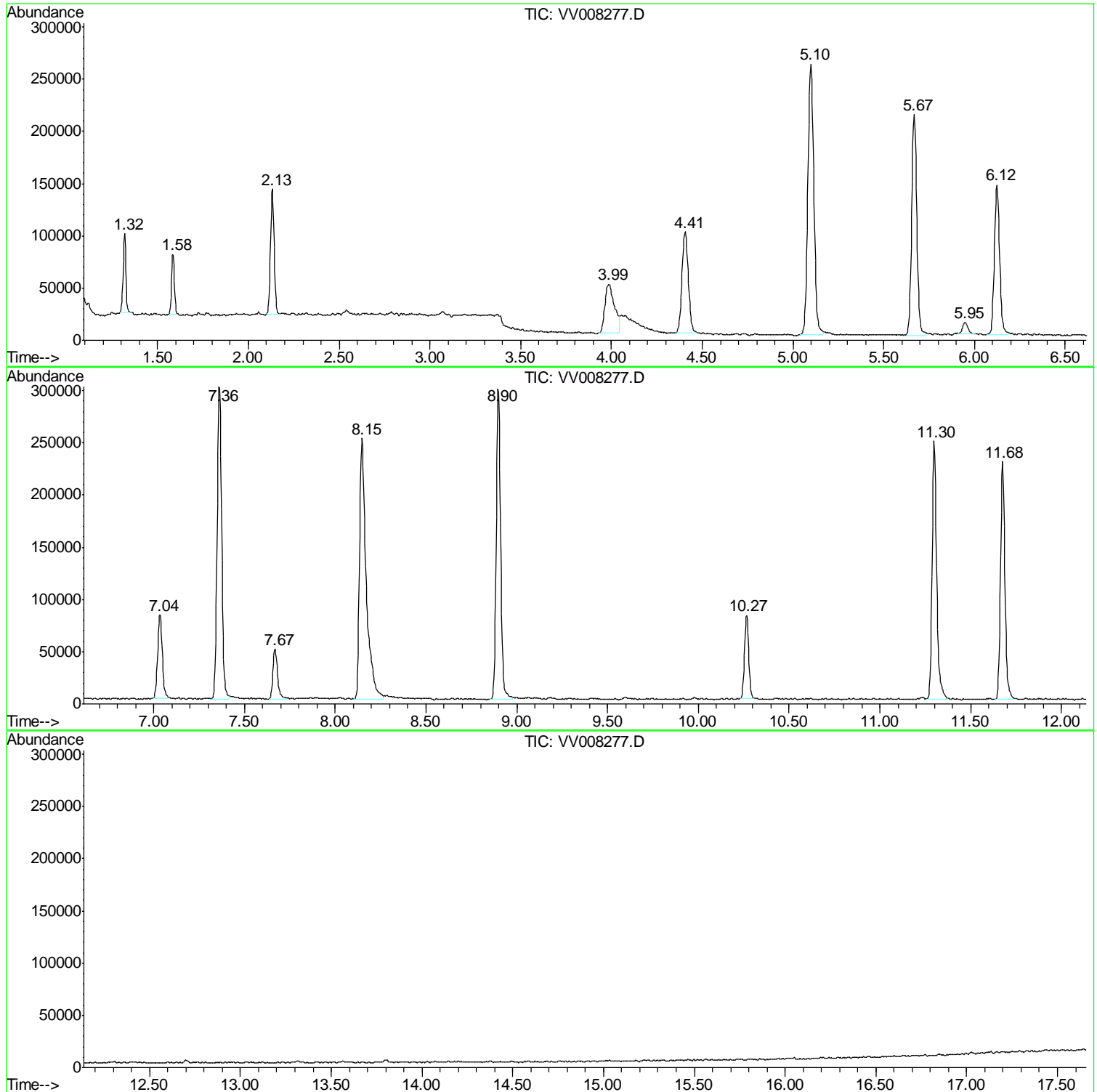
Sum of corrected areas: 4892762

Data Path : Z:\VOASRV\HPCHEM1\MSVOA V\DATA\VV101518\  
Data File : VV008277.D  
Acq On : 15 Oct 2018 16:18  
Operator : SY/MD  
Sample : VV1015WBL01  
Misc : 25.0 mL/MSVOA V/WATER  
ALS Vial : 10 Sample Multiplier: 1

Instrument :  
MSVOA\_V  
ClientSampled :  
VBLK67

Quant Method : Z:\VOASRV\HPCHEM1\MSVOA\_V\METHOD\SOMVTR101518WMA.M  
Quant Title : TRACE VOA SOM01.0

TIC Library : C:\DATABASE\NIST11.L  
TIC Integration Parameters: LSCINT.P



Data Path : Z:\VOASRV\HPCHEM1\MSVOA\_V\DATA\VV101518\  
Data File : VV008277.D  
Acq On : 15 Oct 2018 16:18  
Operator : SY/MD  
Sample : VV1015WBL01  
Misc : 25.0 mL/MSVOA\_V/WATER  
ALS Vial : 10 Sample Multiplier: 1

Instrument :  
MSVOA\_V  
ClientSampleId :  
VBLK67

Quant Method : Z:\VOASRV\HPCHEM1\MSVOA\_V\METHOD\SOMVTR101518WMA.M  
Quant Title : TRACE VOA SOM01.0

TIC Library : C:\DATABASE\NIST11.L  
TIC Integration Parameters: LSCINT.P

No Library Search Compounds Detected

\*\*\*\*\*

Data Path : Z:\VOASRV\HPCHEM1\MSVOA\_V\DATA\VV101518\  
Data File : VV008277.D  
Acq On : 15 Oct 2018 16:18  
Operator : SY/MD  
Sample : VV1015WBL01  
Misc : 25.0 mL/MSVOA\_V/WATER  
ALS Vial : 10 Sample Multiplier: 1

Instrument :  
MSVOA\_V  
ClientSampleId :  
VBLK67

Quant Method : Z:\VOASRV\HPCHEM1\MSVOA\_V\METHOD\SOMVTR101518WMA.M  
Quant Title : TRACE VOA SOM01.0

TIC Library : C:\DATABASE\NIST11.L  
TIC Integration Parameters: LSCINT.P

TIC Top Hit name	RT	EstConc	Units	Response	--Internal Standard--			
					#	RT	Resp	Conc

---