

Data Path : Z:\VOASRV\HPCHEM1\MSVOA V\DATA\VV101620\
 Data File : VV018940.D
 Acq On : 16 Oct 2020 16:26
 Operator : SY/MD
 Sample : L4426-06
 Misc : 5.0ml/MSVOA V/WATER
 ALS Vial : 7 Sample Multiplier: 1

Instrument :
 MSVOA_V
 ClientSampleId :
 BG404

Quant Time: Oct 17 06:03:49 2020
 Quant Method : Z:\VOASRV\HPCHEM1\MSVOA_V\METHOD\SOMVLM101420WMA.M
 Quant Title : VOC Analysis
 QLast Update : Sat Oct 17 05:56:05 2020
 Response via : Initial Calibration

| Internal Standards | R.T. | QIon | Response | Conc | Units | Dev(Min) |
|----------------------------|-------|------|----------|-------|-------|----------|
| 1) 1,4-Difluorobenzene | 5.64 | 114 | 284755 | 50.00 | ug/L | 0.00 |
| 28) Chlorobenzene-d5 | 8.87 | 117 | 283798 | 50.00 | ug/L | 0.00 |
| 60) 1,4-Dichlorobenzene-d4 | 11.27 | 152 | 133309 | 50.00 | ug/L | 0.00 |

System Monitoring Compounds

| | | | | | | |
|--------------------------------|---------|-------|----------|----------|------|---------|
| 4) Vinyl Chloride-d3 | 1.32 | 65 | 112553 | 48.02 | ug/L | 0.00 |
| Spiked Amount | 50.000 | Range | 60 - 135 | Recovery | = | 96.04% |
| 7) Chloroethane-d5 | 1.58 | 69 | 95208 | 51.27 | ug/L | 0.00 |
| Spiked Amount | 50.000 | Range | 70 - 130 | Recovery | = | 102.54% |
| 11) 1,1-Dichloroethene-d2 | 2.12 | 63 | 176600 | 39.91 | ug/L | 0.00 |
| Spiked Amount | 50.000 | Range | 60 - 125 | Recovery | = | 79.82% |
| 21) 2-Butanone-d5 | 3.90 | 46 | 174237 | 106.64 | ug/L | 0.00 |
| Spiked Amount | 100.000 | Range | 40 - 130 | Recovery | = | 106.64% |
| 24) Chloroform-d | 4.38 | 84 | 209823 | 49.82 | ug/L | 0.00 |
| Spiked Amount | 50.000 | Range | 70 - 125 | Recovery | = | 99.64% |
| 26) 1,2-Dichloroethane-d4 | 5.06 | 65 | 141981 | 50.79 | ug/L | 0.00 |
| Spiked Amount | 50.000 | Range | 70 - 125 | Recovery | = | 101.58% |
| 32) Benzene-d6 | 5.07 | 84 | 396070 | 47.81 | ug/L | 0.00 |
| Spiked Amount | 50.000 | Range | 70 - 125 | Recovery | = | 95.62% |
| 36) 1,2-Dichloropropane-d6 | 6.09 | 67 | 126539 | 47.77 | ug/L | 0.00 |
| Spiked Amount | 50.000 | Range | 70 - 120 | Recovery | = | 95.54% |
| 41) Toluene-d8 | 7.34 | 98 | 348114 | 46.84 | ug/L | 0.00 |
| Spiked Amount | 50.000 | Range | 80 - 120 | Recovery | = | 93.68% |
| 43) trans-1,3-Dichloropropene- | 7.64 | 79 | 60042 | 46.37 | ug/L | 0.00 |
| Spiked Amount | 50.000 | Range | 60 - 125 | Recovery | = | 92.74% |
| 47) 2-Hexanone-d5 | 8.11 | 63 | 84912 | 86.29 | ug/L | 0.00 |
| Spiked Amount | 100.000 | Range | 45 - 130 | Recovery | = | 86.29% |
| 57) 1,1,2,2-Tetrachloroethane- | 10.24 | 84 | 126245 | 40.66 | ug/L | 0.00 |
| Spiked Amount | 50.000 | Range | 65 - 120 | Recovery | = | 81.32% |
| 64) 1,2-Dichlorobenzene-d4 | 11.65 | 152 | 143119 | 52.77 | ug/L | 0.00 |
| Spiked Amount | 50.000 | Range | 80 - 120 | Recovery | = | 105.54% |

Target Compounds

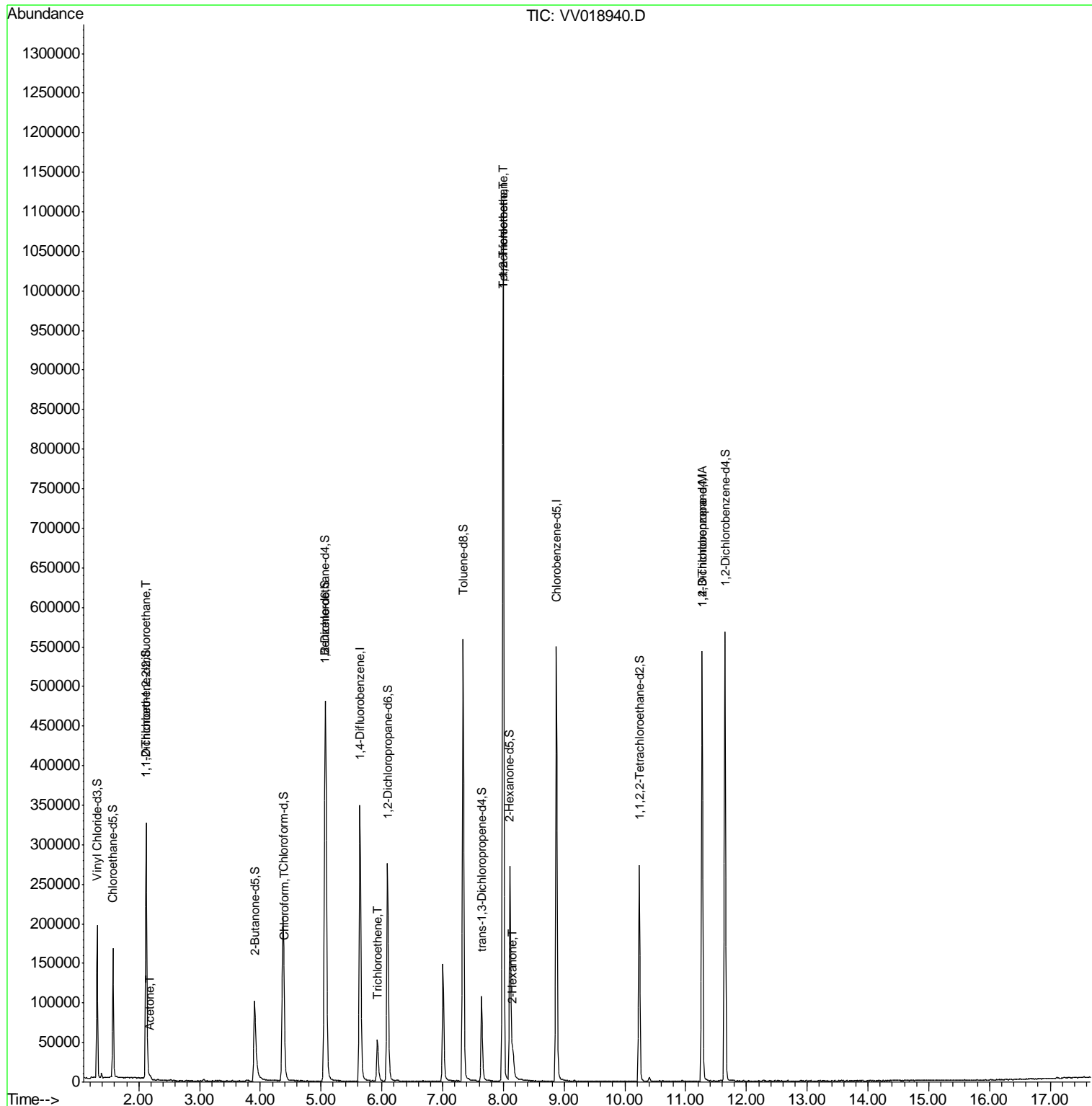
| Target Compounds | R.T. | QIon | Response | Conc | Units | Ovalue |
|--------------------------------|-------|------|----------|---------|--------|--------|
| 10) 1,1,2-Trichloro-1,2,2-trif | 2.12 | 101 | 1296 | 0.702 | ug/L # | 22 |
| 13) Acetone | 2.19 | 43 | 4413 | 3.696 | ug/L | 90 |
| 25) Chloroform | 4.40 | 83 | 4595 | 1.130 | ug/L | 91 |
| 34) Trichloroethene | 5.94 | 95 | 1807 | 0.720 | ug/L | 99 |
| 45) 1,1,2-Trichloroethane | 7.99 | 97 | 2227 | 1.028 | ug/L # | 1 |
| 46) Tetrachloroethene | 8.00 | 164 | 242871 | 137.366 | ug/L | 98 |
| 48) 2-Hexanone | 8.16 | 43 | 20606 | 8.092 | ug/L # | 84 |
| 59) 1,2,3-Trichloropropane | 11.27 | 75 | 15847 | 5.621 | ug/L # | 86 |

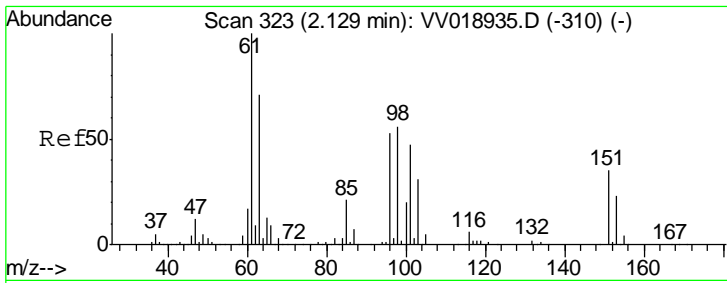
(#) = qualifier out of range (m) = manual integration (+) = signals summed

Data Path : Z:\VOASRV\HPCHEM1\MSVOA V\DATA\VV101620\
 Data File : VV018940.D
 Acq On : 16 Oct 2020 16:26
 Operator : SY/MD
 Sample : L4426-06
 Misc : 5.0ml/MSVOA V/WATER
 ALS Vial : 7 Sample Multiplier: 1

Instrument :
 MSVOA_V
 ClientSampleId :
 BG404

Quant Time: Oct 17 06:03:49 2020
 Quant Method : Z:\VOASRV\HPCHEM1\MSVOA_V\METHOD\SOMVLM101420WMA.M
 Quant Title : VOC Analysis
 QLast Update : Sat Oct 17 05:56:05 2020
 Response via : Initial Calibration





#10

1,1,2-Trichloro-1,2,2-trifluoroethane

Concen: 0.702 ug/L

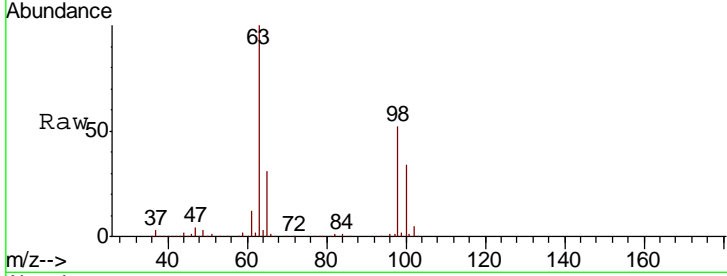
RT: 2.12 min Scan# 320

Delta R.T. -0.01 min

Lab File: VV018940.D

Acq: 16 Oct 2020 16:26

Instrument :
MSVOA_V
ClientSampled :
BG404



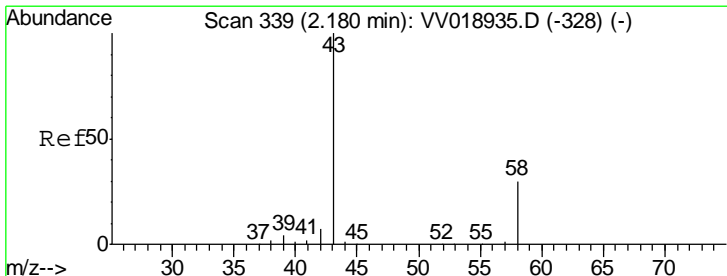
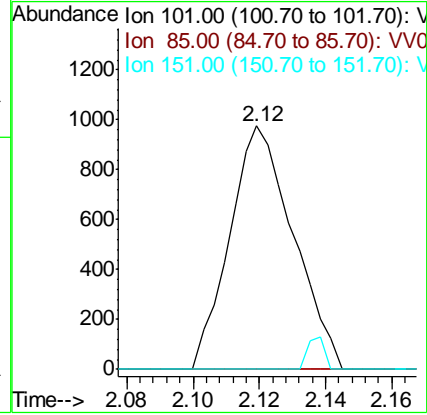
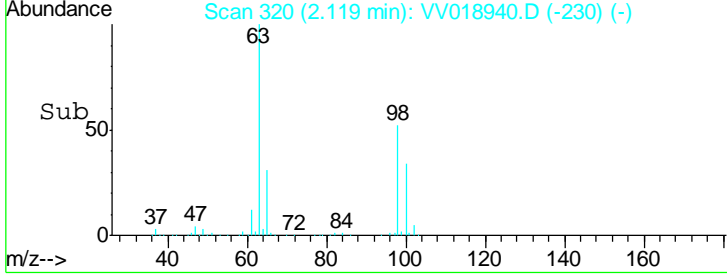
Tot Ion: 101 Resp: 1296

Ion Ratio Lower Upper

101 100

85 0.0 35.0 52.4#

151 3.6 59.7 89.5#



#13

Acetone

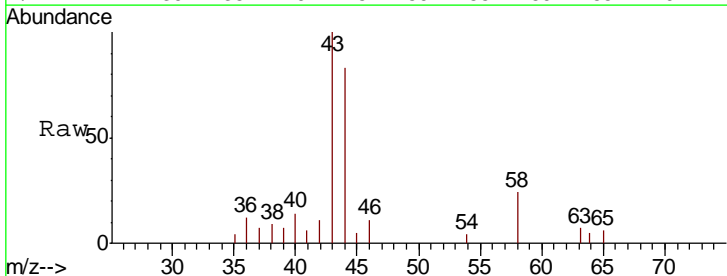
Concen: 3.696 ug/L

RT: 2.19 min Scan# 341

Delta R.T. 0.01 min

Lab File: VV018940.D

Acq: 16 Oct 2020 16:26

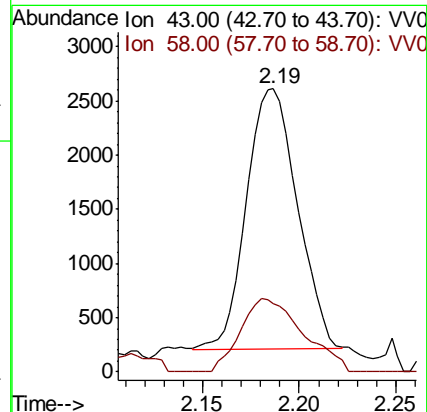
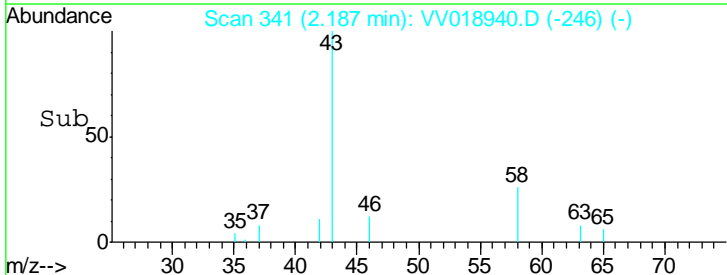


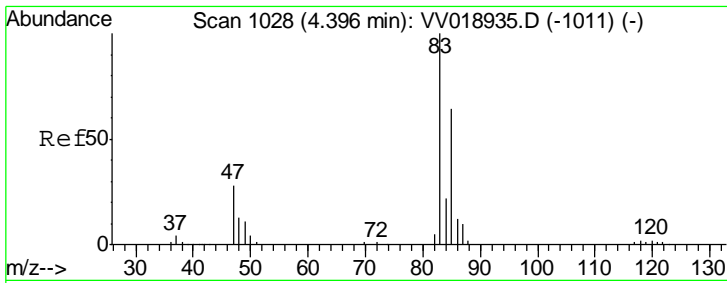
Tgt Ion: 43 Resp: 4413

Ion Ratio Lower Upper

43 100

58 34.5 0.0 58.8

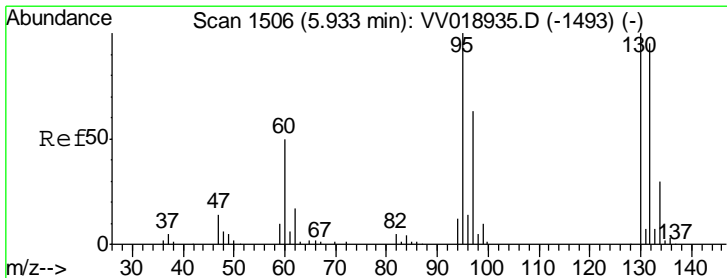
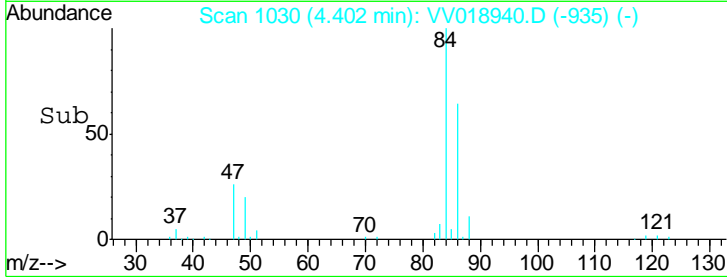
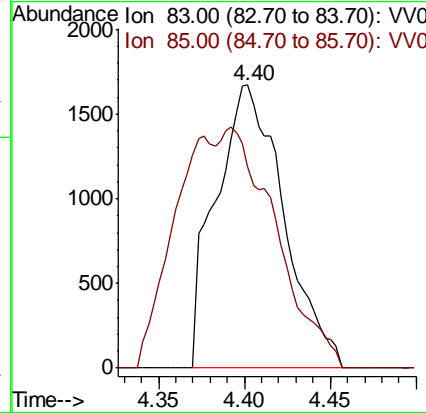
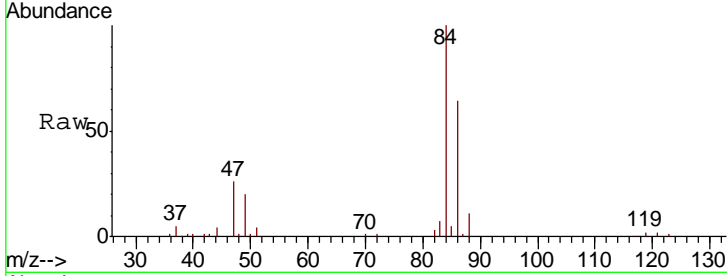




#25
 Chloroform
 Concen: 1.130 ug/L
 RT: 4.40 min Scan# 1030
 Delta R.T. 0.01 min
 Lab File: VV018940.D
 Acq: 16 Oct 2020 16:26

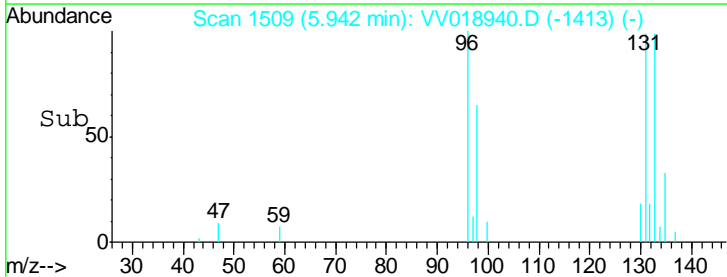
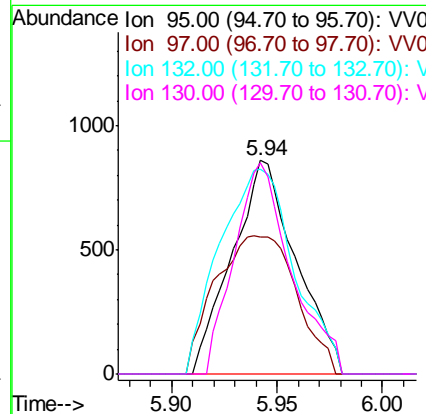
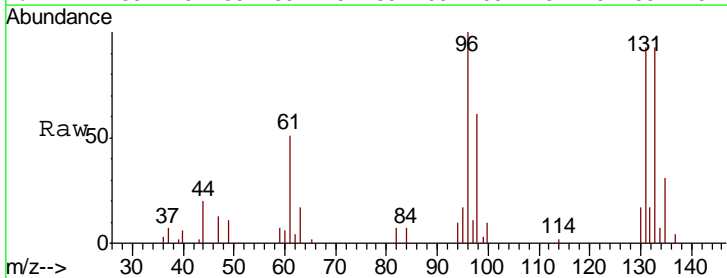
Instrument :
 MSVOA_V
 ClientSampled :
 BG404

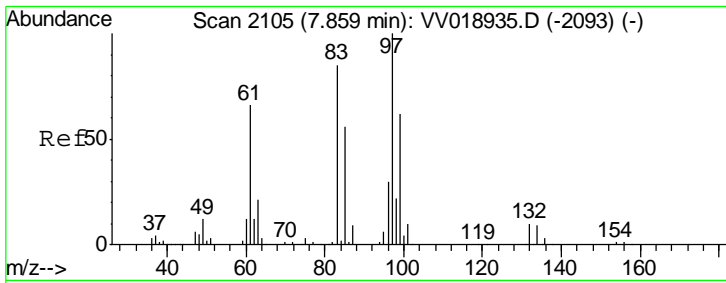
| Tgt Ion | Resp | Lower | Upper |
|---------|------|-------|-------|
| 83 | 100 | | |
| 85 | 71.0 | 44.6 | 82.8 |



#34
 Trichloroethene
 Concen: 0.720 ug/L
 RT: 5.94 min Scan# 1509
 Delta R.T. 0.01 min
 Lab File: VV018940.D
 Acq: 16 Oct 2020 16:26

| Tgt Ion | Resp | Lower | Upper |
|---------|------|-------|-------|
| 95 | 100 | | |
| 97 | 64.0 | 44.7 | 82.9 |
| 132 | 96.0 | 67.0 | 124.4 |
| 130 | 98.8 | 70.8 | 131.6 |

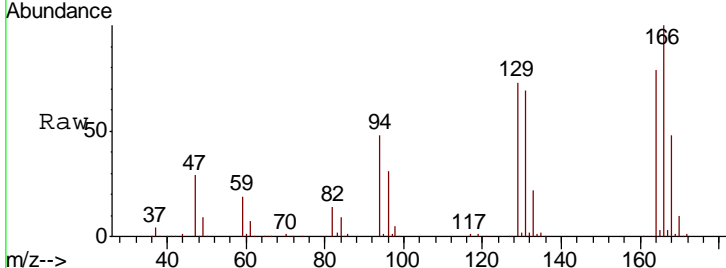




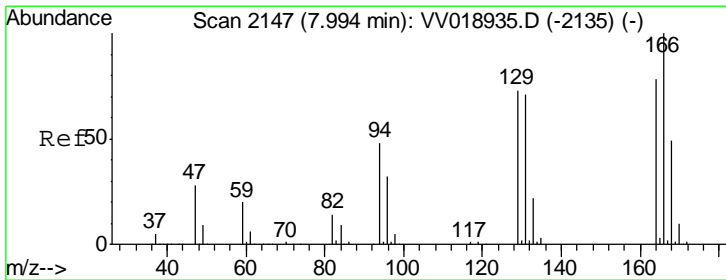
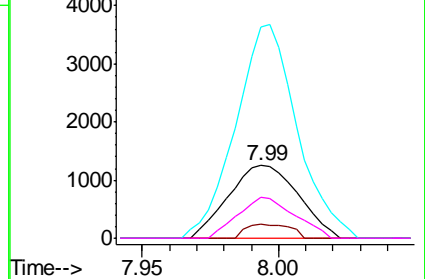
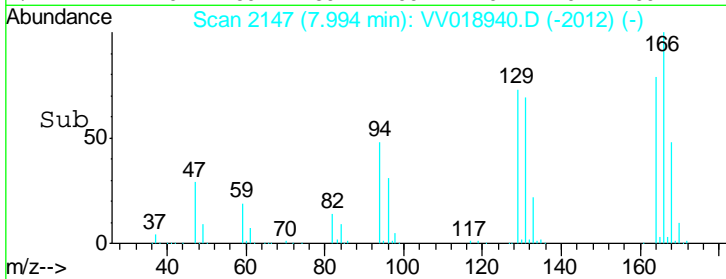
#45
 1,1,2-Trichloroethane
 Concen: 1.028 ug/L
 RT: 7.99 min Scan# 2147
 Delta R.T. 0.13 min
 Lab File: VV018940.D
 Acq: 16 Oct 2020 16:26

Instrument :
 MSVOA_V
 ClientSampled :
 BG404

| Tgt Ion | Resp | Lower | Upper |
|---------|-------|-------|--------|
| 97 | 100 | | |
| 99 | 19.5 | 43.8 | 81.4# |
| 83 | 289.1 | 61.0 | 113.4# |
| 85 | 56.6 | 38.9 | 72.2 |

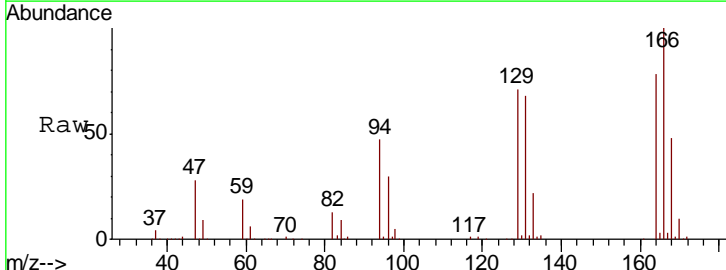


Abundance Ion 97.00 (96.70 to 97.70): VV018940.D (-2012) (-)
 Ion 99.00 (98.70 to 99.70): VV018940.D (-2012) (-)
 Ion 83.00 (82.70 to 83.70): VV018940.D (-2012) (-)
 Ion 85.00 (84.70 to 85.70): VV018940.D (-2012) (-)

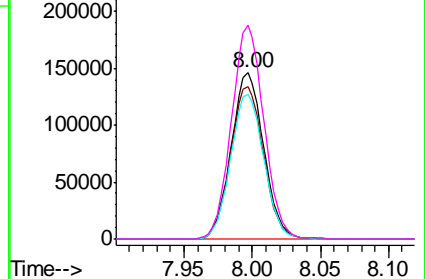
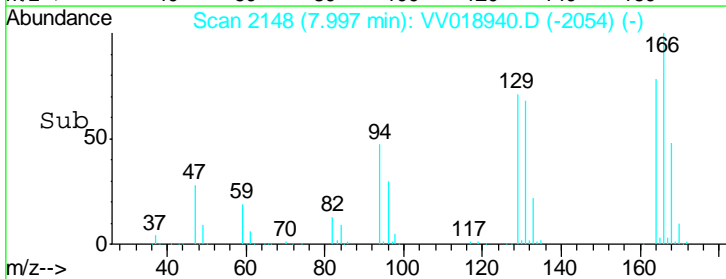


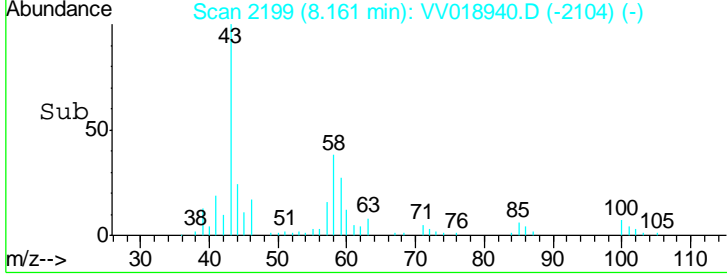
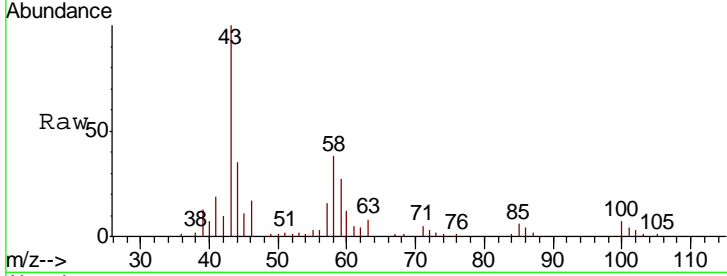
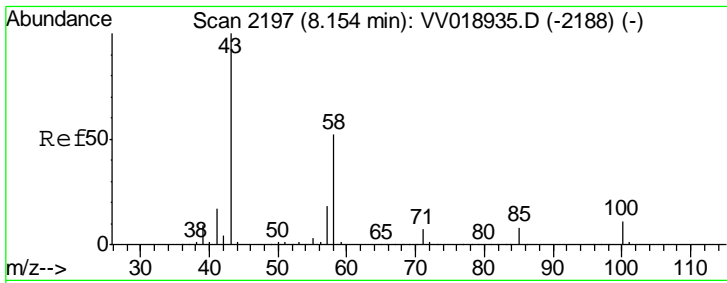
#46
 Tetrachloroethene
 Concen: 137.366 ug/L
 RT: 8.00 min Scan# 2148
 Delta R.T. 0.00 min
 Lab File: VV018940.D
 Acq: 16 Oct 2020 16:26

| Tgt Ion | Resp | Lower | Upper |
|---------|-------|-------|-------|
| 164 | 100 | | |
| 129 | 91.5 | 65.0 | 120.8 |
| 131 | 87.4 | 62.9 | 116.7 |
| 166 | 128.7 | 91.1 | 169.3 |



Abundance Ion 164.00 (163.70 to 164.70): VV018940.D (-2054) (-)
 Ion 129.00 (128.70 to 129.70): VV018940.D (-2054) (-)
 Ion 131.00 (130.70 to 131.70): VV018940.D (-2054) (-)
 Ion 166.00 (165.70 to 166.70): VV018940.D (-2054) (-)

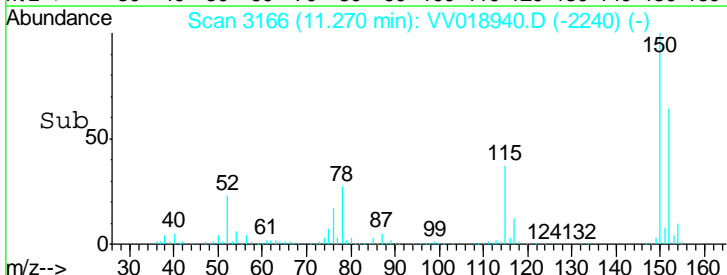
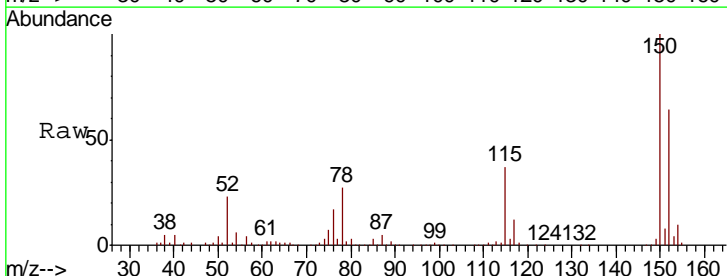
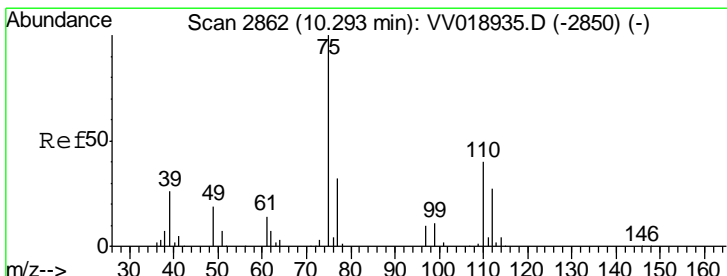
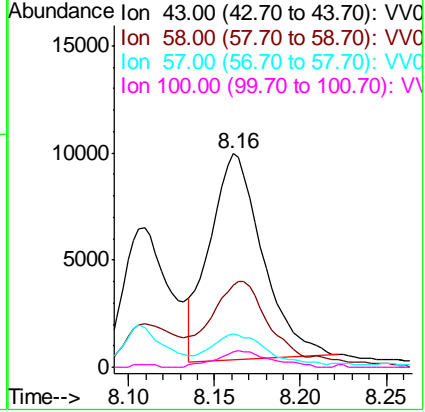




#48
 2-Hexanone
 Concen: 8.092 ug/L
 RT: 8.16 min Scan# 2199
 Delta R.T. 0.01 min
 Lab File: VV018940.D
 Acq: 16 Oct 2020 16:26

Instrument : MSVOA_V
 ClientSampled : BG404

| Tgt Ion | Resp | Lower | Upper |
|---------|------|-------|-------|
| 43 | 100 | | |
| 58 | 37.1 | 42.5 | 63.7# |
| 57 | 16.9 | 14.5 | 21.7 |
| 100 | 8.1 | 9.0 | 13.4# |



#59
 1,2,3-Trichloropropane
 Concen: 5.621 ug/L
 RT: 11.27 min Scan# 3166
 Delta R.T. 0.98 min
 Lab File: VV018940.D
 Acq: 16 Oct 2020 16:26

| Tgt Ion | Resp | Lower | Upper |
|---------|------|-------|-------|
| 75 | 100 | | |
| 77 | 39.6 | 25.4 | 38.2# |

