

Data Path : Z:\VOASRV\HPCHEM1\MSVOA V\DATA\VV101620\
 Data File : VV018947.D
 Acq On : 16 Oct 2020 19:13
 Operator : SY/MD
 Sample : L4382-12MEDL 200X
 Misc : 5.79µ/5.0 mL/100uL/5.0mL/MSVOA_V/MEOH
 ALS Vial : 13 Sample Multiplier: 1

Instrument :
 MSVOA_V
 ClientSampleId :
 BG3Y0MEDL

Quant Time: Oct 17 07:03:24 2020
 Quant Method : Z:\VOASRV\HPCHEM1\MSVOA_V\METHOD\SOMVLM101420WMA.M
 Quant Title : VOC Analysis
 QLast Update : Sat Oct 17 05:56:05 2020
 Response via : Initial Calibration

Internal Standards	R.T.	QIon	Response	Conc	Units	Dev(Min)
1) 1,4-Difluorobenzene	5.64	114	310576	50.00	µg/L	0.00
28) Chlorobenzene-d5	8.87	117	315303	50.00	µg/L	0.00
60) 1,4-Dichlorobenzene-d4	11.27	152	143953	50.00	µg/L	0.00

System Monitoring Compounds

4) Vinyl Chloride-d3	1.31	65	107681	42.12	µg/L	0.00
Spiked Amount	50.000	Range	60 - 135	Recovery	=	84.24%
7) Chloroethane-d5	1.58	69	90496	44.68	µg/L	0.00
Spiked Amount	50.000	Range	70 - 130	Recovery	=	89.36%
11) 1,1-Dichloroethene-d2	2.12	63	168339	34.88	µg/L	0.00
Spiked Amount	50.000	Range	60 - 125	Recovery	=	69.76%
21) 2-Butanone-d5	3.90	46	172610	96.86	µg/L	0.00
Spiked Amount	100.000	Range	40 - 130	Recovery	=	96.86%
24) Chloroform-d	4.38	84	210107	45.74	µg/L	0.00
Spiked Amount	50.000	Range	70 - 125	Recovery	=	91.48%
26) 1,2-Dichloroethane-d4	5.06	65	150074	49.22	µg/L	0.00
Spiked Amount	50.000	Range	70 - 125	Recovery	=	98.44%
32) Benzene-d6	5.07	84	413888	44.96	µg/L	0.00
Spiked Amount	50.000	Range	70 - 125	Recovery	=	89.92%
36) 1,2-Dichloropropane-d6	6.09	67	139351	47.35	µg/L	0.00
Spiked Amount	50.000	Range	70 - 120	Recovery	=	94.70%
41) Toluene-d8	7.34	98	361923	43.83	µg/L	0.00
Spiked Amount	50.000	Range	80 - 120	Recovery	=	87.66%
43) trans-1,3-Dichloropropene-	7.64	79	63631	44.23	µg/L	0.00
Spiked Amount	50.000	Range	60 - 125	Recovery	=	88.46%
47) 2-Hexanone-d5	8.11	63	93022	85.09	µg/L	0.00
Spiked Amount	100.000	Range	45 - 130	Recovery	=	85.09%
57) 1,1,2,2-Tetrachloroethane-	10.23	84	141685	41.08	µg/L	0.00
Spiked Amount	50.000	Range	65 - 120	Recovery	=	82.16%
64) 1,2-Dichlorobenzene-d4	11.65	152	144443	49.32	µg/L	0.00
Spiked Amount	50.000	Range	80 - 120	Recovery	=	98.64%

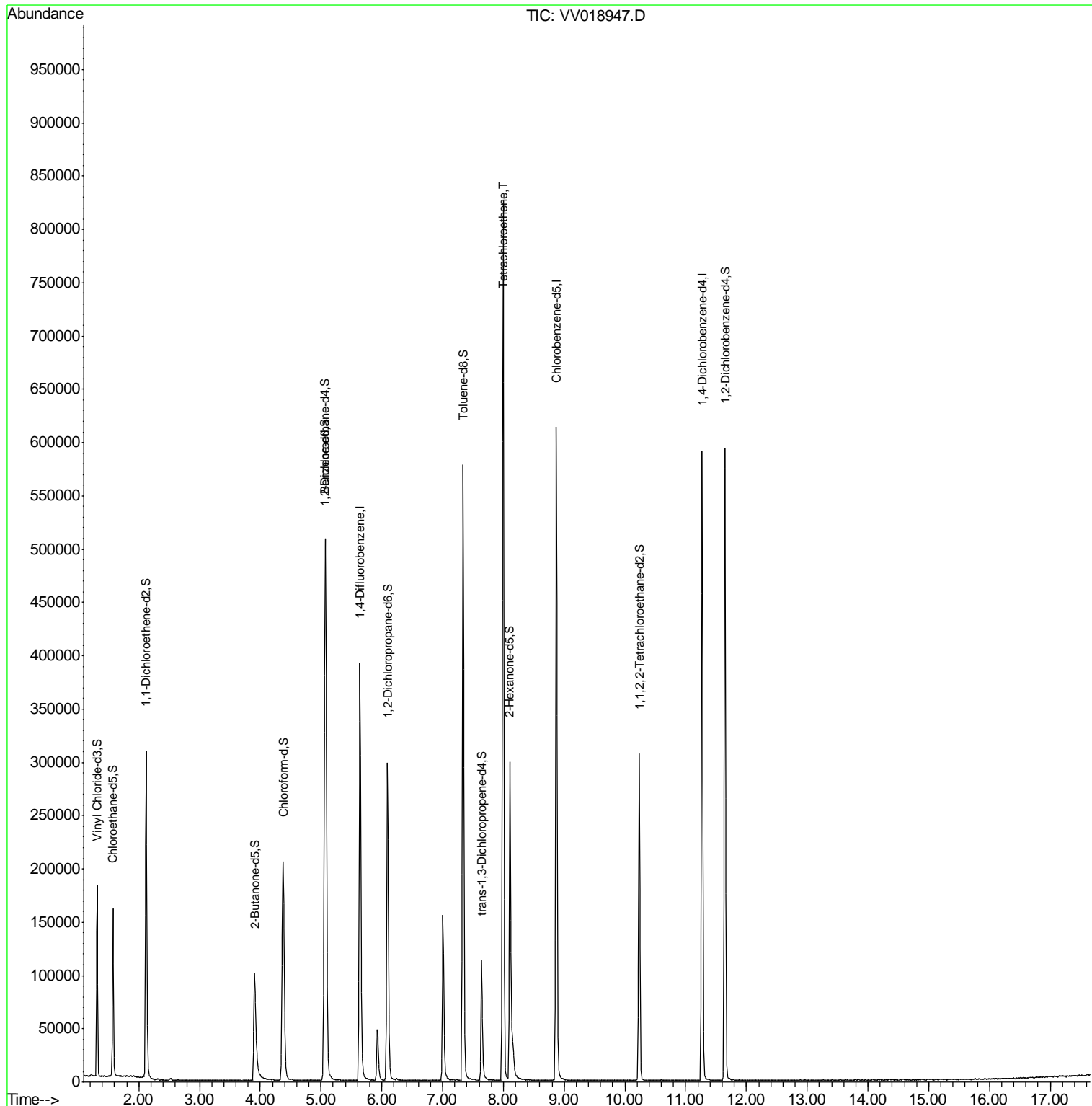
Target Compounds					Ovalue
46) Tetrachloroethene	8.00	164	176946	90.080	µg/L 99

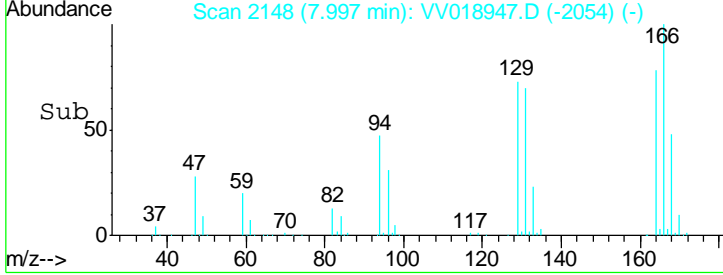
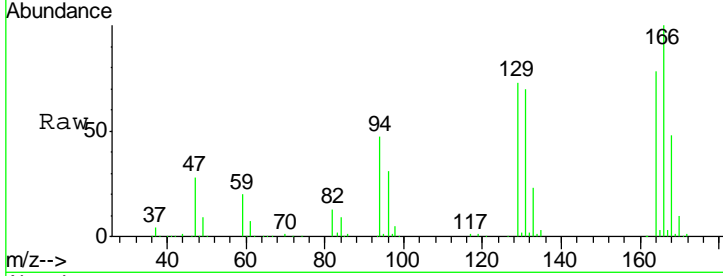
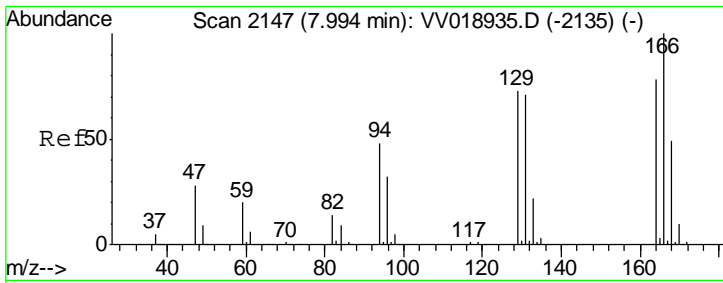
(#) = qualifier out of range (m) = manual integration (+) = signals summed

Data Path : Z:\VOASRV\HPCHEM1\MSVOA V\DATA\VV101620\
 Data File : VV018947.D
 Acq On : 16 Oct 2020 19:13
 Operator : SY/MD
 Sample : L4382-12MEDL 200X
 Misc : 5.79µ/5.0 mL/100µL/5.0mL/MSVOA_V/MEOH
 ALS Vial : 13 Sample Multiplier: 1

Instrument :
 MSVOA_V
 ClientSampleId :
 BG3Y0MEDL

Quant Time: Oct 17 07:03:24 2020
 Quant Method : Z:\VOASRV\HPCHEM1\MSVOA_V\METHOD\SOMVLM101420WMA.M
 Quant Title : VOC Analysis
 QLast Update : Sat Oct 17 05:56:05 2020
 Response via : Initial Calibration





#46
 Tetrachloroethene
 Concen: 90.080 ug/L
 RT: 8.00 min Scan# 2148
 Delta R.T. 0.00 min
 Lab File: VV018947.D
 Acq: 16 Oct 2020 19:13

Instrument :
 MSVOA_V
 ClientSampleId :
 BG3Y0MEDL

Tot Ion:164 Resp: 176946

Ion	Ratio	Lower	Upper
164	100		
129	93.8	65.0	120.8
131	90.6	62.9	116.7
166	128.9	91.1	169.3

