

Data Path : Z:\VOASRV\HPCHEM1\MSVOA V\DATA\VV101818\
 Data File : VV008349.D
 Acq On : 18 Oct 2018 18:23
 Operator : SY/MD
 Sample : J5464-15
 Misc : 25.0 mL/MSVOA V/WATER
 ALS Vial : 20 Sample Multiplier: 1

Instrument :
 MSVOA_V
 ClientSampleId :
 C0JF0

Quant Time: Oct 19 09:05:36 2018
 Quant Method : Z:\VOASRV\HPCHEM1\MSVOA_V\METHOD\SOMVTR101518WMA.M
 Quant Title : TRACE VOA SOM01.0
 QLast Update : Fri Oct 19 05:24:39 2018
 Response via : Initial Calibration

Internal Standards	R.T.	QIon	Response	Conc	Units	Dev(Min)
1) 1,4-Difluorobenzene	5.67	114	110055	5.00	ug/L	0.00
28) Chlorobenzene-d5	8.90	117	98453	5.00	ug/L	0.00
60) 1,4-Dichlorobenzene-d4	11.30	152	40091	5.00	ug/L	0.00

System Monitoring Compounds

4) Vinyl Chloride-d3	1.32	65	26105	4.20	ug/L	0.00
Spiked Amount	5.000	Range	40 - 130	Recovery	=	84.00%
7) Chloroethane-d5	1.58	69	18732	3.82	ug/L	0.00
Spiked Amount	5.000	Range	65 - 130	Recovery	=	76.40%
11) 1,1-Dichloroethene-d2	2.13	63	41267	3.46	ug/L	0.00
Spiked Amount	5.000	Range	60 - 125	Recovery	=	69.20%
20) 2-Butanone-d5	3.97	46	95904	45.97	ug/L	-0.01
Spiked Amount	50.000	Range	40 - 130	Recovery	=	91.94%
24) Chloroform-d	4.41	84	57535	4.14	ug/L	0.00
Spiked Amount	5.000	Range	70 - 125	Recovery	=	82.80%
26) 1,2-Dichloroethane-d4	5.09	65	30139	4.27	ug/L	0.00
Spiked Amount	5.000	Range	70 - 130	Recovery	=	85.40%
32) Benzene-d6	5.10	84	123540	4.27	ug/L	0.00
Spiked Amount	5.000	Range	70 - 125	Recovery	=	85.40%
36) 1,2-Dichloropropane-d6	6.12	67	42042	4.42	ug/L	0.00
Spiked Amount	5.000	Range	60 - 140	Recovery	=	88.40%
41) Toluene-d8	7.36	98	109903	4.19	ug/L	0.00
Spiked Amount	5.000	Range	70 - 130	Recovery	=	83.80%
43) trans-1,3-Dichloropropene-	7.67	79	13704	3.47	ug/L	0.00
Spiked Amount	5.000	Range	55 - 130	Recovery	=	69.40%
46) 2-Hexanone-d5	8.14	63	60386	43.63	ug/L	0.00
Spiked Amount	50.000	Range	45 - 130	Recovery	=	87.26%
57) 1,1,2,2-Tetrachloroethane-	10.27	84	24621	3.90	ug/L	0.00
Spiked Amount	5.000	Range	65 - 120	Recovery	=	78.00%
64) 1,2-Dichlorobenzene-d4	11.68	152	33399	4.39	ug/L	0.00
Spiked Amount	5.000	Range	80 - 120	Recovery	=	87.80%

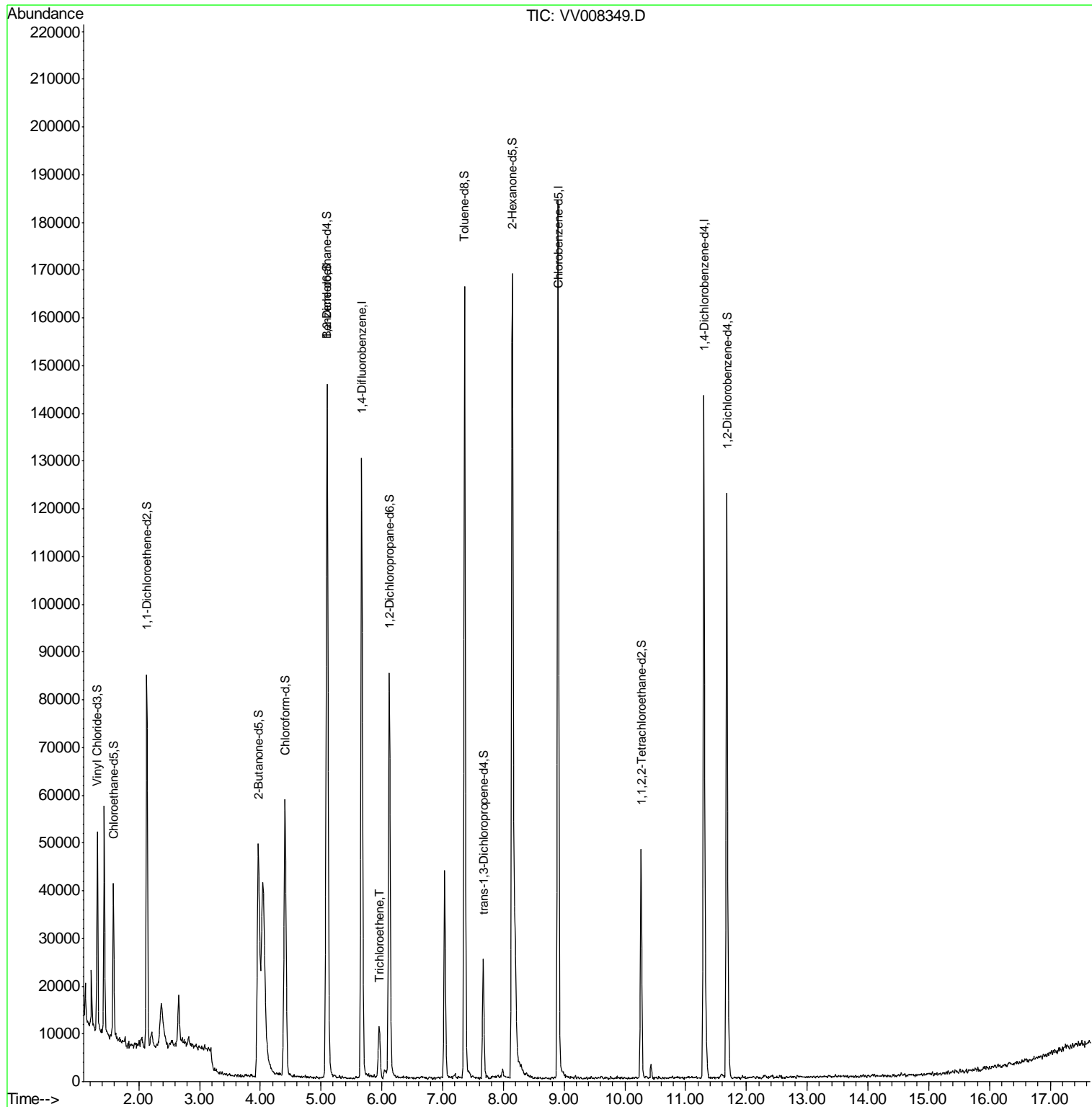
Target Compounds					Ovalue
34) Trichloroethene	5.96	95	2405	0.262 ug/L	91

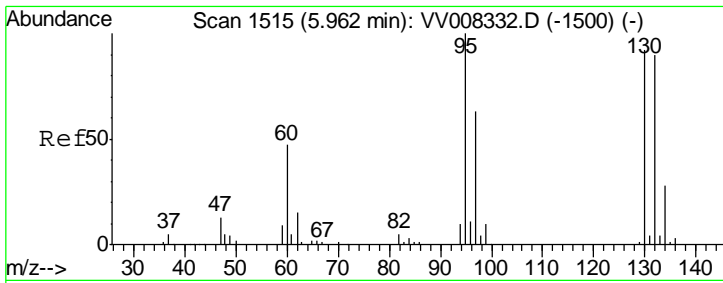
(#) = qualifier out of range (m) = manual integration (+) = signals summed

Data Path : Z:\VOASRV\HPCHEM1\MSVOA V\DATA\VV101818\
 Data File : VV008349.D
 Acq On : 18 Oct 2018 18:23
 Operator : SY/MD
 Sample : J5464-15
 Misc : 25.0 mL/MSVOA V/WATER
 ALS Vial : 20 Sample Multiplier: 1

Instrument :
 MSVOA_V
 ClientSampled :
 C0JF0

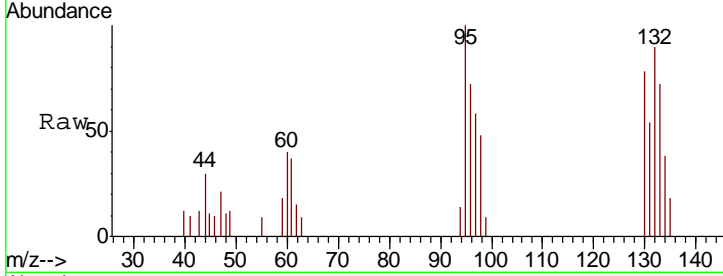
Quant Time: Oct 19 09:05:36 2018
 Quant Method : Z:\VOASRV\HPCHEM1\MSVOA_V\METHOD\SOMVTR101518WMA.M
 Quant Title : TRACE VOA SOM01.0
 QLast Update : Fri Oct 19 05:24:39 2018
 Response via : Initial Calibration





#34
 Trichloroethene
 Concen: 0.262 ug/L
 RT: 5.96 min Scan# 1515
 Delta R.T. -0.00 min
 Lab File: VV008349.D
 Acq: 18 Oct 2018 18:23

Instrument : MSVOA_V
 ClientSampled : C0JF0



Tot Ion: 95 Resp: 2405

Ion	Ratio	Lower	Upper
95	100		
97	58.1	44.4	82.4
132	89.6	60.4	112.2
130	78.3	65.5	121.7

