

Data Path : Z:\voasrv\HPCHEM1\MSVOA_V\Data\VW101821\
 Data File : VV022866.D
 Acq On : 18 Oct 2021 15:06
 Operator : SY/MD
 Sample : M4246-11
 Misc : 25.0mL/MSVOA_V/WATER
 ALS Vial : 13 Sample Multiplier: 1

Instrument :
 MSVOA_V
 ClientSampled :
 YAT49

Quant Time: Oct 19 01:44:42 2021
 Quant Method : Z:\voasrv\HPCHEM1\MSVOA_V\Method\SFAMVTR100721WMA.M
 Quant Title : TRACE VOA SFAM1.0
 QLast Update : Tue Oct 19 01:43:03 2021
 Response via : Initial Calibration

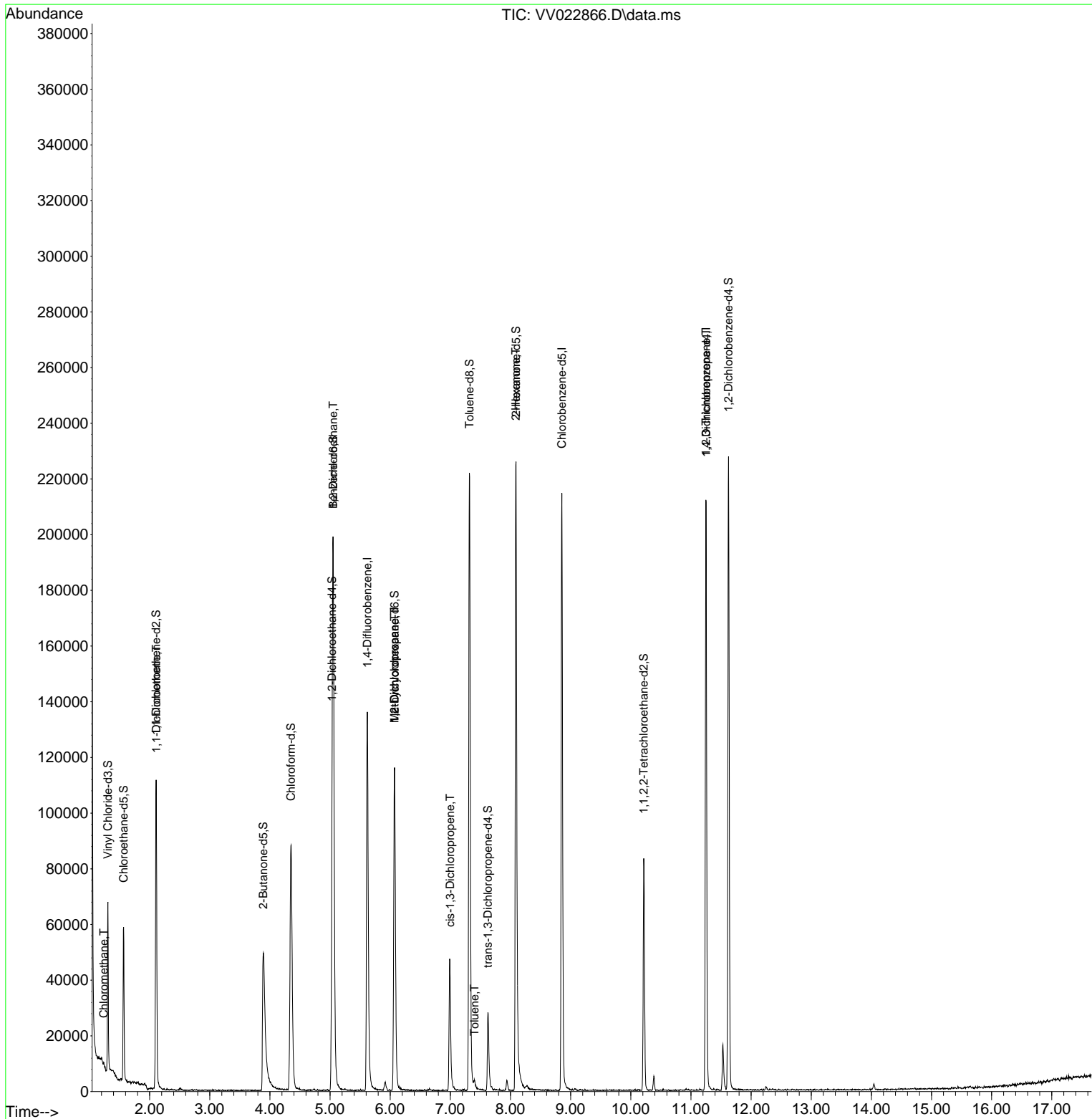
Compound	R.T.	QIon	Response	Conc	Units	Dev(Min)
Internal Standards						
1) 1,4-Difluorobenzene	5.619	114	121835	5.000	ug/L	0.00
28) Chlorobenzene-d5	8.854	117	123972	5.000	ug/L	0.00
58) 1,4-Dichlorobenzene-d4	11.252	152	57545	5.000	ug/L	0.00
System Monitoring Compounds						
4) Vinyl Chloride-d3	1.304	65	38046	4.539	ug/L	0.00
Spiked Amount	5.000	Range 40 - 130	Recovery	=	90.800%	
7) Chloroethane-d5	1.568	69	34264	4.549	ug/L	0.00
Spiked Amount	5.000	Range 65 - 130	Recovery	=	91.000%	
11) 1,1-Dichloroethene-d2	2.108	63	57349	3.488	ug/L	0.00
Spiked Amount	5.000	Range 60 - 125	Recovery	=	69.800%	
20) 2-Butanone-d5	3.889	46	97574	44.394	ug/L	0.00
Spiked Amount	50.000	Range 40 - 130	Recovery	=	88.780%	
24) Chloroform-d	4.349	84	93992	5.441	ug/L	0.00
Spiked Amount	5.000	Range 70 - 125	Recovery	=	108.800%	
26) 1,2-Dichloroethane-d4	5.034	65	42499	5.069	ug/L	0.00
Spiked Amount	5.000	Range 70 - 130	Recovery	=	101.400%	
32) Benzene-d6	5.053	84	181803	4.926	ug/L	0.00
Spiked Amount	5.000	Range 70 - 125	Recovery	=	98.600%	
36) 1,2-Dichloropropane-d6	6.072	67	57943	5.302	ug/L	0.00
Spiked Amount	5.000	Range 60 - 140	Recovery	=	106.000%	
41) Toluene-d8	7.317	98	150902	4.730	ug/L	0.00
Spiked Amount	5.000	Range 70 - 130	Recovery	=	94.600%	
43) trans-1,3-Dichloroprop...	7.625	79	17438	4.810	ug/L	0.00
Spiked Amount	5.000	Range 55 - 130	Recovery	=	96.200%	
46) 2-Hexanone-d5	8.092	63	77163	52.811	ug/L	0.00
Spiked Amount	50.000	Range 45 - 130	Recovery	=	105.620%	
56) 1,1,2,2-Tetrachloroeth...	10.217	84	39237	5.299	ug/L	0.00
Spiked Amount	5.000	Range 65 - 120	Recovery	=	106.000%	
66) 1,2-Dichlorobenzene-d4	11.625	152	60145	5.637	ug/L	0.00
Spiked Amount	5.000	Range 80 - 120	Recovery	=	112.800%	
Target Compounds						
3) Chloromethane	1.240	50	671	0.075	ug/L	99
12) 1,1-Dichloroethene	2.111	96	534	0.073	ug/L #	1
27) 1,2-Dichloroethane	5.053	62	1087	0.130	ug/L #	69
35) Methylcyclohexane	6.072	83	14234	1.119	ug/L #	17
37) 1,2-Dichloropropane	6.072	63	6189	0.771	ug/L #	84
39) cis-1,3-Dichloropropene	6.995	75	1234	0.116	ug/L	87
42) Toluene	7.404	91	2466	0.073	ug/L	99
48) 2-Hexanone	8.088	43	9251	2.932	ug/L #	69
61) 1,2,3-Trichloropropane	11.249	75	6156	1.540	ug/L #	61

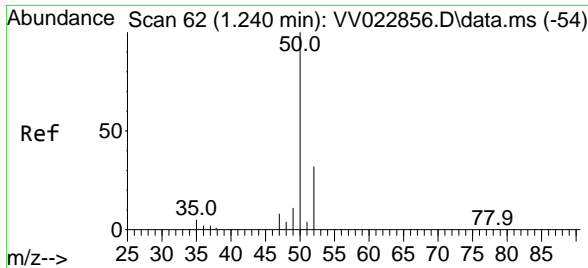
(#) = qualifier out of range (m) = manual integration (+) = signals summed

Data Path : Z:\voasrv\HPCHEM1\MSVOA_V\Data\VV101821\
 Data File : VV022866.D
 Acq On : 18 Oct 2021 15:06
 Operator : SY/MD
 Sample : M4246-11
 Misc : 25.0mL/MSVOA_V/WATER
 ALS Vial : 13 Sample Multiplier: 1

Instrument :
 MSVOA_V
 ClientSampleId :
 YAT49

Quant Time: Oct 19 01:44:42 2021
 Quant Method : Z:\voasrv\HPCHEM1\MSVOA_V\Method\SFAMVTR100721WMA.M
 Quant Title : TRACE VOA SFAM1.0
 QLast Update : Tue Oct 19 01:43:03 2021
 Response via : Initial Calibration

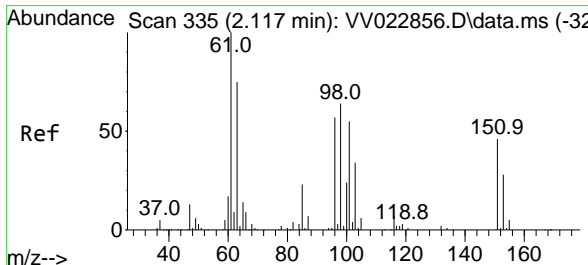
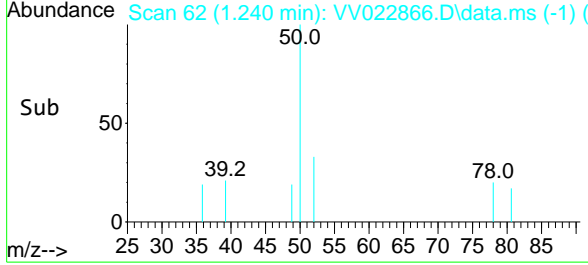
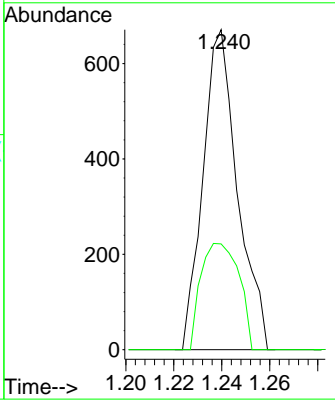
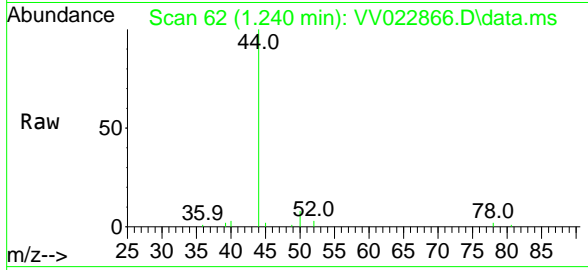




#3
 Chloromethane
 Concen: 0.075 ug/L
 RT: 1.240 min Scan# 62
 Delta R.T. 0.000 min
 Lab File: VV022866.D
 Acq: 18 Oct 2021 15:06

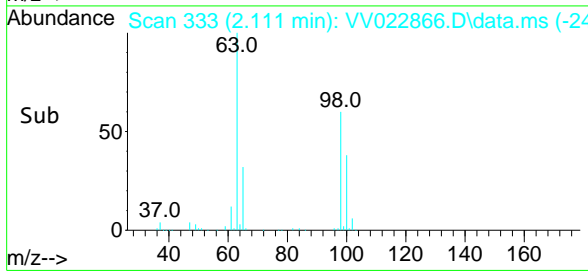
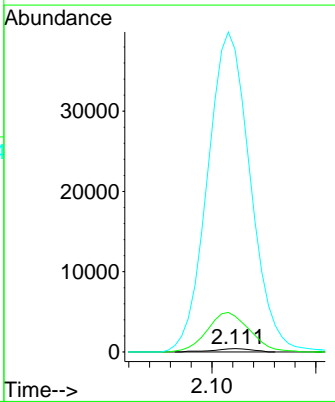
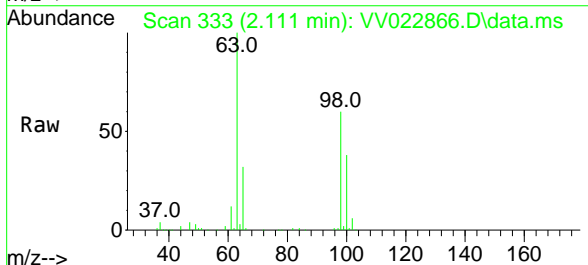
Instrument :
 MSVOA_V
 ClientSampled :
 YAT49

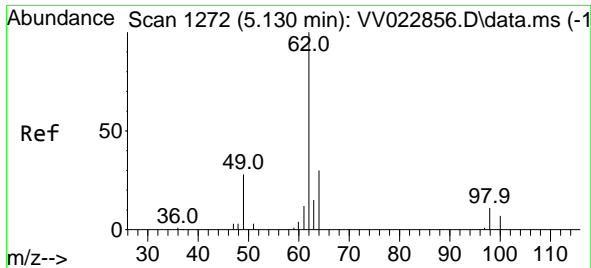
Tgt Ion: 50 Resp: 671
 Ion Ratio Lower Upper
 50 100
 52 33.1 22.9 42.5



#12
 1,1-Dichloroethene
 Concen: 0.073 ug/L
 RT: 2.111 min Scan# 333
 Delta R.T. -0.006 min
 Lab File: VV022866.D
 Acq: 18 Oct 2021 15:06

Tgt Ion: 96 Resp: 534
 Ion Ratio Lower Upper
 96 100
 61 1059.1 127.3 236.5#
 63 8955.8 106.2 197.2#

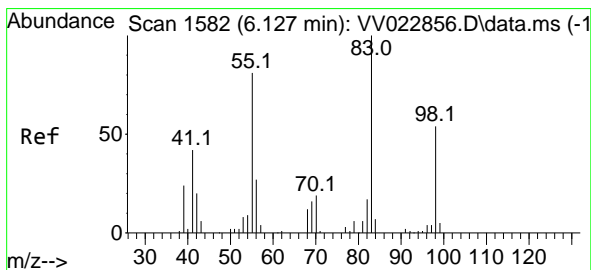
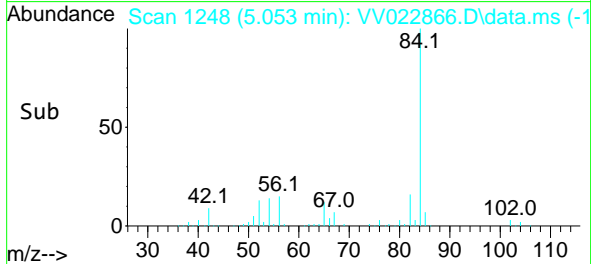
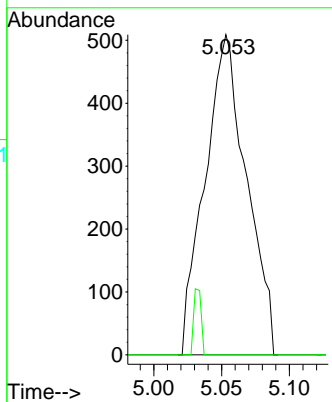
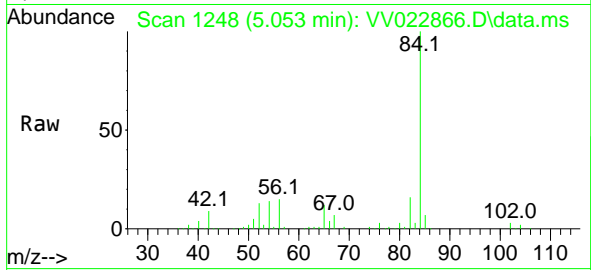




#27
 1,2-Dichloroethane
 Concen: 0.130 ug/L
 RT: 5.053 min Scan# 1248
 Delta R.T. -0.077 min
 Lab File: VV022866.D
 Acq: 18 Oct 2021 15:06

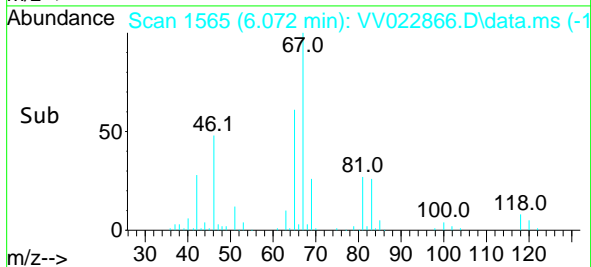
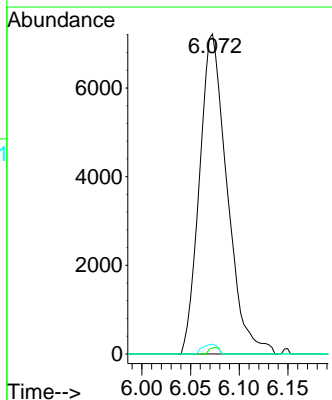
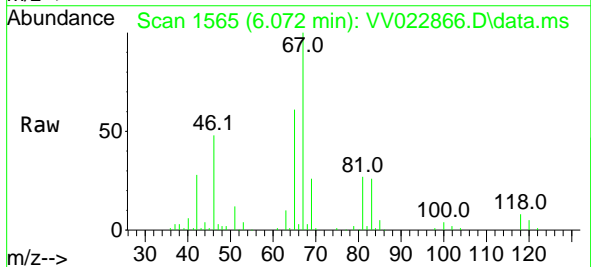
Instrument : MSVOA_V
 ClientSampled : YAT49

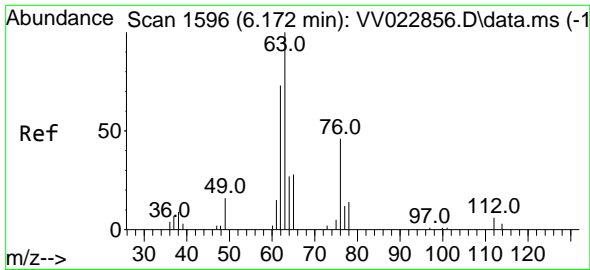
Tgt Ion: 62 Resp: 1087
 Ion Ratio Lower Upper
 62 100
 98 0.0 9.7 14.5#



#35
 Methylcyclohexane
 Concen: 1.119 ug/L
 RT: 6.072 min Scan# 1565
 Delta R.T. -0.055 min
 Lab File: VV022866.D
 Acq: 18 Oct 2021 15:06

Tgt Ion: 83 Resp: 14234
 Ion Ratio Lower Upper
 83 100
 55 0.7 63.8 95.6#
 98 1.6 42.1 63.1#

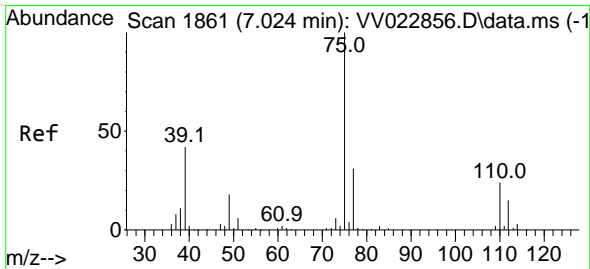
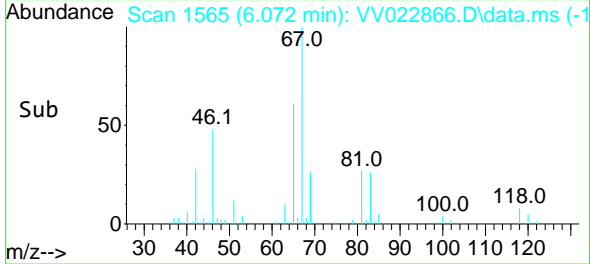
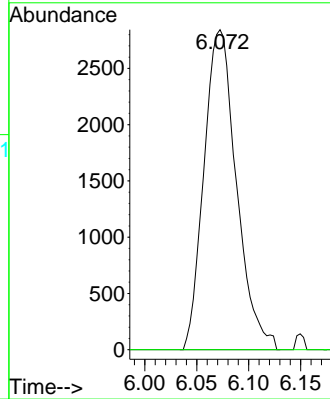
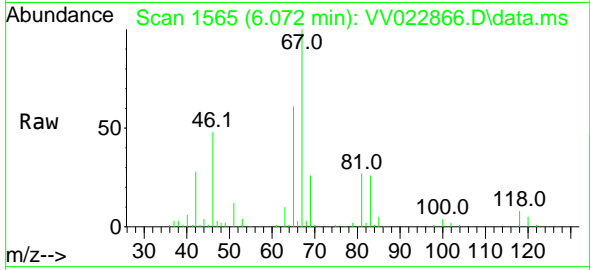




#37
 1,2-Dichloropropane
 Concen: 0.771 ug/L
 RT: 6.072 min Scan# 1565
 Delta R.T. -0.100 min
 Lab File: VV022866.D
 Acq: 18 Oct 2021 15:06

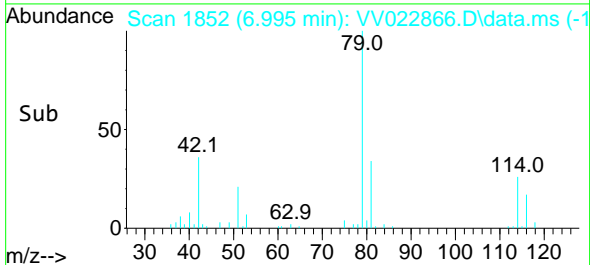
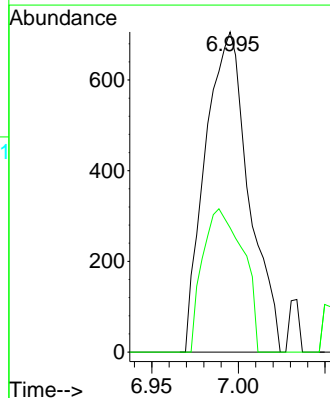
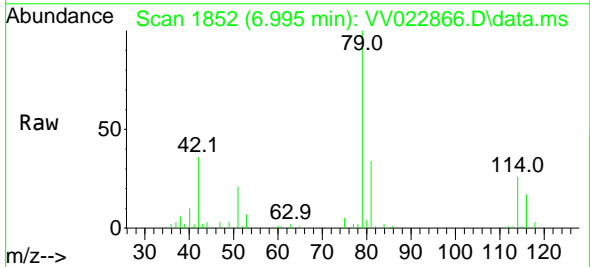
Instrument :
 MSVOA_V
 ClientSampled :
 YAT49

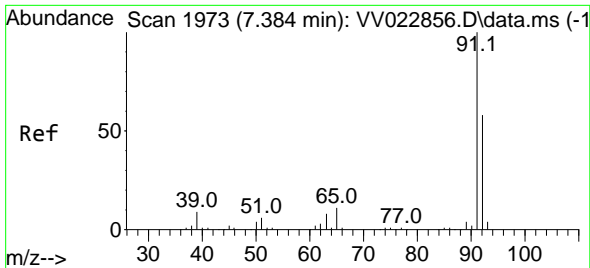
Tgt Ion: 63 Resp: 6189
 Ion Ratio Lower Upper
 63 100
 112 0.0 4.4 6.6#



#39
 cis-1,3-Dichloropropene
 Concen: 0.116 ug/L
 RT: 6.995 min Scan# 1852
 Delta R.T. -0.029 min
 Lab File: VV022866.D
 Acq: 18 Oct 2021 15:06

Tgt Ion: 75 Resp: 1234
 Ion Ratio Lower Upper
 75 100
 77 38.8 22.3 41.3

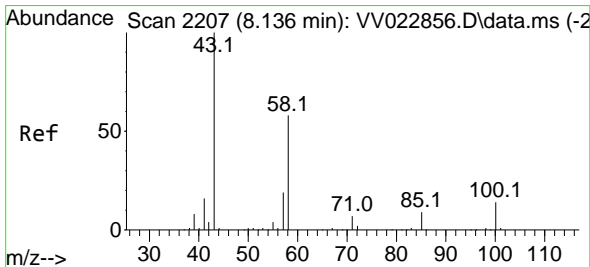
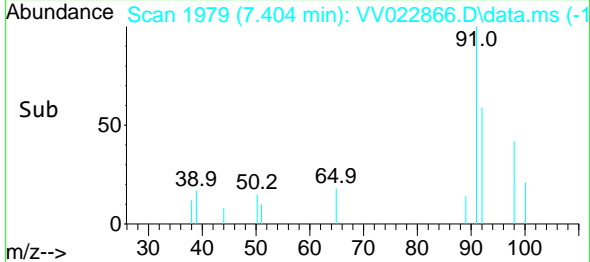
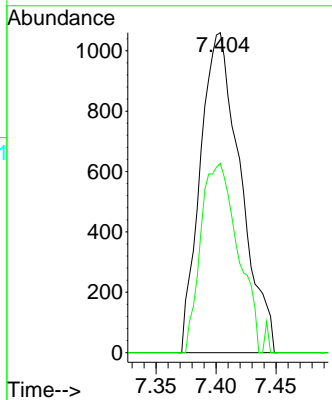
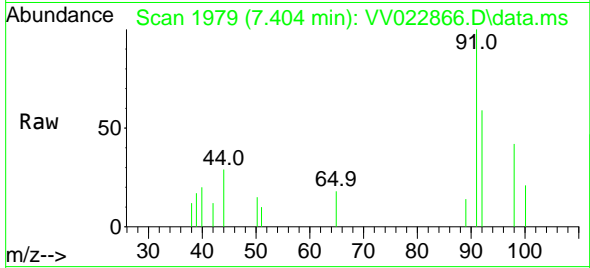




#42
 Toluene
 Concen: 0.073 ug/L
 RT: 7.404 min Scan# 1979
 Delta R.T. 0.019 min
 Lab File: VV022866.D
 Acq: 18 Oct 2021 15:06

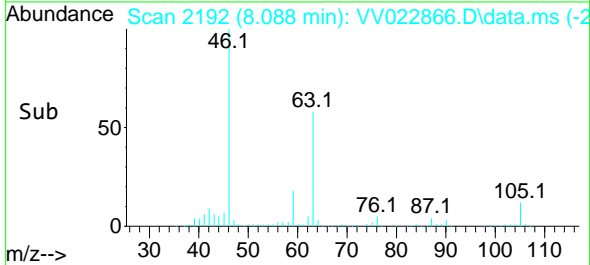
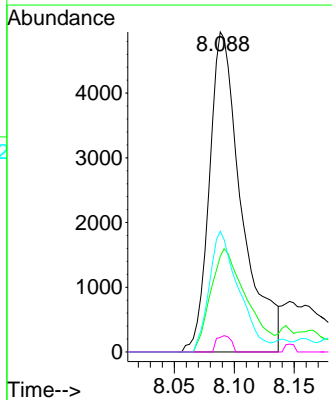
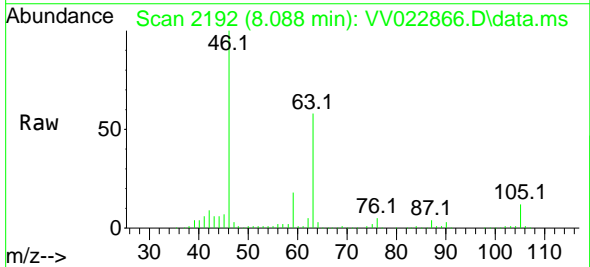
Instrument :
 MSVOA_V
 ClientSampled :
 YAT49

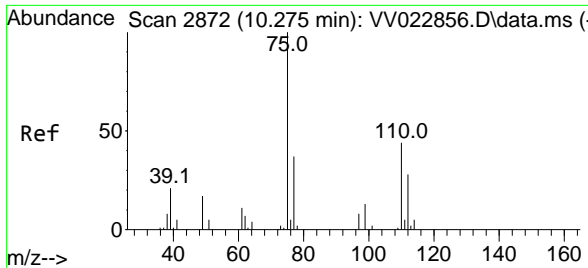
Tgt Ion: 91 Resp: 2466
 Ion Ratio Lower Upper
 91 100
 92 59.2 40.7 75.7



#48
 2-Hexanone
 Concen: 2.932 ug/L
 RT: 8.088 min Scan# 2192
 Delta R.T. -0.048 min
 Lab File: VV022866.D
 Acq: 18 Oct 2021 15:06

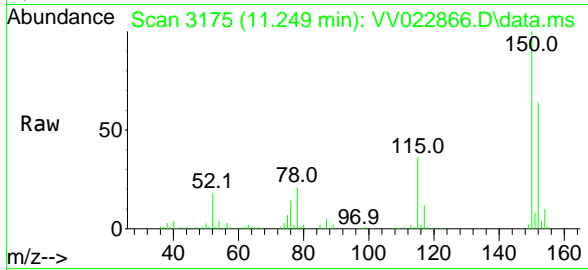
Tgt Ion: 43 Resp: 9251
 Ion Ratio Lower Upper
 43 100
 58 35.7 47.4 71.0#
 57 34.7 15.3 22.9#
 100 2.3 10.4 15.6#





#61
 1,2,3-Trichloropropane
 Concen: 1.540 ug/L
 RT: 11.249 min Scan# 3175
 Delta R.T. 0.974 min
 Lab File: VV022866.D
 Acq: 18 Oct 2021 15:06

Instrument :
 MSVOA_V
 ClientSampled :
 YAT49



Tgt Ion: 75 Resp: 6156

Ion	Ratio	Lower	Upper
75	100		
77	32.5	25.4	38.2
110	0.0	34.2	51.4#

