

Data Path : Z:\voasrv\HPCHEM1\MSVOA\_V\Data\VW101823\  
 Data File : VW032468.D  
 Acq On : 18 Oct 2023 13:55  
 Operator : SY/MD  
 Sample : 04903-10  
 Misc : 25.0mL/MSVOA\_V/WATER  
 ALS Vial : 12 Sample Multiplier: 1

Instrument :  
 MSVOA\_V  
 ClientSampleId :  
 COAF3

Integration Parameters: rteint.p

Integrator: RTE  
 Smoothing : ON  
 Sampling : 1  
 Start Thrs : 0.1  
 Stop Thrs : 0

Filtering: 5  
 Min Area: 3 % of largest Peak  
 Max Peaks: 100  
 Peak Location: TOP

If leading or trailing edge < 100 prefer < Baseline drop else tangent >  
 Peak separation: 5

Method : Z:\voasrv\HPCHEM1\MSVOA\_V\Method\SFAMVTR092923WMA.M  
 Title : TRACE VOA SFAM1.0

Signal : TIC: VW032468.D\data.ms

peak #	R.T. min	first scan	max scan	last scan	PK TY	peak height	corr. area	corr. % max.	% of total
1	1.278	65	74	87	rBV	72287	75618	16.93%	1.851%
2	1.352	91	97	105	rBV	12841	16033	3.59%	0.392%
3	1.532	144	153	163	rBV	58739	68902	15.42%	1.686%
4	1.597	167	173	184	rVB8	3037	4632	1.04%	0.113%
5	2.060	307	317	331	rBV	94118	140794	31.51%	3.446%
6	2.127	334	338	345	rVV3	5014	7789	1.74%	0.191%
7	2.185	348	356	369	rVB3	13765	25131	5.63%	0.615%
8	2.706	506	518	532	rVB5	4883	11136	2.49%	0.273%
9	2.886	563	574	586	rBV	13253	28326	6.34%	0.693%
10	3.799	849	858	891	rBV	48288	157177	35.18%	3.847%
11	4.256	983	1000	1024	rBV3	66813	223559	50.04%	5.471%
12	4.375	1025	1037	1059	rVB5	13200	45656	10.22%	1.117%
13	4.960	1202	1219	1238	rBV2	151523	387724	86.78%	9.489%
14	5.243	1298	1307	1326	rBV5	11259	25267	5.66%	0.618%
15	5.426	1353	1364	1377	rBV2	12174	25937	5.81%	0.635%
16	5.539	1386	1399	1416	rBV	111999	238843	53.46%	5.845%
17	5.992	1524	1540	1553	rBV2	88208	188751	42.25%	4.619%
18	6.436	1666	1678	1689	rBV	47043	90979	20.36%	2.227%
19	6.918	1819	1828	1856	rVB	38593	78304	17.53%	1.916%
20	7.185	1900	1911	1919	rBV2	11866	24543	5.49%	0.601%
21	7.246	1919	1930	1951	rVV	172093	325931	72.95%	7.976%
22	7.368	1961	1968	1985	rVB2	15747	33640	7.53%	0.823%
23	7.558	2018	2027	2035	rBV	23562	42651	9.55%	1.044%
24	7.876	2114	2126	2128	rBV7	7767	9669	2.16%	0.237%
25	8.031	2163	2174	2208	rBV	214912	446766	100.00%	10.934%
26	8.182	2209	2221	2241	rVB	53914	106659	23.87%	2.610%
27	8.789	2393	2410	2431	rBV	183040	326410	73.06%	7.988%
28	8.870	2433	2435	2450	rVV9	4243	7606	1.70%	0.186%
29	8.957	2452	2462	2472	rVB2	3860	7016	1.57%	0.172%
30	9.085	2492	2502	2509	rBV6	4650	7327	1.64%	0.179%
31	9.670	2675	2684	2697	rVB2	10455	18103	4.05%	0.443%
32	10.156	2824	2835	2850	rBV2	71421	114979	25.74%	2.814%
33	10.330	2879	2889	2900	rVB3	15977	26627	5.96%	0.652%
34	10.452	2917	2927	2948	rVB	26079	45927	10.28%	1.124%
35	11.101	3121	3129	3134	rBV7	3285	5098	1.14%	0.125%
36	11.188	3145	3156	3174	rBV	190767	306097	68.51%	7.491%

Data Path : Z:\voasrv\HPCHEM1\MSVOA\_V\Data\VW101823\  
Data File : VV032468.D  
Acq On : 18 Oct 2023 13:55  
Operator : SY/MD  
Sample : 04903-10  
Misc : 25.0mL/MSVOA\_V/WATER  
ALS Vial : 12 Sample Multiplier: 1

Instrument :  
MSVOA\_V  
ClientSampleId :  
C0AF3

Integration Parameters: rteint.p  
Integrator: RTE  
Smoothing : ON Filtering: 5  
Sampling : 1 Min Area: 3 % of largest Peak  
Start Thrs: 0.1 Max Peaks: 100  
Stop Thrs : 0 Peak Location: TOP

If leading or trailing edge < 100 prefer < Baseline drop else tangent >  
Peak separation: 5

Method : Z:\voasrv\HPCHEM1\MSVOA\_V\Method\SFAMVTR092923WMA.M  
Title : TRACE VOA SFAM1.0

37	11.493	3243	3251	3262	rBV4	7900	17087	3.82%	0.418%
38	11.564	3262	3273	3292	rVB	182326	289738	64.85%	7.091%
39	11.680	3299	3309	3317	rVB	3471	5711	1.28%	0.140%
40	12.198	3461	3470	3480	rBV2	7678	12179	2.73%	0.298%
41	12.294	3488	3500	3509	rBV9	4726	8259	1.85%	0.202%
42	13.445	3848	3858	3869	rBV2	32726	52187	11.68%	1.277%
43	13.989	4018	4027	4037	rBV	3209	5389	1.21%	0.132%

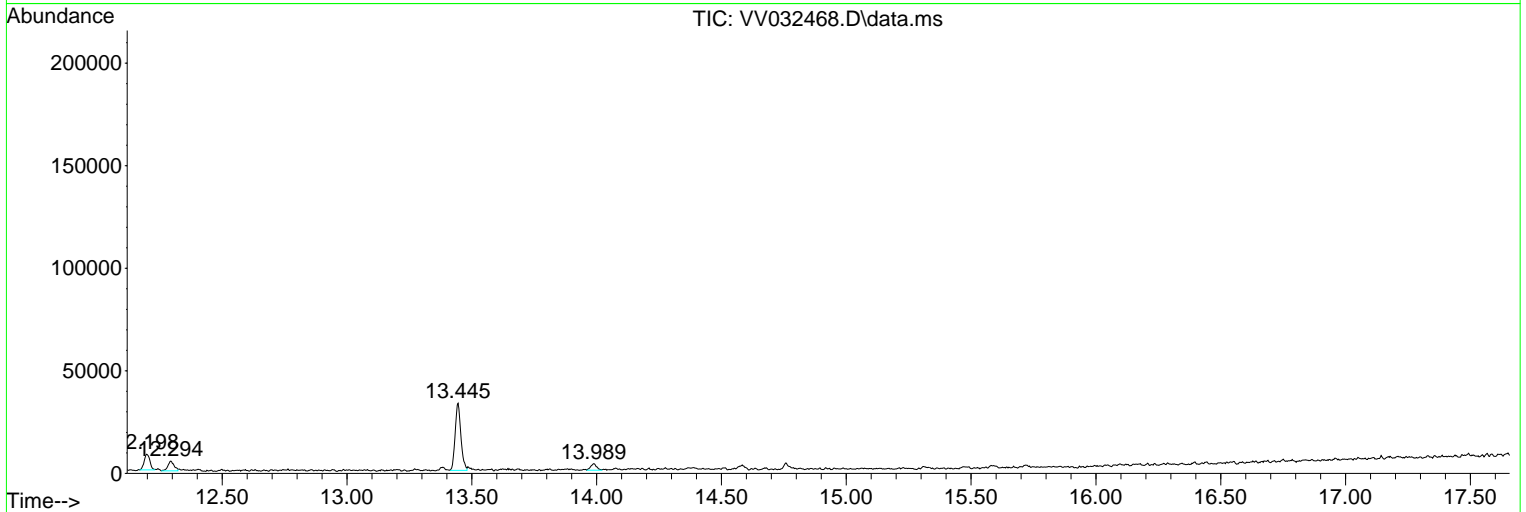
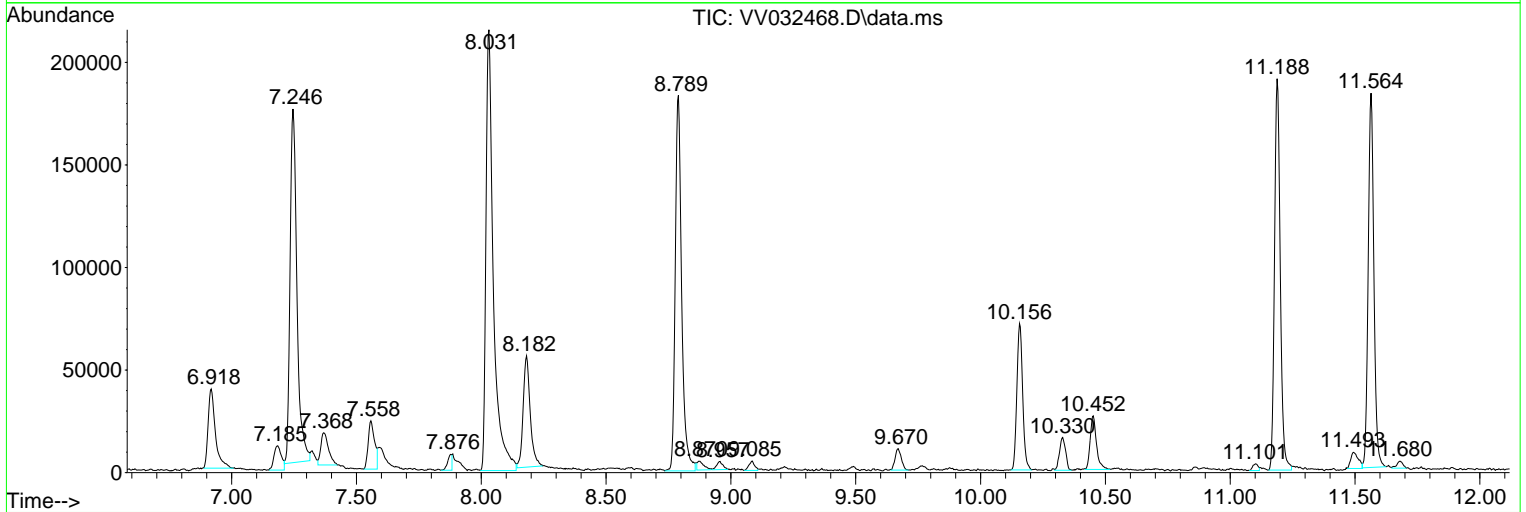
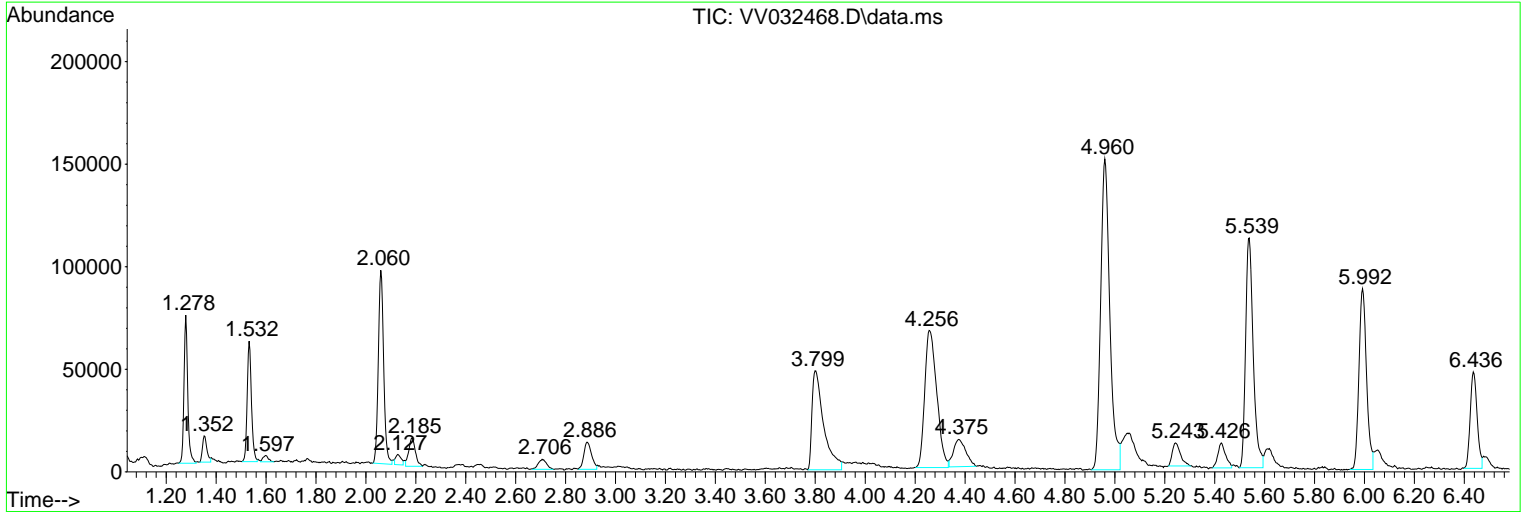
Sum of corrected areas: 4086157

Data Path : Z:\voasrv\HPCHEM1\MSVOA\_V\Data\VV101823\  
 Data File : VV032468.D  
 Acq On : 18 Oct 2023 13:55  
 Operator : SY/MD  
 Sample : 04903-10  
 Misc : 25.0mL/MSVOA\_V/WATER  
 ALS Vial : 12 Sample Multiplier: 1

Instrument :  
 MSVOA\_V  
 ClientSampleId :  
 C0AF3

Quant Method : Z:\voasrv\HPCHEM1\MSVOA\_V\Method\SFAMVTR092923WMA.M  
 Quant Title : TRACE VOA SFAM1.0

TIC Library : C:\Database\NIST20.L  
 TIC Integration Parameters: LSCINT.P



Data Path : Z:\voasrv\HPCHEM1\MSVOA\_V\Data\VV101823\  
 Data File : VV032468.D  
 Acq On : 18 Oct 2023 13:55  
 Operator : SY/MD  
 Sample : 04903-10  
 Misc : 25.0mL/MSVOA\_V/WATER  
 ALS Vial : 12 Sample Multiplier: 1

Instrument :  
 MSVOA\_V  
 ClientSampleId :  
 COAF3

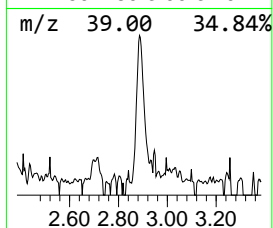
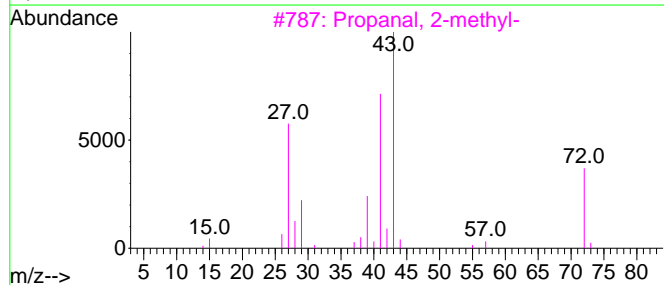
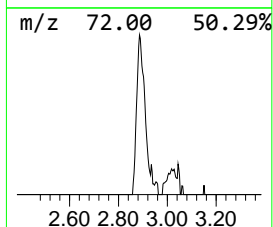
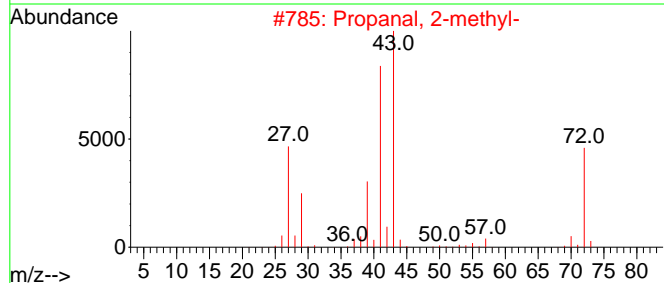
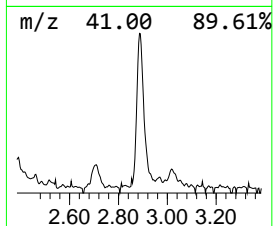
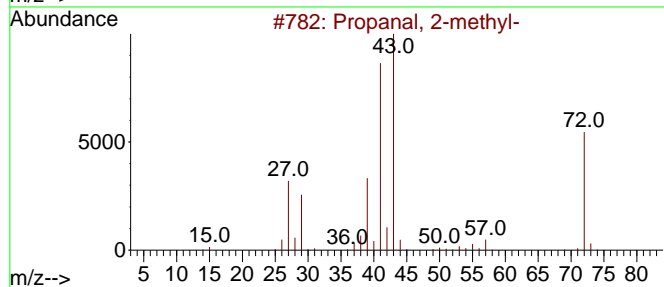
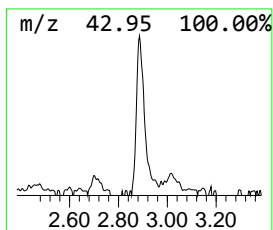
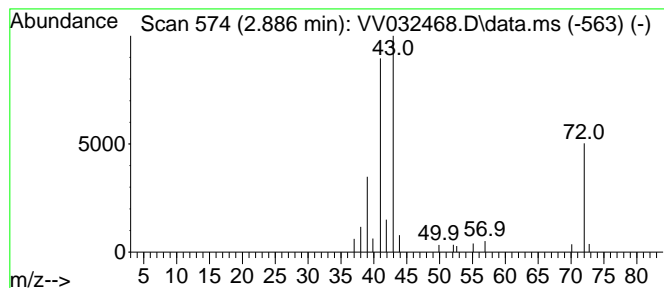
Quant Method : Z:\voasrv\HPCHEM1\MSVOA\_V\Method\SFAMVTR092923WMA.M  
 Quant Title : TRACE VOA SFAM1.0

TIC Library : C:\Database\NIST20.L  
 TIC Integration Parameters: LSCINT.P

\*\*\*\*\*  
 Peak Number 2 Propanal, 2-methyl- Concentration Rank 5

R.T.	EstConc	Area	Relative to ISTD	R.T.
2.886	0.59 ug/L	28326	1,4-Difluorobenzene	5.539

Hit#	of 5	Tentative ID	MW	MolForm	CAS#	Qual
1		Propanal, 2-methyl-	72	C4H8O	000078-84-2	90
2		Propanal, 2-methyl-	72	C4H8O	000078-84-2	86
3		Propanal, 2-methyl-	72	C4H8O	000078-84-2	86
4		Butanal	72	C4H8O	000123-72-8	72
5		Propanal, 2-methyl-	72	C4H8O	000078-84-2	64



Data Path : Z:\voasrv\HPCHEM1\MSVOA\_V\Data\VV101823\  
 Data File : VV032468.D  
 Acq On : 18 Oct 2023 13:55  
 Operator : SY/MD  
 Sample : 04903-10  
 Misc : 25.0mL/MSVOA\_V/WATER  
 ALS Vial : 12 Sample Multiplier: 1

Instrument :  
 MSVOA\_V  
 ClientSampleId :  
 COAF3

Quant Method : Z:\voasrv\HPCHEM1\MSVOA\_V\Method\SFAMVTR092923WMA.M  
 Quant Title : TRACE VOA SFAM1.0

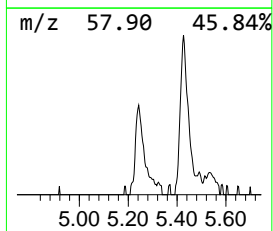
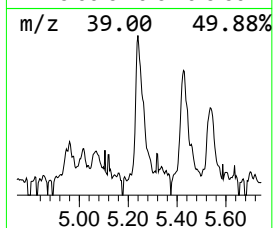
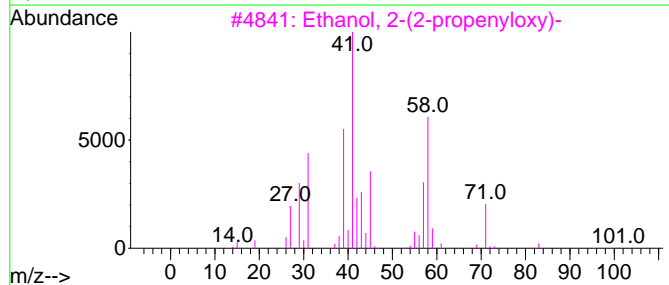
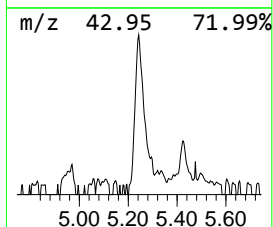
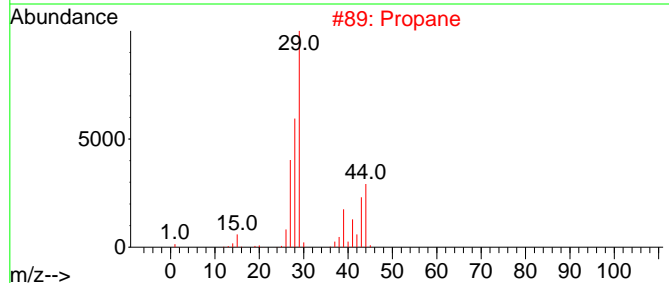
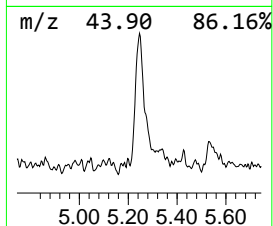
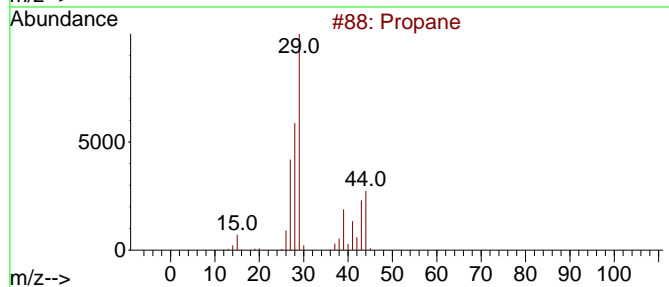
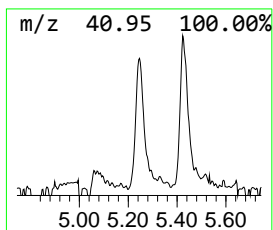
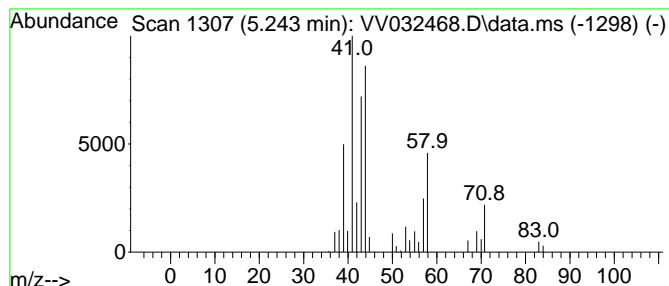
TIC Library : C:\Database\NIST20.L  
 TIC Integration Parameters: LSCINT.P

\*\*\*\*\*  
 Peak Number 4 (DEL) Alkane: Straight-Chai... Concentration Rank 7

R.T.	EstConc	Area	Relative to ISTD	R.T.
5.243	0.53 ug/L	25267	1,4-Difluorobenzene	5.539

Hit#	of 5	Tentative ID	MW	MolForm	CAS#	Qual
1		Propane	44	C3H8	000074-98-6	43
2		Propane	44	C3H8	000074-98-6	38
3		Ethanol, 2-(2-propenyloxy)-	102	C5H10O2	000111-45-5	32
4		Methacrolein	70	C4H6O	000078-85-3	17
5		2-Butenal, (E)-	70	C4H6O	000123-73-9	14



Data Path : Z:\voasrv\HPCHEM1\MSVOA\_V\Data\VV101823\  
 Data File : VV032468.D  
 Acq On : 18 Oct 2023 13:55  
 Operator : SY/MD  
 Sample : 04903-10  
 Misc : 25.0mL/MSVOA\_V/WATER  
 ALS Vial : 12 Sample Multiplier: 1

Instrument :  
 MSVOA\_V  
 ClientSampleId :  
 C0AF3

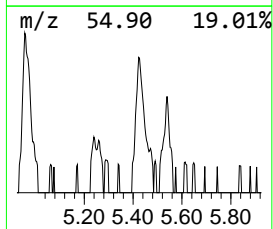
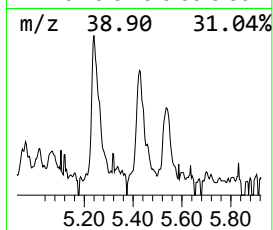
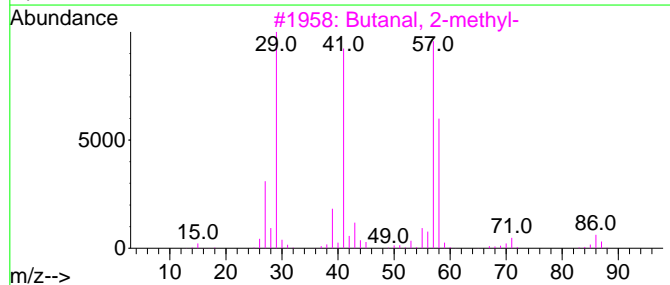
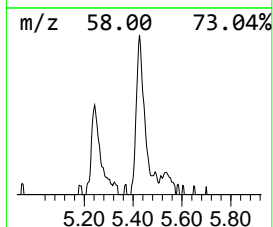
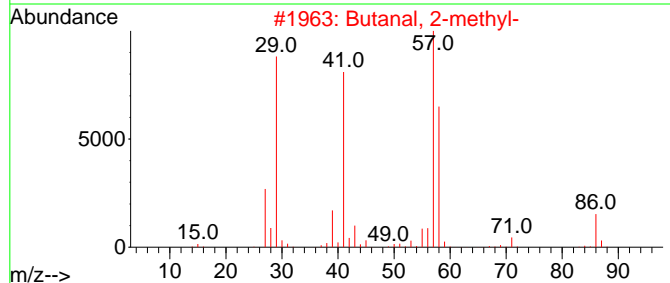
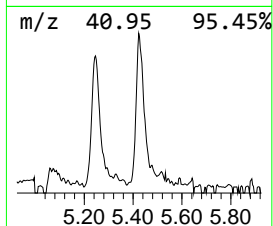
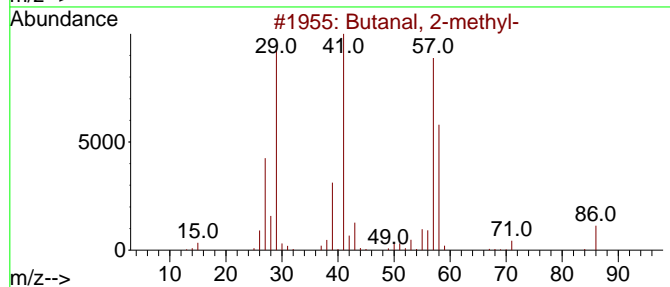
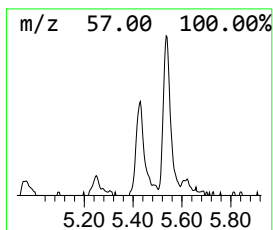
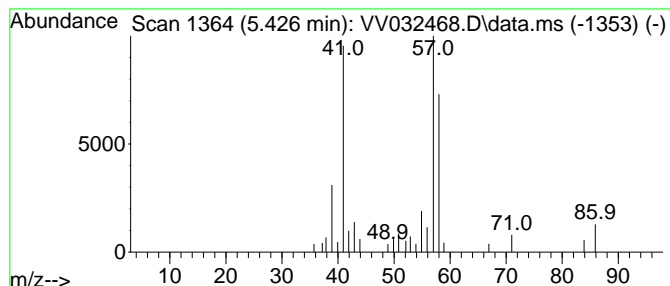
Quant Method : Z:\voasrv\HPCHEM1\MSVOA\_V\Method\SFAMVTR092923WMA.M  
 Quant Title : TRACE VOA SFAM1.0

TIC Library : C:\Database\NIST20.L  
 TIC Integration Parameters: LSCINT.P

\*\*\*\*\*  
 Peak Number 5 Butanal, 2-methyl- Concentration Rank 6

R.T.	EstConc	Area	Relative to ISTD	R.T.
5.426	0.54 ug/L	25937	1,4-Difluorobenzene	5.539

Hit#	of 5	Tentative ID	MW	MolForm	CAS#	Qual
1		Butanal, 2-methyl-	86	C5H10O	000096-17-3	87
2		Butanal, 2-methyl-	86	C5H10O	000096-17-3	80
3		Butanal, 2-methyl-	86	C5H10O	000096-17-3	80
4		Allyl ethyl ether	86	C5H10O	000557-31-3	47
5		Butane, 1-(2-propenyloxy)-	114	C7H14O	003739-64-8	42



Data Path : Z:\voasrv\HPCHEM1\MSVOA\_V\Data\VV101823\  
 Data File : VV032468.D  
 Acq On : 18 Oct 2023 13:55  
 Operator : SY/MD  
 Sample : 04903-10  
 Misc : 25.0mL/MSVOA\_V/WATER  
 ALS Vial : 12 Sample Multiplier: 1

Instrument :  
 MSVOA\_V  
 ClientSampleId :  
 C0AF3

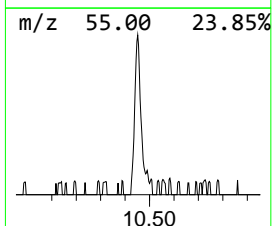
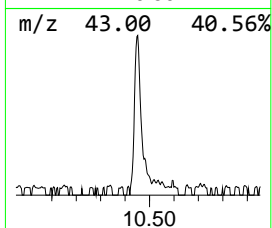
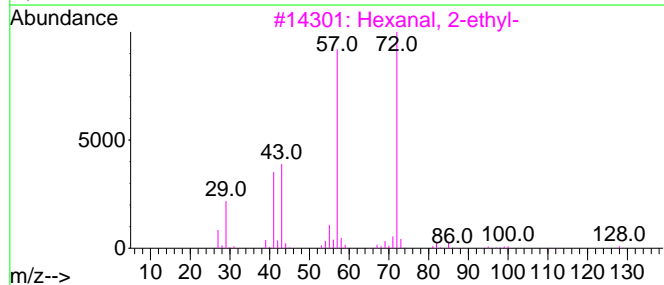
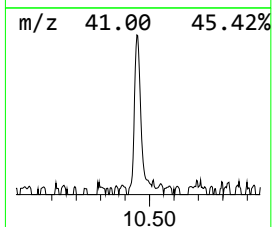
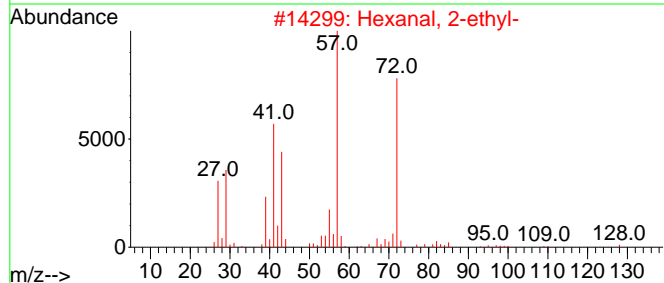
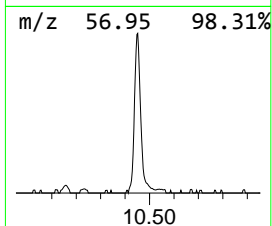
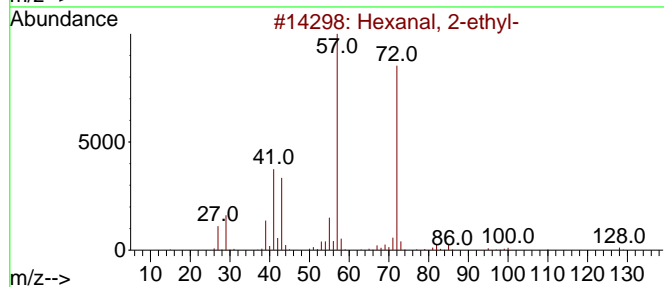
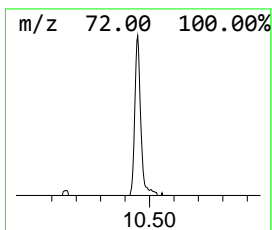
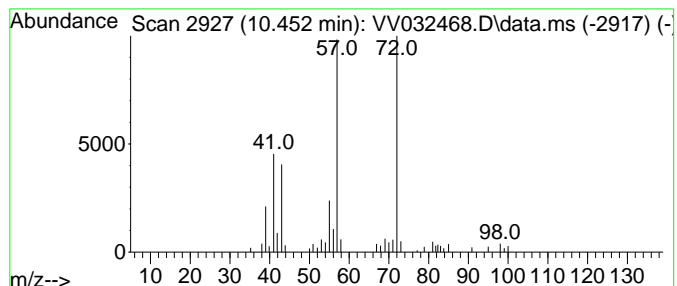
Quant Method : Z:\voasrv\HPCHEM1\MSVOA\_V\Method\SFAMVTR092923WMA.M  
 Quant Title : TRACE VOA SFAM1.0

TIC Library : C:\Database\NIST20.L  
 TIC Integration Parameters: LSCINT.P

\*\*\*\*\*  
 Peak Number 7 Hexanal, 2-ethyl- Concentration Rank 4

R.T.	EstConc	Area	Relative to ISTD	R.T.
10.452	0.75 ug/L	45927	1,4-Dichlorobenzene-d4	11.188

Hit#	of	5	Tentative ID	MW	MolForm	CAS#	Qual
1			Hexanal, 2-ethyl-	128	C8H16O	000123-05-7	72
2			Hexanal, 2-ethyl-	128	C8H16O	000123-05-7	72
3			Hexanal, 2-ethyl-	128	C8H16O	000123-05-7	72
4			2-Propanone, hydrazone	72	C3H8N2	005281-20-9	56
5			Hexanal, 2-ethyl-	128	C8H16O	000123-05-7	56



Data Path : Z:\voasrv\HPCHEM1\MSVOA\_V\Data\VV101823\  
 Data File : VV032468.D  
 Acq On : 18 Oct 2023 13:55  
 Operator : SY/MD  
 Sample : 04903-10  
 Misc : 25.0mL/MSVOA\_V/WATER  
 ALS Vial : 12 Sample Multiplier: 1

Instrument :  
 MSVOA\_V  
 ClientSampleId :  
 C0AF3

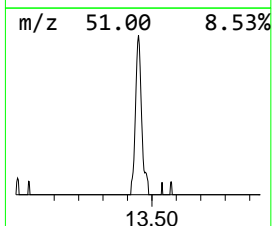
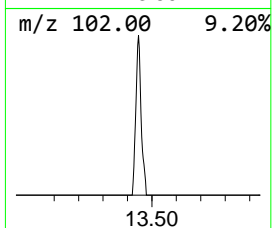
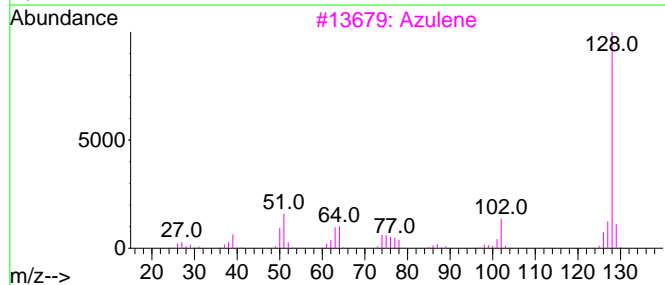
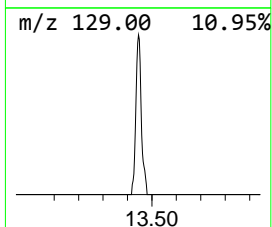
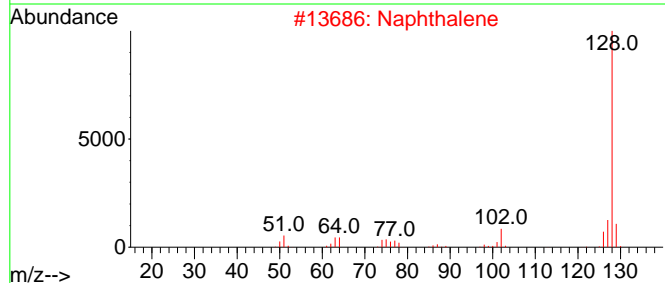
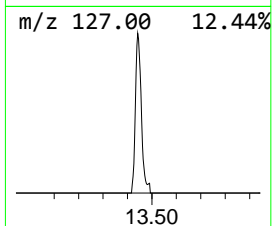
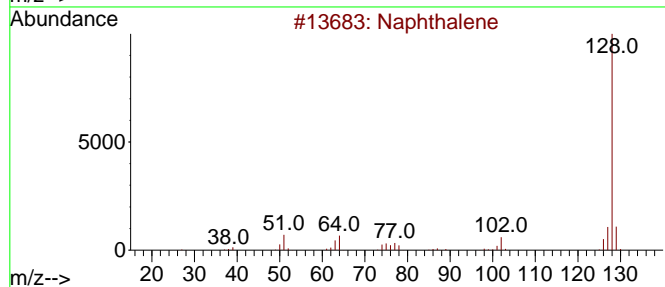
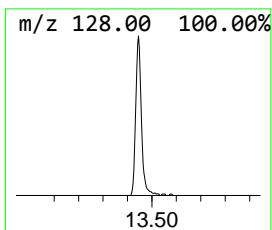
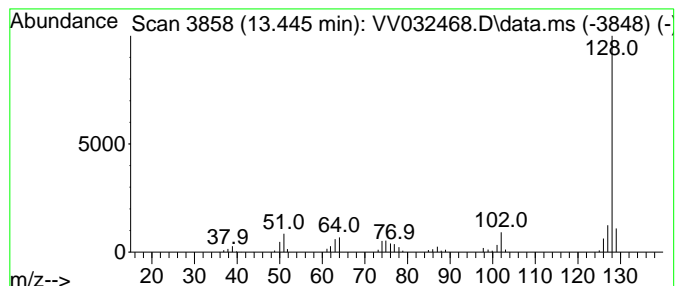
Quant Method : Z:\voasrv\HPCHEM1\MSVOA\_V\Method\SFAMVTR092923WMA.M  
 Quant Title : TRACE VOA SFAM1.0

TIC Library : C:\Database\NIST20.L  
 TIC Integration Parameters: LSCINT.P

\*\*\*\*\*  
 Peak Number 8 Azulene Concentration Rank 3

R.T.	EstConc	Area	Relative to ISTD	R.T.
13.445	0.85 ug/L	52187	1,4-Dichlorobenzene-d4	11.188

Hit#	of	5	Tentative ID	MW	MolForm	CAS#	Qual
1			Naphthalene	128	C10H8	000091-20-3	94
2			Naphthalene	128	C10H8	000091-20-3	94
3			Azulene	128	C10H8	000275-51-4	94
4			Naphthalene	128	C10H8	000091-20-3	93
5			Azulene	128	C10H8	000275-51-4	91





Data Path : Z:\voasrv\HPCHEM1\MSVOA\_V\Data\VV101823\  
Data File : VV032468.D  
Acq On : 18 Oct 2023 13:55  
Operator : SY/MD  
Sample : 04903-10  
Misc : 25.0mL/MSVOA\_V/WATER  
ALS Vial : 12 Sample Multiplier: 1

Instrument :  
MSVOA\_V  
ClientSampleId :  
C0AF3

Quant Method : Z:\voasrv\HPCHEM1\MSVOA\_V\Method\SFAMVTR092923WMA.M  
Quant Title : TRACE VOA SFAM1.0

TIC Library : C:\Database\NIST20.L  
TIC Integration Parameters: LSCINT.P

TIC Top Hit name	RT	EstConc	Units	Response	--Internal Standard--			
					#	RT	Resp	Conc
Propanal, 2-met...	2.886	0.6	ug/L	28326	1	5.539	238843	5.0
(DEL) Alkane: S...	5.243	0.5	ug/L	25267	1	5.539	238843	5.0
Butanal, 2-methyl-	5.426	0.5	ug/L	25937	1	5.539	238843	5.0
Hexanal, 2-ethyl-	10.452	0.8	ug/L	45927	3	11.188	306097	5.0
Azulene	13.445	0.8	ug/L	52187	3	11.188	306097	5.0