

Data Path : Z:\voasrv\HPCHEM1\MSVOA_V\Data\VW101923\
 Data File : VV032487.D
 Acq On : 19 Oct 2023 10:59
 Operator : SY/MD
 Sample : 04944-16
 Misc : 25.0mL/MSVOA_V/WATER
 ALS Vial : 5 Sample Multiplier: 1

Instrument :
 MSVOA_V
 ClientSampleId :
 A4AA0

Quant Time: Oct 20 06:20:17 2023
 Quant Method : Z:\voasrv\HPCHEM1\MSVOA_V\Method\SFAMVTR092923WMA.M
 Quant Title : TRACE VOA SFAM1.0
 QLast Update : Fri Oct 20 06:17:42 2023
 Response via : Initial Calibration

Compound	R.T.	QIon	Response	Conc	Units	Dev(Min)
Internal Standards						
1) 1,4-Difluorobenzene	5.535	114	102479	5.000	ug/L	0.00
28) Chlorobenzene-d5	8.786	117	111228	5.000	ug/L	0.00
58) 1,4-Dichlorobenzene-d4	11.188	152	57171	5.000	ug/L	0.00
System Monitoring Compounds						
4) Vinyl Chloride-d3	1.278	65	41156	4.938	ug/L	0.00
Spiked Amount	5.000	Range 40 - 130	Recovery	=	98.800%	
7) Chloroethane-d5	1.535	69	35097	5.188	ug/L	0.00
Spiked Amount	5.000	Range 65 - 130	Recovery	=	103.800%	
11) 1,1-Dichloroethene-d2	2.060	65	16846	4.793	ug/L	0.00
Spiked Amount	5.000	Range 60 - 125	Recovery	=	95.800%	
20) 2-Butanone-d5	3.805	46	96363	45.705	ug/L	0.00
Spiked Amount	50.000	Range 40 - 130	Recovery	=	91.420%	
24) Chloroform-d	4.252	84	75481	5.134	ug/L	0.00
Spiked Amount	5.000	Range 70 - 125	Recovery	=	102.600%	
26) 1,2-Dichloroethane-d4	4.944	65	36033	5.174	ug/L	0.00
Spiked Amount	5.000	Range 70 - 130	Recovery	=	103.400%	
32) Benzene-d6	4.963	84	137140	4.190	ug/L	0.00
Spiked Amount	5.000	Range 70 - 125	Recovery	=	83.800%	
36) 1,2-Dichloropropane-d6	5.989	67	47295	4.361	ug/L	0.00
Spiked Amount	5.000	Range 60 - 140	Recovery	=	87.200%	
41) Toluene-d8	7.243	98	131515	4.394	ug/L	0.00
Spiked Amount	5.000	Range 70 - 130	Recovery	=	87.800%	
43) trans-1,3-Dichloroprop...	7.558	79	16760	4.362	ug/L	0.00
Spiked Amount	5.000	Range 55 - 130	Recovery	=	87.200%	
46) 2-Hexanone-d5	8.027	63	80274	44.401	ug/L	0.00
Spiked Amount	50.000	Range 45 - 130	Recovery	=	88.800%	
56) 1,1,2,2-Tetrachloroeth...	10.156	84	34760	4.583	ug/L	0.00
Spiked Amount	5.000	Range 65 - 120	Recovery	=	91.600%	
66) 1,2-Dichlorobenzene-d4	11.564	152	44312	4.177	ug/L	0.00
Spiked Amount	5.000	Range 80 - 120	Recovery	=	83.600%	
Target Compounds						
2) Dichlorodifluoromethane	1.108	85	43311	3.793	ug/L	99
5) Vinyl chloride	1.285	62	49516	4.510	ug/L	100
8) Chloroethane	1.552	64	109121	16.508	ug/L	99
10) 1,1,2-Trichloro-1,2,2-...	2.069	101	99853	12.515	ug/L	100
12) 1,1-Dichloroethene	2.072	96	20034	2.666	ug/L	86
13) Acetone	2.137	43	448033	275.711	ug/L	95
15) Methyl Acetate	2.384	43	39887	10.903	ug/L	97
18) trans-1,2-Dichloroethene	2.696	96	25706	2.986	ug/L	97
19) 1,1-Dichloroethane	3.114	63	38597	2.383	ug/L	99
22) cis-1,2-Dichloroethene	3.818	96	40095	4.326	ug/L	93
23) Bromochloromethane	4.153	128	21922	5.622	ug/L	98
25) Chloroform	4.278	83	145864	9.180	ug/L	97
27) 1,2-Dichloroethane	5.050	62	22189	2.364	ug/L	96
29) 1,1,1-Trichloroethane	4.513	97	31829	2.105	ug/L	97
31) Carbon tetrachloride	4.735	117	40827	3.191	ug/L	98
34) Trichloroethene	5.834	95	24246	2.268	ug/L	95
39) cis-1,3-Dichloropropene	6.956	75	63220	4.242	ug/L	99
40) 4-Methyl-2-pentanone	7.159	43	418954	63.214	ug/L	97
44) trans-1,3-Dichloropropene	7.587	75	26273	2.145	ug/L	98

Data Path : Z:\voasrv\HPCHEM1\MSVOA_V\Data\VV101923\
 Data File : VV032487.D
 Acq On : 19 Oct 2023 10:59
 Operator : SY/MD
 Sample : 04944-16
 Misc : 25.0mL/MSVOA_V/WATER
 ALS Vial : 5 Sample Multiplier: 1

Instrument :
 MSVOA_V
 ClientSampleId :
 A4AA0

Quant Time: Oct 20 06:20:17 2023
 Quant Method : Z:\voasrv\HPCHEM1\MSVOA_V\Method\SFAMVTR092923WMA.M
 Quant Title : TRACE VOA SFAM1.0
 QLast Update : Fri Oct 20 06:17:42 2023
 Response via : Initial Calibration

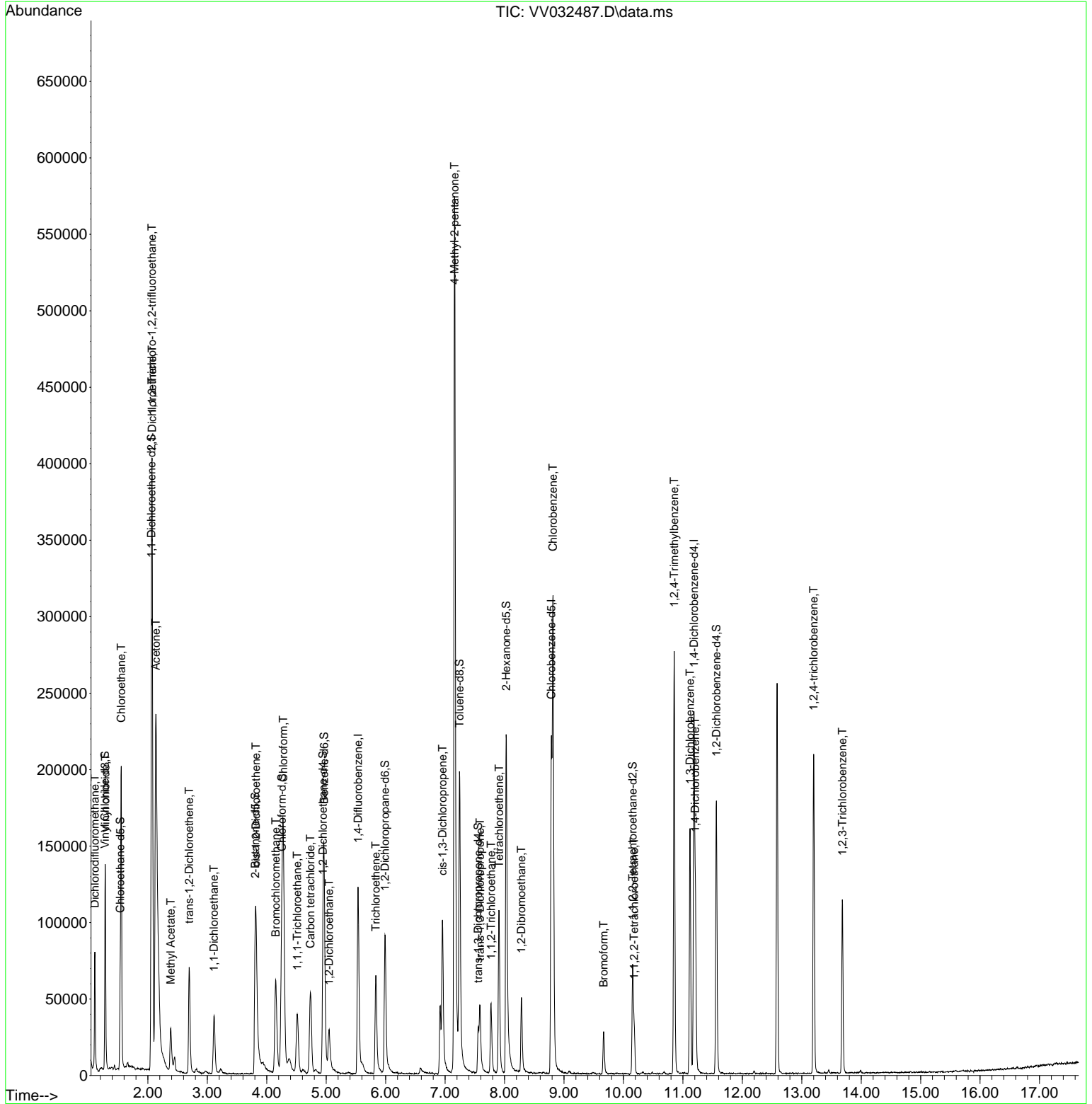
Compound	R.T.	QIon	Response	Conc	Units	Dev(Min)
45) 1,1,2-Trichloroethane	7.773	97	14528	1.966	ug/L	97
47) Tetrachloroethene	7.908	164	24353	3.004	ug/L	98
50) 1,2-Dibromoethane	8.284	107	32639	4.671	ug/L	100
51) Chlorobenzene	8.815	112	162148	6.033	ug/L	99
57) 1,1,2,2-Tetrachloroethane	10.181	83	13369	1.645	ug/L	98
59) Bromoform	9.667	173	12145	2.921	ug/L	99
63) 1,2,4-Trimethylbenzene	10.853	105	143992	3.994	ug/L	99
64) 1,3-Dichlorobenzene	11.120	146	61870	2.915	ug/L	99
65) 1,4-Dichlorobenzene	11.210	146	41809	1.963	ug/L	98
70) 1,2,4-trichlorobenzene	13.201	180	59288	4.300	ug/L	99
72) 1,2,3-Trichlorobenzene	13.683	180	32562	2.741	ug/L	96

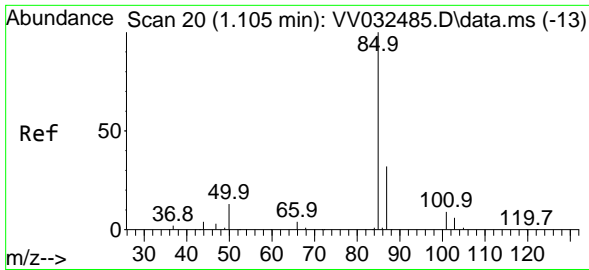
(#) = qualifier out of range (m) = manual integration (+) = signals summed

Data Path : Z:\voasrv\HPCHEM1\MSVOA_V\Data\VV101923\
 Data File : VV032487.D
 Acq On : 19 Oct 2023 10:59
 Operator : SY/MD
 Sample : 04944-16
 Misc : 25.0mL/MSVOA_V/WATER
 ALS Vial : 5 Sample Multiplier: 1

Instrument :
 MSVOA_V
 ClientSampleId :
 A4AA0

Quant Time: Oct 20 06:20:17 2023
 Quant Method : Z:\voasrv\HPCHEM1\MSVOA_V\Method\SFAMVTR092923WMA.M
 Quant Title : TRACE VOA SFAM1.0
 QLast Update : Fri Oct 20 06:17:42 2023
 Response via : Initial Calibration

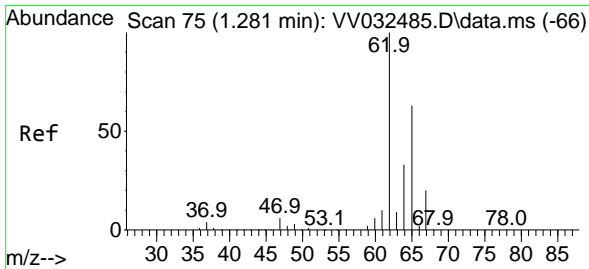
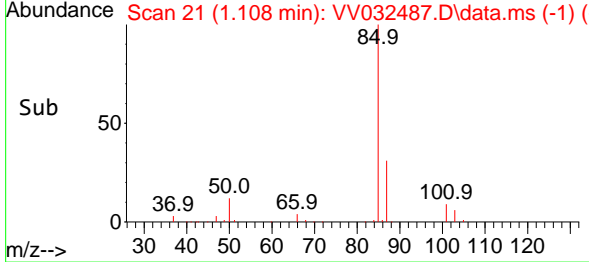
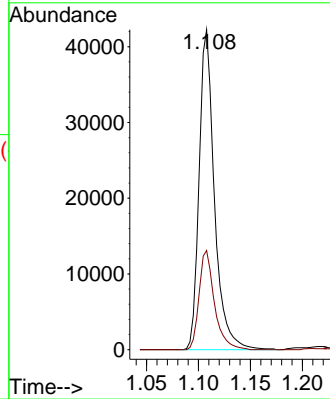
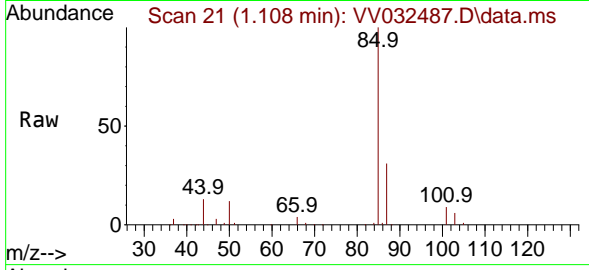




#2
 Dichlorodifluoromethane
 Concen: 3.793 ug/L
 RT: 1.108 min Scan# 21
 Delta R.T. 0.003 min
 Lab File: VV032487.D
 Acq: 19 Oct 2023 10:59

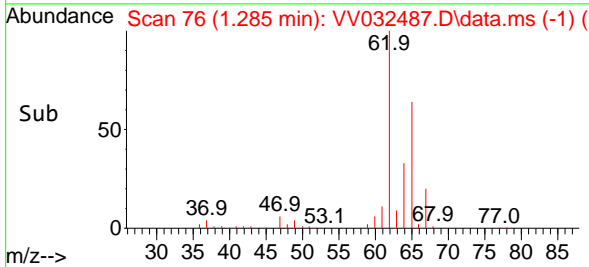
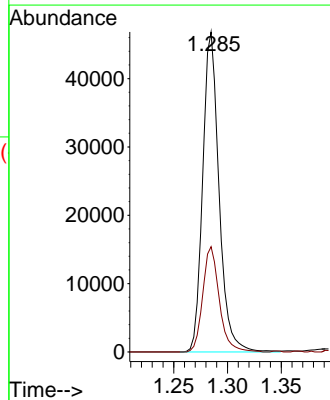
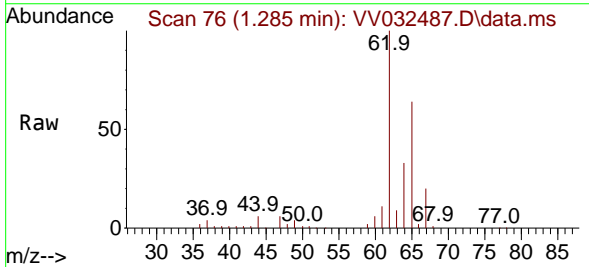
Instrument :
 MSVOA_V
 ClientSampleId :
 A4AA0

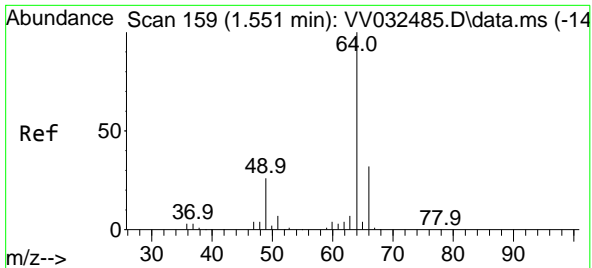
Tgt Ion: 85 Resp: 43311
 Ion Ratio Lower Upper
 85 100
 87 31.1 25.5 38.3



#5
 Vinyl chloride
 Concen: 4.510 ug/L
 RT: 1.285 min Scan# 76
 Delta R.T. 0.003 min
 Lab File: VV032487.D
 Acq: 19 Oct 2023 10:59

Tgt Ion: 62 Resp: 49516
 Ion Ratio Lower Upper
 62 100
 64 32.9 23.1 42.9

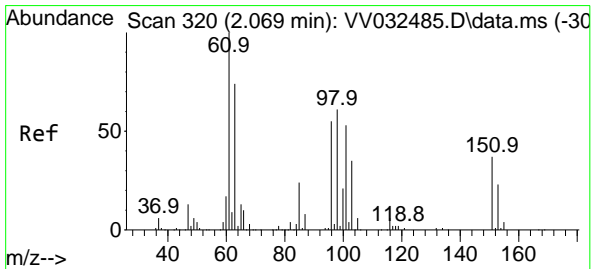
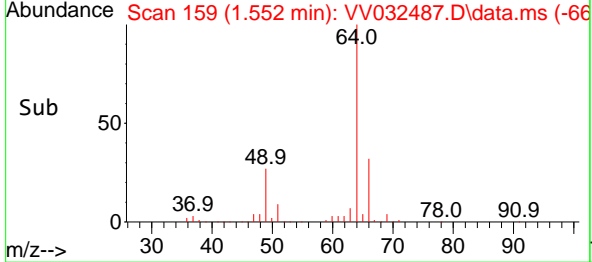
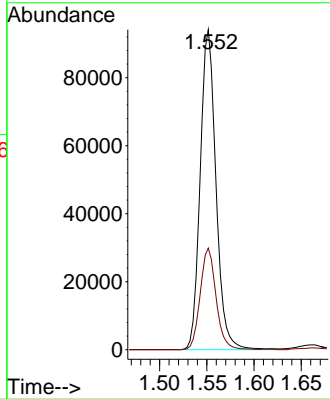
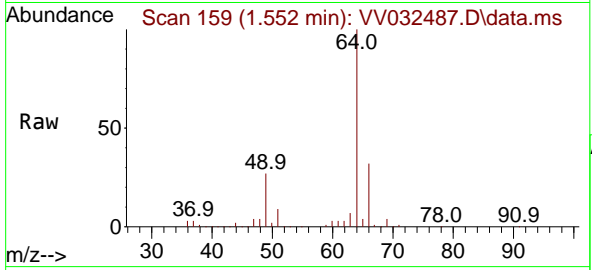




#8
 Chloroethane
 Concen: 16.508 ug/L
 RT: 1.552 min Scan# 11
 Delta R.T. 0.000 min
 Lab File: VV032487.D
 Acq: 19 Oct 2023 10:59

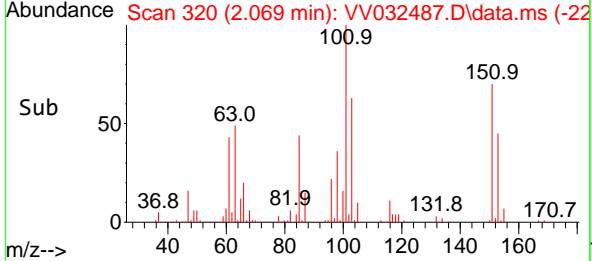
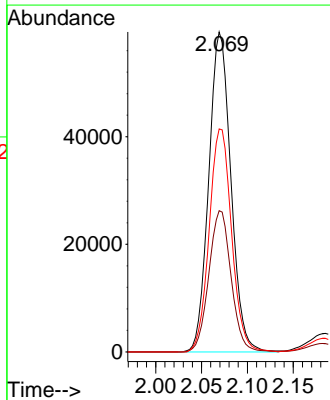
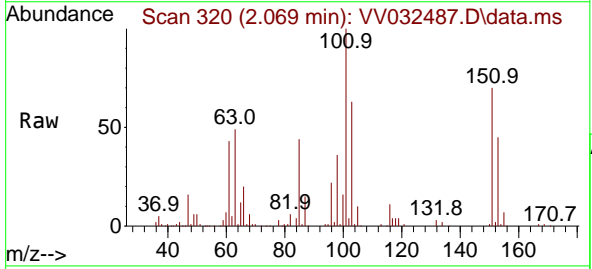
Instrument : MSVOA_V
 ClientSampleId : A4AA0

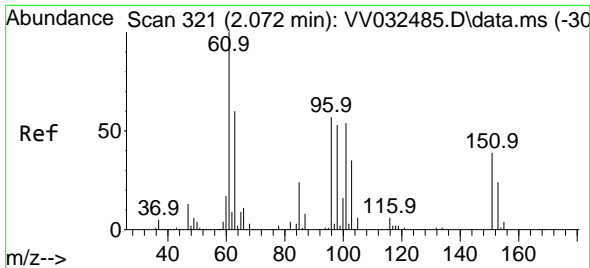
Tgt Ion: 64 Resp: 109121
 Ion Ratio Lower Upper
 64 100
 66 31.8 22.6 42.0



#10
 1,1,2-Trichloro-1,2,2-trifluoroethane
 Concen: 12.515 ug/L
 RT: 2.069 min Scan# 320
 Delta R.T. 0.000 min
 Lab File: VV032487.D
 Acq: 19 Oct 2023 10:59

Tgt Ion: 101 Resp: 99853
 Ion Ratio Lower Upper
 101 100
 85 44.5 35.0 52.6
 151 70.8 56.6 84.8

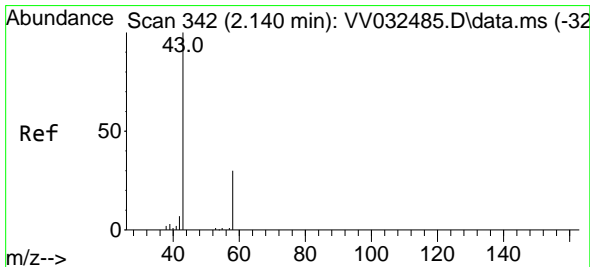
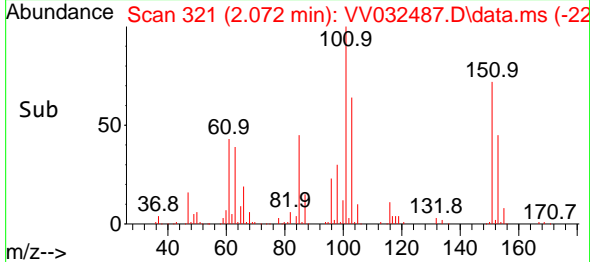
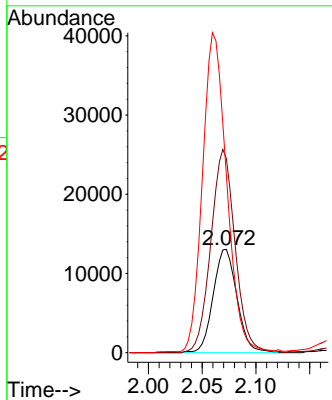
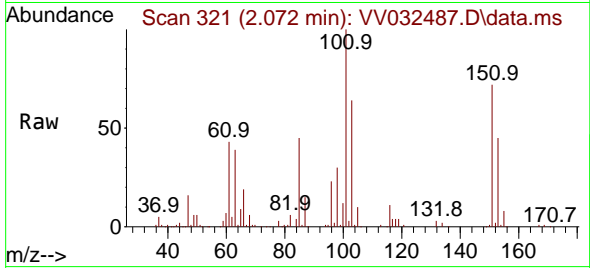




#12
 1,1-Dichloroethene
 Concen: 2.666 ug/L
 RT: 2.072 min Scan# 311
 Delta R.T. 0.000 min
 Lab File: VV032487.D
 Acq: 19 Oct 2023 10:59

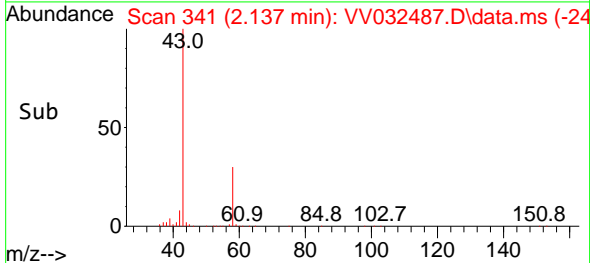
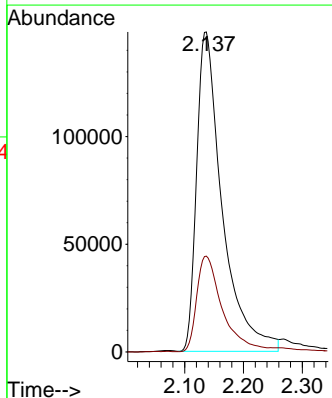
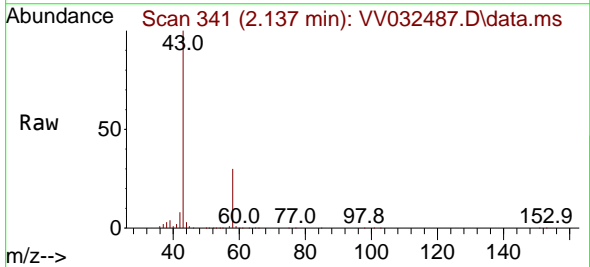
Instrument : MSVOA_V
 ClientSampleId : A4AA0

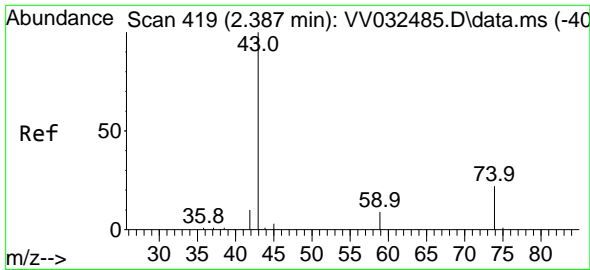
Tgt Ion	Resp	Lower	Upper
96	20034		
96	100		
61	188.1	127.3	236.3
63	172.2	98.3	182.7



#13
 Acetone
 Concen: 275.711 ug/L
 RT: 2.137 min Scan# 341
 Delta R.T. -0.003 min
 Lab File: VV032487.D
 Acq: 19 Oct 2023 10:59

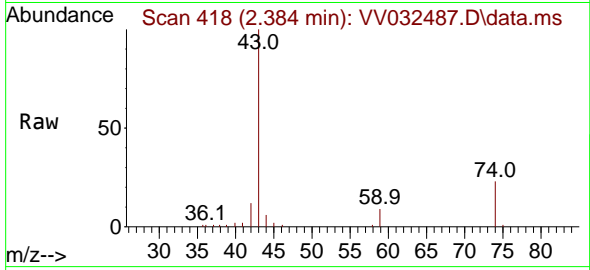
Tgt Ion	Resp	Lower	Upper
43	448033		
43	100		
58	30.0	0.0	66.0



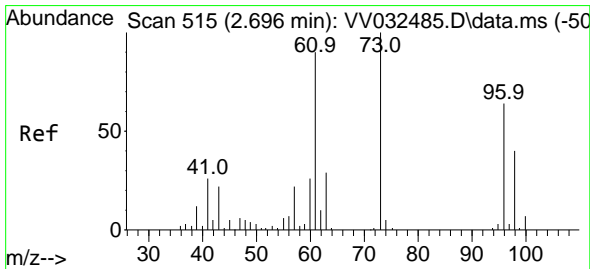
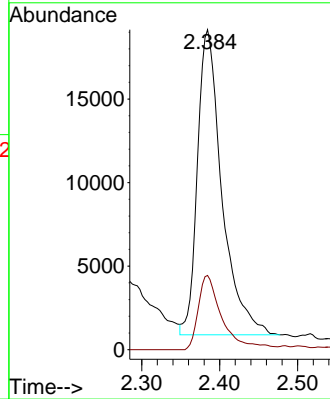
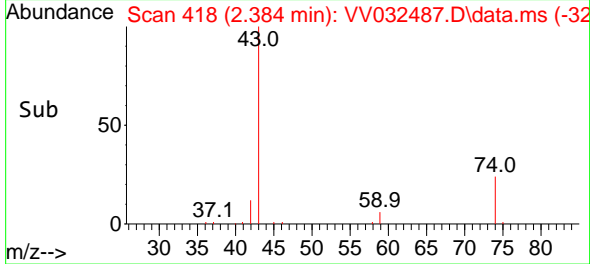


#15
 Methyl Acetate
 Concen: 10.903 ug/L
 RT: 2.384 min Scan# 418
 Delta R.T. -0.003 min
 Lab File: VV032487.D
 Acq: 19 Oct 2023 10:59

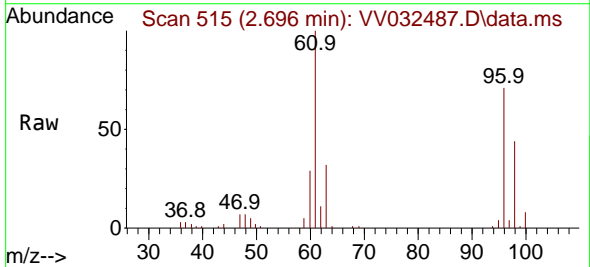
Instrument : MSVOA_V
 ClientSampleId : A4AA0



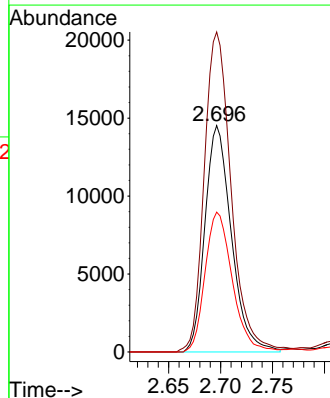
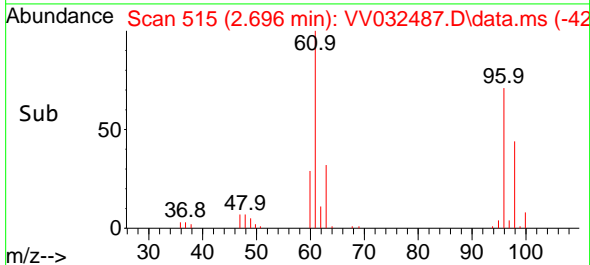
Tgt Ion: 43 Resp: 39887
 Ion Ratio Lower Upper
 43 100
 74 23.7 18.0 27.0

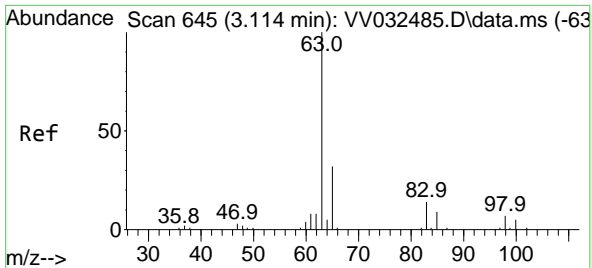


#18
 trans-1,2-Dichloroethene
 Concen: 2.986 ug/L
 RT: 2.696 min Scan# 515
 Delta R.T. 0.000 min
 Lab File: VV032487.D
 Acq: 19 Oct 2023 10:59



Tgt Ion: 96 Resp: 25706
 Ion Ratio Lower Upper
 96 100
 61 141.4 96.9 180.1
 98 61.8 45.3 84.1



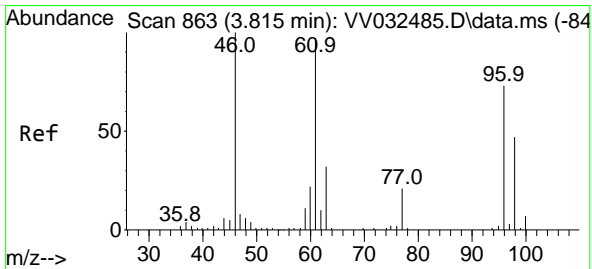
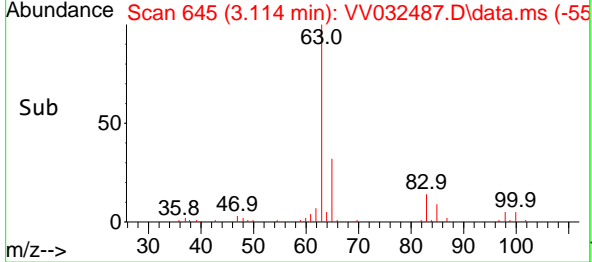
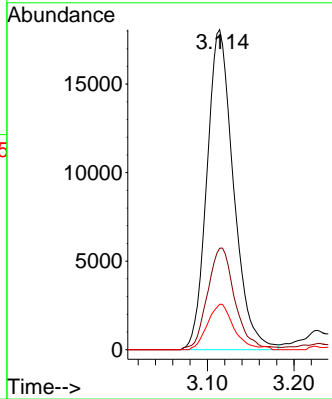
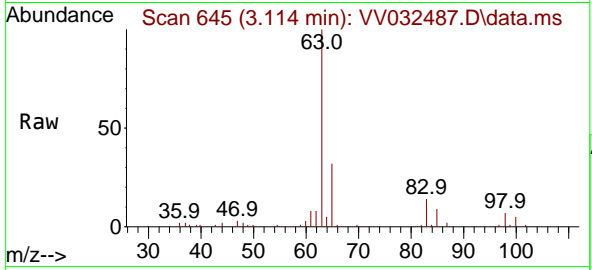


#19
 1,1-Dichloroethane
 Concen: 2.383 ug/L
 RT: 3.114 min Scan# 64
 Delta R.T. 0.000 min
 Lab File: VV032487.D
 Acq: 19 Oct 2023 10:59

Instrument : MSVOA_V
 ClientSampleId : A4AA0

Tgt Ion: 63 Resp: 38597

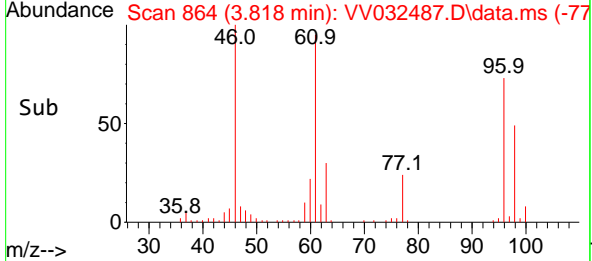
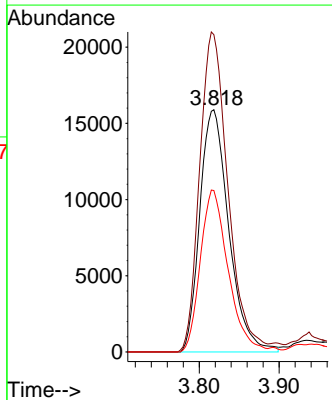
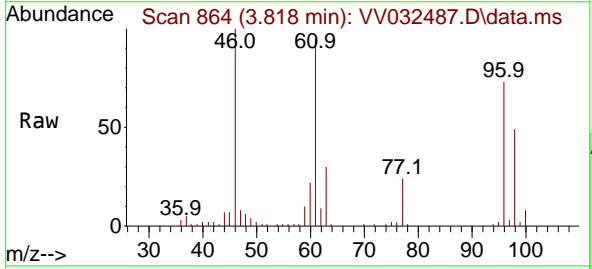
Ion	Ratio	Lower	Upper
63	100		
65	31.7	22.3	41.5
83	14.2	9.0	16.6

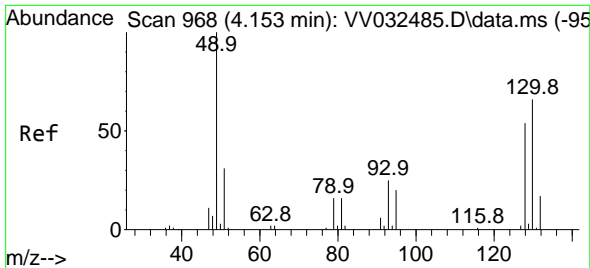


#22
 cis-1,2-Dichloroethene
 Concen: 4.326 ug/L
 RT: 3.818 min Scan# 864
 Delta R.T. 0.003 min
 Lab File: VV032487.D
 Acq: 19 Oct 2023 10:59

Tgt Ion: 96 Resp: 40095

Ion	Ratio	Lower	Upper
96	100		
61	131.0	85.8	159.4
98	66.7	44.0	81.6



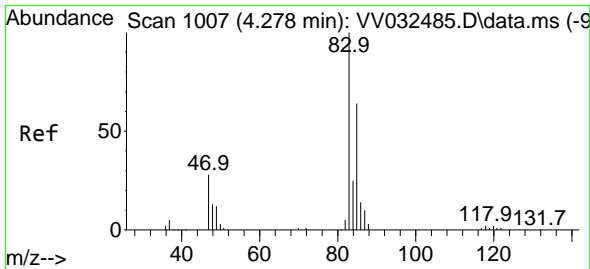
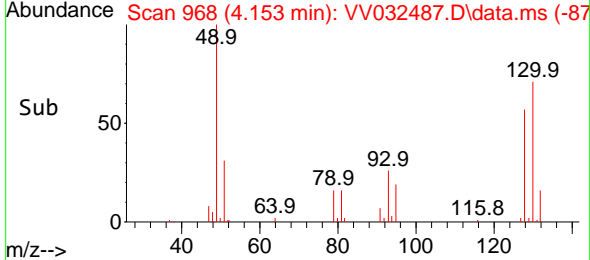
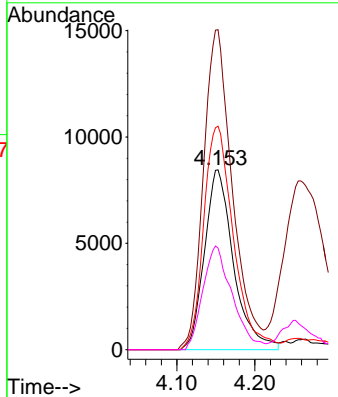
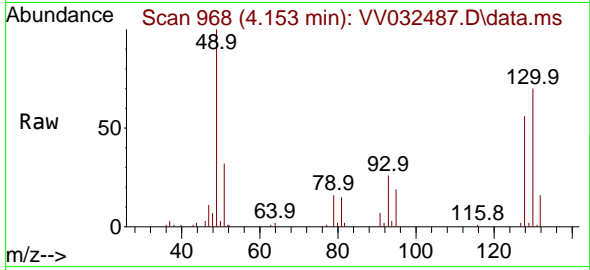


#23
 Bromochloromethane
 Concen: 5.622 ug/L
 RT: 4.153 min Scan# 968
 Delta R.T. 0.000 min
 Lab File: VV032487.D
 Acq: 19 Oct 2023 10:59

Instrument : MSVOA_V
 ClientSampleId : A4AA0

Tgt Ion:128 Resp: 21922

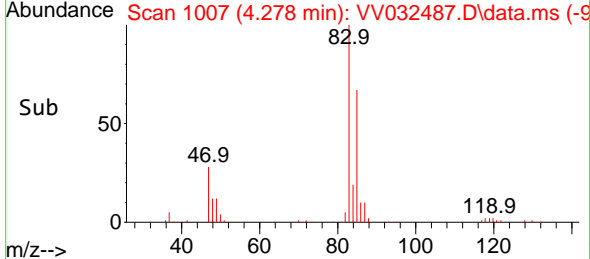
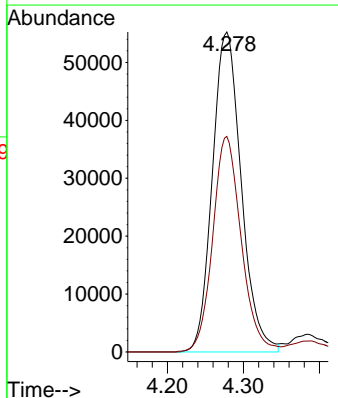
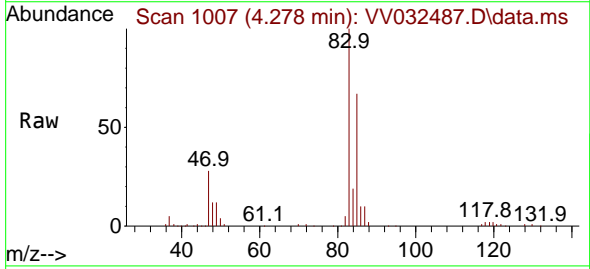
Ion	Ratio	Lower	Upper
128	100		
49	177.8	121.2	225.0
130	124.2	88.2	163.8
51	56.5	45.1	67.7

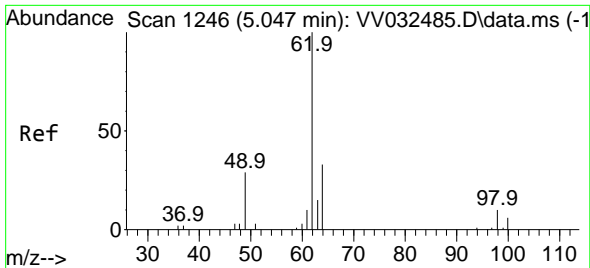


#25
 Chloroform
 Concen: 9.180 ug/L
 RT: 4.278 min Scan# 1007
 Delta R.T. 0.000 min
 Lab File: VV032487.D
 Acq: 19 Oct 2023 10:59

Tgt Ion: 83 Resp: 145864

Ion	Ratio	Lower	Upper
83	100		
85	67.4	45.4	84.4

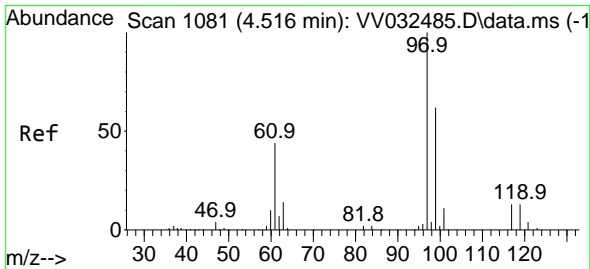
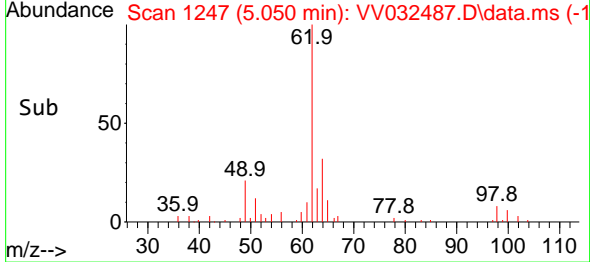
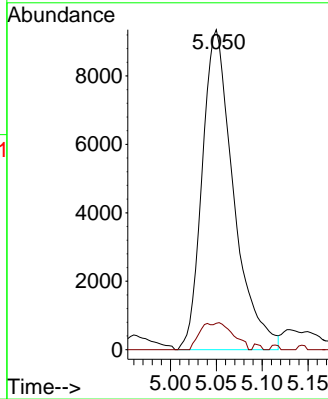
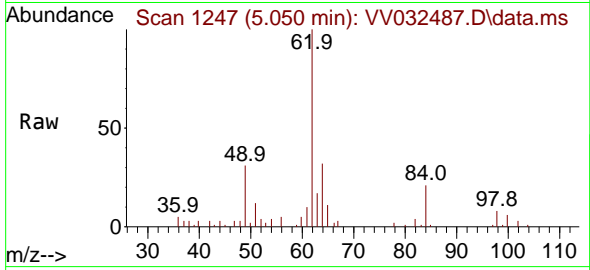




#27
 1,2-Dichloroethane
 Concen: 2.364 ug/L
 RT: 5.050 min Scan# 11
 Delta R.T. 0.003 min
 Lab File: VV032487.D
 Acq: 19 Oct 2023 10:59

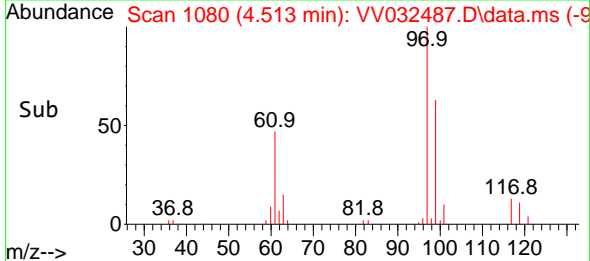
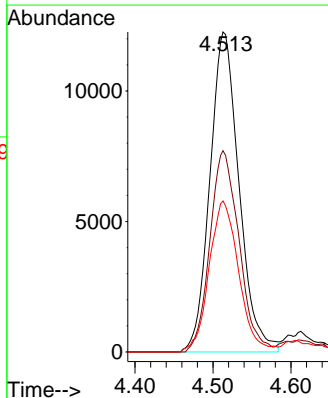
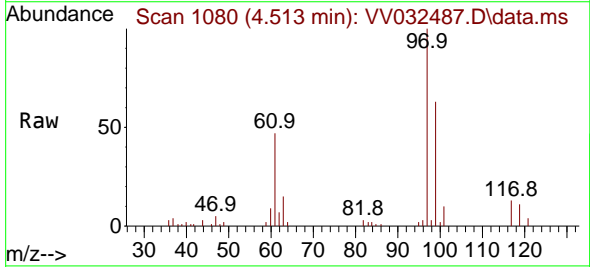
Instrument :
 MSVOA_V
 ClientSampleId :
 A4AA0

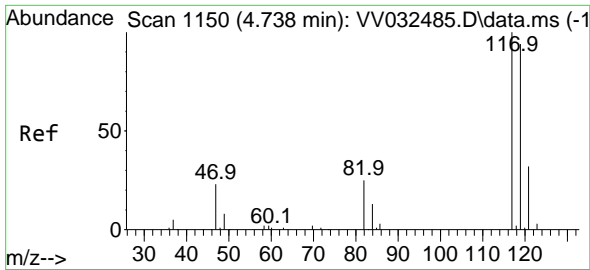
Tgt Ion: 62 Resp: 22189
 Ion Ratio Lower Upper
 62 100
 98 8.2 7.8 11.8



#29
 1,1,1-Trichloroethane
 Concen: 2.105 ug/L
 RT: 4.513 min Scan# 1080
 Delta R.T. -0.003 min
 Lab File: VV032487.D
 Acq: 19 Oct 2023 10:59

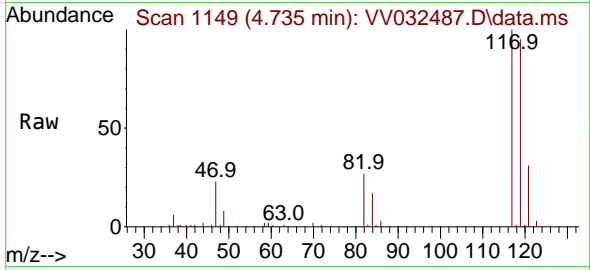
Tgt Ion: 97 Resp: 31829
 Ion Ratio Lower Upper
 97 100
 99 62.8 50.1 75.1
 61 48.0 35.1 52.7



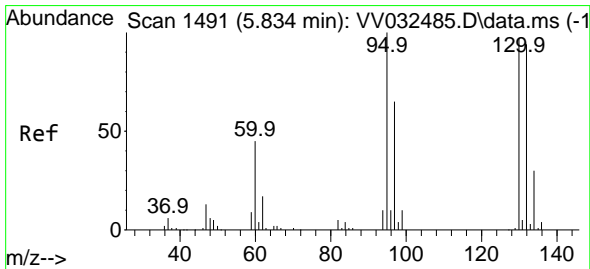
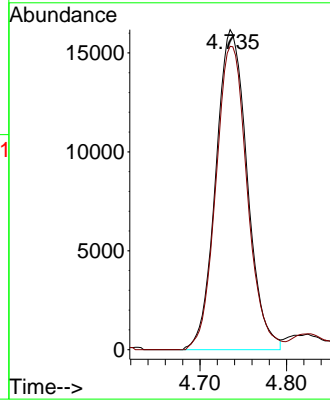
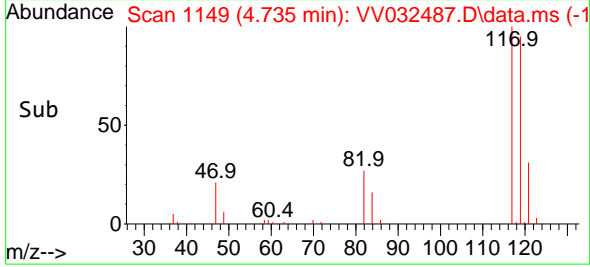


#31
 Carbon tetrachloride
 Concen: 3.191 ug/L
 RT: 4.735 min Scan# 1119
 Delta R.T. -0.003 min
 Lab File: VV032487.D
 Acq: 19 Oct 2023 10:59

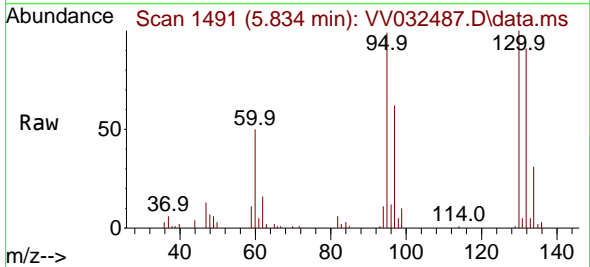
Instrument : MSVOA_V
 ClientSampleId : A4AA0



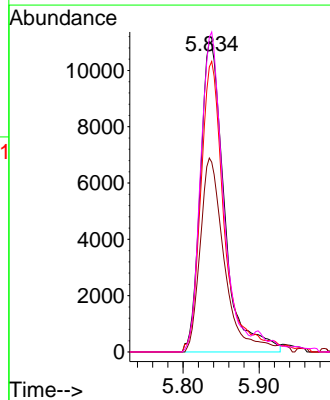
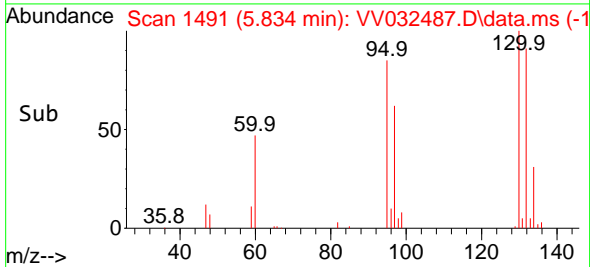
Tgt Ion: 117 Resp: 40827
 Ion Ratio Lower Upper
 117 100
 119 94.8 77.6 116.4

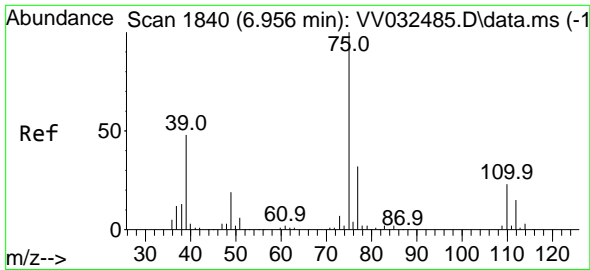


#34
 Trichloroethene
 Concen: 2.268 ug/L
 RT: 5.834 min Scan# 1491
 Delta R.T. 0.000 min
 Lab File: VV032487.D
 Acq: 19 Oct 2023 10:59



Tgt Ion: 95 Resp: 24246
 Ion Ratio Lower Upper
 95 100
 97 62.5 45.7 84.9
 132 91.8 70.3 130.5
 130 101.5 69.6 129.2

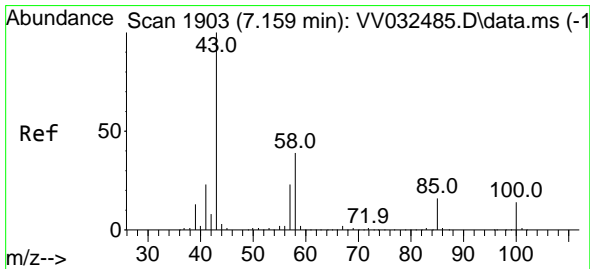
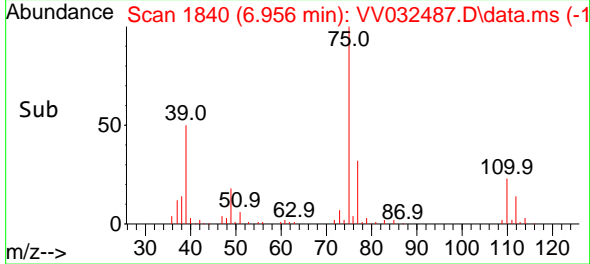
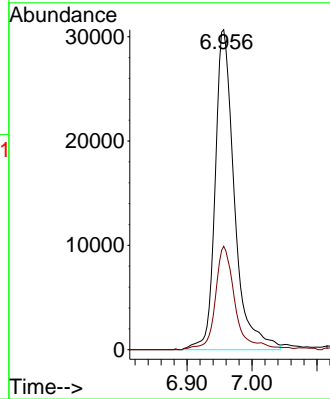
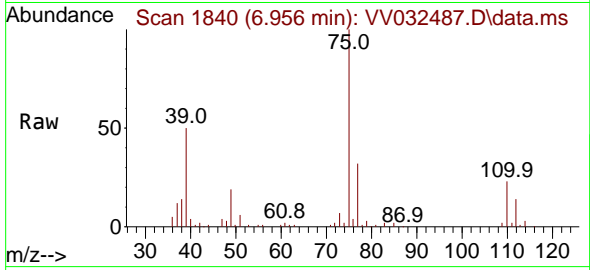




#39
 cis-1,3-Dichloropropene
 Concen: 4.242 ug/L
 RT: 6.956 min Scan# 1840
 Delta R.T. 0.000 min
 Lab File: VV032487.D
 Acq: 19 Oct 2023 10:59

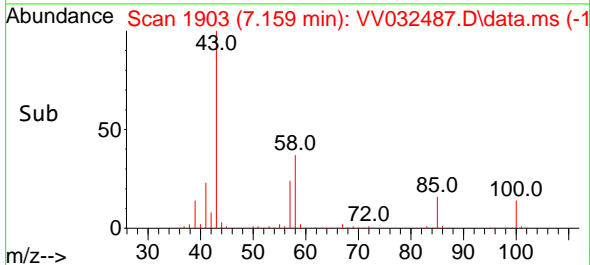
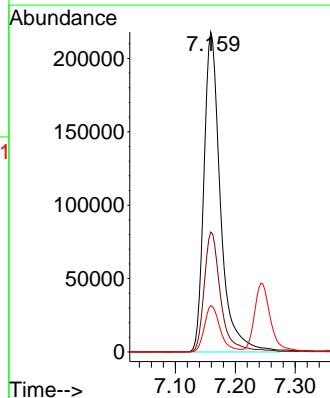
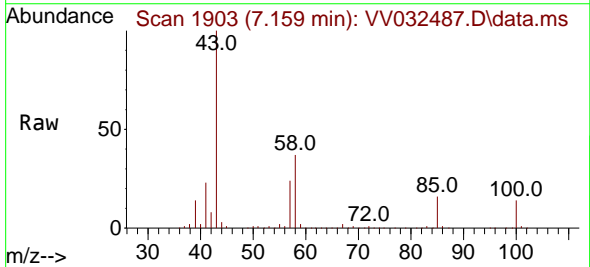
Instrument : MSVOA_V
 ClientSampleId : A4AA0

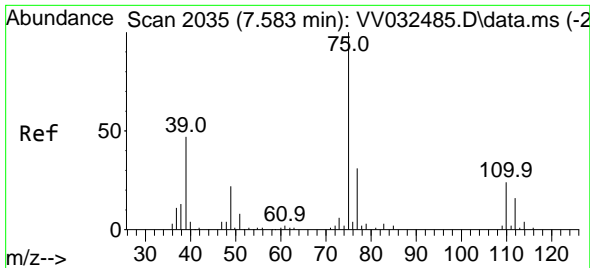
Tgt Ion: 75 Resp: 63220
 Ion Ratio Lower Upper
 75 100
 77 32.3 22.2 41.2



#40
 4-Methyl-2-pentanone
 Concen: 63.214 ug/L
 RT: 7.159 min Scan# 1903
 Delta R.T. 0.000 min
 Lab File: VV032487.D
 Acq: 19 Oct 2023 10:59

Tgt Ion: 43 Resp: 418954
 Ion Ratio Lower Upper
 43 100
 58 37.8 31.9 47.9
 100 13.8 11.3 16.9

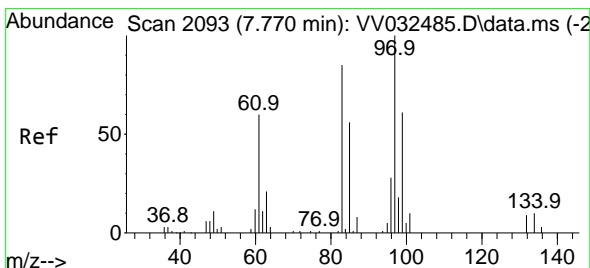
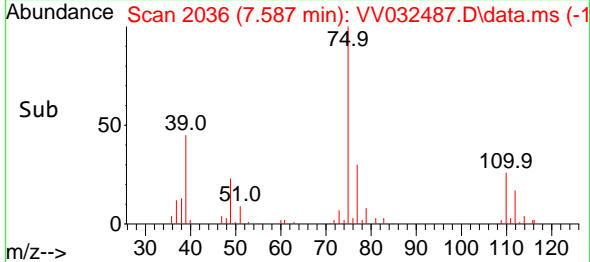
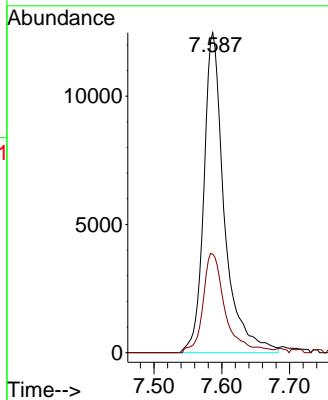
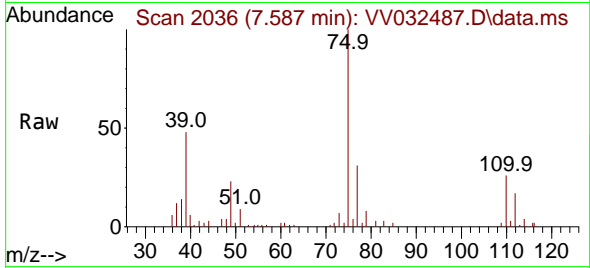




#44
 trans-1,3-Dichloropropene
 Concen: 2.145 ug/L
 RT: 7.587 min Scan# 2094
 Delta R.T. 0.003 min
 Lab File: VV032487.D
 Acq: 19 Oct 2023 10:59

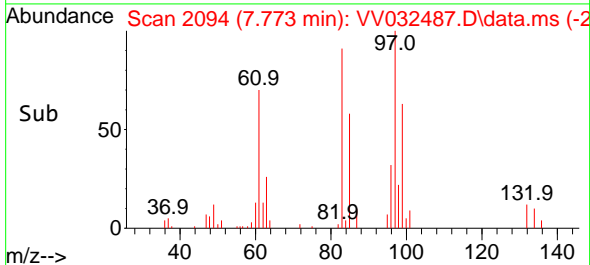
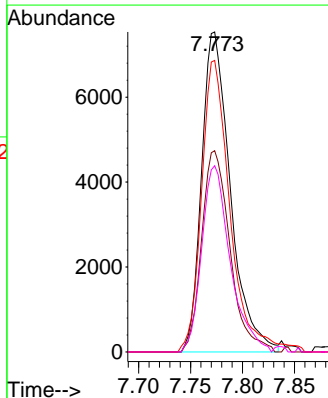
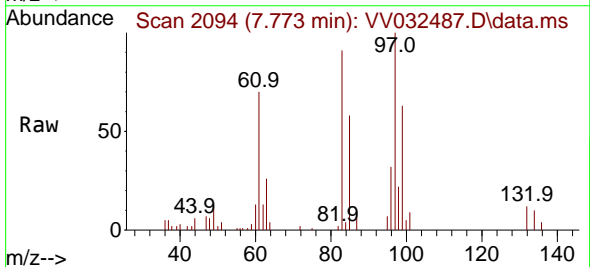
Instrument : MSVOA_V
 ClientSampleId : A4AA0

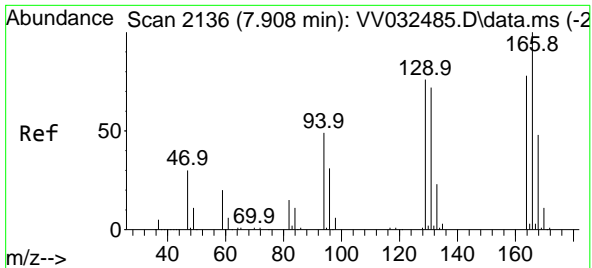
Tgt Ion: 75 Resp: 26273
 Ion Ratio Lower Upper
 75 100
 77 30.8 22.5 41.7



#45
 1,1,2-Trichloroethane
 Concen: 1.966 ug/L
 RT: 7.773 min Scan# 2094
 Delta R.T. 0.003 min
 Lab File: VV032487.D
 Acq: 19 Oct 2023 10:59

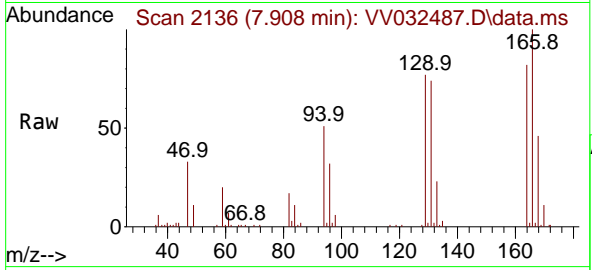
Tgt Ion: 97 Resp: 14528
 Ion Ratio Lower Upper
 97 100
 99 62.9 42.8 79.4
 83 91.1 60.9 113.1
 85 58.2 39.4 73.2





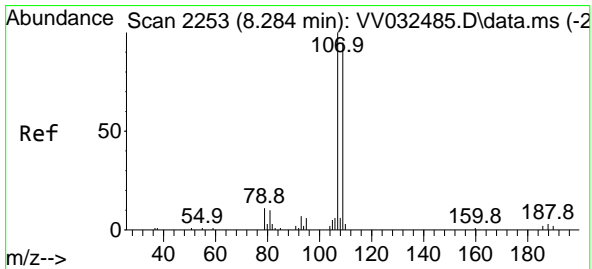
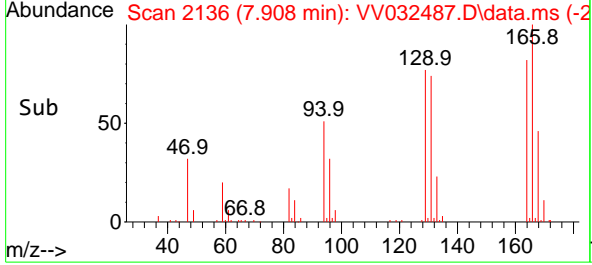
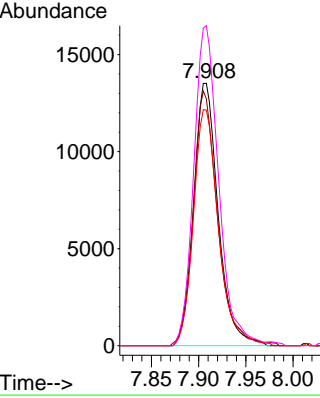
#47
 Tetrachloroethene
 Concen: 3.004 ug/L
 RT: 7.908 min Scan# 2136
 Delta R.T. 0.000 min
 Lab File: VV032487.D
 Acq: 19 Oct 2023 10:59

Instrument : MSVOA_V
 ClientSampleId : A4AA0

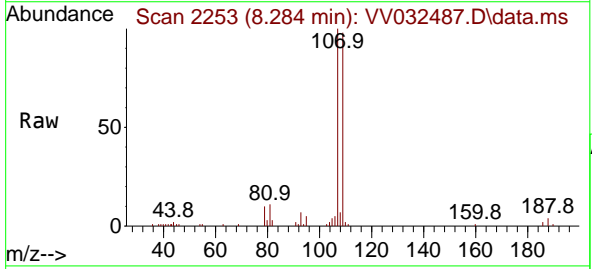


Tgt Ion:164 Resp: 24353

Ion	Ratio	Lower	Upper
164	100		
129	94.1	66.4	123.4
131	89.8	63.7	118.3
166	122.0	87.9	163.3

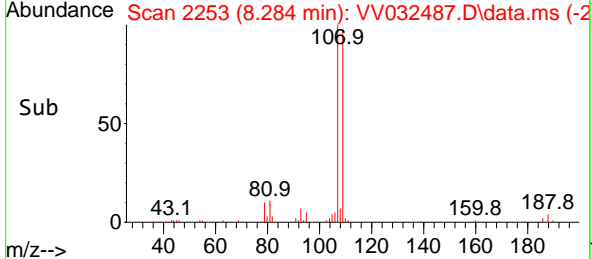
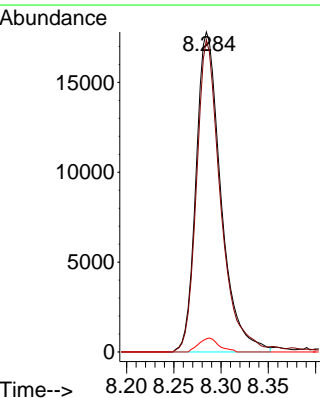


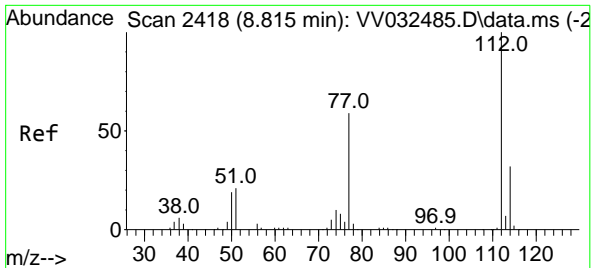
#50
 1,2-Dibromoethane
 Concen: 4.671 ug/L
 RT: 8.284 min Scan# 2253
 Delta R.T. 0.000 min
 Lab File: VV032487.D
 Acq: 19 Oct 2023 10:59



Tgt Ion:107 Resp: 32639

Ion	Ratio	Lower	Upper
107	100		
109	97.5	68.4	127.0
188	4.1	3.2	4.8

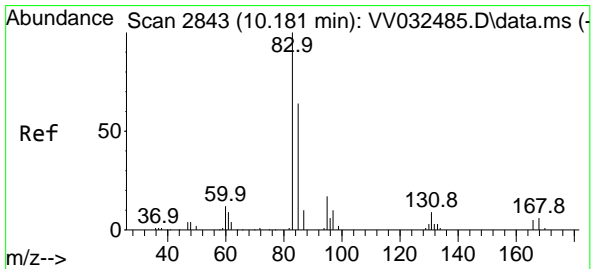
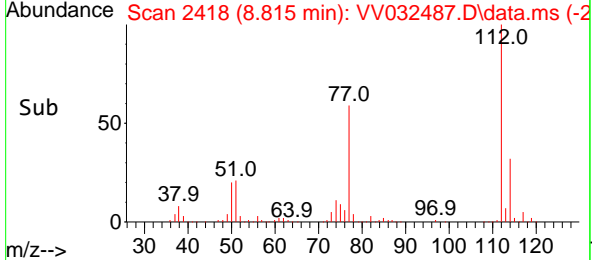
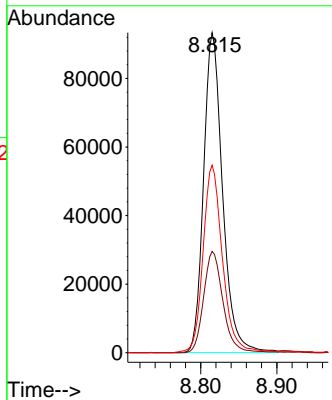
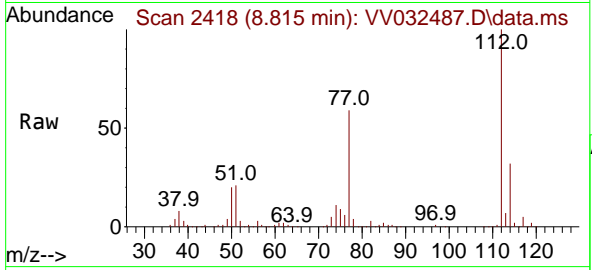




#51
 Chlorobenzene
 Concen: 6.033 ug/L
 RT: 8.815 min Scan# 2418
 Delta R.T. 0.000 min
 Lab File: VV032487.D
 Acq: 19 Oct 2023 10:59

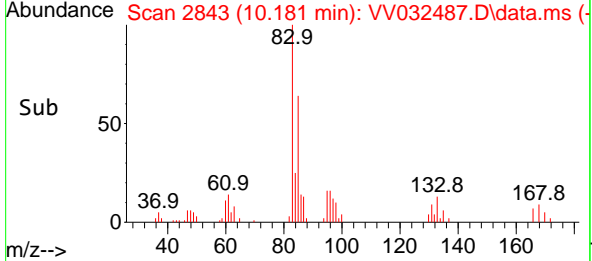
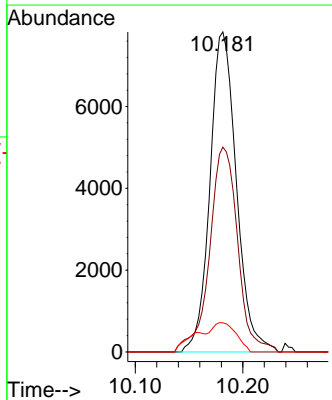
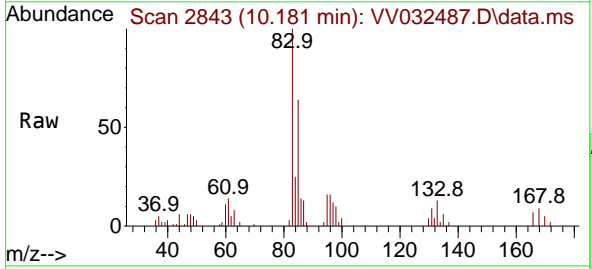
Instrument : MSVOA_V
 ClientSampleId : A4AA0

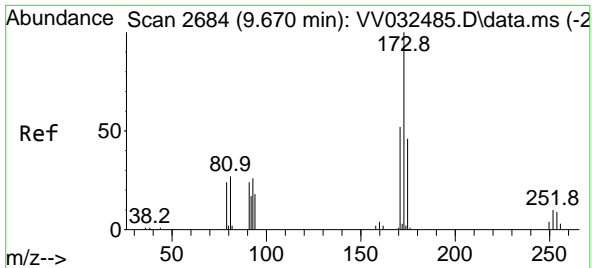
Tgt Ion	Resp	Lower	Upper
112	162148		
112	100		
114	31.7	22.1	41.1
77	58.5	46.1	69.1



#57
 1,1,2,2-Tetrachloroethane
 Concen: 1.645 ug/L
 RT: 10.181 min Scan# 2843
 Delta R.T. 0.000 min
 Lab File: VV032487.D
 Acq: 19 Oct 2023 10:59

Tgt Ion	Resp	Lower	Upper
83	13369		
83	100		
85	64.0	43.6	81.0
131	9.1	7.0	10.6

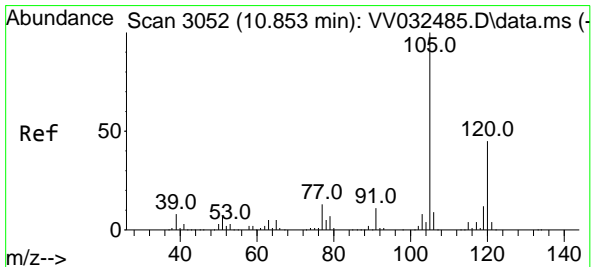
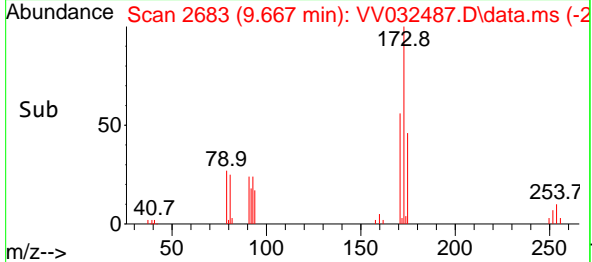
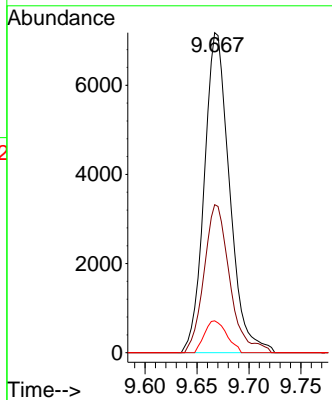
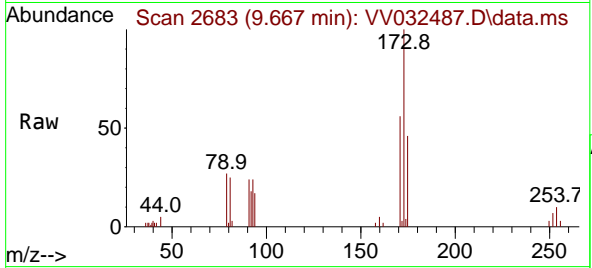




#59
 Bromoform
 Concen: 2.921 ug/L
 RT: 9.667 min Scan# 20
 Delta R.T. -0.003 min
 Lab File: VV032487.D
 Acq: 19 Oct 2023 10:59

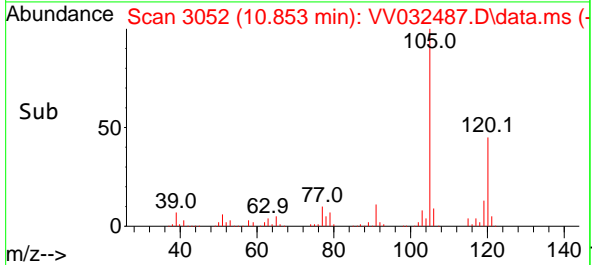
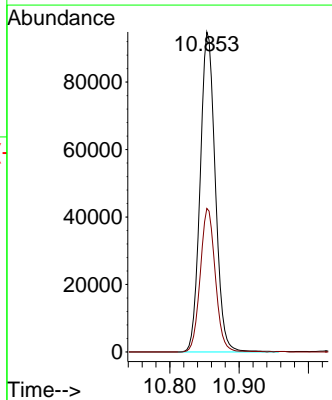
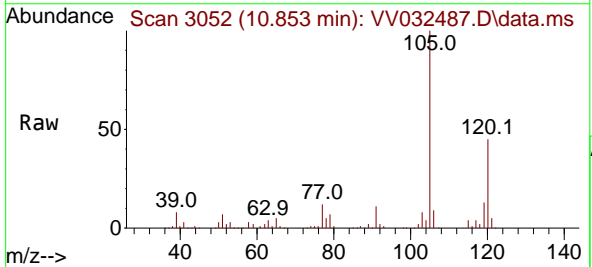
Instrument : MSVOA_V
 ClientSampleId : A4AA0

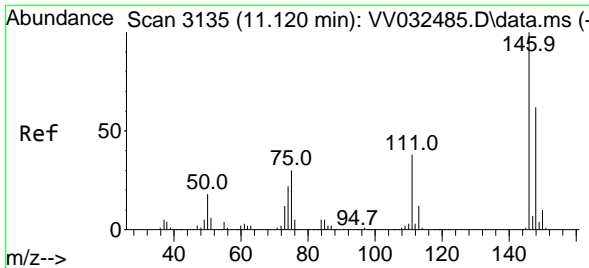
Tgt Ion	Resp	Lower	Upper
173	12145		
175	47.1	38.2	57.2
254	8.7	7.0	10.4



#63
 1,2,4-Trimethylbenzene
 Concen: 3.994 ug/L
 RT: 10.853 min Scan# 3052
 Delta R.T. 0.000 min
 Lab File: VV032487.D
 Acq: 19 Oct 2023 10:59

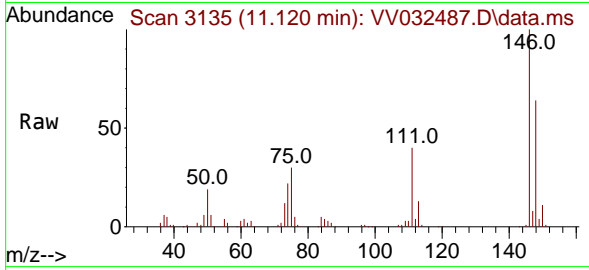
Tgt Ion	Resp	Lower	Upper
105	143992		
105	100		
120	44.7	36.2	54.4



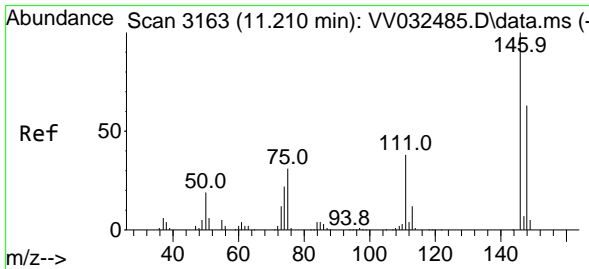
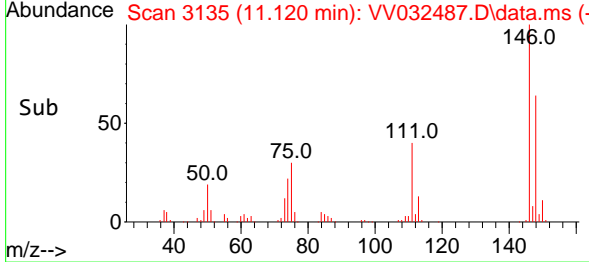
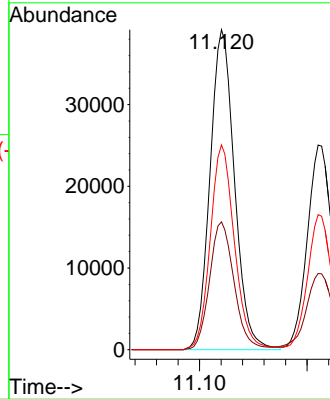


#64
 1,3-Dichlorobenzene
 Concen: 2.915 ug/L
 RT: 11.120 min Scan# 3135
 Delta R.T. 0.000 min
 Lab File: VV032487.D
 Acq: 19 Oct 2023 10:59

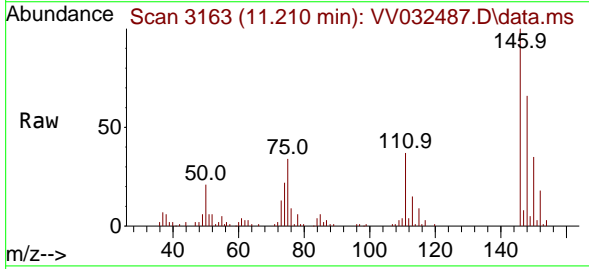
Instrument : MSVOA_V
 ClientSampleId : A4AA0



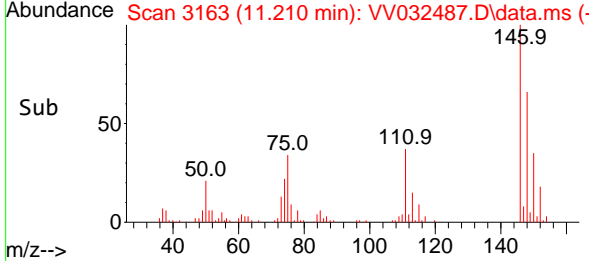
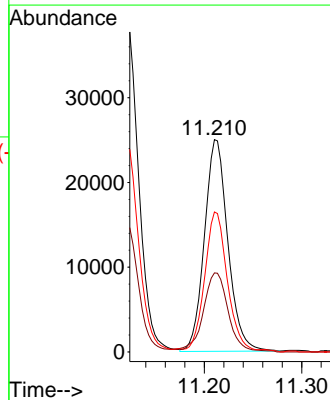
Tgt Ion:146 Resp: 61870
 Ion Ratio Lower Upper
 146 100
 111 39.9 27.8 51.6
 148 64.0 43.7 81.1

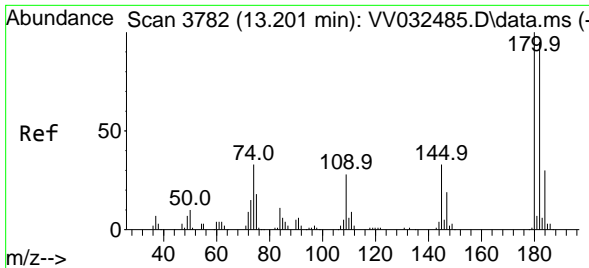


#65
 1,4-Dichlorobenzene
 Concen: 1.963 ug/L
 RT: 11.210 min Scan# 3163
 Delta R.T. 0.000 min
 Lab File: VV032487.D
 Acq: 19 Oct 2023 10:59



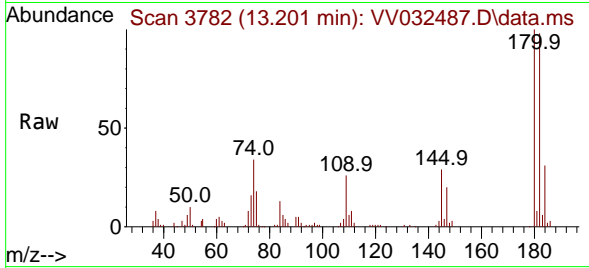
Tgt Ion:146 Resp: 41809
 Ion Ratio Lower Upper
 146 100
 111 37.2 26.9 49.9
 148 66.0 44.8 83.2



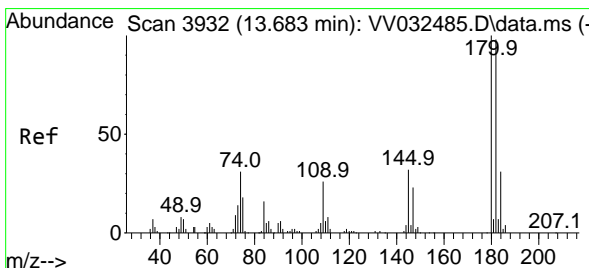
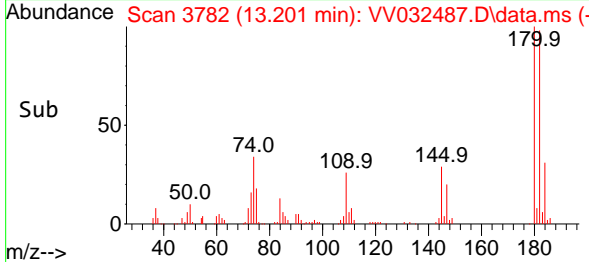
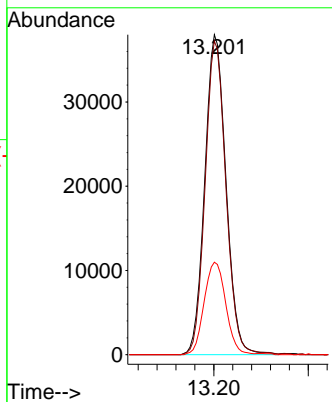


#70
 1,2,4-trichlorobenzene
 Concen: 4.300 ug/L
 RT: 13.201 min Scan# 31
 Delta R.T. 0.000 min
 Lab File: VV032487.D
 Acq: 19 Oct 2023 10:59

Instrument :
 MSVOA_V
 ClientSampleId :
 A4AA0



Tgt Ion:180 Resp: 59288
 Ion Ratio Lower Upper
 180 100
 182 95.8 76.5 114.7
 145 29.4 24.3 36.5



#72
 1,2,3-Trichlorobenzene
 Concen: 2.741 ug/L
 RT: 13.683 min Scan# 3932
 Delta R.T. 0.000 min
 Lab File: VV032487.D
 Acq: 19 Oct 2023 10:59

Tgt Ion:180 Resp: 32562
 Ion Ratio Lower Upper
 180 100
 182 91.3 77.0 115.4
 145 31.5 25.7 38.5

