

Data Path : Z:\voasrv\HPCHEM1\MSVOA\_V\Data\VV102023\  
 Data File : VV032524.D  
 Acq On : 20 Oct 2023 15:06  
 Operator : SY/MD  
 Sample : 04950-14  
 Misc : 25.0mL/MSVOA\_V/WATER  
 ALS Vial : 17 Sample Multiplier: 1

Instrument :  
 MSVOA\_V  
 ClientSampleId :  
 A49E5

Integration Parameters: rteint.p

Integrator: RTE

Smoothing : ON

Filtering: 5

Sampling : 1

Min Area: 3 % of largest Peak

Start Thrs : 0.1

Max Peaks: 100

Stop Thrs : 0

Peak Location: TOP

If leading or trailing edge < 100 prefer < Baseline drop else tangent >

Peak separation: 5

Method : Z:\voasrv\HPCHEM1\MSVOA\_V\Method\SFAMVTR092923WMA.M

Title : TRACE VOA SFAM1.0

Signal : TIC: VV032524.D\data.ms

peak #	R.T. min	first scan	max scan	last scan	PK TY	peak height	corr. area	corr. % max.	% of total
1	1.114	17	23	33	rVB2	5559	9030	2.22%	0.300%
2	1.217	50	55	65	rBV	11602	14368	3.53%	0.478%
3	1.282	67	75	90	rVV	47099	53853	13.23%	1.791%
4	1.391	104	109	118	rVB5	3338	4434	1.09%	0.147%
5	1.536	146	154	168	rBV	46182	55042	13.52%	1.831%
6	2.063	307	318	329	rBV	70089	102952	25.29%	3.424%
7	2.182	348	355	365	rVB4	7395	13269	3.26%	0.441%
8	3.802	849	859	891	rBV	50109	162300	39.87%	5.398%
9	4.259	984	1001	1022	rBV	52650	138327	33.98%	4.600%
10	4.365	1022	1034	1047	rVV4	5741	14453	3.55%	0.481%
11	4.963	1203	1220	1240	rBV3	122127	320215	78.67%	10.649%
12	5.539	1387	1399	1417	rBV	101118	216538	53.20%	7.201%
13	5.992	1528	1540	1555	rBV2	76020	163106	40.07%	5.424%
14	6.918	1816	1828	1847	rBV2	33653	69950	17.18%	2.326%
15	7.249	1920	1931	1950	rBV	127489	249151	61.21%	8.286%
16	7.561	2017	2028	2046	rBV	21012	42356	10.41%	1.409%
17	8.031	2164	2174	2205	rBV	192925	407056	100.00%	13.537%
18	8.789	2399	2410	2436	rBV	167081	298110	73.24%	9.914%
19	9.085	2493	2502	2506	rBV6	4236	6210	1.53%	0.207%
20	10.156	2825	2835	2852	rVB	64518	104401	25.65%	3.472%
21	10.323	2877	2887	2899	rVB6	3925	7368	1.81%	0.245%
22	11.188	3145	3156	3175	rBV	177491	281246	69.09%	9.353%
23	11.490	3237	3250	3263	rBV3	15035	35584	8.74%	1.183%
24	11.564	3263	3273	3289	rVB	148785	237575	58.36%	7.901%

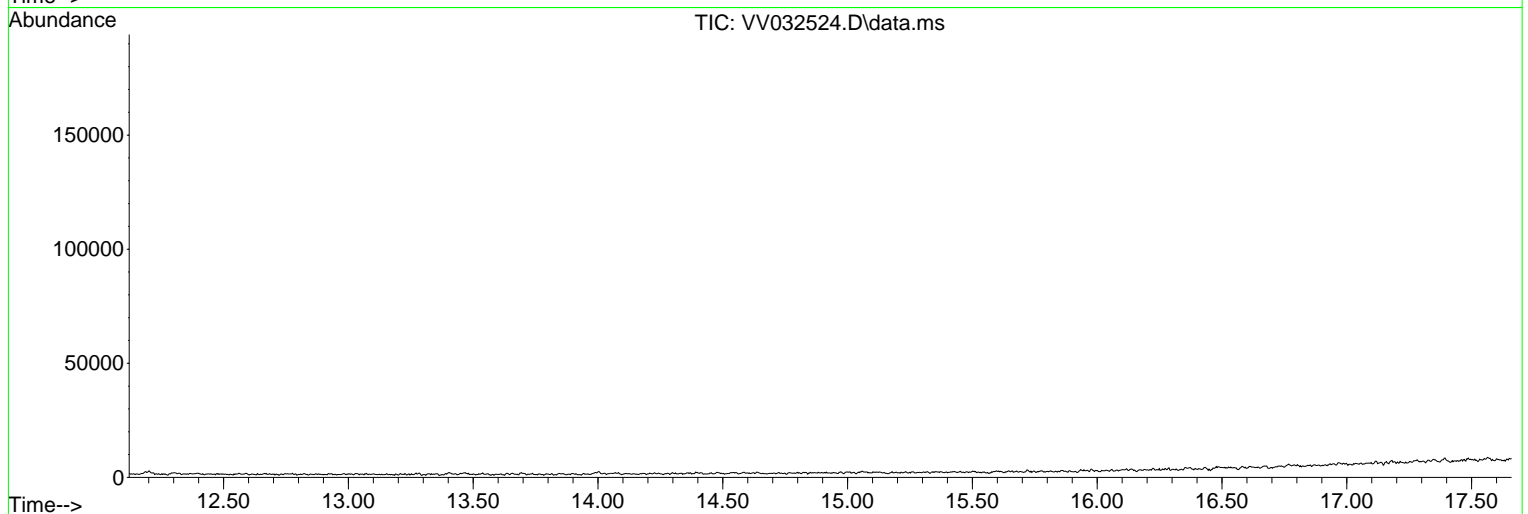
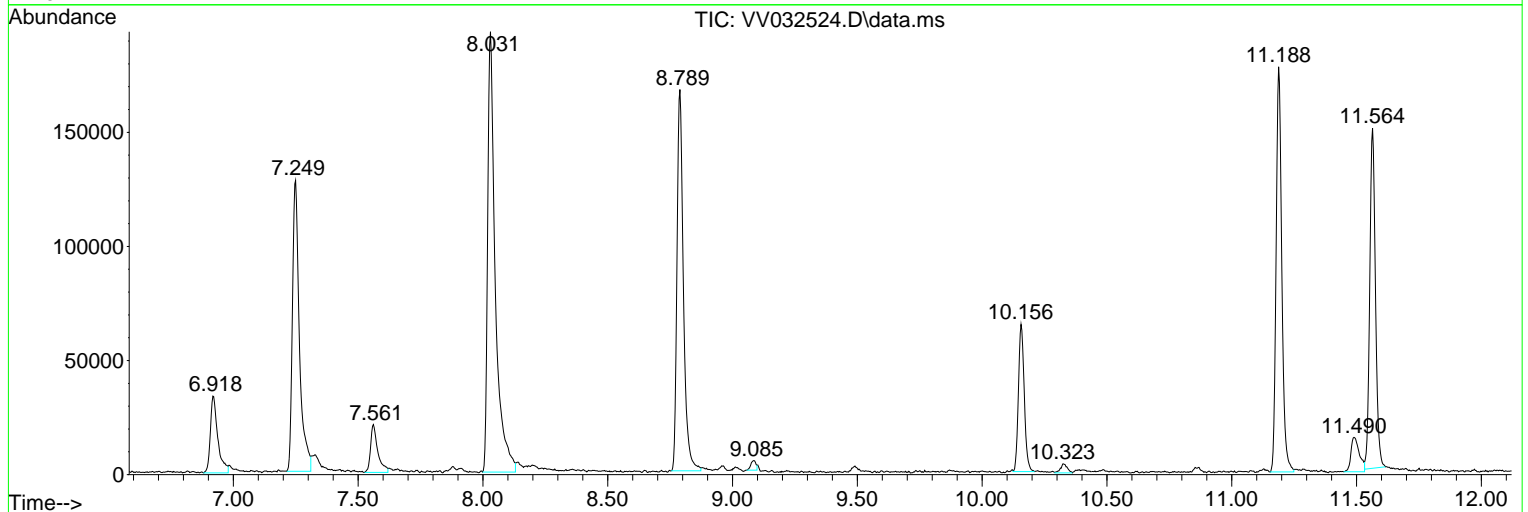
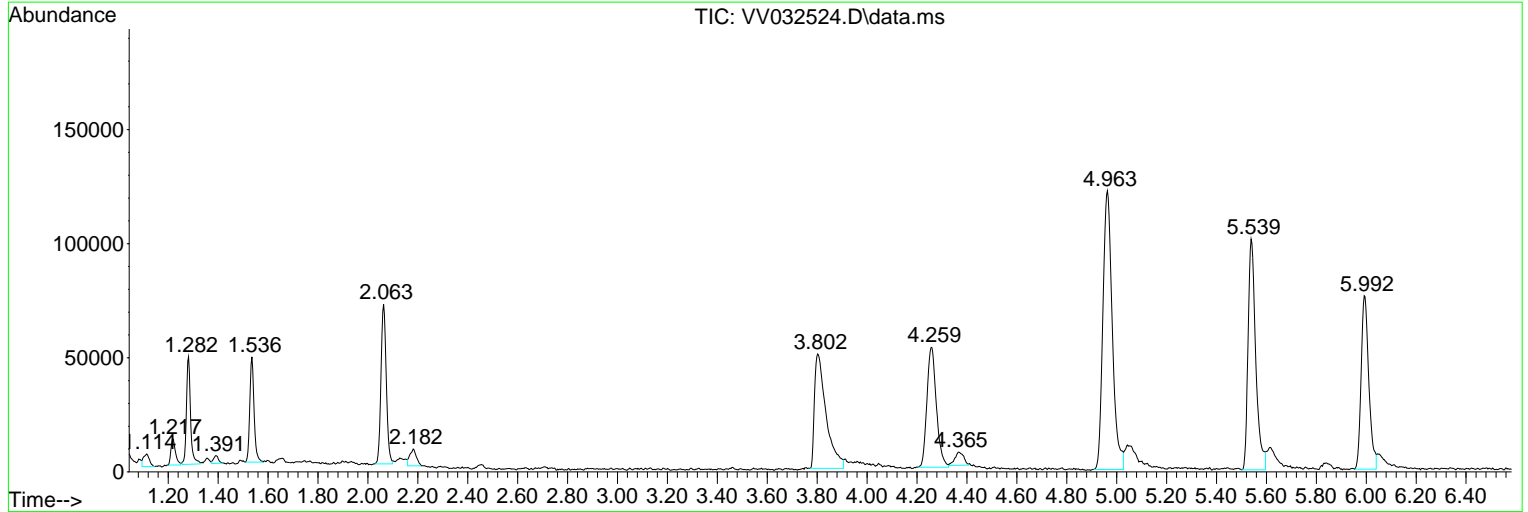
Sum of corrected areas: 3006894

Data Path : Z:\voasrv\HPCHEM1\MSVOA\_V\Data\VV102023\  
 Data File : VV032524.D  
 Acq On : 20 Oct 2023 15:06  
 Operator : SY/MD  
 Sample : 04950-14  
 Misc : 25.0mL/MSVOA\_V/WATER  
 ALS Vial : 17 Sample Multiplier: 1

Instrument :  
 MSVOA\_V  
 ClientSampleId :  
 A49E5

Quant Method : Z:\voasrv\HPCHEM1\MSVOA\_V\Method\SFAMVTR092923WMA.M  
 Quant Title : TRACE VOA SFAM1.0

TIC Library : C:\Database\NIST20.L  
 TIC Integration Parameters: LSCINT.P



Data Path : Z:\voasrv\HPCHEM1\MSVOA\_V\Data\VV102023\  
 Data File : VV032524.D  
 Acq On : 20 Oct 2023 15:06  
 Operator : SY/MD  
 Sample : 04950-14  
 Misc : 25.0mL/MSVOA\_V/WATER  
 ALS Vial : 17 Sample Multiplier: 1

Instrument :  
 MSVOA\_V  
 ClientSampleId :  
 A49E5

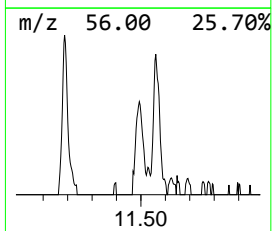
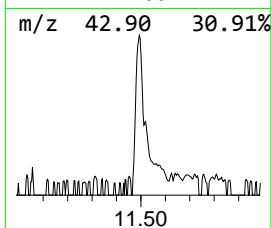
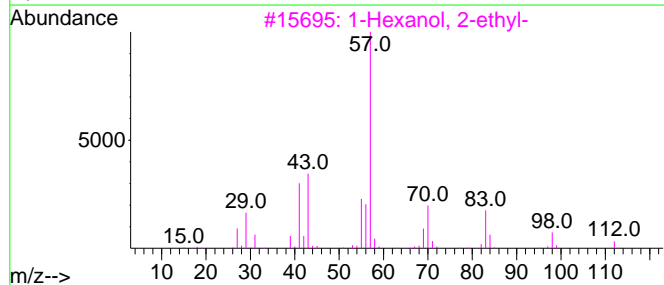
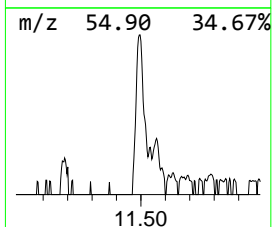
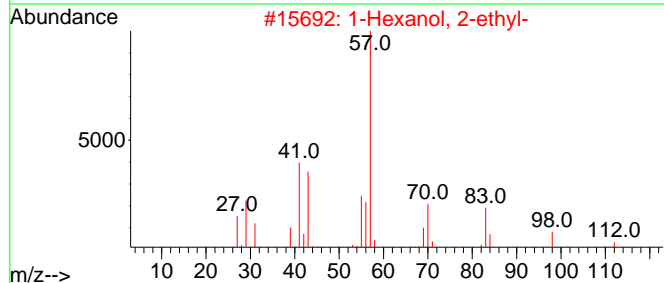
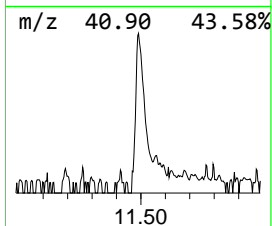
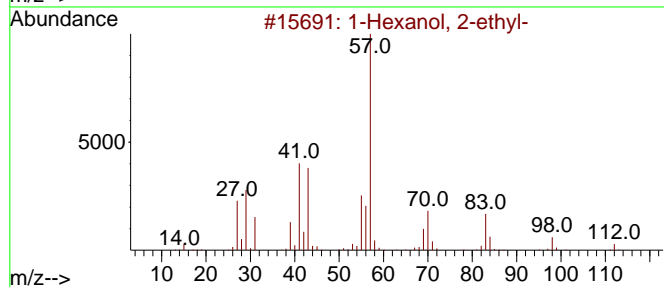
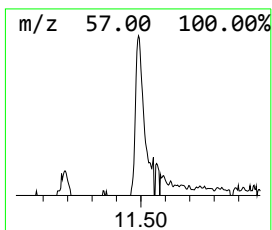
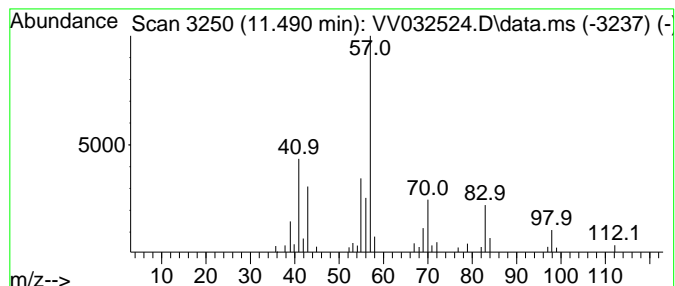
Quant Method : Z:\voasrv\HPCHEM1\MSVOA\_V\Method\SFAMVTR092923WMA.M  
 Quant Title : TRACE VOA SFAM1.0

TIC Library : C:\Database\NIST20.L  
 TIC Integration Parameters: LSCINT.P

\*\*\*\*\*  
 Peak Number 2 1-Hexanol, 2-ethyl- Concentration Rank 2

R.T.	EstConc	Area	Relative to ISTD	R.T.
11.490	0.63 ug/L	35584	1,4-Dichlorobenzene-d4	11.188

Hit#	of 5	Tentative ID	MW	MolForm	CAS#	Qual
1		1-Hexanol, 2-ethyl-	130	C8H18O	000104-76-7	83
2		1-Hexanol, 2-ethyl-	130	C8H18O	000104-76-7	83
3		1-Hexanol, 2-ethyl-	130	C8H18O	000104-76-7	83
4		2-Propyl-1-pentanol	130	C8H18O	058175-57-8	50
5		Heptyl isobutyl carbonate	216	C12H24O3	959068-08-7	47



Data Path : Z:\voasrv\HPCHEM1\MSVOA\_V\Data\VV102023\  
Data File : VV032524.D  
Acq On : 20 Oct 2023 15:06  
Operator : SY/MD  
Sample : 04950-14  
Misc : 25.0mL/MSVOA\_V/WATER  
ALS Vial : 17 Sample Multiplier: 1

Instrument :  
MSVOA\_V  
ClientSampleId :  
A49E5

Quant Method : Z:\voasrv\HPCHEM1\MSVOA\_V\Method\SFAMVTR092923WMA.M  
Quant Title : TRACE VOA SFAM1.0

TIC Library : C:\Database\NIST0.L  
TIC Integration Parameters: LSCINT.P

TIC Top Hit name	RT	EstConc	Units	Response	--Internal Standard--			
					#	RT	Resp	Conc
1-Hexanol, 2-et...	11.490	0.6	ug/L	35584	3	11.188	281246	5.0