

Data Path : Z:\VOASRV\HPCHEM1\MSVOA V\DATA\VV102120\  
 Data File : VV019055.D  
 Acq On : 21 Oct 2020 17:43  
 Operator : SY/MD  
 Sample : VIBLK63  
 Misc : 5.0mL/MSVOA V/WATER  
 ALS Vial : 1 Sample Multiplier: 1

Instrument :  
 MSVOA\_V  
 ClientSampleId :  
 VIBLK63

Integration Parameters: LSCINT.P

Integrator: RTE  
 Smoothing : OFF  
 Sampling : 1  
 Start Thrs: 0.2  
 Stop Thrs : 0

Filtering: 5  
 Min Area: 0 % of largest Peak  
 Max Peaks: 100  
 Peak Location: TOP

If leading or trailing edge < 100 prefer < Baseline drop else tangent >  
 Peak separation: 5

Method : Z:\VOASRV\HPCHEM1\MSVOA\_V\METHOD\SOMVLM101420WMA.M  
 Title : VOC Analysis

Signal : TIC

| peak # | R.T. min | first scan | max scan | last scan | PK TY | peak height | corr. area | corr. % max. | % of total |
|--------|----------|------------|----------|-----------|-------|-------------|------------|--------------|------------|
| 1      | 1.315    | 63         | 70       | 81        | rVB   | 197226      | 197369     | 13.65%       | 2.085%     |
| 2      | 1.579    | 144        | 152      | 167       | rBV   | 181215      | 201558     | 13.94%       | 2.129%     |
| 3      | 2.123    | 310        | 321      | 350       | rVB   | 356855      | 549561     | 38.01%       | 5.806%     |
| 4      | 2.438    | 417        | 419      | 422       | rBV3  | 676         | 373        | 0.03%        | 0.004%     |
| 5      | 2.586    | 462        | 465      | 471       | rBV2  | 359         | 347        | 0.02%        | 0.004%     |
| 6      | 2.614    | 471        | 474      | 476       | rBV2  | 318         | 218        | 0.02%        | 0.002%     |
| 7      | 2.666    | 487        | 490      | 494       | rBV2  | 393         | 379        | 0.03%        | 0.004%     |
| 8      | 2.856    | 546        | 549      | 553       | rVB2  | 362         | 223        | 0.02%        | 0.002%     |
| 9      | 2.926    | 569        | 571      | 576       | rVB2  | 333         | 257        | 0.02%        | 0.003%     |
| 10     | 2.955    | 577        | 580      | 583       | rBV   | 350         | 229        | 0.02%        | 0.002%     |
| 11     | 3.029    | 600        | 603      | 607       | rVB2  | 301         | 237        | 0.02%        | 0.003%     |
| 12     | 3.058    | 610        | 612      | 615       | rBV   | 472         | 223        | 0.02%        | 0.002%     |
| 13     | 3.116    | 626        | 630      | 633       | rBV3  | 375         | 316        | 0.02%        | 0.003%     |
| 14     | 3.241    | 666        | 669      | 672       | rBV2  | 383         | 286        | 0.02%        | 0.003%     |
| 15     | 3.550    | 760        | 765      | 769       | rBV2  | 317         | 241        | 0.02%        | 0.003%     |
| 16     | 3.573    | 769        | 772      | 776       | rBV   | 448         | 340        | 0.02%        | 0.004%     |
| 17     | 3.643    | 791        | 794      | 797       | rBV   | 634         | 446        | 0.03%        | 0.005%     |
| 18     | 3.820    | 845        | 849      | 853       | rBV2  | 428         | 348        | 0.02%        | 0.004%     |
| 19     | 3.843    | 853        | 856      | 861       | rVB   | 283         | 210        | 0.01%        | 0.002%     |
| 20     | 3.872    | 861        | 865      | 867       | rBV   | 390         | 293        | 0.02%        | 0.003%     |
| 21     | 3.910    | 867        | 877      | 913       | rBV   | 81151       | 252219     | 17.45%       | 2.665%     |
| 22     | 4.264    | 983        | 987      | 988       | rBV2  | 464         | 325        | 0.02%        | 0.003%     |
| 23     | 4.315    | 999        | 1003     | 1005      | rBV2  | 325         | 238        | 0.02%        | 0.003%     |
| 24     | 4.376    | 1005       | 1022     | 1052      | rBV   | 230224      | 553836     | 38.31%       | 5.851%     |
| 25     | 4.647    | 1104       | 1106     | 1110      | rBV3  | 336         | 232        | 0.02%        | 0.002%     |
| 26     | 4.782    | 1145       | 1148     | 1152      | rVB4  | 486         | 365        | 0.03%        | 0.004%     |
| 27     | 4.849    | 1165       | 1169     | 1170      | rBV2  | 392         | 215        | 0.01%        | 0.002%     |
| 28     | 4.865    | 1170       | 1174     | 1176      | rVB2  | 504         | 356        | 0.02%        | 0.004%     |
| 29     | 5.071    | 1221       | 1238     | 1281      | rBV2  | 561536      | 1445773    | 100.00%      | 15.274%    |
| 30     | 5.511    | 1372       | 1375     | 1379      | rVB   | 460         | 365        | 0.03%        | 0.004%     |
| 31     | 5.592    | 1397       | 1400     | 1402      | rBV   | 572         | 403        | 0.03%        | 0.004%     |
| 32     | 5.640    | 1402       | 1415     | 1442      | rBV   | 355917      | 702039     | 48.56%       | 7.417%     |
| 33     | 5.859    | 1478       | 1483     | 1486      | rBV2  | 263         | 252        | 0.02%        | 0.003%     |
| 34     | 5.929    | 1492       | 1505     | 1523      | rBV   | 31813       | 66354      | 4.59%        | 0.701%     |

Data Path : Z:\VOASRV\HPCHEM1\MSVOA V\DATA\VV102120\  
 Data File : VV019055.D  
 Acq On : 21 Oct 2020 17:43  
 Operator : SY/MD  
 Sample : VIBLK63  
 Misc : 5.0mL/MSVOA V/WATER  
 ALS Vial : 1 Sample Multiplier: 1

Instrument :  
 MSVOA\_V  
 ClientSampleId :  
 VIBLK63

## Integration Parameters: LSCINT.P

Integrator: RTE  
 Smoothing : OFF  
 Sampling : 1  
 Start Thrs: 0.2  
 Stop Thrs : 0

Filtering: 5  
 Min Area: 0 % of largest Peak  
 Max Peaks: 100  
 Peak Location: TOP

If leading or trailing edge < 100 prefer < Baseline drop else tangent >  
 Peak separation: 5

Method : Z:\VOASRV\HPCHEM1\MSVOA\_V\METHOD\SOMVLM101420WMA.M  
 Title : VOC Analysis

|    |        |      |      |      |      |        |        |        |        |
|----|--------|------|------|------|------|--------|--------|--------|--------|
| 35 | 6.093  | 1540 | 1556 | 1580 | rBV  | 244582 | 492834 | 34.09% | 5.207% |
| 36 | 6.248  | 1599 | 1604 | 1609 | rVV6 | 783    | 909    | 0.06%  | 0.010% |
| 37 | 6.277  | 1611 | 1613 | 1619 | rVB4 | 270    | 234    | 0.02%  | 0.002% |
| 38 | 6.566  | 1698 | 1703 | 1708 | rVB2 | 237    | 280    | 0.02%  | 0.003% |
| 39 | 6.650  | 1723 | 1729 | 1733 | rVB3 | 239    | 246    | 0.02%  | 0.003% |
| 40 | 6.679  | 1733 | 1738 | 1740 | rBV3 | 580    | 357    | 0.02%  | 0.004% |
| 41 | 6.704  | 1744 | 1746 | 1752 | rVV3 | 390    | 362    | 0.03%  | 0.004% |
| 42 | 6.798  | 1768 | 1775 | 1780 | rBV  | 323    | 367    | 0.03%  | 0.004% |
| 43 | 6.917  | 1808 | 1812 | 1815 | rBV2 | 340    | 283    | 0.02%  | 0.003% |
| 44 | 7.007  | 1829 | 1840 | 1864 | rBV  | 140367 | 254815 | 17.62% | 2.692% |
| 45 | 7.338  | 1930 | 1943 | 1973 | rBV  | 522553 | 913516 | 63.19% | 9.651% |
| 46 | 7.643  | 2028 | 2038 | 2060 | rBV  | 104290 | 182371 | 12.61% | 1.927% |
| 47 | 7.804  | 2086 | 2088 | 2094 | rVB3 | 464    | 321    | 0.02%  | 0.003% |
| 48 | 7.836  | 2094 | 2098 | 2099 | rBV2 | 491    | 298    | 0.02%  | 0.003% |
| 49 | 7.907  | 2113 | 2120 | 2124 | rVB2 | 288    | 371    | 0.03%  | 0.004% |
| 50 | 7.929  | 2124 | 2127 | 2134 | rVB3 | 294    | 254    | 0.02%  | 0.003% |
| 51 | 7.997  | 2145 | 2148 | 2149 | rVV3 | 388    | 198    | 0.01%  | 0.002% |
| 52 | 8.010  | 2149 | 2152 | 2154 | rVB  | 418    | 258    | 0.02%  | 0.003% |
| 53 | 8.109  | 2169 | 2183 | 2217 | rBV2 | 258265 | 517051 | 35.76% | 5.462% |
| 54 | 8.328  | 2249 | 2251 | 2257 | rVB4 | 567    | 351    | 0.02%  | 0.004% |
| 55 | 8.479  | 2295 | 2298 | 2300 | rBV2 | 323    | 255    | 0.02%  | 0.003% |
| 56 | 8.592  | 2330 | 2333 | 2336 | rBV3 | 336    | 287    | 0.02%  | 0.003% |
| 57 | 8.617  | 2339 | 2341 | 2344 | rVV2 | 355    | 212    | 0.01%  | 0.002% |
| 58 | 8.871  | 2409 | 2420 | 2449 | rBV  | 561534 | 906081 | 62.67% | 9.572% |
| 59 | 9.174  | 2511 | 2514 | 2519 | rVB  | 318    | 259    | 0.02%  | 0.003% |
| 60 | 9.267  | 2537 | 2543 | 2547 | rBV2 | 266    | 264    | 0.02%  | 0.003% |
| 61 | 9.302  | 2547 | 2554 | 2556 | rBV2 | 338    | 335    | 0.02%  | 0.004% |
| 62 | 9.383  | 2576 | 2579 | 2584 | rVB2 | 283    | 201    | 0.01%  | 0.002% |
| 63 | 9.498  | 2607 | 2615 | 2619 | rBV  | 295    | 394    | 0.03%  | 0.004% |
| 64 | 9.859  | 2720 | 2727 | 2728 | rBV  | 354    | 316    | 0.02%  | 0.003% |
| 65 | 9.920  | 2737 | 2746 | 2751 | rBV2 | 382    | 567    | 0.04%  | 0.006% |
| 66 | 10.158 | 2817 | 2820 | 2823 | rBV  | 305    | 205    | 0.01%  | 0.002% |
| 67 | 10.238 | 2832 | 2845 | 2862 | rBV  | 283335 | 447333 | 30.94% | 4.726% |
| 68 | 10.299 | 2862 | 2864 | 2870 | rVB2 | 585    | 312    | 0.02%  | 0.003% |
| 69 | 10.457 | 2910 | 2913 | 2919 | rVB  | 251    | 243    | 0.02%  | 0.003% |
| 70 | 10.977 | 3072 | 3075 | 3079 | rBV  | 352    | 221    | 0.02%  | 0.002% |
| 71 | 11.270 | 3155 | 3166 | 3190 | rBV  | 563556 | 858810 | 59.40% | 9.073% |

Data Path : Z:\VOASRV\HPCHEM1\MSVOA V\DATA\VV102120\  
 Data File : VV019055.D  
 Acq On : 21 Oct 2020 17:43  
 Operator : SY/MD  
 Sample : VIBLK63  
 Misc : 5.0mL/MSVOA V/WATER  
 ALS Vial : 1 Sample Multiplier: 1

Instrument :  
 MSVOA\_V  
 ClientSampleId :  
 VIBLK63

## Integration Parameters: LSCINT.P

Integrator: RTE  
 Smoothing : OFF  
 Sampling : 1  
 Start Thrs: 0.2  
 Stop Thrs : 0

Filtering: 5  
 Min Area: 0 % of largest Peak  
 Max Peaks: 100  
 Peak Location: TOP

If leading or trailing edge < 100 prefer < Baseline drop else tangent >  
 Peak separation: 5

Method : Z:\VOASRV\HPCHEM1\MSVOA\_V\METHOD\SOMVLM101420WMA.M  
 Title : VOC Analysis

|     |        |      |      |      |      |        |        |        |        |
|-----|--------|------|------|------|------|--------|--------|--------|--------|
| 72  | 11.482 | 3228 | 3232 | 3235 | rBV2 | 373    | 371    | 0.03%  | 0.004% |
| 73  | 11.543 | 3248 | 3251 | 3254 | rVV2 | 342    | 211    | 0.01%  | 0.002% |
| 74  | 11.646 | 3270 | 3283 | 3305 | rBV  | 580807 | 897944 | 62.11% | 9.486% |
| 75  | 11.884 | 3353 | 3357 | 3360 | rBV2 | 542    | 398    | 0.03%  | 0.004% |
| 76  | 11.910 | 3362 | 3365 | 3369 | rVV2 | 417    | 343    | 0.02%  | 0.004% |
| 77  | 11.929 | 3369 | 3371 | 3375 | rVV  | 408    | 307    | 0.02%  | 0.003% |
| 78  | 11.965 | 3379 | 3382 | 3386 | rBV  | 391    | 298    | 0.02%  | 0.003% |
| 79  | 12.019 | 3395 | 3399 | 3403 | rBV2 | 327    | 349    | 0.02%  | 0.004% |
| 80  | 12.122 | 3428 | 3431 | 3434 | rBV  | 412    | 232    | 0.02%  | 0.002% |
| 81  | 12.260 | 3472 | 3474 | 3480 | rVB3 | 322    | 215    | 0.01%  | 0.002% |
| 82  | 12.328 | 3491 | 3495 | 3497 | rBV2 | 294    | 205    | 0.01%  | 0.002% |
| 83  | 12.370 | 3505 | 3508 | 3512 | rBV  | 301    | 225    | 0.02%  | 0.002% |
| 84  | 12.502 | 3543 | 3549 | 3552 | rBV  | 539    | 536    | 0.04%  | 0.006% |
| 85  | 12.563 | 3566 | 3568 | 3574 | rVB  | 346    | 307    | 0.02%  | 0.003% |
| 86  | 12.643 | 3590 | 3593 | 3598 | rBV3 | 275    | 261    | 0.02%  | 0.003% |
| 87  | 12.717 | 3612 | 3616 | 3619 | rBV2 | 355    | 319    | 0.02%  | 0.003% |
| 88  | 12.836 | 3650 | 3653 | 3656 | rBV  | 258    | 205    | 0.01%  | 0.002% |
| 89  | 13.032 | 3709 | 3714 | 3716 | rBV2 | 261    | 248    | 0.02%  | 0.003% |
| 90  | 13.090 | 3726 | 3732 | 3734 | rBV2 | 250    | 276    | 0.02%  | 0.003% |
| 91  | 13.209 | 3766 | 3769 | 3770 | rBV  | 386    | 198    | 0.01%  | 0.002% |
| 92  | 13.293 | 3790 | 3795 | 3797 | rBV3 | 574    | 470    | 0.03%  | 0.005% |
| 93  | 13.360 | 3810 | 3816 | 3819 | rBV2 | 403    | 523    | 0.04%  | 0.006% |
| 94  | 13.778 | 3940 | 3946 | 3951 | rBV4 | 641    | 909    | 0.06%  | 0.010% |
| 95  | 14.122 | 4051 | 4053 | 4055 | rBV  | 366    | 201    | 0.01%  | 0.002% |
| 96  | 14.656 | 4215 | 4219 | 4222 | rBV3 | 309    | 293    | 0.02%  | 0.003% |
| 97  | 14.936 | 4304 | 4306 | 4309 | rBV  | 363    | 238    | 0.02%  | 0.003% |
| 98  | 15.653 | 4527 | 4529 | 4532 | rBV3 | 432    | 301    | 0.02%  | 0.003% |
| 99  | 15.820 | 4577 | 4581 | 4583 | rBV2 | 405    | 324    | 0.02%  | 0.003% |
| 100 | 16.116 | 4671 | 4673 | 4677 | rBV2 | 597    | 496    | 0.03%  | 0.005% |

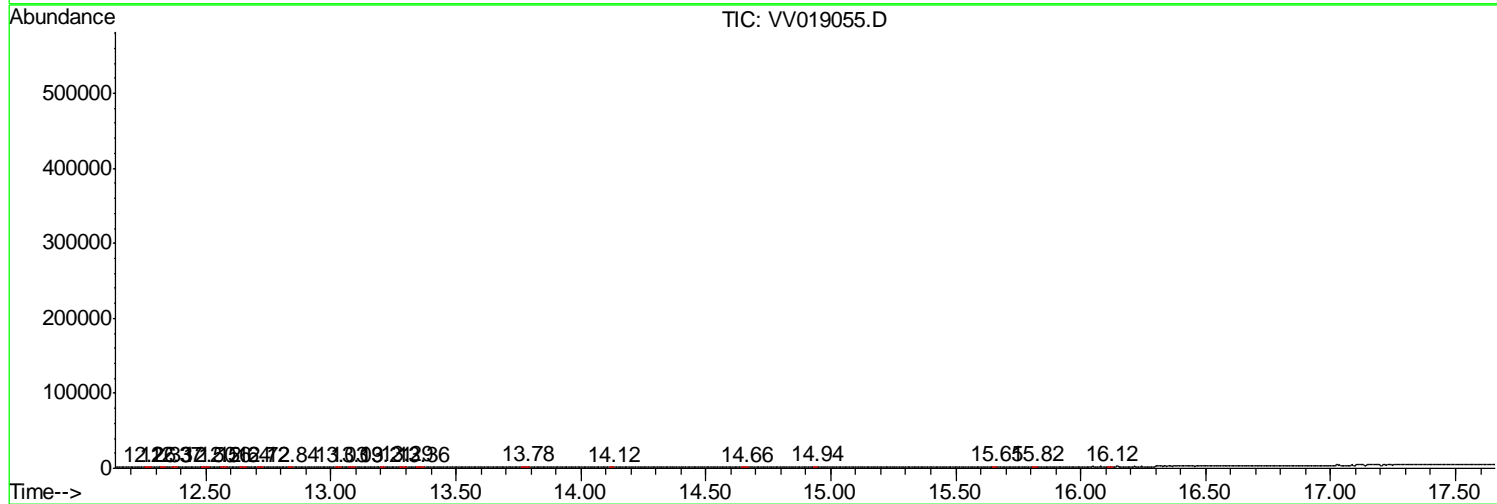
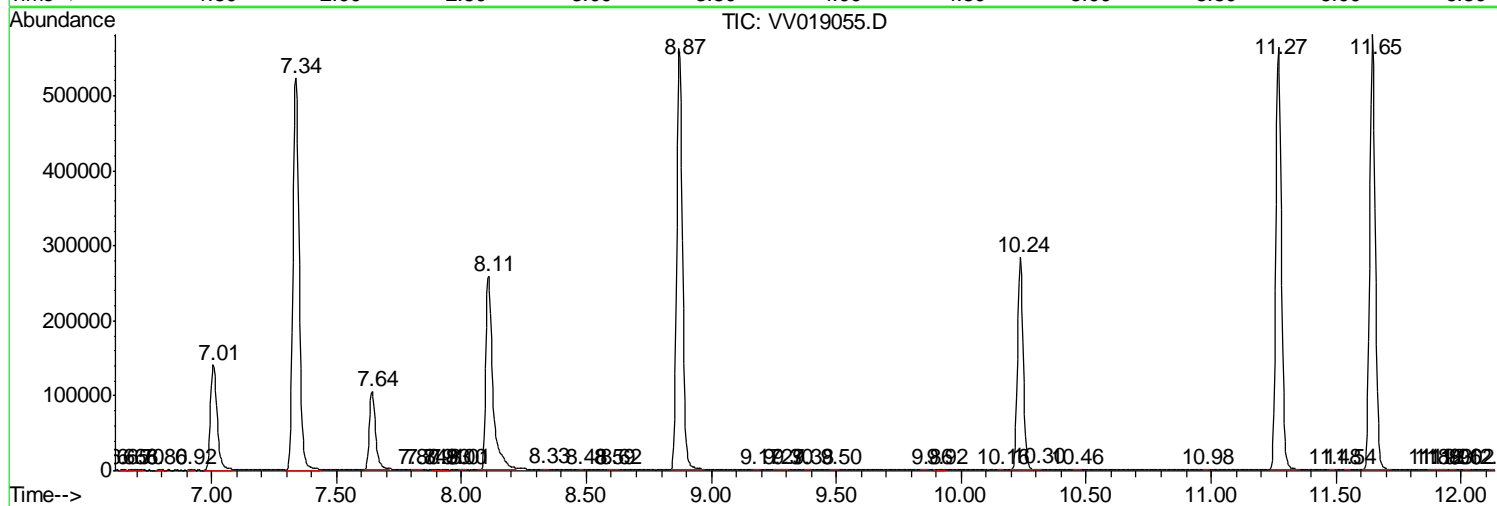
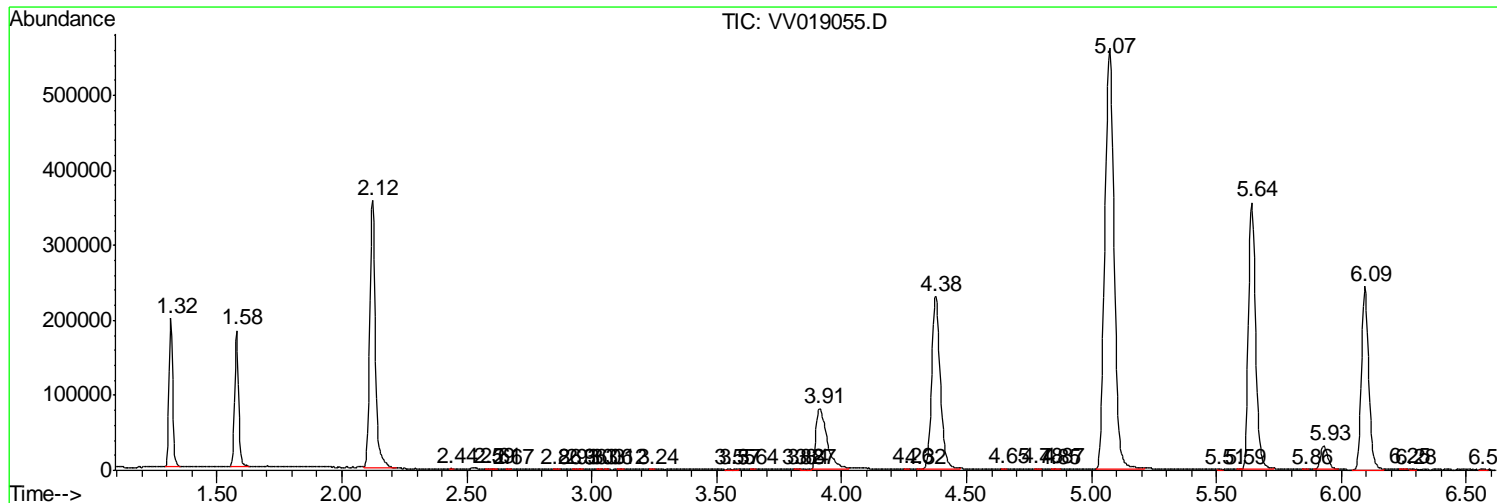
Sum of corrected areas: 9465600

Data Path : Z:\VOASRV\HPCHEM1\MSVOA V\DATA\VV102120\  
 Data File : VV019055.D  
 Acq On : 21 Oct 2020 17:43  
 Operator : SY/MD  
 Sample : VIBLK63  
 Misc : 5.0mL/MSVOA V/WATER  
 ALS Vial : 1 Sample Multiplier: 1

Instrument :  
 MSVOA\_V  
 Client Sampled :  
 VIBLK63

Quant Method : Z:\VOASRV\HPCHEM1\MSVOA\_V\METHOD\SOMVLM101420WMA.M  
 Quant Title : VOC Analysis

TIC Library : C:\DATABASE\NIST11.L  
 TIC Integration Parameters: LSCINT.P



Data Path : Z:\VOASRV\HPCHEM1\MSVOA\_V\DATA\VV102120\  
Data File : VV019055.D  
Acq On : 21 Oct 2020 17:43  
Operator : SY/MD  
Sample : VIBLK63  
Misc : 5.0mL/MSVOA\_V/WATER  
ALS Vial : 1 Sample Multiplier: 1

Instrument :  
MSVOA\_V  
ClientSampleId :  
VIBLK63

Quant Method : Z:\VOASRV\HPCHEM1\MSVOA\_V\METHOD\SOMVLM101420WMA.M  
Quant Title : VOC Analysis

TIC Library : C:\DATABASE\NIST11.L  
TIC Integration Parameters: LSCINT.P

No Library Search Compounds Detected

\*\*\*\*\*

Data Path : Z:\VOASRV\HPCHEM1\MSVOA\_V\DATA\VV102120\  
Data File : VV019055.D  
Acq On : 21 Oct 2020 17:43  
Operator : SY/MD  
Sample : VIBLK63  
Misc : 5.0mL/MSVOA\_V/WATER  
ALS Vial : 1 Sample Multiplier: 1

Instrument :  
MSVOA\_V  
ClientSampleId :  
VIBLK63

Quant Method : Z:\VOASRV\HPCHEM1\MSVOA\_V\METHOD\SOMVLM101420WMA.M  
Quant Title : VOC Analysis

TIC Library : C:\DATABASE\NIST11.L  
TIC Integration Parameters: LSCINT.P

| TIC Top Hit name | RT | EstConc | Units | Response | --Internal Standard-- |    |      |      |
|------------------|----|---------|-------|----------|-----------------------|----|------|------|
|                  |    |         |       |          | #                     | RT | Resp | Conc |

---