

Data Path : Z:\voasrv\HPCHEM1\MSVOA\_V\Data\VV102323\  
 Data File : VV032581.D  
 Acq On : 23 Oct 2023 19:31  
 Operator : SY/MD  
 Sample : 04950-26DL 4X  
 Misc : 25.0mL/MSVOA\_V/WATER  
 ALS Vial : 24 Sample Multiplier: 1

Instrument :  
 MSVOA\_V  
 ClientSampleId :  
 A4AA1DL

Integration Parameters: rteint.p

Integrator: RTE

Smoothing : ON

Sampling : 1

Start Thrs: 0.1

Stop Thrs : 0

Filtering: 5

Min Area: 3 % of largest Peak

Max Peaks: 100

Peak Location: TOP

If leading or trailing edge < 100 prefer < Baseline drop else tangent >

Peak separation: 5

Method : Z:\voasrv\HPCHEM1\MSVOA\_V\Method\SFAMVTR092923WMA.M

Title : TRACE VOA SFAM1.0

Signal : TIC: VV032581.D\data.ms

peak #	R.T. min	first scan	max scan	last scan	PK TY	peak height	corr. area	corr. % max.	% of total
1	1.105	15	20	35	rVB2	17695	24672	5.45%	0.592%
2	1.278	67	74	86	rBV2	52942	59377	13.11%	1.424%
3	1.535	146	154	156	rBV	45624	50902	11.24%	1.221%
4	2.063	308	318	330	rBV2	107681	190797	42.12%	4.577%
5	2.127	330	338	347	rVV	22823	48488	10.70%	1.163%
6	2.188	351	357	373	rVB5	18769	39302	8.68%	0.943%
7	2.384	410	418	427	rBV2	4111	8513	1.88%	0.204%
8	2.449	431	438	451	rVB3	11249	19238	4.25%	0.462%
9	2.696	503	515	526	rBV	13510	25191	5.56%	0.604%
10	3.117	634	646	658	rBV3	6846	13524	2.99%	0.324%
11	3.809	849	861	894	rBV3	46149	171294	37.81%	4.109%
12	4.159	958	970	984	rBV4	10618	26283	5.80%	0.631%
13	4.256	985	1000	1025	rVV3	59652	199416	44.02%	4.784%
14	4.371	1025	1036	1052	rVB5	9518	30061	6.64%	0.721%
15	4.516	1067	1081	1093	rVB3	7471	18344	4.05%	0.440%
16	4.735	1133	1149	1163	rBV5	10144	27365	6.04%	0.656%
17	4.960	1204	1219	1238	rBV2	113648	297502	65.67%	7.137%
18	5.053	1239	1248	1266	rVB6	14764	39113	8.63%	0.938%
19	5.538	1388	1399	1415	rBV	105018	221246	48.84%	5.308%
20	5.844	1481	1494	1510	rBV7	12058	27344	6.04%	0.656%
21	5.992	1526	1540	1554	rBV3	75080	159815	35.28%	3.834%
22	6.918	1818	1828	1836	rBV	33585	60974	13.46%	1.463%
23	6.960	1837	1841	1855	rVB2	17304	32349	7.14%	0.776%
24	7.165	1893	1905	1920	rBV2	75054	157009	34.66%	3.767%
25	7.246	1921	1930	1955	rVB	127301	255077	56.31%	6.119%
26	7.558	2018	2027	2035	rBV2	22022	40522	8.95%	0.972%
27	7.776	2087	2095	2104	rBV5	8898	16550	3.65%	0.397%
28	7.908	2121	2136	2154	rVB3	20774	41560	9.17%	0.997%
29	8.030	2163	2174	2218	rBV	185973	453010	100.00%	10.868%
30	8.291	2245	2255	2268	rBV3	9602	17122	3.78%	0.411%
31	8.365	2271	2278	2292	rVB3	6250	10179	2.25%	0.244%
32	8.789	2399	2410	2446	rBV2	184152	426309	94.11%	10.227%
33	9.673	2675	2685	2696	rBV7	5386	10362	2.29%	0.249%
34	10.156	2824	2835	2855	rBV	69363	128743	28.42%	3.089%
35	10.857	3041	3053	3064	rBV	46011	72293	15.96%	1.734%
36	11.123	3126	3136	3146	rBV2	27559	45798	10.11%	1.099%

Data Path : Z:\voasrv\HPCHEM1\MSVOA\_V\Data\VV102323\  
 Data File : VV032581.D  
 Acq On : 23 Oct 2023 19:31  
 Operator : SY/MD  
 Sample : 04950-26DL 4X  
 Misc : 25.0mL/MSVOA\_V/WATER  
 ALS Vial : 24 Sample Multiplier: 1

Instrument :  
 MSVOA\_V  
 ClientSampleId :  
 A4AA1DL

Integration Parameters: rteint.p  
 Integrator: RTE  
 Smoothing : ON Filtering: 5  
 Sampling : 1 Min Area: 3 % of largest Peak  
 Start Thrs: 0.1 Max Peaks: 100  
 Stop Thrs : 0 Peak Location: TOP

If leading or trailing edge < 100 prefer < Baseline drop else tangent >  
 Peak separation: 5

Method : Z:\voasrv\HPCHEM1\MSVOA\_V\Method\SFAMVTR092923WMA.M  
 Title : TRACE VOA SFAM1.0

37	11.188	3146	3156	3176	rVV	180200	313839	69.28%	7.529%
38	11.564	3263	3273	3288	rBV	142243	228950	50.54%	5.493%
39	12.586	3579	3591	3603	rBV2	46212	71959	15.88%	1.726%
40	13.204	3771	3783	3795	rBV2	35773	57824	12.76%	1.387%
41	13.686	3924	3933	3944	rVB5	19108	30133	6.65%	0.723%

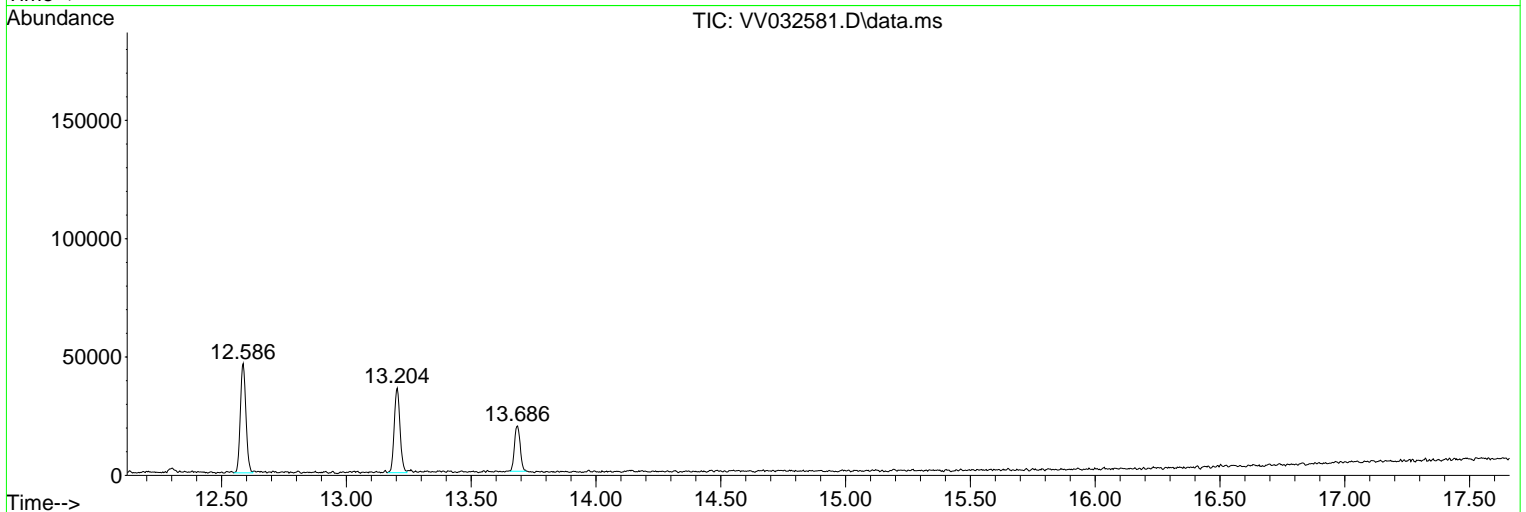
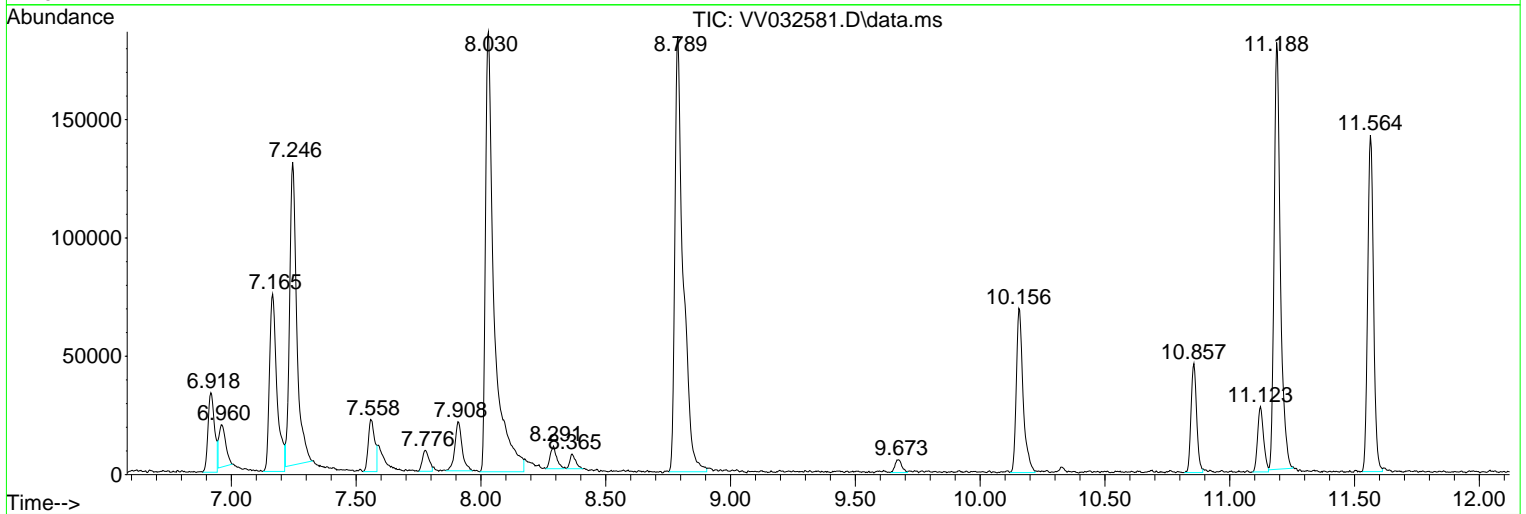
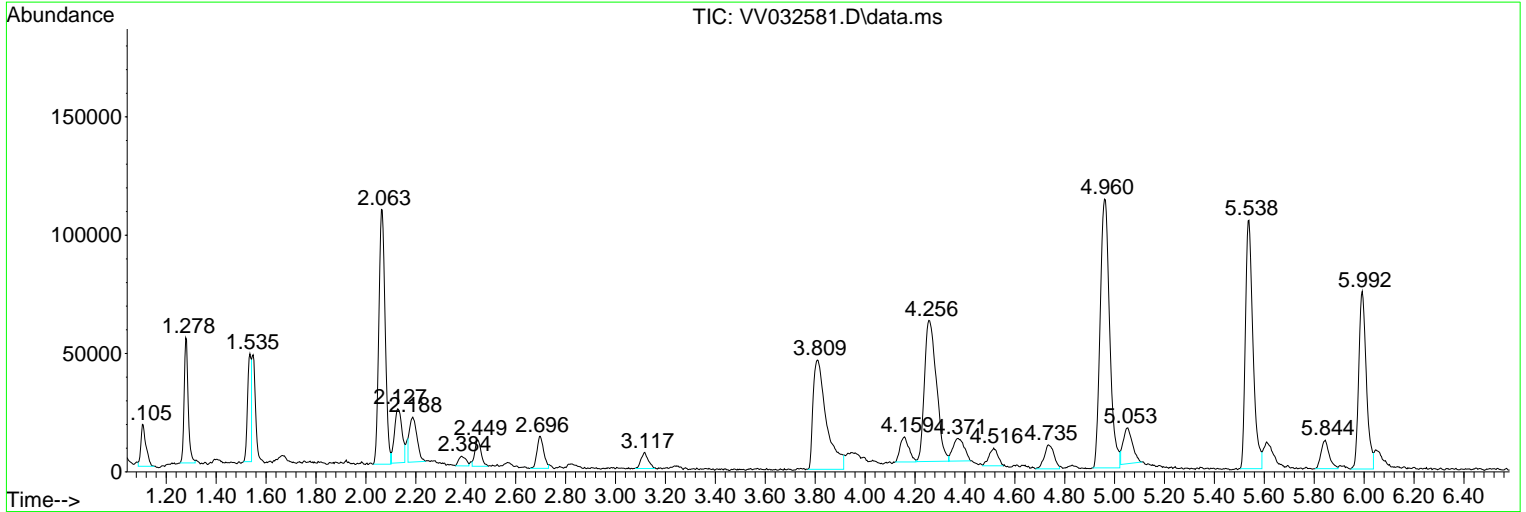
Sum of corrected areas: 4168349

Data Path : Z:\voasrv\HPCHEM1\MSVOA\_V\Data\VV102323\  
 Data File : VV032581.D  
 Acq On : 23 Oct 2023 19:31  
 Operator : SY/MD  
 Sample : 04950-26DL 4X  
 Misc : 25.0mL/MSVOA\_V/WATER  
 ALS Vial : 24 Sample Multiplier: 1

Instrument :  
 MSVOA\_V  
 ClientSampleId :  
 A4AA1DL

Quant Method : Z:\voasrv\HPCHEM1\MSVOA\_V\Method\SFAMVTR092923WMA.M  
 Quant Title : TRACE VOA SFAM1.0

TIC Library : C:\Database\NIST20.L  
 TIC Integration Parameters: LSCINT.P



Data Path : Z:\voasrv\HPCHEM1\MSVOA\_V\Data\VV102323\  
 Data File : VV032581.D  
 Acq On : 23 Oct 2023 19:31  
 Operator : SY/MD  
 Sample : 04950-26DL 4X  
 Misc : 25.0mL/MSVOA\_V/WATER  
 ALS Vial : 24 Sample Multiplier: 1

Instrument :  
 MSVOA\_V  
 ClientSampleId :  
 A4AA1DL

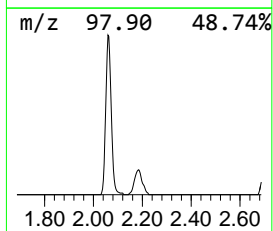
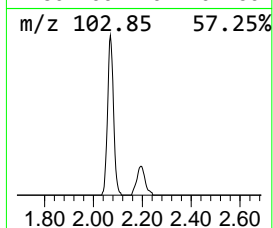
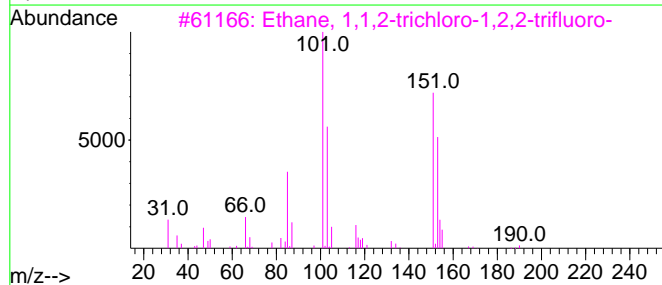
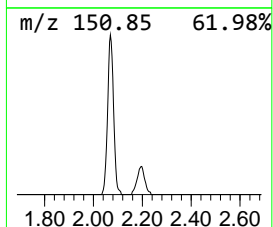
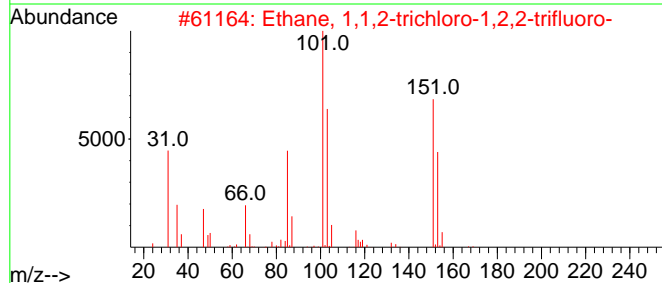
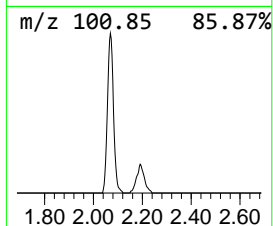
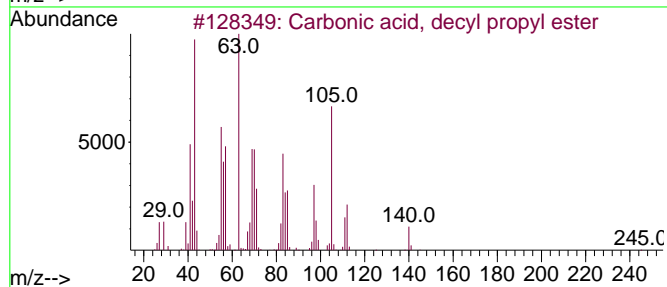
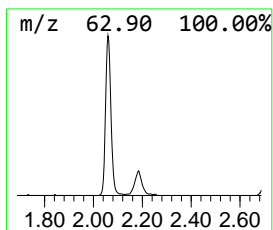
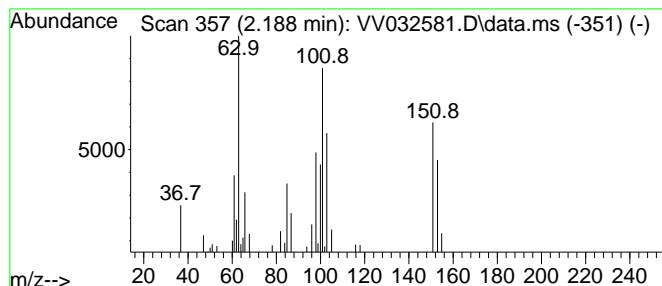
Quant Method : Z:\voasrv\HPCHEM1\MSVOA\_V\Method\SFAMVTR092923WMA.M  
 Quant Title : TRACE VOA SFAM1.0

TIC Library : C:\Database\NIST20.L  
 TIC Integration Parameters: LSCINT.P

\*\*\*\*\*  
 Peak Number 1 unknown-01 Concentration Rank 2

R.T.	EstConc	Area	Relative to ISTD	R.T.
2.188	0.89 ug/L	39302	1,4-Difluorobenzene	5.538

Hit#	of 5	Tentative ID	MW	MolForm	CAS#	Qual
1		Carbonic acid, decyl propyl ester	244	C14H28O3	1000314-53-7	12
2		Ethane, 1,1,2-trichloro-1,2,2-tr...	186	C2Cl3F3	000076-13-1	11
3		Ethane, 1,1,2-trichloro-1,2,2-tr...	186	C2Cl3F3	000076-13-1	11
4		Ethane, 1,1,2-trichloro-1,2,2-tr...	186	C2Cl3F3	000076-13-1	10
5		Ethane, 1,1,2-trichloro-1,2,2-tr...	186	C2Cl3F3	000076-13-1	10



Data Path : Z:\voasrv\HPCHEM1\MSVOA\_V\Data\VV102323\  
 Data File : VV032581.D  
 Acq On : 23 Oct 2023 19:31  
 Operator : SY/MD  
 Sample : 04950-26DL 4X  
 Misc : 25.0mL/MSVOA\_V/WATER  
 ALS Vial : 24 Sample Multiplier: 1

Instrument :  
 MSVOA\_V  
 ClientSampleId :  
 A4AA1DL

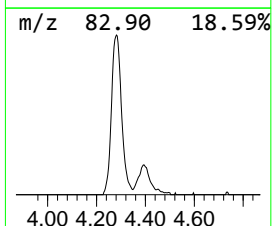
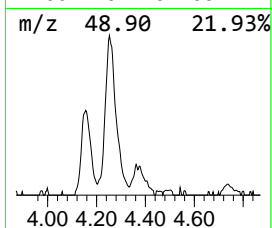
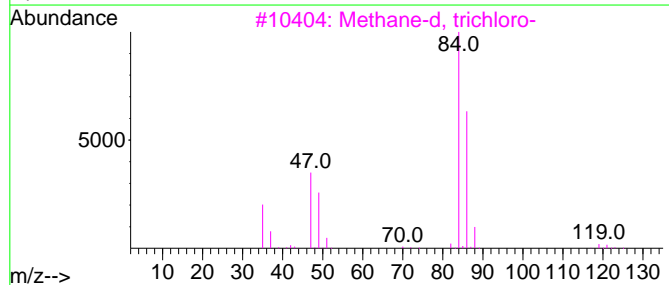
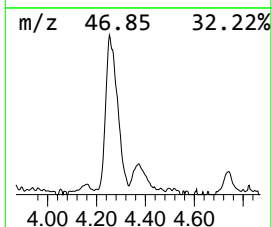
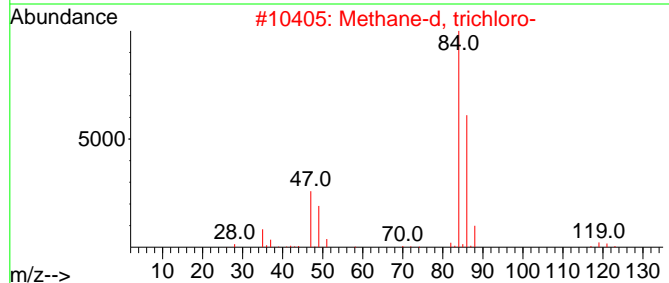
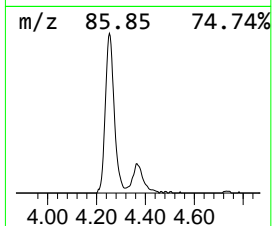
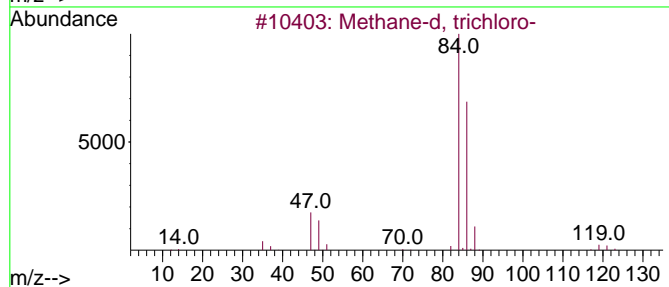
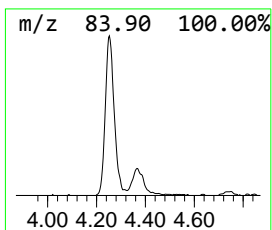
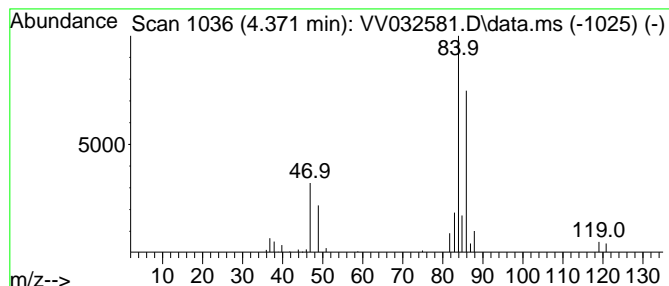
Quant Method : Z:\voasrv\HPCHEM1\MSVOA\_V\Method\SFAMVTR092923WMA.M  
 Quant Title : TRACE VOA SFAM1.0

TIC Library : C:\Database\NIST20.L  
 TIC Integration Parameters: LSCINT.P

\*\*\*\*\*  
 Peak Number 2 Methane-d, trichloro- Concentration Rank 3

R.T.	EstConc	Area	Relative to ISTD	R.T.
4.371	0.68 ug/L	30061	1,4-Difluorobenzene	5.538

Hit#	of	5	Tentative ID	MW	MolForm	CAS#	Qual
1			Methane-d, trichloro-	119	CDC13	000865-49-6	86
2			Methane-d, trichloro-	119	CDC13	000865-49-6	86
3			Methane-d, trichloro-	119	CDC13	000865-49-6	78
4			1-Buten-3-yne, 2-chloro-	86	C4H3Cl	017712-36-6	9
5			Acetaldehyde, dimethylhydrazone	86	C4H10N2	007422-90-4	9



Data Path : Z:\voasrv\HPCHEM1\MSVOA\_V\Data\VV102323\  
Data File : VV032581.D  
Acq On : 23 Oct 2023 19:31  
Operator : SY/MD  
Sample : 04950-26DL 4X  
Misc : 25.0mL/MSVOA\_V/WATER  
ALS Vial : 24 Sample Multiplier: 1

Instrument :  
MSVOA\_V  
ClientSampleId :  
A4AA1DL

Quant Method : Z:\voasrv\HPCHEM1\MSVOA\_V\Method\SFAMVTR092923WMA.M  
Quant Title : TRACE VOA SFAM1.0

TIC Library : C:\Database\NIST0.L  
TIC Integration Parameters: LSCINT.P

TIC Top Hit name	RT	EstConc	Units	Response	--Internal Standard--			
					#	RT	Resp	Conc
unknown-01	2.188	0.9	ug/L	39302	1	5.538	221246	5.0
Methane-d, tric...	4.371	0.7	ug/L	30061	1	5.538	221246	5.0