

Data File : VV013341.D
 Acq On : 25 Oct 2019 13:10
 Operator : SY/MD
 Sample : VSTDCCC005
 Misc : 25.0ML/MSVOA_V/WATER
 ALS Vial : 2 Sample Multiplier: 1

Instrument :
 MSVOA_V
 ClientSampleId :
 VSTD00555

Quant Time: Oct 26 00:58:01 2019
 Quant Method : Z:\VOASRV\HPCHEM1\MSVOA_V\METHOD\SOMVTR102119WMA.M
 Quant Title : TRACE VOA SOM01.0
 QLast Update : Fri Oct 25 04:42:43 2019
 Response via : Initial Calibration

Internal Standards	R.T.	QIon	Response	Conc	Units	Dev(Min)
1) 1,4-Difluorobenzene	5.66	114	581088	5.00	ug/L	0.00
28) Chlorobenzene-d5	8.89	117	608535	5.00	ug/L	0.00
60) 1,4-Dichlorobenzene-d4	11.29	152	388322	5.00	ug/L	0.00

System Monitoring Compounds

4) Vinyl Chloride-d3	1.32	65	215656	5.03	ug/L	0.00
Spiked Amount	5.000	Range	40 - 130	Recovery	=	100.60%
7) Chloroethane-d5	1.58	69	172261	4.87	ug/L	0.00
Spiked Amount	5.000	Range	65 - 130	Recovery	=	97.40%
11) 1,1-Dichloroethene-d2	2.13	63	343968	4.51	ug/L	0.00
Spiked Amount	5.000	Range	60 - 125	Recovery	=	90.20%
20) 2-Butanone-d5	3.95	46	443513	53.91	ug/L	0.00
Spiked Amount	50.000	Range	40 - 130	Recovery	=	107.82%
24) Chloroform-d	4.40	84	423690	4.21	ug/L	0.00
Spiked Amount	5.000	Range	70 - 125	Recovery	=	84.20%
26) 1,2-Dichloroethane-d4	5.08	65	193688	4.15	ug/L	0.00
Spiked Amount	5.000	Range	70 - 130	Recovery	=	83.00%
32) Benzene-d6	5.09	84	885624	4.49	ug/L	0.00
Spiked Amount	5.000	Range	70 - 125	Recovery	=	89.80%
36) 1,2-Dichloropropane-d6	6.11	67	258756	4.37	ug/L	0.00
Spiked Amount	5.000	Range	60 - 140	Recovery	=	87.40%
41) Toluene-d8	7.35	98	864197	4.74	ug/L	0.00
Spiked Amount	5.000	Range	70 - 130	Recovery	=	94.80%
43) trans-1,3-Dichloropropene-	7.66	79	96095	4.28	ug/L	0.00
Spiked Amount	5.000	Range	55 - 130	Recovery	=	85.60%
46) 2-Hexanone-d5	8.13	63	327194	40.92	ug/L	0.00
Spiked Amount	50.000	Range	45 - 130	Recovery	=	81.84%
57) 1,1,2,2-Tetrachloroethane-	10.26	84	167492	3.91	ug/L	0.00
Spiked Amount	5.000	Range	65 - 120	Recovery	=	78.20%
64) 1,2-Dichlorobenzene-d4	11.67	152	327433	4.33	ug/L	0.00
Spiked Amount	5.000	Range	80 - 120	Recovery	=	86.60%

Target Compounds

						Qvalue
2) Dichlorodifluoromethane	1.14	85	282031	4.390	ug/L	98
3) Chloromethane	1.25	50	234707	4.210	ug/L	100
5) Vinyl chloride	1.32	62	253175	4.515	ug/L	100
6) Bromomethane	1.54	94	154676	4.896	ug/L	100
8) Chloroethane	1.60	64	153205	4.584	ug/L	100
9) Trichlorofluoromethane	1.77	101	353488	4.356	ug/L	99
10) 1,1,2-Trichloro-1,2,2-trif	2.14	101	215892	4.502	ug/L	96
12) 1,1-Dichloroethene	2.14	96	205055	4.488	ug/L	91
13) Acetone	2.22	43	245287	57.663	ug/L #	43
14) Carbon disulfide	2.32	76	564634	4.305	ug/L	99
15) Methyl Acetate	2.47	43	86959	6.045	ug/L	96
16) Methylene chloride	2.53	84	286516	4.173	ug/L	96
17) Methyl tert-butyl Ether	2.80	73	544333	5.145	ug/L	97
18) trans-1,2-Dichloroethene	2.79	96	273287	5.074	ug/L	93
19) 1,1-Dichloroethane	3.23	63	473412	5.408	ug/L	97
21) 2-Butanone	4.04	43	551617	57.928	ug/L	98
22) cis-1,2-Dichloroethene	3.96	96	291216	5.052	ug/L #	91

Data File : VV013341.D
 Acq On : 25 Oct 2019 13:10
 Operator : SY/MD
 Sample : VSTDCCC005
 Misc : 25.0ML/MSVOA_V/WATER
 ALS Vial : 2 Sample Multiplier: 1

Instrument :
 MSVOA_V
 ClientSampleId :
 VSTD00555

Quant Time: Oct 26 00:58:01 2019
 Quant Method : Z:\VOASRV\HPCHEM1\MSVOA_V\METHOD\SOMVTR102119WMA.M
 Quant Title : TRACE VOA SOM01.0
 QLast Update : Fri Oct 25 04:42:43 2019
 Response via : Initial Calibration

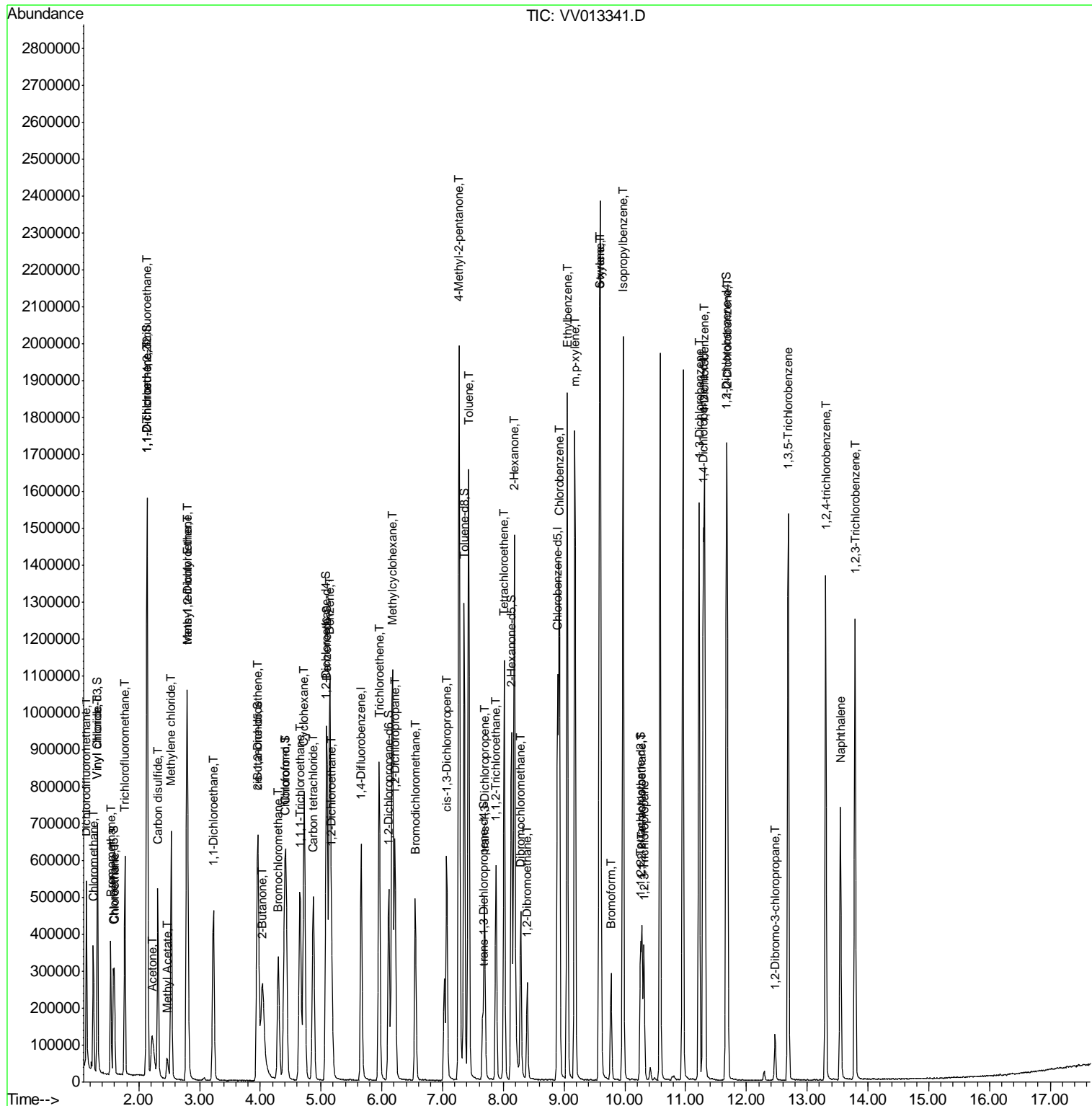
Internal Standards	R.T.	QIon	Response	Conc	Units	Dev(Min)
23) Bromochloromethane	4.30	128	128374	4.693	ug/L	92
25) Chloroform	4.42	83	500098	4.382	ug/L	99
27) 1,2-Dichloroethane	5.18	62	270894	4.445	ug/L	99
29) 1,1,1-Trichloroethane	4.65	97	415547	4.620	ug/L	99
30) Cyclohexane	4.72	56	422691	4.527	ug/L	98
31) Carbon tetrachloride	4.87	117	384382	4.763	ug/L	99
33) Benzene	5.14	78	1096881	4.720	ug/L	100
34) Trichloroethene	5.96	95	293494	4.707	ug/L	97
35) Methylcyclohexane	6.17	83	469626	4.895	ug/L	97
37) 1,2-Dichloropropane	6.22	63	261920	4.640	ug/L	100
38) Bromodichloromethane	6.55	83	330096	4.518	ug/L	100
39) cis-1,3-Dichloropropene	7.07	75	368965	4.641	ug/L	99
40) 4-Methyl-2-pentanone	7.27	43	1350432	46.803	ug/L	96
42) Toluene	7.43	91	1209699	4.958	ug/L	98
44) trans-1,3-Dichloropropene	7.69	75	278954	4.632	ug/L	98
45) 1,1,2-Trichloroethane	7.88	97	188086	4.774	ug/L	97
47) Tetrachloroethene	8.01	164	281563	4.973	ug/L	99
48) 2-Hexanone	8.18	43	963268	46.766	ug/L	97
49) Dibromochloromethane	8.29	129	232615	4.687	ug/L	99
50) 1,2-Dibromoethane	8.39	107	172642	4.598	ug/L	99
51) Chlorobenzene	8.92	112	783879	4.907	ug/L	98
52) Ethylbenzene	9.05	91	1283861	5.047	ug/L	100
53) m,p-xylene	9.18	106	515886	5.298	ug/L	98
54) o-xylene	9.58	106	483930	5.234	ug/L	97
55) Styrene	9.60	104	836497	5.324	ug/L	99
56) Isopropylbenzene	9.97	105	1301993	5.339	ug/L	99
58) 1,1,2,2-Tetrachloroethane	10.28	83	191299	4.224	ug/L	96
59) 1,2,3-Trichloropropane	10.32	75	146732	4.359	ug/L	95
61) Bromoform	9.77	173	137688	4.651	ug/L	100
62) 1,3-Dichlorobenzene	11.22	146	686484	5.020	ug/L	99
63) 1,4-Dichlorobenzene	11.31	146	678173	4.898	ug/L	97
65) 1,2-Dichlorobenzene	11.68	146	612837	4.866	ug/L	99
66) 1,2-Dibromo-3-chloropropan	12.47	75	28238	3.948	ug/L #	79
67) 1,3,5-Trichlorobenzene	12.69	180	520580	5.149	ug/L	99
68) 1,2,4-trichlorobenzene	13.31	180	462214	5.226	ug/L	100
69) Naphthalene	13.55	128	604523	4.955	ug/L	99
70) 1,2,3-Trichlorobenzene	13.79	180	421889	5.136	ug/L	99

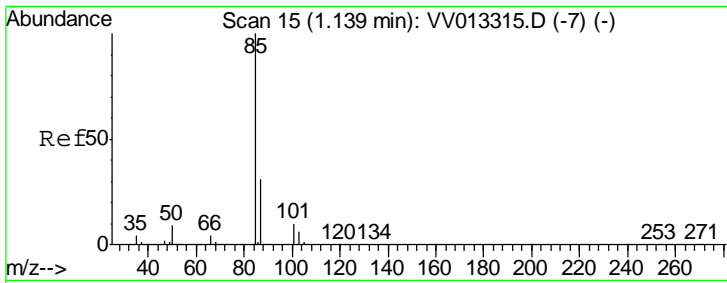
(#) = qualifier out of range (m) = manual integration (+) = signals summed

Data File : VV013341.D
Acq On : 25 Oct 2019 13:10
Operator : SY/MD
Sample : VSTDCCC005
Misc : 25.0ML/MSVOA_V/WATER
ALS Vial : 2 Sample Multiplier: 1

Instrument :
MSVOA_V
Client Sampled :
VSTD00555

Quant Time: Oct 26 00:58:01 2019
Quant Method : Z:\VOASRV\HPCHEM1\MSVOA_V\METHOD\SOMVTR102119WMA.M
Quant Title : TRACE VOA SOM1.0
QLast Update : Fri Oct 25 04:42:43 2019
Response via : Initial Calibration

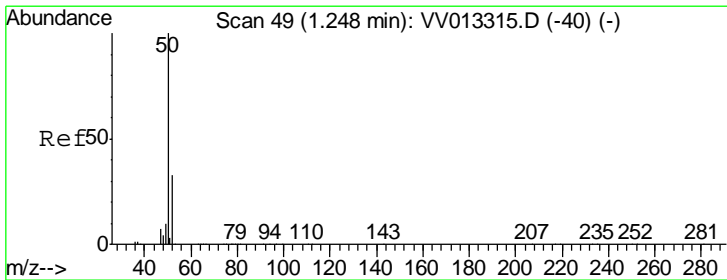
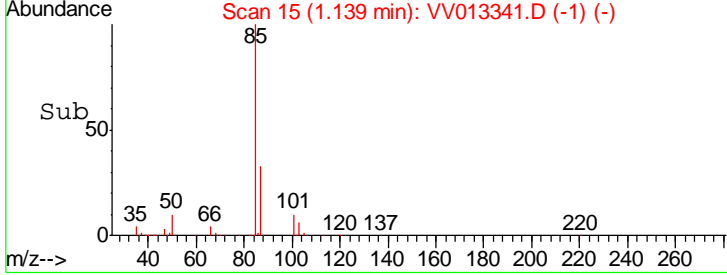
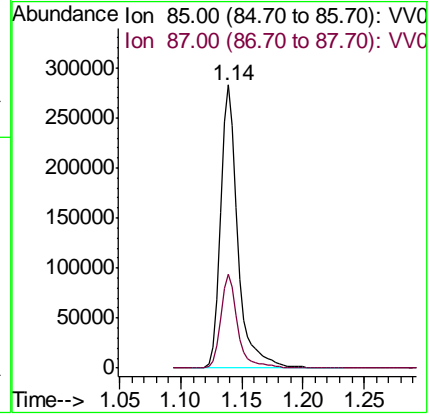
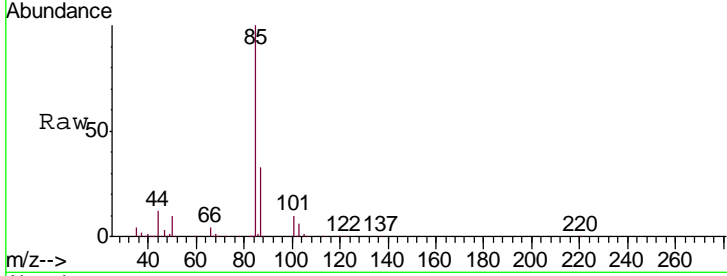




#2
 Dichlorodifluoromethane
 Concen: 4.390 ug/L
 RT: 1.14 min Scan# 15
 Delta R.T. -0.00 min
 Lab File: VV013341.D
 Acq: 25 Oct 2019 13:10

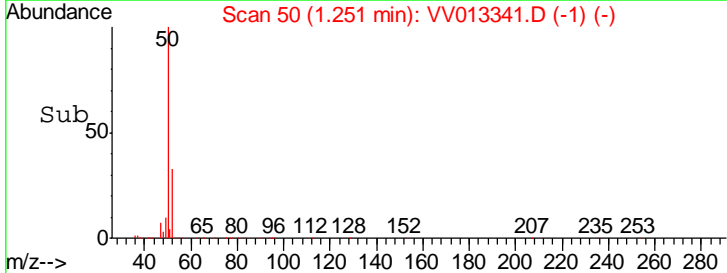
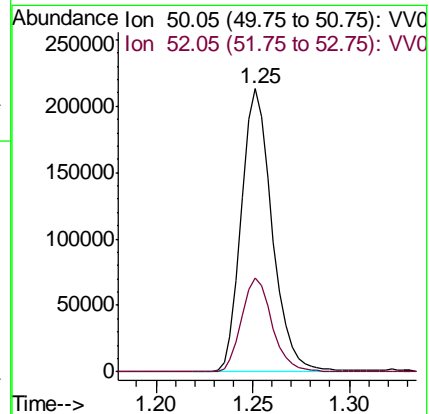
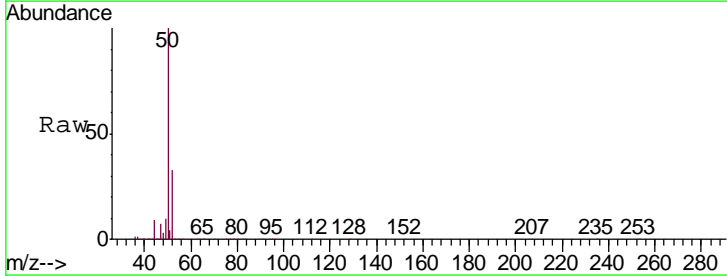
Instrument :
 MSVOA_V
 ClientSampled :
 VSTD00555

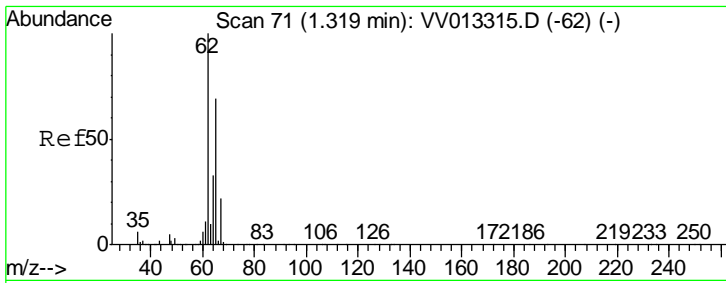
Tgt Ion: 85 Resp: 282031
 Ion Ratio Lower Upper
 85 100
 87 32.7 25.4 38.2



#3
 Chloromethane
 Concen: 4.210 ug/L
 RT: 1.25 min Scan# 50
 Delta R.T. 0.00 min
 Lab File: VV013341.D
 Acq: 25 Oct 2019 13:10

Tgt Ion: 50 Resp: 234707
 Ion Ratio Lower Upper
 50 100
 52 33.1 23.3 43.3

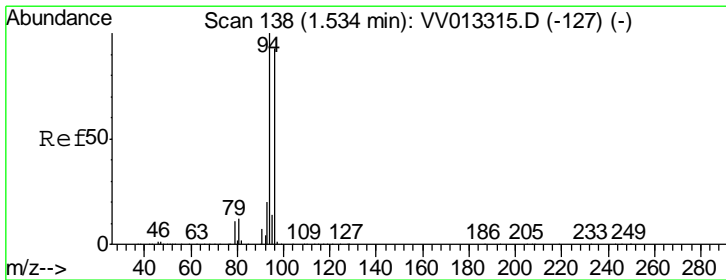
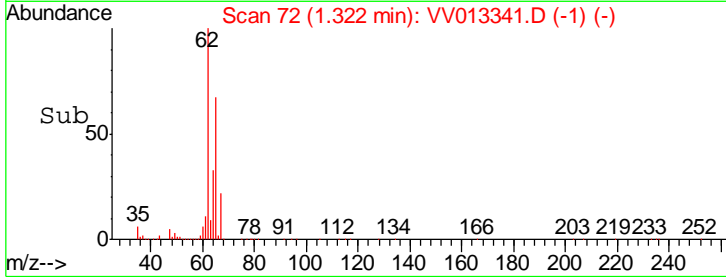
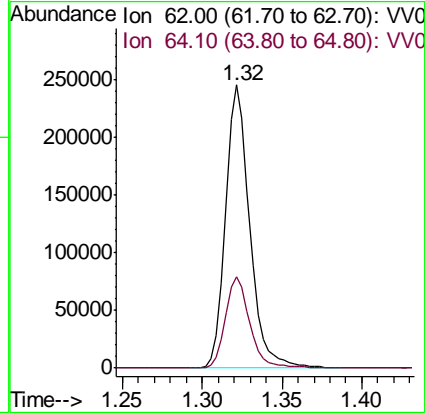
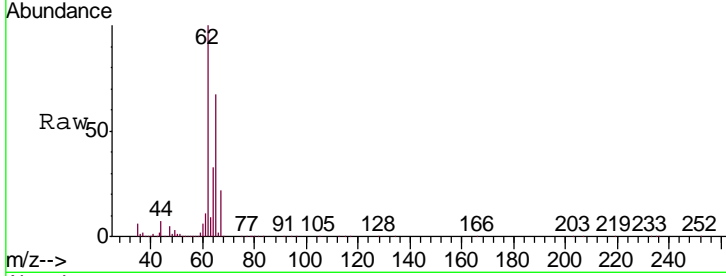




#5
 Vinyl chloride
 Concen: 4.515 ug/L
 RT: 1.32 min Scan# 72
 Delta R.T. 0.00 min
 Lab File: VV013341.D
 Acq: 25 Oct 2019 13:10

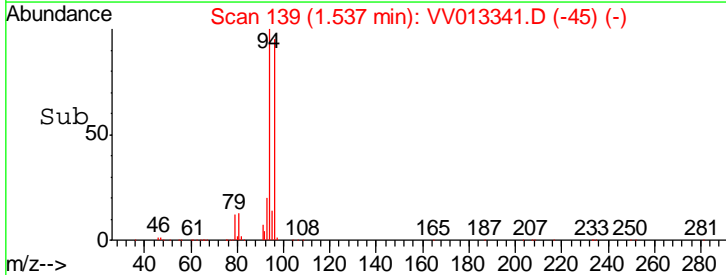
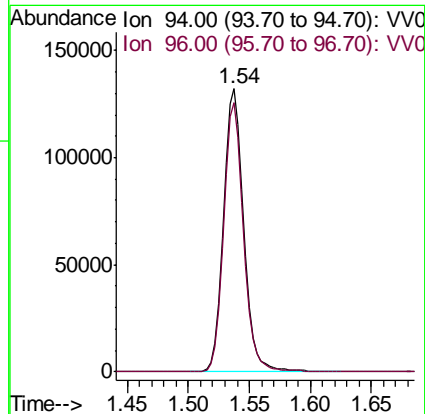
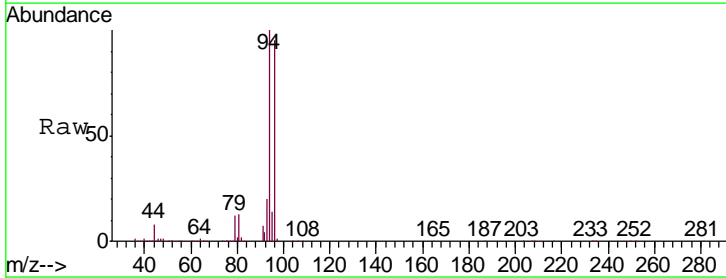
Instrument :
 MSVOA_V
 ClientSampleId :
 VSTD00555

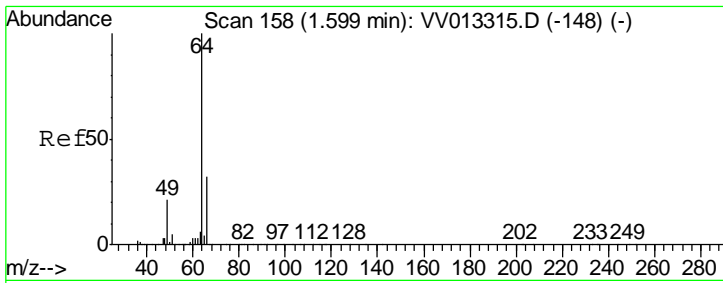
Tgt Ion: 62 Resp: 253175
 Ion Ratio Lower Upper
 62 100
 64 32.5 22.9 42.5



#6
 Bromomethane
 Concen: 4.896 ug/L
 RT: 1.54 min Scan# 139
 Delta R.T. 0.00 min
 Lab File: VV013341.D
 Acq: 25 Oct 2019 13:10

Tgt Ion: 94 Resp: 154676
 Ion Ratio Lower Upper
 94 100
 96 95.1 66.2 123.0

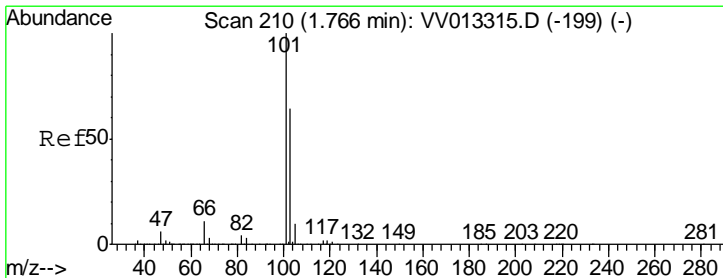
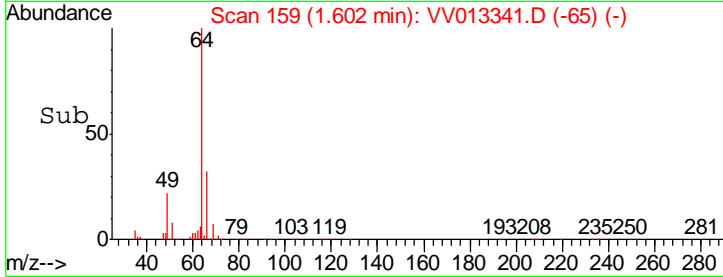
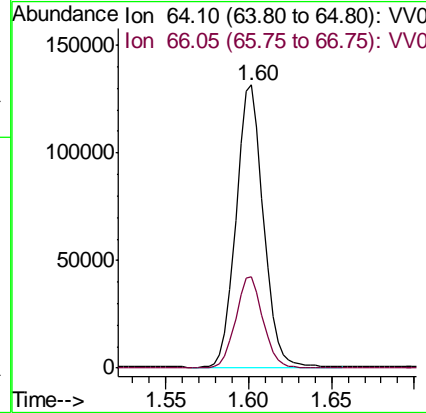
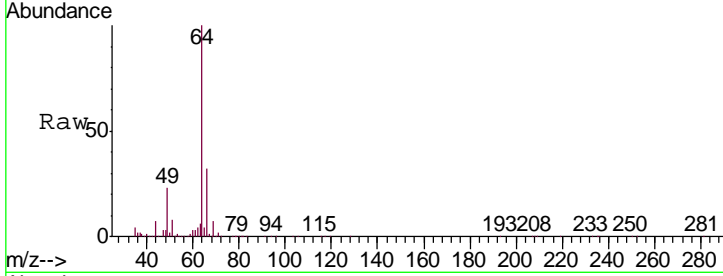




#8
 Chloroethane
 Concen: 4.584 ug/L
 RT: 1.60 min Scan# 159
 Delta R.T. 0.00 min
 Lab File: VV013341.D
 Acq: 25 Oct 2019 13:10

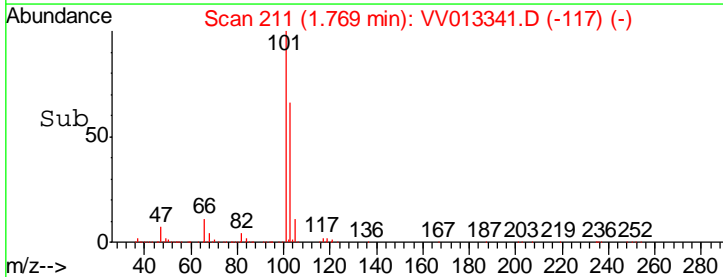
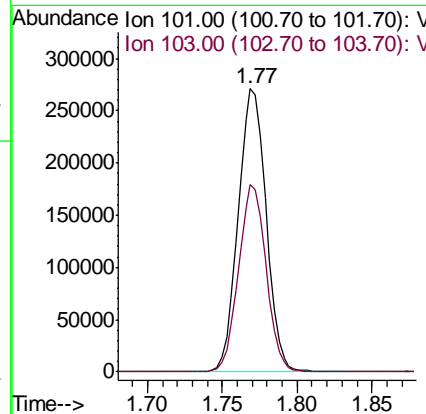
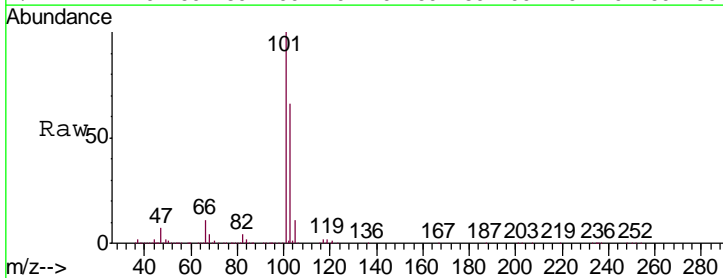
Instrument :
 MSVOA_V
 ClientSampleID :
 VSTD00555

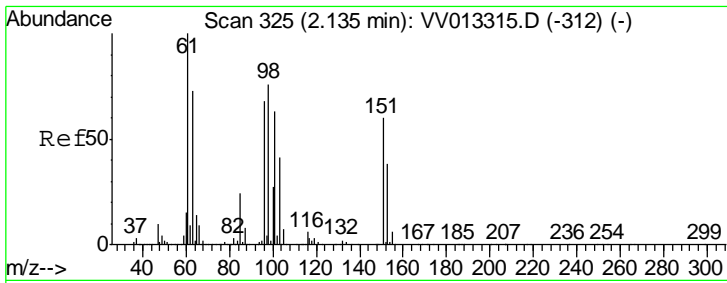
Tgt Ion: 64 Resp: 153205
 Ion Ratio Lower Upper
 64 100
 66 32.2 22.7 42.3



#9
 Trichlorofluoromethane
 Concen: 4.356 ug/L
 RT: 1.77 min Scan# 211
 Delta R.T. 0.00 min
 Lab File: VV013341.D
 Acq: 25 Oct 2019 13:10

Tgt Ion: 101 Resp: 353488
 Ion Ratio Lower Upper
 101 100
 103 65.2 52.8 79.2

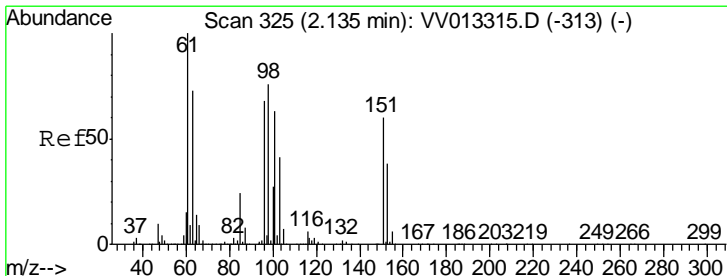
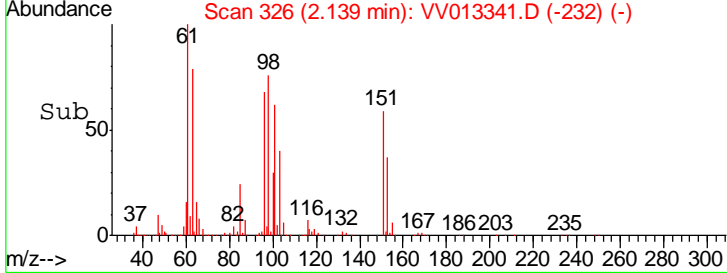
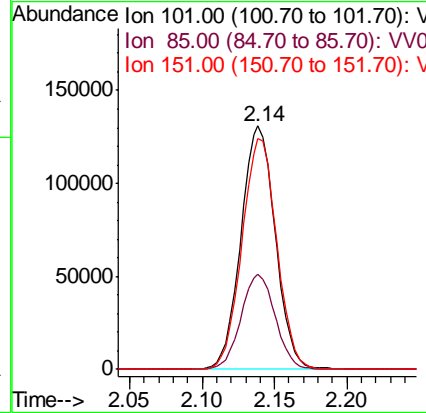
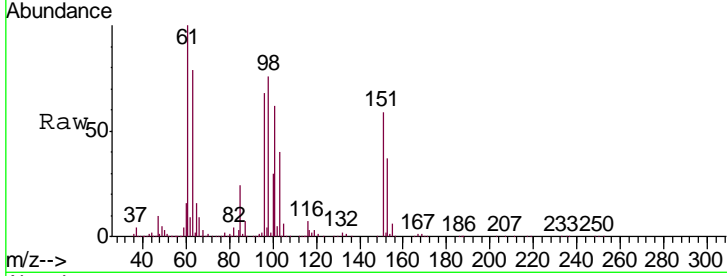




#10
 1,1,2-Trichloro-1,2,2-trifluoroethane
 Concen: 4.502 ug/L
 RT: 2.14 min Scan# 326
 Delta R.T. 0.00 min
 Lab File: VV013341.D
 Acq: 25 Oct 2019 13:10

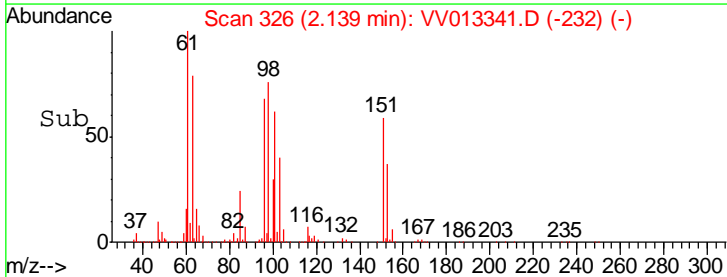
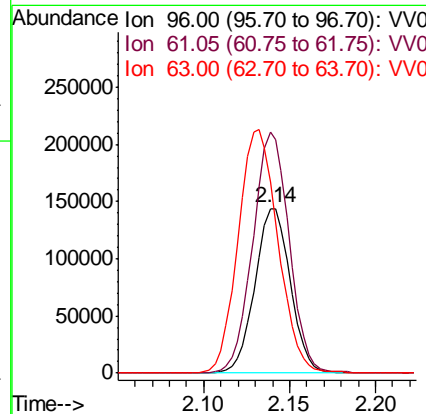
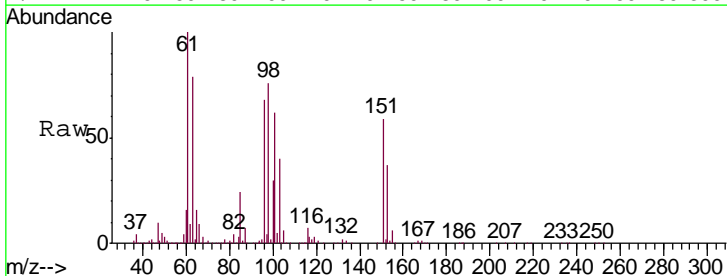
Instrument :
 MSVOA_V
ClientSampled :
 VSTD00555

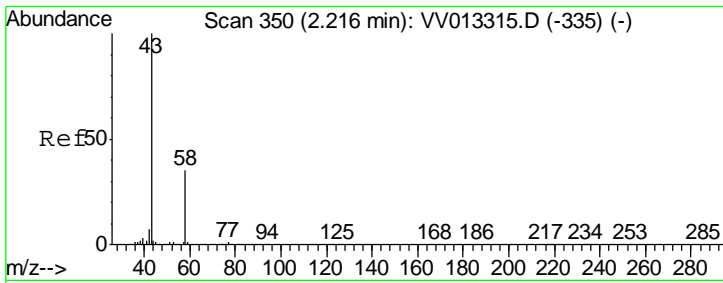
Tgt Ion	Resp	Lower	Upper
101	215892		
101	100		
85	38.8	31.8	47.8
151	95.6	72.9	109.3



#12
 1,1-Dichloroethene
 Concen: 4.488 ug/L
 RT: 2.14 min Scan# 326
 Delta R.T. 0.00 min
 Lab File: VV013341.D
 Acq: 25 Oct 2019 13:10

Tgt Ion	Resp	Lower	Upper
96	205055		
96	100		
61	146.5	104.0	193.1
63	115.8	67.1	124.5

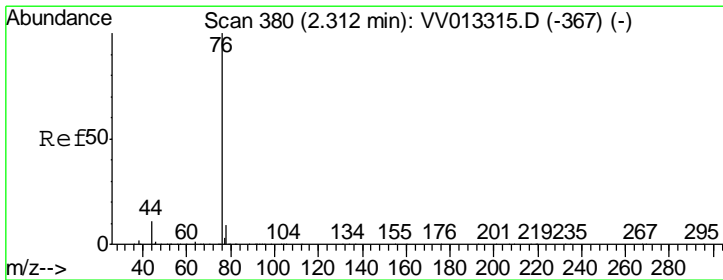
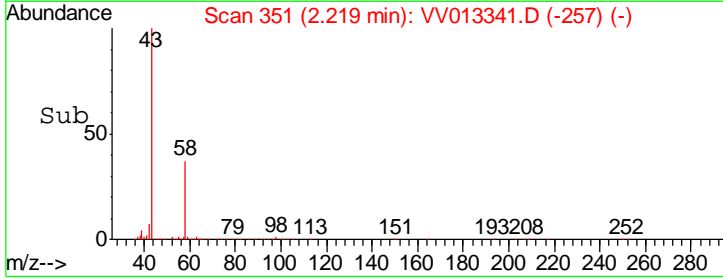
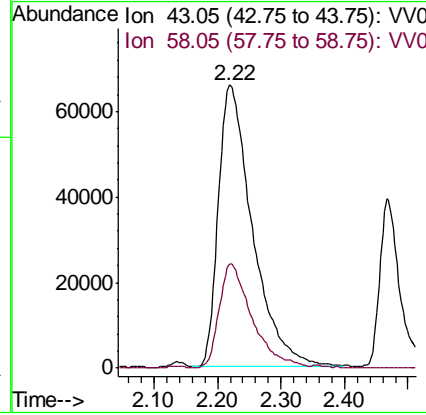
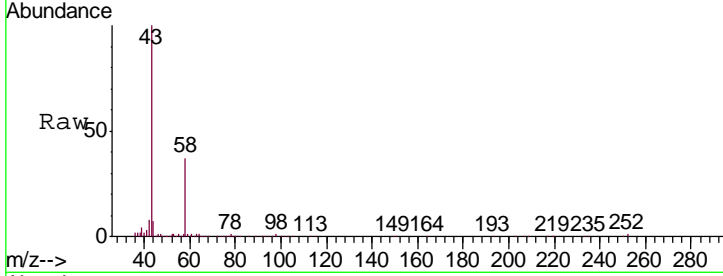




#13
 Acetone
 Concen: 57.663 ug/L
 RT: 2.22 min Scan# 351
 Delta R.T. 0.00 min
 Lab File: VV013341.D
 Acq: 25 Oct 2019 13:10

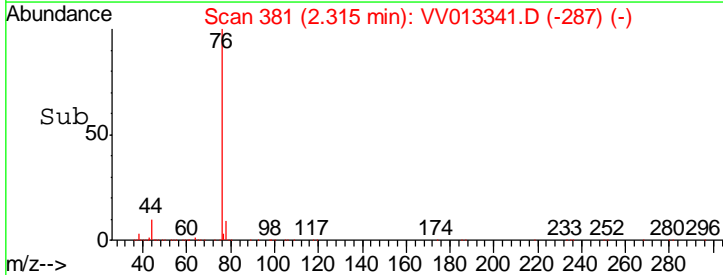
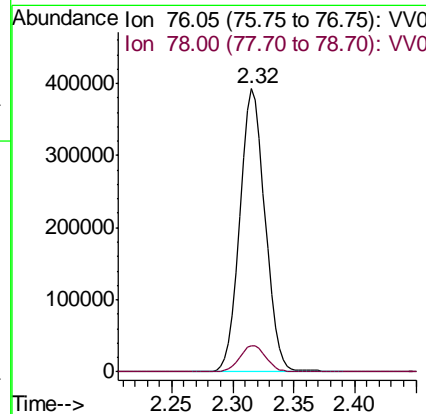
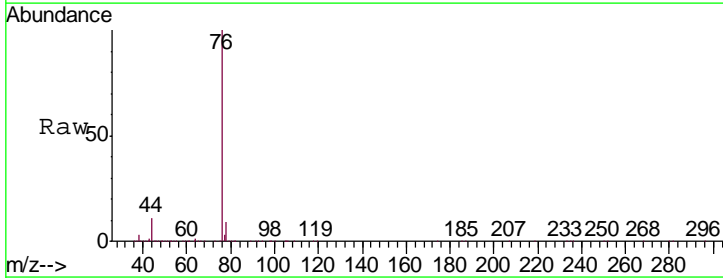
Instrument :
 MSVOA_V
 ClientSampled :
 VSTD00555

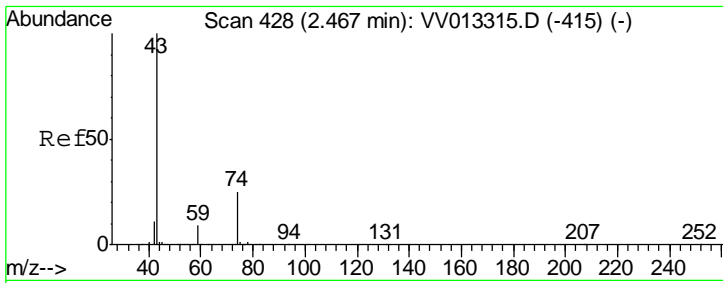
Tgt Ion: 43 Resp: 245287
 Ion Ratio Lower Upper
 43 100
 58 35.9 0.0 26.2#



#14
 Carbon disulfide
 Concen: 4.305 ug/L
 RT: 2.32 min Scan# 381
 Delta R.T. 0.00 min
 Lab File: VV013341.D
 Acq: 25 Oct 2019 13:10

Tgt Ion: 76 Resp: 564634
 Ion Ratio Lower Upper
 76 100
 78 9.4 7.3 10.9

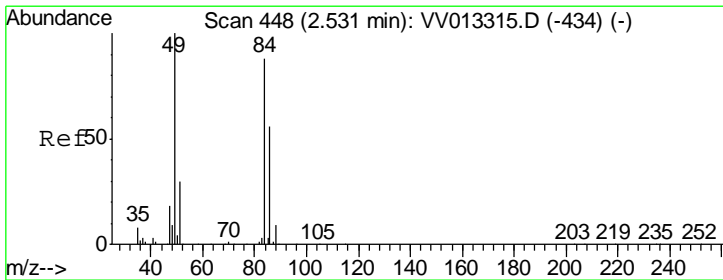
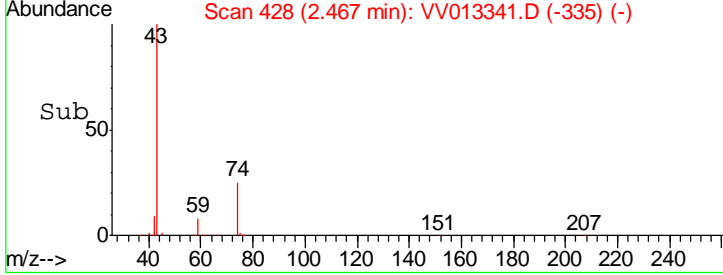
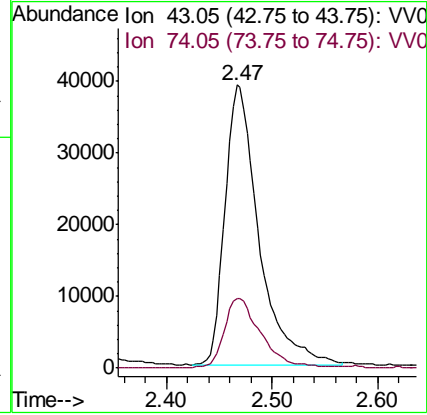
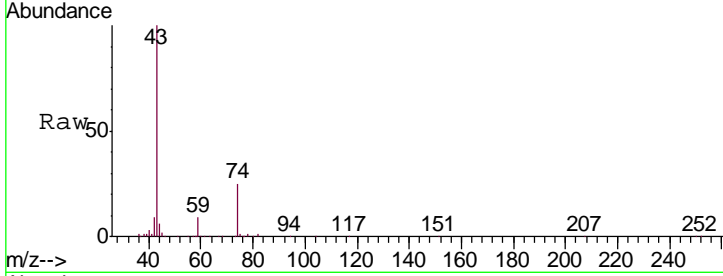




#15
 Methyl Acetate
 Concen: 6.045 ug/L
 RT: 2.47 min Scan# 428
 Delta R.T. -0.00 min
 Lab File: VV013341.D
 Acq: 25 Oct 2019 13:10

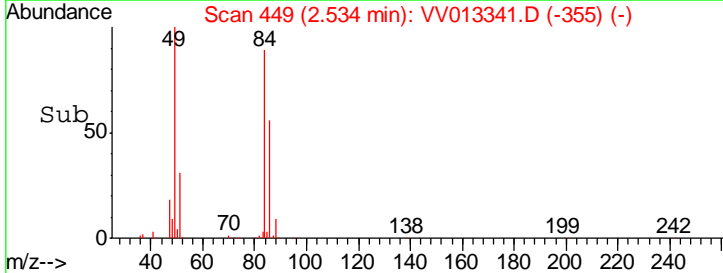
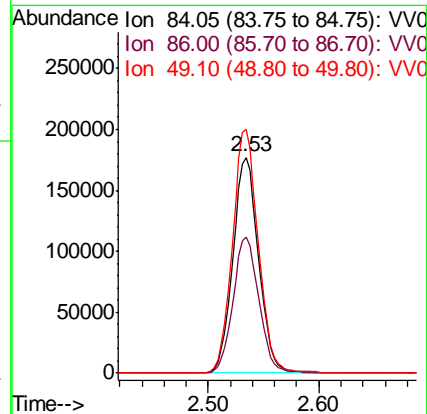
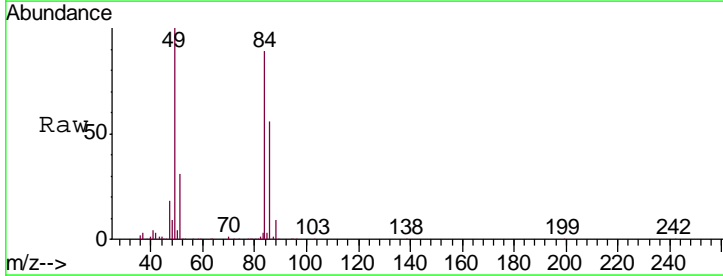
Instrument :
 MSVOA_V
 ClientSampled :
 VSTD00555

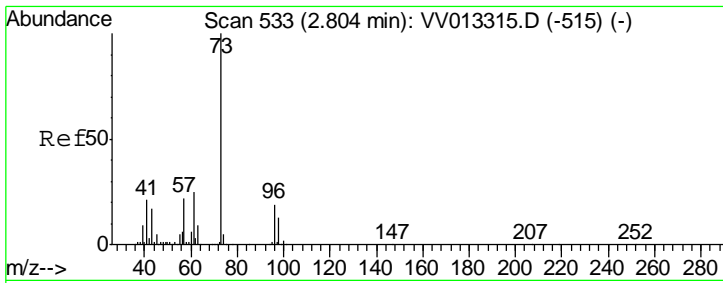
Tgt Ion	Resp	Lower	Upper
43	86959		
74	27.3	20.4	30.6



#16
 Methylene chloride
 Concen: 4.173 ug/L
 RT: 2.53 min Scan# 449
 Delta R.T. 0.00 min
 Lab File: VV013341.D
 Acq: 25 Oct 2019 13:10

Tgt Ion	Resp	Lower	Upper
84	286516		
86	62.9	46.2	85.8
49	112.7	76.4	141.8

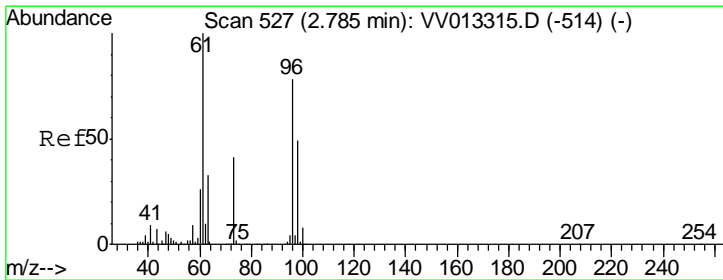
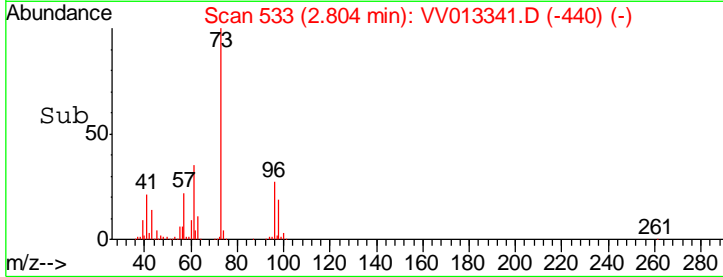
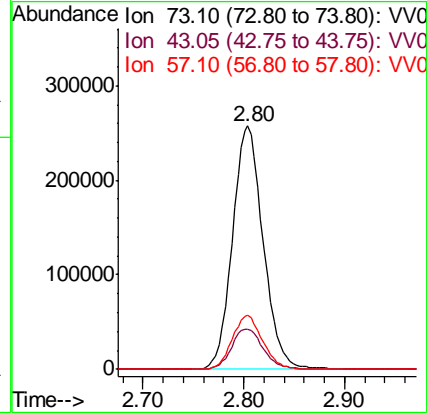
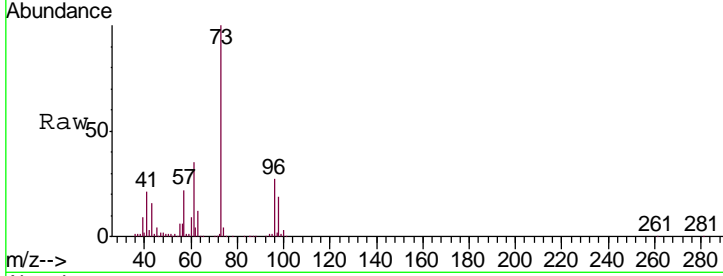




#17
 Methyl tert-butyl Ether
 Concen: 5.145 ug/L
 RT: 2.80 min Scan# 533
 Delta R.T. -0.00 min
 Lab File: VV013341.D
 Acq: 25 Oct 2019 13:10

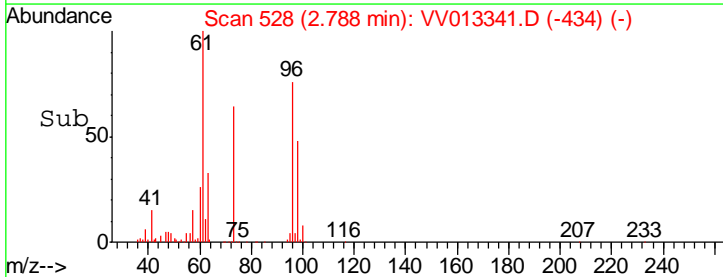
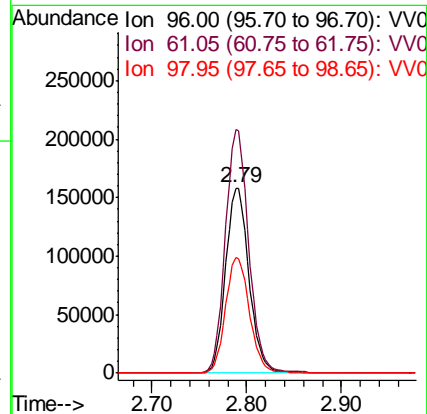
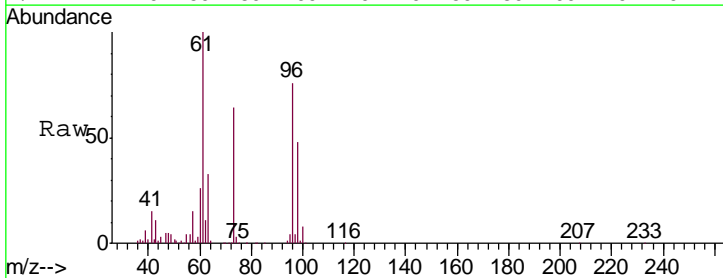
Instrument :
 MSVOA_V
 ClientSampled :
 VSTD00555

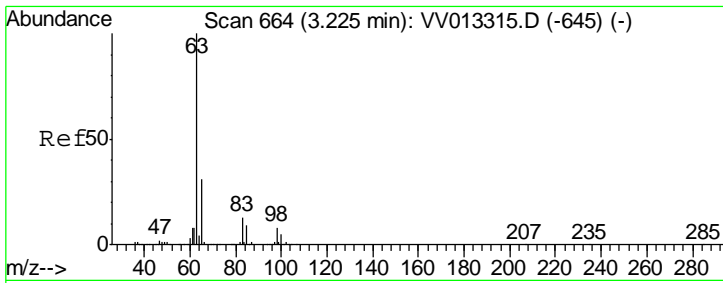
Tgt Ion	Resp	Lower	Upper
73	544333		
43	17.0	13.1	19.7
57	22.1	16.4	24.6



#18
 trans-1,2-Dichloroethene
 Concen: 5.074 ug/L
 RT: 2.79 min Scan# 528
 Delta R.T. 0.00 min
 Lab File: VV013341.D
 Acq: 25 Oct 2019 13:10

Tgt Ion	Resp	Lower	Upper
96	273287		
61	131.5	84.4	156.8
98	62.8	44.4	82.4

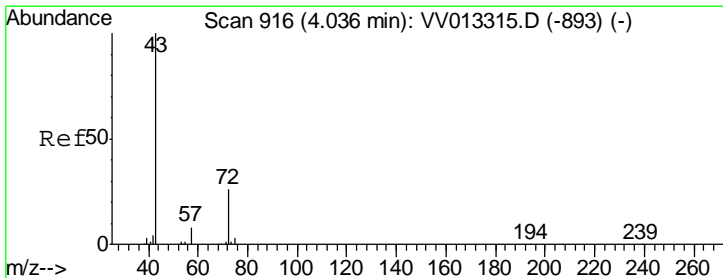
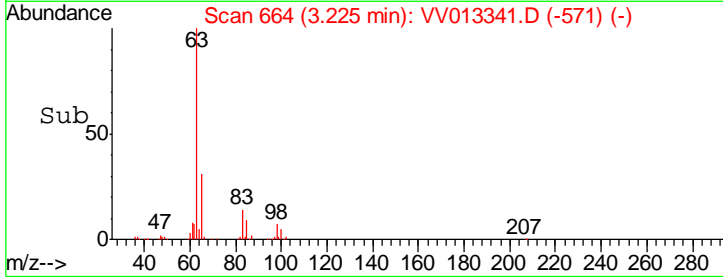
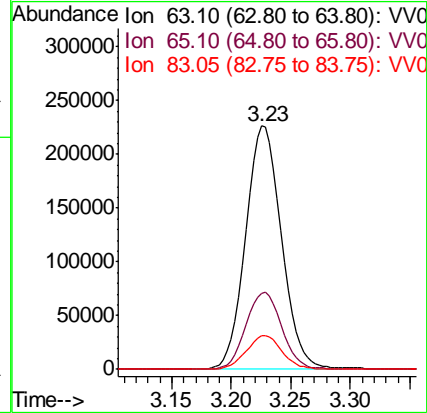
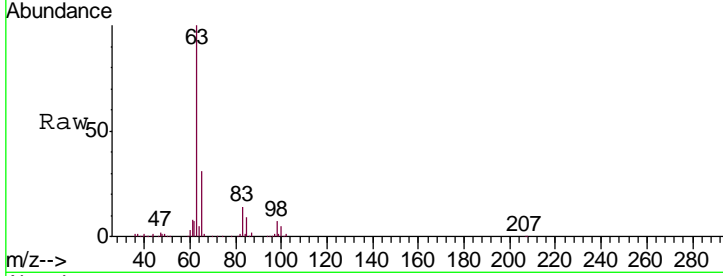




#19
 1,1-Dichloroethane
 Concen: 5.408 ug/L
 RT: 3.23 min Scan# 664
 Delta R.T. -0.00 min
 Lab File: VV013341.D
 Acq: 25 Oct 2019 13:10

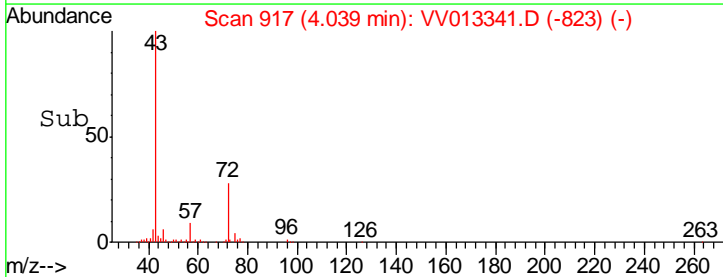
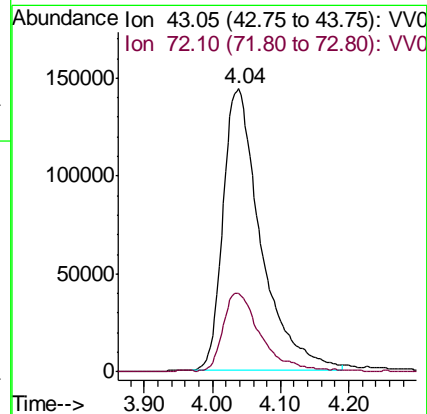
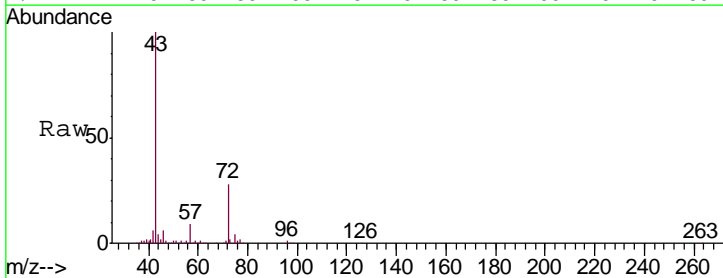
Instrument :
 MSVOA_V
 ClientSampled :
 VSTD00555

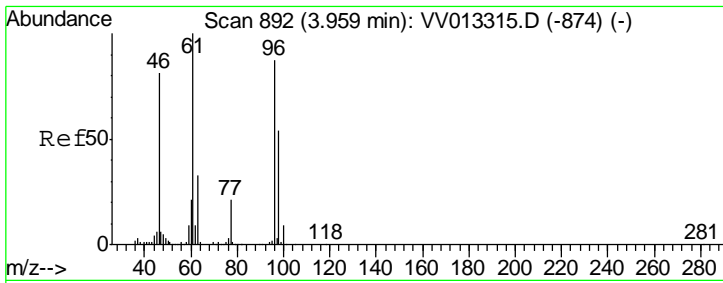
Tgt Ion	Resp	Lower	Upper
63	100		
65	31.3	23.0	42.8
83	13.6	10.2	19.0



#21
 2-Butanone
 Concen: 57.928 ug/L
 RT: 4.04 min Scan# 917
 Delta R.T. 0.00 min
 Lab File: VV013341.D
 Acq: 25 Oct 2019 13:10

Tgt Ion	Resp	Lower	Upper
43	100		
72	27.3	13.1	39.3

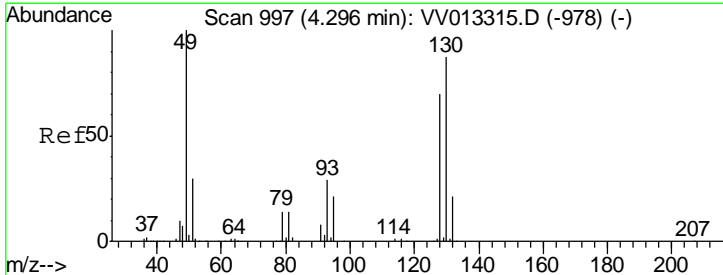
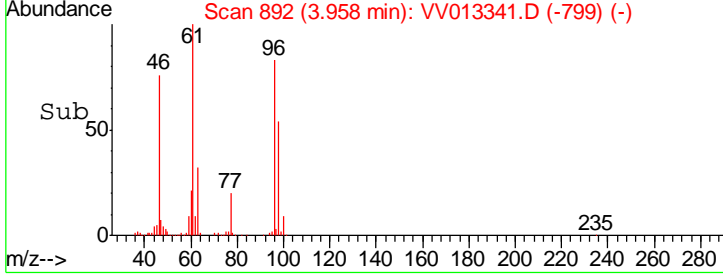
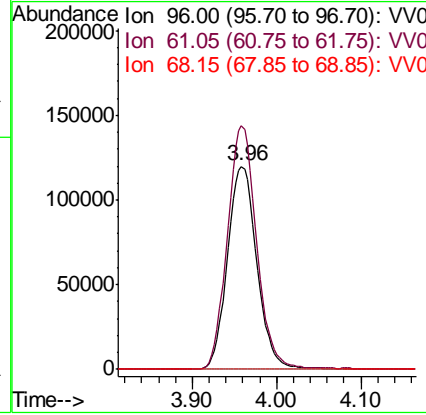
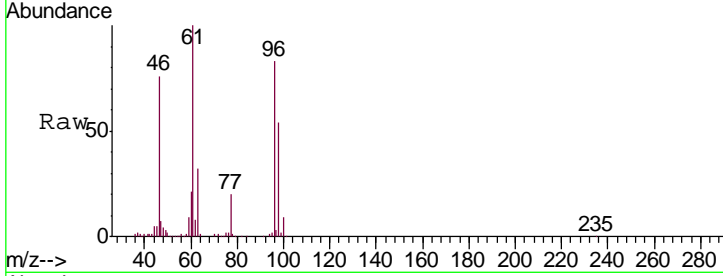




#22
 cis-1,2-Dichloroethene
 Concen: 5.052 ug/L
 RT: 3.96 min Scan# 892
 Delta R.T. -0.00 min
 Lab File: VV013341.D
 Acq: 25 Oct 2019 13:10

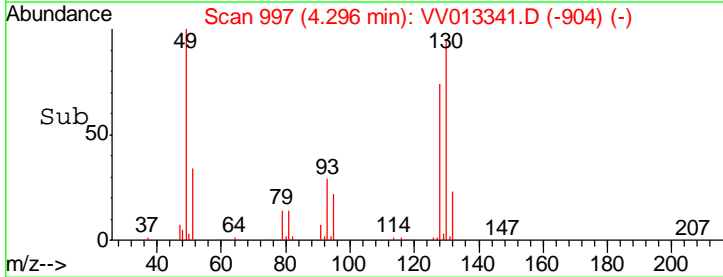
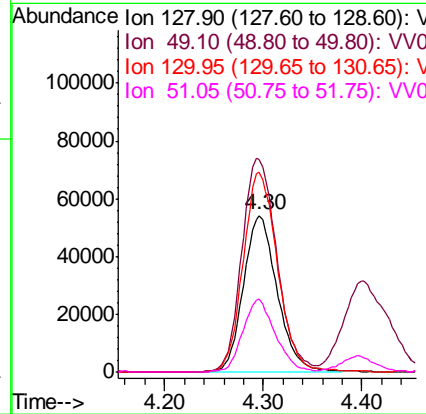
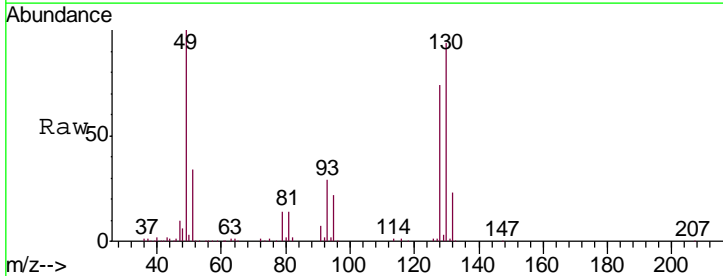
Instrument : MSVOA_V
 ClientSampled : VSTD00555

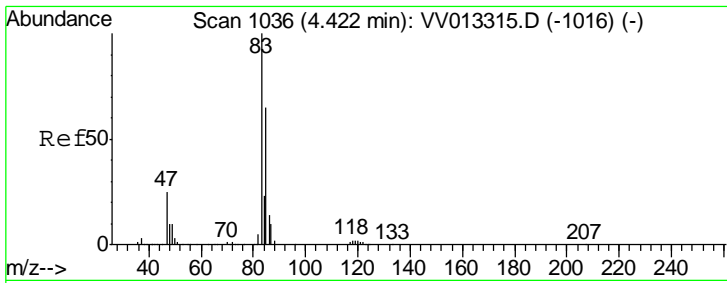
Tgt Ion	Resp	Lower	Upper
96	291216		
61	120.0	77.3	143.7
68	0.0	0.1	0.1#



#23
 Bromochloromethane
 Concen: 4.693 ug/L
 RT: 4.30 min Scan# 997
 Delta R.T. -0.00 min
 Lab File: VV013341.D
 Acq: 25 Oct 2019 13:10

Tgt Ion	Resp	Lower	Upper
128	128374		
49	136.0	109.9	204.1
130	127.6	88.7	164.7
51	46.3	39.3	58.9

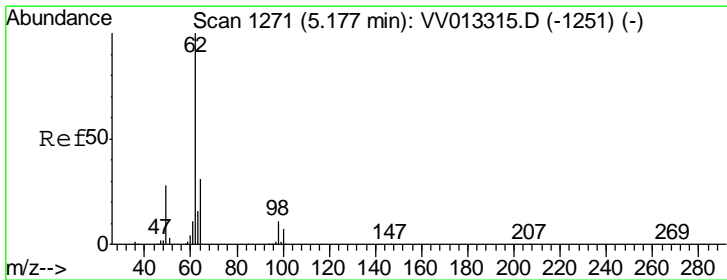
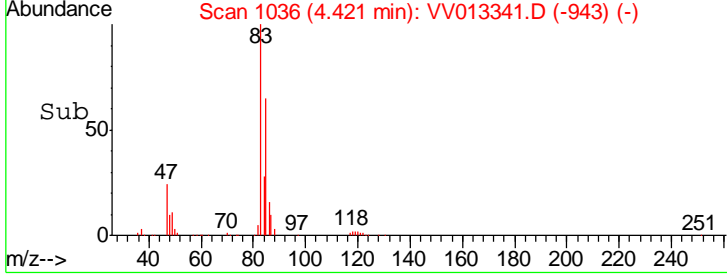
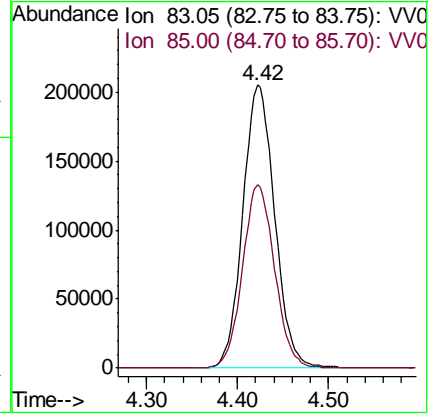
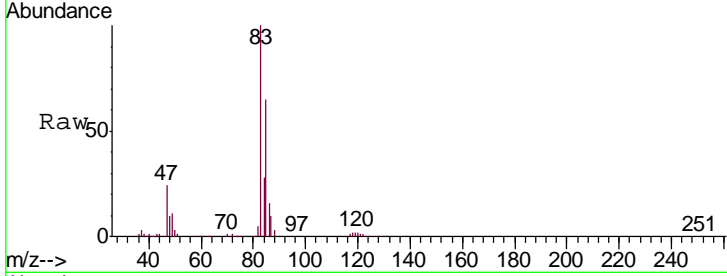




#25
 Chloroform
 Concen: 4.382 ug/L
 RT: 4.42 min Scan# 1036
 Delta R.T. -0.00 min
 Lab File: VV013341.D
 Acq: 25 Oct 2019 13:10

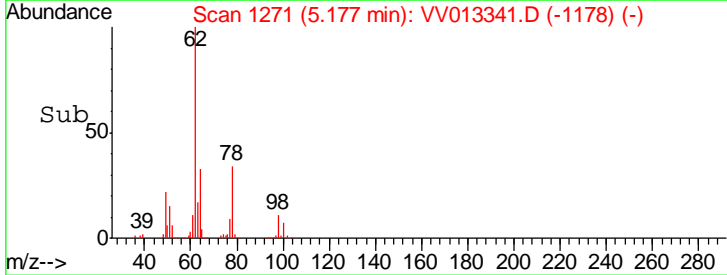
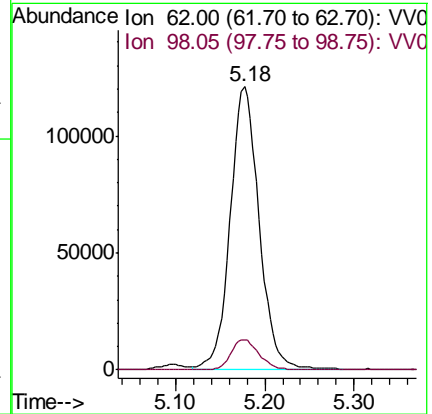
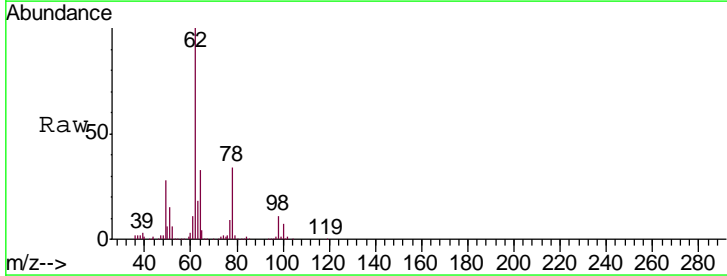
Instrument :
 MSVOA_V
 ClientSampled :
 VSTD00555

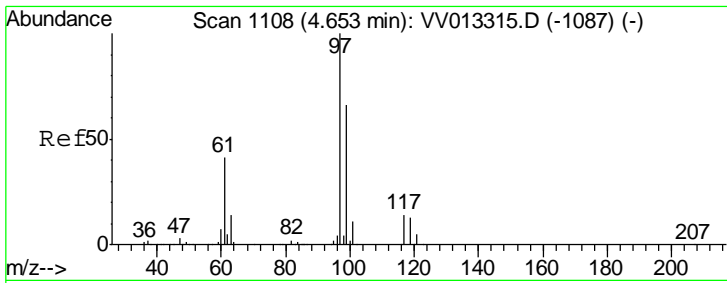
Tgt Ion: 83 Resp: 500098
 Ion Ratio Lower Upper
 83 100
 85 64.7 45.7 84.9



#27
 1,2-Dichloroethane
 Concen: 4.445 ug/L
 RT: 5.18 min Scan# 1271
 Delta R.T. -0.00 min
 Lab File: VV013341.D
 Acq: 25 Oct 2019 13:10

Tgt Ion: 62 Resp: 270894
 Ion Ratio Lower Upper
 62 100
 98 10.8 8.3 12.5

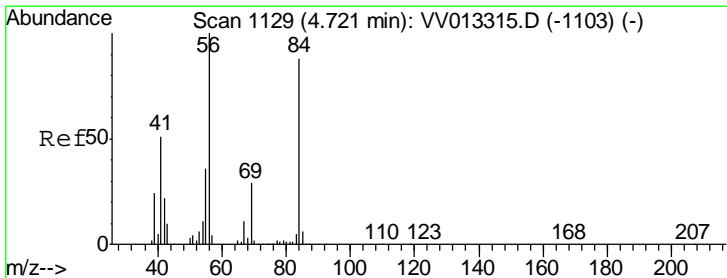
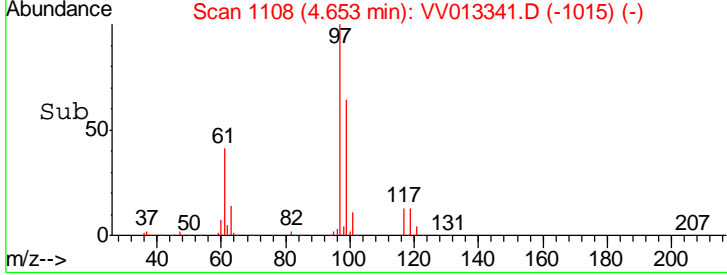
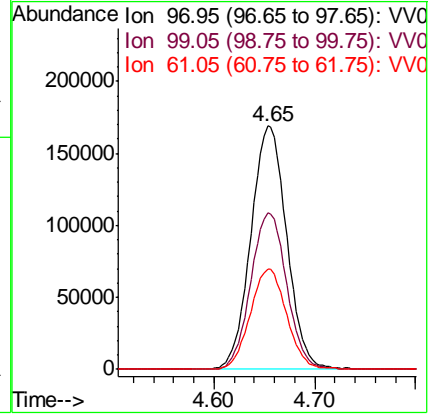
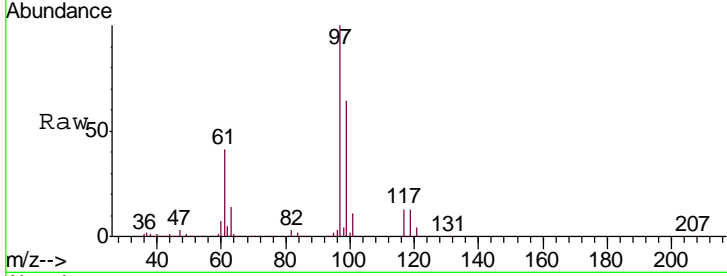




#29
 1,1,1-Trichloroethane
 Concen: 4.620 ug/L
 RT: 4.65 min Scan# 1108
 Delta R.T. -0.00 min
 Lab File: VV013341.D
 Acq: 25 Oct 2019 13:10

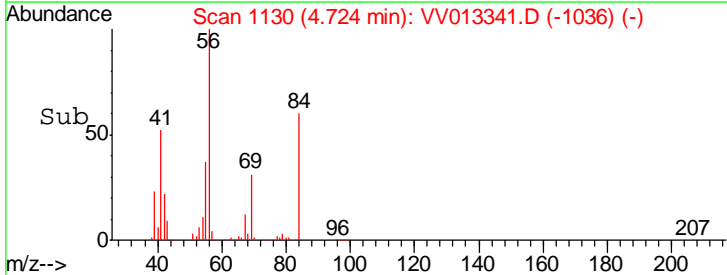
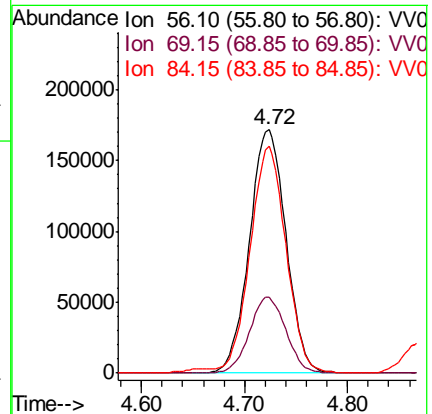
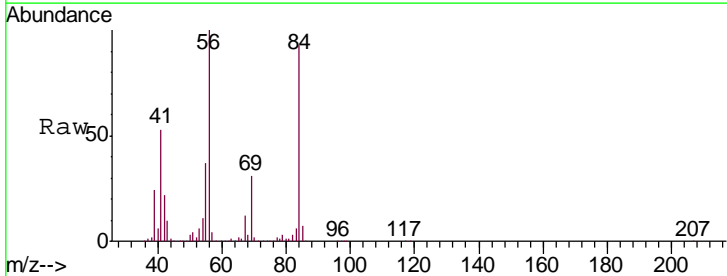
Instrument :
 MSVOA_V
 ClientSampled :
 VSTD00555

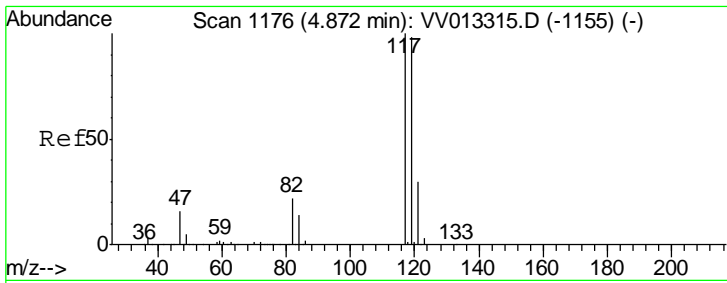
Tgt Ion	Resp	Lower	Upper
97	415547		
99	64.5	51.7	77.5
61	42.1	34.3	51.5



#30
 Cyclohexane
 Concen: 4.527 ug/L
 RT: 4.72 min Scan# 1130
 Delta R.T. 0.00 min
 Lab File: VV013341.D
 Acq: 25 Oct 2019 13:10

Tgt Ion	Resp	Lower	Upper
56	422691		
69	31.0	24.6	37.0
84	91.8	71.0	106.6

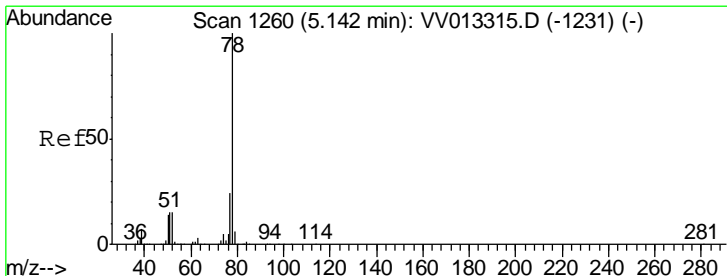
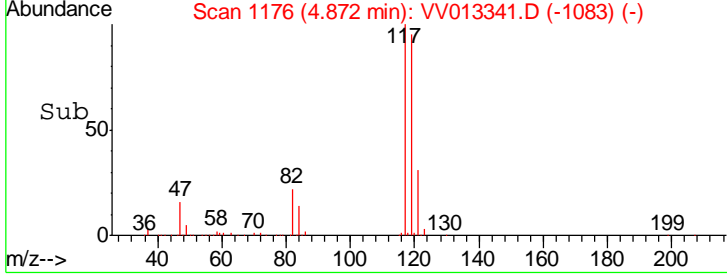
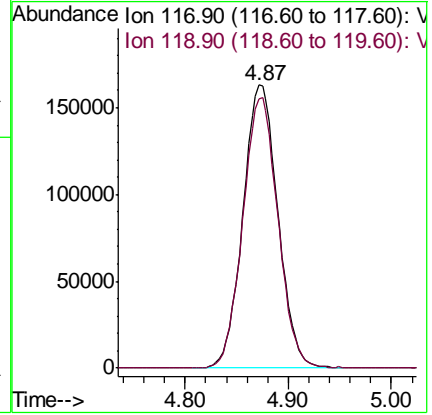
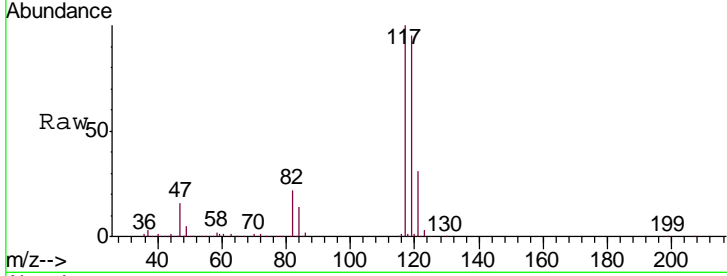




#31
 Carbon tetrachloride
 Concen: 4.763 ug/L
 RT: 4.87 min Scan# 1176
 Delta R.T. -0.00 min
 Lab File: VV013341.D
 Acq: 25 Oct 2019 13:10

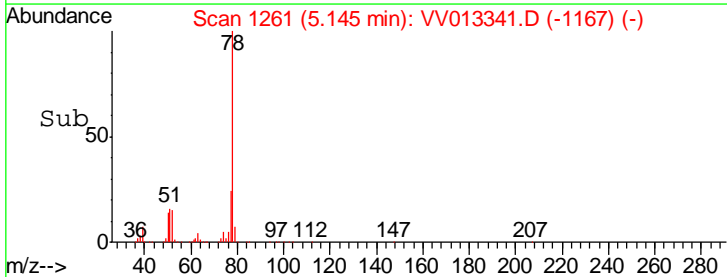
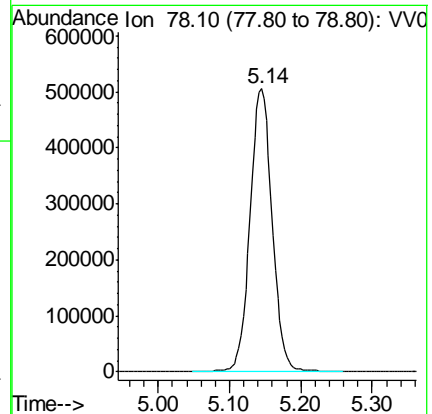
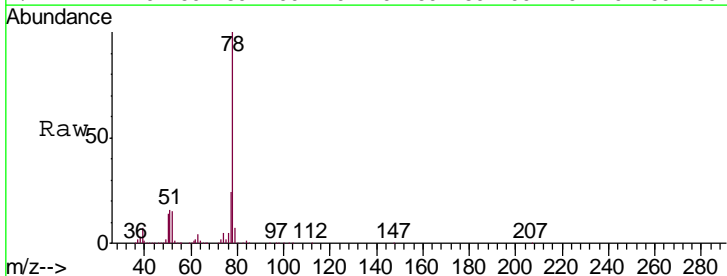
Instrument : MSVOA_V
 ClientSampled : VSTD00555

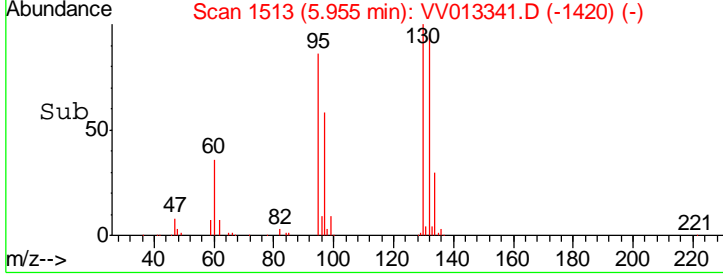
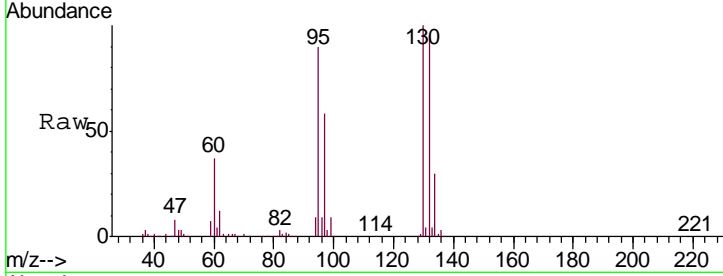
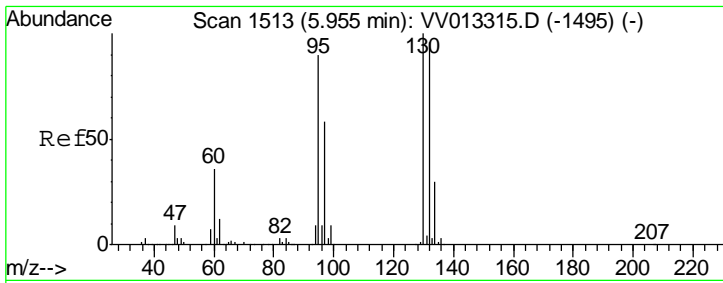
Tgt Ion: 117 Resp: 384382
 Ion Ratio Lower Upper
 117 100
 119 96.0 77.4 116.0



#33
 Benzene
 Concen: 4.720 ug/L
 RT: 5.14 min Scan# 1261
 Delta R.T. 0.00 min
 Lab File: VV013341.D
 Acq: 25 Oct 2019 13:10

Tgt Ion: 78 Resp: 1096881



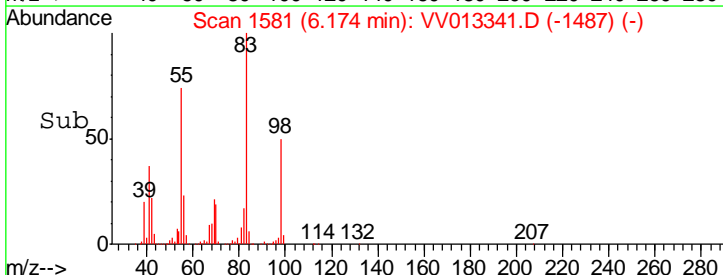
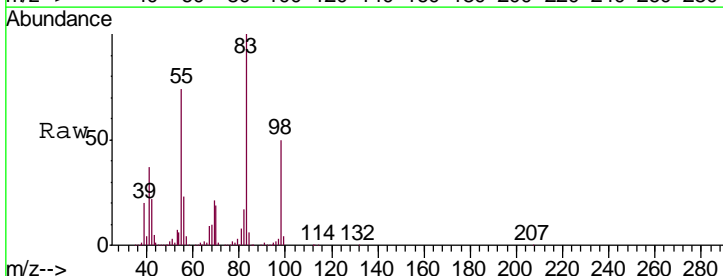
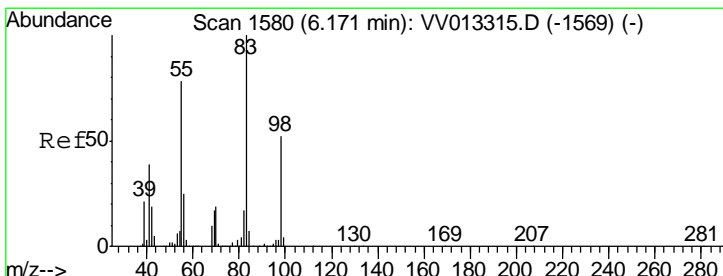
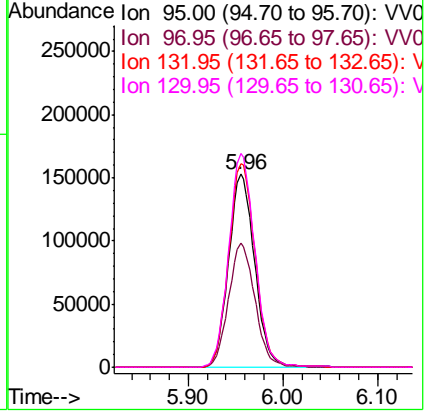


#34
 Trichloroethene
 Concen: 4.707 ug/L
 RT: 5.96 min Scan# 1513
 Delta R.T. -0.00 min
 Lab File: VV013341.D
 Acq: 25 Oct 2019 13:10

Instrument : MSVOA_V
 ClientSampled : VSTD00555

Tgt Ion: 95 Resp: 293494

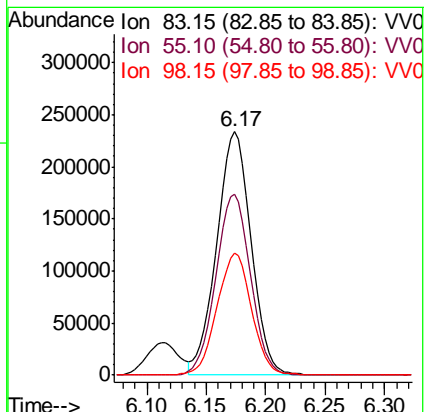
Ion	Ratio	Lower	Upper
95	100		
97	64.2	45.2	84.0
132	105.4	70.6	131.2
130	110.7	75.5	140.3

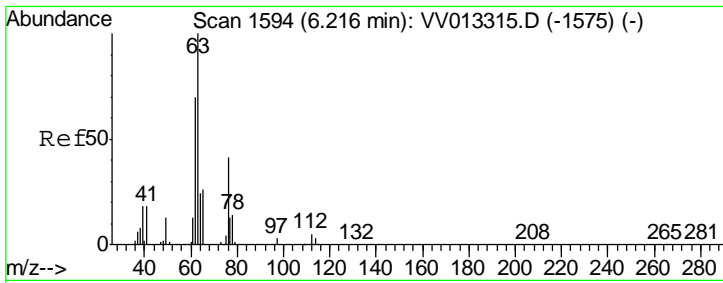


#35
 Methylcyclohexane
 Concen: 4.895 ug/L
 RT: 6.17 min Scan# 1581
 Delta R.T. 0.00 min
 Lab File: VV013341.D
 Acq: 25 Oct 2019 13:10

Tgt Ion: 83 Resp: 469626

Ion	Ratio	Lower	Upper
83	100		
55	74.5	62.4	93.6
98	49.9	39.2	58.8

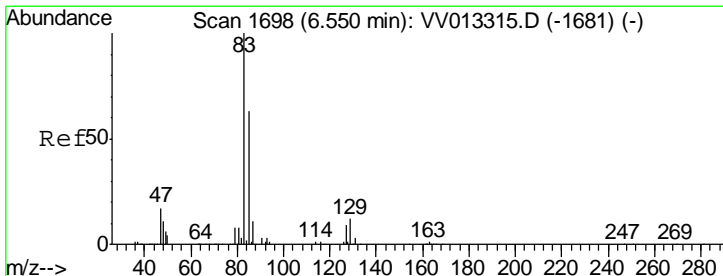
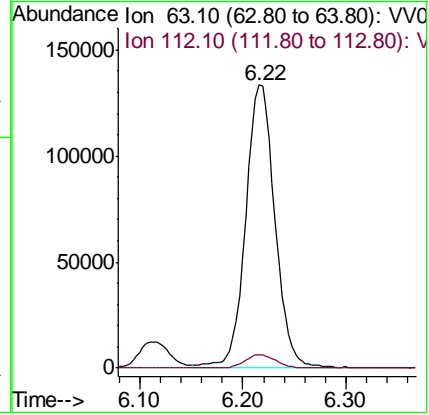
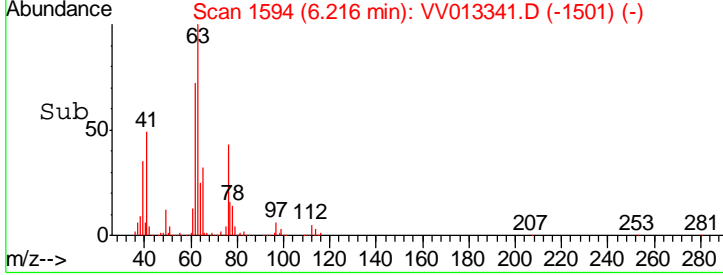
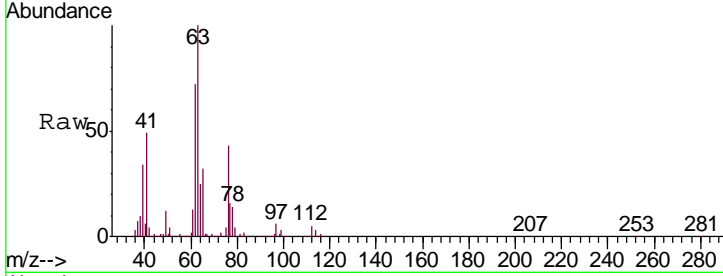




#37
 1,2-Dichloropropane
 Concen: 4.640 ug/L
 RT: 6.22 min Scan# 1594
 Delta R.T. -0.00 min
 Lab File: VV013341.D
 Acq: 25 Oct 2019 13:10

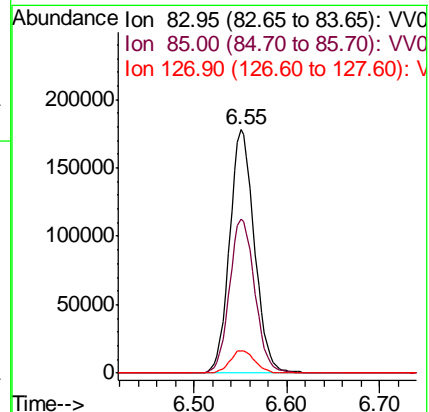
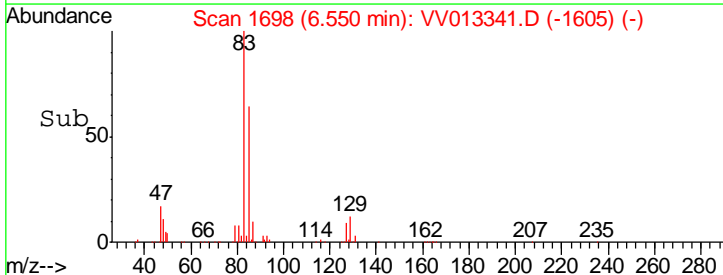
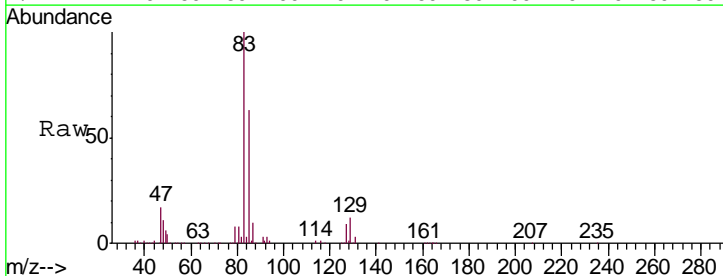
Instrument : MSVOA_V
 ClientSampled : VSTD00555

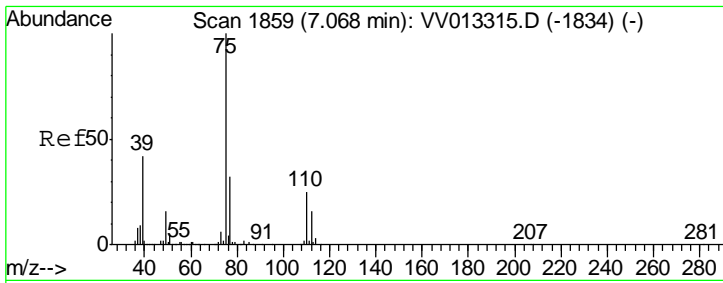
Tgt Ion	Resp	Lower	Upper
63	100		
112	5.1	4.1	6.1



#38
 Bromodichloromethane
 Concen: 4.518 ug/L
 RT: 6.55 min Scan# 1698
 Delta R.T. -0.00 min
 Lab File: VV013341.D
 Acq: 25 Oct 2019 13:10

Tgt Ion	Resp	Lower	Upper
83	100		
85	63.5	44.4	82.5
127	9.4	6.6	10.0

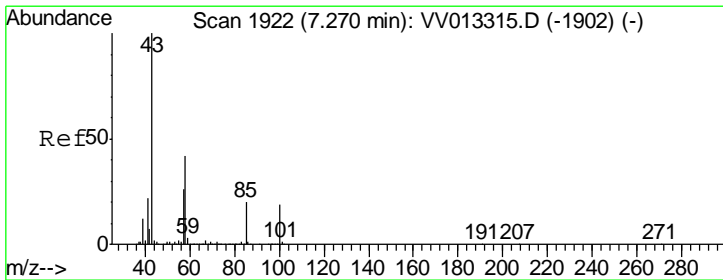
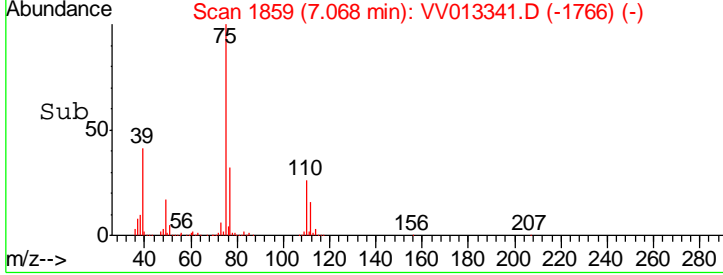
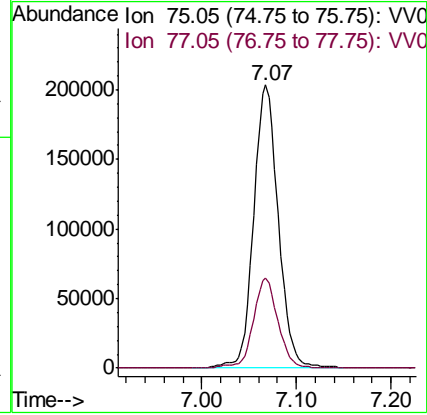
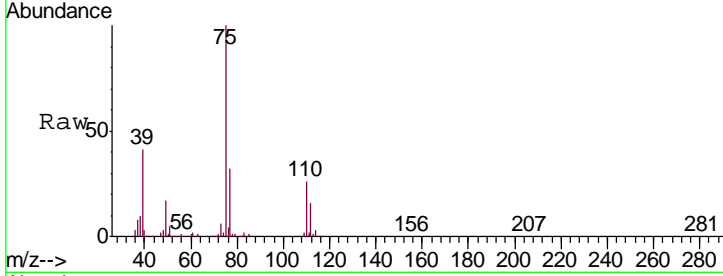




#39
 cis-1,3-Dichloropropene
 Concen: 4.641 ug/L
 RT: 7.07 min Scan# 1859
 Delta R.T. -0.00 min
 Lab File: VV013341.D
 Acq: 25 Oct 2019 13:10

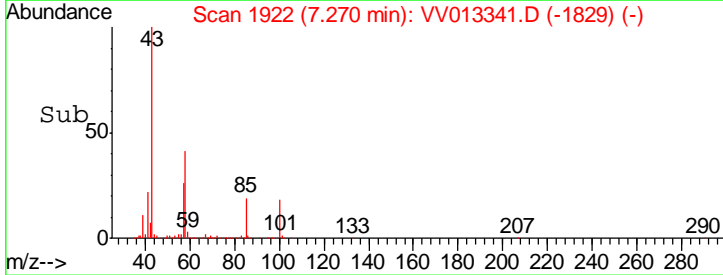
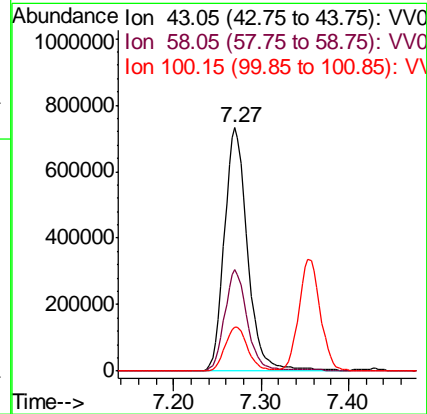
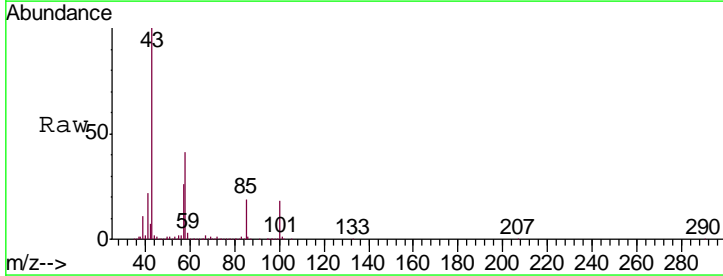
Instrument : MSVOA_V
 ClientSampled : VSTD00555

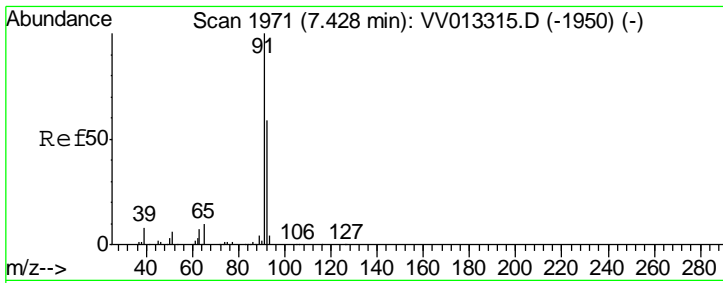
Tgt Ion	Resp	Lower	Upper
75	368965		
77	31.8	22.6	42.0



#40
 4-Methyl-2-pentanone
 Concen: 46.803 ug/L
 RT: 7.27 min Scan# 1922
 Delta R.T. -0.00 min
 Lab File: VV013341.D
 Acq: 25 Oct 2019 13:10

Tgt Ion	Resp	Lower	Upper
43	1350432		
58	40.5	30.7	46.1
100	17.7	12.4	18.6

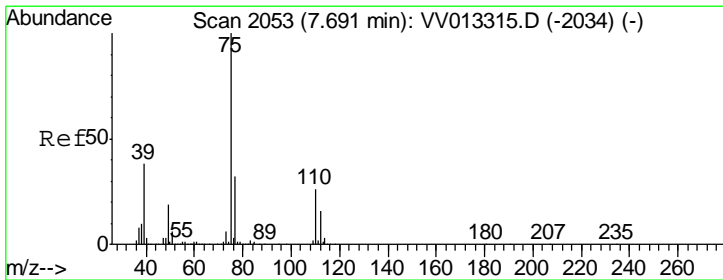
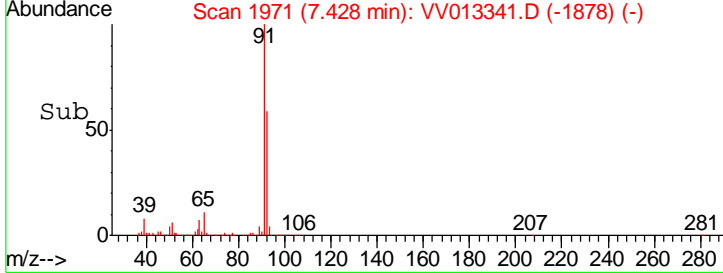
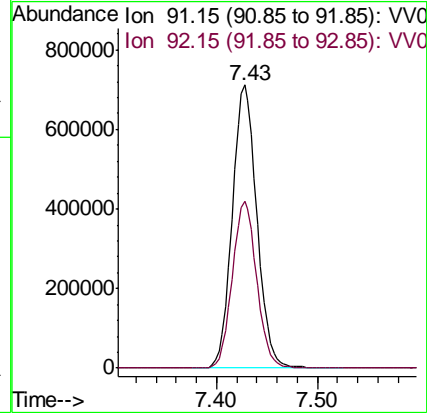
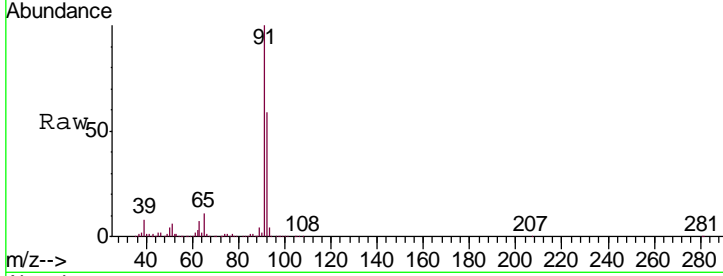




#42
 Toluene
 Concen: 4.958 ug/L
 RT: 7.43 min Scan# 1971
 Delta R.T. -0.00 min
 Lab File: VV013341.D
 Acq: 25 Oct 2019 13:10

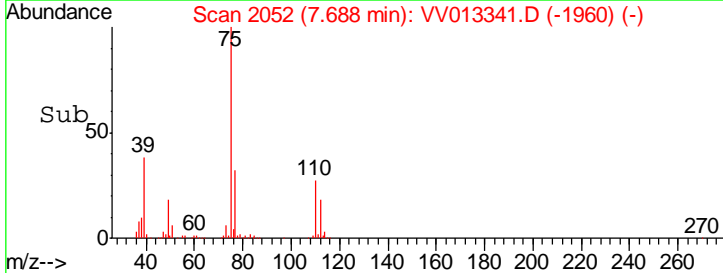
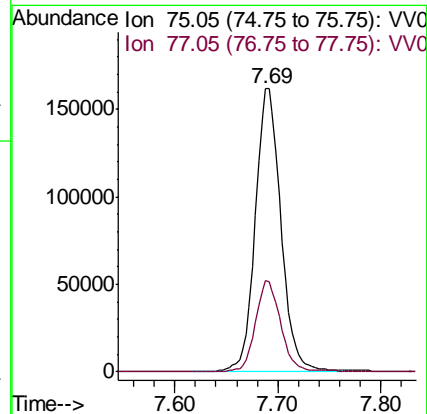
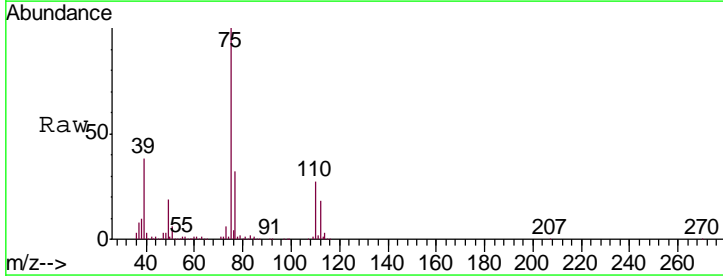
Instrument :
 MSVOA_V
 ClientSampled :
 VSTD00555

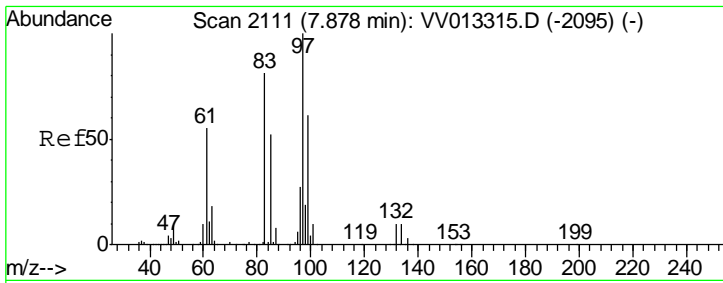
Tgt Ion: 91 Resp: 1209699
 Ion Ratio Lower Upper
 91 100
 92 59.0 40.5 75.1



#44
 trans-1,3-Dichloropropene
 Concen: 4.632 ug/L
 RT: 7.69 min Scan# 2052
 Delta R.T. -0.00 min
 Lab File: VV013341.D
 Acq: 25 Oct 2019 13:10

Tgt Ion: 75 Resp: 278954
 Ion Ratio Lower Upper
 75 100
 77 32.2 21.8 40.6

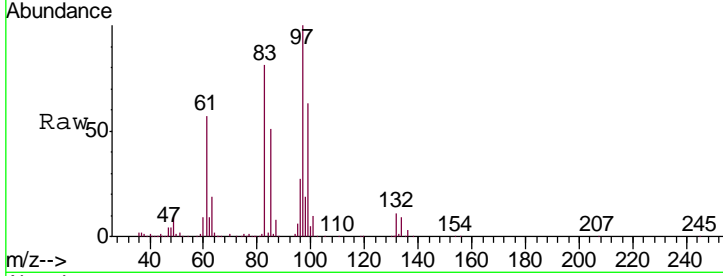




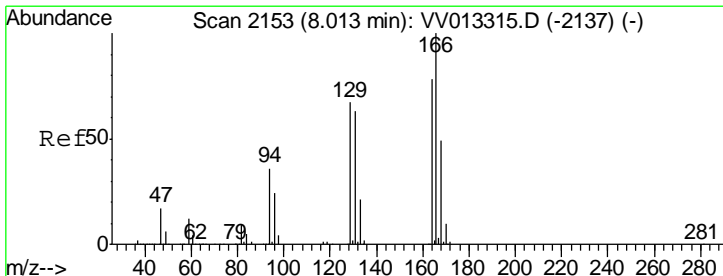
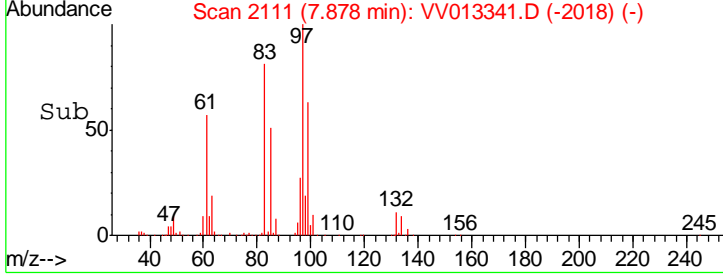
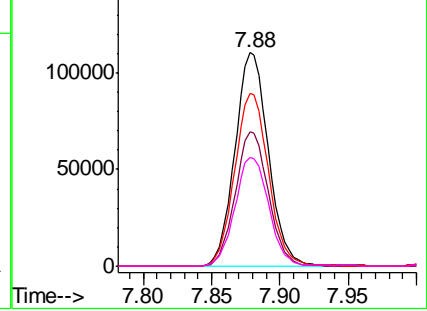
#45
 1,1,2-Trichloroethane
 Concen: 4.774 ug/L
 RT: 7.88 min Scan# 2111
 Delta R.T. -0.00 min
 Lab File: VV013341.D
 Acq: 25 Oct 2019 13:10

Instrument :
 MSVOA_V
 ClientSampleId :
 VSTD00555

Tgt Ion	Resp	Lower	Upper
97	188086		
97	100		
99	63.1	42.2	78.4
83	81.1	58.4	108.4
85	51.2	37.0	68.6

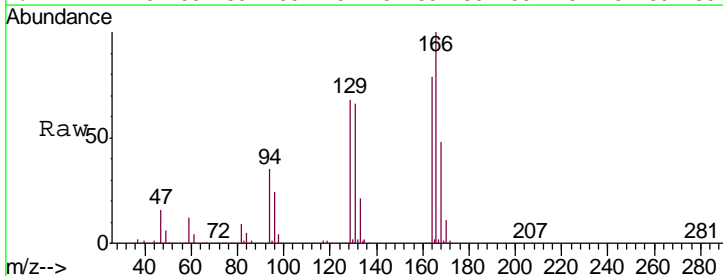


Abundance Ion 96.95 (96.65 to 97.65): VV013341.D (-2018) (-)
 Ion 99.05 (98.75 to 99.75): VV013341.D (-2018) (-)
 Ion 82.95 (82.65 to 83.65): VV013341.D (-2018) (-)
 Ion 85.00 (84.70 to 85.70): VV013341.D (-2018) (-)

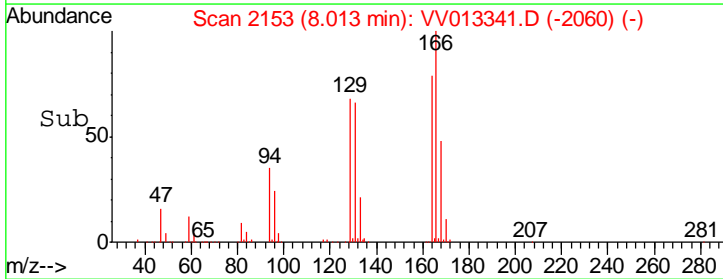
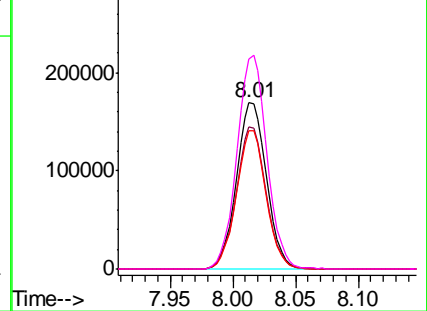


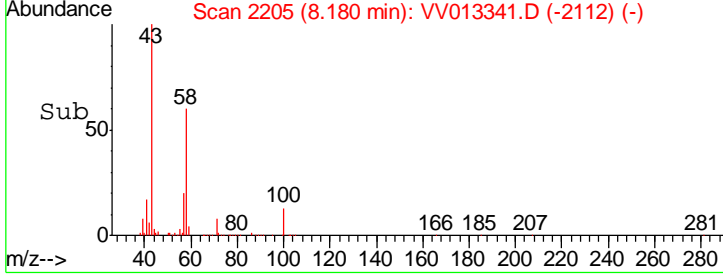
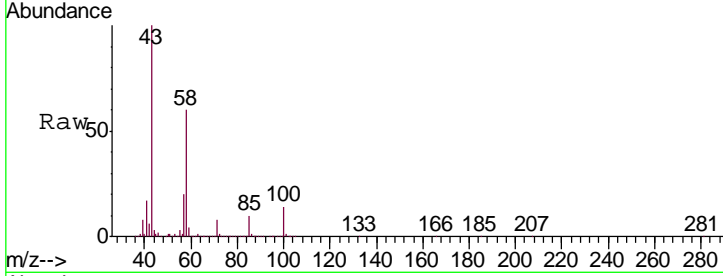
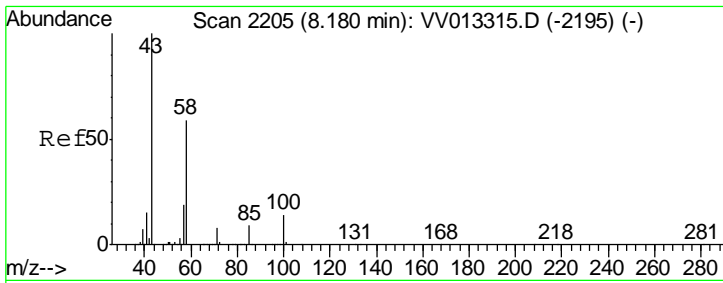
#47
 Tetrachloroethene
 Concen: 4.973 ug/L
 RT: 8.01 min Scan# 2153
 Delta R.T. -0.00 min
 Lab File: VV013341.D
 Acq: 25 Oct 2019 13:10

Tgt Ion	Resp	Lower	Upper
164	281563		
164	100		
129	85.8	61.0	113.2
131	83.3	57.5	106.9
166	126.3	87.8	163.0



Abundance Ion 163.90 (163.60 to 164.60): VV013341.D (-2060) (-)
 Ion 128.95 (128.65 to 129.65): VV013341.D (-2060) (-)
 Ion 130.95 (130.65 to 131.65): VV013341.D (-2060) (-)
 Ion 165.90 (165.60 to 166.60): VV013341.D (-2060) (-)



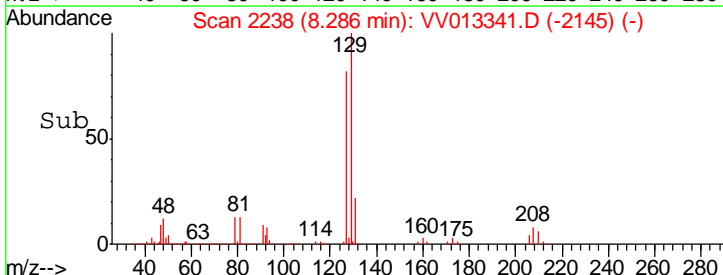
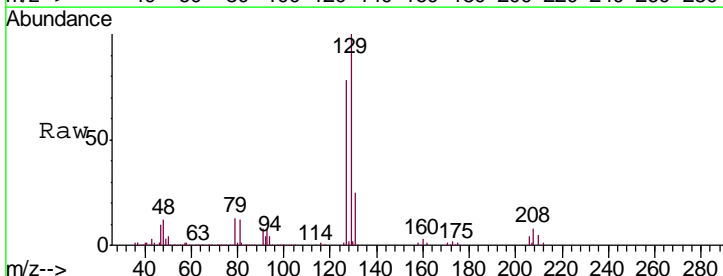
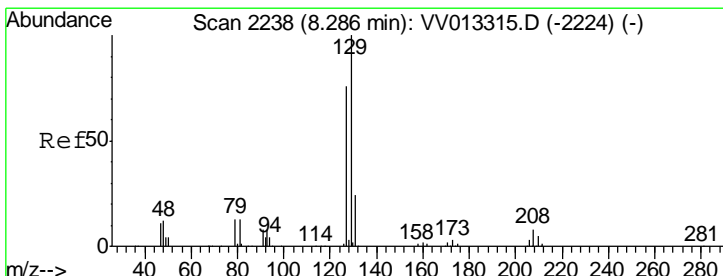
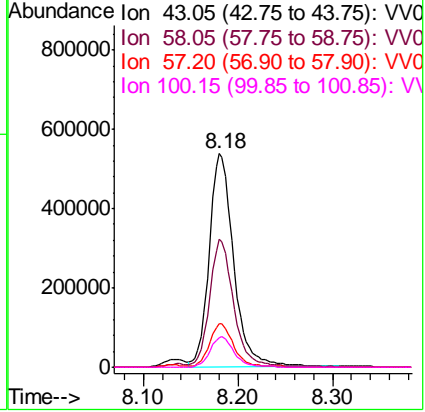


#48
 2-Hexanone
 Concen: 46.766 ug/L
 RT: 8.18 min Scan# 2205
 Delta R.T. -0.00 min
 Lab File: VV013341.D
 Acq: 25 Oct 2019 13:10

Instrument :
 MSVOA_V
 ClientSampled :
 VSTD00555

Tgt Ion: 43 Resp: 963268

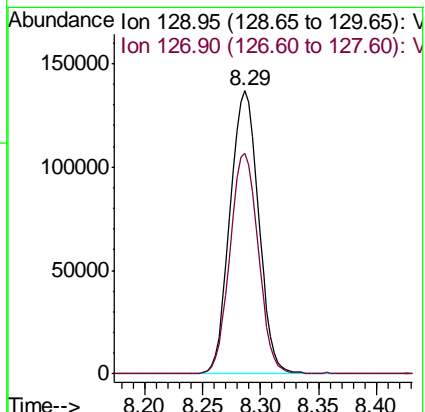
Ion	Ratio	Lower	Upper
43	100		
58	59.1	45.1	67.7
57	20.0	15.5	23.3
100	14.0	10.2	15.2

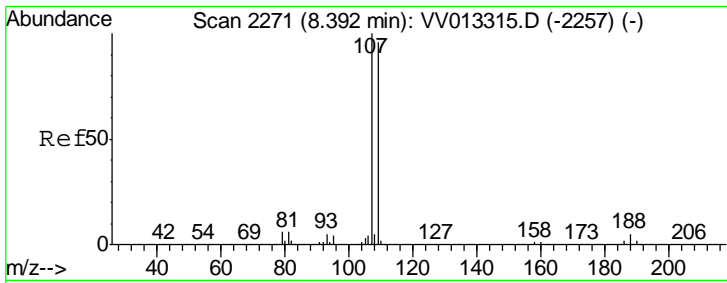


#49
 Dibromochloromethane
 Concen: 4.687 ug/L
 RT: 8.29 min Scan# 2238
 Delta R.T. -0.00 min
 Lab File: VV013341.D
 Acq: 25 Oct 2019 13:10

Tgt Ion: 129 Resp: 232615

Ion	Ratio	Lower	Upper
129	100		
127	78.1	54.1	100.5

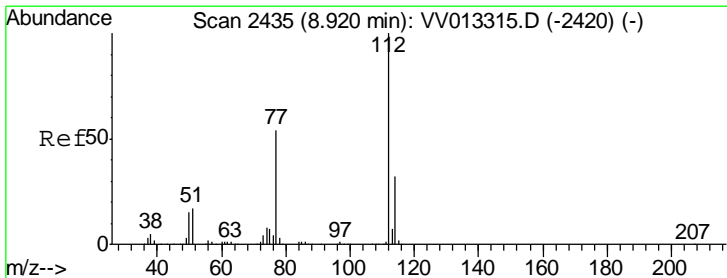
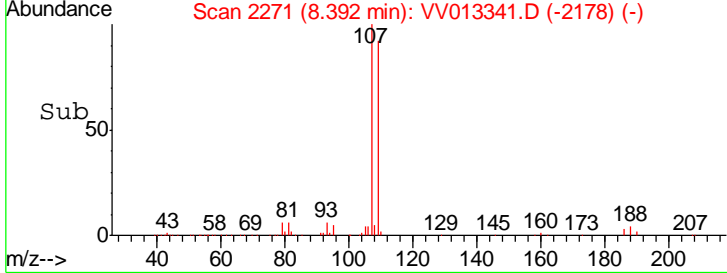
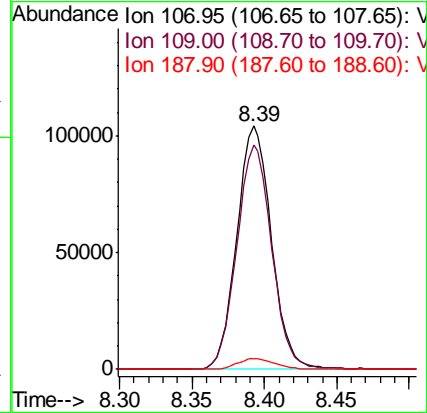
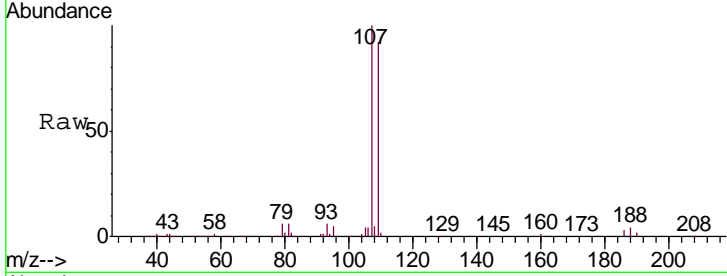




#50
 1,2-Dibromoethane
 Concen: 4.598 ug/L
 RT: 8.39 min Scan# 2271
 Delta R.T. -0.00 min
 Lab File: VV013341.D
 Acq: 25 Oct 2019 13:10

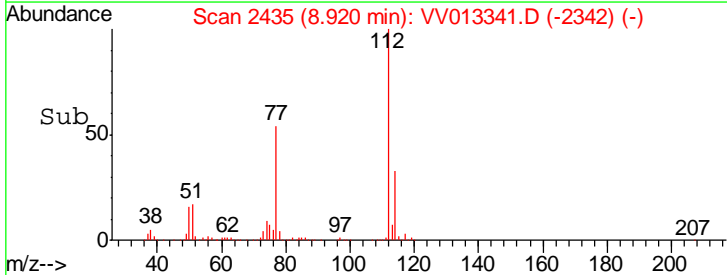
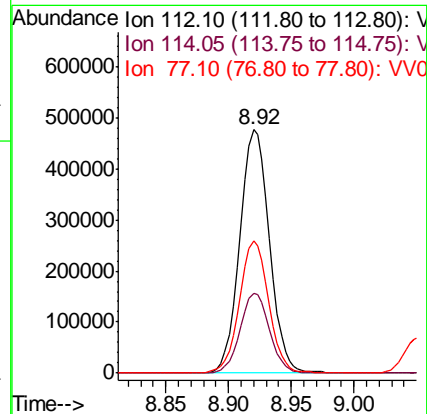
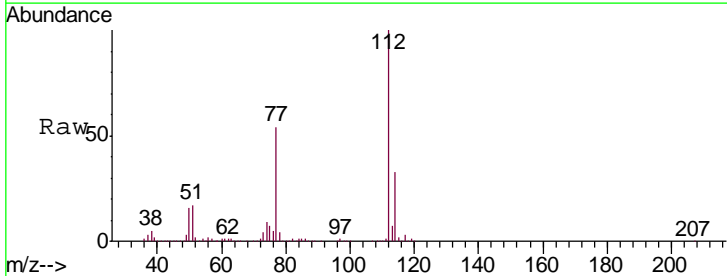
Instrument :
 MSVOA_V
ClientSampled :
 VSTD00555

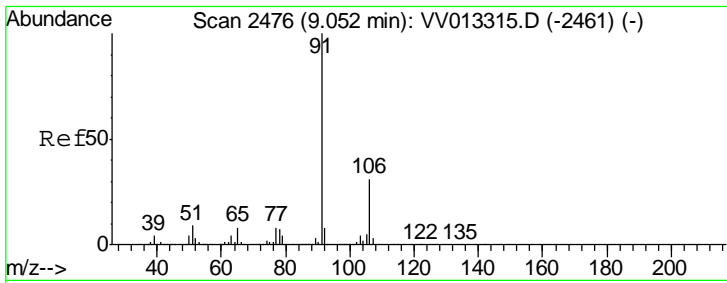
Tgt Ion	Resp	Lower	Upper
107	172642		
109	92.4	65.5	121.6
188	4.5	3.7	5.5



#51
 Chlorobenzene
 Concen: 4.907 ug/L
 RT: 8.92 min Scan# 2435
 Delta R.T. -0.00 min
 Lab File: VV013341.D
 Acq: 25 Oct 2019 13:10

Tgt Ion	Resp	Lower	Upper
112	783879		
114	32.7	21.8	40.6
77	54.1	44.4	66.6

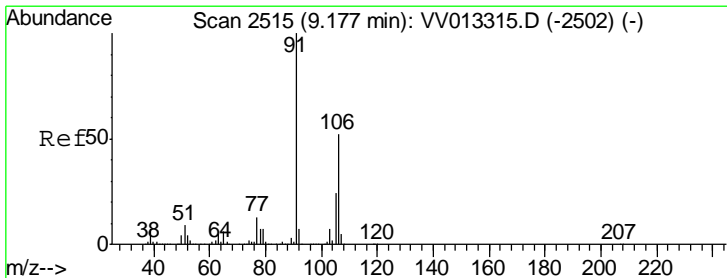
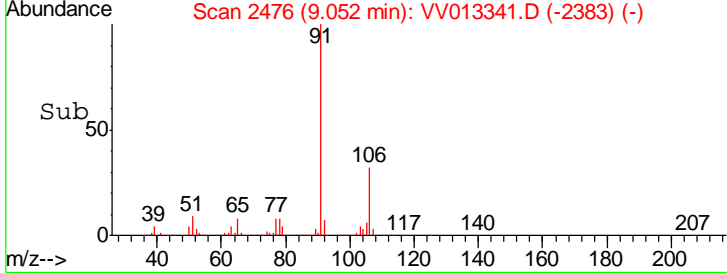
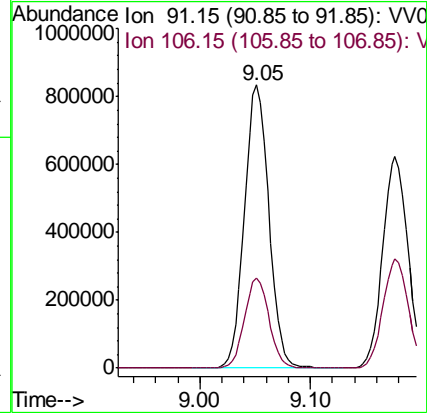
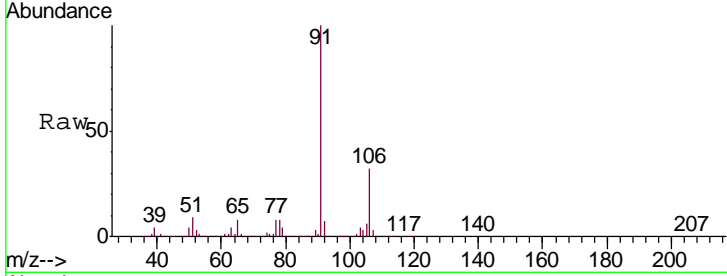




#52
 Ethylbenzene
 Concen: 5.047 ug/L
 RT: 9.05 min Scan# 2476
 Delta R.T. -0.00 min
 Lab File: VV013341.D
 Acq: 25 Oct 2019 13:10

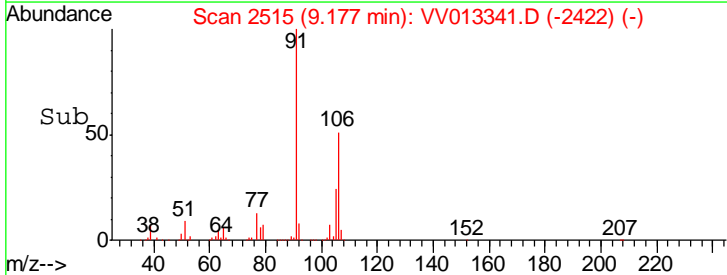
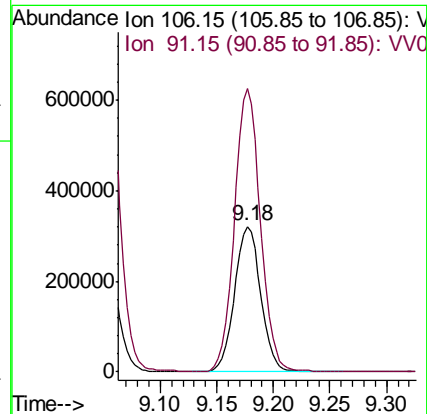
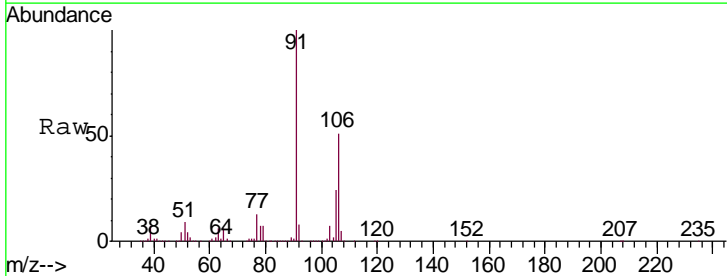
Instrument :
 MSVOA_V
 ClientSampled :
 VSTD00555

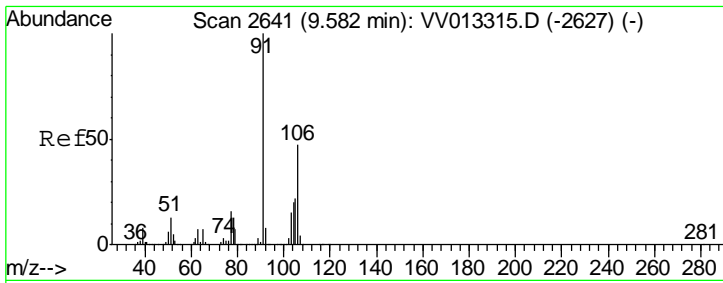
Tgt Ion: 91 Resp: 1283861
 Ion Ratio Lower Upper
 91 100
 106 31.9 22.4 41.6



#53
 m,p-xylene
 Concen: 5.298 ug/L
 RT: 9.18 min Scan# 2515
 Delta R.T. -0.00 min
 Lab File: VV013341.D
 Acq: 25 Oct 2019 13:10

Tgt Ion: 106 Resp: 515886
 Ion Ratio Lower Upper
 106 100
 91 194.5 137.8 255.8

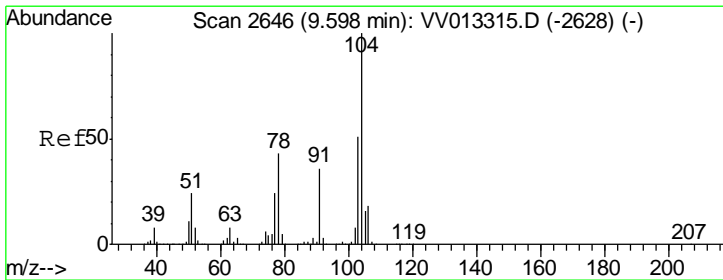
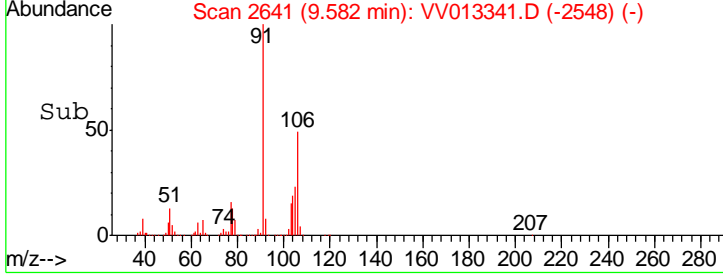
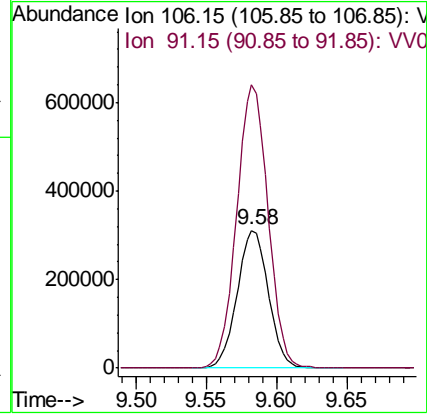
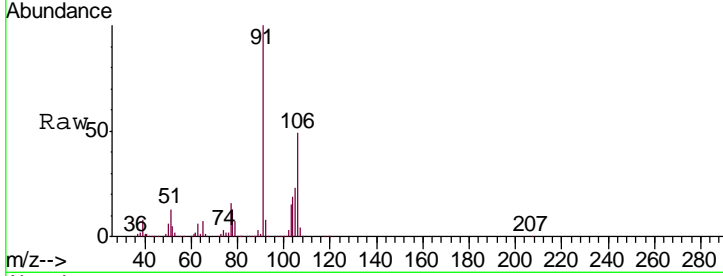




#54
 o-xylene
 Concen: 5.234 ug/L
 RT: 9.58 min Scan# 2641
 Delta R.T. -0.00 min
 Lab File: VV013341.D
 Acq: 25 Oct 2019 13:10

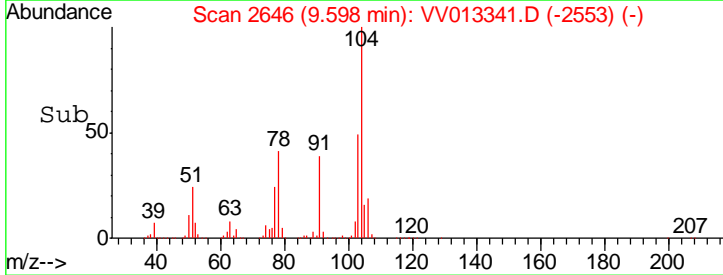
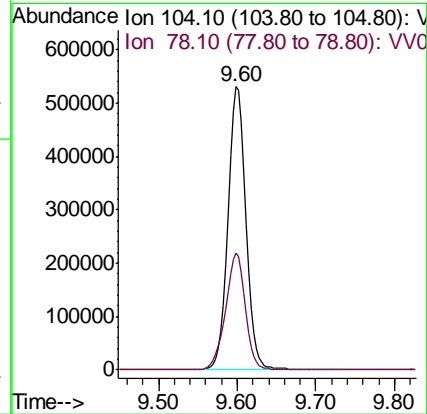
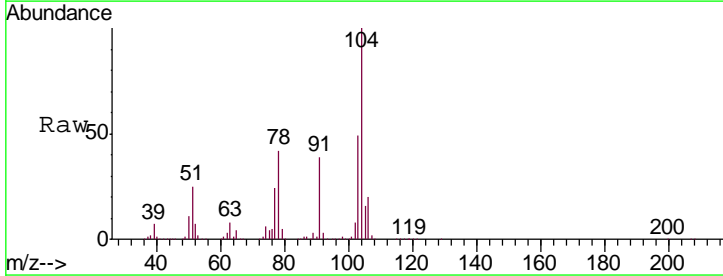
Instrument : MSVOA_V
 ClientSampled : VSTD00555

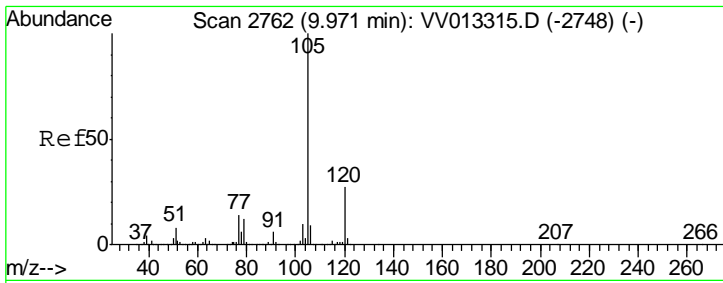
Tgt Ion:106 Resp: 483930
 Ion Ratio Lower Upper
 106 100
 91 205.4 147.0 273.0



#55
 Styrene
 Concen: 5.324 ug/L
 RT: 9.60 min Scan# 2646
 Delta R.T. -0.00 min
 Lab File: VV013341.D
 Acq: 25 Oct 2019 13:10

Tgt Ion:104 Resp: 836497
 Ion Ratio Lower Upper
 104 100
 78 41.5 29.6 55.0

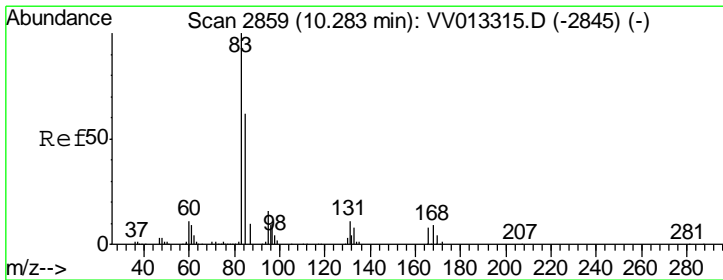
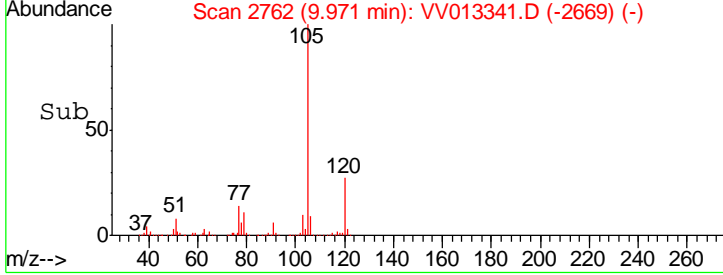
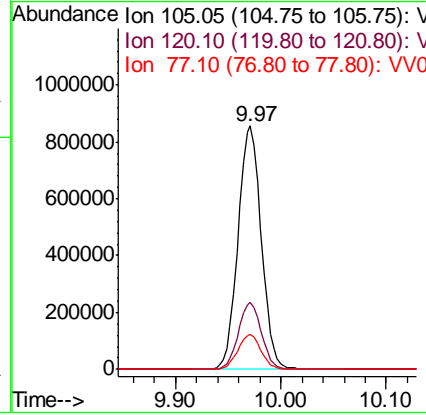
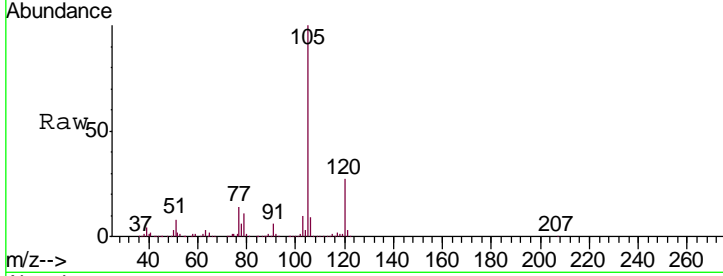




#56
 Isopropylbenzene
 Concen: 5.339 ug/L
 RT: 9.97 min Scan# 2762
 Delta R.T. -0.00 min
 Lab File: VV013341.D
 Acq: 25 Oct 2019 13:10

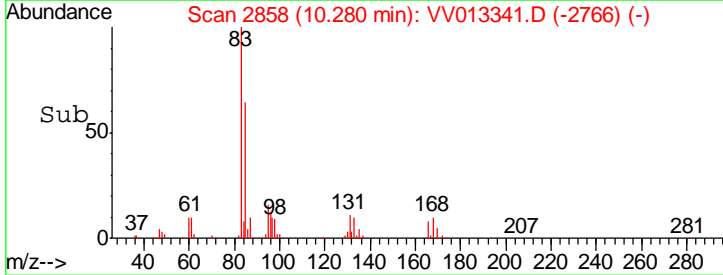
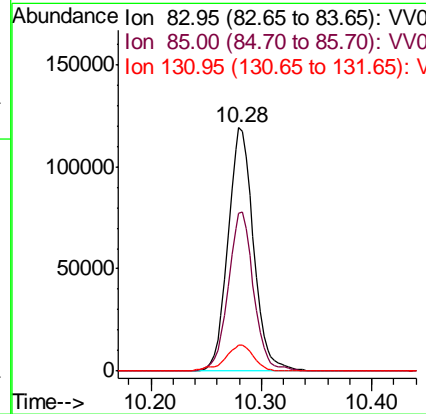
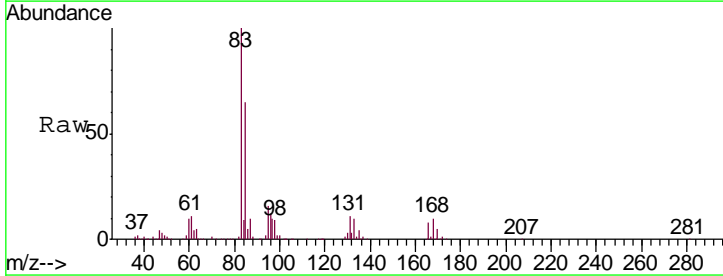
Instrument : MSVOA_V
 ClientSampled : VSTD00555

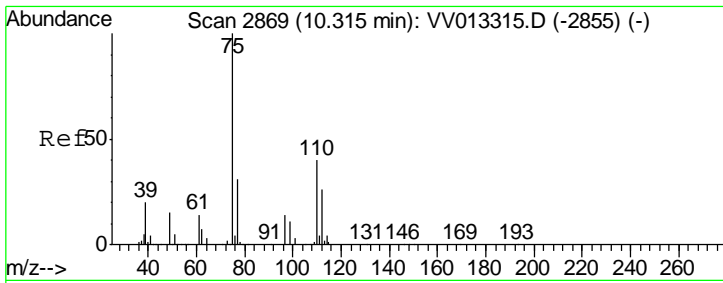
Tgt Ion	Resp	Lower	Upper
105	1301993		
105	100		
120	27.2	21.8	32.6
77	14.4	12.0	18.0



#58
 1,1,2,2-Tetrachloroethane
 Concen: 4.224 ug/L
 RT: 10.28 min Scan# 2858
 Delta R.T. -0.00 min
 Lab File: VV013341.D
 Acq: 25 Oct 2019 13:10

Tgt Ion	Resp	Lower	Upper
83	191299		
83	100		
85	64.9	43.3	80.3
131	10.7	8.3	12.5

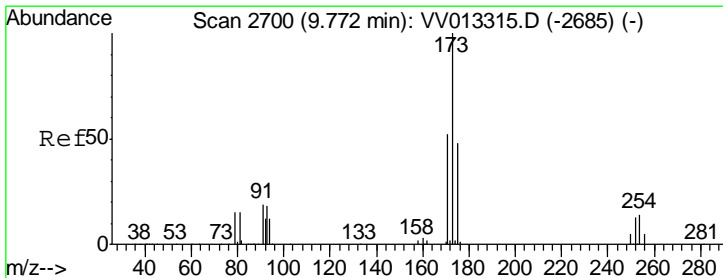
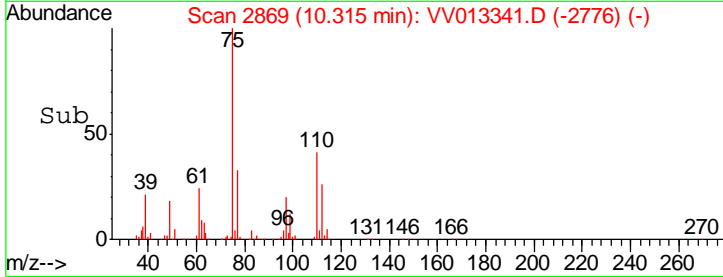
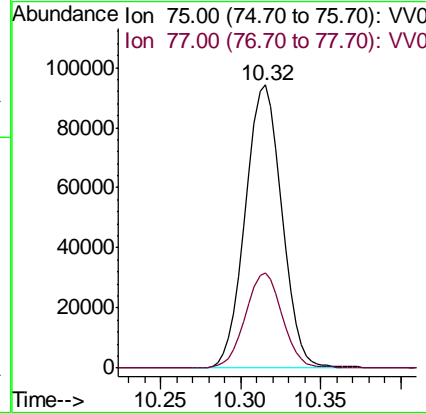
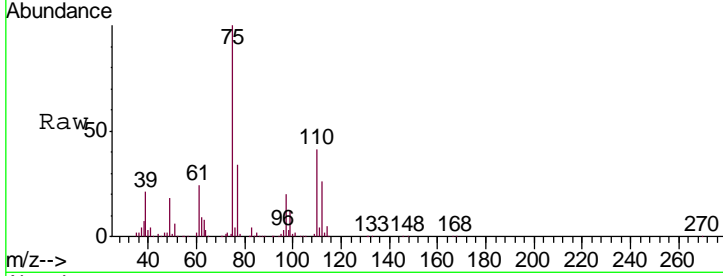




#59
 1,2,3-Trichloropropane
 Concen: 4.359 ug/L
 RT: 10.32 min Scan# 2869
 Delta R.T. -0.00 min
 Lab File: VV013341.D
 Acq: 25 Oct 2019 13:10

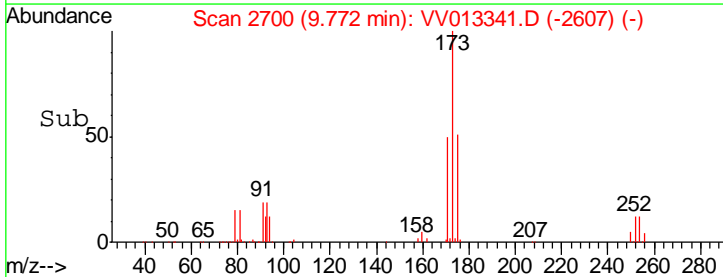
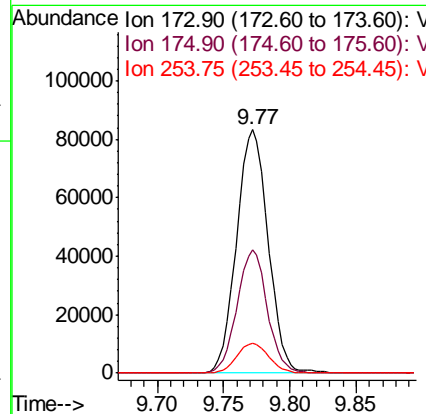
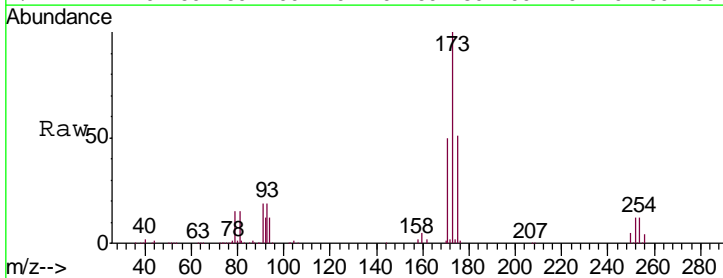
Instrument : MSVOA_V
 ClientSampled : VSTD00555

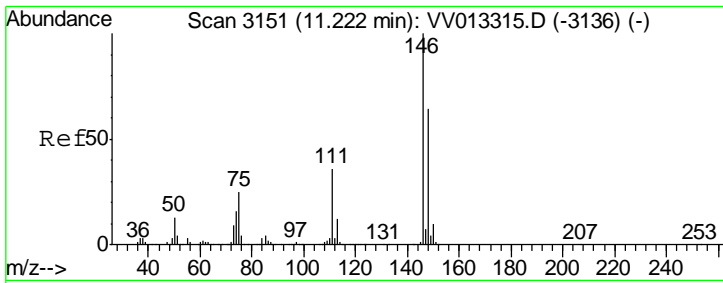
Tgt Ion: 75 Resp: 146732
 Ion Ratio Lower Upper
 75 100
 77 33.4 24.7 37.1



#61
 Bromoform
 Concen: 4.651 ug/L
 RT: 9.77 min Scan# 2700
 Delta R.T. -0.00 min
 Lab File: VV013341.D
 Acq: 25 Oct 2019 13:10

Tgt Ion: 173 Resp: 137688
 Ion Ratio Lower Upper
 173 100
 175 48.7 38.8 58.2
 254 12.5 9.8 14.8

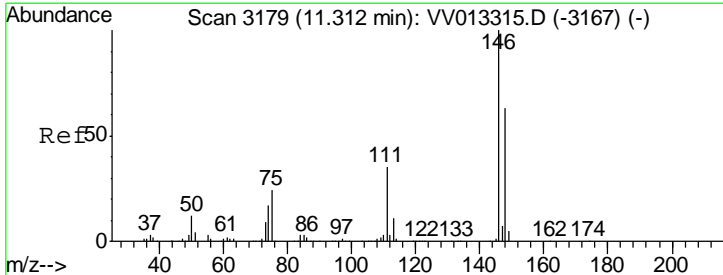
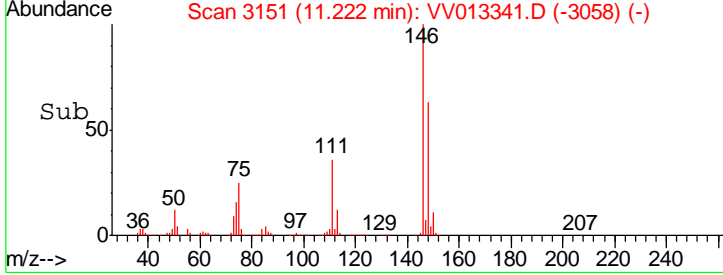
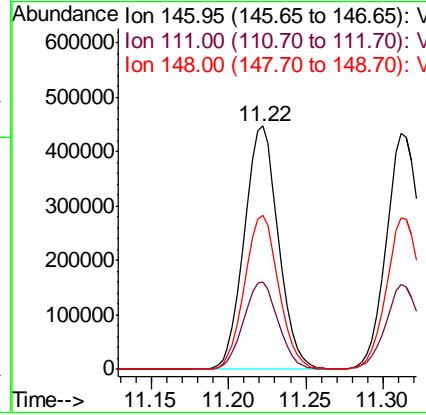
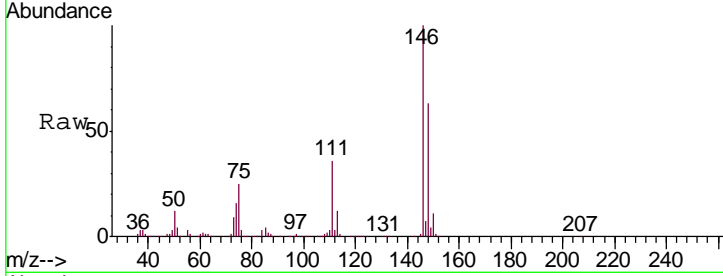




#62
 1,3-Dichlorobenzene
 Concen: 5.020 ug/L
 RT: 11.22 min Scan# 3151
 Delta R.T. -0.00 min
 Lab File: VV013341.D
 Acq: 25 Oct 2019 13:10

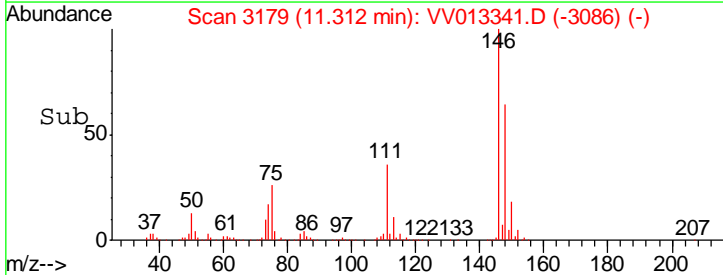
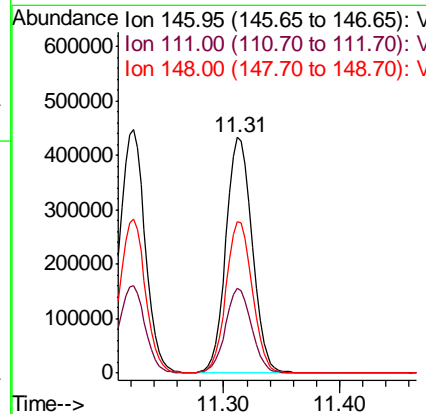
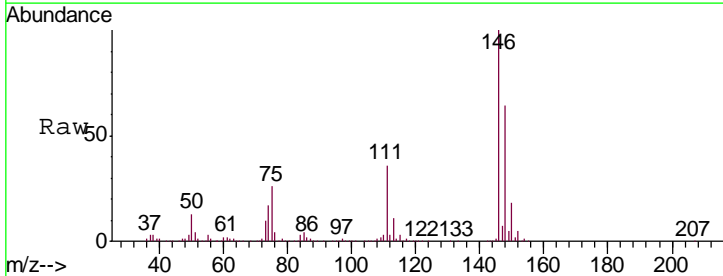
Instrument : MSVOA_V
 ClientSampled : VSTD00555

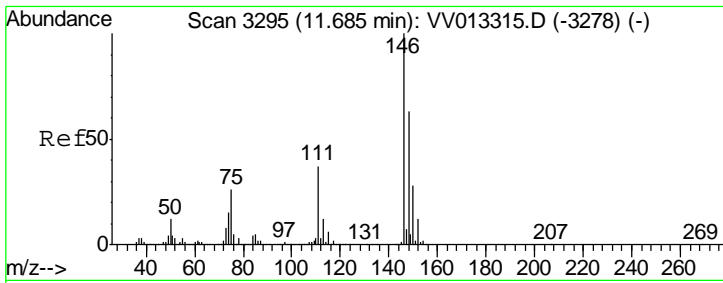
Tgt Ion	Resp	Lower	Upper
146	100		
111	35.7	25.8	47.8
148	63.3	43.8	81.3



#63
 1,4-Dichlorobenzene
 Concen: 4.898 ug/L
 RT: 11.31 min Scan# 3179
 Delta R.T. -0.00 min
 Lab File: VV013341.D
 Acq: 25 Oct 2019 13:10

Tgt Ion	Resp	Lower	Upper
146	100		
111	36.3	24.6	45.6
148	64.4	43.3	80.5

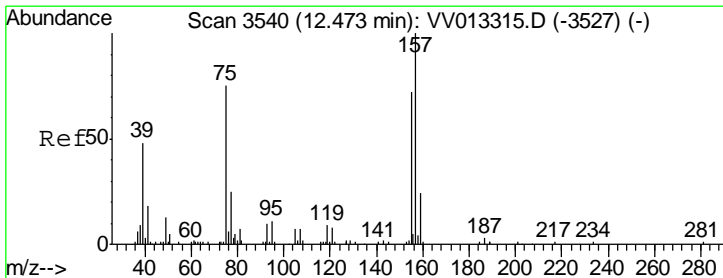
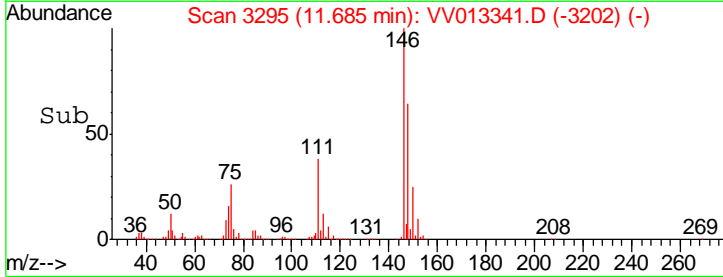
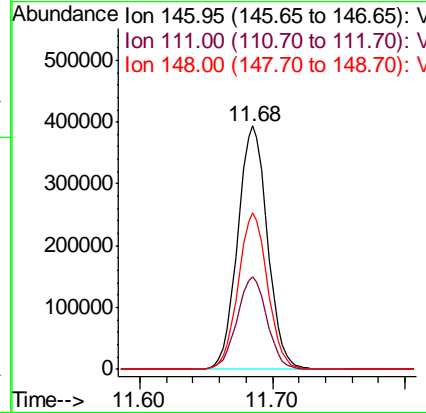
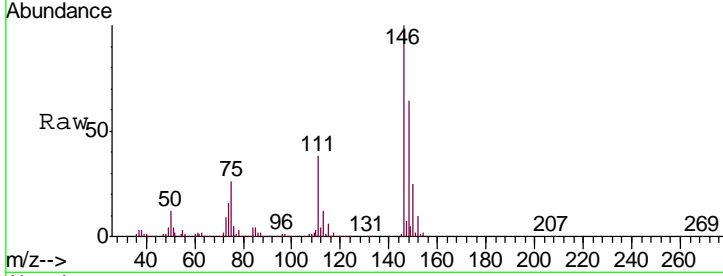




#65
 1,2-Dichlorobenzene
 Concen: 4.866 ug/L
 RT: 11.68 min Scan# 3295
 Delta R.T. -0.00 min
 Lab File: VV013341.D
 Acq: 25 Oct 2019 13:10

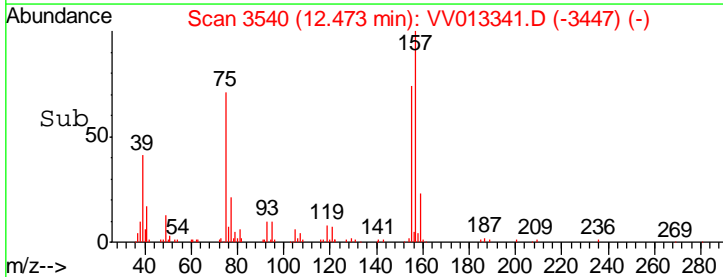
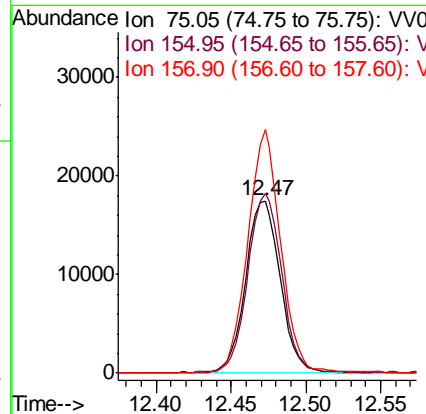
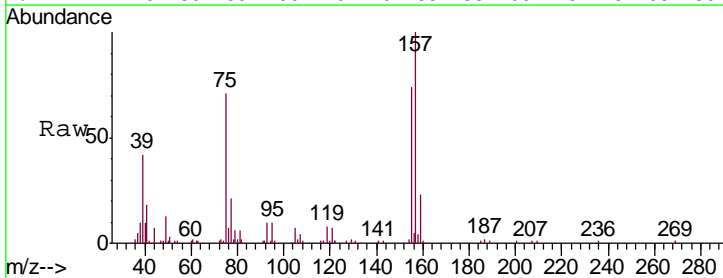
Instrument : MSVOA_V
 ClientSampled : VSTD00555

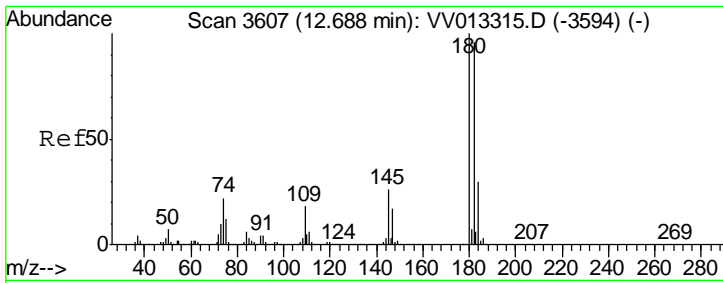
Tgt Ion	Resp	Lower	Upper
146	612837		
111	37.9	31.8	47.6
148	64.1	51.0	76.6



#66
 1,2-Dibromo-3-chloropropane
 Concen: 3.948 ug/L
 RT: 12.47 min Scan# 3540
 Delta R.T. -0.00 min
 Lab File: VV013341.D
 Acq: 25 Oct 2019 13:10

Tgt Ion	Resp	Lower	Upper
75	28238		
155	104.4	69.3	103.9#
157	141.6	94.3	141.5#

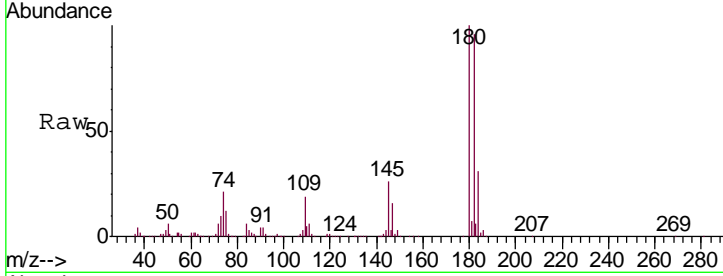




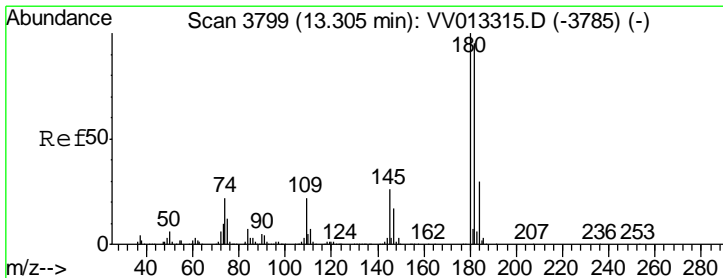
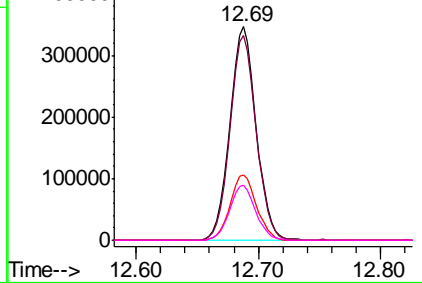
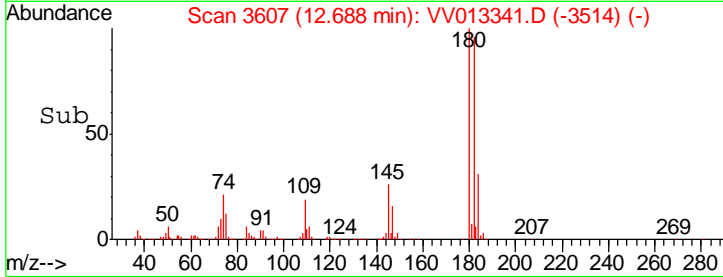
#67
 1,3,5-Trichlorobenzene
 Concen: 5.149 ug/L
 RT: 12.69 min Scan# 3607
 Delta R.T. -0.00 min
 Lab File: VV013341.D
 Acq: 25 Oct 2019 13:10

Instrument : MSVOA_V
 ClientSampled : VSTD00555

Tgt Ion	Resp	Lower	Upper
180	100		
182	95.4	76.2	114.2
184	30.8	24.0	36.0
145	25.8	21.8	32.8

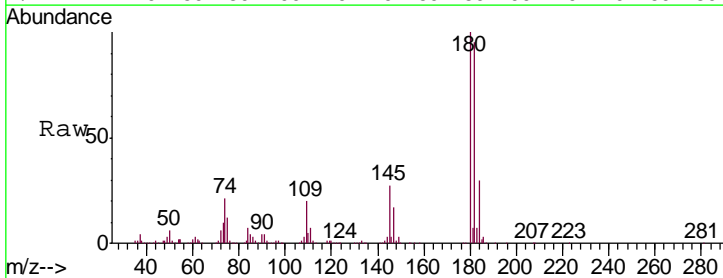


Abundance Ion 180.00 (179.70 to 180.70): V
 Ion 182.00 (181.70 to 182.70): V
 Ion 184.00 (183.70 to 184.70): V
 Ion 145.00 (144.70 to 145.70): V

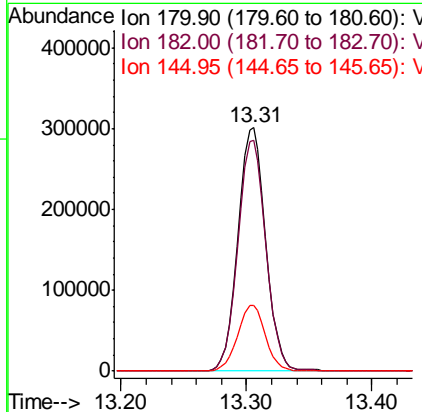
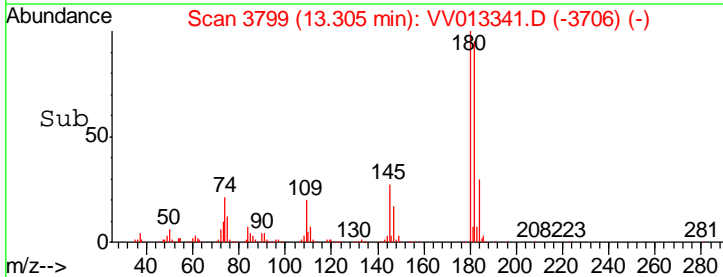


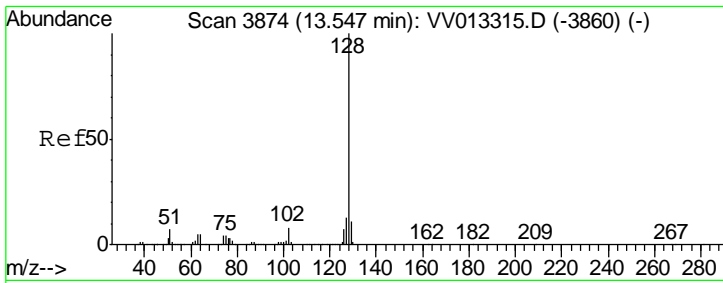
#68
 1,2,4-trichlorobenzene
 Concen: 5.226 ug/L
 RT: 13.31 min Scan# 3799
 Delta R.T. -0.00 min
 Lab File: VV013341.D
 Acq: 25 Oct 2019 13:10

Tgt Ion	Resp	Lower	Upper
180	100		
182	95.7	76.7	115.1
145	27.1	22.1	33.1



Abundance Ion 179.90 (179.60 to 180.60): V
 Ion 182.00 (181.70 to 182.70): V
 Ion 144.95 (144.65 to 145.65): V

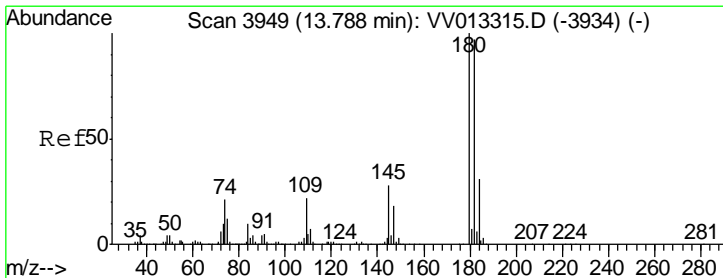
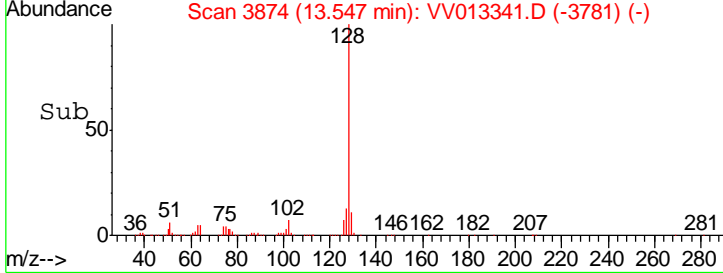
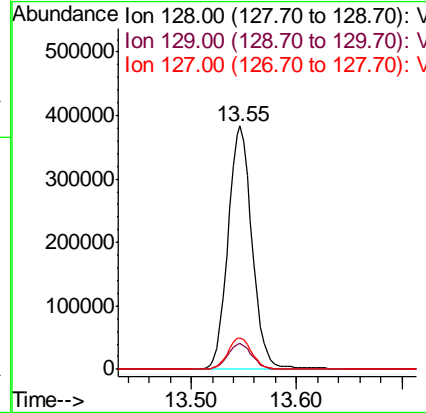
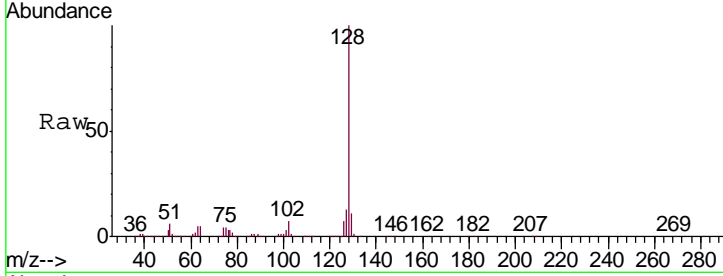




#69
 Naphthalene
 Concen: 4.955 ug/L
 RT: 13.55 min Scan# 3874
 Delta R.T. -0.00 min
 Lab File: VV013341.D
 Acq: 25 Oct 2019 13:10

Instrument : MSVOA_V
 ClientSampled : VSTD00555

Tgt Ion	Resp	Lower	Upper
128	604523		
129	10.6	9.0	13.6
127	12.9	10.4	15.6



#70
 1,2,3-Trichlorobenzene
 Concen: 5.136 ug/L
 RT: 13.79 min Scan# 3949
 Delta R.T. -0.00 min
 Lab File: VV013341.D
 Acq: 25 Oct 2019 13:10

Tgt Ion	Resp	Lower	Upper
180	421889		
182	96.8	76.5	114.7
145	29.1	23.5	35.3

