

Data Path : Z:\voasrv\HPCHEM1\MSVOA_V\Data\VW102623\
 Data File : VV032658.D
 Acq On : 26 Oct 2023 13:29
 Operator : SY/MD
 Sample : 04995-17
 Misc : 25.0mL/MSVOA_V/WATER
 ALS Vial : 11 Sample Multiplier: 1

Instrument :
 MSVOA_V
ClientSampleId :
 A4A51

Quant Time: Oct 27 05:35:12 2023
 Quant Method : Z:\voasrv\HPCHEM1\MSVOA_V\Method\SFAMVTR092923WMA.M
 Quant Title : TRACE VOA SFAM1.0
 QLast Update : Fri Oct 27 05:30:38 2023
 Response via : Initial Calibration

Compound	R.T.	QIon	Response	Conc	Units	Dev(Min)

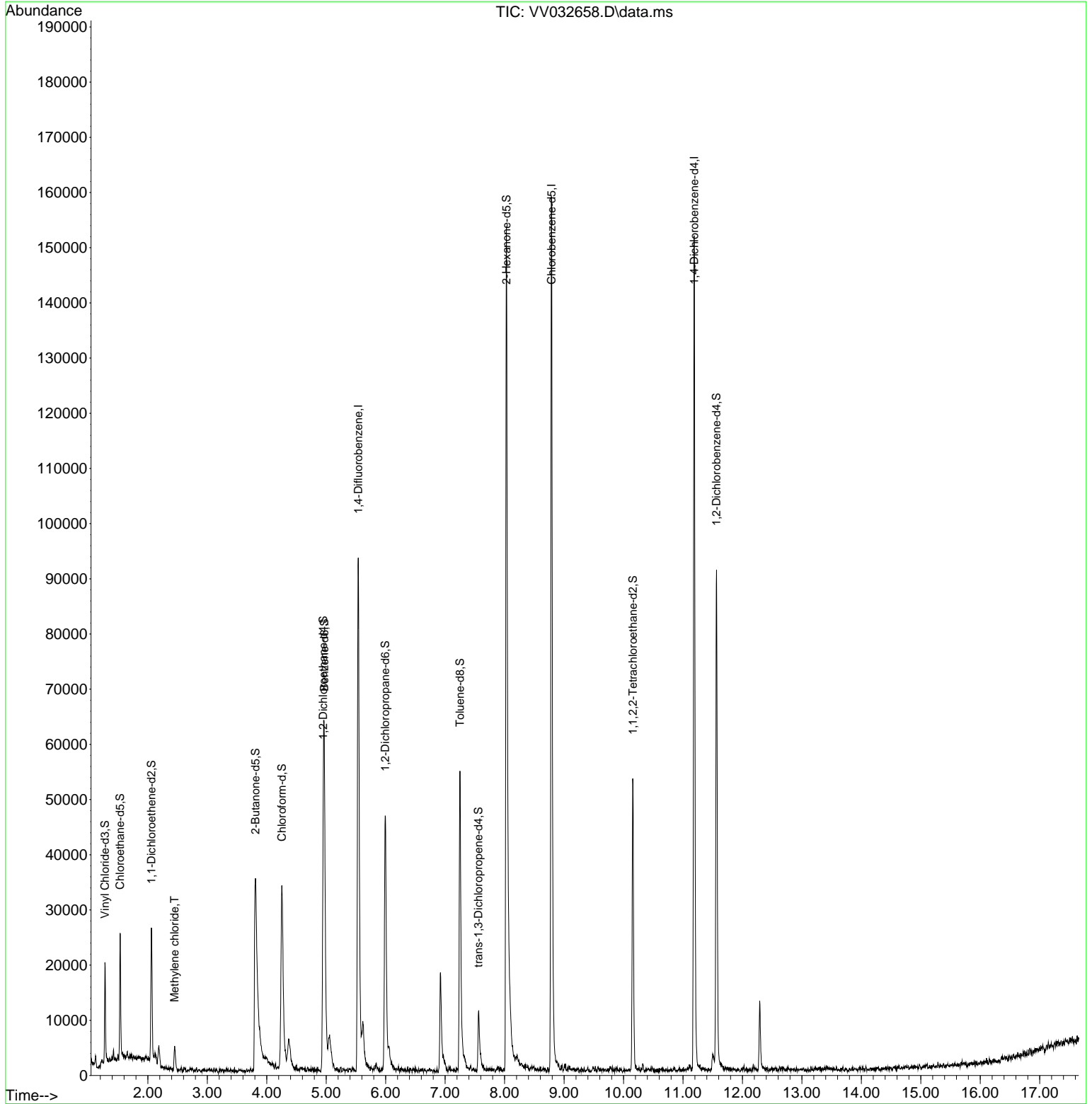
Internal Standards						
1) 1,4-Difluorobenzene	5.539	114	80225	5.000	ug/L	0.00
28) Chlorobenzene-d5	8.789	117	91098	5.000	ug/L	0.00
58) 1,4-Dichlorobenzene-d4	11.188	152	39286	5.000	ug/L	0.00
System Monitoring Compounds						
4) Vinyl Chloride-d3	1.278	65	10557	1.618	ug/L	0.00
Spiked Amount	5.000	Range 40 - 130	Recovery	=	32.400%#	
7) Chloroethane-d5	1.532	69	14199	2.681	ug/L	0.00
Spiked Amount	5.000	Range 65 - 130	Recovery	=	53.600%#	
11) 1,1-Dichloroethene-d2	2.060	65	4069	1.479	ug/L	0.00
Spiked Amount	5.000	Range 60 - 125	Recovery	=	29.600%#	
20) 2-Butanone-d5	3.809	46	72190	43.738	ug/L	-0.02
Spiked Amount	50.000	Range 40 - 130	Recovery	=	87.480%	
24) Chloroform-d	4.252	84	34539	3.001	ug/L	0.00
Spiked Amount	5.000	Range 70 - 125	Recovery	=	60.000%#	
26) 1,2-Dichloroethane-d4	4.950	65	21137	3.877	ug/L	0.00
Spiked Amount	5.000	Range 70 - 130	Recovery	=	77.600%	
32) Benzene-d6	4.966	84	51616	1.926	ug/L	0.00
Spiked Amount	5.000	Range 70 - 125	Recovery	=	38.600%#	
36) 1,2-Dichloropropane-d6	5.992	67	21619	2.434	ug/L	0.00
Spiked Amount	5.000	Range 60 - 140	Recovery	=	48.600%#	
41) Toluene-d8	7.249	98	38839	1.585	ug/L	0.00
Spiked Amount	5.000	Range 70 - 130	Recovery	=	31.600%#	
43) trans-1,3-Dichloroprop...	7.561	79	7338	2.332	ug/L	0.00
Spiked Amount	5.000	Range 55 - 130	Recovery	=	46.600%#	
46) 2-Hexanone-d5	8.030	63	52735	35.614	ug/L	0.00
Spiked Amount	50.000	Range 45 - 130	Recovery	=	71.220%	
56) 1,1,2,2-Tetrachloroeth...	10.156	84	24976	4.021	ug/L	0.00
Spiked Amount	5.000	Range 65 - 120	Recovery	=	80.400%	
66) 1,2-Dichlorobenzene-d4	11.564	152	23327	3.200	ug/L	0.00
Spiked Amount	5.000	Range 80 - 120	Recovery	=	64.000%#	
Target Compounds						
16) Methylene chloride	2.449	84	1679	0.219	ug/L	Qvalue 87

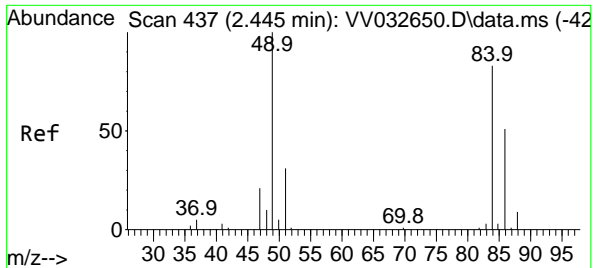
(#) = qualifier out of range (m) = manual integration (+) = signals summed

Data Path : Z:\voasrv\HPCHEM1\MSVOA_V\Data\VV102623\
 Data File : VV032658.D
 Acq On : 26 Oct 2023 13:29
 Operator : SY/MD
 Sample : 04995-17
 Misc : 25.0mL/MSVOA_V/WATER
 ALS Vial : 11 Sample Multiplier: 1

Instrument :
 MSVOA_V
 ClientSampleId :
 A4A51

Quant Time: Oct 27 05:35:12 2023
 Quant Method : Z:\voasrv\HPCHEM1\MSVOA_V\Method\SFAMVTR092923WMA.M
 Quant Title : TRACE VOA SFAM1.0
 QLast Update : Fri Oct 27 05:30:38 2023
 Response via : Initial Calibration





#16
 Methylene chloride
 Concen: 0.219 ug/L
 RT: 2.449 min Scan# 41
 Delta R.T. 0.003 min
 Lab File: VV032658.D
 Acq: 26 Oct 2023 13:29

Instrument : MSVOA_V
 ClientSampleId : A4A51

Tgt Ion: 84 Resp: 1679

Ion	Ratio	Lower	Upper
84	100		
86	52.4	43.2	80.2
49	107.4	86.3	160.3

