

Data Path : Z:\voasrv\HPCHEM1\MSVOA_V\Data\VV102721\
 Data File : VV023055.D
 Acq On : 27 Oct 2021 14:03
 Operator : SY/MD
 Sample : M4278-02
 Misc : 25.0mL/MSVOA_V/WATER
 ALS Vial : 4 Sample Multiplier: 1

Instrument :
 MSVOA_V
 ClientSampleId :
 BFGF3

Integration Parameters: rteint.p

Integrator: RTE
 Smoothing : ON Filtering: 5
 Sampling : 1 Min Area: 3 % of largest Peak
 Start Thrs: 0.1 Max Peaks: 100
 Stop Thrs : 0 Peak Location: TOP

If leading or trailing edge < 100 prefer < Baseline drop else tangent >
 Peak separation: 5

Method : Z:\voasrv\HPCHEM1\MSVOA_V\Method\SFAMVTR102221WMA.M
 Title : TRACE VOA SFAM1.0

Signal : TIC: VV023055.D\data.ms

peak #	R.T. min	first scan	max scan	last scan	PK TY	peak height	corr. area	corr. % max.	% of total
1	1.307	74	83	98	rBV	81063	90115	3.17%	1.155%
2	1.568	157	164	175	rVB	58130	65482	2.31%	0.839%
3	2.108	322	332	344	rBV	97584	144166	5.08%	1.847%
4	2.339	375	404	480	rBV2	397209	2838938	100.00%	36.381%
5	3.886	874	885	921	rBV	56251	183238	6.45%	2.348%
6	4.346	1013	1028	1061	rBV2	87922	233266	8.22%	2.989%
7	5.050	1230	1247	1261	rBV2	201585	512475	18.05%	6.567%
8	5.619	1411	1424	1446	rBV	137888	284479	10.02%	3.646%
9	6.072	1549	1565	1595	rBV	116722	251637	8.86%	3.225%
10	6.989	1837	1850	1871	rBV	49296	94138	3.32%	1.206%
11	7.317	1938	1952	1965	rBV	232605	408106	14.38%	5.230%
12	7.391	1965	1975	2005	rVB	313029	547789	19.30%	7.020%
13	7.625	2039	2048	2070	rBV	29960	54533	1.92%	0.699%
14	8.091	2182	2193	2227	rBV2	205975	430289	15.16%	5.514%
15	8.854	2418	2430	2450	rBV	217181	357143	12.58%	4.577%
16	9.018	2469	2481	2492	rBV	36191	60175	2.12%	0.771%
17	9.140	2506	2519	2539	rBV	120873	200226	7.05%	2.566%
18	9.545	2635	2645	2664	rBV	46485	75705	2.67%	0.970%
19	10.217	2844	2854	2871	rBV	73857	118438	4.17%	1.518%
20	10.452	2918	2927	2946	rBV2	17160	38598	1.36%	0.495%
21	10.918	3063	3072	3087	rBV	25600	41678	1.47%	0.534%
22	11.249	3164	3175	3194	rBV	209260	324632	11.43%	4.160%
23	11.529	3251	3262	3275	rBV	44791	78199	2.75%	1.002%
24	11.625	3281	3292	3311	rVB	231586	369971	13.03%	4.741%

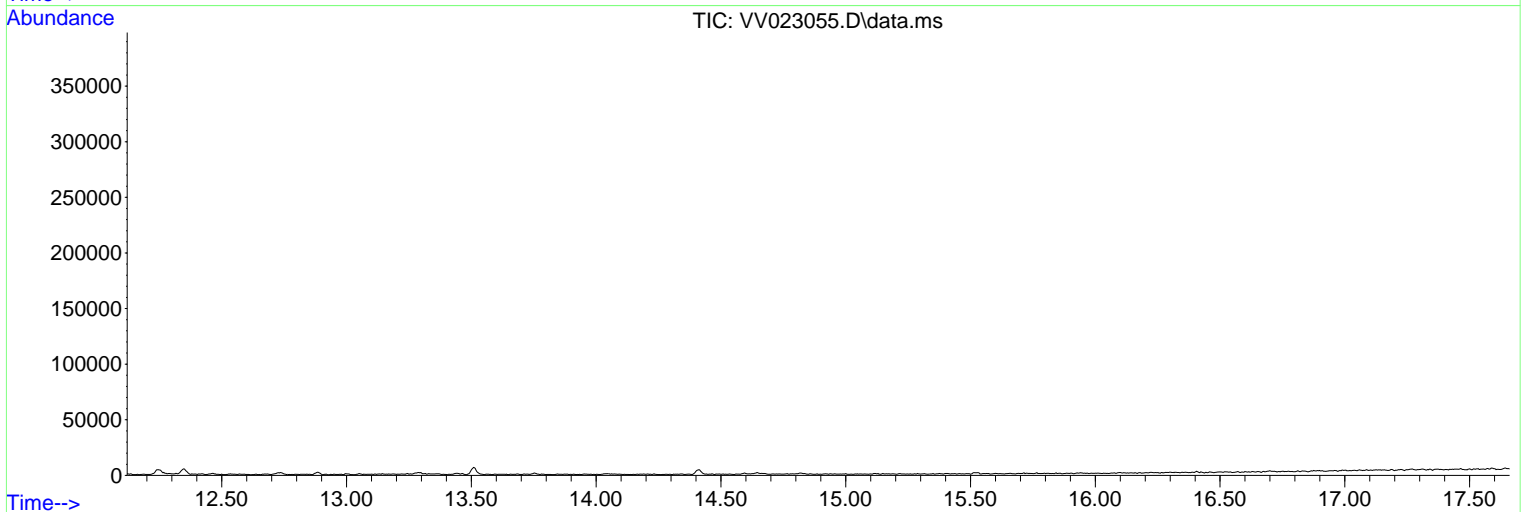
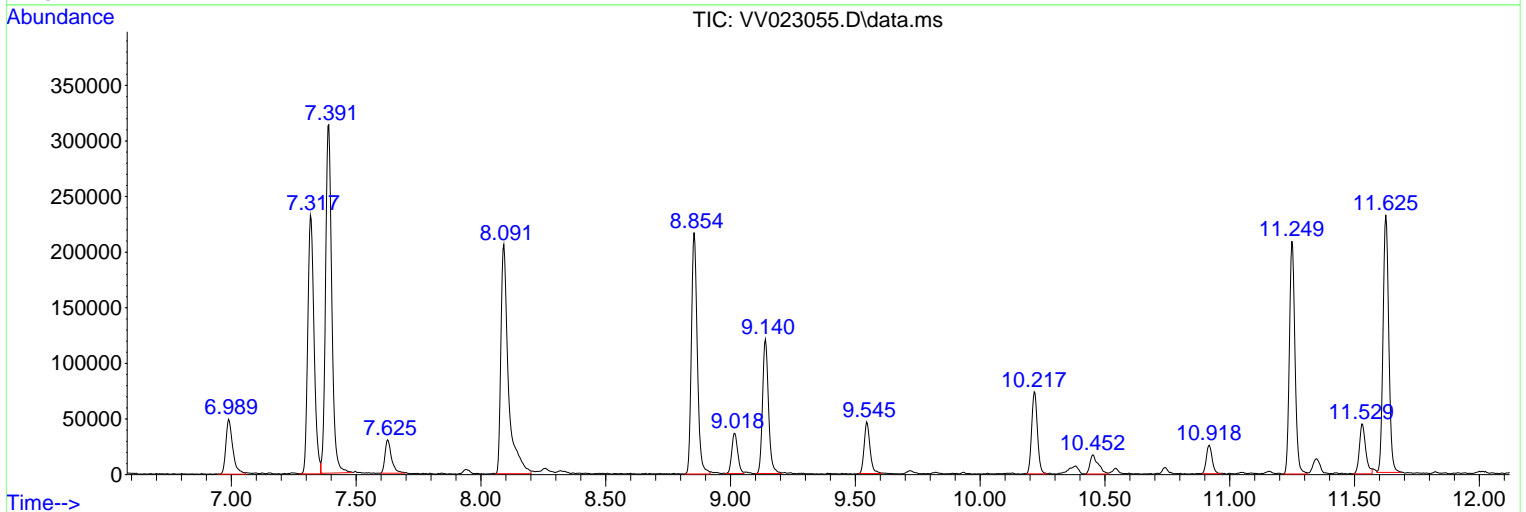
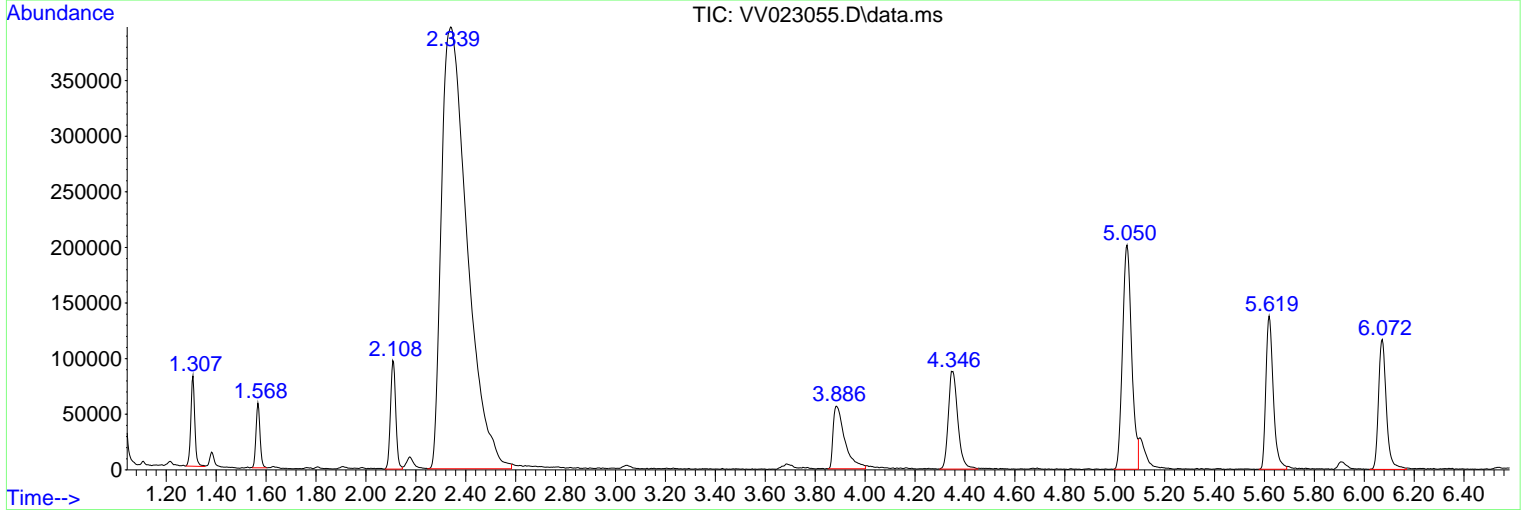
Sum of corrected areas: 7803416

Data Path : Z:\voasrv\HPCHEM1\MSVOA_V\Data\VV102721\
 Data File : VV023055.D
 Acq On : 27 Oct 2021 14:03
 Operator : SY/MD
 Sample : M4278-02
 Misc : 25.0mL/MSVOA_V/WATER
 ALS Vial : 4 Sample Multiplier: 1

Instrument :
 MSVOA_V
 ClientSampleId :
 BFGF3

Quant Method : Z:\voasrv\HPCHEM1\MSVOA_V\Method\SFAMVTR102221WMA.M
 Quant Title : TRACE VOA SFAM1.0

TIC Library : C:\Database\NIST20.L
 TIC Integration Parameters: LSCINT.P



Data Path : Z:\voasrv\HPCHEM1\MSVOA_V\Data\VV102721\
 Data File : VV023055.D
 Acq On : 27 Oct 2021 14:03
 Operator : SY/MD
 Sample : M4278-02
 Misc : 25.0mL/MSVOA_V/WATER
 ALS Vial : 4 Sample Multiplier: 1

Instrument :
 MSVOA_V
 ClientSampleId :
 BFGF3

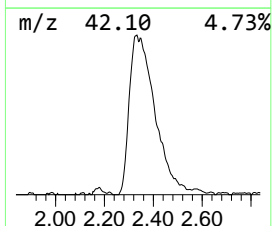
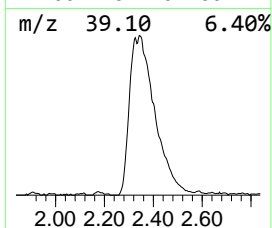
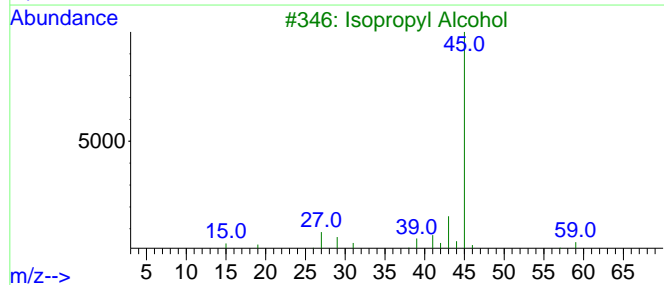
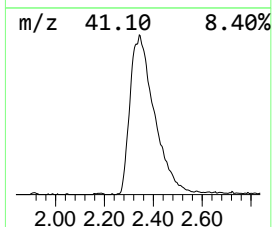
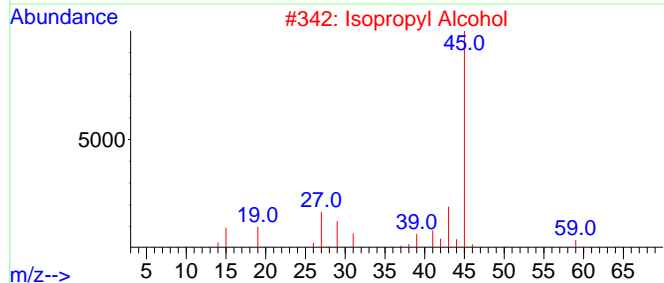
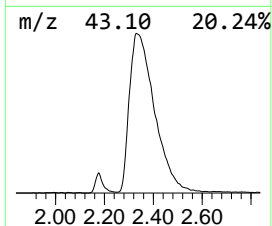
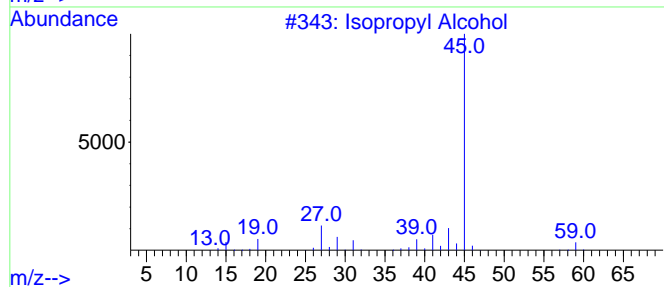
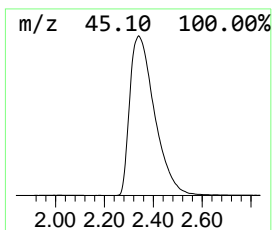
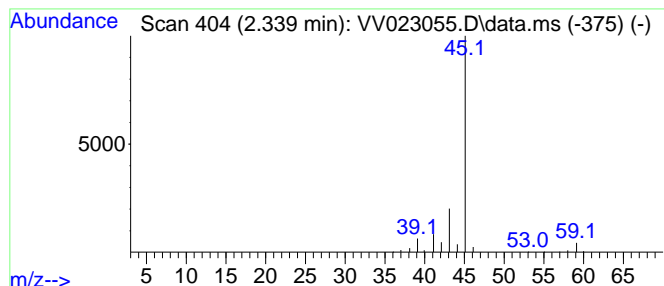
Quant Method : Z:\voasrv\HPCHEM1\MSVOA_V\Method\SFAMVTR102221WMA.M
 Quant Title : TRACE VOA SFAM1.0

TIC Library : C:\Database\NIST0.L
 TIC Integration Parameters: LSCINT.P

 Peak Number 1 Isopropyl Alcohol Concentration Rank 1

R.T.	EstConc	Area	Relative to ISTD	R.T.
2.339	49.90 ug/L	2838940	1,4-Difluorobenzene	5.619

Hit#	of	5	Tentative ID	MW	MolForm	CAS#	Qual
1			Isopropyl Alcohol	60	C3H8O	000067-63-0	86
2			Isopropyl Alcohol	60	C3H8O	000067-63-0	78
3			Isopropyl Alcohol	60	C3H8O	000067-63-0	64
4			Isopropyl Alcohol	60	C3H8O	000067-63-0	64
5			Isopropyl Alcohol	60	C3H8O	000067-63-0	64



Data Path : Z:\voasrv\HPCHEM1\MSVOA_V\Data\VV102721\
 Data File : VV023055.D
 Acq On : 27 Oct 2021 14:03
 Operator : SY/MD
 Sample : M4278-02
 Misc : 25.0mL/MSVOA_V/WATER
 ALS Vial : 4 Sample Multiplier: 1

Instrument :
 MSVOA_V
 ClientSampleId :
 BGF3

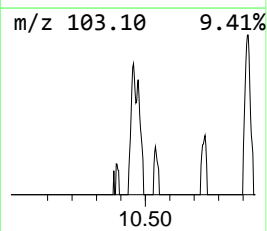
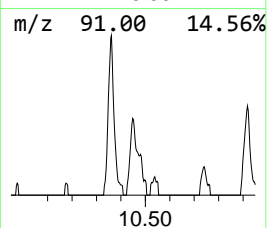
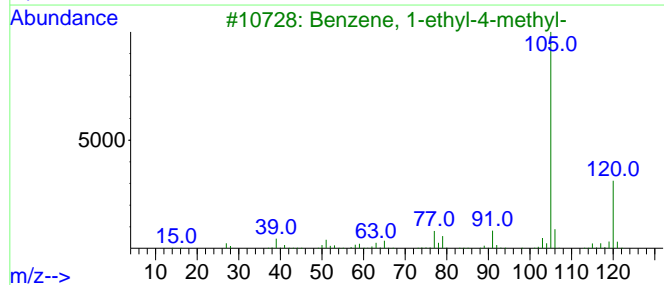
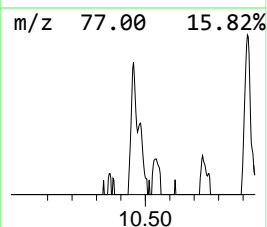
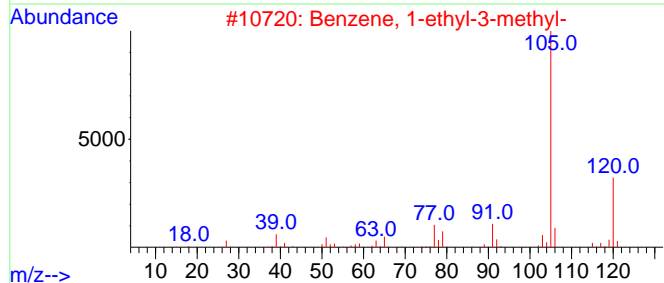
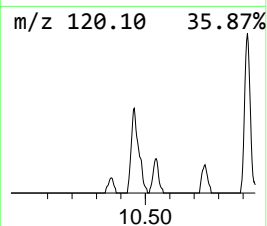
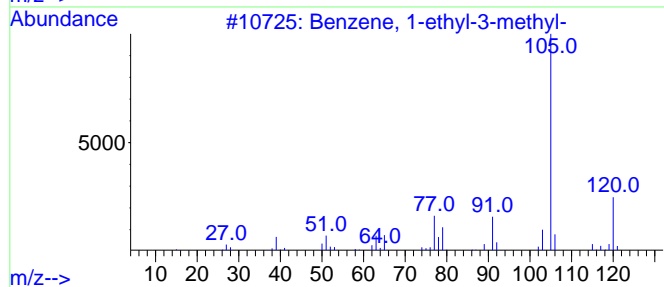
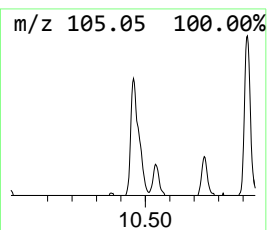
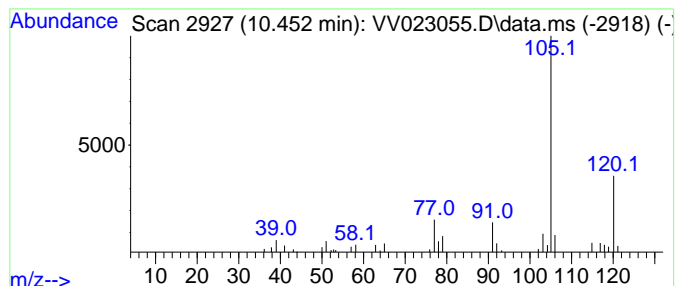
Quant Method : Z:\voasrv\HPCHEM1\MSVOA_V\Method\SFAMVTR102221WMA.M
 Quant Title : TRACE VOA SFAM1.0

TIC Library : C:\Database\NIST0.L
 TIC Integration Parameters: LSCINT.P

 Peak Number 3 Benzene, 1-ethyl-3-methyl- Concentration Rank 4

R.T.	EstConc	Area	Relative to ISTD	R.T.
10.451	0.59 ug/L	38598	1,4-Dichlorobenzene-d4	11.249

Hit#	of	5	Tentative ID	MW	MolForm	CAS#	Qual
1			Benzene, 1-ethyl-3-methyl-	120	C9H12	000620-14-4	93
2			Benzene, 1-ethyl-3-methyl-	120	C9H12	000620-14-4	90
3			Benzene, 1-ethyl-4-methyl-	120	C9H12	000622-96-8	90
4			Benzene, 1-ethyl-4-methyl-	120	C9H12	000622-96-8	87
5			Benzene, 1-ethyl-2-methyl-	120	C9H12	000611-14-3	87



Data Path : Z:\voasrv\HPCHEM1\MSVOA_V\Data\VV102721\
 Data File : VV023055.D
 Acq On : 27 Oct 2021 14:03
 Operator : SY/MD
 Sample : M4278-02
 Misc : 25.0mL/MSVOA_V/WATER
 ALS Vial : 4 Sample Multiplier: 1

Instrument :
 MSVOA_V
 ClientSampleId :
 BFGF3

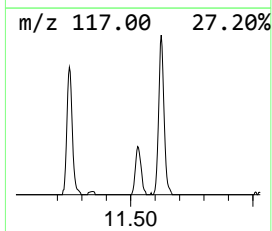
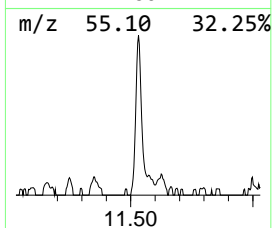
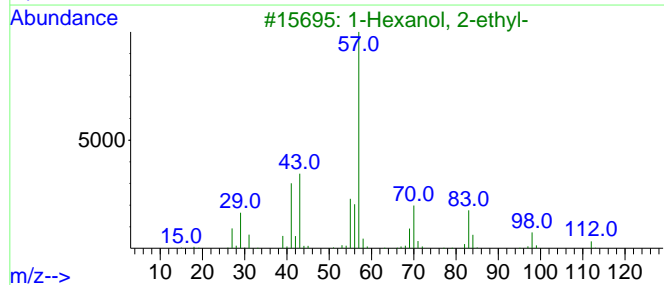
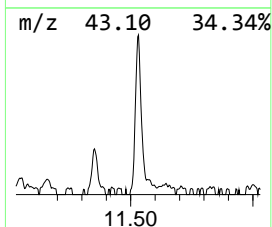
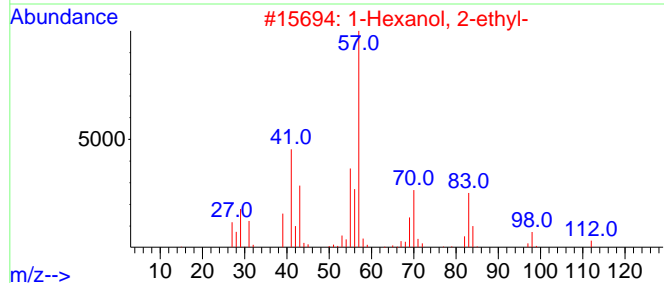
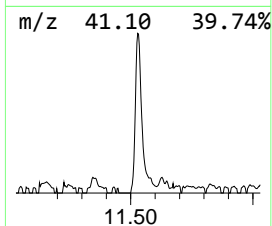
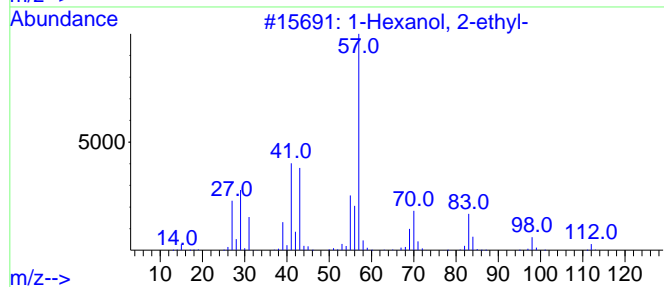
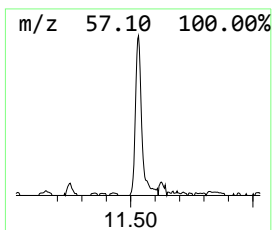
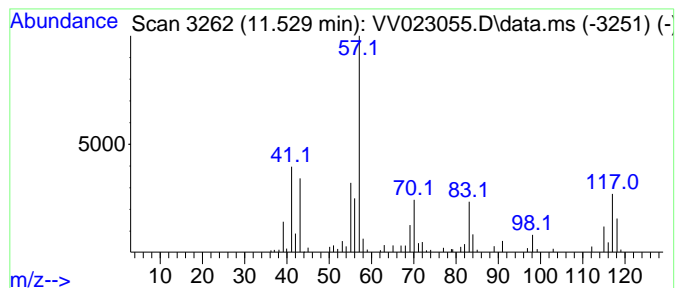
Quant Method : Z:\voasrv\HPCHEM1\MSVOA_V\Method\SFAMVTR102221WMA.M
 Quant Title : TRACE VOA SFAM1.0

TIC Library : C:\Database\NIST0.L
 TIC Integration Parameters: LSCINT.P

 Peak Number 4 1-Hexanol, 2-ethyl- Concentration Rank 3

R.T.	EstConc	Area	Relative to ISTD	R.T.
11.529	1.20 ug/L	78199	1,4-Dichlorobenzene-d4	11.249

Hit#	of 5	Tentative ID	MW	MolForm	CAS#	Qual
1		1-Hexanol, 2-ethyl-	130	C8H18O	000104-76-7	52
2		1-Hexanol, 2-ethyl-	130	C8H18O	000104-76-7	52
3		1-Hexanol, 2-ethyl-	130	C8H18O	000104-76-7	50
4		1-Hexanol, 2-ethyl-	130	C8H18O	000104-76-7	50
5		Heptane, 1,1'-oxybis-	214	C14H30O	000629-64-1	38



Data Path : Z:\voasrv\HPCHEM1\MSVOA_V\Data\VV102721\
Data File : VV023055.D
Acq On : 27 Oct 2021 14:03
Operator : SY/MD
Sample : M4278-02
Misc : 25.0mL/MSVOA_V/WATER
ALS Vial : 4 Sample Multiplier: 1

Instrument :
MSVOA_V
ClientSampleId :
BFGF3

Quant Method : Z:\voasrv\HPCHEM1\MSVOA_V\Method\SFAMVTR102221WMA.M
Quant Title : TRACE VOA SFAM1.0

TIC Library : C:\Database\NIST0.L
TIC Integration Parameters: LSCINT.P

TIC Top Hit name	RT	EstConc	Units	Response	--Internal Standard--			
					#	RT	Resp	Conc
Isopropyl Alcohol	2.339	49.9	ug/L	2838940	1	5.619	284479	5.0
Benzene, 1-ethy...	10.451	0.6	ug/L	38598	3	11.249	324632	5.0
1-Hexanol, 2-et...	11.529	1.2	ug/L	78199	3	11.249	324632	5.0