

Data Path : Z:\voasrv\HPCHEM1\MSVOA\_V\Data\VV102723\  
 Data File : VV032713.D  
 Acq On : 28 Oct 2023 03:26  
 Operator : SY/MD  
 Sample : 05055-21  
 Misc : 25.0mL/MSVOA\_V/WATER  
 ALS Vial : 45 Sample Multiplier: 1

Instrument :  
 MSVOA\_V  
 ClientSampleId :

Quant Time: Oct 28 05:11:25 2023  
 Quant Method : Z:\voasrv\HPCHEM1\MSVOA\_V\Method\SFAMVTR102723WMA.M  
 Quant Title : TRACE VOA SFAM1.0  
 QLast Update : Sat Oct 28 02:08:41 2023  
 Response via : Initial Calibration

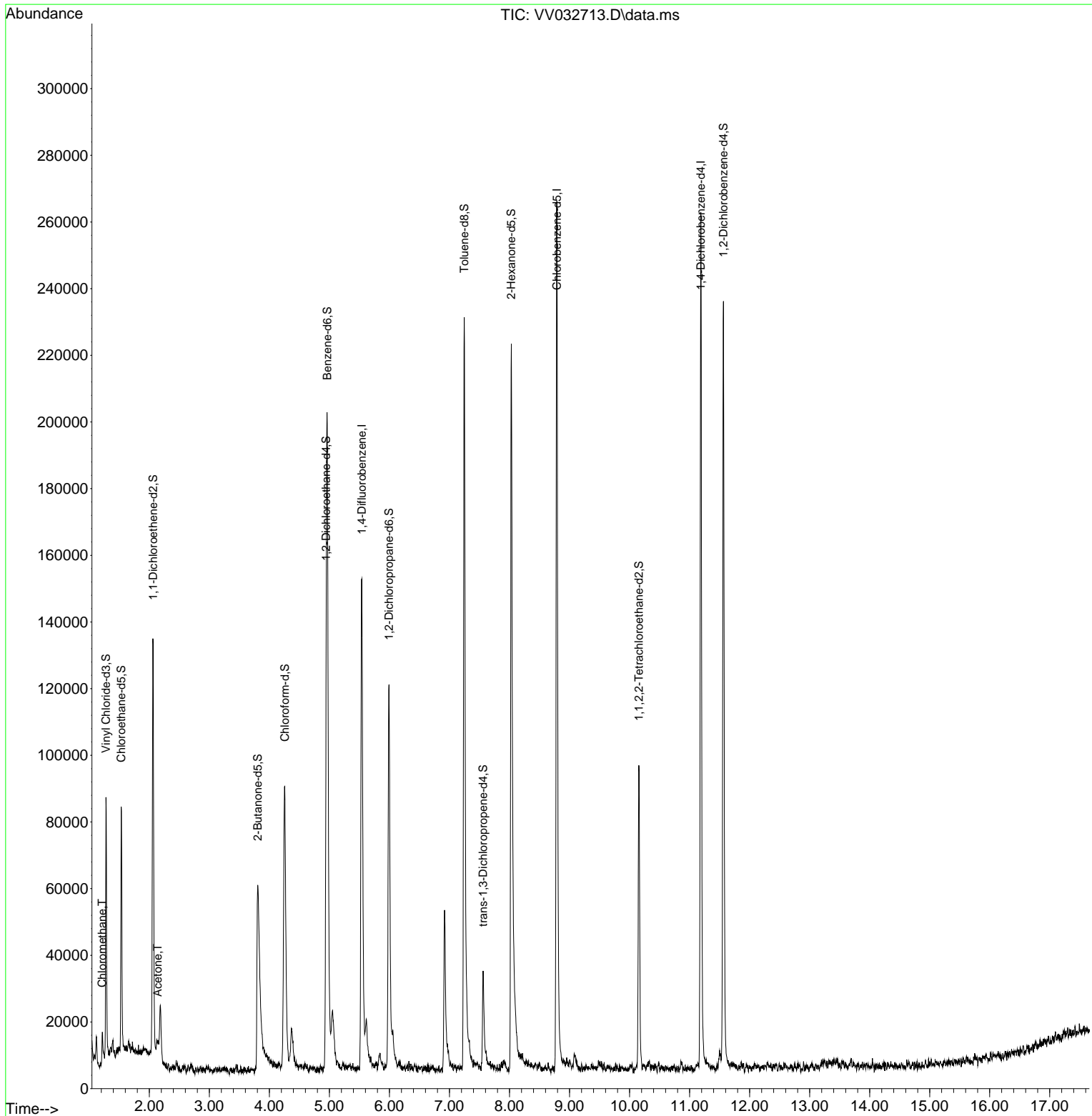
Compound	R.T.	QIon	Response	Conc	Units	Dev(Min)
-----						
Internal Standards						
1) 1,4-Difluorobenzene	5.539	114	131437	5.000	ug/L	0.00
28) Chlorobenzene-d5	8.789	117	152122	5.000	ug/L	0.00
58) 1,4-Dichlorobenzene-d4	11.188	152	66017	5.000	ug/L	0.00
System Monitoring Compounds						
4) Vinyl Chloride-d3	1.278	65	49808	4.614	ug/L	0.00
Spiked Amount	5.000	Range 40 - 130	Recovery	=	92.200%	
7) Chloroethane-d5	1.532	69	46873	5.110	ug/L	0.00
Spiked Amount	5.000	Range 65 - 130	Recovery	=	102.200%	
11) 1,1-Dichloroethene-d2	2.063	65	21613	4.461	ug/L	0.00
Spiked Amount	5.000	Range 60 - 125	Recovery	=	89.200%	
20) 2-Butanone-d5	3.806	46	91513	39.258	ug/L	0.00
Spiked Amount	50.000	Range 40 - 130	Recovery	=	78.520%	
24) Chloroform-d	4.256	84	90351	5.041	ug/L	0.00
Spiked Amount	5.000	Range 70 - 125	Recovery	=	100.800%	
26) 1,2-Dichloroethane-d4	4.947	65	47541	5.372	ug/L	0.00
Spiked Amount	5.000	Range 70 - 130	Recovery	=	107.400%	
32) Benzene-d6	4.963	84	178704	4.934	ug/L	0.00
Spiked Amount	5.000	Range 70 - 125	Recovery	=	98.600%	
36) 1,2-Dichloropropane-d6	5.992	67	53947	5.144	ug/L	0.00
Spiked Amount	5.000	Range 60 - 140	Recovery	=	102.800%	
41) Toluene-d8	7.246	98	164433	4.479	ug/L	0.00
Spiked Amount	5.000	Range 70 - 130	Recovery	=	89.600%	
43) trans-1,3-Dichloroprop...	7.561	79	19161	4.140	ug/L	0.00
Spiked Amount	5.000	Range 55 - 130	Recovery	=	82.800%	
46) 2-Hexanone-d5	8.031	63	76899	41.928	ug/L	0.00
Spiked Amount	50.000	Range 45 - 130	Recovery	=	83.860%	
56) 1,1,2,2-Tetrachloroeth...	10.156	84	44443	4.765	ug/L	0.00
Spiked Amount	5.000	Range 65 - 120	Recovery	=	95.400%	
66) 1,2-Dichlorobenzene-d4	11.564	152	60058	5.571	ug/L	0.00
Spiked Amount	5.000	Range 80 - 120	Recovery	=	111.400%	
-----						
Target Compounds						Qvalue
3) Chloromethane	1.217	50	5983	0.376	ug/L	94
13) Acetone	2.140	43	5759	2.503	ug/L	77
-----						

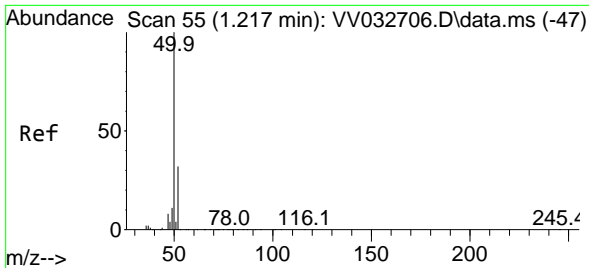
(#) = qualifier out of range (m) = manual integration (+) = signals summed

Data Path : Z:\voasrv\HPCHEM1\MSVOA\_V\Data\VV102723\  
 Data File : VV032713.D  
 Acq On : 28 Oct 2023 03:26  
 Operator : SY/MD  
 Sample : 05055-21  
 Misc : 25.0mL/MSVOA\_V/WATER  
 ALS Vial : 45 Sample Multiplier: 1

Instrument :  
 MSVOA\_V  
 ClientSampleId :

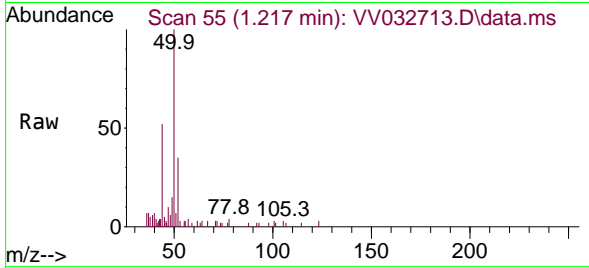
Quant Time: Oct 28 05:11:25 2023  
 Quant Method : Z:\voasrv\HPCHEM1\MSVOA\_V\Method\SFAMVTR102723WMA.M  
 Quant Title : TRACE VOA SFAM1.0  
 QLast Update : Sat Oct 28 02:08:41 2023  
 Response via : Initial Calibration



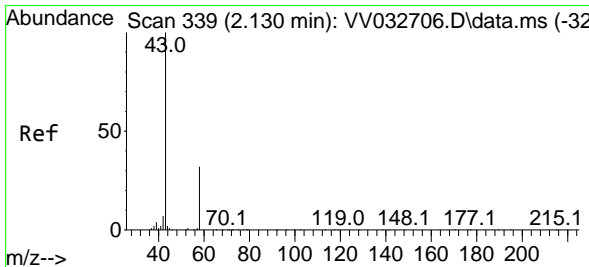
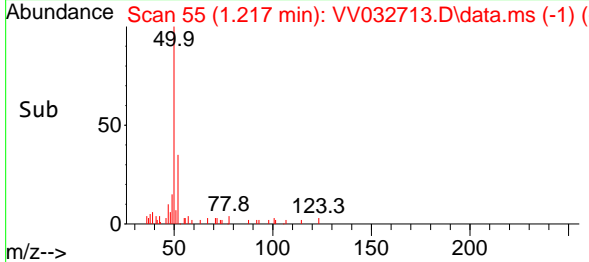
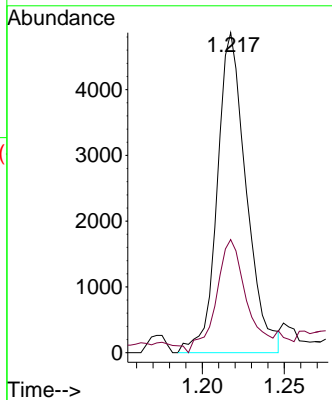


#3  
 Chloromethane  
 Concen: 0.376 ug/L  
 RT: 1.217 min Scan# 51  
 Delta R.T. 0.000 min  
 Lab File: VV032713.D  
 Acq: 28 Oct 2023 03:26

Instrument :  
 MSVOA\_V  
 ClientSampleId :



Tgt Ion: 50 Resp: 5983  
 Ion Ratio Lower Upper  
 50 100  
 52 35.3 22.3 41.5



#13  
 Acetone  
 Concen: 2.503 ug/L  
 RT: 2.140 min Scan# 342  
 Delta R.T. 0.010 min  
 Lab File: VV032713.D  
 Acq: 28 Oct 2023 03:26

Tgt Ion: 43 Resp: 5759  
 Ion Ratio Lower Upper  
 43 100  
 58 13.6 0.0 50.6

