

Data Path : Z:\voasrv\HPCHEM1\MSVOA_V\Data\VW102723\
 Data File : VV032721.D
 Acq On : 28 Oct 2023 06:41
 Operator : SY/MD
 Sample : 05019-09
 Misc : 25.0mL/MSVOA_V/WATER
 ALS Vial : 53 Sample Multiplier: 1

Instrument :
 MSVOA_V
 ClientSampleId :

Quant Time: Oct 30 01:13:50 2023
 Quant Method : Z:\voasrv\HPCHEM1\MSVOA_V\Method\SFAMVTR102723WMA.M
 Quant Title : TRACE VOA SFAM1.0
 QLast Update : Sat Oct 28 02:08:41 2023
 Response via : Initial Calibration

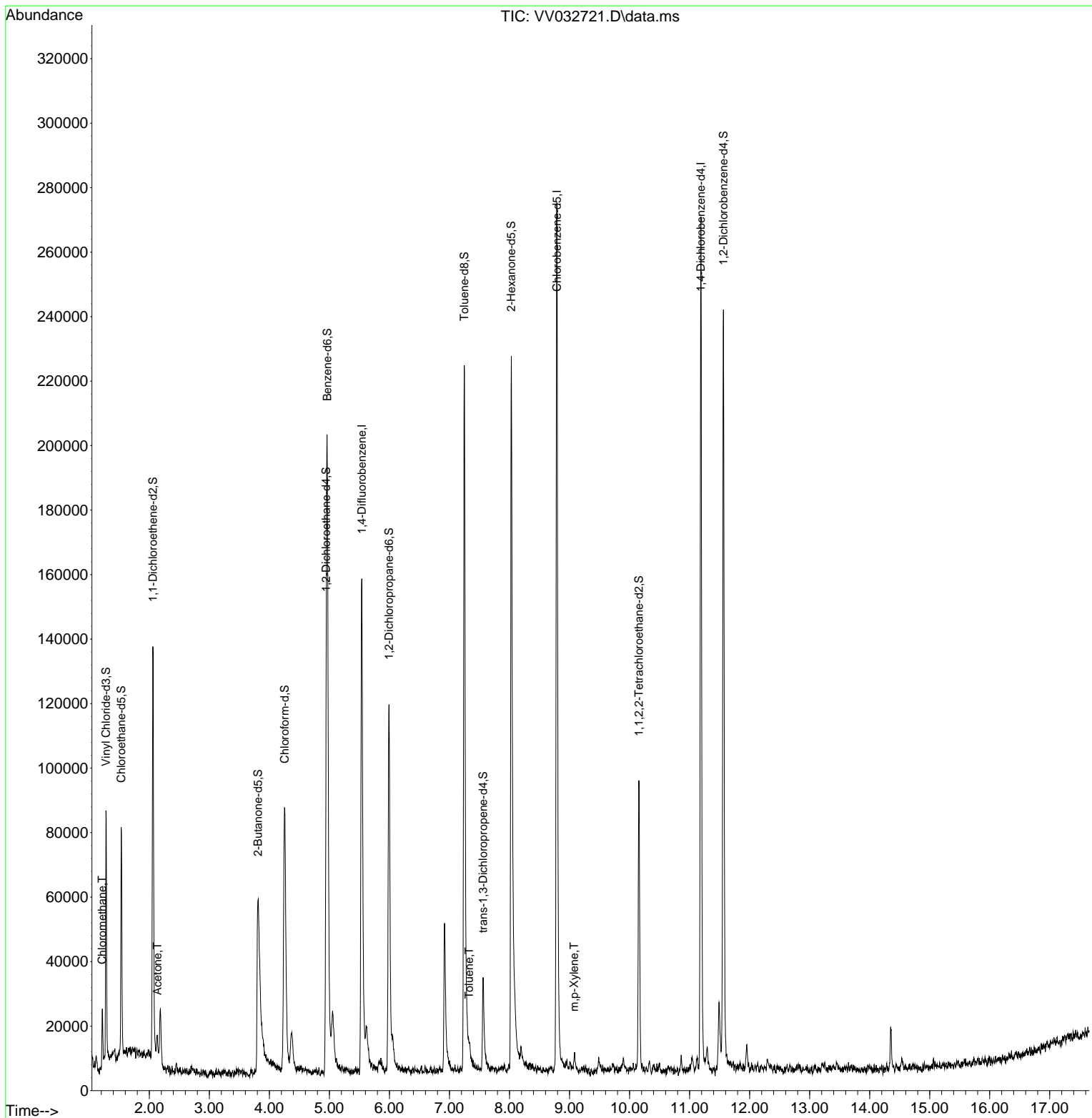
Compound	R.T.	QIon	Response	Conc	Units	Dev(Min)
Internal Standards						
1) 1,4-Difluorobenzene	5.538	114	133235	5.000	ug/L	0.00
28) Chlorobenzene-d5	8.789	117	157009	5.000	ug/L	0.00
58) 1,4-Dichlorobenzene-d4	11.188	152	67697	5.000	ug/L	0.00
System Monitoring Compounds						
4) Vinyl Chloride-d3	1.278	65	50398	4.606	ug/L	0.00
Spiked Amount	5.000	Range 40 - 130	Recovery	=	92.200%	
7) Chloroethane-d5	1.532	69	45174	4.858	ug/L	0.00
Spiked Amount	5.000	Range 65 - 130	Recovery	=	97.200%	
11) 1,1-Dichloroethene-d2	2.059	65	20900	4.255	ug/L	0.00
Spiked Amount	5.000	Range 60 - 125	Recovery	=	85.200%	
20) 2-Butanone-d5	3.809	46	97996	41.472	ug/L	0.00
Spiked Amount	50.000	Range 40 - 130	Recovery	=	82.940%	
24) Chloroform-d	4.252	84	88513	4.872	ug/L	0.00
Spiked Amount	5.000	Range 70 - 125	Recovery	=	97.400%	
26) 1,2-Dichloroethane-d4	4.947	65	44920	5.008	ug/L	0.00
Spiked Amount	5.000	Range 70 - 130	Recovery	=	100.200%	
32) Benzene-d6	4.963	84	178852	4.784	ug/L	0.00
Spiked Amount	5.000	Range 70 - 125	Recovery	=	95.600%	
36) 1,2-Dichloropropane-d6	5.992	67	53208	4.915	ug/L	0.00
Spiked Amount	5.000	Range 60 - 140	Recovery	=	98.400%	
41) Toluene-d8	7.246	98	158589	4.185	ug/L	0.00
Spiked Amount	5.000	Range 70 - 130	Recovery	=	83.800%	
43) trans-1,3-Dichloroprop...	7.561	79	19764	4.138	ug/L	0.00
Spiked Amount	5.000	Range 55 - 130	Recovery	=	82.800%	
46) 2-Hexanone-d5	8.030	63	76403	40.361	ug/L	0.00
Spiked Amount	50.000	Range 45 - 130	Recovery	=	80.720%	
56) 1,1,2,2-Tetrachloroeth...	10.156	84	43201	4.488	ug/L	0.00
Spiked Amount	5.000	Range 65 - 120	Recovery	=	89.800%	
66) 1,2-Dichlorobenzene-d4	11.564	152	59565	5.388	ug/L	0.00
Spiked Amount	5.000	Range 80 - 120	Recovery	=	107.800%	
Target Compounds						
3) Chloromethane	1.217	50	11854	0.735	ug/L	93
13) Acetone	2.137	43	9241	3.961	ug/L	96
42) Toluene	7.326	91	4925	0.086	ug/L	98
53) m,p-Xylene	9.079	106	1350	0.059	ug/L	91

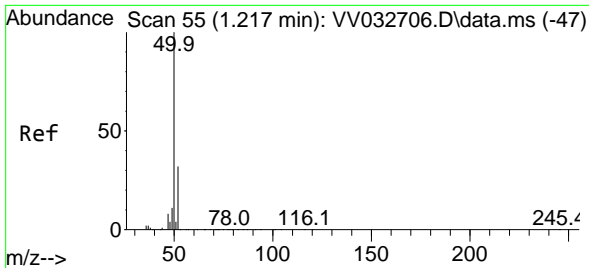
(#) = qualifier out of range (m) = manual integration (+) = signals summed

Data Path : Z:\voasrv\HPCHEM1\MSVOA_V\Data\VV102723\
 Data File : VV032721.D
 Acq On : 28 Oct 2023 06:41
 Operator : SY/MD
 Sample : 05019-09
 Misc : 25.0mL/MSVOA_V/WATER
 ALS Vial : 53 Sample Multiplier: 1

Instrument :
 MSVOA_V
 ClientSampleId :

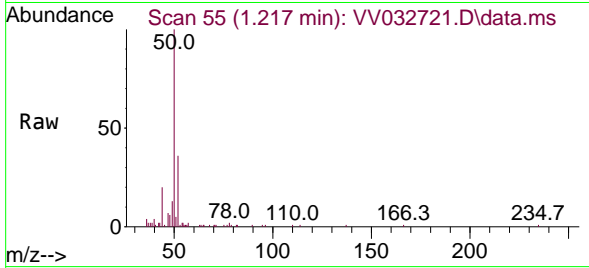
Quant Time: Oct 30 01:13:50 2023
 Quant Method : Z:\voasrv\HPCHEM1\MSVOA_V\Method\SFAMVTR102723WMA.M
 Quant Title : TRACE VOA SFAM1.0
 QLast Update : Sat Oct 28 02:08:41 2023
 Response via : Initial Calibration



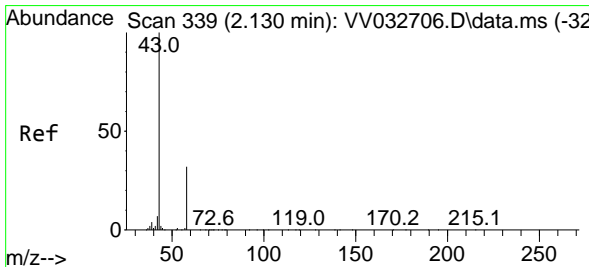
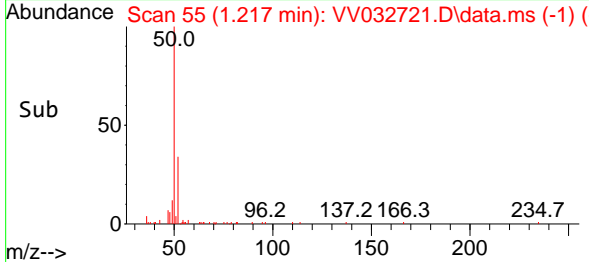
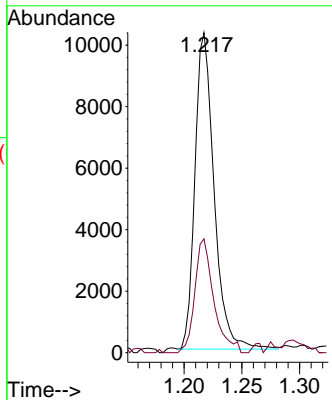


#3
 Chloromethane
 Concen: 0.735 ug/L
 RT: 1.217 min Scan# 51
 Delta R.T. 0.000 min
 Lab File: VV032721.D
 Acq: 28 Oct 2023 06:41

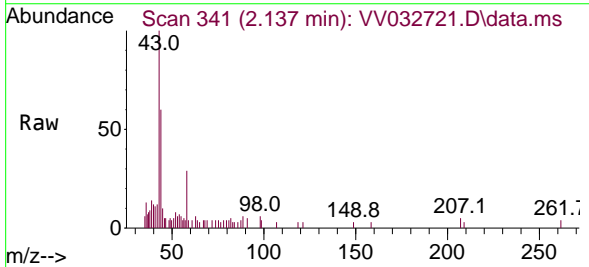
Instrument :
 MSVOA_V
 ClientSampleId :



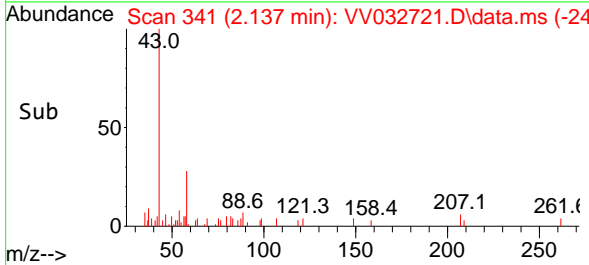
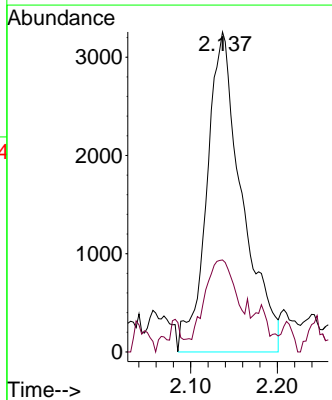
Tgt Ion: 50 Resp: 11854
 Ion Ratio Lower Upper
 50 100
 52 35.6 22.3 41.5

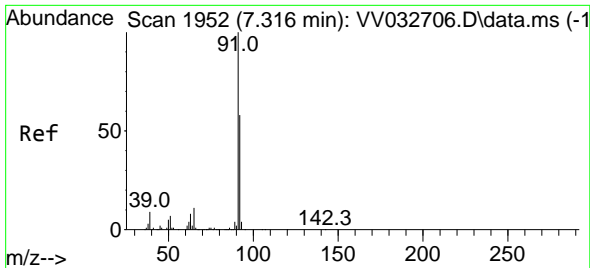


#13
 Acetone
 Concen: 3.961 ug/L
 RT: 2.137 min Scan# 341
 Delta R.T. 0.006 min
 Lab File: VV032721.D
 Acq: 28 Oct 2023 06:41



Tgt Ion: 43 Resp: 9241
 Ion Ratio Lower Upper
 43 100
 58 23.2 0.0 50.6

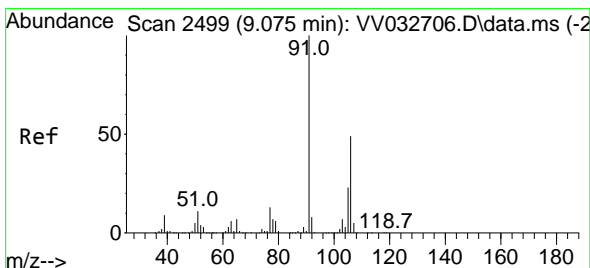
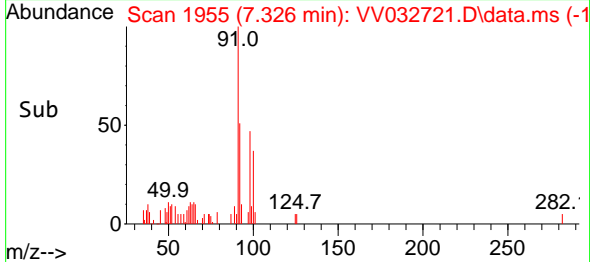
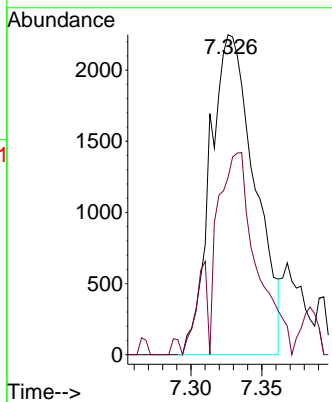
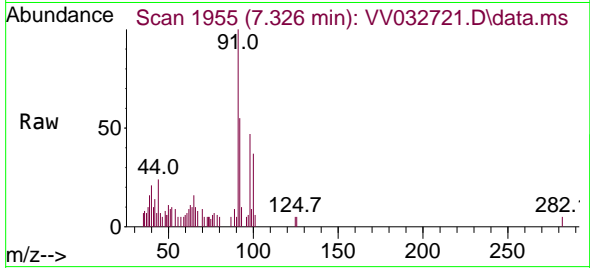




#42
 Toluene
 Concen: 0.086 ug/L
 RT: 7.326 min Scan# 1955
 Delta R.T. 0.010 min
 Lab File: VV032721.D
 Acq: 28 Oct 2023 06:41

Instrument : MSVOA_V
 ClientSampleId :

Tgt Ion: 91 Resp: 4925
 Ion Ratio Lower Upper
 91 100
 92 55.4 39.9 74.1



#53
 m,p-Xylene
 Concen: 0.059 ug/L
 RT: 9.079 min Scan# 2500
 Delta R.T. 0.003 min
 Lab File: VV032721.D
 Acq: 28 Oct 2023 06:41

Tgt Ion: 106 Resp: 1350
 Ion Ratio Lower Upper
 106 100
 91 185.6 139.3 258.7

