

Data Path : Z:\voasrv\HPCHEM1\MSVOA_V\Data\VW102723\
 Data File : VV032728.D
 Acq On : 28 Oct 2023 09:29
 Operator : SY/MD
 Sample : 05019-02MS
 Misc : 25.0mL/MSVOA_V/WATER
 ALS Vial : 60 Sample Multiplier: 1

Instrument :
 MSVOA_V
 ClientSampleId :
 A49B9MS

Quant Time: Oct 30 01:15:23 2023
 Quant Method : Z:\voasrv\HPCHEM1\MSVOA_V\Method\SFAMVTR102723WMA.M
 Quant Title : TRACE VOA SFAM1.0
 QLast Update : Sat Oct 28 02:08:41 2023
 Response via : Initial Calibration

Compound	R.T.	QIon	Response	Conc	Units	Dev(Min)
Internal Standards						
1) 1,4-Difluorobenzene	5.539	114	137808	5.000	ug/L	0.00
28) Chlorobenzene-d5	8.789	117	161765	5.000	ug/L	0.00
58) 1,4-Dichlorobenzene-d4	11.188	152	88291	5.000	ug/L	0.00
System Monitoring Compounds						
4) Vinyl Chloride-d3	1.278	65	48824	4.314	ug/L	0.00
Spiked Amount	5.000	Range 40 - 130	Recovery	=	86.200%	
7) Chloroethane-d5	1.536	69	47102	4.897	ug/L	0.00
Spiked Amount	5.000	Range 65 - 130	Recovery	=	98.000%	
11) 1,1-Dichloroethene-d2	2.060	65	20996	4.133	ug/L	0.00
Spiked Amount	5.000	Range 60 - 125	Recovery	=	82.600%	
20) 2-Butanone-d5	3.802	46	97784	40.009	ug/L	0.00
Spiked Amount	50.000	Range 40 - 130	Recovery	=	80.020%	
24) Chloroform-d	4.252	84	96824	5.152	ug/L	0.00
Spiked Amount	5.000	Range 70 - 125	Recovery	=	103.000%	
26) 1,2-Dichloroethane-d4	4.947	65	45263	4.878	ug/L	0.00
Spiked Amount	5.000	Range 70 - 130	Recovery	=	97.600%	
32) Benzene-d6	4.963	84	180971	4.699	ug/L	0.00
Spiked Amount	5.000	Range 70 - 125	Recovery	=	94.000%	
36) 1,2-Dichloropropane-d6	5.992	67	51272	4.597	ug/L	0.00
Spiked Amount	5.000	Range 60 - 140	Recovery	=	92.000%	
41) Toluene-d8	7.246	98	189748	4.860	ug/L	0.00
Spiked Amount	5.000	Range 70 - 130	Recovery	=	97.200%	
43) trans-1,3-Dichloroprop...	7.558	79	21347	4.338	ug/L	0.00
Spiked Amount	5.000	Range 55 - 130	Recovery	=	86.800%	
46) 2-Hexanone-d5	8.027	63	83580	42.854	ug/L	0.00
Spiked Amount	50.000	Range 45 - 130	Recovery	=	85.700%	
56) 1,1,2,2-Tetrachloroeth...	10.156	84	44489	4.486	ug/L	0.00
Spiked Amount	5.000	Range 65 - 120	Recovery	=	89.800%	
66) 1,2-Dichlorobenzene-d4	11.561	152	66228	4.594	ug/L	0.00
Spiked Amount	5.000	Range 80 - 120	Recovery	=	91.800%	
Target Compounds						
2) Dichlorodifluoromethane	1.108	85	69395	4.906	ug/L	99
3) Chloromethane	1.217	50	79496	4.764	ug/L	100
5) Vinyl chloride	1.285	62	77333	4.670	ug/L	100
6) Bromomethane	1.491	94	44427	4.597	ug/L	100
8) Chloroethane	1.552	64	54249	5.009	ug/L	99
9) Trichlorofluoromethane	1.716	101	106855	4.793	ug/L	99
10) 1,1,2-Trichloro-1,2,2-...	2.069	101	61333	4.665	ug/L	97
12) 1,1-Dichloroethene	2.069	96	58987	4.789	ug/L	97
13) Acetone	2.130	43	97458	40.393	ug/L	87
14) Carbon disulfide	2.243	76	179020	4.588	ug/L	99
15) Methyl Acetate	2.388	43	16446	3.404	ug/L	98
16) Methylene chloride	2.449	84	67043	4.422	ug/L	98
17) Methyl tert-butyl Ether	2.706	73	128737	4.841	ug/L	98
18) trans-1,2-Dichloroethene	2.696	96	60894	5.000	ug/L	99
19) 1,1-Dichloroethane	3.114	63	108570	5.028	ug/L	97
21) 2-Butanone	3.883	43	139851	43.842	ug/L	96
22) cis-1,2-Dichloroethene	3.818	96	62962	5.099	ug/L	98
23) Bromochloromethane	4.153	128	30413	5.295	ug/L	96
25) Chloroform	4.281	83	123467	5.259	ug/L	98

Data Path : Z:\voasrv\HPCHEM1\MSVOA_V\Data\VW102723\
 Data File : VW032728.D
 Acq On : 28 Oct 2023 09:29
 Operator : SY/MD
 Sample : 05019-02MS
 Misc : 25.0mL/MSVOA_V/WATER
 ALS Vial : 60 Sample Multiplier: 1

Instrument :
 MSVOA_V
 ClientSampleId :
 A49B9MS

Quant Time: Oct 30 01:15:23 2023
 Quant Method : Z:\voasrv\HPCHEM1\MSVOA_V\Method\SFAMVTR102723WMA.M
 Quant Title : TRACE VOA SFAM1.0
 QLast Update : Sat Oct 28 02:08:41 2023
 Response via : Initial Calibration

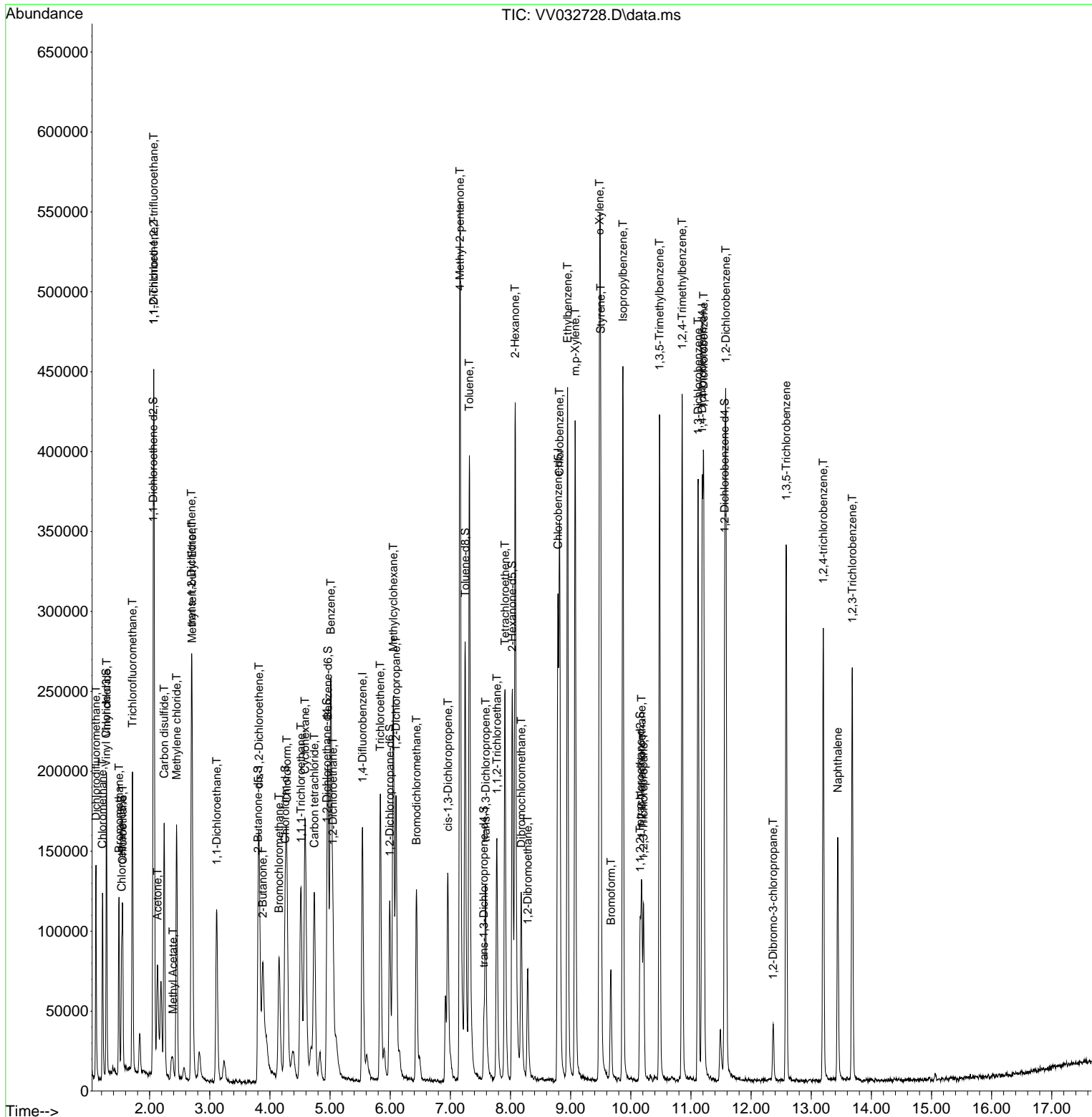
Compound	R.T.	QIon	Response	Conc	Units	Dev(Min)
27) 1,2-Dichloroethane	5.047	62	73967	5.069	ug/L	97
29) 1,1,1-Trichloroethane	4.516	97	99277	4.758	ug/L	98
30) Cyclohexane	4.584	56	76625	4.357	ug/L	95
31) Carbon tetrachloride	4.738	117	88545	4.878	ug/L	97
33) Benzene	5.011	78	251263	4.928	ug/L	100
34) Trichloroethene	5.834	95	62030	4.554	ug/L	98
35) Methylcyclohexane	6.053	83	88835	4.364	ug/L	97
37) 1,2-Dichloropropane	6.095	63	58247	4.734	ug/L	99
38) Bromodichloromethane	6.436	83	82909	4.561	ug/L	98
39) cis-1,3-Dichloropropene	6.960	75	84432	4.507	ug/L	98
40) 4-Methyl-2-pentanone	7.159	43	386262	48.654	ug/L	100
42) Toluene	7.317	91	299837	5.061	ug/L	99
44) trans-1,3-Dichloropropene	7.587	75	73502	4.560	ug/L	99
45) 1,1,2-Trichloroethane	7.773	97	50020	4.814	ug/L	99
47) Tetrachloroethene	7.908	164	54878	4.559	ug/L	98
48) 2-Hexanone	8.079	43	270348	46.559	ug/L	99
49) Dibromochloromethane	8.178	129	59893	4.859	ug/L	97
50) 1,2-Dibromoethane	8.288	107	47960	4.945	ug/L	100
51) Chlorobenzene	8.815	112	187463	4.790	ug/L	98
52) Ethylbenzene	8.950	91	301703	4.844	ug/L	99
53) m,p-Xylene	9.075	106	117898	4.999	ug/L	97
54) o-Xylene	9.481	106	112832	4.933	ug/L	100
55) Styrene	9.500	104	188836	4.983	ug/L	99
57) 1,1,2,2-Tetrachloroethane	10.182	83	57186	4.718	ug/L	96
59) Bromoform	9.670	173	31929	4.609	ug/L	99
60) Isopropylbenzene	9.870	105	279680	4.667	ug/L	99
61) 1,2,3-Trichloropropane	10.214	75	41429	4.437	ug/L	97
62) 1,3,5-Trimethylbenzene	10.477	105	215588	4.401	ug/L	99
63) 1,2,4-Trimethylbenzene	10.854	105	221357	4.573	ug/L	100
64) 1,3-Dichlorobenzene	11.120	146	149062	4.636	ug/L	100
65) 1,4-Dichlorobenzene	11.210	146	144451	4.526	ug/L	98
67) 1,2-Dichlorobenzene	11.580	146	141052	4.770	ug/L	97
68) 1,2-Dibromo-3-chloropr...	12.368	75	9051	4.056	ug/L	95
69) 1,3,5-Trichlorobenzene	12.583	180	98356	4.286	ug/L	99
70) 1,2,4-trichlorobenzene	13.201	180	81001	4.160	ug/L	99
71) Naphthalene	13.442	128	117773	3.816	ug/L	99
72) 1,2,3-Trichlorobenzene	13.683	180	75316	4.399	ug/L	100

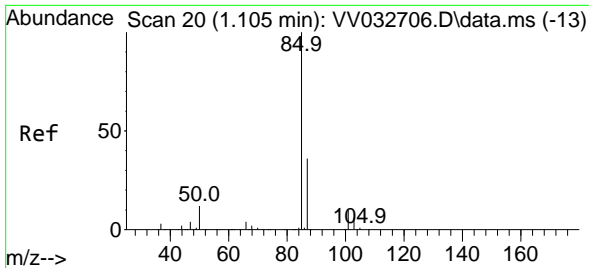
(#) = qualifier out of range (m) = manual integration (+) = signals summed

Data Path : Z:\voasrv\HPCHEM1\MSVOA_V\Data\VV102723\
 Data File : VV032728.D
 Acq On : 28 Oct 2023 09:29
 Operator : SY/MD
 Sample : 05019-02MS
 Misc : 25.0mL/MSVOA_V/WATER
 ALS Vial : 60 Sample Multiplier: 1

Instrument :
 MSVOA_V
 ClientSampleId :
 A49B9MS

Quant Time: Oct 30 01:15:23 2023
 Quant Method : Z:\voasrv\HPCHEM1\MSVOA_V\Method\SFAMVTR102723WMA.M
 Quant Title : TRACE VOA SFAM1.0
 QLast Update : Sat Oct 28 02:08:41 2023
 Response via : Initial Calibration

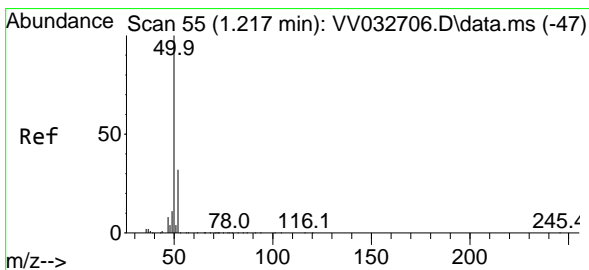
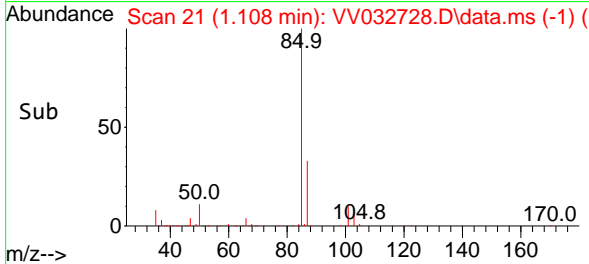
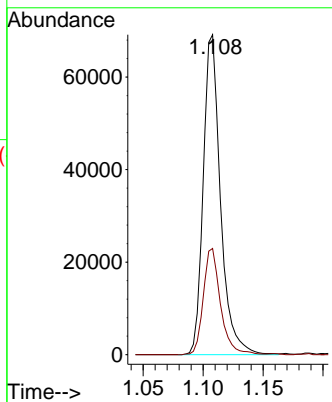
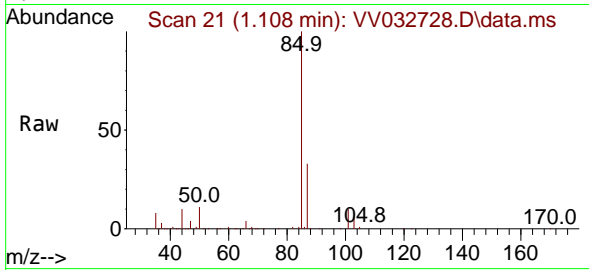




#2
 Dichlorodifluoromethane
 Concen: 4.906 ug/L
 RT: 1.108 min Scan# 21
 Delta R.T. 0.003 min
 Lab File: VV032728.D
 Acq: 28 Oct 2023 09:29

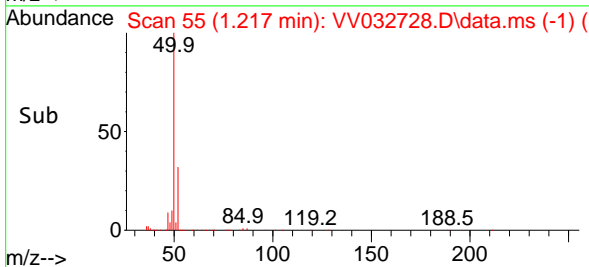
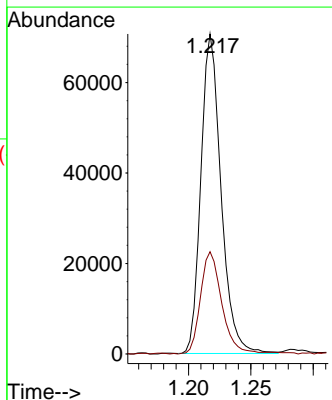
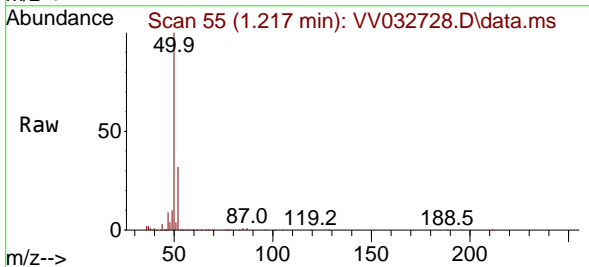
Instrument :
 MSVOA_V
 ClientSampleId :
 A49B9MS

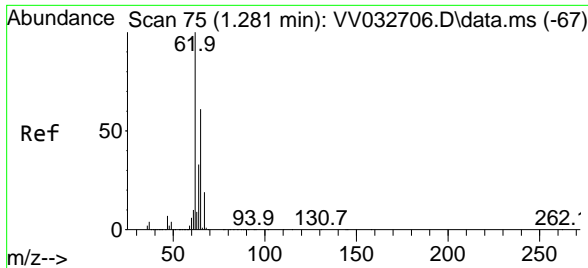
Tgt Ion: 85 Resp: 69395
 Ion Ratio Lower Upper
 85 100
 87 33.1 25.9 38.9



#3
 Chloromethane
 Concen: 4.764 ug/L
 RT: 1.217 min Scan# 55
 Delta R.T. 0.000 min
 Lab File: VV032728.D
 Acq: 28 Oct 2023 09:29

Tgt Ion: 50 Resp: 79496
 Ion Ratio Lower Upper
 50 100
 52 31.9 22.3 41.5

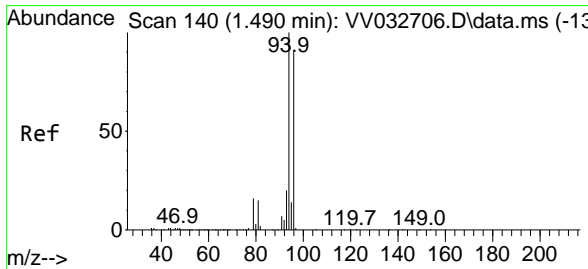
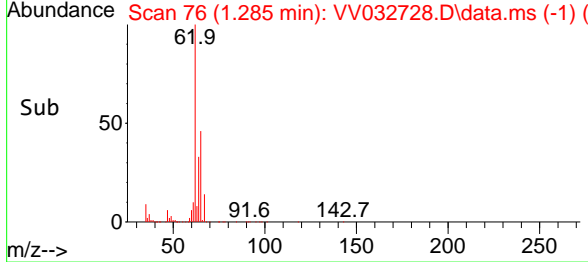
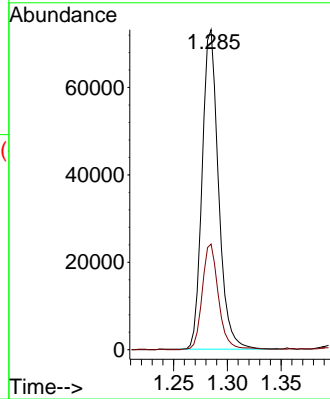
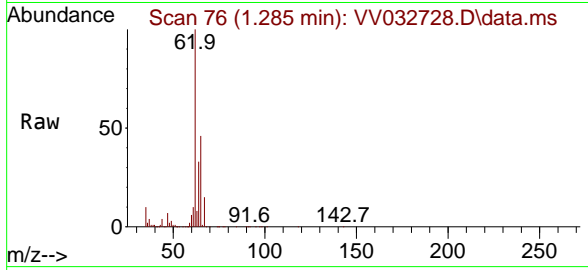




#5
 Vinyl chloride
 Concen: 4.670 ug/L
 RT: 1.285 min Scan# 70
 Delta R.T. 0.003 min
 Lab File: VV032728.D
 Acq: 28 Oct 2023 09:29

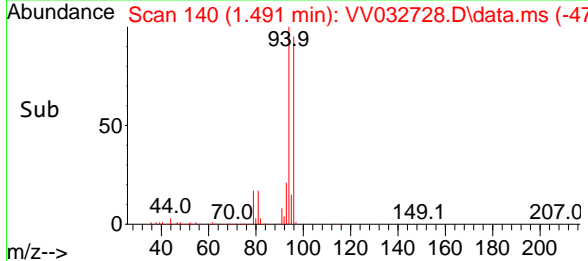
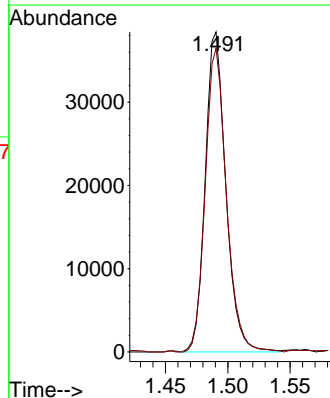
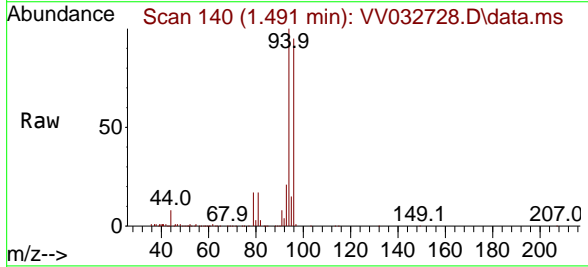
Instrument : MSVOA_V
 ClientSampleId : A49B9MS

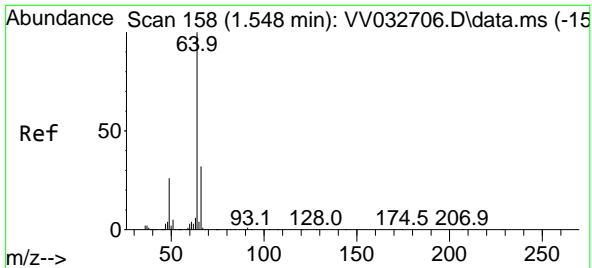
Tgt Ion: 62 Resp: 77333
 Ion Ratio Lower Upper
 62 100
 64 33.0 23.2 43.0



#6
 Bromomethane
 Concen: 4.597 ug/L
 RT: 1.491 min Scan# 140
 Delta R.T. 0.000 min
 Lab File: VV032728.D
 Acq: 28 Oct 2023 09:29

Tgt Ion: 94 Resp: 44427
 Ion Ratio Lower Upper
 94 100
 96 94.9 66.4 123.2

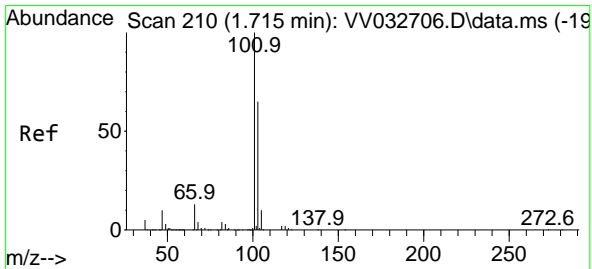
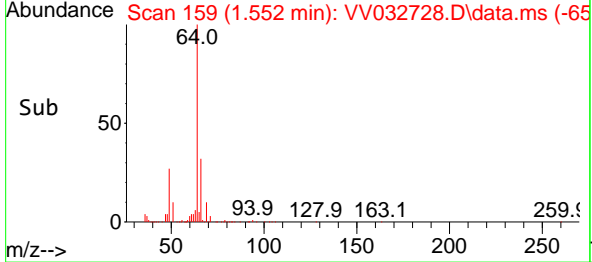
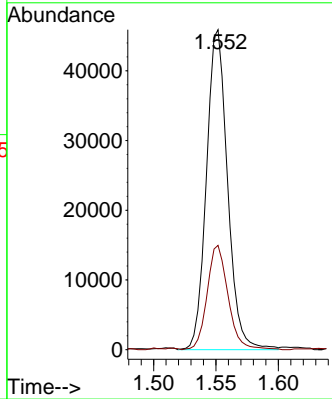
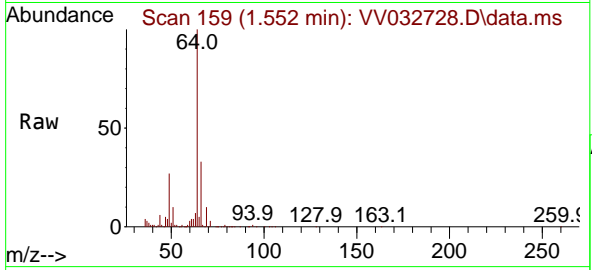




#8
 Chloroethane
 Concen: 5.009 ug/L
 RT: 1.552 min Scan# 11
 Delta R.T. 0.003 min
 Lab File: VV032728.D
 Acq: 28 Oct 2023 09:29

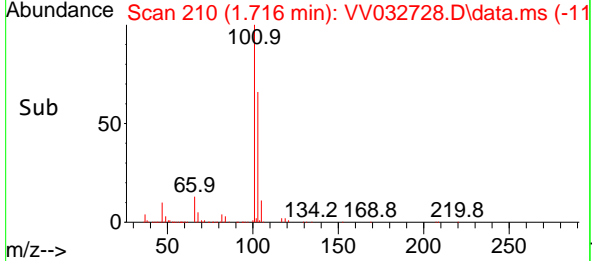
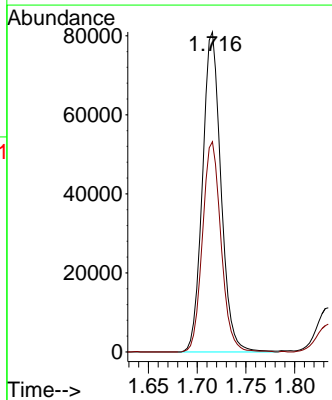
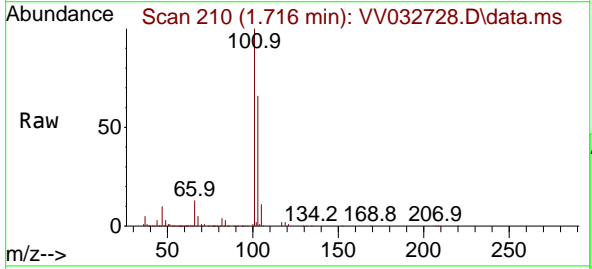
Instrument : MSVOA_V
 ClientSampleId : A49B9MS

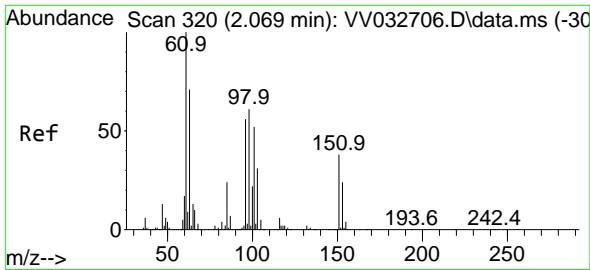
Tgt Ion: 64 Resp: 54249
 Ion Ratio Lower Upper
 64 100
 66 32.6 22.3 41.5



#9
 Trichlorofluoromethane
 Concen: 4.793 ug/L
 RT: 1.716 min Scan# 210
 Delta R.T. 0.000 min
 Lab File: VV032728.D
 Acq: 28 Oct 2023 09:29

Tgt Ion:101 Resp: 106855
 Ion Ratio Lower Upper
 101 100
 103 65.9 52.1 78.1

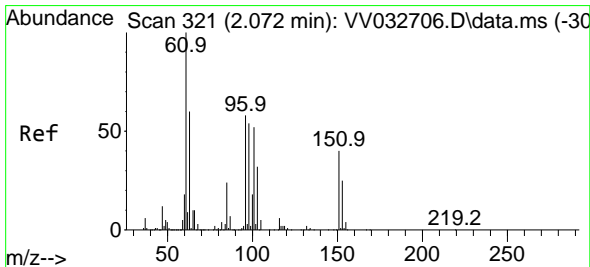
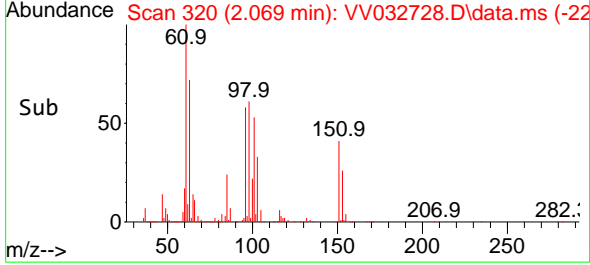
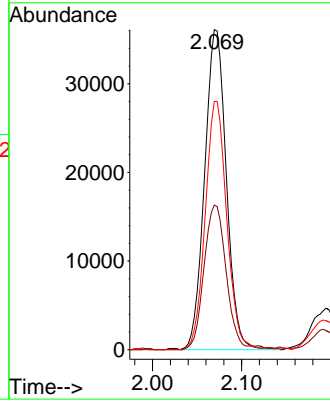
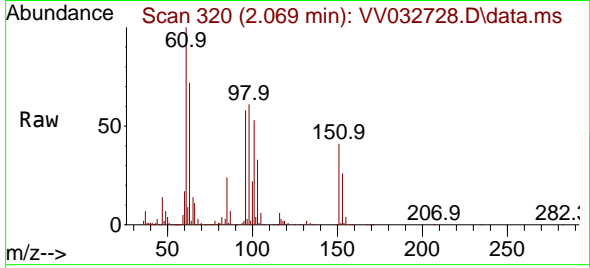




#10
 1,1,2-Trichloro-1,2,2-trifluoroethane
 Concen: 4.665 ug/L
 RT: 2.069 min Scan# 31
 Delta R.T. 0.000 min
 Lab File: VV032728.D
 Acq: 28 Oct 2023 09:29

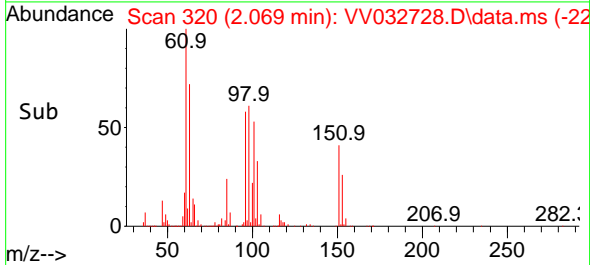
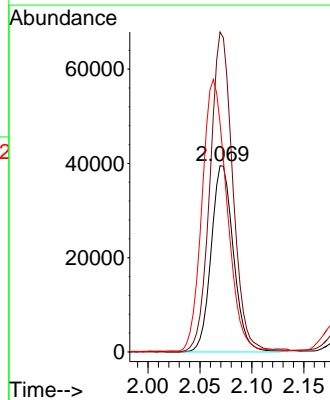
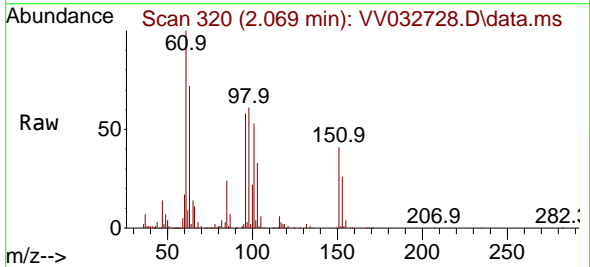
Instrument :
 MSVOA_V
 ClientSampleId :
 A49B9MS

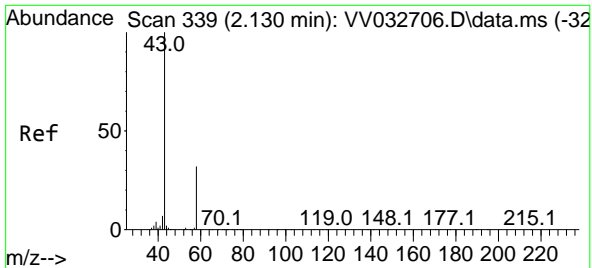
Tgt Ion	Resp	Lower	Upper
101	61333		
101	100		
85	46.2	36.2	54.4
151	76.5	59.0	88.6



#12
 1,1-Dichloroethene
 Concen: 4.789 ug/L
 RT: 2.069 min Scan# 320
 Delta R.T. -0.003 min
 Lab File: VV032728.D
 Acq: 28 Oct 2023 09:29

Tgt Ion	Resp	Lower	Upper
96	58987		
96	100		
61	171.9	122.3	227.1
63	123.1	89.4	166.0

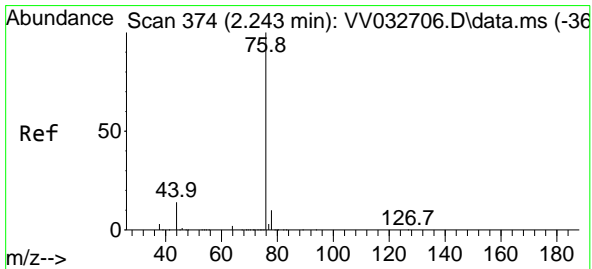
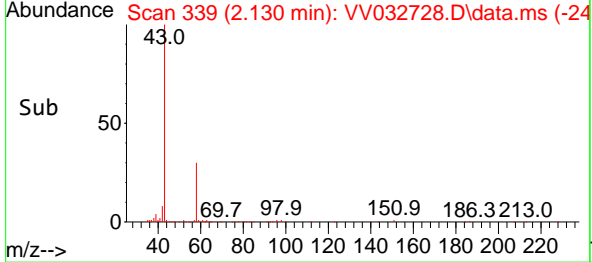
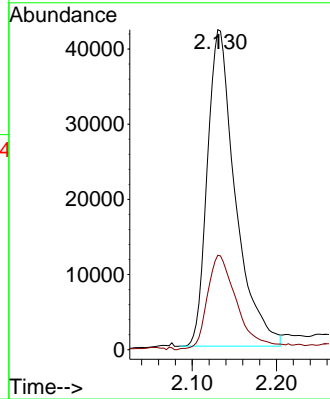
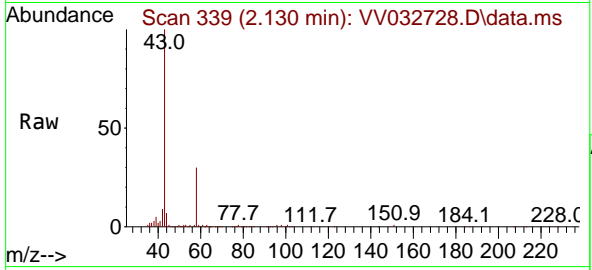




#13
 Acetone
 Concen: 40.393 ug/L
 RT: 2.130 min Scan# 311
 Delta R.T. 0.000 min
 Lab File: VV032728.D
 Acq: 28 Oct 2023 09:29

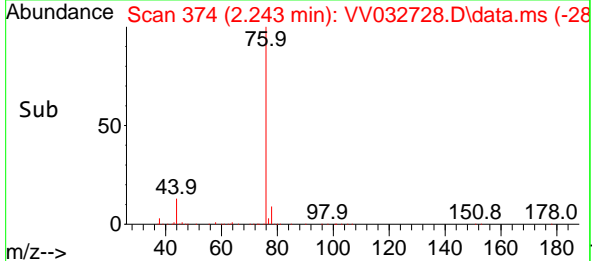
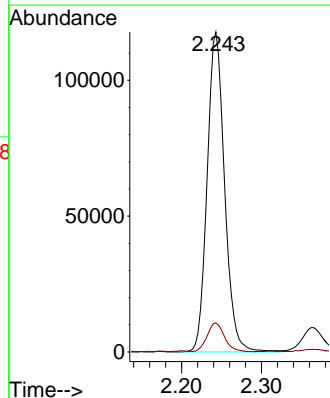
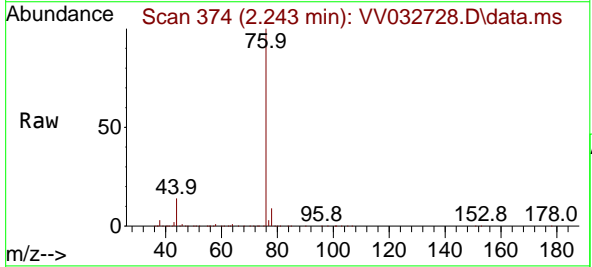
Instrument : MSVOA_V
 ClientSampleId : A49B9MS

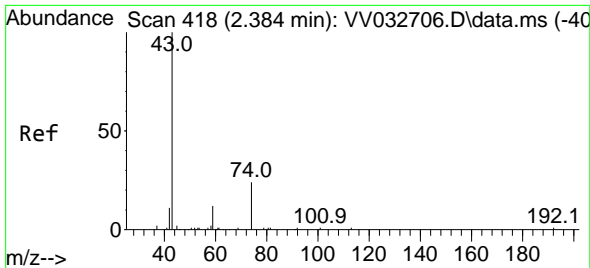
Tgt Ion: 43 Resp: 97458
 Ion Ratio Lower Upper
 43 100
 58 31.8 0.0 50.6



#14
 Carbon disulfide
 Concen: 4.588 ug/L
 RT: 2.243 min Scan# 374
 Delta R.T. 0.000 min
 Lab File: VV032728.D
 Acq: 28 Oct 2023 09:29

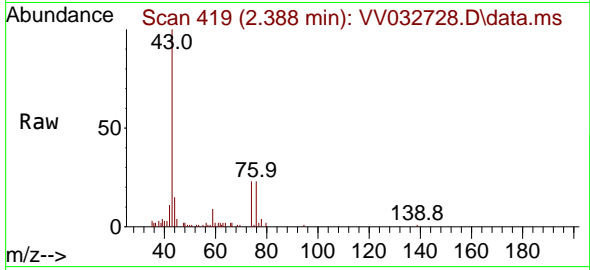
Tgt Ion: 76 Resp: 179020
 Ion Ratio Lower Upper
 76 100
 78 9.1 7.4 11.2



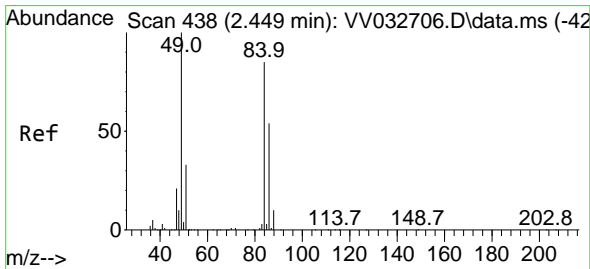
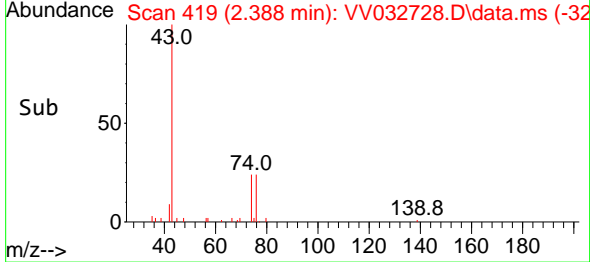
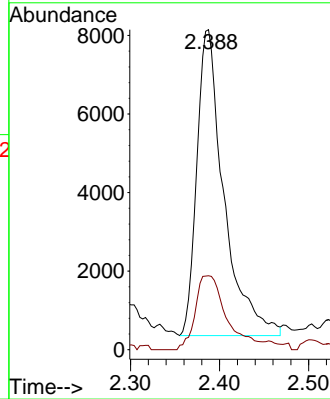


#15
 Methyl Acetate
 Concen: 3.404 ug/L
 RT: 2.388 min Scan# 418
 Delta R.T. 0.003 min
 Lab File: VV032728.D
 Acq: 28 Oct 2023 09:29

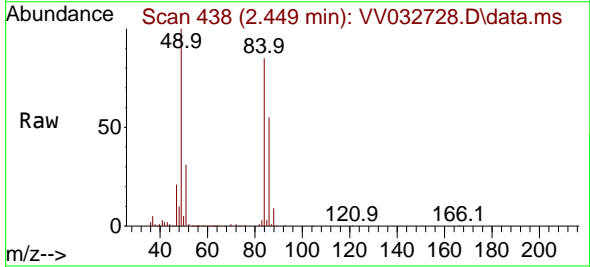
Instrument : MSVOA_V
 ClientSampleId : A49B9MS



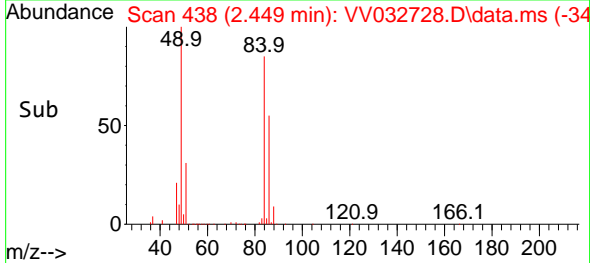
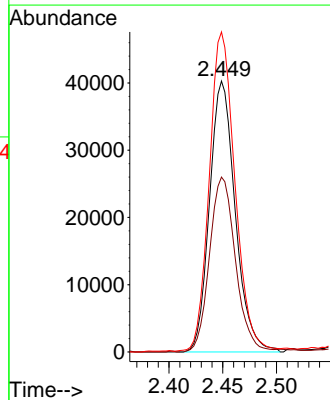
Tgt Ion: 43 Resp: 16446
 Ion Ratio Lower Upper
 43 100
 74 28.1 23.1 34.7

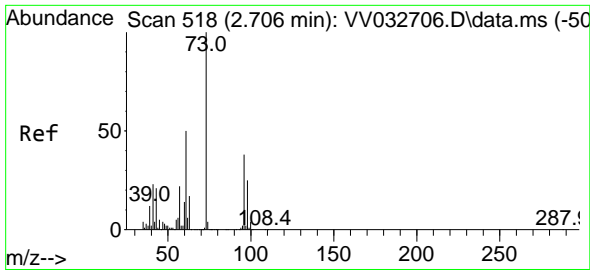


#16
 Methylene chloride
 Concen: 4.422 ug/L
 RT: 2.449 min Scan# 438
 Delta R.T. 0.000 min
 Lab File: VV032728.D
 Acq: 28 Oct 2023 09:29



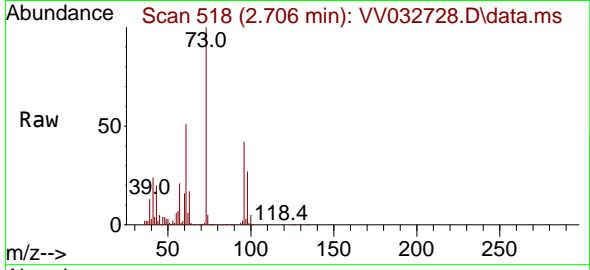
Tgt Ion: 84 Resp: 67043
 Ion Ratio Lower Upper
 84 100
 86 64.6 44.8 83.2
 49 118.1 81.1 150.5





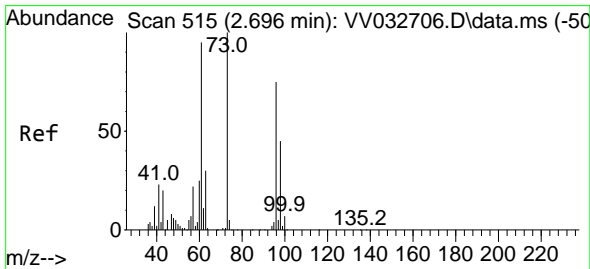
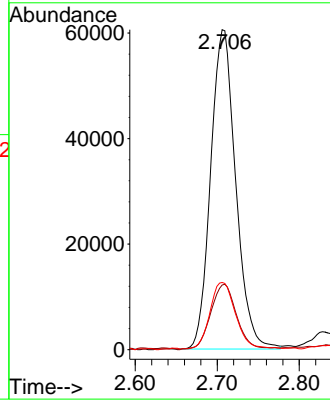
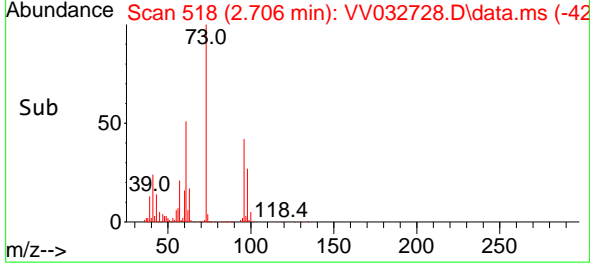
#17
Methyl tert-butyl Ether
Concen: 4.841 ug/L
RT: 2.706 min Scan# 518
Delta R.T. 0.000 min
Lab File: VV032728.D
Acq: 28 Oct 2023 09:29

Instrument :
MSVOA_V
ClientSampleId :
A49B9MS

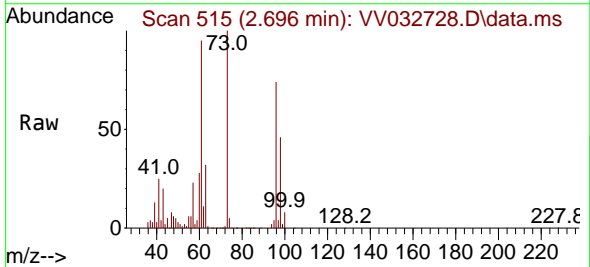


Tgt Ion: 73 Resp: 128737

Ion	Ratio	Lower	Upper
73	100		
43	21.3	16.6	24.8
57	21.2	18.1	27.1

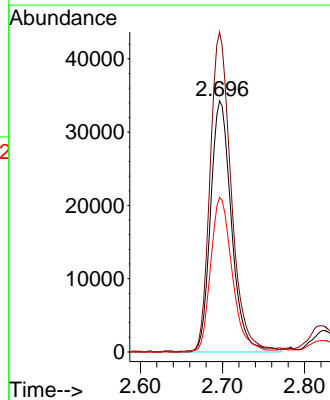
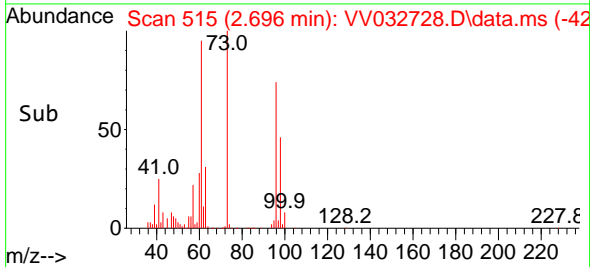


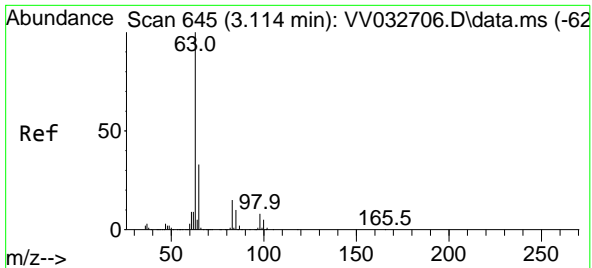
#18
trans-1,2-Dichloroethene
Concen: 5.000 ug/L
RT: 2.696 min Scan# 515
Delta R.T. 0.000 min
Lab File: VV032728.D
Acq: 28 Oct 2023 09:29



Tgt Ion: 96 Resp: 60894

Ion	Ratio	Lower	Upper
96	100		
61	127.4	88.7	164.7
98	61.5	44.4	82.4



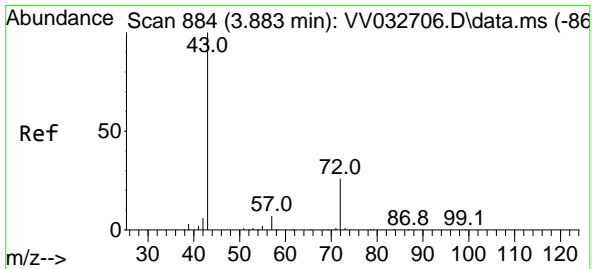
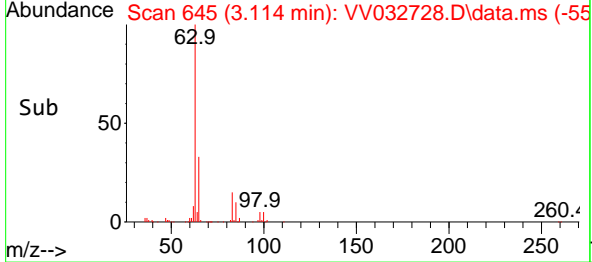
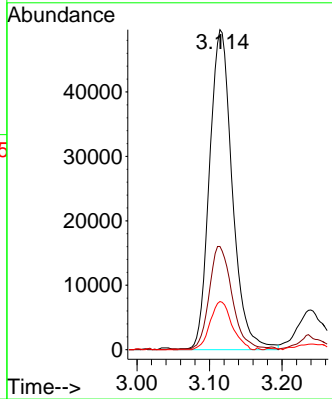
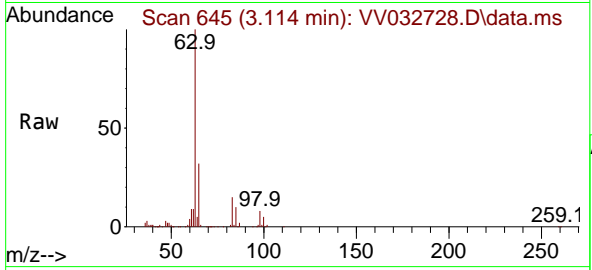


#19
 1,1-Dichloroethane
 Concen: 5.028 ug/L
 RT: 3.114 min Scan# 645
 Delta R.T. 0.000 min
 Lab File: VV032728.D
 Acq: 28 Oct 2023 09:29

Instrument : MSVOA_V
 ClientSampleId : A49B9MS

Tgt Ion: 63 Resp: 108570

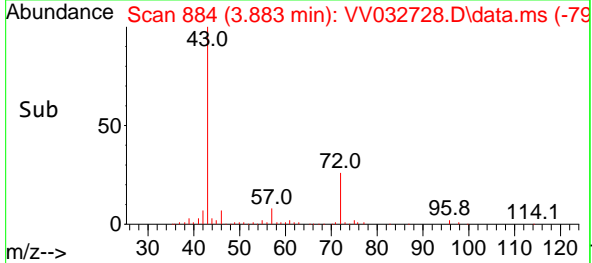
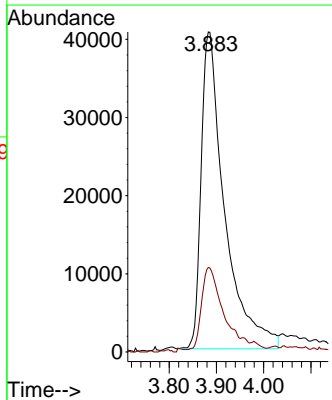
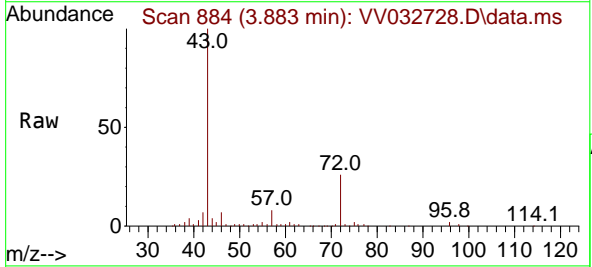
Ion	Ratio	Lower	Upper
63	100		
65	32.2	21.5	39.9
83	15.0	9.2	17.0

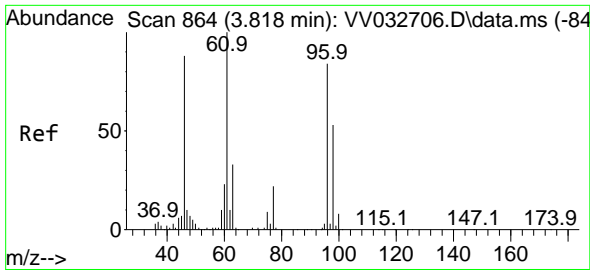


#21
 2-Butanone
 Concen: 43.842 ug/L
 RT: 3.883 min Scan# 884
 Delta R.T. 0.000 min
 Lab File: VV032728.D
 Acq: 28 Oct 2023 09:29

Tgt Ion: 43 Resp: 139851

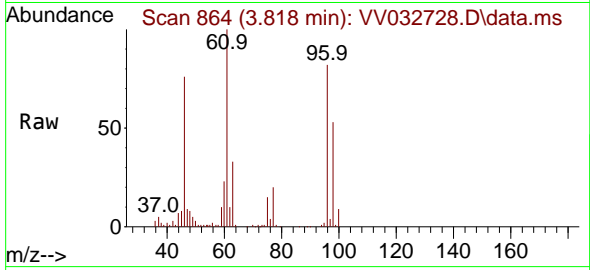
Ion	Ratio	Lower	Upper
43	100		
72	22.6	10.4	31.2





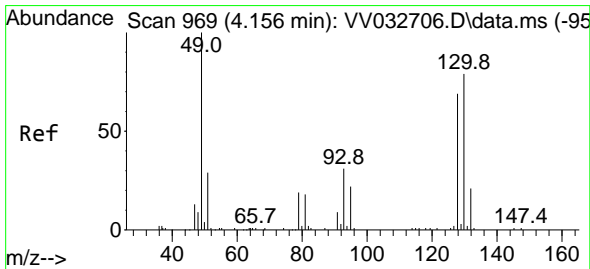
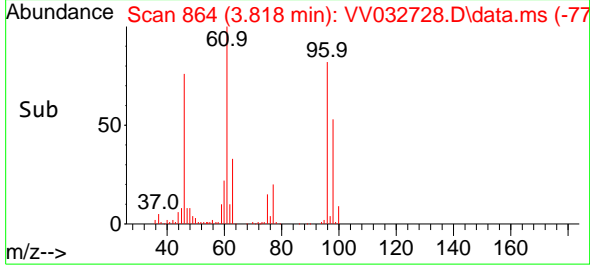
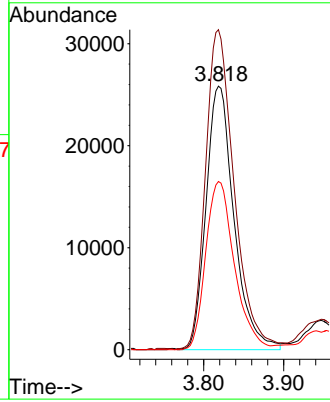
#22
 cis-1,2-Dichloroethene
 Concen: 5.099 ug/L
 RT: 3.818 min Scan# 80
 Delta R.T. 0.000 min
 Lab File: VV032728.D
 Acq: 28 Oct 2023 09:29

Instrument : MSVOA_V
 ClientSampleId : A49B9MS



Tgt Ion: 96 Resp: 62962

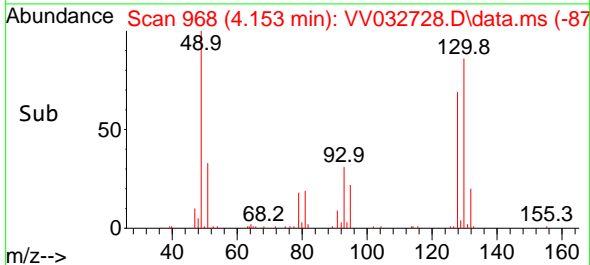
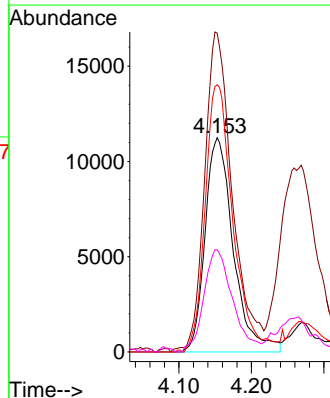
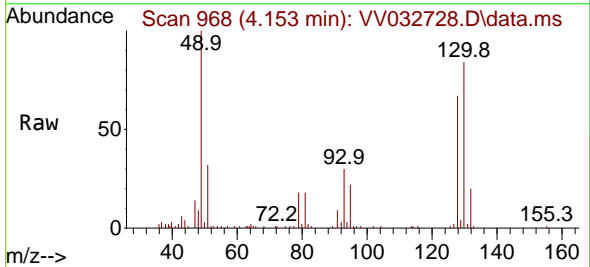
Ion	Ratio	Lower	Upper
96	100		
61	121.5	87.7	162.9
98	63.8	45.0	83.6

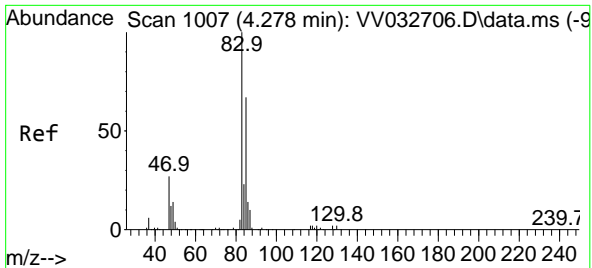


#23
 Bromochloromethane
 Concen: 5.295 ug/L
 RT: 4.153 min Scan# 968
 Delta R.T. -0.003 min
 Lab File: VV032728.D
 Acq: 28 Oct 2023 09:29

Tgt Ion: 128 Resp: 30413

Ion	Ratio	Lower	Upper
128	100		
49	148.8	110.4	205.0
130	124.7	86.8	161.2
51	47.7	37.6	56.4

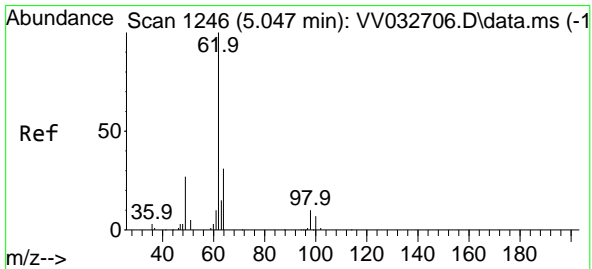
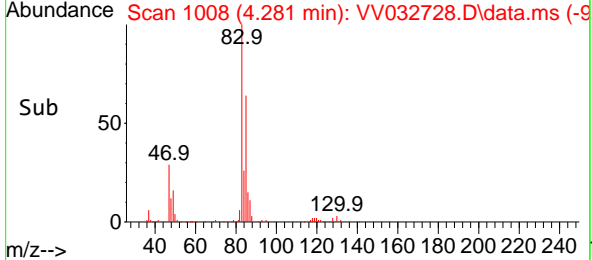
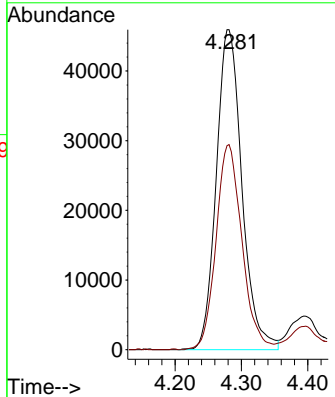
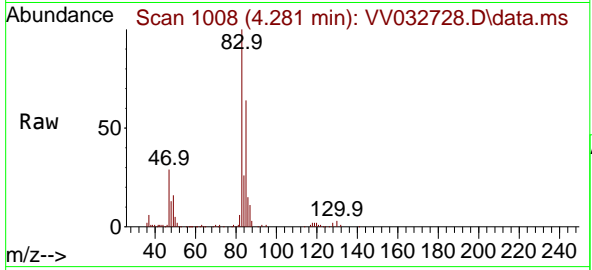




#25
 Chloroform
 Concen: 5.259 ug/L
 RT: 4.281 min Scan# 10
 Delta R.T. 0.003 min
 Lab File: VV032728.D
 Acq: 28 Oct 2023 09:29

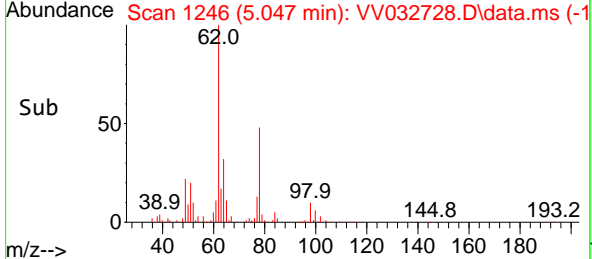
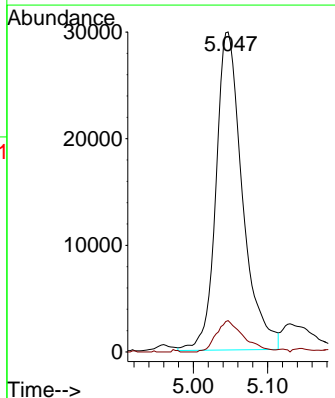
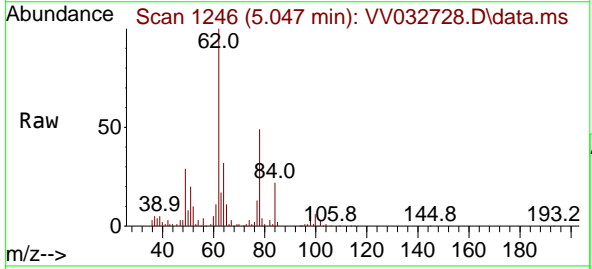
Instrument : MSVOA_V
 ClientSampleId : A49B9MS

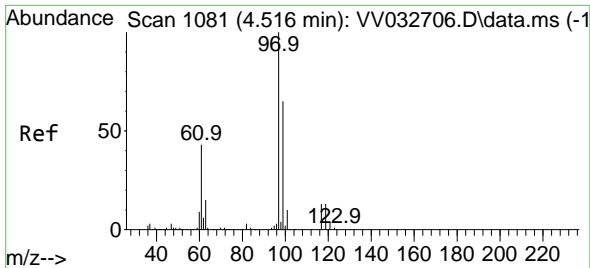
Tgt Ion: 83 Resp: 123467
 Ion Ratio Lower Upper
 83 100
 85 64.1 45.7 84.9



#27
 1,2-Dichloroethane
 Concen: 5.069 ug/L
 RT: 5.047 min Scan# 1246
 Delta R.T. 0.000 min
 Lab File: VV032728.D
 Acq: 28 Oct 2023 09:29

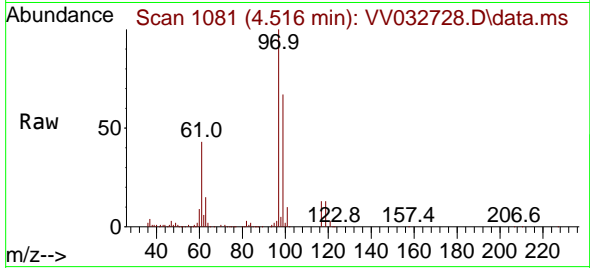
Tgt Ion: 62 Resp: 73967
 Ion Ratio Lower Upper
 62 100
 98 9.8 7.0 10.4



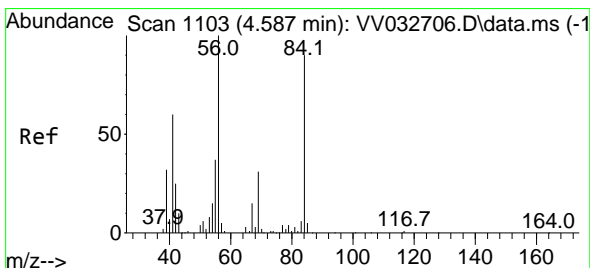
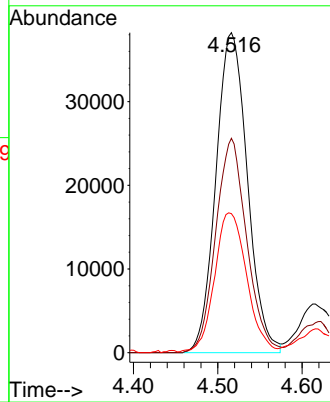
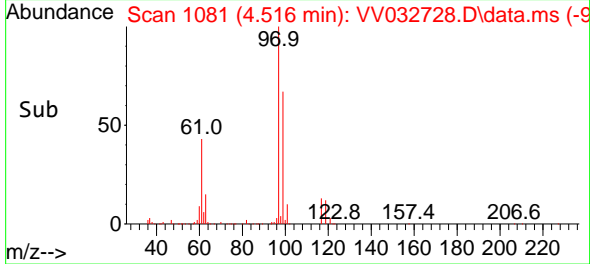


#29
 1,1,1-Trichloroethane
 Concen: 4.758 ug/L
 RT: 4.516 min Scan# 1081
 Delta R.T. 0.000 min
 Lab File: VV032728.D
 Acq: 28 Oct 2023 09:29

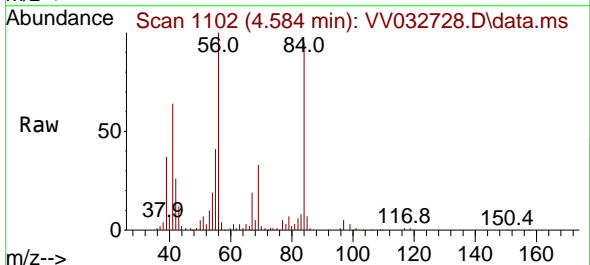
Instrument : MSVOA_V
 ClientSampleId : A49B9MS



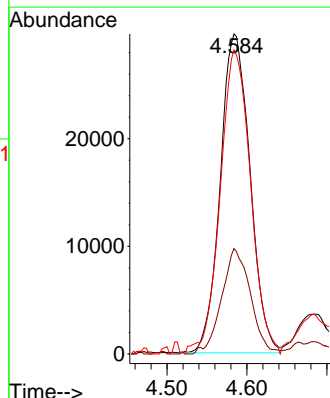
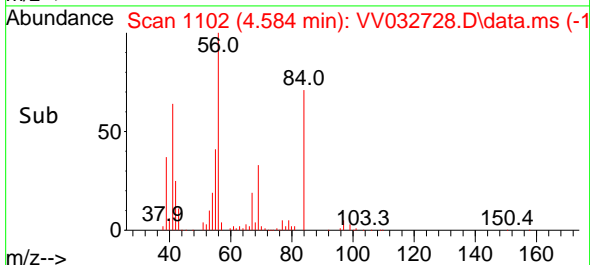
Tgt Ion: 97 Resp: 99277
 Ion Ratio Lower Upper
 97 100
 99 66.0 51.4 77.0
 61 44.1 36.1 54.1

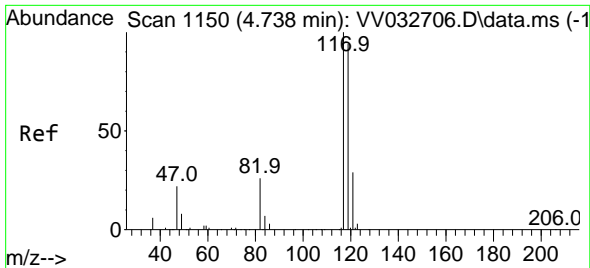


#30
 Cyclohexane
 Concen: 4.357 ug/L
 RT: 4.584 min Scan# 1102
 Delta R.T. -0.003 min
 Lab File: VV032728.D
 Acq: 28 Oct 2023 09:29



Tgt Ion: 56 Resp: 76625
 Ion Ratio Lower Upper
 56 100
 69 32.0 25.0 37.6
 84 96.9 72.9 109.3

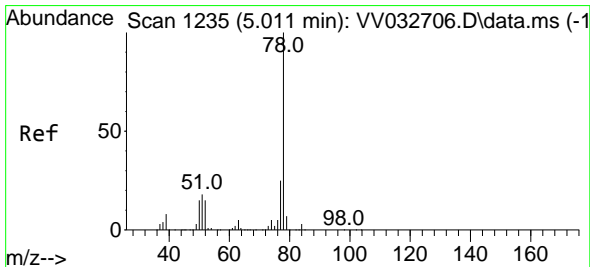
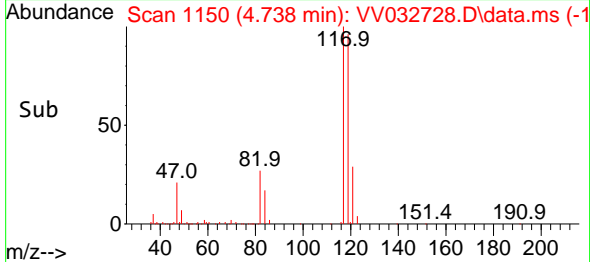
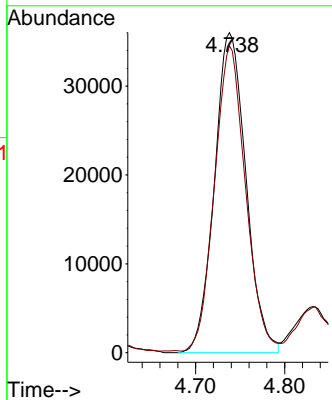
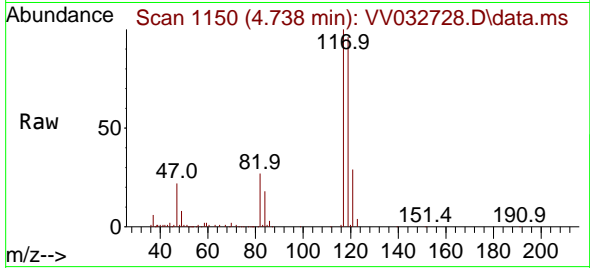




#31
 Carbon tetrachloride
 Concen: 4.878 ug/L
 RT: 4.738 min Scan# 1150
 Delta R.T. 0.000 min
 Lab File: VV032728.D
 Acq: 28 Oct 2023 09:29

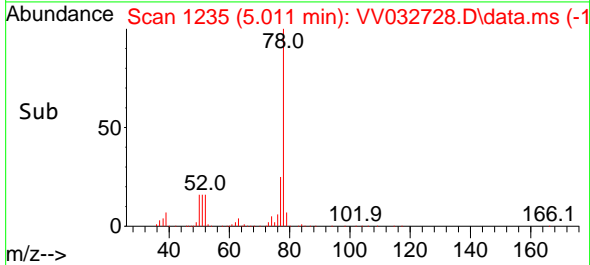
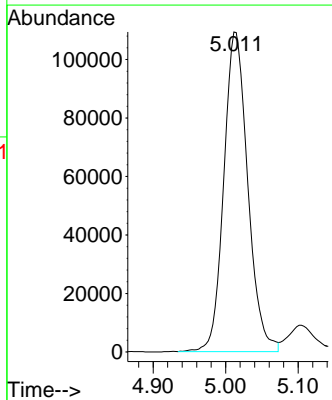
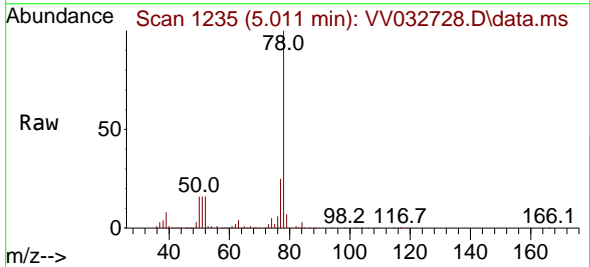
Instrument : MSVOA_V
 ClientSampleId : A49B9MS

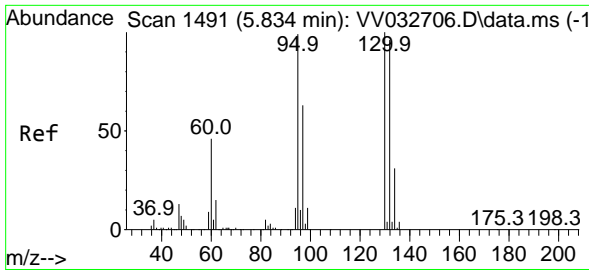
Tgt Ion:117 Resp: 88545
 Ion Ratio Lower Upper
 117 100
 119 93.9 77.8 116.6



#33
 Benzene
 Concen: 4.928 ug/L
 RT: 5.011 min Scan# 1235
 Delta R.T. 0.000 min
 Lab File: VV032728.D
 Acq: 28 Oct 2023 09:29

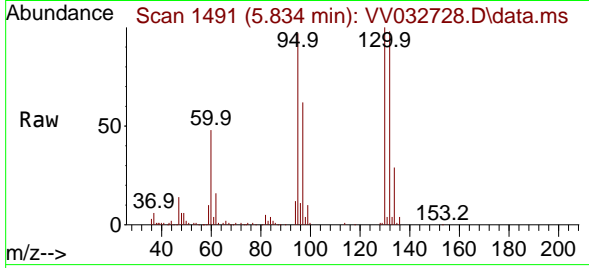
Tgt Ion: 78 Resp: 251263



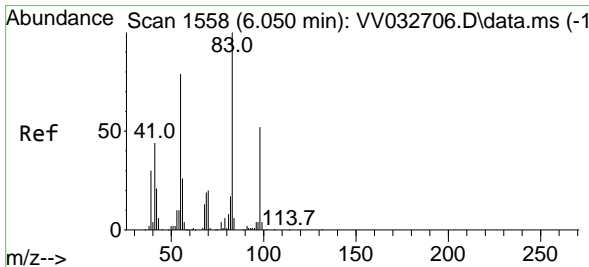
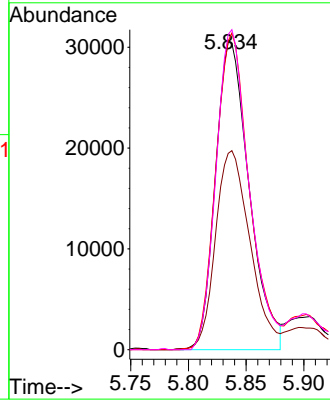
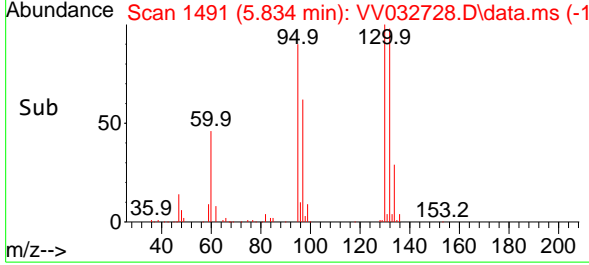


#34
 Trichloroethene
 Concen: 4.554 ug/L
 RT: 5.834 min Scan# 1491
 Delta R.T. 0.000 min
 Lab File: VV032728.D
 Acq: 28 Oct 2023 09:29

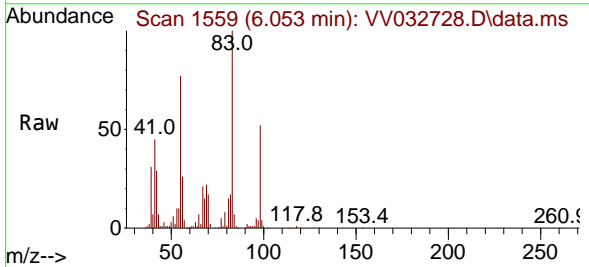
Instrument : MSVOA_V
 ClientSampleId : A49B9MS



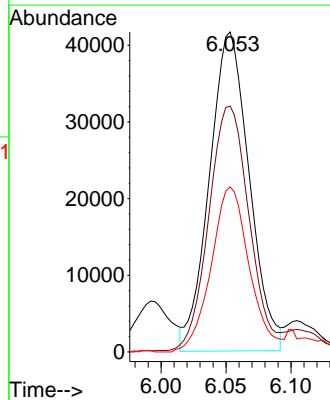
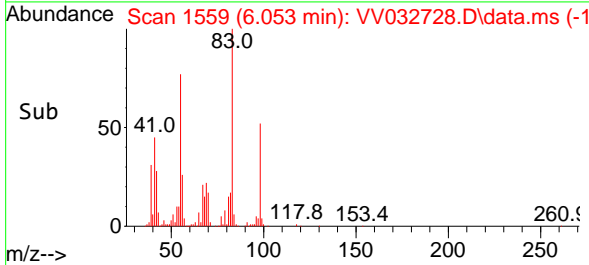
Tgt Ion: 95 Resp: 62030
 Ion Ratio Lower Upper
 95 100
 97 63.9 44.0 81.8
 132 100.4 66.9 124.3
 130 102.6 71.3 132.3

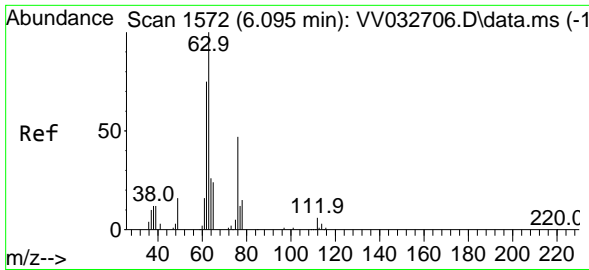


#35
 Methylcyclohexane
 Concen: 4.364 ug/L
 RT: 6.053 min Scan# 1559
 Delta R.T. 0.003 min
 Lab File: VV032728.D
 Acq: 28 Oct 2023 09:29



Tgt Ion: 83 Resp: 88835
 Ion Ratio Lower Upper
 83 100
 55 78.6 59.6 89.4
 98 49.7 39.1 58.7

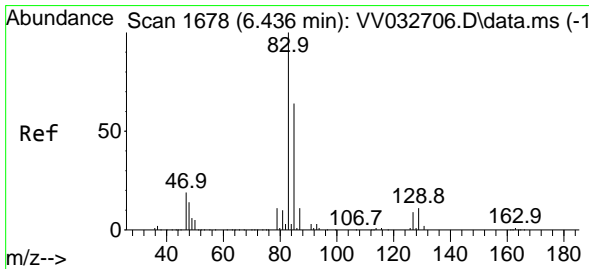
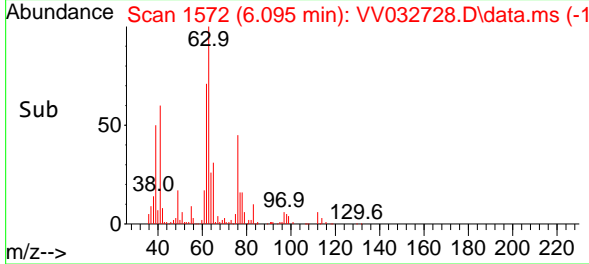
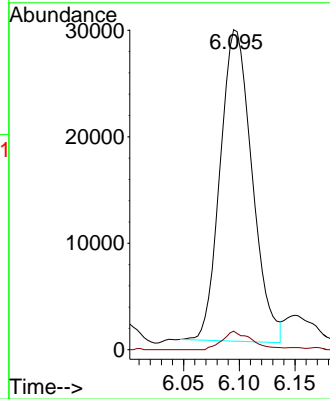
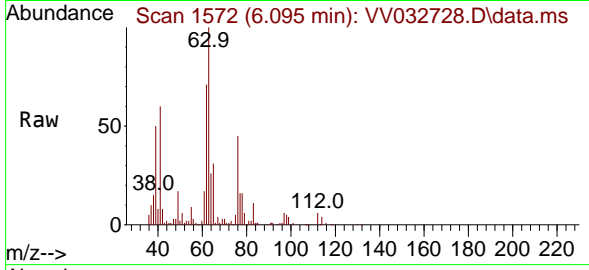




#37
 1,2-Dichloropropane
 Concen: 4.734 ug/L
 RT: 6.095 min Scan# 1572
 Delta R.T. 0.000 min
 Lab File: VV032728.D
 Acq: 28 Oct 2023 09:29

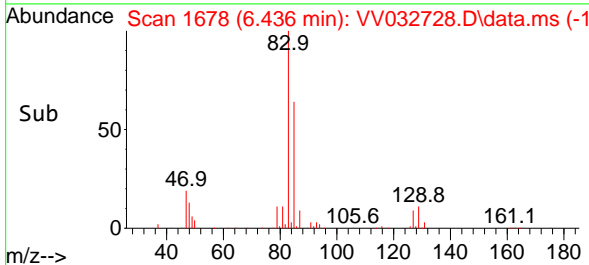
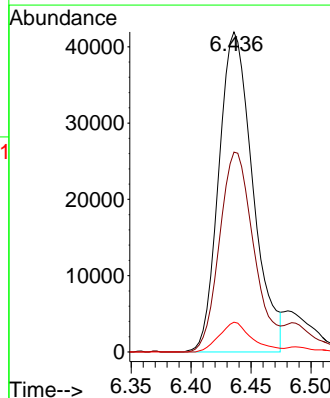
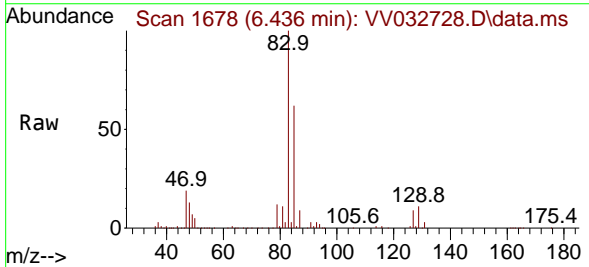
Instrument : MSVOA_V
 ClientSampleId : A49B9MS

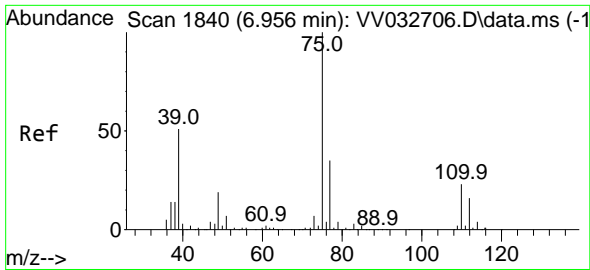
Tgt Ion: 63 Resp: 58247
 Ion Ratio Lower Upper
 63 100
 112 5.5 4.6 7.0



#38
 Bromodichloromethane
 Concen: 4.561 ug/L
 RT: 6.436 min Scan# 1678
 Delta R.T. 0.000 min
 Lab File: VV032728.D
 Acq: 28 Oct 2023 09:29

Tgt Ion: 83 Resp: 82909
 Ion Ratio Lower Upper
 83 100
 85 62.5 44.9 83.5
 127 9.3 7.0 10.6

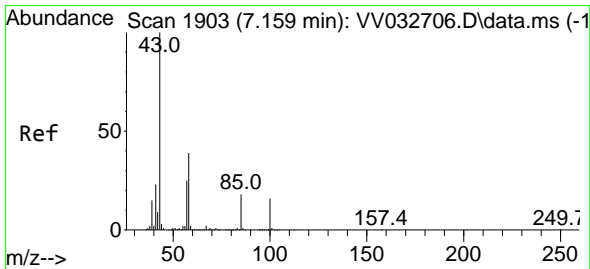
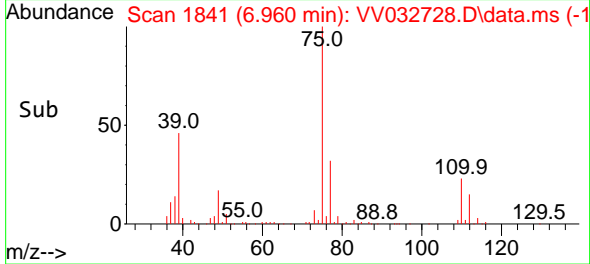
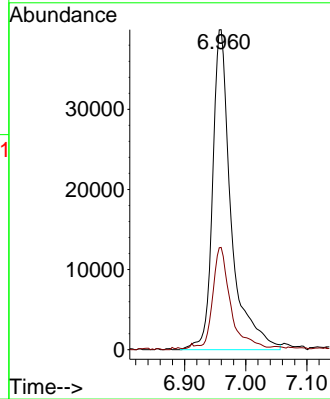
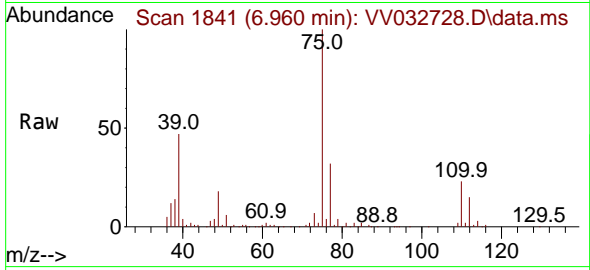




#39
 cis-1,3-Dichloropropene
 Concen: 4.507 ug/L
 RT: 6.960 min Scan# 1840
 Delta R.T. 0.003 min
 Lab File: VV032728.D
 Acq: 28 Oct 2023 09:29

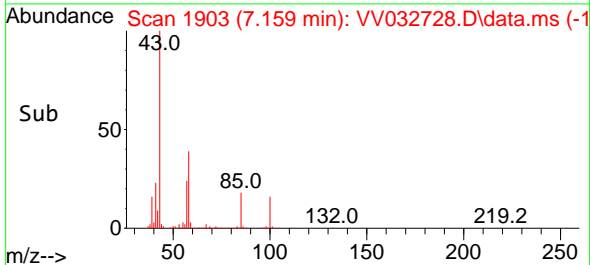
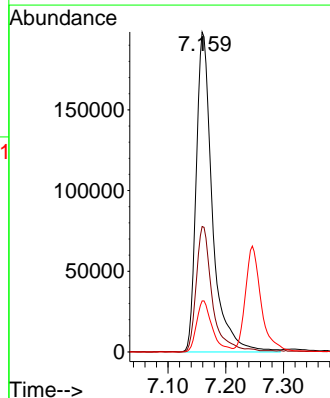
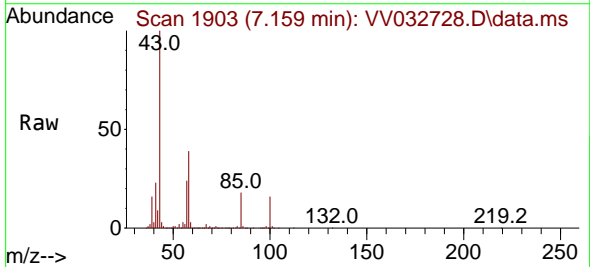
Instrument : MSVOA_V
 ClientSampleId : A49B9MS

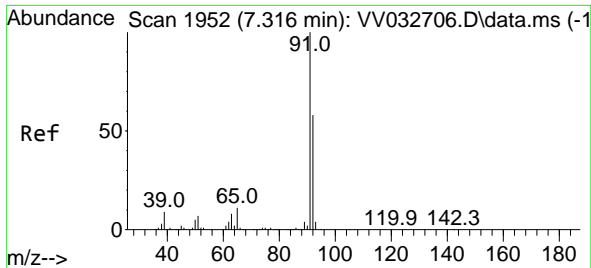
Tgt Ion: 75 Resp: 84432
 Ion Ratio Lower Upper
 75 100
 77 32.0 23.2 43.2



#40
 4-Methyl-2-pentanone
 Concen: 48.654 ug/L
 RT: 7.159 min Scan# 1903
 Delta R.T. 0.000 min
 Lab File: VV032728.D
 Acq: 28 Oct 2023 09:29

Tgt Ion: 43 Resp: 386262
 Ion Ratio Lower Upper
 43 100
 58 39.1 31.3 46.9
 100 15.6 12.2 18.4

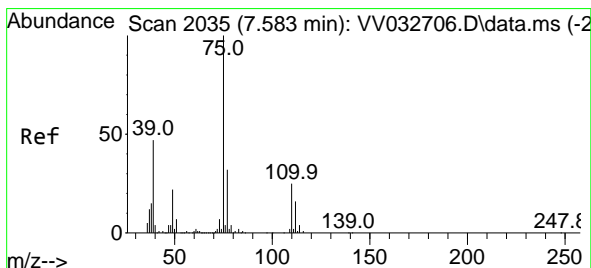
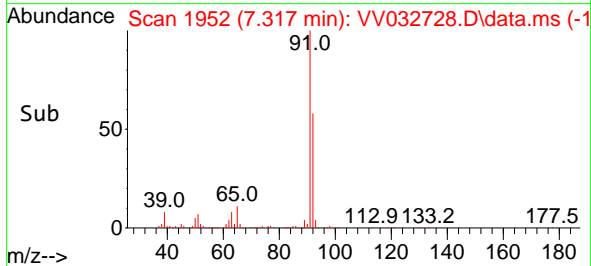
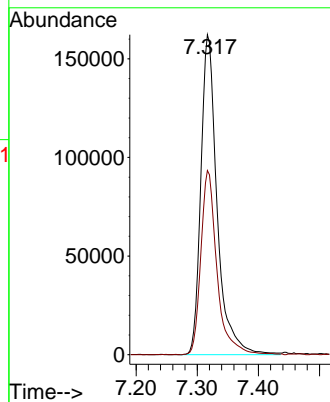
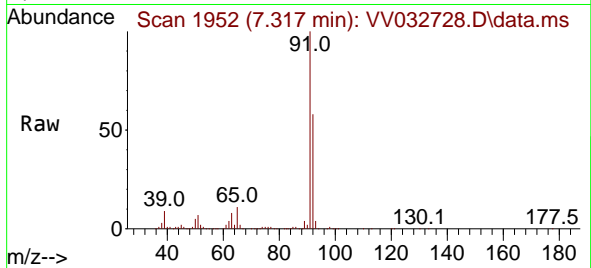




#42
 Toluene
 Concen: 5.061 ug/L
 RT: 7.317 min Scan# 1952
 Delta R.T. 0.000 min
 Lab File: VV032728.D
 Acq: 28 Oct 2023 09:29

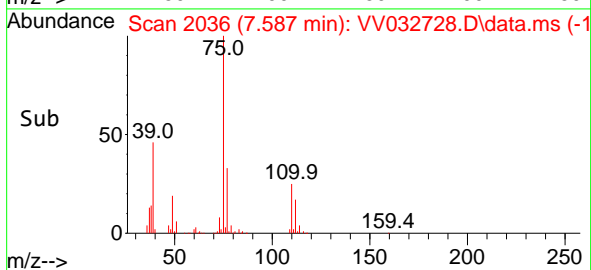
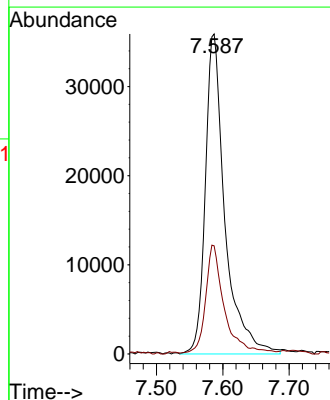
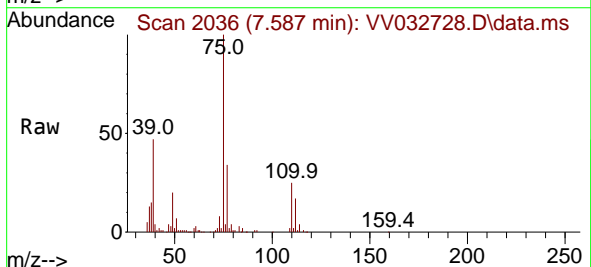
Instrument : MSVOA_V
 ClientSampleId : A49B9MS

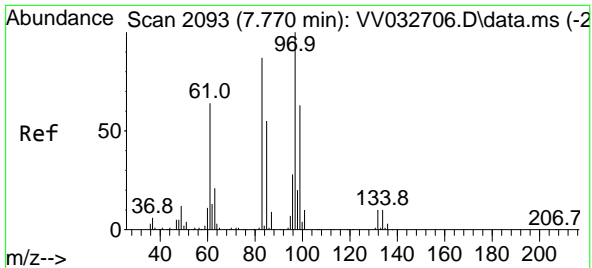
Tgt Ion: 91 Resp: 299837
 Ion Ratio Lower Upper
 91 100
 92 57.5 39.9 74.1



#44
 trans-1,3-Dichloropropene
 Concen: 4.560 ug/L
 RT: 7.587 min Scan# 2036
 Delta R.T. 0.003 min
 Lab File: VV032728.D
 Acq: 28 Oct 2023 09:29

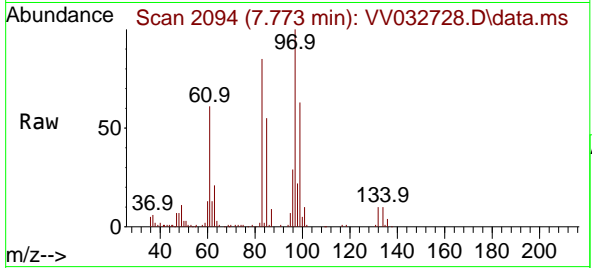
Tgt Ion: 75 Resp: 73502
 Ion Ratio Lower Upper
 75 100
 77 33.8 23.4 43.4





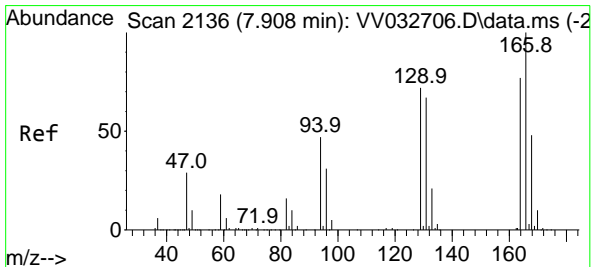
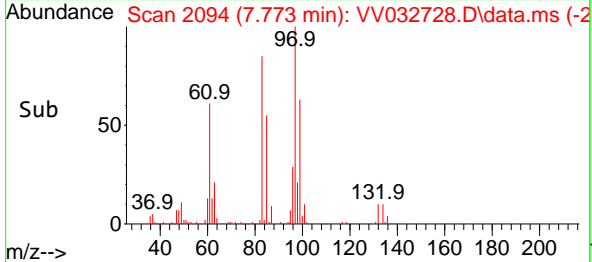
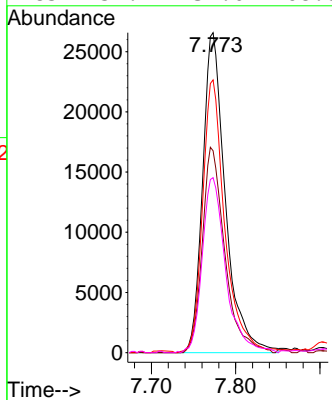
#45
 1,1,2-Trichloroethane
 Concen: 4.814 ug/L
 RT: 7.773 min Scan# 2094
 Delta R.T. 0.003 min
 Lab File: VV032728.D
 Acq: 28 Oct 2023 09:29

Instrument : MSVOA_V
 ClientSampleId : A49B9MS

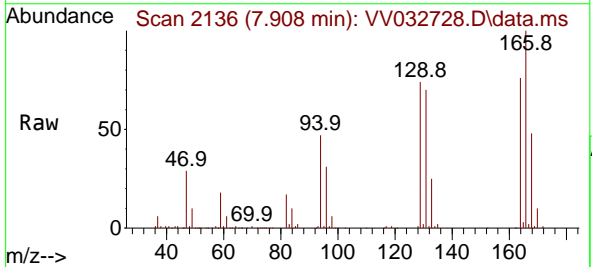


Tgt Ion: 97 Resp: 50020

Ion	Ratio	Lower	Upper
97	100		
99	63.1	44.0	81.8
83	85.2	59.9	111.3
85	54.7	37.0	68.8

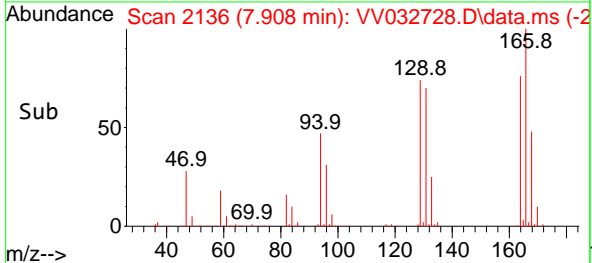
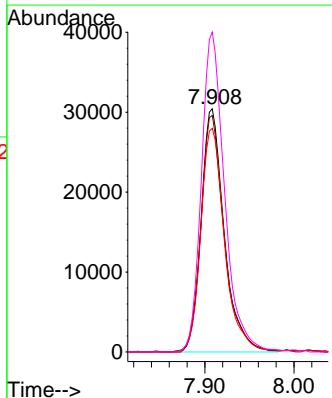


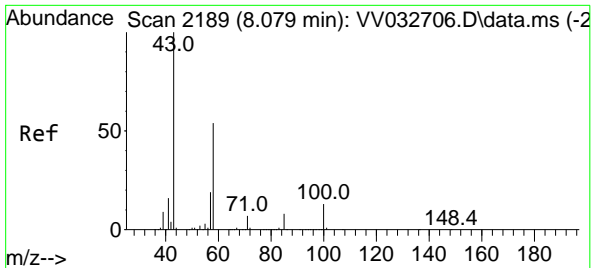
#47
 Tetrachloroethene
 Concen: 4.559 ug/L
 RT: 7.908 min Scan# 2136
 Delta R.T. 0.000 min
 Lab File: VV032728.D
 Acq: 28 Oct 2023 09:29



Tgt Ion: 164 Resp: 54878

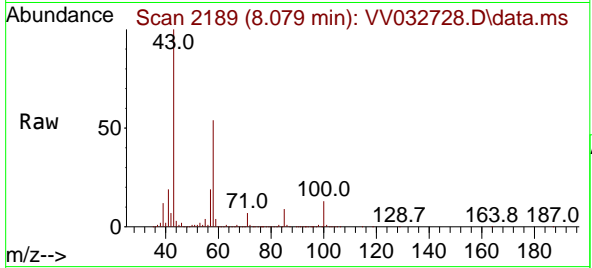
Ion	Ratio	Lower	Upper
164	100		
129	97.2	65.3	121.3
131	92.0	66.6	123.8
166	131.6	91.6	170.2





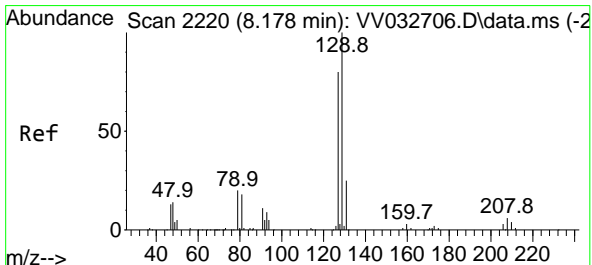
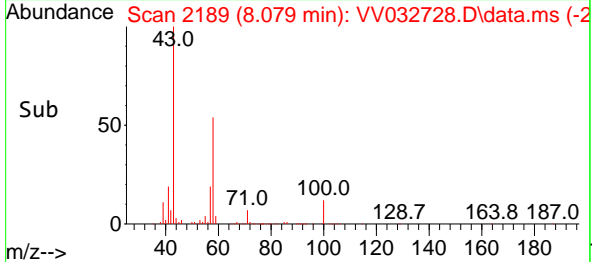
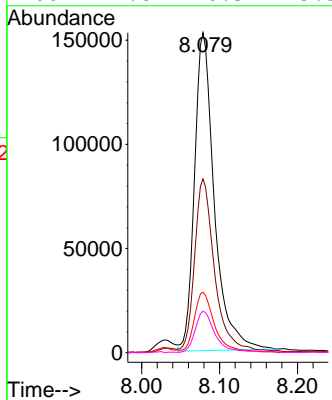
#48
 2-Hexanone
 Concen: 46.559 ug/L
 RT: 8.079 min Scan# 2189
 Delta R.T. 0.000 min
 Lab File: VV032728.D
 Acq: 28 Oct 2023 09:29

Instrument :
 MSVOA_V
 ClientSampleId :
 A49B9MS

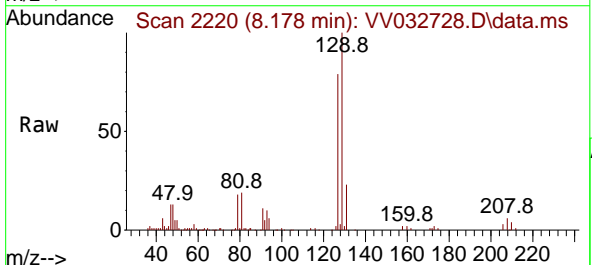


Tgt Ion: 43 Resp: 270348

Ion	Ratio	Lower	Upper
43	100		
58	54.2	43.8	65.6
57	19.9	15.1	22.7
100	12.8	10.3	15.5

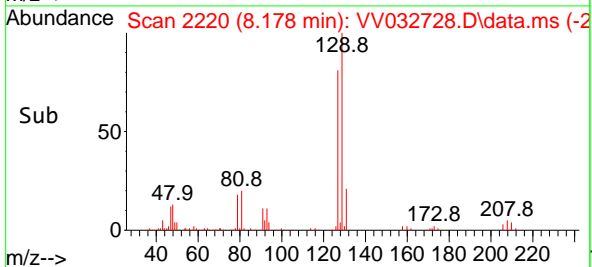
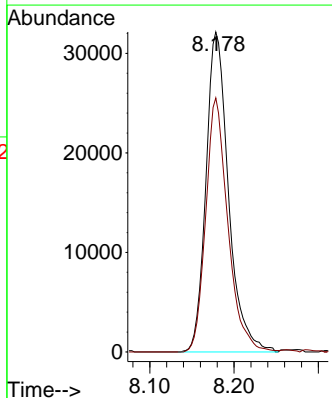


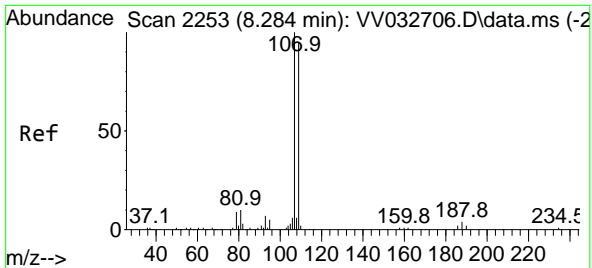
#49
 Dibromochloromethane
 Concen: 4.859 ug/L
 RT: 8.178 min Scan# 2220
 Delta R.T. 0.000 min
 Lab File: VV032728.D
 Acq: 28 Oct 2023 09:29



Tgt Ion: 129 Resp: 59893

Ion	Ratio	Lower	Upper
129	100		
127	79.4	54.0	100.4

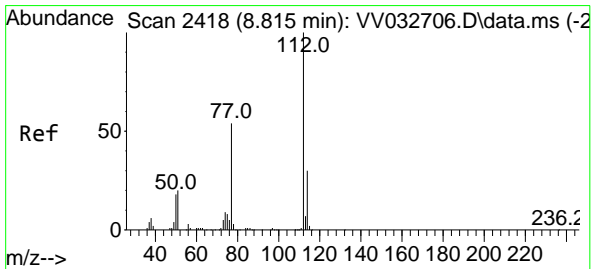
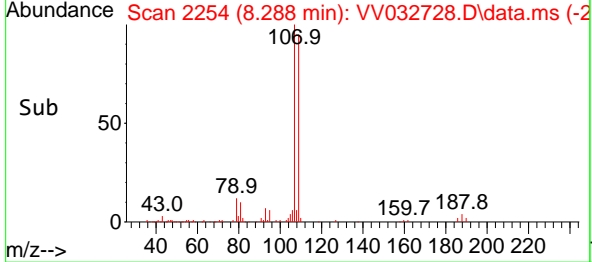
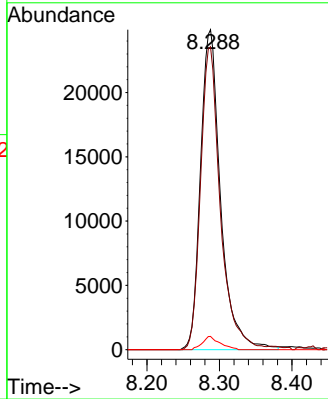
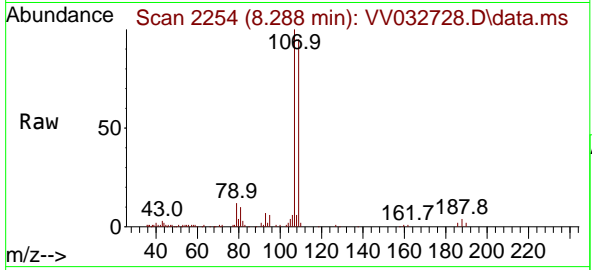




#50
 1,2-Dibromoethane
 Concen: 4.945 ug/L
 RT: 8.288 min Scan# 21
 Delta R.T. 0.003 min
 Lab File: VV032728.D
 Acq: 28 Oct 2023 09:29

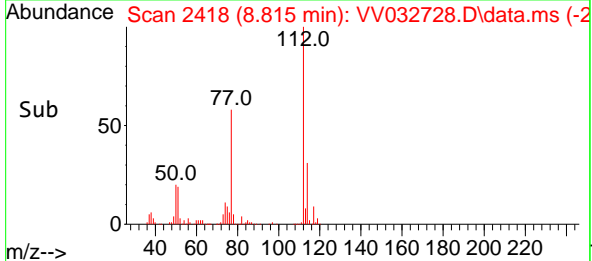
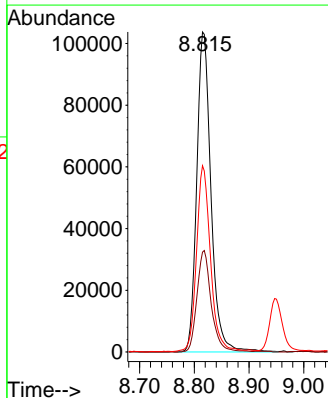
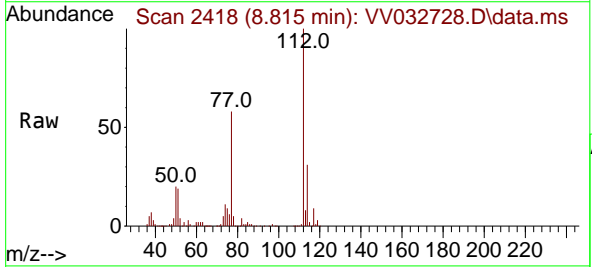
Instrument : MSVOA_V
 ClientSampleId : A49B9MS

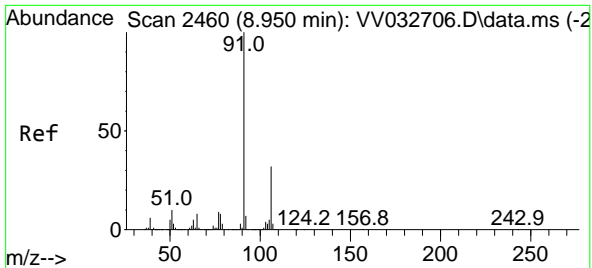
Tgt Ion	Resp	Lower	Upper
107	47960		
107	100		
109	94.7	66.4	123.4
188	4.2	2.9	4.3



#51
 Chlorobenzene
 Concen: 4.790 ug/L
 RT: 8.815 min Scan# 2418
 Delta R.T. 0.000 min
 Lab File: VV032728.D
 Acq: 28 Oct 2023 09:29

Tgt Ion	Resp	Lower	Upper
112	187463		
112	100		
114	31.2	22.7	42.3
77	58.2	45.7	68.5

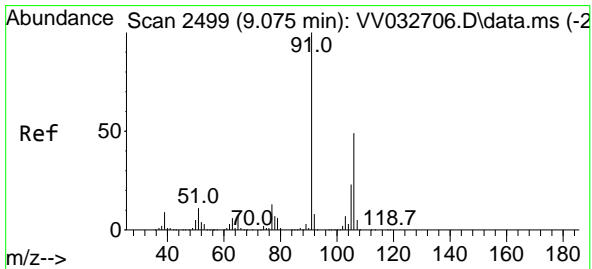
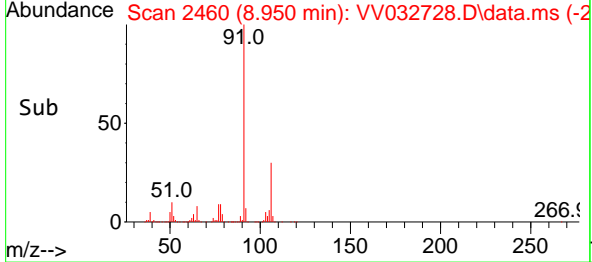
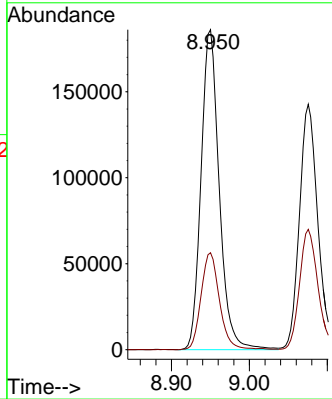
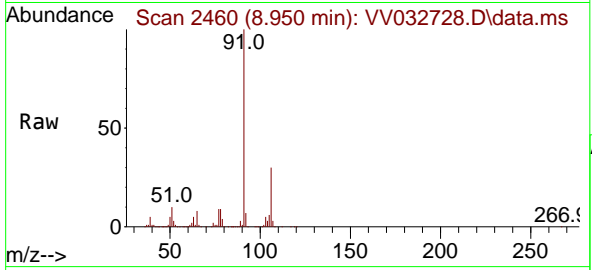




#52
 Ethylbenzene
 Concen: 4.844 ug/L
 RT: 8.950 min Scan# 2460
 Delta R.T. 0.000 min
 Lab File: VV032728.D
 Acq: 28 Oct 2023 09:29

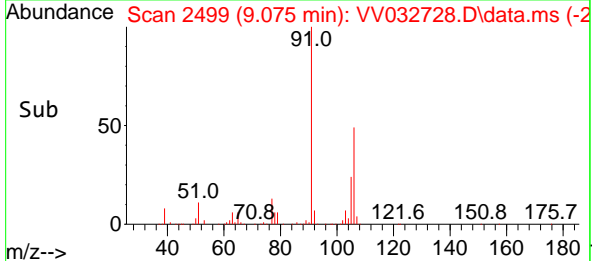
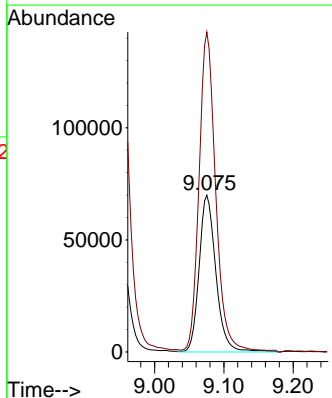
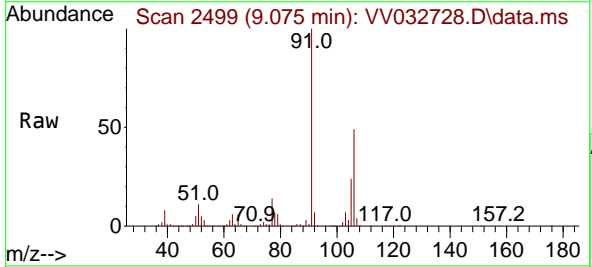
Instrument : MSVOA_V
 ClientSampleId : A49B9MS

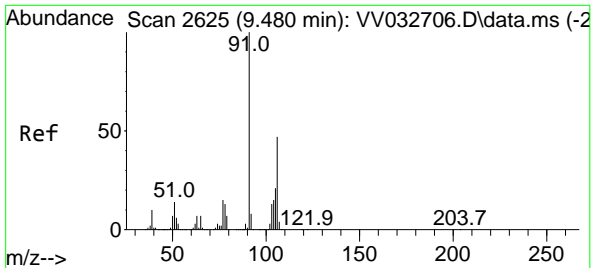
Tgt Ion: 91 Resp: 301703
 Ion Ratio Lower Upper
 91 100
 106 30.3 20.9 38.9



#53
 m,p-Xylene
 Concen: 4.999 ug/L
 RT: 9.075 min Scan# 2499
 Delta R.T. 0.000 min
 Lab File: VV032728.D
 Acq: 28 Oct 2023 09:29

Tgt Ion: 106 Resp: 117898
 Ion Ratio Lower Upper
 106 100
 91 204.0 139.3 258.7

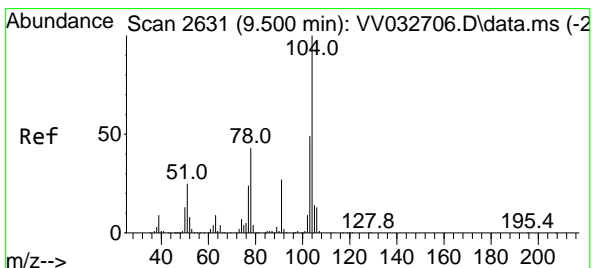
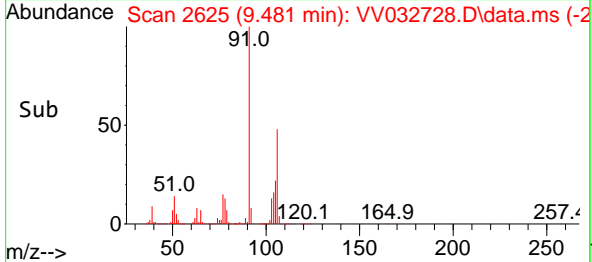
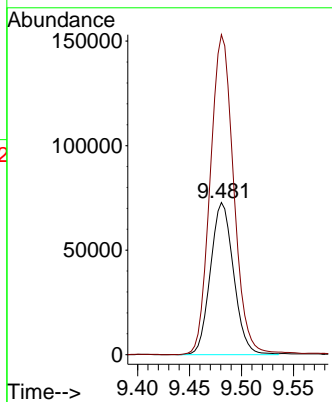
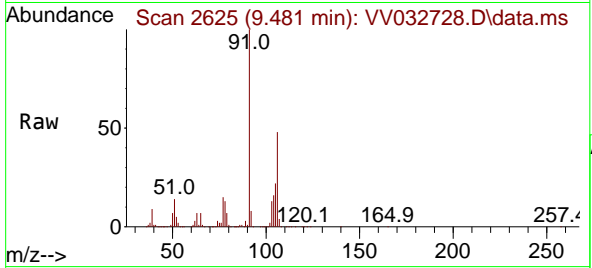




#54
 o-Xylene
 Concen: 4.933 ug/L
 RT: 9.481 min Scan# 2625
 Delta R.T. 0.000 min
 Lab File: VV032728.D
 Acq: 28 Oct 2023 09:29

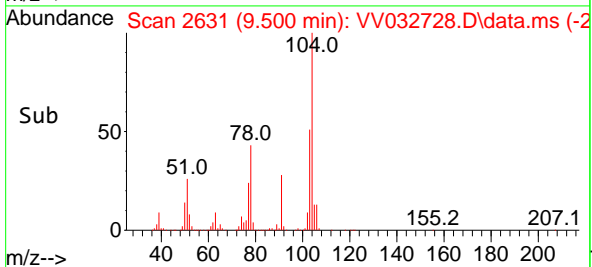
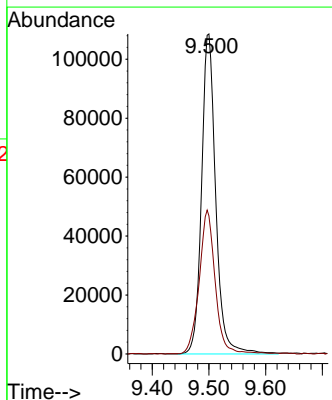
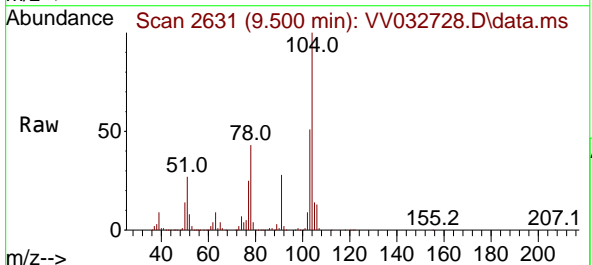
Instrument : MSVOA_V
 ClientSampleId : A49B9MS

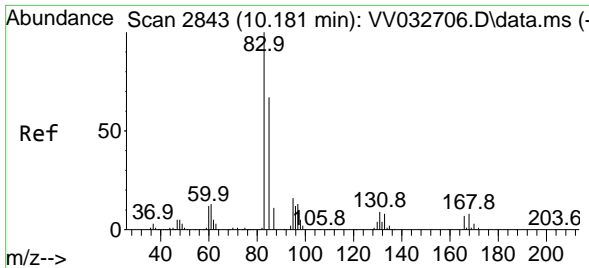
Tgt Ion:106 Resp: 112832
 Ion Ratio Lower Upper
 106 100
 91 210.2 147.4 273.8



#55
 Styrene
 Concen: 4.983 ug/L
 RT: 9.500 min Scan# 2631
 Delta R.T. 0.000 min
 Lab File: VV032728.D
 Acq: 28 Oct 2023 09:29

Tgt Ion:104 Resp: 188836
 Ion Ratio Lower Upper
 104 100
 78 43.2 30.5 56.7

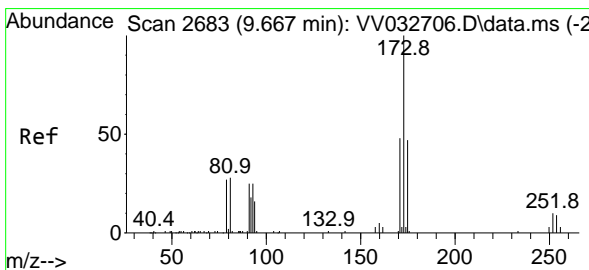
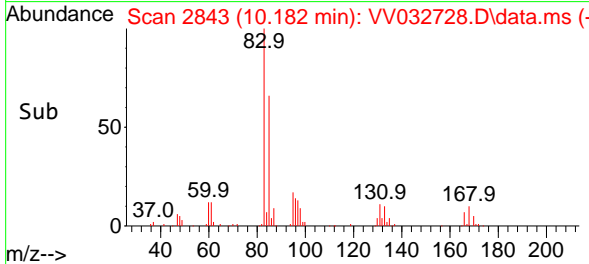
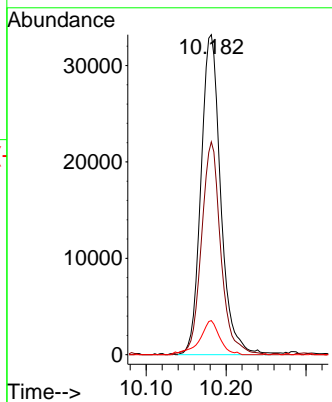
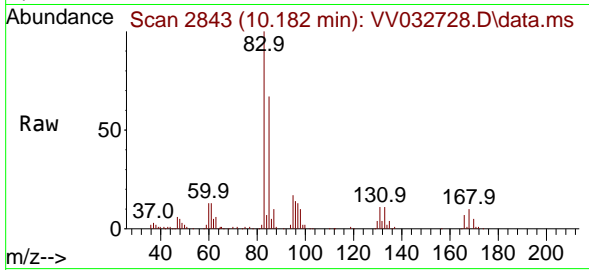




#57
 1,1,2,2-Tetrachloroethane
 Concen: 4.718 ug/L
 RT: 10.182 min Scan# 2843
 Delta R.T. 0.000 min
 Lab File: VV032728.D
 Acq: 28 Oct 2023 09:29

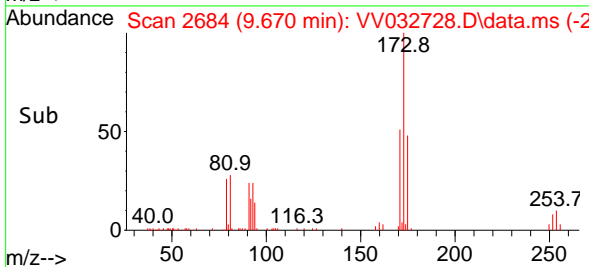
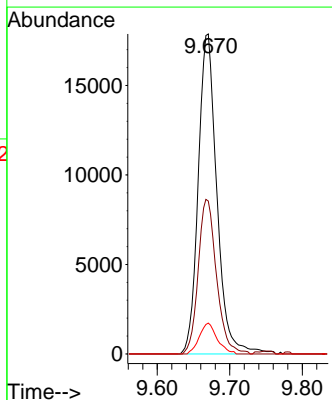
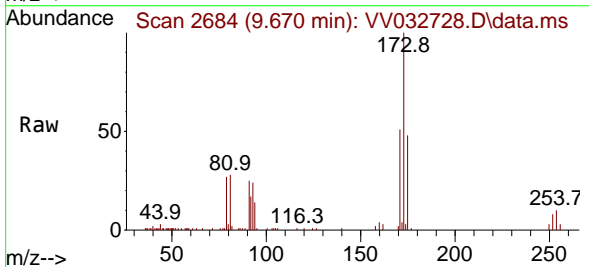
Instrument : MSVOA_V
 ClientSampleId : A49B9MS

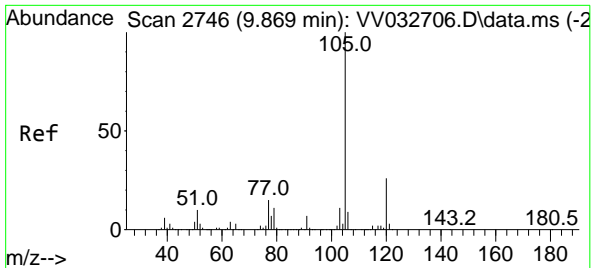
Tgt Ion	Resp	Lower	Upper
83	57186		
85	66.5	44.0	81.8
131	10.6	7.8	11.8



#59
 Bromoform
 Concen: 4.609 ug/L
 RT: 9.670 min Scan# 2684
 Delta R.T. 0.003 min
 Lab File: VV032728.D
 Acq: 28 Oct 2023 09:29

Tgt Ion	Resp	Lower	Upper
173	31929		
175	47.4	38.4	57.6
254	9.2	6.9	10.3



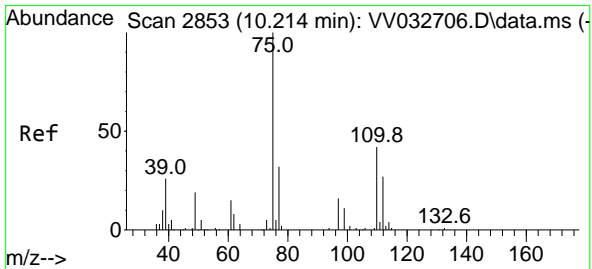
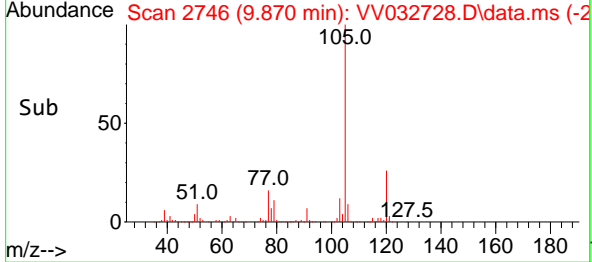
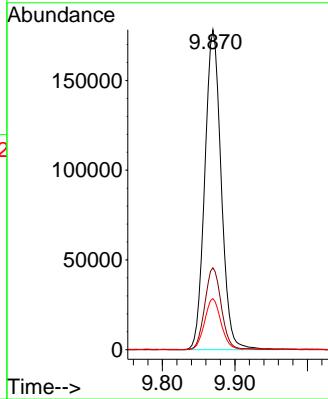
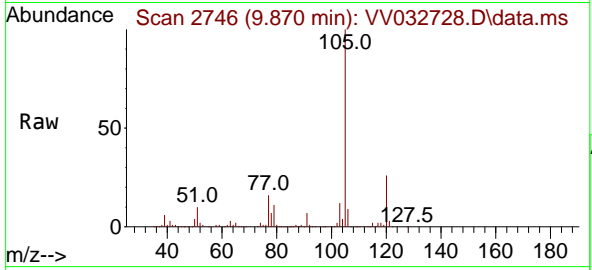


#60
 Isopropylbenzene
 Concen: 4.667 ug/L
 RT: 9.870 min Scan# 21
 Delta R.T. 0.000 min
 Lab File: VV032728.D
 Acq: 28 Oct 2023 09:29

Instrument :
 MSVOA_V
 ClientSampleId :
 A49B9MS

Tgt Ion:105 Resp: 279680

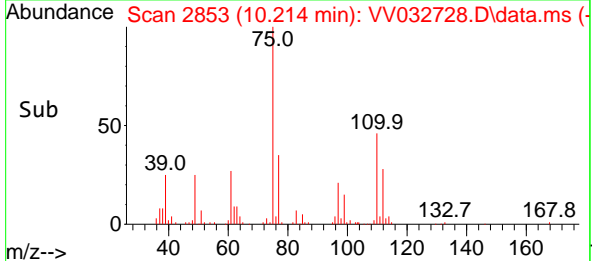
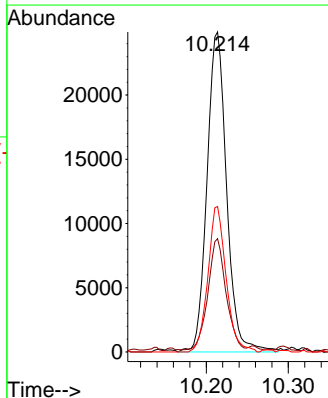
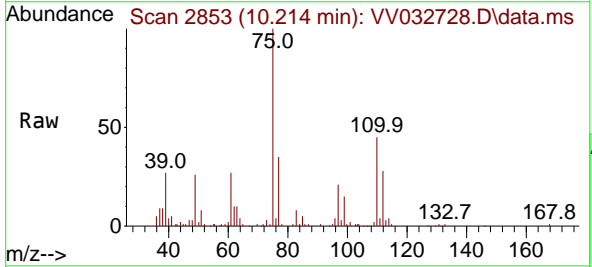
Ion	Ratio	Lower	Upper
105	100		
120	25.9	21.0	31.6
77	16.0	12.6	19.0

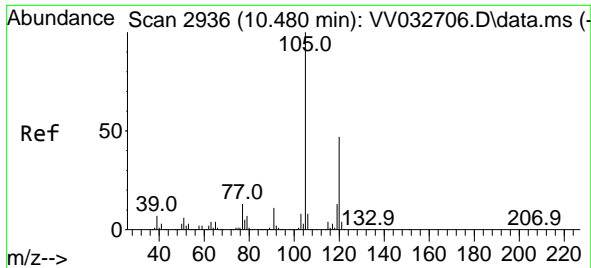


#61
 1,2,3-Trichloropropane
 Concen: 4.437 ug/L
 RT: 10.214 min Scan# 2853
 Delta R.T. 0.000 min
 Lab File: VV032728.D
 Acq: 28 Oct 2023 09:29

Tgt Ion: 75 Resp: 41429

Ion	Ratio	Lower	Upper
75	100		
77	31.8	24.5	36.7
110	42.2	32.3	48.5

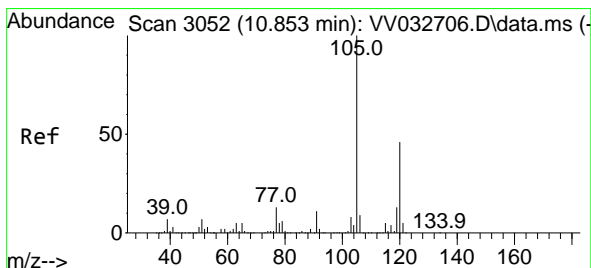
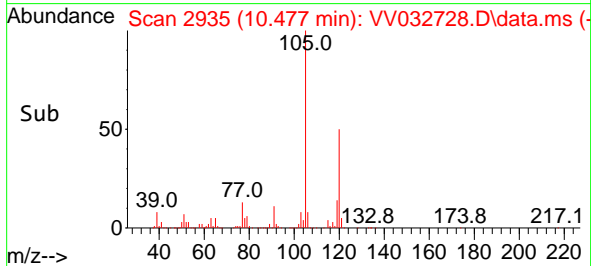
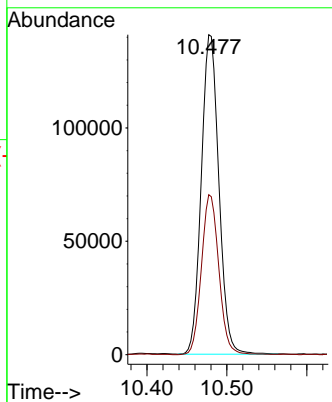
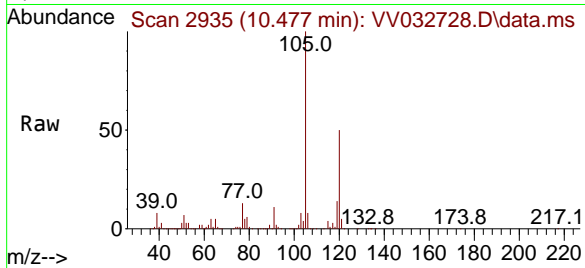




#62
 1,3,5-Trimethylbenzene
 Concen: 4.401 ug/L
 RT: 10.477 min Scan# 2935
 Delta R.T. -0.003 min
 Lab File: VV032728.D
 Acq: 28 Oct 2023 09:29

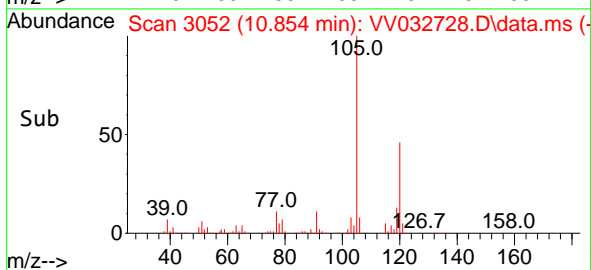
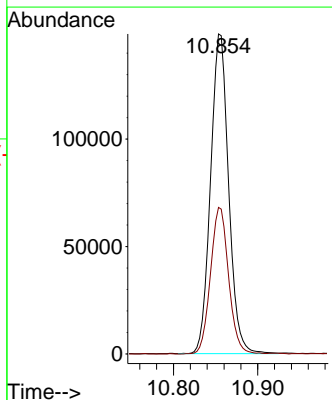
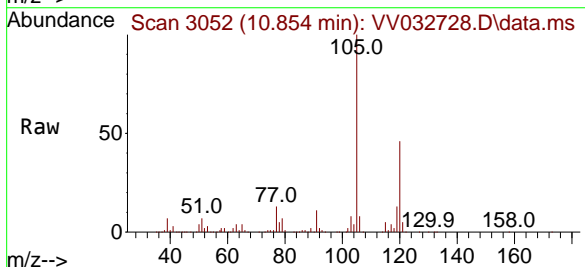
Instrument : MSVOA_V
 ClientSampleId : A49B9MS

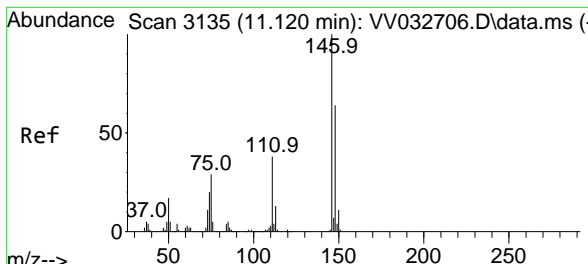
Tgt Ion:105 Resp: 215588
 Ion Ratio Lower Upper
 105 100
 120 49.8 39.4 59.2



#63
 1,2,4-Trimethylbenzene
 Concen: 4.573 ug/L
 RT: 10.854 min Scan# 3052
 Delta R.T. 0.000 min
 Lab File: VV032728.D
 Acq: 28 Oct 2023 09:29

Tgt Ion:105 Resp: 221357
 Ion Ratio Lower Upper
 105 100
 120 46.0 36.9 55.3



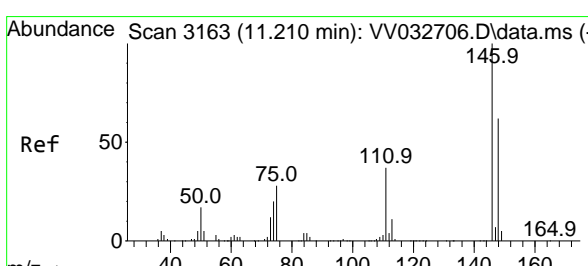
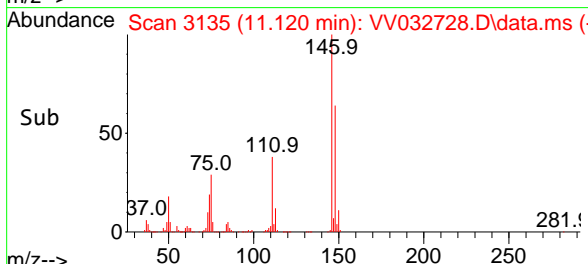
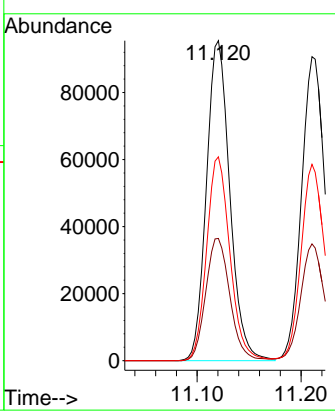
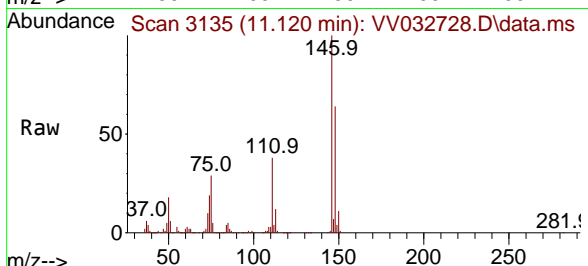


#64
 1,3-Dichlorobenzene
 Concen: 4.636 ug/L
 RT: 11.120 min Scan# 3135
 Delta R.T. 0.000 min
 Lab File: VV032728.D
 Acq: 28 Oct 2023 09:29

Instrument : MSVOA_V
 ClientSampleId : A49B9MS

Tgt Ion:146 Resp: 149062

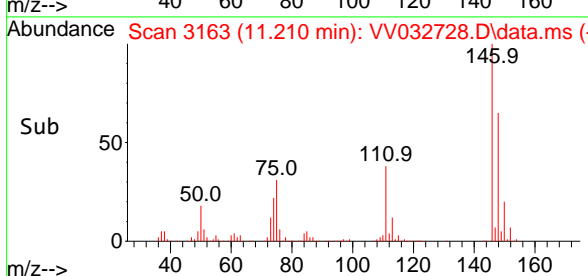
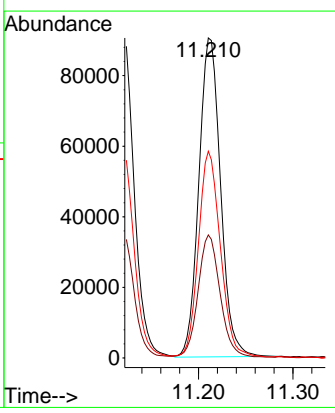
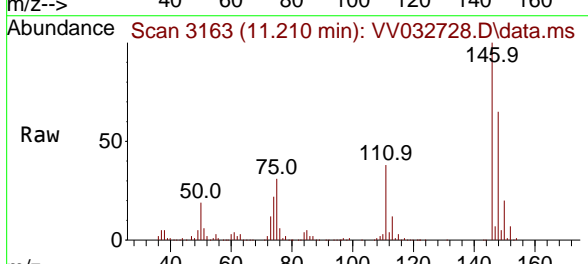
Ion	Ratio	Lower	Upper
146	100		
111	38.2	26.8	49.8
148	63.7	44.3	82.3

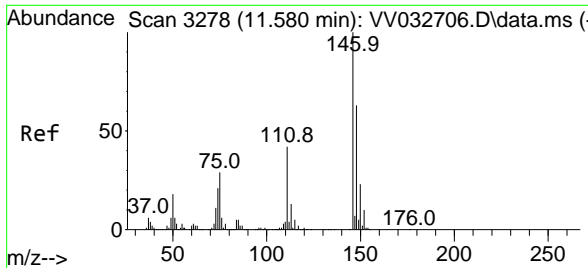


#65
 1,4-Dichlorobenzene
 Concen: 4.526 ug/L
 RT: 11.210 min Scan# 3163
 Delta R.T. 0.000 min
 Lab File: VV032728.D
 Acq: 28 Oct 2023 09:29

Tgt Ion:146 Resp: 144451

Ion	Ratio	Lower	Upper
146	100		
111	38.4	26.2	48.8
148	64.6	44.3	82.3



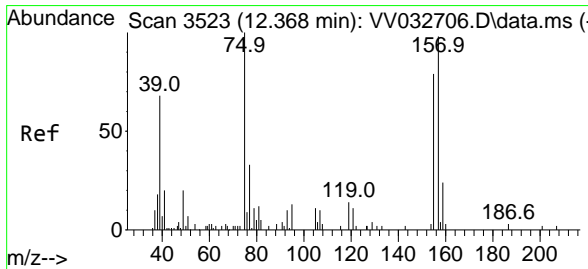
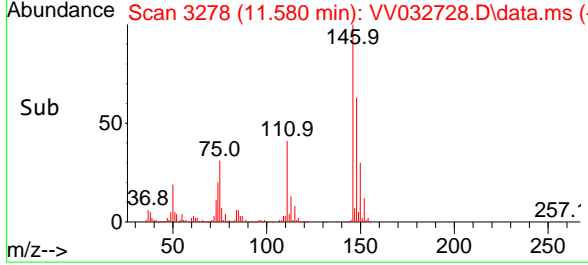
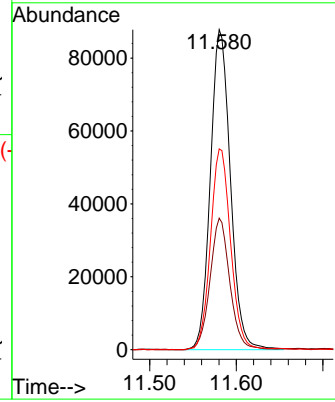
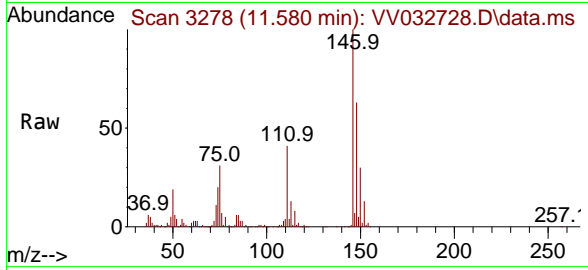


#67
 1,2-Dichlorobenzene
 Concen: 4.770 ug/L
 RT: 11.580 min Scan# 31
 Delta R.T. 0.000 min
 Lab File: VV032728.D
 Acq: 28 Oct 2023 09:29

Instrument :
 MSVOA_V
 ClientSampleId :
 A49B9MS

Tgt Ion:146 Resp: 141052

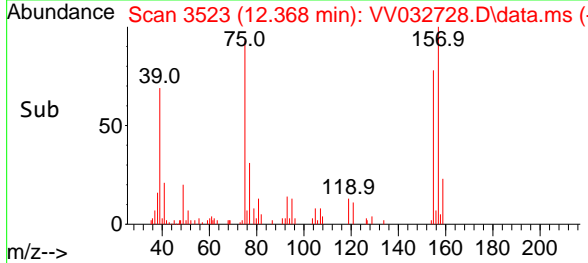
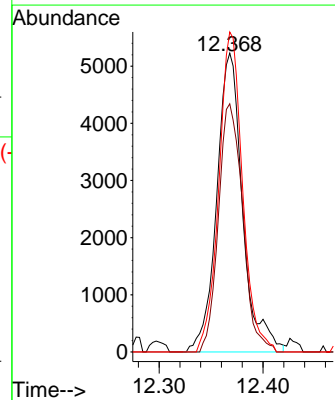
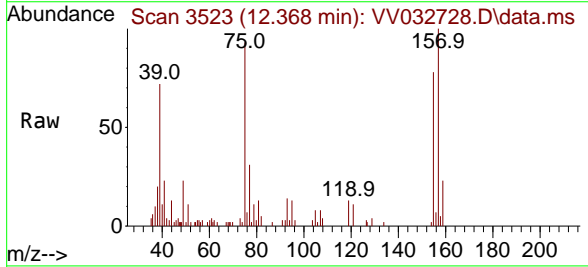
Ion	Ratio	Lower	Upper
146	100		
111	41.1	34.2	51.4
148	62.7	51.8	77.8

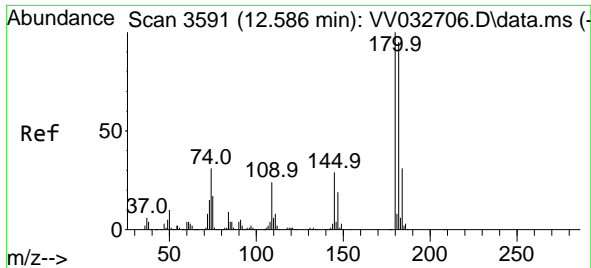


#68
 1,2-Dibromo-3-chloropropane
 Concen: 4.056 ug/L
 RT: 12.368 min Scan# 3523
 Delta R.T. 0.000 min
 Lab File: VV032728.D
 Acq: 28 Oct 2023 09:29

Tgt Ion: 75 Resp: 9051

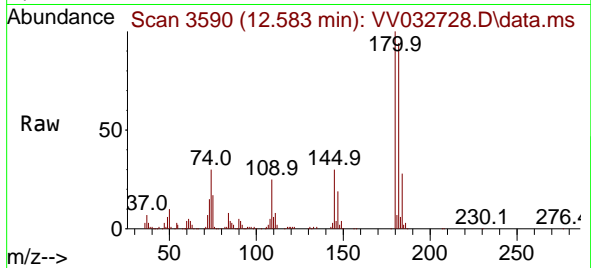
Ion	Ratio	Lower	Upper
75	100		
155	83.0	70.1	105.1
157	107.1	90.2	135.2



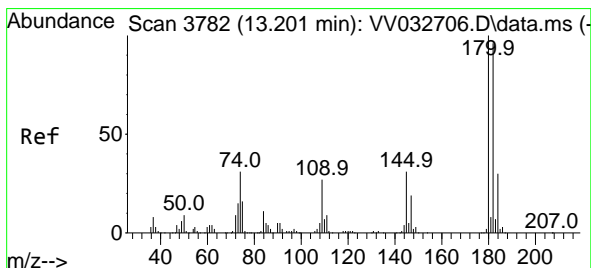
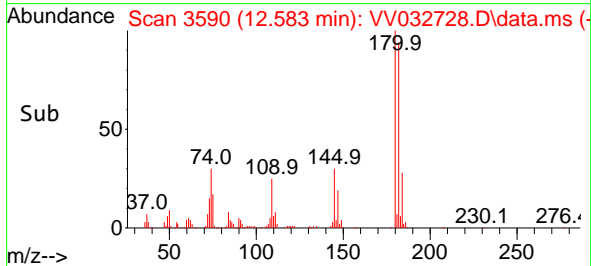
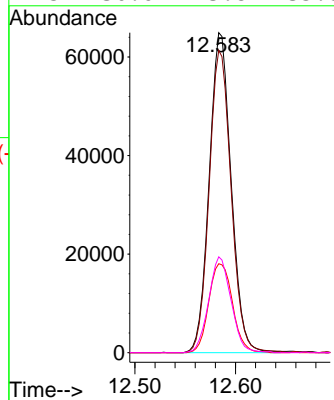


#69
 1,3,5-Trichlorobenzene
 Concen: 4.286 ug/L
 RT: 12.583 min Scan# 31
 Delta R.T. -0.003 min
 Lab File: VV032728.D
 Acq: 28 Oct 2023 09:29

Instrument : MSVOA_V
 ClientSampleId : A49B9MS

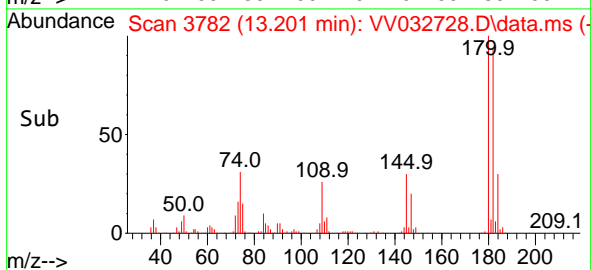
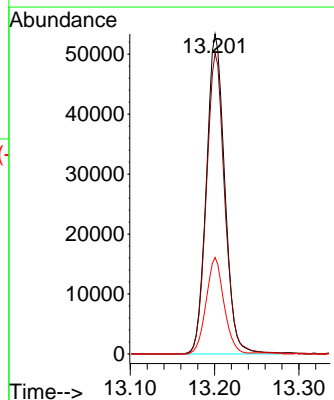
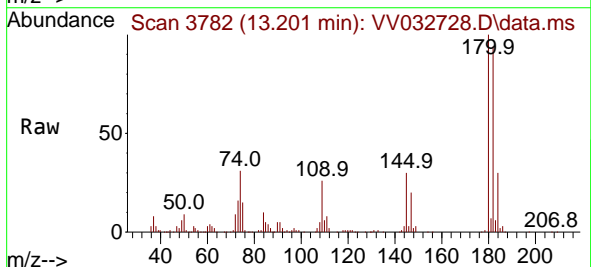


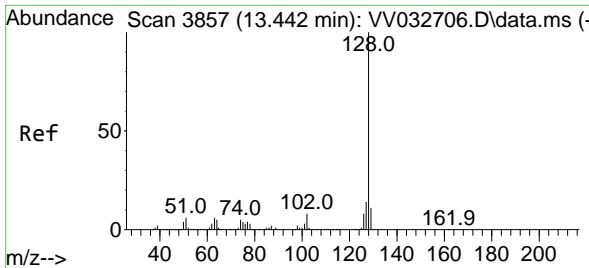
Tgt Ion:180 Resp: 98356
 Ion Ratio Lower Upper
 180 100
 182 94.8 76.6 115.0
 184 30.1 24.3 36.5
 145 30.6 23.8 35.8



#70
 1,2,4-trichlorobenzene
 Concen: 4.160 ug/L
 RT: 13.201 min Scan# 3782
 Delta R.T. 0.000 min
 Lab File: VV032728.D
 Acq: 28 Oct 2023 09:29

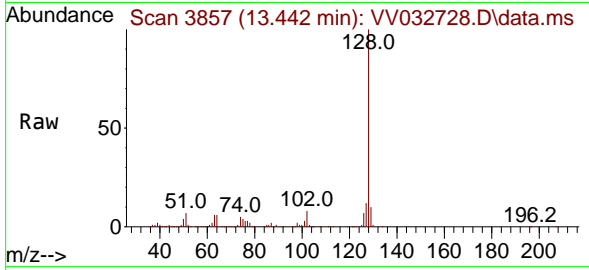
Tgt Ion:180 Resp: 81001
 Ion Ratio Lower Upper
 180 100
 182 94.2 75.7 113.5
 145 29.4 25.0 37.4





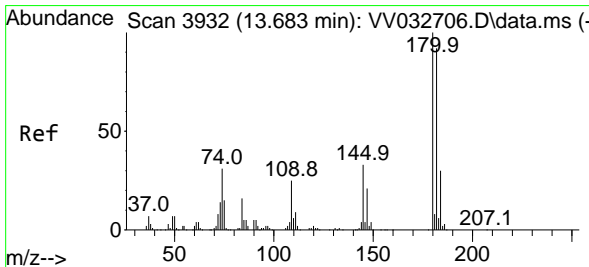
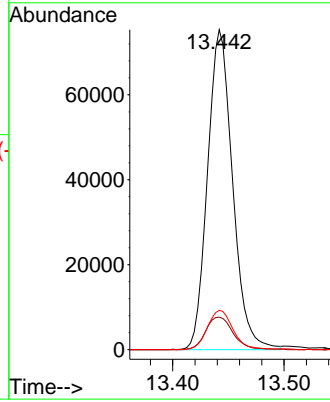
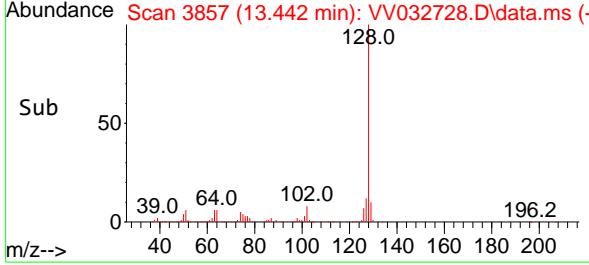
#71
 Naphthalene
 Concen: 3.816 ug/L
 RT: 13.442 min Scan# 3857
 Delta R.T. 0.000 min
 Lab File: VV032728.D
 Acq: 28 Oct 2023 09:29

Instrument : MSVOA_V
 ClientSampleId : A49B9MS

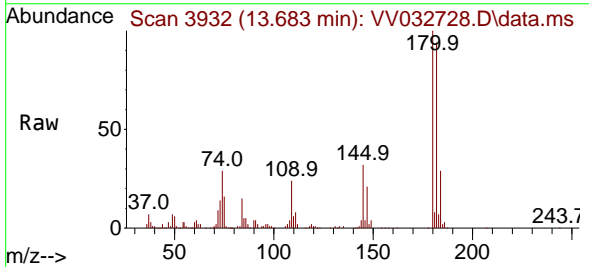


Tgt Ion:128 Resp: 117773

Ion	Ratio	Lower	Upper
128	100		
129	11.3	8.6	12.8
127	12.7	10.4	15.6



#72
 1,2,3-Trichlorobenzene
 Concen: 4.399 ug/L
 RT: 13.683 min Scan# 3932
 Delta R.T. 0.000 min
 Lab File: VV032728.D
 Acq: 28 Oct 2023 09:29



Tgt Ion:180 Resp: 75316

Ion	Ratio	Lower	Upper
180	100		
182	94.8	75.4	113.2
145	33.1	26.4	39.6

