

Data Path : Z:\voasrv\HPCHEM1\MSVOA_V\Data\VW102822\
 Data File : VV028769.D
 Acq On : 28 Oct 2022 20:36
 Operator : SY/MD
 Sample : VSTDCCC005EC
 Misc : 25.0mL/MSVOA_V/WATER
 ALS Vial : 26 Sample Multiplier: 1

Instrument :
 MSVOA_V
 ClientSampleId :
 VSTD005340

Quant Time: Oct 28 21:56:44 2022
 Quant Method : Z:\voasrv\HPCHEM1\MSVOA_V\Method\SFAMVTR102522WMA.M
 Quant Title : TRACE VOA SFAM1.0
 QLast Update : Fri Oct 28 21:50:06 2022
 Response via : Initial Calibration

Compound	R.T.	QIon	Response	Conc	Units	Dev(Min)
Internal Standards						
1) 1,4-Difluorobenzene	5.612	114	176709	5.000	ug/L	0.00
28) Chlorobenzene-d5	8.847	117	167194	5.000	ug/L	0.00
58) 1,4-Dichlorobenzene-d4	11.242	152	83659	5.000	ug/L	0.00
System Monitoring Compounds						
4) Vinyl Chloride-d3	1.304	65	76137	6.195	ug/L	0.00
Spiked Amount	5.000	Range 40 - 130	Recovery	=	124.000%	
7) Chloroethane-d5	1.564	69	60250	5.798	ug/L	0.00
Spiked Amount	5.000	Range 65 - 130	Recovery	=	116.000%	
11) 1,1-Dichloroethene-d2	2.104	63	141062	5.934	ug/L	0.00
Spiked Amount	5.000	Range 60 - 125	Recovery	=	118.600%	
20) 2-Butanone-d5	3.902	46	116456	41.557	ug/L	0.00
Spiked Amount	50.000	Range 40 - 130	Recovery	=	83.120%	
24) Chloroform-d	4.342	84	112223	5.259	ug/L	0.00
Spiked Amount	5.000	Range 70 - 125	Recovery	=	105.200%	
26) 1,2-Dichloroethane-d4	5.030	65	54257	5.011	ug/L	0.00
Spiked Amount	5.000	Range 70 - 130	Recovery	=	100.200%	
32) Benzene-d6	5.047	84	225555	5.044	ug/L	0.00
Spiked Amount	5.000	Range 70 - 125	Recovery	=	100.800%	
36) 1,2-Dichloropropane-d6	6.066	67	73060	5.162	ug/L	0.00
Spiked Amount	5.000	Range 60 - 140	Recovery	=	103.200%	
41) Toluene-d8	7.310	98	198880	5.700	ug/L	0.00
Spiked Amount	5.000	Range 70 - 130	Recovery	=	114.000%	
43) trans-1,3-Dichloroprop...	7.619	79	19665	4.472	ug/L	0.00
Spiked Amount	5.000	Range 55 - 130	Recovery	=	89.400%	
46) 2-Hexanone-d5	8.088	63	107569	52.552	ug/L	0.00
Spiked Amount	50.000	Range 45 - 130	Recovery	=	105.100%	
56) 1,1,2,2-Tetrachloroeth...	10.210	84	46693	4.974	ug/L	0.00
Spiked Amount	5.000	Range 65 - 120	Recovery	=	99.400%	
66) 1,2-Dichlorobenzene-d4	11.615	152	58697	5.087	ug/L	0.00
Spiked Amount	5.000	Range 80 - 120	Recovery	=	101.800%	
Target Compounds						
2) Dichlorodifluoromethane	1.127	85	37721	5.062	ug/L	98
3) Chloromethane	1.240	50	68280	4.908	ug/L	97
5) Vinyl chloride	1.307	62	68876	4.982	ug/L	95
6) Bromomethane	1.519	94	32105	4.862	ug/L	100
8) Chloroethane	1.584	64	50582	5.382	ug/L	94
9) Trichlorofluoromethane	1.751	101	95899	5.206	ug/L	99
10) 1,1,2-Trichloro-1,2,2-...	2.114	101	57051	5.212	ug/L	97
12) 1,1-Dichloroethene	2.114	96	51490	5.302	ug/L	95
13) Acetone	2.188	43	83794	50.377	ug/L	96
14) Carbon disulfide	2.291	76	83019	3.702	ug/L	100
15) Methyl Acetate	2.436	43	25148	4.983	ug/L	95
16) Methylene chloride	2.503	84	65186	4.867	ug/L	95
17) Methyl tert-butyl Ether	2.764	73	135829	5.332	ug/L	99
18) trans-1,2-Dichloroethene	2.757	96	48079	4.919	ug/L	100
19) 1,1-Dichloroethane	3.185	63	124553	5.279	ug/L	97
21) 2-Butanone	3.989	43	158692	55.511	ug/L	83
22) cis-1,2-Dichloroethene	3.908	96	61082	5.213	ug/L	99
23) Bromochloromethane	4.243	128	23105	5.275	ug/L	94
25) Chloroform	4.368	83	120746	5.262	ug/L	97

Data Path : Z:\voasrv\HPCHEM1\MSVOA_V\Data\VW102822\
 Data File : VW028769.D
 Acq On : 28 Oct 2022 20:36
 Operator : SY/MD
 Sample : VSTDCCC005EC
 Misc : 25.0mL/MSVOA_V/WATER
 ALS Vial : 26 Sample Multiplier: 1

Instrument :
 MSVOA_V
 ClientSampleId :
 VSTD005340

Quant Time: Oct 28 21:56:44 2022
 Quant Method : Z:\voasrv\HPCHEM1\MSVOA_V\Method\SFAMVTR102522WMA.M
 Quant Title : TRACE VOA SFAM1.0
 QLast Update : Fri Oct 28 21:50:06 2022
 Response via : Initial Calibration

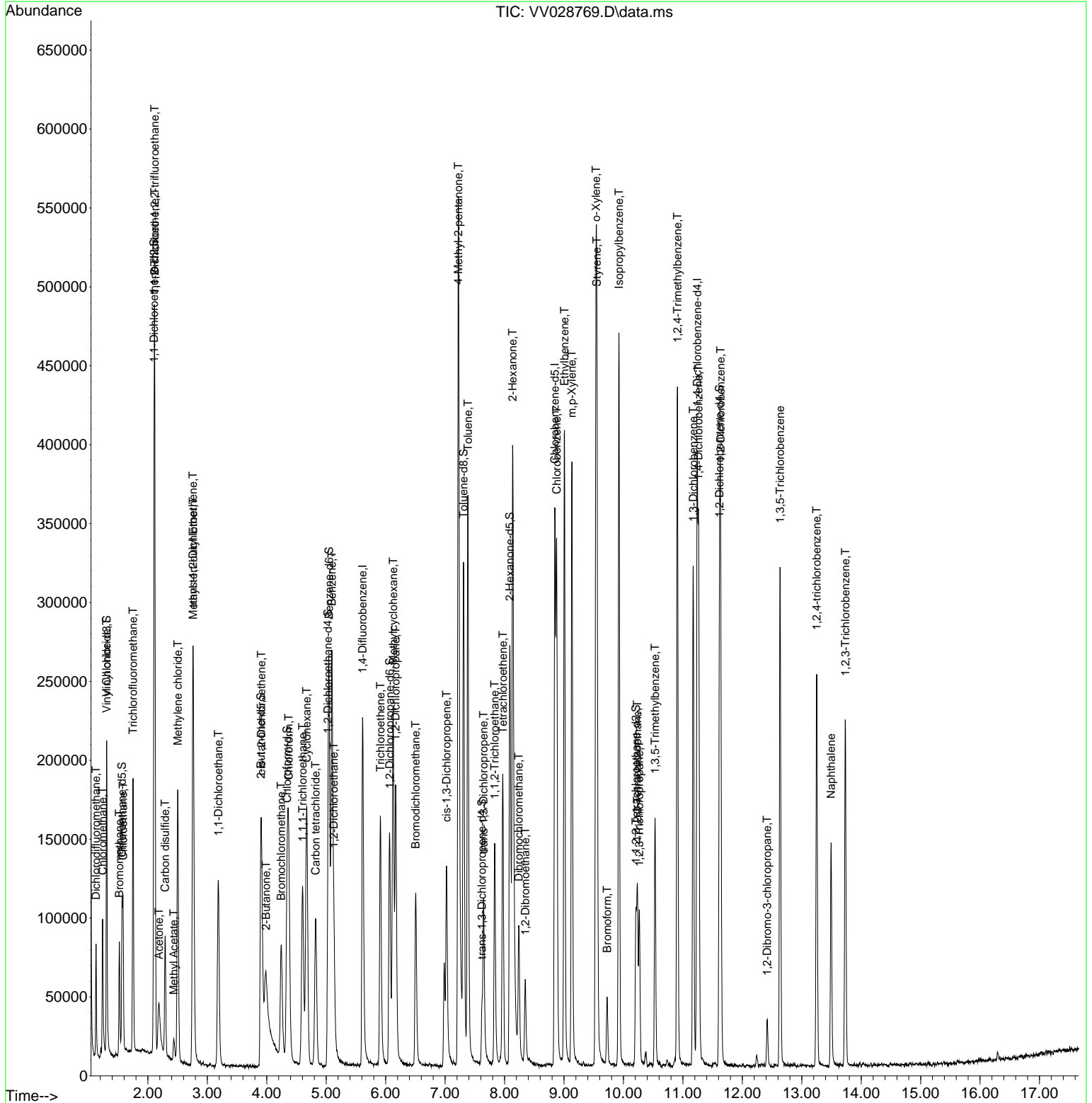
Compound	R.T.	QIon	Response	Conc	Units	Dev(Min)
27) 1,2-Dichloroethane	5.127	62	68501	5.051	ug/L	96
29) 1,1,1-Trichloroethane	4.603	97	86443	4.299	ug/L	98
30) Cyclohexane	4.670	56	89607	4.300	ug/L	99
31) Carbon tetrachloride	4.821	117	64355	3.984	ug/L	99
33) Benzene	5.095	78	246792	4.939	ug/L	100
34) Trichloroethene	5.911	95	56042	4.527	ug/L	93
35) Methylcyclohexane	6.127	83	83959	4.910	ug/L	97
37) 1,2-Dichloropropane	6.169	63	71714	5.617	ug/L	99
38) Bromodichloromethane	6.506	83	74132	4.856	ug/L	94
39) cis-1,3-Dichloropropene	7.024	75	77011	4.976	ug/L	100
40) 4-Methyl-2-pentanone	7.223	43	468848	62.023	ug/L	97
42) Toluene	7.384	91	248086	5.236	ug/L	100
44) trans-1,3-Dichloropropene	7.648	75	58257	4.670	ug/L	97
45) 1,1,2-Trichloroethane	7.834	97	42985	5.478	ug/L	98
47) Tetrachloroethene	7.972	164	38028	5.005	ug/L	97
48) 2-Hexanone	8.136	43	325969	60.944	ug/L	97
49) Dibromochloromethane	8.239	129	39118	4.759	ug/L	95
50) 1,2-Dibromoethane	8.349	107	34667	5.075	ug/L	99
51) Chlorobenzene	8.876	112	159967	5.362	ug/L	98
52) Ethylbenzene	9.008	91	272714	5.179	ug/L	99
53) m,p-Xylene	9.133	106	99909	5.255	ug/L	97
54) o-Xylene	9.538	106	99642	5.210	ug/L	97
55) Styrene	9.554	104	169768	5.264	ug/L	100
57) 1,1,2,2-Tetrachloroethane	10.236	83	55158	5.604	ug/L	100
59) Bromoform	9.725	173	17892	4.356	ug/L	97
60) Isopropylbenzene	9.924	105	279818	5.315	ug/L	99
61) 1,2,3-Trichloropropane	10.268	75	38999	5.429	ug/L	97
62) 1,3,5-Trimethylbenzene	10.532	105	78755	5.128	ug/L	99
63) 1,2,4-Trimethylbenzene	10.908	105	222519	5.232	ug/L	98
64) 1,3-Dichlorobenzene	11.175	146	115438	5.091	ug/L	99
65) 1,4-Dichlorobenzene	11.265	146	115368	5.099	ug/L	98
67) 1,2-Dichlorobenzene	11.635	146	109526	5.282	ug/L	98
68) 1,2-Dibromo-3-chloropr...	12.419	75	6532	4.417	ug/L	89
69) 1,3,5-Trichlorobenzene	12.635	180	83047	4.823	ug/L	99
70) 1,2,4-trichlorobenzene	13.252	180	64130	4.892	ug/L	97
71) Naphthalene	13.493	128	100510	4.474	ug/L	98
72) 1,2,3-Trichlorobenzene	13.734	180	59851	5.151	ug/L	99

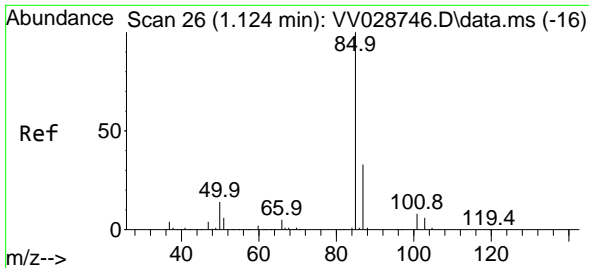
(#) = qualifier out of range (m) = manual integration (+) = signals summed

Data Path : Z:\voasrv\HPCHEM1\MSVOA_V\Data\VV102822\
 Data File : VV028769.D
 Acq On : 28 Oct 2022 20:36
 Operator : SY/MD
 Sample : VSTDC005EC
 Misc : 25.0mL/MSVOA_V/WATER
 ALS Vial : 26 Sample Multiplier: 1

Instrument :
 MSVOA_V
 ClientSampleId :
 VSTD005340

Quant Time: Oct 28 21:56:44 2022
 Quant Method : Z:\voasrv\HPCHEM1\MSVOA_V\Method\SFAMVTR102522WMA.M
 Quant Title : TRACE VOA SFAM1.0
 QLast Update : Fri Oct 28 21:50:06 2022
 Response via : Initial Calibration

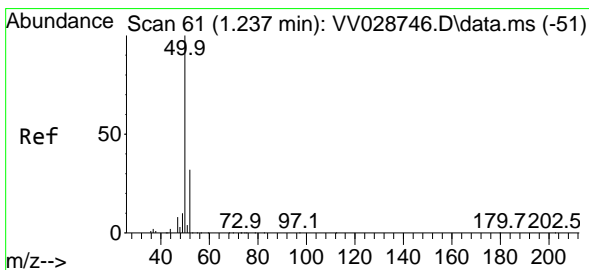
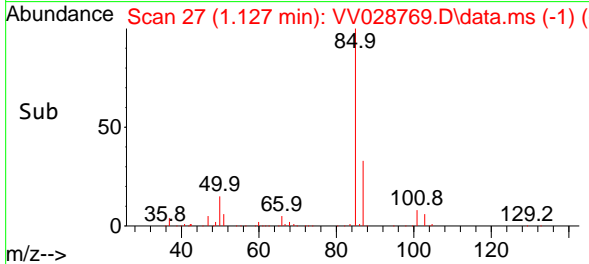
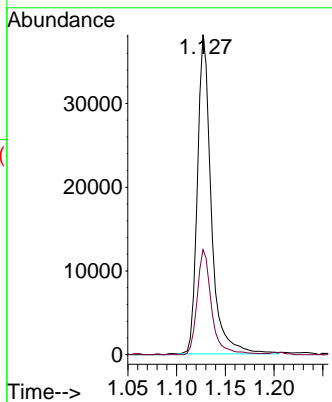
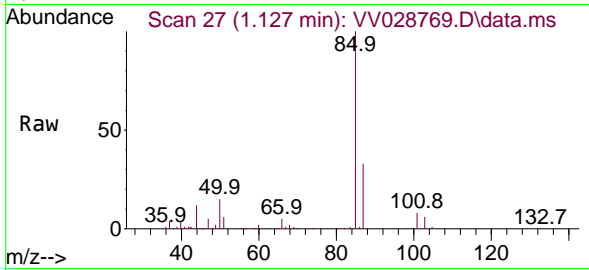




#2
 Dichlorodifluoromethane
 Concen: 5.062 ug/L
 RT: 1.127 min Scan# 21
 Delta R.T. 0.003 min
 Lab File: VV028769.D
 Acq: 28 Oct 2022 20:36

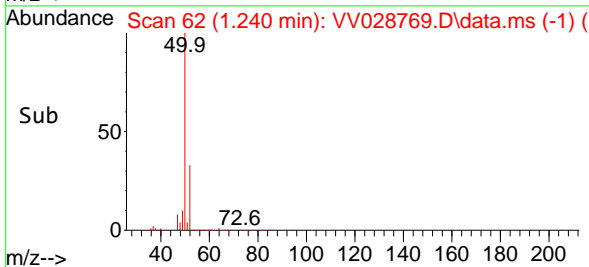
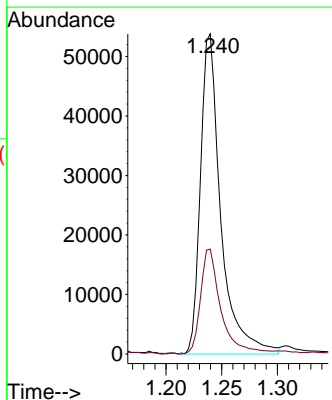
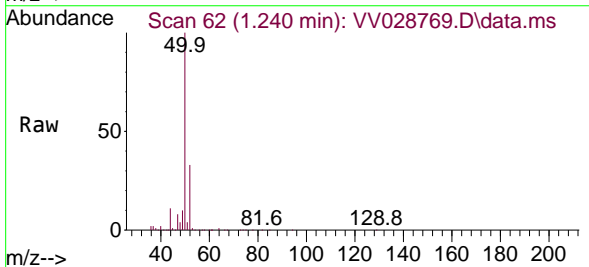
Instrument :
 MSVOA_V
 ClientSampleId :
 VSTD005340

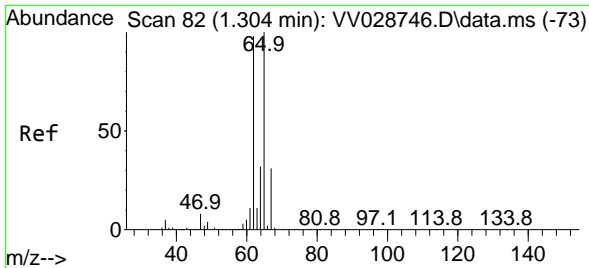
Tgt Ion: 85 Resp: 37721
 Ion Ratio Lower Upper
 85 100
 87 34.4 26.6 40.0



#3
 Chloromethane
 Concen: 4.908 ug/L
 RT: 1.240 min Scan# 62
 Delta R.T. 0.003 min
 Lab File: VV028769.D
 Acq: 28 Oct 2022 20:36

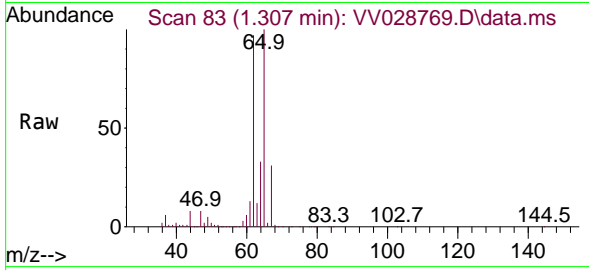
Tgt Ion: 50 Resp: 68280
 Ion Ratio Lower Upper
 50 100
 52 32.8 21.8 40.6



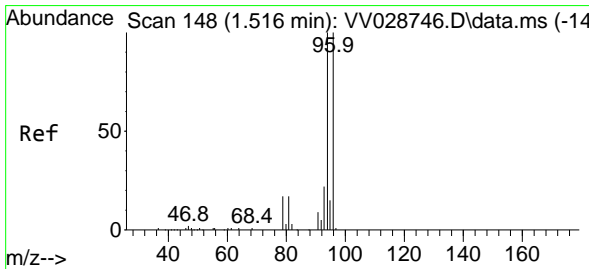
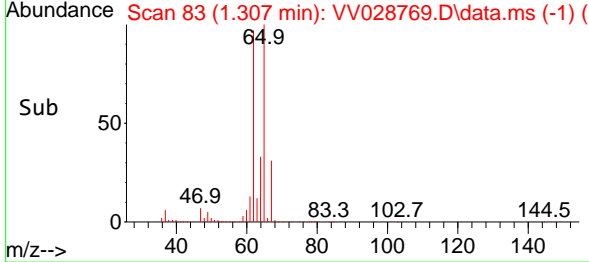
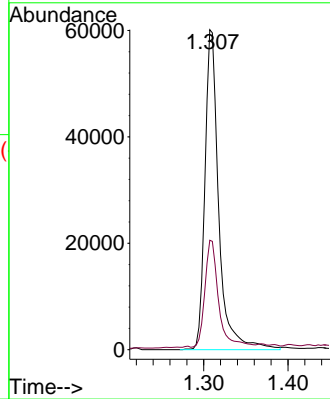


#5
 Vinyl chloride
 Concen: 4.982 ug/L
 RT: 1.307 min Scan# 81
 Delta R.T. 0.003 min
 Lab File: VV028769.D
 Acq: 28 Oct 2022 20:36

Instrument :
 MSVOA_V
 ClientSampleId :
 VSTD005340

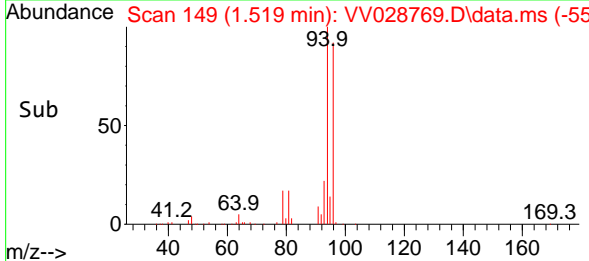
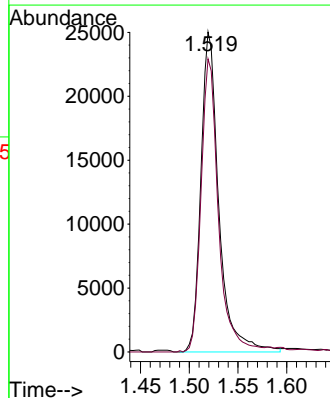
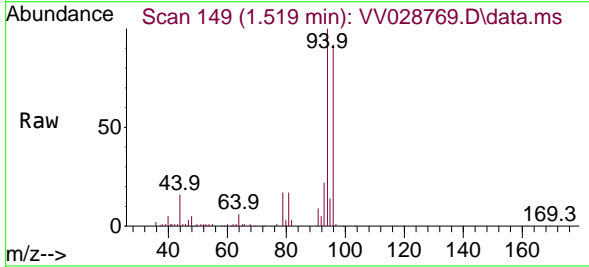


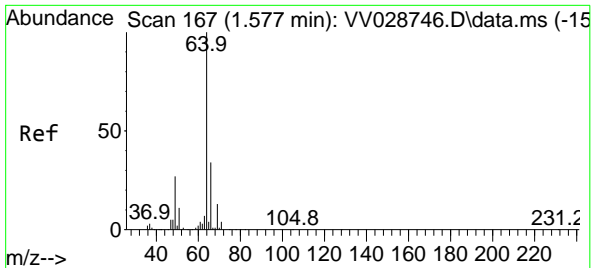
Tgt Ion: 62 Resp: 68876
 Ion Ratio Lower Upper
 62 100
 64 34.2 22.0 41.0



#6
 Bromomethane
 Concen: 4.862 ug/L
 RT: 1.519 min Scan# 149
 Delta R.T. 0.003 min
 Lab File: VV028769.D
 Acq: 28 Oct 2022 20:36

Tgt Ion: 94 Resp: 32105
 Ion Ratio Lower Upper
 94 100
 96 91.6 64.3 119.3

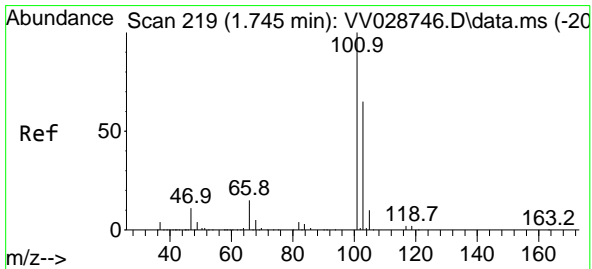
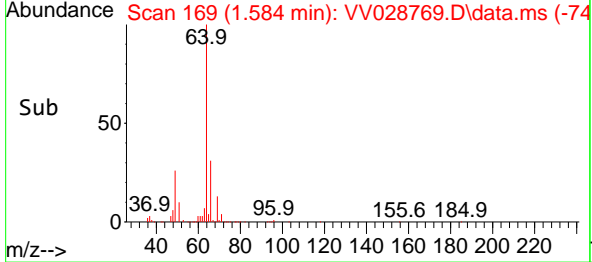
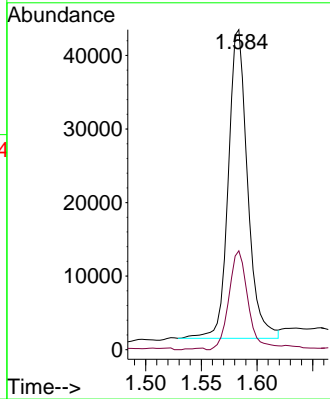
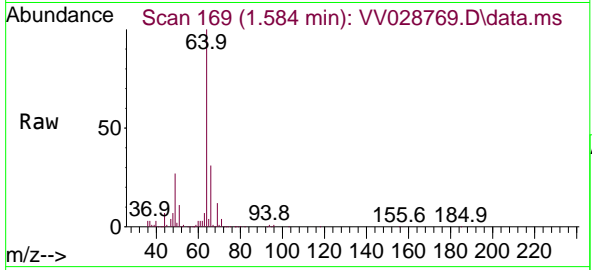




#8
 Chloroethane
 Concen: 5.382 ug/L
 RT: 1.584 min Scan# 11
 Delta R.T. 0.006 min
 Lab File: VV028769.D
 Acq: 28 Oct 2022 20:36

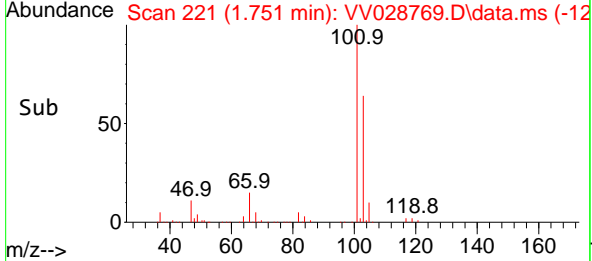
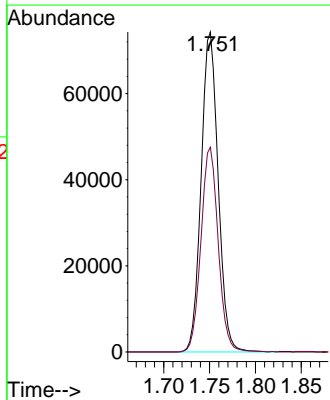
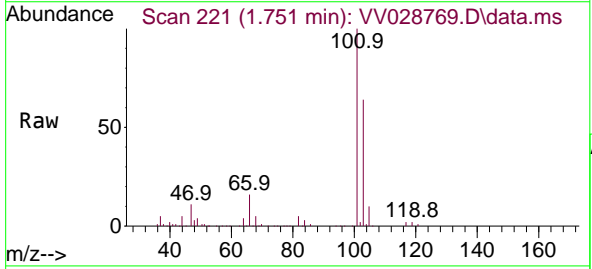
Instrument : MSVOA_V
 ClientSampleId : VSTD005340

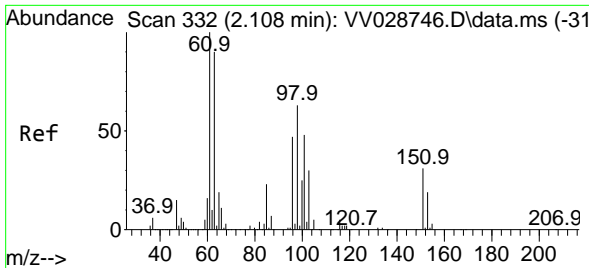
Tgt Ion: 64 Resp: 50582
 Ion Ratio Lower Upper
 64 100
 66 30.9 23.9 44.5



#9
 Trichlorofluoromethane
 Concen: 5.206 ug/L
 RT: 1.751 min Scan# 221
 Delta R.T. 0.006 min
 Lab File: VV028769.D
 Acq: 28 Oct 2022 20:36

Tgt Ion:101 Resp: 95899
 Ion Ratio Lower Upper
 101 100
 103 64.9 51.0 76.6

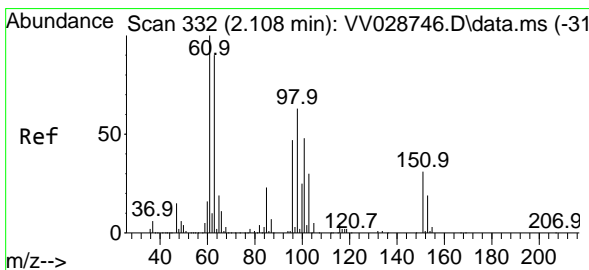
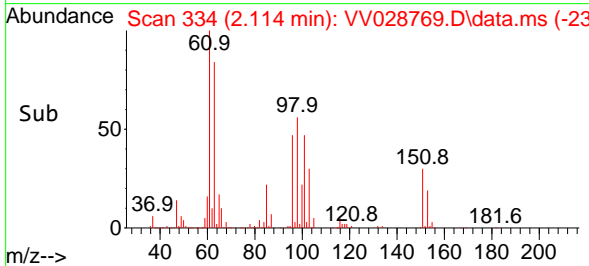
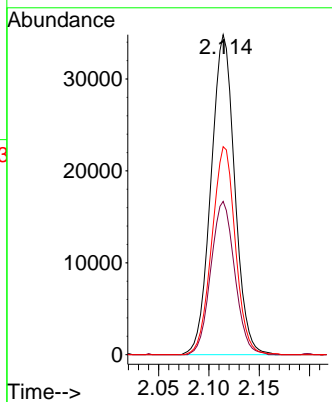
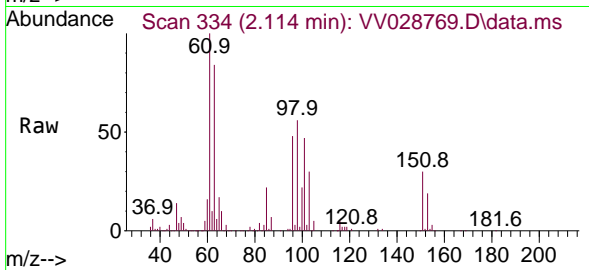




#10
 1,1,2-Trichloro-1,2,2-trifluoroethane
 Concen: 5.212 ug/L
 RT: 2.114 min Scan# 311
 Delta R.T. 0.006 min
 Lab File: VV028769.D
 Acq: 28 Oct 2022 20:36

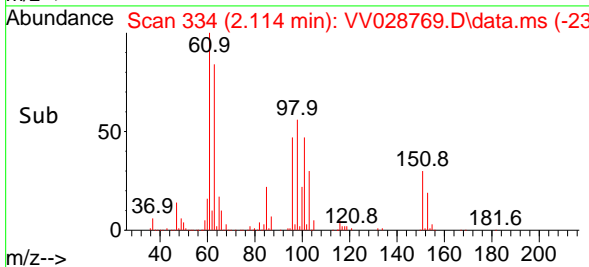
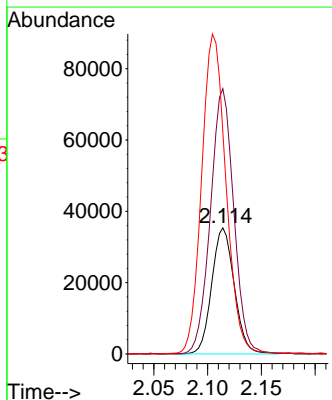
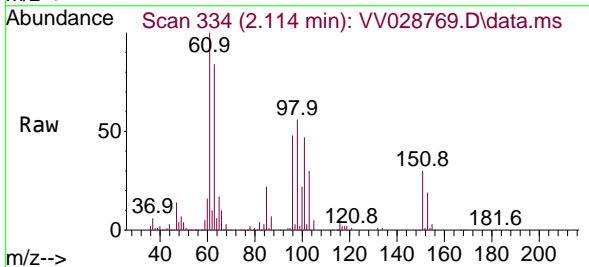
Instrument : MSVOA_V
 ClientSampleId : VSTD005340

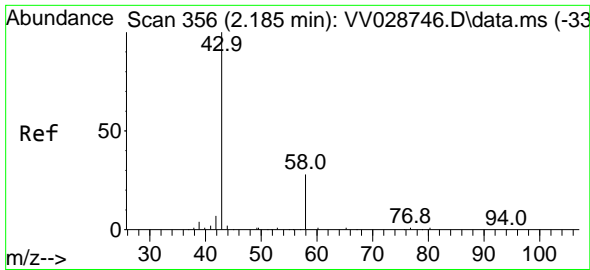
Tgt Ion	Resp	Lower	Upper
101	57051		
85	48.2	37.0	55.6
151	64.6	50.2	75.2



#12
 1,1-Dichloroethene
 Concen: 5.302 ug/L
 RT: 2.114 min Scan# 334
 Delta R.T. 0.006 min
 Lab File: VV028769.D
 Acq: 28 Oct 2022 20:36

Tgt Ion	Resp	Lower	Upper
96	51490		
61	210.5	148.1	275.1
63	176.4	133.3	247.7

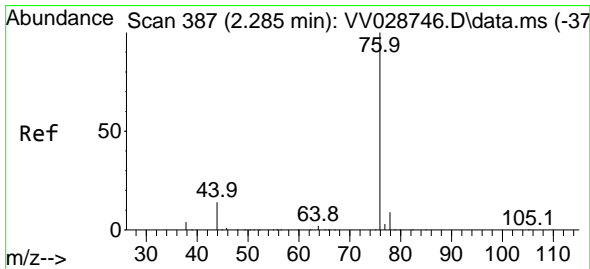
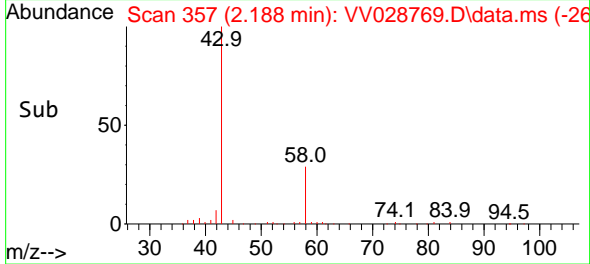
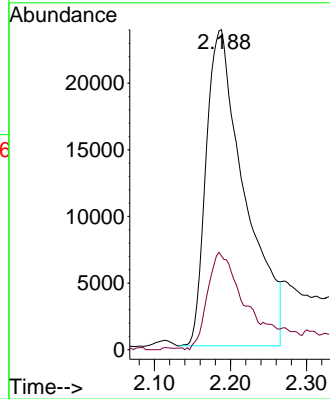
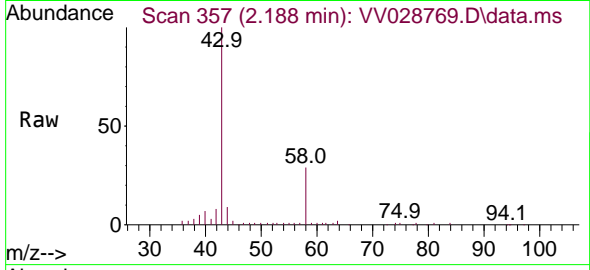




#13
 Acetone
 Concen: 50.377 ug/L
 RT: 2.188 min Scan# 311
 Delta R.T. 0.003 min
 Lab File: VV028769.D
 Acq: 28 Oct 2022 20:36

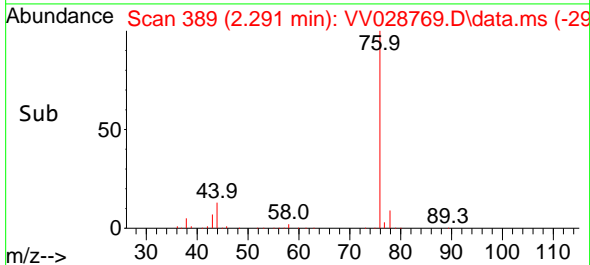
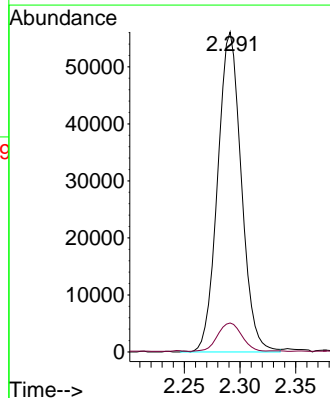
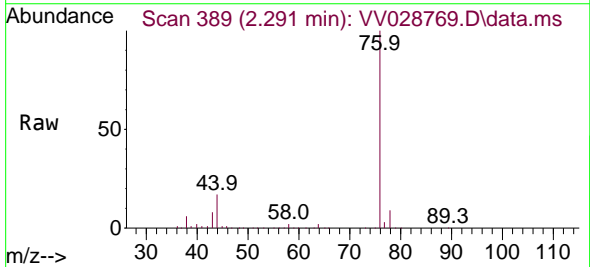
Instrument : MSVOA_V
 ClientSampleId : VSTD005340

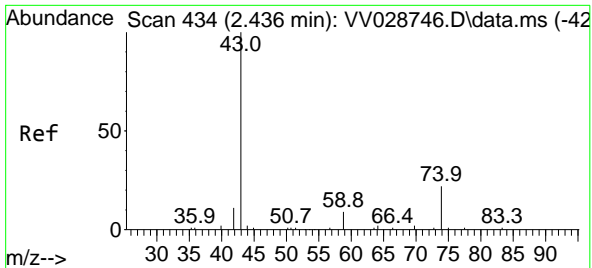
Tgt Ion: 43 Resp: 83794
 Ion Ratio Lower Upper
 43 100
 58 27.0 0.0 50.2



#14
 Carbon disulfide
 Concen: 3.702 ug/L
 RT: 2.291 min Scan# 389
 Delta R.T. 0.006 min
 Lab File: VV028769.D
 Acq: 28 Oct 2022 20:36

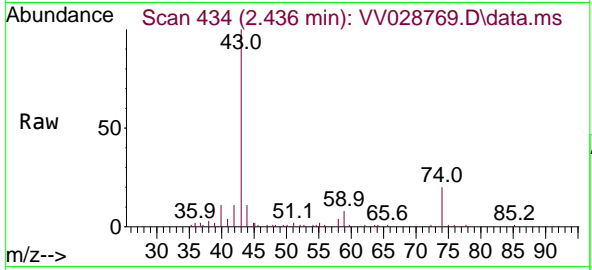
Tgt Ion: 76 Resp: 83019
 Ion Ratio Lower Upper
 76 100
 78 9.0 7.1 10.7



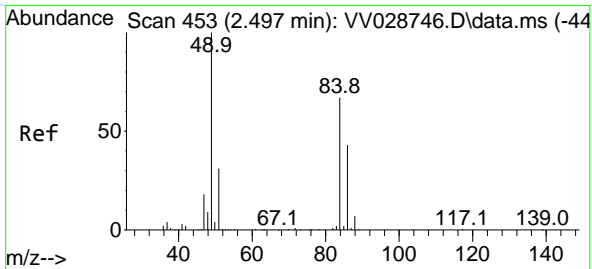
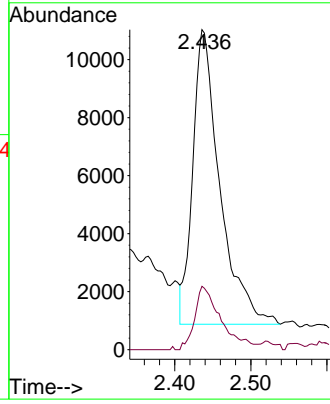
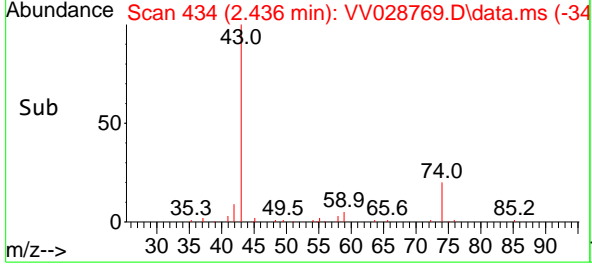


#15
 Methyl Acetate
 Concen: 4.983 ug/L
 RT: 2.436 min Scan# 41
 Delta R.T. -0.000 min
 Lab File: VV028769.D
 Acq: 28 Oct 2022 20:36

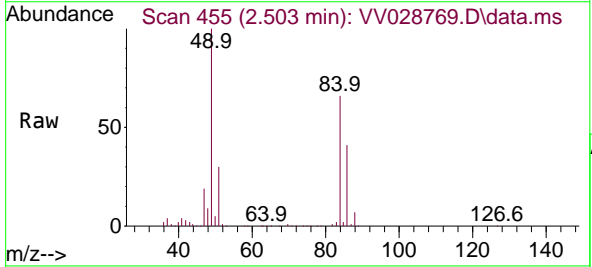
Instrument : MSVOA_V
 ClientSampleId : VSTD005340



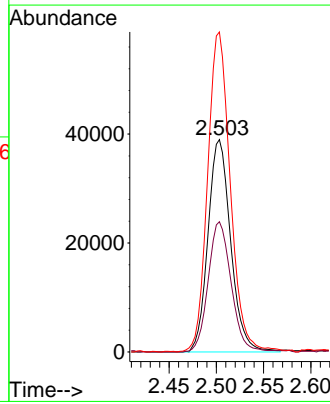
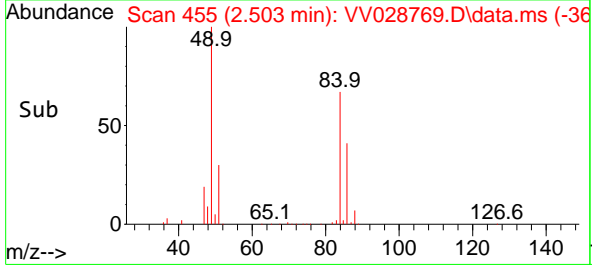
Tgt Ion: 43 Resp: 25148
 Ion Ratio Lower Upper
 43 100
 74 20.9 14.9 22.3

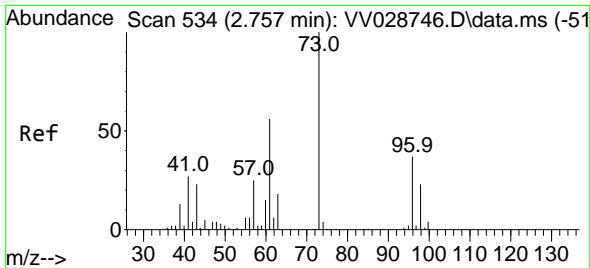


#16
 Methylene chloride
 Concen: 4.867 ug/L
 RT: 2.503 min Scan# 455
 Delta R.T. 0.006 min
 Lab File: VV028769.D
 Acq: 28 Oct 2022 20:36



Tgt Ion: 84 Resp: 65186
 Ion Ratio Lower Upper
 84 100
 86 61.3 44.4 82.4
 49 150.7 110.8 205.8

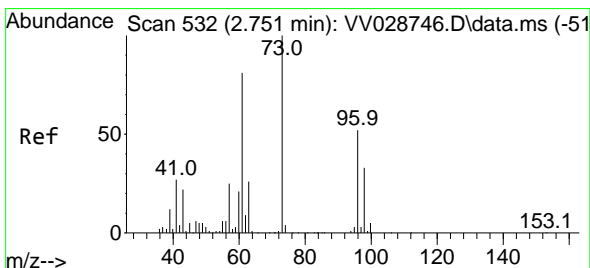
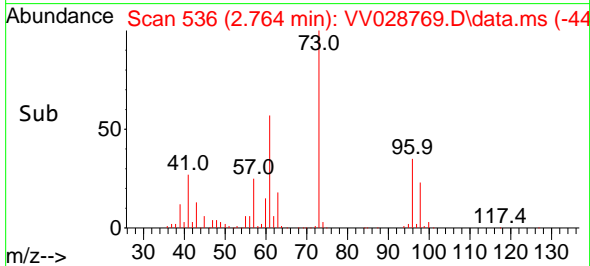
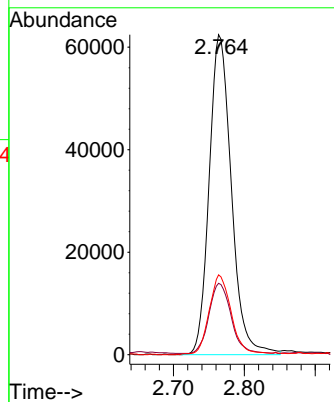
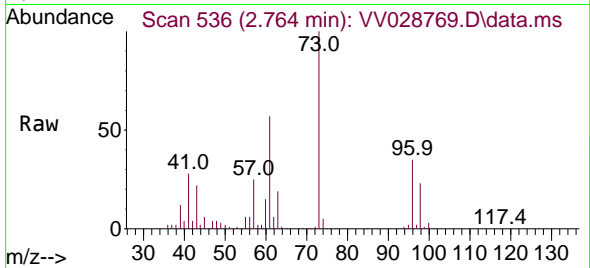




#17
 Methyl tert-butyl Ether
 Concen: 5.332 ug/L
 RT: 2.764 min Scan# 51
 Delta R.T. 0.006 min
 Lab File: VV028769.D
 Acq: 28 Oct 2022 20:36

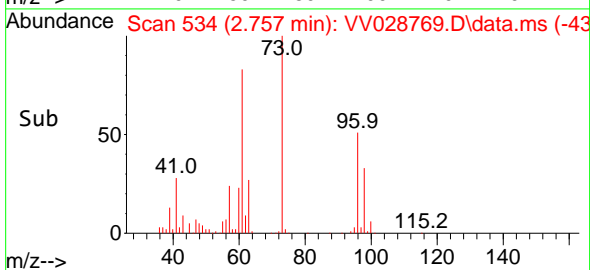
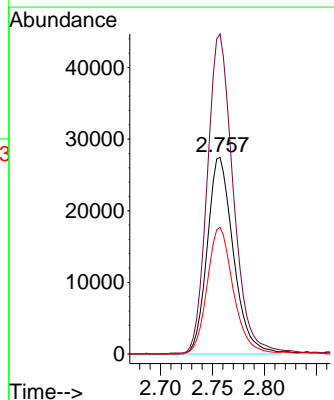
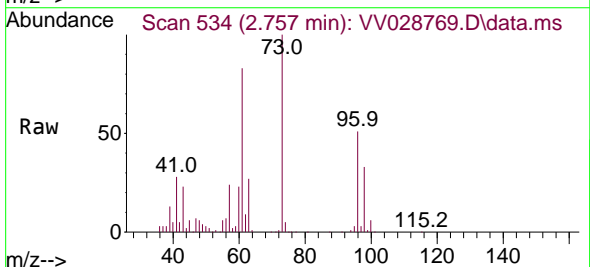
Instrument :
 MSVOA_V
 ClientSampleId :
 VSTD005340

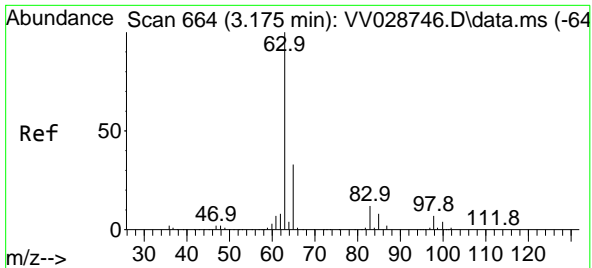
Tgt Ion: 73 Resp: 135829
 Ion Ratio Lower Upper
 73 100
 43 21.8 18.0 27.0
 57 24.8 20.0 30.0



#18
 trans-1,2-Dichloroethene
 Concen: 4.919 ug/L
 RT: 2.757 min Scan# 534
 Delta R.T. 0.006 min
 Lab File: VV028769.D
 Acq: 28 Oct 2022 20:36

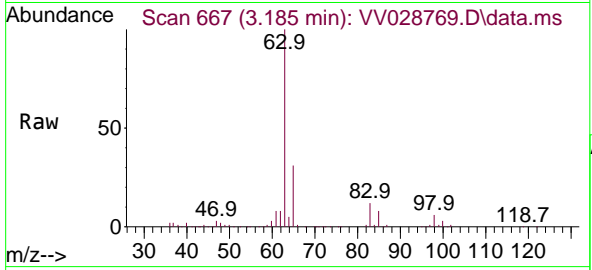
Tgt Ion: 96 Resp: 48079
 Ion Ratio Lower Upper
 96 100
 61 162.7 114.3 212.3
 98 64.4 45.0 83.6





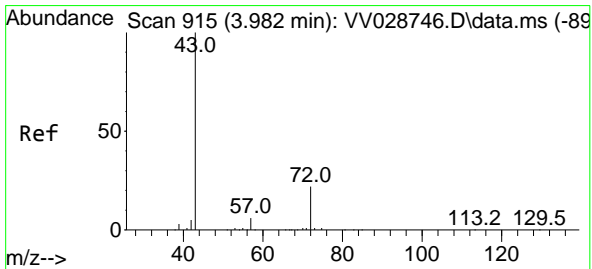
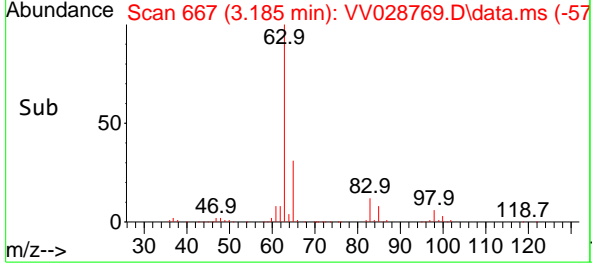
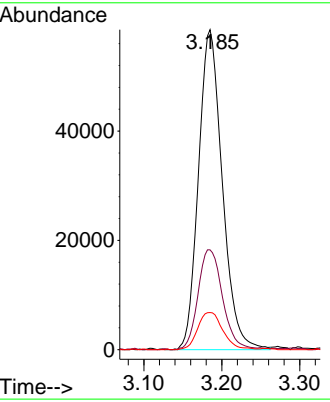
#19
 1,1-Dichloroethane
 Concen: 5.279 ug/L
 RT: 3.185 min Scan# 60
 Delta R.T. 0.009 min
 Lab File: VV028769.D
 Acq: 28 Oct 2022 20:36

Instrument : MSVOA_V
 ClientSampleId : VSTD005340

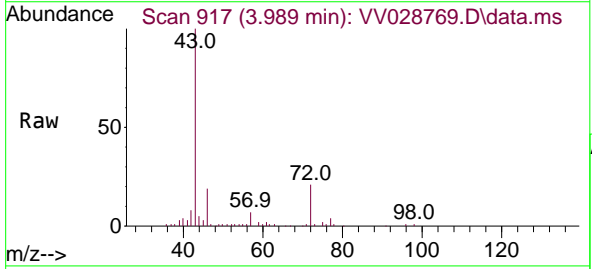


Tgt Ion: 63 Resp: 124553

Ion	Ratio	Lower	Upper
63	100		
65	31.2	23.1	42.9
83	11.6	7.9	14.7

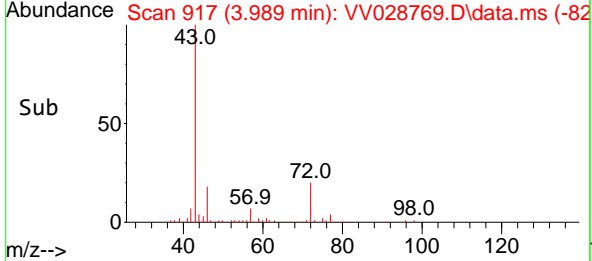
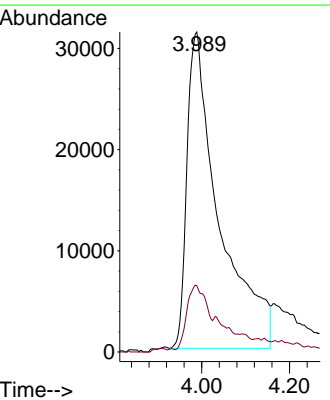


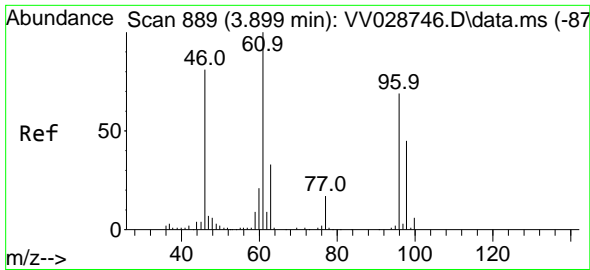
#21
 2-Butanone
 Concen: 55.511 ug/L
 RT: 3.989 min Scan# 917
 Delta R.T. 0.006 min
 Lab File: VV028769.D
 Acq: 28 Oct 2022 20:36



Tgt Ion: 43 Resp: 158692

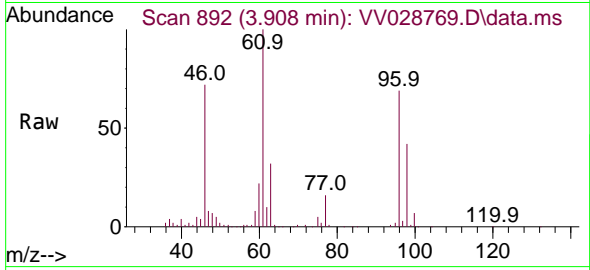
Ion	Ratio	Lower	Upper
43	100		
72	12.5	10.2	30.4



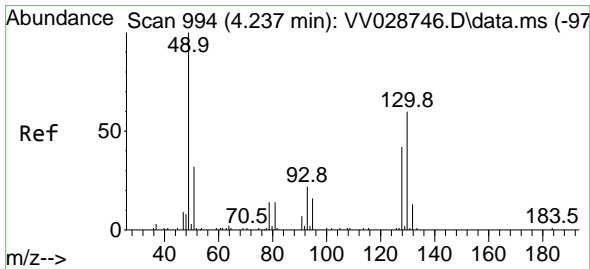
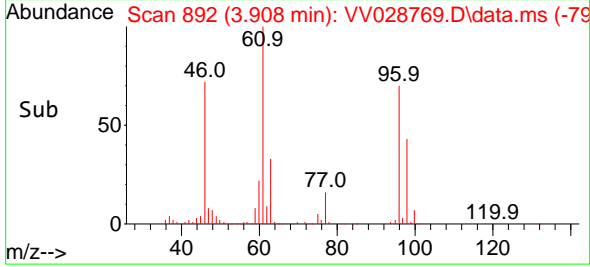
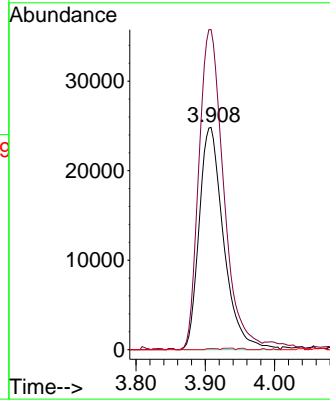


#22
 cis-1,2-Dichloroethene
 Concen: 5.213 ug/L
 RT: 3.908 min Scan# 891
 Delta R.T. 0.009 min
 Lab File: VV028769.D
 Acq: 28 Oct 2022 20:36

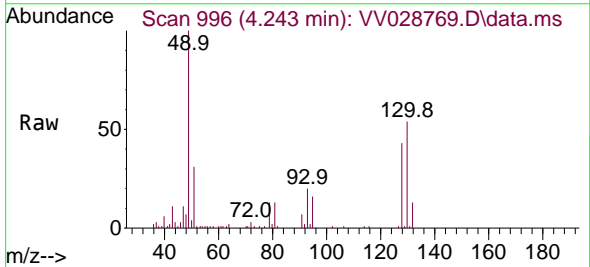
Instrument :
 MSVOA_V
 ClientSampleId :
 VSTD005340



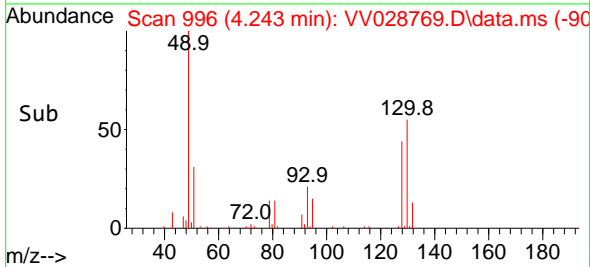
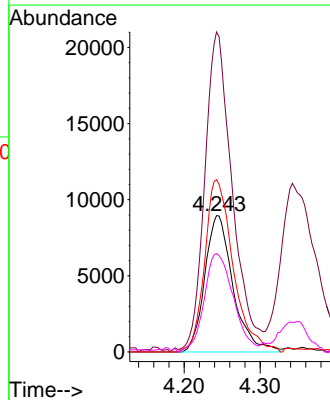
Tgt Ion: 96 Resp: 61082
 Ion Ratio Lower Upper
 96 100
 61 143.9 101.4 188.2
 68 0.5 0.5 0.9

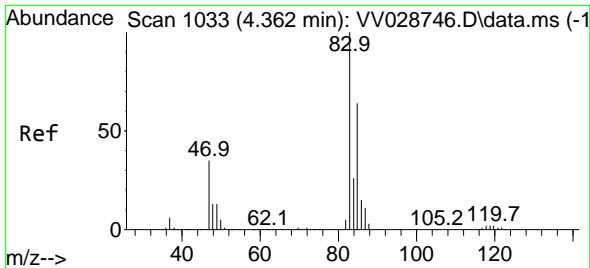


#23
 Bromochloromethane
 Concen: 5.275 ug/L
 RT: 4.243 min Scan# 996
 Delta R.T. 0.006 min
 Lab File: VV028769.D
 Acq: 28 Oct 2022 20:36



Tgt Ion: 128 Resp: 23105
 Ion Ratio Lower Upper
 128 100
 49 234.8 171.1 317.7
 130 126.5 86.4 160.4
 51 72.2 65.9 98.9

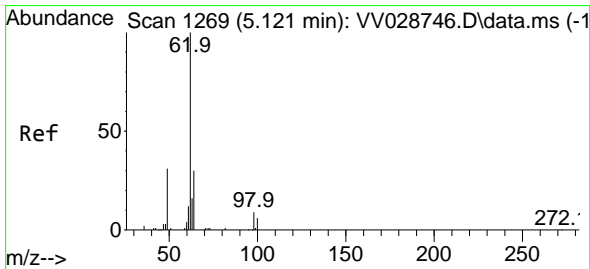
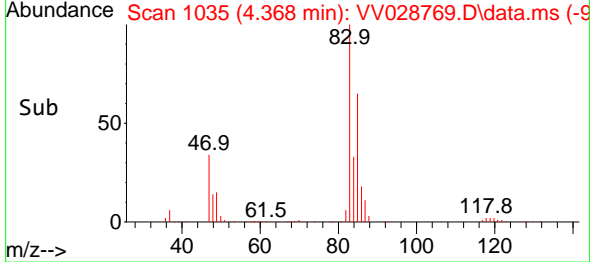
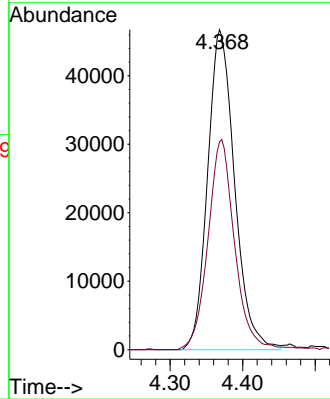
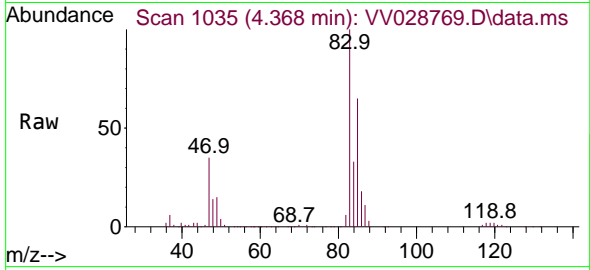




#25
 Chloroform
 Concen: 5.262 ug/L
 RT: 4.368 min Scan# 1035
 Delta R.T. 0.006 min
 Lab File: VV028769.D
 Acq: 28 Oct 2022 20:36

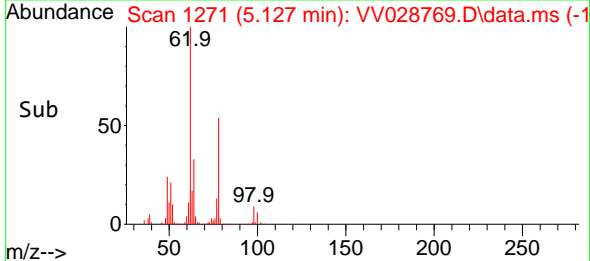
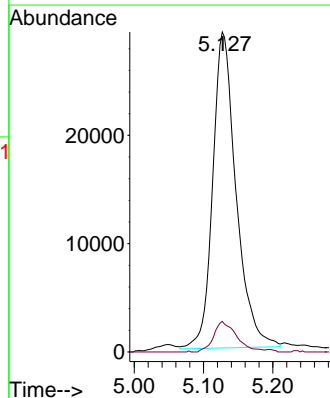
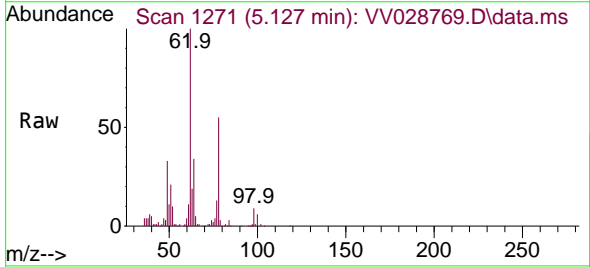
Instrument : MSVOA_V
 ClientSampleId : VSTD005340

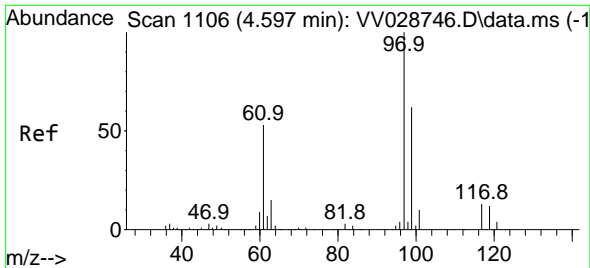
Tgt Ion: 83 Resp: 120746
 Ion Ratio Lower Upper
 83 100
 85 65.0 44.1 81.9



#27
 1,2-Dichloroethane
 Concen: 5.051 ug/L
 RT: 5.127 min Scan# 1271
 Delta R.T. 0.006 min
 Lab File: VV028769.D
 Acq: 28 Oct 2022 20:36

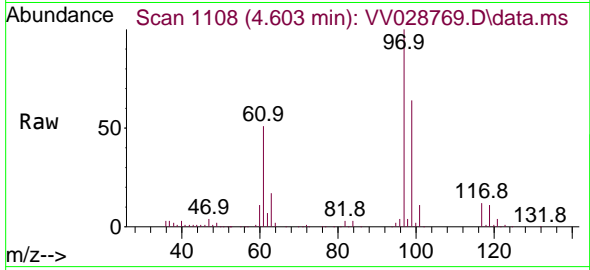
Tgt Ion: 62 Resp: 68501
 Ion Ratio Lower Upper
 62 100
 98 9.6 6.6 9.8



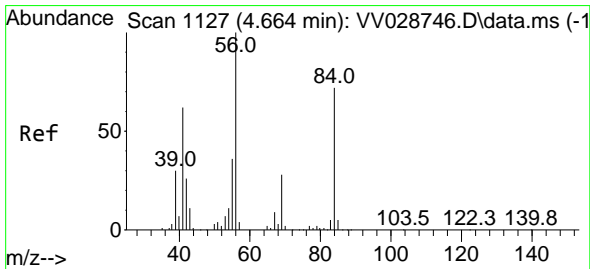
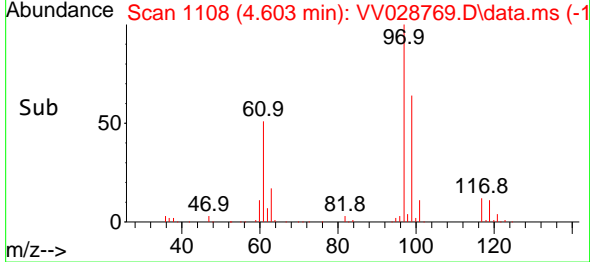
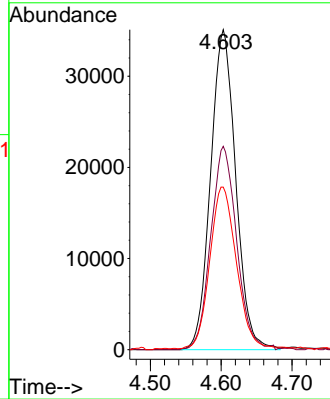


#29
 1,1,1-Trichloroethane
 Concen: 4.299 ug/L
 RT: 4.603 min Scan# 1108
 Delta R.T. 0.006 min
 Lab File: VV028769.D
 Acq: 28 Oct 2022 20:36

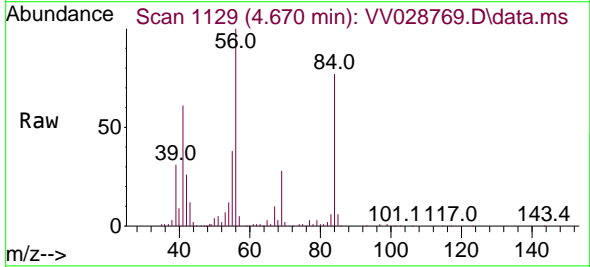
Instrument : MSVOA_V
 ClientSampleId : VSTD005340



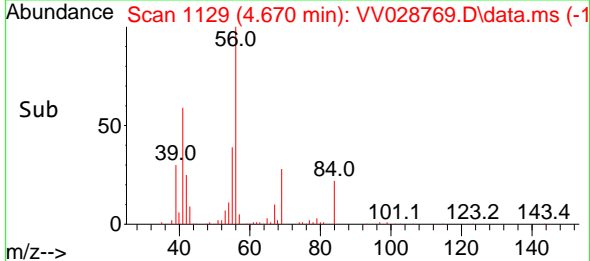
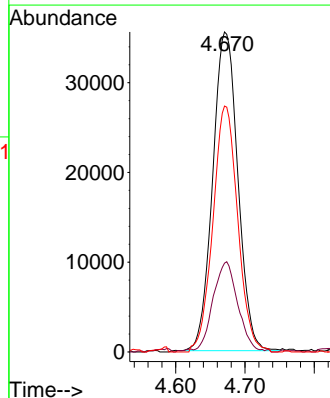
Tgt Ion: 97 Resp: 86443
 Ion Ratio Lower Upper
 97 100
 99 65.2 50.5 75.7
 61 53.6 43.1 64.7

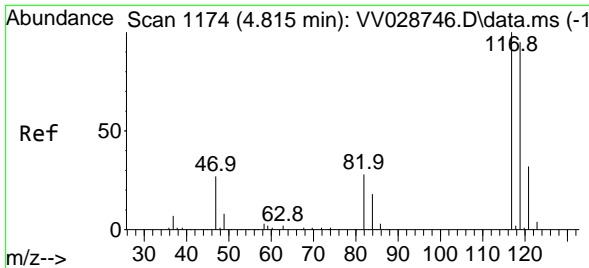


#30
 Cyclohexane
 Concen: 4.300 ug/L
 RT: 4.670 min Scan# 1129
 Delta R.T. 0.006 min
 Lab File: VV028769.D
 Acq: 28 Oct 2022 20:36



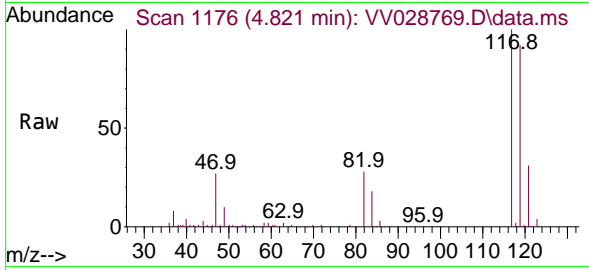
Tgt Ion: 56 Resp: 89607
 Ion Ratio Lower Upper
 56 100
 69 28.4 22.6 34.0
 84 76.1 60.4 90.6



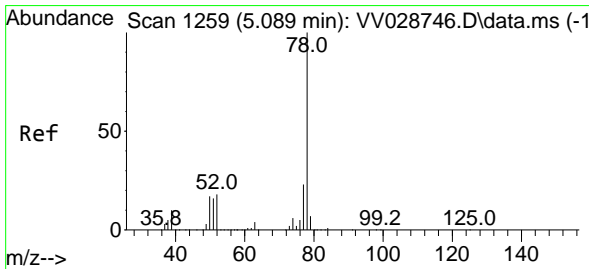
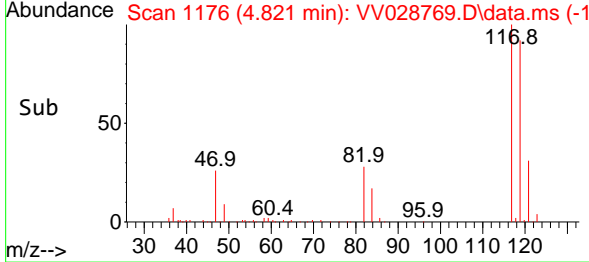
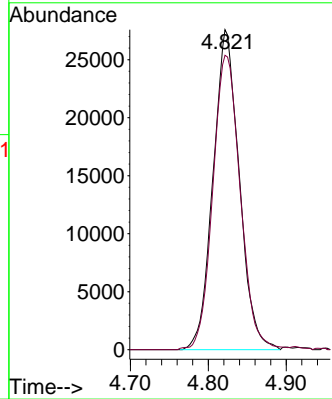


#31
 Carbon tetrachloride
 Concen: 3.984 ug/L
 RT: 4.821 min Scan# 1176
 Delta R.T. 0.006 min
 Lab File: VV028769.D
 Acq: 28 Oct 2022 20:36

Instrument : MSVOA_V
 ClientSampleId : VSTD005340

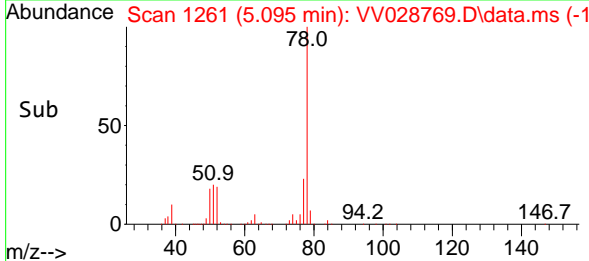
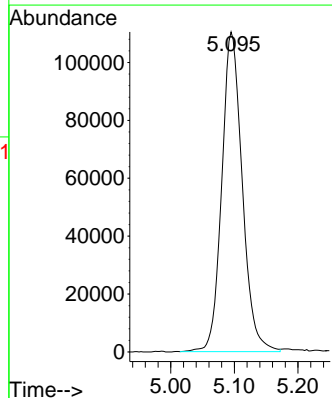
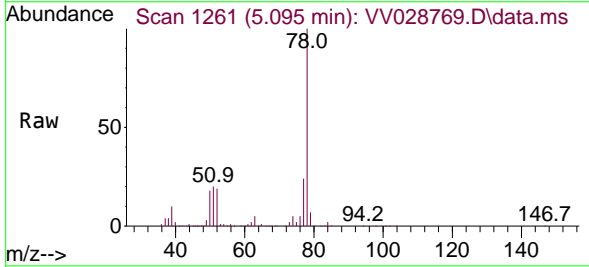


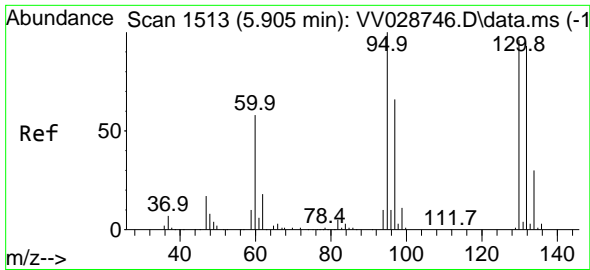
Tgt Ion:117 Resp: 64355
 Ion Ratio Lower Upper
 117 100
 119 96.2 76.1 114.1



#33
 Benzene
 Concen: 4.939 ug/L
 RT: 5.095 min Scan# 1261
 Delta R.T. 0.006 min
 Lab File: VV028769.D
 Acq: 28 Oct 2022 20:36

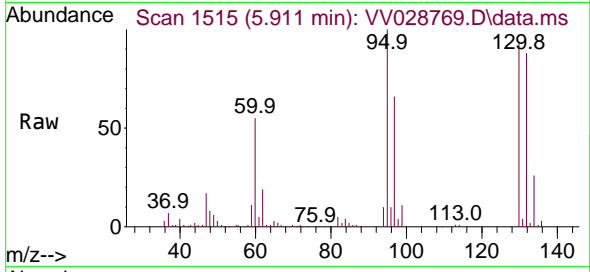
Tgt Ion: 78 Resp: 246792



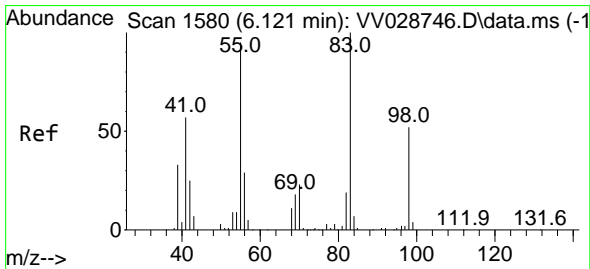
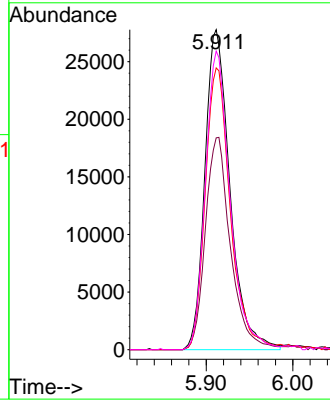
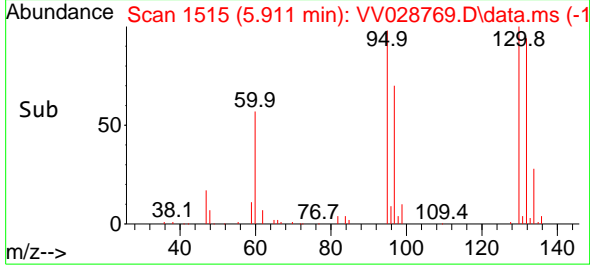


#34
 Trichloroethene
 Concen: 4.527 ug/L
 RT: 5.911 min Scan# 1515
 Delta R.T. 0.006 min
 Lab File: VV028769.D
 Acq: 28 Oct 2022 20:36

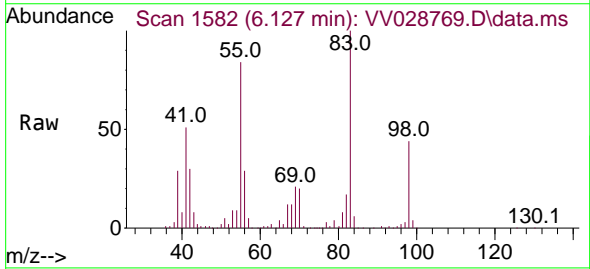
Instrument : MSVOA_V
 ClientSampleId : VSTD005340



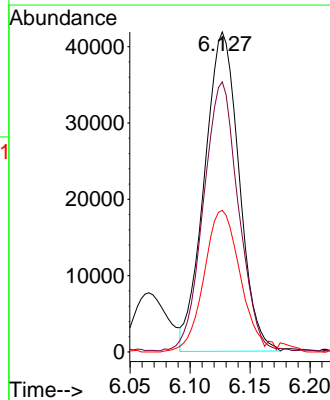
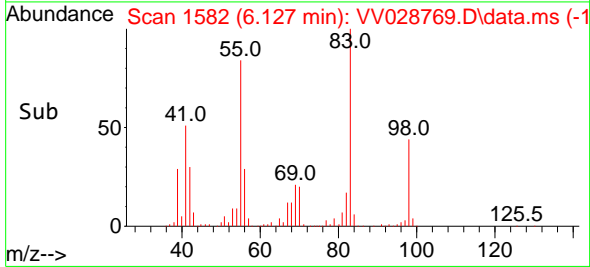
Tgt Ion: 95 Resp: 56042
 Ion Ratio Lower Upper
 95 100
 97 66.2 43.5 80.9
 132 88.1 56.5 104.9
 130 93.3 61.0 113.2

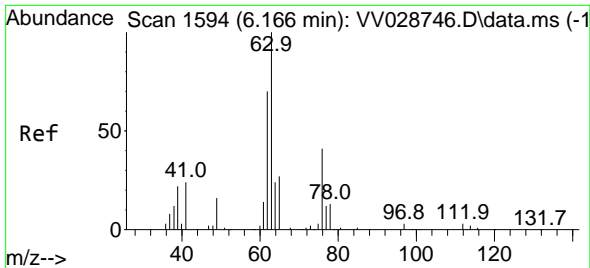


#35
 Methylcyclohexane
 Concen: 4.910 ug/L
 RT: 6.127 min Scan# 1582
 Delta R.T. 0.006 min
 Lab File: VV028769.D
 Acq: 28 Oct 2022 20:36



Tgt Ion: 83 Resp: 83959
 Ion Ratio Lower Upper
 83 100
 55 84.7 70.0 105.0
 98 46.6 35.6 53.4

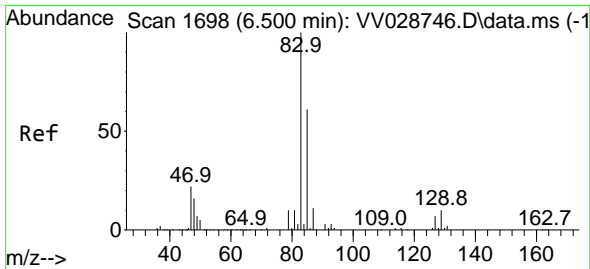
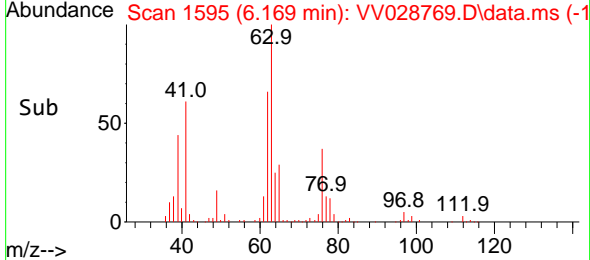
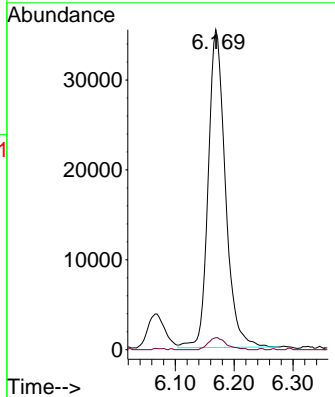
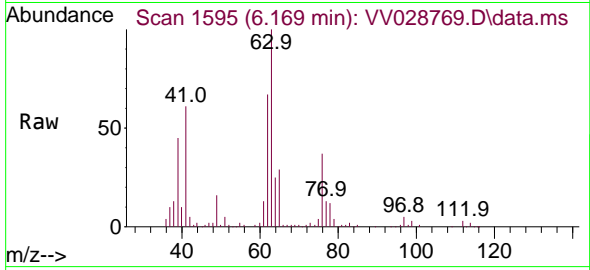




#37
 1,2-Dichloropropane
 Concen: 5.617 ug/L
 RT: 6.169 min Scan# 1111
 Delta R.T. 0.003 min
 Lab File: VV028769.D
 Acq: 28 Oct 2022 20:36

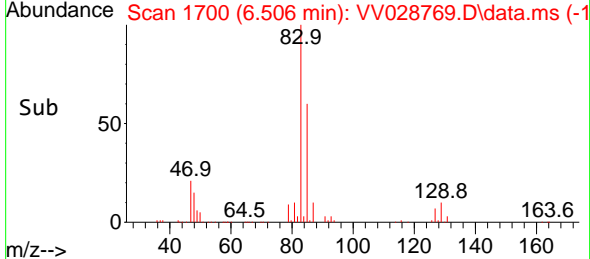
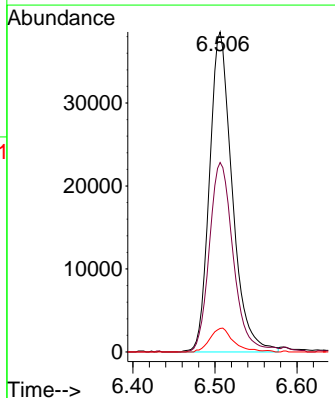
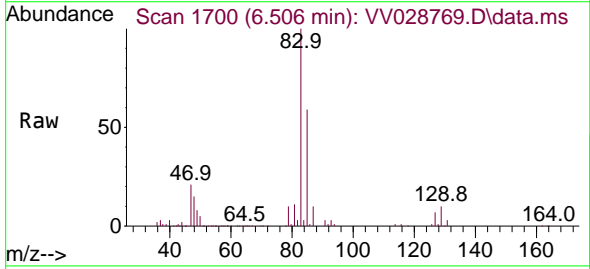
Instrument : MSVOA_V
 ClientSampleId : VSTD005340

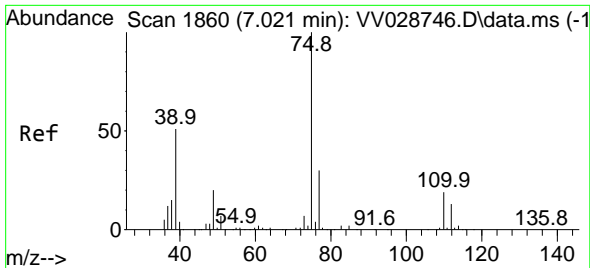
Tgt Ion: 63 Resp: 71714
 Ion Ratio Lower Upper
 63 100
 112 4.0 3.4 5.2



#38
 Bromodichloromethane
 Concen: 4.856 ug/L
 RT: 6.506 min Scan# 1700
 Delta R.T. 0.006 min
 Lab File: VV028769.D
 Acq: 28 Oct 2022 20:36

Tgt Ion: 83 Resp: 74132
 Ion Ratio Lower Upper
 83 100
 85 59.2 45.1 83.9
 127 7.3 5.7 8.5





#39
 cis-1,3-Dichloropropene
 Concen: 4.976 ug/L
 RT: 7.024 min Scan# 1861
 Delta R.T. 0.003 min
 Lab File: VV028769.D
 Acq: 28 Oct 2022 20:36

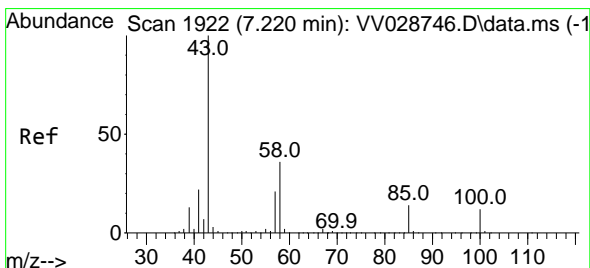
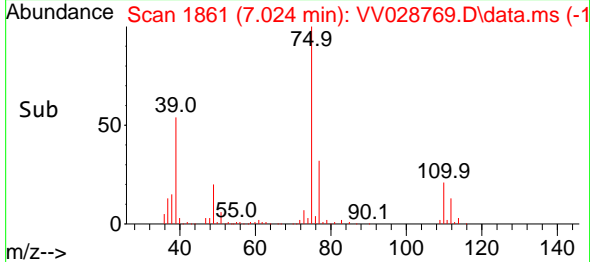
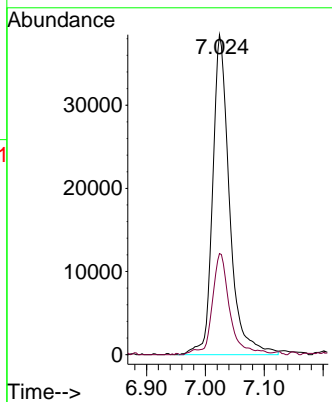
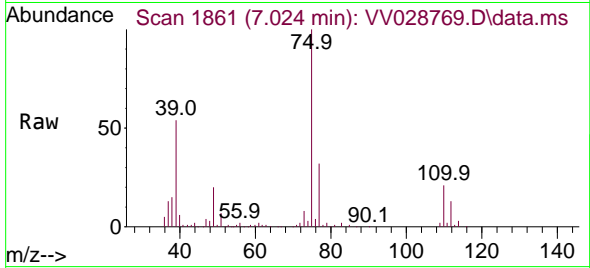
Instrument :

MSVOA_V

ClientSampleId :

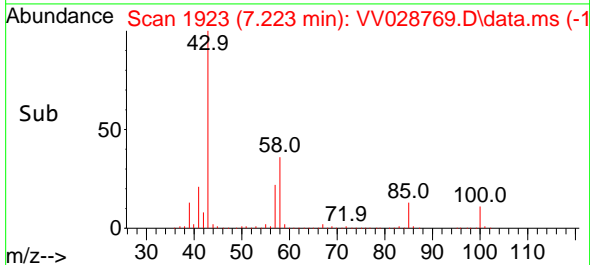
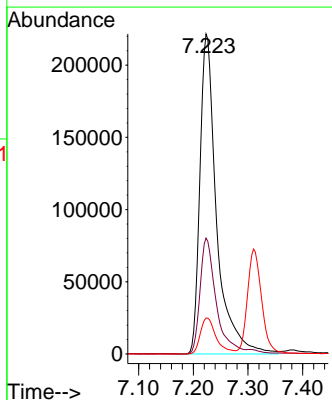
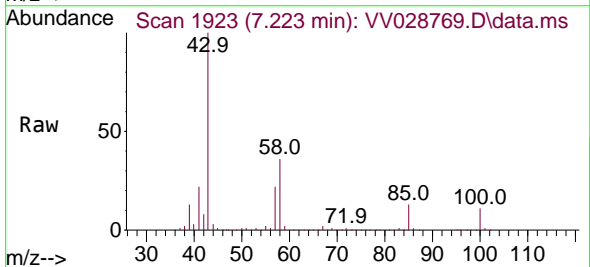
VSTD005340

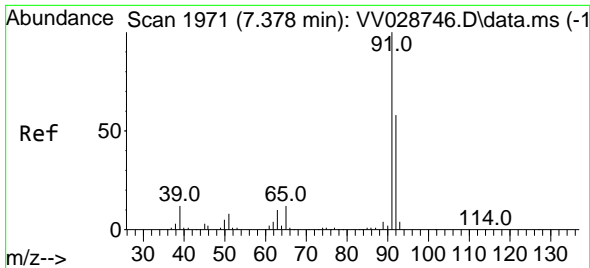
Tgt Ion: 75 Resp: 77011
 Ion Ratio Lower Upper
 75 100
 77 31.6 22.1 41.1



#40
 4-Methyl-2-pentanone
 Concen: 62.023 ug/L
 RT: 7.223 min Scan# 1923
 Delta R.T. 0.003 min
 Lab File: VV028769.D
 Acq: 28 Oct 2022 20:36

Tgt Ion: 43 Resp: 468848
 Ion Ratio Lower Upper
 43 100
 58 34.9 29.6 44.4
 100 10.8 9.4 14.0

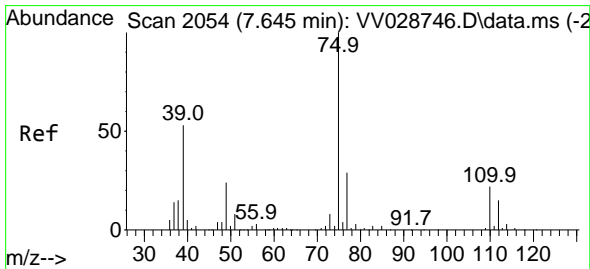
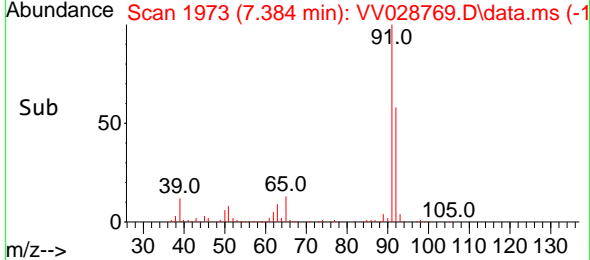
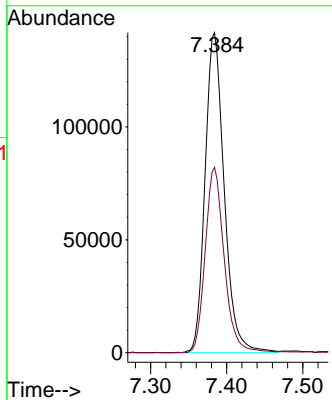
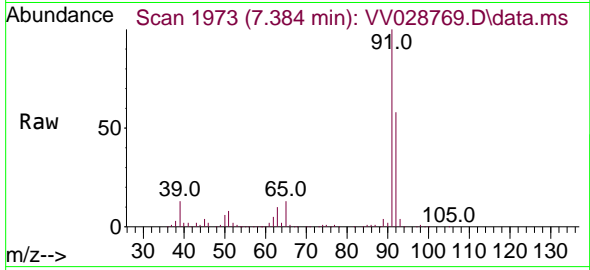




#42
 Toluene
 Concen: 5.236 ug/L
 RT: 7.384 min Scan# 1973
 Delta R.T. 0.006 min
 Lab File: VV028769.D
 Acq: 28 Oct 2022 20:36

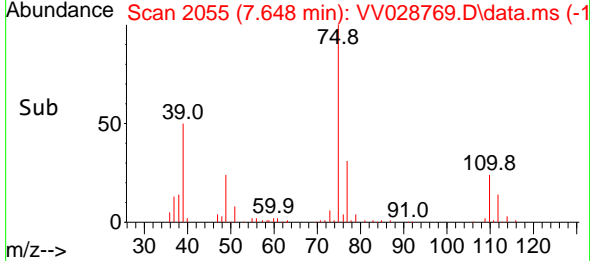
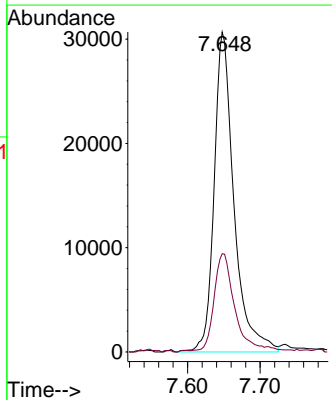
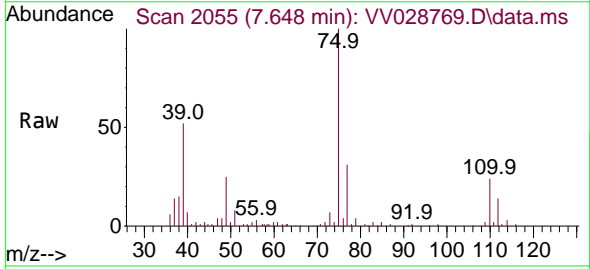
Instrument : MSVOA_V
 ClientSampleId : VSTD005340

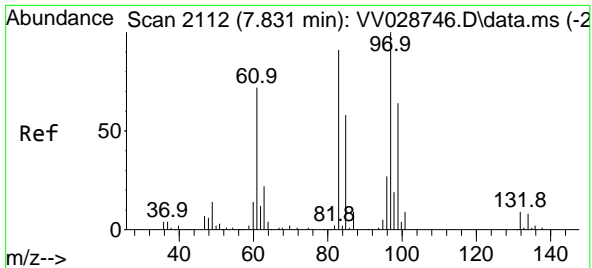
Tgt Ion: 91 Resp: 248086
 Ion Ratio Lower Upper
 91 100
 92 58.0 40.5 75.3



#44
 trans-1,3-Dichloropropene
 Concen: 4.670 ug/L
 RT: 7.648 min Scan# 2055
 Delta R.T. 0.003 min
 Lab File: VV028769.D
 Acq: 28 Oct 2022 20:36

Tgt Ion: 75 Resp: 58257
 Ion Ratio Lower Upper
 75 100
 77 30.7 22.6 42.0



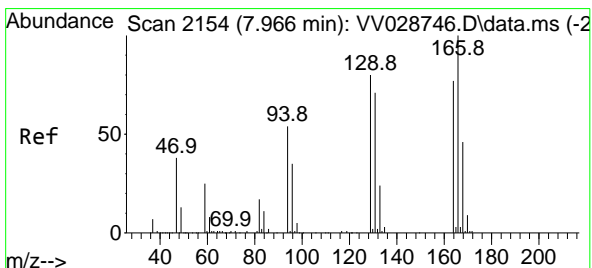
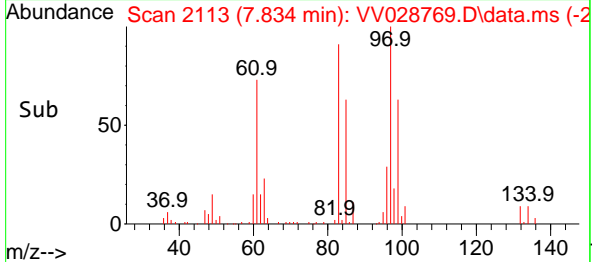
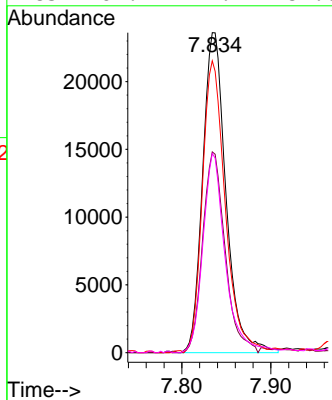
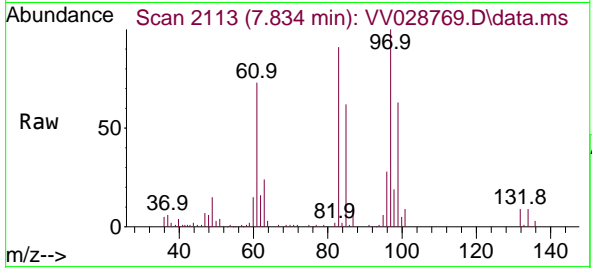


#45
 1,1,2-Trichloroethane
 Concen: 5.478 ug/L
 RT: 7.834 min Scan# 2112
 Delta R.T. 0.003 min
 Lab File: VV028769.D
 Acq: 28 Oct 2022 20:36

Instrument : MSVOA_V
 ClientSampleId : VSTD005340

Tgt Ion: 97 Resp: 42985

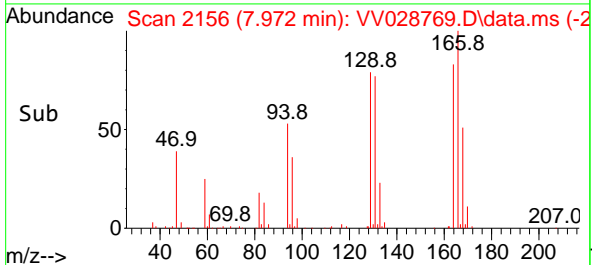
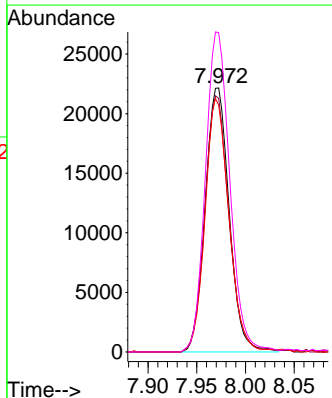
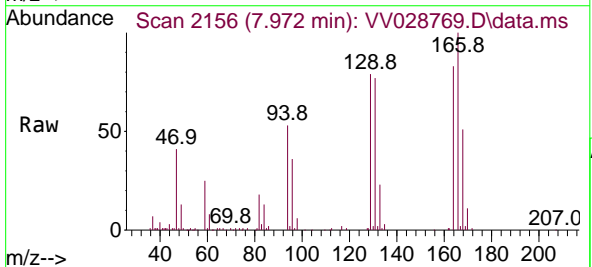
Ion	Ratio	Lower	Upper
97	100		
99	62.8	44.0	81.6
83	91.2	66.2	123.0
85	62.2	44.2	82.0

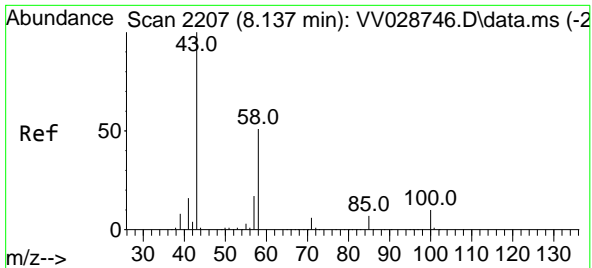


#47
 Tetrachloroethene
 Concen: 5.005 ug/L
 RT: 7.972 min Scan# 2156
 Delta R.T. 0.006 min
 Lab File: VV028769.D
 Acq: 28 Oct 2022 20:36

Tgt Ion: 164 Resp: 38028

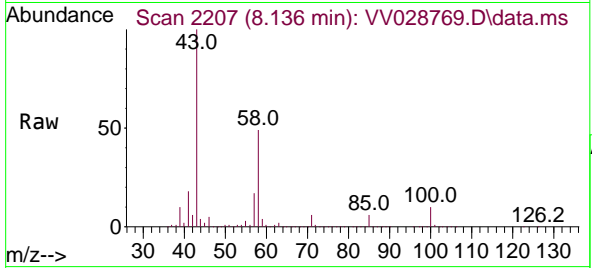
Ion	Ratio	Lower	Upper
164	100		
129	96.1	69.2	128.6
131	93.4	64.2	119.2
166	120.9	87.3	162.1





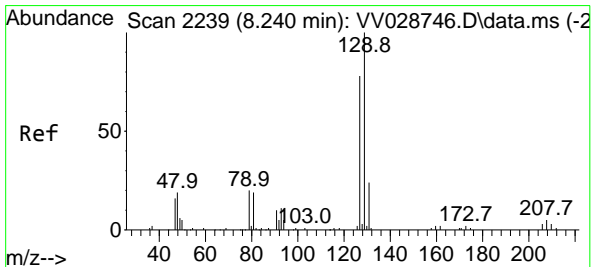
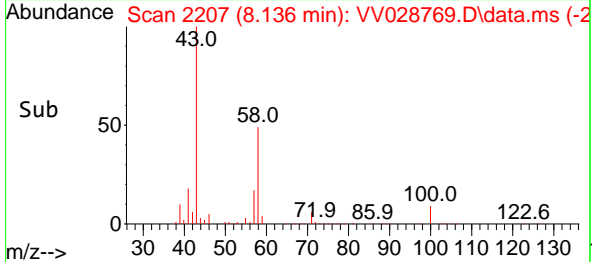
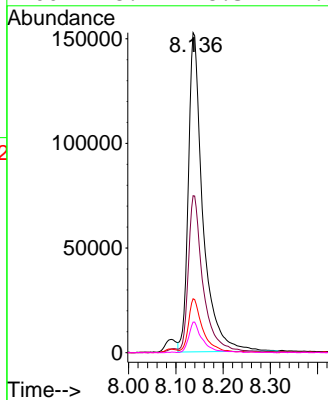
#48
 2-Hexanone
 Concen: 60.944 ug/L
 RT: 8.136 min Scan# 21
 Delta R.T. -0.000 min
 Lab File: VV028769.D
 Acq: 28 Oct 2022 20:36

Instrument :
 MSVOA_V
 ClientSampleId :
 VSTD005340

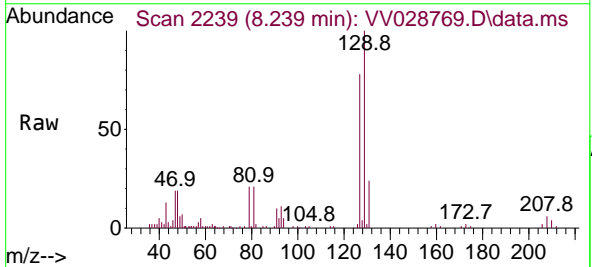


Tgt Ion: 43 Resp: 325969

Ion	Ratio	Lower	Upper
43	100		
58	48.9	40.6	60.8
57	16.0	13.8	20.8
100	8.7	8.3	12.5

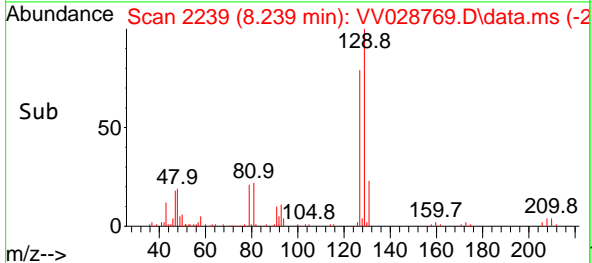
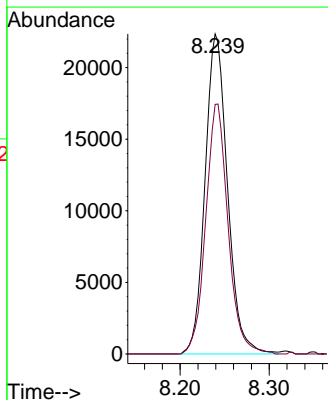


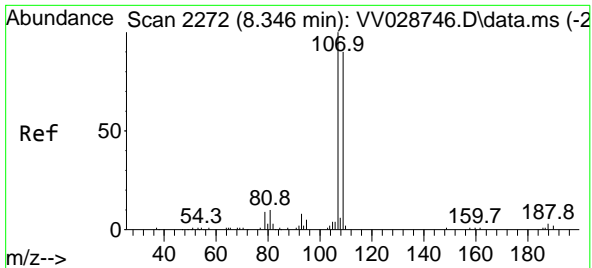
#49
 Dibromochloromethane
 Concen: 4.759 ug/L
 RT: 8.239 min Scan# 2239
 Delta R.T. -0.000 min
 Lab File: VV028769.D
 Acq: 28 Oct 2022 20:36



Tgt Ion: 129 Resp: 39118

Ion	Ratio	Lower	Upper
129	100		
127	78.0	51.6	95.8

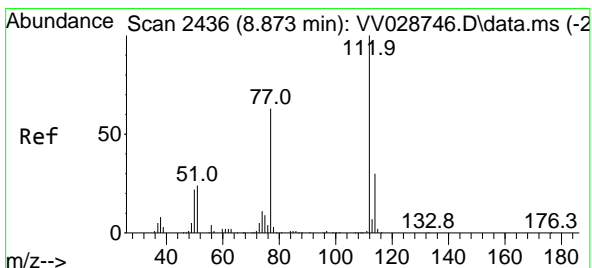
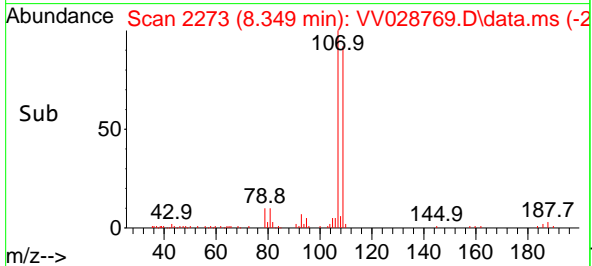
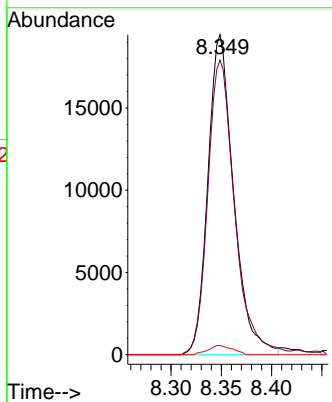
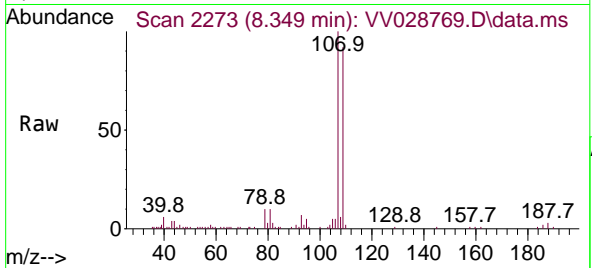




#50
 1,2-Dibromoethane
 Concen: 5.075 ug/L
 RT: 8.349 min Scan# 21
 Delta R.T. 0.003 min
 Lab File: VV028769.D
 Acq: 28 Oct 2022 20:36

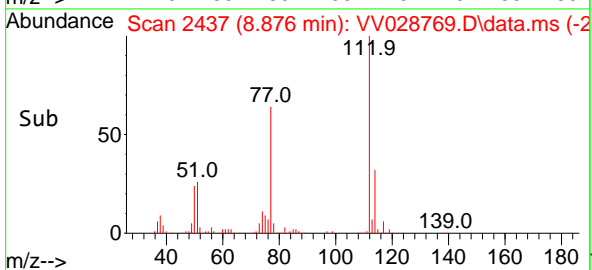
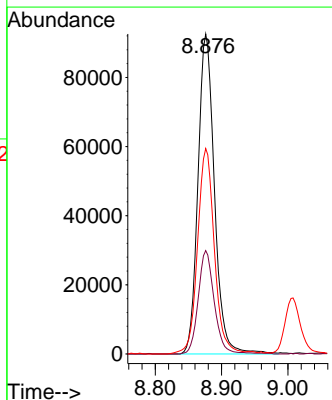
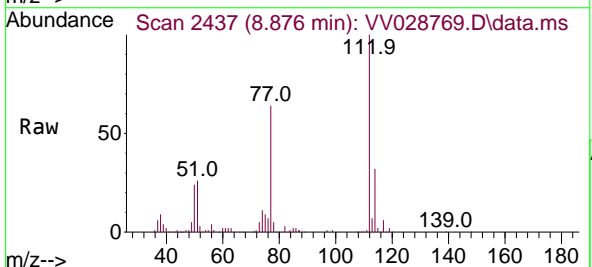
Instrument :
 MSVOA_V
 ClientSampleId :
 VSTD005340

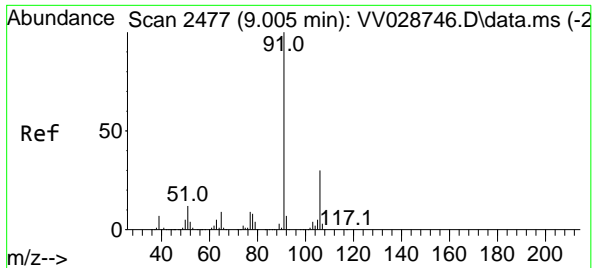
Tgt Ion	Resp	Lower	Upper
107	34667		
107	100		
109	92.1	64.0	118.8
188	2.9	2.9	4.3



#51
 Chlorobenzene
 Concen: 5.362 ug/L
 RT: 8.876 min Scan# 2437
 Delta R.T. 0.003 min
 Lab File: VV028769.D
 Acq: 28 Oct 2022 20:36

Tgt Ion	Resp	Lower	Upper
112	159967		
112	100		
114	32.3	22.0	41.0
77	64.2	50.0	75.0

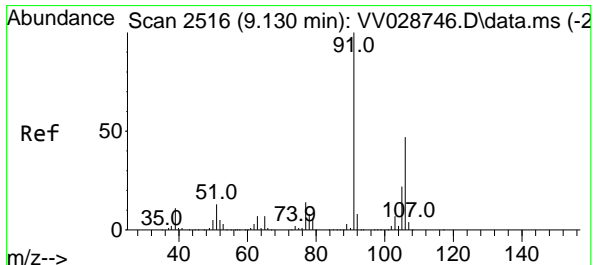
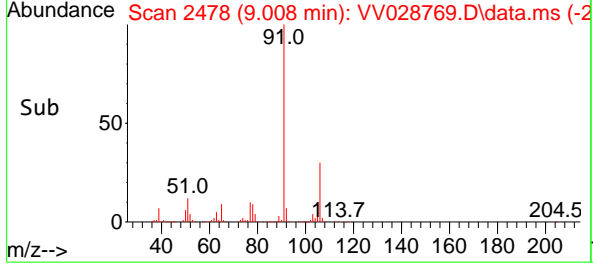
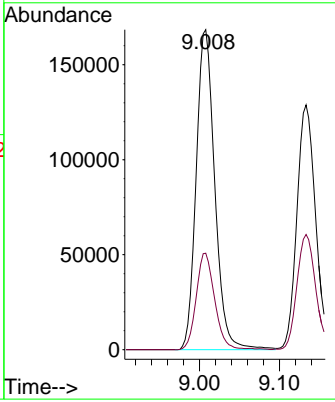
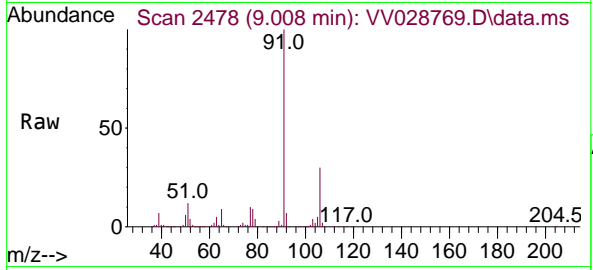




#52
 Ethylbenzene
 Concen: 5.179 ug/L
 RT: 9.008 min Scan# 2477
 Delta R.T. 0.003 min
 Lab File: VV028769.D
 Acq: 28 Oct 2022 20:36

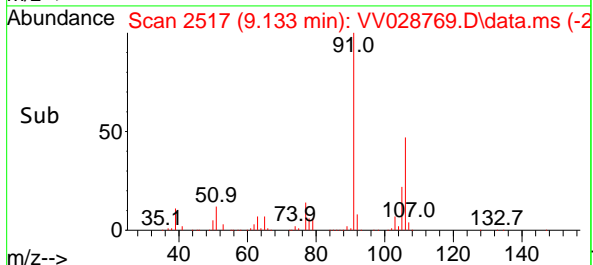
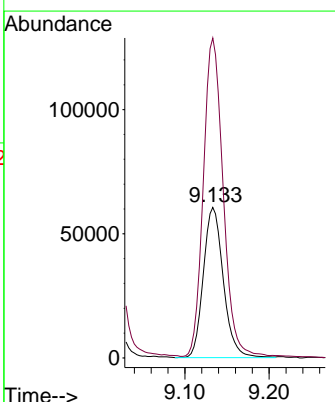
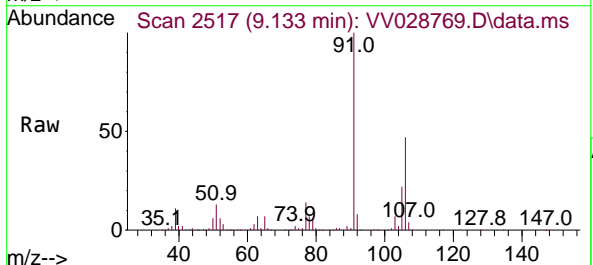
Instrument : MSVOA_V
 ClientSampleId : VSTD005340

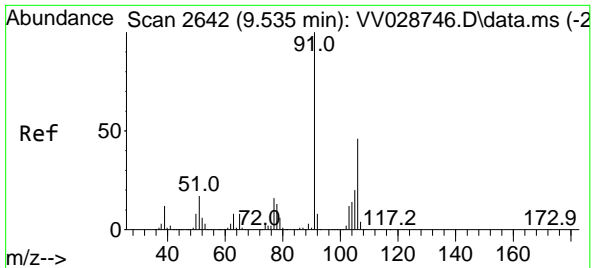
Tgt Ion: 91 Resp: 272714
 Ion Ratio Lower Upper
 91 100
 106 30.1 21.3 39.6



#53
 m,p-Xylene
 Concen: 5.255 ug/L
 RT: 9.133 min Scan# 2517
 Delta R.T. 0.003 min
 Lab File: VV028769.D
 Acq: 28 Oct 2022 20:36

Tgt Ion:106 Resp: 99909
 Ion Ratio Lower Upper
 106 100
 91 212.5 145.5 270.1

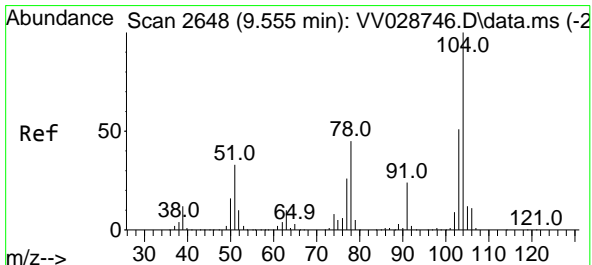
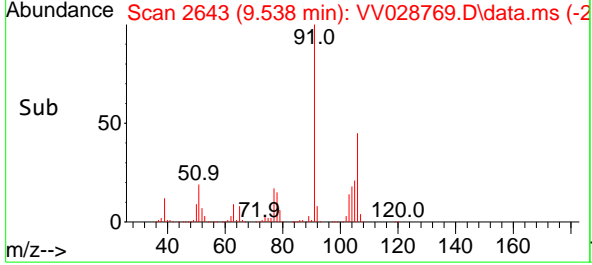
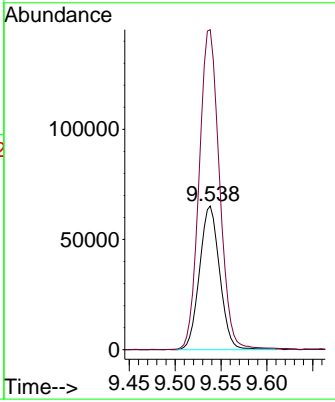
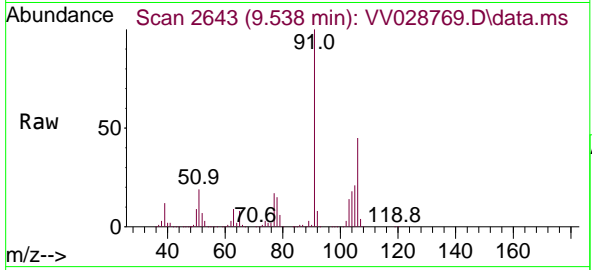




#54
 o-Xylene
 Concen: 5.210 ug/L
 RT: 9.538 min Scan# 2643
 Delta R.T. 0.003 min
 Lab File: VV028769.D
 Acq: 28 Oct 2022 20:36

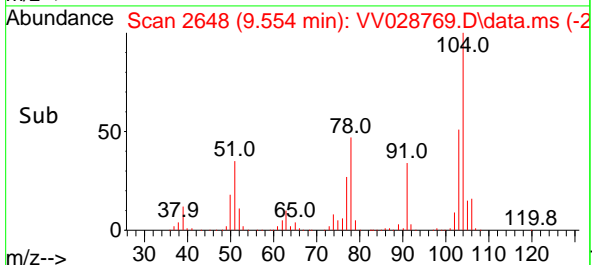
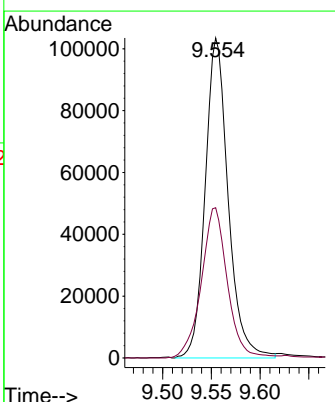
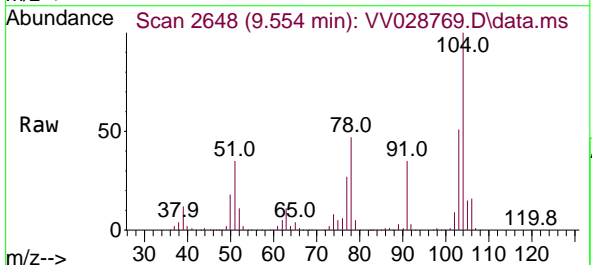
Instrument : MSVOA_V
 ClientSampleId : VSTD005340

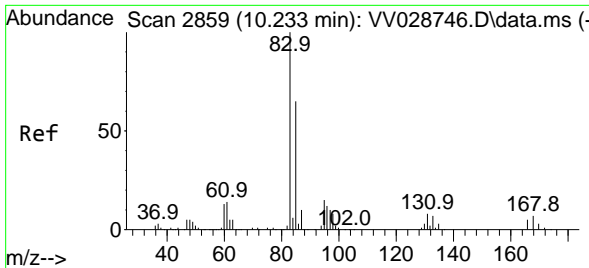
Tgt Ion:106 Resp: 99642
 Ion Ratio Lower Upper
 106 100
 91 222.6 159.0 295.4



#55
 Styrene
 Concen: 5.264 ug/L
 RT: 9.554 min Scan# 2648
 Delta R.T. -0.000 min
 Lab File: VV028769.D
 Acq: 28 Oct 2022 20:36

Tgt Ion:104 Resp: 169768
 Ion Ratio Lower Upper
 104 100
 78 47.0 32.8 61.0



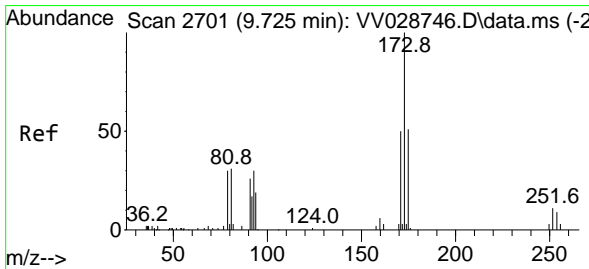
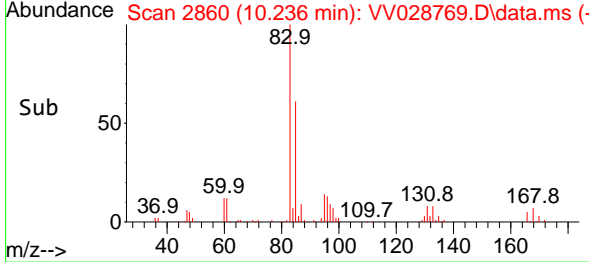
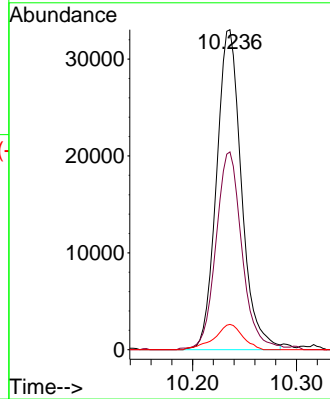
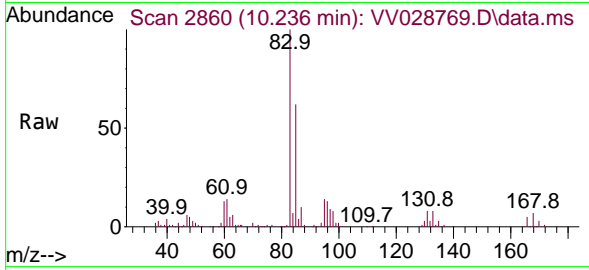


#57
 1,1,2,2-Tetrachloroethane
 Concen: 5.604 ug/L
 RT: 10.236 min Scan# 2859
 Delta R.T. 0.003 min
 Lab File: VV028769.D
 Acq: 28 Oct 2022 20:36

Instrument : MSVOA_V
 ClientSampleId : VSTD005340

Tgt Ion: 83 Resp: 55158

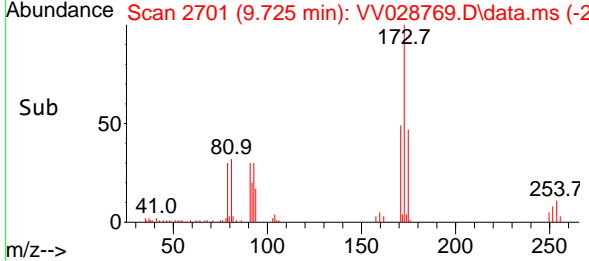
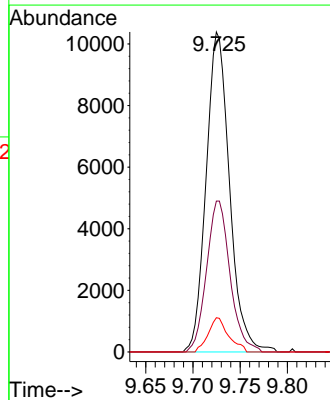
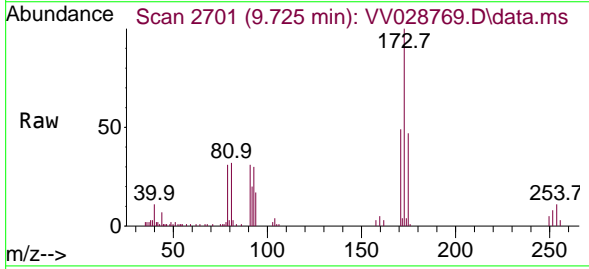
Ion	Ratio	Lower	Upper
83	100		
85	61.8	43.0	80.0
131	7.9	6.5	9.7

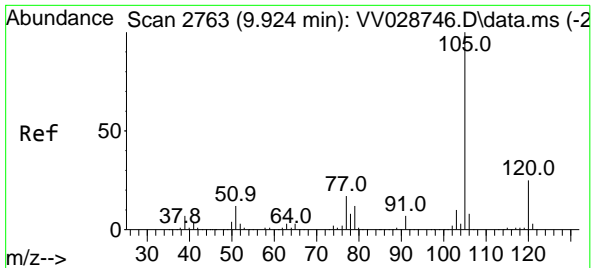


#59
 Bromoform
 Concen: 4.356 ug/L
 RT: 9.725 min Scan# 2701
 Delta R.T. -0.000 min
 Lab File: VV028769.D
 Acq: 28 Oct 2022 20:36

Tgt Ion: 173 Resp: 17892

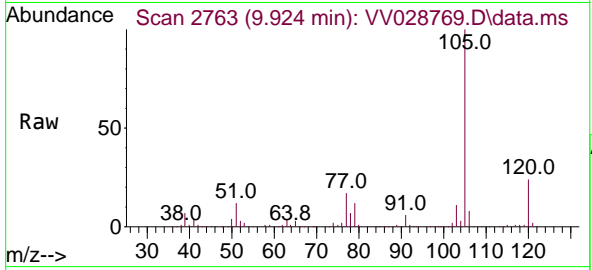
Ion	Ratio	Lower	Upper
173	100		
175	47.4	39.8	59.8
254	9.2	7.3	10.9



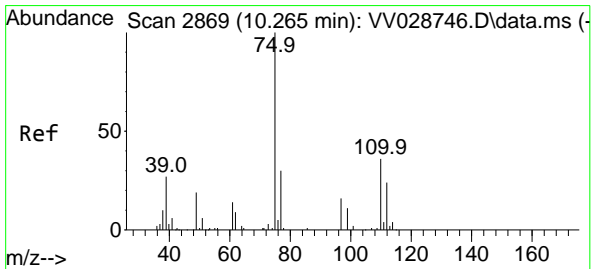
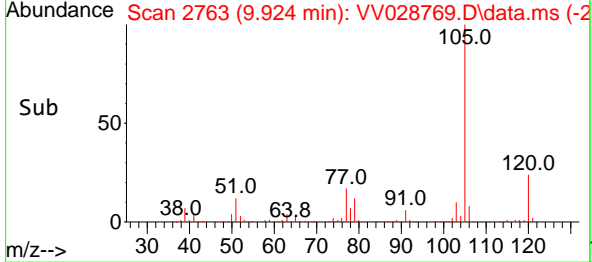
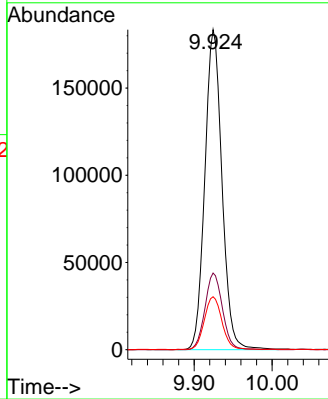


#60
 Isopropylbenzene
 Concen: 5.315 ug/L
 RT: 9.924 min Scan# 21
 Delta R.T. -0.000 min
 Lab File: VV028769.D
 Acq: 28 Oct 2022 20:36

Instrument :
 MSVOA_V
 ClientSampleId :
 VSTD005340

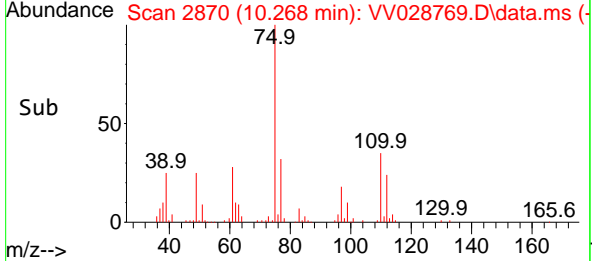
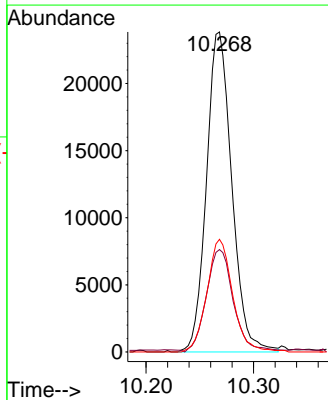
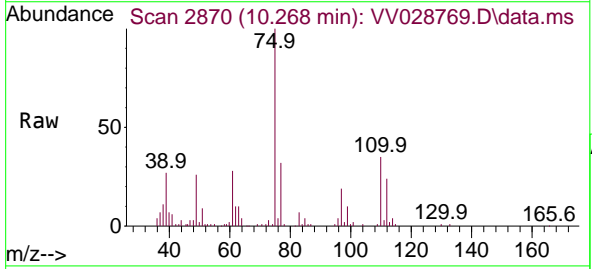


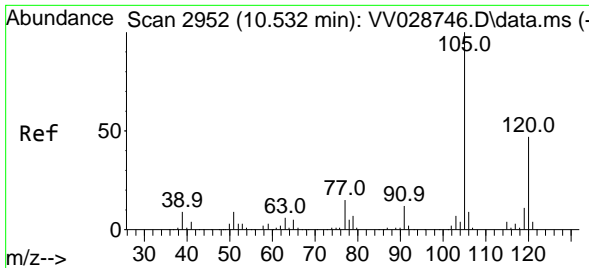
Tgt Ion:105 Resp: 279818
 Ion Ratio Lower Upper
 105 100
 120 24.4 20.1 30.1
 77 16.9 13.4 20.0



#61
 1,2,3-Trichloropropane
 Concen: 5.429 ug/L
 RT: 10.268 min Scan# 2870
 Delta R.T. 0.003 min
 Lab File: VV028769.D
 Acq: 28 Oct 2022 20:36

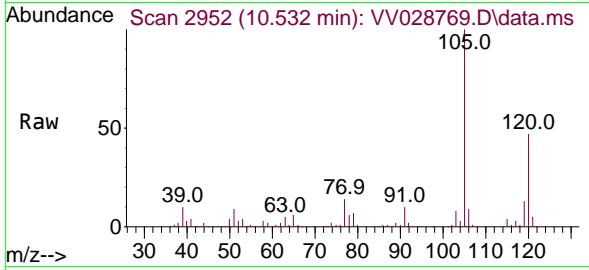
Tgt Ion: 75 Resp: 38999
 Ion Ratio Lower Upper
 75 100
 77 34.3 25.2 37.8
 110 35.8 27.9 41.9



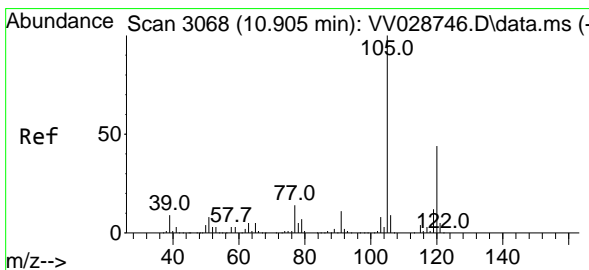
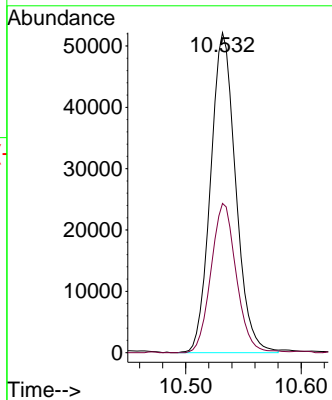
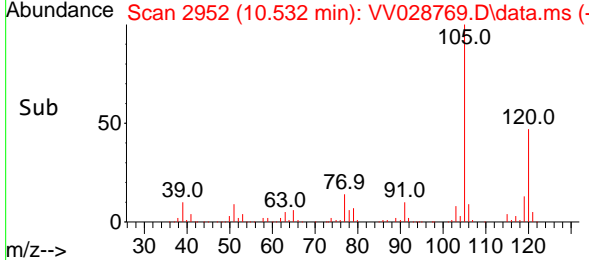


#62
 1,3,5-Trimethylbenzene
 Concen: 5.128 ug/L
 RT: 10.532 min Scan# 2952
 Delta R.T. -0.000 min
 Lab File: VV028769.D
 Acq: 28 Oct 2022 20:36

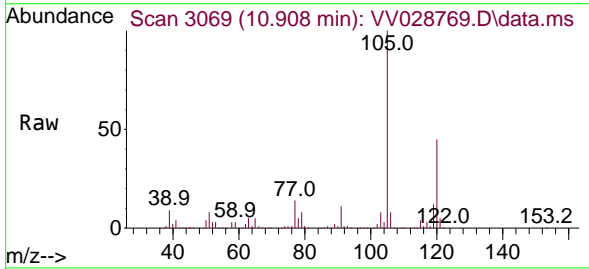
Instrument : MSVOA_V
 ClientSampleId : VSTD005340



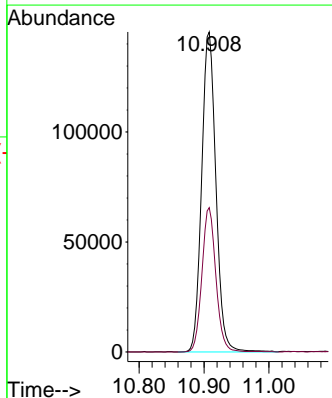
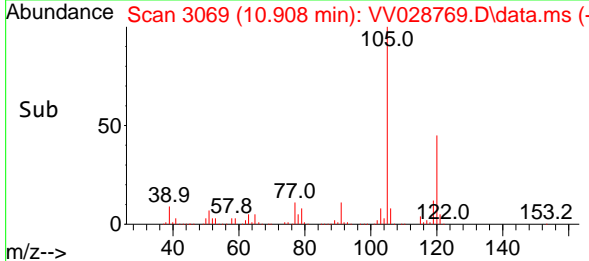
Tgt Ion:105 Resp: 78755
 Ion Ratio Lower Upper
 105 100
 120 47.0 38.3 57.5

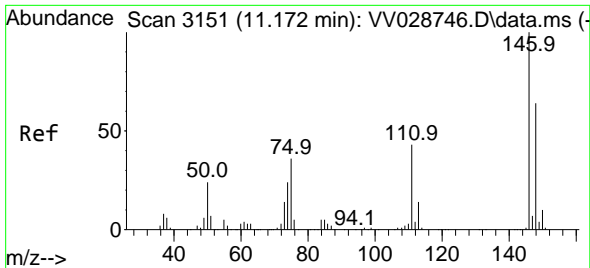


#63
 1,2,4-Trimethylbenzene
 Concen: 5.232 ug/L
 RT: 10.908 min Scan# 3069
 Delta R.T. 0.003 min
 Lab File: VV028769.D
 Acq: 28 Oct 2022 20:36



Tgt Ion:105 Resp: 222519
 Ion Ratio Lower Upper
 105 100
 120 44.1 36.2 54.2

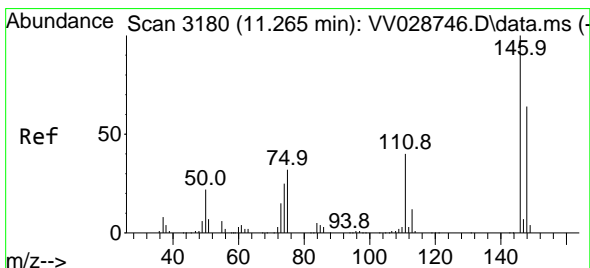
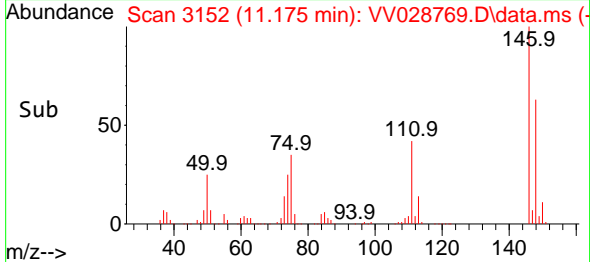
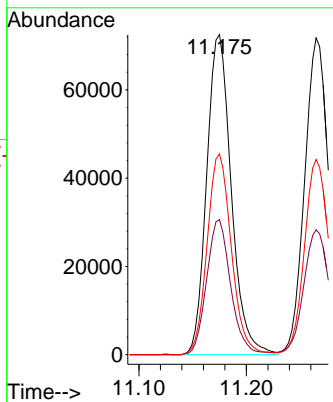
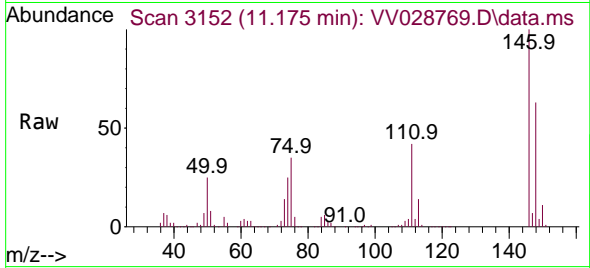




#64
 1,3-Dichlorobenzene
 Concen: 5.091 ug/L
 RT: 11.175 min Scan# 3152
 Delta R.T. 0.003 min
 Lab File: VV028769.D
 Acq: 28 Oct 2022 20:36

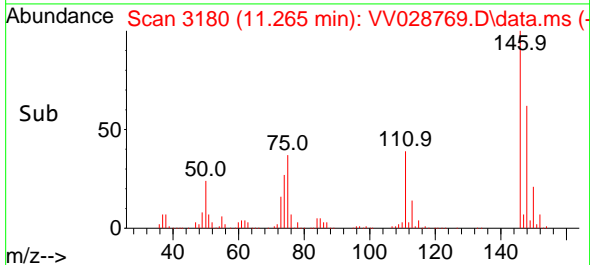
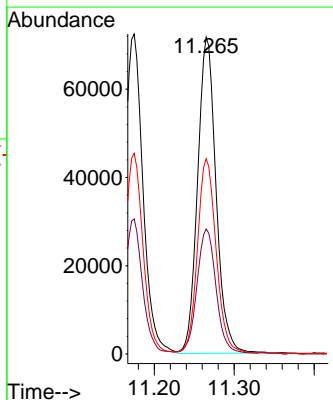
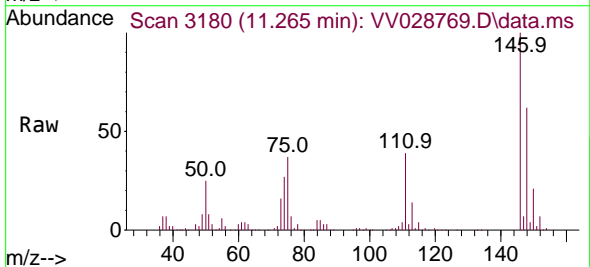
Instrument :
 MSVOA_V
 ClientSampleId :
 VSTD005340

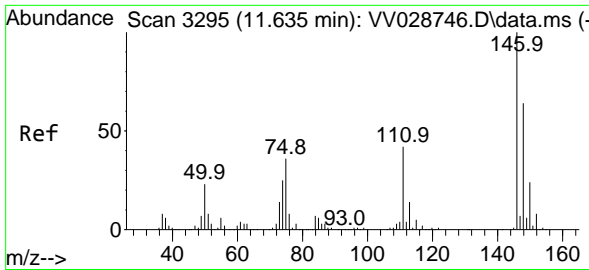
Tgt Ion:146 Resp: 115438
 Ion Ratio Lower Upper
 146 100
 111 42.2 29.0 53.9
 148 62.8 44.5 82.7



#65
 1,4-Dichlorobenzene
 Concen: 5.099 ug/L
 RT: 11.265 min Scan# 3180
 Delta R.T. -0.000 min
 Lab File: VV028769.D
 Acq: 28 Oct 2022 20:36

Tgt Ion:146 Resp: 115368
 Ion Ratio Lower Upper
 146 100
 111 39.4 28.6 53.2
 148 61.6 44.3 82.3

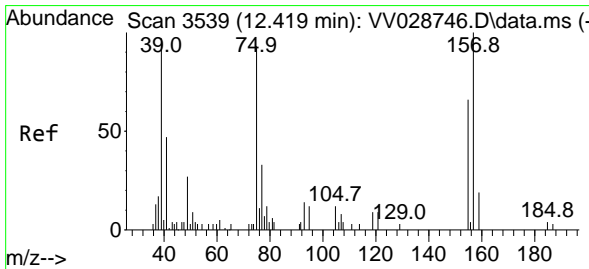
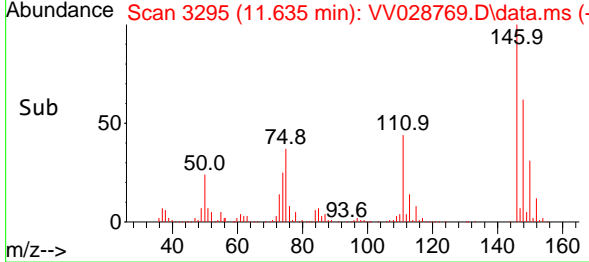
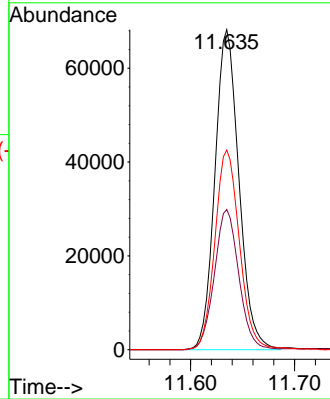
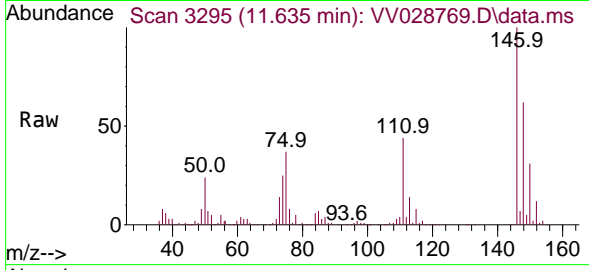




#67
 1,2-Dichlorobenzene
 Concen: 5.282 ug/L
 RT: 11.635 min Scan# 31
 Delta R.T. -0.000 min
 Lab File: VV028769.D
 Acq: 28 Oct 2022 20:36

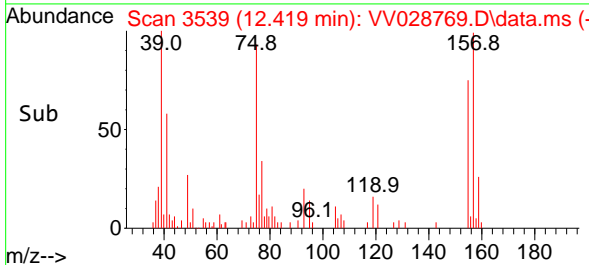
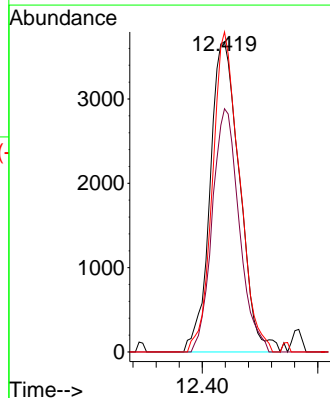
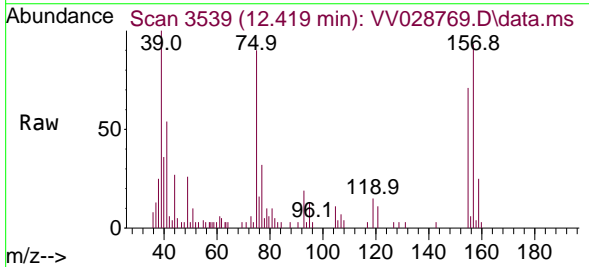
Instrument :
 MSVOA_V
 ClientSampleId :
 VSTD005340

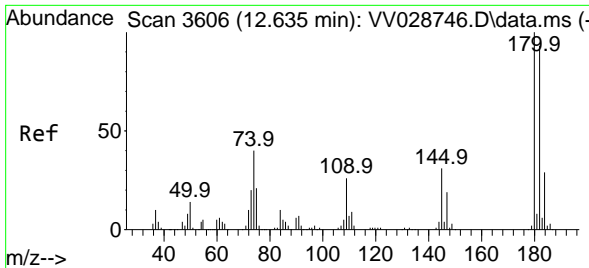
Tgt Ion	Resp	Lower	Upper
146	109526		
146	100		
111	43.8	36.2	54.4
148	62.4	50.6	75.8



#68
 1,2-Dibromo-3-chloropropane
 Concen: 4.417 ug/L
 RT: 12.419 min Scan# 3539
 Delta R.T. -0.000 min
 Lab File: VV028769.D
 Acq: 28 Oct 2022 20:36

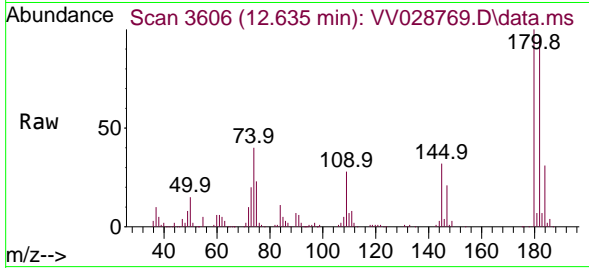
Tgt Ion	Resp	Lower	Upper
75	6532		
75	100		
155	78.4	58.2	87.2
157	103.1	71.5	107.3



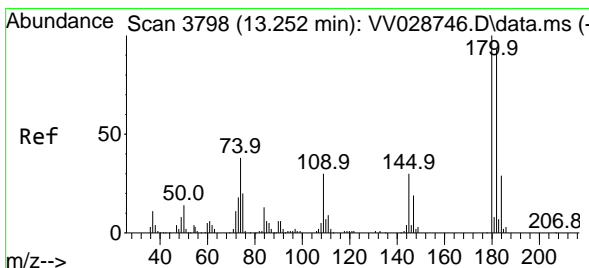
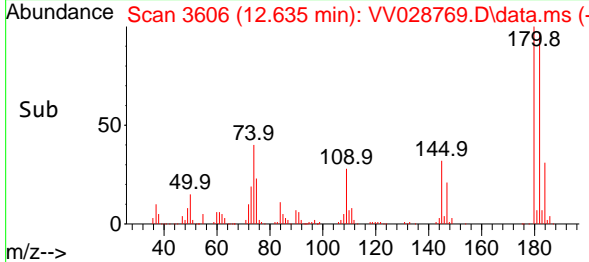
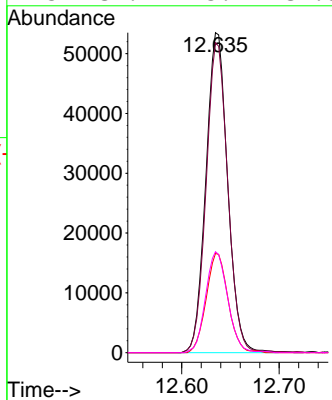


#69
 1,3,5-Trichlorobenzene
 Concen: 4.823 ug/L
 RT: 12.635 min Scan# 30
 Delta R.T. -0.000 min
 Lab File: VV028769.D
 Acq: 28 Oct 2022 20:36

Instrument :
 MSVOA_V
 ClientSampleId :
 VSTD005340

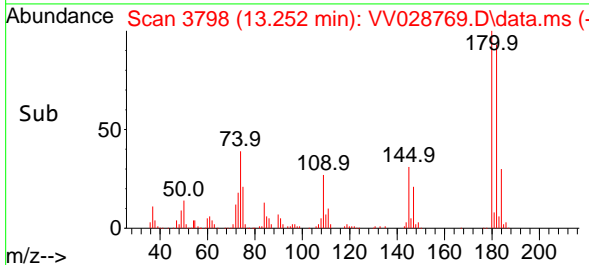
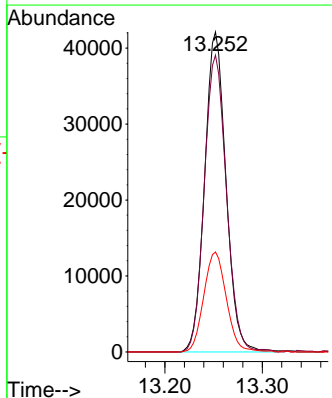
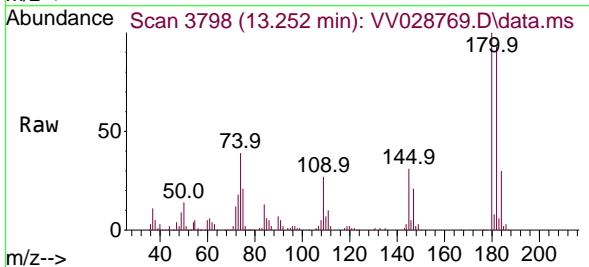


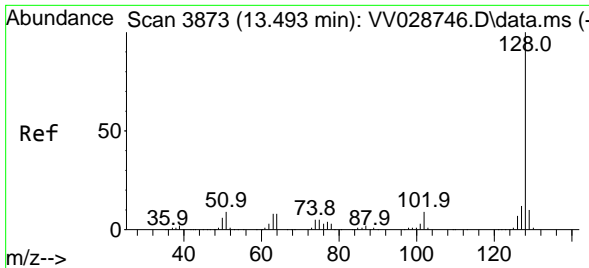
Tgt Ion:180 Resp: 83047
 Ion Ratio Lower Upper
 180 100
 182 96.1 76.6 114.8
 184 31.2 24.3 36.5
 145 31.9 25.2 37.8



#70
 1,2,4-trichlorobenzene
 Concen: 4.892 ug/L
 RT: 13.252 min Scan# 3798
 Delta R.T. -0.000 min
 Lab File: VV028769.D
 Acq: 28 Oct 2022 20:36

Tgt Ion:180 Resp: 64130
 Ion Ratio Lower Upper
 180 100
 182 96.0 74.7 112.1
 145 33.1 25.5 38.3



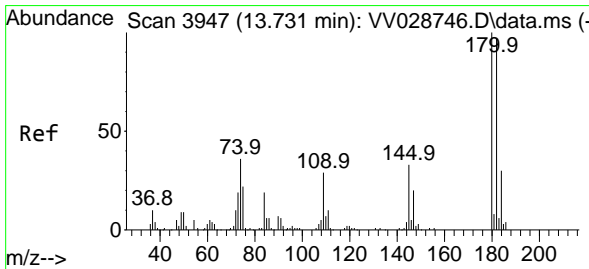
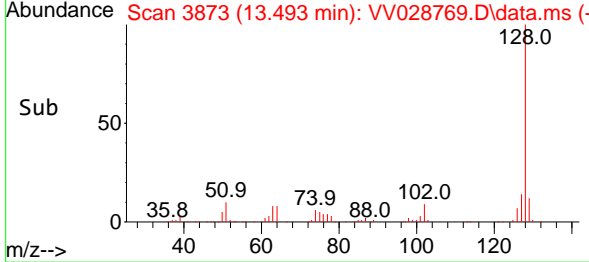
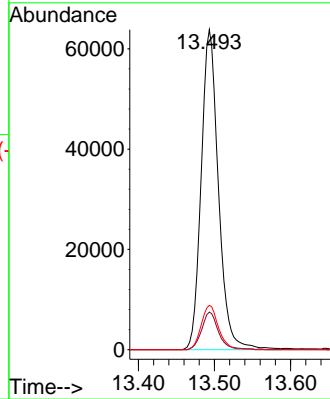
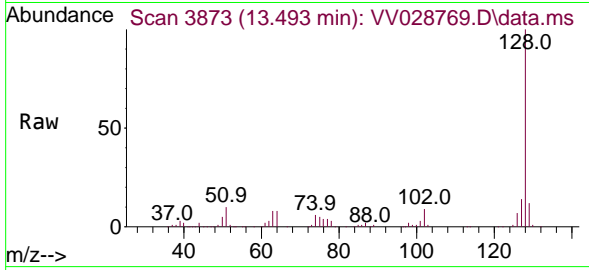


#71
 Naphthalene
 Concen: 4.474 ug/L
 RT: 13.493 min Scan# 31
 Delta R.T. -0.000 min
 Lab File: VV028769.D
 Acq: 28 Oct 2022 20:36

Instrument :
 MSVOA_V
 ClientSampleId :
 VSTD005340

Tgt Ion:128 Resp: 100510

Ion	Ratio	Lower	Upper
128	100		
129	11.5	8.9	13.3
127	13.9	10.2	15.4



#72
 1,2,3-Trichlorobenzene
 Concen: 5.151 ug/L
 RT: 13.734 min Scan# 3948
 Delta R.T. 0.003 min
 Lab File: VV028769.D
 Acq: 28 Oct 2022 20:36

Tgt Ion:180 Resp: 59851

Ion	Ratio	Lower	Upper
180	100		
182	92.4	73.4	110.0
145	31.5	26.3	39.5

