

Data Path : Z:\VOASRV\HPCHEM1\MSVOA\_V\DATA\VV102918\  
 Data File : VV008448.D  
 Acq On : 29 Oct 2018 13:09  
 Operator : SY/MD  
 Sample : J5668-21  
 Misc : 5.0 mL/MSVOA\_V/WATER  
 ALS Vial : 5 Sample Multiplier: 1

Instrument :  
 MSVOA\_V  
 ClientSampleId :  
 VHBLK01

## Integration Parameters: LSCINT.P

Integrator: RTE  
 Smoothing : OFF  
 Sampling : 1  
 Start Thrs: 0.2  
 Stop Thrs : 0

Filtering: 5  
 Min Area: 0 % of largest Peak  
 Max Peaks: 100  
 Peak Location: TOP

If leading or trailing edge < 100 prefer < Baseline drop else tangent >  
 Peak separation: 5

Method : Z:\VOASRV\HPCHEM1\MSVOA\_V\METHOD\SOMVLM102318WMA.M  
 Title : VOC Analysis

Signal : TIC

peak #	R.T. min	first scan	max scan	last scan	PK TY	peak height	corr. area	corr. % max.	% of total
1	1.322	66	72	86	rVB	73117	76208	10.54%	1.390%
2	1.560	142	146	159	rVB	54079	65676	9.08%	1.198%
3	2.126	314	322	335	rVB	120680	168789	23.34%	3.078%
4	2.778	521	525	527	rBV2	342	232	0.03%	0.004%
5	2.839	536	544	552	rVB4	547	976	0.13%	0.018%
6	2.872	552	554	557	rBV	231	147	0.02%	0.003%
7	2.904	562	564	569	rVB2	329	183	0.03%	0.003%
8	2.936	573	574	577	rBV2	316	171	0.02%	0.003%
9	2.978	582	587	590	rBV2	300	272	0.04%	0.005%
10	3.097	618	624	627	rBV2	255	254	0.04%	0.005%
11	3.155	640	642	647	rVB2	382	294	0.04%	0.005%
12	3.206	655	658	661	rBV2	265	164	0.02%	0.003%
13	3.286	680	683	685	rBV	194	145	0.02%	0.003%
14	3.328	693	696	702	rVB	129	117	0.02%	0.002%
15	3.553	762	766	770	rBV2	271	240	0.03%	0.004%
16	3.579	770	774	775	rBV	261	164	0.02%	0.003%
17	3.621	784	787	791	rBV	332	266	0.04%	0.005%
18	3.743	819	825	830	rBV2	308	316	0.04%	0.006%
19	3.769	830	833	836	rVV2	206	141	0.02%	0.003%
20	3.827	849	851	854	rVB	200	129	0.02%	0.002%
21	3.852	855	859	862	rBV	350	269	0.04%	0.005%
22	3.868	862	864	869	rVB	250	139	0.02%	0.003%
23	3.929	869	883	912	rBV	65558	174698	24.16%	3.185%
24	4.190	962	964	970	rVB2	201	140	0.02%	0.003%
25	4.264	984	987	991	rBV	420	343	0.05%	0.006%
26	4.286	991	994	998	rVB3	371	310	0.04%	0.006%
27	4.306	998	1000	1002	rVB	310	145	0.02%	0.003%
28	4.318	1002	1004	1007	rVB	265	131	0.02%	0.002%
29	4.402	1007	1030	1054	rBV	118296	280121	38.73%	5.108%
30	4.582	1083	1086	1088	rBV	299	174	0.02%	0.003%
31	4.791	1145	1151	1154	rVB2	287	268	0.04%	0.005%
32	4.833	1160	1164	1167	rBV2	346	272	0.04%	0.005%
33	4.862	1170	1173	1176	rVB2	178	147	0.02%	0.003%
34	4.923	1189	1192	1195	rBV	234	146	0.02%	0.003%

Data Path : Z:\VOASRV\HPCHEM1\MSVOA\_V\DATA\VV102918\  
 Data File : VV008448.D  
 Acq On : 29 Oct 2018 13:09  
 Operator : SY/MD  
 Sample : J5668-21  
 Misc : 5.0 mL/MSVOA\_V/WATER  
 ALS Vial : 5 Sample Multiplier: 1

Instrument :  
 MSVOA\_V  
 ClientSampleId :  
 VHBLK01

## Integration Parameters: LSCINT.P

Integrator: RTE  
 Smoothing : OFF  
 Sampling : 1  
 Start Thrs: 0.2  
 Stop Thrs : 0

Filtering: 5  
 Min Area: 0 % of largest Peak  
 Max Peaks: 100  
 Peak Location: TOP

If leading or trailing edge < 100 prefer < Baseline drop else tangent >  
 Peak separation: 5

Method : Z:\VOASRV\HPCHEM1\MSVOA\_V\METHOD\SOMVLM102318WMA.M  
 Title : VOC Analysis

35	4.945	1195	1199	1202	rBV3	235	210	0.03%	0.004%
36	5.097	1225	1246	1271	rBV2	286881	723194	100.00%	13.187%
37	5.302	1308	1310	1312	rBV2	250	163	0.02%	0.003%
38	5.376	1329	1333	1334	rBV3	301	180	0.02%	0.003%
39	5.437	1348	1352	1354	rBV3	340	286	0.04%	0.005%
40	5.482	1362	1366	1369	rBV	189	136	0.02%	0.002%
41	5.511	1369	1375	1382	rBV2	309	273	0.04%	0.005%
42	5.550	1383	1387	1390	rBV2	305	265	0.04%	0.005%
43	5.666	1408	1423	1453	rBV	234516	461736	63.85%	8.419%
44	5.881	1484	1490	1493	rBV3	265	355	0.05%	0.006%
45	5.920	1498	1502	1505	rVB2	249	168	0.02%	0.003%
46	5.942	1505	1509	1510	rBV2	916	704	0.10%	0.013%
47	6.007	1525	1529	1530	rBV2	260	168	0.02%	0.003%
48	6.068	1545	1548	1549	rBV	253	141	0.02%	0.003%
49	6.119	1550	1564	1581	rVV	167986	334567	46.26%	6.101%
50	6.248	1597	1604	1607	rBV4	597	807	0.11%	0.015%
51	6.293	1616	1618	1621	rBV2	171	142	0.02%	0.003%
52	6.399	1648	1651	1653	rBV2	163	119	0.02%	0.002%
53	6.473	1672	1674	1678	rVB2	184	131	0.02%	0.002%
54	6.527	1688	1691	1694	rBV	196	125	0.02%	0.002%
55	6.572	1701	1705	1707	rBV	171	126	0.02%	0.002%
56	6.637	1720	1725	1727	rBV	897	802	0.11%	0.015%
57	6.695	1732	1743	1761	rVV	16150	32856	4.54%	0.599%
58	6.842	1787	1789	1792	rBV2	228	116	0.02%	0.002%
59	6.933	1813	1817	1822	rBV2	167	245	0.03%	0.004%
60	7.029	1835	1847	1868	rBV	101993	180359	24.94%	3.289%
61	7.257	1915	1918	1919	rBV	279	152	0.02%	0.003%
62	7.283	1922	1926	1929	rBV3	563	526	0.07%	0.010%
63	7.360	1937	1950	1968	rBV	330631	565534	78.20%	10.312%
64	7.566	2011	2014	2017	rBV2	245	187	0.03%	0.003%
65	7.598	2021	2024	2030	rVB2	236	275	0.04%	0.005%
66	7.666	2033	2045	2064	rBV	72834	122721	16.97%	2.238%
67	8.135	2183	2191	2211	rVB	228570	388145	53.67%	7.078%
68	8.305	2242	2244	2248	rBV2	348	215	0.03%	0.004%
69	8.354	2257	2259	2265	rBV2	240	219	0.03%	0.004%
70	8.415	2276	2278	2282	rBV	153	114	0.02%	0.002%
71	8.450	2286	2289	2292	rBV	196	139	0.02%	0.003%

Data Path : Z:\VOASRV\HPCHEM1\MSVOA\_V\DATA\VV102918\  
 Data File : VV008448.D  
 Acq On : 29 Oct 2018 13:09  
 Operator : SY/MD  
 Sample : J5668-21  
 Misc : 5.0 mL/MSVOA\_V/WATER  
 ALS Vial : 5 Sample Multiplier: 1

Instrument :  
 MSVOA\_V  
 ClientSampleId :  
 VHBLK01

## Integration Parameters: LSCINT.P

Integrator: RTE  
 Smoothing : OFF  
 Sampling : 1  
 Start Thrs: 0.2  
 Stop Thrs : 0

Filtering: 5  
 Min Area: 0 % of largest Peak  
 Max Peaks: 100  
 Peak Location: TOP

If leading or trailing edge < 100 prefer < Baseline drop else tangent >  
 Peak separation: 5

Method : Z:\VOASRV\HPCHEM1\MSVOA\_V\METHOD\SOMVLM102318WMA.M  
 Title : VOC Analysis

72	8.511	2307	2308	2312	rBV2	221	126	0.02%	0.002%
73	8.563	2322	2324	2328	rVB	219	189	0.03%	0.003%
74	8.598	2328	2335	2336	rBV	206	194	0.03%	0.004%
75	8.813	2400	2402	2404	rBV	253	141	0.02%	0.003%
76	8.897	2413	2428	2455	rBV	343318	546803	75.61%	9.971%
77	9.177	2513	2515	2517	rBV	182	127	0.02%	0.002%
78	9.270	2539	2544	2549	rBV2	213	306	0.04%	0.006%
79	9.376	2569	2577	2580	rBV2	177	315	0.04%	0.006%
80	9.485	2608	2611	2614	rBV2	320	236	0.03%	0.004%
81	9.592	2640	2644	2646	rBV2	365	249	0.03%	0.005%
82	9.653	2661	2663	2669	rVB2	190	146	0.02%	0.003%
83	9.781	2702	2703	2706	rBV	218	116	0.02%	0.002%
84	9.842	2719	2722	2724	rBV2	242	153	0.02%	0.003%
85	10.071	2790	2793	2798	rVB2	186	182	0.03%	0.003%
86	10.264	2840	2853	2874	rBV	229750	364571	50.41%	6.648%
87	10.440	2894	2908	2920	rBV4	5487	12890	1.78%	0.235%
88	10.598	2953	2957	2959	rBV2	198	170	0.02%	0.003%
89	10.701	2984	2989	2994	rBV2	226	297	0.04%	0.005%
90	10.759	3004	3007	3009	rBV2	233	149	0.02%	0.003%
91	10.868	3037	3041	3047	rVB2	294	348	0.05%	0.006%
92	10.945	3062	3065	3067	rBV	259	170	0.02%	0.003%
93	10.964	3068	3071	3075	rVB2	217	174	0.02%	0.003%
94	10.987	3075	3078	3079	rBV2	175	126	0.02%	0.002%
95	11.090	3106	3110	3114	rBV	257	242	0.03%	0.004%
96	11.231	3150	3154	3159	rBV3	512	389	0.05%	0.007%
97	11.299	3163	3175	3196	rVB	299048	484598	67.01%	8.836%
98	11.675	3280	3292	3308	rBV	296128	481601	66.59%	8.782%
99	11.849	3342	3346	3347	rBV	214	150	0.02%	0.003%
100	13.009	3703	3707	3710	rBV	289	235	0.03%	0.004%

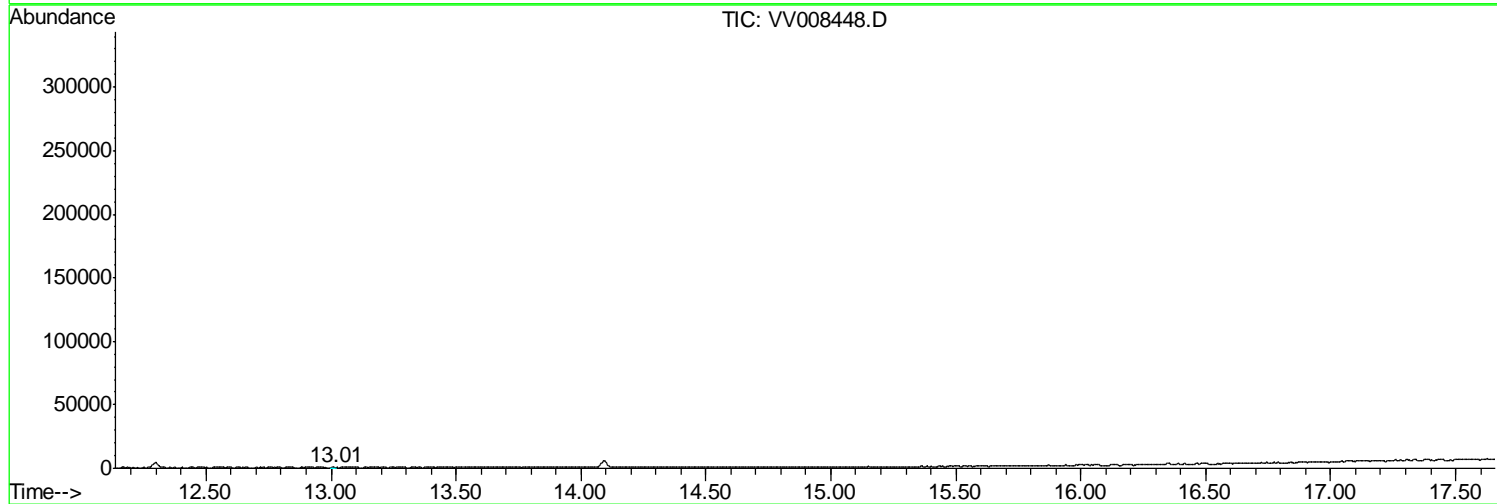
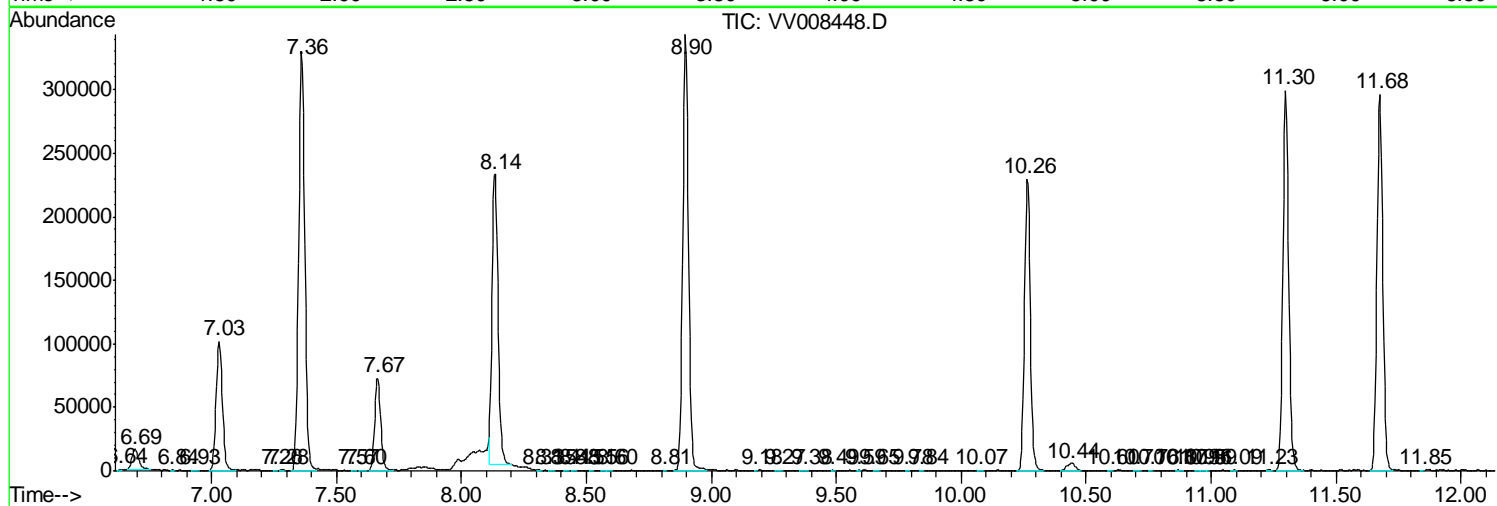
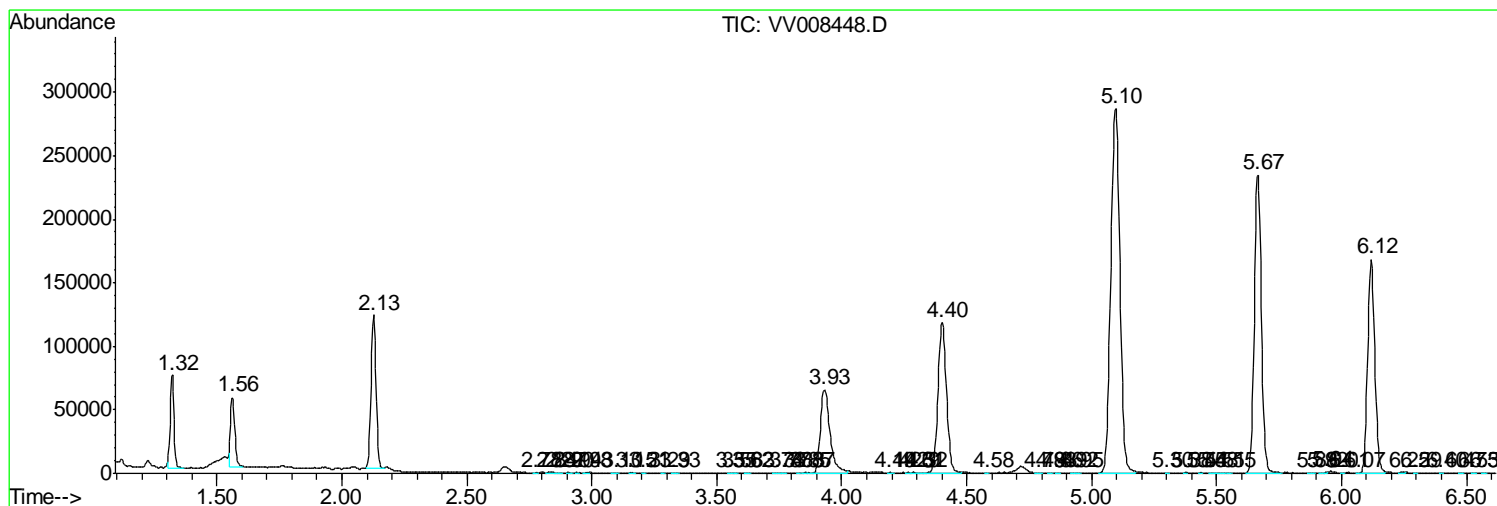
Sum of corrected areas: 5484181

Data Path : Z:\VOASRV\HPCHEM1\MSVOA\_V\DATA\VV102918\  
 Data File : VV008448.D  
 Acq On : 29 Oct 2018 13:09  
 Operator : SY/MD  
 Sample : J5668-21  
 Misc : 5.0 mL/MSVOA\_V/WATER  
 ALS Vial : 5 Sample Multiplier: 1

**Instrument :**  
 MSVOA\_V  
**ClientSampled :**  
 VHBLK01

Quant Method : Z:\VOASRV\HPCHEM1\MSVOA\_V\METHOD\SOMVLM102318WMA.M  
 Quant Title : VOC Analysis

TIC Library : C:\DATABASE\NIST11.L  
 TIC Integration Parameters: LSCINT.P



Data Path : Z:\VOASRV\HPCHEM1\MSVOA\_V\DATA\VV102918\  
Data File : VV008448.D  
Acq On : 29 Oct 2018 13:09  
Operator : SY/MD  
Sample : J5668-21  
Misc : 5.0 mL/MSVOA\_V/WATER  
ALS Vial : 5 Sample Multiplier: 1

Instrument :  
MSVOA\_V  
ClientSampleId :  
VHBLK01

Quant Method : Z:\VOASRV\HPCHEM1\MSVOA\_V\METHOD\SOMVLM102318WMA.M  
Quant Title : VOC Analysis

TIC Library : C:\DATABASE\NIST11.L  
TIC Integration Parameters: LSCINT.P

No Library Search Compounds Detected

\*\*\*\*\*

Data Path : Z:\VOASRV\HPCHEM1\MSVOA\_V\DATA\VV102918\  
Data File : VV008448.D  
Acq On : 29 Oct 2018 13:09  
Operator : SY/MD  
Sample : J5668-21  
Misc : 5.0 mL/MSVOA\_V/WATER  
ALS Vial : 5 Sample Multiplier: 1

Instrument :  
MSVOA\_V  
ClientSampleId :  
VHBLK01

Quant Method : Z:\VOASRV\HPCHEM1\MSVOA\_V\METHOD\SOMVLM102318WMA.M  
Quant Title : VOC Analysis

TIC Library : C:\DATABASE\NIST11.L  
TIC Integration Parameters: LSCINT.P

TIC Top Hit name	RT	EstConc	Units	Response	--Internal Standard--			
					#	RT	Resp	Conc

---