

Data Path : Z:\voasrv\HPCHEM1\MSVOA_V\Data\VV103023\
Data File : VV032782.D
Acq On : 30 Oct 2023 19:21
Operator : SY/MD
Sample : 05114-17
Misc : 25.0mL/MSVOA_V/WATER
ALS Vial : 27 Sample Multiplier: 1

Instrument :
MSVOA_V
ClientSampleId :
C0B68

Integration Parameters: rteint.p
Integrator: RTE
Smoothing : ON Filtering: 5
Sampling : 1 Min Area: 3 % of largest Peak
Start Thrs: 0.1 Max Peaks: 100
Stop Thrs : 0 Peak Location: TOP

If leading or trailing edge < 100 prefer < Baseline drop else tangent >
Peak separation: 5

Method : Z:\voasrv\HPCHEM1\MSVOA_V\Method\SFAMVTR102723WMA.M
Title : TRACE VOA SFAM1.0

Signal : TIC: VV032782.D\data.ms

peak #	R.T. min	first scan	max scan	last scan	PK TY	peak height	corr. area	corr. % max.	% of total
1	7.969	2119	2155	2156	rBV6	107737589	416548510	100.00%	100.000%

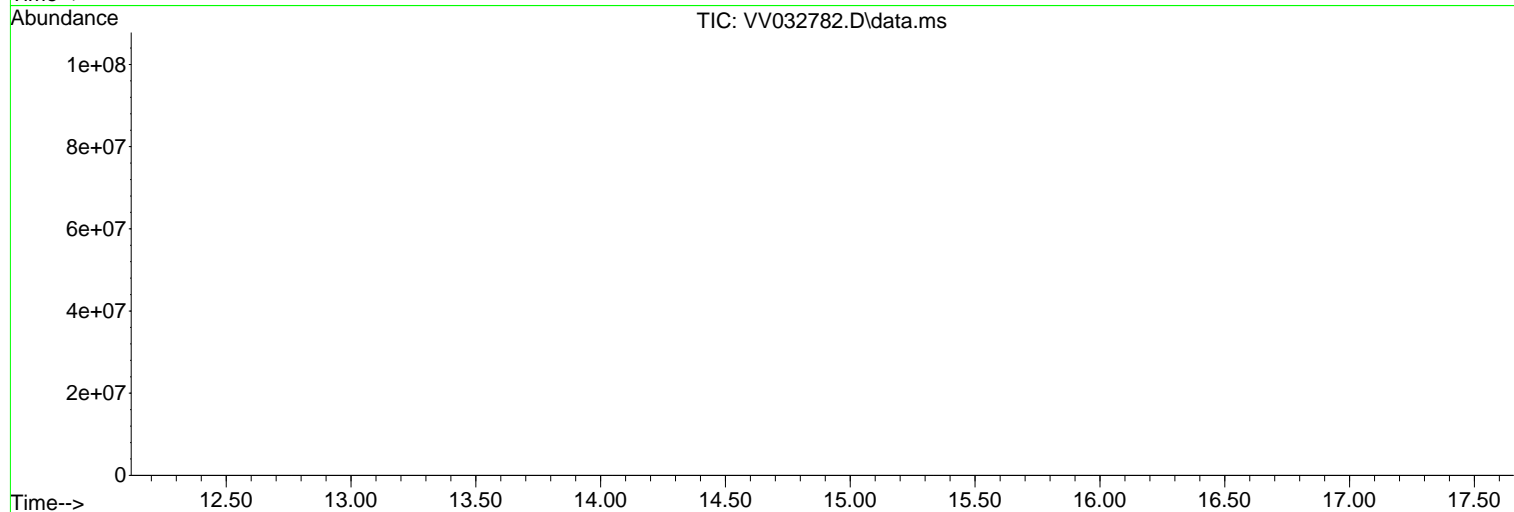
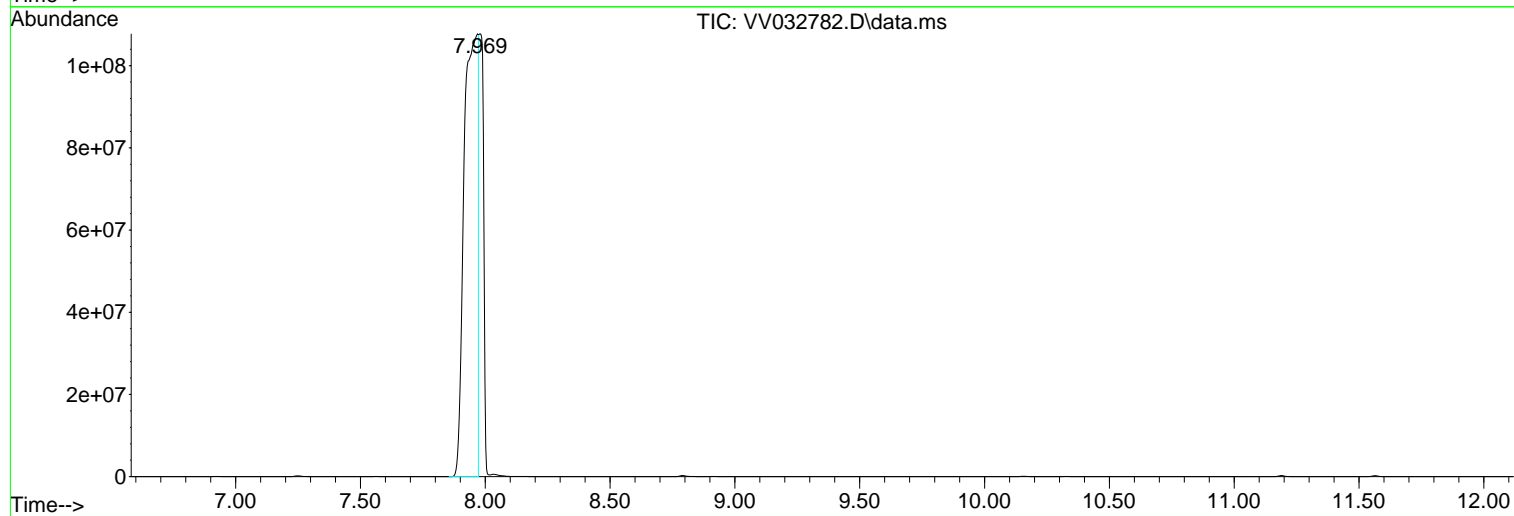
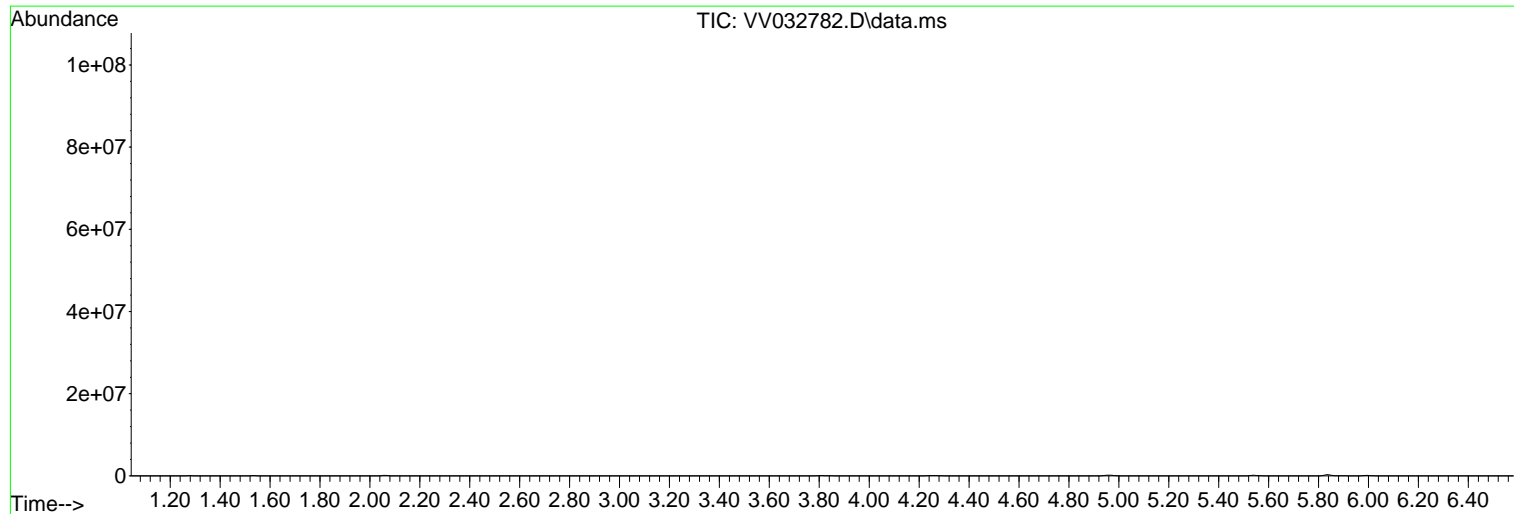
Sum of corrected areas: 416548510

Data Path : Z:\voasrv\HPCHEM1\MSVOA_V\Data\VV103023\
Data File : VV032782.D
Acq On : 30 Oct 2023 19:21
Operator : SY/MD
Sample : 05114-17
Misc : 25.0mL/MSVOA_V/WATER
ALS Vial : 27 Sample Multiplier: 1

Instrument :
MSVOA_V
ClientSampleId :
C0B68

Quant Method : Z:\voasrv\HPCHEM1\MSVOA_V\Method\SFAMVTR102723WMA.M
Quant Title : TRACE VOA SFAM1.0

TIC Library : C:\Database\NIST20.L
TIC Integration Parameters: LSCINT.P



Library Search Compound Report

Data Path : Z:\voasrv\HPCHEM1\MSVOA_V\Data\VV103023\
Data File : VV032782.D
Acq On : 30 Oct 2023 19:21
Operator : SY/MD
Sample : 05114-17
Misc : 25.0mL/MSVOA_V/WATER
ALS Vial : 27 Sample Multiplier: 1

Instrument :
MSVOA_V
ClientSampleId :
C0B68

Quant Method : Z:\voasrv\HPCHEM1\MSVOA_V\Method\SFAMVTR102723WMA.M
Quant Title : TRACE VOA SFAM1.0

TIC Library : C:\Database\NIST20.L
TIC Integration Parameters: LSCINT.P

No Library Search Compounds Detected

Data Path : Z:\voasrv\HPCHEM1\MSVOA_V\Data\VV103023\
Data File : VV032782.D
Acq On : 30 Oct 2023 19:21
Operator : SY/MD
Sample : 05114-17
Misc : 25.0mL/MSVOA_V/WATER
ALS Vial : 27 Sample Multiplier: 1

Instrument :
MSVOA_V
ClientSampleId :
C0B68

Quant Method : Z:\voasrv\HPCHEM1\MSVOA_V\Method\SFAMVTR102723WMA.M
Quant Title : TRACE VOA SFAM1.0

TIC Library : C:\Database\NIST0.L
TIC Integration Parameters: LSCINT.P

TIC Top Hit name	RT	EstConc	Units	Response	--Internal Standard--		
					#	RT	Resp Conc
