

Data Path : Z:\voasrv\HPCHEM1\MSVOA\_V\Data\VV103122\  
 Data File : VV028781.D  
 Acq On : 31 Oct 2022 15:33  
 Operator : SY/MD  
 Sample : N5301-05  
 Misc : 5.0mL/MSVOA\_V/WATER  
 ALS Vial : 13 Sample Multiplier: 1

Instrument :  
 MSVOA\_V  
 ClientSampleId :  
 DBWP1

Integration Parameters: LSCINT.P

Integrator: RTE  
 Smoothing : OFF  
 Sampling : 1  
 Start Thrs: 0.2  
 Stop Thrs : 0

Filtering: 5  
 Min Area: 0 % of largest Peak  
 Max Peaks: 100  
 Peak Location: TOP

If leading or trailing edge < 100 prefer < Baseline drop else tangent >  
 Peak separation: 5

Method : Z:\voasrv\HPCHEM1\MSVOA\_V\Method\SFAMVLM103122WMA.M  
 Title : VOC Analysis

Signal : TIC: VV028781.D\data.ms

| peak # | R.T. min | first scan | max scan | last scan | PK TY | peak height | corr. area | corr. % max. | % of total |
|--------|----------|------------|----------|-----------|-------|-------------|------------|--------------|------------|
| 1      | 1.307    | 76         | 83       | 103       | rBV2  | 298874      | 334285     | 4.93%        | 1.359%     |
| 2      | 1.564    | 157        | 163      | 180       | rVB   | 269202      | 316880     | 4.67%        | 1.288%     |
| 3      | 2.108    | 323        | 332      | 346       | rVB2  | 496501      | 724426     | 10.68%       | 2.944%     |
| 4      | 2.757    | 520        | 534      | 557       | rBV   | 1662458     | 2864280    | 42.21%       | 11.641%    |
| 5      | 3.384    | 726        | 729      | 732       | rBV4  | 1284        | 1041       | 0.02%        | 0.004%     |
| 6      | 3.407    | 733        | 736      | 739       | rBV5  | 1965        | 1276       | 0.02%        | 0.005%     |
| 7      | 3.449    | 747        | 749      | 751       | rBV3  | 1092        | 502        | 0.01%        | 0.002%     |
| 8      | 3.494    | 761        | 763      | 764       | rVB2  | 1073        | 324        | 0.00%        | 0.001%     |
| 9      | 3.506    | 764        | 767      | 772       | rBV7  | 2167        | 1855       | 0.03%        | 0.008%     |
| 10     | 3.641    | 805        | 809      | 811       | rBV5  | 1593        | 1248       | 0.02%        | 0.005%     |
| 11     | 3.664    | 814        | 816      | 819       | rVV4  | 1379        | 889        | 0.01%        | 0.004%     |
| 12     | 3.735    | 836        | 838      | 839       | rBV2  | 985         | 372        | 0.01%        | 0.002%     |
| 13     | 3.902    | 872        | 890      | 933       | rBV2  | 2716733     | 6785242    | 100.00%      | 27.576%    |
| 14     | 4.342    | 1013       | 1027     | 1050      | rBV   | 280590      | 685373     | 10.10%       | 2.785%     |
| 15     | 4.783    | 1162       | 1164     | 1167      | rBV3  | 1423        | 560        | 0.01%        | 0.002%     |
| 16     | 4.873    | 1190       | 1192     | 1196      | rVB4  | 1291        | 716        | 0.01%        | 0.003%     |
| 17     | 4.915    | 1202       | 1205     | 1209      | rVB6  | 1804        | 1016       | 0.01%        | 0.004%     |
| 18     | 5.043    | 1228       | 1245     | 1283      | rBV2  | 706236      | 1872397    | 27.60%       | 7.610%     |
| 19     | 5.436    | 1365       | 1367     | 1368      | rBV2  | 1148        | 398        | 0.01%        | 0.002%     |
| 20     | 5.612    | 1409       | 1422     | 1442      | rBV   | 554730      | 1125560    | 16.59%       | 4.574%     |
| 21     | 5.908    | 1502       | 1514     | 1535      | rBV   | 786270      | 1526354    | 22.50%       | 6.203%     |
| 22     | 6.066    | 1551       | 1563     | 1590      | rBV   | 421786      | 854634     | 12.60%       | 3.473%     |
| 23     | 6.564    | 1716       | 1718     | 1721      | rBV4  | 1738        | 1173       | 0.02%        | 0.005%     |
| 24     | 6.763    | 1778       | 1780     | 1782      | rVB3  | 1463        | 531        | 0.01%        | 0.002%     |
| 25     | 6.776    | 1782       | 1784     | 1786      | rBV3  | 1126        | 568        | 0.01%        | 0.002%     |
| 26     | 6.940    | 1832       | 1835     | 1837      | rBV4  | 1175        | 566        | 0.01%        | 0.002%     |
| 27     | 6.982    | 1837       | 1848     | 1871      | rBV   | 197993      | 375207     | 5.53%        | 1.525%     |
| 28     | 7.310    | 1939       | 1950     | 1971      | rBV   | 808431      | 1391770    | 20.51%       | 5.656%     |
| 29     | 7.619    | 2036       | 2046     | 2068      | rBV   | 124401      | 233036     | 3.43%        | 0.947%     |
| 30     | 8.050    | 2178       | 2180     | 2181      | rBV2  | 1410        | 508        | 0.01%        | 0.002%     |
| 31     | 8.085    | 2181       | 2191     | 2224      | rBV   | 474900      | 958763     | 14.13%       | 3.896%     |
| 32     | 8.435    | 2298       | 2300     | 2301      | rBV2  | 1410        | 486        | 0.01%        | 0.002%     |
| 33     | 8.509    | 2321       | 2323     | 2325      | rBV3  | 1407        | 864        | 0.01%        | 0.004%     |
| 34     | 8.712    | 2385       | 2386     | 2390      | rVB4  | 1157        | 548        | 0.01%        | 0.002%     |
| 35     | 8.786    | 2407       | 2409     | 2412      | rBV4  | 1110        | 587        | 0.01%        | 0.002%     |
| 36     | 8.847    | 2416       | 2428     | 2458      | rBV   | 796055      | 1344368    | 19.81%       | 5.464%     |

Data Path : Z:\voasrv\HPCHEM1\MSVOA\_V\Data\VW103122\  
 Data File : VW028781.D  
 Acq On : 31 Oct 2022 15:33  
 Operator : SY/MD  
 Sample : N5301-05  
 Misc : 5.0mL/MSVOA\_V/WATER  
 ALS Vial : 13 Sample Multiplier: 1

Instrument :  
 MSVOA\_V  
 ClientSampleId :  
 DBWP1

Integration Parameters: LSCINT.P

Integrator: RTE  
 Smoothing : OFF  
 Sampling : 1  
 Start Thrs: 0.2  
 Stop Thrs : 0

Filtering: 5  
 Min Area: 0 % of largest Peak  
 Max Peaks: 100  
 Peak Location: TOP

If leading or trailing edge < 100 prefer < Baseline drop else tangent >  
 Peak separation: 5

Method : Z:\voasrv\HPCHEM1\MSVOA\_V\Method\SFAMVLM103122WMA.M  
 Title : VOC Analysis

|    |        |      |      |      |      |        |         |        |        |
|----|--------|------|------|------|------|--------|---------|--------|--------|
| 37 | 9.230  | 2545 | 2547 | 2550 | rVB4 | 1912   | 873     | 0.01%  | 0.004% |
| 38 | 9.246  | 2550 | 2552 | 2562 | rVB9 | 2174   | 2760    | 0.04%  | 0.011% |
| 39 | 9.310  | 2568 | 2572 | 2574 | rBV4 | 3054   | 2393    | 0.04%  | 0.010% |
| 40 | 9.349  | 2582 | 2584 | 2585 | rBV2 | 1060   | 500     | 0.01%  | 0.002% |
| 41 | 9.394  | 2592 | 2598 | 2599 | rBV6 | 1167   | 1023    | 0.02%  | 0.004% |
| 42 | 9.525  | 2635 | 2639 | 2640 | rBV4 | 2170   | 1171    | 0.02%  | 0.005% |
| 43 | 9.651  | 2675 | 2678 | 2683 | rVB6 | 2316   | 1548    | 0.02%  | 0.006% |
| 44 | 9.673  | 2683 | 2685 | 2688 | rBV4 | 958    | 535     | 0.01%  | 0.002% |
| 45 | 9.689  | 2688 | 2690 | 2691 | rBV2 | 1045   | 470     | 0.01%  | 0.002% |
| 46 | 9.786  | 2713 | 2720 | 2722 | rBV6 | 1828   | 1834    | 0.03%  | 0.007% |
| 47 | 9.824  | 2729 | 2732 | 2735 | rBV4 | 1494   | 1106    | 0.02%  | 0.004% |
| 48 | 9.879  | 2746 | 2749 | 2751 | rBV4 | 1477   | 847     | 0.01%  | 0.003% |
| 49 | 10.149 | 2831 | 2833 | 2835 | rBV3 | 1419   | 882     | 0.01%  | 0.004% |
| 50 | 10.207 | 2840 | 2851 | 2870 | rVV  | 511812 | 819085  | 12.07% | 3.329% |
| 51 | 10.532 | 2949 | 2952 | 2953 | rBV3 | 1659   | 875     | 0.01%  | 0.004% |
| 52 | 10.619 | 2976 | 2979 | 2981 | rBV4 | 1923   | 1381    | 0.02%  | 0.006% |
| 53 | 10.680 | 2995 | 2998 | 3000 | rBV4 | 1791   | 1133    | 0.02%  | 0.005% |
| 54 | 10.760 | 3020 | 3023 | 3026 | rBV4 | 1627   | 1102    | 0.02%  | 0.004% |
| 55 | 10.783 | 3026 | 3030 | 3031 | rBV3 | 1352   | 934     | 0.01%  | 0.004% |
| 56 | 10.902 | 3065 | 3067 | 3068 | rBV2 | 1926   | 736     | 0.01%  | 0.003% |
| 57 | 11.040 | 3108 | 3110 | 3113 | rBV4 | 1406   | 736     | 0.01%  | 0.003% |
| 58 | 11.088 | 3121 | 3125 | 3127 | rBV5 | 1295   | 898     | 0.01%  | 0.004% |
| 59 | 11.165 | 3146 | 3149 | 3150 | rBV3 | 1909   | 1046    | 0.02%  | 0.004% |
| 60 | 11.239 | 3162 | 3172 | 3197 | rBV  | 739979 | 1182571 | 17.43% | 4.806% |
| 61 | 11.467 | 3240 | 3243 | 3246 | rBV5 | 2385   | 1801    | 0.03%  | 0.007% |
| 62 | 11.615 | 3278 | 3289 | 3307 | rBV  | 717703 | 1131954 | 16.68% | 4.600% |
| 63 | 11.902 | 3376 | 3378 | 3380 | rBV3 | 907    | 449     | 0.01%  | 0.002% |
| 64 | 11.959 | 3395 | 3396 | 3397 | rBV  | 913    | 340     | 0.01%  | 0.001% |
| 65 | 11.985 | 3403 | 3404 | 3406 | rBV2 | 1377   | 655     | 0.01%  | 0.003% |
| 66 | 12.037 | 3418 | 3420 | 3422 | rVB3 | 1496   | 572     | 0.01%  | 0.002% |
| 67 | 12.053 | 3422 | 3425 | 3427 | rBV4 | 1278   | 846     | 0.01%  | 0.003% |
| 68 | 12.091 | 3433 | 3437 | 3438 | rBV4 | 1705   | 1099    | 0.02%  | 0.004% |
| 69 | 12.120 | 3443 | 3446 | 3449 | rBV4 | 2262   | 1702    | 0.03%  | 0.007% |
| 70 | 12.136 | 3449 | 3451 | 3452 | rBV2 | 1361   | 436     | 0.01%  | 0.002% |
| 71 | 12.194 | 3468 | 3469 | 3472 | rVB3 | 1235   | 453     | 0.01%  | 0.002% |
| 72 | 12.220 | 3476 | 3477 | 3479 | rBV2 | 1056   | 507     | 0.01%  | 0.002% |
| 73 | 12.252 | 3484 | 3487 | 3489 | rBV4 | 1851   | 1124    | 0.02%  | 0.005% |
| 74 | 12.435 | 3541 | 3544 | 3548 | rVB5 | 2216   | 1114    | 0.02%  | 0.005% |
| 75 | 12.487 | 3558 | 3560 | 3564 | rVB3 | 2110   | 1066    | 0.02%  | 0.004% |
| 76 | 12.512 | 3564 | 3568 | 3569 | rBV4 | 1842   | 1103    | 0.02%  | 0.004% |

Data Path : Z:\voasrv\HPCHEM1\MSVOA\_V\Data\VV103122\  
 Data File : VV028781.D  
 Acq On : 31 Oct 2022 15:33  
 Operator : SY/MD  
 Sample : N5301-05  
 Misc : 5.0mL/MSVOA\_V/WATER  
 ALS Vial : 13 Sample Multiplier: 1

Instrument :  
 MSVOA\_V  
 ClientSampleId :  
 DBWP1

Integration Parameters: LSCINT.P

Integrator: RTE  
 Smoothing : OFF  
 Sampling : 1  
 Start Thrs: 0.2  
 Stop Thrs : 0

Filtering: 5  
 Min Area: 0 % of largest Peak  
 Max Peaks: 100  
 Peak Location: TOP

If leading or trailing edge < 100 prefer < Baseline drop else tangent >  
 Peak separation: 5

Method : Z:\voasrv\HPCHEM1\MSVOA\_V\Method\SFAMVLM103122WMA.M  
 Title : VOC Analysis

|     |        |      |      |      |      |      |      |       |        |
|-----|--------|------|------|------|------|------|------|-------|--------|
| 77  | 12.628 | 3600 | 3604 | 3605 | rBV4 | 3007 | 1539 | 0.02% | 0.006% |
| 78  | 12.673 | 3616 | 3618 | 3623 | rVB5 | 2674 | 1825 | 0.03% | 0.007% |
| 79  | 12.738 | 3636 | 3638 | 3642 | rVB4 | 1332 | 675  | 0.01% | 0.003% |
| 80  | 12.763 | 3642 | 3646 | 3649 | rBV6 | 1153 | 809  | 0.01% | 0.003% |
| 81  | 12.869 | 3673 | 3679 | 3681 | rBV5 | 1266 | 1048 | 0.02% | 0.004% |
| 82  | 12.895 | 3685 | 3687 | 3691 | rVV4 | 1429 | 906  | 0.01% | 0.004% |
| 83  | 12.947 | 3699 | 3703 | 3705 | rBV5 | 1861 | 1456 | 0.02% | 0.006% |
| 84  | 12.969 | 3708 | 3710 | 3712 | rBV3 | 1148 | 519  | 0.01% | 0.002% |
| 85  | 13.207 | 3782 | 3784 | 3785 | rBV2 | 1052 | 366  | 0.01% | 0.001% |
| 86  | 13.442 | 3854 | 3857 | 3858 | rBV4 | 1311 | 755  | 0.01% | 0.003% |
| 87  | 13.493 | 3871 | 3873 | 3874 | rBV2 | 3014 | 1243 | 0.02% | 0.005% |
| 88  | 13.567 | 3894 | 3896 | 3898 | rVB3 | 1244 | 427  | 0.01% | 0.002% |
| 89  | 13.619 | 3910 | 3912 | 3913 | rBV2 | 1013 | 388  | 0.01% | 0.002% |
| 90  | 13.802 | 3966 | 3969 | 3971 | rBV4 | 1197 | 727  | 0.01% | 0.003% |
| 91  | 13.840 | 3979 | 3981 | 3984 | rBV3 | 1291 | 865  | 0.01% | 0.004% |
| 92  | 13.963 | 4017 | 4019 | 4021 | rVB3 | 1128 | 306  | 0.00% | 0.001% |
| 93  | 13.979 | 4021 | 4024 | 4025 | rBV3 | 1425 | 719  | 0.01% | 0.003% |
| 94  | 14.098 | 4060 | 4061 | 4066 | rVB5 | 2204 | 1485 | 0.02% | 0.006% |
| 95  | 14.127 | 4066 | 4070 | 4072 | rBV5 | 2275 | 1570 | 0.02% | 0.006% |
| 96  | 14.300 | 4117 | 4124 | 4125 | rBV7 | 2744 | 2802 | 0.04% | 0.011% |
| 97  | 14.390 | 4150 | 4152 | 4157 | rBV6 | 1586 | 1423 | 0.02% | 0.006% |
| 98  | 14.512 | 4187 | 4190 | 4191 | rBV3 | 1791 | 914  | 0.01% | 0.004% |
| 99  | 14.557 | 4200 | 4204 | 4206 | rBV5 | 1547 | 1381 | 0.02% | 0.006% |
| 100 | 14.670 | 4235 | 4239 | 4242 | rBV5 | 1832 | 1375 | 0.02% | 0.006% |

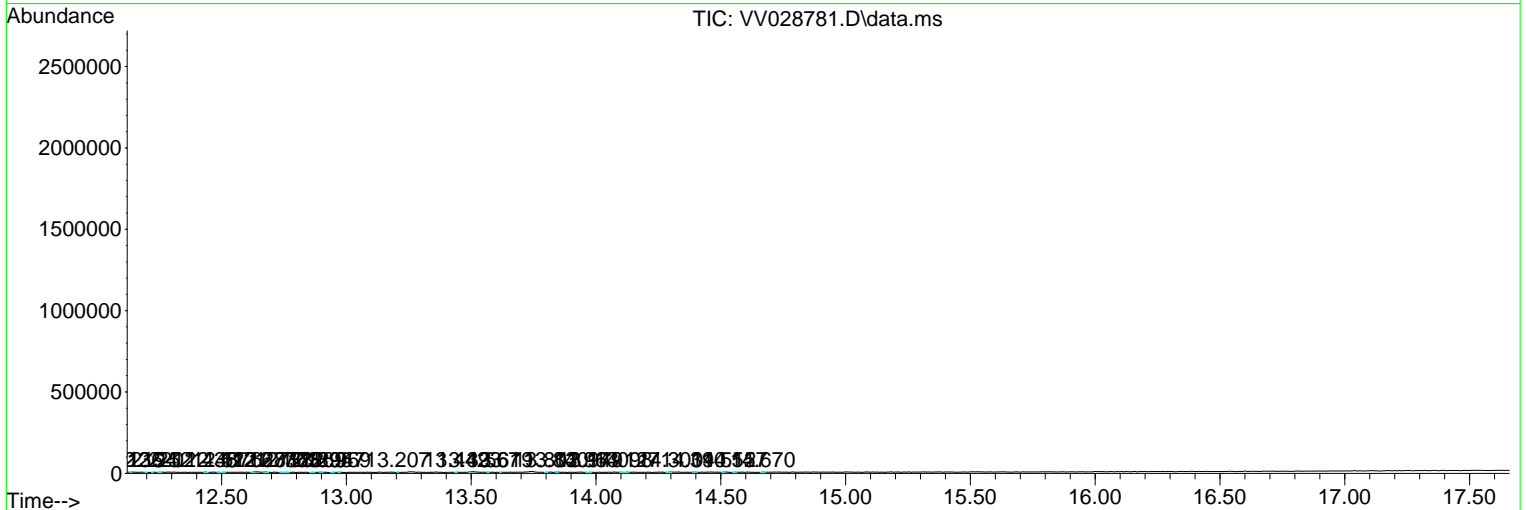
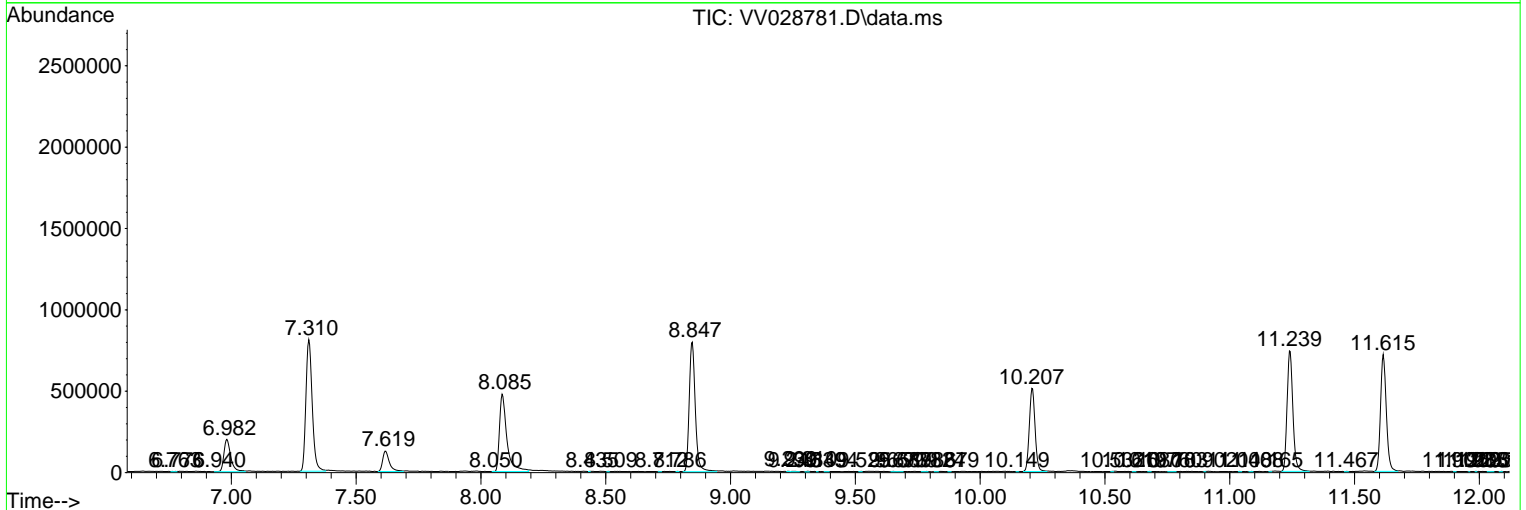
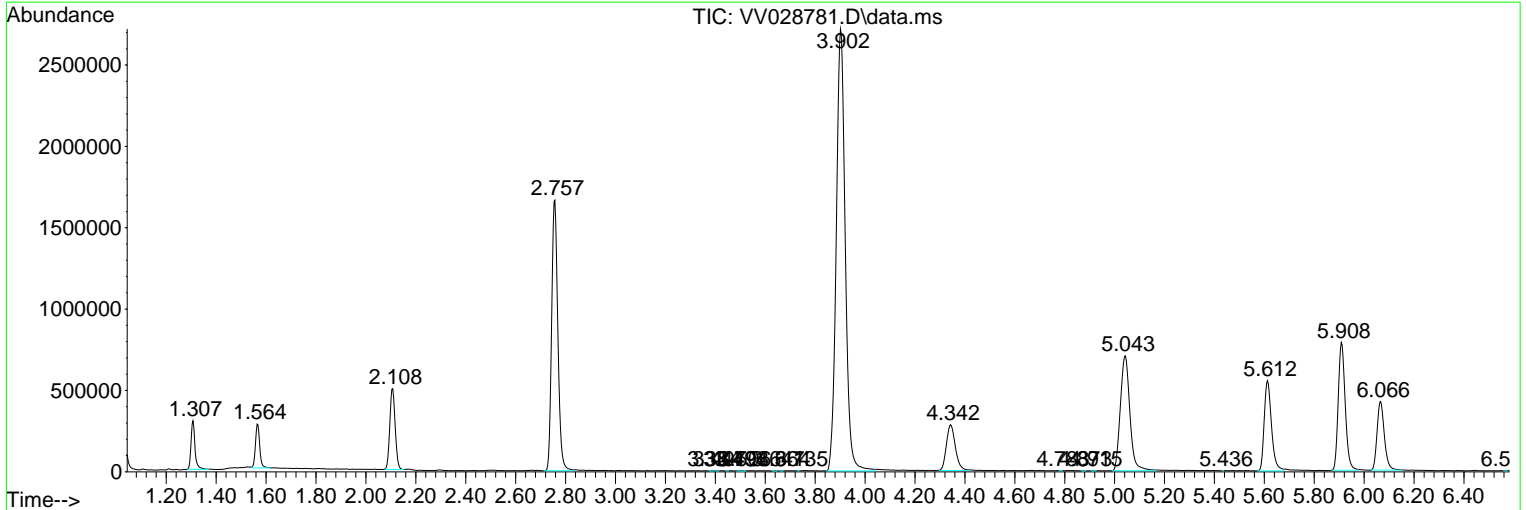
Sum of corrected areas: 24605786

Data Path : Z:\voasrv\HPCHEM1\MSVOA\_V\Data\VV103122\  
 Data File : VV028781.D  
 Acq On : 31 Oct 2022 15:33  
 Operator : SY/MD  
 Sample : N5301-05  
 Misc : 5.0mL/MSVOA\_V/WATER  
 ALS Vial : 13 Sample Multiplier: 1

**Instrument :**  
 MSVOA\_V  
**ClientSampleId :**  
 DBWP1

Quant Method : Z:\voasrv\HPCHEM1\MSVOA\_V\Method\SFAMVLM103122WMA.M  
 Quant Title : VOC Analysis

TIC Library : C:\Database\NIST20.L  
 TIC Integration Parameters: LSCINT.P



Data Path : Z:\voasrv\HPCHEM1\MSVOA\_V\Data\VW103122\  
Data File : VW028781.D  
Acq On : 31 Oct 2022 15:33  
Operator : SY/MD  
Sample : N5301-05  
Misc : 5.0mL/MSVOA\_V/WATER  
ALS Vial : 13 Sample Multiplier: 1

Instrument :  
MSVOA\_V  
ClientSampleId :  
DBWP1

Quant Method : Z:\voasrv\HPCHEM1\MSVOA\_V\Method\SFAMVLM103122WMA.M  
Quant Title : VOC Analysis

TIC Library : C:\Database\NIST20.L  
TIC Integration Parameters: LSCINT.P

No Library Search Compounds Detected

\*\*\*\*\*

Data Path : Z:\voasrv\HPCHEM1\MSVOA\_V\Data\VV103122\  
Data File : VV028781.D  
Acq On : 31 Oct 2022 15:33  
Operator : SY/MD  
Sample : N5301-05  
Misc : 5.0mL/MSVOA\_V/WATER  
ALS Vial : 13 Sample Multiplier: 1

Instrument :  
MSVOA\_V  
ClientSampleId :  
DBWP1

Quant Method : Z:\voasrv\HPCHEM1\MSVOA\_V\Method\SFAMVLM103122WMA.M  
Quant Title : VOC Analysis

TIC Library : C:\Database\NIST0.L  
TIC Integration Parameters: LSCINT.P

| TIC Top Hit name | RT | EstConc | Units | Response | --Internal Standard-- |    |           |
|------------------|----|---------|-------|----------|-----------------------|----|-----------|
|                  |    |         |       |          | #                     | RT | Resp Conc |

---