

Data Path : Z:\VOASRV\HPCHEM1\MSVOA\_V\DATA\VV110119\  
 Data File : VV013466.D  
 Acq On : 01 Nov 2019 13:59  
 Operator : SY/MD  
 Sample : VV1101SBL01  
 Misc : 5.00G/10.0ML/MSVOA\_V/SOIL  
 ALS Vial : 11 Sample Multiplier: 1

Instrument :  
 MSVOA\_V  
 ClientSampleId :  
 VBLK78

## Integration Parameters: LSCINT.P

Integrator: RTE  
 Smoothing : OFF  
 Sampling : 1  
 Start Thrs: 0.2  
 Stop Thrs : 0

Filtering: 5  
 Min Area: 0 % of largest Peak  
 Max Peaks: 100  
 Peak Location: TOP

If leading or trailing edge < 100 prefer < Baseline drop else tangent >  
 Peak separation: 5

Method : Z:\VOASRV\HPCHEM1\MSVOA\_V\METHOD\SOM2VLM110119S.M  
 Title : VOC Analysis

Signal : TIC

| peak # | R.T. min | first scan | max scan | last scan | PK TY | peak height | corr. area | corr. % max. | % of total |
|--------|----------|------------|----------|-----------|-------|-------------|------------|--------------|------------|
| 1      | 1.225    | 39         | 42       | 47        | rVB3  | 19902       | 14240      | 0.50%        | 0.066%     |
| 2      | 1.315    | 63         | 70       | 89        | rVB   | 394951      | 435221     | 15.17%       | 2.032%     |
| 3      | 1.579    | 144        | 152      | 167       | rVB   | 292511      | 346467     | 12.08%       | 1.618%     |
| 4      | 2.126    | 312        | 322      | 336       | rBV   | 634737      | 904426     | 31.53%       | 4.223%     |
| 5      | 2.405    | 406        | 409      | 413       | rBV6  | 2275        | 1811       | 0.06%        | 0.008%     |
| 6      | 2.499    | 435        | 438      | 439       | rBV3  | 4275        | 2491       | 0.09%        | 0.012%     |
| 7      | 2.534    | 439        | 449      | 463       | rVB   | 78457       | 129954     | 4.53%        | 0.607%     |
| 8      | 2.650    | 473        | 485      | 493       | rBV3  | 21831       | 42316      | 1.48%        | 0.198%     |
| 9      | 2.749    | 512        | 516      | 518       | rBV5  | 2636        | 2483       | 0.09%        | 0.012%     |
| 10     | 2.778    | 521        | 525      | 527       | rBV4  | 3367        | 2598       | 0.09%        | 0.012%     |
| 11     | 2.791    | 527        | 529      | 532       | rVV3  | 3215        | 2316       | 0.08%        | 0.011%     |
| 12     | 2.907    | 560        | 565      | 569       | rBV8  | 2550        | 2608       | 0.09%        | 0.012%     |
| 13     | 2.965    | 577        | 583      | 584       | rBV5  | 4688        | 4259       | 0.15%        | 0.020%     |
| 14     | 3.039    | 601        | 606      | 608       | rBV6  | 3318        | 2611       | 0.09%        | 0.012%     |
| 15     | 3.068    | 612        | 615      | 617       | rBV4  | 4020        | 2585       | 0.09%        | 0.012%     |
| 16     | 3.399    | 712        | 718      | 722       | rBV9  | 2716        | 2556       | 0.09%        | 0.012%     |
| 17     | 3.428    | 722        | 727      | 730       | rVV7  | 3906        | 3631       | 0.13%        | 0.017%     |
| 18     | 3.601    | 776        | 781      | 783       | rBV5  | 2429        | 2141       | 0.07%        | 0.010%     |
| 19     | 3.643    | 790        | 794      | 799       | rVB7  | 3417        | 2623       | 0.09%        | 0.012%     |
| 20     | 3.749    | 823        | 827      | 830       | rBV6  | 3258        | 2474       | 0.09%        | 0.012%     |
| 21     | 3.788    | 836        | 839      | 843       | rVV5  | 3163        | 2608       | 0.09%        | 0.012%     |
| 22     | 3.859    | 859        | 861      | 866       | rVB5  | 3053        | 1924       | 0.07%        | 0.009%     |
| 23     | 3.939    | 871        | 886      | 919       | rBV4  | 162304      | 609261     | 21.24%       | 2.845%     |
| 24     | 4.289    | 993        | 995      | 998       | rVV4  | 2864        | 1999       | 0.07%        | 0.009%     |
| 25     | 4.396    | 1010       | 1028     | 1052      | rVV   | 458041      | 1135959    | 39.60%       | 5.304%     |
| 26     | 4.553    | 1073       | 1077     | 1079      | rVB4  | 3156        | 1838       | 0.06%        | 0.009%     |
| 27     | 4.576    | 1079       | 1084     | 1087      | rBV7  | 4015        | 3031       | 0.11%        | 0.014%     |
| 28     | 4.807    | 1151       | 1156     | 1160      | rBV8  | 3153        | 3285       | 0.11%        | 0.015%     |
| 29     | 5.090    | 1225       | 1244     | 1259      | rBV2  | 1130847     | 2868611    | 100.00%      | 13.395%    |
| 30     | 5.283    | 1301       | 1304     | 1307      | rBV5  | 3213        | 3010       | 0.10%        | 0.014%     |
| 31     | 5.322    | 1312       | 1316     | 1319      | rBV6  | 2926        | 2037       | 0.07%        | 0.010%     |
| 32     | 5.399    | 1337       | 1340     | 1345      | rVB7  | 2572        | 2349       | 0.08%        | 0.011%     |
| 33     | 5.428    | 1345       | 1349     | 1350      | rBV4  | 2668        | 2047       | 0.07%        | 0.010%     |
| 34     | 5.498    | 1365       | 1371     | 1374      | rBV7  | 3012        | 2770       | 0.10%        | 0.013%     |

Data Path : Z:\VOASRV\HPCHEM1\MSVOA\_V\DATA\VV110119\  
 Data File : VV013466.D  
 Acq On : 01 Nov 2019 13:59  
 Operator : SY/MD  
 Sample : VV1101SBL01  
 Misc : 5.00G/10.0ML/MSVOA\_V/SOIL  
 ALS Vial : 11 Sample Multiplier: 1

Instrument :  
 MSVOA\_V  
 ClientSampleId :  
 VBLK78

## Integration Parameters: LSCINT.P

Integrator: RTE  
 Smoothing : OFF  
 Sampling : 1  
 Start Thrs: 0.2  
 Stop Thrs : 0

Filtering: 5  
 Min Area: 0 % of largest Peak  
 Max Peaks: 100  
 Peak Location: TOP

If leading or trailing edge < 100 prefer < Baseline drop else tangent >  
 Peak separation: 5

Method : Z:\VOASRV\HPCHEM1\MSVOA\_V\METHOD\SOM2VLM110119S.M  
 Title : VOC Analysis

|    |        |      |      |      |       |         |         |        |         |
|----|--------|------|------|------|-------|---------|---------|--------|---------|
| 35 | 5.527  | 1374 | 1380 | 1383 | rBV7  | 3423    | 4283    | 0.15%  | 0.020%  |
| 36 | 5.592  | 1397 | 1400 | 1404 | rVB6  | 3324    | 2761    | 0.10%  | 0.013%  |
| 37 | 5.659  | 1408 | 1421 | 1442 | rBV   | 849174  | 1687008 | 58.81% | 7.878%  |
| 38 | 5.945  | 1502 | 1510 | 1526 | rVB3  | 42063   | 86033   | 3.00%  | 0.402%  |
| 39 | 6.113  | 1544 | 1562 | 1592 | rBV   | 627866  | 1282774 | 44.72% | 5.990%  |
| 40 | 6.412  | 1653 | 1655 | 1659 | rVB5  | 3267    | 1977    | 0.07%  | 0.009%  |
| 41 | 6.627  | 1718 | 1722 | 1727 | rVV7  | 2991    | 2550    | 0.09%  | 0.012%  |
| 42 | 6.698  | 1736 | 1744 | 1756 | rVB7  | 8633    | 19174   | 0.67%  | 0.090%  |
| 43 | 6.762  | 1761 | 1764 | 1766 | rBV4  | 2909    | 2102    | 0.07%  | 0.010%  |
| 44 | 6.813  | 1773 | 1780 | 1793 | rVB7  | 19288   | 39630   | 1.38%  | 0.185%  |
| 45 | 6.871  | 1793 | 1798 | 1799 | rBV4  | 4428    | 2545    | 0.09%  | 0.012%  |
| 46 | 6.945  | 1816 | 1821 | 1824 | rBV7  | 3184    | 3078    | 0.11%  | 0.014%  |
| 47 | 7.026  | 1829 | 1846 | 1868 | rBV   | 329449  | 611890  | 21.33% | 2.857%  |
| 48 | 7.283  | 1915 | 1926 | 1927 | rBV9  | 12730   | 15539   | 0.54%  | 0.073%  |
| 49 | 7.357  | 1937 | 1949 | 1965 | rBV   | 1328540 | 2249670 | 78.42% | 10.505% |
| 50 | 7.659  | 2033 | 2043 | 2061 | rBV   | 221763  | 370789  | 12.93% | 1.731%  |
| 51 | 7.977  | 2131 | 2142 | 2150 | rBV2  | 46845   | 93951   | 3.28%  | 0.439%  |
| 52 | 8.129  | 2179 | 2189 | 2217 | rBV2  | 362027  | 734792  | 25.61% | 3.431%  |
| 53 | 8.415  | 2270 | 2278 | 2285 | rBV2  | 9722    | 16190   | 0.56%  | 0.076%  |
| 54 | 8.457  | 2285 | 2291 | 2301 | rVB2  | 15792   | 27062   | 0.94%  | 0.126%  |
| 55 | 8.701  | 2358 | 2367 | 2376 | rBV2  | 7607    | 13723   | 0.48%  | 0.064%  |
| 56 | 8.801  | 2395 | 2398 | 2400 | rBV4  | 3035    | 1976    | 0.07%  | 0.009%  |
| 57 | 8.891  | 2414 | 2426 | 2450 | rBV   | 1274845 | 2108995 | 73.52% | 9.848%  |
| 58 | 9.058  | 2473 | 2478 | 2487 | rVB10 | 8062    | 12089   | 0.42%  | 0.056%  |
| 59 | 9.177  | 2509 | 2515 | 2517 | rBV6  | 6882    | 7465    | 0.26%  | 0.035%  |
| 60 | 9.373  | 2573 | 2576 | 2578 | rBV3  | 3268    | 2056    | 0.07%  | 0.010%  |
| 61 | 9.559  | 2632 | 2634 | 2636 | rBV3  | 3742    | 2561    | 0.09%  | 0.012%  |
| 62 | 9.936  | 2746 | 2751 | 2754 | rBV6  | 4580    | 4547    | 0.16%  | 0.021%  |
| 63 | 10.087 | 2796 | 2798 | 2804 | rVB7  | 3422    | 2475    | 0.09%  | 0.012%  |
| 64 | 10.122 | 2804 | 2809 | 2811 | rBV6  | 3385    | 3295    | 0.11%  | 0.015%  |
| 65 | 10.257 | 2838 | 2851 | 2867 | rBV   | 545684  | 860245  | 29.99% | 4.017%  |
| 66 | 10.418 | 2889 | 2901 | 2916 | rVV2  | 105217  | 184302  | 6.42%  | 0.861%  |
| 67 | 10.495 | 2921 | 2925 | 2931 | rVB8  | 3538    | 4323    | 0.15%  | 0.020%  |
| 68 | 10.585 | 2946 | 2953 | 2958 | rBV9  | 7744    | 11400   | 0.40%  | 0.053%  |
| 69 | 10.714 | 2988 | 2993 | 2995 | rBV4  | 2477    | 2020    | 0.07%  | 0.009%  |
| 70 | 10.759 | 3004 | 3007 | 3008 | rBV3  | 3977    | 2374    | 0.08%  | 0.011%  |
| 71 | 10.890 | 3046 | 3048 | 3054 | rVV7  | 3306    | 2270    | 0.08%  | 0.011%  |

Data Path : Z:\VOASRV\HPCHEM1\MSVOA\_V\DATA\VV110119\  
 Data File : VV013466.D  
 Acq On : 01 Nov 2019 13:59  
 Operator : SY/MD  
 Sample : VV1101SBL01  
 Misc : 5.00G/10.0ML/MSVOA\_V/SOIL  
 ALS Vial : 11 Sample Multiplier: 1

Instrument :  
 MSVOA\_V  
 ClientSampleId :  
 VBLK78

## Integration Parameters: LSCINT.P

Integrator: RTE  
 Smoothing : OFF Filtering: 5  
 Sampling : 1 Min Area: 0 % of largest Peak  
 Start Thrs: 0.2 Max Peaks: 100  
 Stop Thrs : 0 Peak Location: TOP

If leading or trailing edge < 100 prefer < Baseline drop else tangent >  
 Peak separation: 5

Method : Z:\VOASRV\HPCHEM1\MSVOA\_V\METHOD\SOM2VLM110119S.M  
 Title : VOC Analysis

|     |        |      |      |      |      |         |         |        |        |
|-----|--------|------|------|------|------|---------|---------|--------|--------|
| 72  | 10.916 | 3054 | 3056 | 3060 | rVB4 | 3372    | 2023    | 0.07%  | 0.009% |
| 73  | 10.955 | 3060 | 3068 | 3083 | rBV9 | 12807   | 23816   | 0.83%  | 0.111% |
| 74  | 11.119 | 3113 | 3119 | 3120 | rBV5 | 3618    | 3115    | 0.11%  | 0.015% |
| 75  | 11.186 | 3133 | 3140 | 3142 | rBV6 | 7862    | 7383    | 0.26%  | 0.034% |
| 76  | 11.289 | 3161 | 3172 | 3190 | rBV  | 1324080 | 2034178 | 70.91% | 9.499% |
| 77  | 11.431 | 3211 | 3216 | 3218 | rBV6 | 6200    | 6703    | 0.23%  | 0.031% |
| 78  | 11.572 | 3256 | 3260 | 3261 | rBV5 | 3759    | 2519    | 0.09%  | 0.012% |
| 79  | 11.665 | 3277 | 3289 | 3305 | rBV  | 1245025 | 1983007 | 69.13% | 9.260% |
| 80  | 12.234 | 3463 | 3466 | 3470 | rBV5 | 3220    | 2477    | 0.09%  | 0.012% |
| 81  | 12.292 | 3474 | 3484 | 3495 | rVV  | 66310   | 113775  | 3.97%  | 0.531% |
| 82  | 12.334 | 3495 | 3497 | 3505 | rVB9 | 4098    | 4673    | 0.16%  | 0.022% |
| 83  | 12.370 | 3505 | 3508 | 3513 | rBV6 | 2342    | 2510    | 0.09%  | 0.012% |
| 84  | 12.418 | 3518 | 3523 | 3526 | rBV6 | 4649    | 4455    | 0.16%  | 0.021% |
| 85  | 12.582 | 3572 | 3574 | 3576 | rBV3 | 3189    | 1832    | 0.06%  | 0.009% |
| 86  | 12.646 | 3591 | 3594 | 3596 | rBV4 | 3477    | 1979    | 0.07%  | 0.009% |
| 87  | 12.694 | 3603 | 3609 | 3621 | rVB8 | 14497   | 24932   | 0.87%  | 0.116% |
| 88  | 12.932 | 3679 | 3683 | 3687 | rVB6 | 3980    | 3376    | 0.12%  | 0.016% |
| 89  | 13.019 | 3707 | 3710 | 3713 | rBV5 | 3314    | 2502    | 0.09%  | 0.012% |
| 90  | 13.122 | 3737 | 3742 | 3745 | rVB7 | 3109    | 2409    | 0.08%  | 0.011% |
| 91  | 13.186 | 3757 | 3762 | 3764 | rBV6 | 2911    | 2415    | 0.08%  | 0.011% |
| 92  | 13.215 | 3769 | 3771 | 3775 | rBV5 | 3433    | 2359    | 0.08%  | 0.011% |
| 93  | 13.308 | 3792 | 3800 | 3806 | rBV5 | 15063   | 24595   | 0.86%  | 0.115% |
| 94  | 13.550 | 3869 | 3875 | 3876 | rBV6 | 12377   | 10397   | 0.36%  | 0.049% |
| 95  | 13.749 | 3932 | 3937 | 3939 | rBV5 | 2627    | 2572    | 0.09%  | 0.012% |
| 96  | 13.791 | 3940 | 3950 | 3961 | rVV2 | 57682   | 98165   | 3.42%  | 0.458% |
| 97  | 14.086 | 4034 | 4042 | 4043 | rBV8 | 3838    | 4951    | 0.17%  | 0.023% |
| 98  | 14.183 | 4067 | 4072 | 4074 | rBV6 | 6170    | 5771    | 0.20%  | 0.027% |
| 99  | 14.604 | 4200 | 4203 | 4205 | rBV4 | 3827    | 2508    | 0.09%  | 0.012% |
| 100 | 14.820 | 4266 | 4270 | 4272 | rBV5 | 3430    | 3175    | 0.11%  | 0.015% |

Sum of corrected areas: 21415026



Data Path : Z:\VOASRV\HPCHEM1\MSVOA\_V\DATA\VV110119\  
 Data File : VV013466.D  
 Acq On : 01 Nov 2019 13:59  
 Operator : SY/MD  
 Sample : VV1101SBL01  
 Misc : 5.00G/10.0ML/MSVOA\_V/SOIL  
 ALS Vial : 11 Sample Multiplier: 1

Instrument :  
 MSVOA\_V  
 ClientSampled :  
 VBLK78

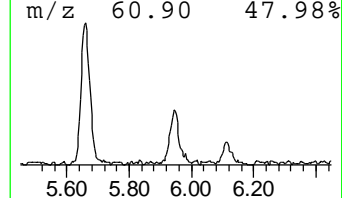
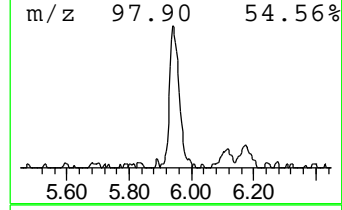
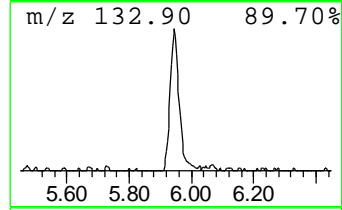
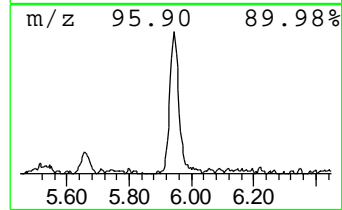
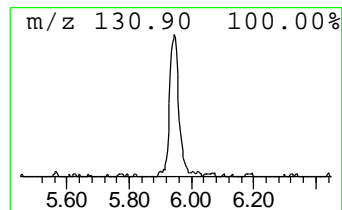
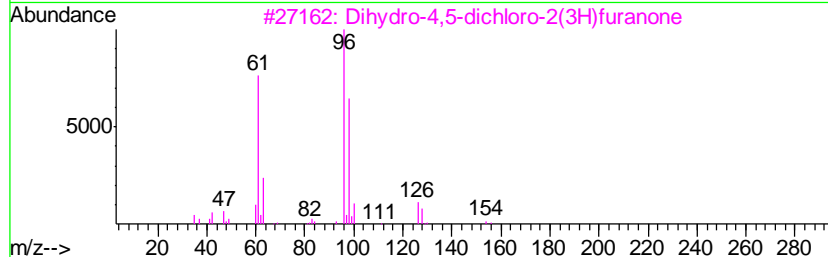
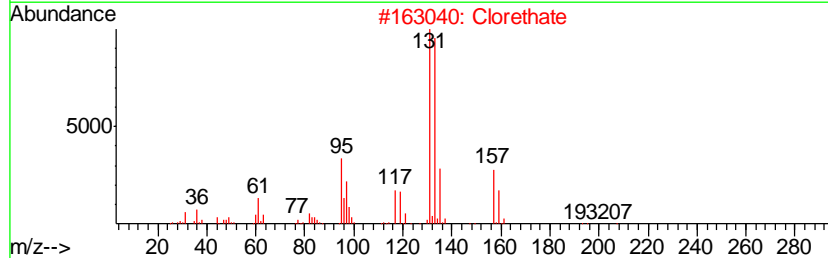
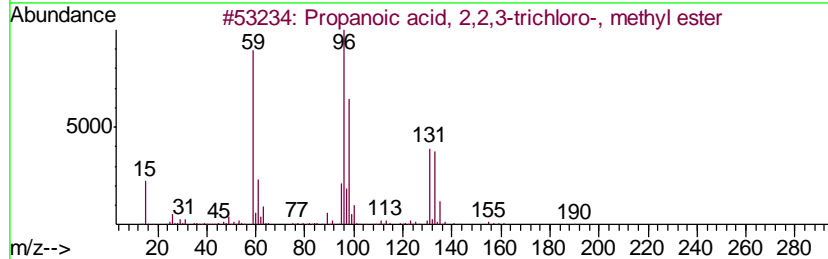
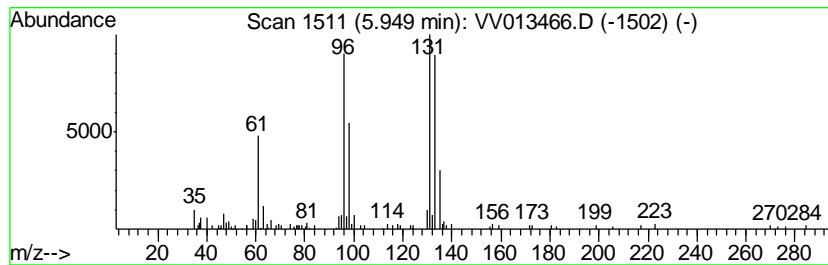
Quant Method : Z:\VOASRV\HPCHEM1\MSVOA\_V\METHOD\SOM2VLM110119S.M  
 Quant Title : VOC Analysis

TIC Library : C:\DATABASE\NIST11.L  
 TIC Integration Parameters: LSCINT.P

\*\*\*\*\*  
 Peak Number 1 unknown-01 Concentration Rank 4

| R.T. | EstConc   | Area  | Relative to ISTD    | R.T. |
|------|-----------|-------|---------------------|------|
| 5.95 | 1.27 ug/L | 86033 | 1,4-Difluorobenzene | 5.66 |

| Hit# | of | Tentative ID                        | MW  | MolForm   | CAS#        | Qual |
|------|----|-------------------------------------|-----|-----------|-------------|------|
| 1    | 5  | Propanoic acid, 2,2,3-trichloro-... | 190 | C4H5Cl3O2 | 004749-35-3 | 39   |
| 2    |    | Clorethate                          | 322 | C5H4Cl6O3 | 005634-37-7 | 37   |
| 3    |    | Dihydro-4,5-dichloro-2(3H)furanone  | 154 | C4H4Cl2O2 | 114434-99-0 | 25   |
| 4    |    | Ethylene, 1,2-dichloro-, (Z)-       | 96  | C2H2Cl2   | 000156-59-2 | 25   |
| 5    |    | 4-Cyclopentene-1,3-dione            | 96  | C5H4O2    | 000930-60-9 | 10   |



Data Path : Z:\VOASRV\HPCHEM1\MSVOA\_V\DATA\VV110119\  
 Data File : VV013466.D  
 Acq On : 01 Nov 2019 13:59  
 Operator : SY/MD  
 Sample : VV1101SBL01  
 Misc : 5.00G/10.0ML/MSVOA\_V/SOIL  
 ALS Vial : 11 Sample Multiplier: 1

Instrument :  
 MSVOA\_V  
 ClientSampleID :  
 VBLK78

Quant Method : Z:\VOASRV\HPCHEM1\MSVOA\_V\METHOD\SOM2VLM110119S.M  
 Quant Title : VOC Analysis

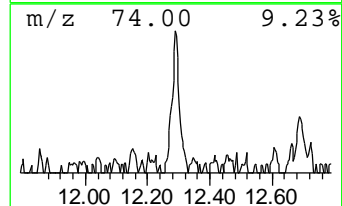
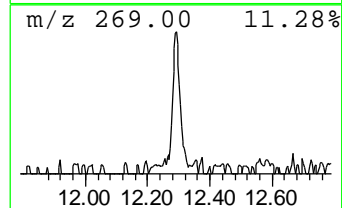
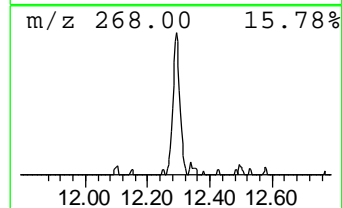
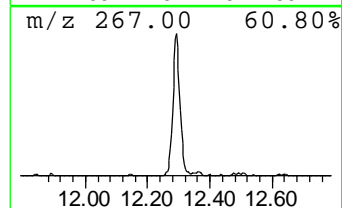
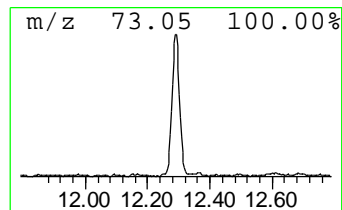
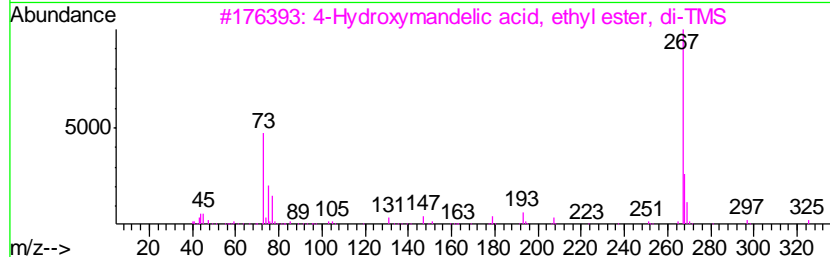
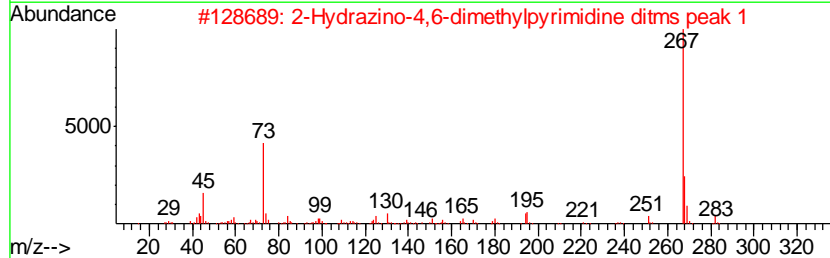
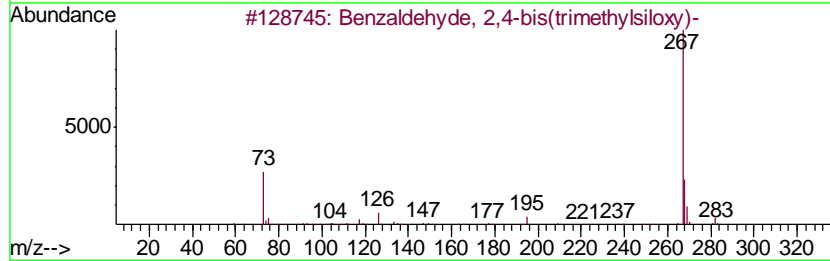
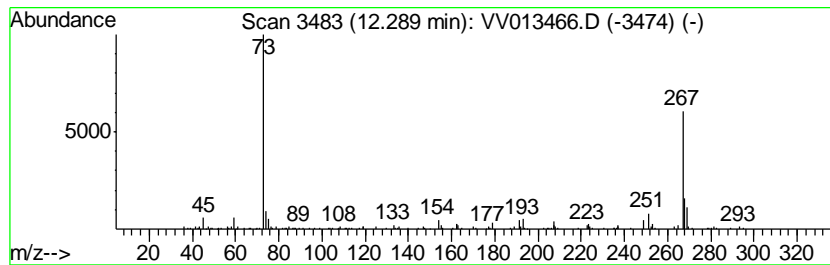
TIC Library : C:\DATABASE\NIST11.L  
 TIC Integration Parameters: LSCINT.P

\*\*\*\*\*  
 Peak Number 4 Benzaldehyde, 2,4-bis(trimethylsiloxy)- Concentration Rank 3

| R.T.  | EstConc   | Area   | Relative to ISTD       | R.T.  |
|-------|-----------|--------|------------------------|-------|
| 12.29 | 1.40 ug/L | 113775 | 1,4-Dichlorobenzene-d4 | 11.29 |

| Hit# | of | Tentative ID                                | MW  | MolForm      | CAS#         | Qual |
|------|----|---|-----|--------------|--------------|------|
| 1    | 5  | Benzaldehyde, 2,4-bis(trimethylsiloxy)-     | 282 | C13H22O3Si2  | 033617-38-8  | 64   |
| 2    |    | 2-Hydrazino-4,6-dimethylpyrimidin-5(1H)-one | 282 | C12H26N4Si2  | 1000332-01-6 | 56   |
| 3    |    | 4-Hydroxymandelic acid, ethyl ester, di-TMS | 340 | C16H28O4Si2  | 1000071-53-3 | 50   |
| 4    |    | Benzeneethanamine, N-butyl-.beta.           | 353 | C18H35NO2Si2 | 040629-66-1  | 50   |
| 5    |    | Plumbane, diethyldimethyl-                  | 296 | C6H16Pb      | 001762-27-2  | 49   |



Data Path : Z:\VOASRV\HPCHEM1\MSVOA\_V\DATA\VV110119\  
Data File : VV013466.D  
Acq On : 01 Nov 2019 13:59  
Operator : SY/MD  
Sample : VV1101SBL01  
Misc : 5.00G/10.0ML/MSVOA\_V/SOIL  
ALS Vial : 11 Sample Multiplier: 1

Instrument :  
MSVOA\_V  
ClientSampleId :  
VBLK78

Quant Method : Z:\VOASRV\HPCHEM1\MSVOA\_V\METHOD\SOM2VLM110119S.M  
Quant Title : VOC Analysis

TIC Library : C:\DATABASE\NIST11.L  
TIC Integration Parameters: LSCINT.P

| TIC Top Hit name     | RT    | EstConc | Units | Response | --Internal Standard-- |       |         |      |
|----------------------|-------|---------|-------|----------|-----------------------|-------|---------|------|
|                      |       |         |       |          | #                     | RT    | Resp    | Conc |
| unknown-01           | 5.95  | 1.3     | ug/L  | 86033    | 1                     | 5.66  | 1687010 | 25.0 |
| Benzaldehyde, 2,4... | 12.29 | 1.4     | ug/L  | 113775   | 3                     | 11.29 | 2034180 | 25.0 |