

# Quantitation Report (QT Reviewed)

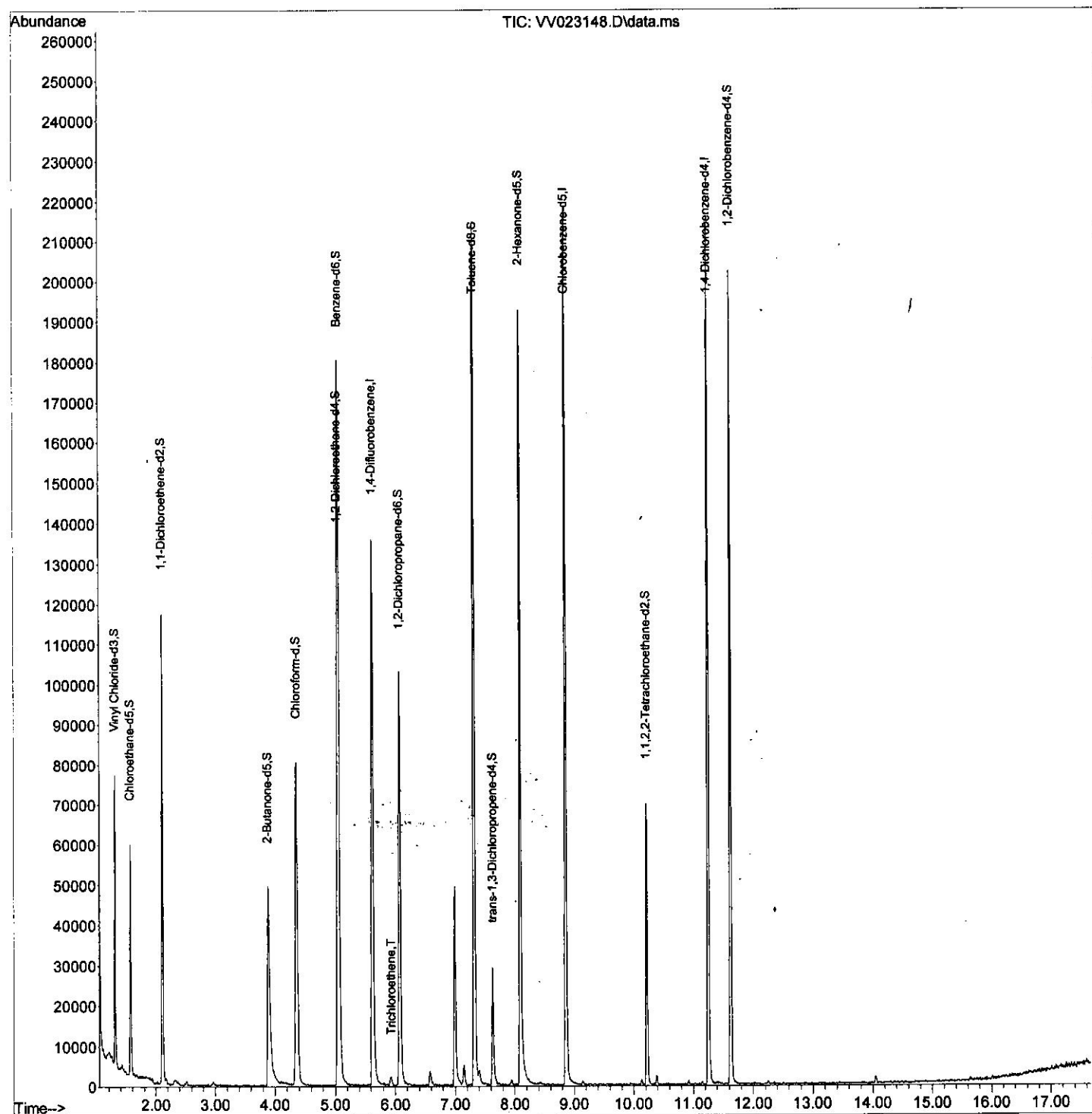
Data Path : Z:\voasrv\HPCHEM1\MSVOA\_V\Data\VW110221\  
 Data File : VW023148.D  
 Acq On : 02 Nov 2021 15:07  
 Operator : SY/MD  
 Sample : M4443-02  
 Misc : 25.0mL/MSVOA\_V/WATER  
 ALS Vial : 44 Sample Multiplier: 1

Instrument :  
 MSVOA\_V  
 Client Sampled :  
 C0B09

Quant Time: Nov 02 22:42:56 2021  
 Quant Method : Z:\voasrv\HPCHEM1\MSVOA\_V\Method\SFAMVTR102221WMA.M  
 Quant Title : TRACE VOA SFAM1.0  
 QLast Update : Tue Nov 02 22:38:58 2021  
 Response via : Initial Calibration

Manual Integrations APPROVED

Reviewed By : John Carlone 11/08/2021  
 Supervised By : Mahesh Dadoda 11/08/2021



# Quantitation Report (Qedit)

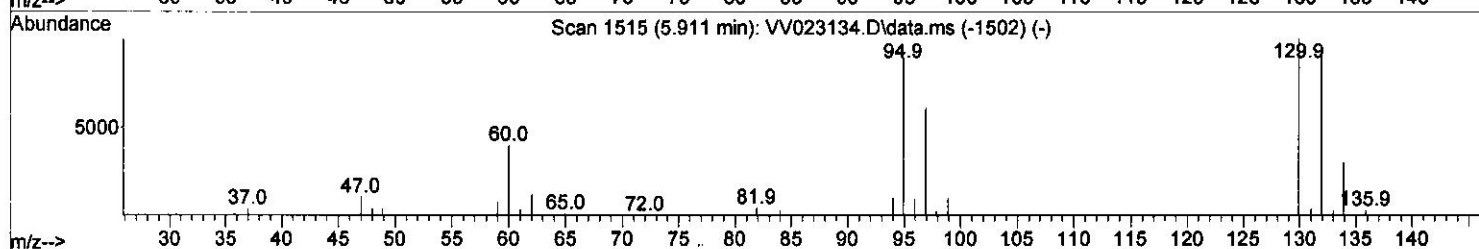
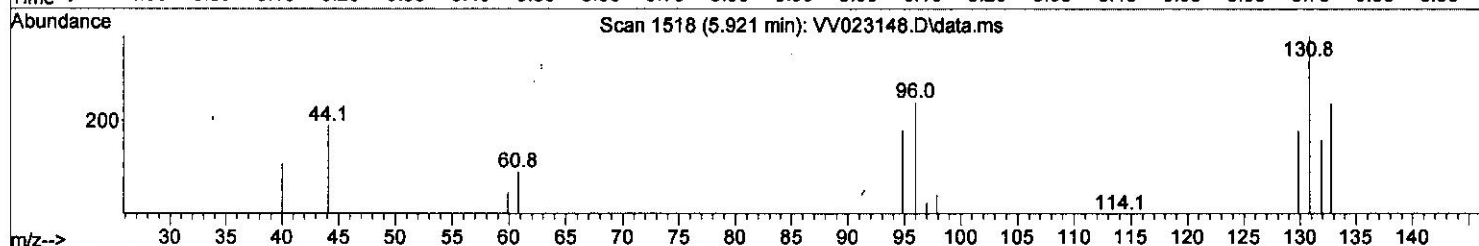
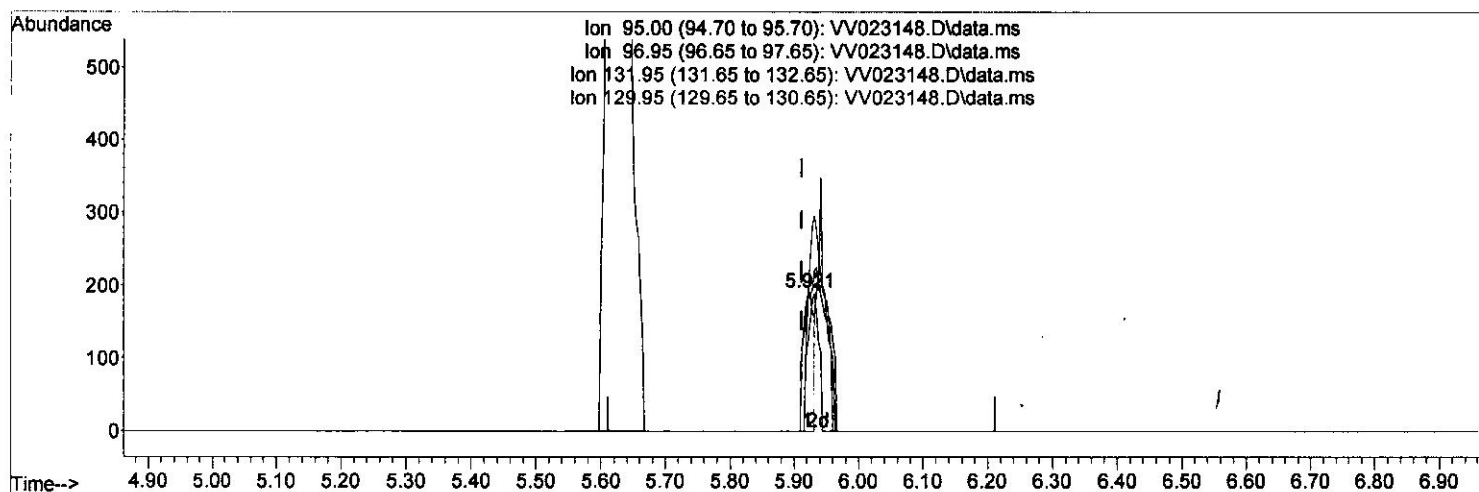
Data Path : Z:\voasrv\HPCHEM1\MSVOA\_V\Data\VV110221\  
 Data File : VV023148.D  
 Acq On : 02 Nov 2021 15:07  
 Operator : SY/MD  
 Sample : M4443-02  
 Misc : 25.0mL/MSVOA\_V/WATER  
 ALS Vial : 44 Sample Multiplier: 1

Instrument :  
 MSVOA\_V  
 Client Sampled :  
 C0B09

Quant Time: Nov 02 22:42:56 2021  
 Quant Method : Z:\voasrv\HPCHEM1\MSVOA\_V\Method\SFAMVTR102221WMA.M  
 Quant Title : TRACE VOA SFAM1.0  
 QLast Update : Tue Nov 02 22:38:58 2021  
 Response via : Initial Calibration

Manual Integrations APPROVED

Reviewed By : John Carlone 11/08/2021  
 Supervised By : Mahesh Dadoda 11/08/2021



TIC: VV023148.D\data.ms

(34) Trichloroethene (T)

5.921min (+ 0.010) 0.03 ug/L

response 217

Ion	Exp%	Act%
95.00	100.00	100.00
96.95	64.30	65.63
131.95	99.50	95.31
129.95	105.30	99.48

# Quantitation Report (Qedit)

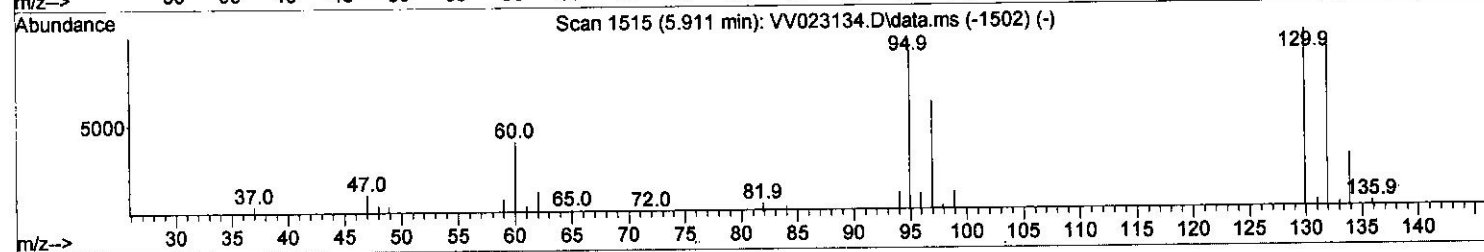
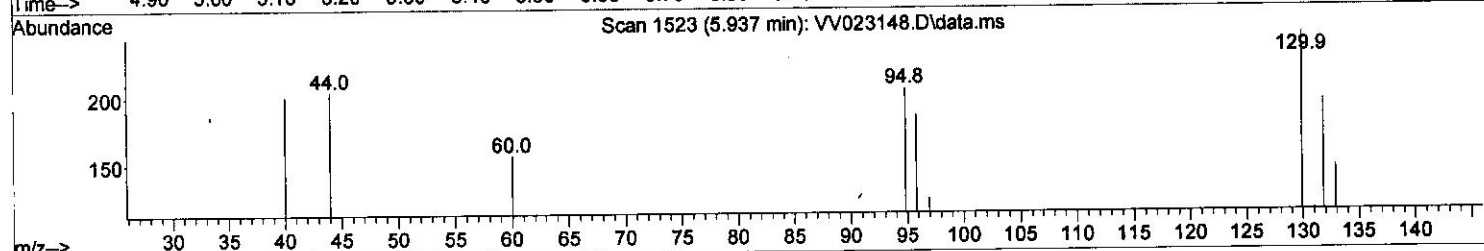
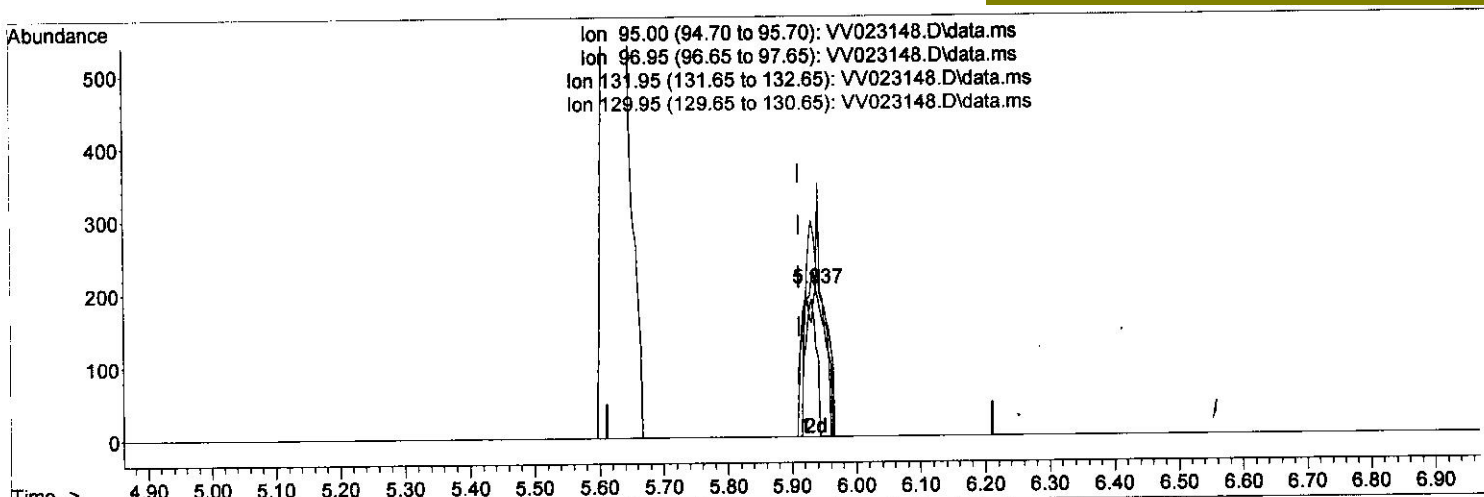
Data Path : Z:\voasrv\HPCHEM1\MSVOA\_V\Data\VV110221\  
 Data File : VV023148.D  
 Acq On : 02 Nov 2021 15:07  
 Operator : SY/MD  
 Sample : M4443-02  
 Misc : 25.0mL/MSVOA\_V/WATER  
 ALS Vial : 44 Sample Multiplier: 1

Instrument :  
 MSVOA\_V  
 Client Sampled :  
 C0B09

Quant Time: Nov 02 22:42:56 2021  
 Quant Method : Z:\voasrv\HPCHEM1\MSVOA\_V\Method\SFAMVTR102221WMA.M  
 Quant Title : TRACE VOA SFAM1.0  
 QLast Update : Tue Nov 02 22:38:58 2021  
 Response via : Initial Calibration

Manual Integrations APPROVED

Reviewed By : John Carlone 11/08/2021  
 Supervised By : Mahesh Dadoda 11/08/2021



TIC: VV023148.D\data.ms

(34) Trichloroethene (T)

5.937min (+ 0.026) 0.06 ug/L m

response 527

Ion	Exp%	Act%
95.00	100.00	100.00
96.95	64.30	60.00
131.95	99.50	95.12
129.95	105.30	119.51

## Quantitation Report (QT Reviewed)

Data Path : Z:\voasrv\HPCHEM1\MSVOA\_V\Data\VV110221\  
 Data File : VV023148.D  
 Acq On : 02 Nov 2021 15:07  
 Operator : SY/MD  
 Sample : M4443-02  
 Misc : 25.0mL/MSVOA\_V/WATER  
 ALS Vial : 44 Sample Multiplier: 1

Instrument :  
 MSVOA\_V  
 Client Sampled :  
 C0B09

Quant Time: Nov 02 22:42:56 2021  
 Quant Method : Z:\voasrv\HPCHEM1\MSVOA\_V\Method\SFAMVTR102221WMA.M  
 Quant Title : TRACE VOA SFAM1.0  
 QLast Update : Tue Nov 02 22:38:58 2021  
 Response via : Initial Calibration

Manual Integrations APPROVED

Reviewed By : John Carlone 11/08/2021  
 Supervised By : Mahesh Dadoda 11/08/2021

Compound	R.T.	QIon	Response	Conc	Units	Dev(Min)
Internal Standards						
1) 1,4-Difluorobenzene	5.622	114	122626	5.000	ug/L	0.01
28) Chlorobenzene-d5	8.857	117	123378	5.000	ug/L	0.00
58) 1,4-Dichlorobenzene-d4	11.252	152	59244	5.000	ug/L	0.00
System Monitoring Compounds						
4) Vinyl Chloride-d3	1.307	65	43053	4.018	ug/L	0.00
Spiked Amount	5.000	Range 40 - 130	Recovery =	80.400%		
7) Chloroethane-d5	1.568	69	34330	5.179	ug/L	0.00
Spiked Amount	5.000	Range 65 - 130	Recovery =	103.600%		
11) 1,1-Dichloroethene-d2	2.111	63	58761	3.801	ug/L	0.00
Spiked Amount	5.000	Range 60 - 125	Recovery =	76.000%		
20) 2-Butanone-d5	3.886	46	76219	44.342	ug/L	-0.01
Spiked Amount	50.000	Range 40 - 130	Recovery =	88.680%		
24) Chloroform-d	4.355	84	85806	4.926	ug/L	0.00
Spiked Amount	5.000	Range 70 - 125	Recovery =	98.600%		
26) 1,2-Dichloroethane-d4	5.040	65	39750	4.841	ug/L	0.00
Spiked Amount	5.000	Range 70 - 130	Recovery =	96.800%		
32) Benzene-d6	5.056	84	165396	4.592	ug/L	0.00
Spiked Amount	5.000	Range 70 - 125	Recovery =	91.800%		
36) 1,2-Dichloropropane-d6	6.072	67	49097	4.428	ug/L	0.00
Spiked Amount	5.000	Range 60 - 140	Recovery =	88.600%		
41) Toluene-d8	7.320	98	144211	4.457	ug/L	0.00
Spiked Amount	5.000	Range 70 - 130	Recovery =	89.200%		
43) trans-1,3-Dichloroprop...	7.629	79	17414	4.482	ug/L	0.00
Spiked Amount	5.000	Range 55 - 130	Recovery =	89.600%		
46) 2-Hexanone-d5	8.092	63	64010	44.501	ug/L	0.00
Spiked Amount	50.000	Range 45 - 130	Recovery =	89.000%		
56) 1,1,2,2-Tetrachloroeth...	10.217	84	33040	4.315	ug/L	0.00
Spiked Amount	5.000	Range 65 - 120	Recovery =	86.400%		
66) 1,2-Dichlorobenzene-d4	11.625	152	52884	5.003	ug/L	0.00
Spiked Amount	5.000	Range 80 - 120	Recovery =	100.000%		

Target Compounds

34) Trichloroethene	5.937	95	527m	0.063	ug/L	Qvalue
---------------------	-------	----	------	-------	------	--------

(#) = qualifier out of range (m) = manual integration (+) = signals summed