

Data Path : Z:\voasrv\HPCHEM1\MSVOA\_V\Data\VW110222\  
 Data File : VV028836.D  
 Acq On : 02 Nov 2022 13:08  
 Operator : SY/MD  
 Sample : N5321-13  
 Misc : 5.0mL/MSVOA\_V/WATER  
 ALS Vial : 8 Sample Multiplier: 1

Instrument :  
 MSVOA\_V  
 ClientSampleId :  
 DBWN7

Quant Time: Nov 03 03:30:13 2022  
 Quant Method : Z:\voasrv\HPCHEM1\MSVOA\_V\Method\SFAMVLM103122WMA.M  
 Quant Title : VOC Analysis  
 QLast Update : Wed Nov 02 05:10:28 2022  
 Response via : Initial Calibration

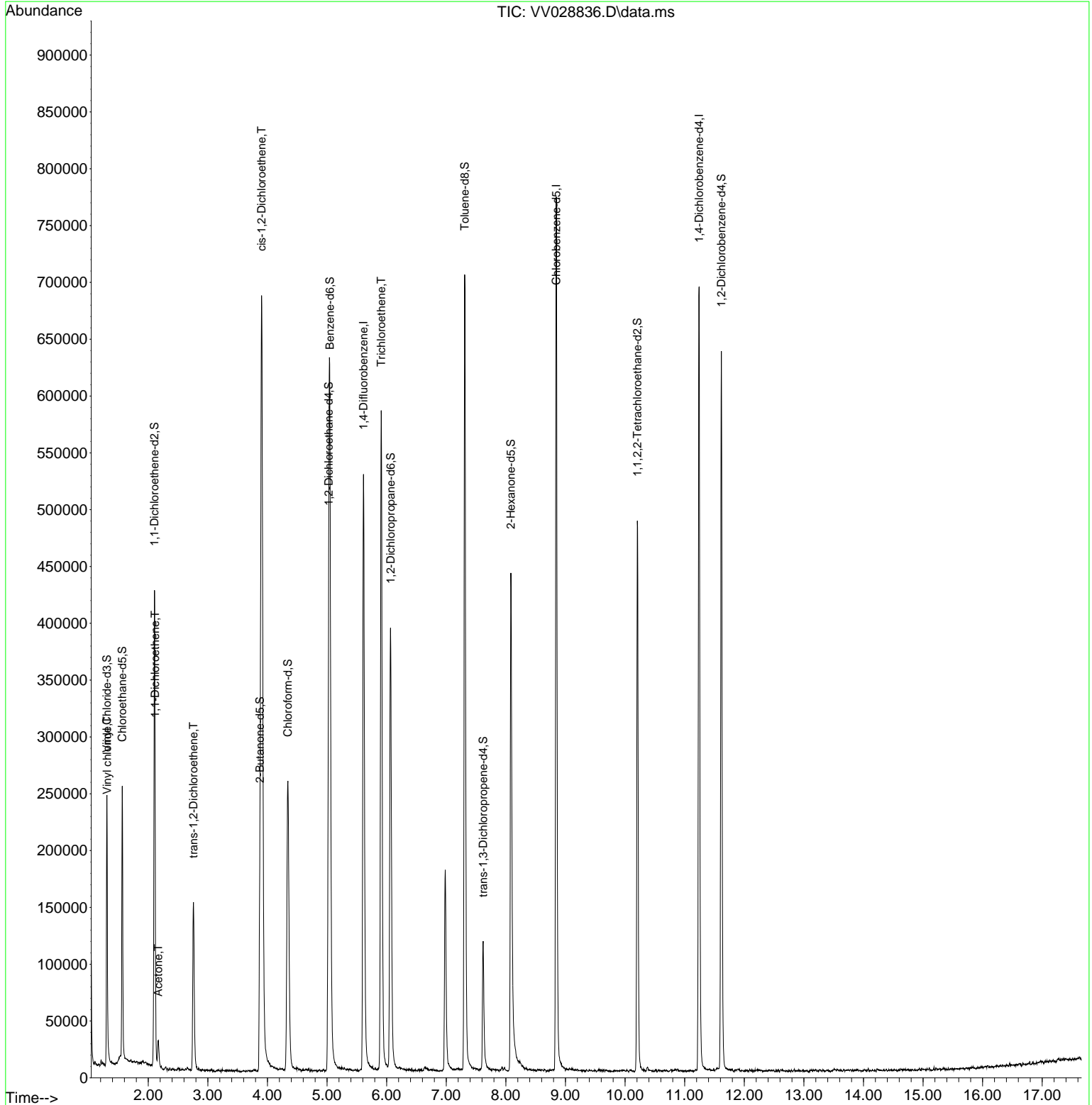
Compound	R.T.	QIon	Response	Conc	Units	Dev(Min)
Internal Standards						
1) 1,4-Difluorobenzene	5.612	114	419142	50.000	ug/L	0.00
28) Chlorobenzene-d5	8.847	117	380325	50.000	ug/L	0.00
58) 1,4-Dichlorobenzene-d4	11.242	152	163261	50.000	ug/L	0.00
System Monitoring Compounds						
4) Vinyl Chloride-d3	1.304	65	152246	38.317	ug/L	0.00
Spiked Amount	50.000	Range 60 - 135	Recovery =	76.640%		
7) Chloroethane-d5	1.564	69	147899	43.543	ug/L	0.00
Spiked Amount	50.000	Range 70 - 130	Recovery =	87.080%		
11) 1,1-Dichloroethene-d2	2.105	63	230252	30.464	ug/L	0.00
Spiked Amount	50.000	Range 60 - 125	Recovery =	60.920%		
21) 2-Butanone-d5	3.873	46	254071	87.842	ug/L	0.00
Spiked Amount	100.000	Range 40 - 130	Recovery =	87.840%		
24) Chloroform-d	4.342	84	256104	42.736	ug/L	0.00
Spiked Amount	50.000	Range 70 - 125	Recovery =	85.480%		
26) 1,2-Dichloroethane-d4	5.027	65	181620	45.825	ug/L	0.00
Spiked Amount	50.000	Range 70 - 125	Recovery =	91.640%		
32) Benzene-d6	5.047	84	522360	43.996	ug/L	0.00
Spiked Amount	50.000	Range 70 - 125	Recovery =	88.000%		
36) 1,2-Dichloropropane-d6	6.066	67	190105	46.639	ug/L	0.00
Spiked Amount	50.000	Range 70 - 120	Recovery =	93.280%		
41) Toluene-d8	7.310	98	438387	42.001	ug/L	0.00
Spiked Amount	50.000	Range 80 - 120	Recovery =	84.000%		
43) trans-1,3-Dichloroprop...	7.619	79	63130	40.325	ug/L	0.00
Spiked Amount	50.000	Range 60 - 125	Recovery =	80.660%		
47) 2-Hexanone-d5	8.085	63	155354	84.338	ug/L	0.00
Spiked Amount	100.000	Range 45 - 130	Recovery =	84.340%		
56) 1,1,2,2-Tetrachloroeth...	10.207	84	235532	43.820	ug/L	0.00
Spiked Amount	50.000	Range 65 - 120	Recovery =	87.640%		
66) 1,2-Dichlorobenzene-d4	11.615	152	143689	44.588	ug/L	0.00
Spiked Amount	50.000	Range 80 - 120	Recovery =	89.180%		
Target Compounds						
5) Vinyl chloride	1.310	62	22274	4.727	ug/L	91
12) 1,1-Dichloroethene	2.114	96	5616	1.796	ug/L #	1
13) Acetone	2.169	43	21309	7.609	ug/L	99
17) trans-1,2-Dichloroethene	2.757	96	51131	16.909	ug/L	96
20) cis-1,2-Dichloroethene	3.902	96	325506	97.562	ug/L	99
34) Trichloroethene	5.908	95	199879	63.835	ug/L	97

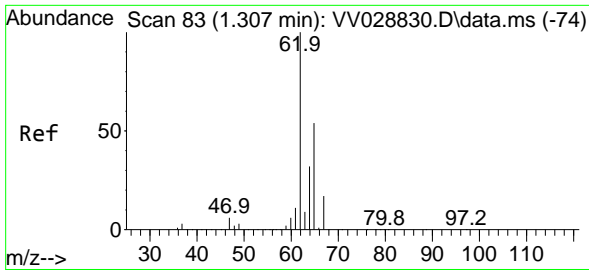
(#) = qualifier out of range (m) = manual integration (+) = signals summed

Data Path : Z:\voasrv\HPCHEM1\MSVOA\_V\Data\VV110222\  
 Data File : VV028836.D  
 Acq On : 02 Nov 2022 13:08  
 Operator : SY/MD  
 Sample : N5321-13  
 Misc : 5.0mL/MSVOA\_V/WATER  
 ALS Vial : 8 Sample Multiplier: 1

Instrument :  
 MSVOA\_V  
 ClientSampleId :  
 DBWN7

Quant Time: Nov 03 03:30:13 2022  
 Quant Method : Z:\voasrv\HPCHEM1\MSVOA\_V\Method\SFAMVLM103122WMA.M  
 Quant Title : VOC Analysis  
 QLast Update : Wed Nov 02 05:10:28 2022  
 Response via : Initial Calibration

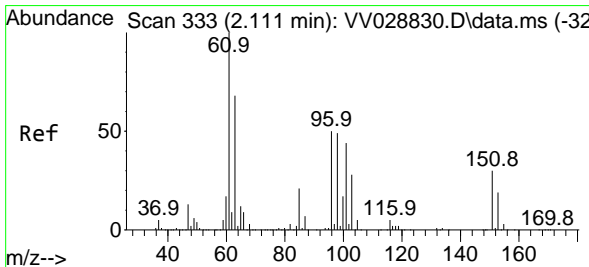
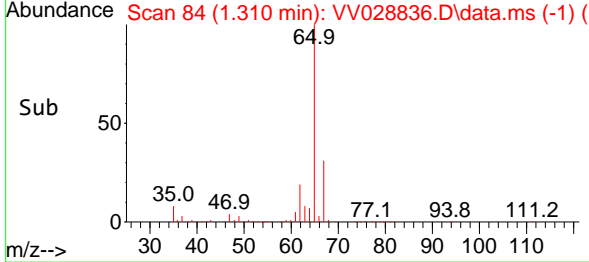
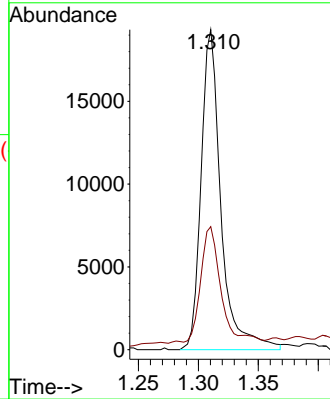
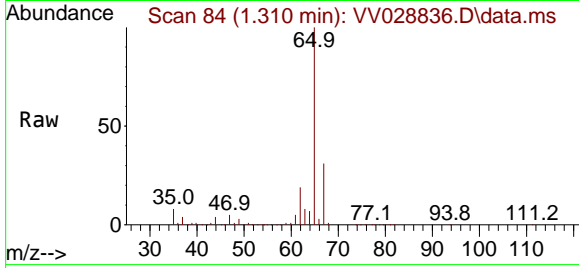




#5  
 Vinyl chloride  
 Concen: 4.727 ug/L  
 RT: 1.310 min Scan# 84  
 Delta R.T. -0.000 min  
 Lab File: VV028836.D  
 Acq: 02 Nov 2022 13:08

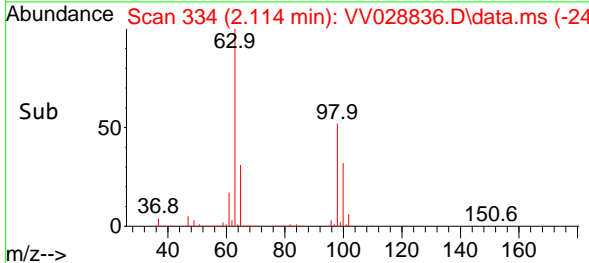
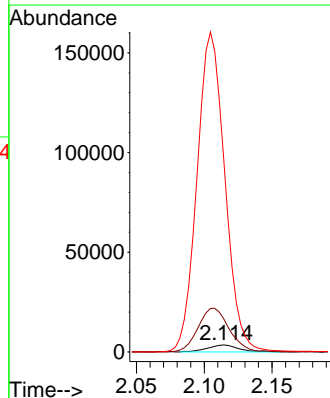
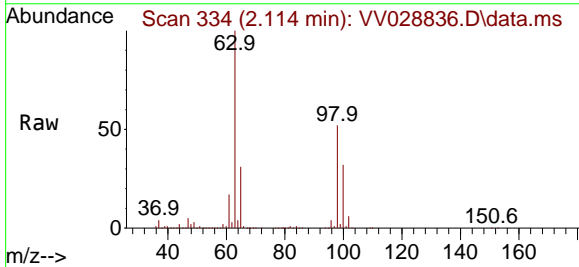
Instrument : MSVOA\_V  
 ClientSampleId : DBWN7

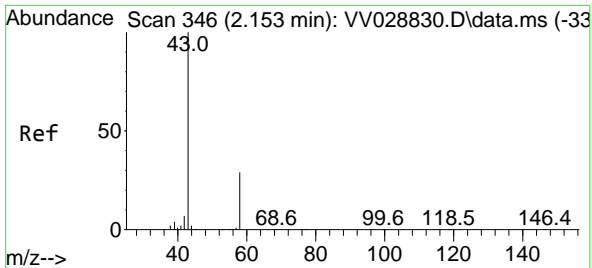
Tgt Ion: 62 Resp: 22274  
 Ion Ratio Lower Upper  
 62 100  
 64 38.4 23.2 43.0



#12  
 1,1-Dichloroethene  
 Concen: 1.796 ug/L  
 RT: 2.114 min Scan# 334  
 Delta R.T. -0.000 min  
 Lab File: VV028836.D  
 Acq: 02 Nov 2022 13:08

Tgt Ion: 96 Resp: 5616  
 Ion Ratio Lower Upper  
 96 100  
 61 477.2 142.7 265.1#  
 63 2791.0 112.5 208.9#

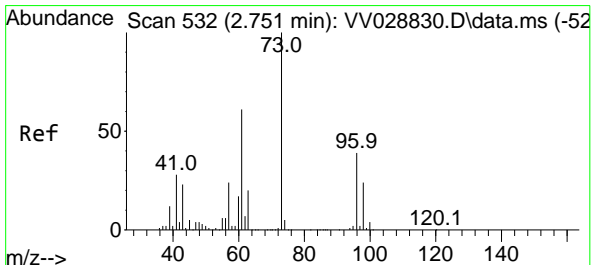
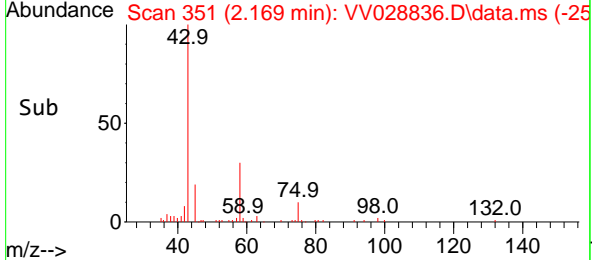
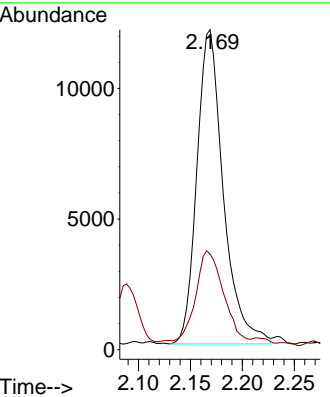
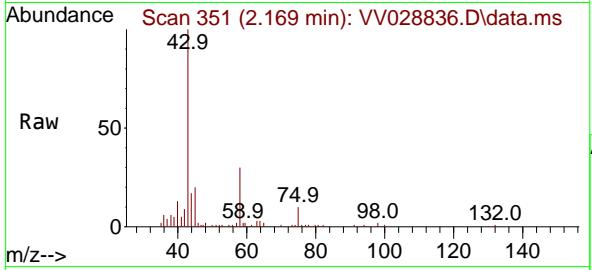




#13  
 Acetone  
 Concen: 7.609 ug/L  
 RT: 2.169 min Scan# 31  
 Delta R.T. 0.003 min  
 Lab File: VV028836.D  
 Acq: 02 Nov 2022 13:08

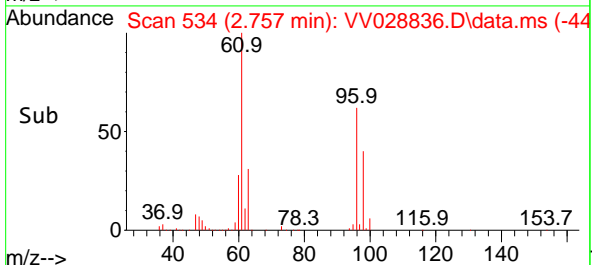
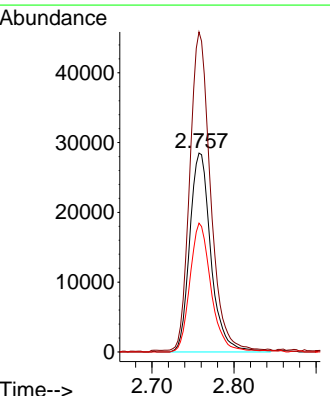
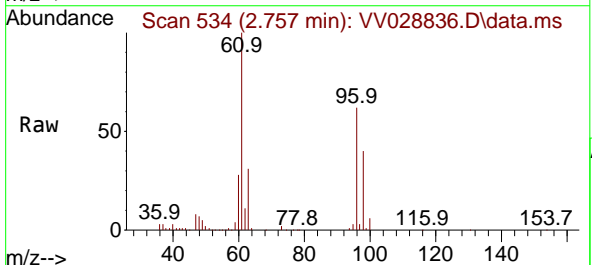
Instrument : MSVOA\_V  
 ClientSampleId : DBWN7

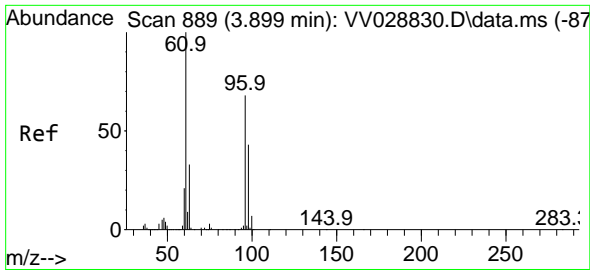
Tgt Ion: 43 Resp: 21309  
 Ion Ratio Lower Upper  
 43 100  
 58 29.8 0.0 59.0



#17  
 trans-1,2-Dichloroethene  
 Concen: 16.909 ug/L  
 RT: 2.757 min Scan# 534  
 Delta R.T. 0.003 min  
 Lab File: VV028836.D  
 Acq: 02 Nov 2022 13:08

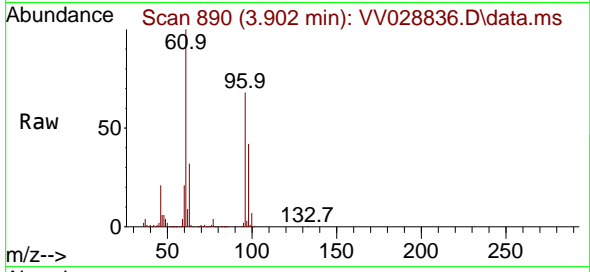
Tgt Ion: 96 Resp: 51131  
 Ion Ratio Lower Upper  
 96 100  
 61 160.9 109.4 203.2  
 98 64.8 43.3 80.5



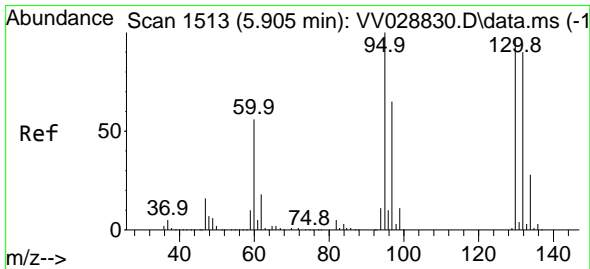
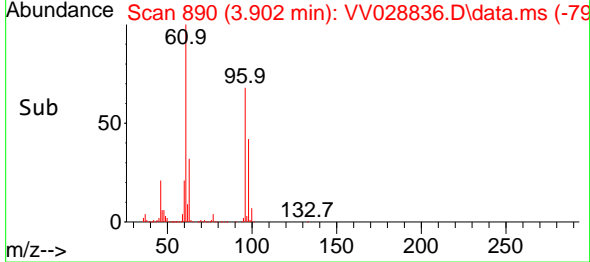
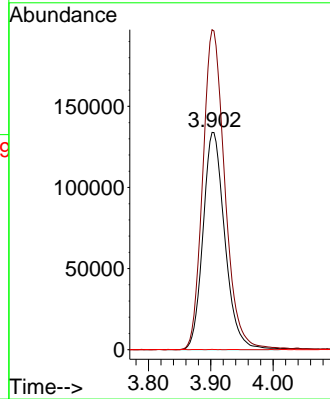


#20  
 cis-1,2-Dichloroethene  
 Concen: 97.562 ug/L  
 RT: 3.902 min Scan# 890  
 Delta R.T. -0.000 min  
 Lab File: VV028836.D  
 Acq: 02 Nov 2022 13:08

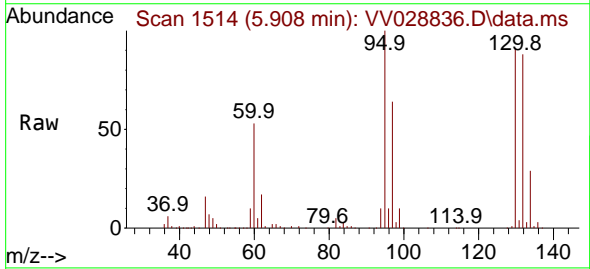
Instrument : MSVOA\_V  
 ClientSampleId : DBWN7



Tgt Ion: 96 Resp: 325506  
 Ion Ratio Lower Upper  
 96 100  
 61 147.3 102.3 190.1  
 68 0.2 0.1 0.3



#34  
 Trichloroethene  
 Concen: 63.835 ug/L  
 RT: 5.908 min Scan# 1514  
 Delta R.T. -0.000 min  
 Lab File: VV028836.D  
 Acq: 02 Nov 2022 13:08



Tgt Ion: 95 Resp: 199879  
 Ion Ratio Lower Upper  
 95 100  
 97 63.8 46.2 85.8  
 132 87.9 63.2 117.4  
 130 91.0 66.2 123.0

