

Data Path : Z:\VOASRV\HPCHEM1\MSVOA V\DATA\VV110320\
 Data File : VV019224.D
 Acq On : 03 Nov 2020 02:27
 Operator : SY/MD
 Sample : L4485-09
 Misc : 5.0mL/MSVOA V/WATER
 ALS Vial : 25 Sample Multiplier: 1

Instrument :
 MSVOA_V
 ClientSampleId :
 MDL-WATER-02

Quant Time: Nov 03 05:31:22 2020
 Quant Method : Z:\VOASRV\HPCHEM1\MSVOA_V\METHOD\SFAMVLM110320WMA.M
 Quant Title : VOC Analysis
 QLast Update : Tue Nov 03 05:28:09 2020
 Response via : Initial Calibration

Internal Standards	R.T.	QIon	Response	Conc	Units	Dev(Min)
1) 1,4-Difluorobenzene	5.64	114	243075	50.00	ug/L	0.00
28) Chlorobenzene-d5	8.87	117	232454	50.00	ug/L	0.00
58) 1,4-Dichlorobenzene-d4	11.27	152	118616	50.00	ug/L	0.00

System Monitoring Compounds

4) Vinyl Chloride-d3	1.32	65	91879	48.98	ug/L	0.00
Spiked Amount	50.000	Range	60 - 135	Recovery	=	97.96%
7) Chloroethane-d5	1.58	69	76637	52.14	ug/L	0.00
Spiked Amount	50.000	Range	70 - 130	Recovery	=	104.28%
11) 1,1-Dichloroethene-d2	2.12	63	144555	41.62	ug/L	0.00
Spiked Amount	50.000	Range	60 - 125	Recovery	=	83.24%
21) 2-Butanone-d5	3.91	46	113605	109.83	ug/L	0.00
Spiked Amount	100.000	Range	40 - 130	Recovery	=	109.83%
24) Chloroform-d	4.38	84	173596	49.45	ug/L	0.00
Spiked Amount	50.000	Range	70 - 125	Recovery	=	98.90%
26) 1,2-Dichloroethane-d4	5.06	65	122134	49.93	ug/L	0.00
Spiked Amount	50.000	Range	70 - 125	Recovery	=	99.86%
32) Benzene-d6	5.07	84	333421	51.95	ug/L	0.00
Spiked Amount	50.000	Range	70 - 125	Recovery	=	103.90%
36) 1,2-Dichloropropane-d6	6.09	67	101596	53.01	ug/L	0.00
Spiked Amount	50.000	Range	70 - 120	Recovery	=	106.02%
41) Toluene-d8	7.34	98	302145	50.53	ug/L	0.00
Spiked Amount	50.000	Range	80 - 120	Recovery	=	101.06%
43) trans-1,3-Dichloropropene-	7.64	79	53053	48.89	ug/L	0.00
Spiked Amount	50.000	Range	60 - 125	Recovery	=	97.78%
47) 2-Hexanone-d5	8.11	63	74231	99.78	ug/L	0.00
Spiked Amount	100.000	Range	45 - 130	Recovery	=	99.78%
56) 1,1,2,2-Tetrachloroethane-	10.23	84	122177	47.85	ug/L	0.00
Spiked Amount	50.000	Range	65 - 120	Recovery	=	95.70%
66) 1,2-Dichlorobenzene-d4	11.65	152	124560	52.49	ug/L	0.00
Spiked Amount	50.000	Range	80 - 120	Recovery	=	104.98%

Target Compounds

Target Compounds	R.T.	QIon	Response	Conc	Units	Ovalue
2) Dichlorodifluoromethane	1.14	85	3704	2.487	ug/L	100
3) Chloromethane	1.25	50	4173	2.691	ug/L	95
5) Vinyl chloride	1.32	62	4441	2.751	ug/L #	58
6) Bromomethane	1.53	94	3312	3.053	ug/L	95
8) Chloroethane	1.60	64	3154	2.988	ug/L	99
9) Trichlorofluoromethane	1.77	101	6961	2.605	ug/L	98
10) 1,1,2-Trichloro-1,2,2-trif	2.13	101	4739	3.733	ug/L #	79
12) 1,1-Dichloroethene	2.13	96	4525	3.448	ug/L #	1
13) Acetone	2.20	43	4631	5.887	ug/L	97
14) Carbon disulfide	2.31	76	9942	2.638	ug/L	100
15) Methyl Acetate	2.46	43	4103	2.692	ug/L #	80
16) Methylene chloride	2.53	84	4722	3.027	ug/L	96
17) trans-1,2-Dichloroethene	2.78	96	3880	2.726	ug/L	92
18) Methyl tert-butyl Ether	2.78	73	12999	2.598	ug/L	98
19) 1,1-Dichloroethane	3.22	63	7311	2.621	ug/L	95
20) cis-1,2-Dichloroethene	3.95	96	4023	2.557	ug/L	94
22) 2-Butanone	4.02	43	2108	2.111	ug/L	82

Data Path : Z:\VOASRV\HPCHEM1\MSVOA V\DATA\VV110320\
 Data File : VV019224.D
 Acq On : 03 Nov 2020 02:27
 Operator : SY/MD
 Sample : L4485-09
 Misc : 5.0mL/MSVOA V/WATER
 ALS Vial : 25 Sample Multiplier: 1

Instrument :
 MSVOA_V
 ClientSampleId :
 MDL-WATER-02

Quant Time: Nov 03 05:31:22 2020
 Quant Method : Z:\VOASRV\HPCHEM1\MSVOA_V\METHOD\SFAMVLM110320WMA.M
 Quant Title : VOC Analysis
 QLast Update : Tue Nov 03 05:28:09 2020
 Response via : Initial Calibration

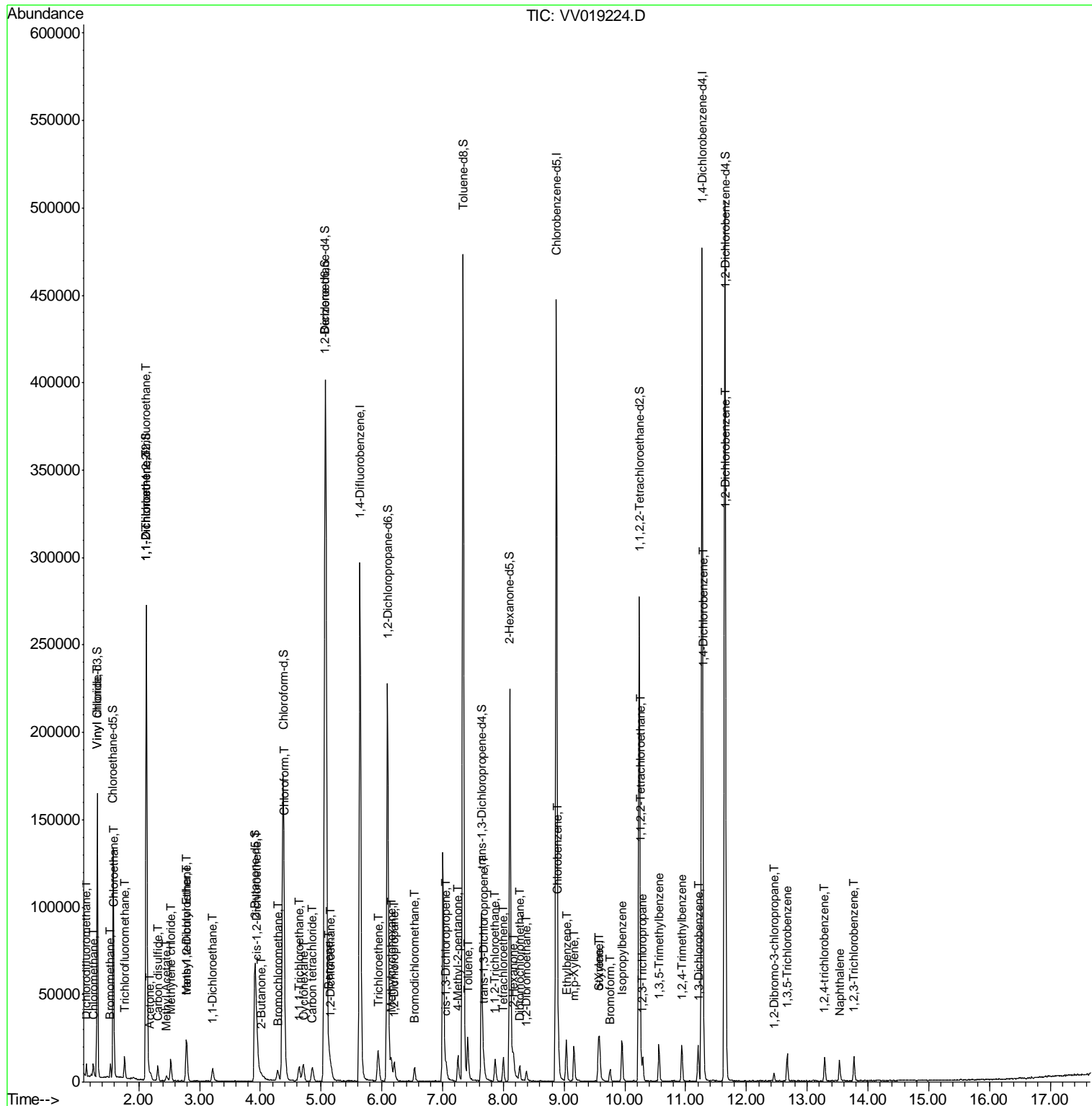
Internal Standards	R.T.	QIon	Response	Conc	Units	Dev(Min)
23) Bromochloromethane	4.29	128	2209	2.550	ug/L #	91
25) Chloroform	4.40	83	9104	3.044	ug/L	99
27) 1,2-Dichloroethane	5.17	62	6255	2.461	ug/L #	93
29) Cyclohexane	4.71	56	5105	2.566	ug/L #	89
30) 1,1,1-Trichloroethane	4.63	97	6828	2.533	ug/L	97
31) Carbon tetrachloride	4.86	117	5827	2.503	ug/L	96
33) Benzene	5.13	78	15212	2.633	ug/L	100
34) Trichloroethene	5.94	95	4303	2.741	ug/L	90
35) Methylcyclohexane	6.16	83	4771	2.511	ug/L	100
37) 1,2-Dichloropropane	6.20	63	4204	2.727	ug/L #	89
38) Bromodichloromethane	6.54	83	5416	2.441	ug/L #	94
39) cis-1,3-Dichloropropene	7.06	75	5200	2.108	ug/L	97
40) 4-Methyl-2-pentanone	7.25	43	9713	4.690	ug/L	98
42) Toluene	7.41	91	17080	2.735	ug/L	100
44) trans-1,3-Dichloropropene	7.68	75	8707	3.444	ug/L	89
45) 1,1,2-Trichloroethane	7.87	97	3856	2.530	ug/L	94
46) Tetrachloroethene	8.00	164	3140	2.451	ug/L	98
48) 2-Hexanone	8.16	43	9597	6.129	ug/L	97
49) Dibromochloromethane	8.27	129	4236	2.331	ug/L	100
50) 1,2-Dibromoethane	8.38	107	3983	2.522	ug/L #	97
51) Chlorobenzene	8.90	112	10507	2.516	ug/L	96
52) Ethylbenzene	9.04	91	16307	2.367	ug/L	98
53) m,p-Xylene	9.16	106	5882	2.281	ug/L	94
54) o-Xylene	9.57	106	5741	2.258	ug/L	89
55) Styrene	9.59	104	9658	2.134	ug/L	95
57) 1,1,2,2-Tetrachloroethane	10.26	83	6651	2.885	ug/L #	95
59) Bromoform	9.76	173	3382	2.569	ug/L #	94
60) Isopropylbenzene	9.95	105	14933	2.402	ug/L	98
61) 1,2,3-Trichloropropane	10.30	75	4957	2.690	ug/L	94
62) 1,3,5-Trimethylbenzene	10.56	105	11966	2.311	ug/L	99
63) 1,2,4-Trimethylbenzene	10.94	105	11304	2.231	ug/L	99
64) 1,3-Dichlorobenzene	11.21	146	8325	2.560	ug/L	98
65) 1,4-Dichlorobenzene	11.29	146	8890	2.642	ug/L	98
67) 1,2-Dichlorobenzene	11.67	146	8751	2.630	ug/L	99
68) 1,2-Dibromo-3-chloropropan	12.45	75	1197	2.227	ug/L	93
69) 1,3,5-Trichlorobenzene	12.67	180	5737	2.458	ug/L	95
70) 1,2,4-trichlorobenzene	13.29	180	4765	2.170	ug/L	99
71) Naphthalene	13.53	128	10218	1.650	ug/L	99
72) 1,2,3-Trichlorobenzene	13.77	180	4525	2.079	ug/L	99

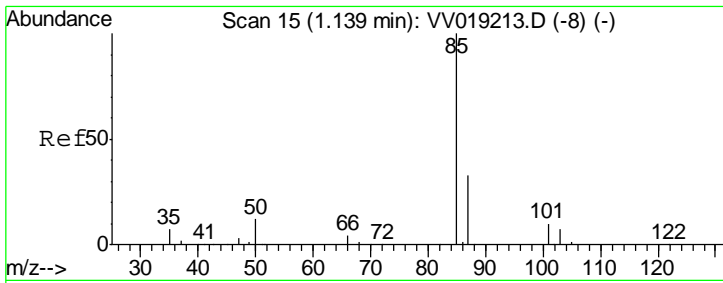
(#) = qualifier out of range (m) = manual integration (+) = signals summed

Data Path : Z:\VOASRV\HPCHEM1\MSVOA V\DATA\VV110320\
 Data File : VV019224.D
 Acq On : 03 Nov 2020 02:27
 Operator : SY/MD
 Sample : L4485-09
 Misc : 5.0mL/MSVOA V/WATER
 ALS Vial : 25 Sample Multiplier: 1

Instrument :
 MSVOA_V
 Client Sampled :
 MDL-WATER-02

Quant Time: Nov 03 05:31:22 2020
 Quant Method : Z:\VOASRV\HPCHEM1\MSVOA_V\METHOD\SFAMVLM110320WMA.M
 Quant Title : VOC Analysis
 QLast Update : Tue Nov 03 05:28:09 2020
 Response via : Initial Calibration

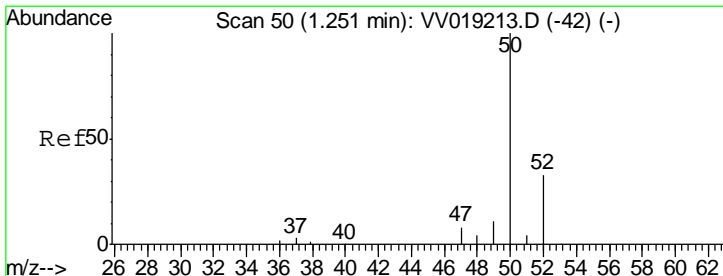
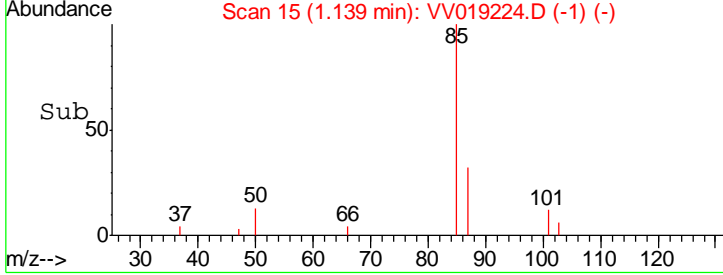
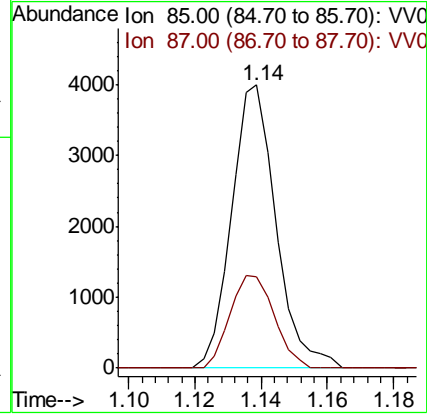
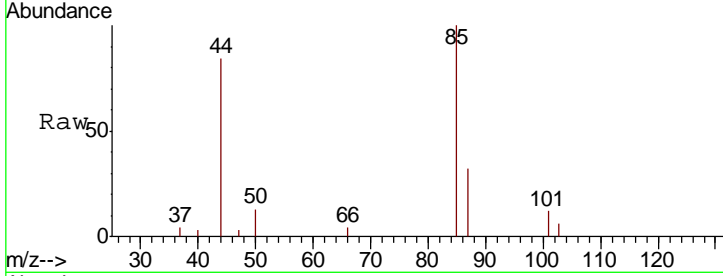




#2
 Dichlorodifluoromethane
 Concen: 2.487 ug/L
 RT: 1.14 min Scan# 15
 Delta R.T. 0.00 min
 Lab File: VV019224.D
 Acq: 03 Nov 2020 02:27

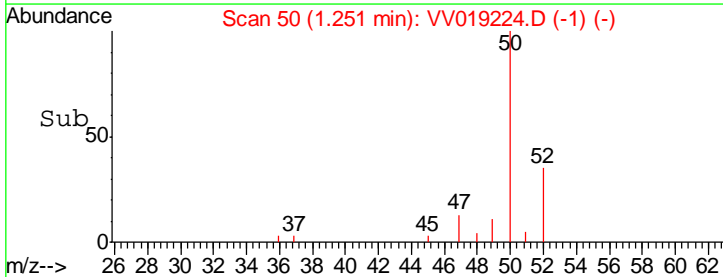
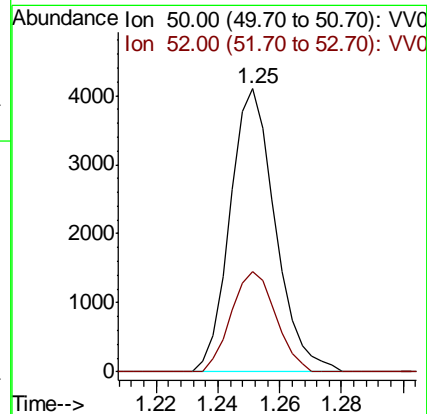
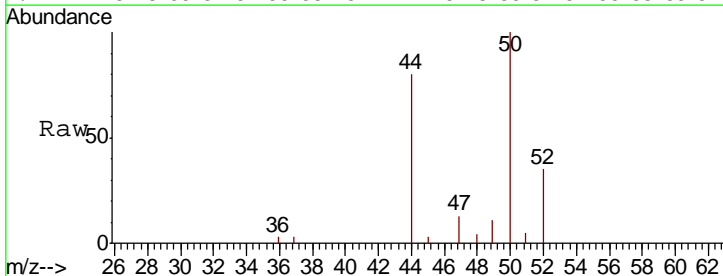
Instrument : MSVOA_V
 ClientSampled : MDL-WATER-02

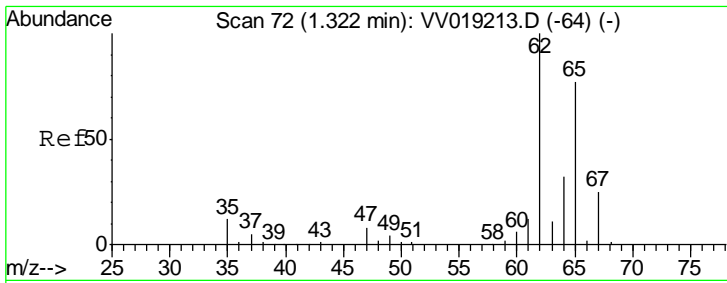
Tgt Ion	Resp	Lower	Upper
85	3704		
87	32.7	25.9	38.9



#3
 Chloromethane
 Concen: 2.691 ug/L
 RT: 1.25 min Scan# 50
 Delta R.T. 0.00 min
 Lab File: VV019224.D
 Acq: 03 Nov 2020 02:27

Tgt Ion	Resp	Lower	Upper
50	4173		
52	35.4	23.0	42.6

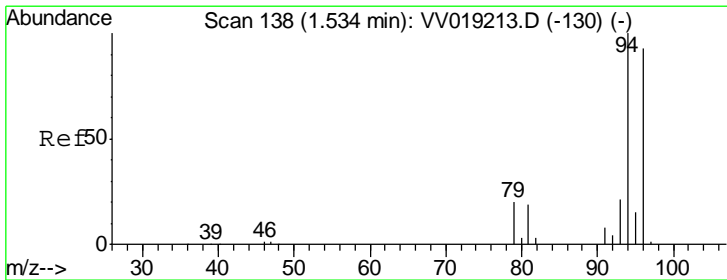
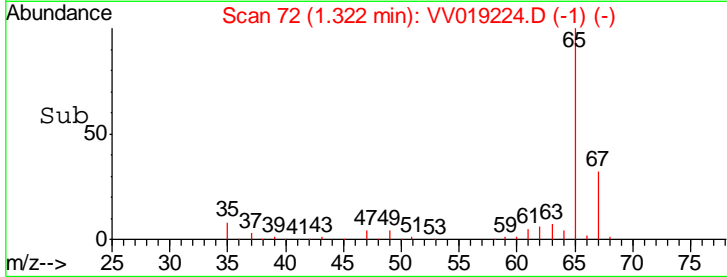
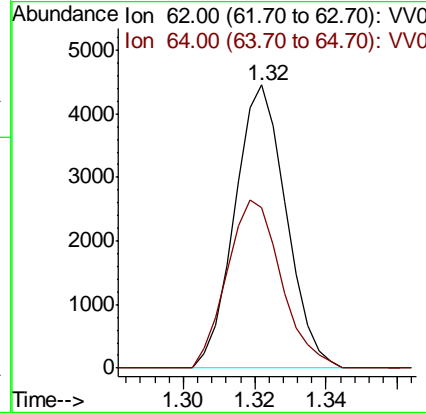
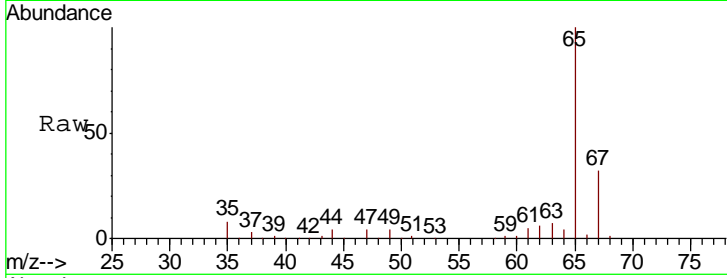




#5
 Vinyl chloride
 Concen: 2.751 ug/L
 RT: 1.32 min Scan# 72
 Delta R.T. 0.00 min
 Lab File: VV019224.D
 Acq: 03 Nov 2020 02:27

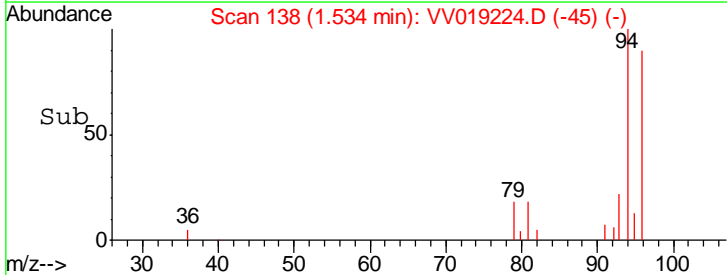
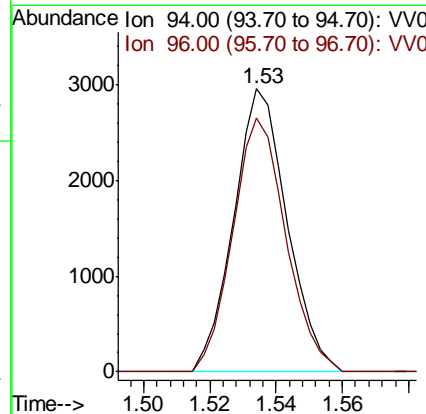
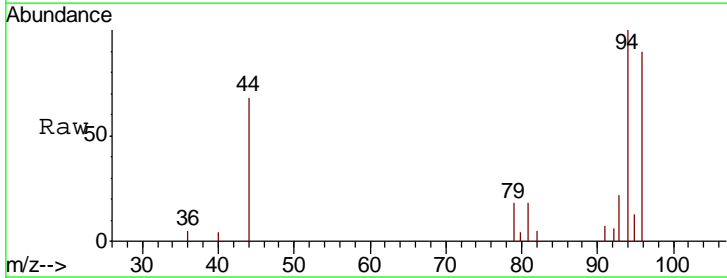
Instrument : MSVOA_V
 ClientSampleID : MDL-WATER-02

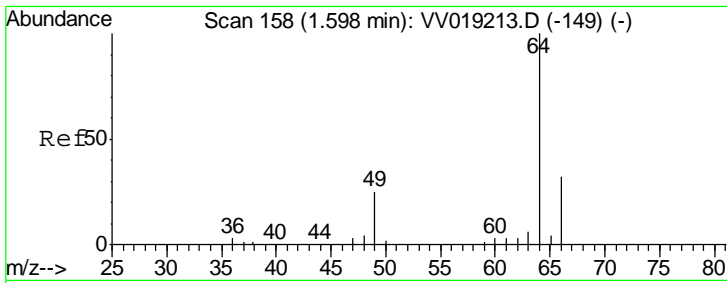
Tgt Ion	Resp	Lower	Upper
62	4441		
64	56.9	23.3	43.3#



#6
 Bromomethane
 Concen: 3.053 ug/L
 RT: 1.53 min Scan# 138
 Delta R.T. 0.00 min
 Lab File: VV019224.D
 Acq: 03 Nov 2020 02:27

Tgt Ion	Resp	Lower	Upper
94	3312		
96	89.5	66.4	123.2



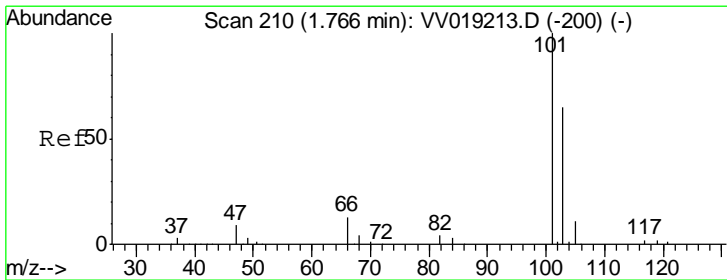
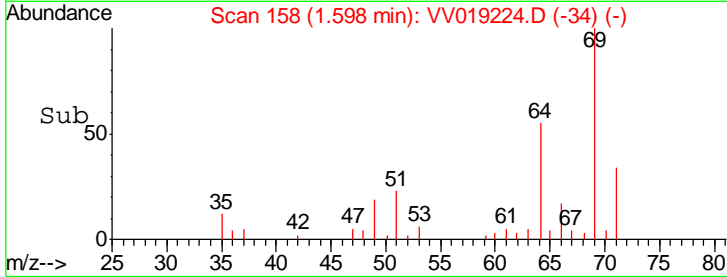
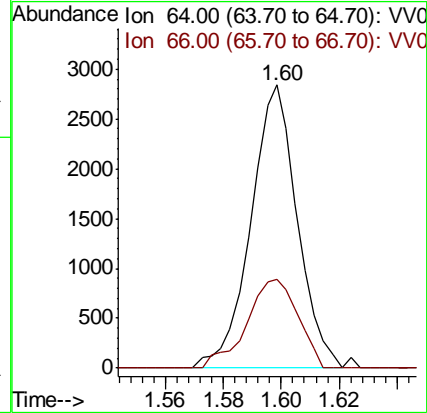
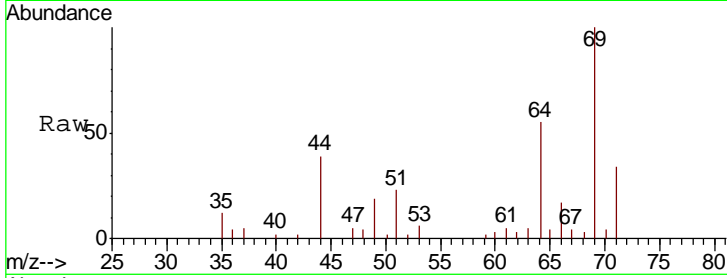


#8
 Chloroethane
 Concen: 2.988 ug/L
 RT: 1.60 min Scan# 158
 Delta R.T. 0.00 min
 Lab File: VV019224.D
 Acq: 03 Nov 2020 02:27

Instrument :
 MSVOA_V
 ClientSampled :
 MDL-WATER-02

Tgt Ion: 64 Resp: 3154

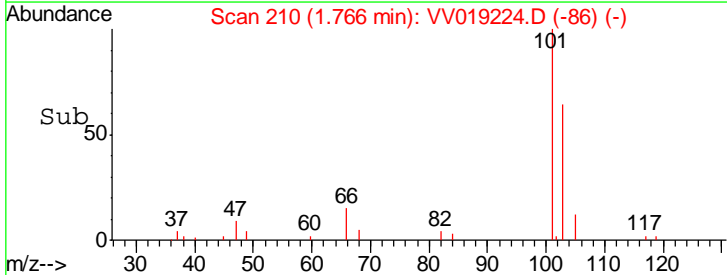
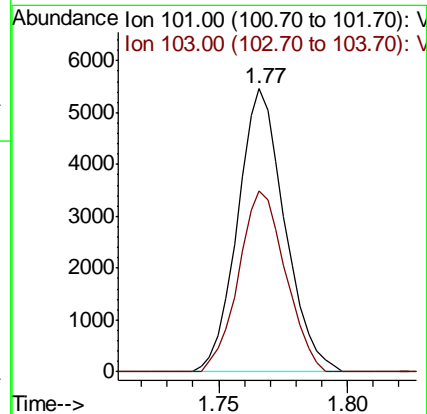
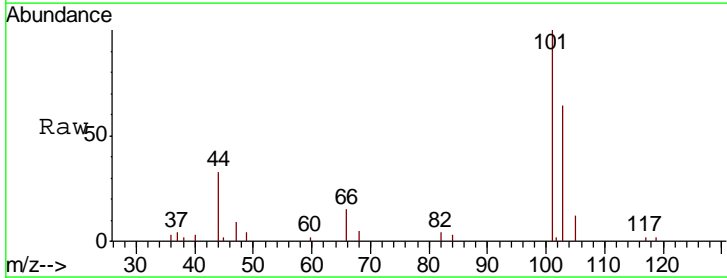
Ion	Ratio	Lower	Upper
64	100		
66	31.5	22.5	41.9

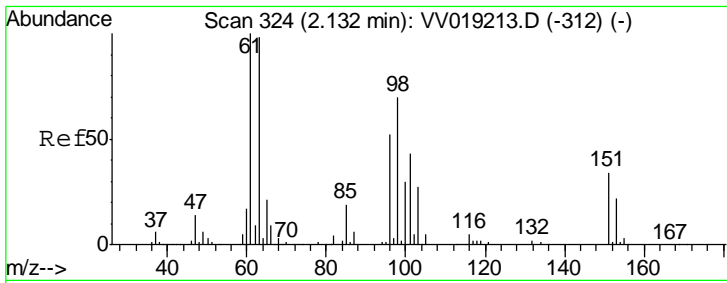


#9
 Trichlorofluoromethane
 Concen: 2.605 ug/L
 RT: 1.77 min Scan# 210
 Delta R.T. 0.00 min
 Lab File: VV019224.D
 Acq: 03 Nov 2020 02:27

Tgt Ion: 101 Resp: 6961

Ion	Ratio	Lower	Upper
101	100		
103	63.7	52.3	78.5





#10

1,1,2-Trichloro-1,2,2-trifluoroethane

Concen: 3.733 ug/L

RT: 2.13 min Scan# 323

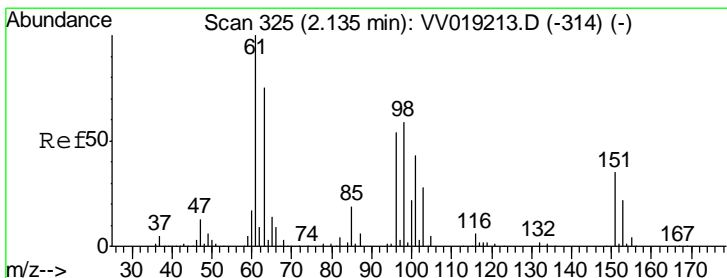
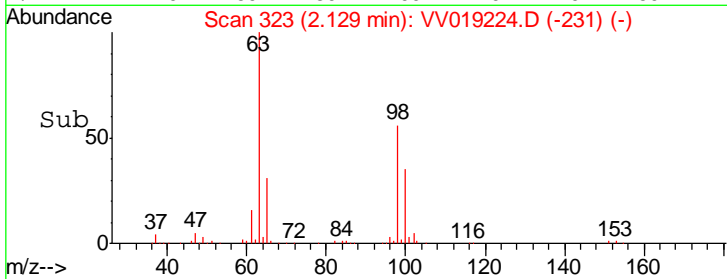
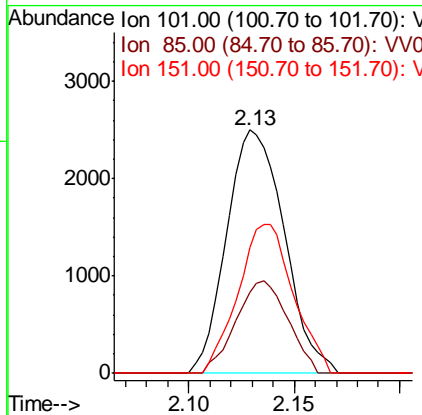
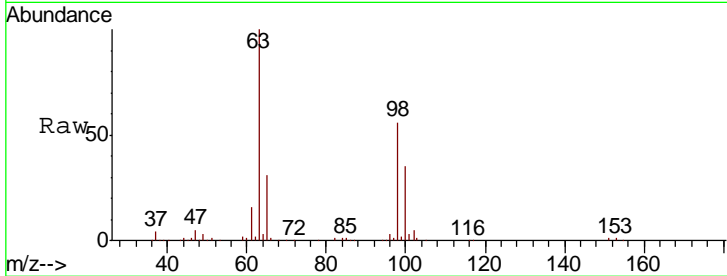
Delta R.T. -0.00 min

Lab File: VV019224.D

Acq: 03 Nov 2020 02:27

Instrument :
MSVOA_V
ClientSampled :
MDL-WATER-02

Tgt Ion	Resp	Lower	Upper
101	100		
85	34.2	35.6	53.4#
151	58.7	64.1	96.1#



#12

1,1-Dichloroethene

Concen: 3.448 ug/L

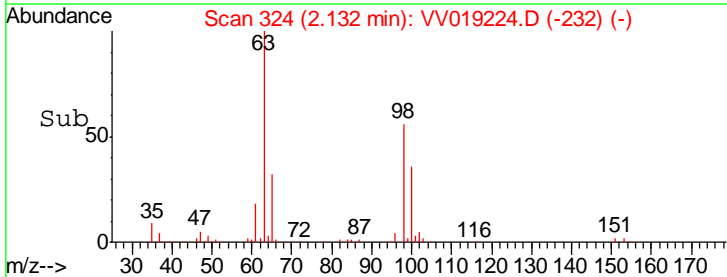
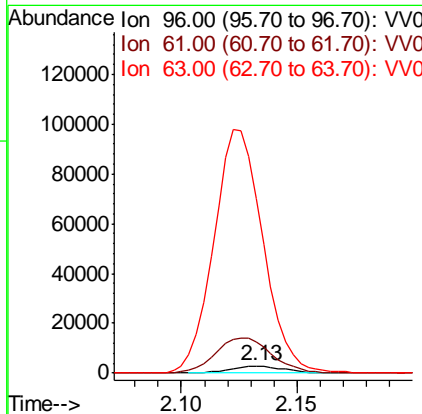
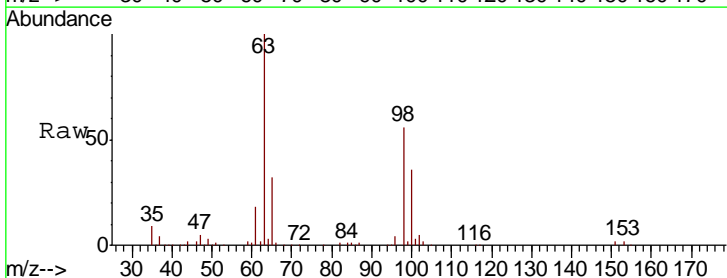
RT: 2.13 min Scan# 324

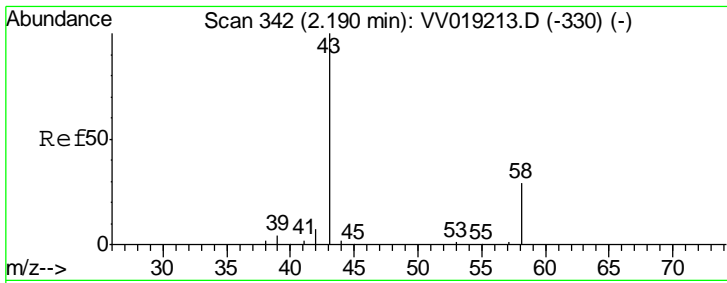
Delta R.T. -0.00 min

Lab File: VV019224.D

Acq: 03 Nov 2020 02:27

Tgt Ion	Resp	Lower	Upper
96	100		
61	437.5	133.6	248.0#
63	2446.5	103.0	191.2#

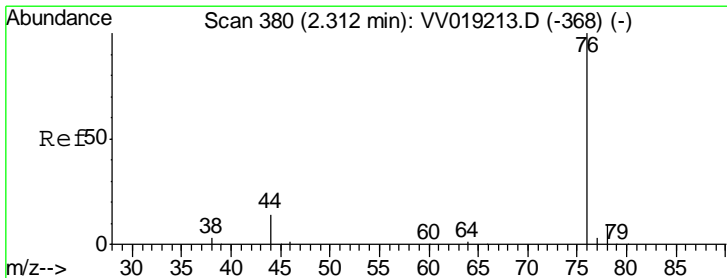
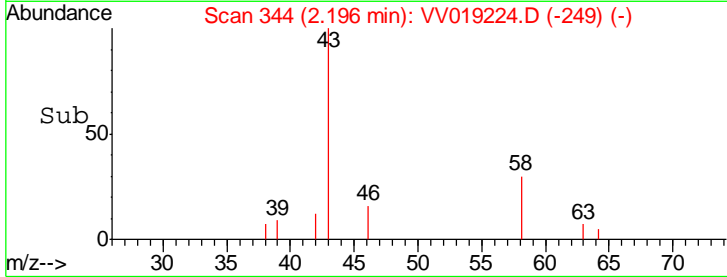
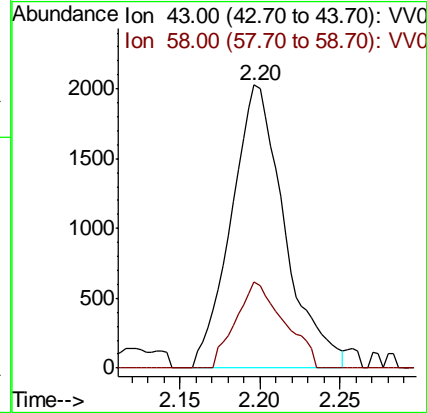
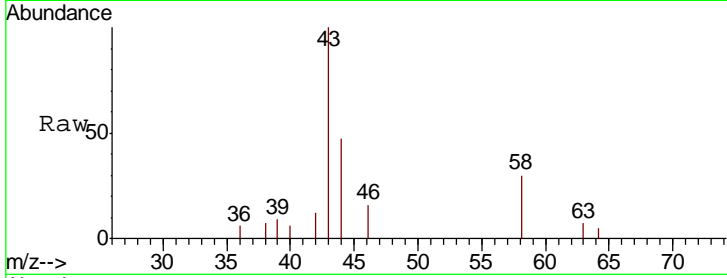




#13
 Acetone
 Concen: 5.887 ug/L
 RT: 2.20 min Scan# 344
 Delta R.T. 0.01 min
 Lab File: VV019224.D
 Acq: 03 Nov 2020 02:27

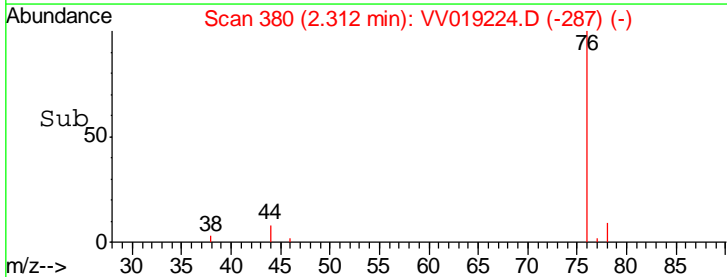
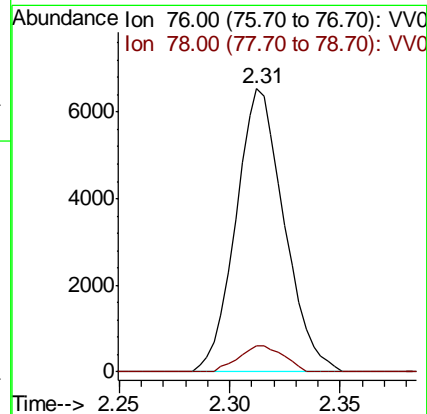
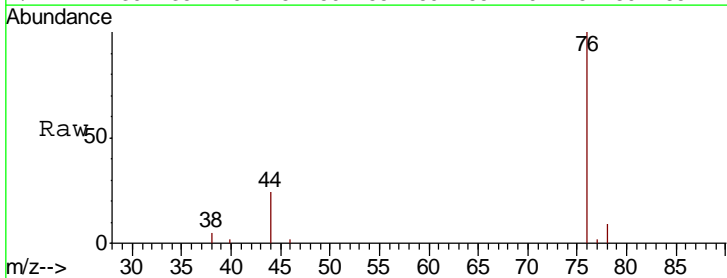
Instrument :
 MSVOA_V
 ClientSampled :
 MDL-WATER-02

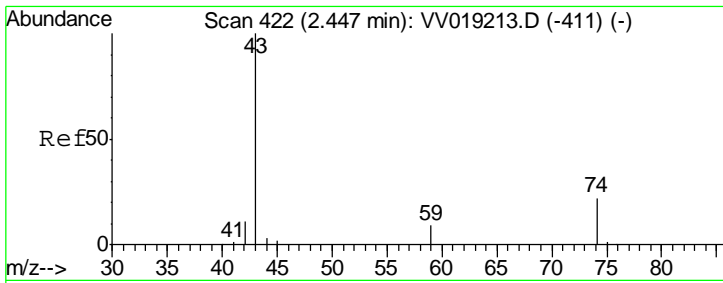
Tgt Ion	Resp	Lower	Upper
43	100		
58	27.5	0.0	57.8



#14
 Carbon disulfide
 Concen: 2.638 ug/L
 RT: 2.31 min Scan# 380
 Delta R.T. 0.00 min
 Lab File: VV019224.D
 Acq: 03 Nov 2020 02:27

Tgt Ion	Resp	Lower	Upper
76	100		
78	9.4	7.4	11.0

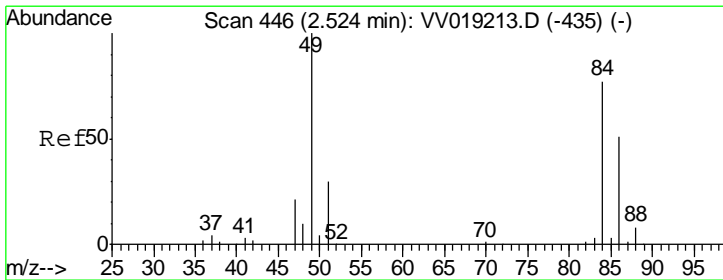
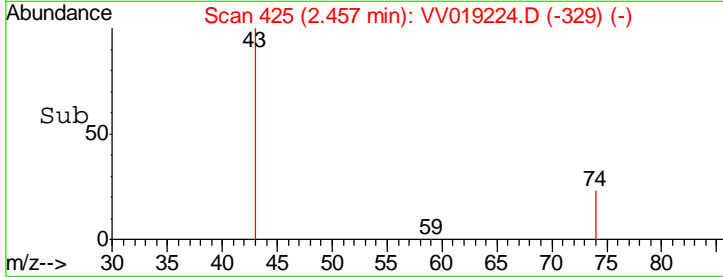
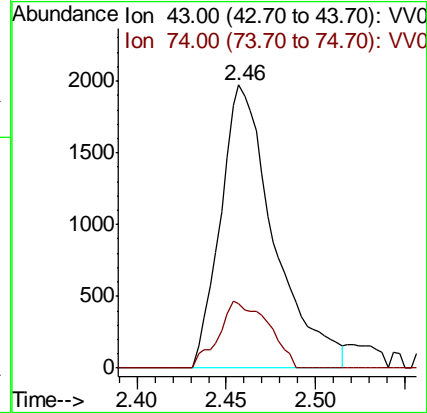
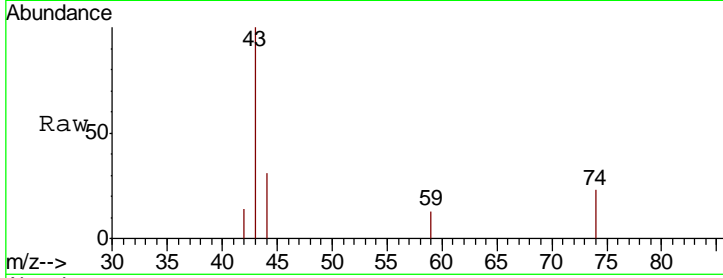




#15
Methyl Acetate
Concen: 2.692 ug/L
RT: 2.46 min Scan# 425
Delta R.T. 0.01 min
Lab File: VV019224.D
Acq: 03 Nov 2020 02:27

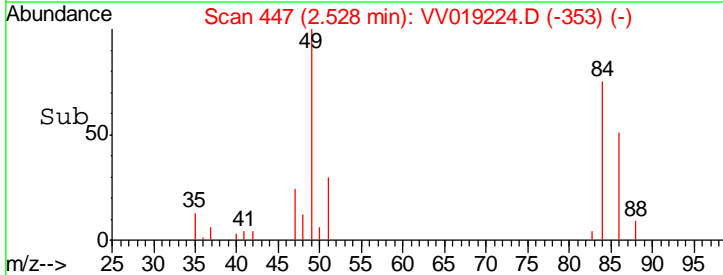
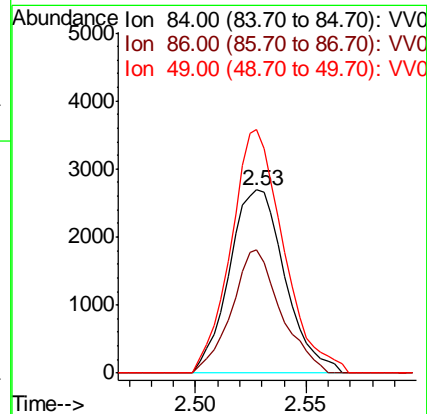
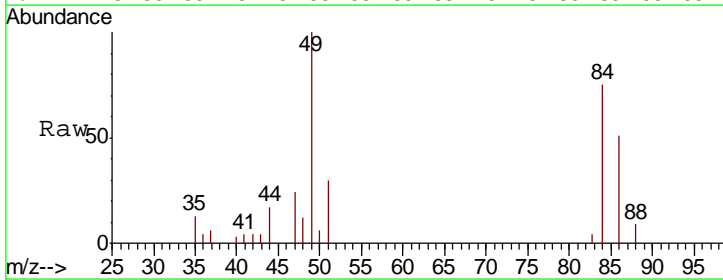
Instrument :
MSVOA_V
ClientSampled :
MDL-WATER-02

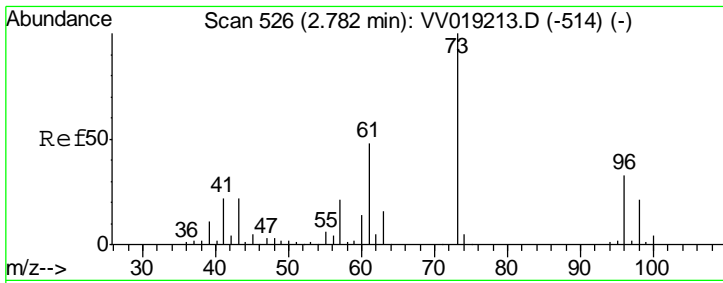
Tgt Ion	Resp	Lower	Upper
43	4103		
74	13.6	18.8	28.2#



#16
Methylene chloride
Concen: 3.027 ug/L
RT: 2.53 min Scan# 447
Delta R.T. 0.00 min
Lab File: VV019224.D
Acq: 03 Nov 2020 02:27

Tgt Ion	Resp	Lower	Upper
84	4722		
86	67.3	45.6	84.8
49	133.1	89.3	165.9

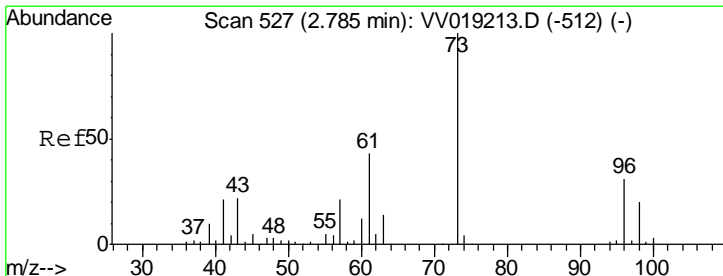
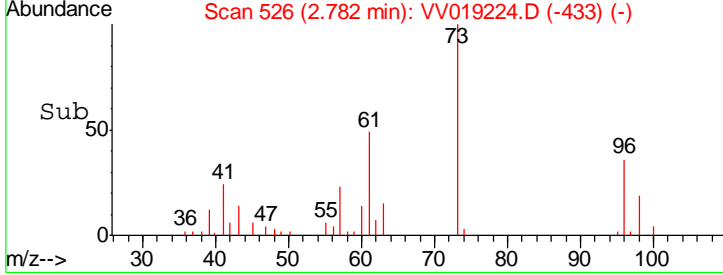
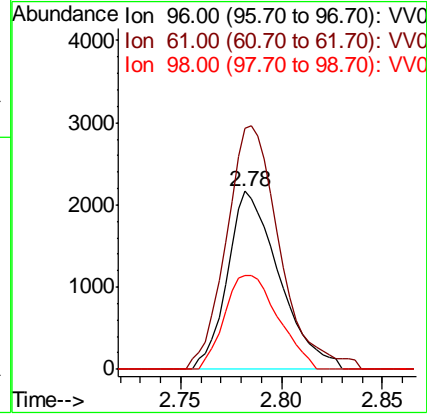
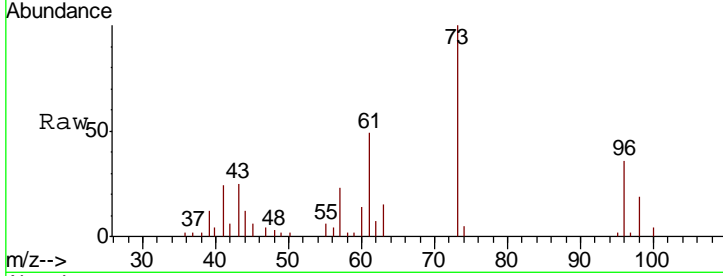




#17
 trans-1,2-Dichloroethene
 Concen: 2.726 ug/L
 RT: 2.78 min Scan# 526
 Delta R.T. 0.00 min
 Lab File: VV019224.D
 Acq: 03 Nov 2020 02:27

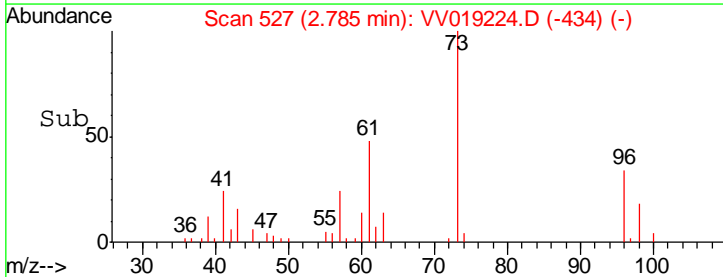
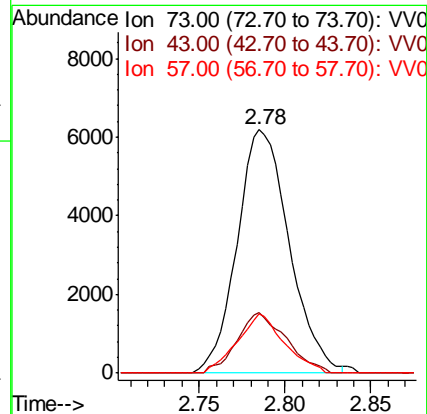
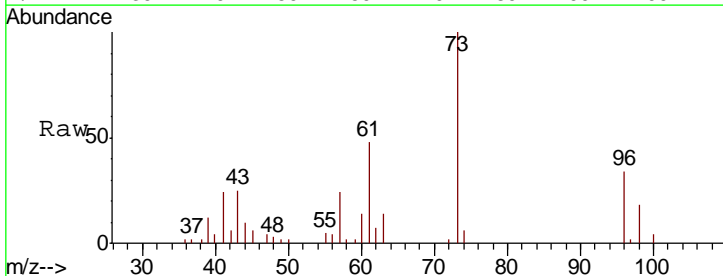
Instrument :
 MSVOA_V
ClientSampled :
 MDL-WATER-02

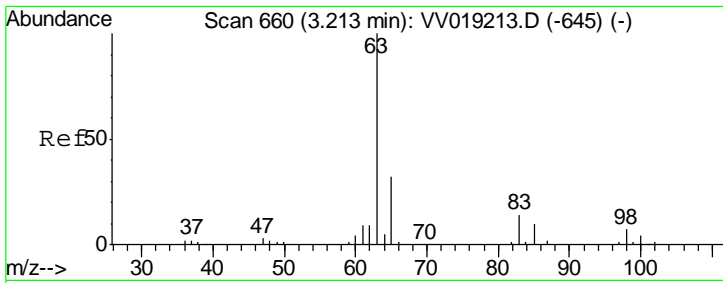
Tgt Ion	Resp	Lower	Upper
96	3880		
96	100		
61	135.4	100.7	187.1
98	52.5	42.9	79.7



#18
 Methyl tert-butyl Ether
 Concen: 2.598 ug/L
 RT: 2.78 min Scan# 527
 Delta R.T. 0.00 min
 Lab File: VV019224.D
 Acq: 03 Nov 2020 02:27

Tgt Ion	Resp	Lower	Upper
73	12999		
73	100		
43	23.4	17.9	26.9
57	21.9	17.1	25.7

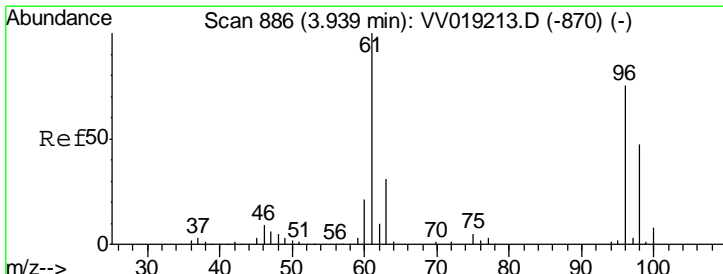
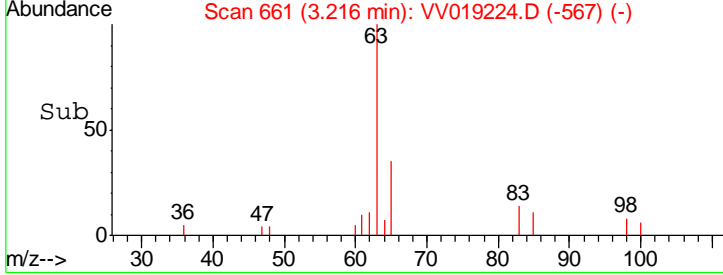
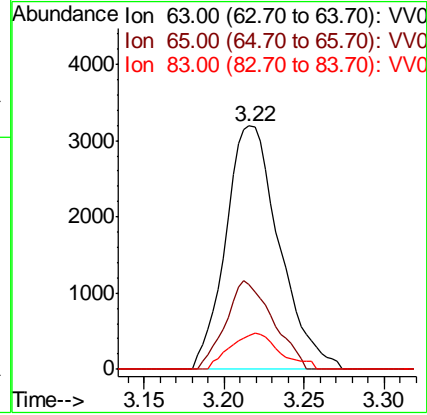
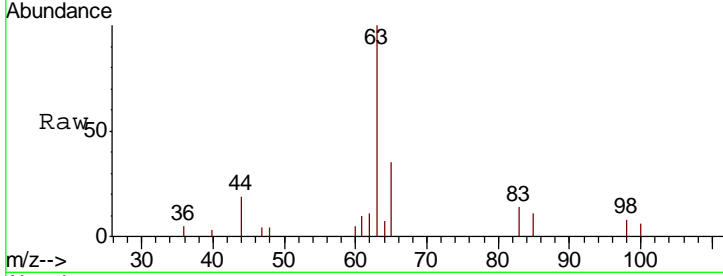




#19
 1,1-Dichloroethane
 Concen: 2.621 ug/L
 RT: 3.22 min Scan# 661
 Delta R.T. 0.00 min
 Lab File: VV019224.D
 Acq: 03 Nov 2020 02:27

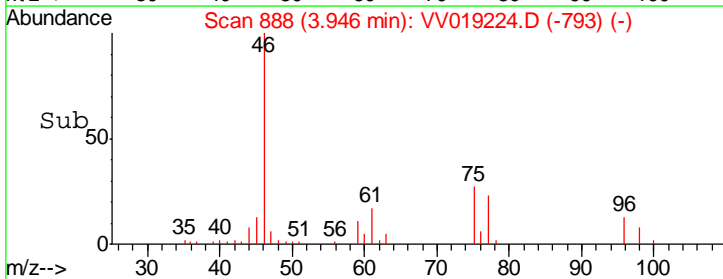
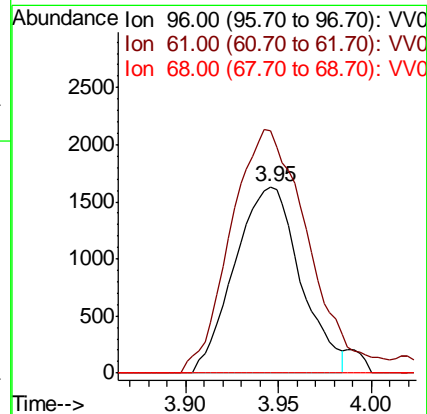
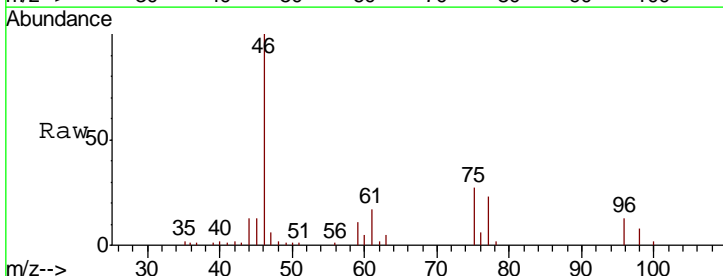
Instrument :
 MSVOA_V
 ClientSampled :
 MDL-WATER-02

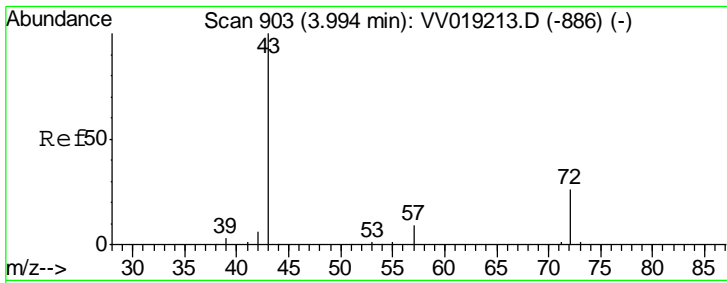
Tgt Ion	Resp	Lower	Upper
63	7311		
65	34.7	21.8	40.6
83	13.9	9.5	17.7



#20
 cis-1,2-Dichloroethene
 Concen: 2.557 ug/L
 RT: 3.95 min Scan# 888
 Delta R.T. 0.01 min
 Lab File: VV019224.D
 Acq: 03 Nov 2020 02:27

Tgt Ion	Resp	Lower	Upper
96	4023		
61	129.9	95.6	177.6
68	0.0	0.0	0.0

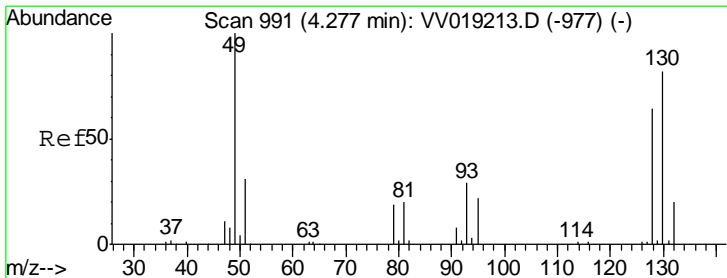
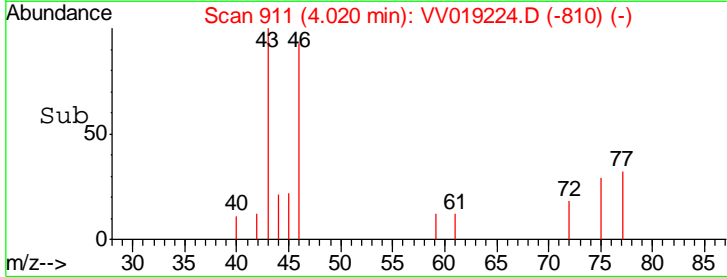
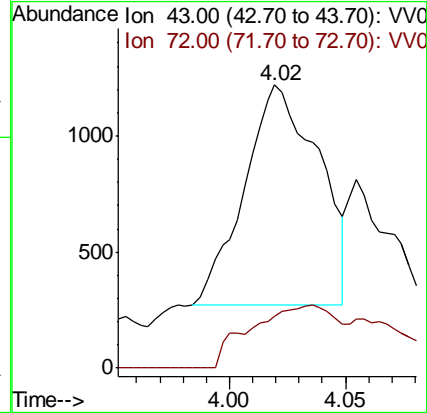
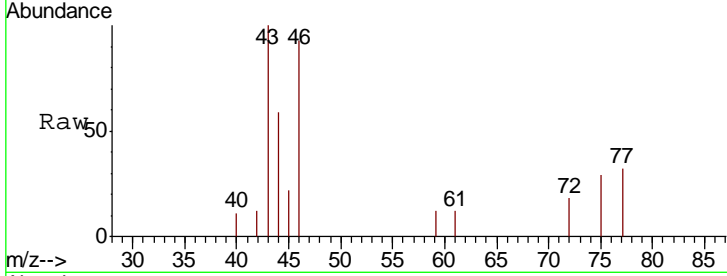




#22
 2-Butanone
 Concen: 2.111 ug/L
 RT: 4.02 min Scan# 911
 Delta R.T. 0.03 min
 Lab File: VV019224.D
 Acq: 03 Nov 2020 02:27

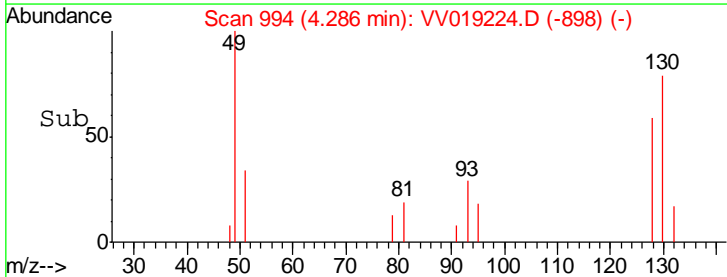
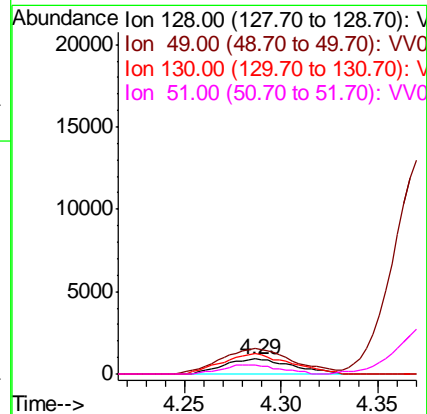
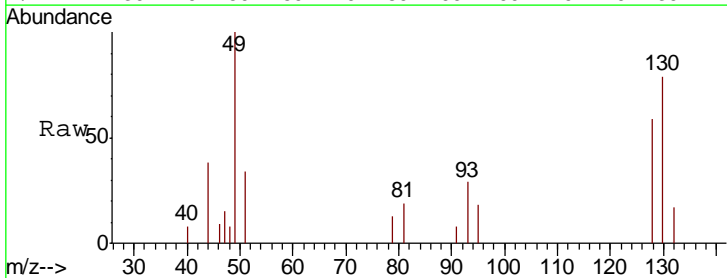
Instrument :
 MSVOA_V
 ClientSampled :
 MDL-WATER-02

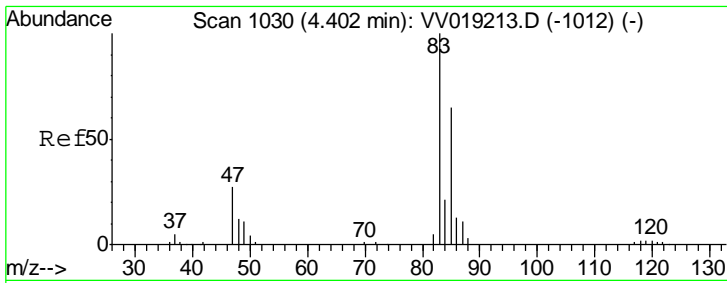
Tgt Ion	Resp	Lower	Upper
43	100		
72	16.1	12.7	38.0



#23
 Bromochloromethane
 Concen: 2.550 ug/L
 RT: 4.29 min Scan# 994
 Delta R.T. 0.01 min
 Lab File: VV019224.D
 Acq: 03 Nov 2020 02:27

Tgt Ion	Resp	Lower	Upper
128	100		
49	168.8	108.8	202.2
130	133.5	88.5	164.3
51	56.7	37.8	56.6#

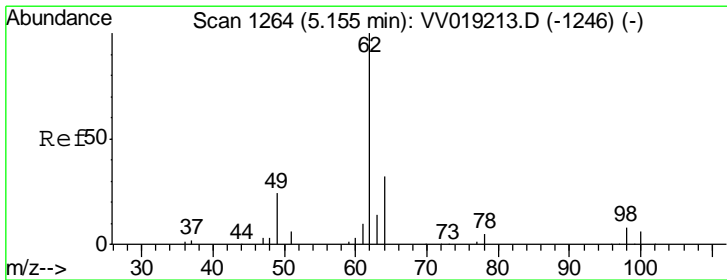
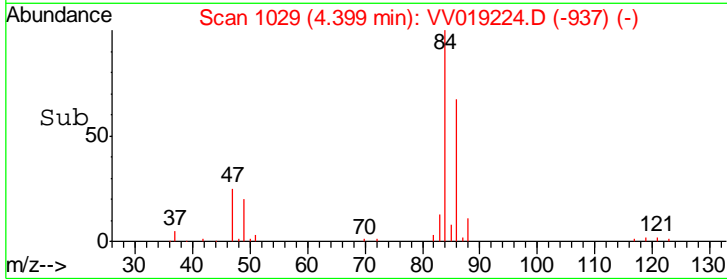
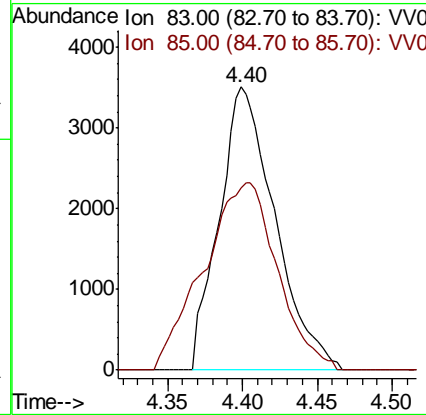
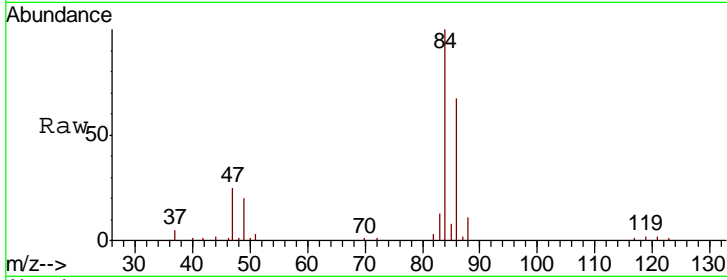




#25
 Chloroform
 Concen: 3.044 ug/L
 RT: 4.40 min Scan# 1029
 Delta R.T. -0.00 min
 Lab File: VV019224.D
 Acq: 03 Nov 2020 02:27

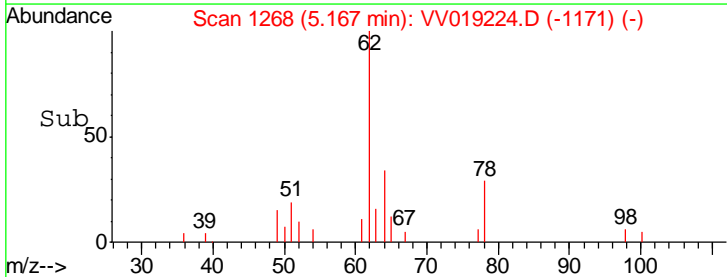
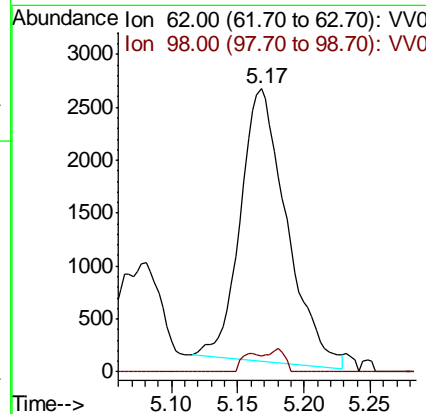
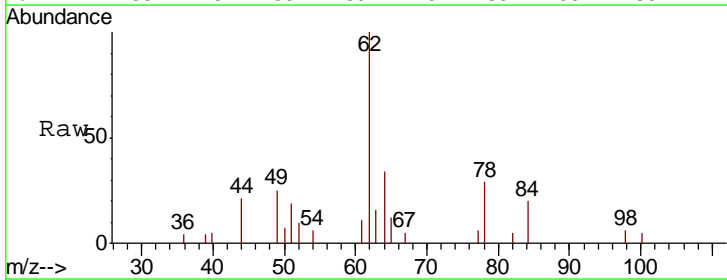
Instrument : MSVOA_V
 ClientSampled : MDL-WATER-02

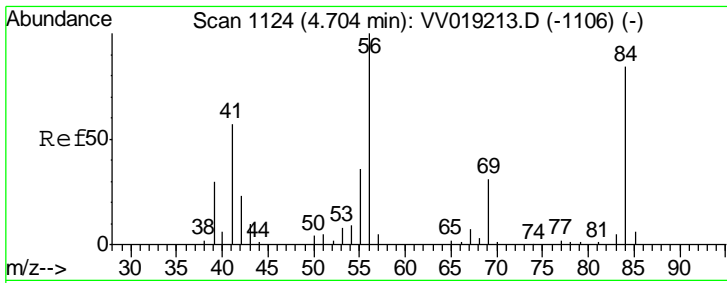
Tgt Ion	Resp	Lower	Upper
83	100		
85	64.2	45.4	84.4



#27
 1,2-Dichloroethane
 Concen: 2.461 ug/L
 RT: 5.17 min Scan# 1268
 Delta R.T. 0.01 min
 Lab File: VV019224.D
 Acq: 03 Nov 2020 02:27

Tgt Ion	Resp	Lower	Upper
62	100		
98	5.8	6.8	10.2#

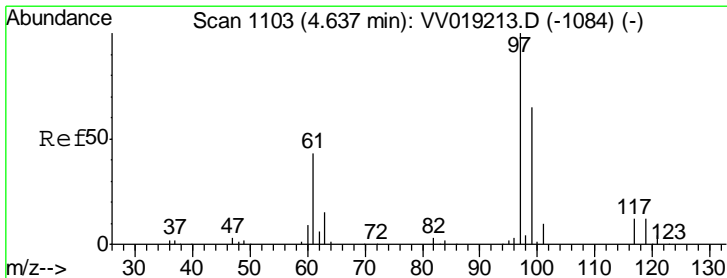
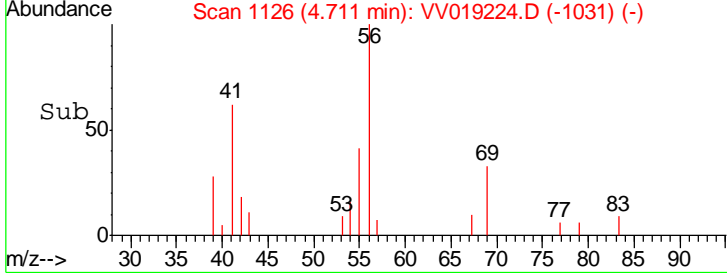
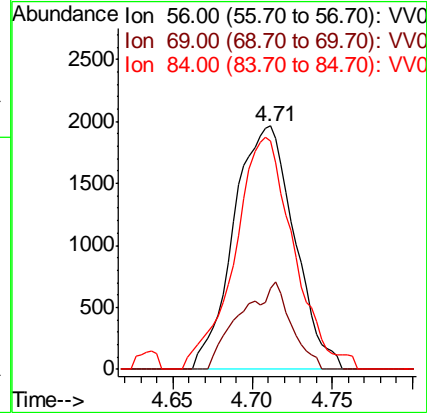
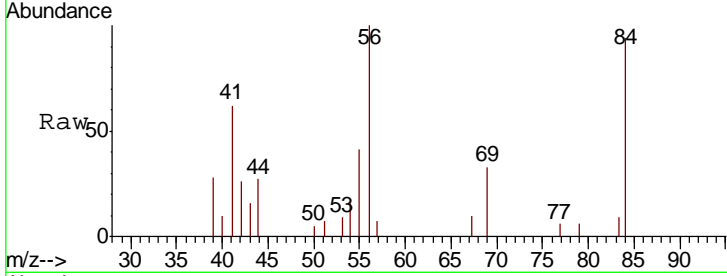




#29
 Cyclohexane
 Concen: 2.566 ug/L
 RT: 4.71 min Scan# 1126
 Delta R.T. 0.01 min
 Lab File: VV019224.D
 Acq: 03 Nov 2020 02:27

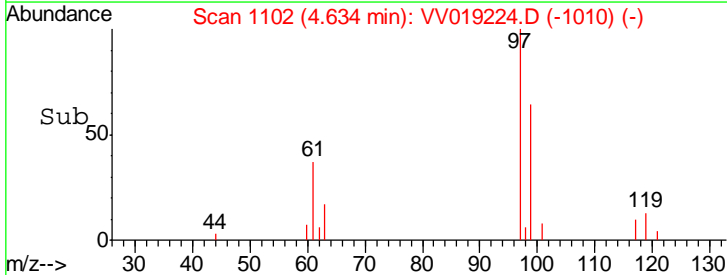
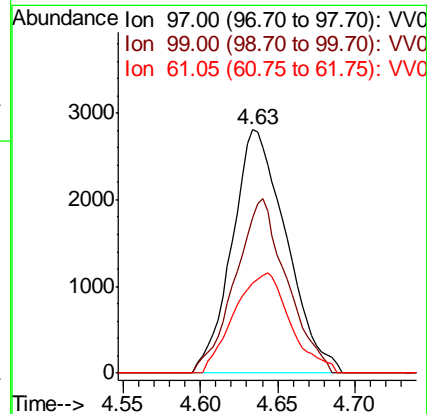
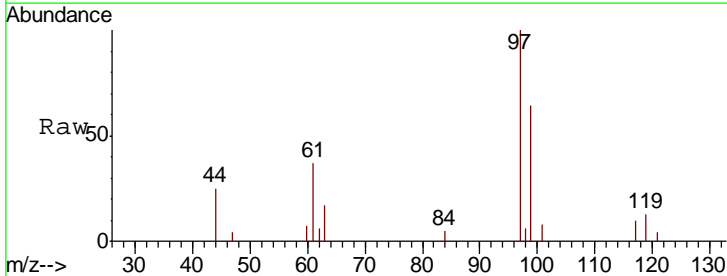
Instrument : MSVOA_V
 ClientSampled : MDL-WATER-02

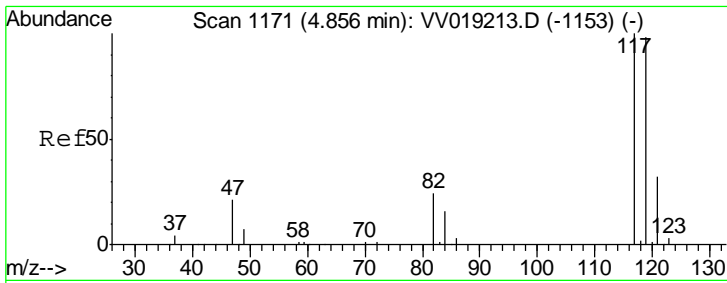
Tgt Ion	Resp	Lower	Upper
56	100		
69	15.8	24.6	36.8#
84	92.7	70.5	105.7



#30
 1,1,1-Trichloroethane
 Concen: 2.533 ug/L
 RT: 4.63 min Scan# 1102
 Delta R.T. -0.00 min
 Lab File: VV019224.D
 Acq: 03 Nov 2020 02:27

Tgt Ion	Resp	Lower	Upper
97	100		
99	68.3	52.0	78.0
61	42.7	35.3	52.9

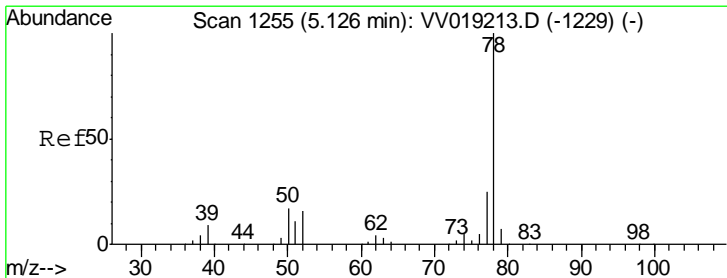
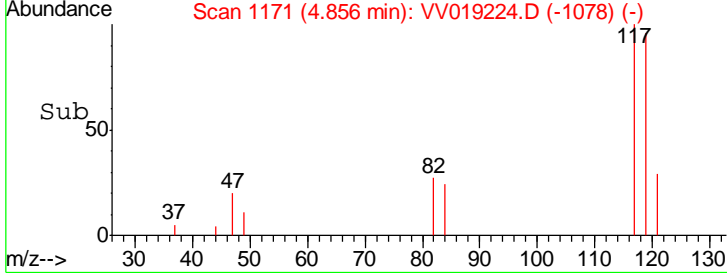
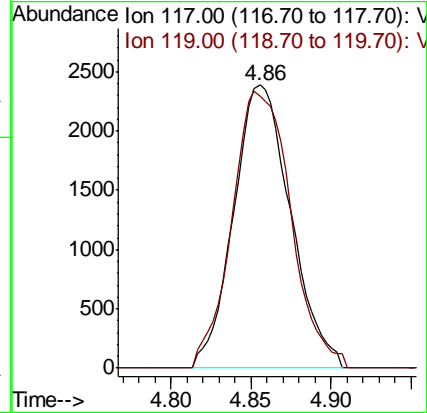
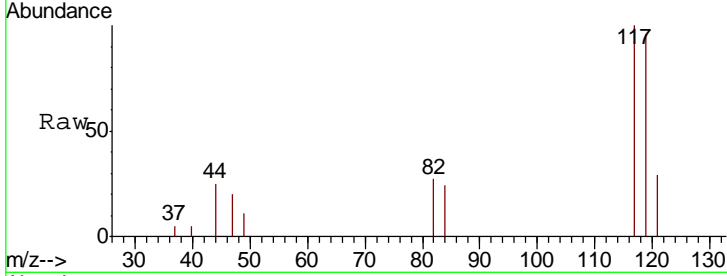




#31
 Carbon tetrachloride
 Concen: 2.503 ug/L
 RT: 4.86 min Scan# 1171
 Delta R.T. 0.00 min
 Lab File: VV019224.D
 Acq: 03 Nov 2020 02:27

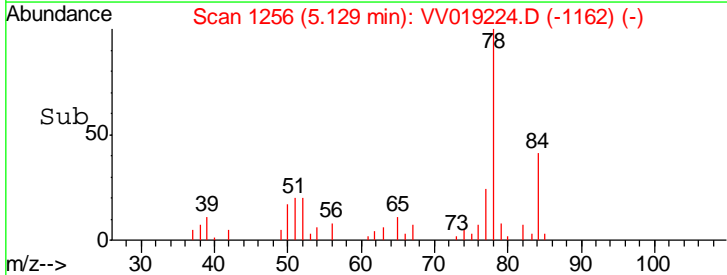
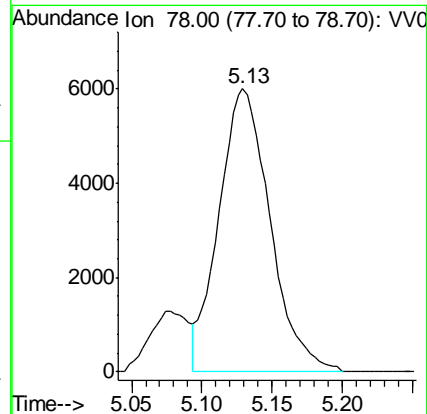
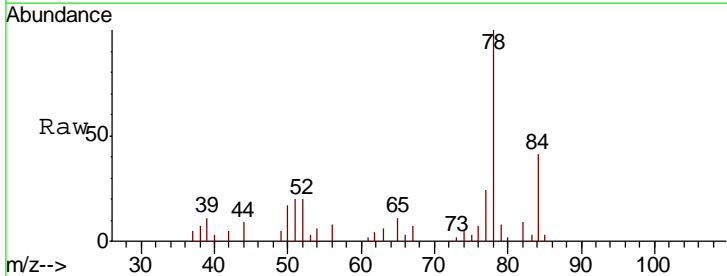
Instrument :
 MSVOA_V
 ClientSampled :
 MDL-WATER-02

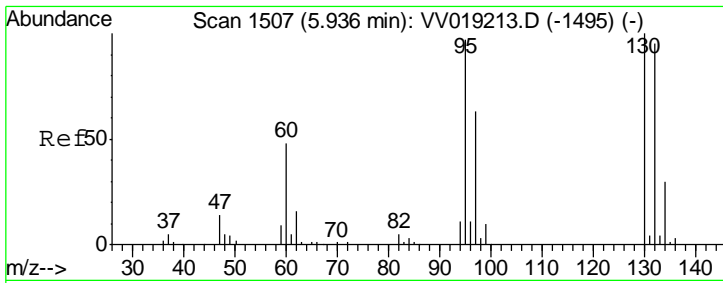
Tgt Ion: 117 Resp: 5827
 Ion Ratio Lower Upper
 117 100
 119 100.7 77.8 116.6



#33
 Benzene
 Concen: 2.633 ug/L
 RT: 5.13 min Scan# 1256
 Delta R.T. 0.00 min
 Lab File: VV019224.D
 Acq: 03 Nov 2020 02:27

Tgt Ion: 78 Resp: 15212

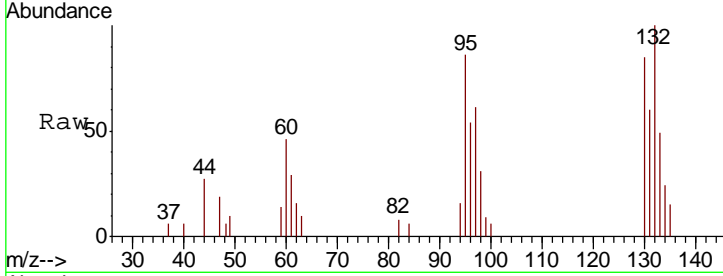




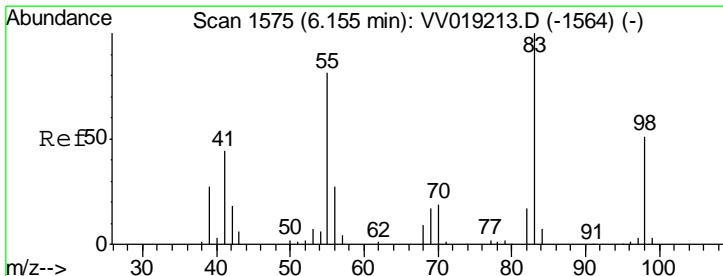
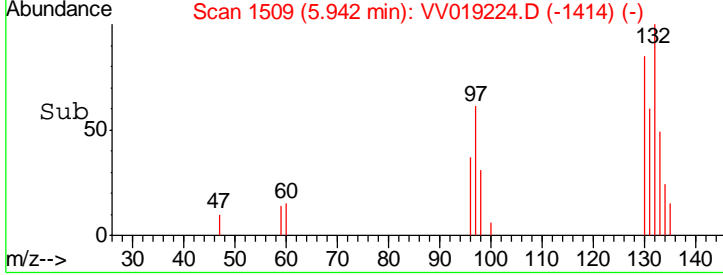
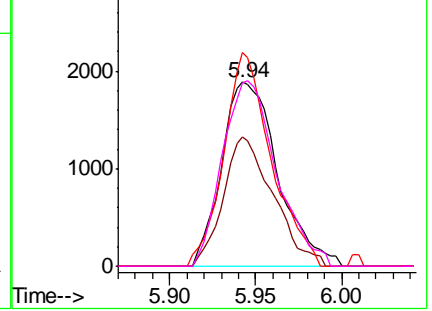
#34
 Trichloroethene
 Concen: 2.741 ug/L
 RT: 5.94 min Scan# 1509
 Delta R.T. 0.01 min
 Lab File: VV019224.D
 Acq: 03 Nov 2020 02:27

Instrument : MSVOA_V
 ClientSampled : MDL-WATER-02

Tgt Ion	Resp	Lower	Upper
95	4303		
97	70.5	45.4	84.4
132	116.0	68.5	127.3
130	99.1	72.0	133.6

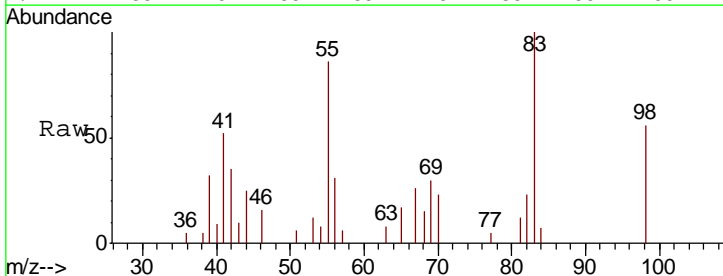


Abundance Ion 95.00 (94.70 to 95.70): VV019213.D (-1495) (-)
 Ion 97.00 (96.70 to 97.70): VV019213.D (-1495) (-)
 Ion 132.00 (131.70 to 132.70): VV019213.D (-1495) (-)
 Ion 130.00 (129.70 to 130.70): VV019213.D (-1495) (-)

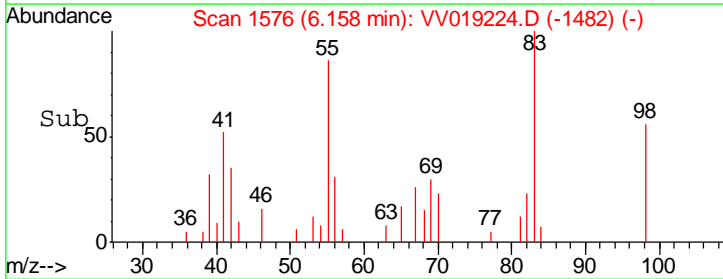
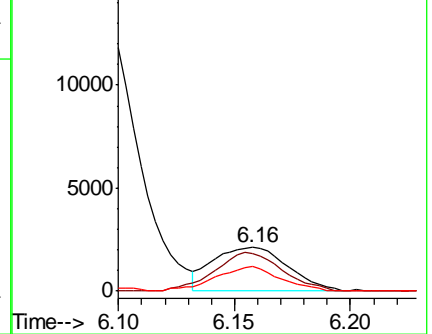


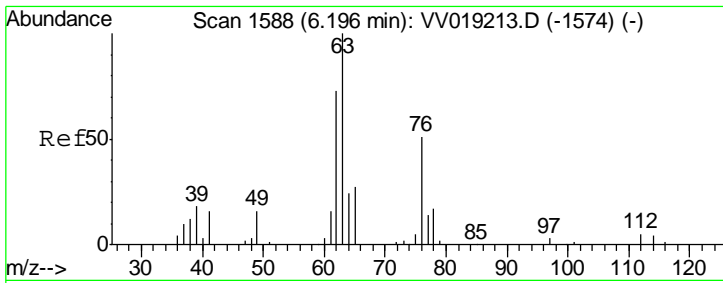
#35
 Methylcyclohexane
 Concen: 2.511 ug/L
 RT: 6.16 min Scan# 1576
 Delta R.T. 0.00 min
 Lab File: VV019224.D
 Acq: 03 Nov 2020 02:27

Tgt Ion	Resp	Lower	Upper
83	4771		
55	79.0	62.8	94.2
98	48.4	38.6	58.0



Abundance Ion 83.00 (82.70 to 83.70): VV019213.D (-1564) (-)
 Ion 55.00 (54.70 to 55.70): VV019213.D (-1564) (-)
 Ion 98.00 (97.70 to 98.70): VV019213.D (-1564) (-)

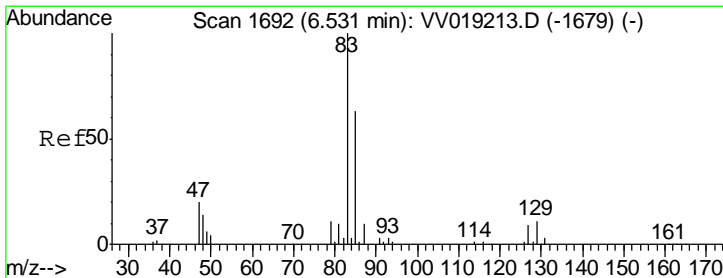
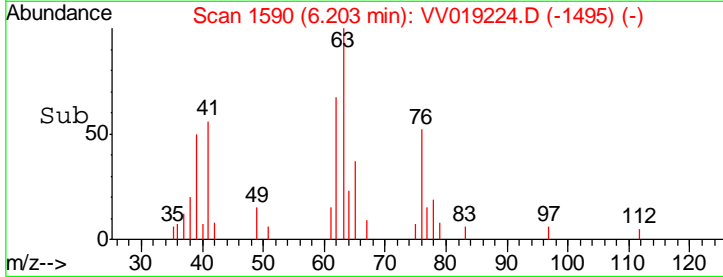
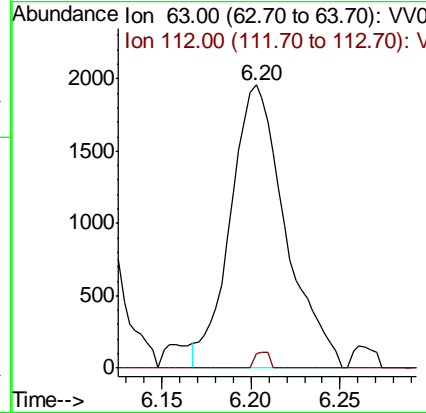
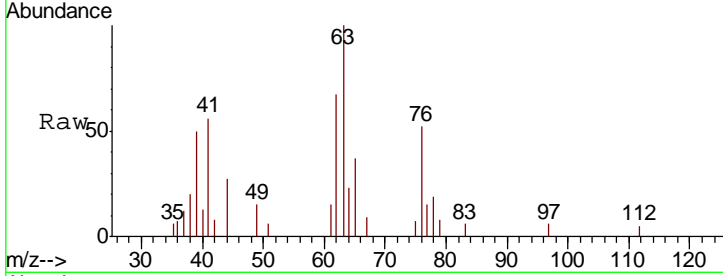




#37
 1,2-Dichloropropane
 Concen: 2.727 ug/L
 RT: 6.20 min Scan# 1590
 Delta R.T. 0.01 min
 Lab File: VV019224.D
 Acq: 03 Nov 2020 02:27

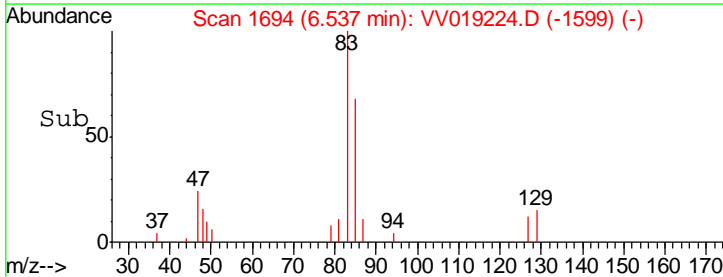
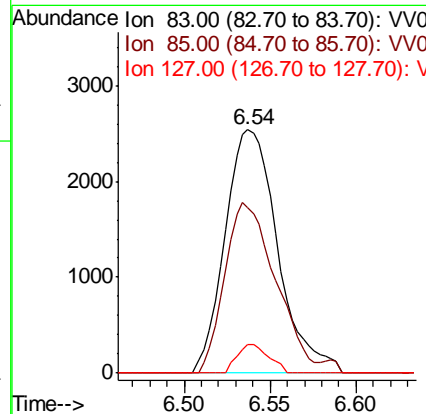
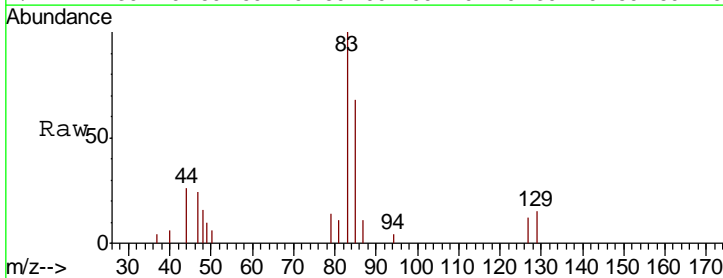
Instrument :
 MSVOA_V
 ClientSampled :
 MDL-WATER-02

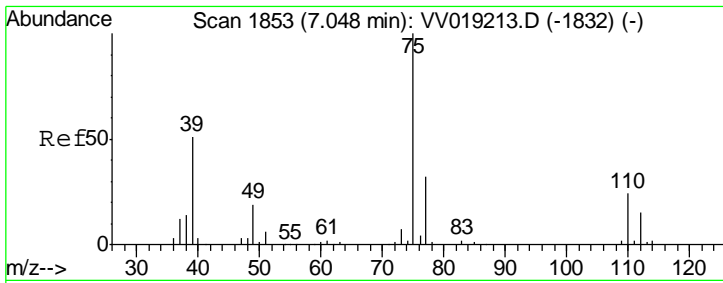
Tgt Ion: 63 Resp: 4204
 Ion Ratio Lower Upper
 63 100
 112 1.5 4.2 6.2#



#38
 Bromodichloromethane
 Concen: 2.441 ug/L
 RT: 6.54 min Scan# 1694
 Delta R.T. 0.01 min
 Lab File: VV019224.D
 Acq: 03 Nov 2020 02:27

Tgt Ion: 83 Resp: 5416
 Ion Ratio Lower Upper
 83 100
 85 67.8 44.0 81.8
 127 11.6 7.3 10.9#

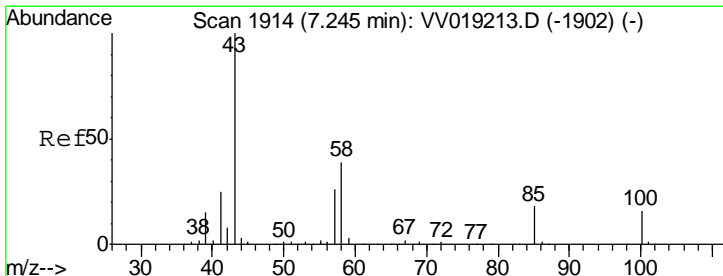
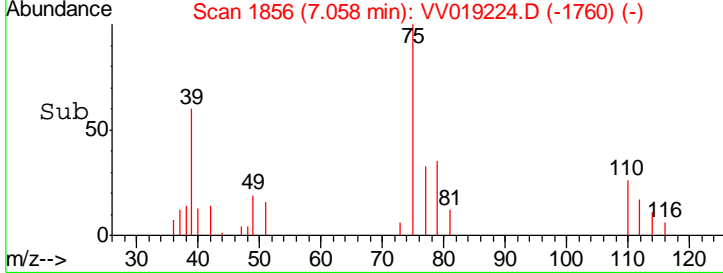
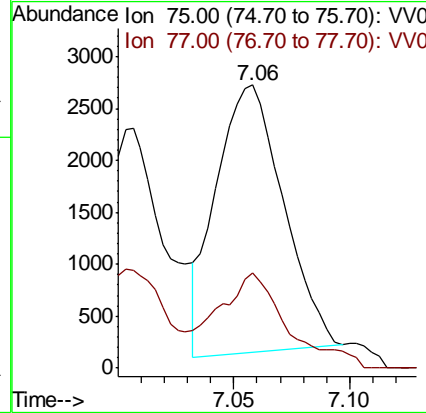
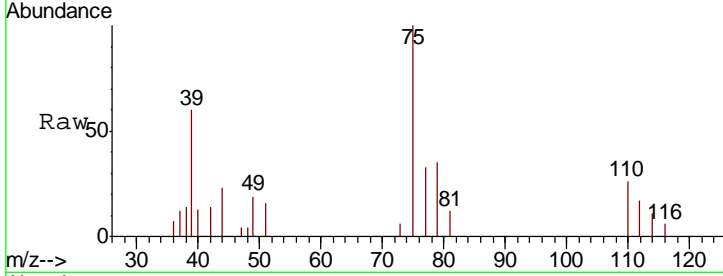




#39
 cis-1,3-Dichloropropene
 Concen: 2.108 ug/L
 RT: 7.06 min Scan# 1856
 Delta R.T. 0.01 min
 Lab File: VV019224.D
 Acq: 03 Nov 2020 02:27

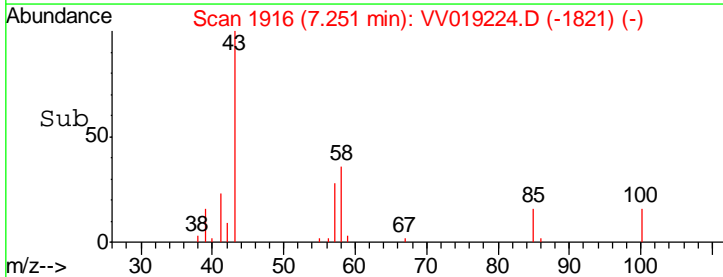
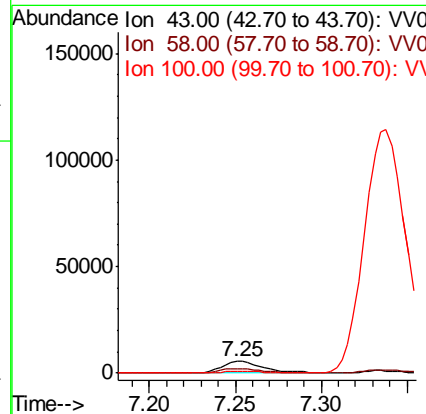
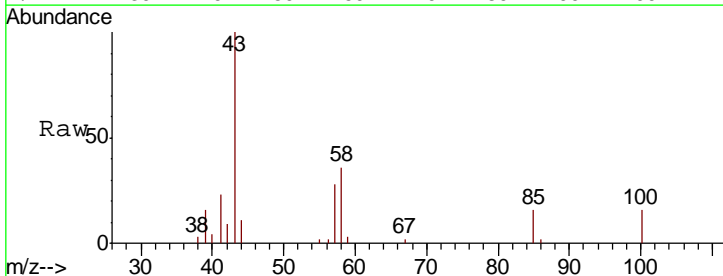
Instrument : MSVOA_V
 ClientSampled : MDL-WATER-02

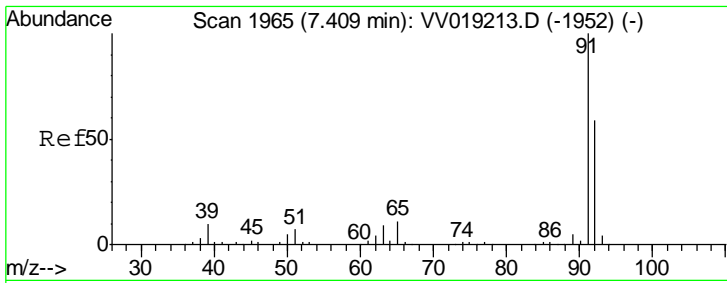
Tgt Ion: 75 Resp: 5200
 Ion Ratio Lower Upper
 75 100
 77 33.4 22.2 41.2



#40
 4-Methyl-2-pentanone
 Concen: 4.690 ug/L
 RT: 7.25 min Scan# 1916
 Delta R.T. 0.01 min
 Lab File: VV019224.D
 Acq: 03 Nov 2020 02:27

Tgt Ion: 43 Resp: 9713
 Ion Ratio Lower Upper
 43 100
 58 39.7 30.5 45.7
 100 15.7 12.7 19.1



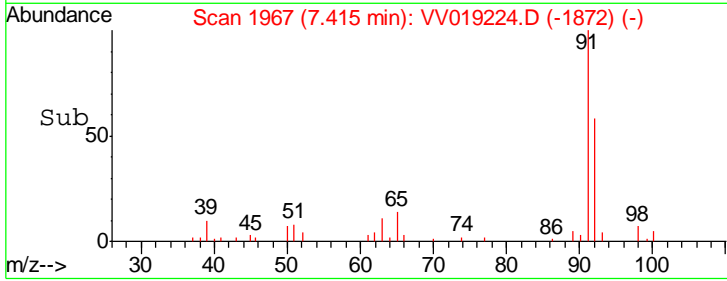
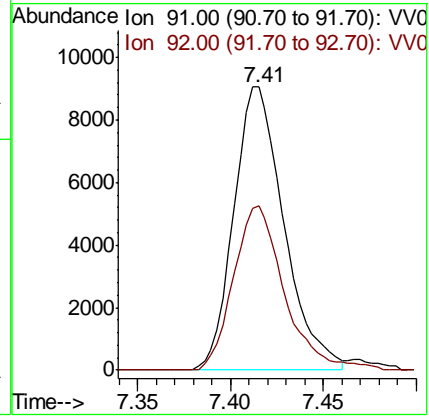
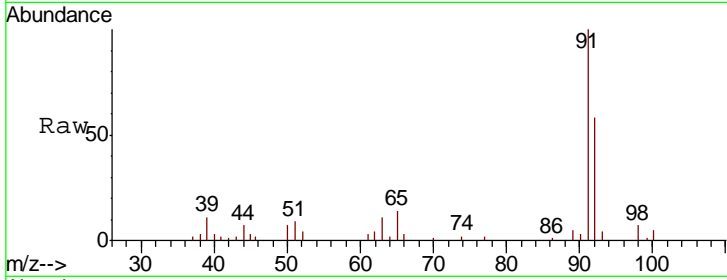


#42
 Toluene
 Concen: 2.735 ug/L
 RT: 7.41 min Scan# 1967
 Delta R.T. 0.01 min
 Lab File: VV019224.D
 Acq: 03 Nov 2020 02:27

Instrument : MSVOA_V
 ClientSampled : MDL-WATER-02

Tgt Ion: 91 Resp: 17080

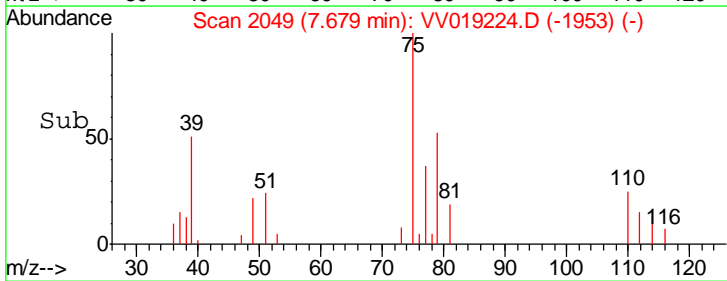
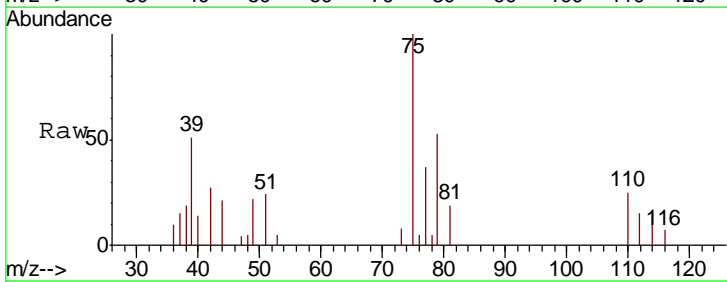
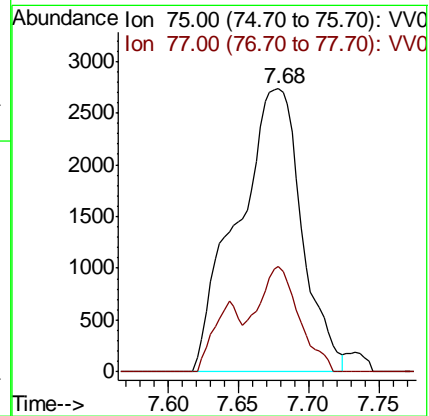
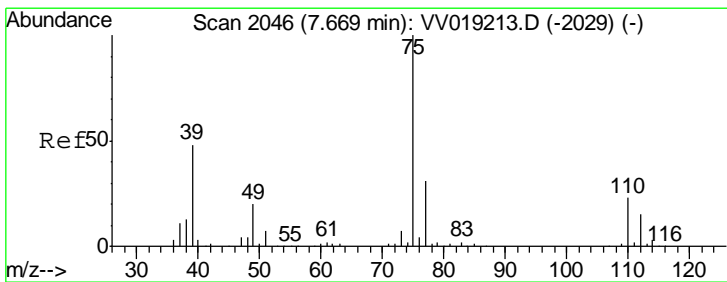
Ion	Ratio	Lower	Upper
91	100		
92	58.1	40.6	75.4

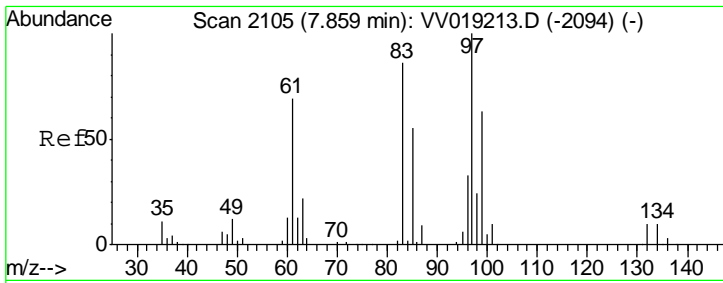


#44
 trans-1,3-Dichloropropene
 Concen: 3.444 ug/L
 RT: 7.68 min Scan# 2049
 Delta R.T. 0.01 min
 Lab File: VV019224.D
 Acq: 03 Nov 2020 02:27

Tgt Ion: 75 Resp: 8707

Ion	Ratio	Lower	Upper
75	100		
77	37.2	21.6	40.2

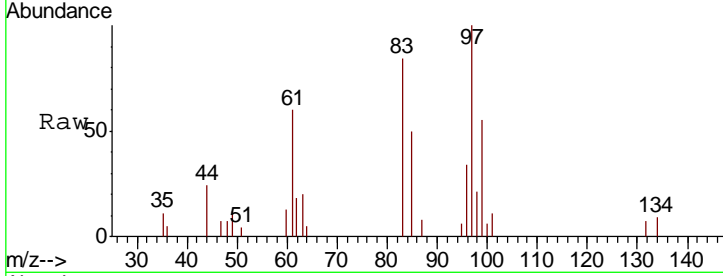




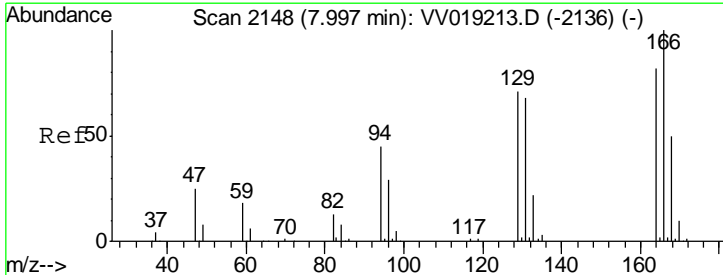
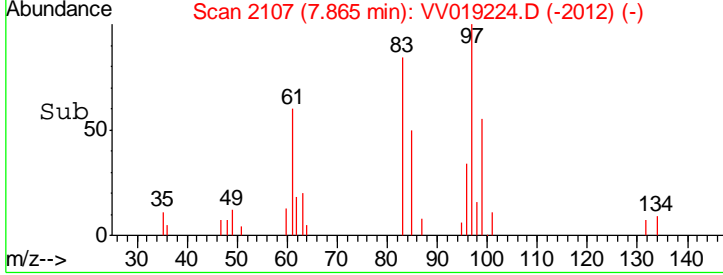
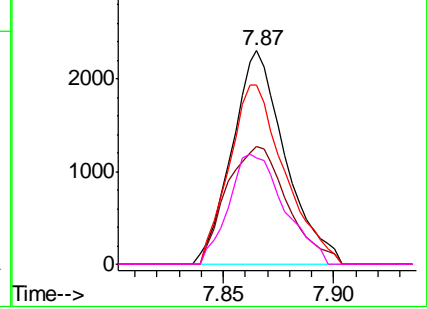
#45
 1,1,2-Trichloroethane
 Concen: 2.530 ug/L
 RT: 7.87 min Scan# 2107
 Delta R.T. 0.01 min
 Lab File: VV019224.D
 Acq: 03 Nov 2020 02:27

Instrument :
 MSVOA_V
 ClientSampled :
 MDL-WATER-02

Tgt Ion	Resp	Lower	Upper
97	100		
99	54.9	45.1	83.9
83	83.7	57.6	107.0
85	49.8	37.8	70.2

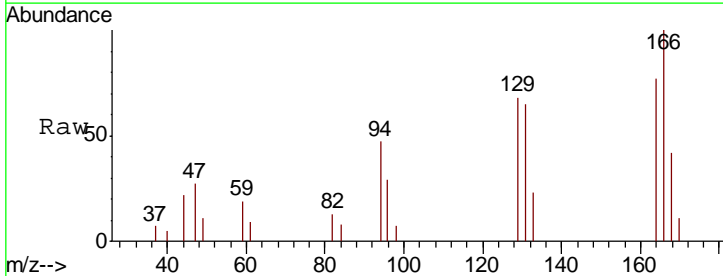


Abundance Ion 97.00 (96.70 to 97.70): VV019213.D (-2094) (-)
 Ion 99.00 (98.70 to 99.70): VV019213.D (-2094) (-)
 Ion 83.00 (82.70 to 83.70): VV019213.D (-2094) (-)
 Ion 85.00 (84.70 to 85.70): VV019213.D (-2094) (-)

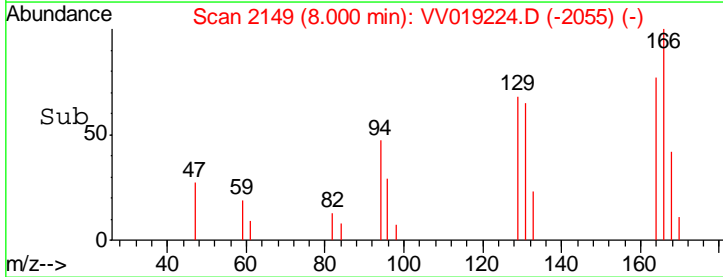
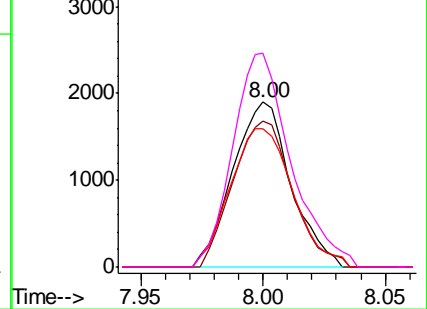


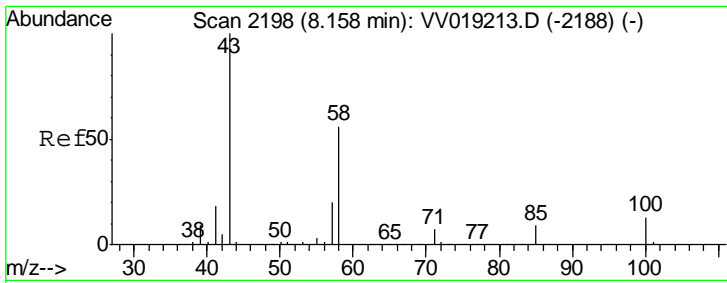
#46
 Tetrachloroethene
 Concen: 2.451 ug/L
 RT: 8.00 min Scan# 2149
 Delta R.T. 0.00 min
 Lab File: VV019224.D
 Acq: 03 Nov 2020 02:27

Tgt Ion	Resp	Lower	Upper
164	100		
129	88.8	62.6	116.3
131	83.7	59.0	109.6
166	129.7	88.0	163.4



Abundance Ion 164.00 (163.70 to 164.70): VV019213.D (-2136) (-)
 Ion 129.00 (128.70 to 129.70): VV019213.D (-2136) (-)
 Ion 131.00 (130.70 to 131.70): VV019213.D (-2136) (-)
 Ion 166.00 (165.70 to 166.70): VV019213.D (-2136) (-)

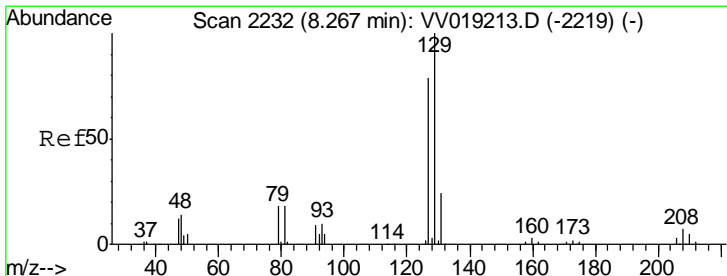
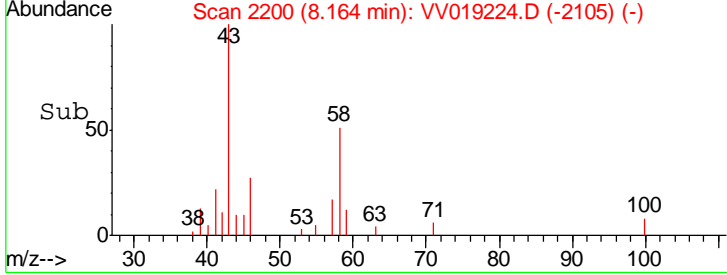
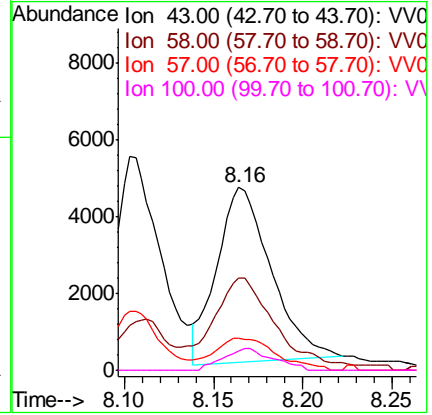
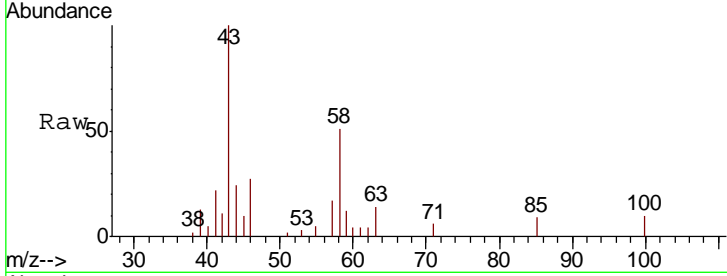




#48
 2-Hexanone
 Concen: 6.129 ug/L
 RT: 8.16 min Scan# 2200
 Delta R.T. 0.01 min
 Lab File: VV019224.D
 Acq: 03 Nov 2020 02:27

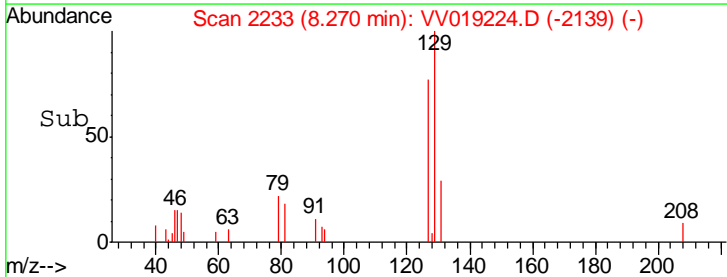
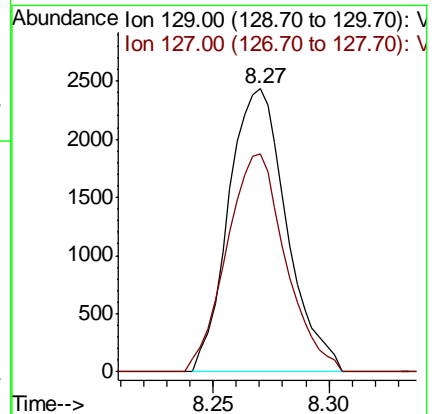
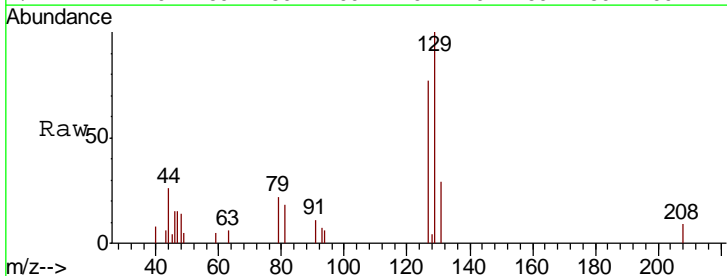
Instrument : MSVOA_V
 ClientSampled : MDL-WATER-02

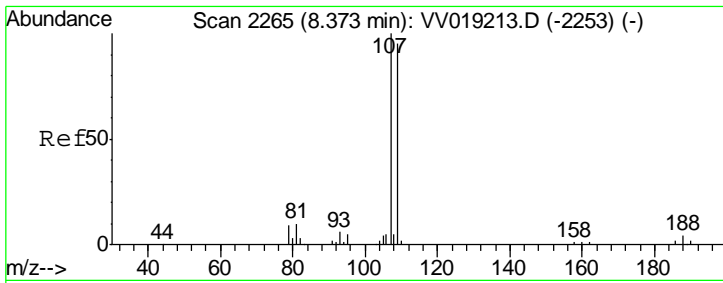
Tgt Ion	Resp	Lower	Upper
43	9597		
58	50.9	42.6	63.8
57	21.2	15.8	23.8
100	11.3	10.4	15.6



#49
 Dibromochloromethane
 Concen: 2.331 ug/L
 RT: 8.27 min Scan# 2233
 Delta R.T. 0.00 min
 Lab File: VV019224.D
 Acq: 03 Nov 2020 02:27

Tgt Ion	Resp	Lower	Upper
129	4236		
127	77.3	54.4	101.0

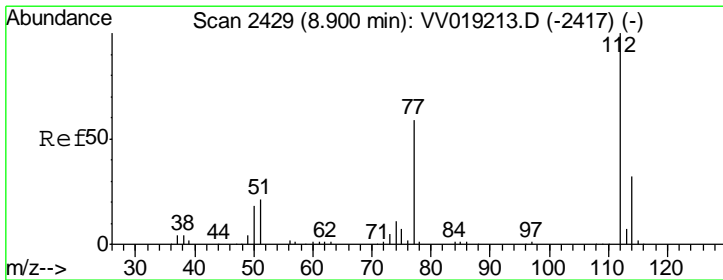
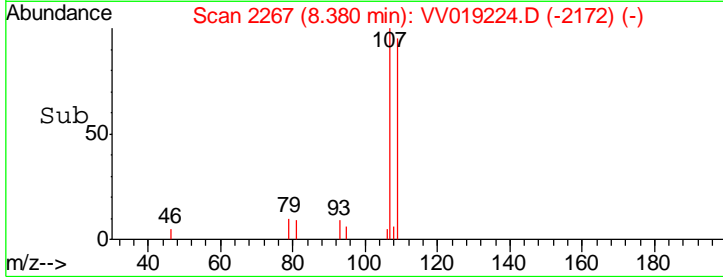
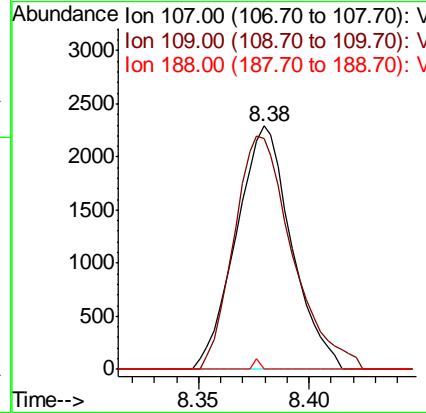
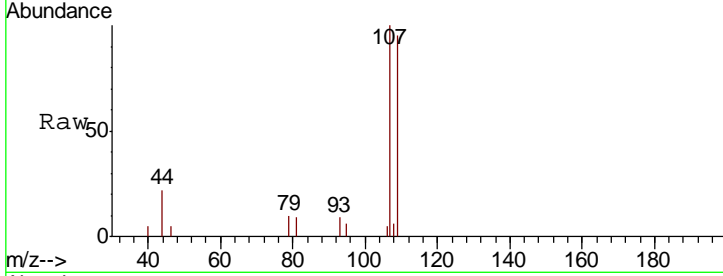




#50
 1,2-Dibromoethane
 Concen: 2.522 ug/L
 RT: 8.38 min Scan# 2267
 Delta R.T. 0.01 min
 Lab File: VV019224.D
 Acq: 03 Nov 2020 02:27

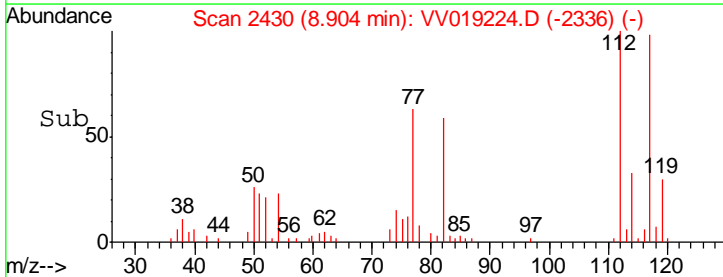
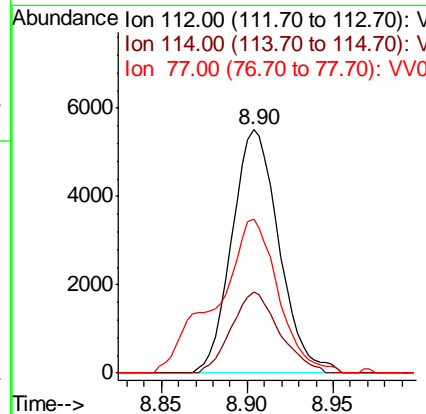
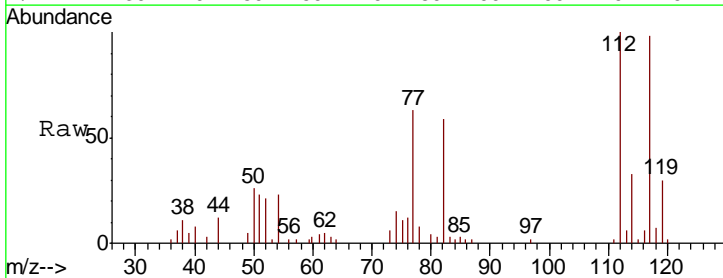
Instrument :
 MSVOA_V
 ClientSampleId :
 MDL-WATER-02

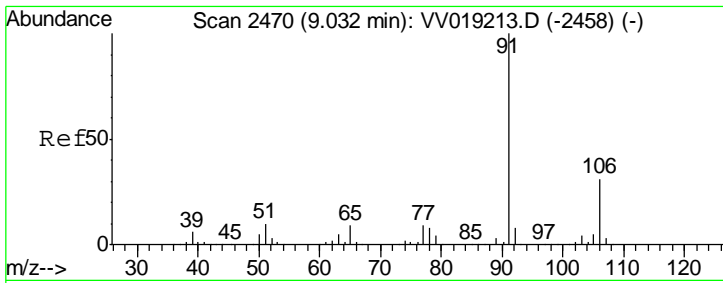
Tgt Ion	Resp	Lower	Upper
107	3983		
109	94.9	64.8	120.4
188	0.0	3.8	5.8#



#51
 Chlorobenzene
 Concen: 2.516 ug/L
 RT: 8.90 min Scan# 2430
 Delta R.T. 0.00 min
 Lab File: VV019224.D
 Acq: 03 Nov 2020 02:27

Tgt Ion	Resp	Lower	Upper
112	10507		
114	33.4	22.7	42.1
77	63.3	47.3	70.9

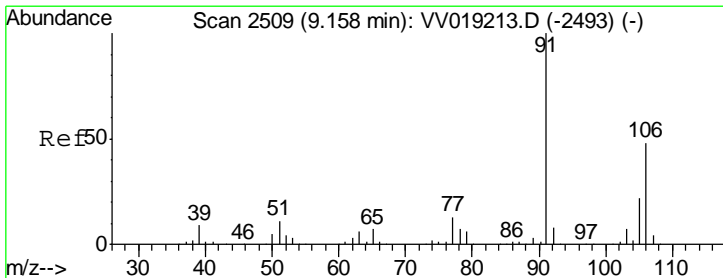
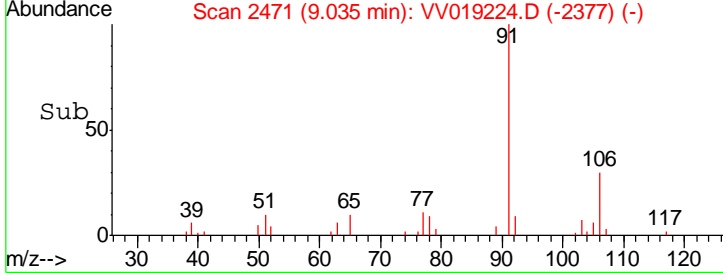
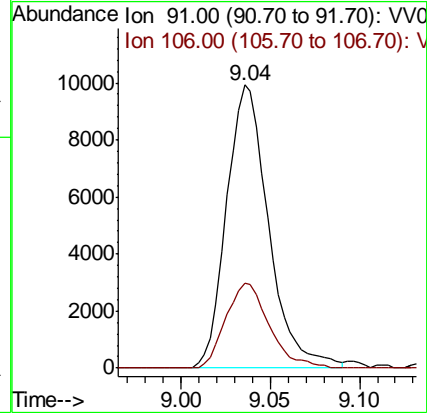
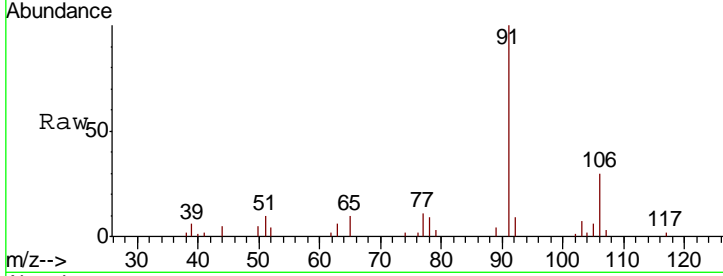




#52
Ethylbenzene
Concen: 2.367 ug/L
RT: 9.04 min Scan# 2471
Delta R.T. 0.00 min
Lab File: VV019224.D
Acq: 03 Nov 2020 02:27

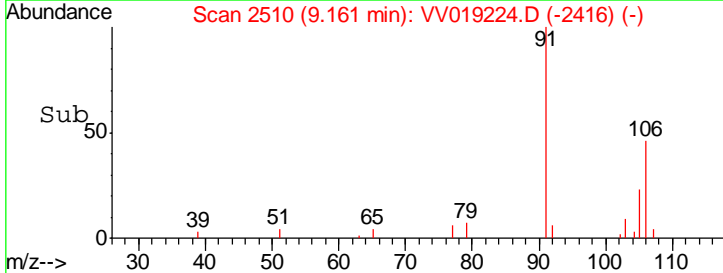
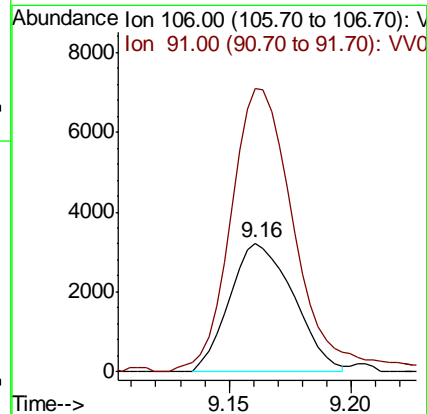
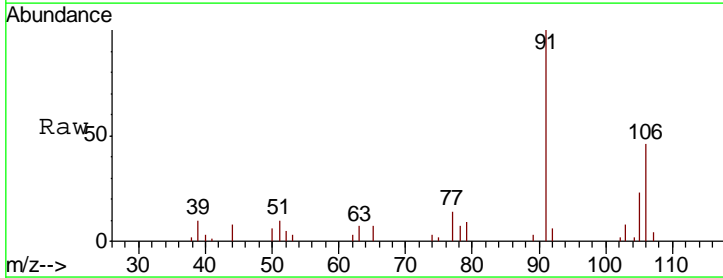
Instrument :
MSVOA_V
ClientSampled :
MDL-WATER-02

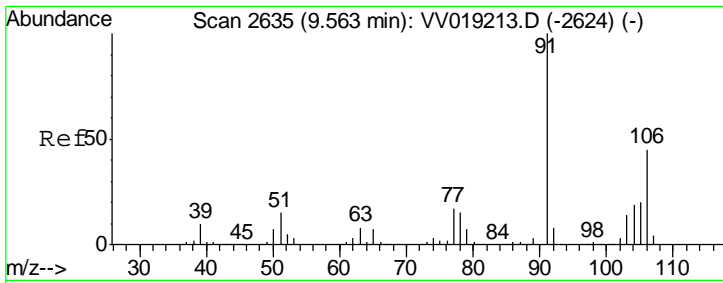
Tgt Ion: 91 Resp: 16307
Ion Ratio Lower Upper
91 100
106 29.9 21.6 40.0



#53
m,p-Xylene
Concen: 2.281 ug/L
RT: 9.16 min Scan# 2510
Delta R.T. 0.00 min
Lab File: VV019224.D
Acq: 03 Nov 2020 02:27

Tgt Ion: 106 Resp: 5882
Ion Ratio Lower Upper
106 100
91 219.5 147.2 273.4

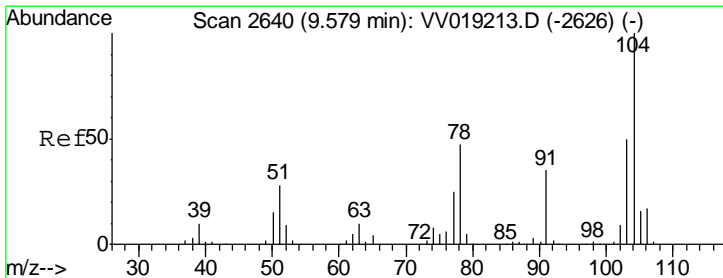
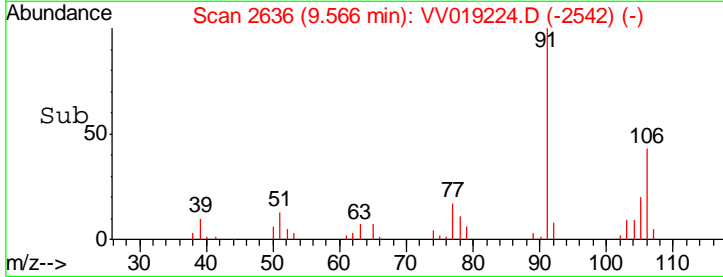
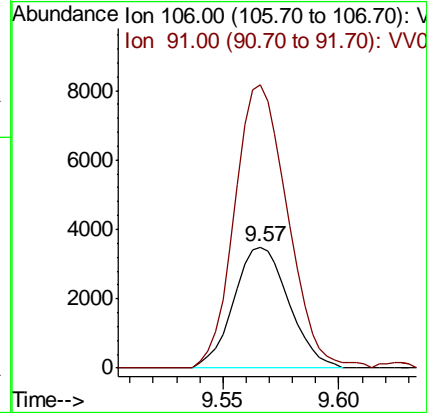
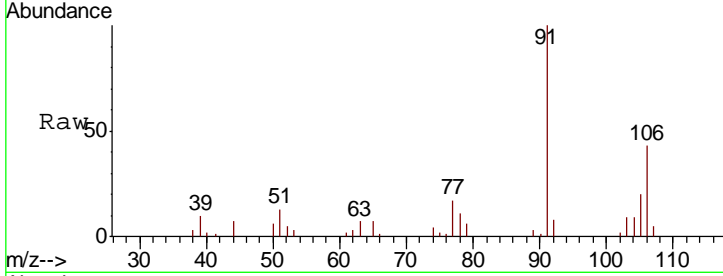




#54
 o-Xylene
 Concen: 2.258 ug/L
 RT: 9.57 min Scan# 2636
 Delta R.T. 0.00 min
 Lab File: VV019224.D
 Acq: 03 Nov 2020 02:27

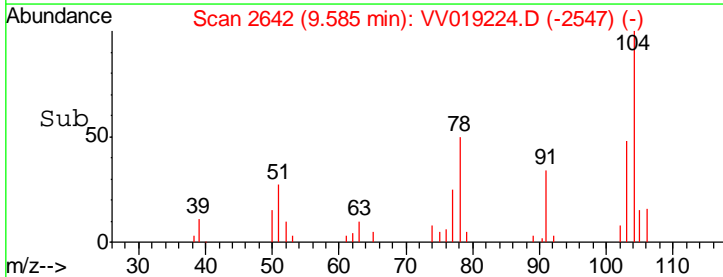
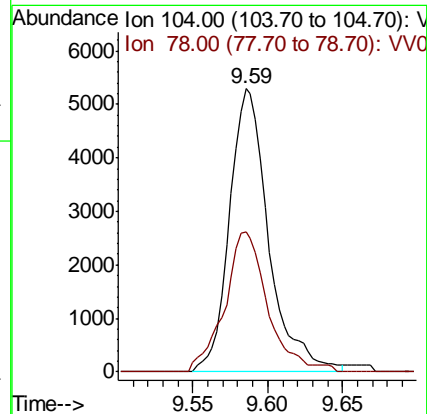
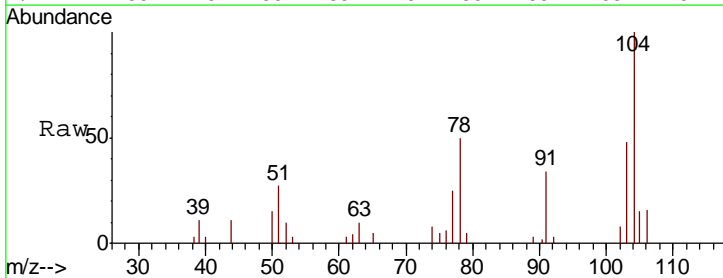
Instrument :
 MSVOA_V
 ClientSampled :
 MDL-WATER-02

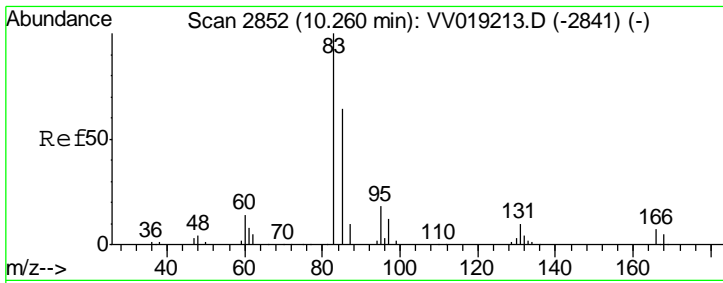
Tgt Ion:106 Resp: 5741
 Ion Ratio Lower Upper
 106 100
 91 233.7 151.6 281.6



#55
 Styrene
 Concen: 2.134 ug/L
 RT: 9.59 min Scan# 2642
 Delta R.T. 0.01 min
 Lab File: VV019224.D
 Acq: 03 Nov 2020 02:27

Tgt Ion:104 Resp: 9658
 Ion Ratio Lower Upper
 104 100
 78 49.6 32.6 60.5

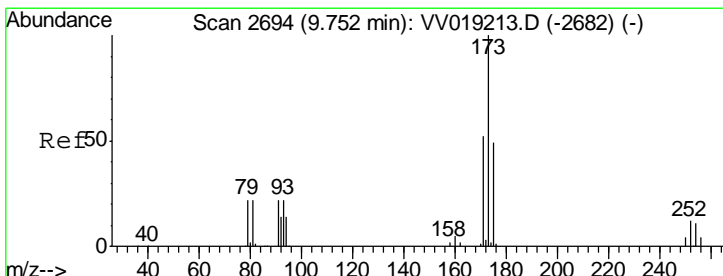
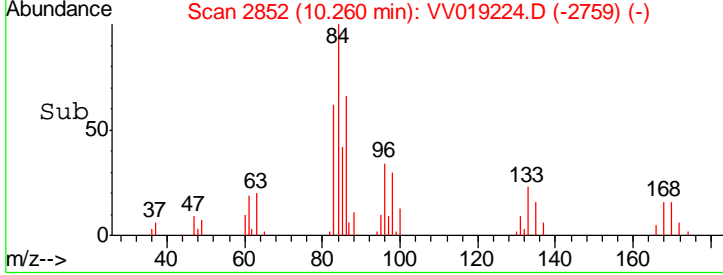
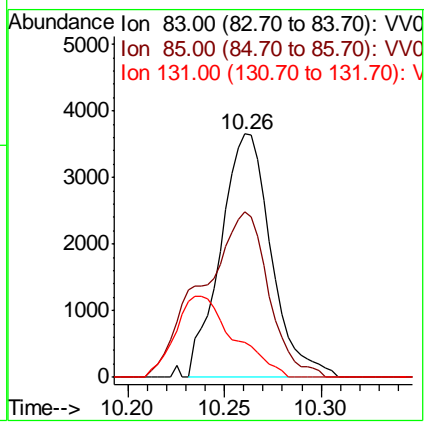
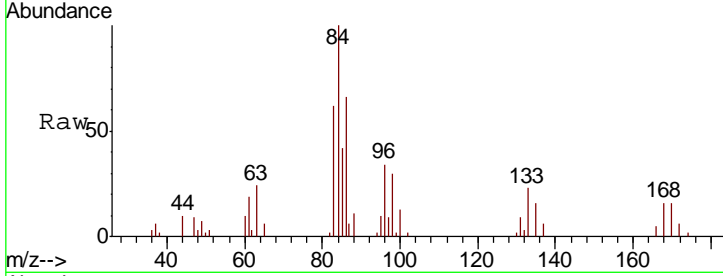




#57
 1,1,2,2-Tetrachloroethane
 Concen: 2.885 ug/L
 RT: 10.26 min Scan# 2852
 Delta R.T. 0.00 min
 Lab File: VV019224.D
 Acq: 03 Nov 2020 02:27

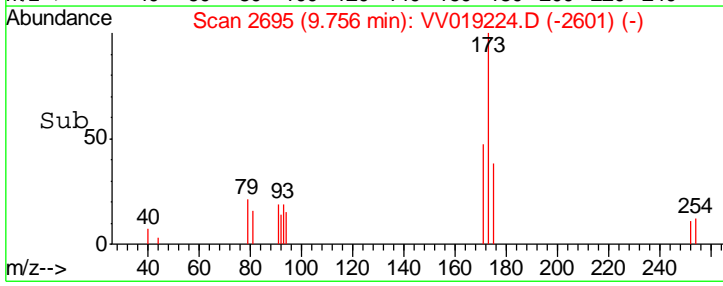
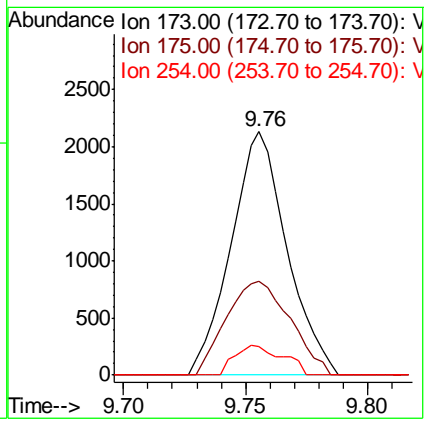
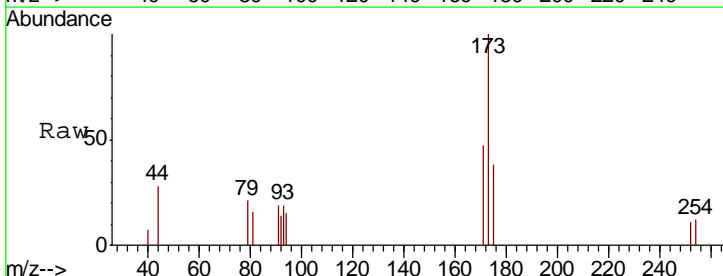
Instrument : MSVOA_V
 ClientSampled : MDL-WATER-02

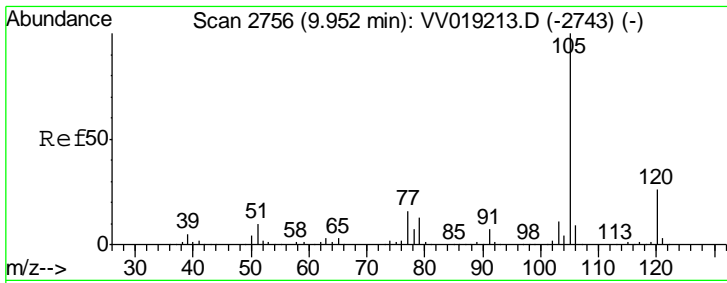
Tgt Ion	Resp	Lower	Upper
83	100		
85	67.8	45.0	83.6
131	14.5	8.9	13.3#



#59
 Bromoform
 Concen: 2.569 ug/L
 RT: 9.76 min Scan# 2695
 Delta R.T. 0.00 min
 Lab File: VV019224.D
 Acq: 03 Nov 2020 02:27

Tgt Ion	Resp	Lower	Upper
173	100		
175	44.2	38.4	57.6
254	7.9	9.0	13.6#

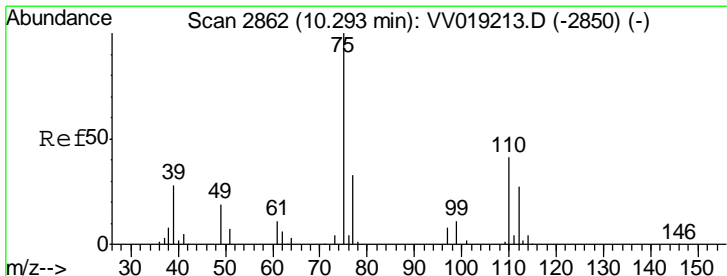
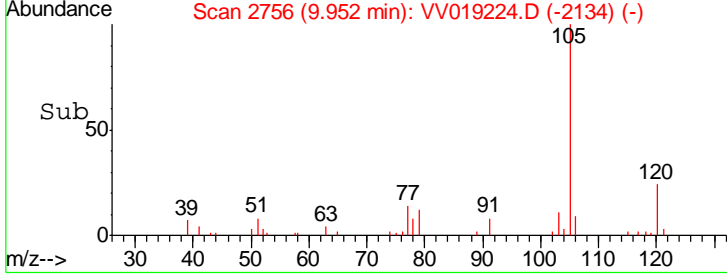
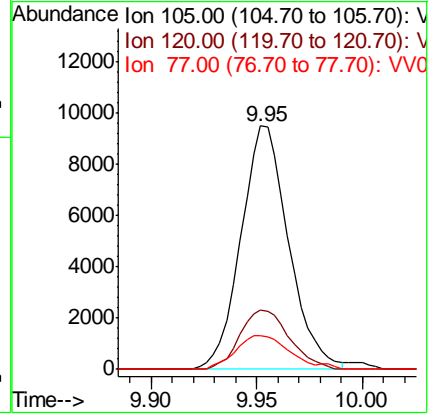
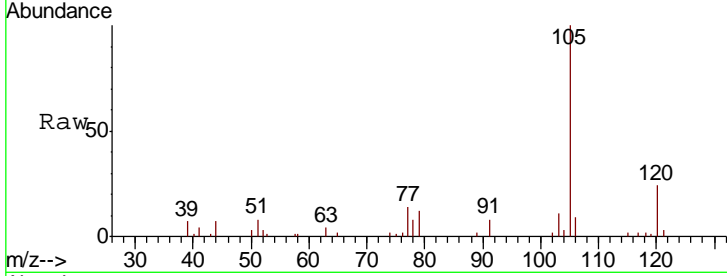




#60
 Isopropylbenzene
 Concen: 2.402 ug/L
 RT: 9.95 min Scan# 2756
 Delta R.T. 0.00 min
 Lab File: VV019224.D
 Acq: 03 Nov 2020 02:27

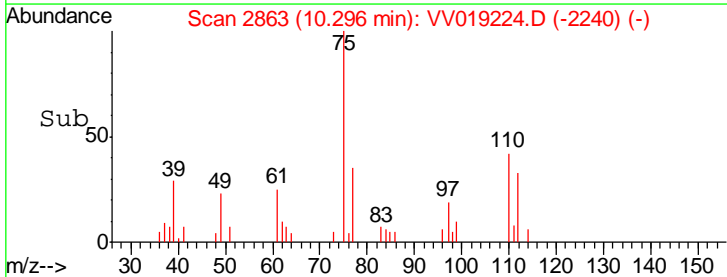
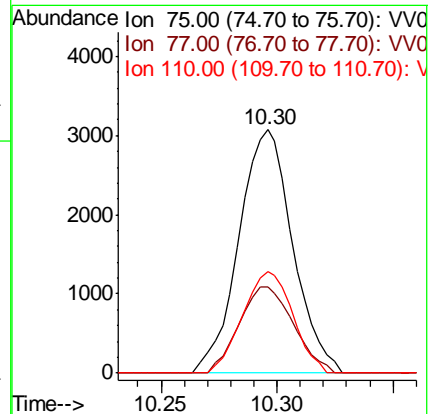
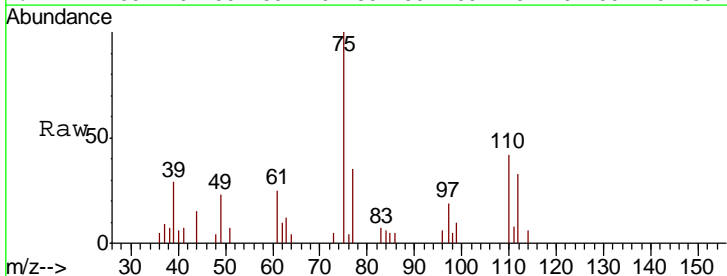
Instrument : MSVOA_V
 ClientSampled : MDL-WATER-02

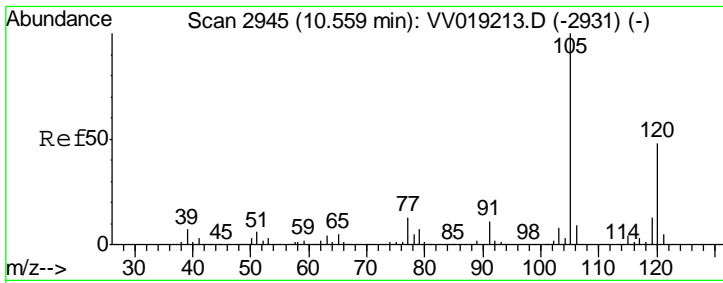
Tgt Ion	Resp	Lower	Upper
105	14933		
120	25.4	21.0	31.4
77	15.1	13.0	19.6



#61
 1,2,3-Trichloropropane
 Concen: 2.690 ug/L
 RT: 10.30 min Scan# 2863
 Delta R.T. 0.00 min
 Lab File: VV019224.D
 Acq: 03 Nov 2020 02:27

Tgt Ion	Resp	Lower	Upper
75	4957		
77	35.7	24.8	37.2
110	38.9	33.4	50.2

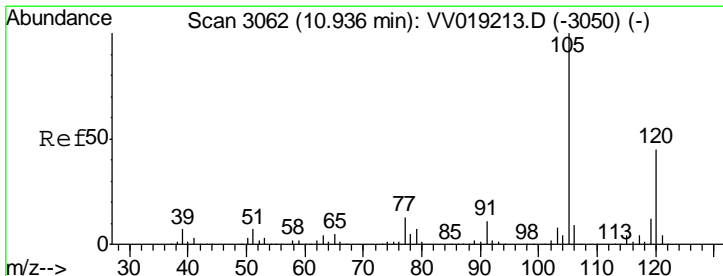
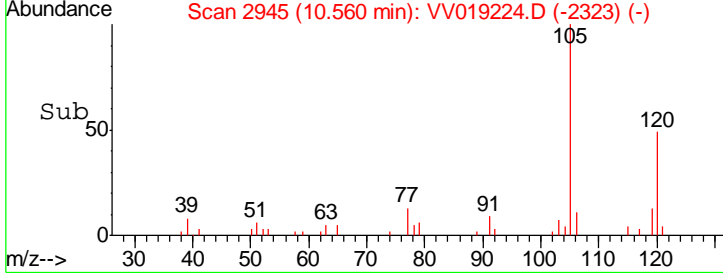
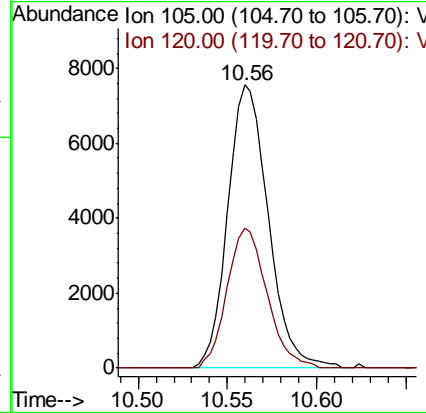
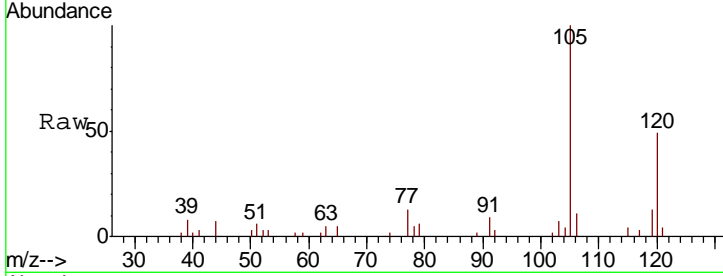




#62
 1,3,5-Trimethylbenzene
 Concen: 2.311 ug/L
 RT: 10.56 min Scan# 2945
 Delta R.T. 0.00 min
 Lab File: VV019224.D
 Acq: 03 Nov 2020 02:27

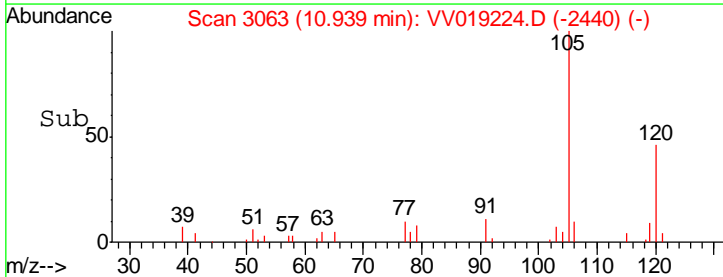
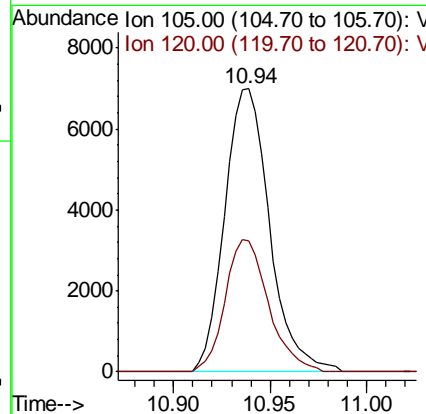
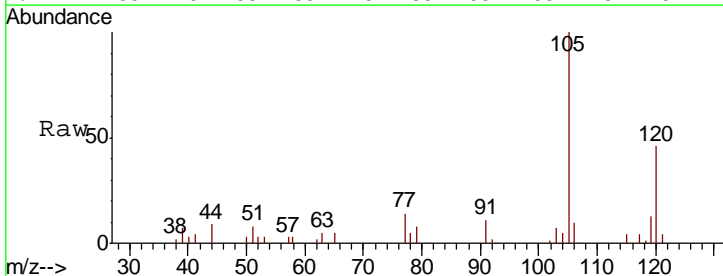
Instrument :
 MSVOA_V
 ClientSampled :
 MDL-WATER-02

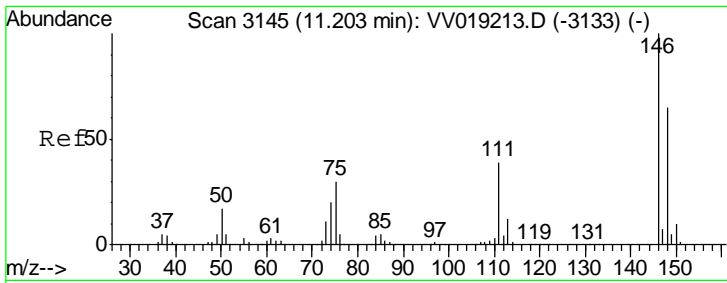
Tgt Ion:105 Resp: 11966
 Ion Ratio Lower Upper
 105 100
 120 48.7 38.3 57.5



#63
 1,2,4-Trimethylbenzene
 Concen: 2.231 ug/L
 RT: 10.94 min Scan# 3063
 Delta R.T. 0.00 min
 Lab File: VV019224.D
 Acq: 03 Nov 2020 02:27

Tgt Ion:105 Resp: 11304
 Ion Ratio Lower Upper
 105 100
 120 45.1 35.7 53.5

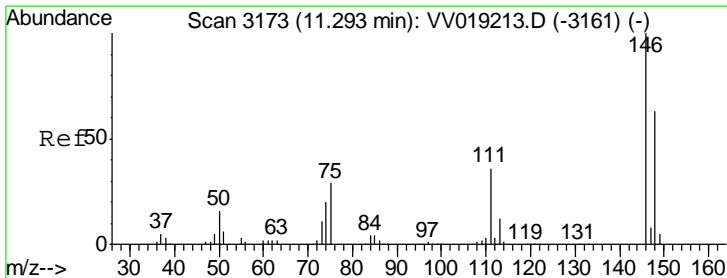
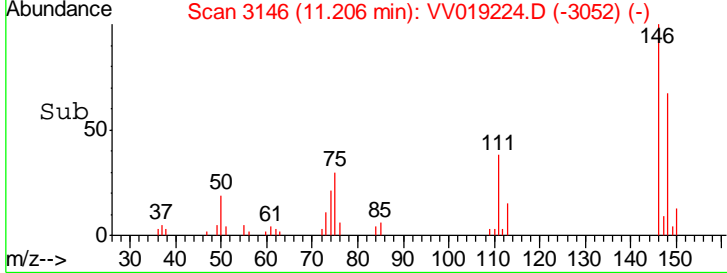
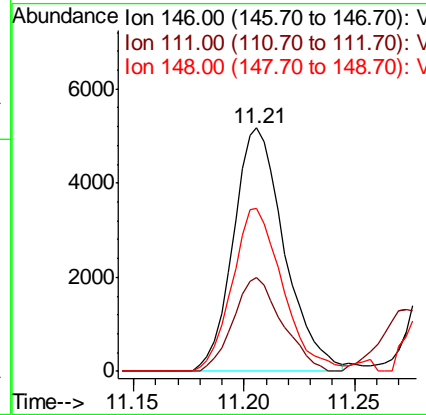
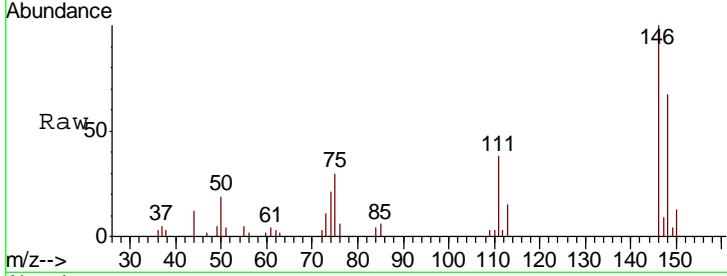




#64
 1,3-Dichlorobenzene
 Concen: 2.560 ug/L
 RT: 11.21 min Scan# 3146
 Delta R.T. 0.00 min
 Lab File: VV019224.D
 Acq: 03 Nov 2020 02:27

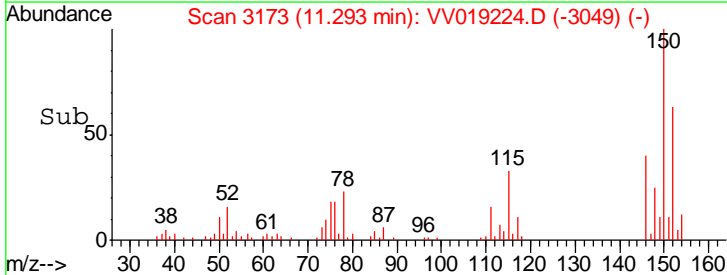
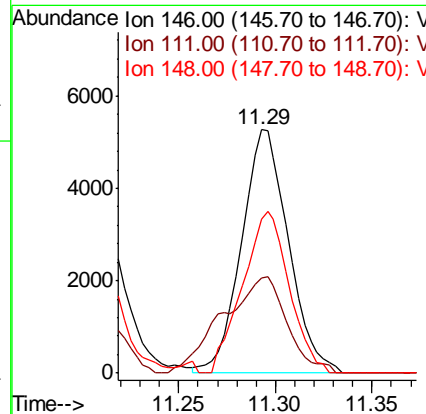
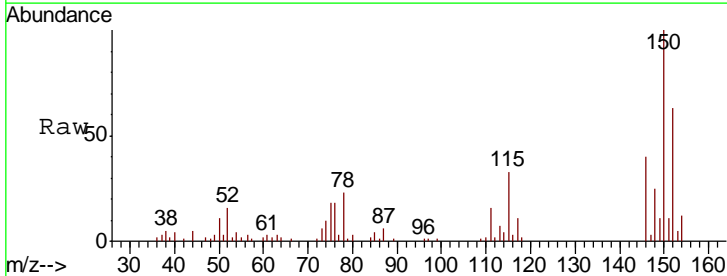
Instrument :
 MSVOA_V
 ClientSampled :
 MDL-WATER-02

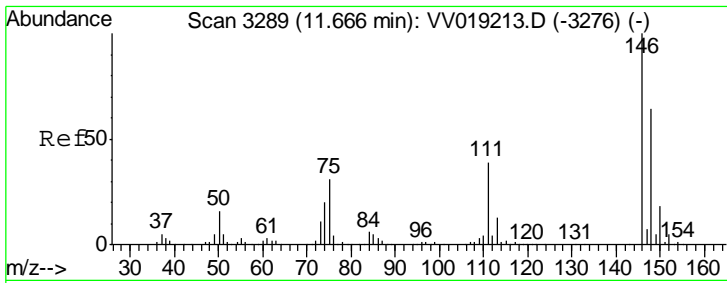
Tgt Ion	Resp	Lower	Upper
146	100		
111	38.3	27.3	50.7
148	67.0	45.2	84.0



#65
 1,4-Dichlorobenzene
 Concen: 2.642 ug/L
 RT: 11.29 min Scan# 3173
 Delta R.T. 0.00 min
 Lab File: VV019224.D
 Acq: 03 Nov 2020 02:27

Tgt Ion	Resp	Lower	Upper
146	100		
111	39.2	25.9	48.1
148	63.3	44.9	83.5

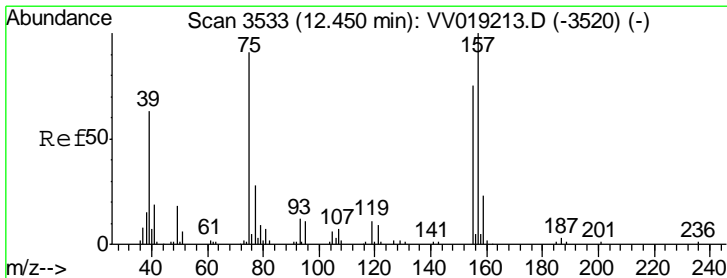
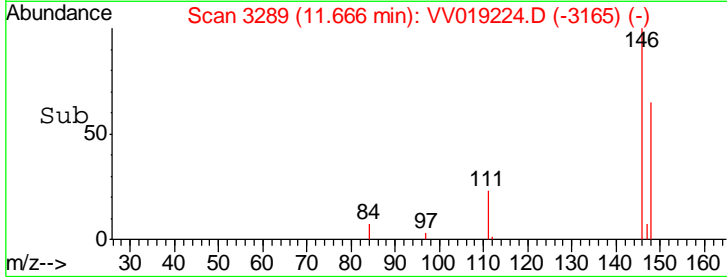
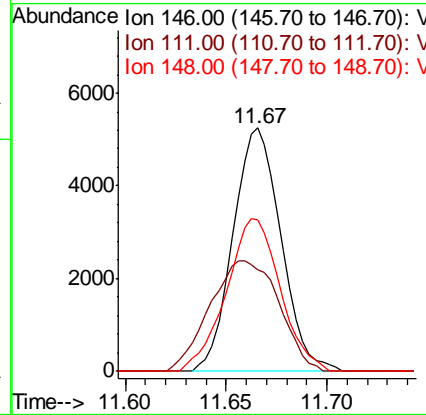
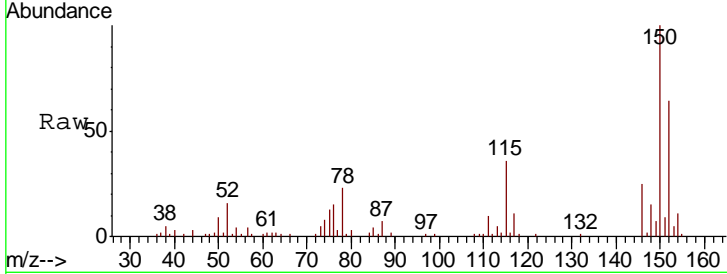




#67
 1,2-Dichlorobenzene
 Concen: 2.630 ug/L
 RT: 11.67 min Scan# 3289
 Delta R.T. 0.00 min
 Lab File: VV019224.D
 Acq: 03 Nov 2020 02:27

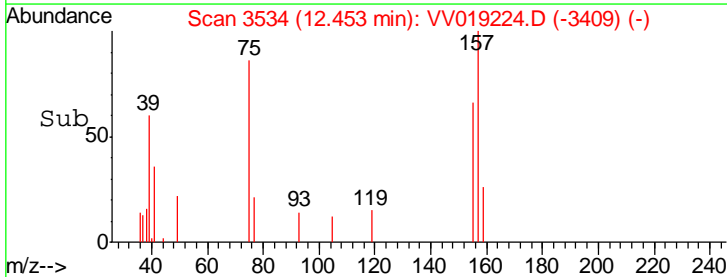
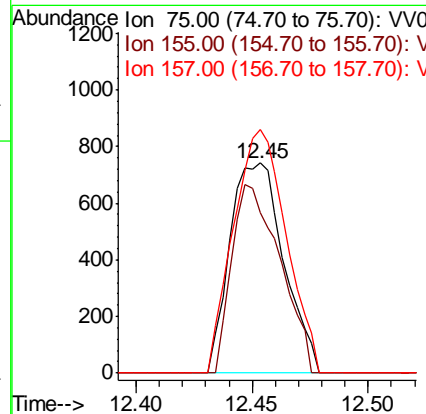
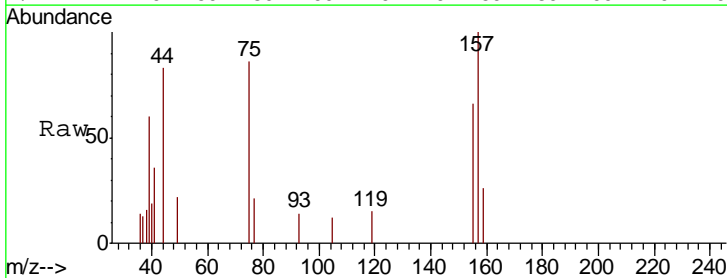
Instrument :
 MSVOA_V
 ClientSampled :
 MDL-WATER-02

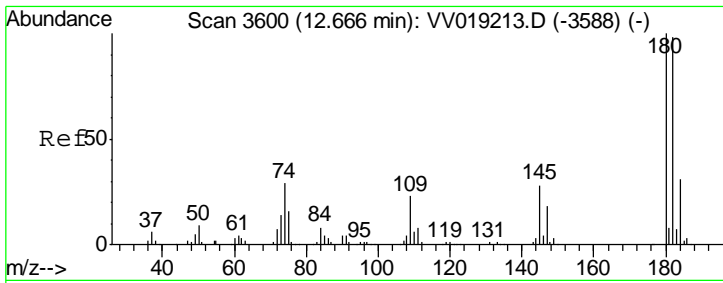
Tgt Ion	Resp	Lower	Upper
146	100		
111	41.9	32.6	48.8
148	62.0	50.1	75.1



#68
 1,2-Dibromo-3-chloropropane
 Concen: 2.227 ug/L
 RT: 12.45 min Scan# 3534
 Delta R.T. 0.00 min
 Lab File: VV019224.D
 Acq: 03 Nov 2020 02:27

Tgt Ion	Resp	Lower	Upper
75	100		
155	76.7	65.8	98.6
157	116.1	86.3	129.5

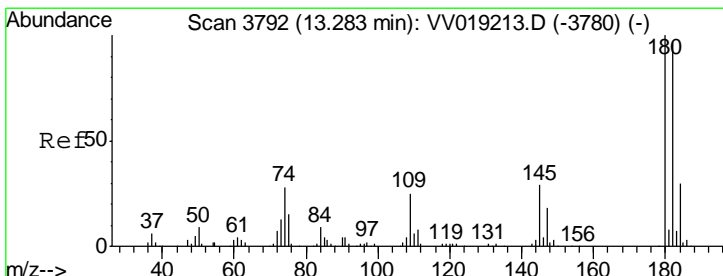
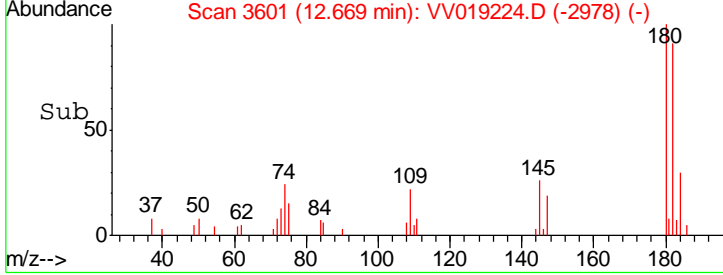
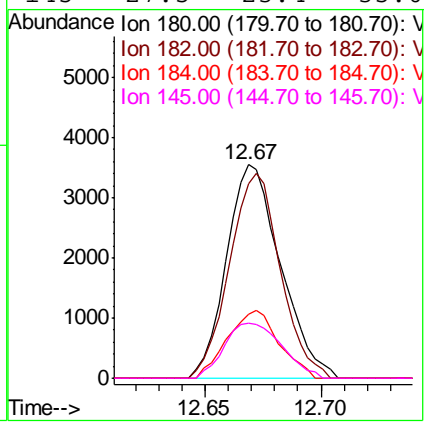
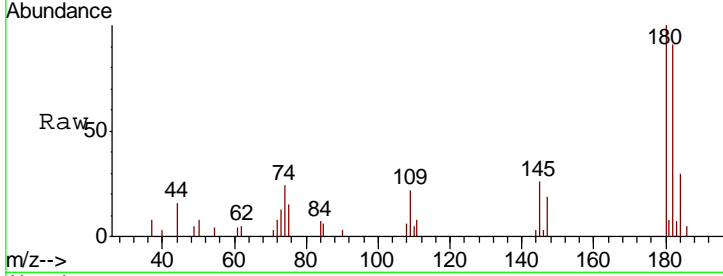




#69
 1,3,5-Trichlorobenzene
 Concen: 2.458 ug/L
 RT: 12.67 min Scan# 3601
 Delta R.T. 0.00 min
 Lab File: VV019224.D
 Acq: 03 Nov 2020 02:27

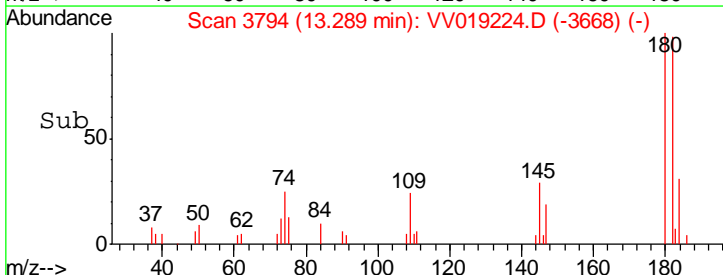
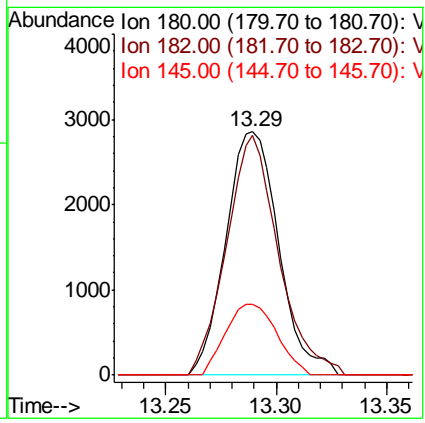
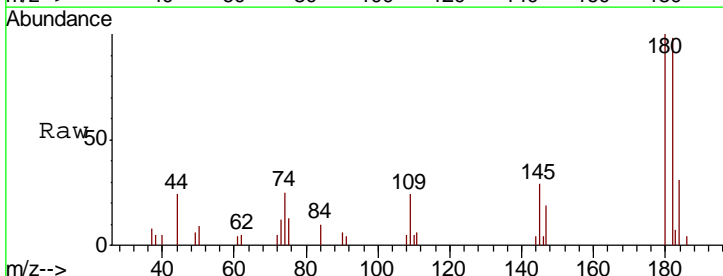
Instrument : MSVOA_V
 ClientSampled : MDL-WATER-02

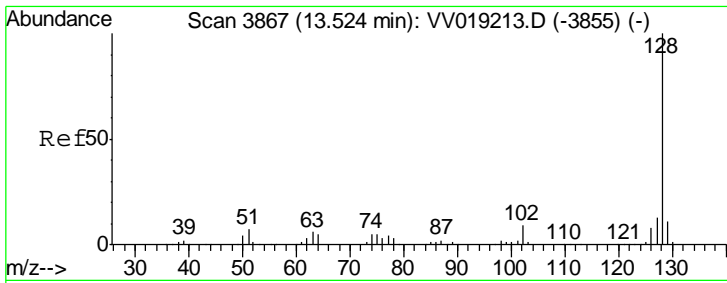
Tgt Ion	Resp	Lower	Upper
180	100		
182	90.3	77.7	116.5
184	30.2	24.9	37.3
145	27.5	23.4	35.0



#70
 1,2,4-trichlorobenzene
 Concen: 2.170 ug/L
 RT: 13.29 min Scan# 3794
 Delta R.T. 0.01 min
 Lab File: VV019224.D
 Acq: 03 Nov 2020 02:27

Tgt Ion	Resp	Lower	Upper
180	100		
182	96.5	76.6	114.8
145	28.3	23.2	34.8

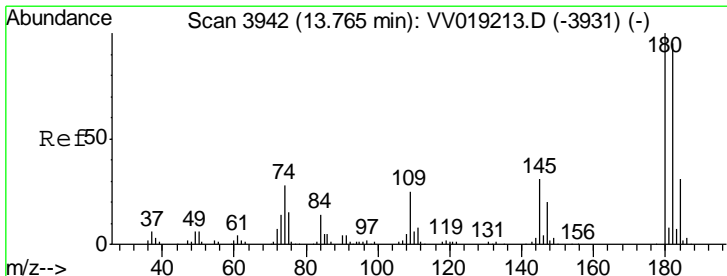
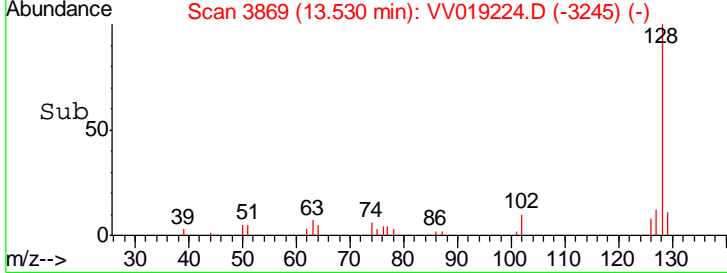
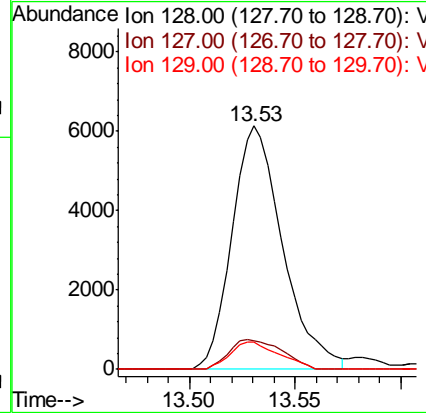
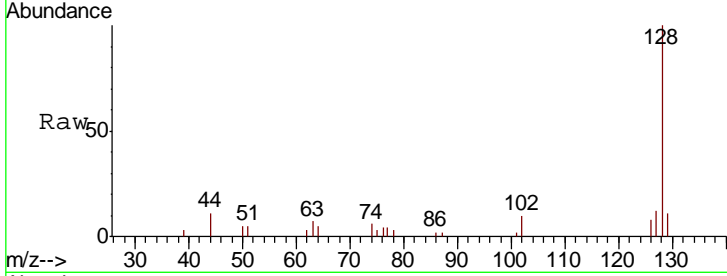




#71
 Naphthalene
 Concen: 1.650 ug/L
 RT: 13.53 min Scan# 3869
 Delta R.T. 0.01 min
 Lab File: VV019224.D
 Acq: 03 Nov 2020 02:27

Instrument :
 MSVOA_V
 ClientSampled :
 MDL-WATER-02

Tgt Ion	Resp	Lower	Upper
128	10218		
127	12.9	10.7	16.1
129	10.7	8.6	13.0



#72
 1,2,3-Trichlorobenzene
 Concen: 2.079 ug/L
 RT: 13.77 min Scan# 3944
 Delta R.T. 0.01 min
 Lab File: VV019224.D
 Acq: 03 Nov 2020 02:27

Tgt Ion	Resp	Lower	Upper
180	4525		
182	97.1	77.4	116.0
145	29.6	24.7	37.1

