

Data Path : Z:\voasrv\HPCHEM1\MSVOA_V\Data\VV110421\
 Data File : VV023209.D
 Acq On : 04 Nov 2021 17:56
 Operator : SY/MD
 Sample : M4445-11
 Misc : 25.0mL/MSVOA_V/WATER
 ALS Vial : 16 Sample Multiplier: 1

Instrument :
 MSVOA_V
 ClientSampleId :
 BG385

Integration Parameters: rteint.p
 Integrator: RTE
 Smoothing : ON Filtering: 5
 Sampling : 1 Min Area: 3 % of largest Peak
 Start Thrs: 0.1 Max Peaks: 100
 Stop Thrs : 0 Peak Location: TOP

If leading or trailing edge < 100 prefer < Baseline drop else tangent >
 Peak separation: 5

Method : Z:\voasrv\HPCHEM1\MSVOA_V\Method\SFAMVTR110421WMA.M
 Title : TRACE VOA SFAM1.0

Signal : TIC: VV023209.D\data.ms

peak #	R.T. min	first scan	max scan	last scan	PK TY	peak height	corr. area	corr. % max.	% of total
1	1.307	76	83	95	rVB	73097	75561	15.35%	1.925%
2	1.568	157	164	174	rBV	63583	69891	14.19%	1.780%
3	2.111	322	333	346	rBV	122669	177512	36.05%	4.521%
4	3.886	876	885	917	rBV2	48983	145308	29.51%	3.701%
5	4.352	1011	1030	1055	rBV	89356	223256	45.34%	5.686%
6	5.050	1230	1247	1276	rBV2	196025	492404	100.00%	12.542%
7	5.619	1412	1424	1454	rBV	153750	312680	63.50%	7.964%
8	6.069	1548	1564	1593	rBV	111739	236517	48.03%	6.024%
9	6.989	1838	1850	1864	rBV	53225	97040	19.71%	2.472%
10	7.317	1940	1952	1971	rBV	236577	412599	83.79%	10.509%
11	7.400	1972	1978	1989	rVB4	4762	8452	1.72%	0.215%
12	7.625	2039	2048	2073	rBV2	31603	59101	12.00%	1.505%
13	8.088	2180	2192	2226	rBV	211052	384008	77.99%	9.781%
14	8.854	2419	2430	2454	rBV	237100	387300	78.65%	9.865%
15	10.217	2843	2854	2871	rBV	76701	122989	24.98%	3.133%
16	11.249	3164	3175	3195	rBV	234054	363162	73.75%	9.250%
17	11.625	3280	3292	3315	rBV	225814	358294	72.76%	9.126%

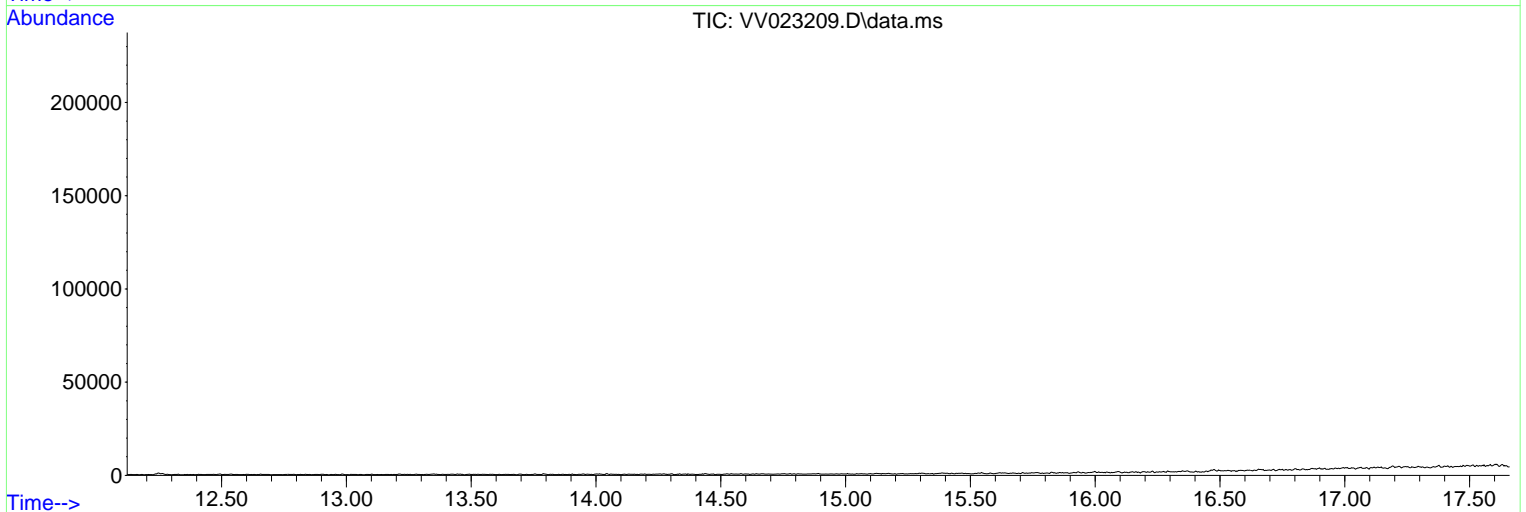
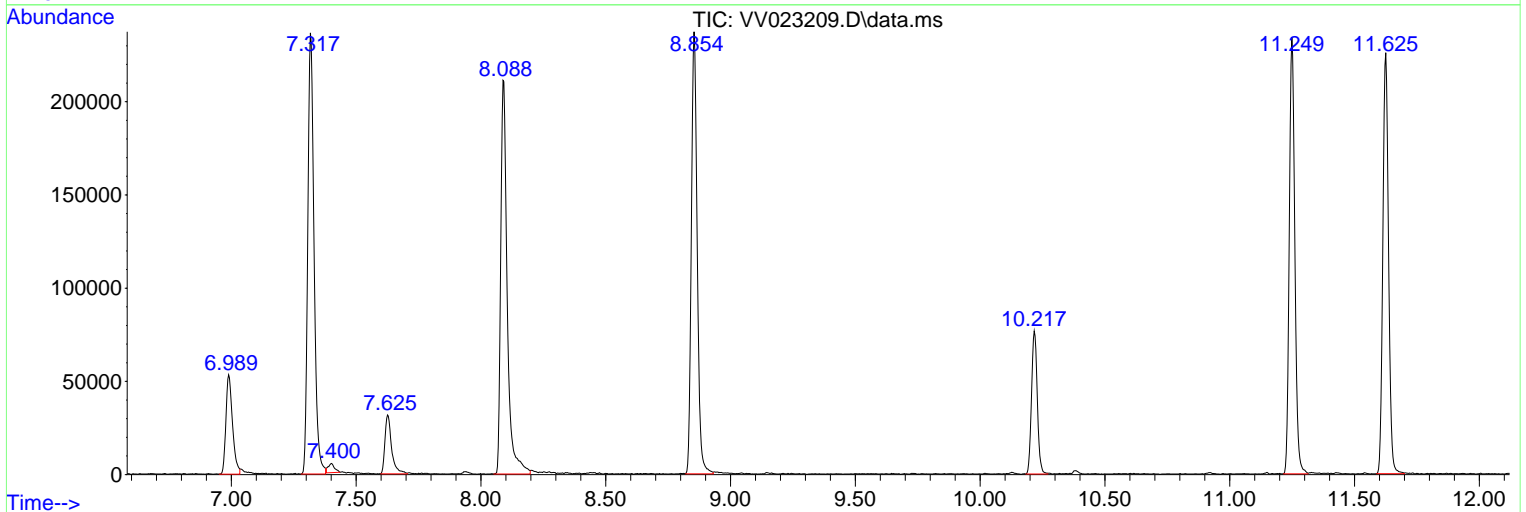
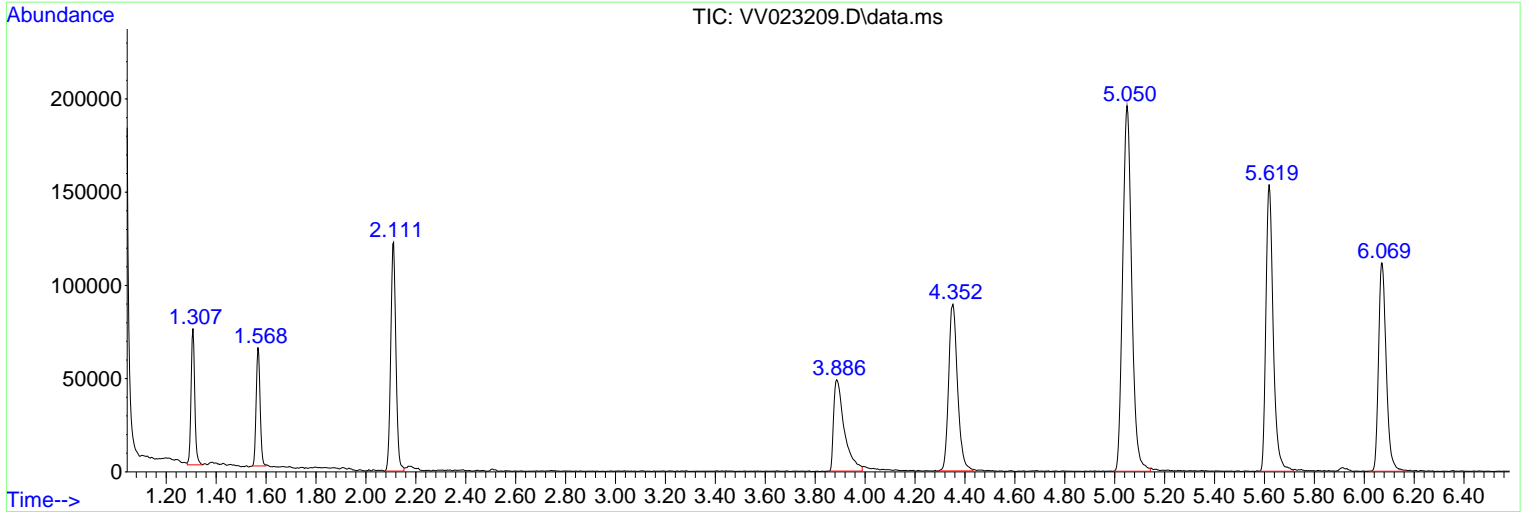
Sum of corrected areas: 3926074

Data Path : Z:\voasrv\HPCHEM1\MSVOA_V\Data\VV110421\
 Data File : VV023209.D
 Acq On : 04 Nov 2021 17:56
 Operator : SY/MD
 Sample : M4445-11
 Misc : 25.0mL/MSVOA_V/WATER
 ALS Vial : 16 Sample Multiplier: 1

Instrument :
 MSVOA_V
 ClientSampleId :
 BG385

Quant Method : Z:\voasrv\HPCHEM1\MSVOA_V\Method\SFAMVTR110421WMA.M
 Quant Title : TRACE VOA SFAM1.0

TIC Library : C:\Database\NIST20.L
 TIC Integration Parameters: LSCINT.P



Library Search Compound Report

Data Path : Z:\voasrv\HPCHEM1\MSVOA_V\Data\VV110421\
Data File : VV023209.D
Acq On : 04 Nov 2021 17:56
Operator : SY/MD
Sample : M4445-11
Misc : 25.0mL/MSVOA_V/WATER
ALS Vial : 16 Sample Multiplier: 1

Instrument :
MSVOA_V
ClientSampleId :
BG385

Quant Method : Z:\voasrv\HPCHEM1\MSVOA_V\Method\SFAMVTR110421WMA.M
Quant Title : TRACE VOA SFAM1.0

TIC Library : C:\Database\NIST20.L
TIC Integration Parameters: LSCINT.P

No Library Search Compounds Detected

Data Path : Z:\voasrv\HPCHEM1\MSVOA_V\Data\VV110421\
Data File : VV023209.D
Acq On : 04 Nov 2021 17:56
Operator : SY/MD
Sample : M4445-11
Misc : 25.0mL/MSVOA_V/WATER
ALS Vial : 16 Sample Multiplier: 1

Instrument :
MSVOA_V
ClientSampleId :
BG385

Quant Method : Z:\voasrv\HPCHEM1\MSVOA_V\Method\SFAMVTR110421WMA.M
Quant Title : TRACE VOA SFAM1.0

TIC Library : C:\Database\NIST0.L
TIC Integration Parameters: LSCINT.P

TIC Top Hit name	RT	EstConc	Units	Response	--Internal Standard--		
					#	RT	Resp Conc
