

Data Path : Z:\voasrv\HPCHEM1\MSVOA\_V\Data\VV110421\  
 Data File : VV023211.D  
 Acq On : 04 Nov 2021 18:43  
 Operator : SY/MD  
 Sample : M4445-13  
 Misc : 25.0mL/MSVOA\_V/WATER  
 ALS Vial : 18 Sample Multiplier: 1

Instrument :  
 MSVOA\_V  
 ClientSampleId :  
 BG387

Integration Parameters: rteint.p  
 Integrator: RTE  
 Smoothing : ON Filtering: 5  
 Sampling : 1 Min Area: 3 % of largest Peak  
 Start Thrs: 0.1 Max Peaks: 100  
 Stop Thrs : 0 Peak Location: TOP

If leading or trailing edge < 100 prefer < Baseline drop else tangent >  
 Peak separation: 5

Method : Z:\voasrv\HPCHEM1\MSVOA\_V\Method\SFAMVTR110421WMA.M  
 Title : TRACE VOA SFAM1.0

Signal : TIC: VV023211.D\data.ms

| peak # | R.T. min | first scan | max scan | last scan | PK TY | peak height | corr. area | corr. % max. | % of total |
|--------|----------|------------|----------|-----------|-------|-------------|------------|--------------|------------|
| 1      | 1.307    | 76         | 83       | 94        | rVB   | 73605       | 73640      | 15.61%       | 1.944%     |
| 2      | 1.568    | 156        | 164      | 175       | rBV   | 61670       | 68856      | 14.60%       | 1.818%     |
| 3      | 2.108    | 322        | 332      | 346       | rBV   | 116700      | 168120     | 35.65%       | 4.438%     |
| 4      | 3.889    | 876        | 886      | 914       | rBV   | 47695       | 142170     | 30.15%       | 3.753%     |
| 5      | 4.352    | 1013       | 1030     | 1053      | rBV2  | 84674       | 211550     | 44.86%       | 5.585%     |
| 6      | 5.050    | 1231       | 1247     | 1280      | rBV2  | 185863      | 471614     | 100.00%      | 12.451%    |
| 7      | 5.619    | 1413       | 1424     | 1448      | rBV   | 149354      | 306001     | 64.88%       | 8.079%     |
| 8      | 6.072    | 1547       | 1565     | 1595      | rBV2  | 107074      | 223485     | 47.39%       | 5.900%     |
| 9      | 6.989    | 1841       | 1850     | 1867      | rBV   | 50912       | 94921      | 20.13%       | 2.506%     |
| 10     | 7.317    | 1940       | 1952     | 1969      | rBV   | 223914      | 393292     | 83.39%       | 10.383%    |
| 11     | 7.397    | 1974       | 1977     | 1993      | rVB4  | 4721        | 9104       | 1.93%        | 0.240%     |
| 12     | 7.625    | 2038       | 2048     | 2070      | rBV3  | 29814       | 56092      | 11.89%       | 1.481%     |
| 13     | 8.091    | 2182       | 2193     | 2218      | rBV   | 201268      | 368596     | 78.16%       | 9.731%     |
| 14     | 8.853    | 2419       | 2430     | 2453      | rBV   | 237703      | 383096     | 81.23%       | 10.114%    |
| 15     | 10.217   | 2843       | 2854     | 2872      | rBV   | 73881       | 117391     | 24.89%       | 3.099%     |
| 16     | 11.249   | 3163       | 3175     | 3188      | rBV   | 232242      | 357215     | 75.74%       | 9.431%     |
| 17     | 11.625   | 3280       | 3292     | 3314      | rBV   | 217547      | 342699     | 72.67%       | 9.047%     |

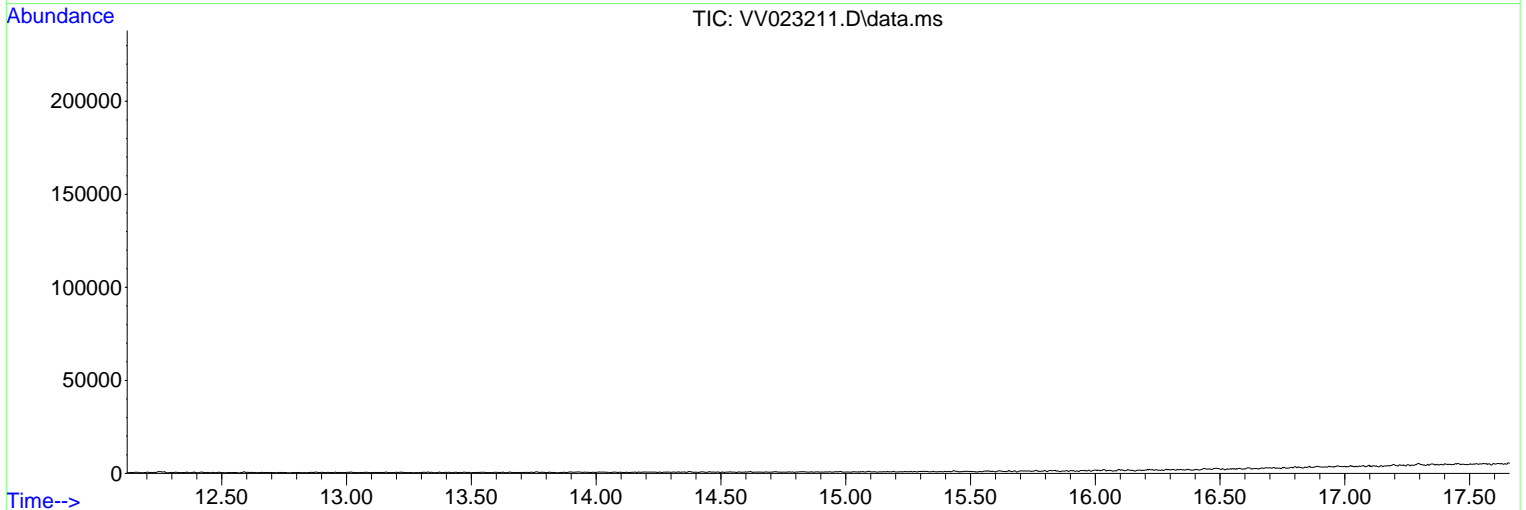
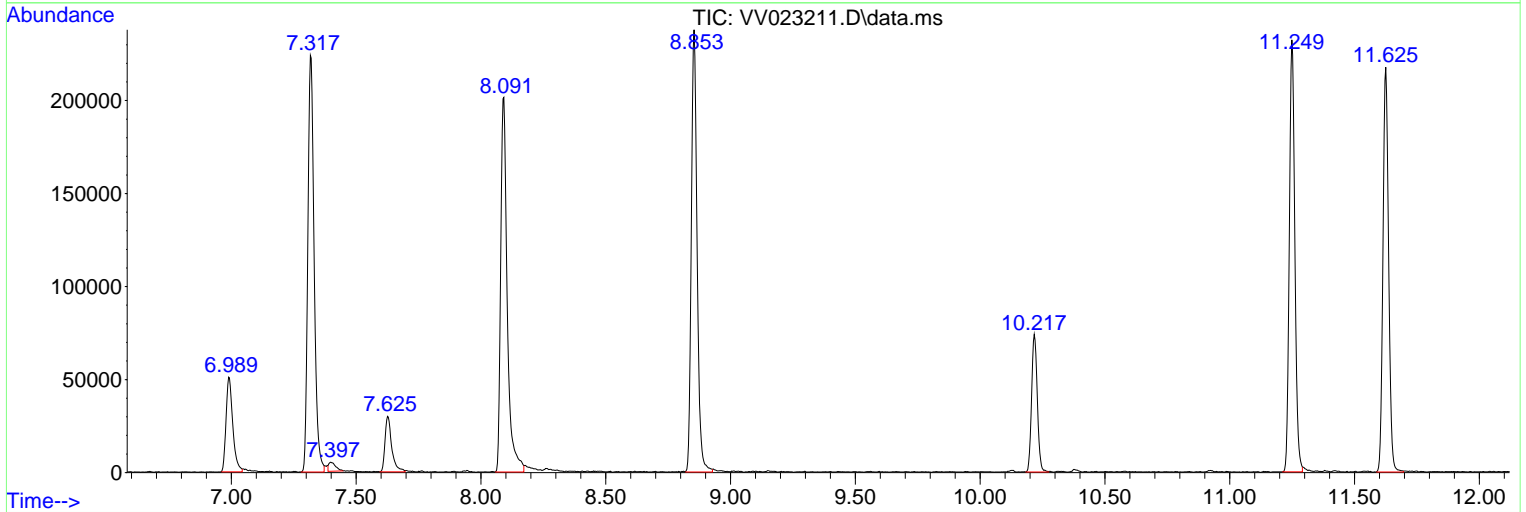
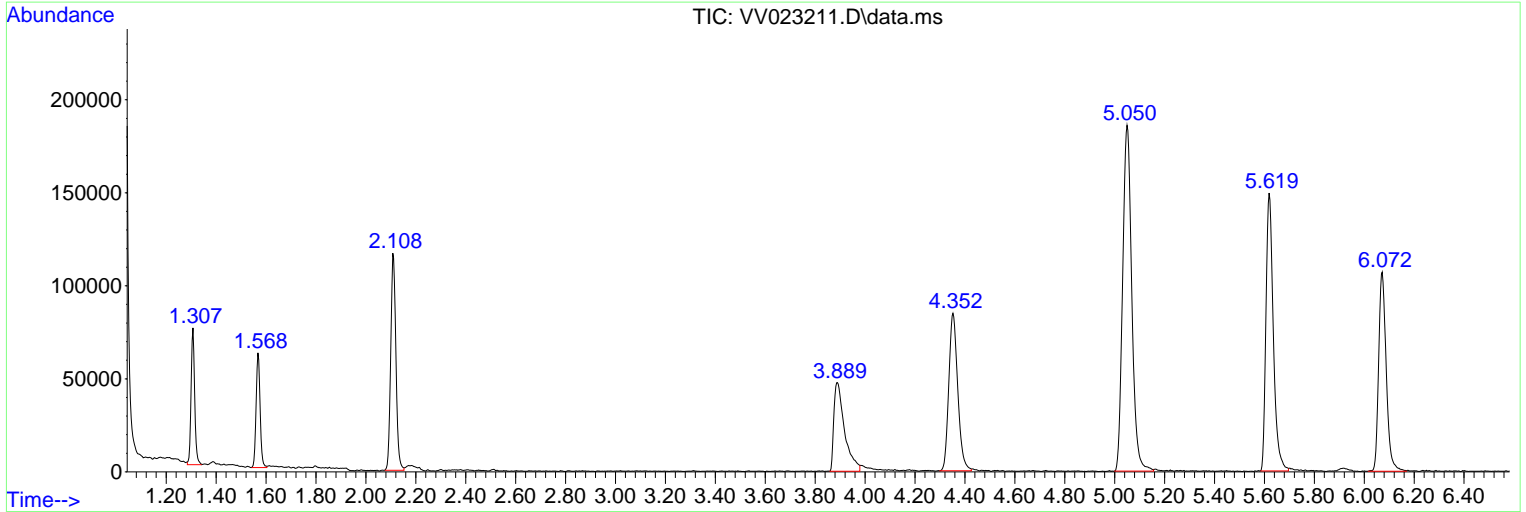
Sum of corrected areas: 3787842

Data Path : Z:\voasrv\HPCHEM1\MSVOA\_V\Data\VV110421\  
 Data File : VV023211.D  
 Acq On : 04 Nov 2021 18:43  
 Operator : SY/MD  
 Sample : M4445-13  
 Misc : 25.0mL/MSVOA\_V/WATER  
 ALS Vial : 18 Sample Multiplier: 1

Instrument :  
 MSVOA\_V  
 ClientSampleId :  
 BG387

Quant Method : Z:\voasrv\HPCHEM1\MSVOA\_V\Method\SFAMVTR110421WMA.M  
 Quant Title : TRACE VOA SFAM1.0

TIC Library : C:\Database\NIST20.L  
 TIC Integration Parameters: LSCINT.P



Library Search Compound Report

Data Path : Z:\voasrv\HPCHEM1\MSVOA\_V\Data\VV110421\  
Data File : VV023211.D  
Acq On : 04 Nov 2021 18:43  
Operator : SY/MD  
Sample : M4445-13  
Misc : 25.0mL/MSVOA\_V/WATER  
ALS Vial : 18 Sample Multiplier: 1

Instrument :  
MSVOA\_V  
ClientSampleId :  
BG387

Quant Method : Z:\voasrv\HPCHEM1\MSVOA\_V\Method\SFAMVTR110421WMA.M  
Quant Title : TRACE VOA SFAM1.0

TIC Library : C:\Database\NIST20.L  
TIC Integration Parameters: LSCINT.P

No Library Search Compounds Detected

\*\*\*\*\*

Data Path : Z:\voasrv\HPCHEM1\MSVOA\_V\Data\VV110421\  
Data File : VV023211.D  
Acq On : 04 Nov 2021 18:43  
Operator : SY/MD  
Sample : M4445-13  
Misc : 25.0mL/MSVOA\_V/WATER  
ALS Vial : 18 Sample Multiplier: 1

Instrument :  
MSVOA\_V  
ClientSampleId :  
BG387

Quant Method : Z:\voasrv\HPCHEM1\MSVOA\_V\Method\SFAMVTR110421WMA.M  
Quant Title : TRACE VOA SFAM1.0

TIC Library : C:\Database\NIST0.L  
TIC Integration Parameters: LSCINT.P

| TIC Top Hit name | RT | EstConc | Units | Response | --Internal Standard-- |    |           |
|------------------|----|---------|-------|----------|-----------------------|----|-----------|
|                  |    |         |       |          | #                     | RT | Resp Conc |

---