

Data Path : Z:\voasrv\HPCHEM1\MSVOA_V\Data\VW110521\
 Data File : VV023250.D
 Acq On : 05 Nov 2021 22:38
 Operator : SY/MD
 Sample : M4535-15
 Misc : 25.0mL/MSVOA_V/WATER
 ALS Vial : 34 Sample Multiplier: 1

Instrument :
 MSVOA_V
 ClientSampleId :

Quant Time: Nov 08 06:46:33 2021
 Quant Method : Z:\voasrv\HPCHEM1\MSVOA_V\Method\SFAMVTR110421WMA.M
 Quant Title : TRACE VOA SFAM1.0
 QLast Update : Mon Nov 08 06:44:32 2021
 Response via : Initial Calibration

Compound	R.T.	QIon	Response	Conc	Units	Dev(Min)

Internal Standards						
1) 1,4-Difluorobenzene	5.619	114	126874	5.000	ug/L	0.00
28) Chlorobenzene-d5	8.853	117	126711	5.000	ug/L	0.00
58) 1,4-Dichlorobenzene-d4	11.252	152	58833	5.000	ug/L	0.00
System Monitoring Compounds						
4) Vinyl Chloride-d3	1.307	65	36564	4.600	ug/L	0.00
Spiked Amount	5.000	Range 40 - 130	Recovery	=	92.000%	
7) Chloroethane-d5	1.568	69	32139	4.961	ug/L	0.00
Spiked Amount	5.000	Range 65 - 130	Recovery	=	99.200%	
11) 1,1-Dichloroethene-d2	2.111	63	53395	3.589	ug/L	0.00
Spiked Amount	5.000	Range 60 - 125	Recovery	=	71.800%	
20) 2-Butanone-d5	3.895	46	82492	68.694	ug/L	-0.01
Spiked Amount	50.000	Range 40 - 130	Recovery	=	137.380%#	
24) Chloroform-d	4.349	84	81944	4.838	ug/L	0.00
Spiked Amount	5.000	Range 70 - 125	Recovery	=	96.800%	
26) 1,2-Dichloroethane-d4	5.037	65	38760	5.089	ug/L	0.00
Spiked Amount	5.000	Range 70 - 130	Recovery	=	101.800%	
32) Benzene-d6	5.053	84	153412	4.719	ug/L	0.00
Spiked Amount	5.000	Range 70 - 125	Recovery	=	94.400%	
36) 1,2-Dichloropropane-d6	6.072	67	47709	4.985	ug/L	0.00
Spiked Amount	5.000	Range 60 - 140	Recovery	=	99.800%	
41) Toluene-d8	7.317	98	133015	4.366	ug/L	0.00
Spiked Amount	5.000	Range 70 - 130	Recovery	=	87.400%	
43) trans-1,3-Dichloroprop...	7.625	79	16831	4.638	ug/L	0.00
Spiked Amount	5.000	Range 55 - 130	Recovery	=	92.800%	
46) 2-Hexanone-d5	8.088	63	58612	43.898	ug/L	0.00
Spiked Amount	50.000	Range 45 - 130	Recovery	=	87.800%	
56) 1,1,2,2-Tetrachloroeth...	10.217	84	32531	4.727	ug/L	0.00
Spiked Amount	5.000	Range 65 - 120	Recovery	=	94.600%	
66) 1,2-Dichlorobenzene-d4	11.625	152	50916	5.197	ug/L	0.00
Spiked Amount	5.000	Range 80 - 120	Recovery	=	104.000%	

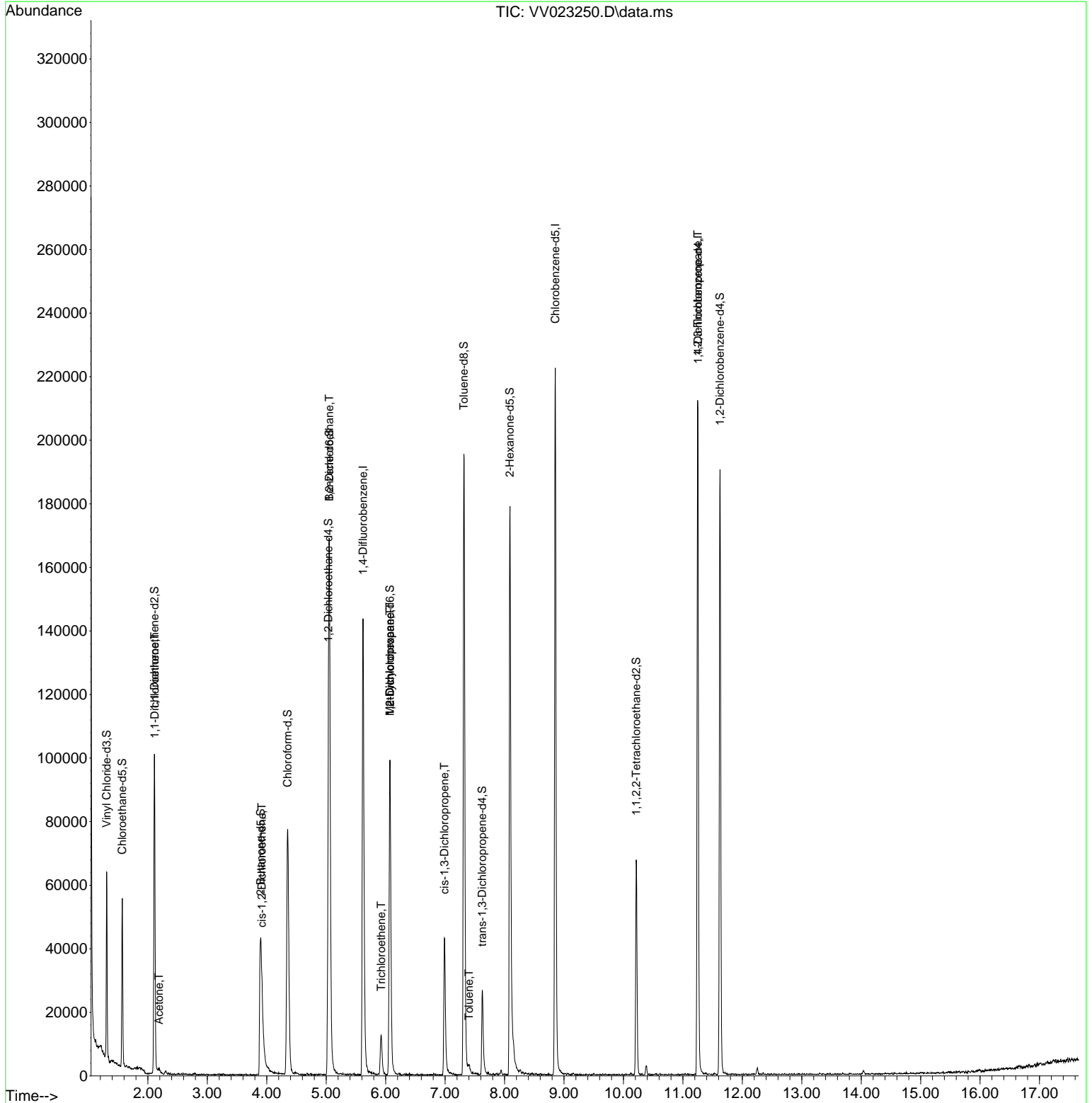
Target Compounds						Qvalue
12) 1,1-Dichloroethene	2.114	96	523	0.069	ug/L #	1
13) Acetone	2.188	43	2368	2.667	ug/L	81
22) cis-1,2-Dichloroethene	3.915	96	3425	0.383	ug/L	97
27) 1,2-Dichloroethane	5.053	62	943	0.106	ug/L #	73
34) Trichloroethene	5.924	95	4160	0.442	ug/L	93
35) Methylcyclohexane	6.072	83	11830	0.796	ug/L #	19
37) 1,2-Dichloropropane	6.072	63	5210	0.630	ug/L #	83
39) cis-1,3-Dichloropropene	6.989	75	1383	0.116	ug/L	87
42) Toluene	7.403	91	2293	0.061	ug/L	95
61) 1,2,3-Trichloropropane	11.249	75	6321	1.617	ug/L #	65

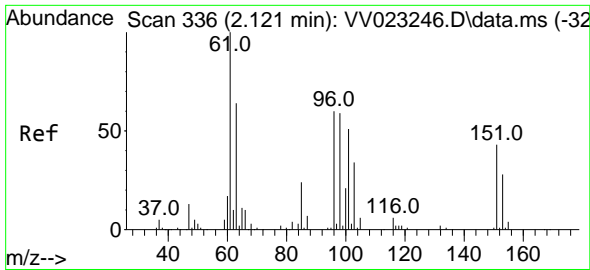
(#) = qualifier out of range (m) = manual integration (+) = signals summed

Data Path : Z:\voasrv\HPCHEM1\MSVOA_V\Data\VV110521\
 Data File : VV023250.D
 Acq On : 05 Nov 2021 22:38
 Operator : SY/MD
 Sample : M4535-15
 Misc : 25.0mL/MSVOA_V/WATER
 ALS Vial : 34 Sample Multiplier: 1

Instrument :
 MSVOA_V
 ClientSampleId :

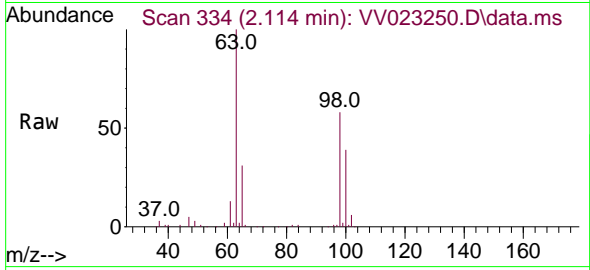
Quant Time: Nov 08 06:46:33 2021
 Quant Method : Z:\voasrv\HPCHEM1\MSVOA_V\Method\SFAMVTR110421WMA.M
 Quant Title : TRACE VOA SFAM1.0
 QLast Update : Mon Nov 08 06:44:32 2021
 Response via : Initial Calibration



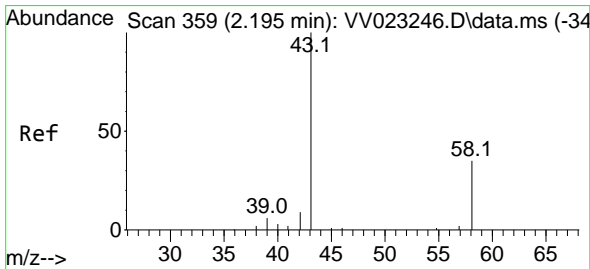
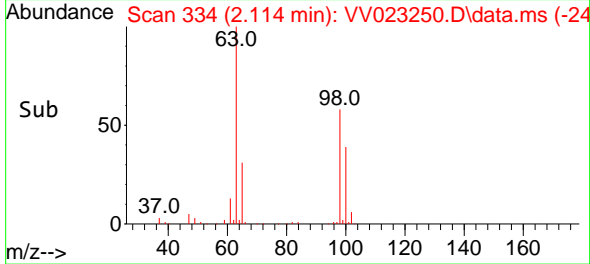
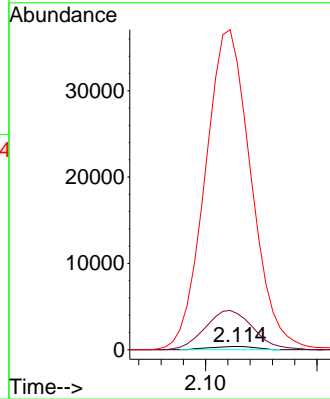


#12
 1,1-Dichloroethene
 Concen: 0.069 ug/L
 RT: 2.114 min Scan# 311
 Delta R.T. -0.007 min
 Lab File: VV023250.D
 Acq: 05 Nov 2021 22:38

Instrument : MSVOA_V
 ClientSampleId :

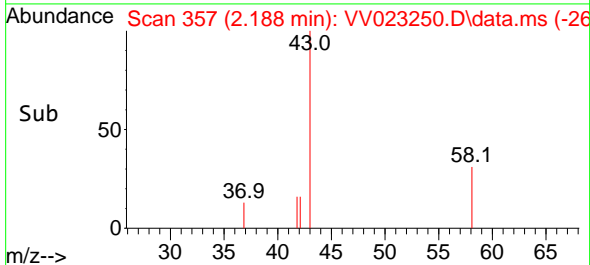
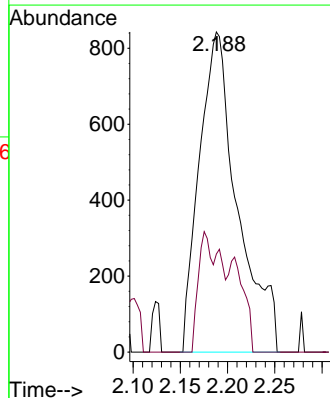
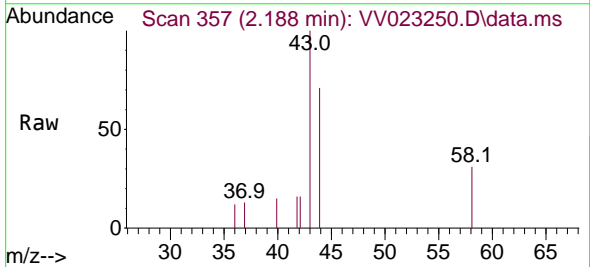


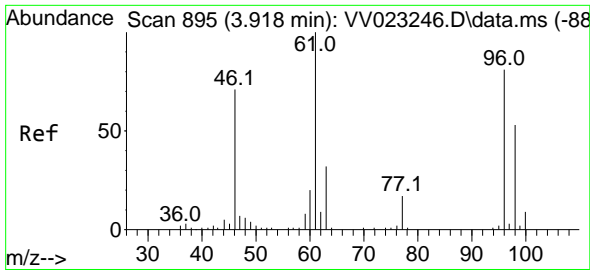
Tgt Ion: 96 Resp: 523
 Ion Ratio Lower Upper
 96 100
 61 1140.8 117.7 218.7#
 63 9056.5 80.5 149.5#



#13
 Acetone
 Concen: 2.667 ug/L
 RT: 2.188 min Scan# 357
 Delta R.T. -0.007 min
 Lab File: VV023250.D
 Acq: 05 Nov 2021 22:38

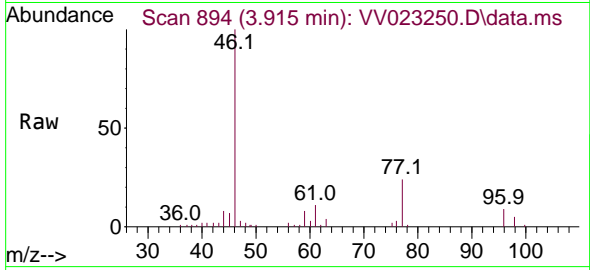
Tgt Ion: 43 Resp: 2368
 Ion Ratio Lower Upper
 43 100
 58 13.6 0.0 45.8



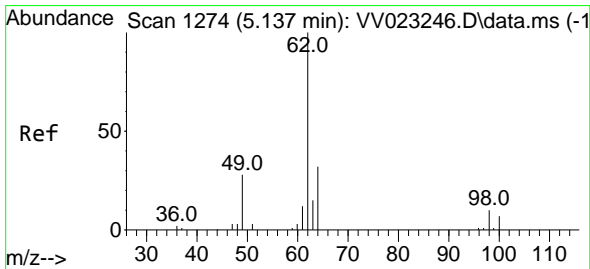
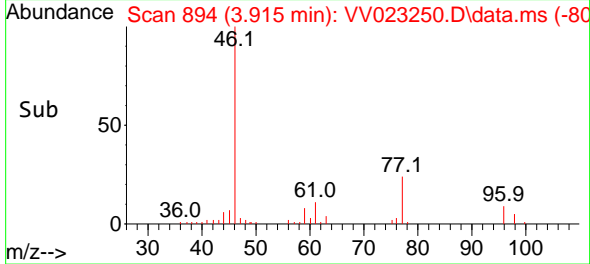
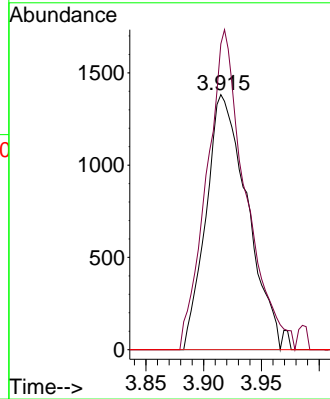


#22
 cis-1,2-Dichloroethene
 Concen: 0.383 ug/L
 RT: 3.915 min Scan# 895
 Delta R.T. -0.003 min
 Lab File: VV023250.D
 Acq: 05 Nov 2021 22:38

Instrument :
 MSVOA_V
 ClientSampleId :

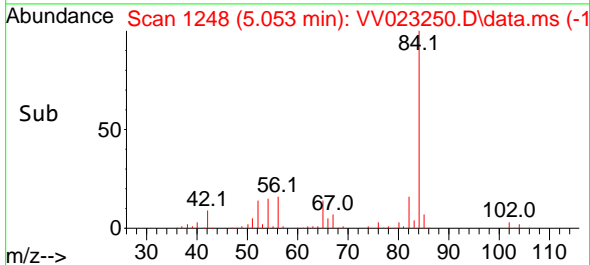
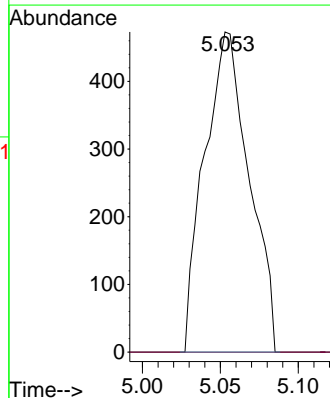
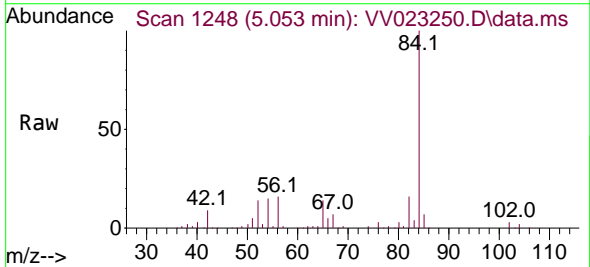


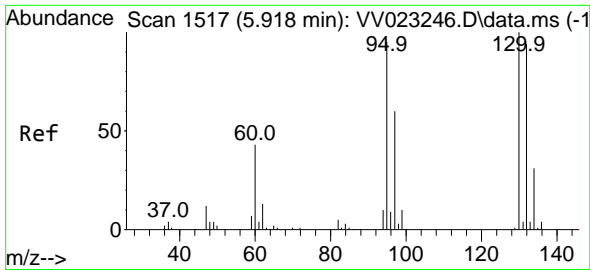
Tgt Ion: 96 Resp: 3425
 Ion Ratio Lower Upper
 96 100
 61 119.9 86.7 160.9
 68 0.0 0.0 0.0



#27
 1,2-Dichloroethane
 Concen: 0.106 ug/L
 RT: 5.053 min Scan# 1248
 Delta R.T. -0.084 min
 Lab File: VV023250.D
 Acq: 05 Nov 2021 22:38

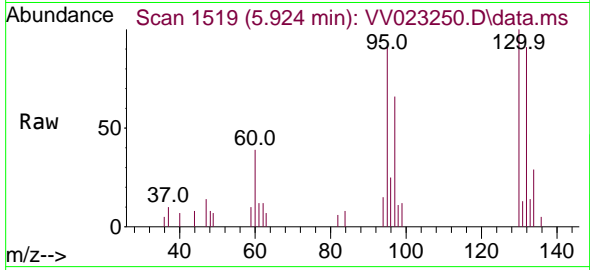
Tgt Ion: 62 Resp: 943
 Ion Ratio Lower Upper
 62 100
 98 0.0 8.2 12.2#





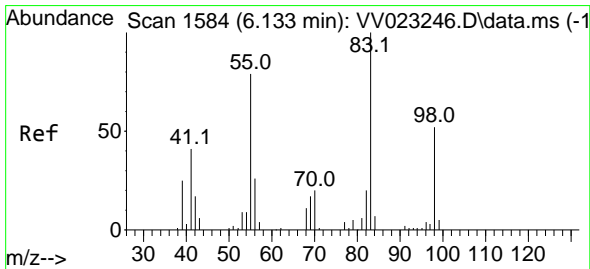
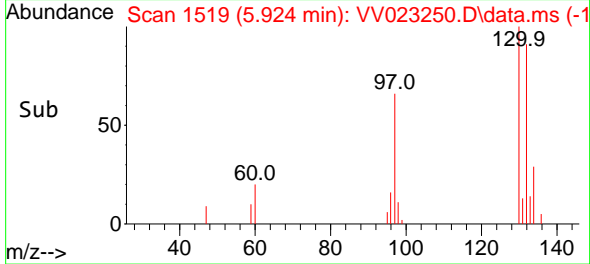
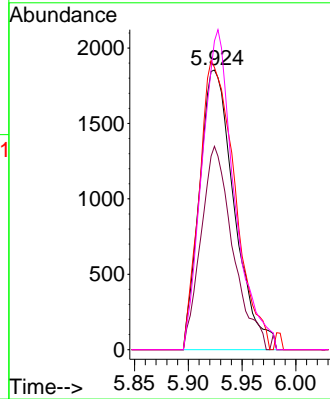
#34
 Trichloroethene
 Concen: 0.442 ug/L
 RT: 5.924 min Scan# 1519
 Delta R.T. 0.006 min
 Lab File: VV023250.D
 Acq: 05 Nov 2021 22:38

Instrument : MSVOA_V
 ClientSampleId :



Tgt Ion: 95 Resp: 4160

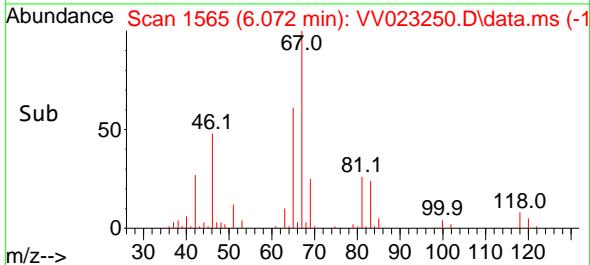
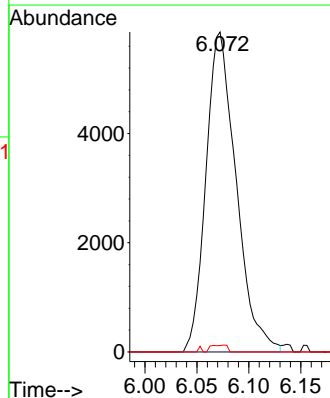
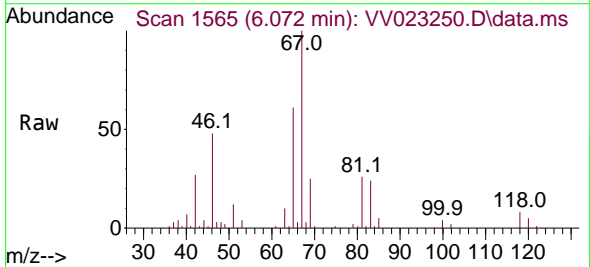
Ion	Ratio	Lower	Upper
95	100		
97	72.7	43.3	80.5
132	100.9	70.0	130.0
130	110.4	71.0	131.8

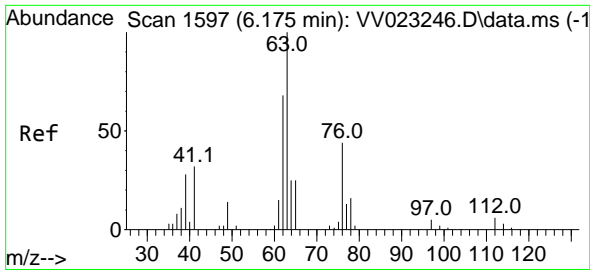


#35
 Methylcyclohexane
 Concen: 0.796 ug/L
 RT: 6.072 min Scan# 1565
 Delta R.T. -0.061 min
 Lab File: VV023250.D
 Acq: 05 Nov 2021 22:38

Tgt Ion: 83 Resp: 11830

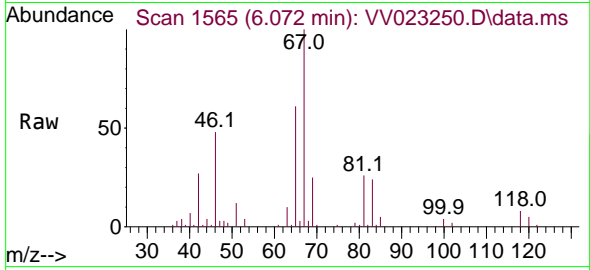
Ion	Ratio	Lower	Upper
83	100		
55	0.0	59.6	89.4#
98	1.1	40.6	61.0#



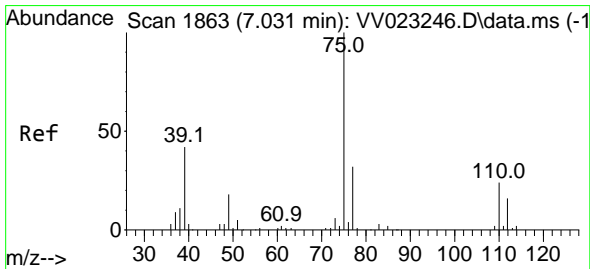
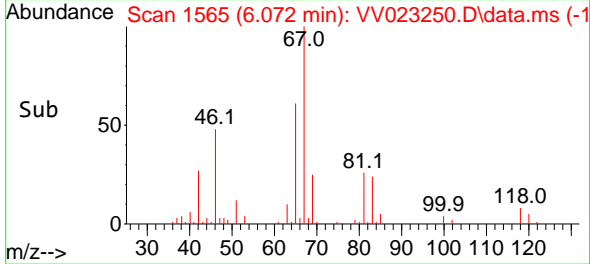
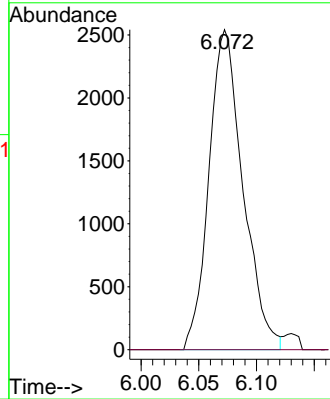


#37
 1,2-Dichloropropane
 Concen: 0.630 ug/L
 RT: 6.072 min Scan# 11
 Delta R.T. -0.103 min
 Lab File: VV023250.D
 Acq: 05 Nov 2021 22:38

Instrument :
 MSVOA_V
 ClientSampleId :

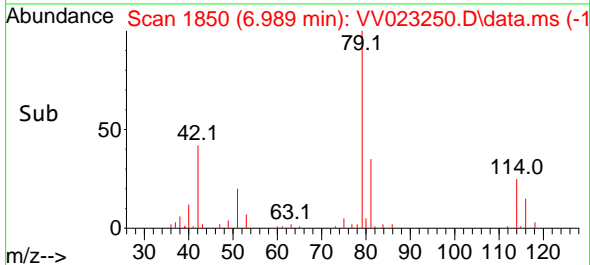
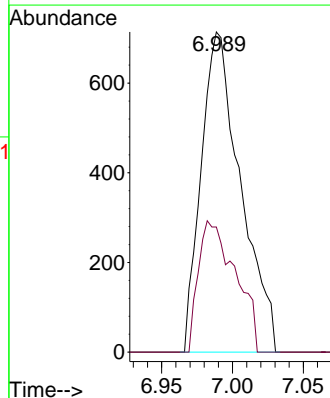
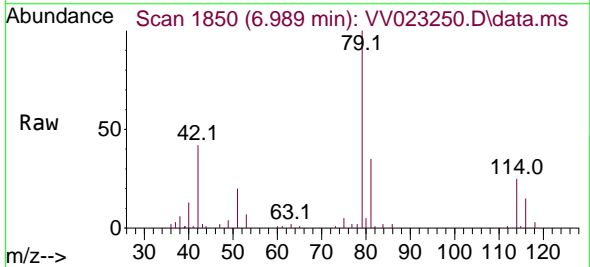


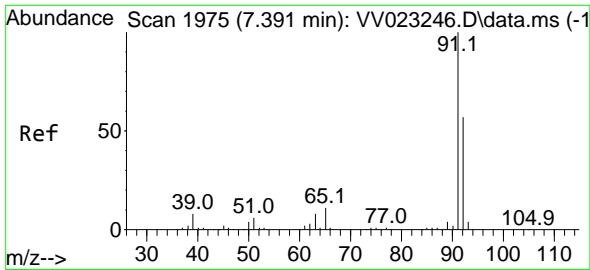
Tgt Ion: 63 Resp: 5210
 Ion Ratio Lower Upper
 63 100
 112 0.0 4.5 6.7#



#39
 cis-1,3-Dichloropropene
 Concen: 0.116 ug/L
 RT: 6.989 min Scan# 1850
 Delta R.T. -0.042 min
 Lab File: VV023250.D
 Acq: 05 Nov 2021 22:38

Tgt Ion: 75 Resp: 1383
 Ion Ratio Lower Upper
 75 100
 77 39.1 22.3 41.3

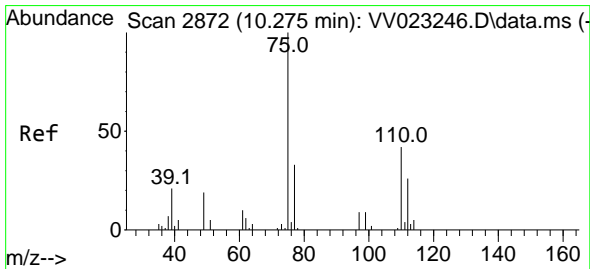
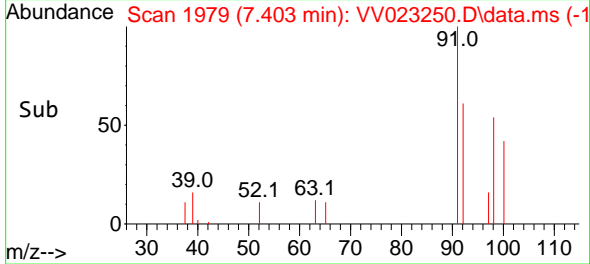
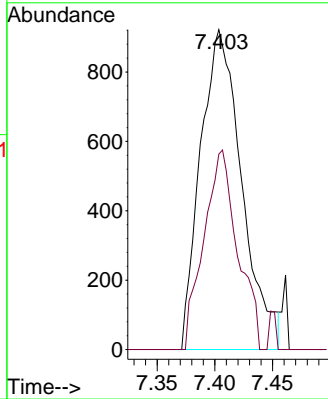
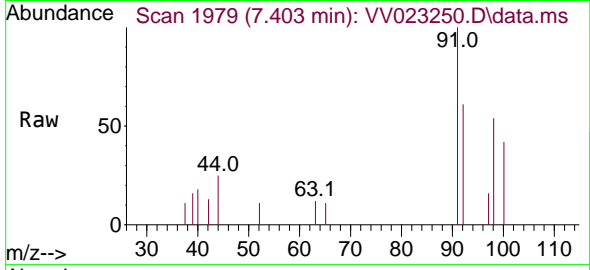




#42
 Toluene
 Concen: 0.061 ug/L
 RT: 7.403 min Scan# 1975
 Delta R.T. 0.013 min
 Lab File: VV023250.D
 Acq: 05 Nov 2021 22:38

Instrument : MSVOA_V
 ClientSampleId :

Tgt Ion: 91 Resp: 2293
 Ion Ratio Lower Upper
 91 100
 92 61.1 40.4 75.0



#61
 1,2,3-Trichloropropane
 Concen: 1.617 ug/L
 RT: 11.249 min Scan# 3175
 Delta R.T. 0.974 min
 Lab File: VV023250.D
 Acq: 05 Nov 2021 22:38

Tgt Ion: 75 Resp: 6321
 Ion Ratio Lower Upper
 75 100
 77 33.9 26.6 39.8
 110 2.1 33.0 49.4#

