

Data Path : Z:\voasrv\HPCHEM1\MSVOA_V\Data\VW110521\
 Data File : VV023265.D
 Acq On : 06 Nov 2021 04:27
 Operator : SY/MD
 Sample : M4545-01
 Misc : 25.0mL/MSVOA_V/WATER
 ALS Vial : 49 Sample Multiplier: 1

Instrument :
 MSVOA_V
 ClientSampleId :
 H4605

Quant Time: Nov 09 04:45:07 2021
 Quant Method : Z:\voasrv\HPCHEM1\MSVOA_V\Method\SFAMVTR110421WMA.M
 Quant Title : TRACE VOA SFAM1.0
 QLast Update : Tue Nov 09 03:48:20 2021
 Response via : Initial Calibration

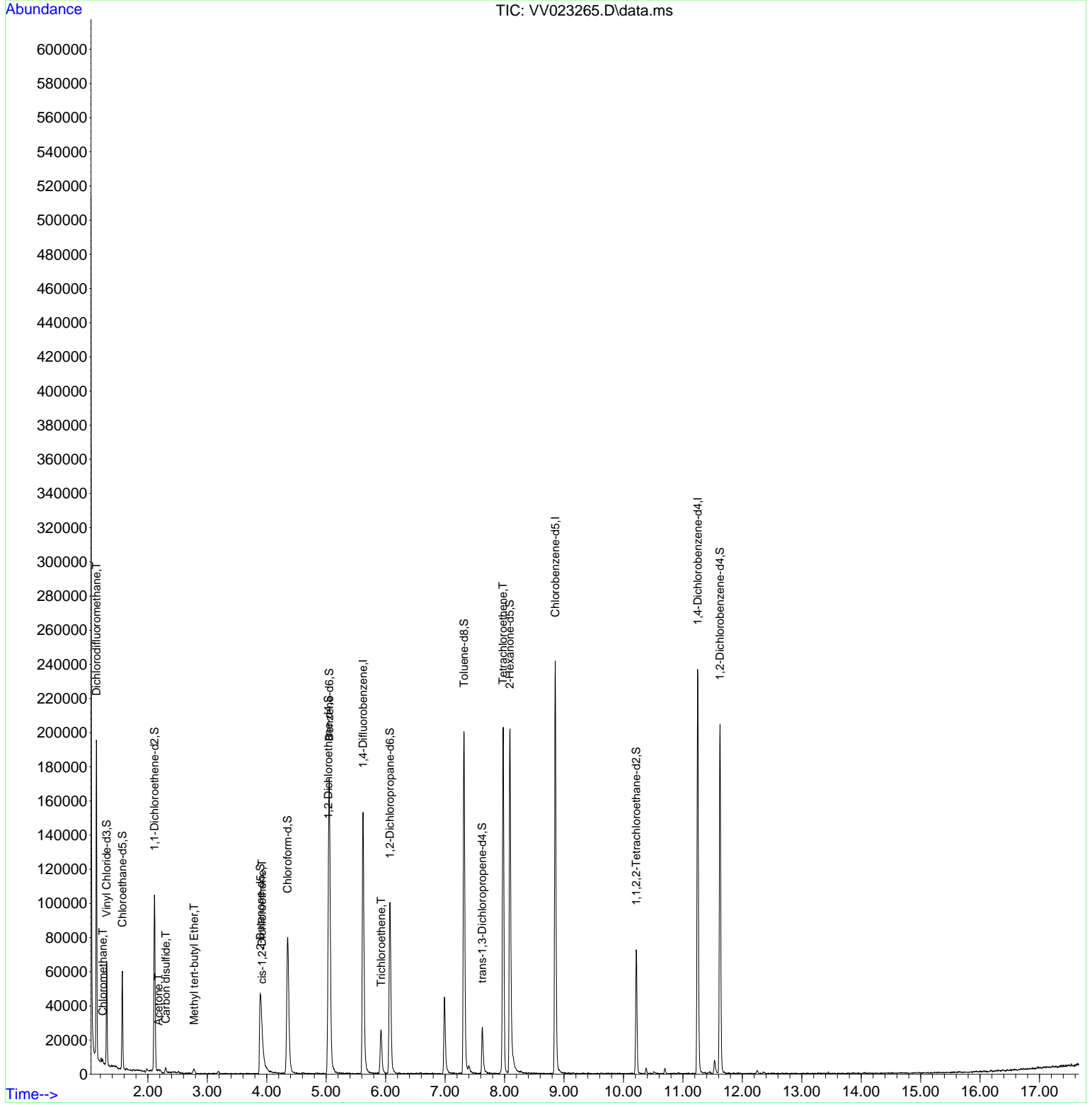
Compound	R.T.	QIon	Response	Conc	Units	Dev(Min)
Internal Standards						
1) 1,4-Difluorobenzene	5.619	114	134624	5.000	ug/L	0.00
28) Chlorobenzene-d5	8.854	117	136984	5.000	ug/L	0.00
58) 1,4-Dichlorobenzene-d4	11.249	152	64244	5.000	ug/L	0.00
System Monitoring Compounds						
4) Vinyl Chloride-d3	1.307	65	37020	4.390	ug/L	0.00
Spiked Amount	5.000	Range 40 - 130	Recovery	=	87.800%	
7) Chloroethane-d5	1.571	69	34158	4.969	ug/L	0.00
Spiked Amount	5.000	Range 65 - 130	Recovery	=	99.400%	
11) 1,1-Dichloroethene-d2	2.111	63	53412	3.383	ug/L	0.00
Spiked Amount	5.000	Range 60 - 125	Recovery	=	67.600%	
20) 2-Butanone-d5	3.892	46	90141	62.039	ug/L	-0.02
Spiked Amount	50.000	Range 40 - 130	Recovery	=	124.080%	
24) Chloroform-d	4.352	84	82445	4.587	ug/L	0.00
Spiked Amount	5.000	Range 70 - 125	Recovery	=	91.800%	
26) 1,2-Dichloroethane-d4	5.037	65	39065	4.833	ug/L	0.00
Spiked Amount	5.000	Range 70 - 130	Recovery	=	96.600%	
32) Benzene-d6	5.053	84	157506	4.481	ug/L	0.00
Spiked Amount	5.000	Range 70 - 125	Recovery	=	89.600%	
36) 1,2-Dichloropropane-d6	6.072	67	49599	4.794	ug/L	0.00
Spiked Amount	5.000	Range 60 - 140	Recovery	=	95.800%	
41) Toluene-d8	7.317	98	134430	4.082	ug/L	0.00
Spiked Amount	5.000	Range 70 - 130	Recovery	=	81.600%	
43) trans-1,3-Dichloroprop...	7.625	79	16340	4.165	ug/L	0.00
Spiked Amount	5.000	Range 55 - 130	Recovery	=	83.200%	
46) 2-Hexanone-d5	8.088	63	66317	45.944	ug/L	0.00
Spiked Amount	50.000	Range 45 - 130	Recovery	=	91.880%	
56) 1,1,2,2-Tetrachloroeth...	10.217	84	33442	4.495	ug/L	0.00
Spiked Amount	5.000	Range 65 - 120	Recovery	=	89.800%	
66) 1,2-Dichlorobenzene-d4	11.625	152	53003	4.955	ug/L	0.00
Spiked Amount	5.000	Range 80 - 120	Recovery	=	99.000%	
Target Compounds						
2) Dichlorodifluoromethane	1.134	85	2280	0.174	ug/L #	80
3) Chloromethane	1.243	50	1079	0.097	ug/L	97
13) Acetone	2.179	43	2863	3.225	ug/L	97
14) Carbon disulfide	2.301	76	3711	0.122	ug/L #	87
17) Methyl tert-butyl Ether	2.777	73	2408	0.136	ug/L #	89
22) cis-1,2-Dichloroethene	3.921	96	1646	0.173	ug/L #	86
34) Trichloroethene	5.924	95	8950	0.879	ug/L	93
47) Tetrachloroethene	7.976	164	45971	5.210	ug/L	99

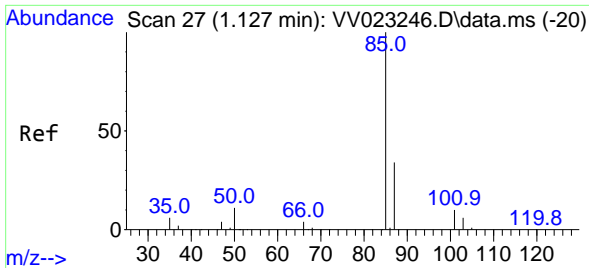
(#) = qualifier out of range (m) = manual integration (+) = signals summed

Data Path : Z:\voasrv\HPCHEM1\MSVOA_V\Data\VV110521\
 Data File : VV023265.D
 Acq On : 06 Nov 2021 04:27
 Operator : SY/MD
 Sample : M4545-01
 Misc : 25.0mL/MSVOA_V/WATER
 ALS Vial : 49 Sample Multiplier: 1

Instrument :
 MSVOA_V
 ClientSampleId :
 H4605

Quant Time: Nov 09 04:45:07 2021
 Quant Method : Z:\voasrv\HPCHEM1\MSVOA_V\Method\SFAMVTR110421WMA.M
 Quant Title : TRACE VOA SFAM1.0
 QLast Update : Tue Nov 09 03:48:20 2021
 Response via : Initial Calibration

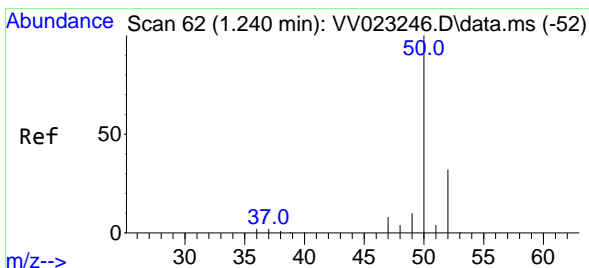
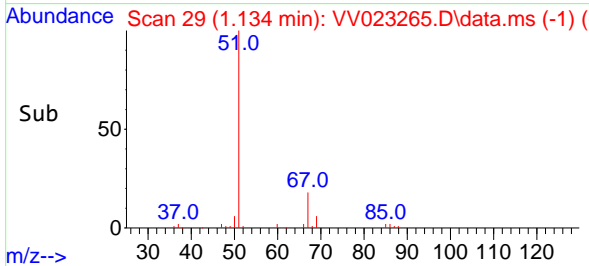
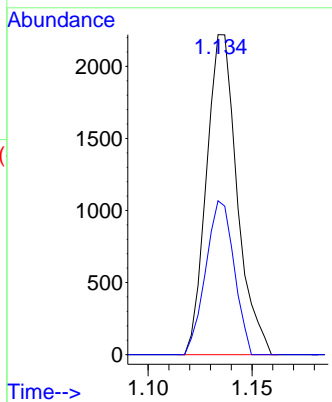
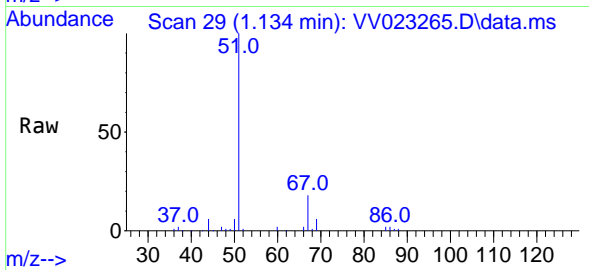




#2
 Dichlorodifluoromethane
 Concen: 0.174 ug/L
 RT: 1.134 min Scan# 29
 Delta R.T. 0.006 min
 Lab File: VV023265.D
 Acq: 06 Nov 2021 04:27

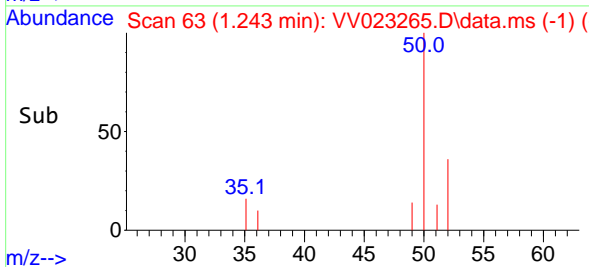
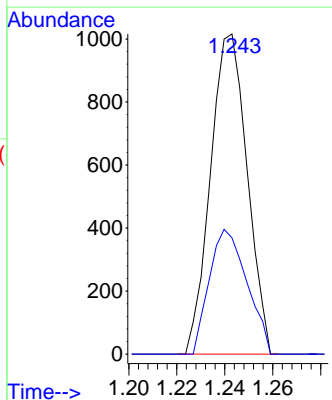
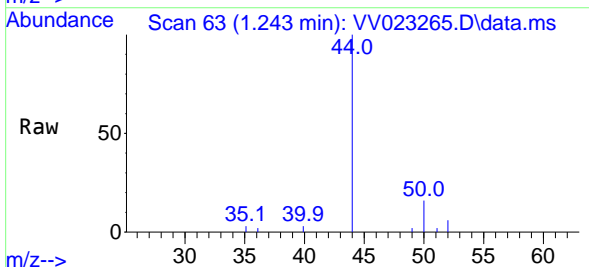
Instrument : MSVOA_V
 ClientSampleId : H4605

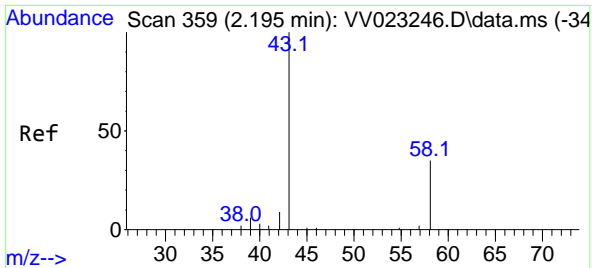
Tgt Ion: 85 Resp: 2280
 Ion Ratio Lower Upper
 85 100
 87 44.3 26.6 39.8#



#3
 Chloromethane
 Concen: 0.097 ug/L
 RT: 1.243 min Scan# 63
 Delta R.T. 0.003 min
 Lab File: VV023265.D
 Acq: 06 Nov 2021 04:27

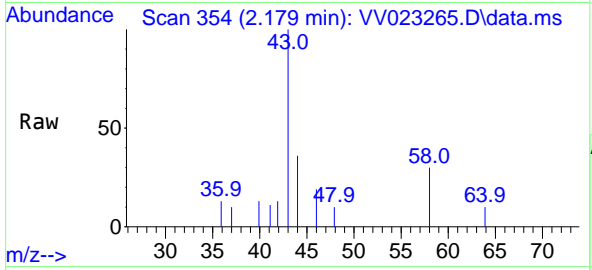
Tgt Ion: 50 Resp: 1079
 Ion Ratio Lower Upper
 50 100
 52 36.3 24.3 45.1



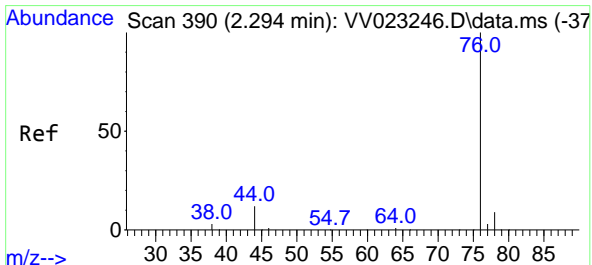
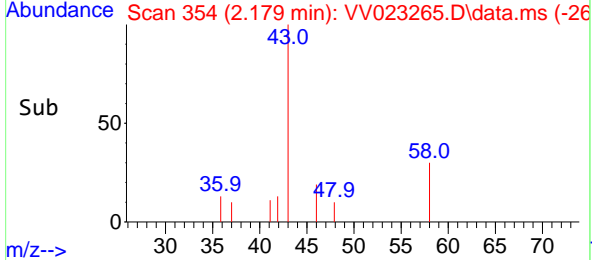
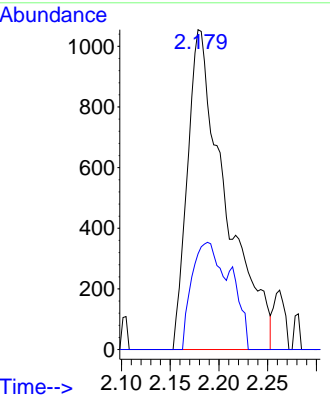


#13
 Acetone
 Concen: 3.225 ug/L
 RT: 2.179 min Scan# 311
 Delta R.T. -0.016 min
 Lab File: VV023265.D
 Acq: 06 Nov 2021 04:27

Instrument : MSVOA_V
 ClientSampleId : H4605

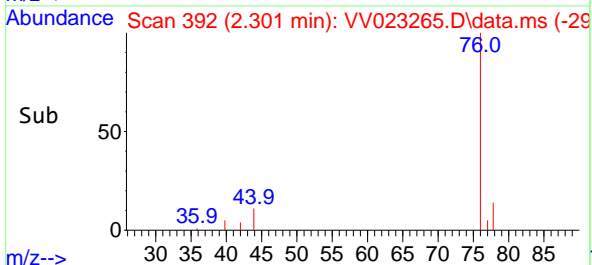
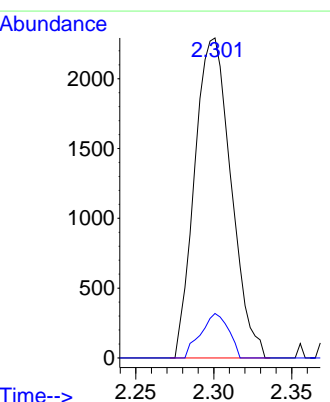
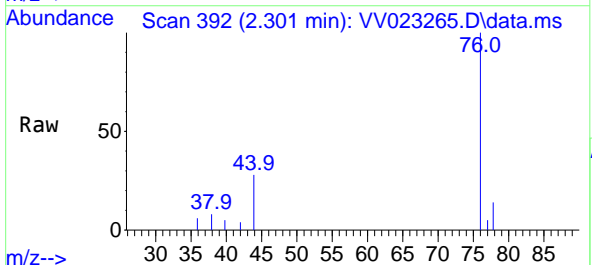


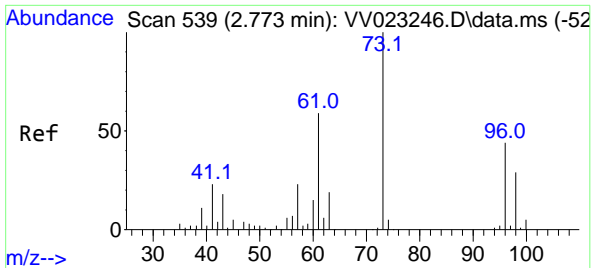
Tgt Ion: 43 Resp: 2863
 Ion Ratio Lower Upper
 43 100
 58 26.0 0.0 55.4



#14
 Carbon disulfide
 Concen: 0.122 ug/L
 RT: 2.301 min Scan# 392
 Delta R.T. 0.006 min
 Lab File: VV023265.D
 Acq: 06 Nov 2021 04:27

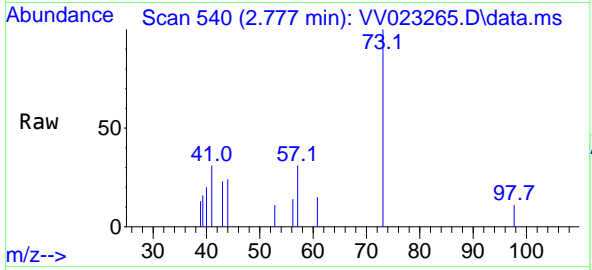
Tgt Ion: 76 Resp: 3711
 Ion Ratio Lower Upper
 76 100
 78 13.9 7.2 10.8#





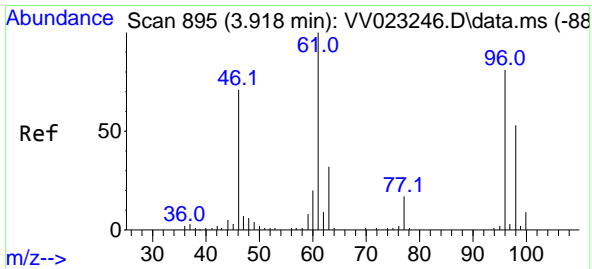
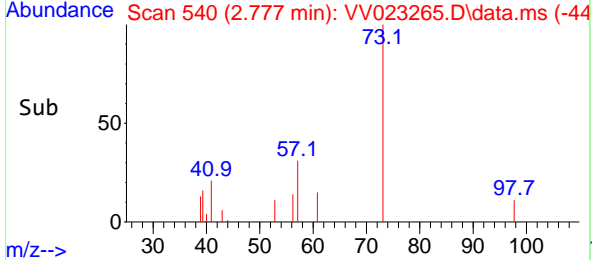
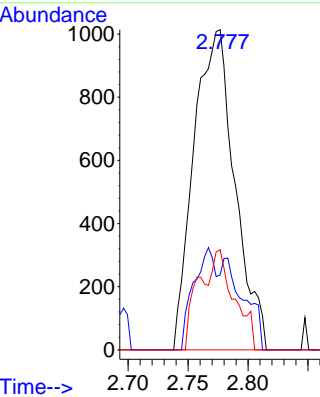
#17
 Methyl tert-butyl Ether
 Concen: 0.136 ug/L
 RT: 2.777 min Scan# 54
 Delta R.T. 0.003 min
 Lab File: VV023265.D
 Acq: 06 Nov 2021 04:27

Instrument : MSVOA_V
 ClientSampleId : H4605

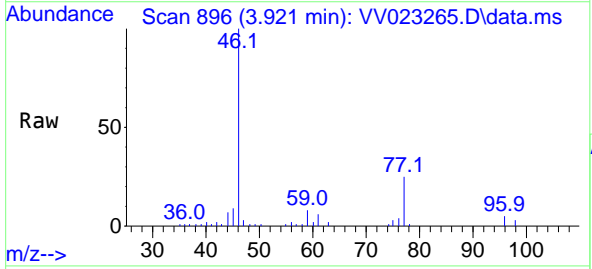


Tgt Ion: 73 Resp: 2408

Ion	Ratio	Lower	Upper
73	100		
43	15.3	17.4	26.0#
57	17.0	16.5	24.7

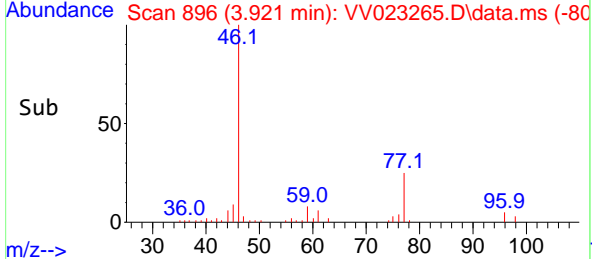
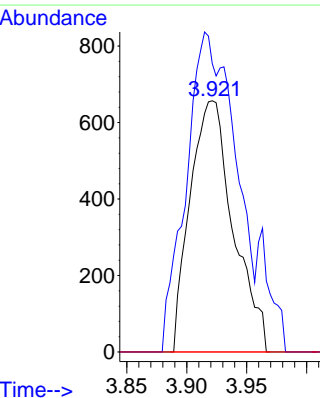


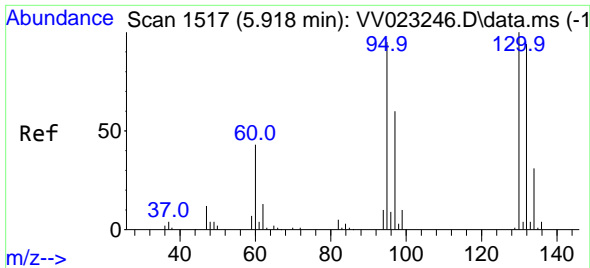
#22
 cis-1,2-Dichloroethene
 Concen: 0.173 ug/L
 RT: 3.921 min Scan# 896
 Delta R.T. 0.003 min
 Lab File: VV023265.D
 Acq: 06 Nov 2021 04:27



Tgt Ion: 96 Resp: 1646

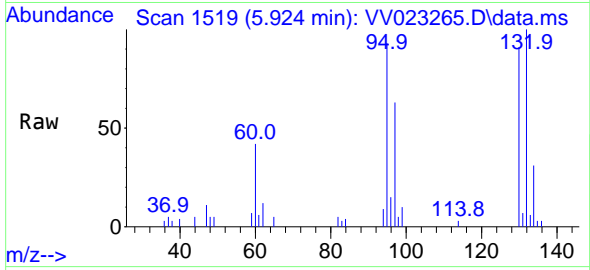
Ion	Ratio	Lower	Upper
96	100		
61	114.8	92.3	171.3
68	0.0	0.4	0.8#





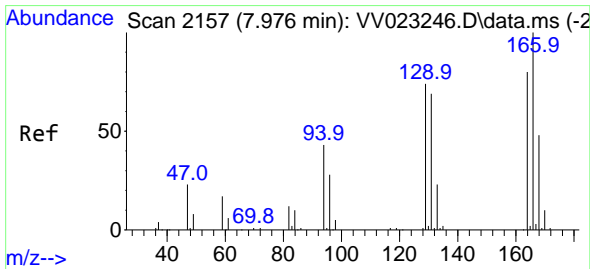
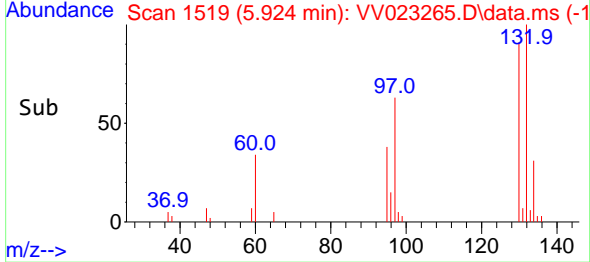
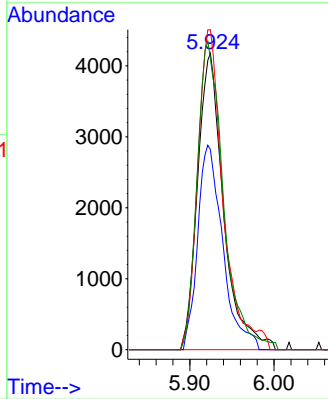
#34
 Trichloroethene
 Concen: 0.879 ug/L
 RT: 5.924 min Scan# 11
 Delta R.T. 0.006 min
 Lab File: VV023265.D
 Acq: 06 Nov 2021 04:27

Instrument : MSVOA_V
 ClientSampleId : H4605



Tgt Ion: 95 Resp: 8950

Ion	Ratio	Lower	Upper
95	100		
97	67.5	45.0	83.6
132	107.9	69.7	129.4
130	98.2	73.7	136.9



#47
 Tetrachloroethene
 Concen: 5.210 ug/L
 RT: 7.976 min Scan# 2157
 Delta R.T. -0.000 min
 Lab File: VV023265.D
 Acq: 06 Nov 2021 04:27

Tgt Ion: 164 Resp: 45971

Ion	Ratio	Lower	Upper
164	100		
129	92.4	64.0	119.0
131	90.1	63.4	117.8
166	129.0	89.3	165.9

