

Data Path : Z:\voasrv\HPCHEM1\MSVOA_V\Data\VV110521\
 Data File : VV023241.D
 Acq On : 05 Nov 2021 18:44
 Operator : SY/MD
 Sample : M4535-07
 Misc : 25.0mL/MSVOA_V/WATER
 ALS Vial : 24 Sample Multiplier: 1

Instrument :
 MSVOA_V
 ClientSampleId :
 H4623

Integration Parameters: rteint.p
 Integrator: RTE
 Smoothing : ON Filtering: 5
 Sampling : 1 Min Area: 3 % of largest Peak
 Start Thrs: 0.1 Max Peaks: 100
 Stop Thrs : 0 Peak Location: TOP

If leading or trailing edge < 100 prefer < Baseline drop else tangent >
 Peak separation: 5

Method : Z:\voasrv\HPCHEM1\MSVOA_V\Method\SFAMVTR110421WMA.M
 Title : TRACE VOA SFAM1.0

Signal : TIC: VV023241.D\data.ms

peak #	R.T. min	first scan	max scan	last scan	PK TY	peak height	corr. area	corr. % max.	% of total
1	1.134	23	29	43	rVB	79415	80890	17.04%	1.945%
2	1.304	76	82	98	rVB	68657	72265	15.22%	1.738%
3	1.568	156	164	173	rBV	59652	64811	13.65%	1.558%
4	2.108	322	332	348	rBV	112360	159967	33.70%	3.847%
5	3.912	880	893	928	rBV2	33343	145332	30.61%	3.495%
6	4.352	1013	1030	1055	rBV	84193	213164	44.90%	5.126%
7	5.050	1228	1247	1274	rBV3	189338	474716	100.00%	11.415%
8	5.619	1411	1424	1455	rBV	147453	304272	64.10%	7.317%
9	5.924	1506	1519	1531	rBV	5200	12452	2.62%	0.299%
10	6.072	1549	1565	1583	rBV	109265	223437	47.07%	5.373%
11	6.989	1839	1850	1868	rBV	45923	87656	18.46%	2.108%
12	7.317	1941	1952	1972	rBV	221799	390206	82.20%	9.383%
13	7.403	1972	1979	1995	rVB6	4039	8597	1.81%	0.207%
14	7.629	2036	2049	2068	rBV	27926	52660	11.09%	1.266%
15	7.976	2145	2157	2183	rVB	182028	302113	63.64%	7.265%
16	8.092	2183	2193	2226	rBV	196474	392720	82.73%	9.444%
17	8.854	2414	2430	2448	rBV	229715	376214	79.25%	9.047%
18	10.217	2843	2854	2866	rBV	76060	118281	24.92%	2.844%
19	11.249	3163	3175	3191	rBV	221045	344135	72.49%	8.275%
20	11.625	3280	3292	3314	rBV	208303	334722	70.51%	8.049%

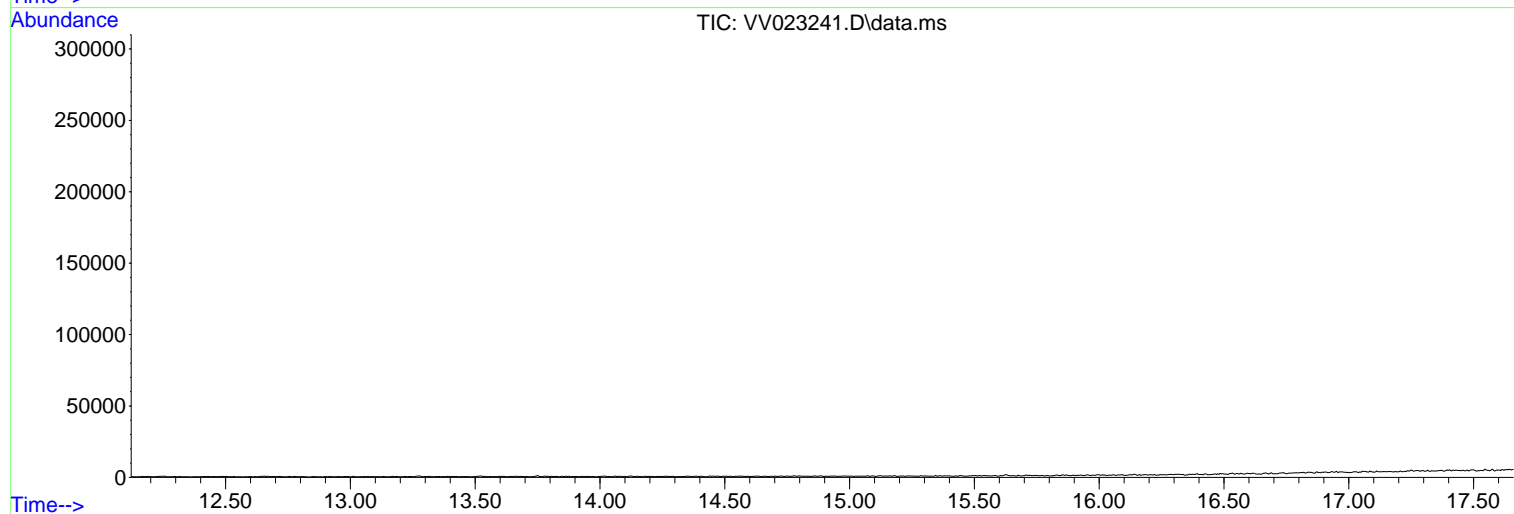
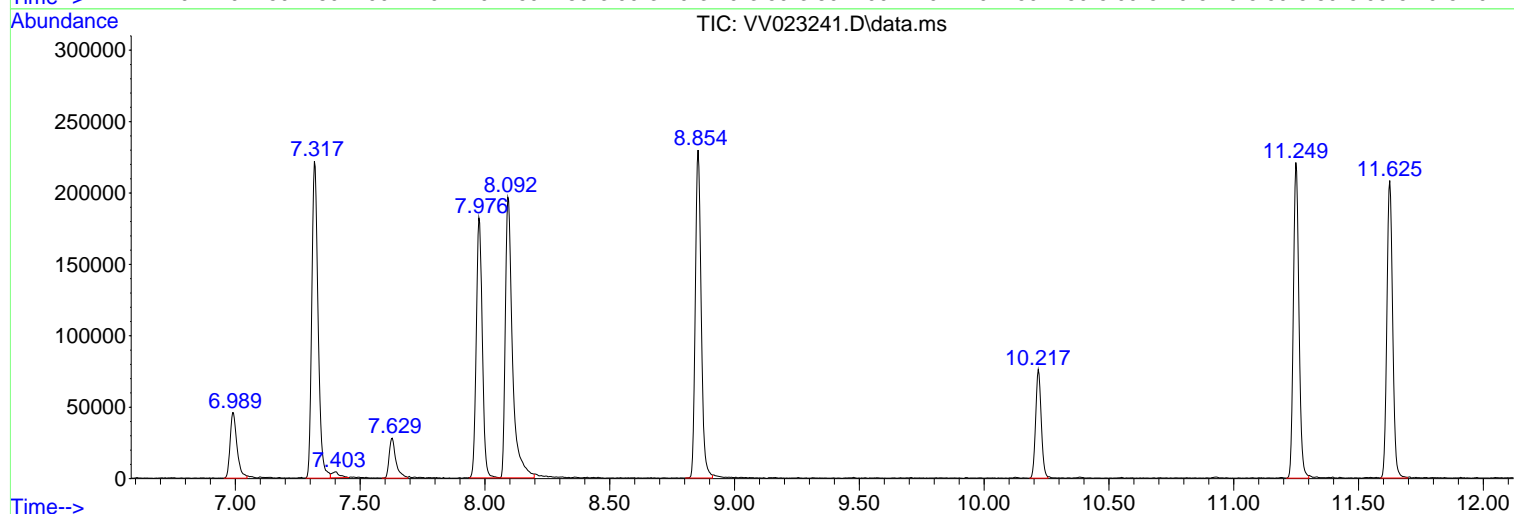
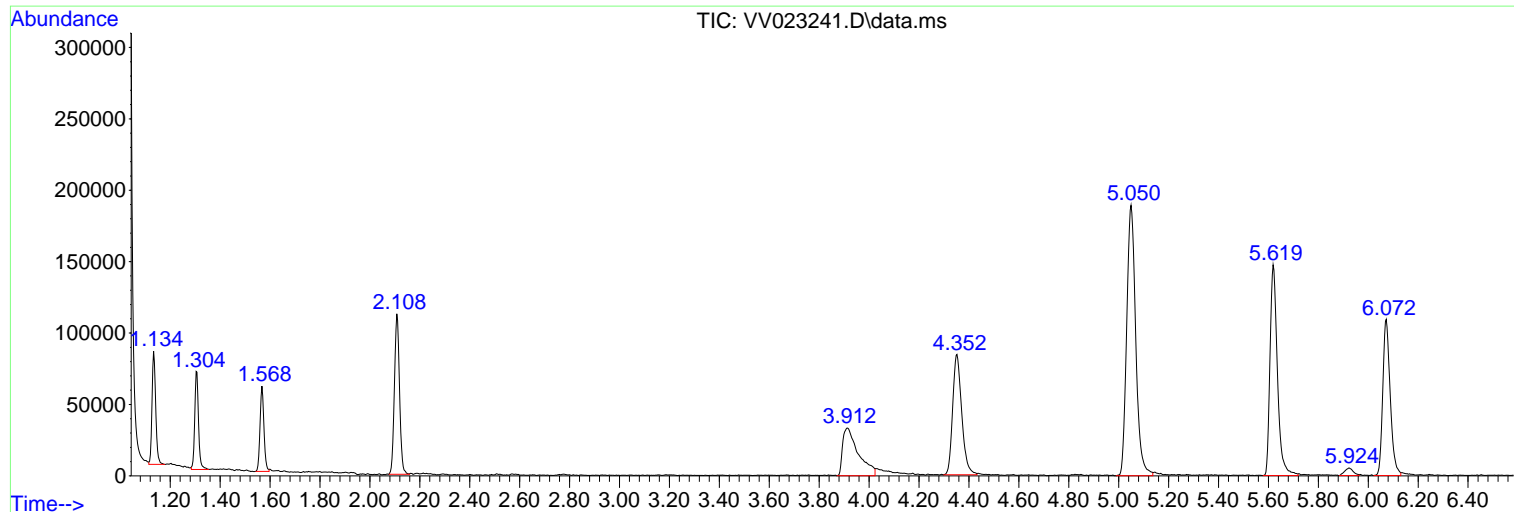
Sum of corrected areas: 4158610

Data Path : Z:\voasrv\HPCHEM1\MSVOA_V\Data\VV110521\
Data File : VV023241.D
Acq On : 05 Nov 2021 18:44
Operator : SY/MD
Sample : M4535-07
Misc : 25.0mL/MSVOA_V/WATER
ALS Vial : 24 Sample Multiplier: 1

Instrument :
MSVOA_V
ClientSampleId :
H4623

Quant Method : Z:\voasrv\HPCHEM1\MSVOA_V\Method\SFAMVTR110421WMA.M
Quant Title : TRACE VOA SFAM1.0

TIC Library : C:\Database\NIST20.L
TIC Integration Parameters: LSCINT.P



Library Search Compound Report

Data Path : Z:\voasrv\HPCHEM1\MSVOA_V\Data\VV110521\
Data File : VV023241.D
Acq On : 05 Nov 2021 18:44
Operator : SY/MD
Sample : M4535-07
Misc : 25.0mL/MSVOA_V/WATER
ALS Vial : 24 Sample Multiplier: 1

Instrument :
MSVOA_V
ClientSampleId :
H4623

Quant Method : Z:\voasrv\HPCHEM1\MSVOA_V\Method\SFAMVTR110421WMA.M
Quant Title : TRACE VOA SFAM1.0

TIC Library : C:\Database\NIST20.L
TIC Integration Parameters: LSCINT.P

No Library Search Compounds Detected

Data Path : Z:\voasrv\HPCHEM1\MSVOA_V\Data\VV110521\
Data File : VV023241.D
Acq On : 05 Nov 2021 18:44
Operator : SY/MD
Sample : M4535-07
Misc : 25.0mL/MSVOA_V/WATER
ALS Vial : 24 Sample Multiplier: 1

Instrument :
MSVOA_V
ClientSampleId :
H4623

Quant Method : Z:\voasrv\HPCHEM1\MSVOA_V\Method\SFAMVTR110421WMA.M
Quant Title : TRACE VOA SFAM1.0

TIC Library : C:\Database\NIST0.L
TIC Integration Parameters: LSCINT.P

TIC Top Hit name	RT	EstConc	Units	Response	--Internal Standard--		
					#	RT	Resp Conc
